



THE CITY OF DAYTONA BEACH
OFFICE OF THE PURCHASING AGENT

Post Office Box 2451
Daytona Beach, Florida 32115-2451

Phone (386) 671-8080
Fax (386) 671-8085

ADDENDUM NO. 2

DATE: November 8, 2019

PROJECT: ITB 20093
PENINSULA CLUB WINDOW REPLACEMENT

OPENING DATE: November 19, 2019 at 2:00 PM

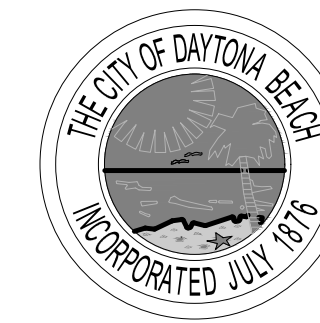
This addendum is hereby incorporated into the Bid Documents for the project referenced above. The following items are clarifications, corrections, additions, deletions and/or revisions to and shall take precedence over the original documents. Additions are indicated by underlining, deletions are indicated by ~~strikethrough~~.

1. Sheet A2.1 Floor Plan & Window Schedule has been revised and is located online at <https://vrapp.vendorregistry.com/Bids/View/Bid/a01ed352-9072-4622-bf83-57810ce08920>
2. All other terms and conditions remain the same.

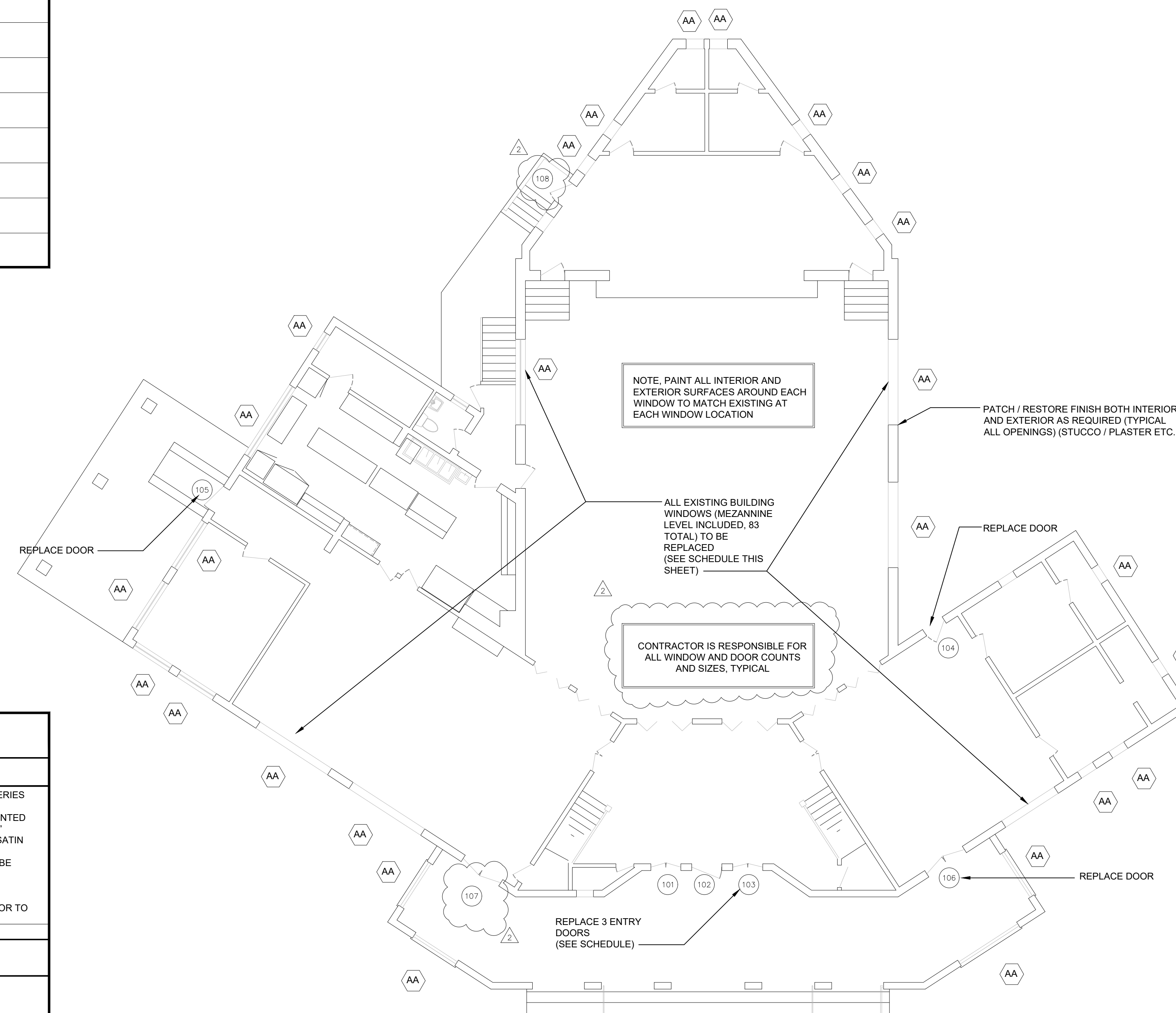
The Bidder shall acknowledge receipt of this addendum in Section 7 of the Bid Proposal Form.

The City of Daytona Beach

Kirk Zimmerman, CPPB
Buyer



MARK						WHEN APPLICABLE	
							DIVIDED LIGHTS TO MATCH EXISTING, SATIN NICKEL NEWBURY DOOR HARDWARE 5 DOOR UNITS. SEE PLAN FOR LOCATIONS
							ALL ROUGH OPENINGS AND CONFIGURATIONS TO BE VERIFIED PRIOR TO WINDOW ORDERING BY CONTRACTOR
101	ALUM. CLAD	(PR) 3'-0"	6'-8"	ALUM. CLAD	WHITE	TBD	SEE GENERAL REMARKS ABOVE
102	ALUM. CLAD	3'-4 1/2"	7'-0"	ALUM. CLAD	WHITE	TBD	SEE GENERAL REMARKS ABOVE
103	ALUM. CLAD	(PR) 3'-0"	6'-8"	ALUM. CLAD	WHITE	TBD	SEE GENERAL REMARKS ABOVE
104	ALUM. CLAD	3'-0"	6'-8"	ALUM. CLAD	WHITE	TBD	SEE GENERAL REMARKS ABOVE
105	ALUM. CLAD	3'-0"	6'-8"	ALUM. CLAD	WHITE	TBD	SEE GENERAL REMARKS ABOVE
106	ALUM. CLAD	(PR) 2'-6"	7'-0"	ALUM. CLAD	WHITE	TBD	SEE GENERAL REMARKS ABOVE
107	ALUM. CLAD	(PR) 2'-6"	7'-0"	ALUM. CLAD	WHITE	TBD	SEE GENERAL REMARKS ABOVE
108	ALUM. CLAD	3'-0"	6'-8"	ALUM. CLAD	WHITE	TBD	SEE GENERAL REMARKS ABOVE



ISSUE	DATE
BID SET	9.27.19
1 ADDENDUM 1	11.5.19
2 ADDENDUM 2	11.8.19

**PENINSULA CLUB
WINDOWS AND
DOORS
REPLACEMENT**

**415 SOUTH
PENINSULA DRIVE
DAYTONA BEACH FL
32118**

WINDOW SCHEDULE						
MARK	FRAME SIZE (U.O.N.)			TYPE	MANUFACTURER	REMARKS
	WIDTH	HEIGHT	MAT'L			
						ANDERSEN E SERIES STORMWATCH SERIES (OR EQUAL), IMPACT RATED, WHITE ALUMINUM CLAD EXTERIOR, WHITE PAINTED PINE INTERIOR, SMART SUN LOW E, 7/8" DIVIDED LIGHTS TO MATCH EXISTING, SATIN NICKEL NEWBURY HARDWARE OR EQUAL, ALL WINDOWS IN BUILDING TO BE REPLACED
AA	VARIES	VARIES	ALUMINUM CLAD	WHITE	WHITE	DOUBLE HUNG ANDERSEN E SERIES OR EQUAL ALL ROUGH OPENINGS AND CONFIGURATIONS TO BE VERIFIED PRIOR TO WINDOW ORDERING BY CONTRACTOR

DOOR / WINDOW SCHEDULE NOTES

- EXTERIOR DOOR AND WINDOW THICKNESS PER PRODUCT APPROVAL
- COORDINATE DIMENSIONS SHOWN ABOVE WITH MANUFACTURERS DIMENSION REQUIREMENTS.
- FACTORY PRIME +PAINT ALL DOORS AND DOOR FRAMES
- GENERAL CONTRACTOR AND WINDOW / DOOR SUPPLIER TO VERIFY ALL QUANTITIES AND PROVIDE SHOP DRAWINGS PRIOR TO ORDERING / FABRICATION
- MANUFACTURER TO PROVIDE DESIGN PRESSURES THAT WILL BE VERIFIED BY ARCHITECT

SCALE:	AS NOTED
DRAWN:	BCC
CHECKED:	BCC
PROJECT NO:	2019-007

A2.1