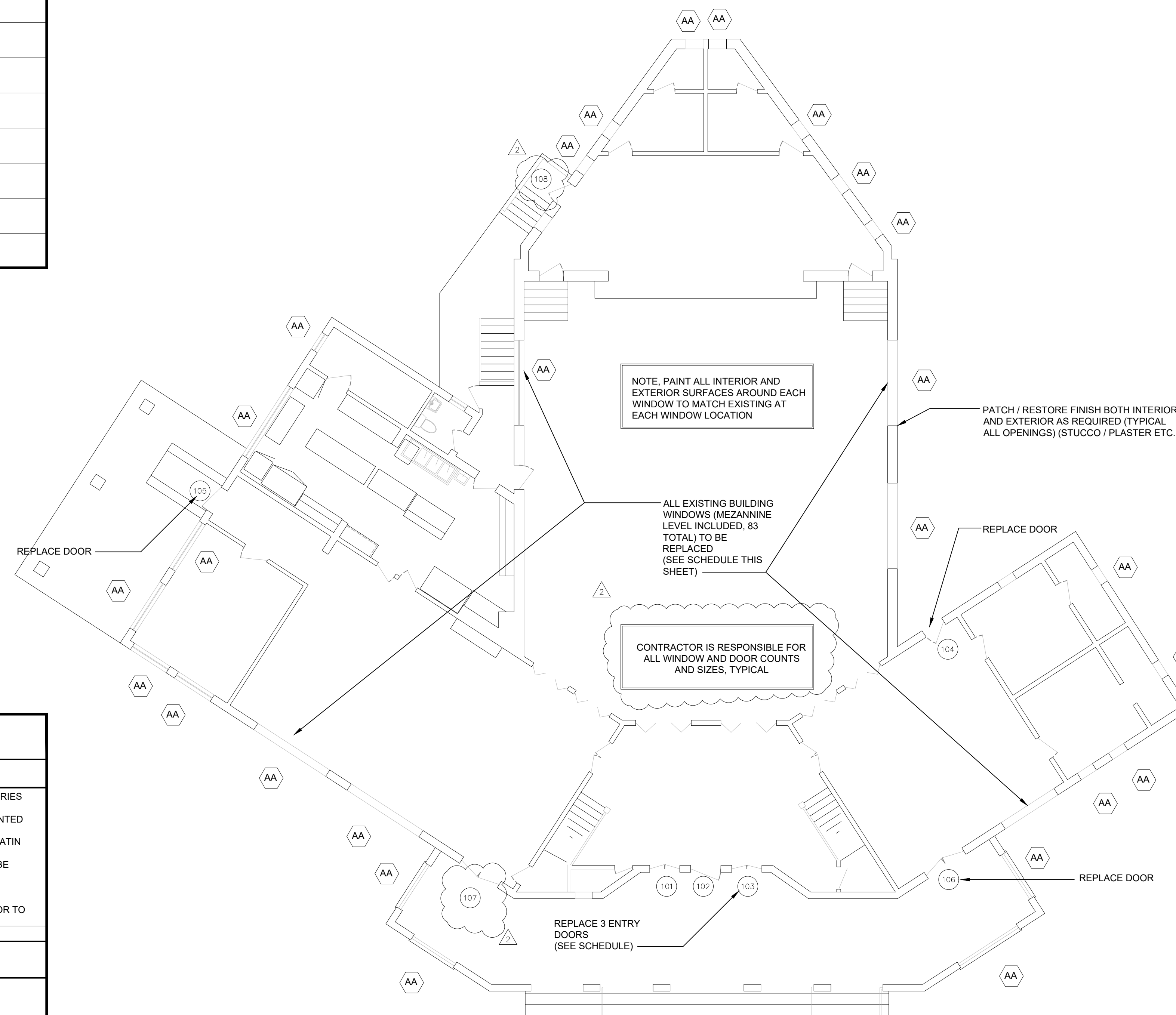


MARK	TYPE	PR	W	H	TYPE	COLOR	WHEN APPLICABLE	REMARKS
101	ALUM. CLAD	(PR)	3'-0"	6'-8"	ALUM. CLAD	WHITE	TBD	SEE GENERAL REMARKS ABOVE
102	ALUM. CLAD		3'-4 1/2"	7'-0"	ALUM. CLAD	WHITE	TBD	SEE GENERAL REMARKS ABOVE
103	ALUM. CLAD	(PR)	3'-0"	6'-8"	ALUM. CLAD	WHITE	TBD	SEE GENERAL REMARKS ABOVE
104	ALUM. CLAD		3'-0"	6'-8"	ALUM. CLAD	WHITE	TBD	SEE GENERAL REMARKS ABOVE
105	ALUM. CLAD		3'-0"	6'-8"	ALUM. CLAD	WHITE	TBD	SEE GENERAL REMARKS ABOVE
106	ALUM. CLAD	(PR)	2'-6"	7'-0"	ALUM. CLAD	WHITE	TBD	SEE GENERAL REMARKS ABOVE
107	ALUM. CLAD	(PR)	2'-6"	7'-0"	ALUM. CLAD	WHITE	TBD	SEE GENERAL REMARKS ABOVE
108	ALUM. CLAD		3'-0"	6'-8"	ALUM. CLAD	WHITE	TBD	SEE GENERAL REMARKS ABOVE



ISSUE	DATE
BID SET	9.27.19
1 ADDENDUM 1	11.5.19
2 ADDENDUM 2	11.8.19

**PENINSULA CLUB
WINDOWS AND
DOORS
REPLACEMENT**

**415 SOUTH
PENINSULA DRIVE
DAYTONA BEACH FL
32118**

WINDOW SCHEDULE							
MARK	FRAME SIZE (U.O.N.)			TYPE	MANUFACTURER	REMARKS	
	WIDTH	HEIGHT	MAT'L				
AA	VARIES	VARIES	ALUMINUM CLAD	WHITE	WHITE	DOUBLE HUNG	ANDERSEN E SERIES OR EQUAL
<p>ANDERSEN E SERIES STORMWATCH SERIES (OR EQUAL), IMPACT RATED, WHITE ALUMINUM CLAD EXTERIOR, WHITE PAINTED PINE INTERIOR, SMART SUN LOW E, 7/8" DIVIDED LIGHTS TO MATCH EXISTING, SATIN NICKEL NEWBURY HARDWARE OR EQUAL, ALL WINDOWS IN BUILDING TO BE REPLACED</p> <p>ALL ROUGH OPENINGS AND CONFIGURATIONS TO BE VERIFIED PRIOR TO WINDOW ORDERING BY CONTRACTOR</p>							
DOOR / WINDOW SCHEDULE NOTES							
<p>1. EXTERIOR DOOR AND WINDOW THICKNESS PER PRODUCT APPROVAL 2. COORDINATE DIMENSIONS SHOWN ABOVE WITH MANUFACTURERS DIMENSION REQUIREMENTS. 3. FACTORY PRIME +PAINT ALL DOORS AND DOOR FRAMES 4. GENERAL CONTRACTOR AND WINDOW / DOOR SUPPLIER TO VERIFY ALL QUANTITIES AND PROVIDE SHOP DRAWINGS PRIOR TO ORDERING / FABRICATION 5. MANUFACTURER TO PROVIDE DESIGN PRESSURES THAT WILL BE VERIFIED BY ARCHITECT</p>							

SCALE:	AS NOTED
DRAWN:	BCC
CHECKED:	BCC
PROJECT NO:	2019-007

A2.1