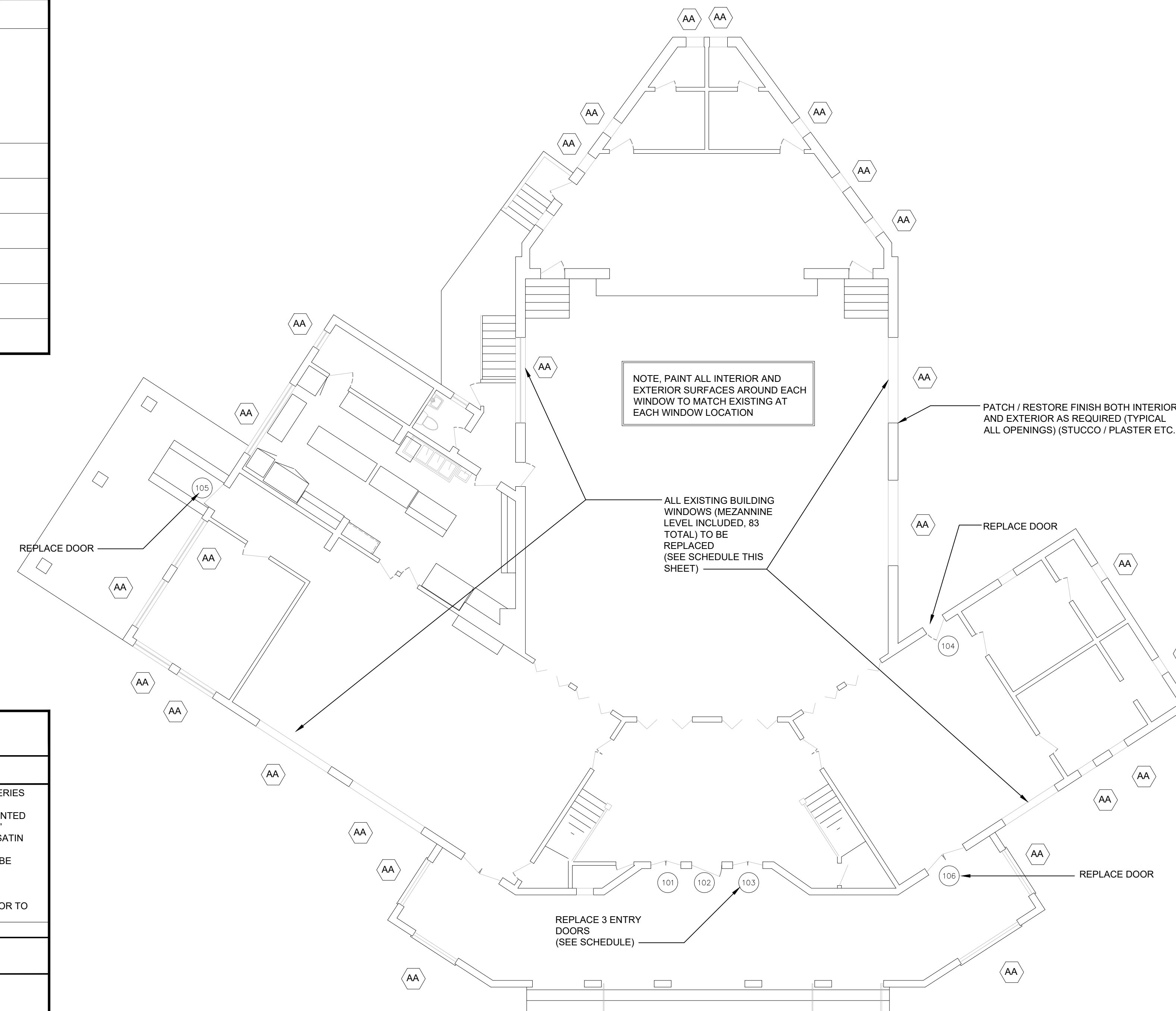


DOOR SCHEDULE							
MARK	TYPE	DOOR			FINISH	MANUF. NUMBER WHEN APPLICABLE	REMARKS
		UNIT WIDTH	HEIGHT V.I.F.	MAT'L			
101	ALUM. CLAD	(PR) 3'-0"	6'-8"	ALUM. CLAD	WHITE	TBD	SEE GENERAL REMARKS ABOVE
102	ALUM. CLAD	3'-4 1/2"	7'-0"	ALUM. CLAD	WHITE	TBD	SEE GENERAL REMARKS ABOVE
103	ALUM. CLAD	(PR) 3'-0"	6'-8"	ALUM. CLAD	WHITE	TBD	SEE GENERAL REMARKS ABOVE
104	ALUM. CLAD	3'-0"	6'-8"	ALUM. CLAD	WHITE	TBD	SEE GENERAL REMARKS ABOVE
105	ALUM. CLAD	3'-0"	6'-8"	ALUM. CLAD	WHITE	TBD	SEE GENERAL REMARKS ABOVE
106	ALUM. CLAD	(PR) 2'-6"	7'-0"	ALUM. CLAD	WHITE	TBD	SEE GENERAL REMARKS ABOVE

WINDOW SCHEDULE								
MARK	FRAME SIZE (U.O.N.)					TYPE	MANUFACTURER	REMARKS
	WIDTH	HEIGHT	MAT'L	INTERIOR FINISH	EXTERIOR FINISH			
AA	VARIES	VARIES	ALUMINUM CLAD	WHITE	WHITE	DOUBLE HUNG	ANDERSEN E SERIES OR EQUAL	ANDERSEN E SERIES STORMWATCH SERIES (OR EQUAL), IMPACT RATED, WHITE ALUMINUM CLAD EXTERIOR, WHITE PAINTED PINE INTERIOR, SMART SUN LOW E, 7/8" DIVIDED LIGHTS TO MATCH EXISTING, SATIN NICKEL NEWBURY HARDWARE OR EQUAL, ALL WINDOWS IN BUILDING TO BE REPLACED ALL ROUGH OPENINGS AND CONFIGURATIONS TO BE VERIFIED PRIOR TO WINDOW ORDERING BY CONTRACTOR

DOOR / WINDOW SCHEDULE NOTES	
1.	EXTERIOR DOOR AND WINDOW THICKNESS PER PRODUCT APPROVAL
2.	COORDINATE DIMENSIONS SHOWN ABOVE WITH MANUFACTURERS DIMENSION REQUIREMENTS.
3.	FACTORY PRIME +PAINT ALL DOORS AND DOOR FRAMES
4.	GENERAL CONTRACTOR AND WINDOW / DOOR SUPPLIER TO VERIFY ALL QUANTITIES AND PROVIDE SHOP DRAWINGS PRIOR TO ORDERING / FABRICATION
5.	MANUFACTURER TO PROVIDE DESIGN PRESSURES THAT WILL BE VERIFIED BY ARCHITECT



ISSUE	DATE
BID SET	9.27.19
ADDENDUM 1	11.5.19

PENINSULA CLUB WINDOWS AND DOORS REPLACEMENT

415 SOUTH
PENINSULA DRIVE
DAYTONA BEACH FL
32118

SCALE:	AS NOTED
DRAWN:	BCC
CHECKED:	BCC
PROJECT NO:	2019-007

A2.1