

Bid #1281- ADDENDUM #1

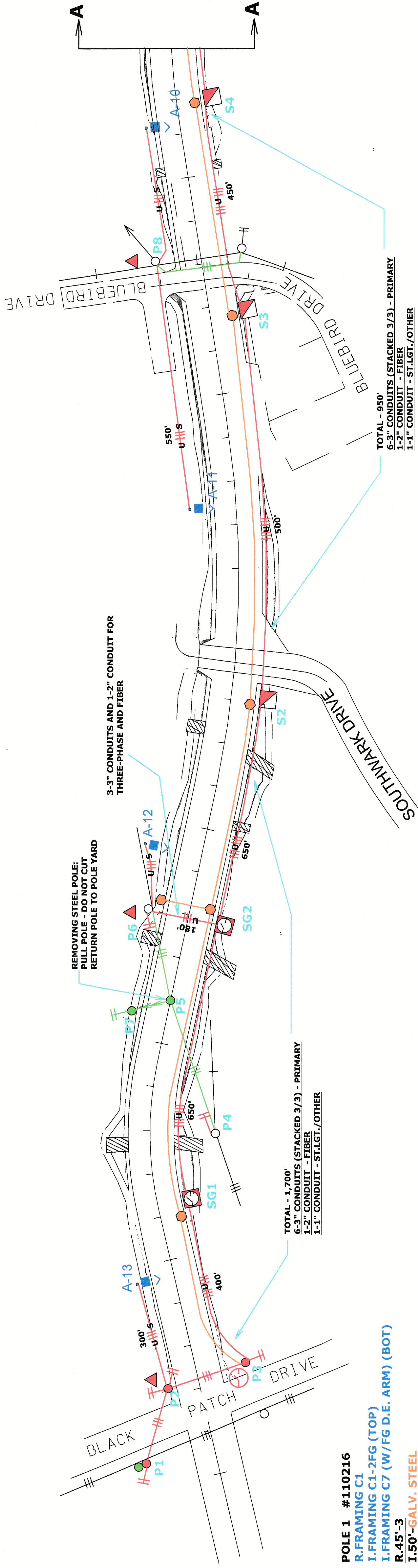
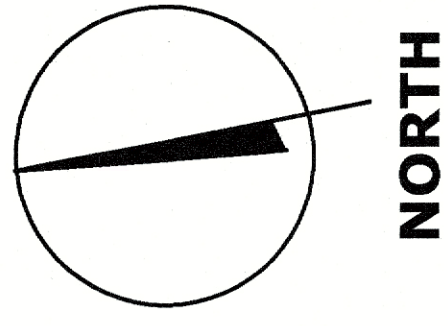
The following question was asked related to the Springfield Electric Distribution Construction and Maintenance Services Bid #1281 (RFP)

1. For “initial Work” listed in the Bid #1281, listed on page 2, Section 1, paragraph 2:

Is it possible to receive drawings and specifications for this “initial Work”?

SPRINGFIELD ELECTRIC DEPARTMENT
BATSON PARKWAY FROM BLACK PATCH DRIVE TO HIGHWAY 41
INSTALL PRIMARY AND SECONDARY FACILITIES FOR FUTURE DEVELOPMENTS

WORK ORDER #24234



- POLE 1 #110216**
 R.FRAMING C1
 I.FRAMING C1-2FG (TOP)
 I.FRAMING C7 (W/FG D.E. ARM) (BOT)
 R.45'-3
 I.50'-GALV. STEEL
 I.ANCHOR
 I.DOWN GUYS (2)
 I.3-#795 A.A.C. - PRI. (130', 115')
 I.1-#336 A.C.S.R.-NEUT. (130', 115')

TOTAL - 1,700'
 6-3" CONDUITS (STACKED 3/3) - PRIMARY
 1-2" CONDUIT - FIBER
 1-1" CONDUIT - ST.LGT./OTHER

3-3" CONDUITS AND 1-2" CONDUIT FOR
 THREE-PHASE AND FIBER

REMOVING STEEL POLE:
 PULL POLE - DO NOT CUT
 RETURN POLE TO POLE YARD

TOTAL - 950'
 6-3" CONDUITS (STACKED 3/3) - PRIMARY
 1-2" CONDUIT - FIBER
 1-1" CONDUIT - ST.LGT./OTHER

- POLE 2**
 I.FRAMING C7 (W/FG D.E. ARM) (TOP)
 I.FRAMING C7 (W/FG D.E. ARM) (BOT)
 I.50'-GALV. STEEL
 I.ANCHORS (2)
 I.DOWN GUYS (4)
 I.10KVA TRANSFORMER
 FUTURE SECONDARY FOR ST.LGT. FEED.
- POLE 3**
 I.FRAMING C7 (W/FG D.E. ARM) (TOP)
 I.FRAMING AIR BREAK SWITCH (1200A)
 I.50'-GALV. STEEL
 I.ANCHOR
 I.DOWN GUYS (2)
 I.L.B.CUTOUTS (6)
 I.ARRESTORS (6)

- POLE 6**
 R.FRAMING C1
 I.FRAMING C7
 R.50'-4
 I.50'-GALV. STEEL
 I.ANCHOR
 I.DOWN GUYS (2)
 I.10KVA TRANSFORMER
 FUTURE SECONDARY FOR ST.LGT.FEED
- POLE 7**
 R.FRAMING GUYING
 R.40'-3
 R.ANCHOR
 R.DOWN GUYS (2)

- SECTIONALIZER CABINETS**
 S1, S2, S3, S4, S5, S6, S7, S8
- SECONDARY PEDESTALS**
 13 TOTAL
 STUB UP SECONDARY CONDUIT
 (1" RED) INTO
 EACH SECONDARY PEDESTAL

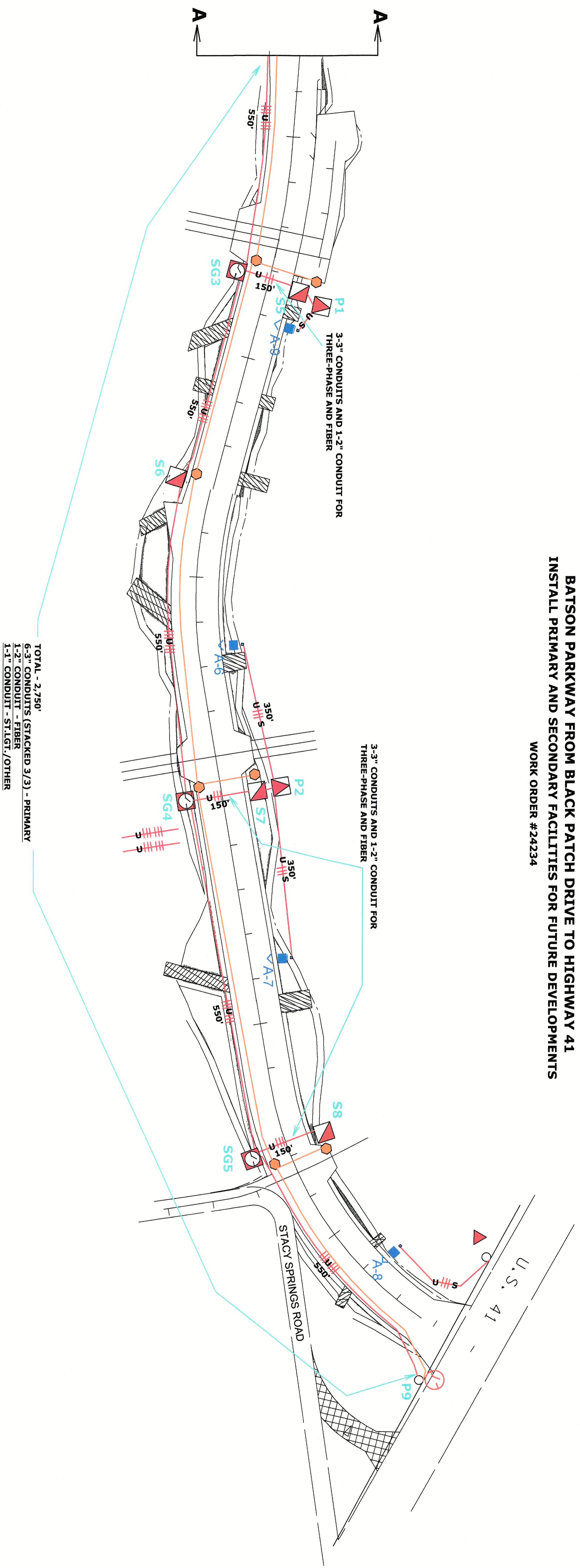
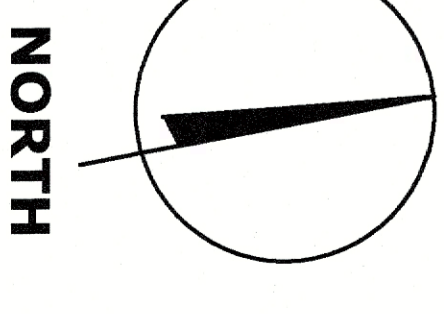
- FIBER PEDESTALS**
 13 TOTAL
 STUB UP FIBER CONDUIT
 (2" ORANGE) INTO
 EACH FIBER PEDESTAL
- SWITCH GEAR**
 SG1 - AS ADVISED
 SG2 - AS ADVISED
 SG3 - AS ADVISED
 SG4 - AS ADVISED

- POLE 4**
 R.FRAMING C1
 E.FRAMING A5
 I.FRAMING C7
 E.50'-3
 I.ANCHOR
 I.DOWN GUYS (2)
- POLE 5**
 R.FRAMING C2
 R.55'-GALV. STEEL
 R.SPAN GUYS (2)

LEGEND:

- EXISTING POLE
- NEW POLE
- ◊ NEW FIBER PEDESTAL
- ▲ NEW OVERHEAD TRANSFORMER
- ◻ NEW SINGLE-PHASE PAD MT. TRANSFORMER
- ◻ NEW THREE-PHASE SECTIONALIZER
- ◻ NEW SWITCH GEAR CABINET
- FUTURE STREET LIGHT POLE/FIXTURE
- NEW OVERHEAD PRIMARY, THREE-PHASE
- NEW UNDERGROUND PRIMARY, 3-CONDUITS
- NEW UNDERGROUND SECONDARY, 1-CONDUIT
- NEW UNDERGROUND PRIMARY, 6-CONDUITS
- REMOVE OVERHEAD PRIMARY, THREE-PHASE
- REMOVE POLE

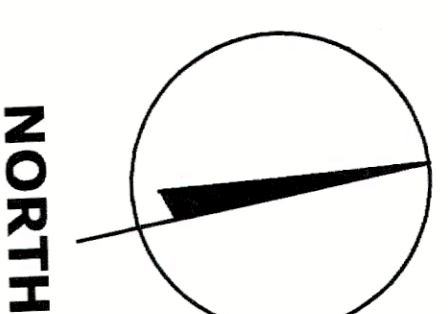
SPRINGFIELD ELECTRIC DEPARTMENT
BATSON PARKWAY FROM BLACK PATCH DRIVE TO HIGHWAY 41
INSTALL PRIMARY AND SECONDARY FACILITIES FOR FUTURE DEVELOPMENTS
 WORK ORDER #24234



LEGEND:

- EXISTING POLE
- NEW POLE
- ◻ NEW FIBER PEDESTAL
- ◻ NEW OVERHEAD TRANSFORMER
- ◻ NEW SINGLE-PHASE PAD MT. TRANSFORMER
- ◻ NEW THREE-PHASE SECTIONALIZER
- ⊠ NEW SWITCH GEAR CABINET
- ⏏ FUTURE STREET LIGHT POLE/FIXTURE
- NEW OVERHEAD PRIMARY, THREE-PHASE
- NEW UNDERGROUND PRIMARY, 3-CONDUITS
- NEW UNDERGROUND SECONDARY, 1-CONDUIT
- NEW UNDERGROUND PRIMARY, 6-CONDUITS
- REMOVE OVERHEAD PRIMARY, THREE-PHASE
- REMOVE POLE

SPRINGFIELD ELECTRIC DEPARTMENT
BATSON PARKWAY FROM BLACK PATCH DRIVE TO HIGHWAY 41
TYPICALS FOR CONDUIT INSTALLATION
 WORK ORDER #24234



GENERAL CONSTRUCTION NOTES:

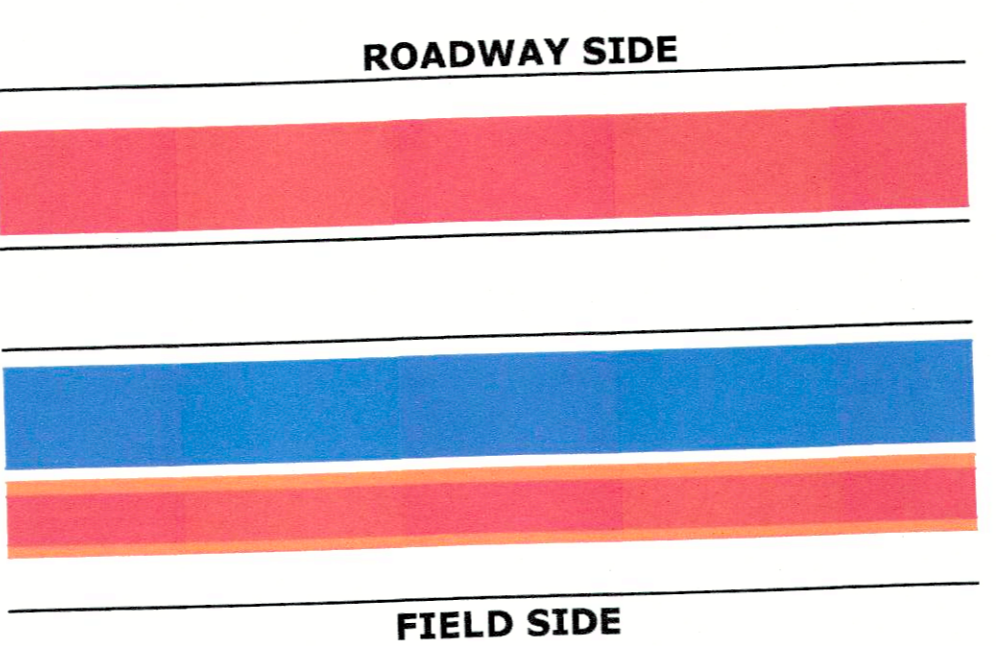
FROM POLE 3 TO S6S:
 ON THE SOUTH SIDE OF THE ROADWAY INSTALL
 6 - 3" SCH. 80 PVC CONDUITS
 1 - 2" SCH. 40 CONDUIT
 1 - 1" SCH. 40 CONDUIT
 IN THE SAME DITCH

THE 6 - 3" CONDUITS WILL BE STUBBED UP INTO
 PREFORMED SECTIONALIZER OR SWITCH GEAR BASES

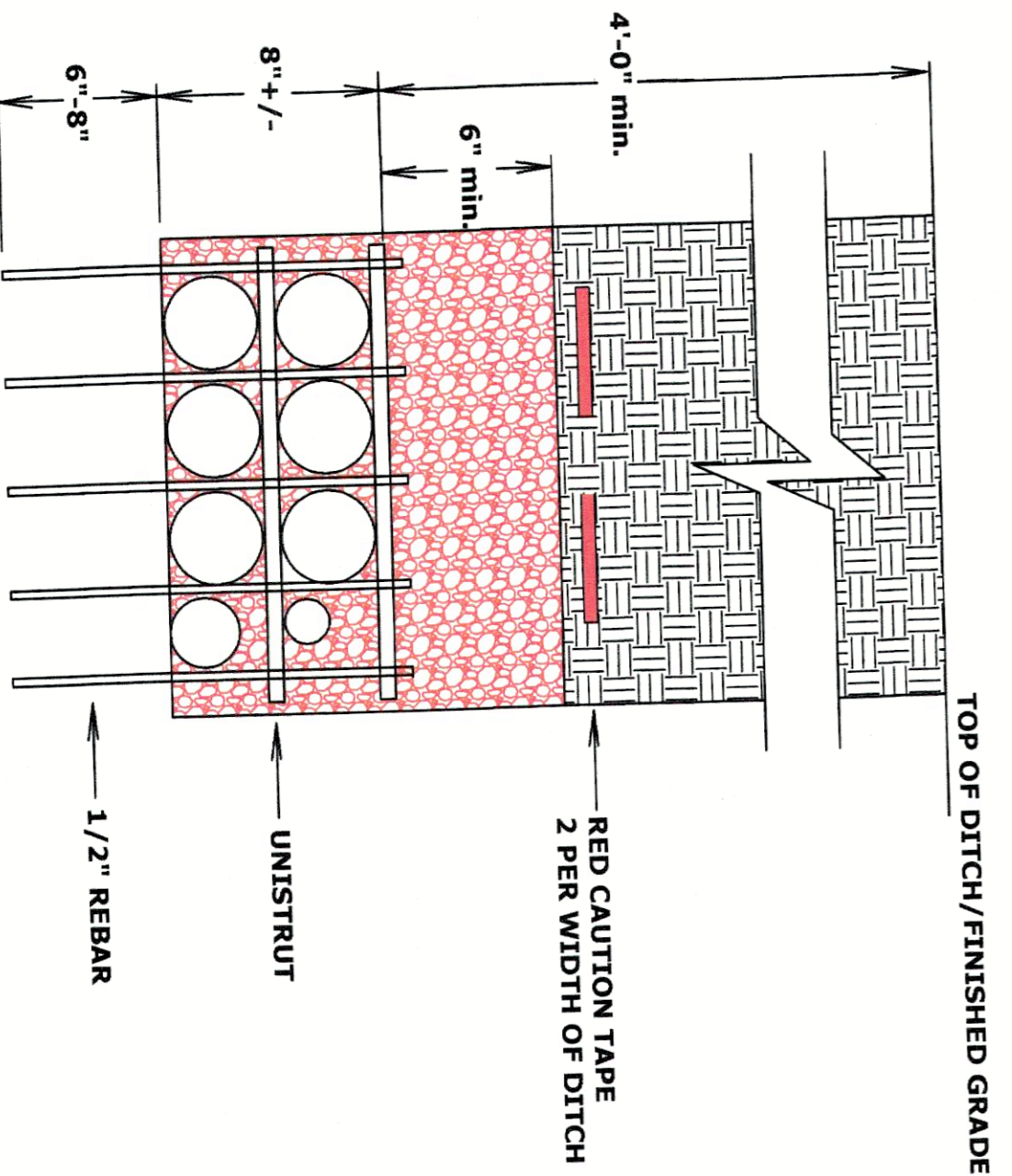
THE 2" CONDUIT (ORANGE) WILL BE STUBBED UP INTO
 THE SED FIBER PEDESTAL WHICH SHOULD BE LOCATED ON THE
 WEST SIDE OF THE SECTIONALIZER OR SWITCH GEAR LOCATIONS.
 (SEE DRAWING)

THE 1" CONDUIT (RED) WILL BE STUBBED UP INTO AN SED
 SECONDARY PEDESTAL LOCATED ADJACENT TO THE FIBER PEDESTAL.
 (SEE DRAWING) THIS PLAN VIEW DOES NOT SHOW SECONDARY PEDESTALS

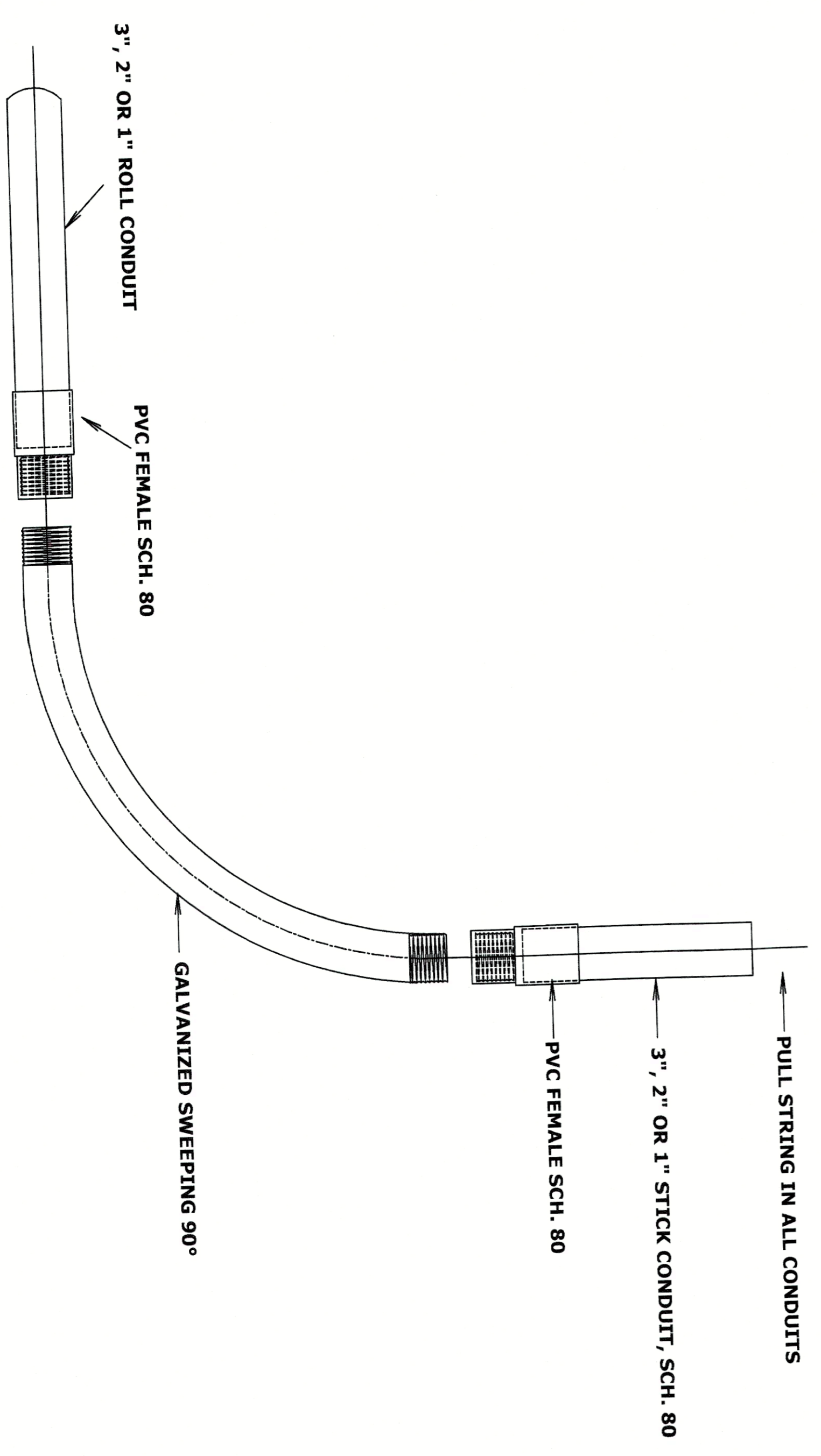
AT SWITCH GEARS 1, 2, 3 & 4:
 3 - 3" RIGID CONDUITS WILL STUB OUT TO THE NORTH SIDE
 OF THE ROADWAY INTO A SECTIONALIZER CABINET
 1 - 2" SCH. 80 CONDUIT (ORANGE) WILL STUB OUT TO THE NORTH
 SIDE OF THE ROADWAY INTO A FIBER PEDESTAL
 1 - 1" SCH. 80 CONDUIT (RED) WILL STUB OUT TO THE NORTH
 SIDE OF THE ROADWAY INTO A SECONDARY PEDESTAL



**CONDUIT CONFIGURATION
 IN THE DITCH**



**TYPICAL CONDUIT SPACER ARRANGEMENT
 USING UNI-STRUT AND REBAR
 PLACED APPROXIMATELY 25' APART IN DITCH**



**TYPICAL CONDUIT CONVERSION FROM PVC TO
 GALVANIZED ELBOWS, USING THREADED FEMALE ADAPTOR**