



ADDENDUM NO. 3

Issue Date: December 9, 2021

Project Name: Tax Collector Office Expansion

Bid Number: 2022018

Bid Opening Date: **December 16, 2021**

This addendum is being released to answer additional questions received. The information and documents contained in this addendum are hereby incorporated in the invitation to bid. This addendum must be acknowledged on the bid form, or the bid may be declared non-responsive.

Modifications to Bid Documents:

Replace Sheets A-3 and A-9 with the attached Sheets A-3 and A-9, Plan Revision dated 8DEC21.

Questions and Answers:

1. The plans are calling for 4 doors total but I'm counting 6. Please clarify the number of doors that need to be ordered for this job.

Sheets A-3 and A-9 have been revised to show the correct number of doors.

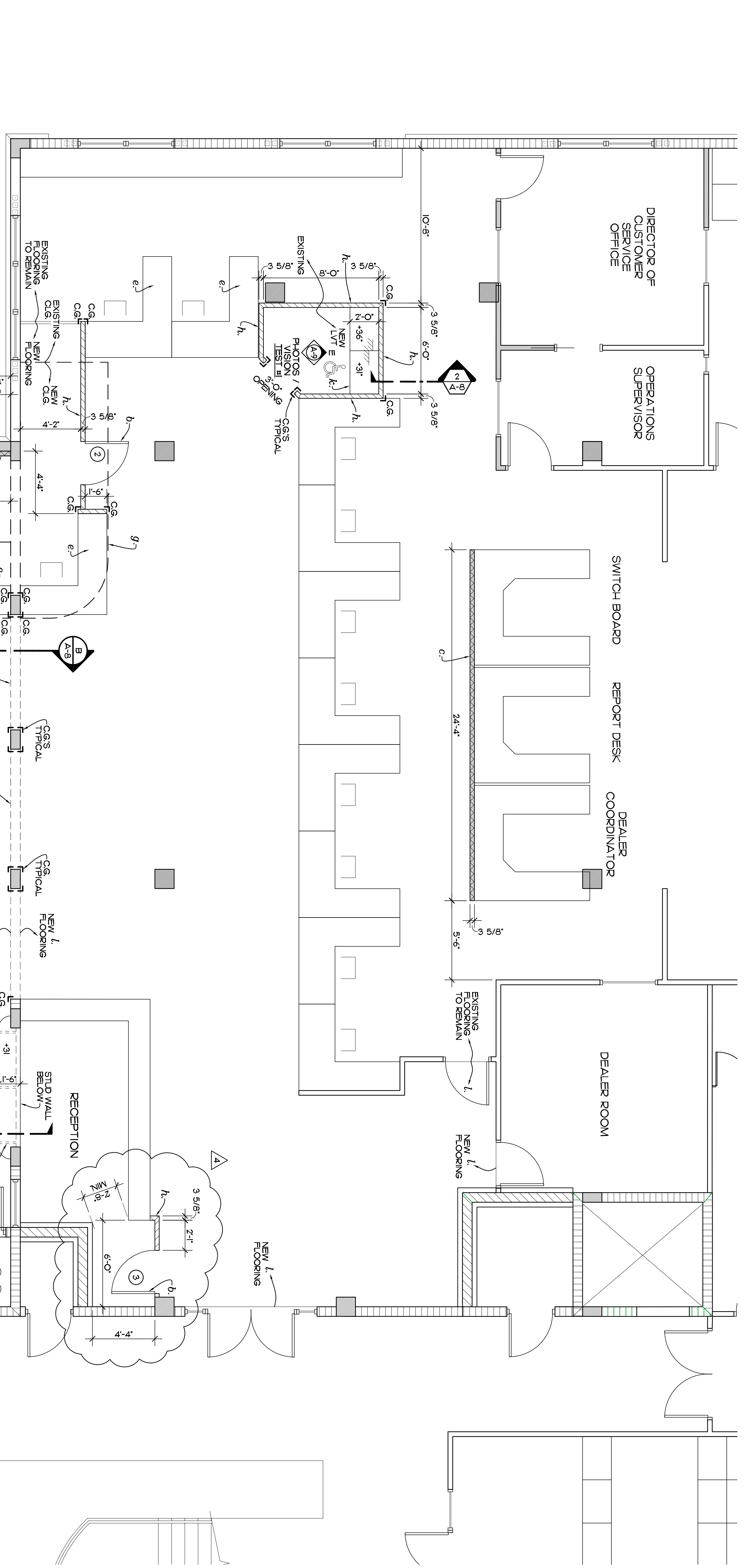
2. CGI Commercial informed me that they can't make windows A or B the way the plans as asking for. Can Kawneer be used as an alternate, or alternately, can we ask CGI Commercial to quote a top and bottom window and contractor mull (attach) them?

Kawneer IR 500 impact is an acceptable alternate manufacturer.

Vertical mullion is also acceptable between units. Must meet wind pressures required by code.

- NOTES**
- a. NEW STOREFRONT WINDOWS, WITH BLOCK WALL BELOW SEE DETAIL 1/A-7
 - b. NEW 4'-0" HIGH SWING DOOR
 - c. NEW FILL HGT. 3 5/8" 20 GA. STEEL STUDS AT 16" OC WITH 1/2" GYP. BD. FINISH
 - d. NEW STOREFRONT ALUMINUM DOOR, FURNITURE, BY OWNER
 - e. NEW AEM WORK STATION STATION
 - f. EXTEND EXISTING FIRE SPRINKLER LINE TO EXTERIOR WALL
 - g. NEW 8'-0" DEYWALL SOFFIT ABOVE, SEE SECTION C/A-8
 - h. NEW 48" HIGH WALL FINISHED PLASTIC LAMINATE OVER 1/2" PLYWOOD SEE DETAIL 2/A-8
 - i. NEW PLASTIC LAMINATE COUNTER, ADA ACCESSIBLE SEE DETAIL 1/A-8
 - k. NEW 24" WIDE PLASTIC LAMINATE COUNTER AT -36" AFF.
 - l. NEW LVT FLOORING

- LEGEND**
- NEW 48" HIGH 3-5/8" 20 GA. STEEL STUD WALL W/ PLASTIC LAMINATE FINISH AT 16" OC WITH 1/2" GYP. BD. FINISH
 - EXISTING CONCRETE COLUMNS
 - EXISTING CONCRETE BLOCK WALLS
 - WINDOW DESIGNATION SEE WINDOW SCHEDULE SHEET A-9
 - DOOR DESIGNATION SEE DOOR SCHEDULE SHEET A-9
 - INTERIOR ELEVATION SYMBOL, SEE SHEET A-9
 - EXPANSION JOINT
 - METAL THRESHOLD
 - ACOBYN 48" HIGH CORNER GUARD



FLOOR PLAN (PROPOSED)
 SCALE 1/4" = 1'-0"
 NOTE: FIELD VERIFY ALL DIMENSIONS

| NO. | DATE | REVISIONS | JNR |
|---------|------|--------------------------------|-----|
| 8DEC21 | | PLAN REVISION CORRECTION | JNR |
| 26AUG21 | | REVISED PER BLDG DEPT COMMENTS | JNR |

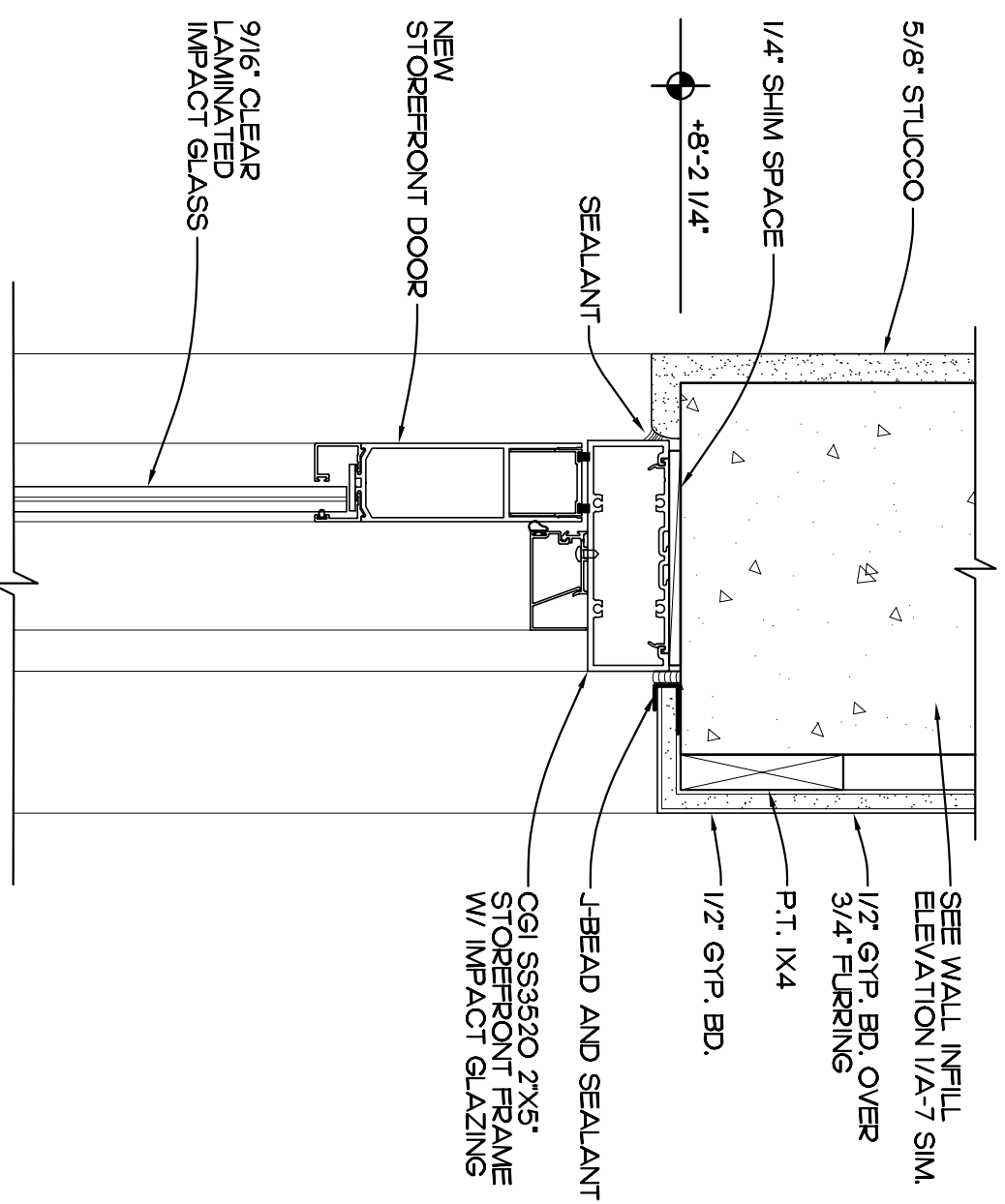
PROJECT: **TAX COLLECTOR OFFICE EXPANSION**
 FOR: INDIAN RIVER COUNTY, FLORIDA
 1800 27TH STREET - BUILDING B
 VERO BEACH FL 32960

SEAL:

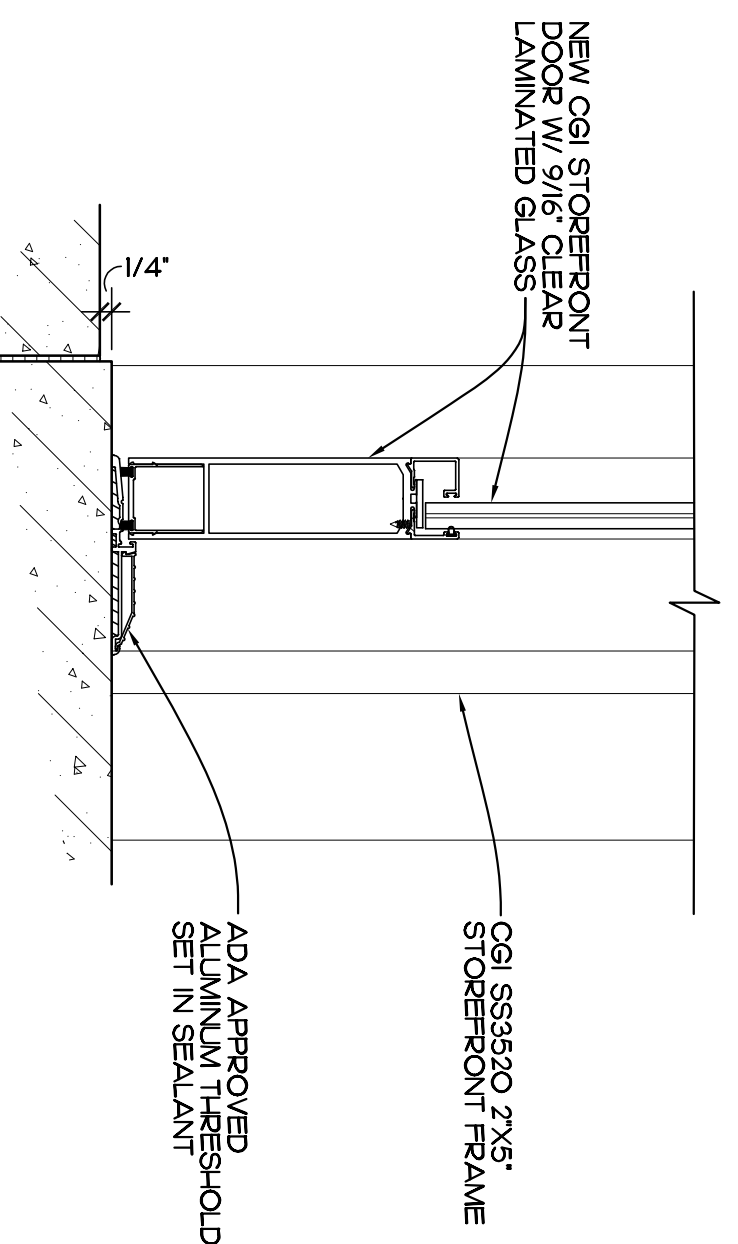


EDLUND · DRITENBAS · BINKLEY
 ARCHITECTS AND ASSOCIATES, P.A.
 AR-AA C000886
 65 ROYAL PALM POINTE, SUITE "D"
 VERO BEACH, FLORIDA 32960
 PHONE: (772) 569-4320

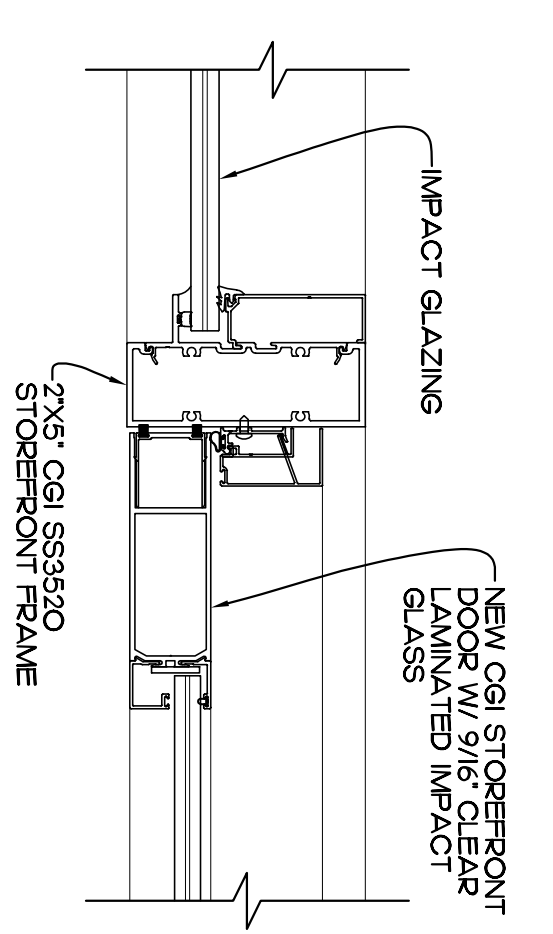
SHEET NO. **A-3**
 OF NINE



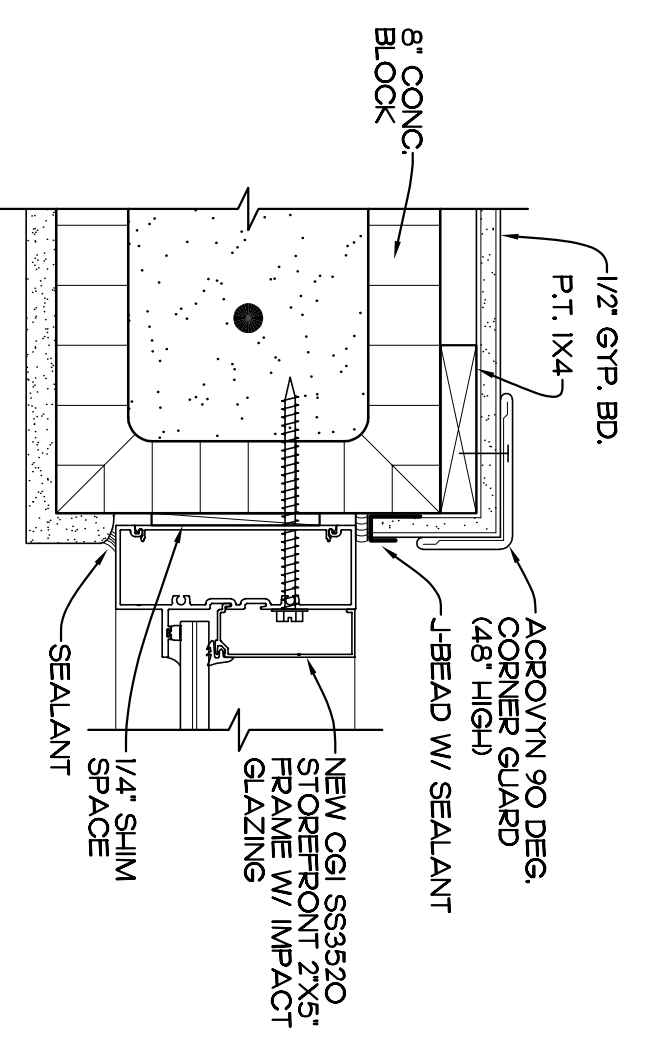
HEAD / JAMB (SIM)
SCALE: 3" = 1'-0" REF. DOOR SCHED. THIS SHEET



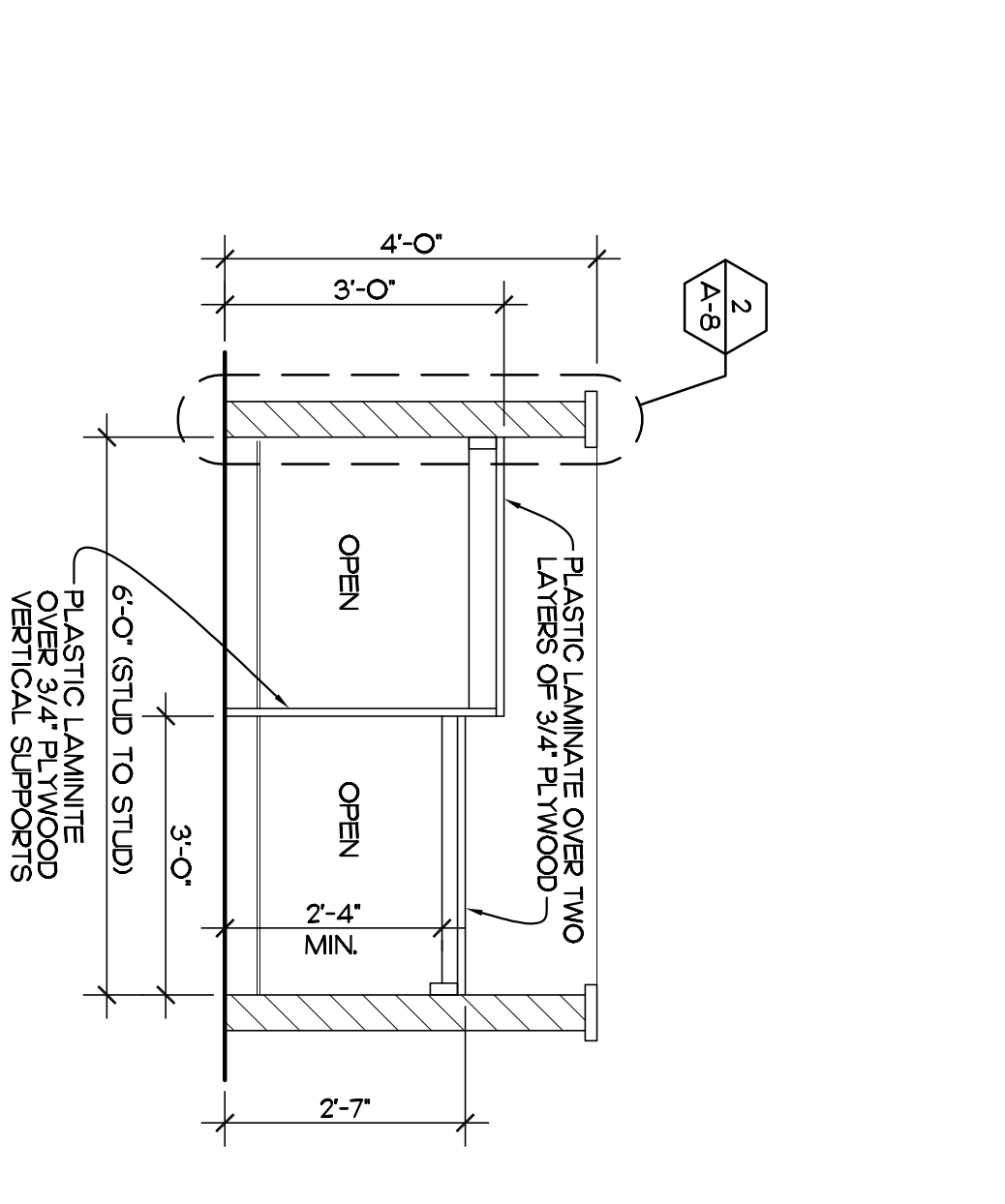
THRESHOLD
SCALE: 3" = 1'-0" REF. DOOR SCHED. THIS SHEET



JAMB
SCALE: 3" = 1'-0" REF. DOOR SCHED. THIS SHEET



JAMB / HEAD SILL
SCALE: 3" = 1'-0" REF. DOOR SCHED. THIS SHEET



VISION TEST BOOTHS #1 AND #2
SCALE: 1/2" = 1'-0"

INTERIOR ELEVATION

DOOR SCHEDULE MATCH EXISTING STOREROFF FINISH (DARK BRONZE)

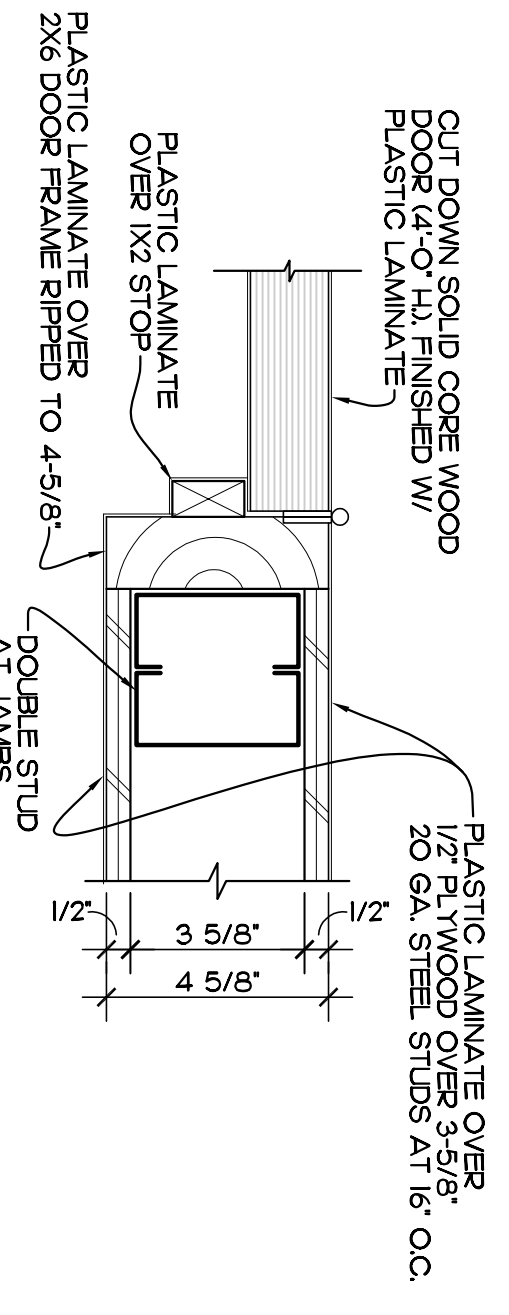
| MARK | SIZE | DESCRIPTION | JAMB | DETAIL | REMARKS |
|---------|-------------------------------|---|---------------------|---------------|--|
| 1 | 3'-0" W X 8'-0" H X 1-3/4" | CGI 2X5 SE-3550 STOREROFF DOOR W/ IMPACT GLASS | ALUMINUM | 1, 2, 3, 1A-9 | PROVIDE SOLABRONZE TINTED IMPACT GLASS |
| 2, 3, 4 | 3'-0" W X 4'-0" H X 1-3/4" | CUT DOWN SOLID CORE WOOD DOOR WITH PLASTIC LAMINATE | PLASTIC LAM OVER N3 | 5, 1A-9 | PROVIDE DOOR HARDWARE PASSAGE SET / HINGES |

NOTE: COORDINATE KETING WITH OWNER

WINDOW SCHEDULE MATCH EXISTING FINISH (DARK BRONZE)

| MARK | SIZE | MANUFACTURER | TYPE | DETAILS | SILL | REMARKS |
|------|-------------------|--|-----------------|---------|----------------------|---|
| A | 7'-9" W X 5'-0" H | CGI SS-3550 2X5 STOREROFF W/ TINTED IMPACT GLASS | FIXED STOREROFF | A1A-7 | 41A-9 SIMILAR MARBLE | PROVIDE LOW E MINIMUM U FACTOR 0.35, .25 SH-GC INSULATED TINTED GLASS |
| B | 5'-4" W X 5'-0" H | | | | | |
| C | 2'-0" W X 8'-0" H | | | | | |

NOTE: PROVIDE PUSH BUTTON PRIVACY LEVER HANDLE LOCKSET, MATCH EXISTING DOOR HARDWARE



JAMB DETAIL (AT GATES)
SCALE: 3" = 1'-0" REF. DOOR SCHED. THIS SHEET

| SHEET NO. A-9 OF NINE | PROJECT: TAX COLLECTOR OFFICE EXPANSION FOR: INDIAN RIVER COUNTY, FLORIDA 1800 27TH STREET - BUILDING B VERO BEACH FL 32960 | SEAL: _____ | EDLUND · DRITENBAS · BINKLEY ARCHITECTS AND ASSOCIATES, P.A. AR-AA C000886 65 ROYAL PALM POINTE, SUITE "D" VERO BEACH, FLORIDA 32960 PHONE: (772) 569-4320 | | | | | | | | | |
|---|--|--------------------------------|--|-----------|--------|--|--------------------------|---------|--|--------------------------------|---|--|
| COMM. NO: 1202001B DATE: 2 JUNE 2021 BY: JNR CHN: FB | REVISIONS <table border="1" style="width: 100%; border-collapse: collapse;"> <tr> <th>NO.</th> <th>DATE</th> <th>REVISIONS</th> </tr> <tr> <td>8DEC21</td> <td></td> <td>PLAN REVISION CORRECTION</td> </tr> <tr> <td>28JUL21</td> <td></td> <td>REVISED PER BLDG DEPT COMMENTS</td> </tr> </table> | NO. | DATE | REVISIONS | 8DEC21 | | PLAN REVISION CORRECTION | 28JUL21 | | REVISED PER BLDG DEPT COMMENTS | © J.N.B. 21. THESE PLANS AND SPECIFICATIONS ARE THE PROPERTY OF EDLUND DRITENBAS BINKLEY ARCHITECTS AND ASSOCIATES, P.A. AND ARE TO BE USED ONLY FOR THE PROJECT AND SITE SPECIFICALLY IDENTIFIED HEREIN. ANY REUSE OR REPRODUCTION OF THESE PLANS WITHOUT WRITTEN PERMISSION IS STRICTLY PROHIBITED. | PLAN REVISION CORRECTION REVISED PER BLDG DEPT COMMENTS |
| NO. | DATE | REVISIONS | | | | | | | | | | |
| 8DEC21 | | PLAN REVISION CORRECTION | | | | | | | | | | |
| 28JUL21 | | REVISED PER BLDG DEPT COMMENTS | | | | | | | | | | |