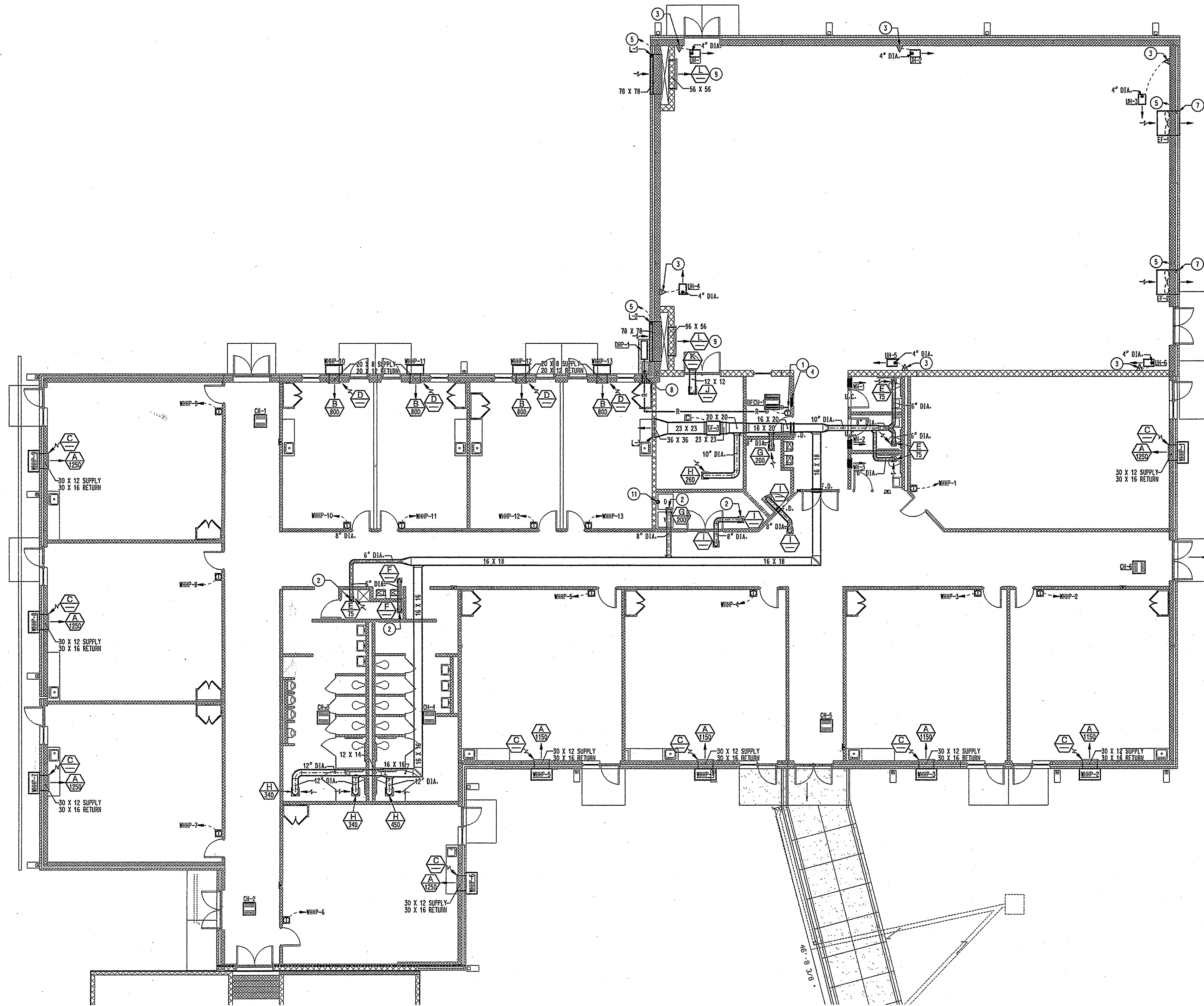
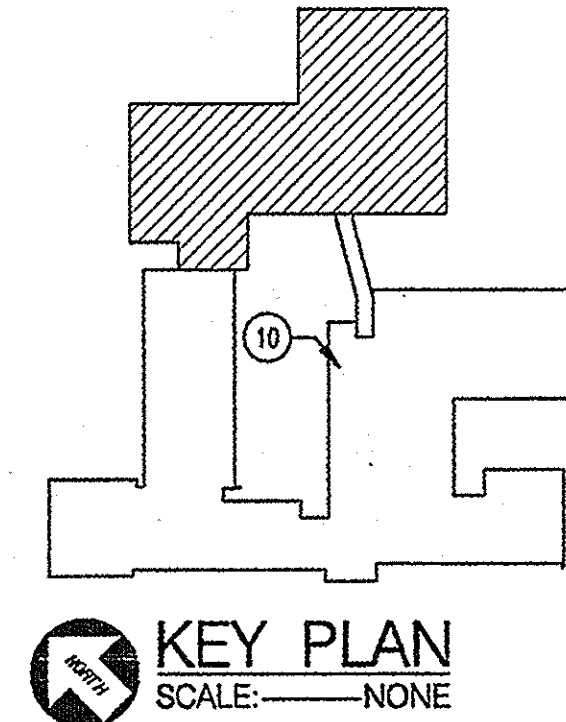


These drawings are the property of Wood, Morris & Associates Architects/Planners Inc. and may not be used or copied in whole or in part without the written consent of the architect. Any infringement is subject to legal action.



**MECHANICAL FLOOR PLAN**  
SCALE: 1/8" = 1'-0"



**KEY PLAN**  
SCALE: NONE

- NOTES: (THIS SHEET ONLY)**
- 1 ROUTE, SLOPED, INSULATED, COPPER CONDENSATE DRAIN LINE TO DISCHARGE INTO FLOOR DRAIN OR NEAREST PLUMBING CONNECTION PROVIDED ABOVE CEILING. SEE DETAIL 2, SHEET M2.
  - 2 PROVIDE FIRE DAMPER IN DUCT DROP THROUGH HORIZONTAL FIRE PARTITION. SEE DETAIL 6, SHEET M2.
  - 3 24V SMP-ACTION THERMOSTAT TO START UNIT HEATER UPON A TEMPERATURE DROP BELOW 70°F (ADJUSTABLE). MOUNT ON WALL 7'-0" A.F.F. BEHIND LOCKING METAL COVER.
  - 4 OVM HVAC CONTROL PANEL (NEMA 1) RECESSED-MOUNTED IN WALL WITH LOCKABLE COVER FOR EXHAUST FANS, LOUVERS, AND UNIT HEATERS. SEE DETAIL 3, SHEET M2.
  - 5 POWER WIRING PROVIDED BY DIVISION 16 FOR LOUVER DAMPERS AND EXHAUST FANS IS ROUTED VIA HVAC CONTROL PANEL (NOTE 4). INTERLOCK LOUVER MOTORS WITH CUMMINS EXHAUST FANS SO THAT ALL LOUVERS OPEN PRIOR TO ANY EXHAUST FAN STARTING.
  - 6 GENERAL: ROUTE ALL CONDUIT AND WIRING CONCEALED IN WALL.
  - 7 MOTORIZED DAMPER OPENS PRIOR TO FAN STARTING.
  - 8 PROVIDE PIPE SLEEVE WHERE REFRIGERANT PIPING PENETRATES WALL. SEE DETAIL 6, SHEET M2.
  - 9 MOUNT GRILLE(S) 0'-6" A.F.F.
  - 10 CONNECT NEW CONTROL COMPONENTS TO EXISTING DDC CONTROL PANEL AT THIS APPROXIMATE LOCATION (SEE KEY PLAN).
  - 11 DRYER EXHAUST DUCT RISES FROM DRYER (BY OTHERS) THROUGH ROOF. MAINTAIN FIRE RESISTANCE RATING OF HORIZONTAL FIRE PARTITION. RESIDENTIAL DRYER VENT EXHAUST AIR SYSTEM SHALL BE CONSTRUCTED OF MINIMUM 26 GAUGE GALVANIZED STEEL AND SEALED WITH DUCT SEALANT. SHEET METAL SCREWS ARE NOT PERMITTED. SEE DETAIL 1, SHEET M2.

**WOOD, MORRIS, & ASSOCIATES, INC.**  
Architects/Planners  
348 Cotton Ave. Suite 600  
P.O. Box 110  
Macon, Ga. 31202-0110  
PHONE: (478) 745-4945  
FAX: (478) 745-1380

**ADDITION TO:  
BERND  
ELEMENTARY  
MACON,  
GEORGIA**

REVISION 3:	4 / 2 / 03
DATE:	11 / 8 / 02
SCALE:	1/8" = 1'-0"
DRAWN BY:	DRLMRS
CHECKED BY:	JCS
PROJECT NO:	2002-16

**MECHANICAL  
FLOOR PLAN**

SHEET NUMBER:  
**M1**  
SHEET OF

**ANDREWS, HAMMOCK & POWELL, INC.**  
250 Cherokee Lane  
Suite 100  
Macon, Georgia 31210  
Phone: (478) 405-8301  
Fax: (478) 405-8210  
WWW.AHPENR.COM