

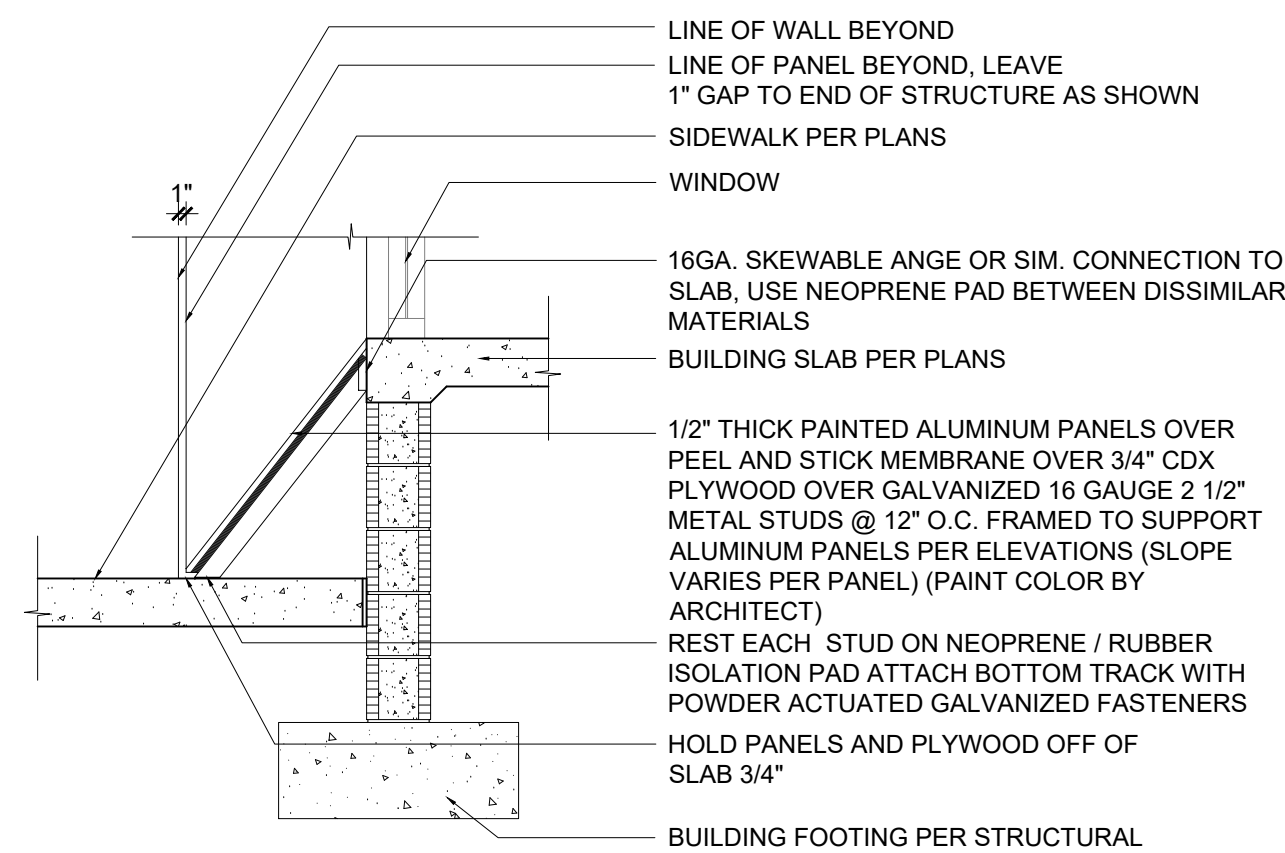
ISSUE	DATE
BID SET	4.7.20
ADDENDUM 3	5.12.20

**CAMPBELL
POOL ENTRY
PAVILION AND
POOL AREA
IMPROVEMENTS**

400 Dr. M.L.K Jr. BLVD
DAYTONA BEACH, FL
32114

SCALE:	AS NOTED
DRAWN:	BCC
CHECKED:	BCC
PROJECT NO:	2018-044

A9.1

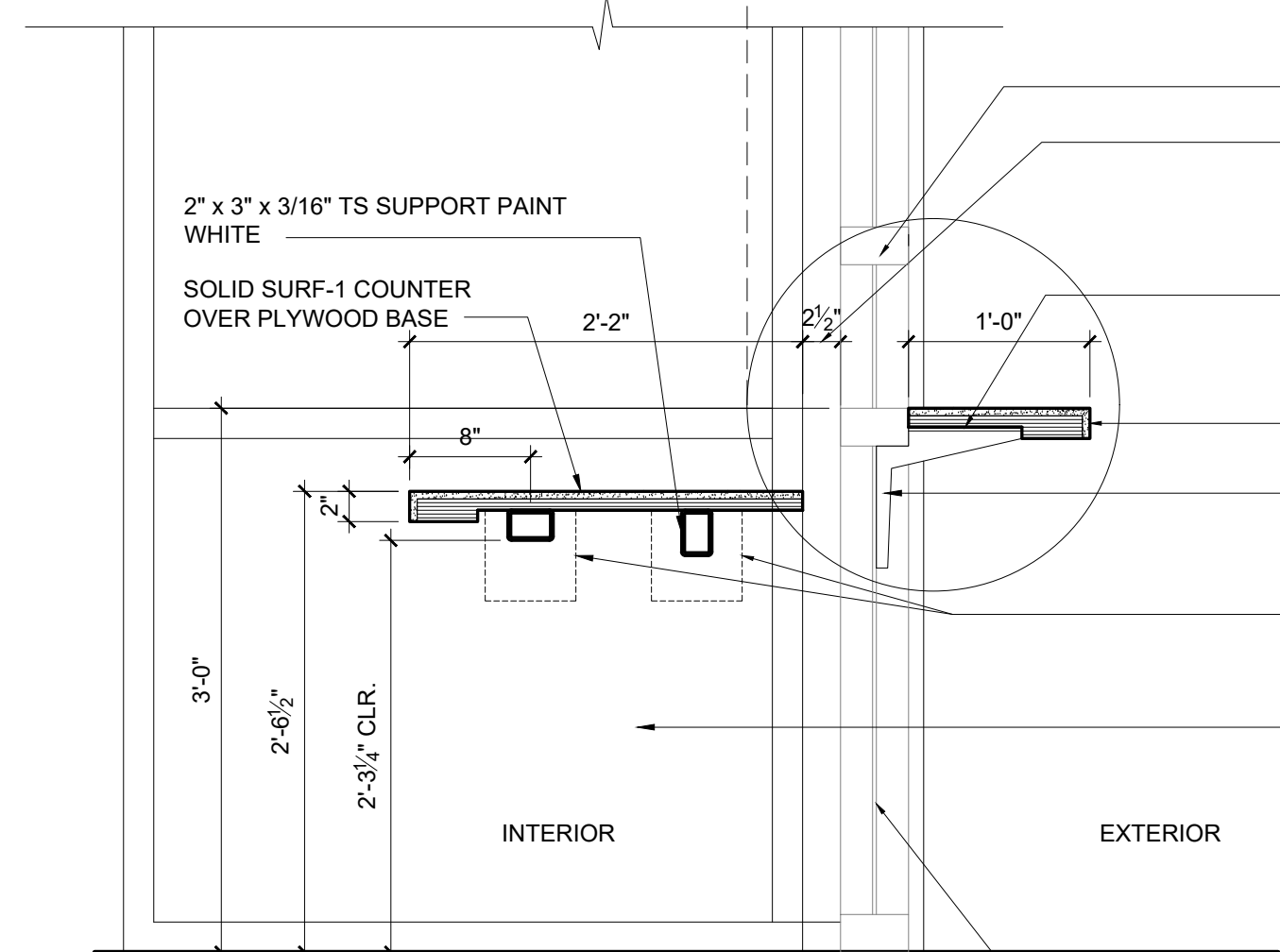
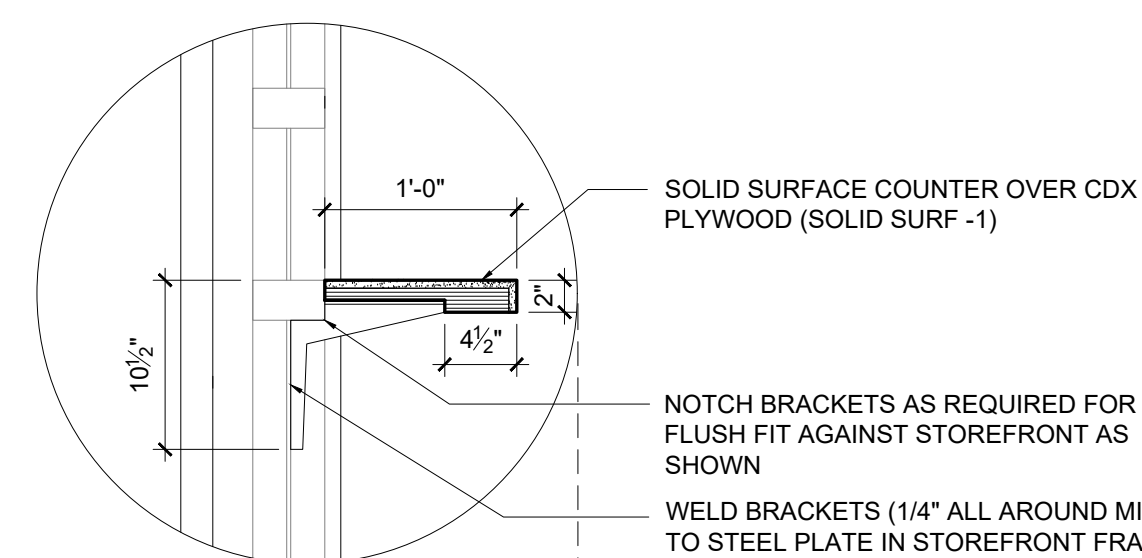


5 ALUM. PANEL DETAIL

SCALE: 1/2" = 1'-0"

NOTE: CONTRACTOR TO PROVIDE AND INSTALL A COMPLETE "MOCK-UP" OF PANELS WITH PLYWOOD PRIOR TO FABRICATION OF ALUMINUM PANELS.

NOTE:
FASTEN PLYWOOD TO METAL STUDS WITH #10 S.S. SELF DRILLING WAFER HEAD SCREW WITH WINGS @ 12" O.C. EACH STUD
FASTEN ALUMINUM PANELS TO PLYWOOD WITH TAPERED HEAD #10 S.S. SHEET METAL SCREWS @ 24" O.C. EACH STUD (COUNTERSINK FOR A FLUSH FINISH) SCREW HEADS TO BE UNPAINTED
PAINT / PRIMER TO BE APPLIED TO PANELS WITH AIRLESS SPRAYER IN A CONTROLLED ENVIRONMENT



6 DESK + COUNTER DETAIL

SCALE: 1/2" = 1'-0"

1/2" BLUE BOARD WITH LEVEL 5 SANDED PLASTER FINISH OVER 3/4" P.T. FURRING OVER R7 MIN. RIGID INSULATION (TYPICAL AT ALL CMU WALLS)

FIRESTONE UC3 METAL ROOFING OR EQUAL. COLOR: CITYSCAPE, SUBMIT FOR SAMPLE APPROVAL

METAL ROOFING OVER 5/8" CDX OVER 2X6 FRAMING @ 12" O.C.

ROOF FRAMING (CHANNELS) PER STRUCTURAL

1/2" CDX "NAILER" FOR BLUE BOARD AND CEDAR SOFFIT



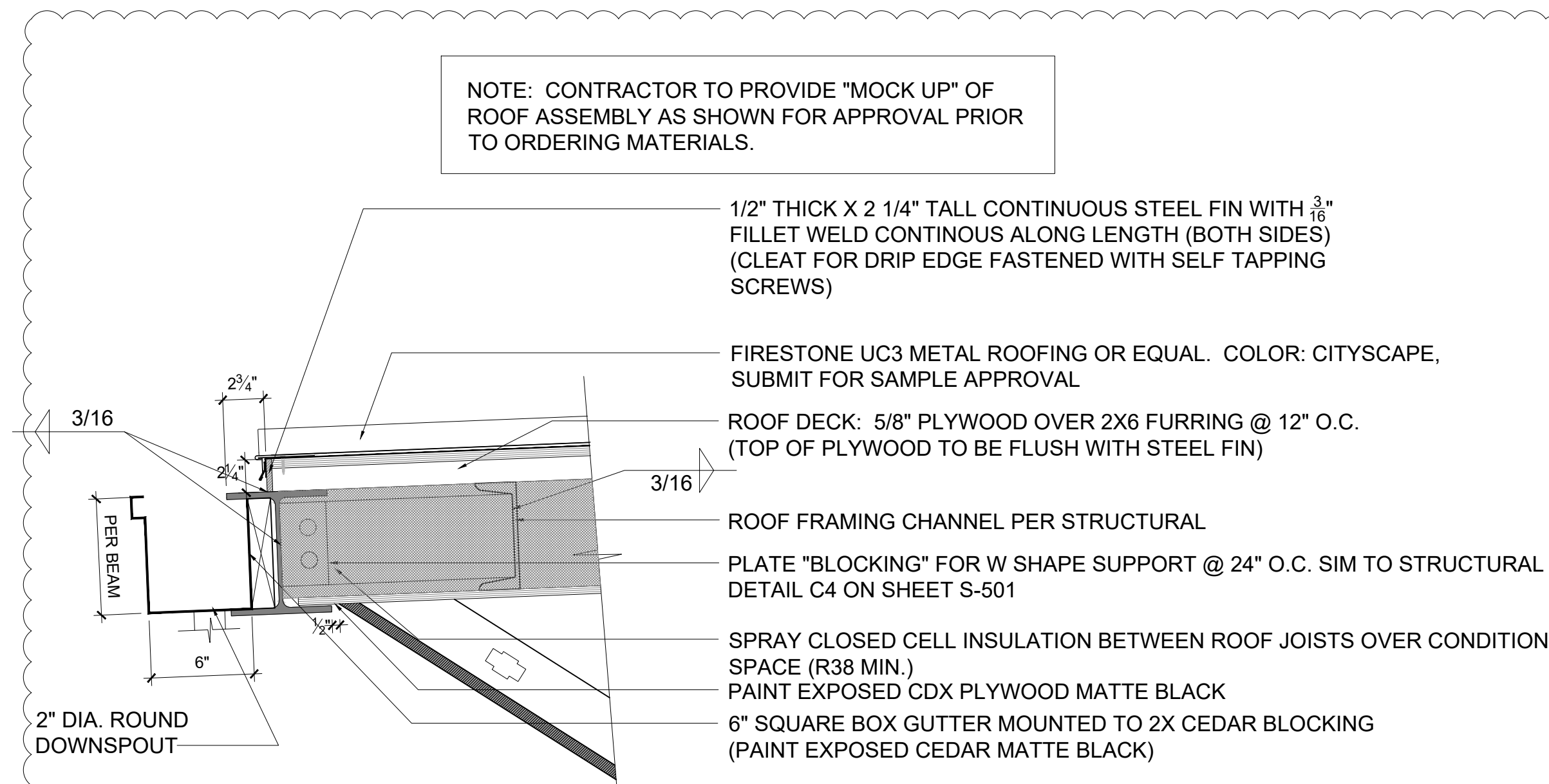
7 SOFFIT REVEAL @ CMU WALL

SCALE: 1-1/2" = 1'-0"

1X4 FLUSH FINISH CLEAR T&G CEDAR SOFFIT. HOLD BACK 1/2" ALL AROUND FOR A CONSISTENT REVEAL (TYPICAL). PAINT ANY EXPOSED CDX MATTE BLACK PRIOR TO INSTALL

FRYE REGLET FDM 615 - 50 FOR 5/8" THICK STUCCO. REVEAL IS CONTINUOUS AT ALL BLOCK WALLS (ANODIZED FINISH)

CMU WALL + BOND BEAM PER STRUCTURAL



1 ROOF EDGE LOWER DETAIL

SCALE: 1-1/2" = 1'-0"

NOTE: CONTRACTOR TO PROVIDE "MOCK UP" OF ROOF ASSEMBLY AS SHOWN FOR APPROVAL PRIOR TO ORDERING MATERIALS.

1/2" THICK X 2 1/4" TALL CONTINUOUS STEEL FIN WITH 3/16" FILLET WELD CONTINUOUS ALONG LENGTH (BOTH SIDES) (CLEAT FOR DRIP EDGE FASTENED WITH SELF TAPPING SCREWS)

FIRESTONE UC3 METAL ROOFING OR EQUAL. COLOR: CITYSCAPE, SUBMIT FOR SAMPLE APPROVAL

ROOF DECK: 5/8" PLYWOOD OVER 2X6 FURRING @ 12" O.C. (TOP OF PLYWOOD TO BE FLUSH WITH STEEL FIN)

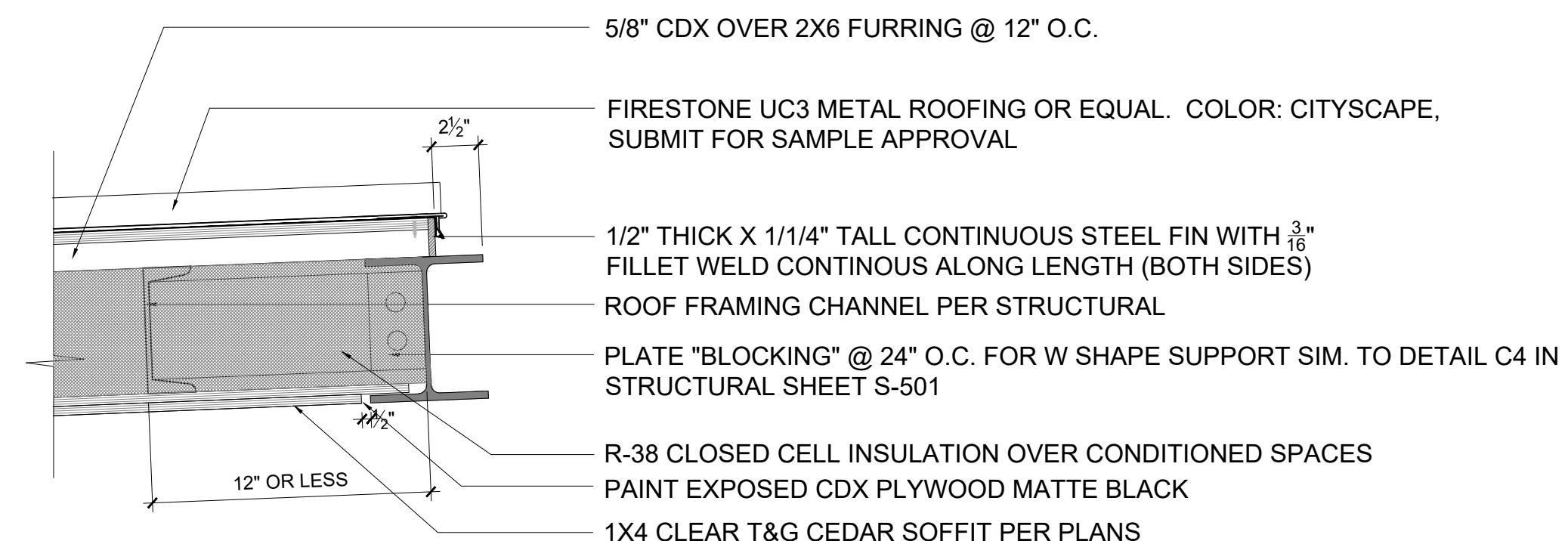
ROOF FRAMING CHANNEL PER STRUCTURAL

PLATE "BLOCKING" FOR W SHAPE SUPPORT @ 24" O.C. SIM TO STRUCTURAL DETAIL C4 ON SHEET S-501

SPRAY CLOSED CELL INSULATION BETWEEN ROOF JOISTS OVER CONDITIONED SPACE (R38 MIN.)

PAINT EXPOSED CDX PLYWOOD MATTE BLACK

6" SQUARE BOX GUTTER MOUNTED TO 2X CEDAR BLOCKING (PAINT EXPOSED CEDAR MATTE BLACK)



2 ROOF EDGE UPPER DETAIL

SCALE: 1-1/2" = 1'-0"

5/8" CDX OVER 2X6 FURRING @ 12" O.C.

FIRESTONE UC3 METAL ROOFING OR EQUAL. COLOR: CITYSCAPE, SUBMIT FOR SAMPLE APPROVAL

1/2" THICK X 1/4" TALL CONTINUOUS STEEL FIN WITH 3/16" FILLET WELD CONTINUOUS ALONG LENGTH (BOTH SIDES)

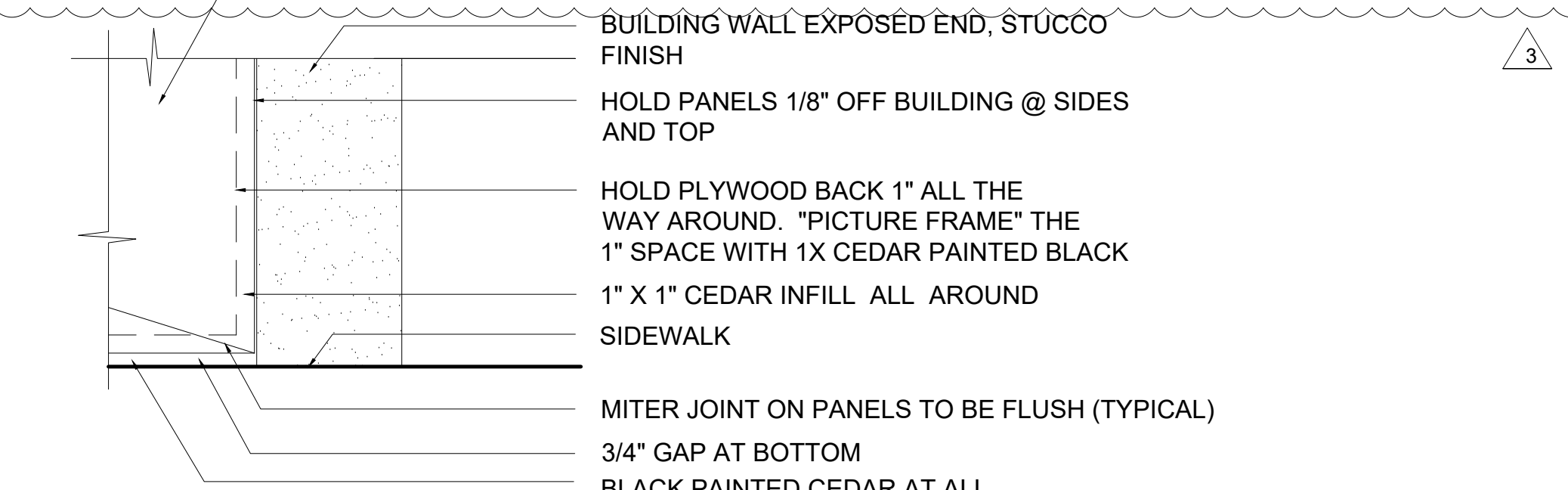
ROOF FRAMING CHANNEL PER STRUCTURAL

PLATE "BLOCKING" @ 24" O.C. FOR W SHAPE SUPPORT SIM. TO DETAIL C4 IN STRUCTURAL SHEET S-501

R-38 CLOSED CELL INSULATION OVER CONDITIONED SPACES

PAINT EXPOSED CDX PLYWOOD MATTE BLACK

1X4 CLEAR T&G CEDAR SOFFIT PER PLANS



3 PANEL EDGE DETAIL

SCALE: 1-1/2" = 1'-0"

POWDER COATED ALUM. PANEL

BUILDING WALL EXPOSED END, STUCCO FINISH

HOLD PANELS 1/8" OFF BUILDING @ SIDES AND TOP

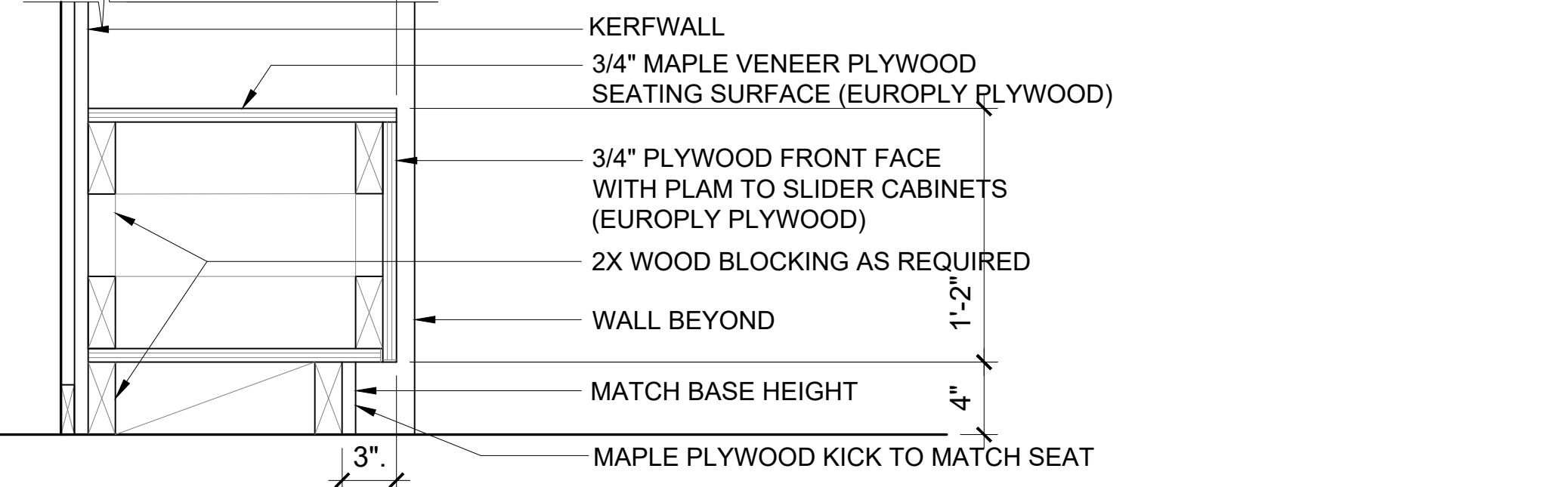
HOLD PLYWOOD BACK 1" ALL THE WAY AROUND. "PICTURE FRAME" THE 1" SPACE WITH 1X CEDAR PAINTED BLACK

1" X 1" CEDAR INFILL ALL AROUND SIDEWALK

MITER JOINT ON PANELS TO BE FLUSH (TYPICAL)

3/4" GAP AT BOTTOM

BLACK PAINTED CEDAR AT ALL VISIBLE LOCATIONS EXCEPT BOTTOM. USE COMPOSITE MATERIAL PAINTED BLACK WHEN IN CONTACT WITH CONCRETE WALK



4 PLYWOOD SEAT

SCALE: 1-1/2" = 1'-0"

KERFWALL

3/4" MAPLE VENEER PLYWOOD SEATING SURFACE (EUROPLY PLYWOOD)

3/4" PLYWOOD FRONT FACE WITH PLAM TO SLIDER CABINETS (EUROPLY PLYWOOD)

2X WOOD BLOCKING AS REQUIRED

WALL BEYOND

MATCH BASE HEIGHT

MAPLE PLYWOOD KICK TO MATCH SEAT