



**THE CITY OF DAYTONA BEACH
OFFICE OF THE PURCHASING AGENT**

Post Office Box 2451
Daytona Beach, Florida 32115-2451

Phone (386) 671-8080
Fax (386) 671-8085

ADDENDUM NO. 2

DATE: April 30, 2020
PROJECT: ITB 20473
CAMPBELL POOL ENTRY PAVILLION
OPENING DATE: MAY 21, 2020

This addendum is hereby incorporated into the Bid Documents for the project referenced above. The following items are clarifications, corrections, additions, deletions and/or revisions to and shall take precedence over the original documents. Additions are indicated by underlining, deletions are indicated by ~~striketrough~~.

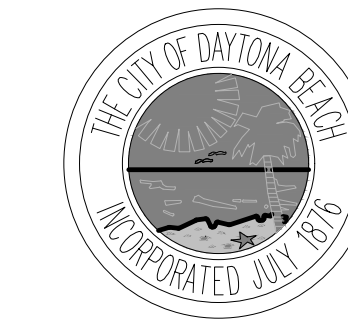
1. Attached are revised A1.1-site plan and A3.1-Exterior Elevation plan
 - 1.1 a. Sidewalk connection to MLK Boulevard has note about adjusting sidewalk run around existing utilities
 - b. Note added regarding demolition of concrete slab and ramp on the east side of the existing pump house
 - 3.1 Note added to match existing chain link fencing gauge and color added to sheet.
2. All other terms and conditions remain the same.

The Bidder shall acknowledge receipt of this addendum on the Bid Proposal Form.

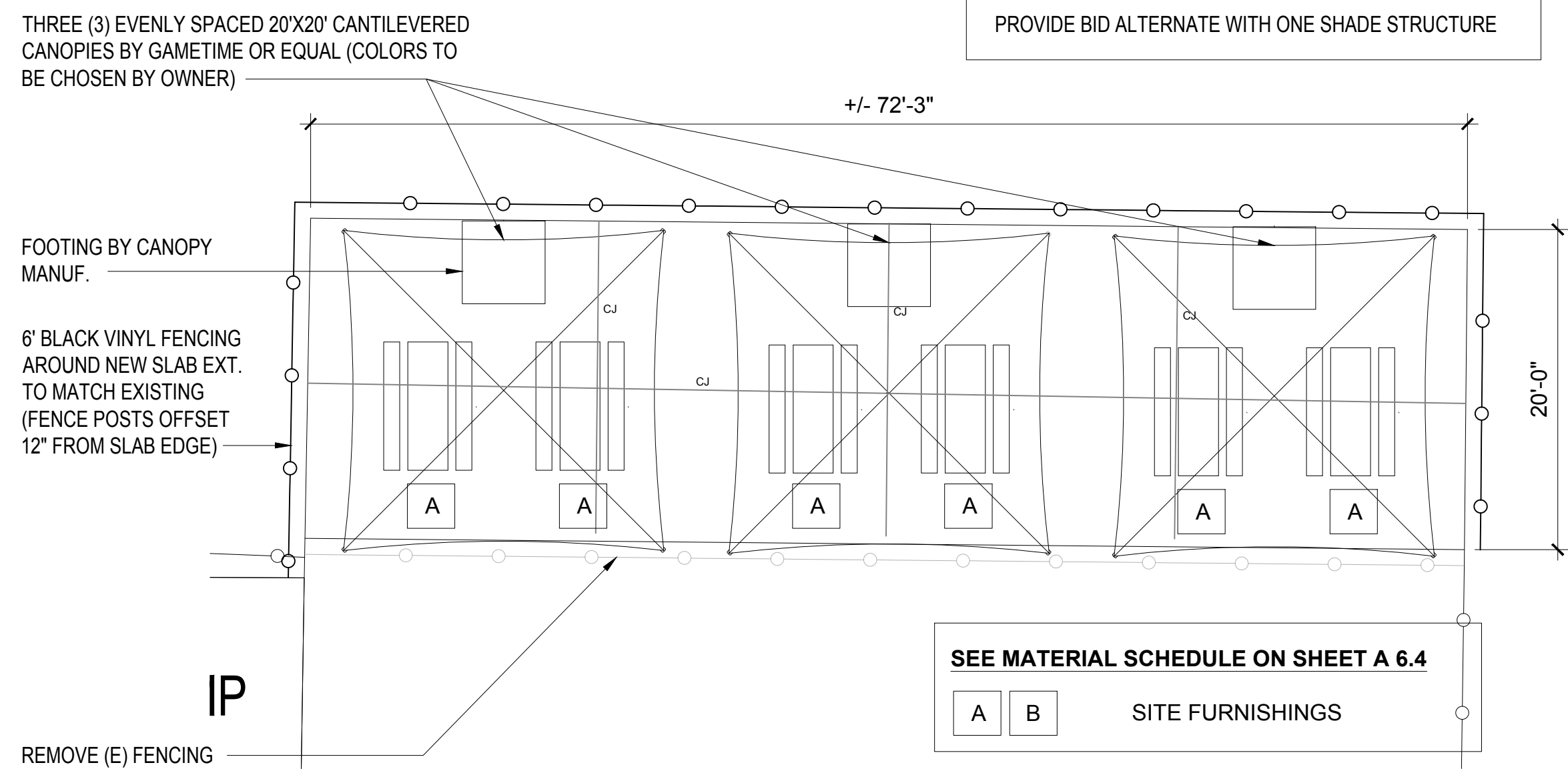
The City of Daytona Beach

Kirk Zimmerman, CPPB
Buyer

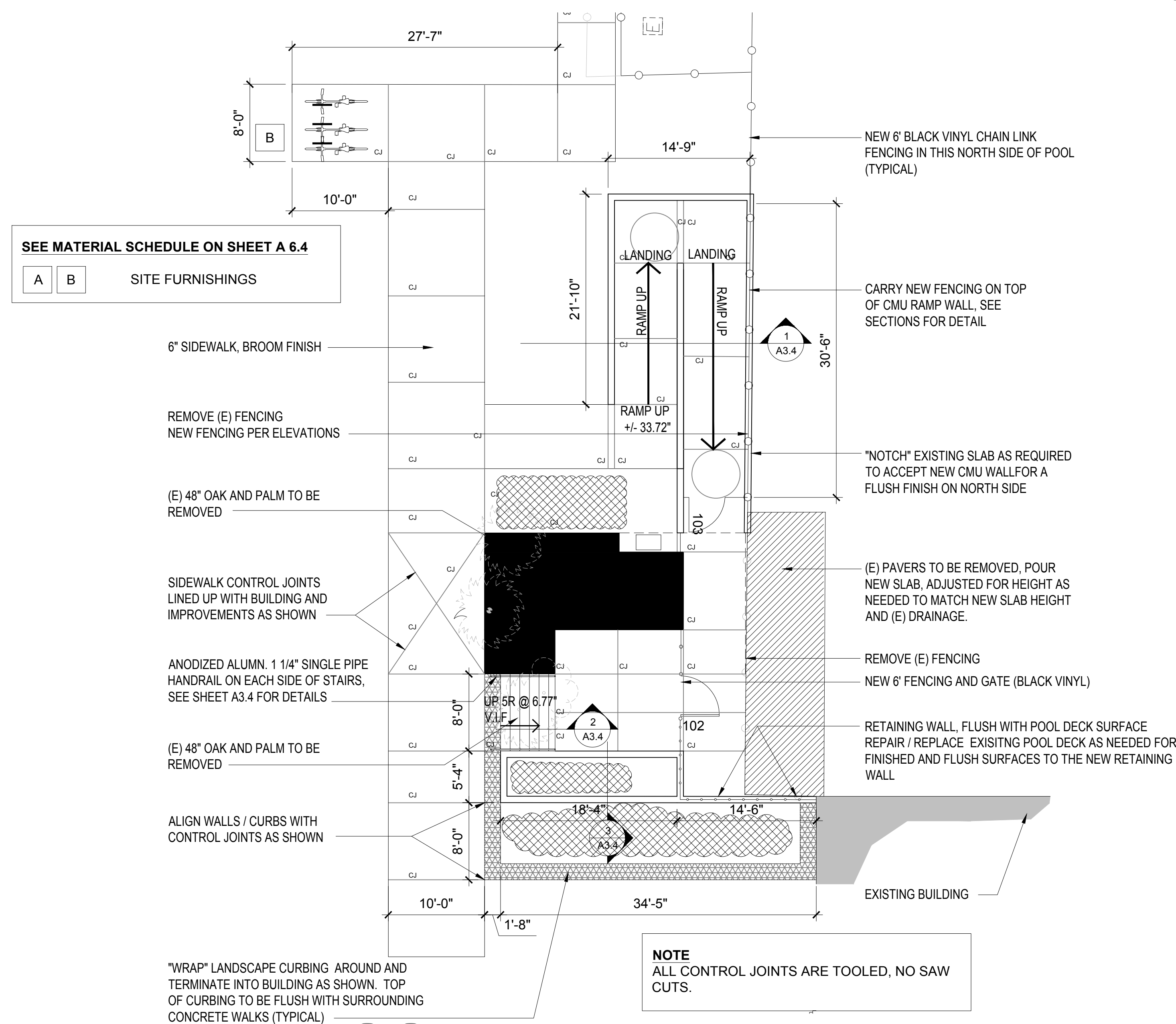
Posted online at <https://www.codb/841.us>



BRENT COHEN, ARCHITECT
FL LICENSE # AR93854

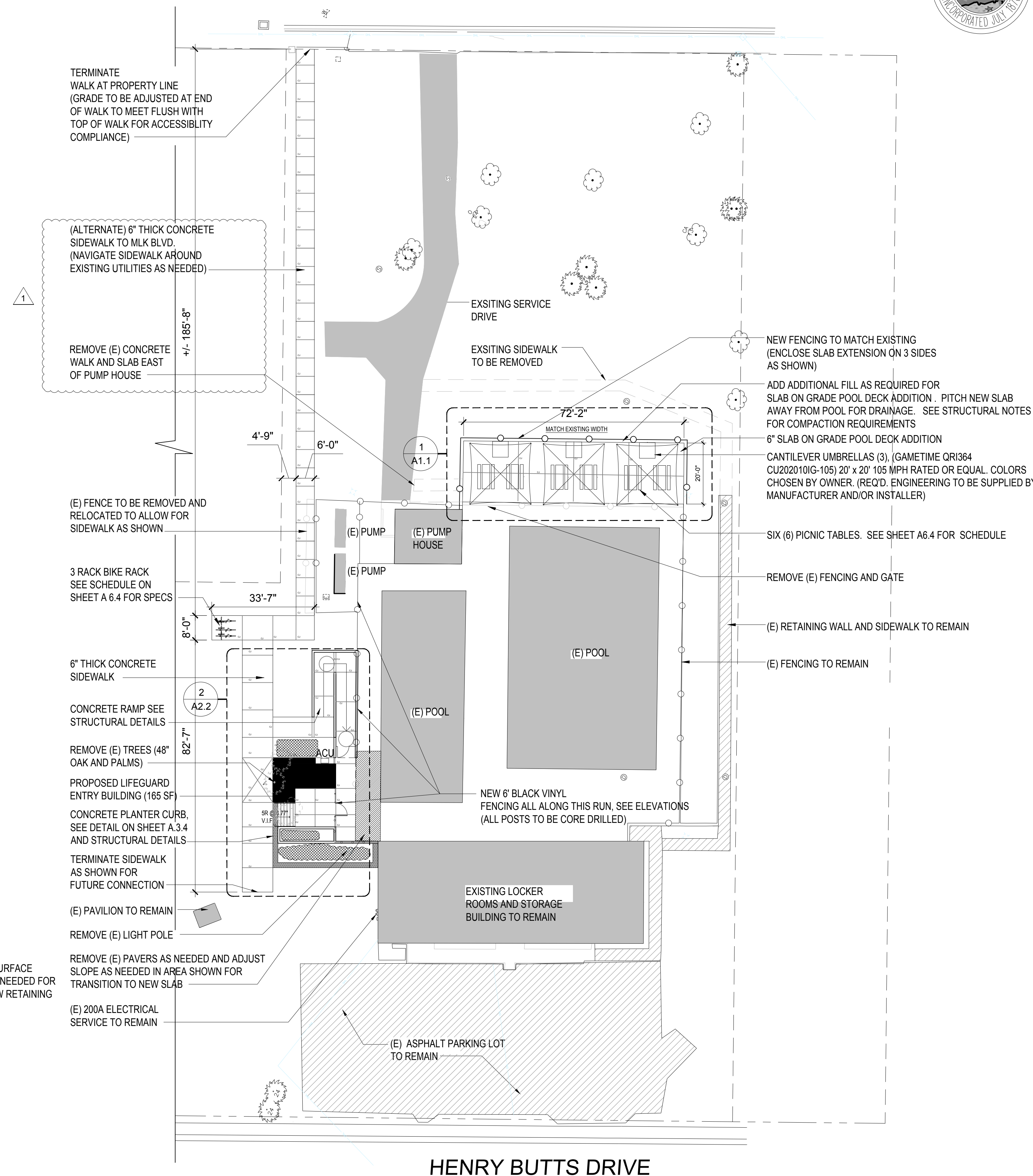


1 POOL DECK EXTENSION FLOOR PLAN
SCALE: 1/8" = 1'-0"



2 ENTRY PAVILION SITE PLAN
SCALE: 1/8" = 1'-0"

S DR MARTIN LUTHER KING JR BOULEVARD



SITE PLAN
SCALE: 1" = 20'-0"

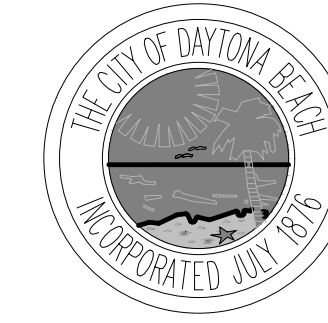
ISSUE	DATE
BID SET	4.7.20
ADDENDUM	4.30.20

CAMPBELL POOL ENTRY PAVILION AND POOL AREA IMPROVEMENTS

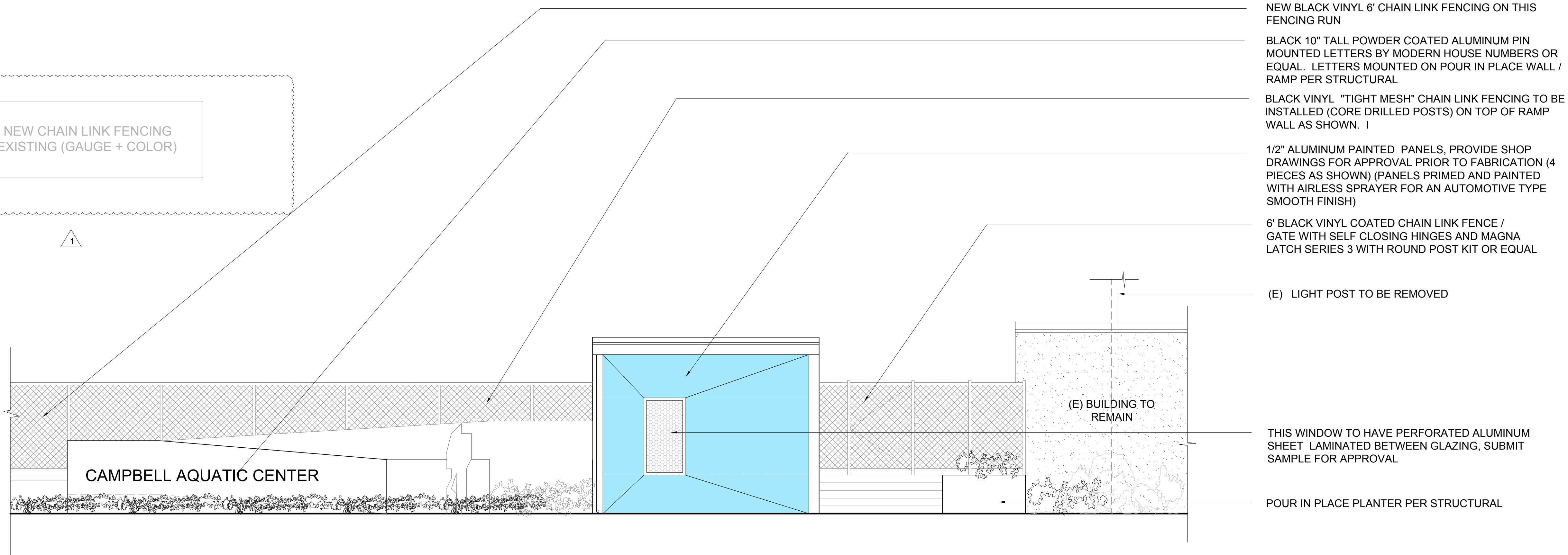
400 Dr. M.L.K Jr. BLVD
DAYTONA BEACH, FL
32114

SCALE: AS NOTED
DRAWN: BCC
CHECKED: BCC
PROJECT NO: 2018-044

A1.1



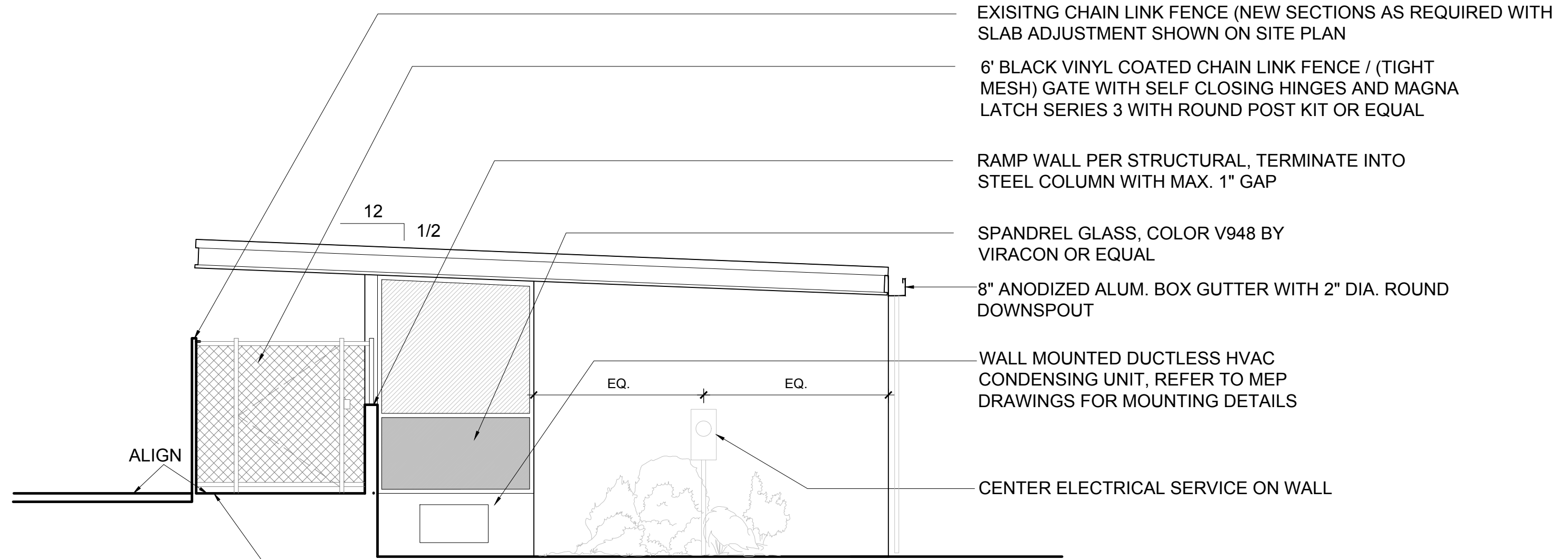
NOTE: ALL NEW CHAIN LINK FENCING TO MATCH EXISTING (GAUGE + COLOR)



1 NORTH ELEVATION
1/4" = 1'-0"

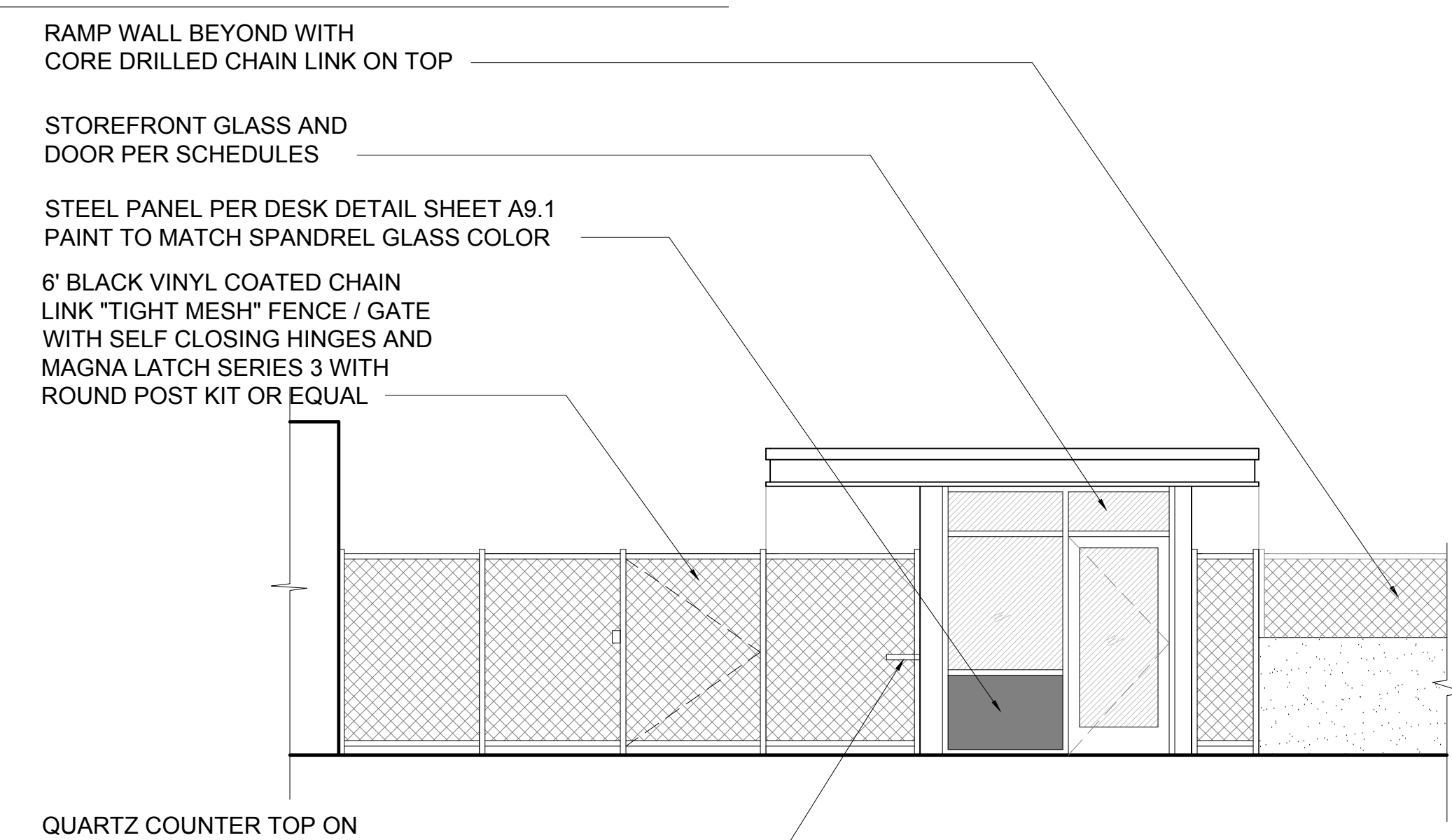
- NEW BLACK VINYL 6' CHAIN LINK FENCING ON THIS FENCING RUN
- BLACK 10" TALL POWDER COATED ALUMINUM PIN MOUNTED LETTERS BY MODERN HOUSE NUMBERS OR EQUAL. LETTERS MOUNTED ON POUR IN PLACE WALL / RAMP PER STRUCTURAL
- BLACK VINYL "TIGHT MESH" CHAIN LINK FENCING TO BE INSTALLED (CORE DRILLED POSTS) ON TOP OF RAMP WALL AS SHOWN. I
- 1/2" ALUMINUM PAINTED PANELS, PROVIDE SHOP DRAWINGS FOR APPROVAL PRIOR TO FABRICATION (4 PIECES AS SHOWN) (PANELS PRIMED AND PAINTED WITH AIRLESS SPRAYER FOR AN AUTOMOTIVE TYPE SMOOTH FINISH)
- 6' BLACK VINYL COATED CHAIN LINK FENCE / GATE WITH SELF CLOSING HINGES AND MAGNA LATCH SERIES 3 WITH ROUND POST KIT OR EQUAL
- (E) LIGHT POST TO BE REMOVED
- (E) BUILDING TO REMAIN
- THIS WINDOW TO HAVE PERFORATED ALUMINUM SHEET LAMINATED BETWEEN GLAZING, SUBMIT SAMPLE FOR APPROVAL
- POUR IN PLACE PLANTER PER STRUCTURAL

ISSUE	DATE
BID SET	4.7.20
ADDENDUM	4.30.20



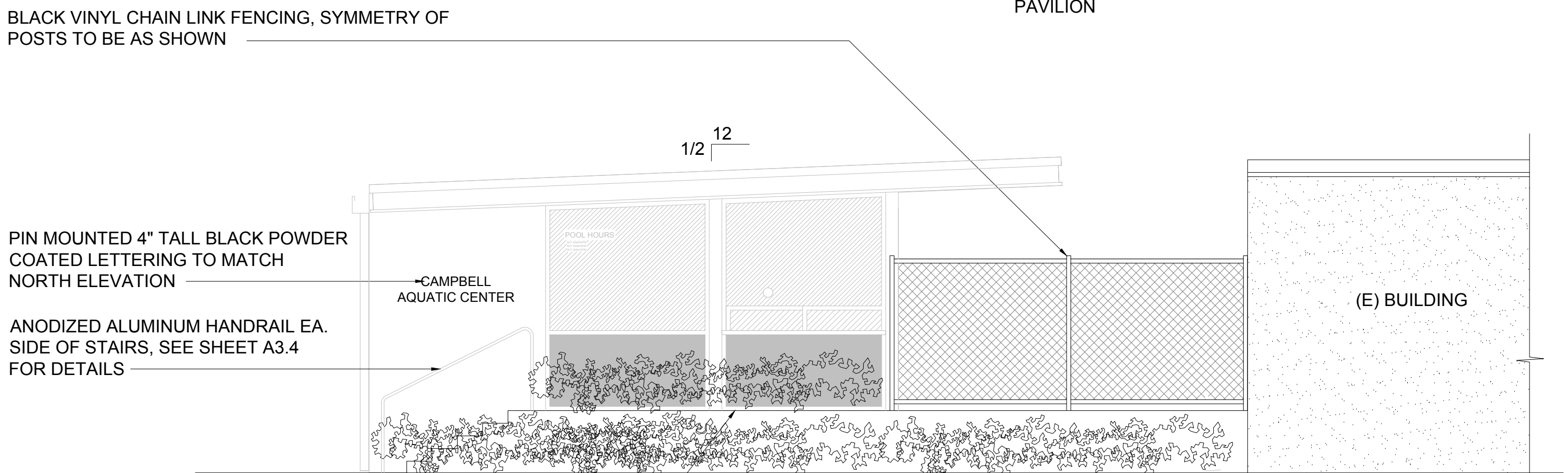
3 EAST ELEVATION
1/4" = 1'-0"

- EXISTING CHAIN LINK FENCE (NEW SECTIONS AS REQUIRED WITH SLAB ADJUSTMENT SHOWN ON SITE PLAN)
- 6' BLACK VINYL COATED CHAIN LINK FENCE / (TIGHT MESH) GATE WITH SELF CLOSING HINGES AND MAGNA LATCH SERIES 3 WITH ROUND POST KIT OR EQUAL
- RAMP WALL PER STRUCTURAL, TERMINATE INTO STEEL COLUMN WITH MAX. 1" GAP
- SPANDREL GLASS, COLOR V948 BY VIRACON OR EQUAL
- 8" ANODIZED ALUM. BOX GUTTER WITH 2" DIA. ROUND DOWNSPOUT
- WALL MOUNTED DUCTLESS HVAC CONDENSING UNIT, REFER TO MEP DRAWINGS FOR MOUNTING DETAILS
- CENTER ELECTRICAL SERVICE ON WALL
- MATCH RAMP LANDING WITH EXISTING POOL DECK HEIGHT. ADJUST POOL DECK AS NEEDED FOR COMPLIANT FLUSH FINISH AND CONTINUATION OF DRAINAGE AWAY FROM POOL AND AWAY FROM NEW PAVILION



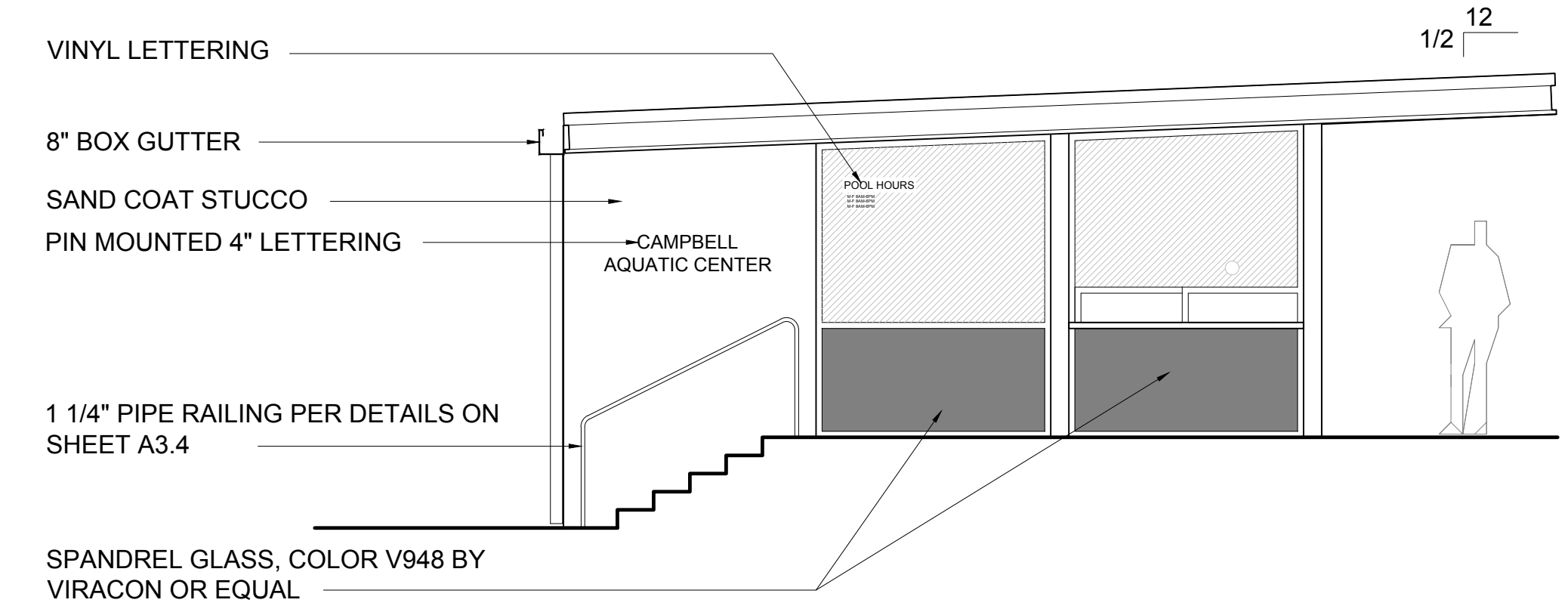
2 SOUTH ELEVATION
1/4" = 1'-0"

- RAMP WALL BEYOND WITH CORE DRILLED CHAIN LINK ON TOP
- STOREFRONT GLASS AND DOOR PER SCHEDULES
- STEEL PANEL PER DESK DETAIL SHEET A9.1 PAINT TO MATCH SPANDREL GLASS COLOR
- 6' BLACK VINYL COATED CHAIN LINK "TIGHT MESH" FENCE / GATE WITH SELF CLOSING HINGES AND MAGNA LATCH SERIES 3 WITH ROUND POST KIT OR EQUAL
- QUARTZ COUNTER TOP ON BRACKETS



5 WEST ELEVATION
1/4" = 1'-0"

- BLACK VINYL CHAIN LINK FENCING, SYMMETRY OF POSTS TO BE AS SHOWN
- PIN MOUNTED 4" TALL BLACK POWDER COATED LETTERING TO MATCH NORTH ELEVATION
- ANODIZED ALUMINUM HANDRAIL EA. SIDE OF STAIRS, SEE SHEET A3.4 FOR DETAILS
- LINE OF STAIRS AND POOL DECK BEYOND



4 WEST ELEVATION
1/4" = 1'-0"

- VINYL LETTERING
- 8" BOX GUTTER
- SAND COAT STUCCO
- PIN MOUNTED 4" LETTERING
- 1 1/4" PIPE RAILING PER DETAILS ON SHEET A3.4
- SPANDREL GLASS, COLOR V948 BY VIRACON OR EQUAL

CAMPBELL POOL ENTRY PAVILION AND POOL AREA IMPROVEMENTS

400 Dr. M.L.K Jr. BLVD
DAYTONA BEACH, FL 32114

SCALE:	AS NOTED
DRAWN:	BCC
CHECKED:	BCC
PROJECT NO:	2018-044

A3.1