

LINETYPE LEGEND

| | |
|-----|-----------------------|
| --- | LIMITS OF DISTURBANCE |
| --- | EXISTING CONTOURS |
| --- | PROPERTY LINE |
| --- | SEWER LINE |
| --- | STORM WATER |
| --- | OVERHEAD POWER |
| --- | FENCE |
| --- | EASEMENTS |

*****CAUTION*****

PALMETTO UTILITY LOCATION SERVICE

3 DAYS BEFORE DIGGING CALL
TOLL FREE 1-800-922-9983

A ONE CALL SYSTEM FOR COMMUNITY AND JOB SAFETY.

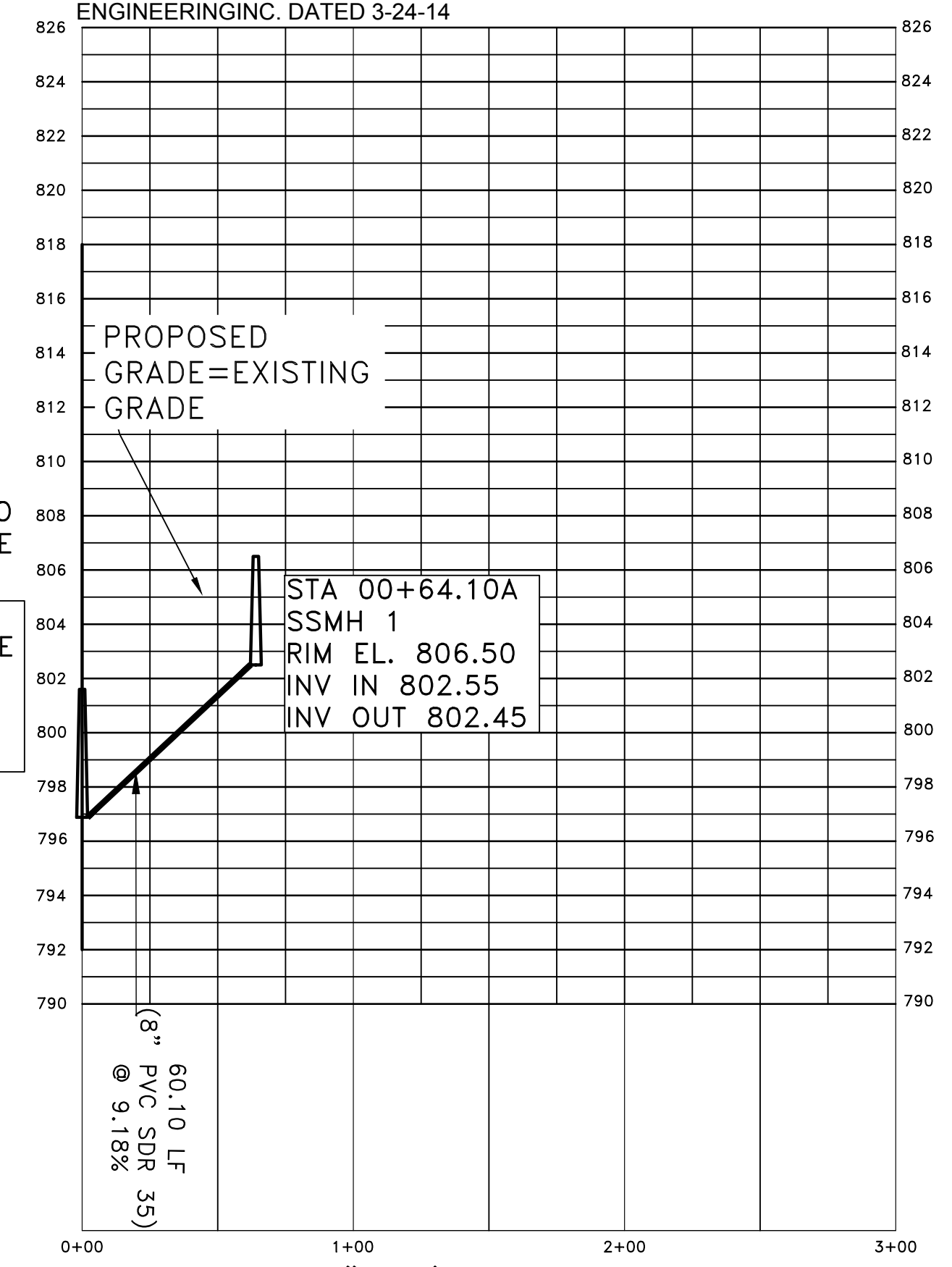
THE UTILITIES SHOWN ARE SHOWN FOR THE CONTRACTOR'S CONVENIENCE ONLY. THERE MAY BE OTHER UTILITIES NOT SHOWN ON THESE PLANS. THE ENGINEER ASSUMES NO RESPONSIBILITY FOR THE LOCATIONS SHOWN AND IT SHALL BE THE CONTRACTOR'S RESPONSIBILITY TO VERIFY THE LOCATIONS OF ALL UTILITIES WITHIN THE LIMITS OF THE WORK. ALL DAMAGE MADE TO EXISTING UTILITIES BY THE CONTRACTOR SHALL BE THE SOLE RESPONSIBILITY OF THE CONTRACTOR.

- NOTES:**
1. ALL SEWER LINES TO BE CONSTRUCTED IN ACCORDANCE WITH THE STANDARD SPECIFICATIONS OF THE SPARTANBURG SANITARY SEWER DISTRICT DATED JUNE, 2009.
 2. CONTRACTOR TO VERIFY IN FIELD THAT ALL PROPOSED SSMH RIMS IN ASPHALT ARE FLUSH WITH SURFACE. ROAD GRADE SHOWN ON DRAWINGS ARE APPROXIMATE AND ARE TO BE COORDINATED WITH GRADING PLAN AND FIELD CONDITIONS PRIOR TO FINAL PAVING.
 3. CONTRACTOR TO VERIFY IN FIELD ALL CROSS LYING PIPE INTERSECTIONS TO MAINTAIN AN 18" CLEARANCE.
 4. ALL PIPE SECTIONS WITH LESS THAN 3 FEET COVER WILL BE DUCTILE IRON PIPE SECTIONS. CENTERED ON THE LOW POINT AND SPANNED UNTIL 3 FEET COVER IS ACHIEVED.
 5. ALL PVC PIPE SHALL BE SDR-35 INSTALLED PER SSSD STANDARD SPECS AND MANUFACTURERS RECOMMENDATIONS.
 6. ALL MANHOLES SHALL BE PRECAST CONCRETE PER SSSD STANDARD SPECS AND SSSD STANDARD DETAILS.

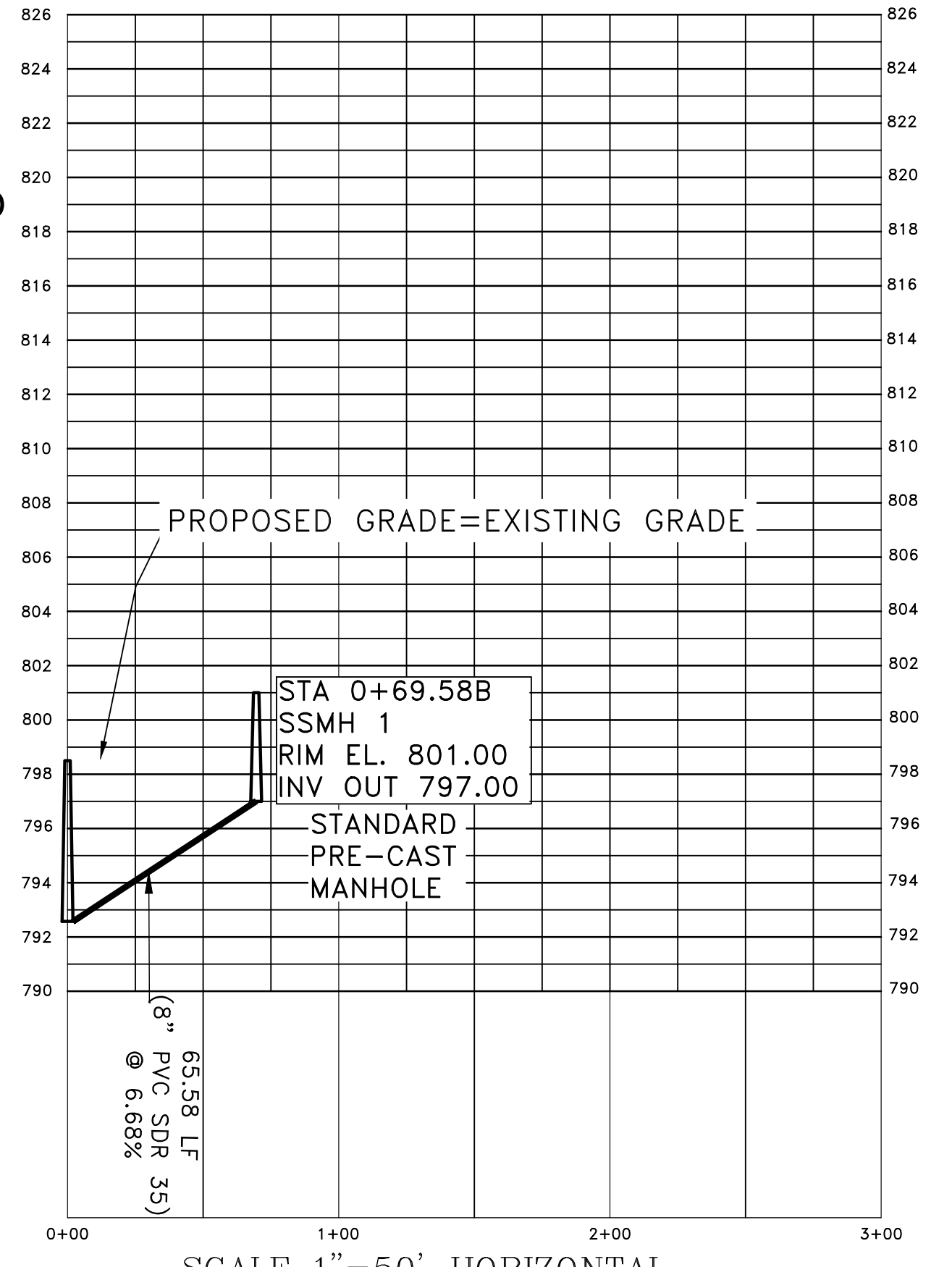
ALL GRAVITY SEWER LINES AND MANHOLES LESS THAN 6' IN DEPTH SHALL BE REMOVED AND THE RESULTING EXCAVATION FILLED WITH COMPACTED BACK-FILL. MANHOLES GREATER THAN 6' IN DEPTH SHALL HAVE THE UPPER 6' OF STRUCTURE REMOVED AND THE DEEPER SECTION FILLED WITH READY-MIX CONCRETE WHICH IS ALLOWED TO FLOW INTO ALL PIPE PENETRATIONS.

NOTE: STATION 0+00 IS LOCATED AT STATION 1+20.06 OF THE BRAWLEY STREET SEWER LINE RELOCATION PLANS BY MATRIX ENGINEERING INC. DATED 3-24-14

NOTE: STATION 0+00 IS LOCATED AT STATION 1+84.00 OF THE BRAWLEY STREET SEWER LINE RELOCATION PLANS BY MATRIX ENGINEERING INC. DATED 3-24-14



SCALE 1"=50' HORIZONTAL
SCALE 1"=5' VERTICAL
PROPOSED SEWER RELOCATION PROFILE LINE A



SCALE 1"=50' HORIZONTAL
SCALE 1"=5' VERTICAL
PROPOSED SEWER STUB-OUT PROFILE LINE B

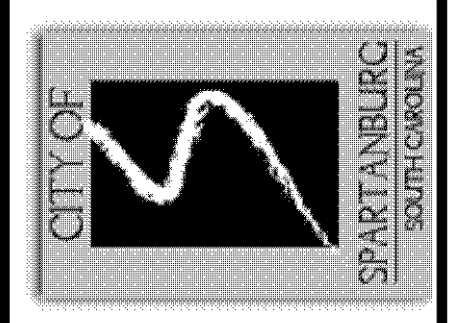
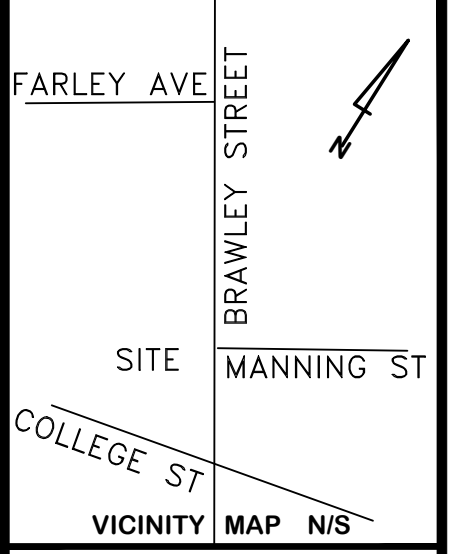
ENGINEER:
MATRIX ENGINEERING, INC.
912 SOUTH PINE STREET
SPARTANBURG, SC 29302
TEL: 864-583-6274

SURVEYOR:
SMITH LAVENDER AND ASSOCIATES INC.
2900 EAST MAIN STREET
SPARTANBURG, SC 29307

DISTURBED AREA:
0.14 ACRE

OWNER / DEVELOPER
CITY OF SPARTANBURG
PO BOX 1749
SPARTANBURG, S.C. 29304
(864)-596-2000

Professional Engineer Seal for Don A. Worley, No. 7982, State of South Carolina. Date: 6/2/17.



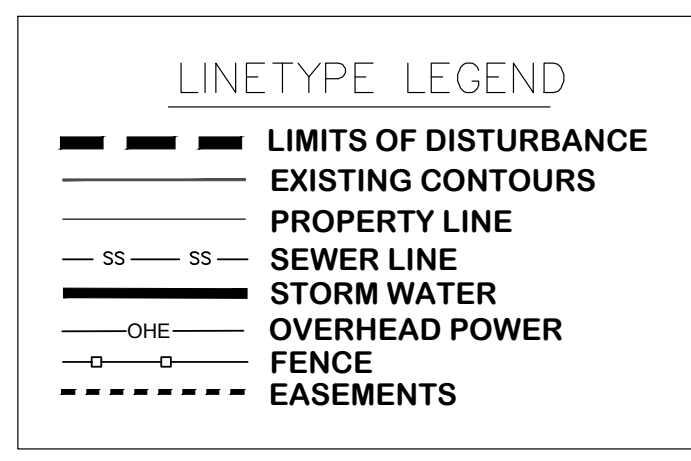
MATRIX ENGINEERING, INC.
912 South Pine Street
Spartanburg, South Carolina 29302
(864)583-6274 dworley@matrixei.com

PROJECT NUMBER: 2017-050

CITY OF SPARTANBURG, SOUTH CAROLINA
NEW BRAWLEY STREET SEWER RELOCATION AND EXTENSION
SEWER PLAN AND PROFILE
COUNTY GRID MAP # 7113

Project: CITY OF SPARTANBURG, SOUTH CAROLINA
Sheet Title: NEW BRAWLEY STREET SEWER RELOCATION AND EXTENSION

| | |
|-----------|-------------------------------|
| Engineer | Don Worley |
| Drawn By | Jonathan Stewart |
| Date | 03/29/17 |
| Revisions | |
| A | Issued for Review 4/10/17 |
| B | Issued for Review 4/12/17 |
| C | Issued for Permitting 5/18/17 |
| D | Issued for Permitting 5/28/17 |
| E | Issued for Permitting 6/02/17 |



*****CAUTION*****

PALMETTO UTILITY LOCATION SERVICE

3 DAYS BEFORE DIGGING CALL
TOLL FREE 1-800-922-9983

A ONE CALL SYSTEM FOR COMMUNITY AND JOB SAFETY.

THE UTILITIES SHOWN ARE SHOWN FOR THE CONTRACTOR'S CONVENIENCE ONLY. THERE MAY BE OTHER UTILITIES NOT SHOWN ON THESE PLANS. THE ENGINEER ASSUMES NO RESPONSIBILITY FOR THE LOCATIONS SHOWN AND IT SHALL BE THE CONTRACTOR'S RESPONSIBILITY TO VERIFY THE LOCATIONS OF ALL UTILITIES WITHIN THE LIMITS OF THE WORK. ALL DAMAGE MADE TO EXISTING UTILITIES BY THE CONTRACTOR SHALL BE THE SOLE RESPONSIBILITY OF THE CONTRACTOR.

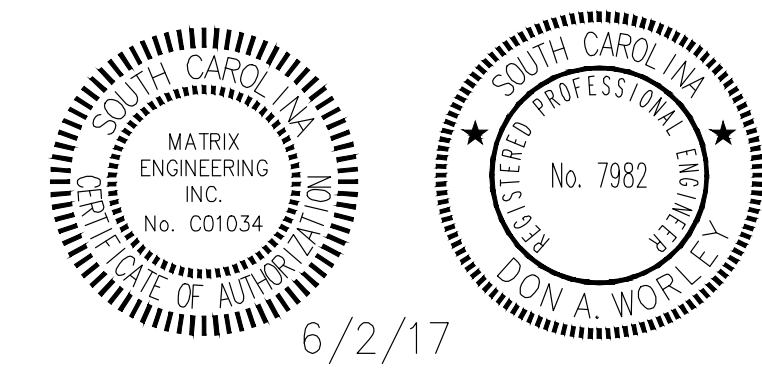
- NOTES:**
1. ALL SEWER LINES TO BE CONSTRUCTED IN ACCORDANCE WITH THE STANDARD SPECIFICATIONS OF THE SPARTANBURG SANITARY SEWER DISTRICT DATED JUNE, 2009.
 2. CONTRACTOR TO VERIFY IN FIELD THAT ALL PROPOSED SSMH RIMS IN ASPHALT ARE FLUSH WITH SURFACE ROAD GRADE SHOWN ON DRAWINGS ARE APPROXIMATE AND ARE TO BE COORDINATED WITH GRADING PLAN AND FIELD CONDITIONS PRIOR TO FINAL PAVING.
 3. CONTRACTOR TO VERIFY IN FIELD ALL CROSS LYING PIPE INTERSECTIONS TO MAINTAIN AN 18" CLEARANCE.
 4. ALL PIPE SECTIONS WITH LESS THAN 3 FEET COVER WILL BE DUCTILE IRON PIPE SECTIONS. CENTERED ON THE LOW POINT AND SPANNED UNTIL 3 FEET COVER IS ACHIEVED.
 5. ALL PVC PIPE SHALL BE SDR-35 INSTALLED PER SSSD STANDARD SPECS AND MANUFACTURERS RECOMMENDATIONS.
 6. ALL MANHOLES SHALL BE PRECAST CONCRETE PER SSSD STANDARD SPECS AND SSSD STANDARD DETAILS.

ENGINEER:
MATRIX ENGINEERING, INC.
912 SOUTH PINE STREET
SPARTANBURG, SC 29302
TEL: 864-583-6274

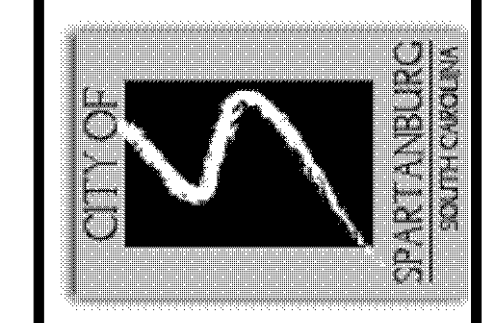
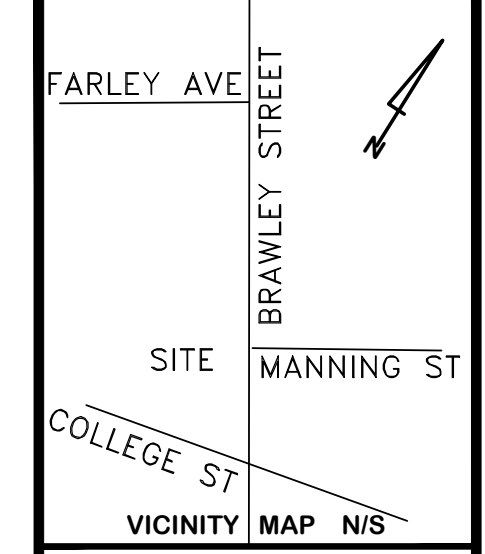
SURVEYOR:
SMITH LAVENDER AND ASSOCIATES INC.
2900 EAST MAIN STREET
SPARTANBURG, SC 29307

DISTURBED AREA:
0.14 ACRE

OWNER / DEVELOPER
CITY OF SPARTANBURG
PO BOX 1749
SPARTANBURG, S.C. 29304



6/2/17
Don A. Worley



MATRIX ENGINEERING, INC.
912 South Pine Street
Spartanburg, South Carolina 29302
(864)583-6274 d.worley@matrixei.com

PROJECT: CITY OF SPARTANBURG, SOUTH CAROLINA
NEW BRAWLEY STREET SEWER RELOCATION AND EXTENSION
SEWER SERVICE LINES
COUNTY GRID MAP # 7113

| | |
|-----------|-------------------------------|
| Engineer | Don Worley |
| Drawn By | Jonathan Stewart |
| Date | 03/29/17 |
| Revisions | |
| A | Issued for Review 4/10/17 |
| B | Issued for Review 4/12/17 |
| C | Issued for Permitting 5/18/17 |
| D | Issued for Permitting 5/28/17 |
| E | Issued for Permitting 6/02/17 |

S-2
Sheet
2 of 3

