

ADDENDUM NO. 2

ORANGE BEACH TRAIL MAINTENANCE SHOP AND WILDLIFE CENTER CITY OF ORANGE BEACH

ADDENDUM NO. TWO (2) – DATED March 4, 2022

This Addendum is directed to all bidders to whom the City of Orange Beach and Printing Pros has issued drawings and specifications. The following conditions, drawings, specification changes, etc., take precedence over any conflicting conditions in the Drawings and Specifications or other Contract and Bid Documents. Portions of the Contract Documents not changed by Addendum remain in effect.

SPECIFICATIONS

- ITEM 2.01 00 4100 BID PROPOSAL FORM (ATTACHED)**
Replace bid proposal form with the attached. Note Phase 2 has been deleted and the contingency has been adjusted for Phase 1.
- ITEM 2.02 08 3610 SECTIONAL OVERHEAD DOOR – (ATTACHED)**
This section has been replaced in its entirety with the attached new specification 08 3300.
- ITEM 2.03 10 2000 LOUVERS AND VENTS (FOR REFERENCE)**
Delete reference to the Vehicle Maintenance Building in this section.

DRAWINGS

- ITEM 2.04 DRAWING A2.1 – PHASE 1 (ATTACHED)**
Drawing has been revised to show window slider detail and specification information.
- ITEM 2.05 DRAWING A4.1 – PHASE 1 (ATTACHED)**
Drawing has been revised to reflect new window slider size per detail in A2.1.
- ITEM 2.06 DRAWING A1.1, A2.1 – PHASE 1 ALTERNATE 1 (ROOM FINISH SCHEDULE)**
Please note the Shop side of Mezzanine Wall and the Tool Room to receive 5/8" OSB.
- ITEM 2.07 DRAWING A4.4, A4.5 – PHASE 1 ALTERNATE 2 (ATTACHED)**
Drawing has been revised to show logos and/or sign elements removed from the entry structure. Please disregard the detail B/A5.2 call out. Power shall remain.
- ITEM 2.08 DRAWING E1.1, E1.2 (FOR REFERENCE)**
Provide power for breezeway fans. Fans equal to Big Air Industrial 96" fan.

NOTE: Receipt of all addenda must be acknowledged on the Bid Form in order for the proposal to be considered a conforming bid.



Stedmann B. McCollough
McCullough Architecture, Inc.

END OF ADDENDUM #2

PROPOSAL FORM (This is intended to be used for Phase 1 of this project.)

TO: **The City of Orange Beach**, Orange Beach, Alabama, hereinafter called the Owner
Date: _____

In compliance with the Invitation to Bid and subject to all the conditions thereof, the undersigned

(Legal Name of Bidder)
hereby proposes to furnish all labor and materials and perform all work required for the construction of
WORK: Orange Beach Trail Maintenance Shop and Wildlife Center

in accordance with Drawings and Specifications, dated _____, prepared by
McCollough Architecture, Architect/Engineer.

The Bidder, which is organized and existing under the laws of the State of _____,
having its principal offices in the City of _____,
is: a Corporation a Partnership an individual (other) _____.

LISTING OF PARTNERS OR OFFICERS: If Bidder is a Partnership, list all partners and their addresses; if
Bidder is a Corporation, list the names, titles, and business addresses of its officers:

BIDDER'S REPRESENTATION: The Bidder declares that it has examined the site of the Work, having become
fully informed regarding all pertinent conditions, and that it has examined the Drawings and Specifications
(including all Addenda received) for the Work and the other Bid and Contract Documents relative thereto,
and that it has satisfied itself relative to the Work to be performed.

ADDENDA: The Bidder acknowledges receipt of Addenda Nos. _____ through _____ inclusively.

BASE BID FOR PHASE 1: Refer to Phase 1 drawings and Specifications provided in Bid Documents. For
construction complete as shown and specified, the sum of

_____ Dollars (\$ _____)

ALLOWANCE NO. 1: Bidders shall include a \$30,000.00 contingency in their bid.

_____ Dollars (\$ _____)

TOTAL BID (including Base Bid for Phase 1 & Allowance):

_____ Dollars (\$ _____)

UNIT PRICE: Provide unit prices in accord with Section 01 2700 – Unit Price

Unit Price 1: Removal & Replacement of Unsuitable Soils per cubic yard.

\$ _____

Attach Section 004102 – Bid Proposal Form Attachment “A” to this Bid Proposal Form.

ALTERNATES: If alternates as set forth in the Bid Documents are accepted, the following adjustments are to be made to the Base Bid: Alternates are further described in Section 01 2300.

PHASE 1 ALTERNATE No. 1: Add Alternate 1 consists of a 2,368 s.f. complete interior fit-up of the trail shop space. This fit up includes interior walls, doors, millwork, fixtures, mechanical equipment, electrical, appliances and finishes throughout. Also, a 1,022 s.f. second floor or "mezzanine" will be part of this add alternate, including stairs and finishes. In general, this add alternate is meant to take the trail shop space from its state at the end of the base Phase 1 to a complete "turnkey" space, with all necessary trail shop systems in place and in new working order. Upon completion of this add Alternate 1 the trail shop side of the building is meant to be move in ready.

_____ Dollars (\$ _____)

PHASE 1 ALTERNATE No. 2: Add Alternate 2 consists of the construction, installation and finishing of entry elements as designated on these construction documents. In general, this includes an entry element, wood trellis, wood low wall, wood bench and a wood framed element at the rear of the breezeway. At the completion of Phase I and Alternate 1 & 2, all but the wildlife space is meant to be complete, and all systems installed and in new working order.

_____ Dollars (\$ _____)

BID SECURITY: The undersigned agrees to enter into a Construction Contract and furnish the prescribed Performance and Payment Bonds Alternates and evidence of insurance within fifteen calendar days, or such other period stated in the Bid Documents, after the contract forms have been presented for signature, provided such presentation is made within 30 calendar days after the opening of bids, or such other period stated in the Bid Documents. As security for this condition, the undersigned further agrees that the funds represented by the Bid Bond (or cashier’s check) attached hereto may be called and paid into the account of the Awarding Authority as liquidated damages for failure to so comply.

Attached hereto is a: (Mark the appropriate blank and provide the applicable information.)

_____ Bid Bond, executed by _____ as Surety,

_____ a cashier’s check on the _____ Bank of _____,
for the sum of _____ Dollars
(\$ _____) made payable to the Owner.

BIDDER’S ALABAMA LICENSE:

State License for General Contracting: _____
License Number Bid Limit Type(s) of Work

CERTIFICATIONS: The undersigned certifies that he or she is authorized to execute contracts on behalf of the Bidder as legally named, that this proposal is submitted in good faith without fraud or collusion with any other bidder, that the information indicated in this document is true and complete, and that the bid is made in full accord with State law. Notice of acceptance may be sent to the undersigned at the address set forth below.

The Bidder also declares that a list of all proposed major subcontractors and suppliers will be submitted at a time subsequent to the receipt of bids as established by the Architect in the Bid Documents but in no event shall this time exceed twenty-four (24) hours after receipt of bids.

Legal Name of Bidder _____

Mailing Address _____

*** By (Legal Signature)** _____

* Name (type or print) _____ (Seal)

* Title _____

Telephone Number _____

* If other than the individual proprietor, or an above-named member of the Partnership, or the above-named president, vice-president, or secretary of the Corporation, attach written authority to bind the Bidder. Any modification to a bid shall be over the initials of the person signing the bid, or of an authorized representative.

- END OF PROPOSAL FORM -

SECTION 08 3300

ROLLING SERVICE DOORS

PART 1 GENERAL

1.1 SECTION INCLUDES

- A. Rolling service doors.

1.2 RELATED SECTIONS

- A. Section 05500 - Metal Fabrications: Support framing and framed opening.
- B. Section 06200 - Finish Carpentry: Wood jamb and head trim.
- C. Section 08333 - Security Grilles.
- D. Section 08710 - Door Hardware: Product Requirements for cylinder core and keys.
- E. Section 09900 - Painting: Field applied finish.
- F. Section 16130 - Raceway and Boxes: Conduit from electric circuit to door operator and from door operator to control station.
- G. Section 16150 - Wiring Connections: Power to disconnect.

1.3 REFERENCES

- A. ANSI/DASMA 108 - American National Standards Institute Standard Method For Testing Sectional Garage Doors And Rolling Doors: Determination Of Structural Performance Under Uniform Static Air Pressure Difference.
- B. NFRC 102 - Test Procedure for Measuring the Steady-State Thermal Transmittance of Fenestration Systems.
- C. ASTM E 90 - Standard Test Method for Laboratory Measurement of Airborne Sound Transmission Loss of Building Partitions and Element.
- D. ASTM E 330 - Standard Test Method for Structural Performance of Exterior Windows, Doors, Skylights and Curtain Walls by Uniform Static Air Pressure Difference.
- E. ASTM A 653 - Standard Specification for Steel Sheet, Zinc-Coated (Galvanized) or Zinc-Iron Alloy-Coated (Galvannealed) by the Hot-Dip Process.

- F. ASTM A 666 - Standard Specification for Austenitic Stainless Steel Sheet, Strip, Plate, and Flat Bar.
- G. ASTM A 924 - Standard Specification for General Requirements for Steel Sheet, Metallic-Coated by the Hot-Dip Process.
- H. ASTM B 221 - Standard Specification for Aluminum and Aluminum-Alloy Extruded Bars, Rods, Wire, Profiles, and Tubes.
- I. NEMA 250 - Enclosures for Electrical Equipment (1000 Volts Maximum).
- J. NEMA MG 1 - Motors and Generators.

1.4 DESIGN / PERFORMANCE REQUIREMENTS

- A. Single-Source Responsibility: Provide doors, tracks, motors, and accessories from one manufacturer for each type of door. Provide secondary components from source acceptable to manufacturer of primary components.
- B. Products Requiring Electrical Connection: Listed and classified by Underwriters Laboratories, Inc. acceptable to authority having jurisdiction as suitable for purpose specified.

1.5 SUBMITTALS

- A. Submit under provisions of Section 01300.
- B. Product Data: Manufacturer's data sheets on each product to be used, including:
 - 1. Preparation instructions and recommendations.
 - 2. Storage and handling requirements and recommendations.
 - 3. Details of construction and fabrication.
 - 4. Installation instructions.
- C. Shop Drawings: Include detailed plans, elevations, details of framing members, anchoring methods, required clearances, hardware, and accessories. Include relationship with adjacent construction.
- D. Selection Samples: For each finish product specified, two complete sets of color chips representing manufacturer's full range of available colors and patterns.
- E. Verification Samples: For each finish product specified, two samples, minimum size 6 inches (150 mm) long, representing actual product, color, and patterns.
- F. Manufacturer's Certificates: Certify products meet or exceed specified requirements.
- G. Operation and Maintenance Data: Submit lubrication requirements and frequency, and periodic adjustments required.

1.6 QUALITY ASSURANCE

- A. Manufacturer Qualifications: Company specializing in performing Work of this section with a minimum of five years experience in the fabrication and installation of security closures.
- B. Installer Qualifications: Installer Qualifications: Company specializing in performing Work of this section with minimum three years and approved by manufacturer.
- C. Mock-Up: Provide a mock-up for evaluation of surface preparation techniques and application workmanship.
 - 1. Finish areas designated by Architect.
 - 2. Do not proceed with remaining work until workmanship, color, and sheen are approved by Architect.
 - 3. Refinish mock-up area as required to produce acceptable work.

1.7 DELIVERY, STORAGE, AND HANDLING

- A. Store products in manufacturer's unopened packaging until ready for installation.
- B. Protect materials from exposure to moisture. Do not deliver until after wet work is complete and dry.
- C. Store materials in a dry, warm, ventilated weathertight location.

1.8 PROJECT CONDITIONS

- A. Maintain environmental conditions (temperature, humidity, and ventilation) within limits recommended by manufacturer for optimum results. Do not install products under environmental conditions outside manufacturer's absolute limits.

1.9 COORDINATION

- A. Coordinate Work with other operations and installation of adjacent materials to avoid damage to installed materials.

1.10 WARRANTY

- A. Warranty: Manufacturer's limited door and operator system, except the counterbalance spring and finish, to be free from defects in materials and workmanship for 3 years or 20,000 cycles, whichever occurs first.
- B. Warranty: Manufacturer's limited door system warranty for 2 years for all parts and components.
- C. PowderGuard Finish
 - 1. PowderGuard Premium Applied to curtain, guides, bottom bar, headplates: Manufacturer's limited Premium Finish warranty for 2 years.

2. PowderGuard Zinc Base Coat applied to guides, bottom bar, headplates plus PowderGuard Premium applied to curtain and top coat for guides, bottom bar, headplates: Manufacturer's limited Zinc Finish warranty for 4 years.
3. PowderGuard Textured: Applied to curtain, guides, bottom bar, headplates: Manufacturer's limited Textured Finish warranty for 3 years.
4. PowderGuard Zinc Base Coat applied to guides, bottom bar, headplates plus PowderGuard Textured applied to curtain and top coat for guides, bottom bar, headplates: Manufacturer's limited Zinc Finish warranty for 4 years.
5. PowderGuard Max: Applied to curtain, guides, bottom bar, headplates: Manufacturer's limited Max Finish warranty for 5 years.

PART 2 PRODUCTS

2.1 MANUFACTURERS

- A. Acceptable Manufacturer: Overhead Door Corporation, 2501 S. State Hwy. 121, Suite 200, Lewisville, TX 75067. ASD. Tel. Toll Free: (800) 275-3290. Phone: (469) 549-7100. Fax: (972) 906-1499. Web Site: www.overheaddoor.com. E-mail: info@overheaddoor.com.
- B. Requests for substitutions will be considered in accordance with provisions of Section 01600.

2.2 ROLLING SERVICE DOORS

- A. Heavy Duty Industrial Doors: Overhead Door Corporation, Model 620 Stormtite Rolling Service Doors.
 1. Curtain: Interlocking roll-formed slats as specified following. Endlocks shall be attached to each end of alternate slats to prevent lateral movement.
 - a. Flat profile type F-265 for doors up to 18 feet 4 inches (5.59 m) wide, fabricated of:
 - 1) 20 gauge galvanized steel.
 2. Slats and Hood Finish:
 - a. Galvanized Steel: Slats and hood galvanized in accordance with ASTM A 653 and receive rust-inhibitive, roll coating process, including 0.2 mils thick baked-on prime paint, and 0.6 mils thick baked-on polyester top coat.
 - 1) Polyester Top Coat.
 - (a) Tan polyester.
 3. Weatherseals:
 - a. Vinyl bottom seal, exterior guide and internal hood seals.
 - b. Interior guide weatherseal.
 4. Bottom Bar:
 - a. Double angle steel primed or powdercoated
 5. Guides: Three structural steel angles. Face mount.
 6. Brackets:

- a. Hot rolled prime painted steel to support counterbalance, curtain and hood.
7. Finish; Bottom Bar, Guides, Headplate and Brackets:
 - a. PowderGuard Premium powder coat in black color.
8. Counterbalance: Helical torsion spring type housed in a steel tube or pipe barrel, supporting the curtain with deflection limited to 0.03 inch per foot of span. Counterbalance is adjustable by means of an adjusting tension wheel.
9. Hood: Provide with internal hood baffle weatherseal.
 - a. 24 gauge galvanized steel with intermediate supports as required.
10. Manual Operation:
 - a. Chain hoist for doors over 96 SF.
11. Electric Motor Operation: Provide UL listed electric operator, size as recommended by manufacturer to move door in either direction at not less than 2/3 foot nor more than 1 foot per second.
 - a. Sensing Edge Protection:
 - 1) Electric sensing edge
 - b. Operator Controls:
 - 1) Push-button operated control stations with open, close, and stop buttons.
 - c. Motor Voltage: 115/230 single phase, 60 Hz.
12. Wind Load Design:
 - a. 50 PSF (Large Missile Impact Rated).
13. Operation: Design door assembly, including operator, to operate for not less than 20,000 cycles.
14. Locking:
 - a. Cylinder lock for electric operation with interlock switch.
15. Wall Mounting Condition:
 - a. Face-of-wall mounting.

PART 3 EXECUTION

3.1 EXAMINATION

- A. Verify opening sizes, tolerances and conditions are acceptable.
- B. Examine conditions of substrates, supports, and other conditions under which this work is to be performed.
- C. If substrate preparation is the responsibility of another installer, notify Architect of unsatisfactory preparation before proceeding.

3.2 PREPARATION

- A. Clean surfaces thoroughly prior to installation.

- B. Prepare surfaces using the methods recommended by the manufacturer for achieving the best result for the substrate under the project conditions.

3.3 INSTALLATION

- A. Install in accordance with manufacturer's instructions.
- B. Use anchorage devices to securely fasten assembly to wall construction and building framing without distortion or stress.
- C. Securely and rigidly brace components suspended from structure. Secure guides to structural members only.
- D. Fit and align assembly including hardware; level and plumb, to provide smooth operation.
- E. Coordinate installation of electrical service with Section 16150. Complete wiring from disconnect to unit components.
- F. Coordinate installation of sealants and backing materials at frame perimeter as specified in Section 07900.
- G. Install perimeter trim and closures.
- H. Instruct Owner's personnel in proper operating procedures and maintenance schedule.

3.4 ADJUSTING

- A. Test for proper operation and adjust as necessary to provide proper operation without binding or distortion.
- B. Adjust hardware and operating assemblies for smooth and noiseless operation.

3.5 CLEANING

- A. Clean curtain and components using non-abrasive materials and methods recommended by manufacturer.
- B. Remove labels and visible markings.
- C. Touch-up, repair or replace damaged products before Substantial Completion.

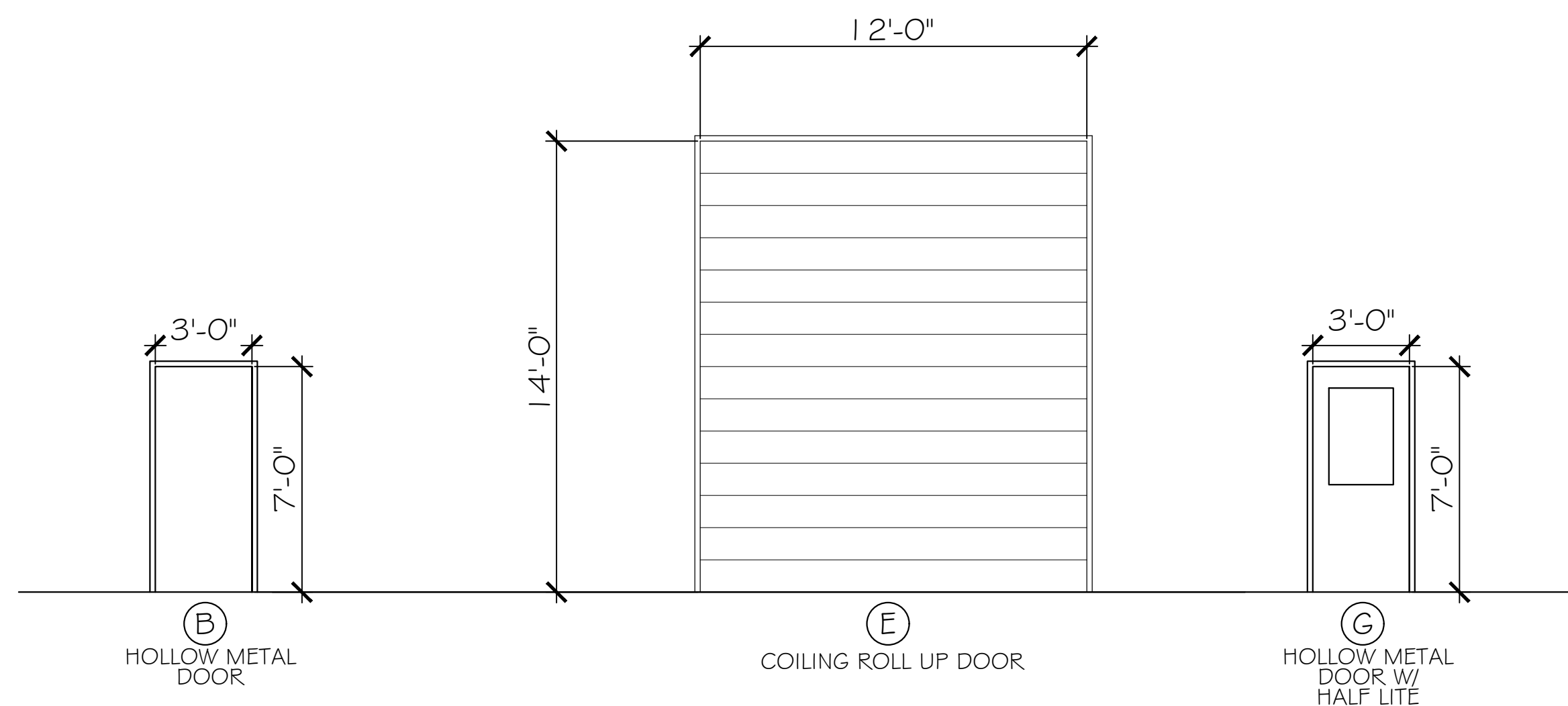
3.6 PROTECTION

- A. Protect installed products until completion of project.

END OF SECTION

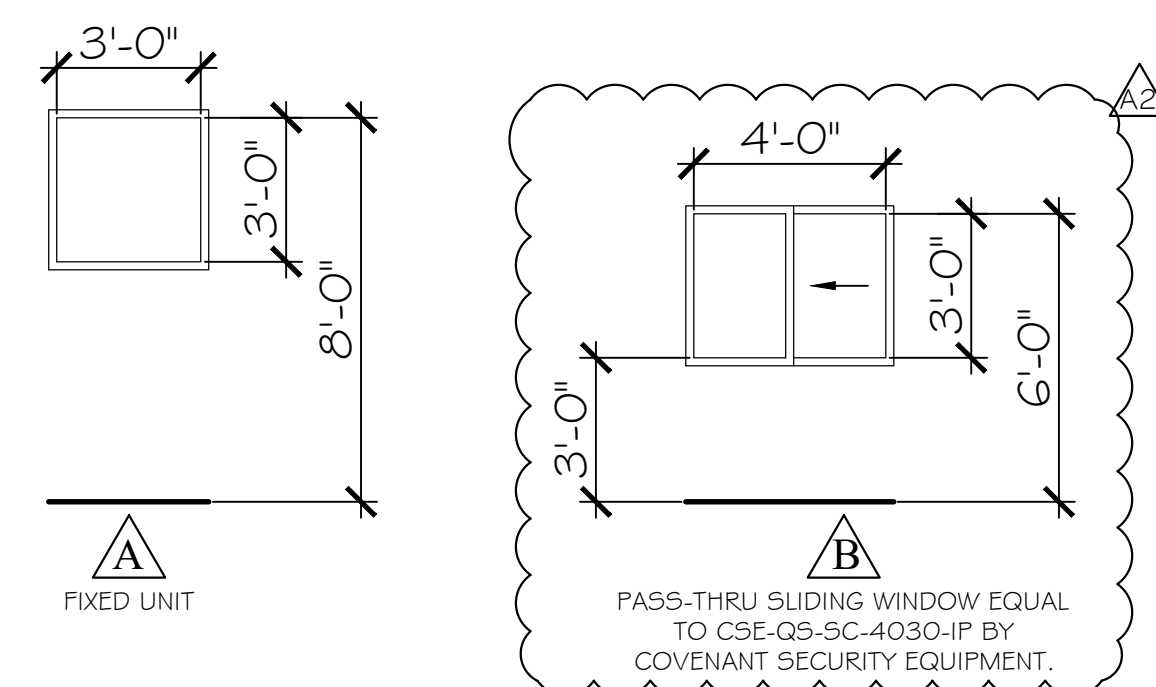


DOOR SCHEDULE											
DOOR NO.	DOOR SIZE	DOOR TYPE	DOOR MATERIAL	DOOR LOCATION	DOOR FINISH	FRAME TYPE	FRAME FINISH	RATING	PANIC HDWE	DOOR CLOSURE	REMARKS
104A	3'-0" X 7'-0"	G	METAL	EXTERIOR	PAINT	METAL	PAINT	-	-	-	
107A	3'-0" X 7'-0"	B	METAL	EXTERIOR	PAINT	METAL	PAINT	-	-	-	
108A	3'-0" X 7'-0"	B	METAL	EXTERIOR	PAINT	METAL	PAINT	-	-	-	CLOSER BY DOOR MANUF.
110A	12'-0" X 14'-0"	E	METAL	EXTERIOR	-	-	-	-	-	-	COILING ROLL UP DOOR; FINISHES BY MANF.
110B	3'-0" X 7'-0"	B	METAL	EXTERIOR	PAINT	METAL	PAINT	-	-	-	
119A	3'-0" X 7'-0"	G	METAL	EXTERIOR	PAINT	METAL	PAINT	-	-	-	HOLLOW METAL DOOR W/ HALF LITE
119B	3'-0" X 7'-0"	B	METAL	EXTERIOR	PAINT	METAL	PAINT	-	-	-	FRAME IN ONLY, DOOR INSTALL DURING PHASE II, LEAVE EXTERIOR METAL WALL PANEL INTACT
120A	3'-0" X 7'-0"	B	METAL	EXTERIOR	PAINT	METAL	PAINT	-	-	-	
121A	3'-0" X 7'-0"	B	METAL	EXTERIOR	PAINT	METAL	PAINT	-	-	-	
202A	3'-0" X 7'-0"	B	METAL	EXTERIOR	PAINT	METAL	PAINT	-	-	-	FRAME IN ONLY, DOOR INSTALL DURING PHASE II, LEAVE EXTERIOR METAL WALL PANEL INTACT



DOOR FRAME / TYPES

SCALE: 1/4"=1'-0"



ALL WINDOW UNITS SHALL BE ALUMINUM STOREFRONT AND LARGE MISSILE IMPACT RESISTANT

WINDOW / TYPES

SCALE: 1/4"=1'-0"

ROOM FINISH SCHEDULE							
ROOM NAME	FLOOR		WALLS		CEILING		REMARKS
	FLOORS	BASE	MATERIALS	FINISH	MATERIAL	FINISH	
101 BREEZEWAY	SEALED CONCRETE	EXPOSED METAL BUILDING	EXPOSED METAL BUILDING	EXPOSED METAL BUILDING	EXPOSED METAL BUILDING	EXPOSED METAL BUILDING	
102 OFFICE							
103 OFFICE							
104 HALL							
105 BREAKROOM							
106 BATH							
107 STORAGE							
108 BATH							
109 TOOLS							
110 SHOP							
111 OFFICE							
112 OFFICE							
113 INTERN							
114 ELECTRICAL							
115 REHAB #2							
116 REHAB #1							
117 STORAGE							
118 KITCHEN / PREP.							
119 CORRIDOR							
120 ISOLATION							
121 STORAGE							
122 TRIAGE							
123 REHAB #3							
124 EMPLOYEE BATH							
125 JANITOR							
126 STORAGE							
127 STORAGE							
128 TREATMENT							
129 LAB							
130 LAUNDRY							
201 STORAGE	NONE						
202 STORAGE	NONE						

PHASE 1 DRAWINGS FOR
ORANGE BEACH
TRAIL SHOP / WILDLIFE CENTER
ORANGE BEACH
ALABAMA

JOB NO.: 21-05
DRAWN: CLT
CHECKED: SBM
DATE: 2021.06.01
REVISION:
ADDENDUM 2 2022.03.04

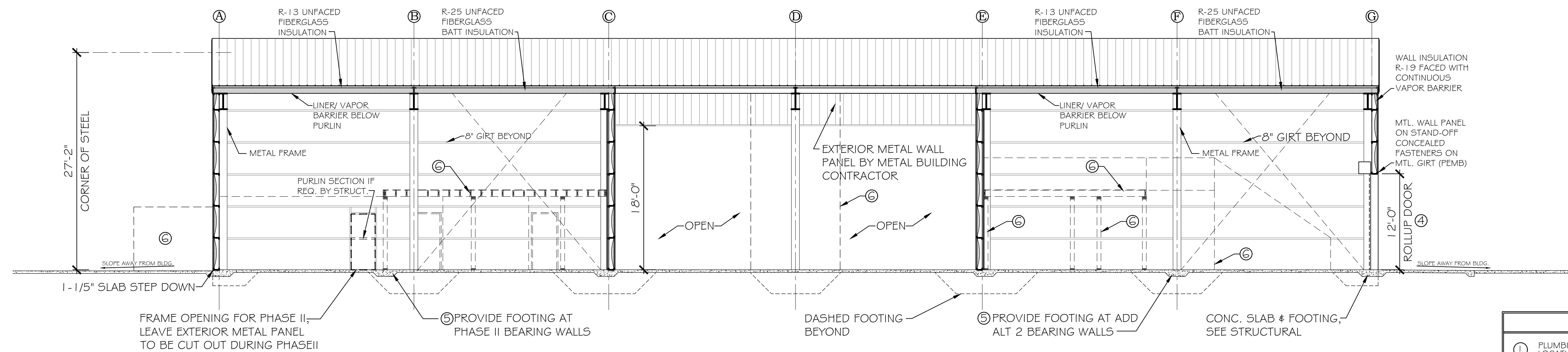
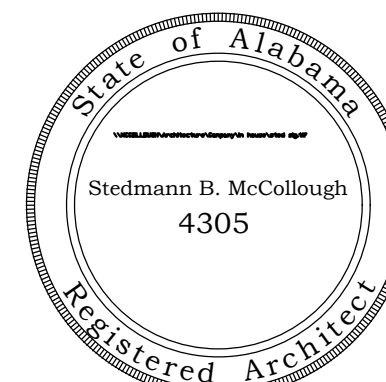
SCALE: 1/4"=1'-0"

SHEET NO.:

A2.1

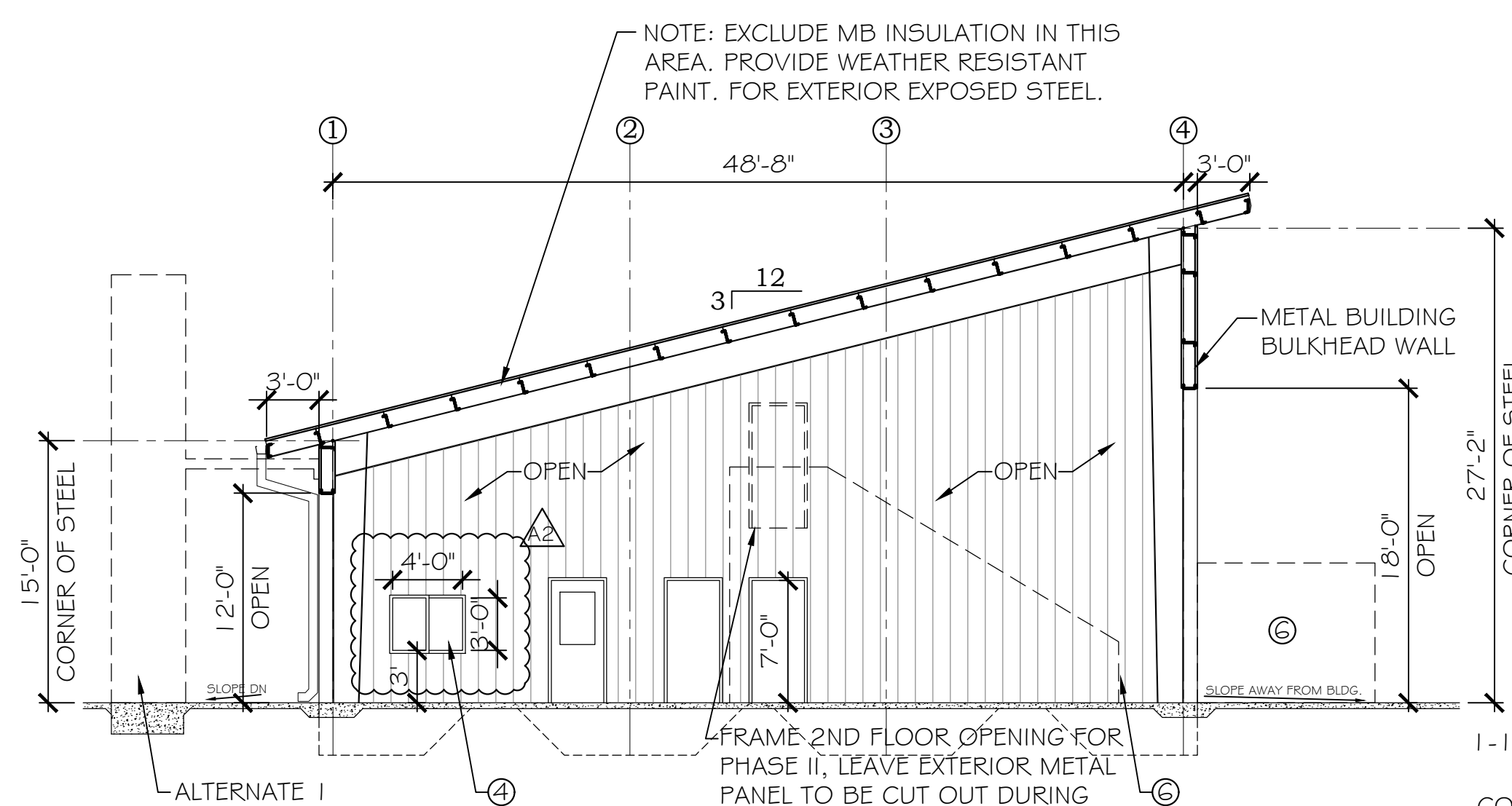
SCHEDULES AND DETAILS
PHASE I

PHASE I

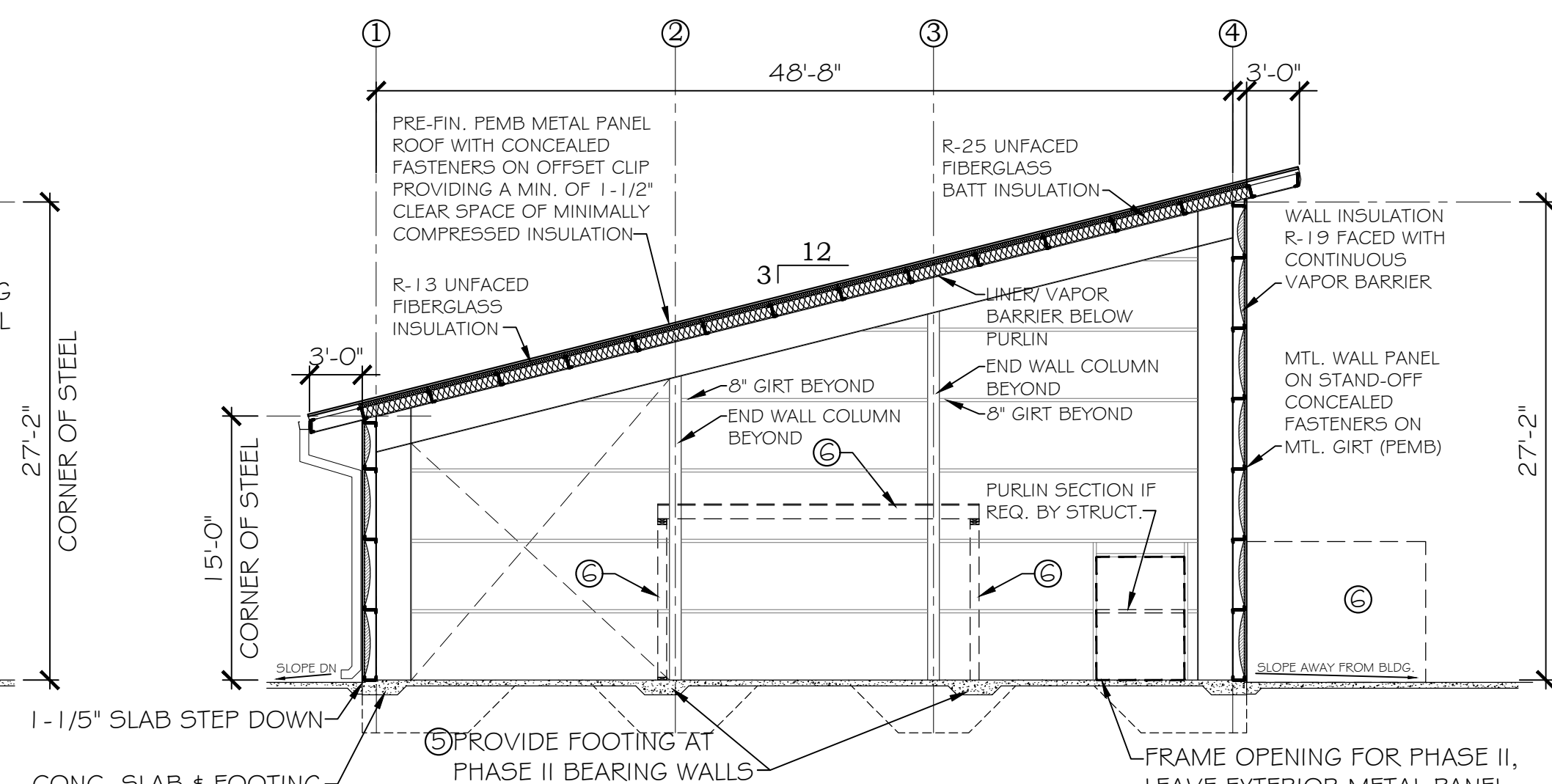


A BUILDING SECTION
SCALE: 1/8"=1'-0"

- PHASE I NOTES**
- ① PLUMBING CONTRACTOR WILL COORDINATE ALL STUB UP LOCATIONS AS REQUIRED.
 - ② ELECTRICAL CONTRACTOR WILL COORDINATE ALL CONDUIT STUB UP LOCATIONS AS REQUIRED.
 - ③ METAL BUILDING CONTRACTOR WILL PROVIDE SIMPLE SAVER INSULATION @ ENTIRE PERIMETER PURLIN CAVITY AND ROOF PURLINS EXCEPT WHERE OMITTED AT BREEZEWAY AREA.
 - ④ METAL BUILDING CONTRACTOR SHALL VERIFY AND PROVIDE ALL DOOR AND WINDOW ROUGH OPENINGS AS REQUIRED.
 - ⑤ PROVIDE THICKENED SLAB AT ALL LOAD BEARING WALLS AS REQUIRED. REFER TO STRUCTURAL FOUNDATION PLAN FOR REQUIREMENTS.
 - ⑥ COORDINATE AS REQUIRED ALL PHASE I ADD ALT. AND PHASE II CONDITIONS AND PREP AS REQUIRED.



B BUILDING SECTION
SCALE: 1/8"=1'-0"



C BUILDING SECTION
SCALE: 1/8"=1'-0"

PHASE I DRAWINGS FOR
ORANGE BEACH
TRAIL SHOP / WILDLIFE CENTER
 ORANGE BEACH ALABAMA

JOB NO.:	21-05
DRAWN:	CLT
CHECKED:	SBM
DATE:	2021.06.01
REVISION:	
ADDENDUM 2 2022.03.04	

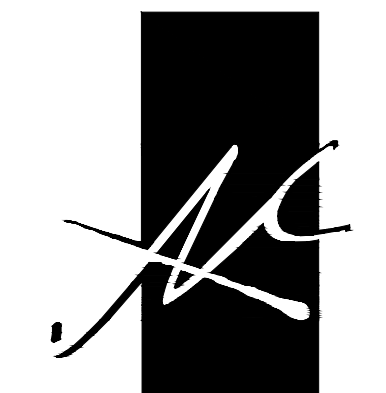
SCALE: 1/8" = 1'-0"

SHEET NO.:

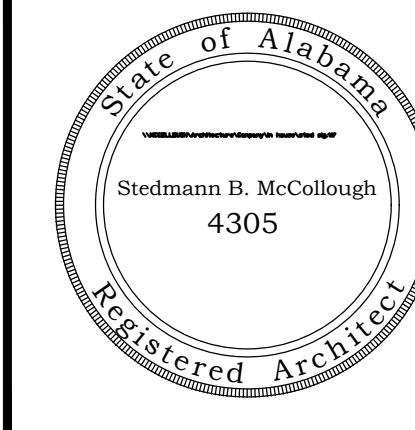
A4.1

PHASE I BUILDING SECTIONS

PHASE I



McCOLLOUGH ARCHITECTURE, INC.
P.O. BOX 6310
GULF SHORES, ALABAMA 36547-6310
PHONE: 251-968-7222



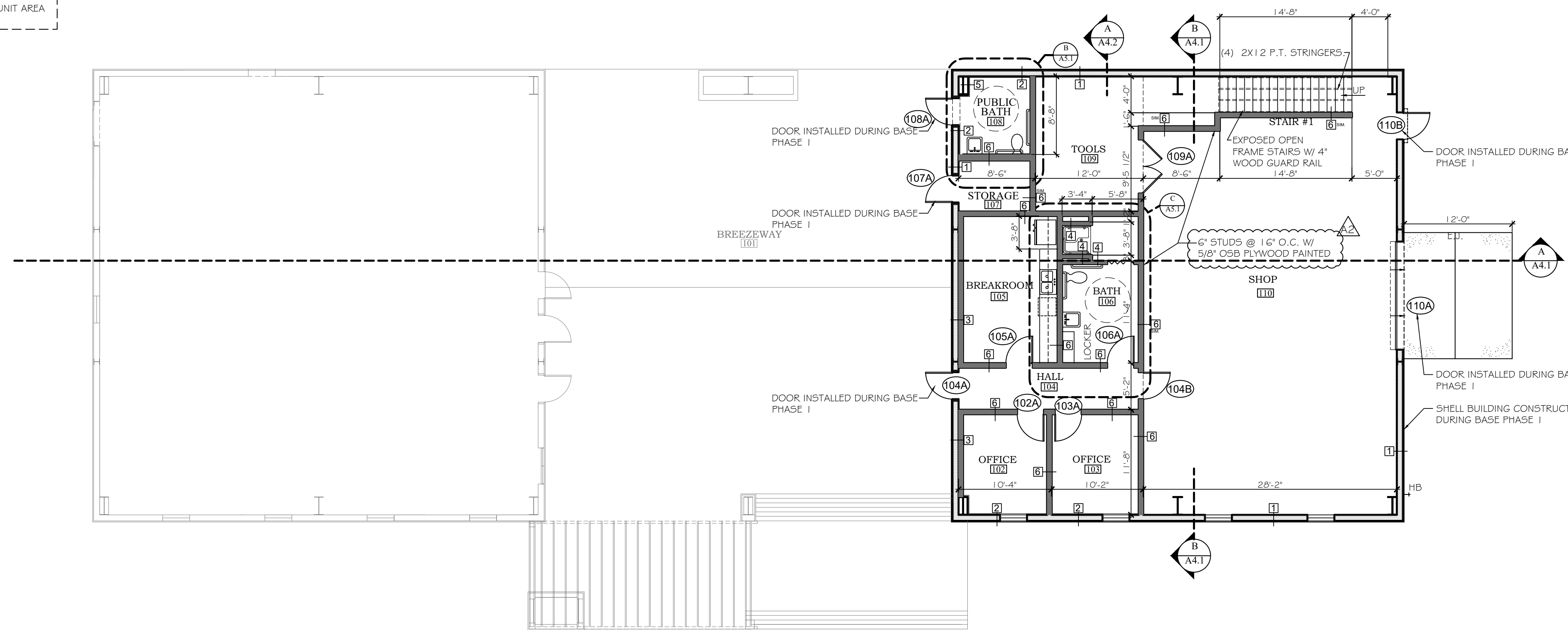
PHASE I DRAWINGS FOR
ORANGE BEACH
WILDLIFE CENTER
ORANGE BEACH
ALABAMA

JOB NO.: 21-05
DRAWN: CLT
CHECKED: SBM
DATE: 2021.06.01
REVISION:
ADDENDUM 2 2022.03.04

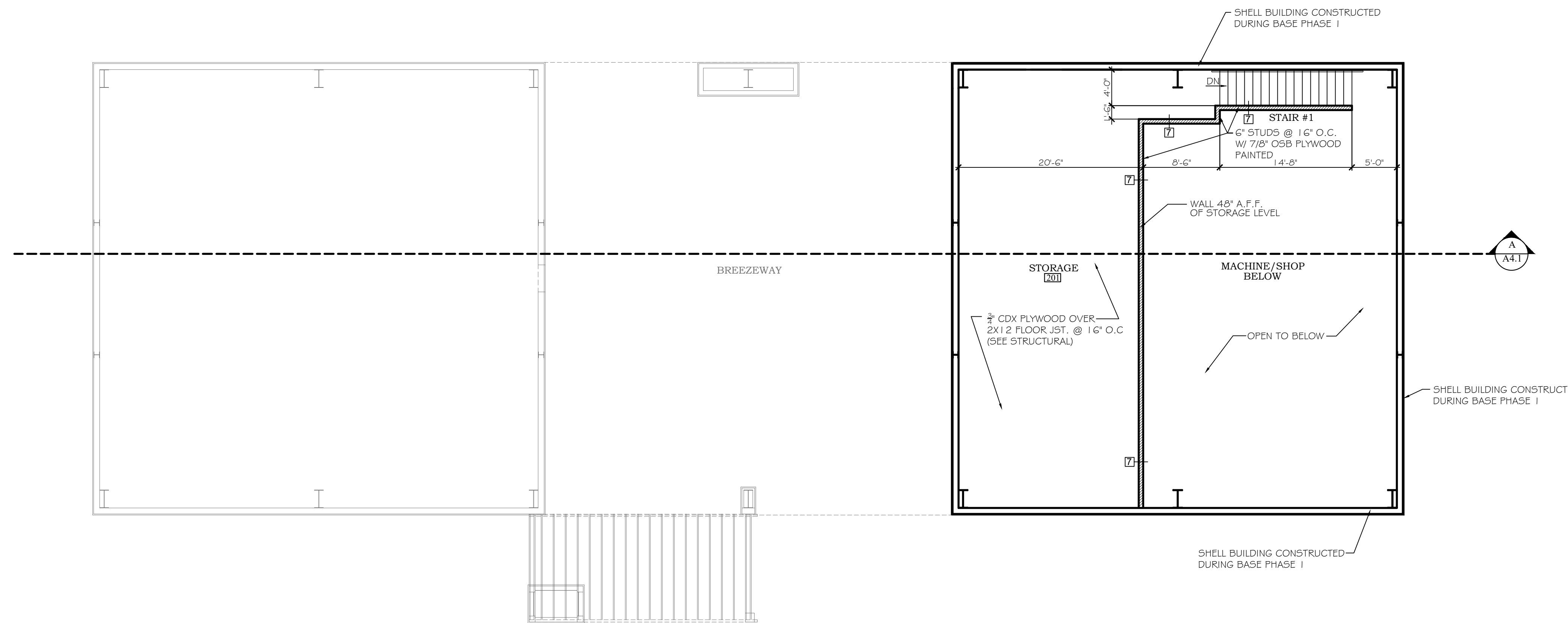
SCALE: 1/8" = 1'-0"

SHEET NO.:
ALT 1
A1.1
FLOOR PLANS

COND. UNIT AREA



FIRST FLOOR PLAN
SCALE: 1/8"=1'-0"



SECOND FLOOR PLAN
SCALE: 1/8"=1'-0"

GENERAL NOTE
ALL GREYED OUT ITEMS ARE PART OF BASE PHASE I OR ADD ALTERNATE 2, NOT THIS ADD ALTERNATE 1

NOTE: ALL INTERIOR WALLS TO RECEIVE BATT INSULATION. 2X4 WALLS TO RECEIVE R-13, 2X6 WALLS TO RECEIVE R-19.

WALL TYPES	
1	EXTERIOR METAL BUILDING WALL WITH 1/2" METAL WALL PANEL, 8" STEEL PURLINS AND SIMPLE SAVER INSULATION (CONSTRUCTED DURING PHASE I)
2	EXTERIOR METAL BUILDING WALL WITH 1/2" METAL WALL PANEL, 8" STEEL PURLINS AND SIMPLE SAVER INSULATION. PROVIDE 2" METAL STUDS @ 16" O.C. AT INSIDE WALL WITH 3/8" GYP. BD. PAINTED
3	EXTERIOR METAL BUILDING WALL WITH 1/2" METAL WALL PANEL, 8" STEEL PURLINS AND SIMPLE SAVER INSULATION. PROVIDE 2X6" WOOD STUDS @ 16" O.C. AT INSIDE WALL WITH 3/8" GYP. BD. PAINTED. PROVIDE DOUBLE TOP PLATE AND PRESSURE TREATED BOTTOM PLATE (SEE STRUCTURAL)
4	INTERIOR WALL PROVIDE 2X4" WOOD STUDS @ 16" O.C. WITH 3/8" GYP. BD. PAINTED EACH SIDE. PROVIDE DOUBLE TOP PLATE AND PRESSURE TREATED BOTTOM PLATE (SEE STRUCTURAL)
5	PROVIDE 2" METAL STUDS @ 16" O.C. WITH 3/8" GYP. BD. PAINTED
6	INTERIOR WALL PROVIDE 2X6" WOOD STUDS @ 16" O.C. WITH 3/8" GYP. BD. PAINTED EACH SIDE. PROVIDE DOUBLE TOP PLATE AND PRESSURE TREATED BOTTOM PLATE (SEE STRUCTURAL)
7	WALL 48" A.F.F. OF STORAGE LEVEL 6" STUDS @ 16" O.C. W/ 7/8" OSB PLYWOOD PAINTED PROVIDE 1X6" FIR TOP CAP AND 1X2" FIR CASING
8	SHIP LAP SIDING OVER INSULATION AND STICK (CEILING) OVER INSULATION PROVIDE 1X6" WOOD ON WOOD CONSTRUCTED AT ALTERNATE 2 @ 16" O.C.

PHASE I ADD ALTERNATE 1

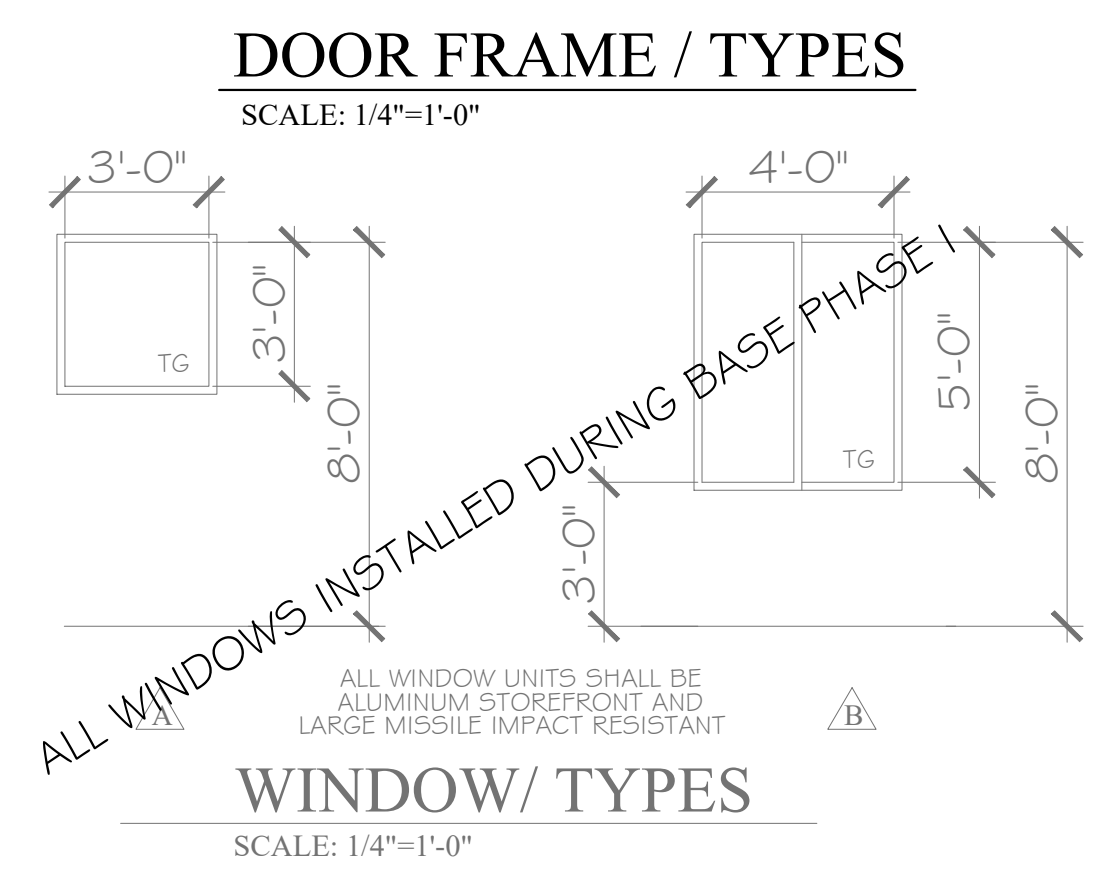
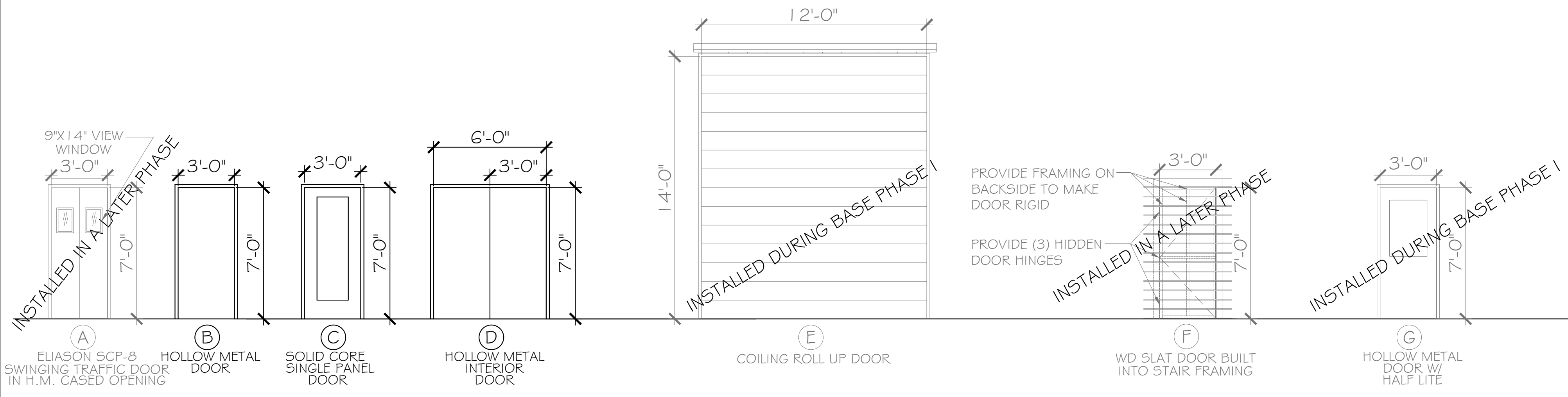
DOOR SCHEDULE											
DOOR NO.	DOOR SIZE	DOOR TYPE	DOOR MATERIAL	DOOR LOCATION	DOOR FINISH	FRAME TYPE	FRAME FINISH	RATING	PANIC HDWE	DOOR CLOSURE	REMARKS
101A	3'-0" X 7'-0"	F	WOOD	EXTERIOR	STAIN	WOOD	STAIN	-	-	-	INSTALLED DURING A LATER PHASE
102A	3'-0" X 7'-0"	C	WOOD	INTERIOR	PAINT	METAL	PAINT	-	-	-	
103A	3'-0" X 7'-0"	C	WOOD	INTERIOR	PAINT	METAL	PAINT	-	-	-	
104A	3'-0" X 7'-0"	G	METAL	EXTERIOR	PAINT	METAL	PAINT	-	-	-	INSTALLED DURING BASE PHASE I
104B	3'-0" X 7'-0"	B	METAL	INTERIOR	PAINT	METAL	PAINT	-	-	-	
105A	3'-0" X 7'-0"	C	WOOD	INTERIOR	PAINT	METAL	PAINT	-	-	-	
106A	3'-0" X 7'-0"	C	WOOD	INTERIOR	PAINT	METAL	PAINT	-	-	-	** CLOSER BY DOOR MANF.
107A	3'-0" X 7'-0"	B	METAL	EXTERIOR	PAINT	METAL	PAINT	-	-	-	INSTALLED DURING BASE PHASE I
108A	3'-0" X 7'-0"	B	METAL	EXTERIOR	PAINT	METAL	PAINT	-	-	-	INSTALLED DURING BASE PHASE I
109A	PR 3'-0" X 7'-0"	D	METAL	INTERIOR	PAINT	METAL	PAINT	-	-	-	
110A	12'-0" X 14'-0"	E	METAL	EXTERIOR	-	-	-	-	-	-	INSTALLED DURING BASE PHASE I
110B	3'-0" X 7'-0"	B	METAL	EXTERIOR	PAINT	METAL	PAINT	-	-	-	INSTALLED DURING BASE PHASE I
111A	3'-0" X 7'-0"	C	WOOD	INTERIOR	PAINT	METAL	PAINT	-	-	-	INSTALLED DURING A LATER PHASE
112A	3'-0" X 7'-0"	C	WOOD	INTERIOR	PAINT	METAL	PAINT	-	-	-	INSTALLED DURING A LATER PHASE
113A	3'-0" X 7'-0"	C	WOOD	INTERIOR	PAINT	METAL	PAINT	-	-	-	INSTALLED DURING A LATER PHASE
114A	3'-0" X 7'-0"	C	WOOD	INTERIOR	PAINT	METAL	PAINT	-	-	-	INSTALLED DURING A LATER PHASE
115A	3'-0" X 7'-0"	C	WOOD	INTERIOR	PAINT	METAL	PAINT	-	-	-	INSTALLED DURING A LATER PHASE
116A	3'-0" X 7'-0"	C	WOOD	INTERIOR	PAINT	METAL	PAINT	-	-	-	INSTALLED DURING A LATER PHASE
118A	PR 1'-6" X 7'-0"	A	WD. W/ LAM	INTERIOR	-	METAL	PAINT	-	-	-	INSTALLED DURING A LATER PHASE
119A	3'-0" X 7'-0"	G	METAL	EXTERIOR	PAINT	METAL	PAINT	-	-	-	INSTALLED DURING BASE PHASE I
119B	3'-0" X 7'-0"	B	METAL	EXTERIOR	PAINT	METAL	PAINT	-	-	-	INSTALLED DURING BASE PHASE I
120A	3'-0" X 7'-0"	B	METAL	EXTERIOR	PAINT	METAL	PAINT	-	-	-	INSTALLED DURING BASE PHASE I
120B	3'-0" X 7'-0"	C	WOOD	INTERIOR	PAINT	METAL	PAINT	-	-	-	INSTALLED DURING A LATER PHASE
121A	3'-0" X 7'-0"	B	METAL	EXTERIOR	PAINT	METAL	PAINT	-	-	-	INSTALLED DURING BASE PHASE I
122A	3'-0" X 7'-0"	C	WOOD	INTERIOR	PAINT	METAL	PAINT	-	-	-	INSTALLED DURING A LATER PHASE
123A	3'-0" X 7'-0"	C	WOOD	INTERIOR	PAINT	METAL	PAINT	-	-	-	INSTALLED DURING A LATER PHASE
124A	3'-0" X 7'-0"	C	WOOD	INTERIOR	PAINT	METAL	PAINT	-	-	-	INSTALLED DURING A LATER PHASE
125A	3'-0" X 7'-0"	C	WOOD	INTERIOR	PAINT	METAL	PAINT	-	-	-	INSTALLED DURING A LATER PHASE
126A	3'-0" X 7'-0"	C	WOOD	INTERIOR	PAINT	METAL	PAINT	-	-	-	INSTALLED DURING A LATER PHASE
127A	3'-0" X 7'-0"	C	WOOD	INTERIOR	PAINT	METAL	PAINT	-	-	-	INSTALLED DURING A LATER PHASE
128A	PR 1'-6" X 7'-0"	A	WD. W/ LAM	INTERIOR	-	METAL	PAINT	-	-	-	INSTALLED DURING A LATER PHASE
128B	PR 1'-6" X 7'-0"	A	WD. W/ LAM	INTERIOR	-	METAL	PAINT	-	-	-	INSTALLED DURING A LATER PHASE
129A	3'-0" X 7'-0"	C	WOOD	INTERIOR	PAINT	METAL	PAINT	-	-	-	INSTALLED DURING A LATER PHASE
130A	3'-0" X 7'-0"	C	WOOD	INTERIOR	PAINT	METAL	PAINT	-	-	-	INSTALLED DURING A LATER PHASE
202A	3'-0" X 7'-0"	B	METAL	EXTERIOR	PAINT	METAL	PAINT	-	-	-	INSTALLED DURING A LATER PHASE

NOTES: PROVIDE PULL AND PUSH PLATES, KICK PLATES AND CLOSER

ROOM FINISH SCHEDULE							
ROOM NAME	FLOOR		WALLS		CEILING		REMARKS
	FLOORS	BASE	MATERIALS	FINISH	MATERIAL	FINISH	
101 BREEZEWAY	SEALED CONCRETE	EXPOSED METAL BUILDING	METAL PANEL SIDING	-	EXPOSED METAL BUILDING	EXPOSED METAL BUILDING	COMPLETED DURING BASE PHASE I
102 OFFICE	VCT	6" VINYL	GYP. BD	PAINT	GYP. BD.	-	
103 OFFICE	VCT	6" VINYL	GYP. BD	PAINT	GYP. BD.	-	
104 HALL	VCT	6" VINYL	GYP. BD	PAINT	GYP. BD.	-	
105 BREAKROOM	VCT	6" VINYL	GYP. BD	PAINT	GYP. BD.	-	
106 BATH	VCT	6" VINYL	MOISTURE RESISTANT GYP. BD	PAINT	GYP. BD.	-	
107 STORAGE	VCT	6" VINYL	GYP. BD	PAINT	GYP. BD.	-	
108 BATH	VCT	6" VINYL	MOISTURE RESISTANT GYP. BD	PAINT	GYP. BD.	-	
109 TOOLS	SEALED CONCRETE	EXPOSED METAL BUILDING	PLYWOOD WALLS	EXPOSED METAL BUILDING	GYP. BD.	-	
110 SHOP	SEALED CONCRETE	EXPOSED METAL BUILDING	PLYWOOD AT MEZZ. WALL / METAL BUILDING	EXPOSED METAL BUILDING	EXPOSED METAL BUILDING	-	
111 OFFICE	VCT	6" VINYL	GYP. BD	PAINT	LAY IN CEILING	-	COMPLETED DURING A LATER PHASE
112 OFFICE	VCT	6" VINYL	GYP. BD	PAINT	LAY IN CEILING	-	COMPLETED DURING A LATER PHASE
113 INTERN	VCT	6" VINYL	GYP. BD	PAINT	LAY IN CEILING	-	COMPLETED DURING A LATER PHASE
114 ELECTRICAL	SEALED CONCRETE	6" VINYL	GYP. BD	PAINT	LAY IN CEILING	-	COMPLETED DURING A LATER PHASE
115 REHAB #2	VCT	6" VINYL	MOISTURE RESISTANT GYP. BD	FRP	LAY IN CEILING	-	COMPLETED DURING A LATER PHASE
116 REHAB #1	VCT	6" VINYL	MOISTURE RESISTANT GYP. BD	FRP	LAY IN CEILING	-	COMPLETED DURING A LATER PHASE
117 STORAGE	VCT	6" VINYL	GYP. BD	PAINT	LAY IN CEILING	-	COMPLETED DURING A LATER PHASE
118 KITCHEN / PREP.	VCT	6" VINYL	MOISTURE RESISTANT GYP. BD	FRP	LAY IN CEILING	-	COMPLETED DURING A LATER PHASE
119 CORRIDOR	VCT	6" VINYL	GYP. BD	PAINT	LAY IN CEILING	-	COMPLETED DURING A LATER PHASE
120 ISOLATION	VCT	6" VINYL	MOISTURE RESISTANT GYP. BD	FRP	GYP. BD.	PAINT	COMPLETED DURING A LATER PHASE
121 STORAGE	VCT	6" VINYL	GYP. BD	PAINT	GYP. BD.	PAINT	COMPLETED DURING A LATER PHASE
122 TRIAGE	VCT	6" VINYL	MOISTURE RESISTANT GYP. BD	FRP	GYP. BD.	PAINT	COMPLETED DURING A LATER PHASE
123 REHAB #3	VCT	6" VINYL	MOISTURE RESISTANT GYP. BD	FRP	GYP. BD.	PAINT	COMPLETED DURING A LATER PHASE
124 EMPLOYEE BATH	VCT	6" VINYL	GYP. BD	PAINT	GYP. BD.	PAINT	COMPLETED DURING A LATER PHASE
125 JANITOR	SEALED CONCRETE	6" VINYL	MOISTURE RESISTANT GYP. BD	FRP	GYP. BD.	PAINT	COMPLETED DURING A LATER PHASE
126 STORAGE	VCT	6" VINYL	GYP. BD	PAINT	GYP. BD.	PAINT	COMPLETED DURING A LATER PHASE
127 STORAGE	VCT	6" VINYL	GYP. BD	PAINT	GYP. BD.	PAINT	COMPLETED DURING A LATER PHASE
128 TREATMENT	VCT	6" VINYL	MOISTURE RESISTANT GYP. BD	FRP	LAY IN CEILING	-	COMPLETED DURING A LATER PHASE
129 EXAM	VCT	6" VINYL	MOISTURE RESISTANT GYP. BD	FRP	LAY IN CEILING	-	COMPLETED DURING A LATER PHASE
130 LAUNDRY	VCT	6" VINYL	MOISTURE RESISTANT GYP. BD	FRP	LAY IN CEILING	-	COMPLETED DURING A LATER PHASE
201 STORAGE	EXPOSED PLYWOOD	EXPOSED METAL BUILDING	EXPOSED FRAMING / METAL BUILDING				
202 STORAGE	EXPOSED PLYWOOD	EXPOSED METAL BUILDING	EXPOSED FRAMING / METAL BUILDING				COMPLETED DURING A LATER PHASE

NOTES: * ALL FRP PANELS INSTALLED TO 9'-0" A,F,F.
VCT - 12'X12' 1/8" STANDARD VINYL COMPOSITION TILE

GENERAL NOTES
ALL GREYED OUT ITEMS WERE CONSTRUCTED DURING BASE PHASE I OR ARE TO BE CONSTRUCTED DURING PHASE II



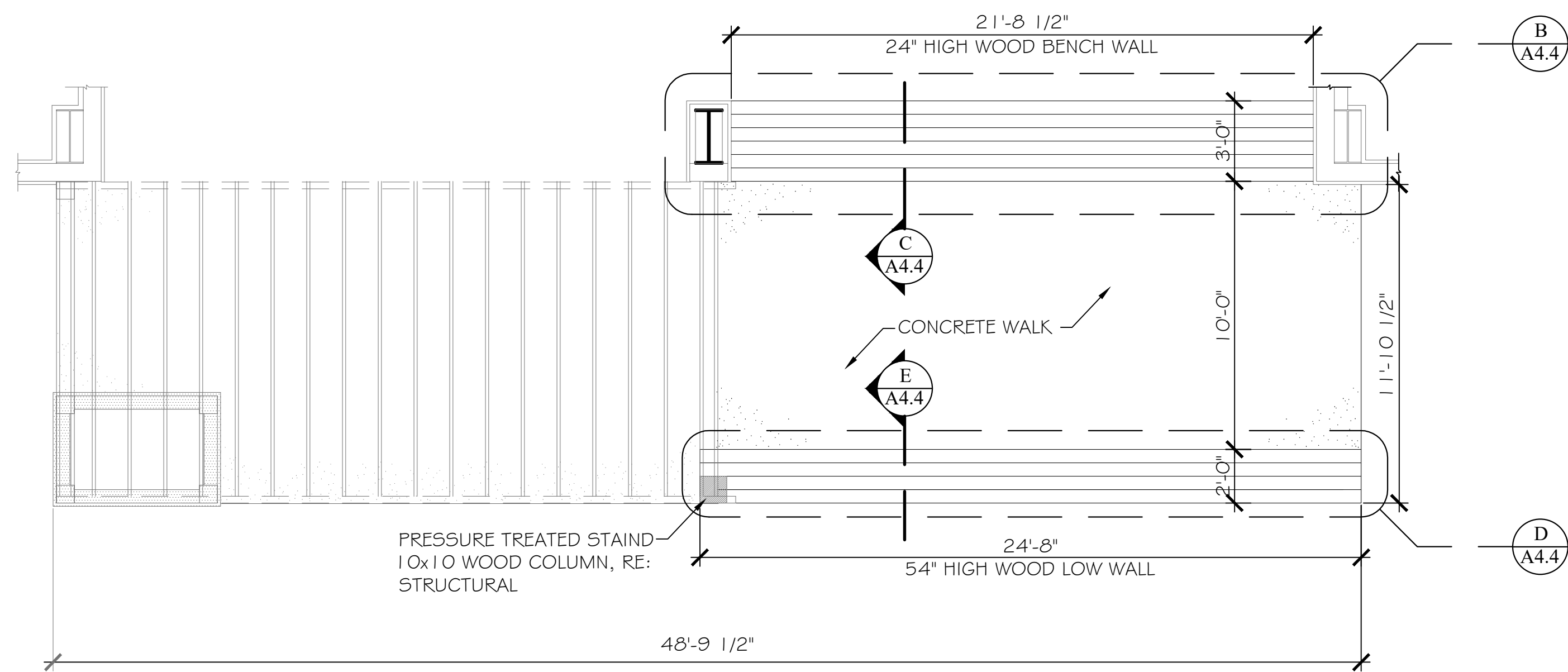
PHASE I DRAWINGS FOR
 ORANGE BEACH
TRAIL SHOP / WILDLIFE CENTER
 ORANGE BEACH
 ALABAMA

JOB NO.: 21-05
 DRAWN: CLT
 CHECKED: SBM
 DATE: 2021.06.01
 REVISION:
 ADDENDUM 2 2022.03.04

SCALE: 1/4"=1'-0"
 SHEET NO.:
ALT 1
A2.1
 DOOR, WINDOW & FINISH SCHEDULE

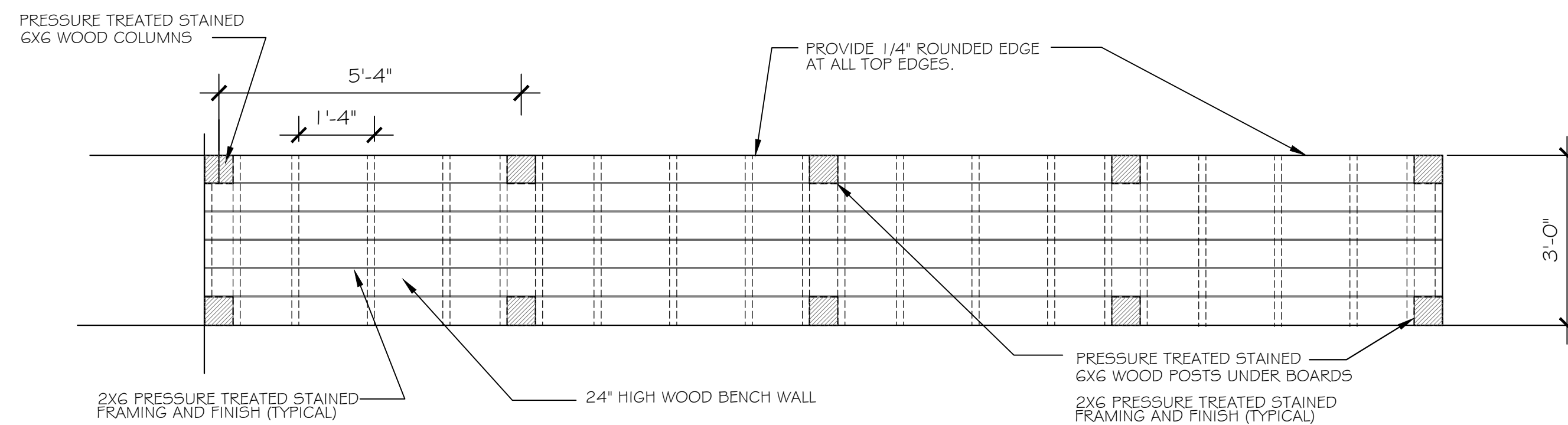


McCULLOUGH
ARCHITECTURE, INC.
P.O. BOX 6310
GULF SHORES, ALABAMA
36547-6310
PHONE: 251-968-7222

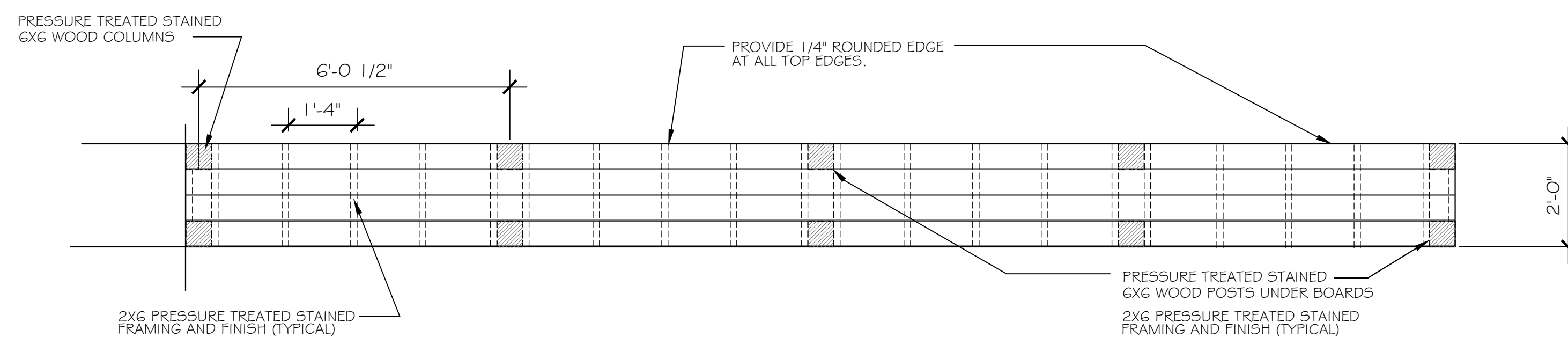


A
A4.3 PLAN
SCALE 1/4"=1'-0"

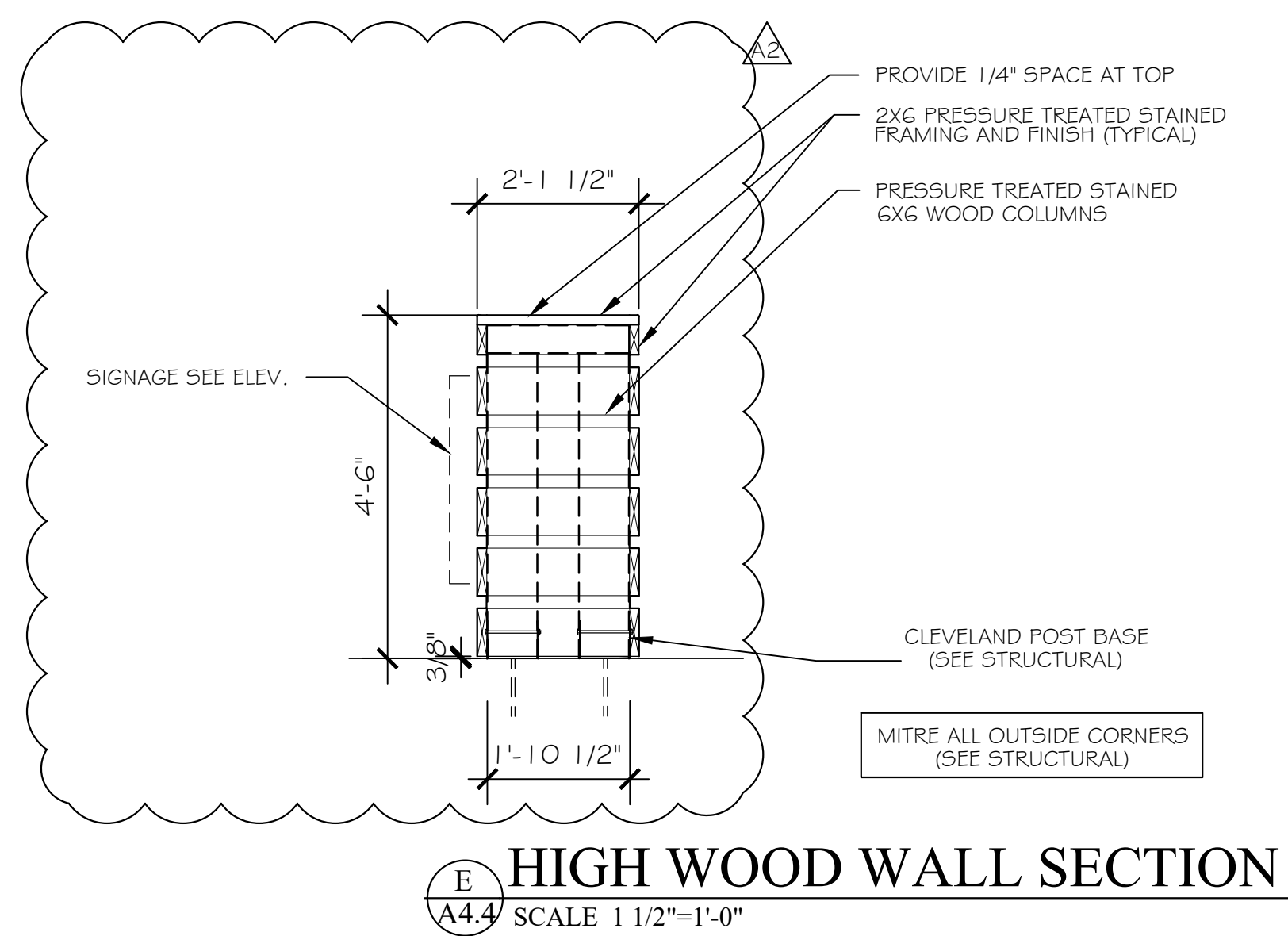
NOTES
REFER TO SPECIFICATIONS FOR EXTERIOR FASTENING, NAILING AND ALL REQUIREMENTS FOR EXTERIOR FINISH WOOD AND SIDING (SEE STRUCTURAL)
MITRE ALL OUTSIDE CORNERS (SEE STRUCTURAL)



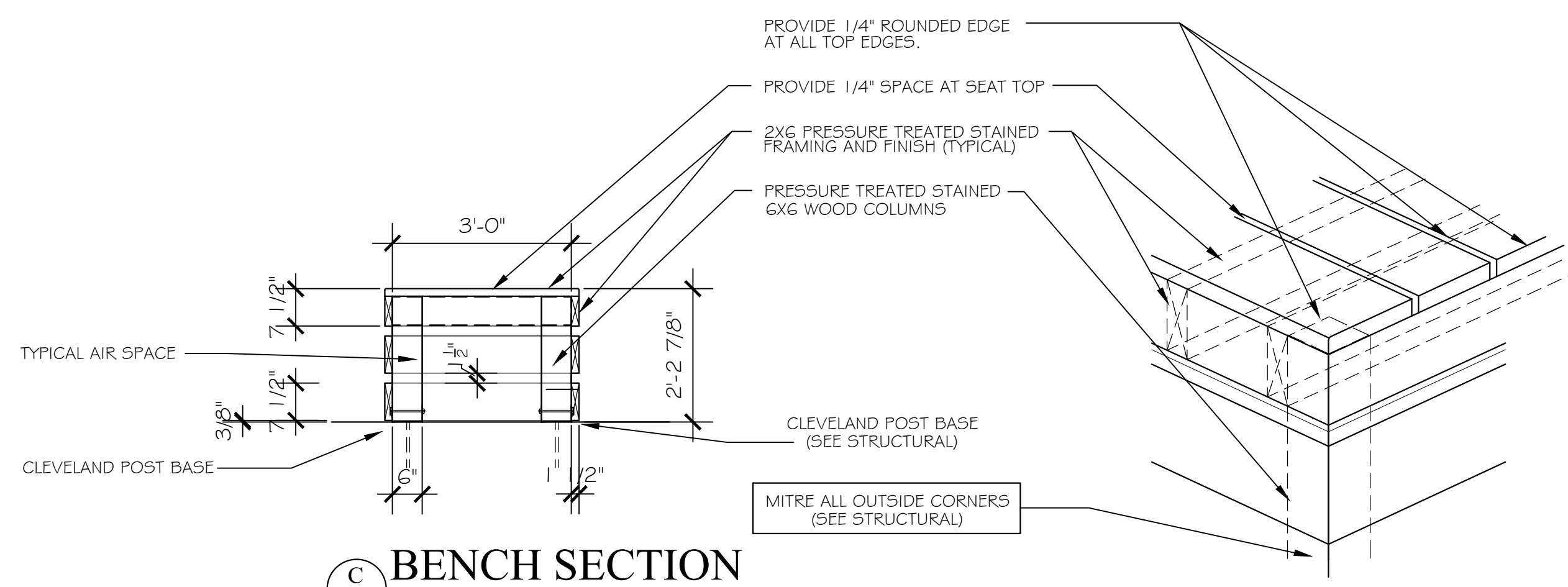
B
A4.4 WOOD BENCH WALL
SCALE 1 1/2"=1'-0"



D
A4.4 HIGH WOOD WALL PLAN
SCALE 1 1/2"=1'-0"



E
A4.4 HIGH WOOD WALL SECTION
SCALE 1 1/2"=1'-0"



C
A4.4 BENCH SECTION
SCALE 1/2"=1'-0"

F
A4.4 PARTIAL AXON
SCALE 1/2"=1'-0"

PHASE I DRAWINGS FOR
ORANGE BEACH
TRAIL SHOP / WILDLIFE CENTER
ORANGE BEACH
ALABAMA

JOB NO.: 21-05
DRAWN: CLT
CHECKED: SBM
DATE: 2021.06.01
REVISION:
ADDENDUM 2 2022.03.04

SCALE: 1/2" = 1'-0"

SHEET NO.:
ALT 2
A4.4

SECTIONS AND DETAILS



McCULLOUGH
ARCHITECTURE, INC.
P.O. BOX 6310
GULF SHORES, ALABAMA
36547-6310
PHONE: 251-968-7222



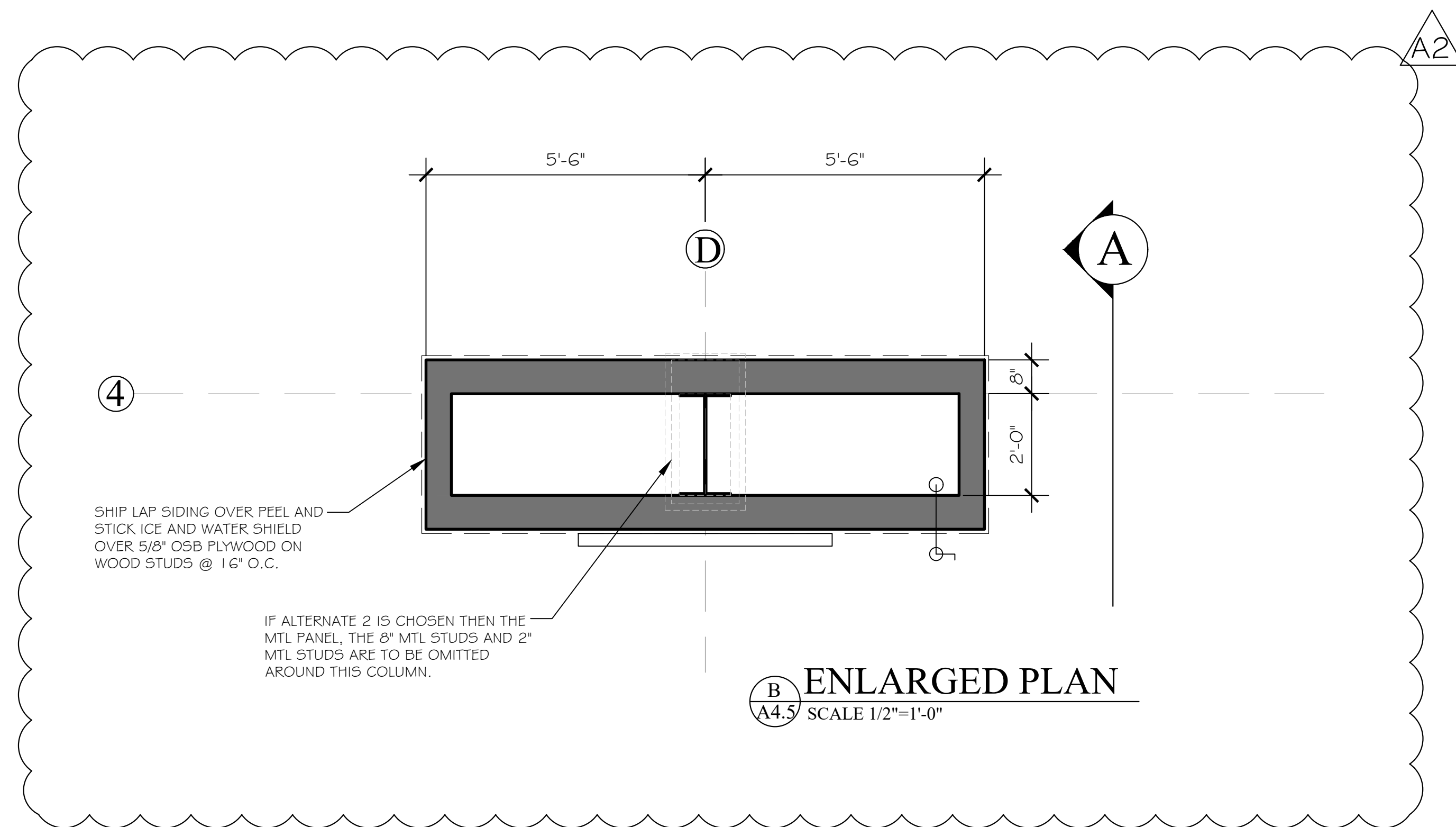
PHASE I DRAWINGS FOR
ORANGE BEACH
TRAIL SHOP / WILDLIFE CENTER
ORANGE BEACH
ALABAMA

JOB NO.: 21-05
DRAWN: CLT
CHECKED: SBM
DATE: 2021.06.01
REVISION:
ADDENDUM 2 2022.03.04

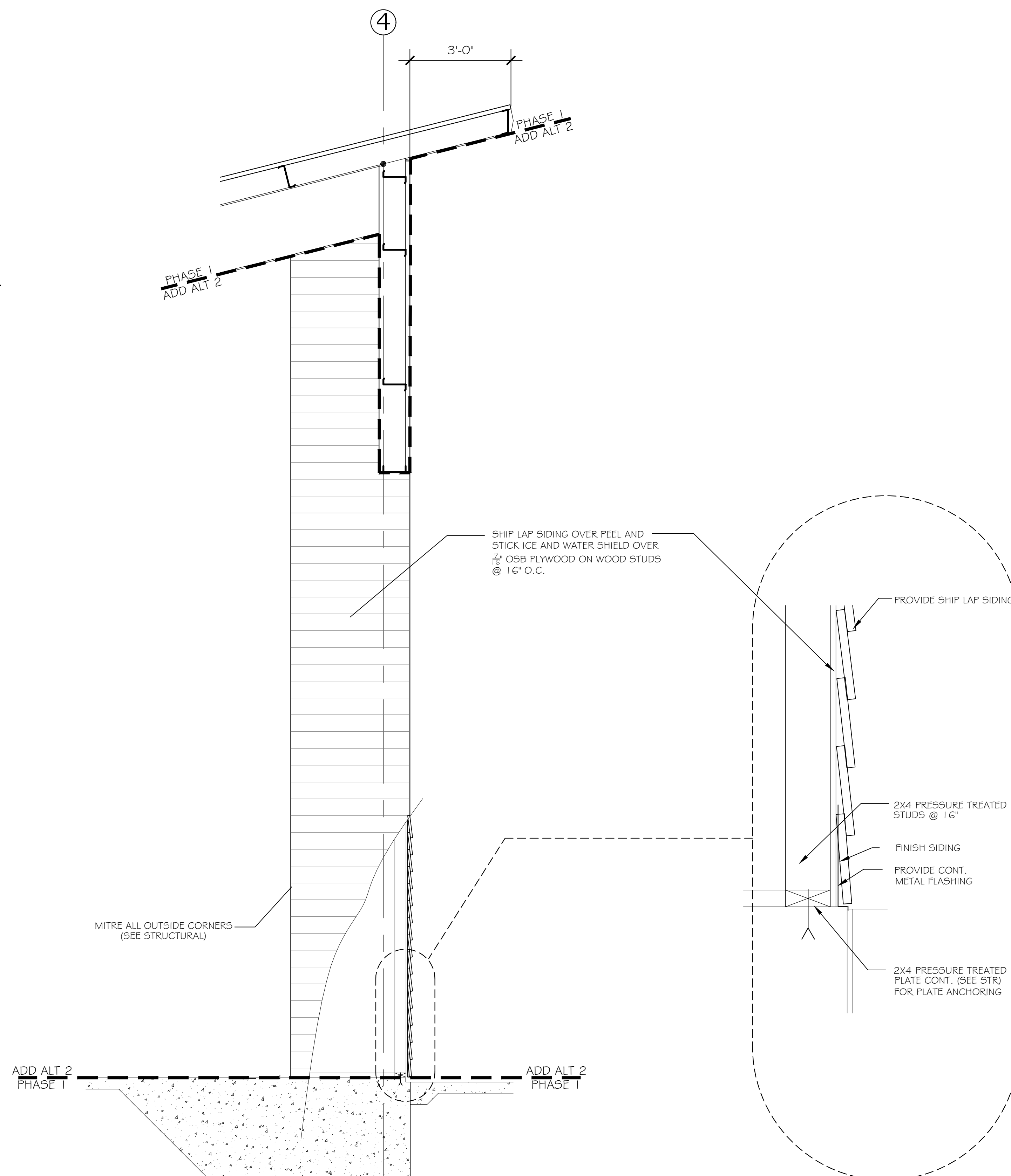
SCALE: 1/2" = 1'-0"

SHEET NO.:
ALT 2
A4.5

SECTIONS AND DETAILS



NOTE:
REFER TO SPECIFICATIONS FOR EXTERIOR FASTENING, NAILING AND ALL REQUIREMENTS FOR EXTERIOR FINISH WOOD AND SIDING (SEE STRUCTURAL)



PHASE I ADD ALTERNATE 2