

ABBREVIATIONS

AC acoustical	GB grab bar	RM room
ACM acoustical mylar	GPBD gypsum board	RB rubber base
AFF above finished floor	HBD hardboard	SLR sealer
AGG aggregate	HDW hardware	SEC section
AL aluminum	HWD hardwood	SHT sheet
BLK block	HT height	SIM similar
BD board	HCW hollow core wood	SCW solid core wood
BRK brick	HM hollow metal	SB splash block
BRZ bronze	INCL include (d), (ing)	SPEC specification (s)
CPT carpet (ed)	INT interior	SS stainless steel
CK caulk (ing)	JT joint	ST stain
CLG ceiling	KIT kitchen	STL steel
CER ceramic	LAM laminate (d)	STN stone
CLR coloring	MTL material (s)	STUC stucco
CT ceramic tile	MES metal edge strip	SYM symmetry (ical)
C concrete	MET metal	SYN synthetic
CMU concrete masonry unit	MISC miscellaneous	TZ terrazzo
CONT continuous or continue	MR moisture resistant	THK thick (ness)
DS downspout	NIC not in contract	THR threshold
DTL detail	NTS not to scale	T&G tongue & groove
DNG drawing	O oil	TXP textured paint
DF drinking fountain	OC on center (s)	TYP typical
ELEC electric (al)	OPP opposite	UNF unfinished
EP epoxy paint	OH overhead	VIN vinyl
EQ equal	P paint (ed)	VCT vinyl composite tile
EWH electric water heater	PNL paneling	WVC vinyl wall covering
EXP exposed	PBD particle board	WSCW wainscot
EXT exterior	PVMT pavement	WRGB water-resistant gyp bd
FAC factory applied finish	PL plaster	W wax
FIN finish (ed)	PLAS plastic	WIN window
FLR floor (ing)	PLAM plastic laminate	WG wired glass
FBO furnished by others	PWD plywood	WD wood
GA gauge	QT quarry tile	
GALV galvanized	REF refrigerator	
GL glass, glazing		

BUILDING CODES

International Building Code (IBC), 2012 edition
 International Mechanical Code (IMC), 2012 edition
 International Plumbing Code (IPC), 2012 edition
 ADA Standards for Accessible Design, 2010 edition

CODE INFORMATION

OCCUPANCY CLASSIFICATION - IBC SECTION 304 - BUSINESS GROUP B (LESS THAN 50 OCCUPANTS)
 OCCUPANT LOAD - IBC TABLE 1004.1.2 BUSINESS, 100 SF GROSS PER OCCUPANT / ACCESSORY EQUIPMENT / STORAGE 300 SF GROSS PER OCCUPANT
 ALLOWABLE HEIGHT/AREA - IBC TABLE 503 - HEIGHT = 40', ALLOWABLE AREA BUSINESS = 9,000
 CONSTRUCTION TYPE - IBC TABLE 602.3 TYPE VB
 EXIT ACCESS TRAVEL DISTANCE - IBC TABLE 1016.1 - MAXIMUM TRAVEL DISTANCE FOR NON-SPRINKLED = 200'
 EGRESS WIDTH PER OCCUPANT SERVED - IBC TABLE 1005.3.2 = STAIRWAYS 0.3' / OTHER 0.2' PER OCCUPANT

BUILDING DATA

BUILDING ADDITION: 253 SF AT 300 SF PER OCCUPANT = 1 OCCUPANT
 EXISTING BUILDING FIRST FLOOR: 439 SF PER OCCUPANT AT 100 SF PER OCCUPANT = 5 OCCUPANTS
 EXISTING BUILDING SECOND FLOOR: 439 SF AT 300 SF PER OCCUPANT = 2 OCCUPANTS
 TOTAL BUILDING: 1,130.5 SF TOTAL WITH 8 OCCUPANTS TOTAL
 TOILET BUILDING HEIGHT: 20'-11"

DRAWING INDEX

COVER DRAWING	REV. NO.	REV. DATE
A0.1 CODES AND INFO	2	5/18/2018
ARCHITECTURAL		
A2.1 FLOOR PLAN	2	5/18/2018
A3.1 BUILDING ELEVATIONS	0	2/9/2018
A3.2 BUILDING SECTIONS	0	2/9/2018
A5.1 OPENINGS	0	2/9/2018
A8.2 WALL SECTIONS	0	2/9/2018
STRUCTURAL		
S2.1 FOUNDATION PLAN	0	2/26/2018
S2.2 ROOF FRAMING PLAN	0	2/26/2018
PLUMBING		
P1.0 PLUMBING FLOOR PLAN	0	2/14/2018
P2.0 PLUMBING SCHEDULES	0	2/14/2018
MECHANICAL		
M1.0 MECHANICAL FLOOR PLAN	0	2/14/2018
ELECTRICAL		
E1.1 ELECTRICAL SITE PLAN, SITE DETAILS	0	2/9/2018
E2.1 FLOOR PLANS, LEGEND, NOTES, DETAILS, SCHEDULES	0	2/9/2018
E3.1 RISER DIAGRAM, SPECIFICATIONS, ENERGY CODE COMPLIANCE	0	2/9/2018

GRAPHIC SYMBOLS

AREA NUMBER
 DOOR NUMBER
 WINDOW NUMBER
 ROOM AND SPACE NUMBER
 TOILET ACCESSORIES
 EQUIPMENT
 REVISIONS
 WALL TYPE
 REFERENCE GRID
 SECTION NUMBER
 SECTION REFERENCE
 SHEET NUMBER WHERE DRAWN
 DETAIL NUMBER
 DETAIL REFERENCE
 SHEET NUMBER WHERE DRAWN
 ELEVATION NUMBER
 INTERIOR ELEVATION INDICATOR
 SHEET NUMBER WHERE DRAWN
 DETAIL NUMBERS
 WALL TYPES
 SHEET NUMBER WHERE DRAWN

EARTH	ROUGH WOOD	BATT OR BLOWN-IN INSULATION
STONE FILL	FINISH WOOD	RIGID INSULATION
CONCRETE	PLYWOOD	GYPSUM BOARD
CONCRETE BLOCK	STEEL (LARGE SCALE)	ACOUSTICAL TILE
BRICK	STEEL (SMALL SCALE)	MARBLE

APPROVAL STAMPS

ARCHITECT

Jerry W. Reynolds
 architect

architecture planning interior design
 904 WEST CYNTHIA TRAIL
 GOODLETTSVILLE, TN 37072-3517
 PHONE (615) 855 - 0406

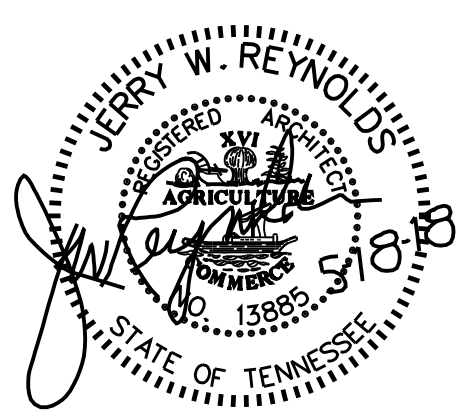
CONSULTANTS



Gresham Schelton
 ENGINEERING

Jerry W. Reynolds
 architect

architecture planning interior design
 904 WEST CYNTHIA TRAIL
 GOODLETTSVILLE, TN 37072-3517
 PHONE (615) 855 - 0406



RESERVED FOR SEAL

RESERVED FOR CONSULTANT LOGO

LOCAL PARK AND RECREATION FUND
 THE TENNESSEE DEPARTMENT OF ENVIRONMENT AND CONSERVATION
 RESTROOM / EQUIPMENT BUILDING
PEAY PARK SPLASH PAD
 GOODLETTSVILLE, TENNESSEE

PROJECT INFORMATION

5/18/18 JR REVIEW COMMENTS

NO. DATE BY REVISION

DRAWN BY JERRY W. REYNOLDS

DESIGNED BY JERRY W. REYNOLDS

APPROVED BY

JOB NO. 517A556

DATE 2/9/2018

SCALE NOT TO SCALE

CODES AND INFO

DRAWING NUMBER

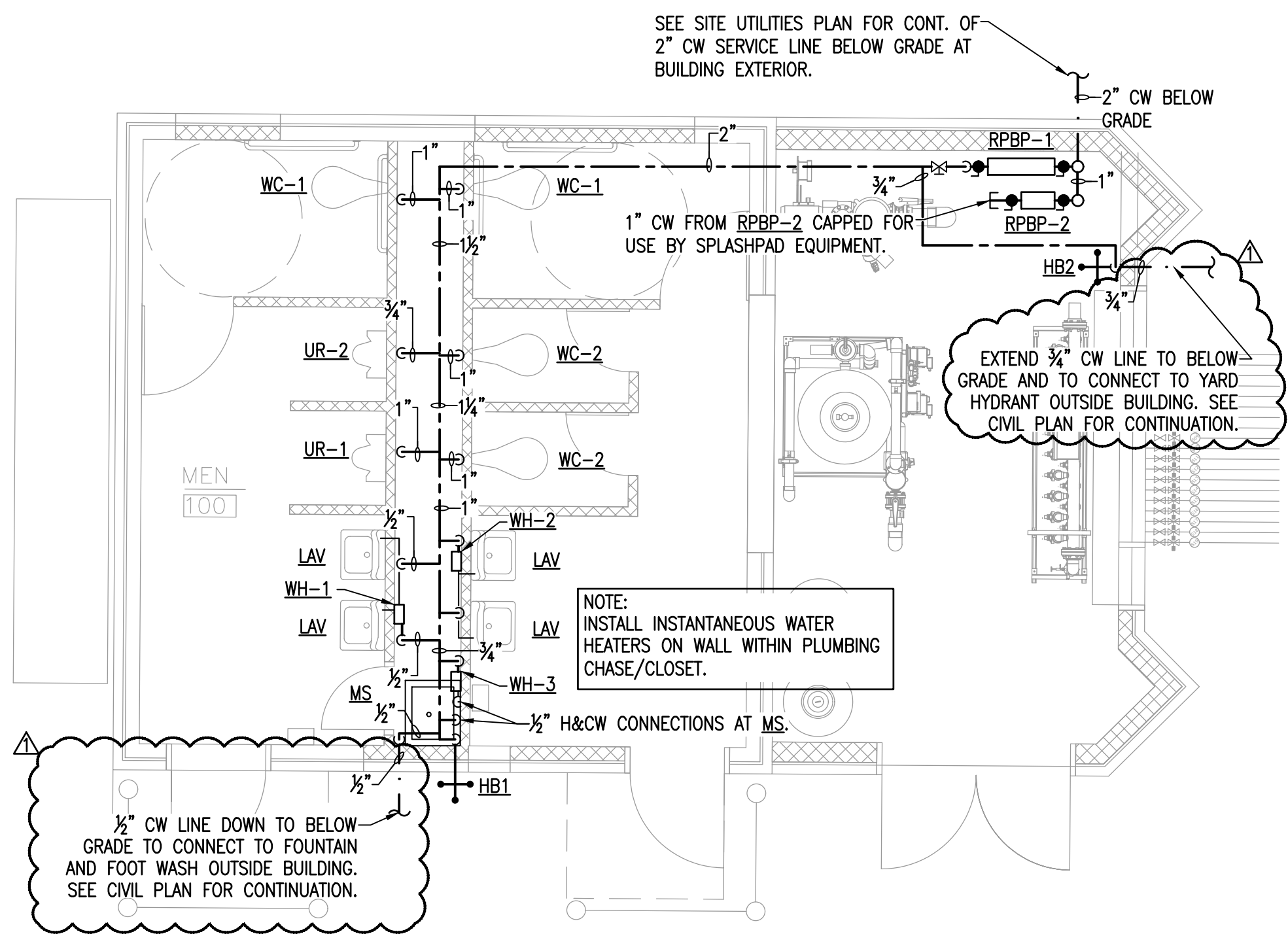
A0.1

CADD FILE NO.



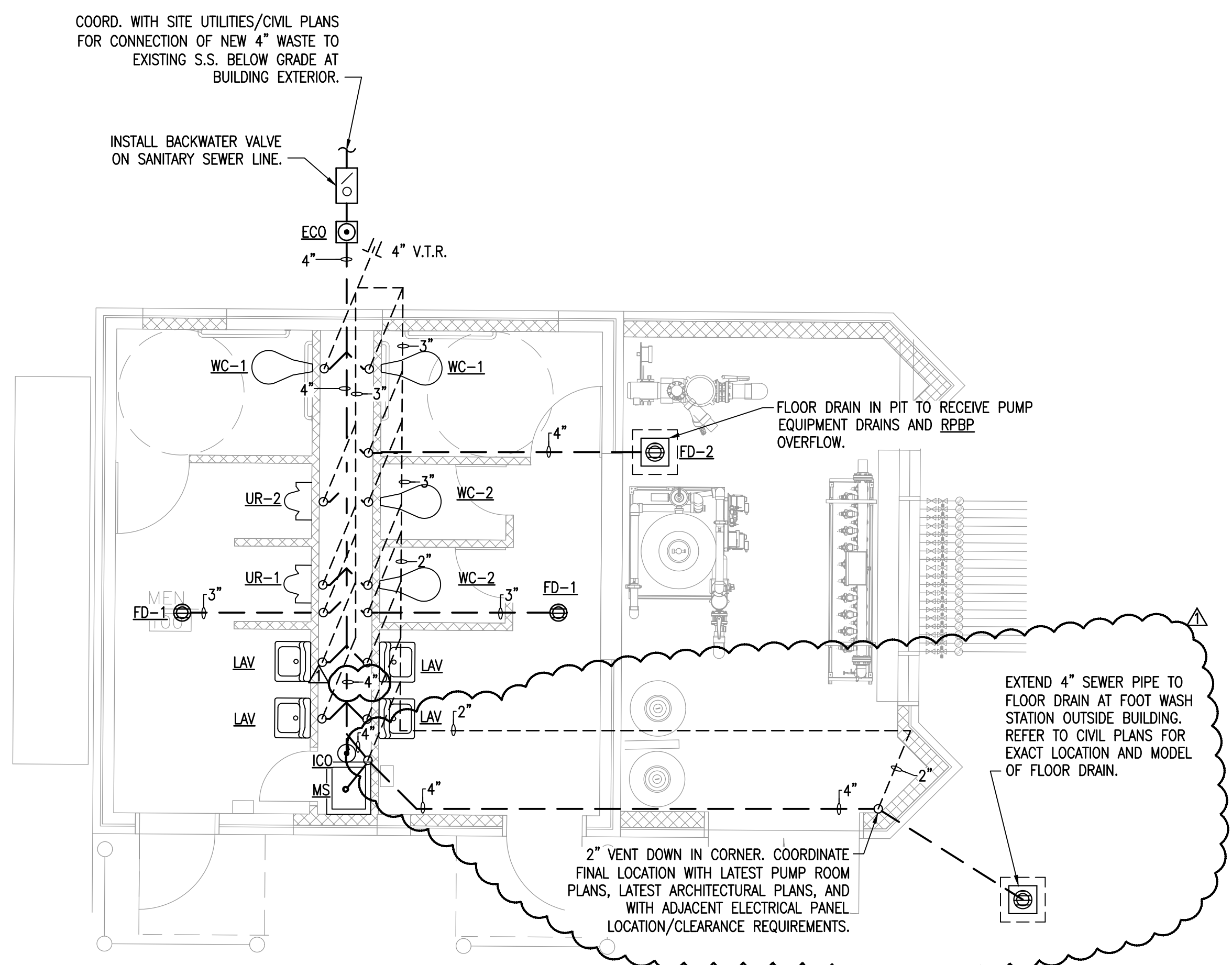
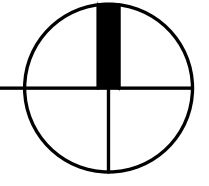
Gresham Schelton
ENGINEERING
1163 West Main St
Franklin, TN 37064
Tel: 615.730.9111
Fax: 615.224.3599
Project #17-178

PLUMBING LEGEND	
SYMBOL	DESCRIPTION
---	COLD WATER ABOVE SLAB
- - -	HOT WATER ABOVE SLAB
---	COLD WATER BELOW SLAB OR GRADE
- - -	WASTE LINE BELOW SLAB OR GRADE
- - -	VENT LINE ABOVE OR BELOW SLAB
⊕	EXTERIOR CLEANOUT UP FROM BELOW SLAB OR GRADE
⊖	CLEANOUT UP FROM BELOW FLOOR OR SLAB
⊖	PIPE TURNED DOWN
⊕	PIPE TURNED UP
WC-1, ETC.	FIXTURE IDENTIFICATIONS
CW	COLD WATER
HW	HOT WATER
///	EXISTING PLUMBING THIS LOCATION TO BE REMOVED



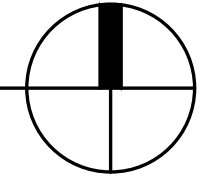
PLUMBING WATER PIPING

SCALE: 1/4" = 1'-0"



PLUMBING WASTE/VENT

SCALE: 1/4" = 1'-0"



LOCAL PARK AND RECREATION FUND
THE TENNESSEE DEPARTMENT OF ENVIRONMENT AND CONSERVATION
RESTROOM EQUIPMENT BUILDING
PEAY PARK SPLASH PAD
GOODLETTSVILLE, TENNESSEE

PROJECT INFORMATION

NO. DATE	BY	REVISION
1	EGC	02.20.18

REVISION 1 02.20.18

DRAWN BY: MWD / SCT
DESIGNED BY: EGC
APPROVED BY: EGC
ARCH JOB NO. 517A556
DATE: 01/30/2018
SCALE: NOTED

PLUMBING FLOOR PLAN

DRAWING NUMBER

P1.0



Gresham Schelton
ENGINEERING
1163 West Main St
Franklin, TN 37064
Tel: 615.730.9111
Fax: 615.224.3599
Project #17-178

LOCAL PARK AND RECREATION FUND
THE TENNESSEE DEPARTMENT OF ENVIRONMENT AND CONSERVATION
RESTROOM / EQUIPMENT BUILDING
PEAY PARK SPLASH PAD
GOODLETTSVILLE, TENNESSEE

PROJECT INFORMATION

REVISION 1 02.20.18

NO. DATE BY REVISION

DRAWN BY MWD / SCT

DESIGNED BY ECG

APPROVED BY ECG

ARCH JOB NO. 517A556

DATE 01/30/2018

SCALE NOTED

PLUMBING SCHEDULES

DRAWING NUMBER

P2.0

CADD FILE NO.

GENERAL PLUMBING SPECIFICATIONS

FURNISH, INSTALL, PROVIDE AND MAKE OPERATIVE ALL EQUIPMENT MATERIALS, SUPERVISION, LABOR AND ANY AND ALL ITEMS NECESSARY FOR THE PROPER INSTALLATION OF THE CORRECTLY FUNCTIONING PLUMBING SYSTEM AS SHOWN ON THE DRAWINGS AND SPECIFIED HEREIN.

EQUIPMENT SHALL BE INSTALLED IN ACCORDANCE WITH THE MANUFACTURER'S RECOMMENDATIONS. EQUALS MAY BE SUBSTITUTED ONLY IF PRIOR APPROVAL IS OBTAINED FROM OWNER.

ORDINANCES, PERMITS AND CODES: THE WORKMANSHIP AND MATERIALS COVERED BY THESE SPECIFICATIONS SHALL CONFORM TO ALL REGULATIONS OF ALL THE AUTHORITIES HAVING JURISDICTION.

THE CONTRACTOR SHALL OBTAIN AND PAY FOR ALL PERMITS, CONNECTION AND INSPECTION FEES AS REQUIRED FOR THE COMPLETE INSTALLATION OF THE PLUMBING SYSTEM.

THE LOCATION OF PIPING AND EQUIPMENT, AS SHOWN ON THE DRAWINGS, IS DIAGRAMMATIC AND SCHEMATIC AND IT IS THE RESPONSIBILITY OF THE CONTRACTOR TO MAKE HIS OWN WORKING LAYOUT TO ELIMINATE ALL STRUCTURAL AND ARCHITECTURAL CONFLICTS IN THE BUILDING.

WASTE OR WATER PIPING PASSING THRU OR UNDER FOOTING / FOUNDATION SHALL BE PROTECTED BY A STEEL SLEEVE (TWO SIZES LARGER) OR AN APPROVED RELIEVING ARCH.

VERIFY ALL MEASUREMENTS AT THE SITE AND COORDINATE ALL WORK SO THAT IT DOES NOT INTERFERE WITH THE WORK OF THE OTHER TRADES.

INSULATION: ALL INSULATION, INCLUDING JACKET, OR FACING AND ADHESIVE USED TO ADHERE FACING OR JACKET TO THE INSULATION SHALL HAVE A COMPOSITE FIRE AND SMOKE HAZARD RATING TESTED BY THE PROCEDURE RECOMMENDED BY ASTM E-84, NFPA 225 OR U.L. 723, NOT EXCEEDING: FLAME SPREAD 25, SMOKE DEVELOPED 50. ALL INSULATION ACCESSORIES SHALL ALSO HAVE THE RATING LISTED ABOVE.

DOMESTIC WATER PIPES SHALL BE INSULATED WITH ONE (1) INCH THICK PREFORMED HIGH DENSITY FIBERGLASS WITH FACTORY APPLIED VAPOR BARRIER AND SELF SEALING LAP, SUCH AS MANWILE MICRO-LOK.

DOMESTIC WATER PIPES SHALL BE TYPE "L" COPPER ABOVE GROUND / SLAB AND TYPE "K" COPPER BELOW GRADE / SLAB. INSTALL DIELECTRIC UNIONS AT CONNECTION TO DISSIMILAR METALS. ALTERNATIVE WATER PIPING MATERIAL SHALL BE WIRSBO "PEX" POLYETHYLENE CROSS-BRACED PIPING WITH BRASS / COPPER FITTINGS.

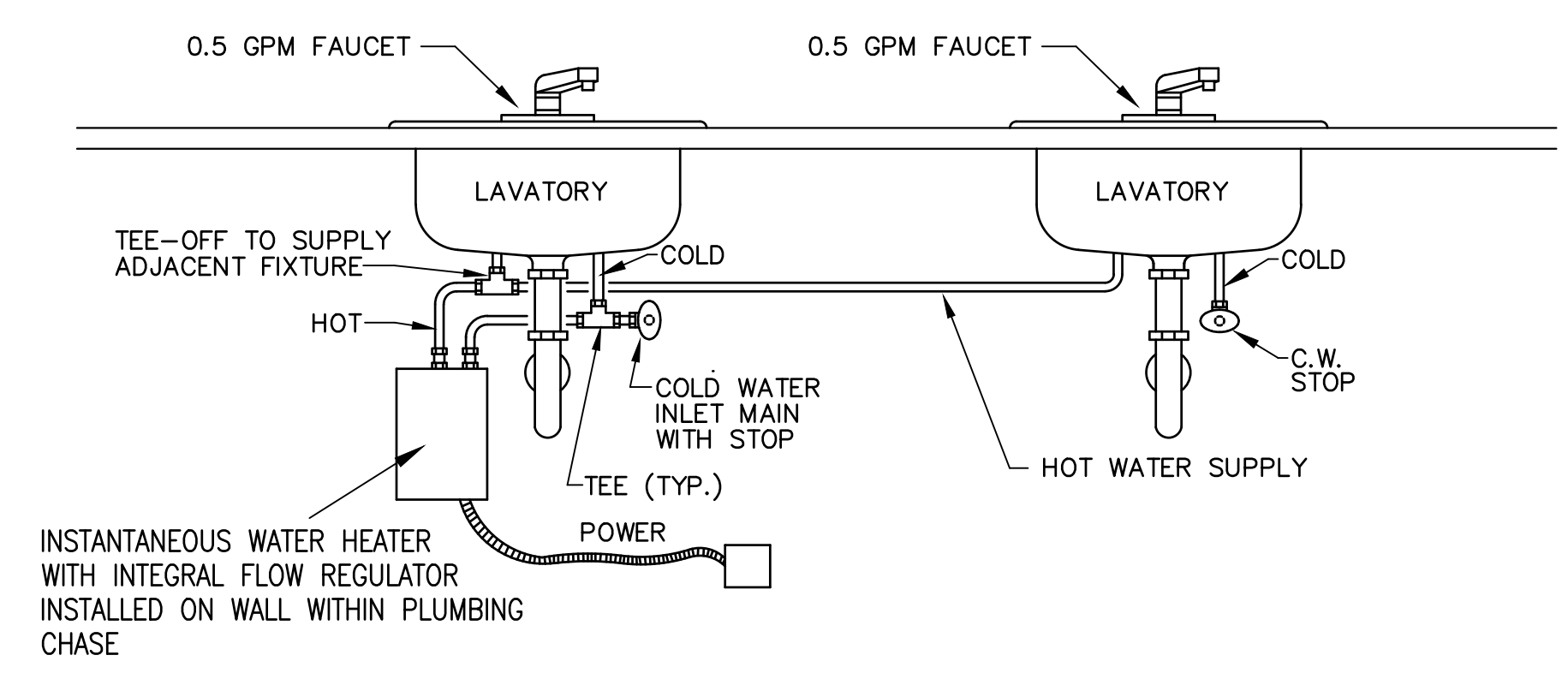
ANY WATER PIPING ROUTED IN AN EXTERIOR WALL OR OTHERWISE EXPOSED TO FREEZING TEMPERATURES SHALL BE PROVIDED WITH CHROMALOX SRF (OR EQUAL) SELF-REGULATING FREEZE PROTECTION CABLE - 8 WATTS PER LINEAL FOOT OF PIPING.

ANY PIPE PENETRATING A RATED WALL, CEILING OR FLOOR SHALL DO SO IN A MANNER THAT MAINTAINS THE INTEGRITY AND FIRE RATING OF THE STRUCTURE.

SANITARY WASTE AND VENT PIPE SHALL BE CAST IRON WITH NO-HUB FITTINGS. SCHEDULE 40 PVC PERMISSIBLE IF NOT ROUTED WITHIN A RETURN AIR PLENUM.

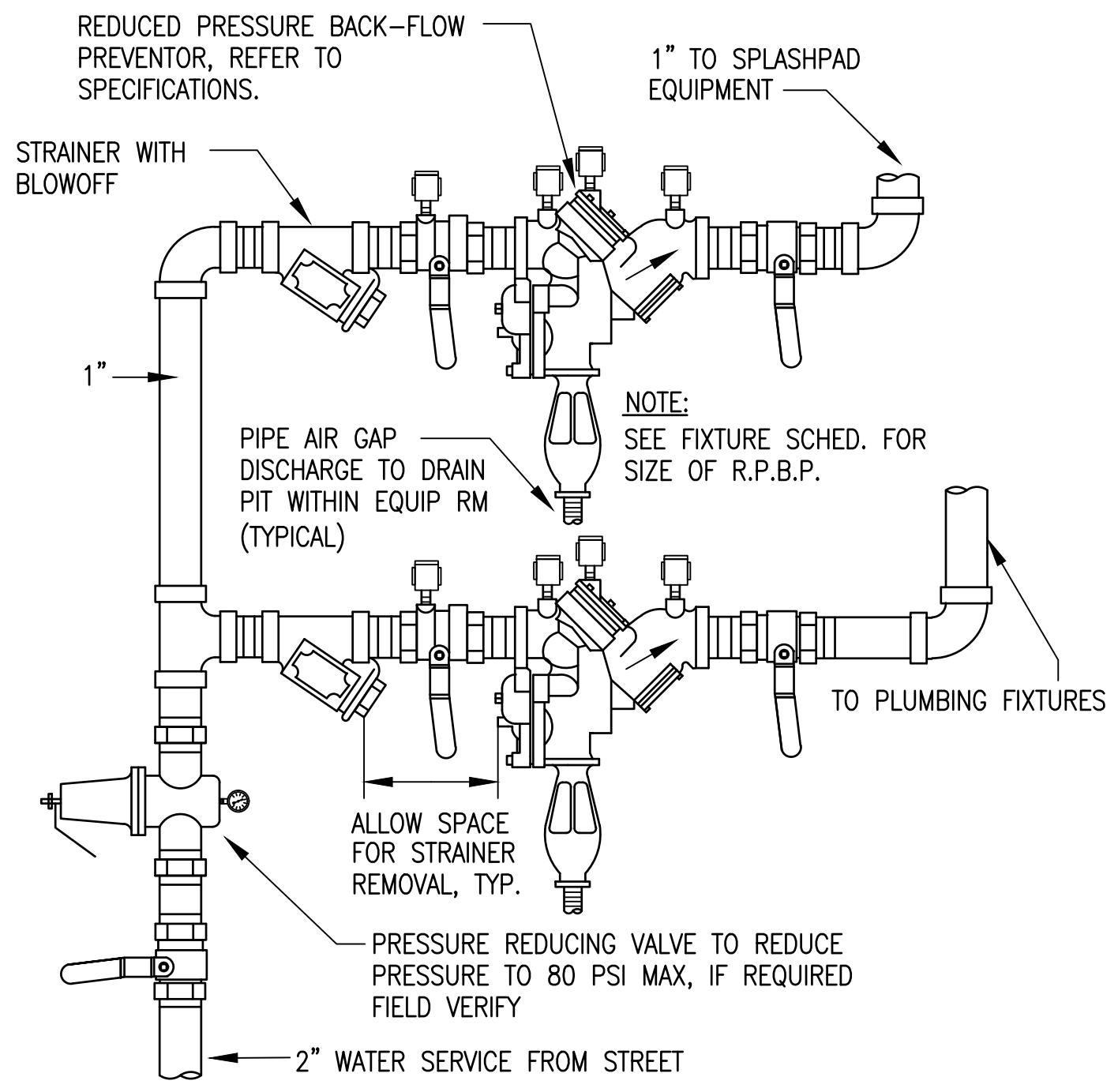
IT IS THE INTENT OF THESE DRAWINGS TO COVER ALL WORK FOR A COMPLETE FIRST CLASS PLUMBING INSTALLATION - ANY EQUIPMENT, TRIM HARDWARE AND/OR DEVICES USUALLY CLASSIFIED IN THIS CLASS OF WORK, THOUGH NOT SPECIFICALLY MENTIONED OR SHOWN ON THE DRAWINGS, BUT WHICH MAY BE NECESSARY FOR THE SATISFACTORY COMPLETION OF THE WORK (AS DETERMINED BY THE CONSTRUCTION MANAGER) SHALL BE FURNISHED AND INSTALLED BY THE PLUMBING CONTRACTOR AS PART OF HIS TOTAL WORK.

NOTE: CONTRACTOR MUST INSTALL RPBP WITH ALL REQUIRED CLEARANCES AS DICTATED BY LOCAL AUTHORITY HAVING JURISDICTION. COORDINATE WITH LOCAL UTILITY DEPARTMENT AND CITY REQUIREMENTS. ALERT ARCHITECT AND ENGINEER TO ANY DISCREPANCIES PRIOR TO PURCHASE AND INSTALLATION



**ELECTRIC INSTANTANEOUS WATER HEATER
DOUBLE SINK INSTALLATION DETAIL**

SCALE: NONE



**REDUCED PRESSURE BACKFLOW
PREVENTER SCHEMATIC**

SCALE: NONE

PLUMBING SCHEDULE

MARK	DESCRIPTION	UTILITIES			
		CW	HW	DR	VENT
WC-1	WATER CLOSET (ACCESSIBLE, WALL HUNG, FLUSH VALVE): AMERICAN STANDARD 2257.101, AFWALL, WALL HUNG, WATERSAVER, VITREOUS CHINA, ELONGATED BOWL WITH A SLOAN REGAL 116-ADA FLUSH VALVE AND A BEMIS 1655CT WHITE OPEN FRONT SEAT. PROVIDE A JOSAM FIG. NO. 14464 OR 14484 CARRIER. MOUNT FIXTURE WITH FLOOD RIM 16-3/4" AFF. INSTALL WITH HANDLE ON 'OPEN-SIDE' OF TOILET FOR EASE OF ACCESS (FIELD COORDINATE)	1"	X	4"	2"
WC-2	WATER CLOSET (WALL HUNG, FLUSH VALVE): AMERICAN STANDARD 2257.101, AFWALL, WALL HUNG WATER SAVER, VITREOUS CHINA, ELONGATED BOWL WITH A SLOAN REGAL 111-XL FLUSH VALVE AND A BEMIS 1655CT WHITE OPEN FRONT SEAT. PROVIDE A JOSAM FIG. NO. 14464 OR 14484 CARRIER. MOUNT FIXTURE WITH FLOOD RIM 15" AFF.	1"	X	4"	2"
LAV	LAVATORY (ACCESSIBLE, WALL HUNG, SINGLE LEVER, GRID DRAIN): AMERICAN STANDARD 2175.504 FAUCET, AMERICAN STANDARD 7723.018 OFFSET GRID DRAIN, AN EBC TA125 P-TRAP AND(2) LA-10 SUPPLIES WITH STOPS. PROVIDE A JOSAM FIG. NO. 17100-67 CARRIER AND A TRUEBRO INC., HANDI-LAV-GUARD INSULATION KIT MODEL 102W WITH ACCESSORY 105W. MOUNT FIXTURE WITH FLOOD RIM 34" A.F.F. PROVIDE TEMPERATURE LIMITING VALVE FOR MAX. 110° F HOT WATER.	1/2"	1/2"	1 1/4"	1 1/4"
UR-1	URINAL (ACCESSIBLE, WALL HUNG, FLUSH VALVE): AMERICAN STANDARD 6501.010, KOHLER K-4960-T, VITREOUS CHINA, URINAL WITH ELONGATED RIM AND A 3/4" TOP SPUD. PROVIDE A ZURN Z-6003XL-WS1 FLUSH VALVE. PROVIDE A JOSAM FIG. NO. 17810 CARRIER. MOUNT FIXTURE WITH ELONGATED RIM 17" A.F.F. AND FLUSH VALVE HANDLE NO MORE THAN 44" A.F.F.	3/4"	X	2"	1 1/2"
UR-2	URINAL (WALL HUNG, FLUSH VALVE): AMERICAN STANDARD 6501.010, WASHBROOK, WATERSAVER VITREOUS CHINA URINAL WITH A 3/4" TOP SPUD AND A SLOAN REGAL 186-1-XL FLUSH VALVE. PROVIDE A JOSAM FIG. NO. 17810 CARRIER.	3/4"	X	2"	1 1/2"
FD-1	FLOOR DRAIN (3"): JOSAM FIG. NO. 30003-6S-Y-ARE WITH PUSH-ON CONNECTION AND A 6" ROUND, NICKEL, BRONZE STRAINER.	X	X	3"	1 1/2"
FD-2	FLOOR DRAIN (4"): JOSAM FIG. NO. 30003-6S-Y-ARE WITH PUSH-ON CONNECTION AND A 6" SQUARE, NICKEL, BRONZE STRAINER.	X	X	4"	2"
HB1	HOSE BIBB (NON-FREEZE, KEYS HANDLE): WOODFORD MODEL 65, 3/4", AUTOMATIC DRAINING BRASS FINISH, NIDEL MODEL 34HA VACUUM BREAKER. PROVIDE LOOSE TEE KEY FOR EACH HYDRANT.	3/4"	X	X	X
HB2	HOSE BIBB (STANDARD): WATTS MODEL SC-4, 3/4" HOSE BIBB WITH A 8-A VACUUM BREAKER.	3/4"	X	X	X
ICO	INTERIOR CLEAN-OUT ZURN #Z-1400-T WITH FLANGE & C.C. (SEE PLANS FOR SIZES)	X	X	X	X
ECO	EXTERIOR CLEAN-OUT ZURN #1400 WITH HEAVY DUTY COVER PLATE (SEE PLANS FOR SIZES)	X	X	X	X
WH	WATER HEATER (ELECTRIC, 6 GALLON, 1.5 KW): A. O. SMITH MODEL EJC-6, 6 GALLON ENERGY EFFICIENT WATER HEATER RATED AT 1.5 KW, 120-1-60. FURNISHED WITH LOCHINVAR MODEL #1 SHELF. PROVIDE PAN AND INSTALL HEATER PER DETAIL ON CONTRACT DRAWINGS.	3/4"	3/4"	X	X
RPBP-1	REDUCED PRESSURE BACKFLOW PREVENTER: WATTS MODEL 909-OT-S, 2" REDUCED PRESSURE BACKFLOW PREVENTER WITH A MODEL 909-AG AIR GAP DRAIN. INSTALL UNIT WITH CENTERLINE A MAXIMUM OF 4'-6" AFF. REFER TO DETAIL ON DRAWINGS.	2"	X	X	X
RPBP-2	REDUCED PRESSURE BACKFLOW PREVENTER: WATTS MODEL 909-OT-S, 1" REDUCED PRESSURE BACKFLOW PREVENTER WITH A MODEL 909-AG AIR GAP DRAIN. INSTALL UNIT WITH CENTERLINE A MAXIMUM OF 4'-6" AFF. REFER TO DETAIL ON DRAWINGS.	1"	X	X	X
WH-1	WATER HEATER (INSTANTANEOUS, 4.1KW): EEMAX MODEL SP4208, 4.1KW, 208V, SINGLE PHASE, 19.7 AMPS.	1/2"	1/2"	X	X
WH-2	WATER HEATER (INSTANTANEOUS, 4.1KW): EEMAX MODEL SP4208, 4.1KW, 208V, SINGLE PHASE, 19.7 AMPS.	1/2"	1/2"	X	X
WH-3	WATER HEATER (INSTANTANEOUS, 4.1KW): EEMAX MODEL SP4208, 4.1KW, 208V, SINGLE PHASE, 19.7 AMPS.	1/2"	1/2"	X	X
MS	MOP SINK : REGENCY MODEL "REGENCY 25" 25"x21"x12" (EXTERNAL DIMENSIONS) SERVICE BASIN. COMPLETE WITH CHICAGO MODEL 897-RCF CHROME PLATED SPOUT WITH VACUUM BREAKER, 3/4" HOSE THREAD OUTLET, PAIL HOOK. WALL SUPPORT, INTEGRAL STOPS, MODEL 369 2 1/2" METAL LEVER HANDLES AND 36" LENGTH OF THREADED HOSE. CONTRACTOR TO DETERMINE EXISTING CLEARANCES AT INSTALL LOCATION PRIOR TO PURCHASING TO ENSURE PROPER FIT.	1/2"	1/2"	3"	1 1/2"

1