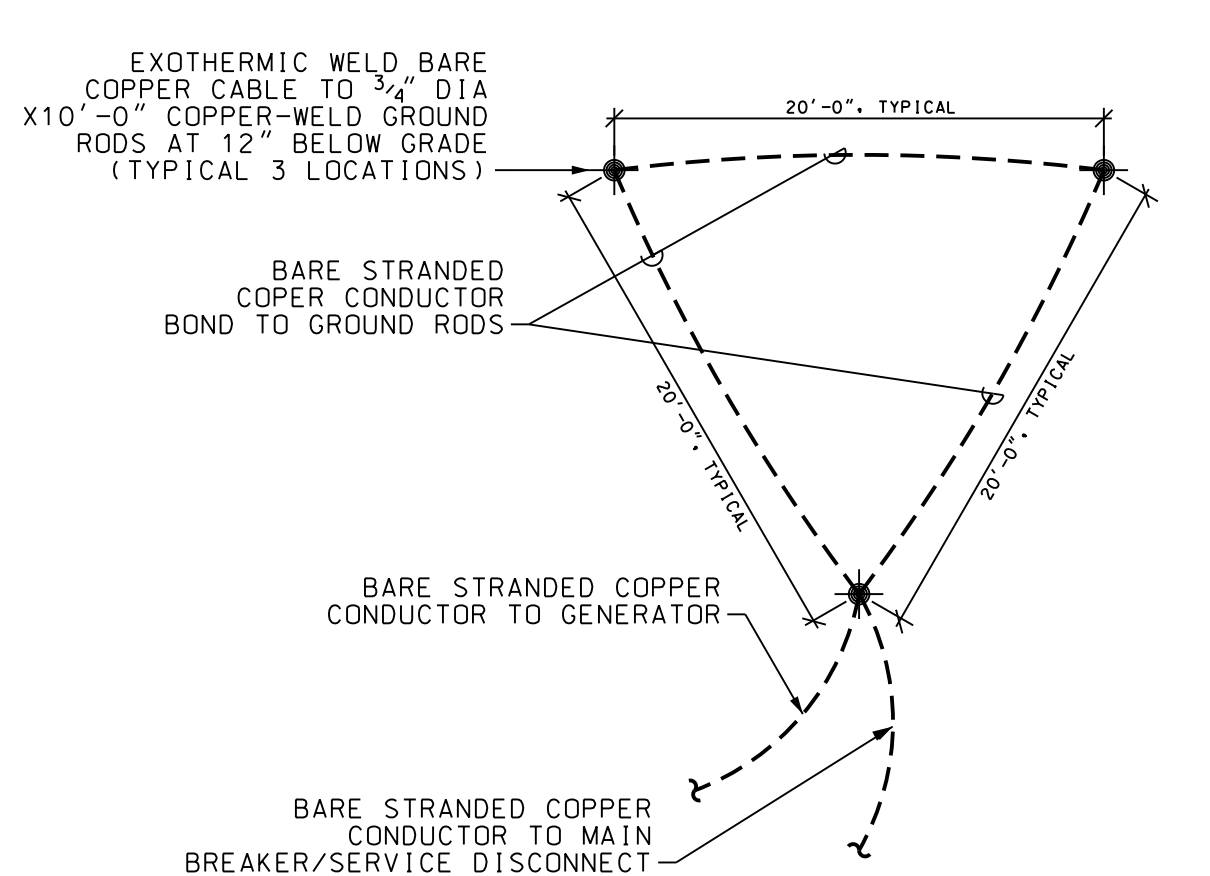


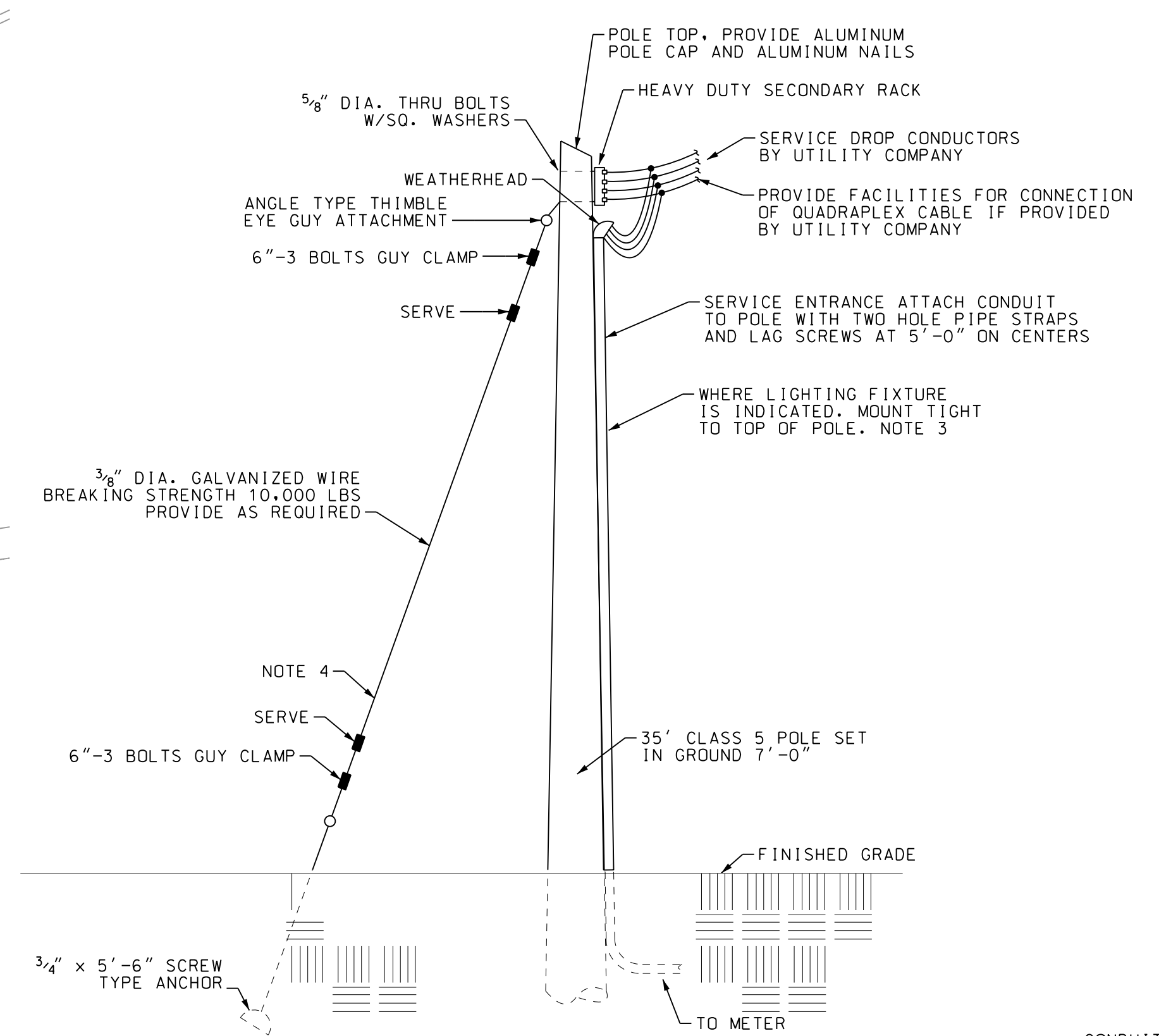
- LEGEND:**
- [ ] EQUIPMENT AS NOTED
  - [ ] CIRCUIT BREAKER
  - WP WEATHERPROOF
  - [ ] GROUND TO GROUND ROD SYSTEM, NOTE 2
  - GF GROUND FAULT CIRCUIT INTERRUPTER PROTECTION
  - S SINGLE POLE, 20 AMP, 277 VOLT TOGGLE SWITCH.
  - AIC INTERRUPTING CAPACITY IN AMPS
  - [ ] CONDUIT SYSTEM CONCEALED BELOW GRADE
  - [ ] AREA LIGHT MOUNTED TO SCADA POLE, 20' AFG UNLESS NOTED OTHERWISE, NOTE 3.
  - N.T.S. NOT TO SCALE
  - [ ] SURGE SUPPRESSION DEVICE (SPD), COORDINATE VOLTAGE ASCO MODEL 430-277Y-P-15-A-C-A-J-2 MTD TO SIDE OF DISTRIBUTION PANEL
  - [ ] GENERATOR EMERGENCY STOP
  - [ ] VARIABLE FREQUENCY DRIVE
  - [ ] GROUND ROD LOCATION

- NOTES:**
1. THE EXACT LOCATION OF THE METER AND SERVICE SHALL BE COORDINATED IN THE FIELD WITH THE UTILITY COMPANY AND WITH OTHER WORK ON THE PROJECT SITE. CONTACT TRI-COUNTY EMC - LEE MARSH, 478-986-8100
  2. FURNISH AND INSTALL THREE 10' X 3/4" DIA. GROUND ROUNDS, TRIAD/DELTA CONFIGURATION, WITH 20" SEPARATION, DRIVEN 12" BELOW GRADE. SERVICE GROUNDING SHALL BE BONDED AT THE ENCLOSED BREAKER AND AT THE GENERATOR. REFER TO DETAIL 2/E1.
  3. MOUNT AREA LIGHT ON 35' PRESSURE TREATED POLE, AIM TOWARDS THE WET WELL. PROVIDE LITHONIA TD02-LED-P1-50K-120-PER-DNA-M4-OMA.
  4. PROVIDE YELLOW FIBERGLASS GUARD ON SERVICE POLE BACK GUY.
  5. POSITION ELECTRICAL EQUIPMENT SO THAT ALARM LIGHT CAN BE SEEN FROM THE NEAREST ROAD.
  6. ALL CONDUITS INSTALLED EXPOSED TO ATMOSPHERE SHALL BE RIGID ALUMINUM. ALL CONDUITS INSTALLED BELOW GRADE SHALL BE SCHEDULE 80 PVC. ALL ELBOWS AND STUB-UPS TO BE RIGID ALUMINUM.
  7. COAT ALL STRUCTURAL SUPPORTS AND RGS CONDUITS ENCASED IN CONCRETE WITH TWO COATS OF SCOTCHRAP PIPE PRIMER AND TWO OVERLAPPING LAYERS OF SCOTCHRAP 51 TAPE, APPLY FROM 6" ABOVE GRADE TO BOTTOM OF STRUCTURAL MEMBER OR TRANSITION TO SCH-80 PVC. ALLOW FOR PRIMER TO DRY BEFORE APPLICATION OF SECOND COAT AND/OR TAPE.
  8. ALL ATTACHMENT HARDWARE, BOLTS, NUTS, WASHERS, ETC. SHALL BE STAINLESS STEEL. PROVIDE FIBER WASHER BETWEEN DISSIMILAR METAL COMPONENTS AND ENCLOSURES. THE EQUIPMENT FRAME SHALL BE FIELD ASSEMBLED. ALL CONNECTIONS SHALL BE BOLTED WITH STAINLESS STEEL FASTENERS.
  9. EQUIPMENT AND INSTALLATION SHALL CONFORM TO JONES COUNTY, GEORGIA, WASTE WATER TREATMENT UTILITY CONSTRUCTION STANDARDS AND REQUIREMENTS.
  10. CIRCUIT BREAKER AND SWITCH OPERATING HANDLES SHALL BE A MAXIMUM OF 66" ABOVE FINISHED GRADE. LOCATE ENCLOSED BREAKER, AUTOMATIC TRANSFER SWITCH AND SCADA PANEL WHERE INDICATED.
  11. 2" SCH. 80 PVC STUBBED INTO THE WET WELL.
  12. PROVIDE IN WET WELL A STAINLESS STEEL CABLE SUPPORT BRACKET FOR THE PUMP MOTOR, FLOAT, AND TRANSDUCER CABLES. PROVIDE NON-METALLIC ARAMID FIBER, HEAVY DUTY, SINGLE WEAVE, SINGLE EYE CLOSED MESH SUPPORT STRIP. FURNISH PRODUCTS OF HUBBELL-KELLEMS OR SLINGCO.
  13. PROVIDE CROUSE-HINDS ES SERIES SEALING HUBS, SEALING LOCKNUTS, BUSHINGS AND TSC EPOXY SEALING COMPOUND FOR ALL CONDUITS FROM THE WET WELL TO ENCLOSURES (I.E. CONTROL PANEL, SEPARATELY MOUNTED VFD'S).
  14. DISCONNECT SWITCHES FOR PUMP MOTORS SHALL BE EQUIPPED WITH A NORMALLY OPEN AUXILIARY CONTACT. THE AUXILIARY CONTACT SHALL BE WIRED IN THE CONTROL VOLTAGE STOP/START CIRCUIT ON THE DRIVE. THE AUXILIARY CONTACT SHALL BE EARLY BREAK SO THAT THE VFD CONTROL CIRCUIT DROPS OUT BEFORE THE DISCONNECT SWITCH OPENS THE POWER CIRCUIT, AND MAKE SURE THAT THE DISCONNECT SWITCH CLOSING THE POWER CIRCUIT BEFORE THE VFD CONTROL CIRCUIT ON THE DRIVE IS CLOSED.
  15. 12"x12"x6" NEMA 4X STAINLESS STEEL JUNCTION BOX WITH ALUMINUM BACK PLATE AND TERMINAL STRIPS AS REQUIRED. FURNISH WITH QUARTER TURN LATCH. PROVIDE HAMMOND MANUFACTURING ECLIPSE SERIES PR HOFFMAN/PENTAIR CONCEPT SERIES.
  16. THE CONTRACTOR SHALL PROVIDE A COMPLETE FESTOON CABLE SYSTEM, TO PROVIDE POWER TO THE MOTORIZED TROLLEY/HOIST (1/2HP, 115V, 1PH) THE SYSTEM CONSISTS OF STAINLESS STEEL C-RAIL, STAINLESS STEEL CABLE, TROLLEYS, FESTOON CABLE (SUNLIGHT RESISTANT/OUTSIDE INSTALLATION RATED). THE C-RAIL SHALL BE MOUNTED TO THE HOIST FRAME ADJACENT TO THE HOIST SUPPORT BEAM. COORDINATE CABLE QUANTITY, C-CHANNEL LENGTH AND TROLLEY QUANTITY WITH BEAM LENGTH AS RECOMMENDED BY CONDUCTIX. INSTALL AND SUPPORT IN ACCORDANCE WITH THE MANUFACTURER'S REQUIREMENTS. PROVIDE PRODUCTS OF CONDUCTIX/WAMPFLER, NO SUBSTITUTIONS. CONTACT JERRY KOETTING, SOUTHEAST DISTRICT SALES, CONDUCTIX/WAMPFLER, 170-330-4608.
  17. THE SCADA SYSTEM SHALL BE PROVIDED BY J.K. DUREN CO., ROSWELL GA. CONTACT KEN DUREN AT (770) 992-5405. THE SCADA PANEL BE MOUNTED ON THE EQUIPMENT FRAME.
  18. THE CONTRACTOR SHALL PROVIDE, FURNISH AND EXTEND:
    - 2" C W/30 NO.14, 1 NO.14(G) FROM THE SCADA PANEL TO THE PUMP CONTROL PANEL.
    - 1" C W/6 T.S. PAIR CABLES (BELDEN 5240F1) 16 AWG FROM THE SCADA PANEL TO THE PUMP CONTROL PANEL.
    - 2" C WITH SCADA ANTENNA CABLE FROM THE SCADA PANEL TO THE SCADA ANTENNA MAST/POLE.
  19. THE CONTRACTOR SHALL HIRE J.K. DUREN CO. TO PERFORM A RADIO PATH STUDY OF EACH SITE TO DETERMINE THE REQUIRED POLE FOR THE NECESSARY ANTENNA ELEVATION. FOR BIDDING PURPOSES, THE CONTRACTOR SHALL PROVIDE AN ALLOWANCE FOR A 40 CLASS 5 PENTA PRESSURE TREATED WOOD POLE TO BE INSTALLED WHERE SHOWN. FINAL REQUIRED POLE SIZE SHALL BE DETERMINED AND A CHANGE ORDER/ CREDIT SUBMITTED/ISSUED TO THE OWNER FOR THE DIFFERENCE IN THE REQUIRED POLE.
  20. 4 NEMA 4X STAINLESS STEEL PANEL MOUNTED AIR CONDITIONER UNITS, STRATUS T410-060-46-4X. THE PANEL FABRICATION SHOP SHALL DETERMINE THE THERMAL LOAD OF THE CONTROL PANEL AND PROVIDE THE NECESSARY COOLING CAPACITY. THE MANUFACTURER LISTED IS TO INDICATE THE QUALITY AND PERFORMANCE REQUIRED; OTHER MANUFACTURERS WITH EQUAL QUALITY OF CONSTRUCTION WILL BE ACCEPTABLE.

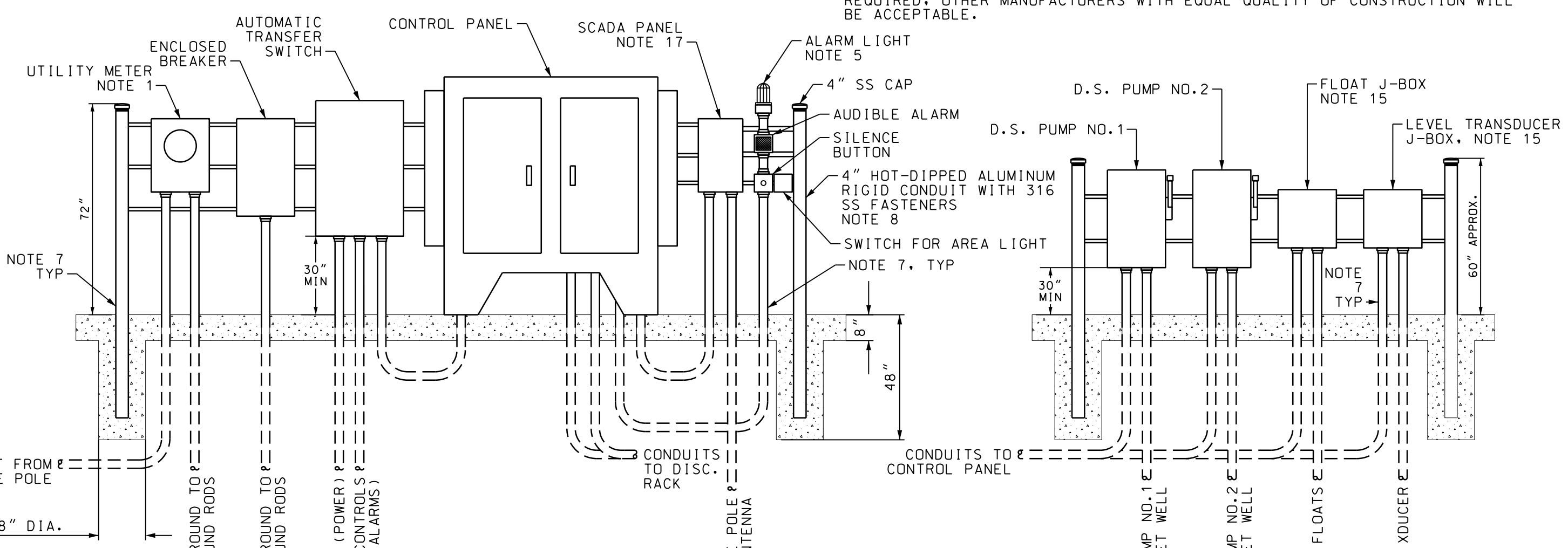
**1 SITE PLAN - ELECTRICAL**  
E1 SCALE: 1" = 10' - 0"



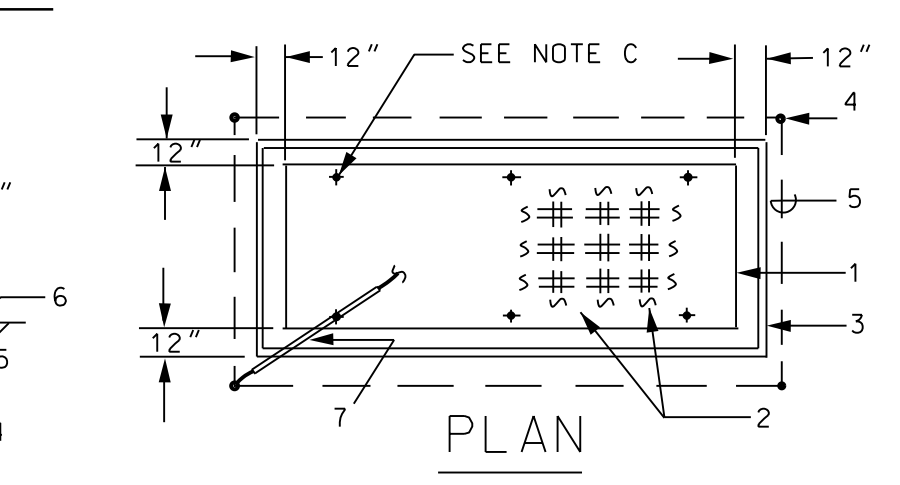
**2 SECONDARY ELECTRICAL GROUNDING**  
E1 NOT TO SCALE



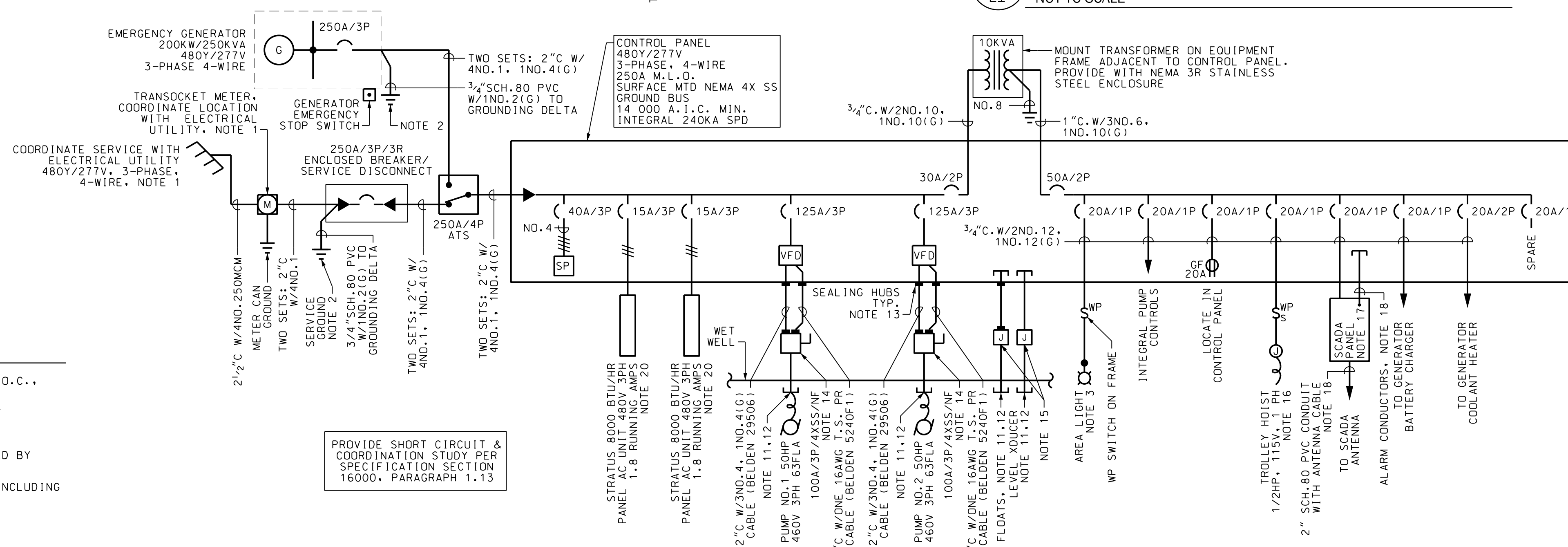
**3 SERVICE POLE DETAIL**  
E1 NOT TO SCALE



**5 PUMP STATION CONTROL PANEL ELEVATION**  
E1 NOT TO SCALE



**4 EMERGENCY GENERATOR FOUNDATION DETAIL**  
E1 NOT TO SCALE



**6 ONE-LINE DIAGRAM**  
E1 NOT TO SCALE

REVISIONS:


**GRISWOLDVILLE INDUSTRIAL PARK**  
**SANITARY SEWER FORCEMAIN**  
FOR THE  
**JONES COUNTY BOARD OF COMMISSIONERS**  
JONES COUNTY, GA

**INGRAM & ASSOCIATES**  
Consulting Engineers, LLC  
332 New Street  
Macon, Georgia 31201  
(770) 478-745-5996  
(770) 478-742-4690  
www.ingrameng.com

PROJ. #: 1160-064-01  
DWG: Site Plan  
DSGN BY: CC  
CAD BY: AL  
CHECKED BY: CC  
DATE: JANUARY 2020  
SHEET #: E1 OF