



## ADDENDUM NO. 1

**Date:** 11 MAR 2022

**SDG Project No.:** 21-19 Colonial Hotel Streetscape Enhancements

The Bidding Documents are modified as follows:

### **PART 1.00 DRAWINGS**

#### **1.01 SHEET SD-2:**

- A. Foundation drains at planters in front of Colonial Hotel to tie into new catch basin CB6; see exact location on sheet C-2.

#### **1.02 SHEET E-13:**

- B. OMIT purchase and installation of (2) CT4023 electric car charging stations from G.C. scope of work. G.C. to install electrical requirements to allow for future installation of electric car charging stations.

### **PART 2.00 PROJECT MANUAL**

**NO ITEMS INCLUDED**

### **PART 3.00 ADDENDA**

**NO ITEMS INCLUDED**

### **PART 4.00 APPROVED MANUFACTURERS**

**NO ITEMS INCLUDED**

### **PART 5.00 ATTACHMENTS**

#### **5.01 Drawings**

- A. Sheet ADD1-1A dated 11 MAR 2022, 24"x36" (Revised sheet SD-1, added demolition notes)
- B. Sheet ADD1-2A dated 11 MAR 2022, 24"x36" (Revised sheet SD-2, added concrete apron & asphalt patching)

### **PART 6.00 GENERAL CLARIFICATIONS**

**6.01:** G.C. and all sub-contractors to pay standard permit fees to the city.

**6.02:** G.C. to provide "lull" to off load and mount Owner provided clock & post.

**END OF ADDENDUM NO. 1**

**KEYNOTES:**

- ① EXISTING CURB TO REMAIN BY G.C.
- ② EXISTING CURB TO BE REMOVED BY G.C.
- ③ EXISTING PAVES TO BE REMOVED BY G.C.
- ④ EXISTING CONCRETE SIDEWALK TO BE REMOVED BY G.C.
- ⑤ EXISTING TRAFFIC SIGNALS TO BE REMOVED BY G.C. AND GIVEN TO CITY. PROVIDE TEMPORARY SIGNALS DURING CONSTRUCTION. CITY WILL INSTALL NEW PERMANENT TRAFFIC SIGNALS AT END OF PROJECT.
- ⑥ REMOVE CONCRETE APPROX DRIVE IN ITS ENTIRETY BY G.C.
- ⑦ SAW CUT AND REMOVE EXISTING ASPHALT AND BASE IN ITS ENTIRETY BY G.C.
- ⑧ G.C. TO REMOVE EXISTING CHAIN AND POSTS BARRIER BETWEEN PARKING LOT AND SIDEWALK. G.C. TO SAW CUT 3'-0" WIDE STRIP OF THE EXISTING ASPHALT AND REPLACE WITH NEW ASPHALT AFTER REMOVAL OF POSTS AND CHAINS.

GEORGIA 811  
 UTILITIES PROTECTION CENTER, INC.  
 IF YOU DIG IN GEORGIA  
 DIAL 1-800-282-7411.  
 WWW.GAUPC.COM  
 THREE WORKING DAYS BEFORE YOU DIG.  
 ALSO VERIFY ALL UTILITIES WITH CITY OF LAGRANGE  
 THREE WORKING DAYS BEFORE YOU DIG.

BASE BID:  
 THE CITY OF LAGRANGE WILL FINISH GRADE,  
 PROVIDE AND INSTALL 6" G.A.B., AND PROVIDE  
 AND INSTALL ALL CONCRETE PAVERS AS  
 CALLED FOR ON THE DRAWINGS.

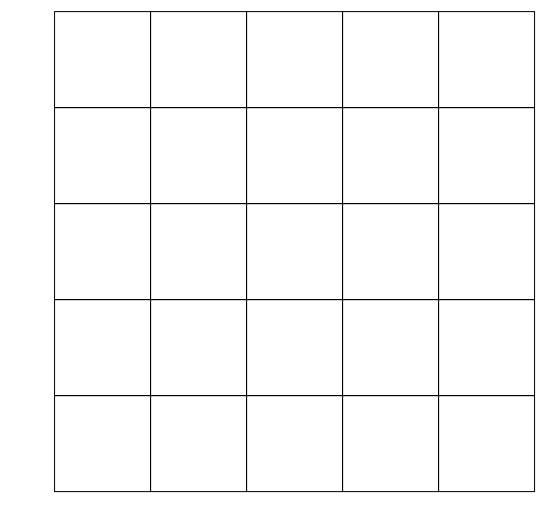


SMITH DESIGN GROUP, INC.  
 206 WEST HARALSON STREET  
 LAGRANGE, GEORGIA 30240  
 706-882-5511  
 www.SDGarch.net

**GENERAL NOTES**

- A. CITY TO REMOVE AND RELOCATE POWER POLE
- B. EXISTING ELECTRICAL LIGHT POSTS WILL BE REMOVED AND RELOCATED BY CITY.
- C. EXISTING FIRE HYDRANT WILL BE REMOVED AND RELOCATED BY CITY.
- D. TRUNCATED PAVERS TO BE PROVIDED AND INSTALLED BY G.C. AS PART OF ADD. ART. 1. BASE BID ALL PAVES REMOVED AND INSTALLED BY CITY.

5' X 5' GRID @ 1" = 10'-0"

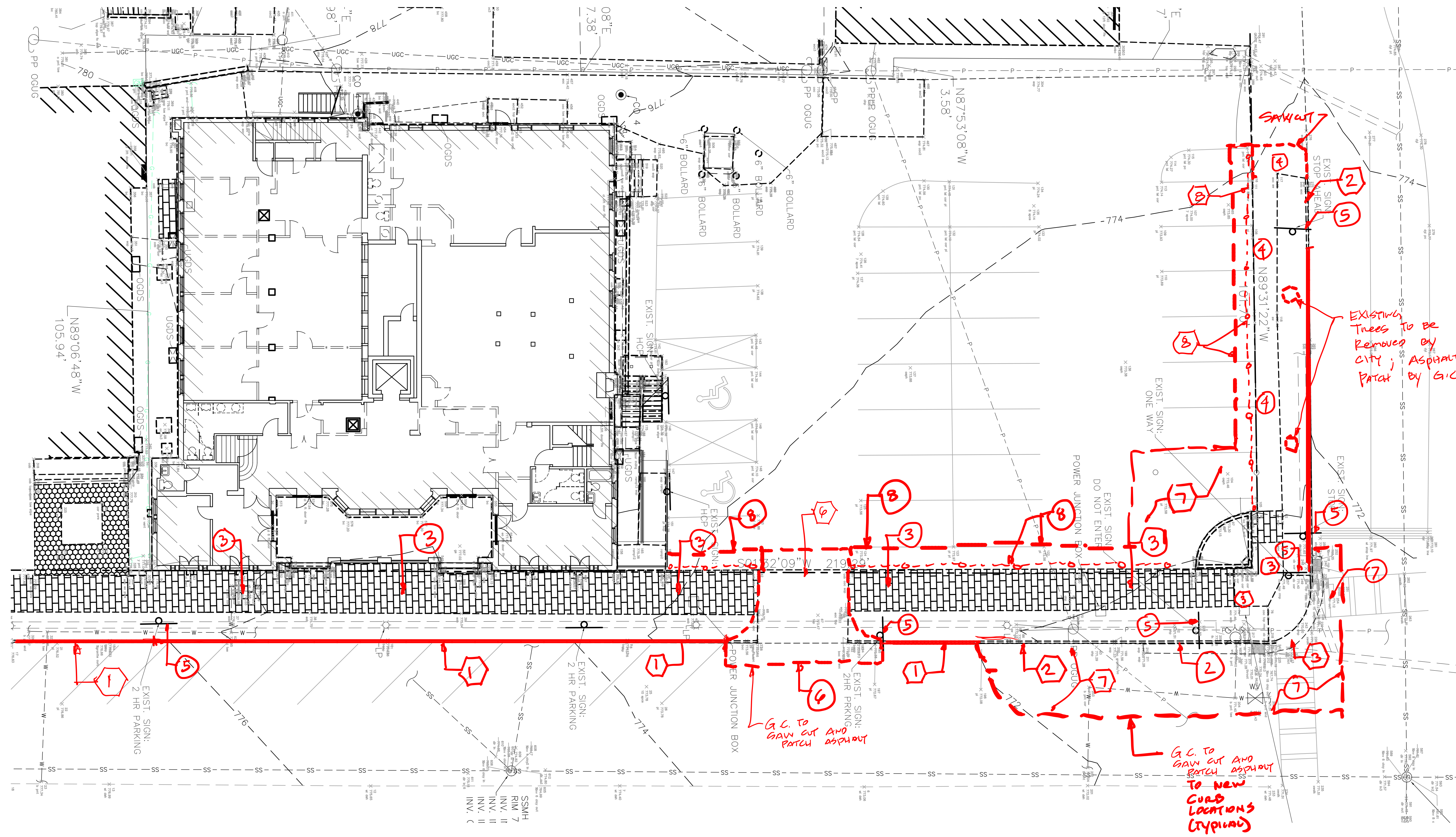


REVISIONS	
DATE	DESCRIPTION

PROJECT:  
**STREETSCAPE ENHANCEMENTS THE COLONIAL BUILDING**  
 WEST HARALSON ST / RIDLEY AVE  
 LAGRANGE, GEORGIA

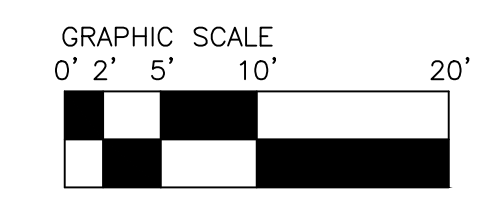
TITLE:  
**SITE PLAN EXISTING**

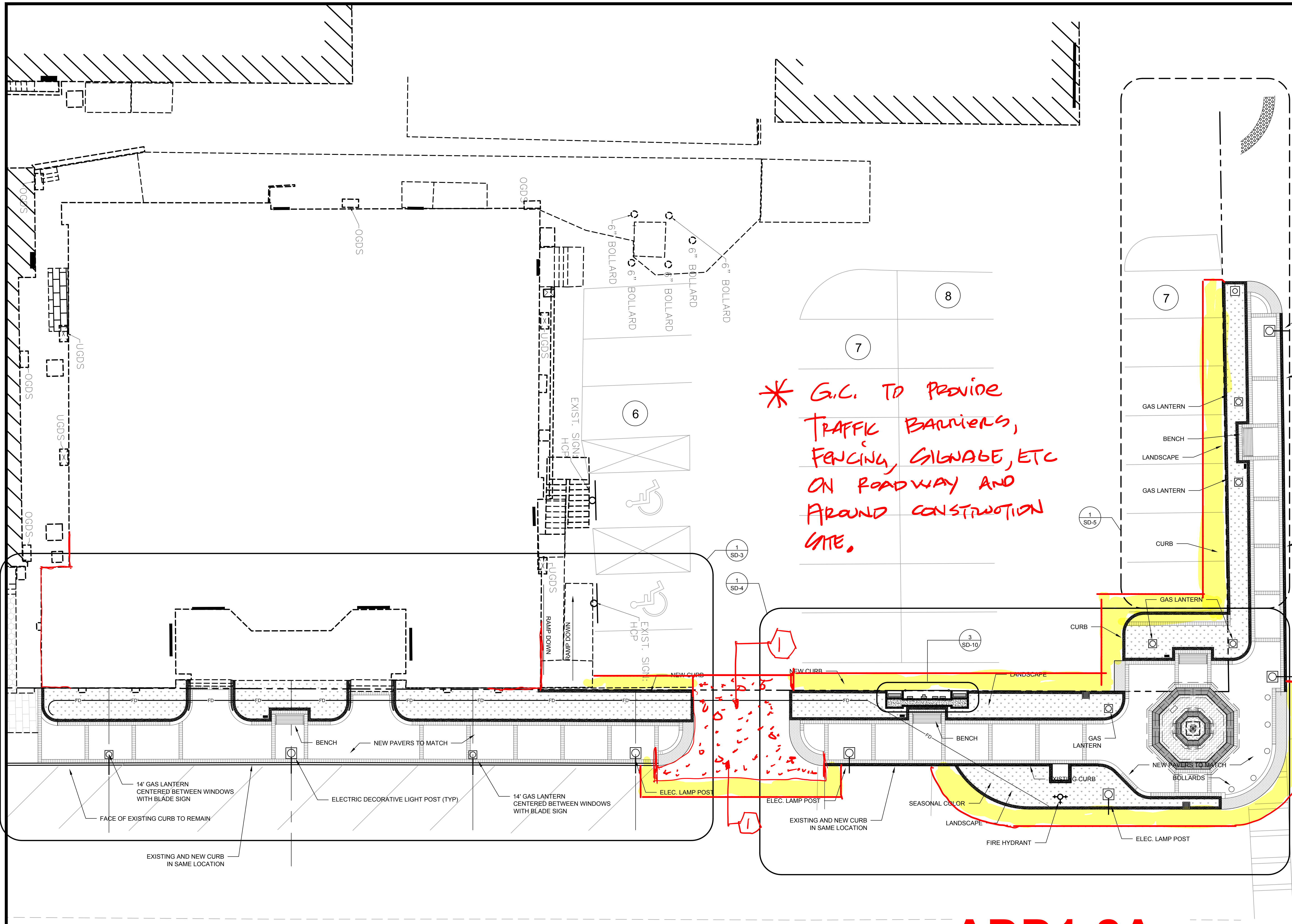
MODIFIED DATE:	JOB NO: <b>21-19</b>
ISSUED DATE: 15 FEB 2022	SHEET: <b>SD-1</b>



**1 SITE PLAN - EXISTING / DEMOLITION**  
 SCALE: 1" = 10'-0"

**ADD1-1A** 11 MARCH 2022





\* G.C. TO PROVIDE TRAFFIC BARRIERS, FENCING, GILGAGE, ETC ON ROADWAY AND AROUND CONSTRUCTION GATE.



SMITH DESIGN GROUP, INC.  
 206 WEST HARALSON STREET  
 LAGRANGE, GEORGIA 30240  
 706-882-5511  
 www.SDGarch.net

LEGEND  
 FD 6" PERFORATED FOUNDATION DRAIN IN SOCK. SLOPE TO DRAIN TO NEW CURB INLET.

G.C. TO SAWCUT EXISTING ASPHALT AND THEN PATCH BACK WITH NEW 2" GAB - 3" ASPHALT

14' ELECTRIC POST  
 EXISTING AND NEW CURB IN SAME LOCATION  
 KEYNOTES  
 NEW 6" THICK 4,000 PSI, #4 E.W. @ 18" O.C. CONCRETE APRON INSTALLED BY G.C.

REVISIONS	
DATE	DESCRIPTION

PROJECT:  
**STREETSCAPE ENHANCEMENTS THE COLONIAL BUILDING**  
 WEST HARALSON ST / RIDLEY AVE  
 LAGRANGE, GEORGIA

TITLE:  
**SITE PLAN PROPOSED**

MODIFIED DATE:	JOB NO: 21-19
ISSUED DATE: 15 FEB 2022	SHEET: SD-2

1 SD-2 SITE PLAN - PROPOSED  
 SCALE: 1/8" = 1'-0"

**ADD1-2A** 11 MARCH 2022