

William Prokop  
CITY MANAGER  
843-525-7070



Jay Phillips  
Procurement manager  
(843) 525-7071

**CITY OF BEAUFORT**  
1911 Boundary Street  
BEAUFORT, SOUTH CAROLINA 29902

**RFQ 2021-102  
ARCHITECTURAL AND ENGINEERING SERVICES  
FOR THE CARNEGIE BUILDING WINDOWS RESTORATION  
ADDENDUM 4  
CARNEGIE BUILDING WINDOWS SCHEDULE**

This Addendum No. 4 to RFQ 2021 - 102 Architectural and Engineering Services for the Carnegie Library Windows Restoration is issued by the City of Beaufort Finance Department. Except as modified by this Addendum No. 4, all areas of the RFQ not specifically mentioned in or affected by this Addendum shall remain unchanged.

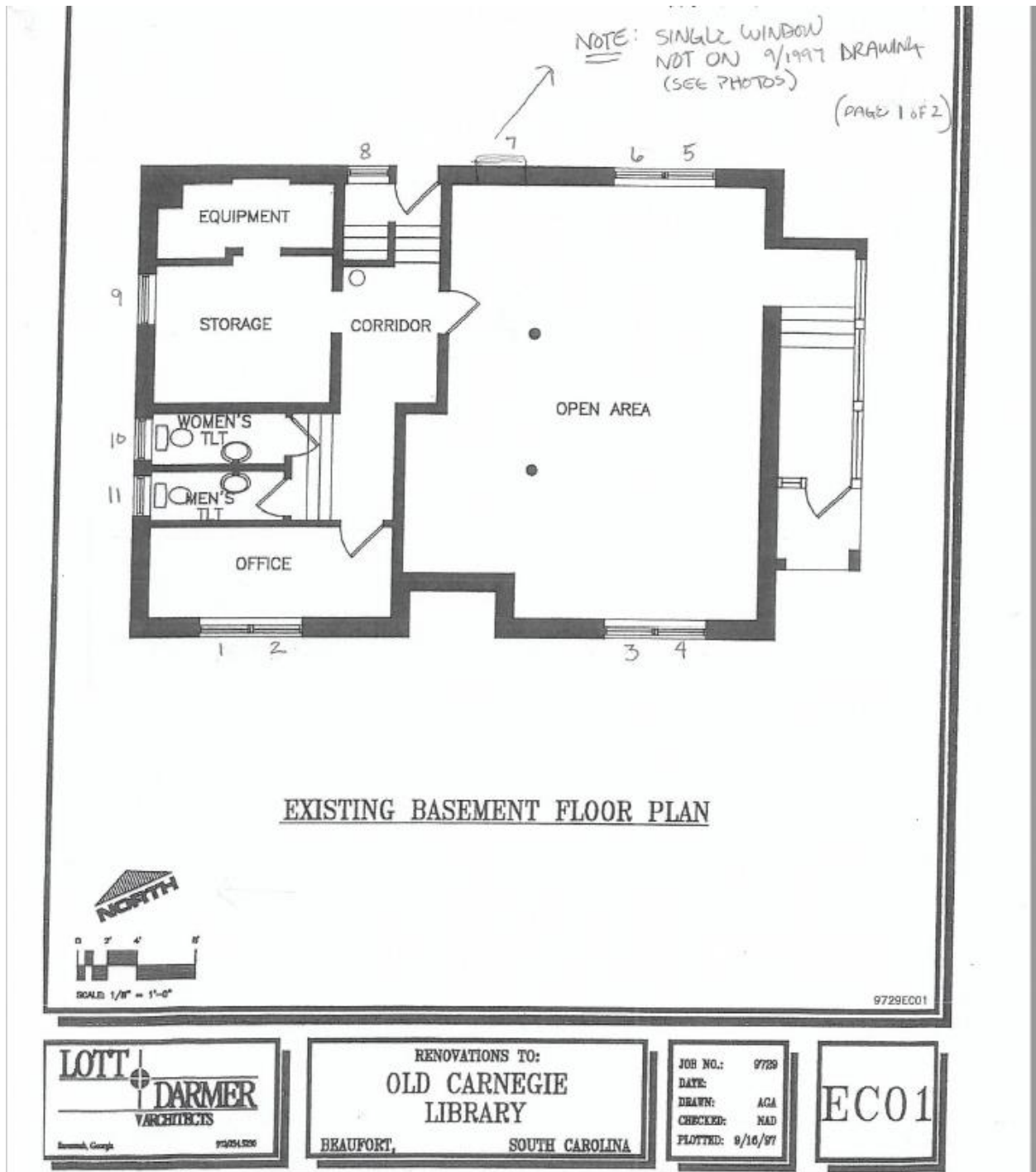
**See below: Carnegie Building Floor Plan and Schedule of Windows**

William Prokop  
CITY MANAGER  
843-525-7070



Jay Phillips  
Procurement manager  
(843) 525-7071

CITY OF BEAUFORT  
1911 Boundary Street  
BEAUFORT, SOUTH CAROLINA 29902

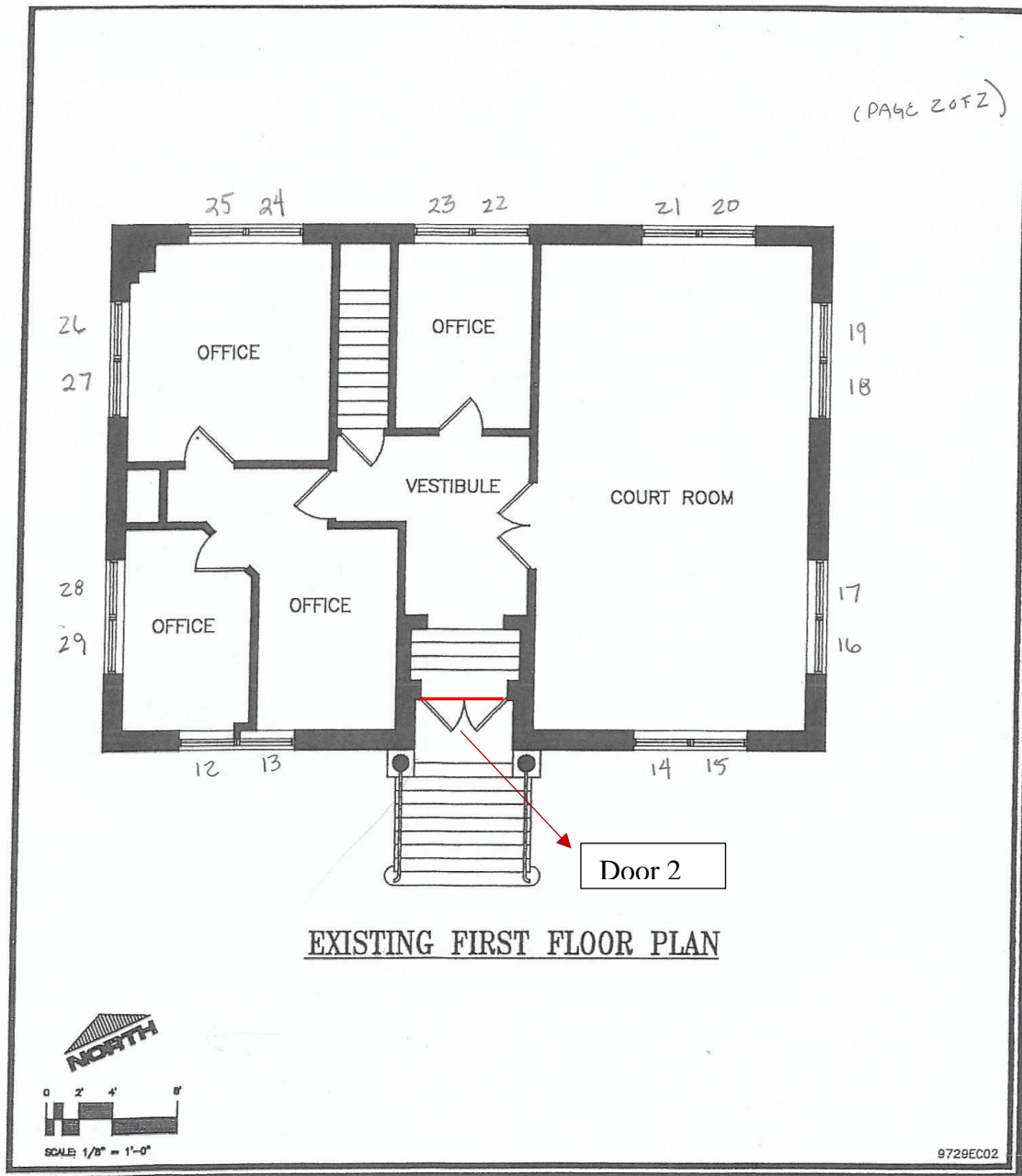


William Prokop  
CITY MANAGER  
843-525-7070



Jay Phillips  
Procurement manager  
(843) 525-7071

CITY OF BEAUFORT  
1911 Boundary Street  
BEAUFORT, SOUTH CAROLINA 29902



**LOTT** | **DARMER**  
ARCHITECTS

Beaufort, Georgia 29924-5230

RENOVATIONS TO:  
**OLD CARNEGIE  
LIBRARY**

BEAUFORT, SOUTH CAROLINA

JOB NO.: 9729  
DATE:  
DRAWN: AGA  
CHECKED: NAD  
PLOTTED: 8/18/97

EC02

William Prokop  
CITY MANAGER  
843-525-7070



Jay Phillips  
Procurement manager  
(843) 525-7071

**CITY OF BEAUFORT**  
1911 Boundary Street  
BEAUFORT, SOUTH CAROLINA 29902

## **Carnegie Building Window Schedule**

### **South Elevation:**

- (4) 36" x 56", 9 over 1, double windows installed in pairs (first floor) (#12, 13, 14, 15)
- (4) 36" x 42", 6 over 6, double windows installed in pairs (basement, located at ground level) (#1, 2, 3, 4)
- (1) 5' x 10' double door located on first floor (Door 2)

### **North Elevation:**

- (6) 36" x 56", 9 over 1, double windows installed in pairs (first floor) (#20, 21, 22, 23, 24, 25)
- (3) 36" x 42", 6 over 6, double windows installed in 1 pair + 1 alone (basement, located at ground level)  
(#5, 6, 7)
- (1) 24" x 24", 4 over 4 double windows (basement, located at ground level) (#8)
- (1) 3' x 5.5' Single Door (basement, located at ground level) (Door 1)

### **East Elevation:**

- (4) 36" x 56", 9 over 1, double windows, installed in pairs (first floor) (#16, 17, 18, 19)

### **West Elevation:**

- (4) 36" x 36", single 9 panes, double windows, installed in pairs (first floor) (#26, 27, 28, 29)
- (2) 24" x 42", 4 over 4, double windows (basement, located at ground level) (#10, 11)
- (1) 36" x 42", 6 over 6 double windows (basement, located at ground level) (#9)