

Roane County Purchasing Department
200 East Race Street, Suite #3
Kingston, Tennessee 37763
Phone 865-376-4317 • Fax 865-376-4318

**ADDENDUM #1
BID 2018-09-171
AMBULANCE**

TO: All Potential Bidders

This addendum forms part of the Bid Documents. It supplements and modifies them as follows:

ITEM #1 – ADDITIONAL INFORMATION

- Drawings attached.

Please return this addendum to the Purchasing Department in the bid envelope. If your bid has already been sent and this addendum does not pertain to bid pricing, you may return it via facsimile.

ACKNOWLEDGMENT OF ADDENDUM

The undersigned acknowledges receipt of Addendum #1 – Bid #2018-09-171.

Name

Title

Dealer:

Approved By:

Date:

Customer:

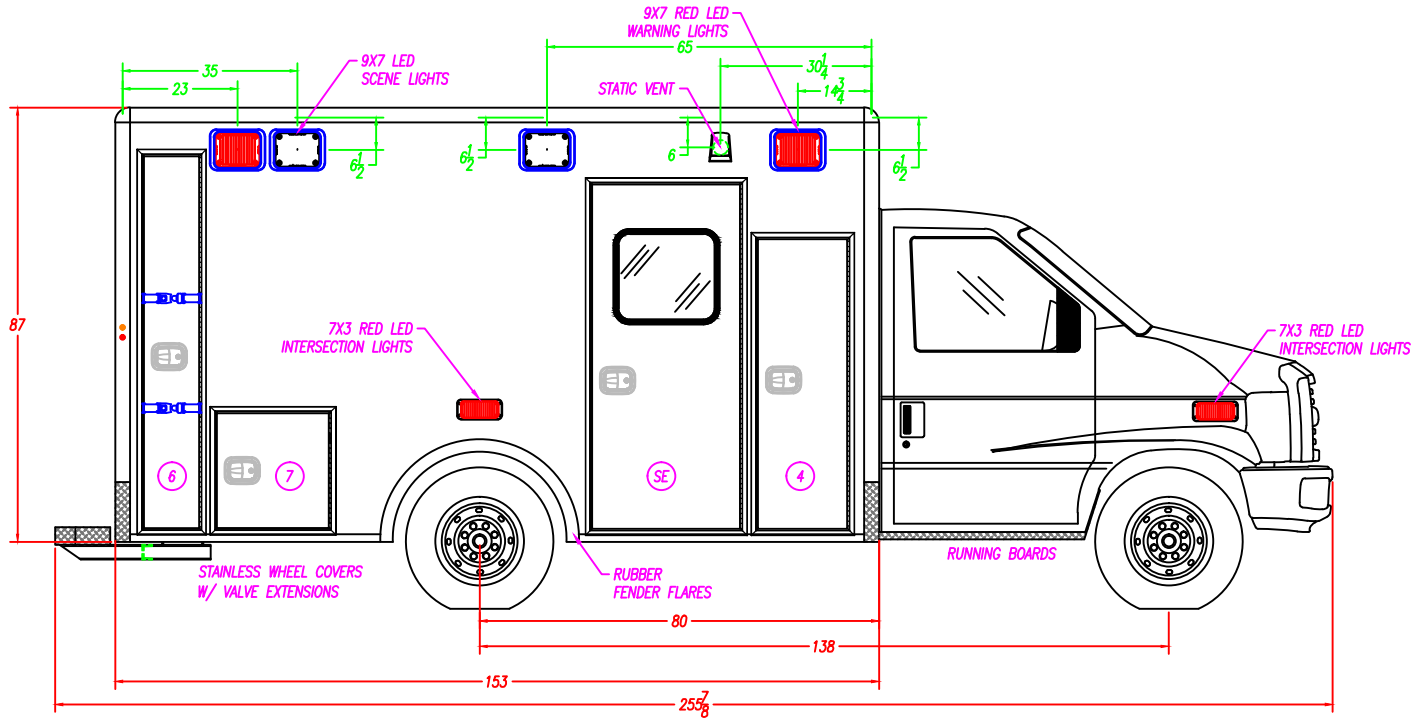
Sheet

A

ALL WARNING, SCENE, AND TAIL LIGHTS TO HAVE CHROME BEZELS

ALL GREEN DIMENSIONS ARE TAKEN FROM EDGE OF WALL

SURFACE PRIOR TO CORNER CAP BEING APPLIED



COMPARTMENT SIZES

NOTE: THE DIMENSIONS BELOW ARE ROUGH OPENINGS, SUBTRACT 1/4" FOR TUB SIZE

COMPARTMENT & ENTRY DOORS

COMPARTMENT TUBS

NO.	COMPARTMENT TYPE	WIDTH	HEIGHT	DEPTH
4	ALS/BATTERY COMPARTMENT	19 3/8"	15 1/2"	17 1/2"
6	BACKBOARD STORAGE COMPARTMENT	12 1/2"	75 3/8"	20 1/4"
7	OPTIONAL STORAGE COMPARTMENT	23 1/2"	24"	14"

NO.	PART NUMBER	NO.	PARTNUMBER
4	71-A10910	SE	71-A10908
6	71-A11034	-	----

NO.	PART NUMBER	NO.	PARTNUMBER
4	41-101372	-	----
6	41-101022	-	----
7	41-101150	-	----

COMPARTMENT / ENTRY DOOR SIZES

DESCRIPTION: CURB SIDE EXTERIOR		
DRAWN BY:	DATE CREATED:	SCALE: 5/16"=1'
REVISED BY:	DATE REVISED:	REVISION:

NO.	COMPARTMENT / ENTRY DOOR TYPE	WIDTH	HEIGHT
4	ALS DOOR	18"	58 1/6"
6	BACKBOARD COMPARTMENT DOOR	11 3/8"	74 3/8"
SE	SIDE ENTRY DOOR	29 3/4"	69 1/6"

Note: Drawings are for reference only, measurements may vary from actual product.

Dealer:

Approved By:

Date:

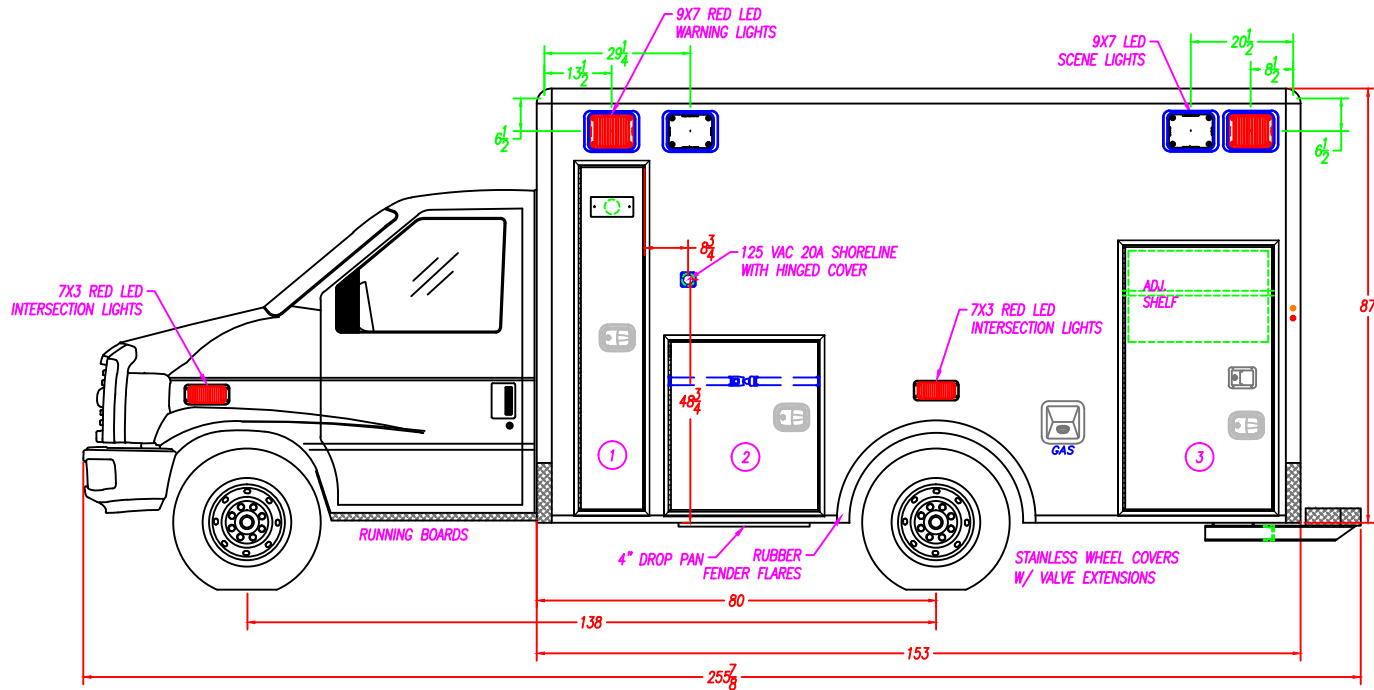
Customer:

Sheet

B

ALL WARNING, SCENE, AND TAIL LIGHTS TO HAVE CHROME BEZELS

ALL GREEN DIMENSIONS ARE TAKEN FROM EDGE OF WALL SURFACE PRIOR TO CORNER CAP BEING APPLIED



COMPARTMENT SIZES

NOTE: THE DIMENSIONS BELOW ARE ROUGH OPENINGS, SUBTRACT 1/4" FOR TUB SIZE

COMPARTMENT & ENTRY DOORS

COMPARTMENT TUBS

NO.	COMPARTMENT TYPE	WIDTH	HEIGHT	DEPTH
1	O2 STORAGE COMPARTMENT	13 3/4"	69 3/4"	15 3/4"
2	MID BODY STORAGE COMPARTMENT	30 3/4"	38"	13 1/4"
3	REAR STORAGE COMPARTMENT	30 3/4"	53 1/4"	18 1/2"
---	---	---	---	---

NO.	PART NUMBER	NO.	PARTNUMBER
1	71-101524	-	---
2	71-101271	-	---
3	71-101424	-	---

NO.	PART NUMBER	NO.	PARTNUMBER
1	41-101235	-	---
2	41-101227	-	---
3	41-101245	-	---

COMPARTMENT / ENTRY DOOR SIZES

NO.	COMPARTMENT / ENTRY DOOR TYPE	WIDTH	HEIGHT
1	O2 STORAGE COMPARTMENT DOOR	12 3/16"	68 9/16"
2	MID BODY STORAGE COMPARTMENT DOOR	29 3/16"	37 1/8"
3	REAR STORAGE COMPARTMENT DOOR	29 3/16"	52 3/16"
---	---	---	---

DESCRIPTION: STREET SIDE EXTERIOR

DRAWN BY: _____ DATE CREATED: _____ SCALE: 5/16"=1'

REVISED BY: _____ DATE REVISED: _____ REVISION: _____

Note: Drawings are for reference only, measurements may vary from actual product.

Dealer:

Approved By:

Date:

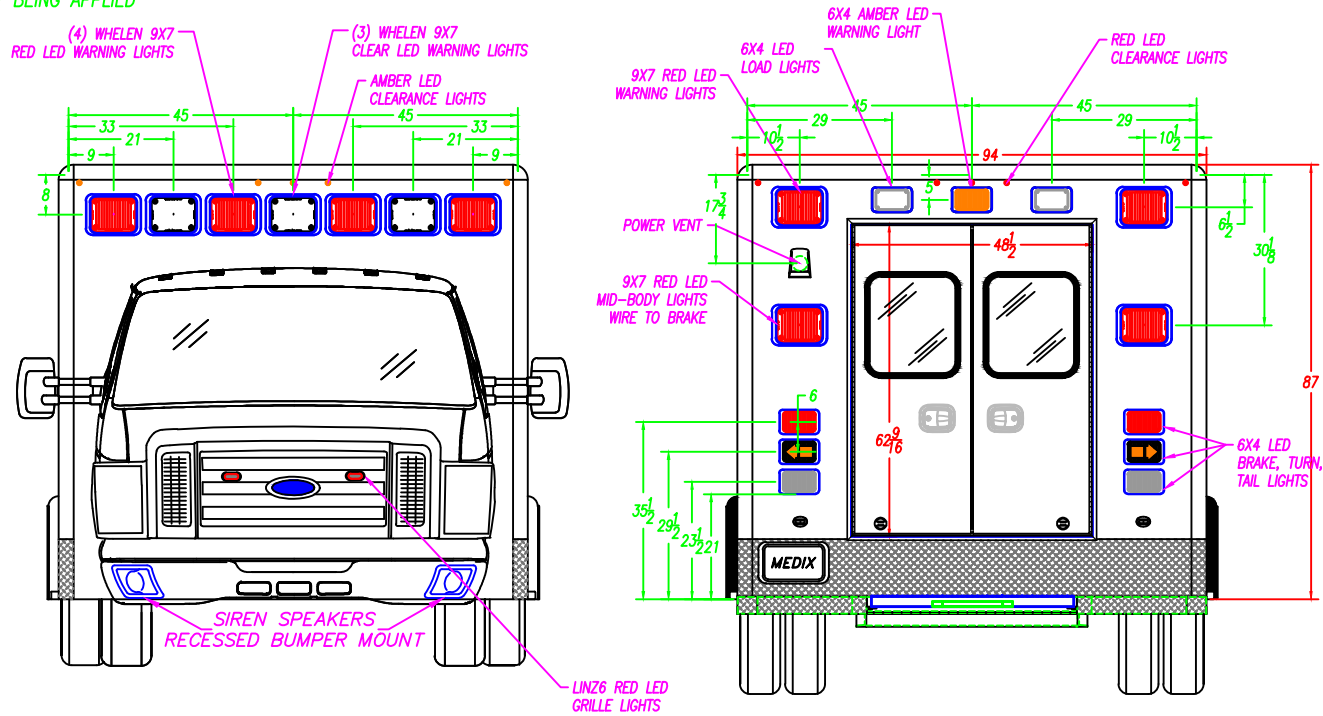
Customer:

Sheet

C

ALL WARNING, SCENE, AND TAIL LIGHTS TO HAVE CHROME BEZELS

ALL GREEN DIMENSIONS ARE TAKEN FROM EDGE OF WALL SURFACE PRIOR TO CORNER CAP BEING APPLIED



REAR ENTRY DOOR SIZES

NO.	WIDTH	HEIGHT	PART NUMBER
R1	---	---	---
R2	---	---	---

DESCRIPTION: FRONT & REAR EXTERIOR		
DRAWN BY:	DATE CREATED:	SCALE: 5/16"=1'
REVISED BY:	DATE REVISED:	REVISION:

Note: Drawings are for reference only, measurements may vary from actual product.

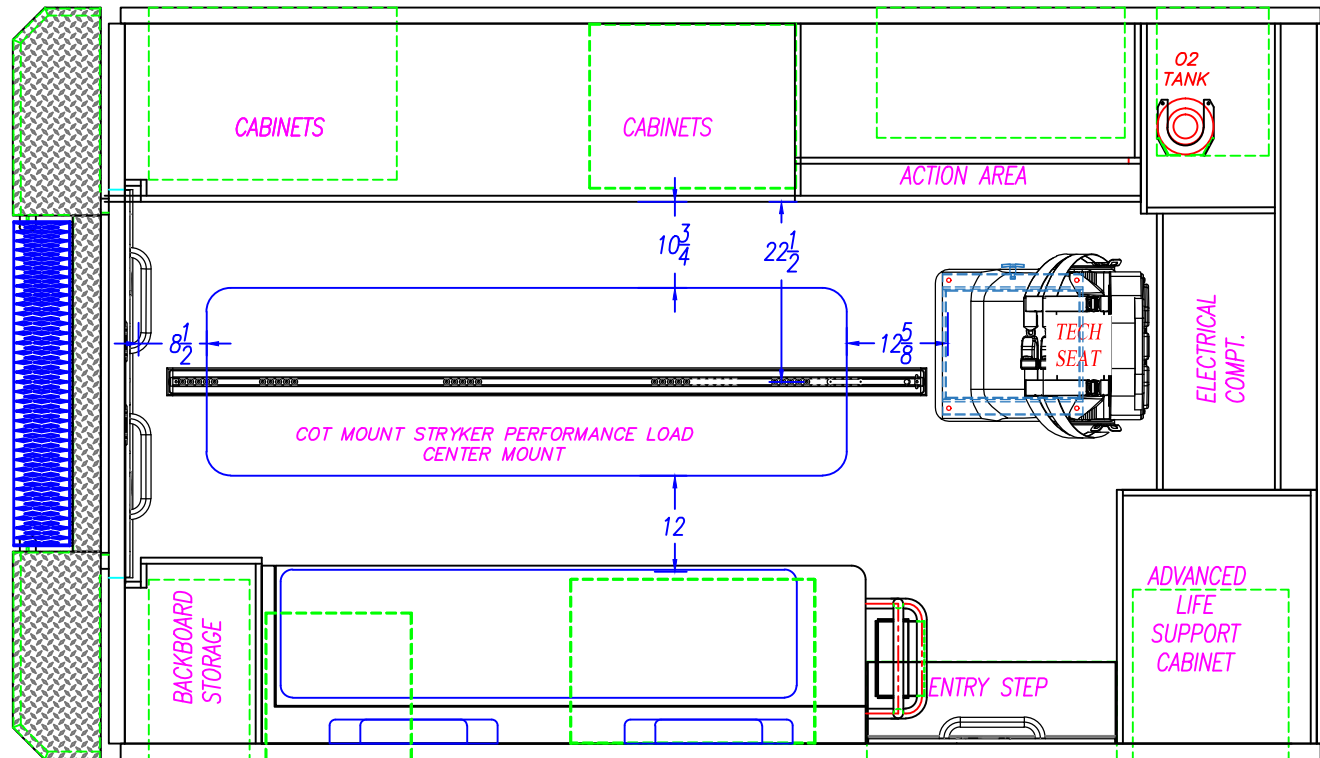
Dealer:

Approved By:

Date:

Customer:

Sheet
D



DESCRIPTION: PATIENT AREA PLAN		
DRAWN BY:	DATE CREATED:	SCALE: 1/2"=1'
REVISED BY:	DATE REVISED:	REVISION:
Note: Drawings are for reference only, measurements may vary from actual product.		

Dealer:

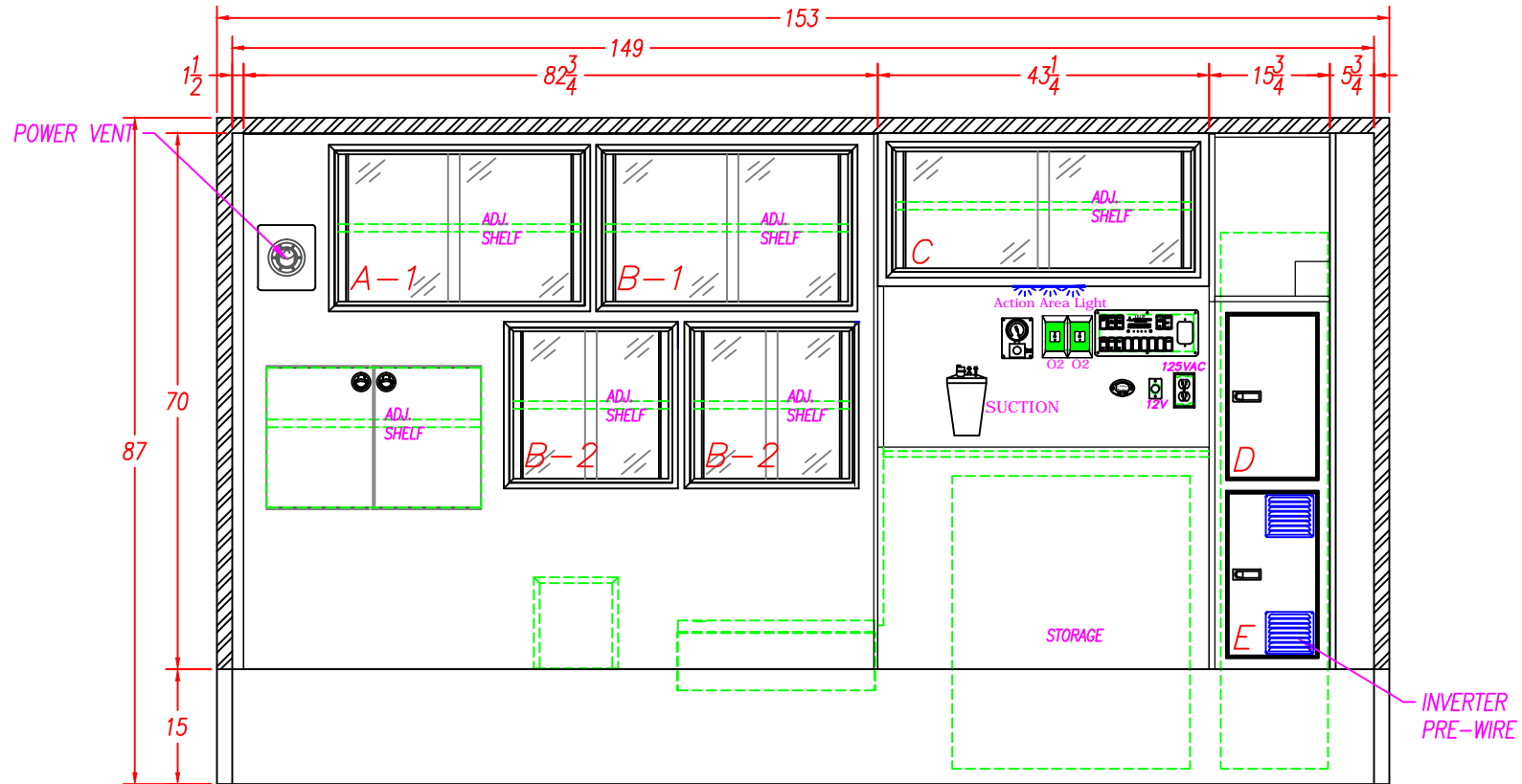
Approved By:

Date:

Customer:

Sheet

E



INTERIOR CABINET STORAGE

ITEM	HEIGHT	WIDTH	DEPTH	SPECIAL NOTE
A1-2	20 1/4"	32 1/2"	18"	
B1-2	20 1/4"	21 1/4"	18"	
C	16 1/4"	39 1/2"	15"	
D	23 1/2"	21"	17 1/4"	
E	23 1/2"	21"	17 1/4"	

DESCRIPTION: STREET SIDE INTERIOR		
DRAWN BY:	DATE CREATED:	SCALE: 1/2"=1'
REVISED BY:	DATE REVISED:	REVISION:
Note: Drawings are for reference only, measurements may vary from actual product.		

Dealer:

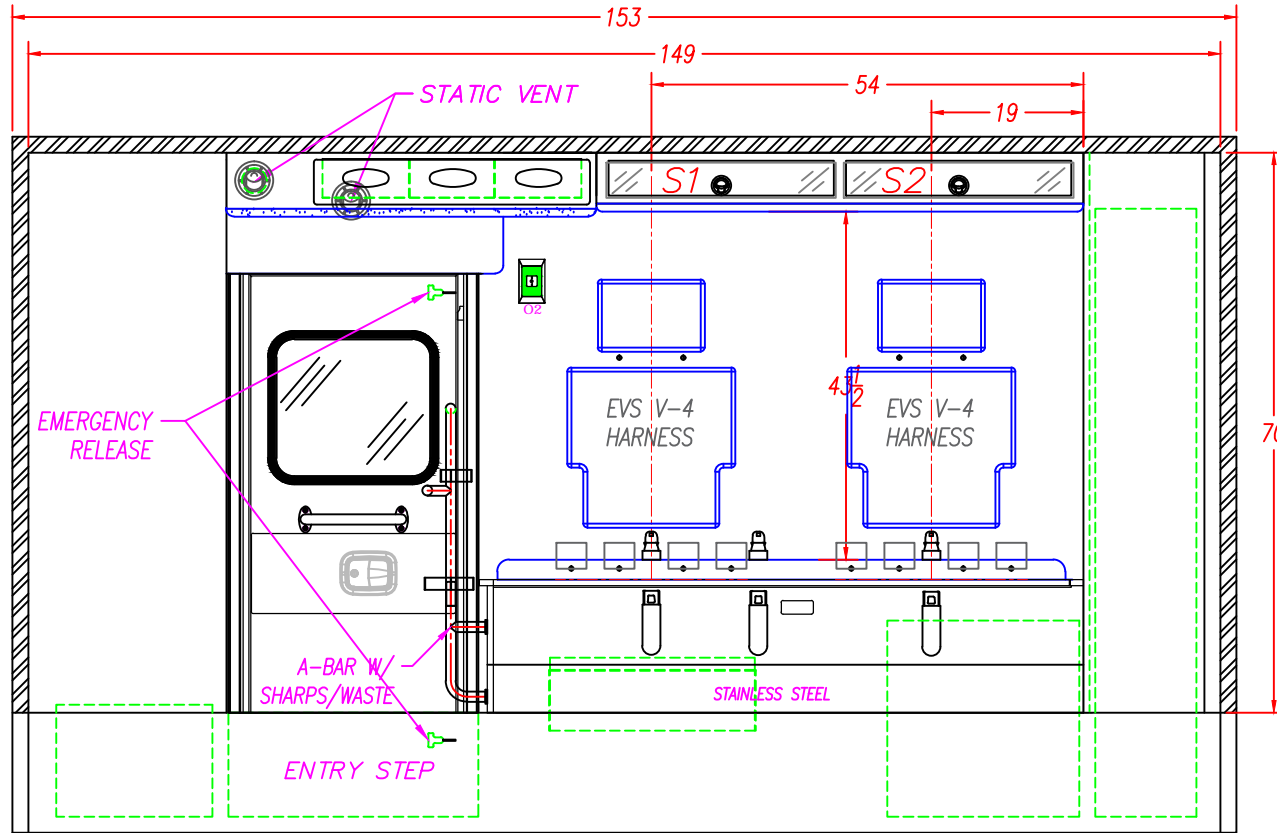
Approved By:

Date:

Customer:

Sheet

F



4" SEATBELT PLATE LOCATION

WELD SHOP	33 INCHES	NOTE: THIS DIMENSION IS FROM THE BOTTOM OF THE WALL TO THE BOTTOM OF THE 4" PLATE.						
	CABINET SHOP	NOTE: THE HOLES FOR THE TOP SEATBELT BOLTS ARE 1 1/4" FROM THE TOP OF THE SQUAD BENCH TO THE CENTER OF THE SEATBELT BOLT. NOTE: THE HOLES FOR THE BOTTOM SEATBELT BOLTS ON THE SQUAD BENCH ARE 9 3/8" FROM THE TOP OF THE FLOOR TO THE CENTER OF THE BOLT.						
	NOTE: READ THE DIMENSIONS FROM RIGHT TO LEFT AS VIEWED	THE LOCATION OF THE BOTTOM SEATBELT HOLES ARE FROM THE REAR OF THE SQUAD BENCH TO THE CENTER OF THE 1/2" HOLE	BOTTOM			PRE DRILLED	PRE DRILLED	PRE DRILLED
	THE LOCATION OF THE TOP SEATBELT HOLES ARE FROM THE REAR WALL TO THE CENTER OF THE 1/2" HOLE	TOP			54"	40 5/8"	19"	

INTERIOR CABINET STORAGE

ITEM	HEIGHT	WIDTH	DEPTH	SPECIAL NOTE
S1	6"	34"	6"	
S2	6"	34"	6"	

DESCRIPTION: CURB SIDE INTERIOR

DRAWN BY: _____ DATE CREATED: _____ SCALE: 1/2"=1'

REVISED BY: _____ DATE REVISED: _____ REVISION: _____

Note: Drawings are for reference only, measurements may vary from actual product.

Dealer:

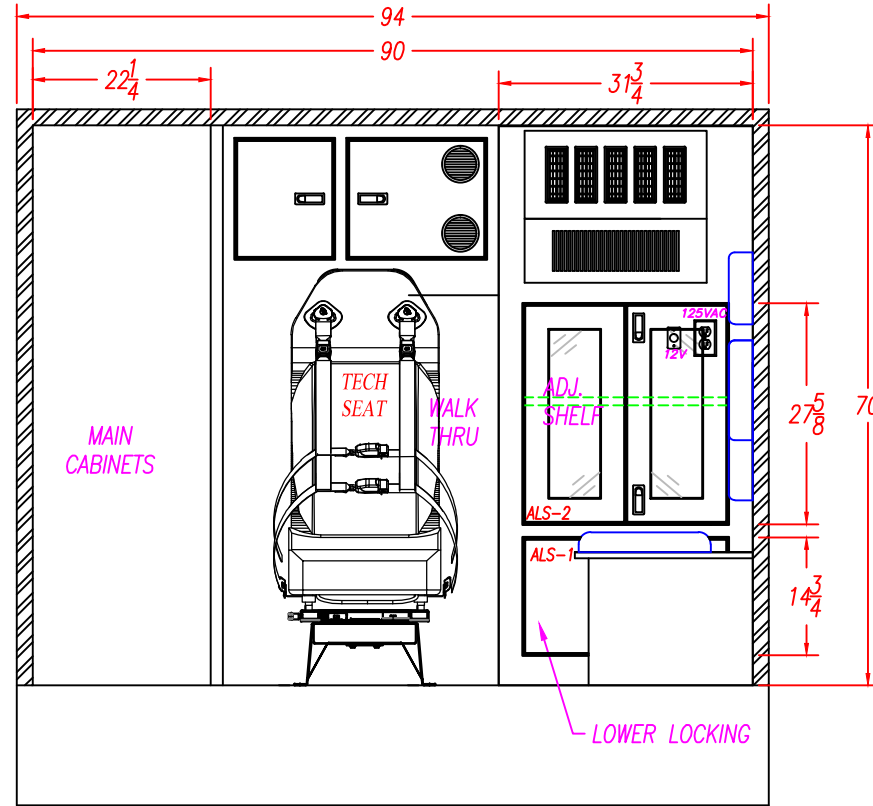
Approved By:

Date:

Customer:

Sheet

G



INTERIOR CABINET STORAGE

ITEM	HEIGHT	WIDTH	DEPTH	SPECIAL NOTE
ALS-1	14 3/4"	31"	20"	
ALS-2	27 5/8"	31"	20"	

DESCRIPTION: FRONT ELEVATION		
DRAWN BY:	DATE CREATED:	SCALE: 1/2"=1'
REVISED BY:	DATE REVISED:	REVISION:

Note: Drawings are for reference only, measurements may vary from actual product.

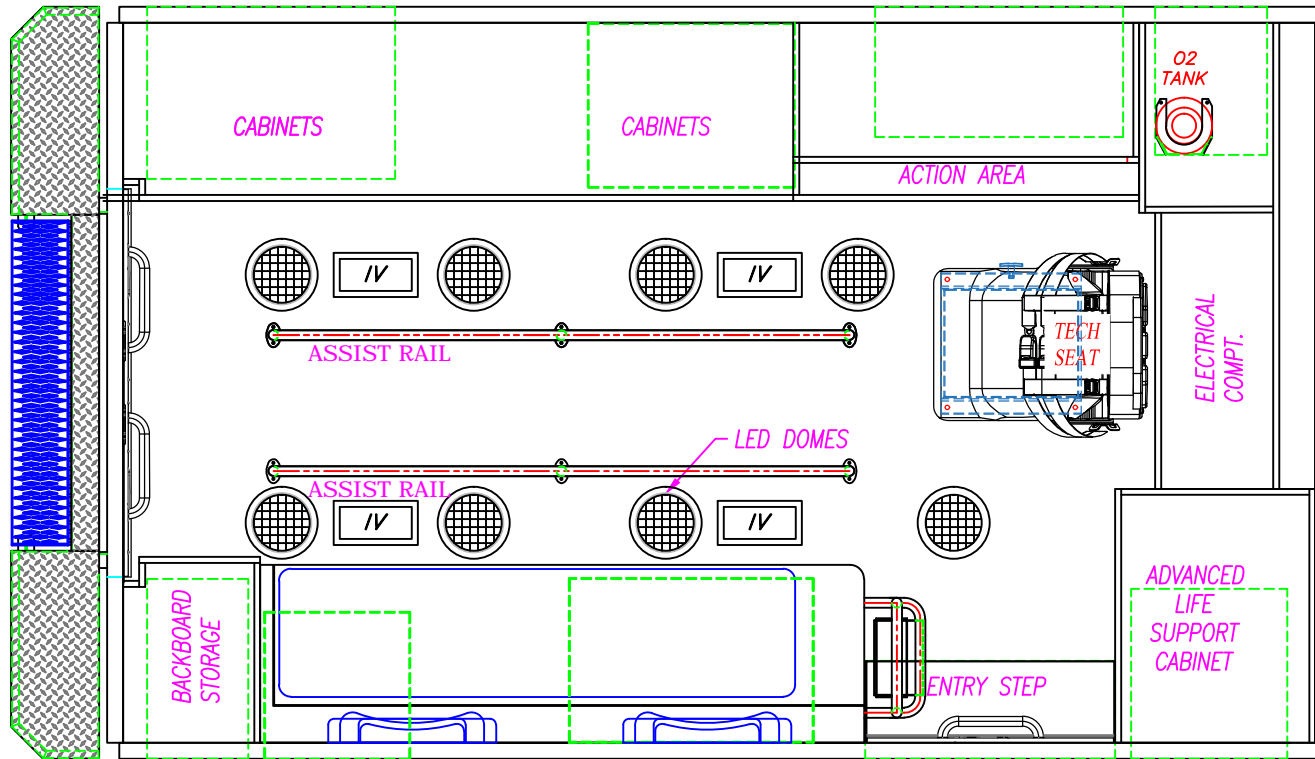
Dealer:

Approved By:

Date:

Customer:

Sheet
H



DESCRIPTION:

CEILING LAYOUT

DRAWN BY:

DATE CREATED:

SCALE:

1/2"=1'

REVISED BY:

DATE REVISED:

REVISION:

Note: Drawings are for reference only, measurements may vary from actual product.

Dealer:

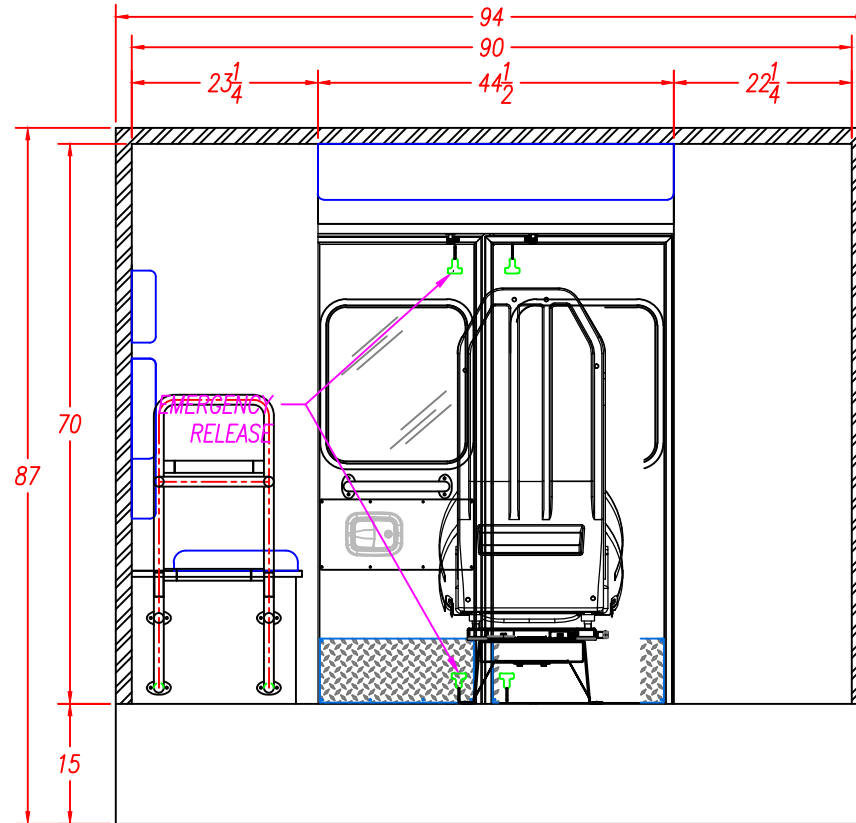
Approved By:

Date:

Customer:

Sheet

I



DESCRIPTION:

REAR ELEVATION

DRAWN BY:

DATE CREATED:

SCALE:

$1/2"=1'$

REVISED BY:

DATE REVISED:

REVISION:

Note: Drawings are for reference only, measurements may vary from actual product.