



Defect Listing

Pipe Segment Reference 1829_1828	City GEORGETOWN	Street FRASER ST.	Material Vitrified Clay Pipe	Location Code <small>Primary major arterial roads, interstates, numbered roads</small>	Pipe Use Sanitary Sewage Pipe
Upstream MH 1829	Total Length	Year Constructed	Shape Circular	Location Details WINYAH/S FRASER	
Downstream MH 1828	Length surveyed 506.3	Year Renewed	Height 12	Width	Pipe Joint Length

SPR 78	MPR 13	PO Number		Customer CITY OF GEORGETOWN	
SPRI 3.4	MPRI 3.3	Work Order Number		Purpose Maintenance Related	
QSR 524A	QMR 4231			Media label	
OPR 91	Surveyed By Eddie Newman	Direction Downstream	Date 08/10/2023		Weather
OPRI 3.4	Certificate Number U-1018-0703003236	Pre-Cleaning Heavy Cleaning	Time 04:38	Additional Info	
Date Cleaned			End Time 05:26		

Distance	Condition	Cont. Dfct.	Values			Joint	Clock Position		Grade
			1st	2nd	%		At/From	To	
0	Access Point Manhole					<input type="checkbox"/>			
Remarks: 1829									
0	Miscellaneous Water Level				10	<input type="checkbox"/>			
3.5	Crack Longitudinal	S01				<input checked="" type="checkbox"/>	12		2
Remarks: CRACK STARTS AT MH									
6.9	Crack Longitudinal	F01				<input checked="" type="checkbox"/>	12		2
Remarks: CRACK STARTS AT MH									
28.7	Miscellaneous Water Level				15	<input type="checkbox"/>			
45.9	Miscellaneous Water Level				5	<input type="checkbox"/>			
53.7	Miscellaneous Water Level				10	<input type="checkbox"/>			
60.2	Miscellaneous Water Level Sag				5	<input type="checkbox"/>			2
Remarks: SAG									
74.4	Tap Factory Made Capped		4			<input type="checkbox"/>	1		
76.8	Tap Factory Made Capped		4			<input type="checkbox"/>	11		
78.9	Hole					<input type="checkbox"/>	11		4
Remarks: HOLE OR POSSIBLE LATERAL									
86.4	Hole					<input type="checkbox"/>	1		4
Remarks: HOLE OR POSSIBLE LATERAL									
93.9	Miscellaneous Water Level				10	<input type="checkbox"/>			
114.9	Tap Factory Made Capped		4			<input type="checkbox"/>	11		
Remarks: CAPPED WITH BRICK									
117.3	Tap Factory Activity		4			<input type="checkbox"/>	2		
Remarks: UNKNOWN IF ACTUALLY ACTIVE									
126.5	Fracture Circumferential					<input checked="" type="checkbox"/>	5	7	2
Remarks: FRACTURE IN BOTTOM OF PIPE									
129.3	Miscellaneous Water Level				25	<input type="checkbox"/>			
145.1	Hole					<input type="checkbox"/>	1		4
Remarks: HOLE OR POSSIBEL OLD LATERAL									
152.6	Hole					<input type="checkbox"/>	11		4
Remarks: HOLE OR POSSIBLE OLD LATERAL									
158.1	Tap Factory Made Capped		4			<input type="checkbox"/>	1		
Remarks: CAPPED OFF WITH BRICK									
163.1	Tap Factory Activity		4			<input type="checkbox"/>	11		
165.3	Miscellaneous Water Level				15	<input type="checkbox"/>			
181.1	Hole					<input type="checkbox"/>	1		4
Remarks: HOLE OR OLD LATERAL									
191.6	Tap Break-in Activity		4			<input type="checkbox"/>	11		



Defect Listing

Pipe Segment Reference	City	Street	Material	Location Code	Pipe Use
1829_1828	GEORGETOWN	FRASER ST.	Vitrified Clay Pipe		Sanitary Sewage Pipe
Upstream MH 1829	Total Length	Year Constructed	Shape Circular	Location Details WINYAH/S FRASER	
Downstream MH 1828	Length surveyed 506.3	Year Renewed	Height 12	Width	Pipe Joint Length
Remarks: WITH INFILTRATION					
203.6	Tap Factory Made Capped	4	<input type="checkbox"/>	11	
Remarks: CAPPED WITH BRICK					
211.1	Tap Factory Made Capped	4	<input type="checkbox"/>	1	
Remarks: CAPPED WITH BRICK					
223.5	Hole		<input type="checkbox"/>	1	4
Remarks: HOLE OR OLD LATERAL					
230.6	Miscellaneous Camera Underwater		<input type="checkbox"/>		4
249	Tap Factory Made Abandoned	4	<input type="checkbox"/>	1	
Remarks: FILLED WITH UNKNOWN SUBSTANCE					
251.6	Tap Factory Made Capped	4	<input type="checkbox"/>	10	
Remarks: CAPPED WITH BRICK					
272.1	Hole		<input type="checkbox"/>	1	4
Remarks: HOLE OR OLD LATERAL					
285	Hole		<input type="checkbox"/>	11	4
Remarks: HOLE OR OLD LATERAL					
288.6	Crack Circumferential		<input checked="" type="checkbox"/>	3	5 1
Remarks: CRACK AT JOINT					
288.6	Miscellaneous Water Level		35	<input type="checkbox"/>	
291.8	Miscellaneous Camera Underwater		<input type="checkbox"/>		4
Remarks: CAMERA UNDERWATER					
297	Tap Factory Made Capped	4	<input type="checkbox"/>	1	
Remarks: CAPPED WITH BRICK					
308.1	Hole		<input type="checkbox"/>	1	4
Remarks: ;HOLE OR OLD LATERAL					
315	Tap Factory Activity	4	<input type="checkbox"/>	10	
315.2	Hole		<input type="checkbox"/>	11	4
Remarks: HOLE OR OLD LATERAL					
343.5	Hole		<input type="checkbox"/>	11	4
Remarks: HOLE OR OLD LATERAL					
345.2	Tap Factory Made Capped	4	<input type="checkbox"/>	1	
Remarks: CAPPED WITH BRICK					
350.3	Tap Factory Made Capped	4	<input type="checkbox"/>	11	
Remarks: CAPPED DEFECTIVE					
370.7	Tap Factory Activity	4	<input type="checkbox"/>	11	
386.3	Hole		<input type="checkbox"/>	11	4
Remarks: HOLE OR OLD LATERAL					
388.7	Tap Factory Made	4	<input type="checkbox"/>	2	
Remarks: CAPPED WITH BRICK					
393.8	Tap Break-in Activity	4	<input type="checkbox"/>	2	
422.1	Tap Factory Activity	4	<input type="checkbox"/>	10	
Remarks: SMALLER PIPE INSIDE TF					
462.6	Tap Factory Made Capped	4	<input type="checkbox"/>	2	
Remarks: CAPPED WITH BRICK					
472.5	Tap Factory Made Defective	4	<input type="checkbox"/>	9	3
Remarks: INFILTRATION					
474.2	Crack Multiple		<input checked="" type="checkbox"/>	7	2 3
Remarks: MULTIPLE CRACKS					



Defect Listing

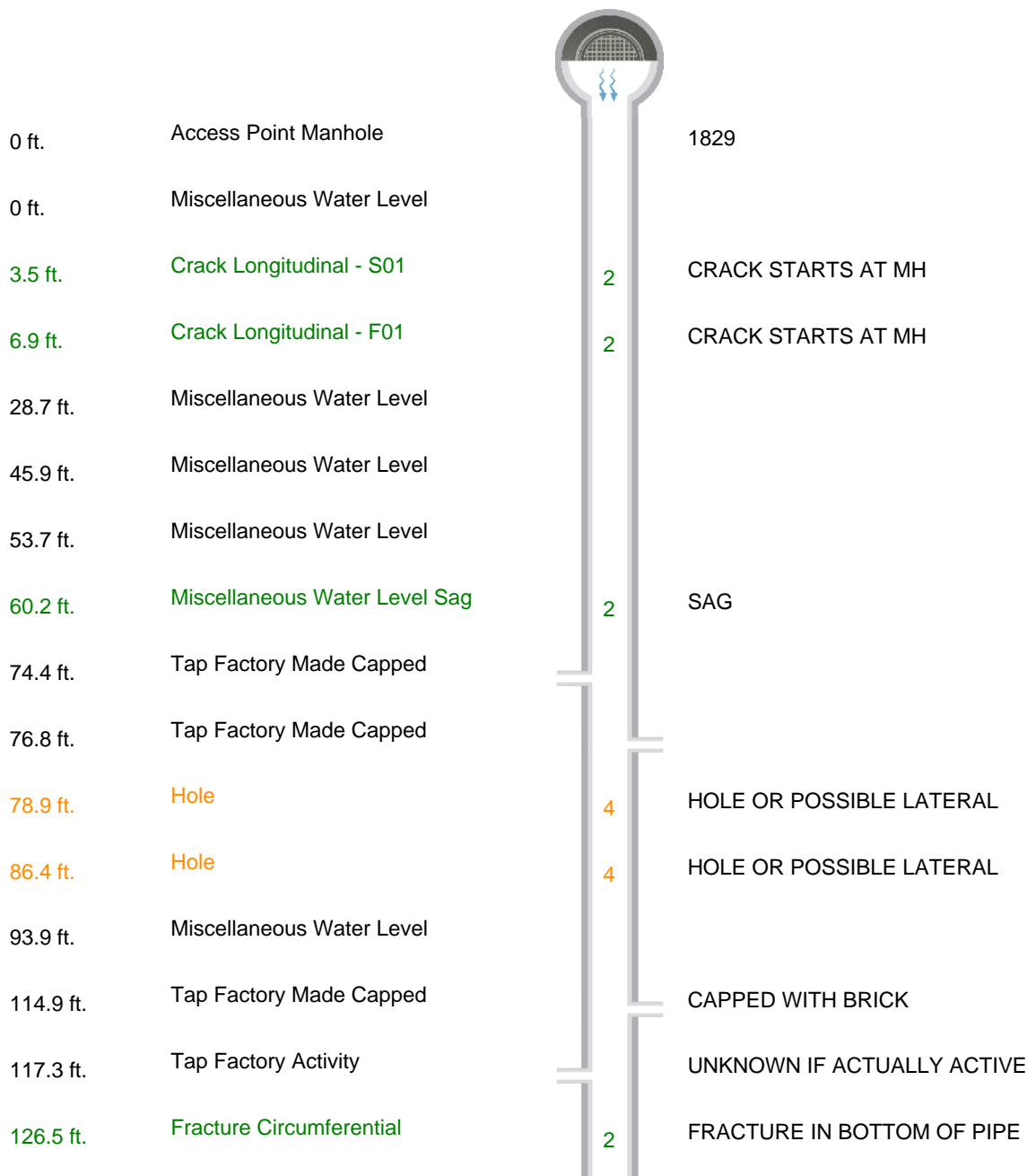
Pipe Segment Reference	City	Street	Material	Location Code	Pipe Use				
1829_1828	GEORGETOWN	FRASER ST.	Vitrified Clay Pipe	<small>Primary major arterial roads, interstates, numbered rds</small>	Sanitary Sewage Pipe				
Upstream MH 1829	Total Length	Year Constructed	Shape Circular	Location Details WINYAH/S FRASER					
Downstream MH 1828	Length surveyed 506.3	Year Renewed	Height 12	Width	Pipe Joint Length				
487.2	Crack Longitudinal	S02		<input type="checkbox"/>	12				2
Remarks: CRACK IN TOP OF PIPE									
493.2	Broken Pipe Soil Visible			<input checked="" type="checkbox"/>	8		2		5
Remarks: PIECE OF PIPE MISSING THROUGHOUT MOST OF JOINT WITH SOIL VISIBLE									
505.2	Hole Soil Visible			<input checked="" type="checkbox"/>	8		4		5
Remarks: PIPW IS BROKEN WITH HOLE AND SOIL VISIBLE									
505.2	Joint Offset Large Defective			<input type="checkbox"/>					4
Remarks: PIPE HAS BECOME DISLODGED AT JOINT WITH SOIL VISIBLE									
506.3	Crack Longitudinal	F02		<input type="checkbox"/>	12				2
Remarks: CRACK IN TOP OF PIPE									
506.3	Miscellaneous General Observation			<input type="checkbox"/>					
Remarks: PIPE IS OFFSET SEVERELY NEAR MH CAN NOT PROCEED									
506.3	Miscellaneous Survey Abandoned			<input type="checkbox"/>					
Remarks: END OF SURVEY CAN NOT PROCEED									
506.3	Miscellaneous General Observation			<input type="checkbox"/>					
Remarks: NOTE* POSSIBLE JOLD AT NEXT JOINT ALSO, UNABLE TO PROCEED AT THIS POINT									



Defect Listing Plot

Pipe Segment Reference 1829_1828	City GEORGETOWN	Street FRASER ST.	Material Vitrified Clay Pipe	Location Code <small>Primary major arterial roads, interstates, numbered rd</small>	Pipe Use Sanitary Sewage Pipe
Upstream MH 1829	Total Length	Year Constructed	Shape Circular	Location Details WINYAH/S FRASER	
Downstream MH 1828	Length surveyed 506.3	Year Renewed	Height 12	Width	Pipe Joint Length

SPR 78	MPR 13	PO Number		Customer CITY OF GEORGETOWN	
SPRI 3.4	MPRI 3.3	Work Order Number		Purpose Maintenance Related	
QSR 524A	QMR 4231				
OPR 91	Surveyed By Eddie Newman	Direction Downstream	Date 08/10/2023	Media label	
OPRI 3.4	Certificate Number U-1018-0703003236	Pre-Cleaning Heavy Cleaning	Time 04:38	Weather	
Date Cleaned			End Time 05:26	Additional Info	





Defect Listing Plot

Pipe Segment Reference 1829_1828	City GEORGETOWN	Street FRASER ST.	Material Vitrified Clay Pipe		Location Code <small>Primary major arterial roads, interstates, numbered rd</small>	Pipe Use Sanitary Sewage Pipe
Upstream MH 1829	Total Length	Year Constructed	Shape Circular		Location Details WINYAH/S FRASER	
Downstream MH 1828	Length surveyed 506.3	Year Renewed	Height 12	Width	Pipe Joint Length	





Defect Listing Plot

Pipe Segment Reference 1829_1828	City GEORGETOWN	Street FRASER ST.	Material Vitrified Clay Pipe	Location Code <small>Primary major arterial roads, interstates, numbered rd</small>	Pipe Use Sanitary Sewage Pipe
Upstream MH 1829	Total Length	Year Constructed	Shape Circular	Location Details WINYAH/S FRASER	
Downstream MH 1828	Length surveyed 506.3	Year Renewed	Height 12	Width	Pipe Joint Length

315.2 ft.	Hole	4	HOLE OR OLD LATERAL
343.5 ft.	Hole	4	HOLE OR OLD LATERAL
345.2 ft.	Tap Factory Made Capped		CAPPED WITH BRICK
350.3 ft.	Tap Factory Made Capped		CAPPED DEFECTIVE
370.7 ft.	Tap Factory Activity		
386.3 ft.	Hole	4	HOLE OR OLD LATERAL
388.7 ft.	Tap Factory Made		CAPPED WITH BRICK
393.8 ft.	Tap Break-in Activity		
422.1 ft.	Tap Factory Activity		SMALLER PIPE INSIDE TF
462.6 ft.	Tap Factory Made Capped		CAPPED WITH BRICK
472.5 ft.	Tap Factory Made Defective	3	INFILTRATION
474.2 ft.	Crack Multiple	3	MULTIPLE CRACKS
487.2 ft.	Crack Longitudinal - S02	2	CRACK IN TOP OF PIPE
493.2 ft.	Broken Pipe Soil Visible	5	PIECE OF PIPE MISSING THROUGHOUT MOST OF JOINT WITH SOIL VISIBLE
505.2 ft.	Hole Soil Visible	5	PIPW IS BROKEN WITH HOLE AND SOIL VISIBLE
505.2 ft.	Joint Offset Large Defective	4	PIPE HAS BECOME DISLODGED AT JOINT WITH SOIL VISIBLE
506.3 ft.	Crack Longitudinal - F02	2	CRACK IN TOP OF PIPE
506.3 ft.	Miscellaneous General Observation		PIPE IS OFFSET SEVERELY NEAR MH CAN NOT PROCEED
506.3 ft.	Miscellaneous Survey Abandoned		END OF SURVEY CAN NOT PROCEED

506.3 ft. Miscellaneous General Observation NOTE* POSSIBLE JOLD AT NEXT JOINT ALSO, UNABLE TO PROCEED AT THIS POINT



Defect Listing Plot

Pipe Segment Reference 1829_1828	City GEORGETOWN	Street FRASER ST.	Material Vitrified Clay Pipe		Location Code <small>Primary major arterial roads, interstates, numbered rd</small>	Pipe Use Sanitary Sewage Pipe
Upstream MH 1829	Total Length	Year Constructed	Shape Circular		Location Details WINYAH/S FRASER	
Downstream MH 1828	Length surveyed 506.3	Year Renewed	Height 12	Width	Pipe Joint Length	



1828



4 Image Report

Pipe Segment Reference 1829_1828	City GEORGETOWN	Street FRASER ST.	Material Vitrified Clay Pipe	Location Code <small>Primary major arterial roads, interstates, numbered rds</small>	Pipe Use Sanitary Sewage Pipe
Upstream MH 1829	Total Length	Year Constructed	Shape Circular	Location Details WINYAH/S FRASER	
Downstream MH 1828	Length surveyed 506.3	Year Renewed	Height 12	Width	Pipe Joint Length



AMH
Access Point Manhole

10.08.23 4:39 AM LC1: 0.0ft

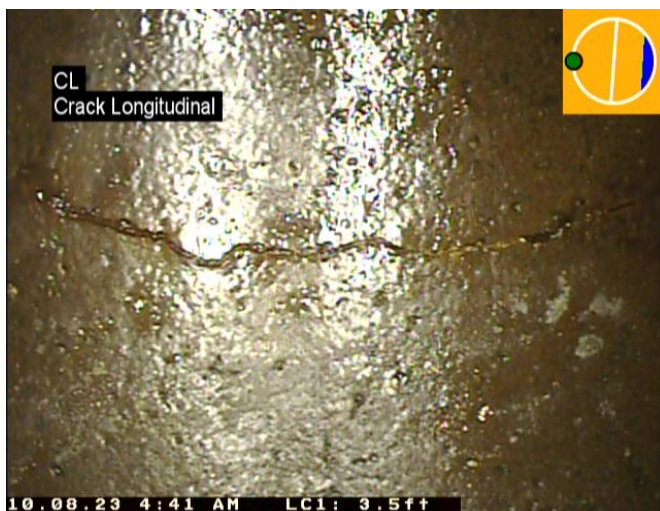
Distance: 0.0 ft. Grade: 0
Condition: Access Point Manhole
Remarks: 1829



MWL
Miscellaneous Water Level

10.08.23 4:39 AM LC1: 0.0ft

Distance: 0.0 ft. Grade: 0
Condition: Miscellaneous Water Level
Remarks: N/A



CL
Crack Longitudinal

10.08.23 4:41 AM LC1: 3.5ft

Distance: 3.5 ft. Grade: 2
Condition: Crack Longitudinal
Remarks: CRACK STARTS AT MH



CL
Crack Longitudinal

10.08.23 4:41 AM LC1: 6.9ft

Distance: 6.9 ft. Grade: 2
Condition: Crack Longitudinal
Remarks: CRACK STARTS AT MH



4 Image Report

Pipe Segment Reference 1829_1828	City GEORGETOWN	Street FRASER ST.	Material Vitrified Clay Pipe	Location Code <small>Primary major arterial roads, interstates, numbered rds</small>	Pipe Use Sanitary Sewage Pipe
Upstream MH 1829	Total Length	Year Constructed	Shape Circular	Location Details WINYAH/S FRASER	
Downstream MH 1828	Length surveyed 506.3	Year Renewed	Height 12	Width	Pipe Joint Length



Distance: 28.7 ft. Grade: 0
 Condition: Miscellaneous Water Level
 Remarks: N/A



Distance: 45.9 ft. Grade: 0
 Condition: Miscellaneous Water Level
 Remarks: N/A



Distance: 53.7 ft. Grade: 0
 Condition: Miscellaneous Water Level
 Remarks: N/A



Distance: 60.2 ft. Grade: 2
 Condition: Miscellaneous Water Level Sag
 Remarks: SAG



4 Image Report

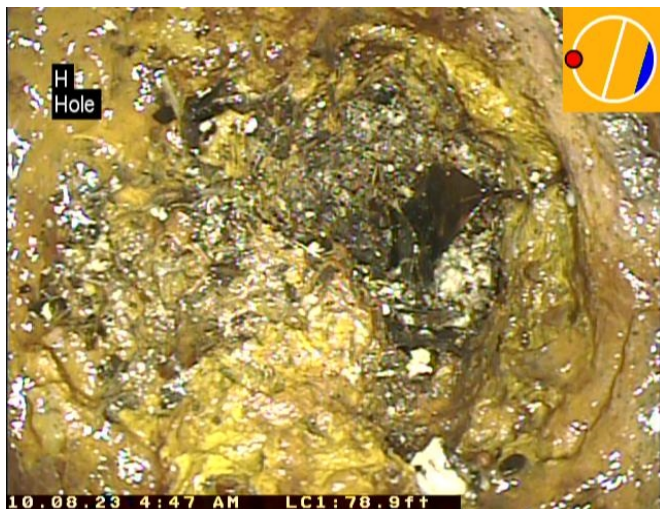
Pipe Segment Reference 1829_1828	City GEORGETOWN	Street FRASER ST.	Material Vitrified Clay Pipe	Location Code <small>Primary major arterial roads, interstates, numbered rds</small>	Pipe Use Sanitary Sewage Pipe
Upstream MH 1829	Total Length	Year Constructed	Shape Circular	Location Details WINYAH/S FRASER	
Downstream MH 1828	Length surveyed 506.3	Year Renewed	Height 12	Width	Pipe Joint Length



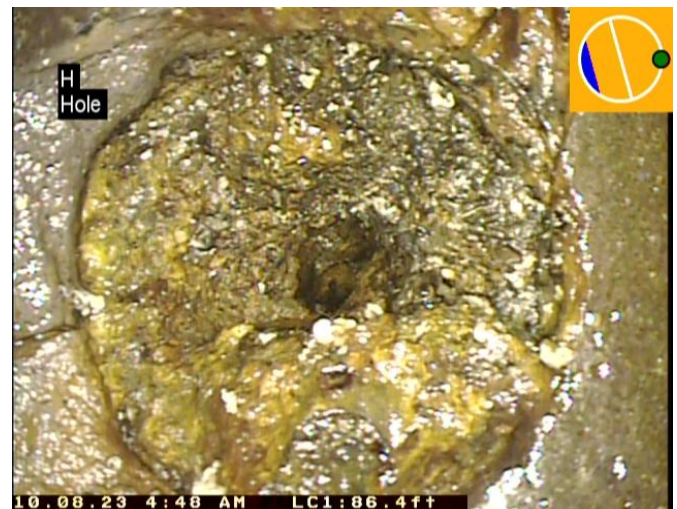
Distance: 74.4 ft. Grade: 0
 Condition: Tap Factory Made Capped
 Remarks: N/A



Distance: 76.8 ft. Grade: 0
 Condition: Tap Factory Made Capped
 Remarks: N/A



Distance: 78.9 ft. Grade: 4
 Condition: Hole
 Remarks: HOLE OR POSSIBLE LATERAL



Distance: 86.4 ft. Grade: 4
 Condition: Hole
 Remarks: HOLE OR POSSIBLE LATERAL



4 Image Report

Pipe Segment Reference 1829_1828	City GEORGETOWN	Street FRASER ST.	Material Vitrified Clay Pipe	Location Code <small>Primary major arterial roads, interstates, numbered roads</small>	Pipe Use Sanitary Sewage Pipe
Upstream MH 1829	Total Length	Year Constructed	Shape Circular	Location Details WINYAH/S FRASER	
Downstream MH 1828	Length surveyed 506.3	Year Renewed	Height 12	Width	Pipe Joint Length



CC
Crack Circumferential

Distance: 93.9 ft. Grade: 0
 Condition: Miscellaneous Water Level
 Remarks: N/A



TFC
Tap Factory Made Capped

Distance: 114.9 ft. Grade: 0
 Condition: Tap Factory Made Capped
 Remarks: CAPPED WITH BRICK



TFA
Tap Factory Activity

Distance: 117.3 ft. Grade: 0
 Condition: Tap Factory Activity
 Remarks: UNKNOWN IF ACTUALLY ACTIVE



FC
Fracture Circumferential

Distance: 126.5 ft. Grade: 2
 Condition: Fracture Circumferential
 Remarks: FRACTURE IN BOTTOM OF PIPE



4 Image Report

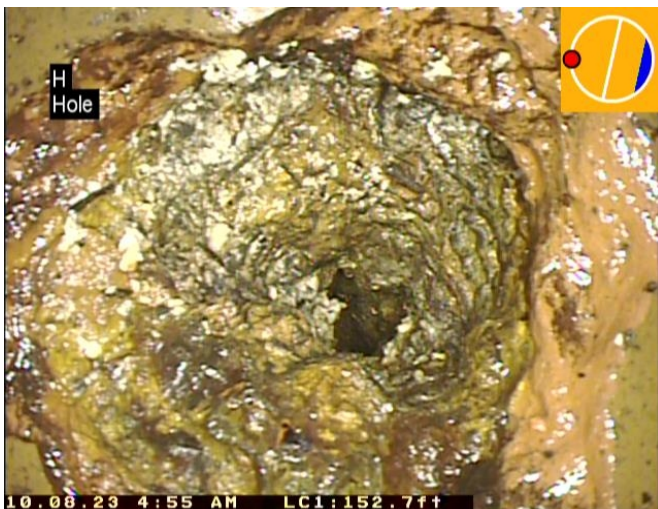
Pipe Segment Reference 1829_1828	City GEORGETOWN	Street FRASER ST.	Material Vitrified Clay Pipe	Location Code <small>Primary major arterial roads, interstates, numbered roads</small>	Pipe Use Sanitary Sewage Pipe
Upstream MH 1829	Total Length	Year Constructed	Shape Circular	Location Details WINYAH/S FRASER	
Downstream MH 1828	Length surveyed 506.3	Year Renewed	Height 12	Width	Pipe Joint Length



Distance: 129.3 ft. Grade: 0
 Condition: Miscellaneous Water Level
 Remarks: N/A



Distance: 145.1 ft. Grade: 4
 Condition: Hole
 Remarks: HOLE OR POSSIBEL OLD LATERAL



Distance: 152.6 ft. Grade: 4
 Condition: Hole
 Remarks: HOLE OR POSSIBLE OLD LATERAL



Distance: 158.1 ft. Grade: 0
 Condition: Tap Factory Made Capped
 Remarks: CAPPED OFF WITH BRICK



4 Image Report

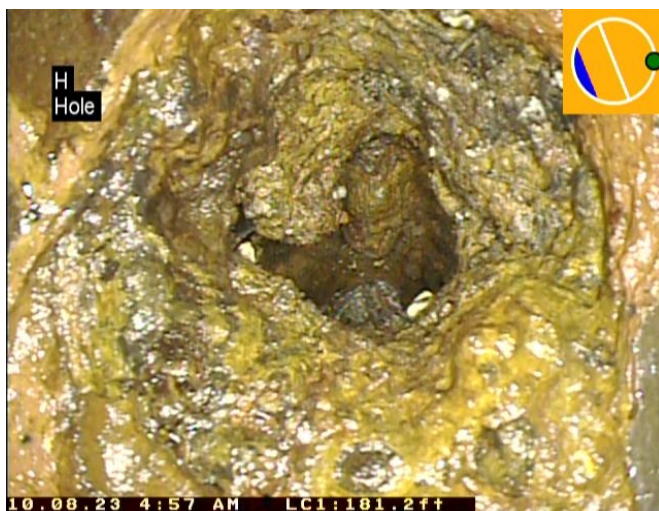
Pipe Segment Reference 1829_1828	City GEORGETOWN	Street FRASER ST.	Material Vitrified Clay Pipe	Location Code <small>Primary major arterial roads, interstates, numbered roads</small>	Pipe Use Sanitary Sewage Pipe
Upstream MH 1829	Total Length	Year Constructed	Shape Circular	Location Details WINYAH/S FRASER	
Downstream MH 1828	Length surveyed 506.3	Year Renewed	Height 12	Width	Pipe Joint Length



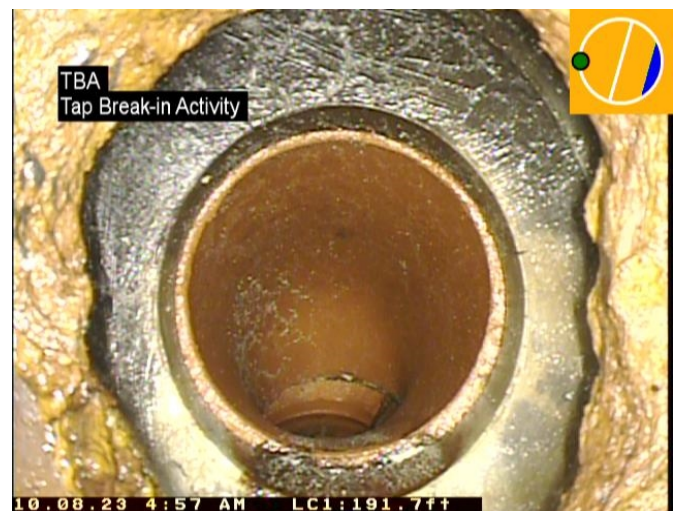
Distance: 163.1 ft. **Grade:** 0
Condition: Tap Factory Activity
Remarks: N/A



Distance: 165.3 ft. **Grade:** 0
Condition: Miscellaneous Water Level
Remarks: N/A



Distance: 181.1 ft. **Grade:** 4
Condition: Hole
Remarks: HOLE OR OLD LATERAL



Distance: 191.6 ft. **Grade:** 0
Condition: Tap Break-in Activity
Remarks: WITH INFILTRATION



4 Image Report

Pipe Segment Reference 1829_1828	City GEORGETOWN	Street FRASER ST.	Material Vitrified Clay Pipe	Location Code <small>Primary major arterial roads, interstates, numbered rds</small>	Pipe Use Sanitary Sewage Pipe
Upstream MH 1829	Total Length	Year Constructed	Shape Circular	Location Details WINYAH/S FRASER	
Downstream MH 1828	Length surveyed 506.3	Year Renewed	Height 12	Width	Pipe Joint Length



Distance: 203.6 ft. Grade: 0
 Condition: Tap Factory Made Capped
 Remarks: CAPPED WITH BRICK



Distance: 211.1 ft. Grade: 0
 Condition: Tap Factory Made Capped
 Remarks: CAPPED WITH BRICK



Distance: 223.5 ft. Grade: 4
 Condition: Hole
 Remarks: HOLE OR OLD LATERAL



Distance: 230.6 ft. Grade: 4
 Condition: Miscellaneous Camera Underwater
 Remarks: N/A



4 Image Report

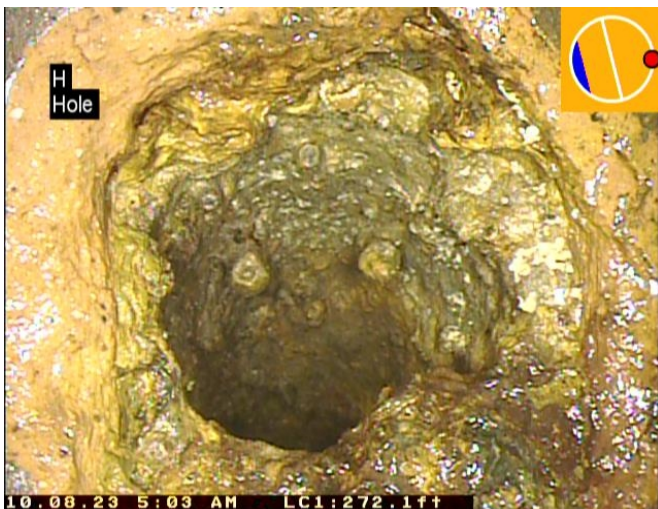
Pipe Segment Reference 1829_1828	City GEORGETOWN	Street FRASER ST.	Material Vitrified Clay Pipe	Location Code <small>Primary major arterial roads, interstates, numbered roads</small>	Pipe Use Sanitary Sewage Pipe
Upstream MH 1829	Total Length	Year Constructed	Shape Circular	Location Details WINYAH/S FRASER	
Downstream MH 1828	Length surveyed 506.3	Year Renewed	Height 12	Width	Pipe Joint Length



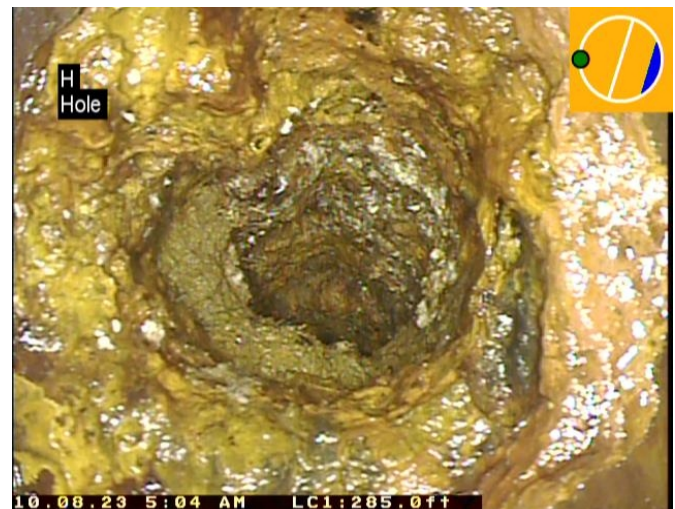
Distance: 249.0 ft. **Grade:** 0
Condition: Tap Factory Made Abandoned
Remarks: FILLED WITH UNKNOWN SUBSTANCE



Distance: 251.6 ft. **Grade:** 0
Condition: Tap Factory Made Capped
Remarks: CAPPED WITH BRICK



Distance: 272.1 ft. **Grade:** 4
Condition: Hole
Remarks: HOLE OR OLD LATERAL



Distance: 285.0 ft. **Grade:** 4
Condition: Hole
Remarks: HOLE OR OLD LATERAL



4 Image Report

Pipe Segment Reference 1829_1828	City GEORGETOWN	Street FRASER ST.	Material Vitrified Clay Pipe	Location Code <small>Primary major arterial road, Interstate, numbered road</small>	Pipe Use Sanitary Sewage Pipe
Upstream MH 1829	Total Length	Year Constructed	Shape Circular	Location Details WINYAH/S FRASER	
Downstream MH 1828	Length surveyed 506.3	Year Renewed	Height 12	Width	Pipe Joint Length



CC
Crack Circumferential

Distance: 288.6 ft. Grade: 1
 Condition: Crack Circumferential
 Remarks: CRACK AT JOINT



MWL
Miscellaneous Water Level

Distance: 288.6 ft. Grade: 0
 Condition: Miscellaneous Water Level
 Remarks: N/A



MCU
Miscellaneous Camera Underwater

Distance: 291.8 ft. Grade: 4
 Condition: Miscellaneous Camera Underwater
 Remarks: CAMERA UNDERWATER



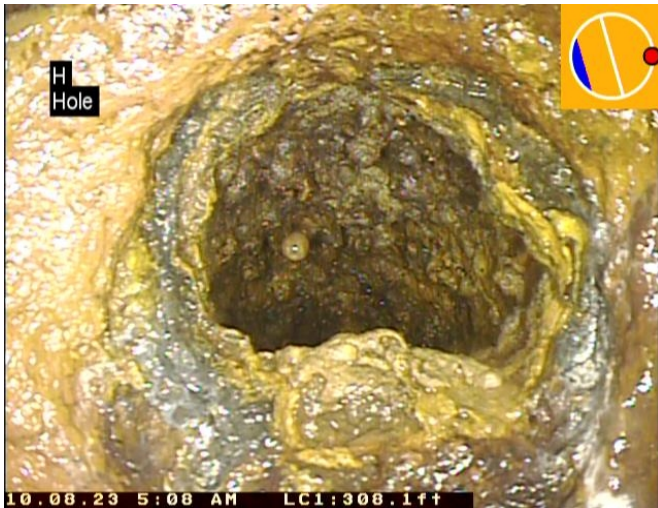
TFC
Tap Factory Made Capped

Distance: 297.0 ft. Grade: 0
 Condition: Tap Factory Made Capped
 Remarks: CAPPED WITH BRICK



4 Image Report

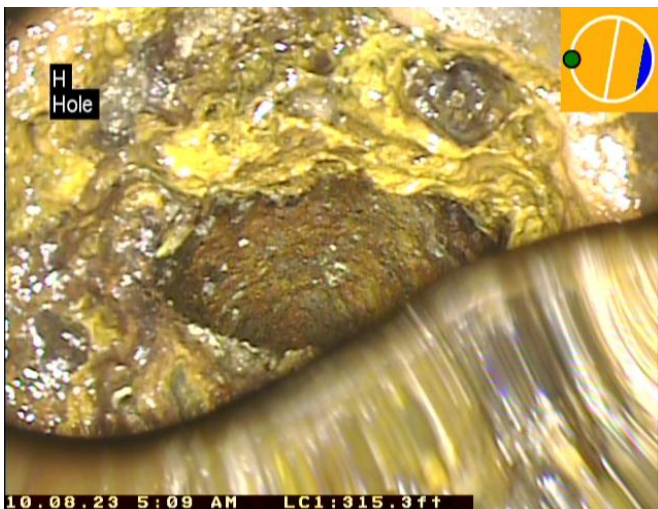
Pipe Segment Reference 1829_1828	City GEORGETOWN	Street FRASER ST.	Material Vitrified Clay Pipe	Location Code <small>Primary major arterial road, interstates, numbered road</small>	Pipe Use Sanitary Sewage Pipe
Upstream MH 1829	Total Length	Year Constructed	Shape Circular	Location Details WINYAH/S FRASER	
Downstream MH 1828	Length surveyed 506.3	Year Renewed	Height 12	Width	Pipe Joint Length



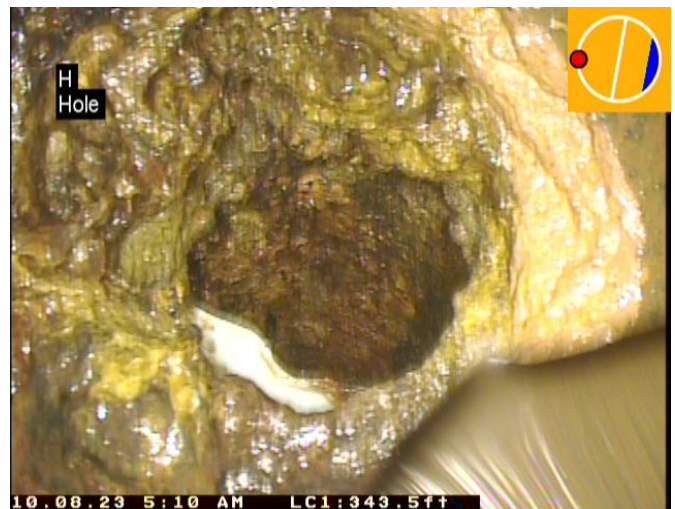
Distance: 308.1 ft. **Grade:** 4
Condition: Hole
Remarks: ;HOLE OR OLD LATERAL



Distance: 315.0 ft. **Grade:** 0
Condition: Tap Factory Activity
Remarks: N/A



Distance: 315.2 ft. **Grade:** 4
Condition: Hole
Remarks: HOLE OR OLD LATERAL



Distance: 343.5 ft. **Grade:** 4
Condition: Hole
Remarks: HOLE OR OLD LATERAL

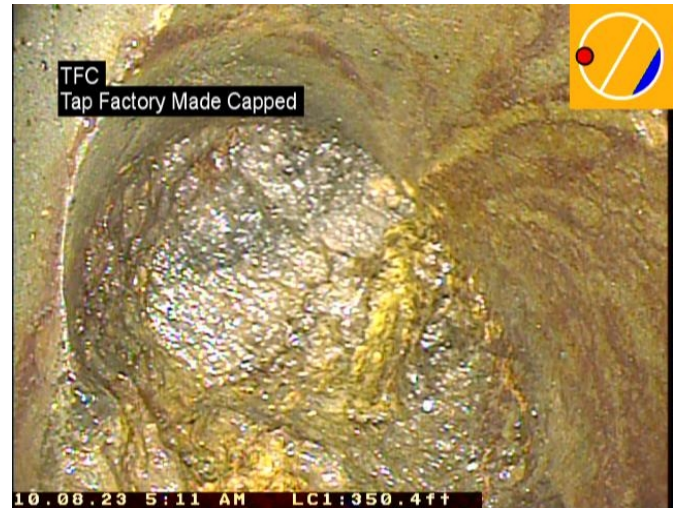


4 Image Report

Pipe Segment Reference 1829_1828	City GEORGETOWN	Street FRASER ST.	Material Vitrified Clay Pipe	Location Code <small>Primary major arterial roads, interstates, numbered rds</small>	Pipe Use Sanitary Sewage Pipe
Upstream MH 1829	Total Length	Year Constructed	Shape Circular	Location Details WINYAH/S FRASER	
Downstream MH 1828	Length surveyed 506.3	Year Renewed	Height 12	Width	Pipe Joint Length



Distance: 345.2 ft. Grade: 0
 Condition: Tap Factory Made Capped
 Remarks: CAPPED WITH BRICK



Distance: 350.3 ft. Grade: 0
 Condition: Tap Factory Made Capped
 Remarks: CAPPED DEFECTIVE



Distance: 370.7 ft. Grade: 0
 Condition: Tap Factory Activity
 Remarks: N/A



Distance: 386.3 ft. Grade: 4
 Condition: Hole
 Remarks: HOLE OR OLD LATERAL



4 Image Report

Pipe Segment Reference 1829_1828	City GEORGETOWN	Street FRASER ST.	Material Vitrified Clay Pipe	Location Code <small>Primary major arterial roads, interstates, numbered roads</small>	Pipe Use Sanitary Sewage Pipe
Upstream MH 1829	Total Length	Year Constructed	Shape Circular	Location Details WINYAH/S FRASER	
Downstream MH 1828	Length surveyed 506.3	Year Renewed	Height 12	Width	Pipe Joint Length



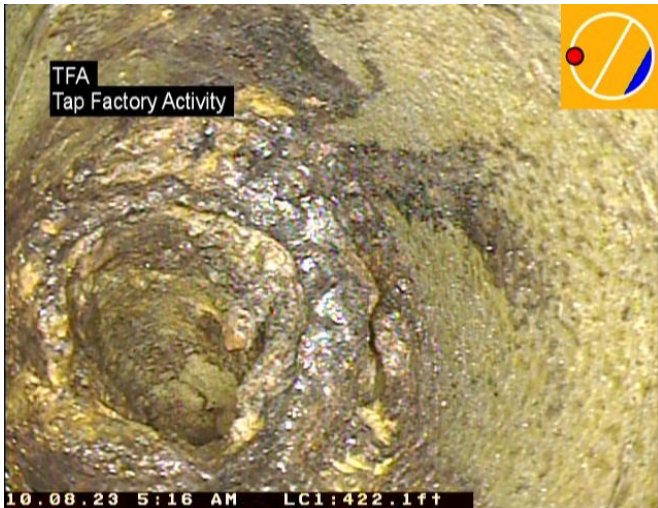
TF
Tap Factory Made

Distance: 388.7 ft. Grade: 0
 Condition: Tap Factory Made
 Remarks: CAPPED WITH BRICK



TBA
Tap Break-in Activity

Distance: 393.8 ft. Grade: 0
 Condition: Tap Break-in Activity
 Remarks: N/A



TFA
Tap Factory Activity

Distance: 422.1 ft. Grade: 0
 Condition: Tap Factory Activity
 Remarks: SMALLER PIPE INSIDE TF



TFC
Tap Factory Made Capped

Distance: 462.6 ft. Grade: 0
 Condition: Tap Factory Made Capped
 Remarks: CAPPED WITH BRICK



4 Image Report

Pipe Segment Reference 1829_1828	City GEORGETOWN	Street FRASER ST.	Material Vitrified Clay Pipe	Location Code <small>Primary major arterial roads, interstates, numbered rds</small>	Pipe Use Sanitary Sewage Pipe
Upstream MH 1829	Total Length	Year Constructed	Shape Circular	Location Details WINYAH/S FRASER	
Downstream MH 1828	Length surveyed 506.3	Year Renewed	Height 12	Width	Pipe Joint Length



TFD
Tap Factory Made Defective

Distance: 472.5 ft. Grade: 3
 Condition: Tap Factory Made Defective
 Remarks: INFILTRATION



CM
Crack Multiple

Distance: 474.2 ft. Grade: 3
 Condition: Crack Multiple
 Remarks: MULTIPLE CRACKS



CL
Crack Longitudinal

Distance: 487.2 ft. Grade: 2
 Condition: Crack Longitudinal
 Remarks: CRACK IN TOP OF PIPE



HSV
Hole Soil Visible

Distance: 493.2 ft. Grade: 5
 Condition: Broken Pipe Soil Visible
 Remarks: PIECE OF PIPE MISSING THROUGHOUT MOST OF JOINT WITH SOIL VISIBLE



4 Image Report

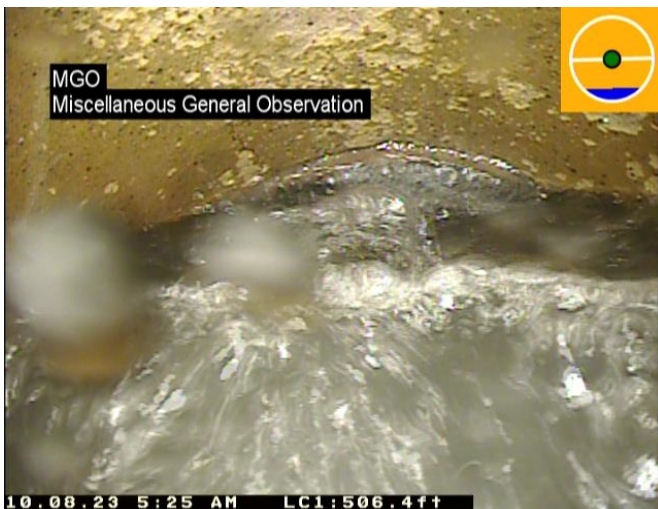
Pipe Segment Reference 1829_1828	City GEORGETOWN	Street FRASER ST.	Material Vitrified Clay Pipe	Location Code <small>Primary major arterial roads, interstates, numbered roads</small>	Pipe Use Sanitary Sewage Pipe
Upstream MH 1829	Total Length	Year Constructed	Shape Circular	Location Details WINYAH/S FRASER	
Downstream MH 1828	Length surveyed 506.3	Year Renewed	Height 12	Width	Pipe Joint Length



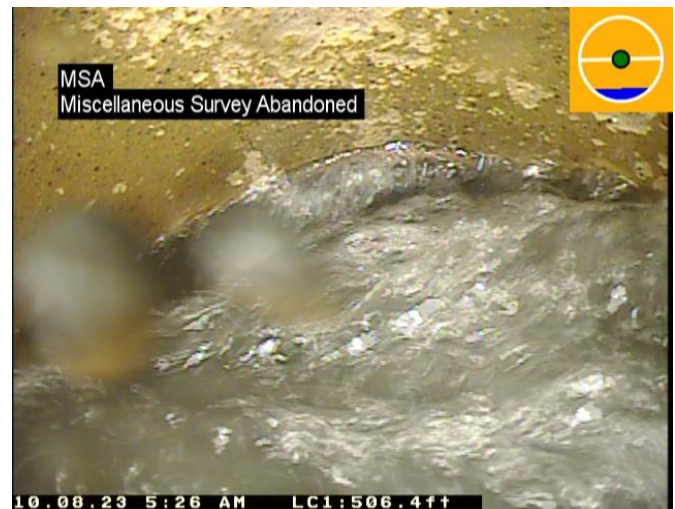
Distance: 505.2 ft. **Grade:** 5
Condition: Hole Soil Visible
Remarks: PIPW IS BROKEN WITH HOLE AND SOIL VISIBLE



Distance: 506.3 ft. **Grade:** 2
Condition: Crack Longitudinal
Remarks: CRACK IN TOP OF PIPE



Distance: 506.3 ft. **Grade:** 0
Condition: Miscellaneous General Observation
Remarks: PIPE IS OFFSET SEVERELY NEAR MH CAN NOT PROCEED



Distance: 506.3 ft. **Grade:** 0
Condition: Miscellaneous Survey Abandoned
Remarks: END OF SURVEY CAN NOT PROCEED



4 Image Report

Pipe Segment Reference 1829_1828	City GEORGETOWN	Street FRASER ST.	Material Vitrified Clay Pipe	Location Code <small>Primary major arterial roads, interstates, numbered rds</small>	Pipe Use Sanitary Sewage Pipe
Upstream MH 1829	Total Length	Year Constructed	Shape Circular	Location Details WINYAH/S FRASER	
Downstream MH 1828	Length surveyed 506.3	Year Renewed	Height 12	Width	Pipe Joint Length



Distance: 505.2 ft. Grade: 4
 Condition: Joint Offset Large Defective
 Remarks: PIPE HAS BECOME DISLODGED AT JOINT WITH SOIL VISIBLE



Distance: 506.3 ft. Grade: 0
 Condition: Miscellaneous General Observation
 Remarks: NOTE* POSSIBLE JOLD AT NEXT JOINT ALSO, UNABLE TO PROCEED AT THIS POINT