

**ADDENDUM TWO  
RECYCLE DRAIN IMPROVEMENTS AT MBWWTP FOR INTERCEPTOR  
CONTRACT NO. W-16-021-101  
CITY OF CHATTANOOGA, TENNESSEE**

The following changes shall be made to the Contract Documents, Specifications, and Drawings:

**I. Q&A**

**Q1? Can you provide a list of the pre-qualified list of CCTV/SSS Contractors that are currently working on the Consent Decree program?**

**A1. The following contractors are pre-qualified for CD work:**

- 1. Compliance Envirosystems**
- 2. Sani-Tech Jet Vac Services**
- 3. Visu-Sewer**
- 4. Hydromax**
- 5. Hydrostructures, PA**

**Q2? Can you provide the approximate pumping capacity of the North and South Pump Stations?**

**A2. The approximate pumping capacity of the North and South Pump Stations is 7.0 MGD each.**

**Q3? Can you provide a pdf of the figures referred to during the pre-RFQ conference?**

**A3. The PDF's is attached .**

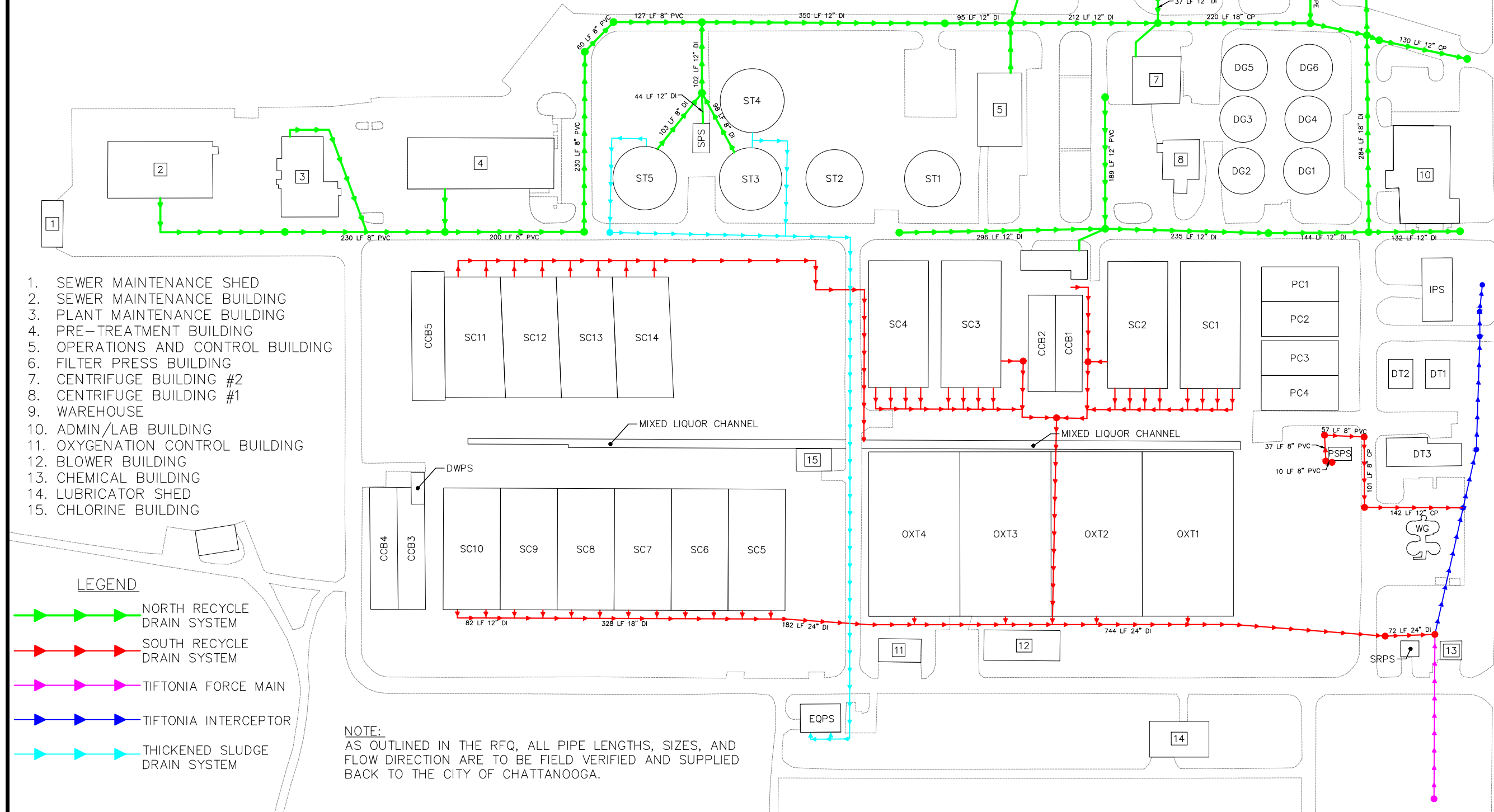
**Q4? Where the RFQ documents states "one page limit", does that mean one page front and back, meaning two numbered pages, or does that mean the front of one page (one numbered page)?**

**A4. Per the RFQ, 20 pages. This can be either 10 pages front and back or 20 single sided pages.**

AGC — AERATED GRIT CHAMBER  
 CB — CONCRETE BASIN  
 CCB3 — CHLORINE CONTACT BASIN #3  
 CCB4 — CHLORINE CONTACT BASIN #4  
 CCB5 — CHLORINE CONTACT BASIN #5  
 DG1 — DIGESTER #1  
 DG2 — DIGESTER #2  
 DG3 — DIGESTER #3  
 DG4 — DIGESTER #4  
 DG5 — DIGESTER #5  
 DG6 — DIGESTER #6  
 DT1 — DETRITOR #1  
 DT2 — DETRITOR #2  
 DT3 — DETRITOR #3  
 EQPS — EQUALIZATION BASIN PUMP STATION  
 DWPS — DILUTION WATER PUMP STATION  
 IPS — INFLUENT PUMP STATION

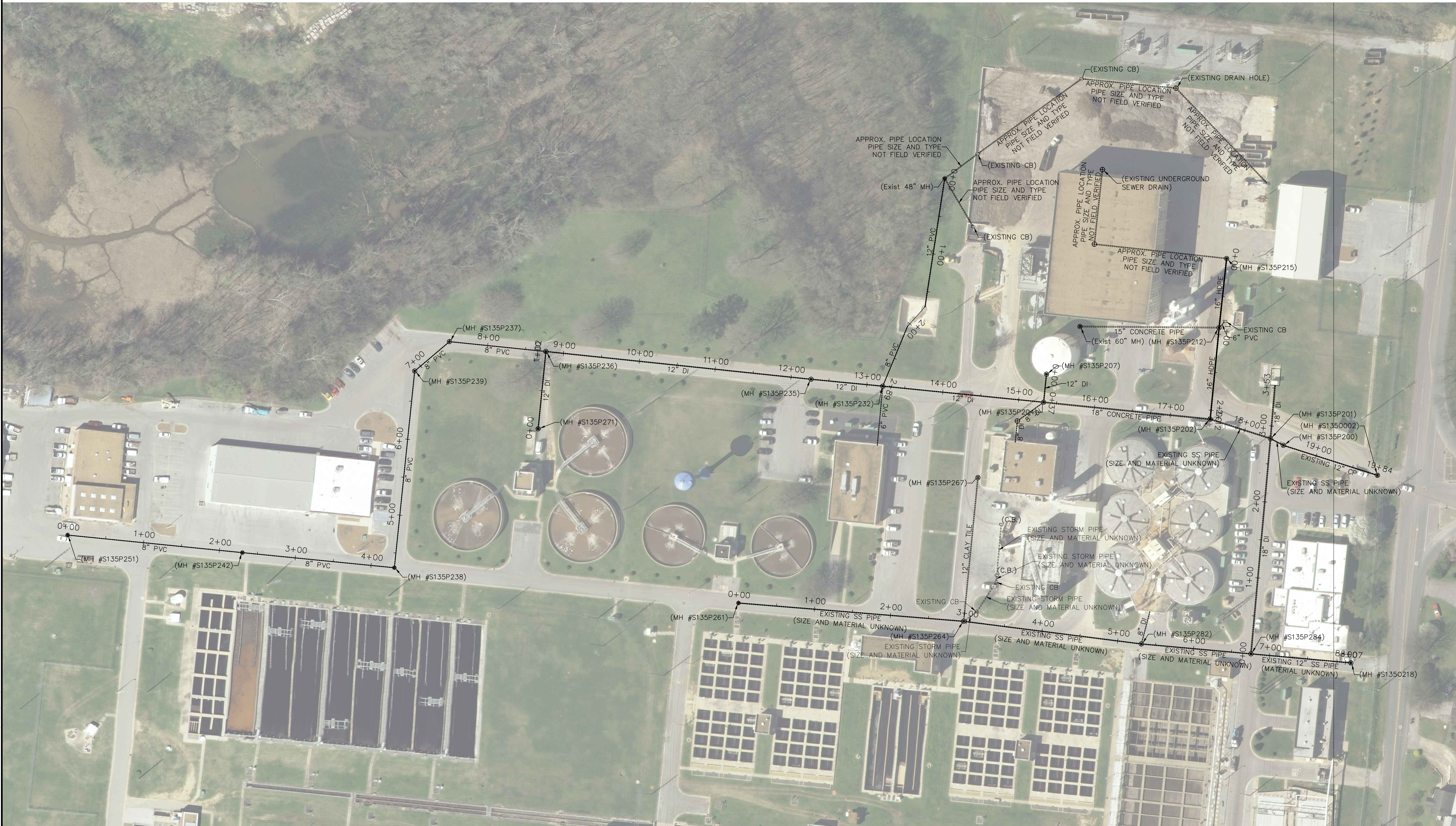
NRPS — NORTH RECYCLE PUMP STATION  
 OXT1 — OXYGENATION TANK #1  
 OXT2 — OXYGENATION TANK #2  
 OXT3 — OXYGENATION TANK #3  
 OXT4 — OXYGENATION TANK #4  
 PSPS — PRIMARY SLUDGE PUMP STATION  
 SC1 — SECONDARY CLARIFIER #1  
 SC2 — SECONDARY CLARIFIER #2  
 SPS — THICKENED SLUDGE PUMP STATION  
 SRPS — SOUTH RECYCLE PUMP STATION  
 SST — SLUDGE STORAGE TANK  
 ST1 — SLUDGE THICKENER #1  
 ST2 — SLUDGE THICKENER #2  
 ST3 — SLUDGE THICKENER #3  
 ST4 — SLUDGE THICKENER #4  
 ST5 — SLUDGE THICKENER #5  
 WG — WET WEATHER GRIT REMOVAL

NORTH RECYCLE  
 PIPE BREAKDOWN:  
 8" DI — 201 LF  
 8" PVC — 847 LF  
 12" CP — 130 LF  
 12" DI — 1,647 LF  
 12" PVC — 189 LF  
 15" CP — 183 LF  
 16" HDPE — 387 LF  
 18" CP — 220 LF  
 18" DI — 284 LF



October 2016 [https://drive.google.com/drive/u/0/folders/0BxMW0REcwU09NTRuMTJ5THNCZTA,](https://drive.google.com/drive/u/0/folders/0BxMW0REcwU09NTRuMTJ5THNCZTA)  
/s/ Justin C. Holland, Administrator  
City of Chattanooga  
Department of Public Works



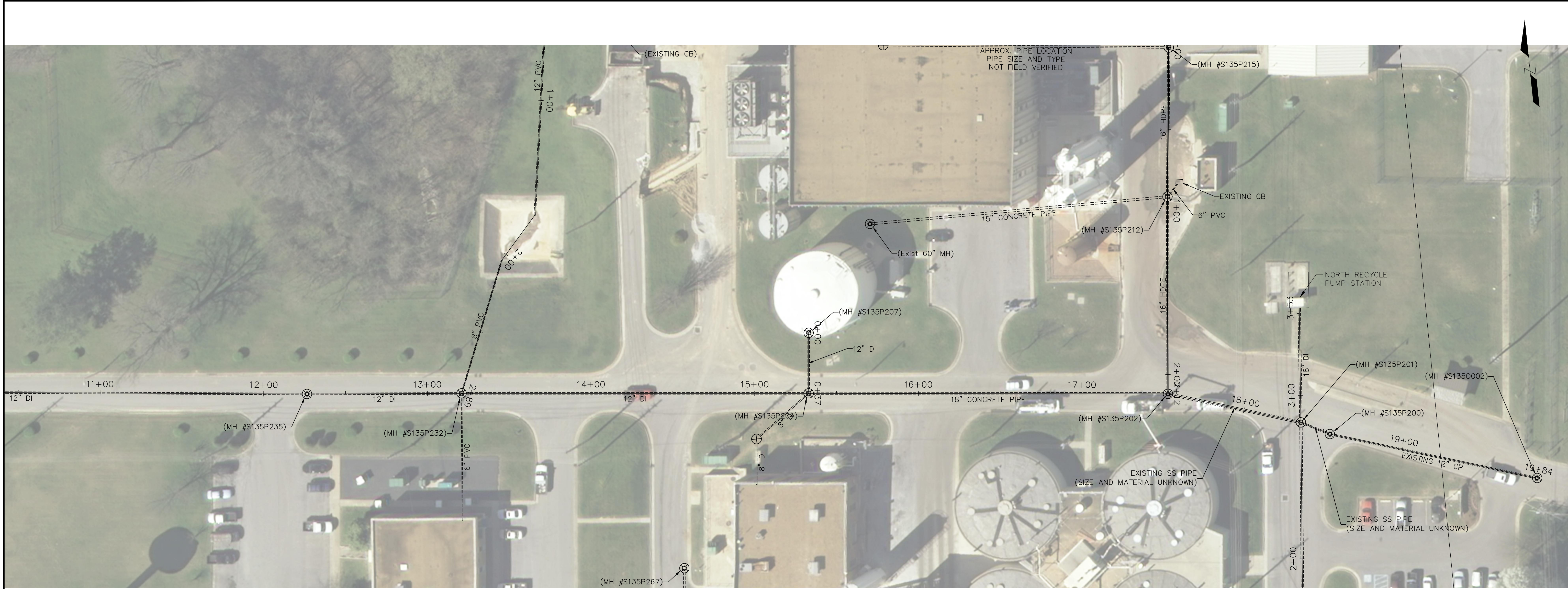


PAGE: 1 OF 6

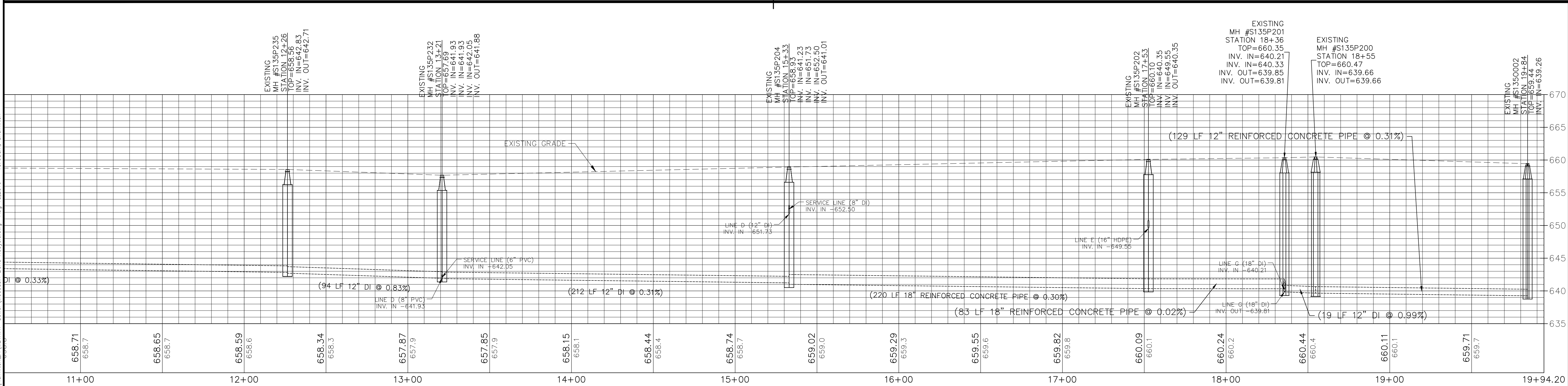








LINE A – PLAN VIEW



LINE A – PROFILE VIEW



CITY OF  
CHATTANOOGA  
DEPARTMENT OF  
PUBLIC WORKS  
ENGINEERING  
DIVISION

ADMINISTRATOR:  
JUSTIN C. HOLLAND  
CITY ENGINEER:  
WILLIAM C. PAYNE, P.E.

MOCCASIN BEND WASTE WATER TREATMENT PLANT  
NORTH RECYCLE PUMP STATION REHABILITATION  
CHATTANOOGA, TENNESSEE

NO.	DATE	REVISION	SIG.

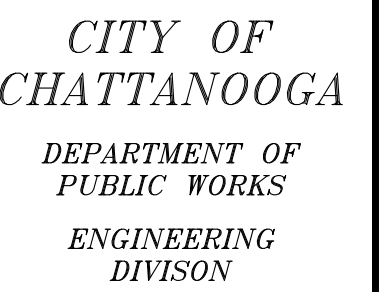
CONTRACT# W-15-007  
SCALE: 1"=30'  
DRAWN: JAH  
DESIGN:  
CHECKED:

**PRELIMINARY  
(SUBJECT TO  
CHANGE)**

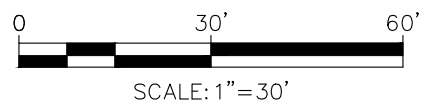








*END WASTE WATER TREATMENT PLANT  
CYCLE PUMP STATION REHABILITATION  
CHATTANOOGA, TENNESSEE*



This profile view illustrates the sanitary sewer system layout. The horizontal axis represents stationing from -0+00 to 8+00, with a final offset of +17.14. The vertical axis shows elevations from 635 to 670 feet. The profile includes several manholes (MH) and manholes with pumps (MHP) at various stations. Existing sewer lines are shown as dashed lines, while proposed lines are solid. A storm sewer is also indicated. The profile shows a general upward trend in elevation from left to right, with a significant drop at the final station.

Station	Structure	Top Elevation (ft)	Invert Elevation (ft)	Notes
-0+00	Existing MH #513SP261	659.42	659.42	INV. OUT=644.12
3+00	Existing MH #513SP264	659.19	659.19	INV. IN=653.34
5+00	Existing MH #513SP282	660.14	660.14	INV. IN=642.78, INV. OUT=641.15
7+00	Existing MH #513SP284	660.43	660.43	INV. IN=641.01, INV. OUT=640.96
8+00	Existing MH #513SP218	660.36	660.36	INV. IN=640.70

SCALE:  
1"=30' HORZ.  
1"=5' VERT.

SHEET: 5 OF 6



