

**ADDENDUM ONE**  
**RIVERWALK PHASE 4 (Middle Street to Incline Railway**  
**CONTRACT NO. T-14-021201**  
**CITY OF CHATTANOOGA, TENNESSEE**

The following changes shall be made to the Contract Documents, Specifications, and Drawings:

**I. Clarifications:**

1.6 The concept plan on the following page illustrates the functional and operational goals for the project on St. Elmo Avenue from Middle Street to Tennessee Avenue.

Drawings: RFQ Plan Set  
Riverwalk IV

June 24, 2016

---

/s/ Blythe Bailey, Administrator  
City of Chattanooga  
Department of Transportation

CITY OF CHATTANOOGA, TENNESSEE  
CONTRACT #T-14-021  
RIVERWALK EXTENSION  
ALONG ST. ELMO AVENUE  
(FROM W. 32TH ST. TO TENNESSEE AVE.)

DRAWING INDEX

TITLE

PLAN/PROFILE: STA. 0+00 - 6+00  
PLAN/PROFILE: STA. 6+00 - 12+00  
PLAN/PROFILE: STA. 12+00 - 18+00  
PLAN/PROFILE: STA. 18+00 - 24+00  
PLAN/PROFILE: STA. 24+00 - 30+00  
PLAN/PROFILE: STA. 30+00 - 35+75  
PLAN: SHARED SPACE STA. 35+75 - END  
CROSS SECTIONS: 0+00 - 9+50  
CROSS SECTIONS: 10+00 - 17+50  
CROSS SECTIONS: 18+00 - 25+50  
CROSS SECTIONS: 26+00 - 33+50  
CROSS SECTIONS: 34+00 - 35+00

DRAWING NO.

1  
2  
3  
4  
5  
6  
7  
8  
9  
10  
11  
12

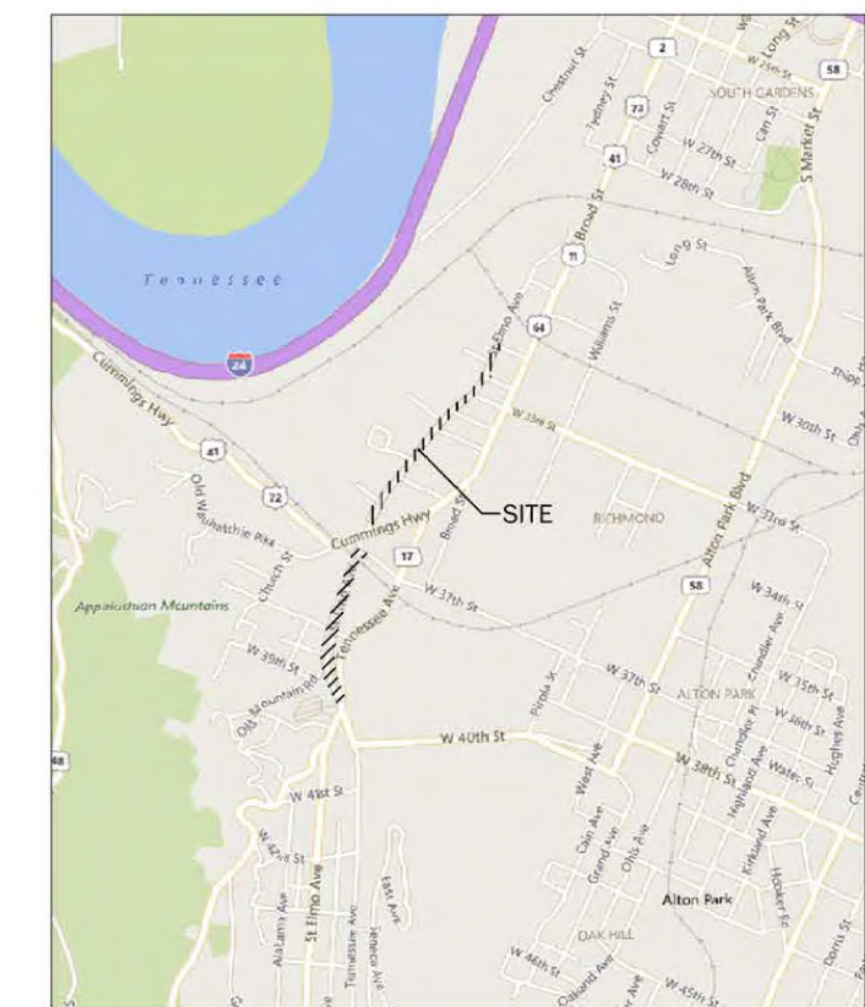
PRELIMINARY  
(SUBJECT TO  
CHANGE)

XXXX, P.E.  
TITLE  
STATE LICENSE NO. XXXXX

DATE

APPROVED FOR RELEASE  
BERTRAN R. KUYRKENDALL, P.E.  
CITY TRANSPORTATION ENGINEER

DATE



LOCATION MAP

MAYOR

ANDY BERKE

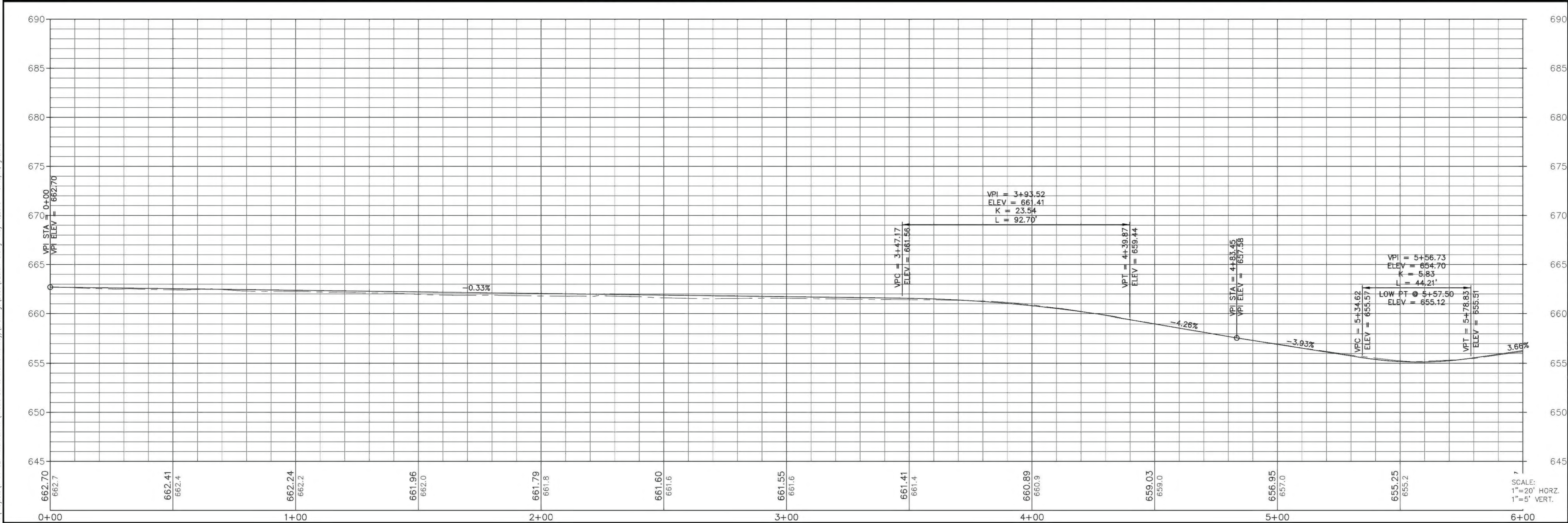
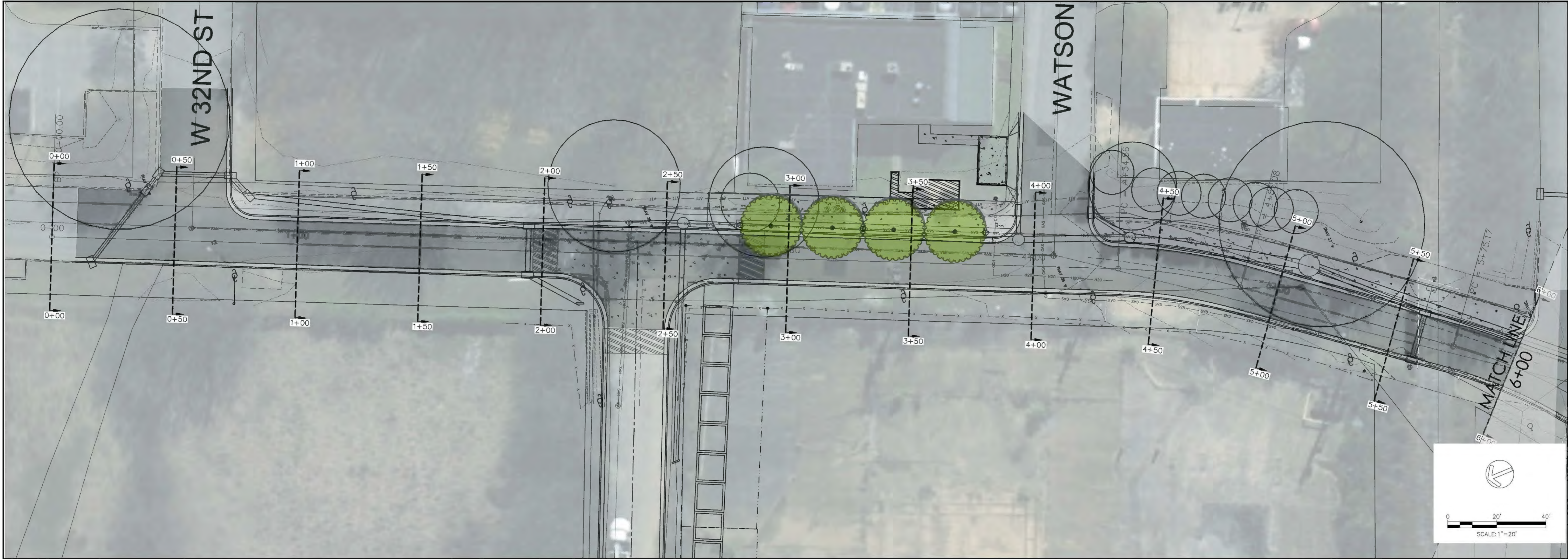
CITY COUNCIL


DISTRICT 1 - CHIP HENDERSON  
DISTRICT 2 - JERRY MITCHELL, VICE-CHAIRPERSON  
DISTRICT 3 - KEN SMITH  
DISTRICT 4 - LARRY GROHN  
DISTRICT 5 - RUSSELL GILBERT  
DISTRICT 6 - CAROL B. BERZ  
DISTRICT 7 - CHRIS ANDERSON  
DISTRICT 8 - MOSES FREEMAN, CHAIRPERSON  
DISTRICT 9 - YUSUF HAKEEM

DEPARTMENT OF TRANSPORTATION

J. BLYTHE BAILEY, ADMINISTRATOR

T:\Projects\T-14-021 Riverwalk IV (Middle St. to Incline Railway)\Drawings\Basic\DESIGN-3.dwg    May 10, 2016    - 3:49pm, ghr00d





**CITY OF CHATTANOOGA**  
DEPARTMENT OF TRANSPORTATION

BLYTHE BAILEY  
BERTRAN KUYRENDALL, P.E.

**CONTRACT #T-14-021**  
**RIVERWALK EXTENSION**  
**ALONG ST. ELMO AVENUE**  
**(FROM W. 32TH ST. TO TENNESSEE AVE.)**

NO.	DATE	REVISION	SIG.
0			

CONTRACT# T-14-021

SCALE: 1" = 20'

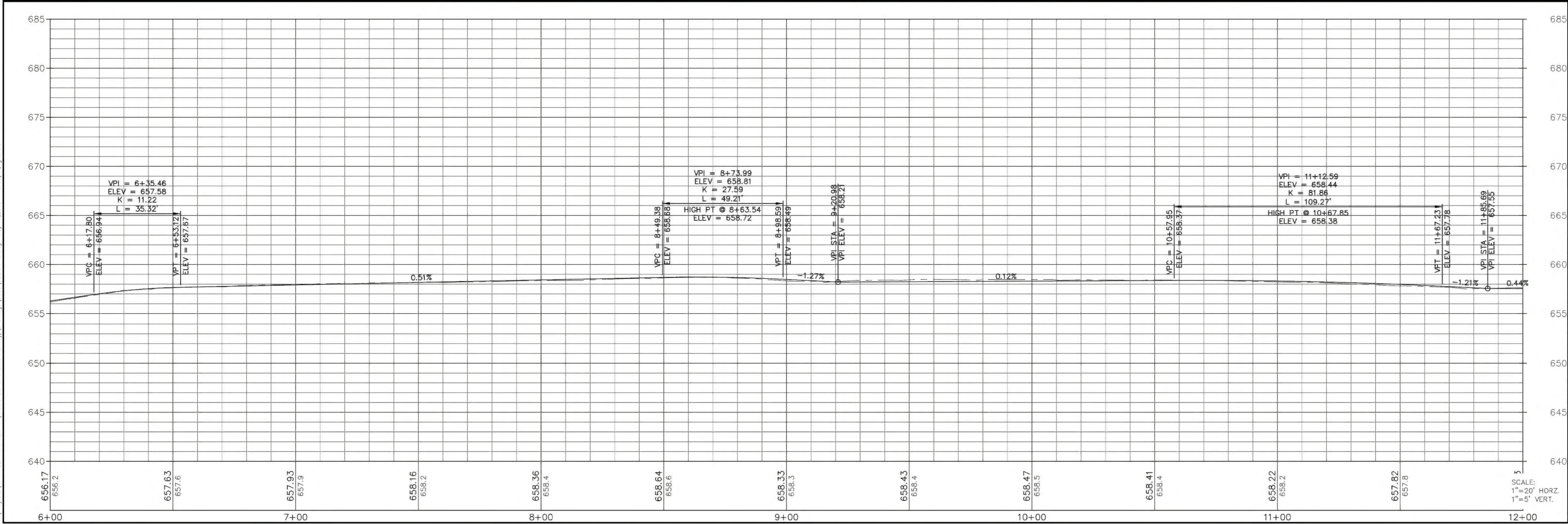
DRAWN: GEH

DESIGN: GEH

CHECKED: BCS

**PRELIMINARY**  
**(SUBJECT TO CHANGE)**

SHEET: 1 OF 12





**CITY OF CHATTANOOGA**  
DEPARTMENT OF TRANSPORTATION

BLTHE BAILEY  
BERTRAN KUYRENDALL, P.E.

**CONTRACT #T-14-021**  
**RIVERWALK EXTENSION**  
**ALONG ST. ELMO AVENUE**  
**(FROM W. 32TH ST. TO TENNESSEE AVE.)**

NO.	DATE	REVISION	SIG.
0			

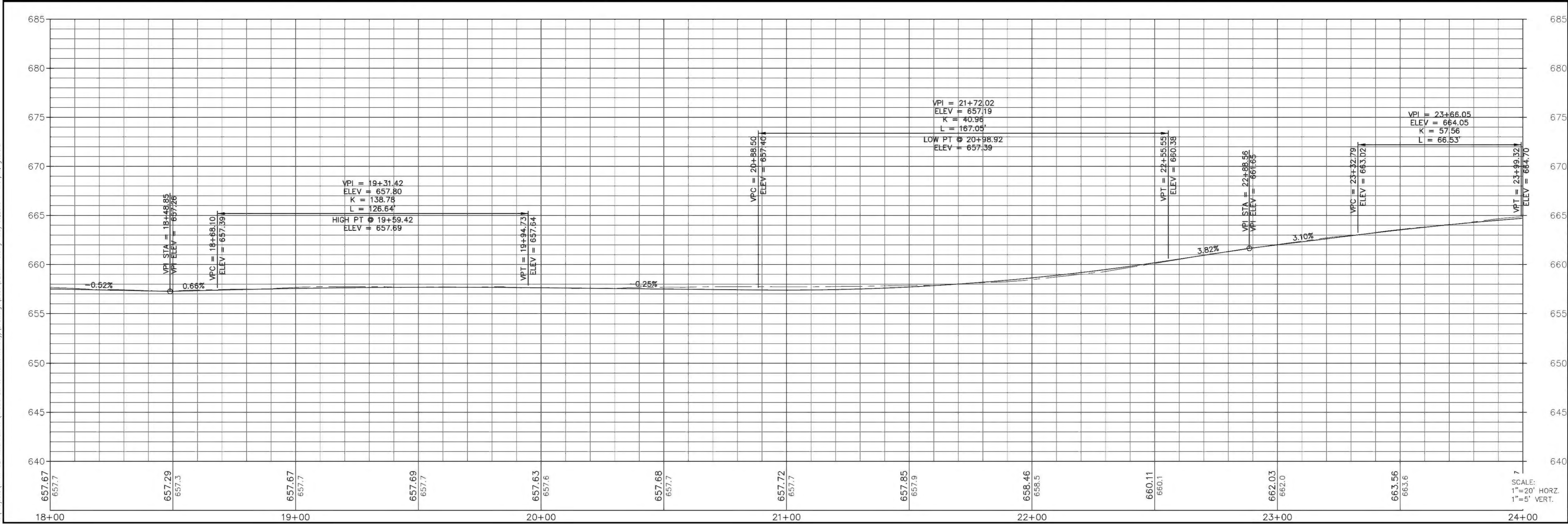
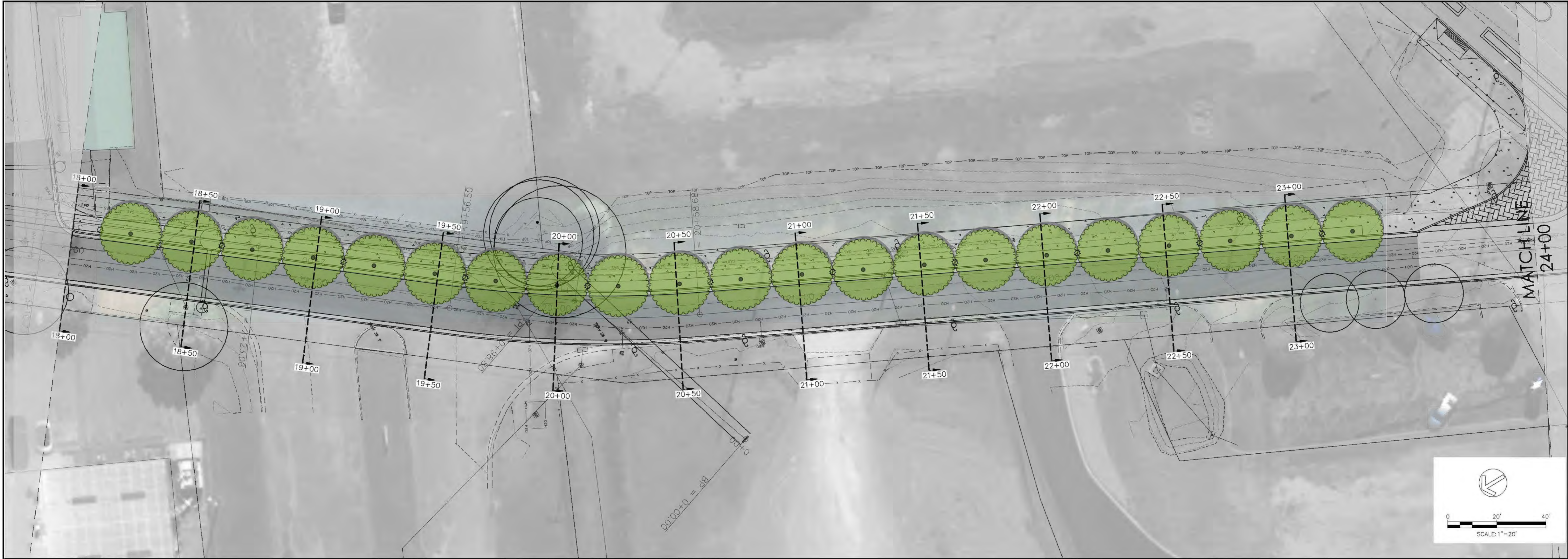
CONTRACT# T-14-021  
SCALE: 1" = 20'  
DRAWN: GEH  
DESIGN: GEH  
CHECKED: BCS

**PRELIMINARY**  
**(SUBJECT TO CHANGE)**

SHEET: 2 OF 12



T:\Projects\T-14-021 Riverwalk IV (Middle St. to Incline Railway)\Drawings\Basic\DESIGN-3.dwg    May 10, 2016    - 4:01pm    ghould





**CITY OF CHATTANOOGA**  
DEPARTMENT OF TRANSPORTATION

BLYTHE BAILEY  
BERTRAN KUYRENDALL, P.E.

**CONTRACT #T-14-021**  
**RIVERWALK EXTENSION**  
**ALONG ST. ELMO AVENUE**  
**(FROM W. 32TH ST. TO TENNESSEE AVE.)**

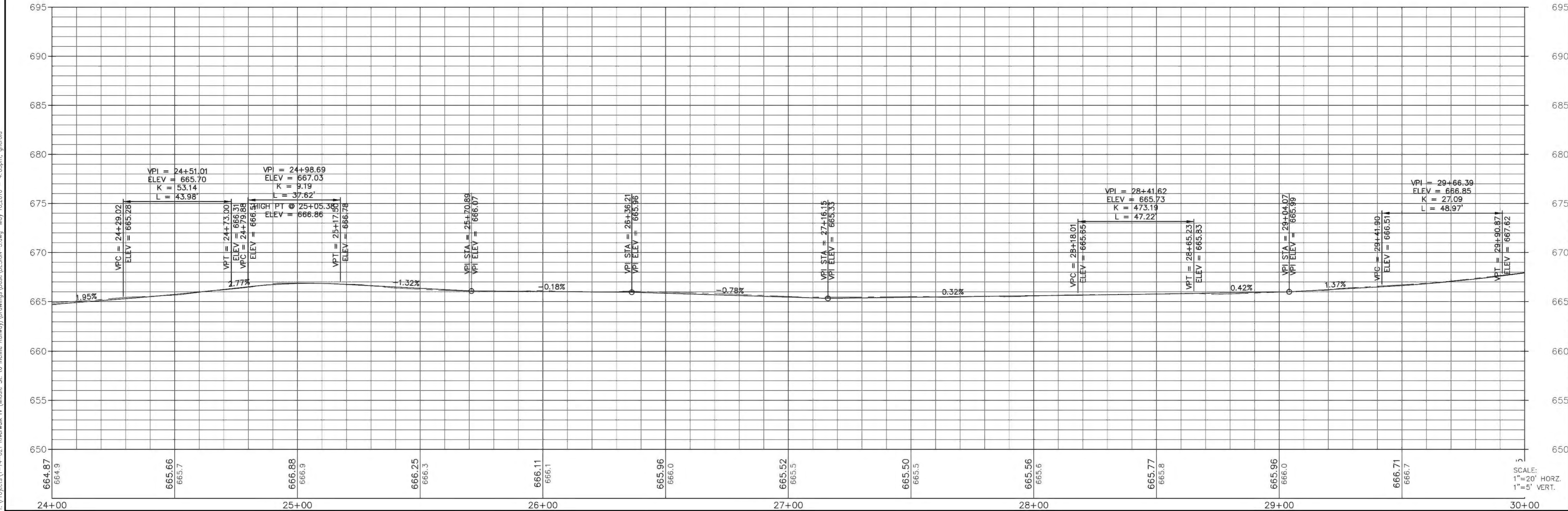
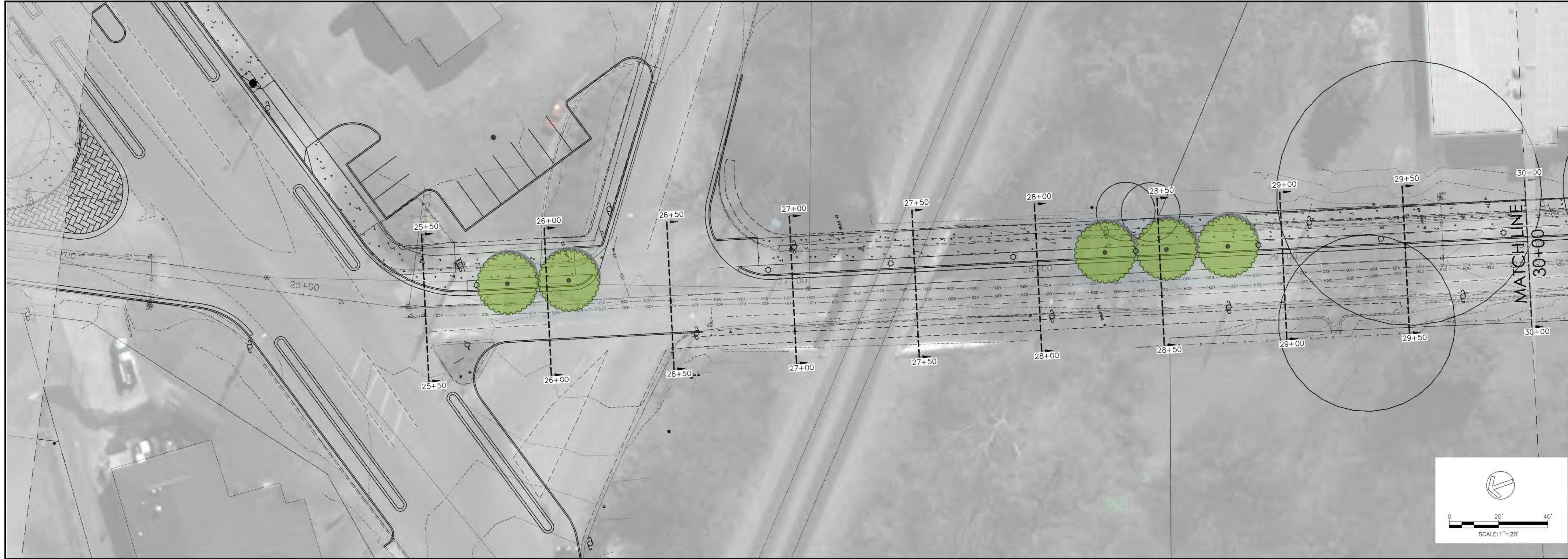
NO.	DATE	REVISION	SIG.
0			

CONTRACT# T-14-021  
SCALE: 1" = 20'  
DRAWN: GEH  
DESIGN: GEH  
CHECKED: BCS

**PRELIMINARY**  
**(SUBJECT TO CHANGE)**

SHEET: 4 OF 12

T:\Projects\T-14-021 Riverwalk IV (Middle St. to Incline Railway)\Drawings\Basic\DESIGN-3.dwg    May 10, 2016    = 4:05pm, ghorold



**CITY OF CHATTANOOGA**  
DEPARTMENT OF TRANSPORTATION

BLYTHE BAILEY  
BERTRAN KUYRKENDALL, P.E.

**CONTRACT #T-14-021**  
**RIVERWALK EXTENSION**  
**ALONG ST. ELMO AVENUE**  
**(FROM W. 32TH ST. TO TENNESSEE AVE.)**

NO.	DATE	REVISION	SIG.
0			

CONTRACT# T-14-021

SCALE: 1" = 20'

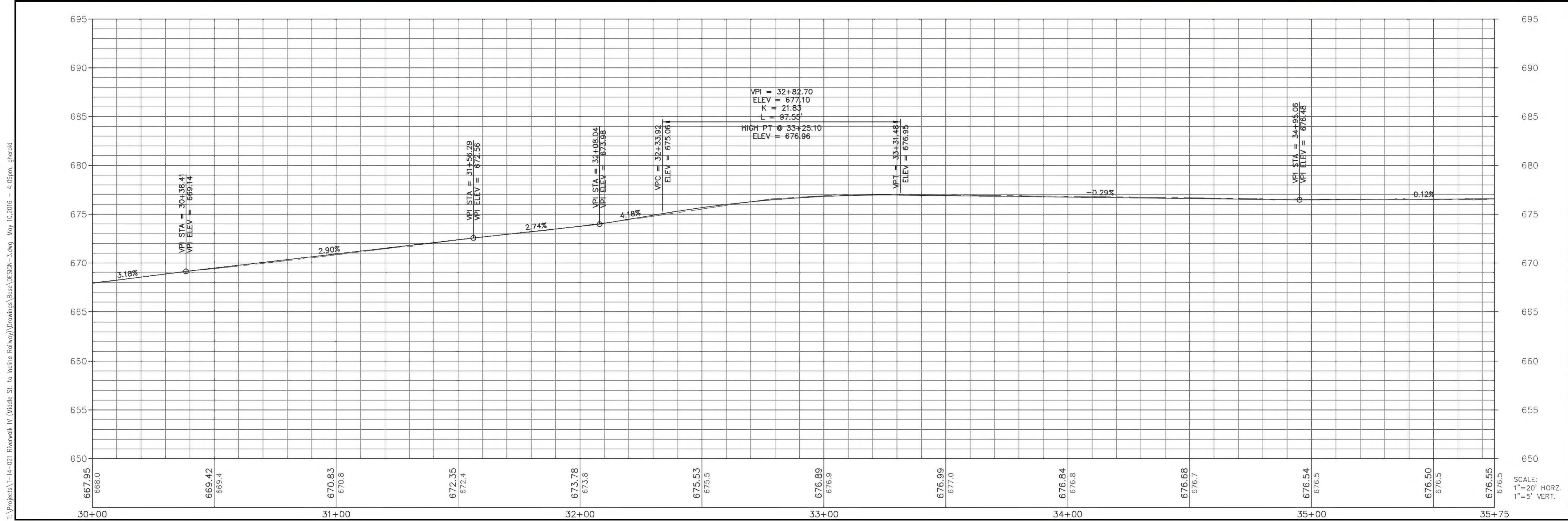
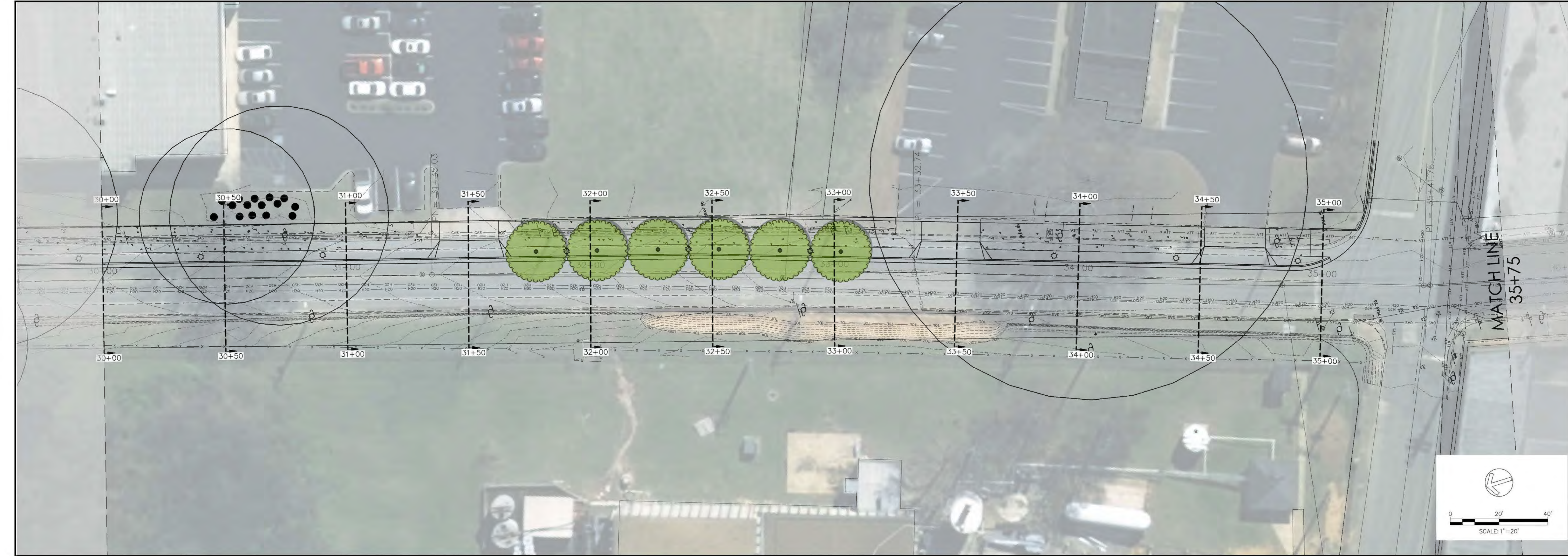
DRAWN: GEH


DESIGN: GEH

CHECKED: BCS

**PRELIMINARY**  
**(SUBJECT TO CHANGE)**

SHEET: 5 OF 12





**CITY OF CHATTANOOGA**  
DEPARTMENT OF TRANSPORTATION

BLYTHE BAILEY  
BERTRAN KUYRKENDALL, P.E.

**CONTRACT #T-14-021**  
**RIVERWALK EXTENSION**  
**ALONG ST. ELMO AVENUE**  
**(FROM W. 32TH ST. TO TENNESSEE AVE.)**

NO.	DATE	REVISION	SIG.
0			

CONTRACT# T-14-021  
SCALE: 1" = 20'  
DRAWN: GEH  
DESIGN: GEH  
CHECKED: BCS

**PRELIMINARY**  
**(SUBJECT TO CHANGE)**

SHEET: 5 OF 12



BERTRAN KUYRKENDALL, P.E.

CONTRACT # 1-14-U21  
RIVERWALK EXTENSION  
ALONG ST. ELMO AVENUE  
(FROM W. 32TH ST. TO TENNESSEE AVE.)

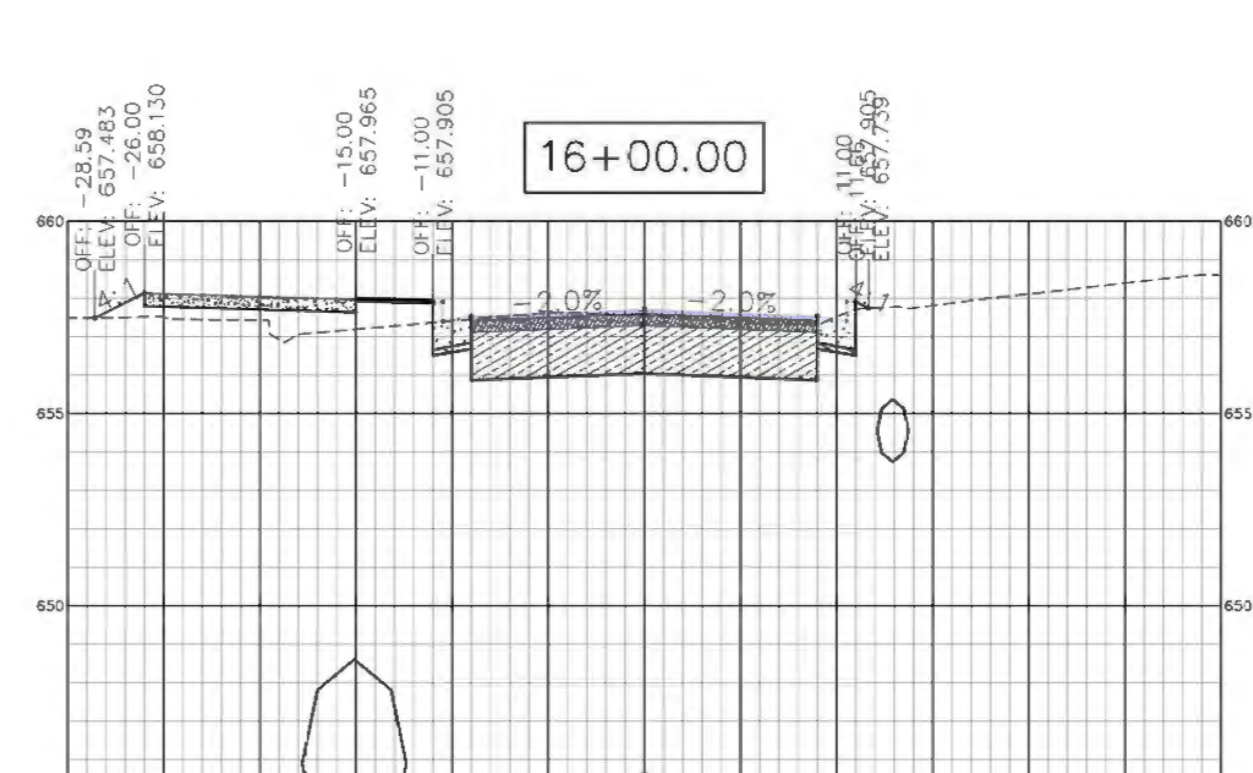
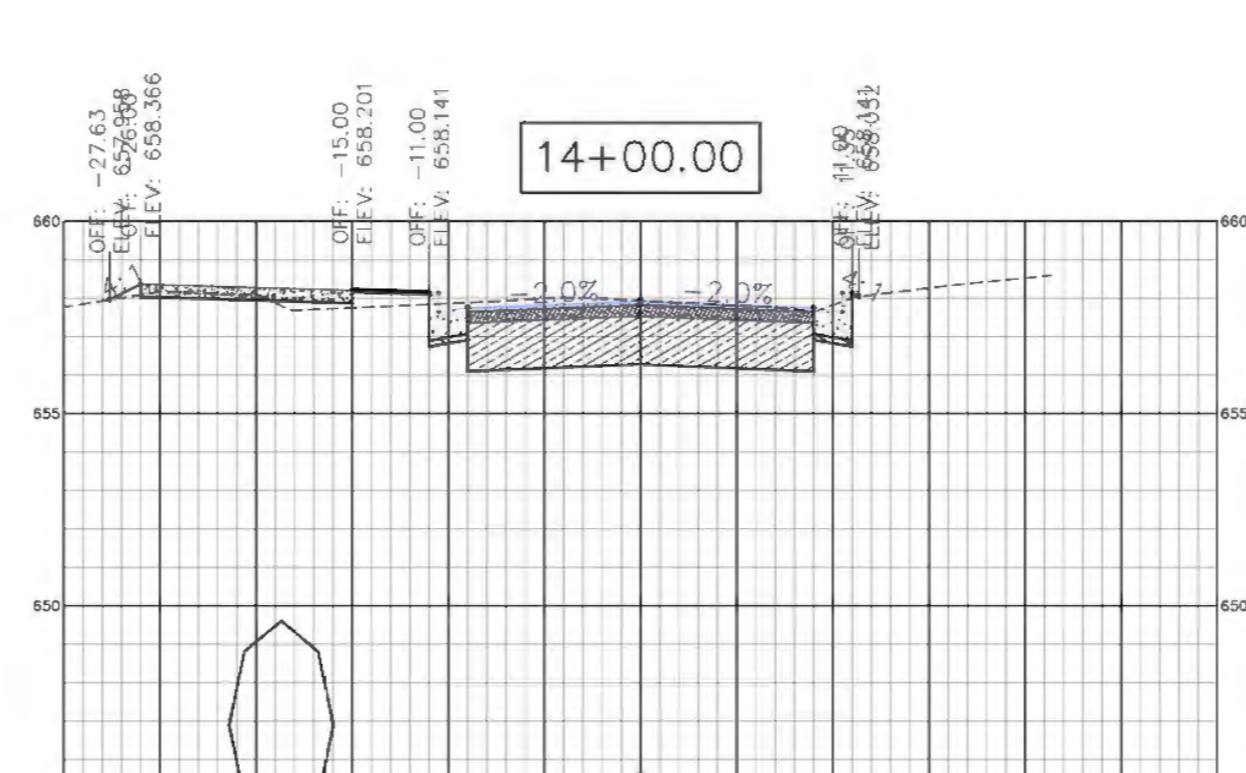
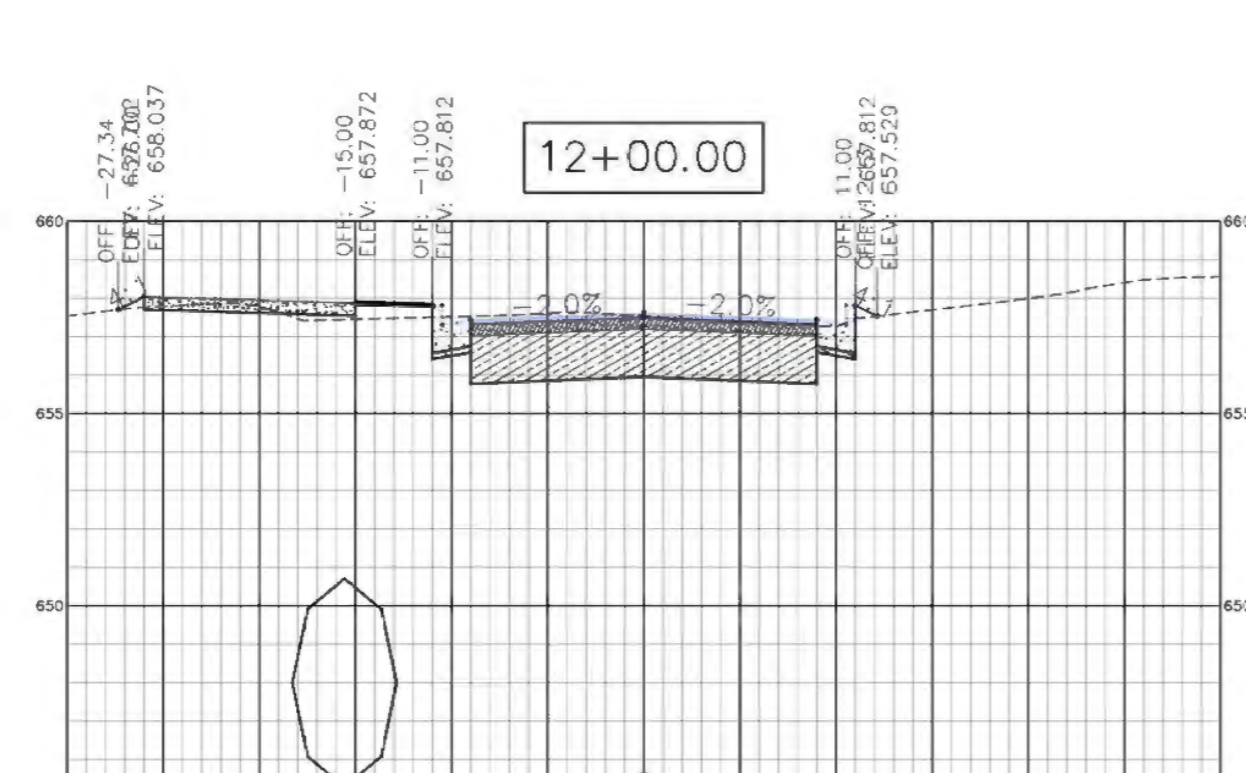
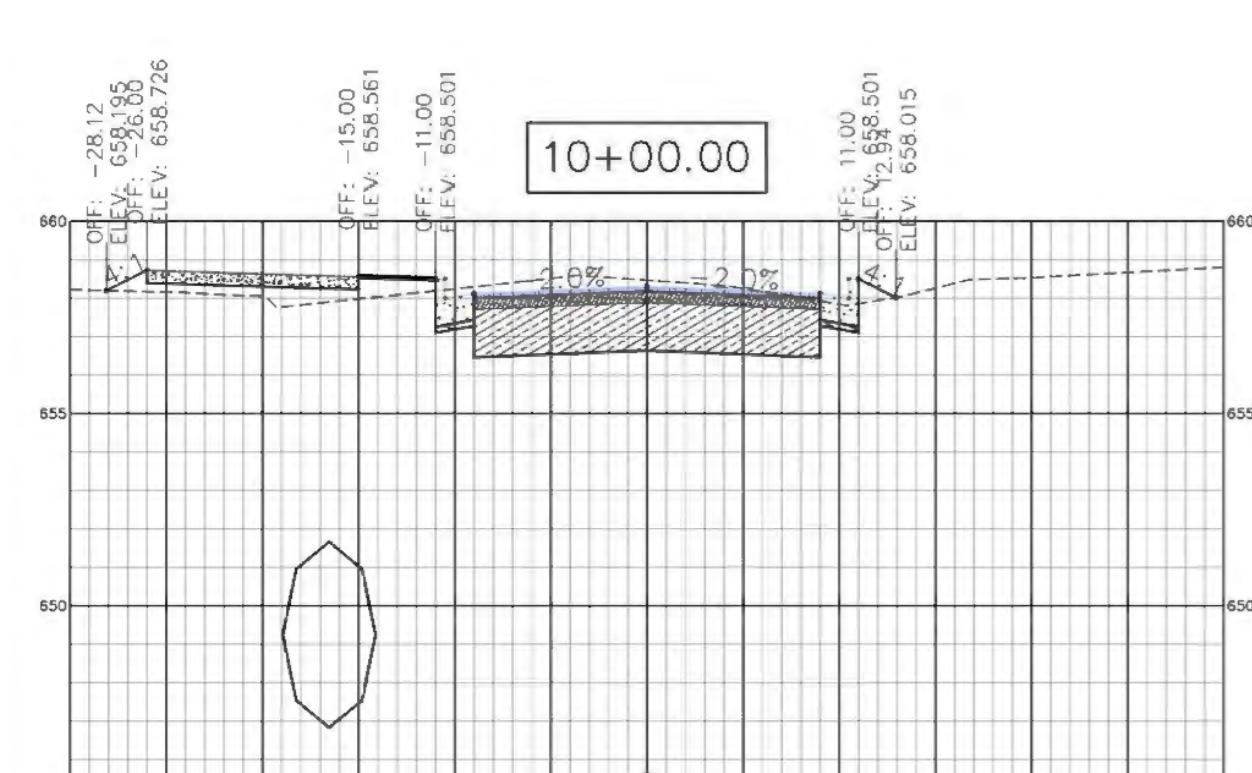
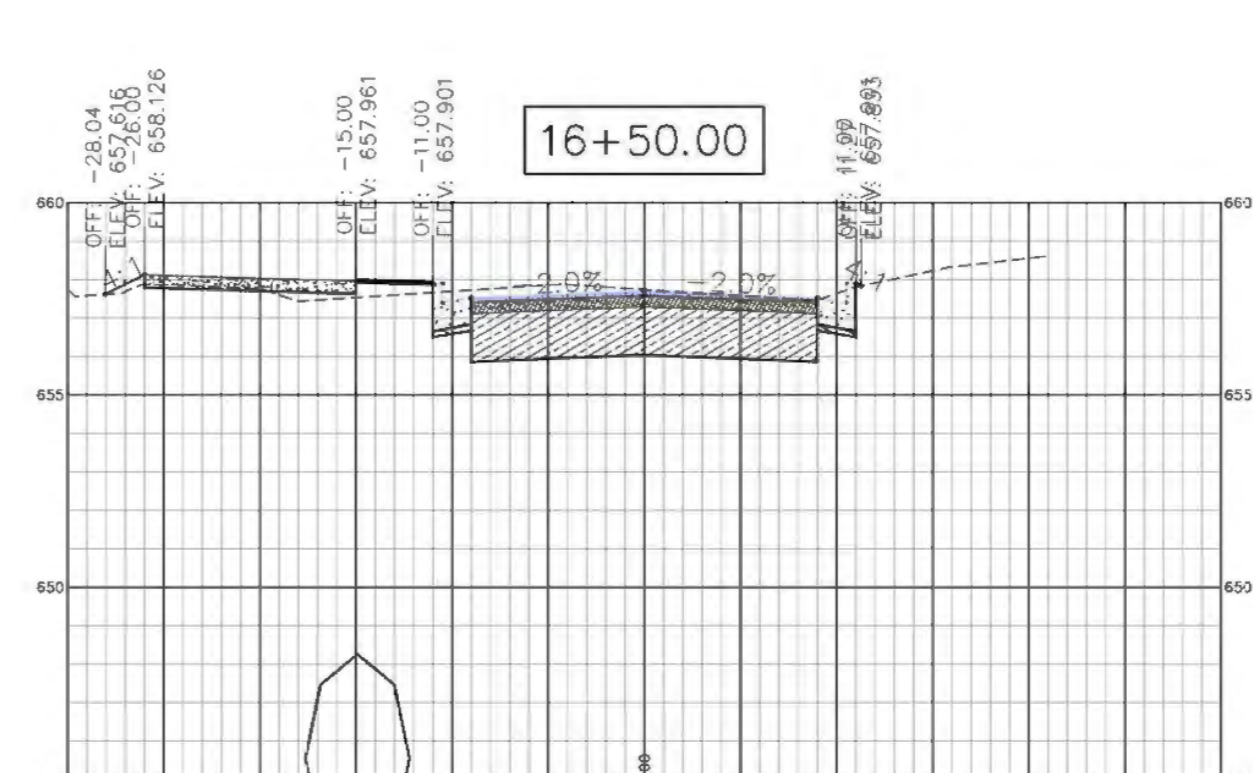
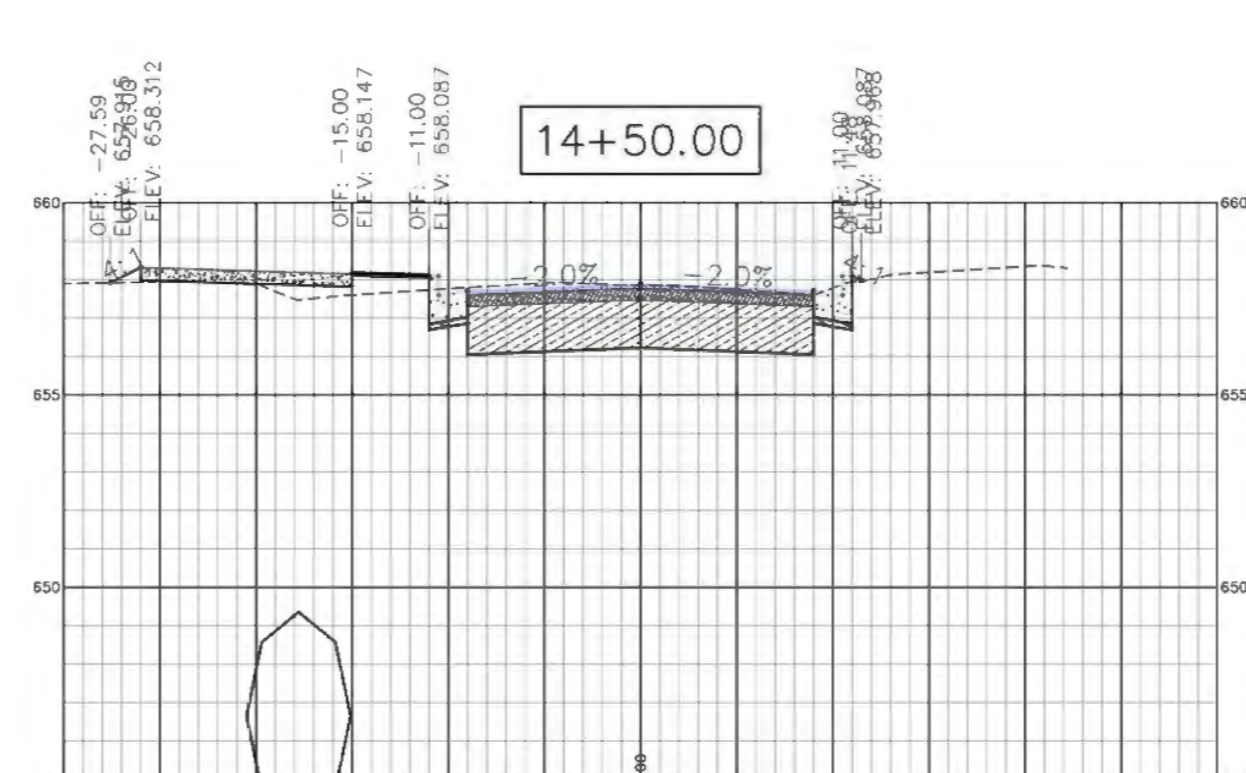
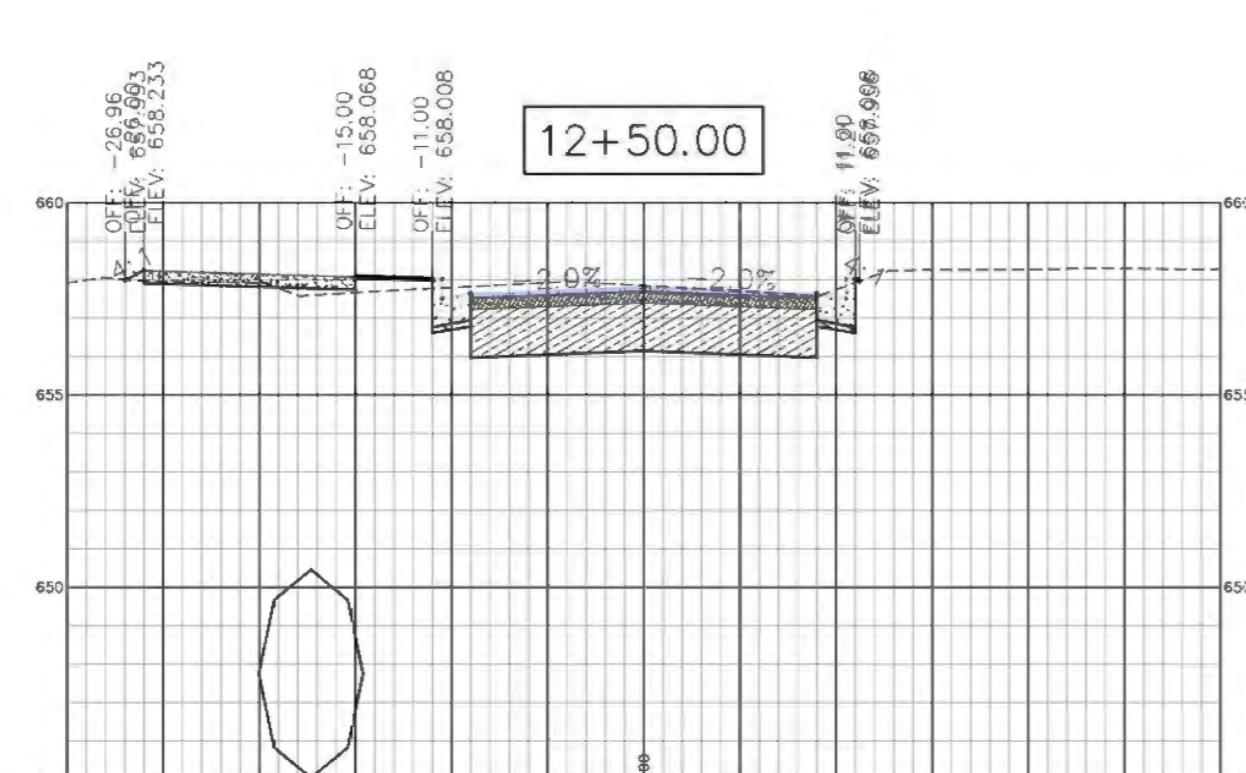
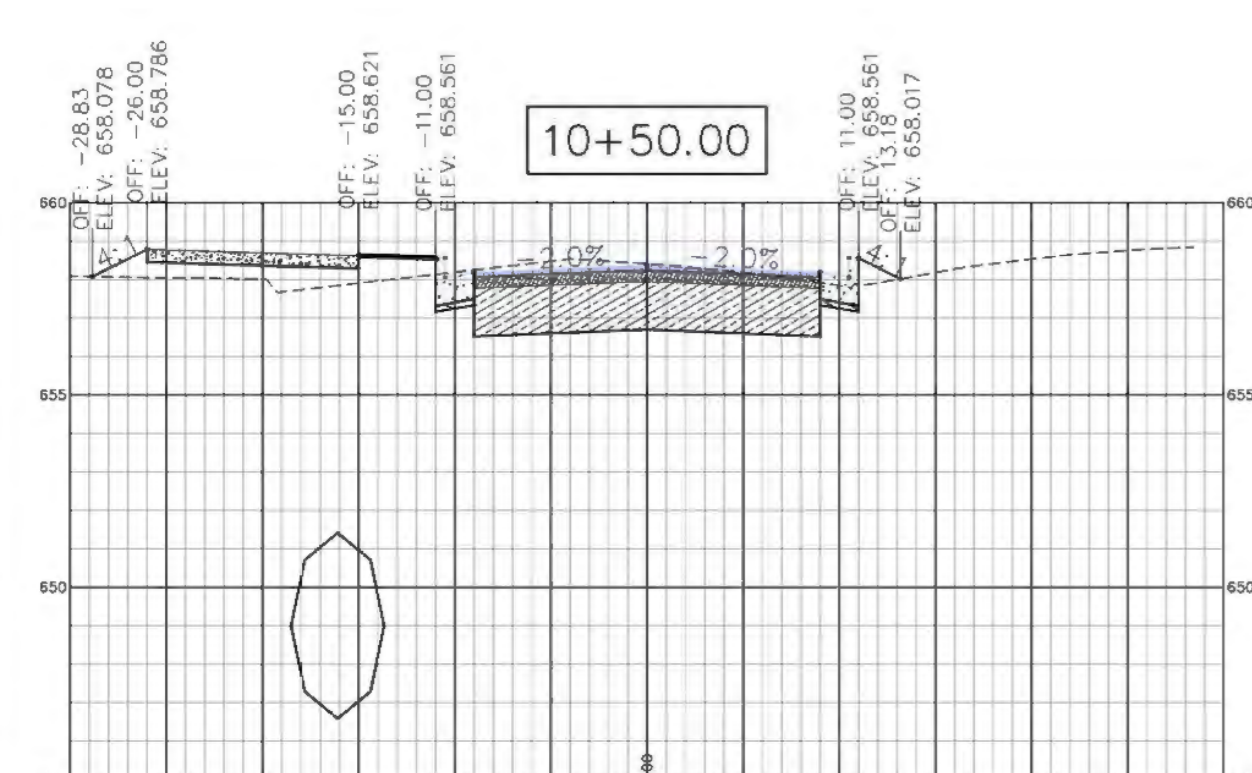
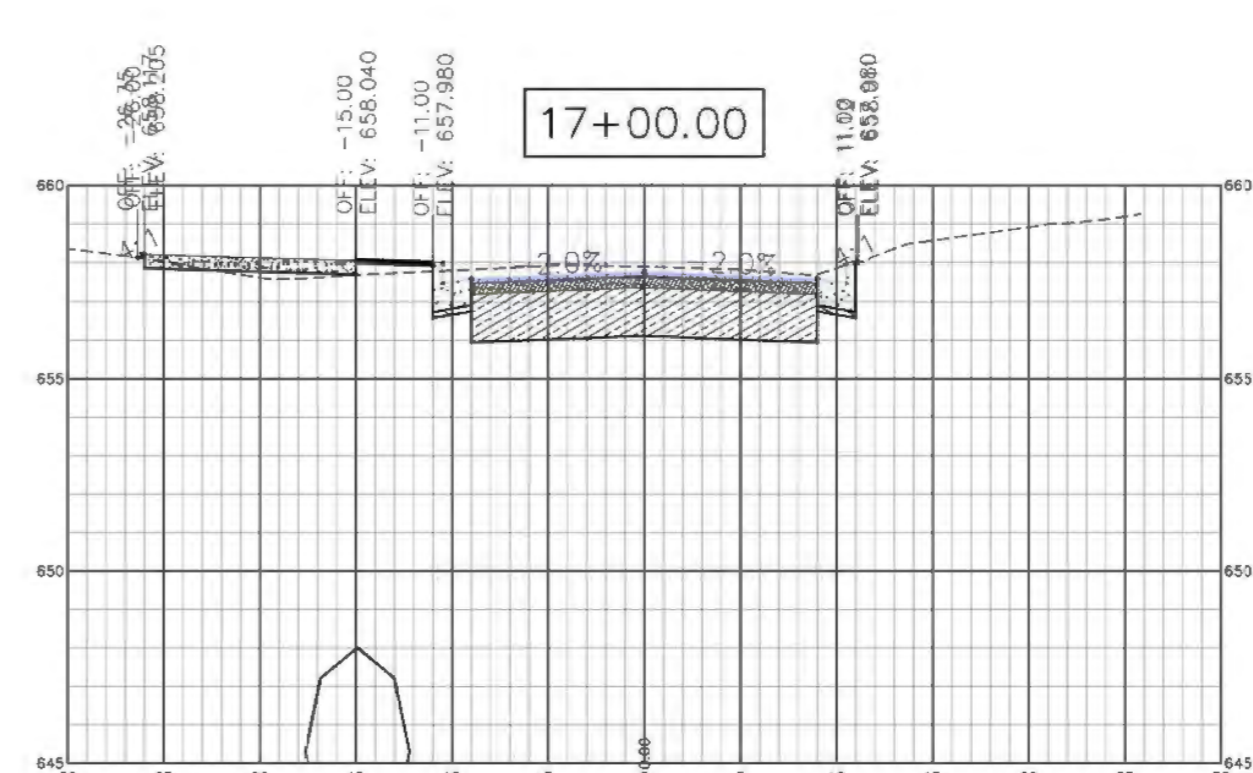
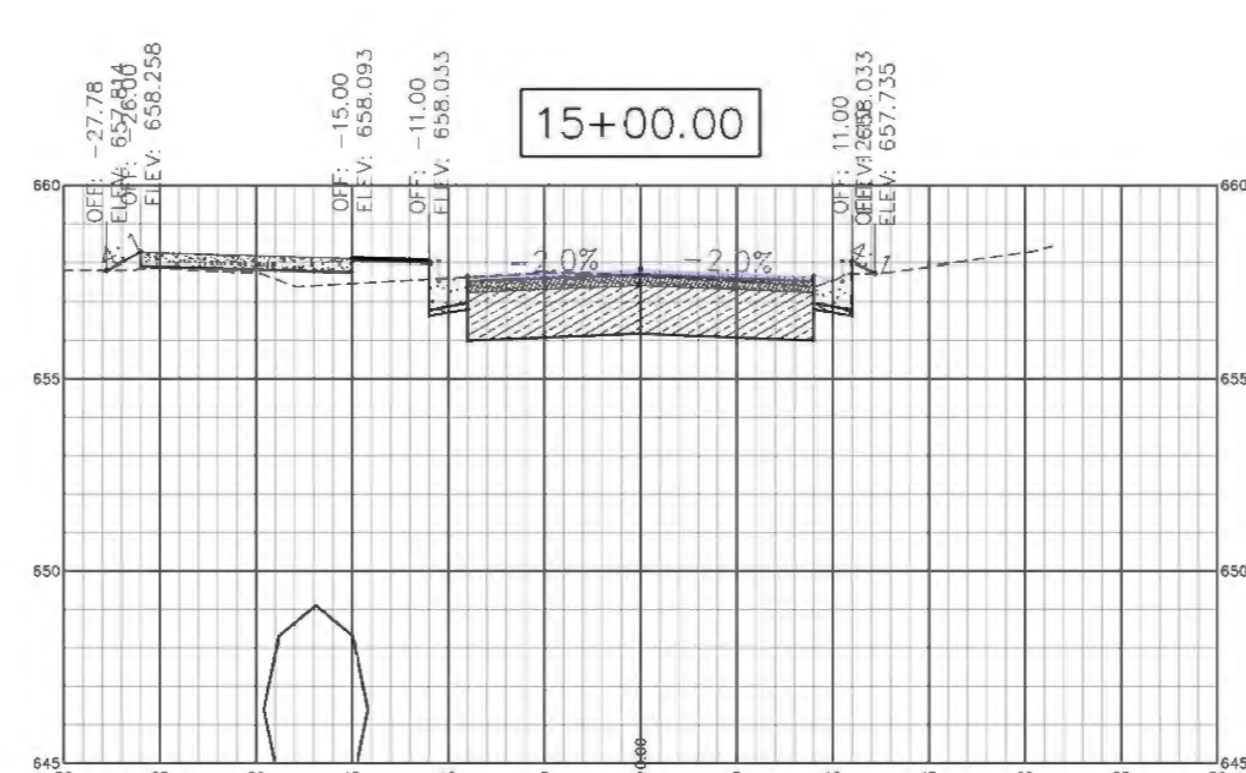
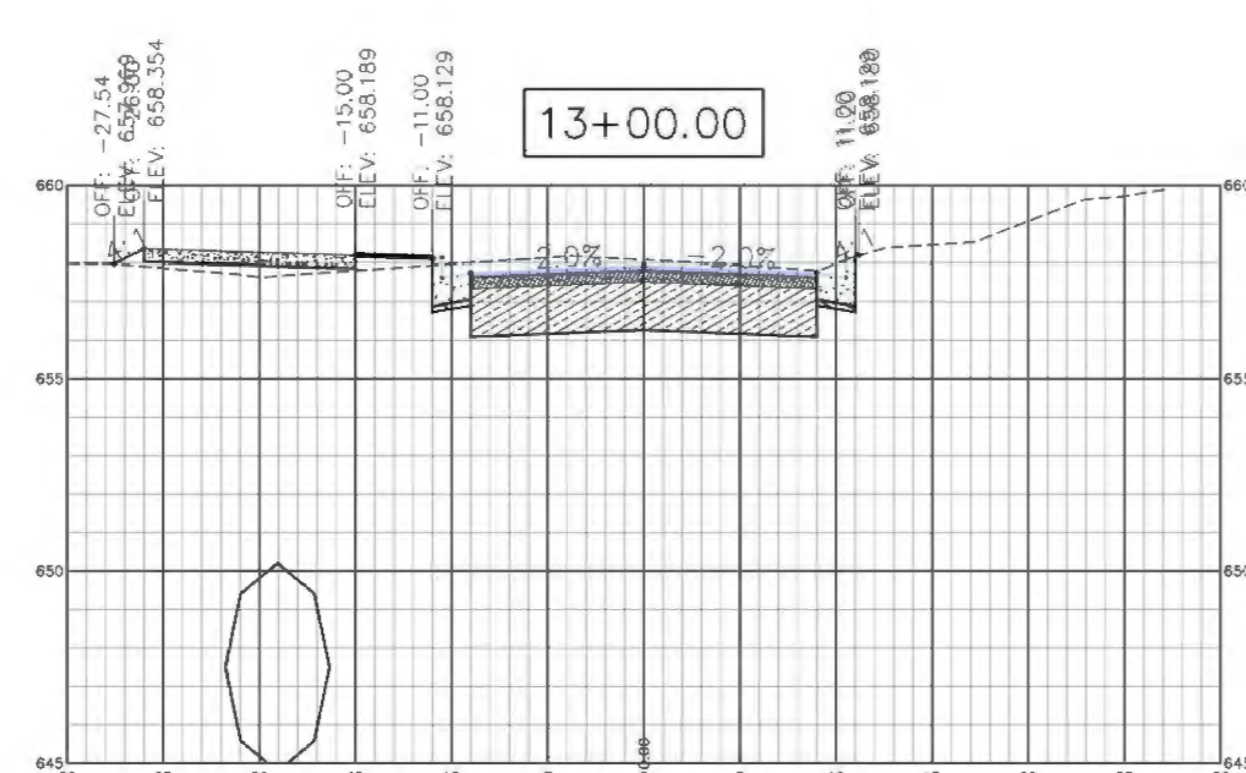
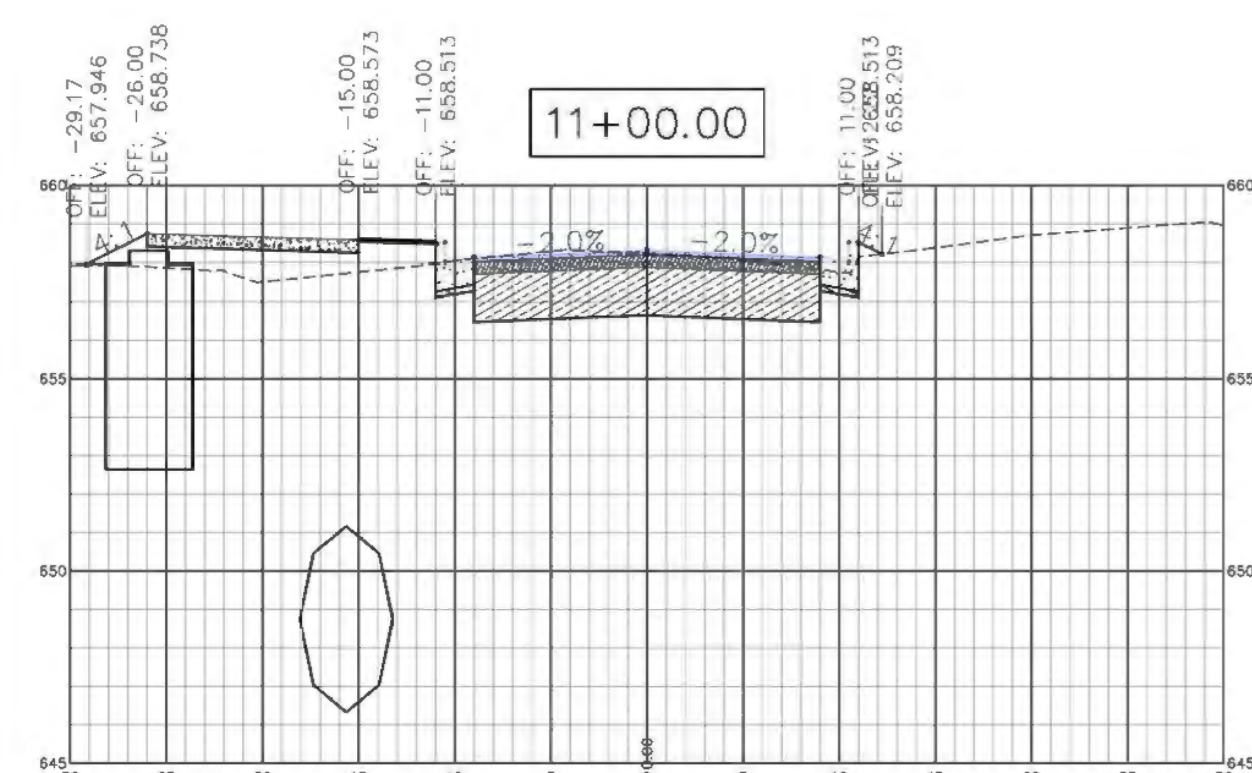
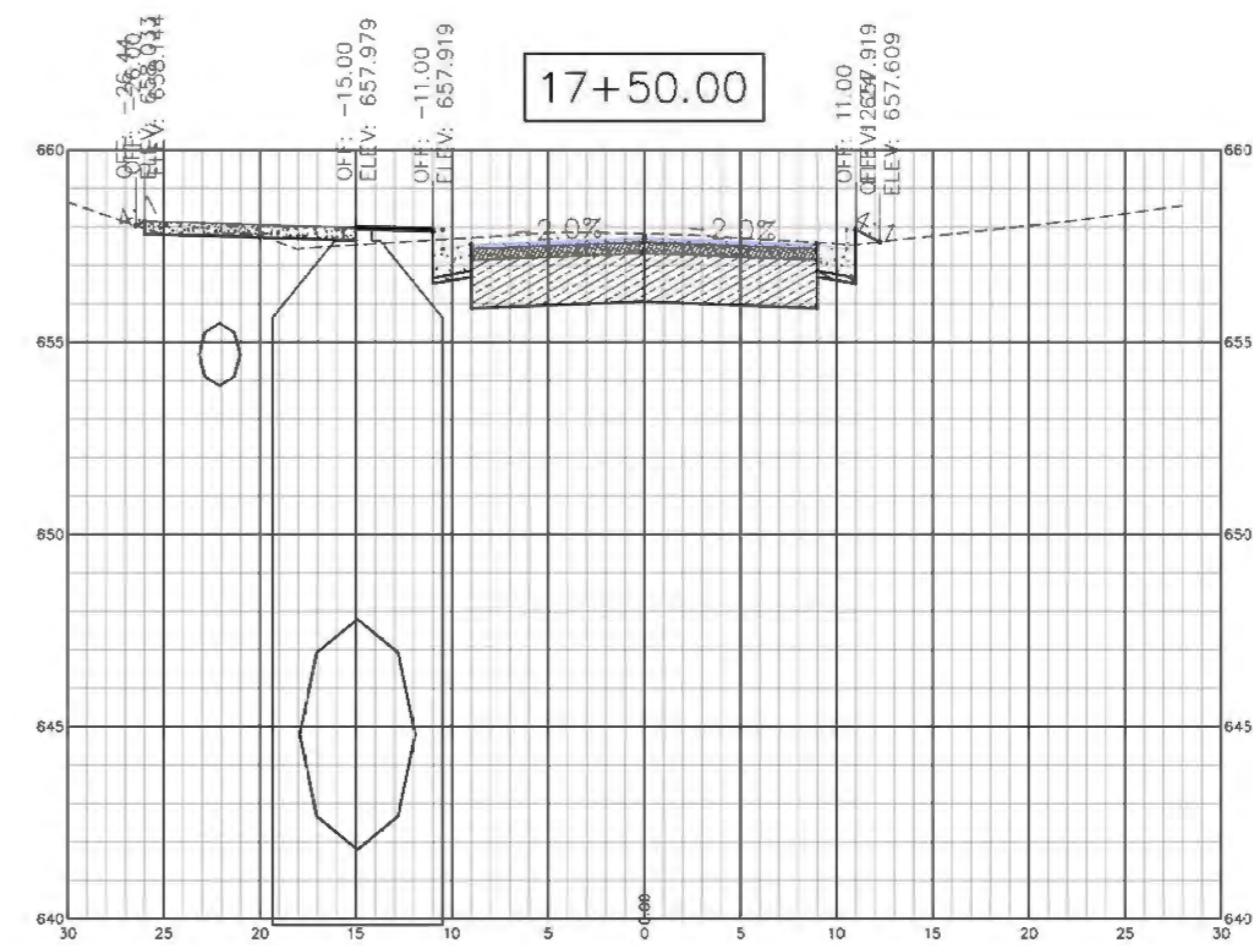
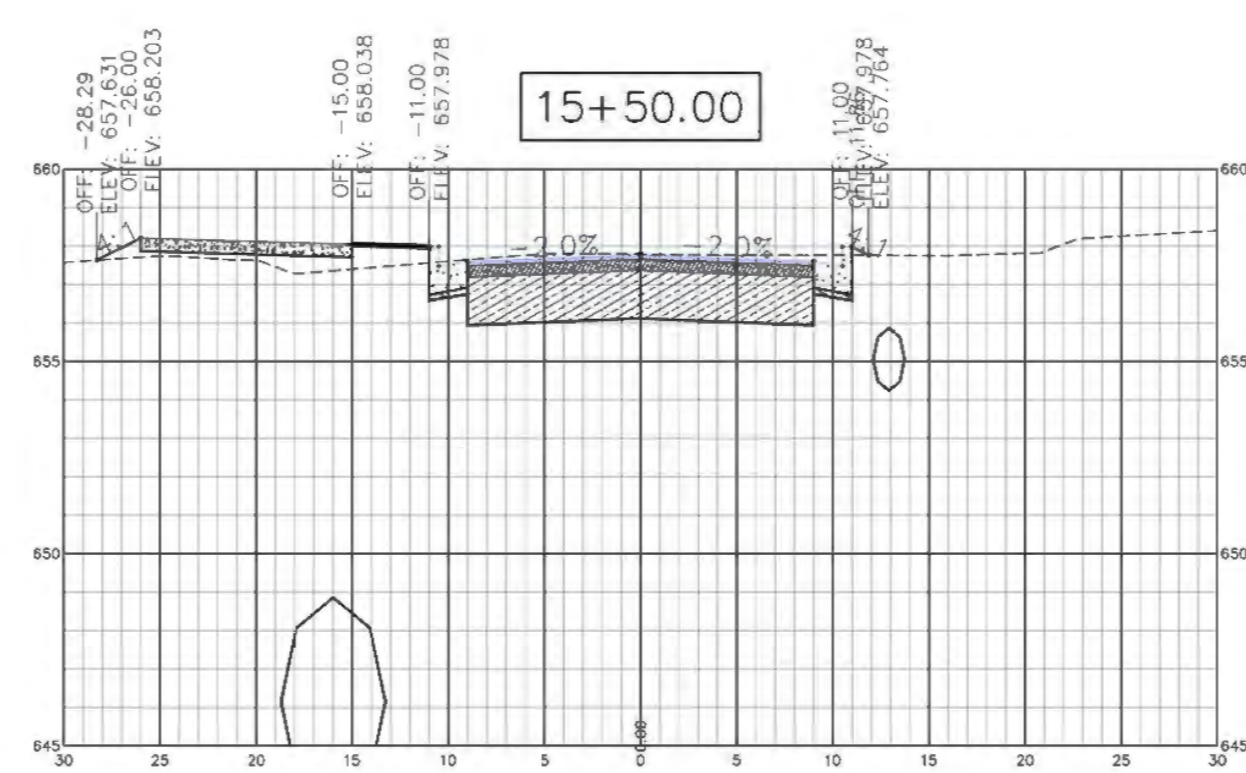
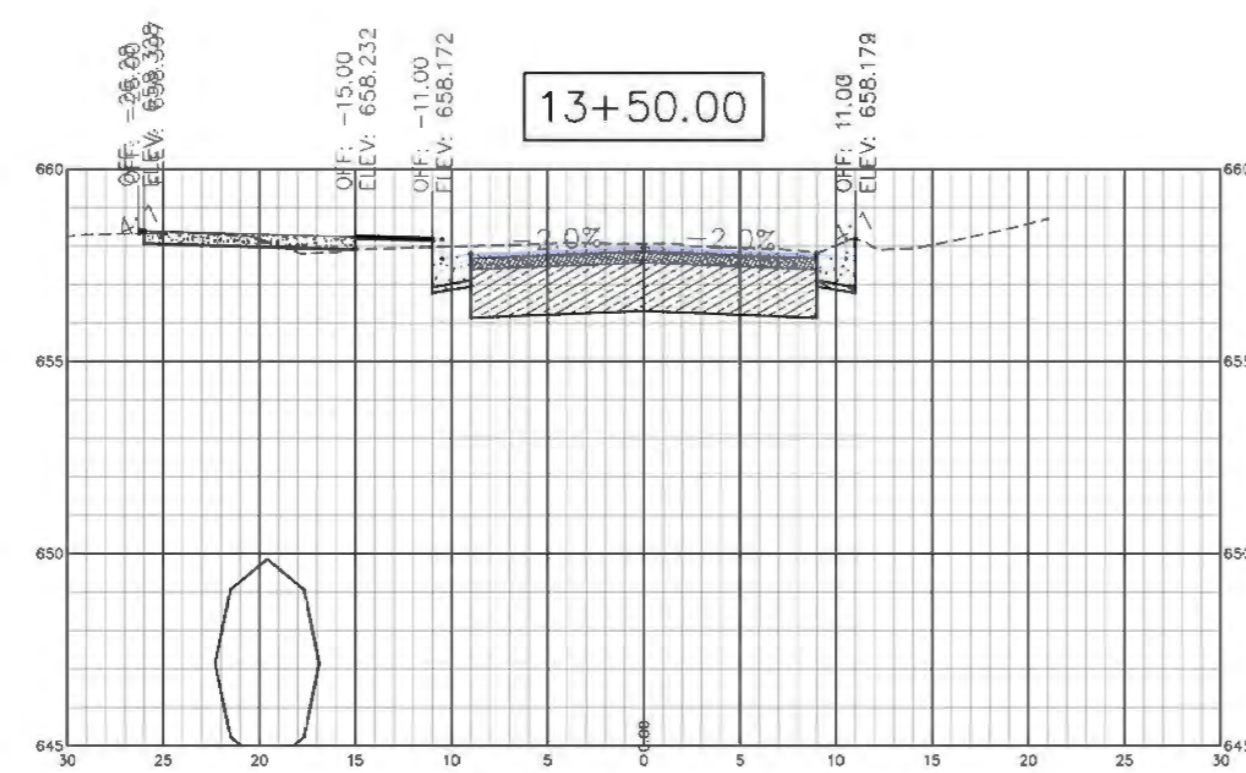
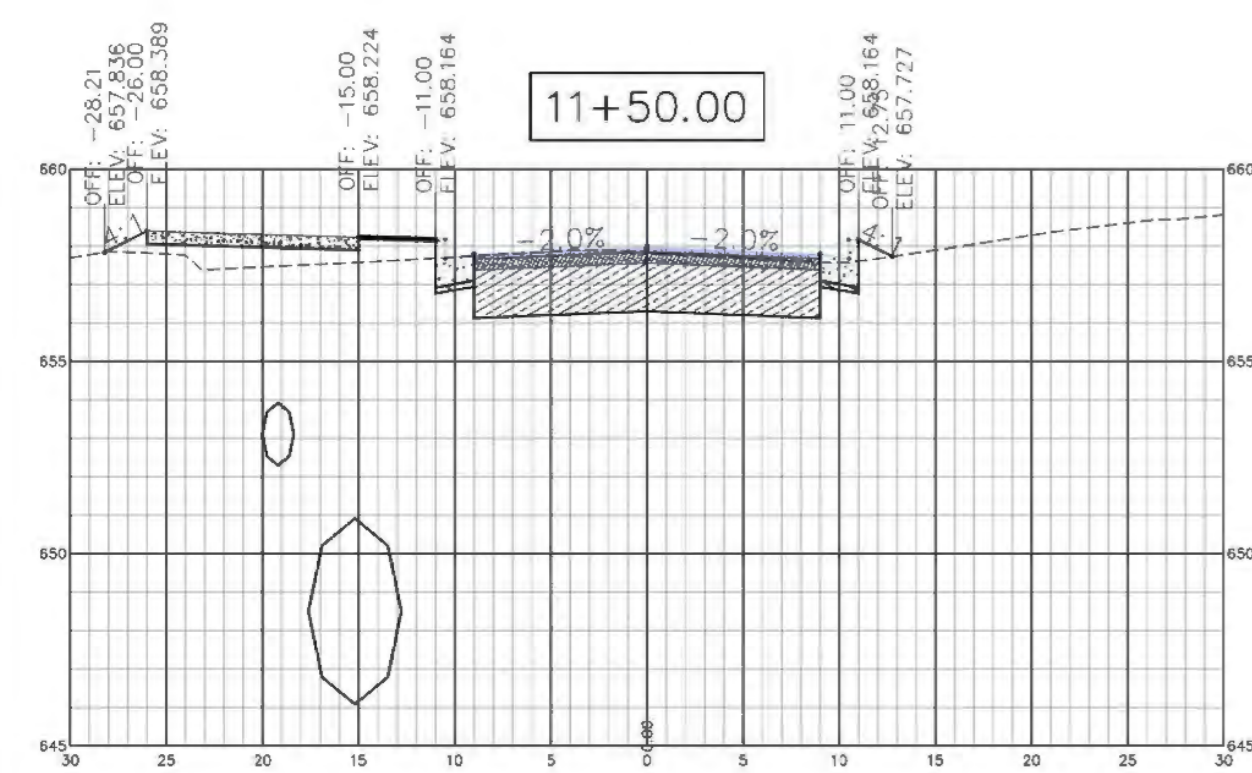
[illegible]

PRELIMINARY  
(SUBJECT TO  
CHANGE)

SHEET: 7 OF 12

T:\Projects\T-14-021 Riverwalk IV (Middle St. to Incline Railway)\Drawings\Base\DESIGN-3.dwg May 10, 2016 - 4:13pm, gherold





SCALE:  
1"=10' HORZ.  
1"=5' VERT.



**CITY OF  
CHATTANOOGA**  
DEPARTMENT  
OF  
TRANSPORTATION

BLYTHE BAILEY

BERTRAN KUYRKENDALL, P.E.

CONTRACT #T-14-021  
RIVERWALK EXTENSION  
ALONG ST. ELMO AVENUE  
(FROM W. 32TH ST. TO TENNESSEE AVE.)

NO.	DATE	REVISION	SIG.
-----	------	----------	------

[illegible]

CONTRACT#	T-14-021
-----------	----------

SCALE:	1" = 20'
--------	----------

DRAWN:	GEH
--------	-----

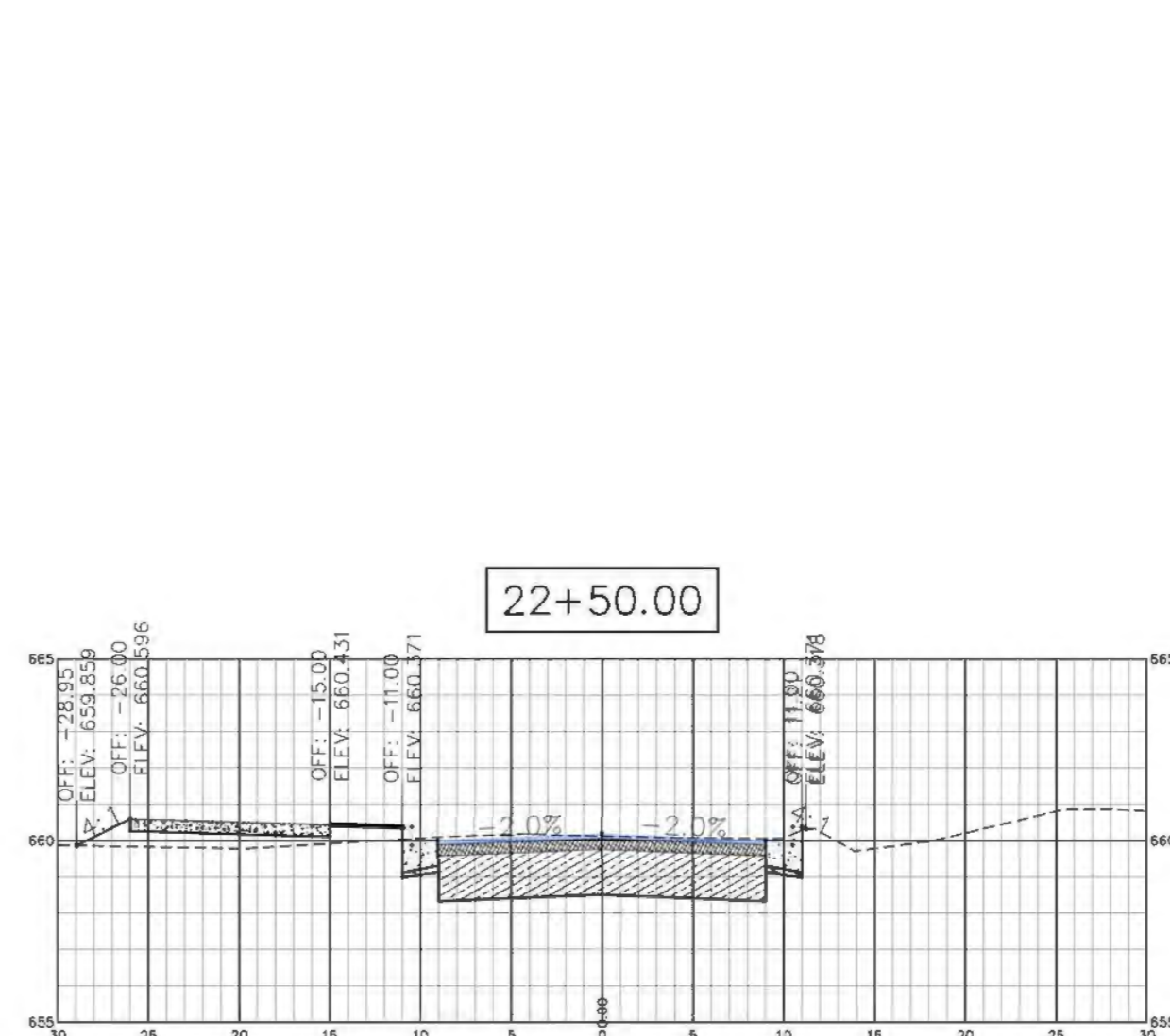
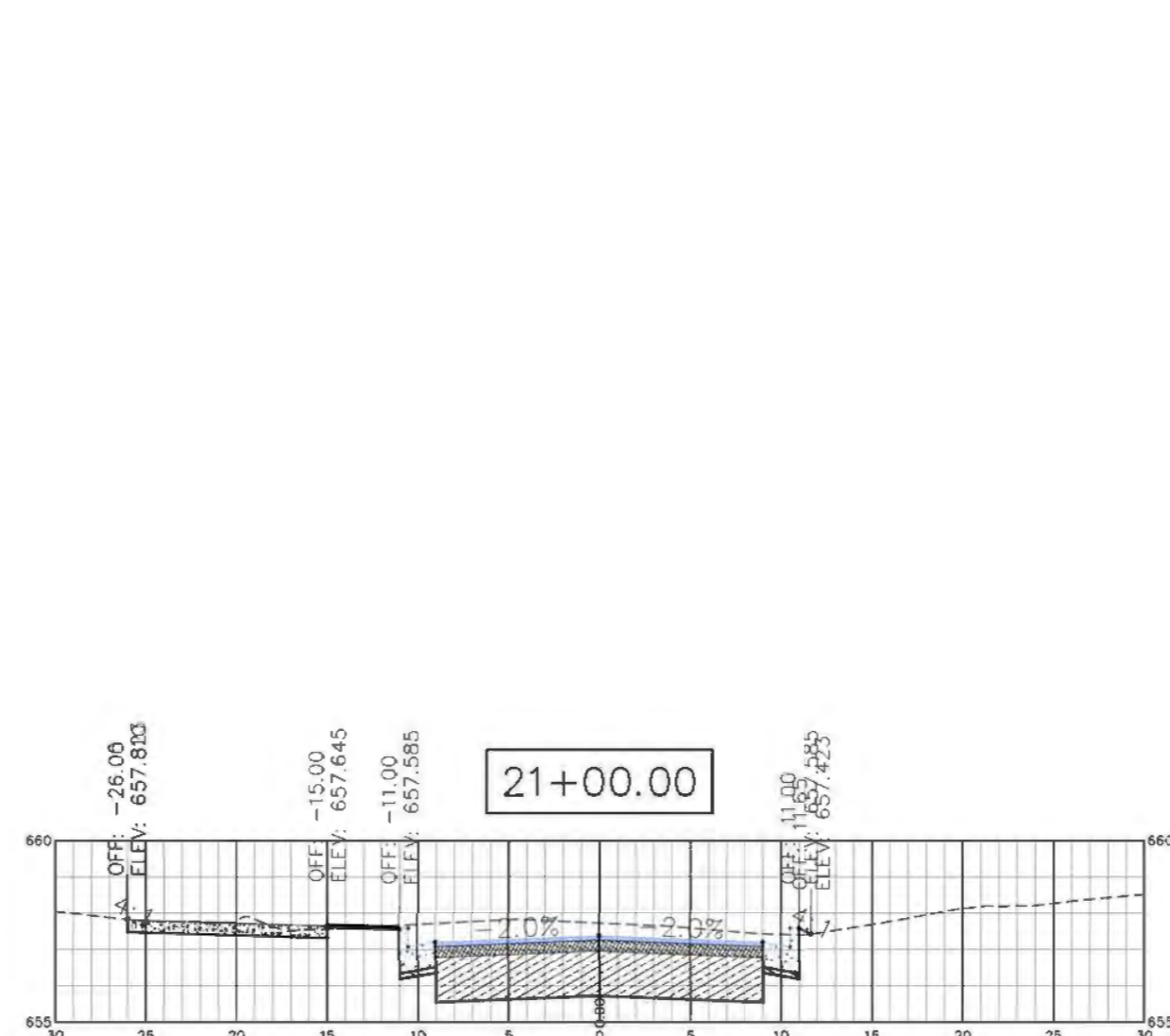
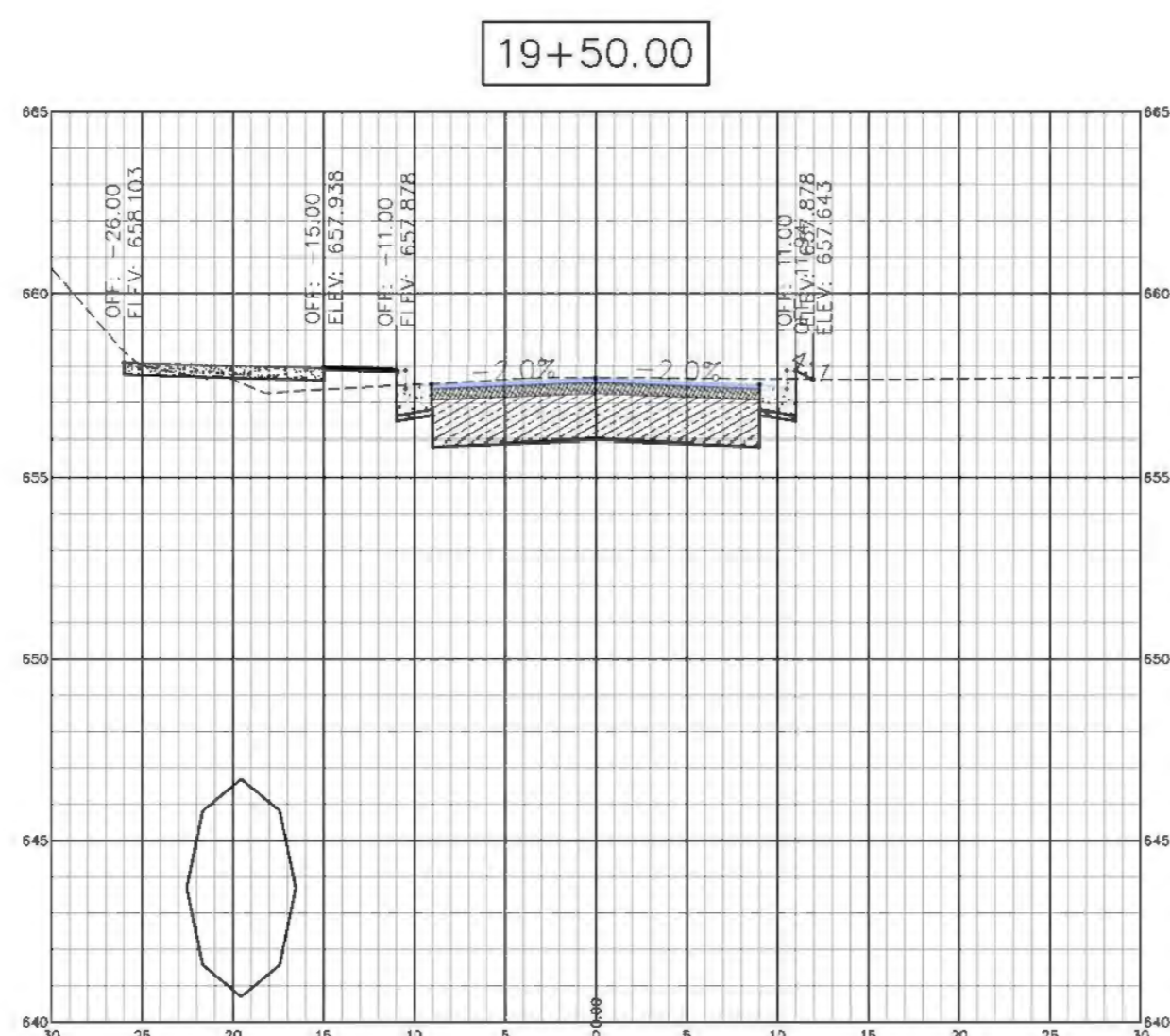
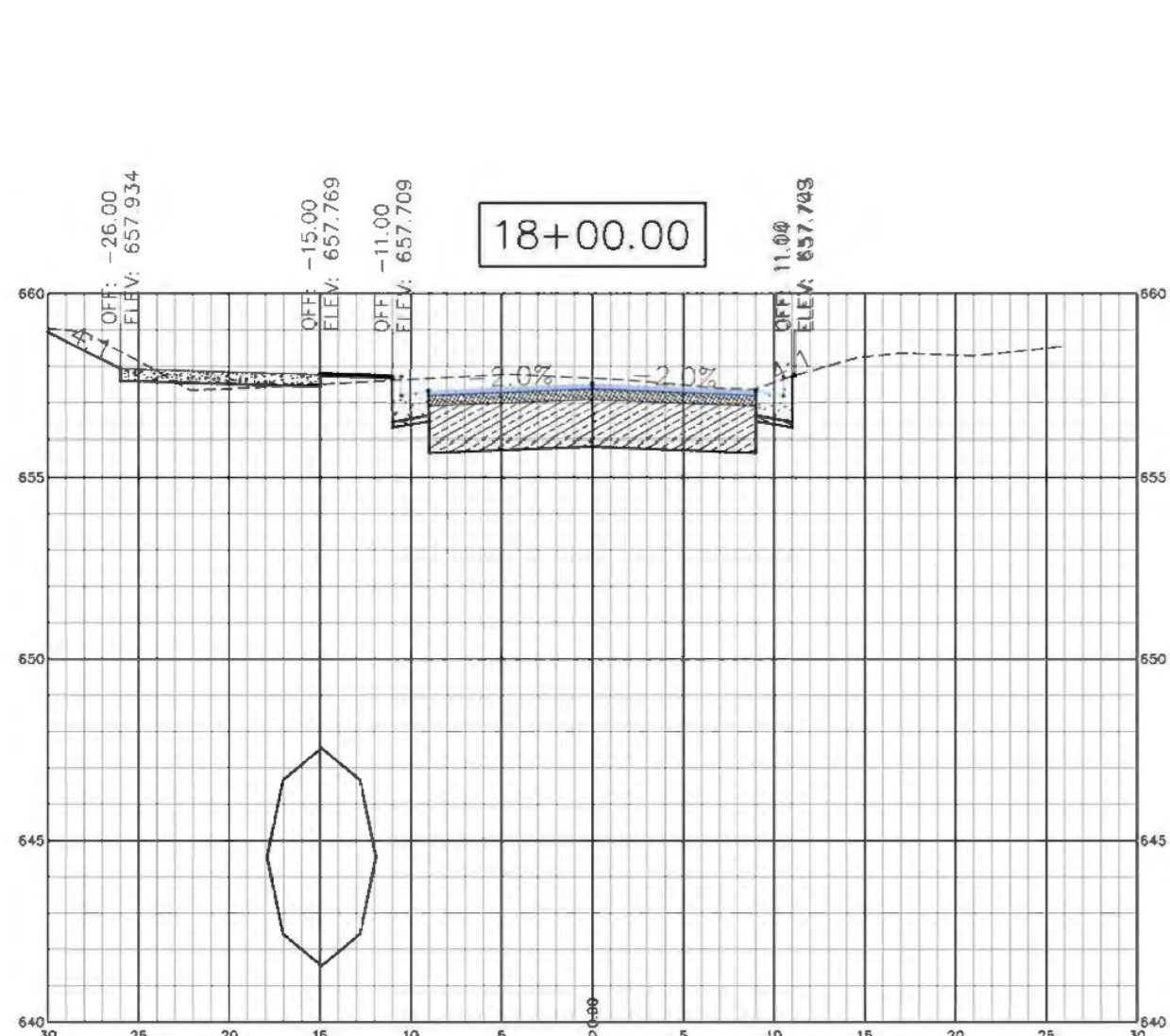
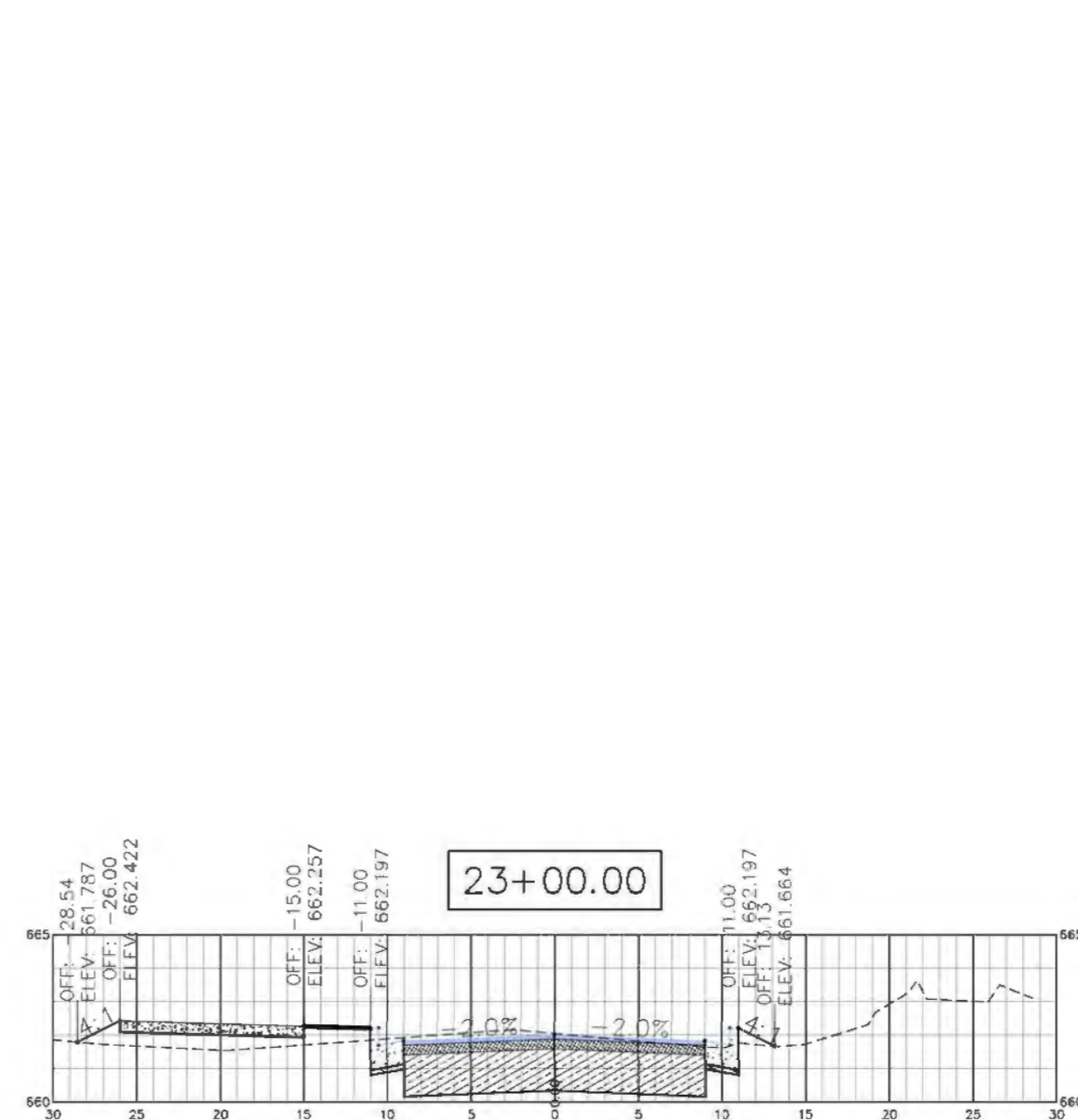
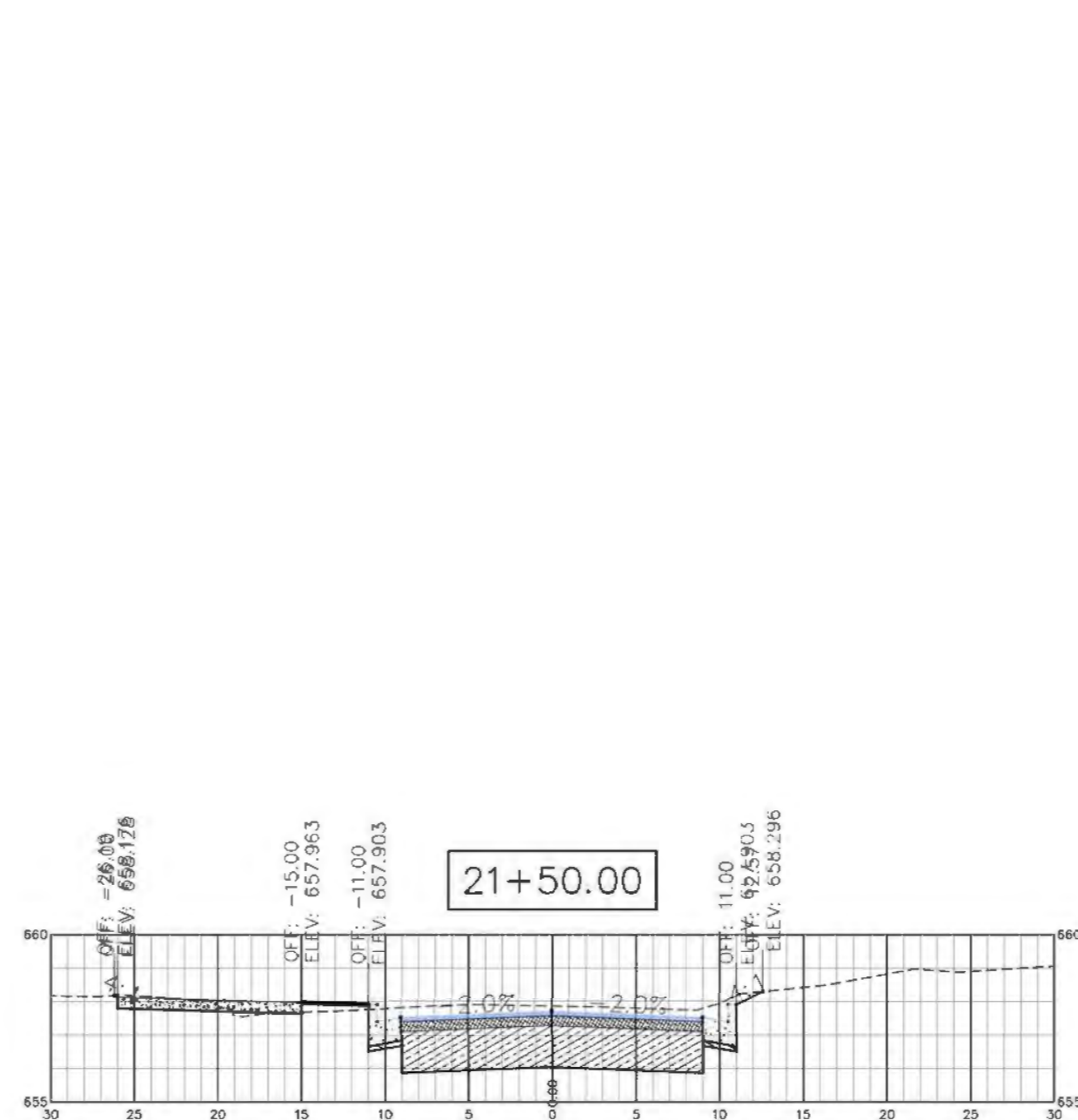
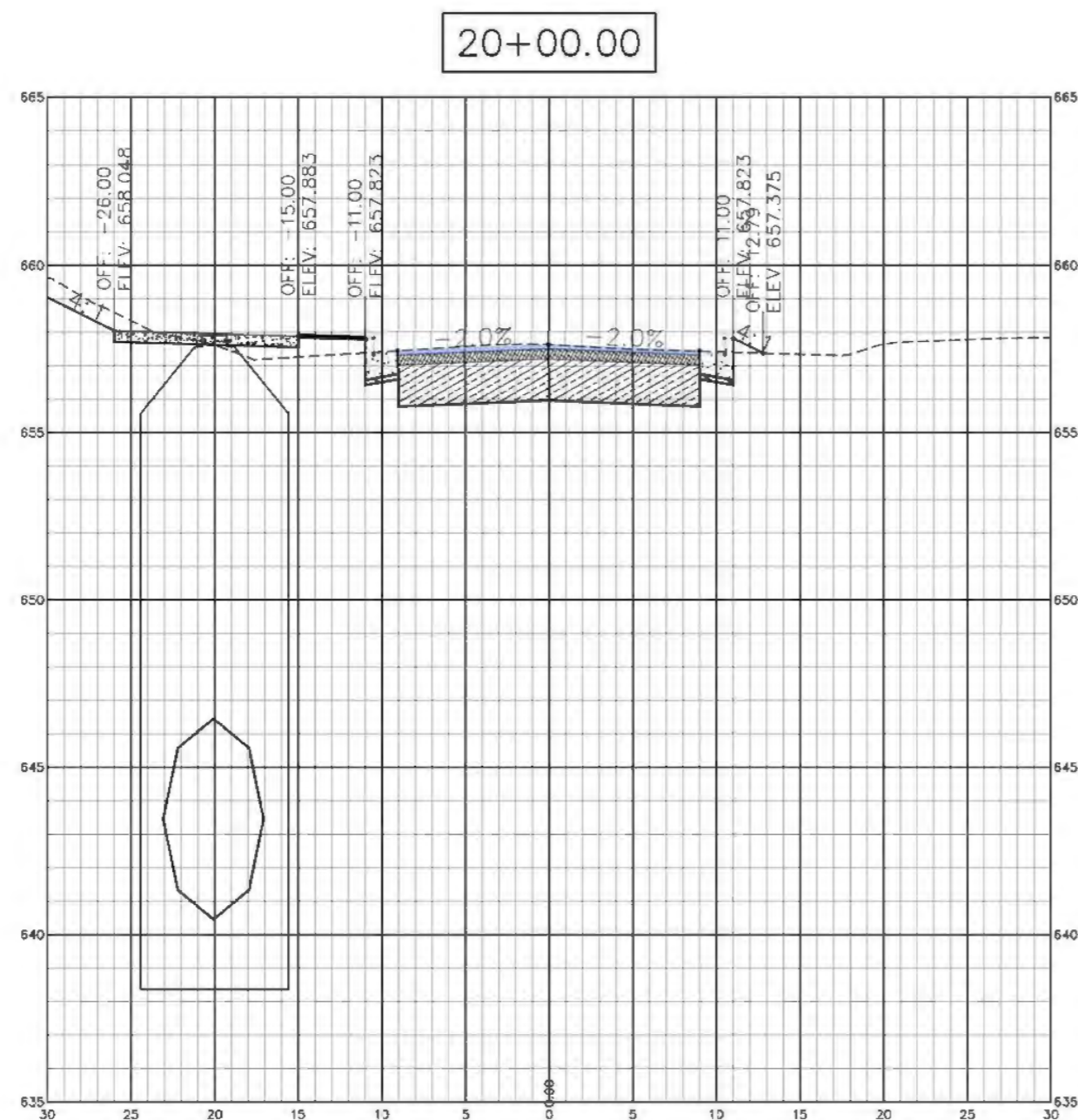
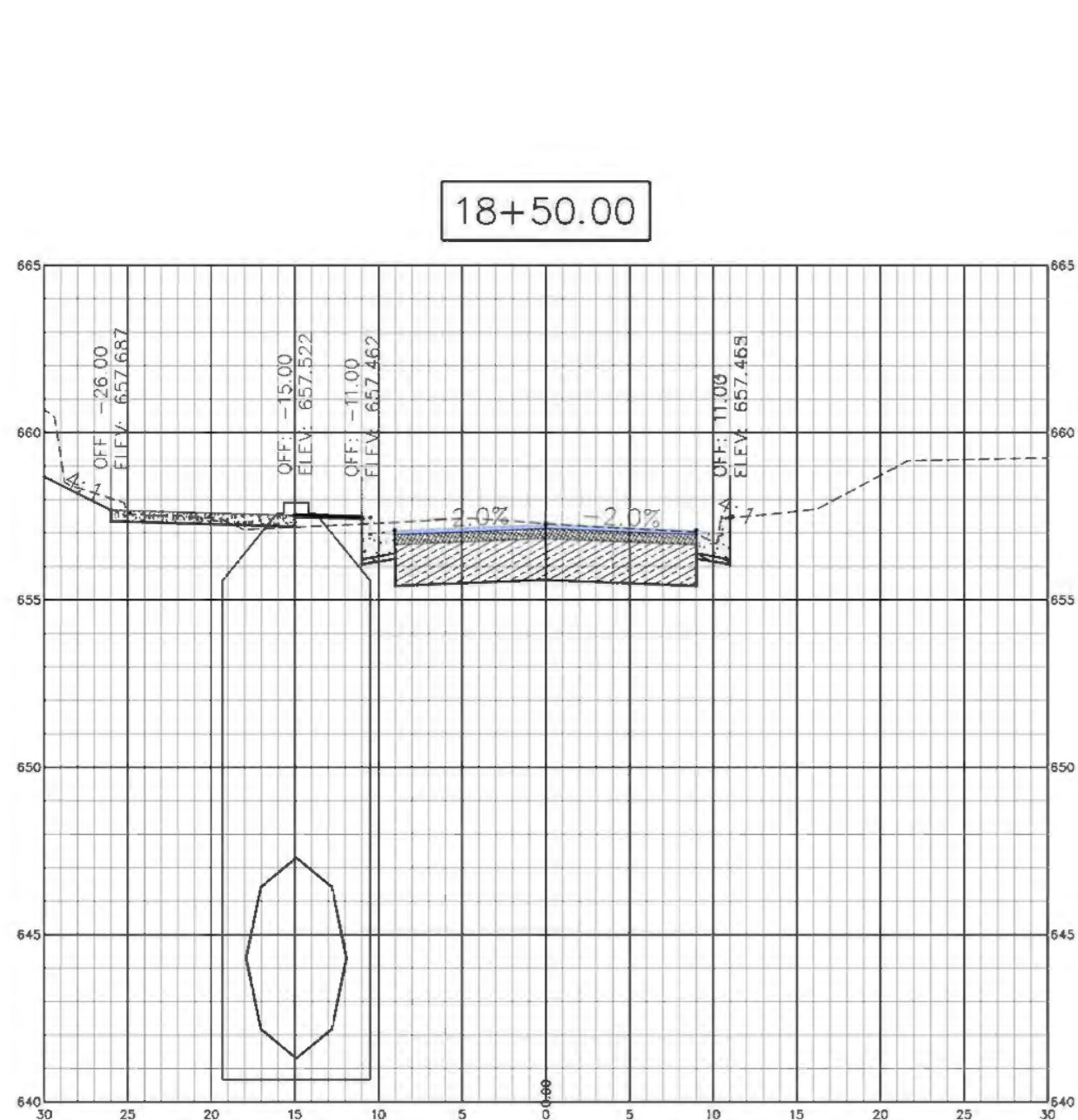
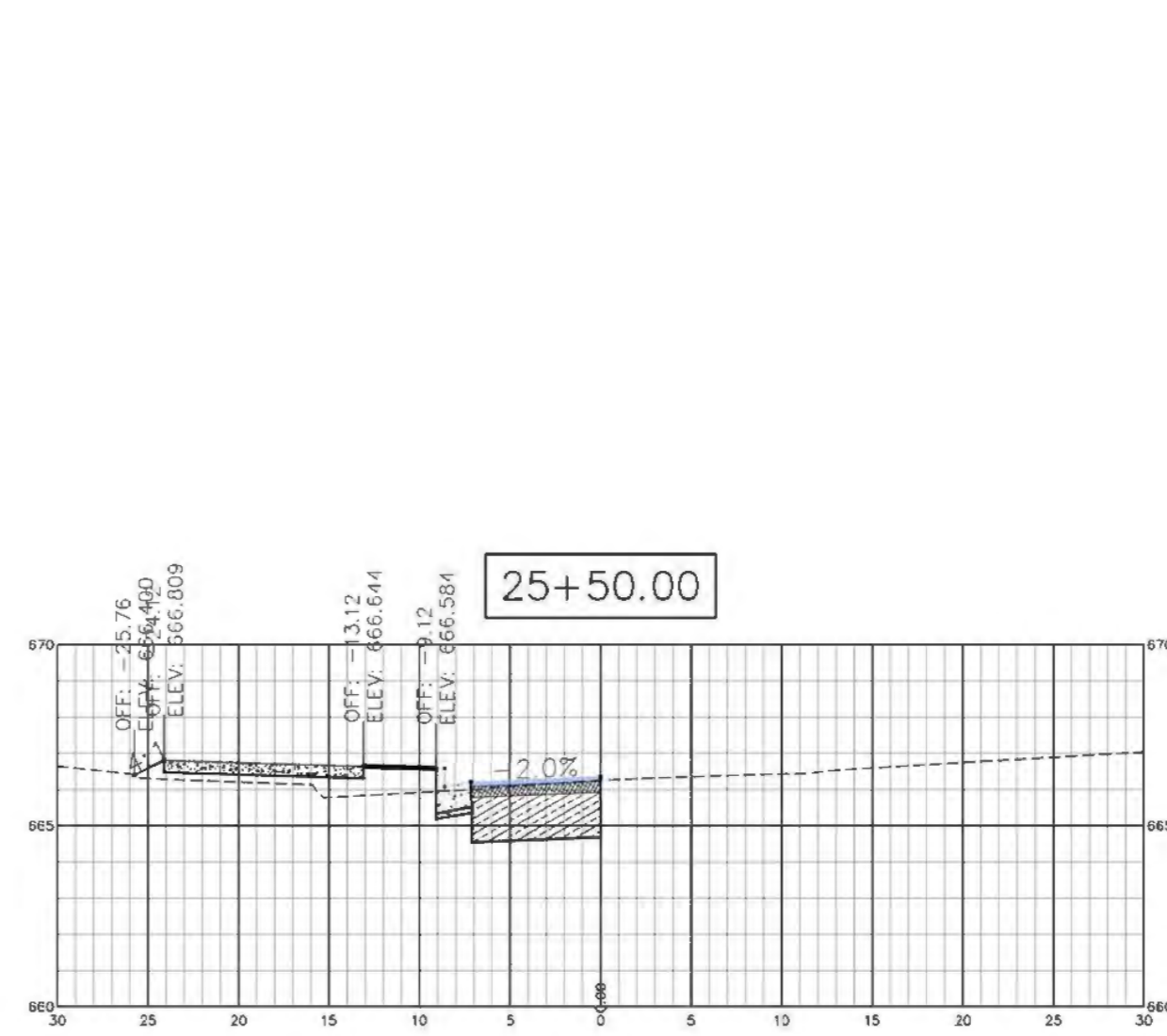
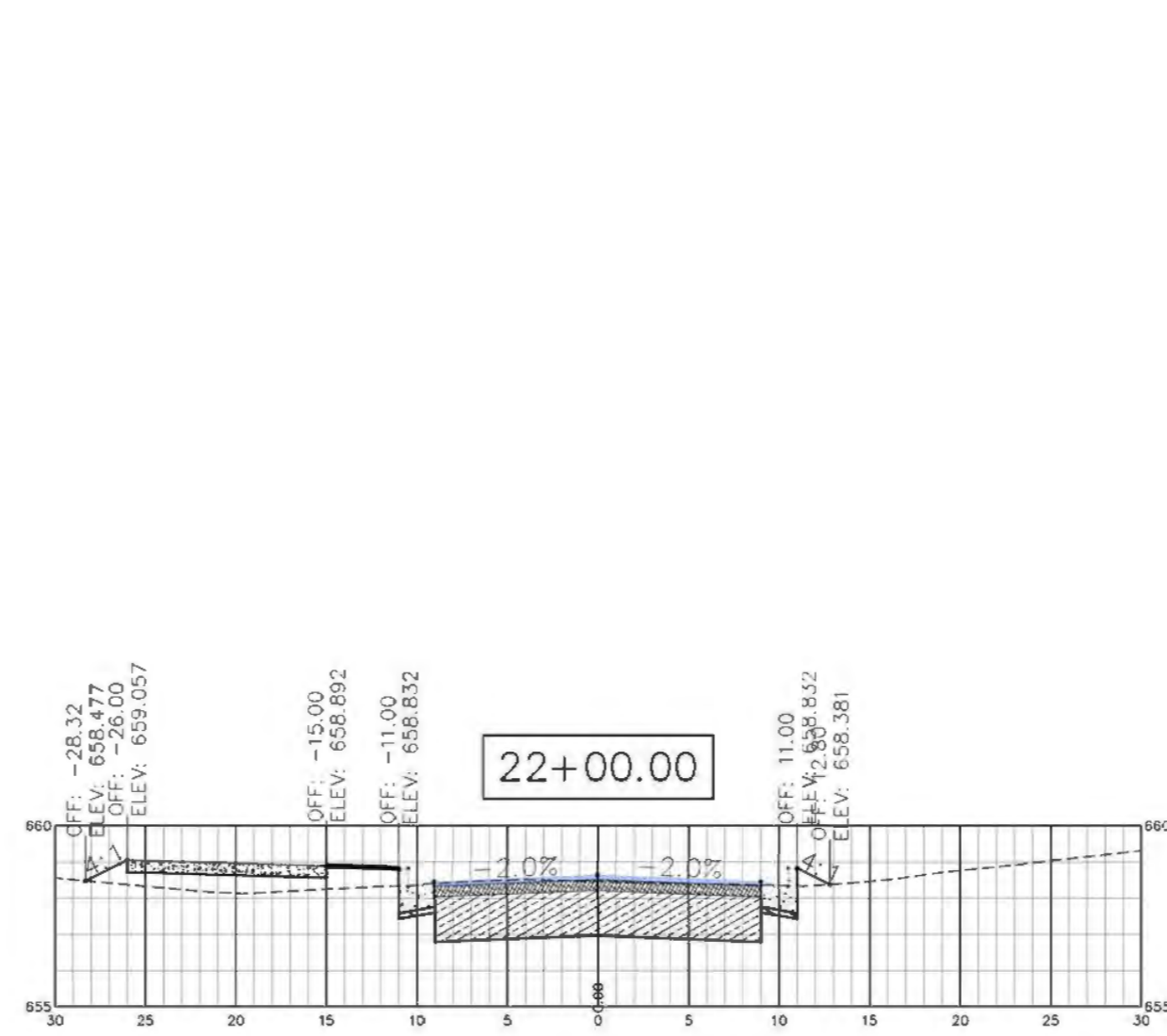
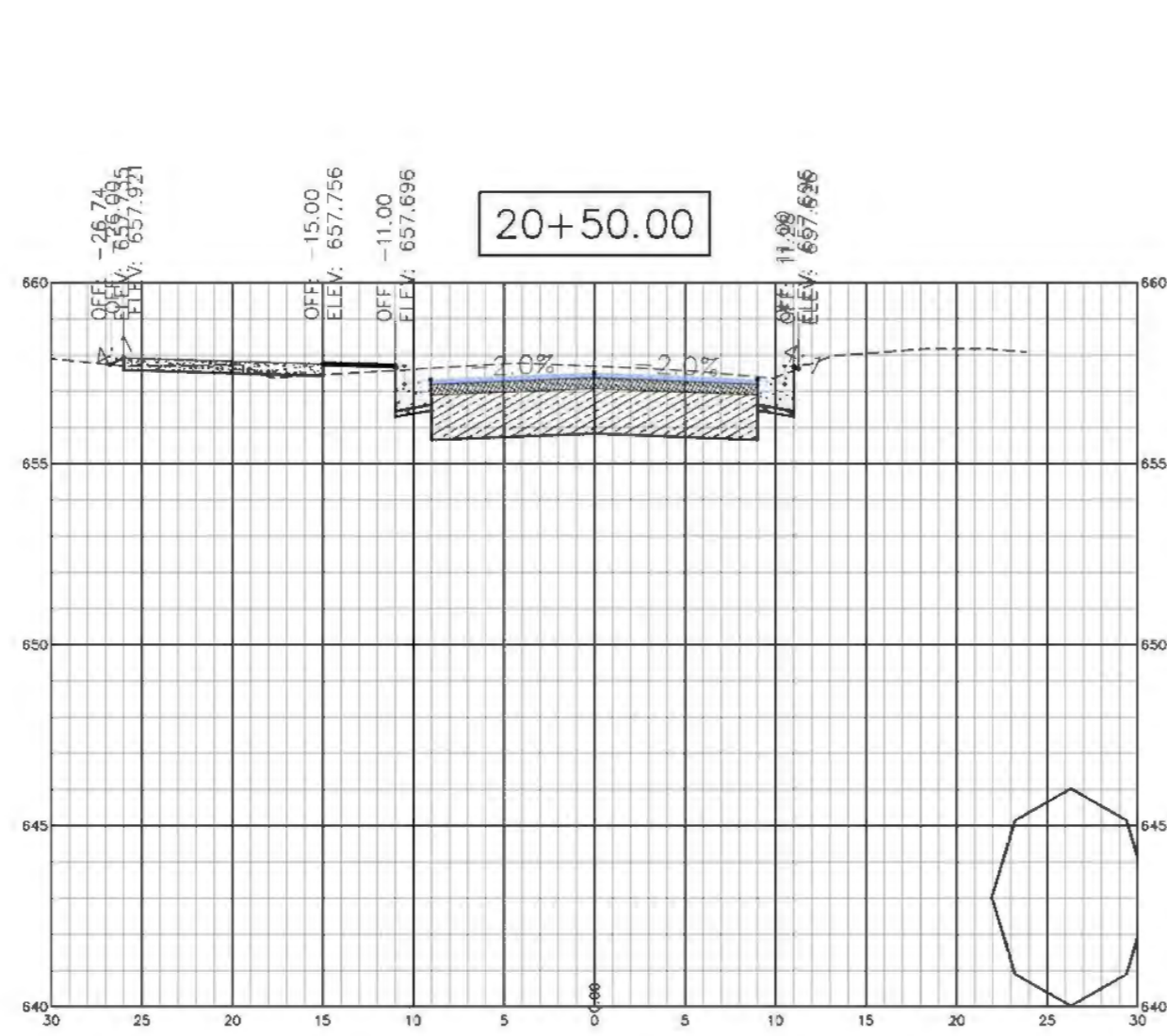
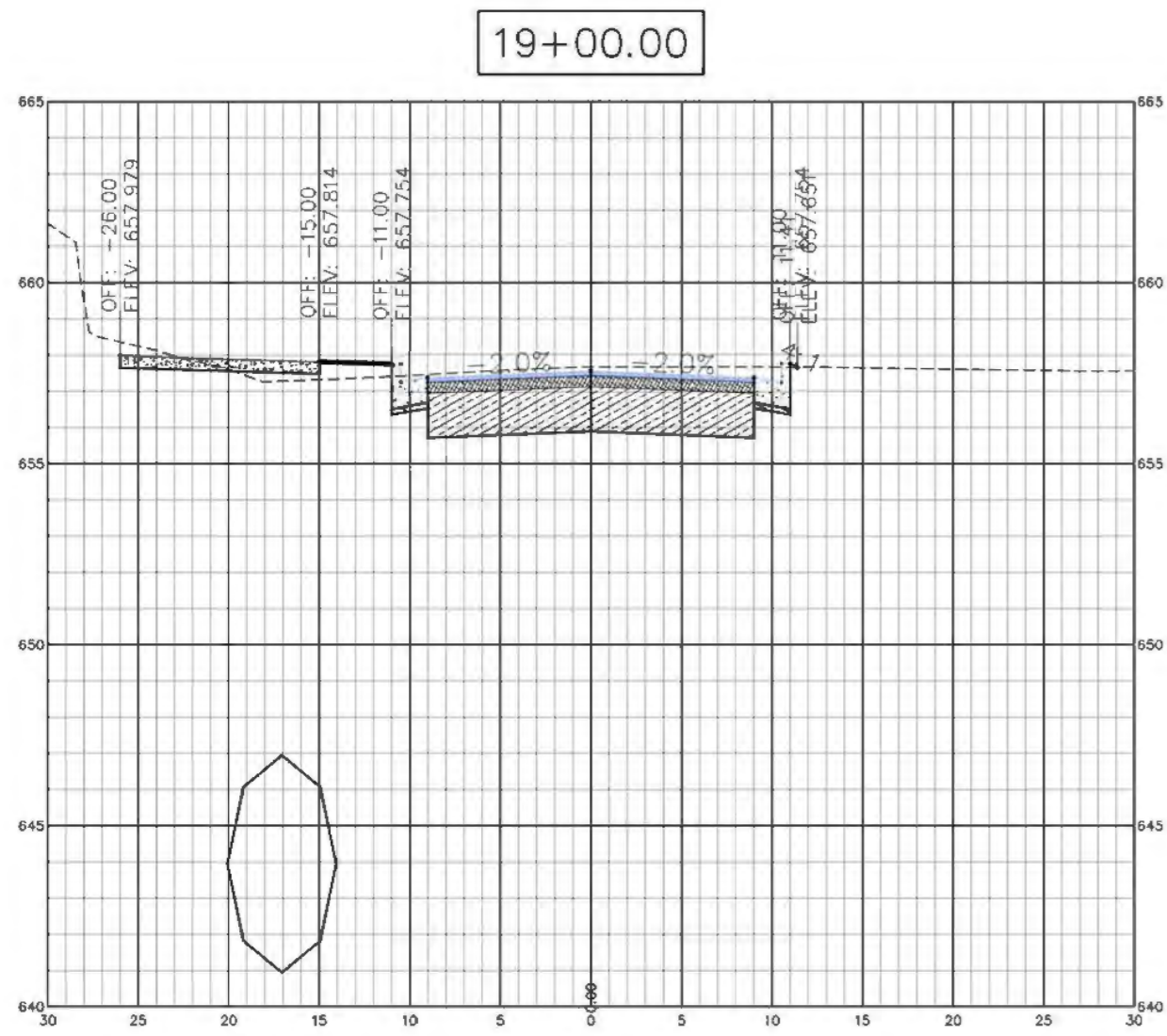
DESIGN:	GEH
---------	-----

CHECKED:	BCS
----------	-----

PRELIMINARY  
(SUBJECT TO  
CHANGE)

SHEET:	9 OF 12
--------	---------

T:\Projects\T-14-021 Riverwalk IV (Middle St. to Incline Railway)\Drawings\Basic\DESIGN-3.dwg    May 10, 2016    - 4:23pm, ghruld



SCALE:  
1"=10' HORZ.  
1"=5' VERT.



CITY OF  
CHATTANOOGA  
DEPARTMENT  
OF  
TRANSPORTATION

BLYTHER BAILEY

BERTRAN KUYRKENDALL, P.E.

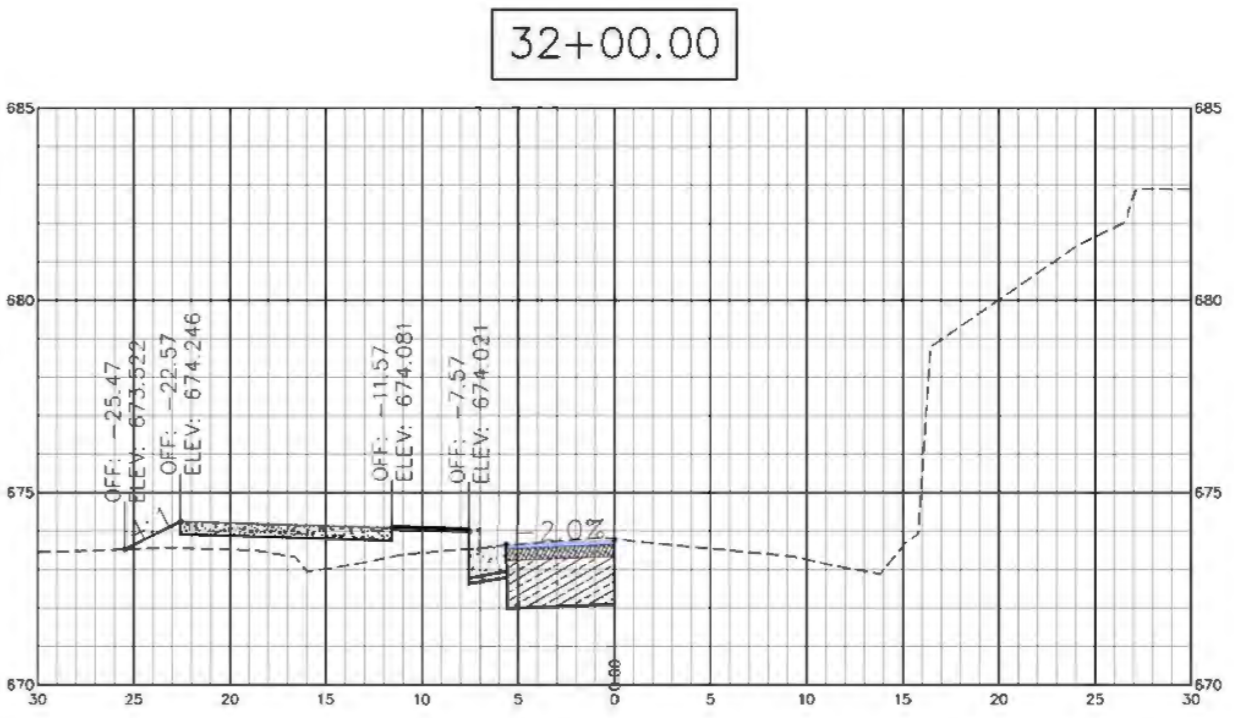
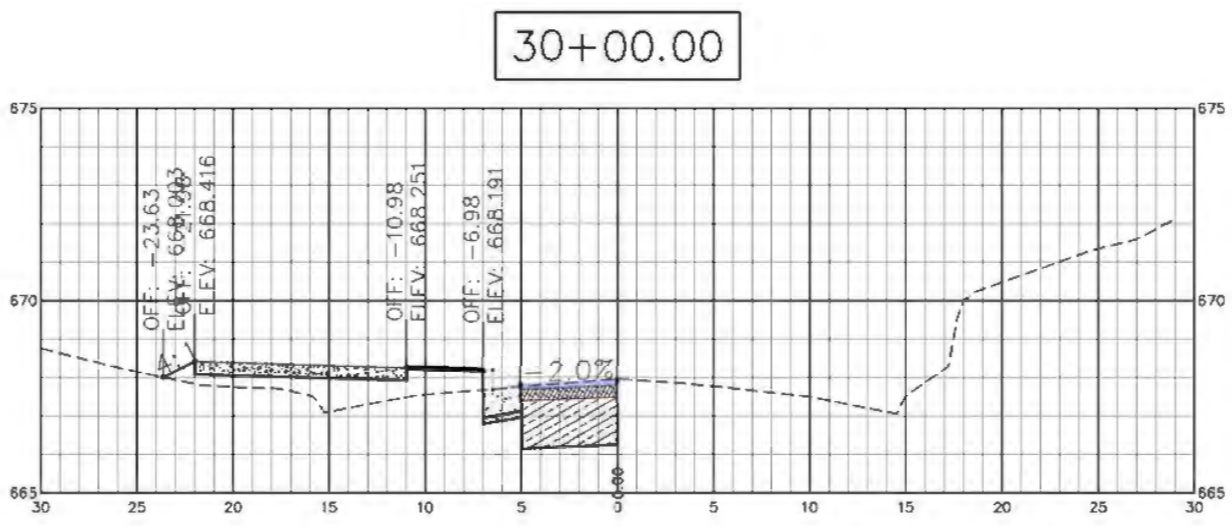
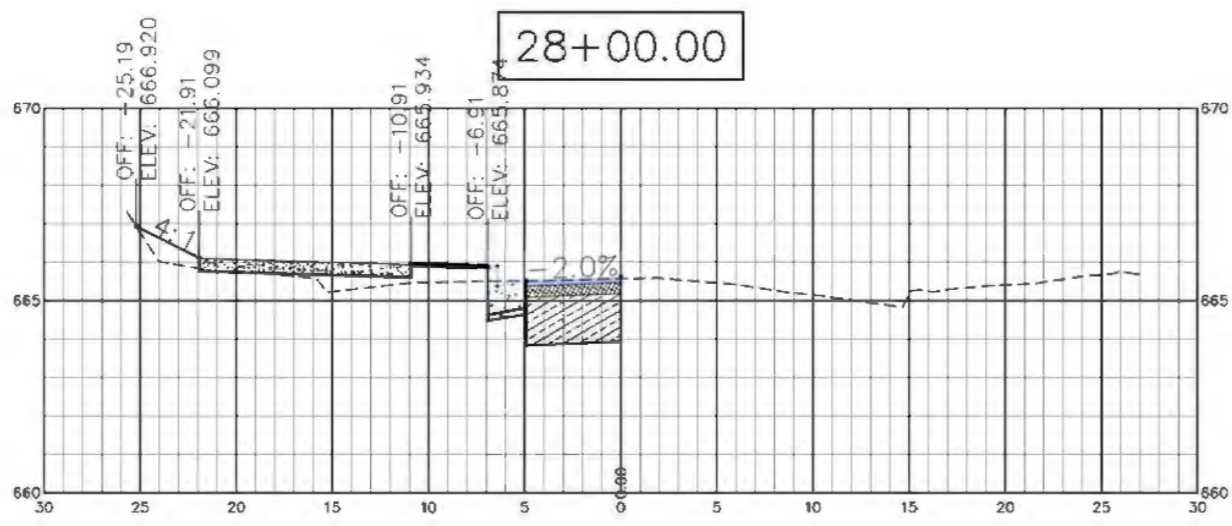
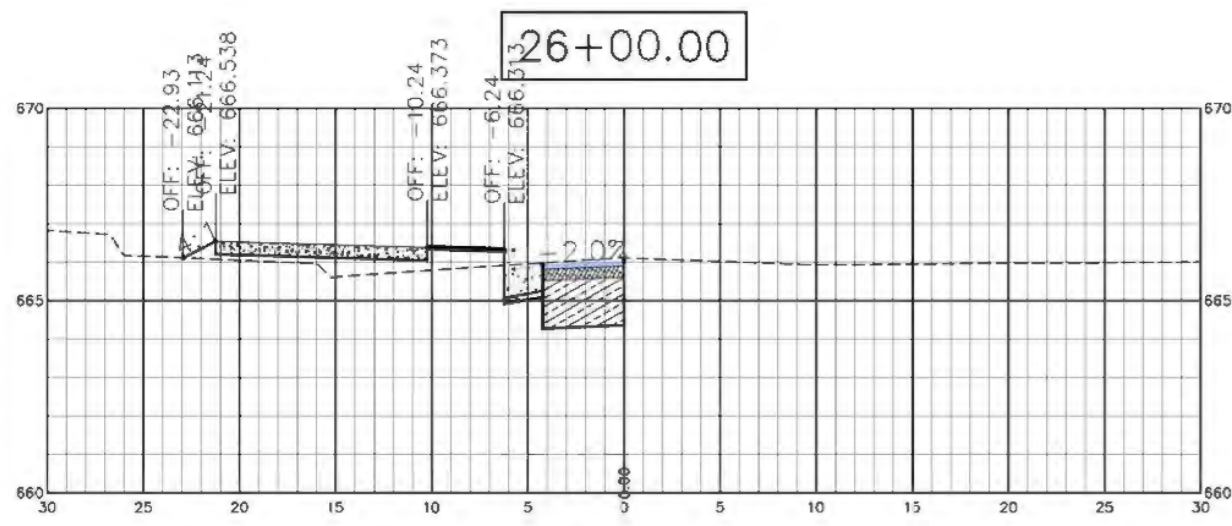
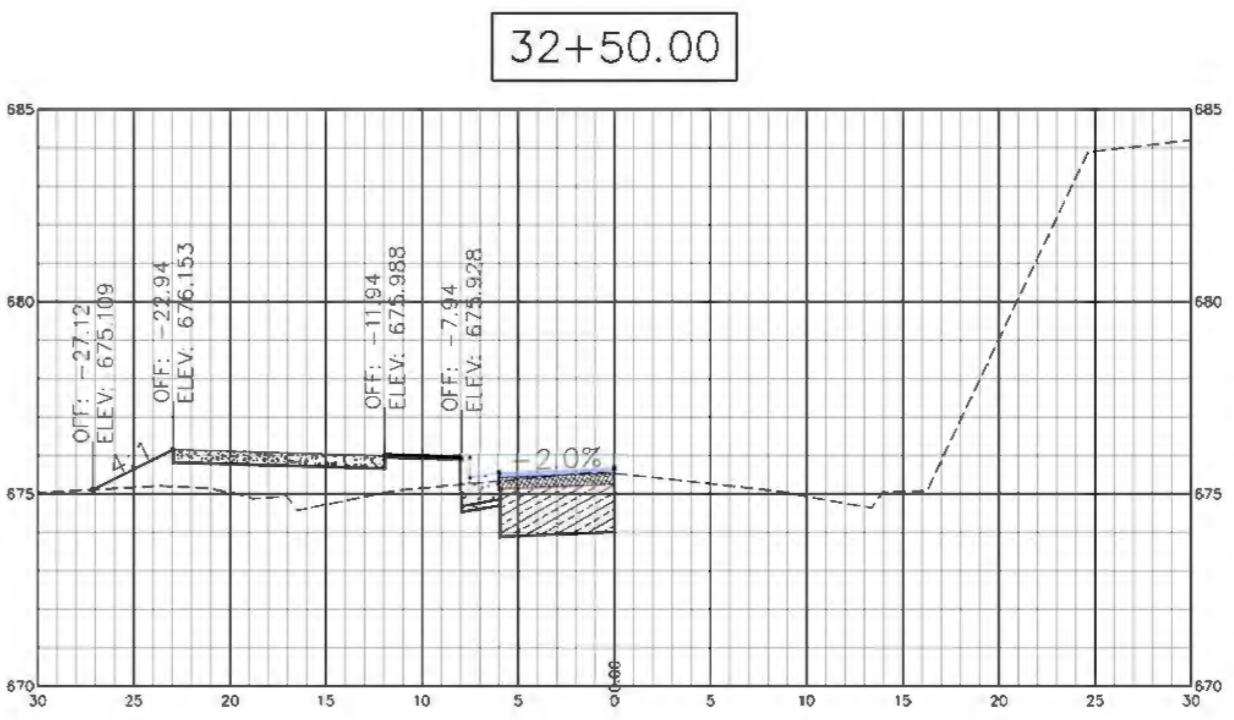
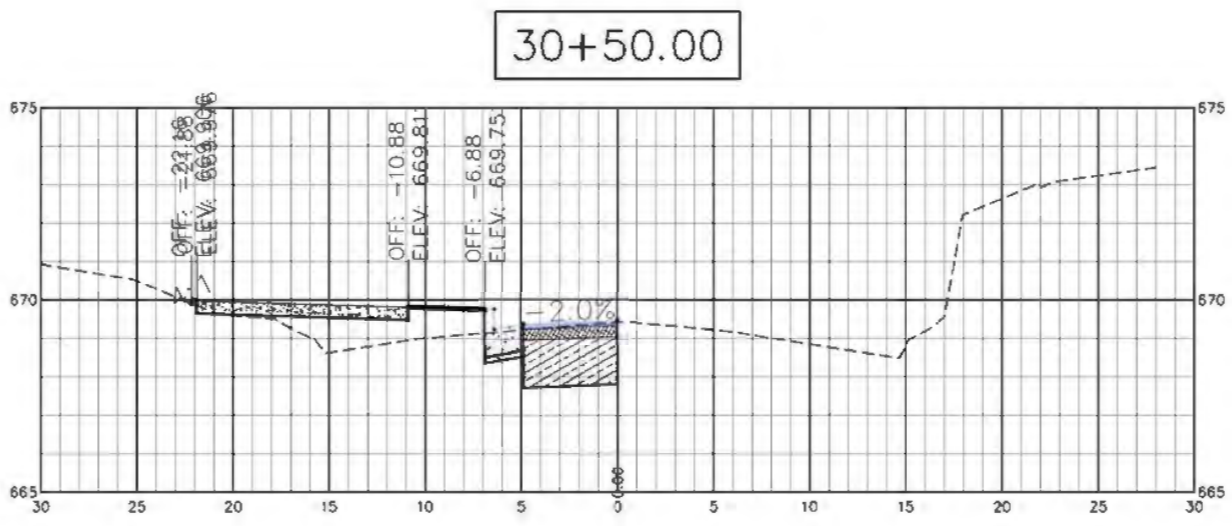
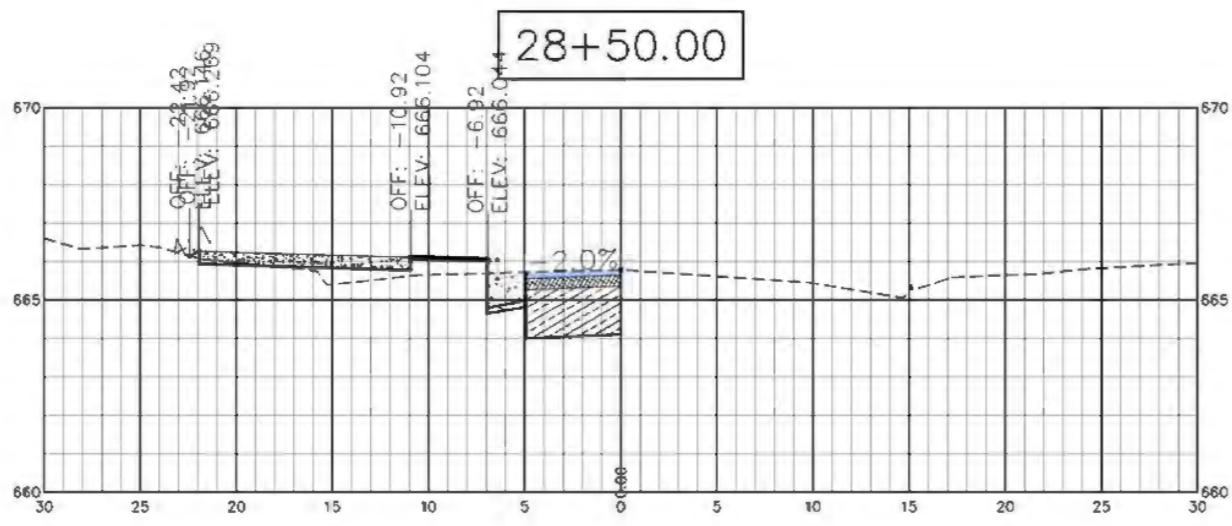
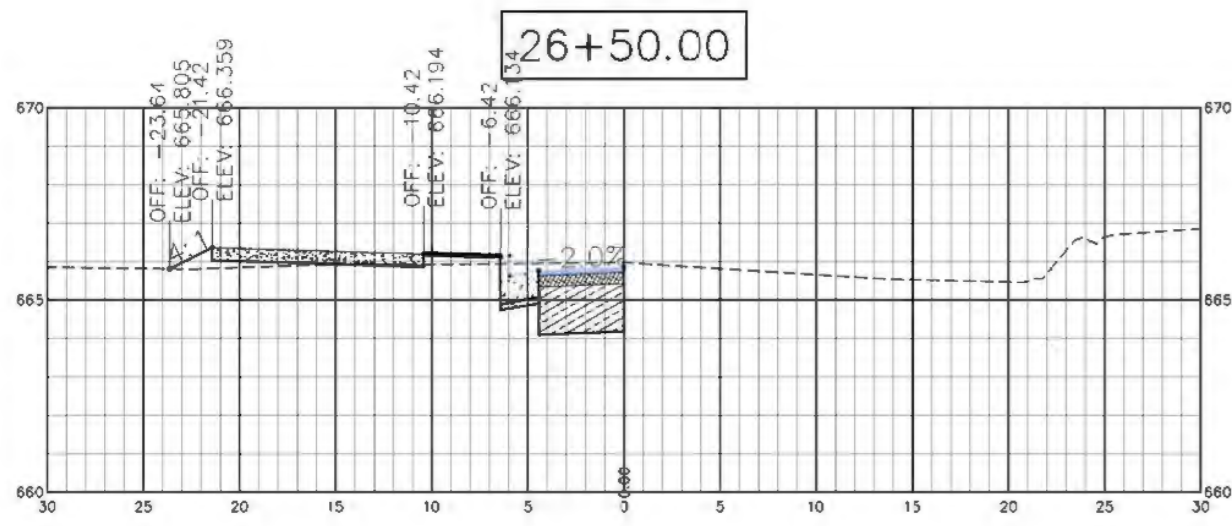
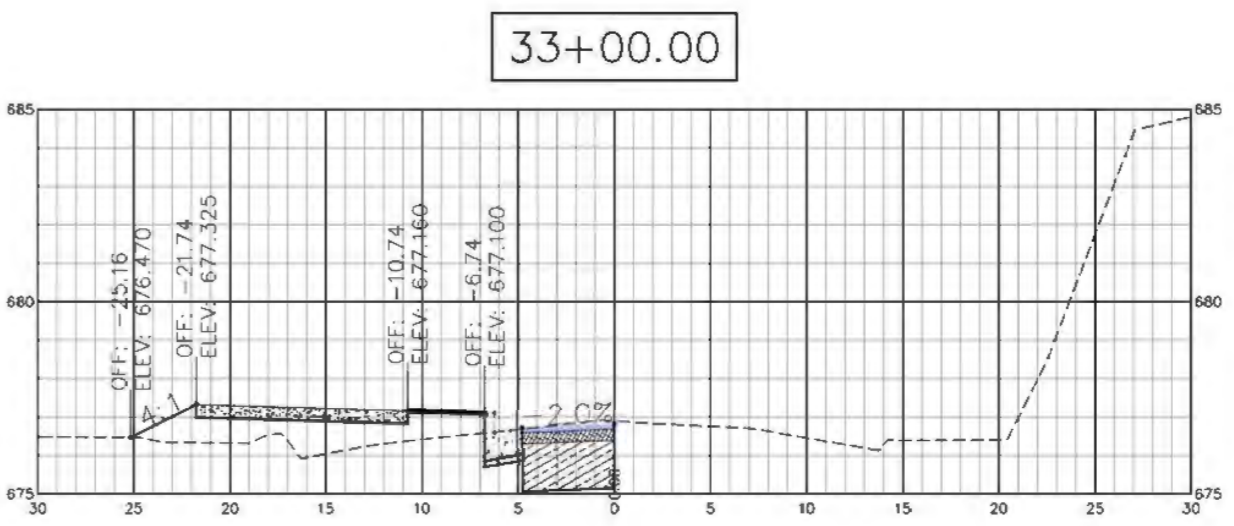
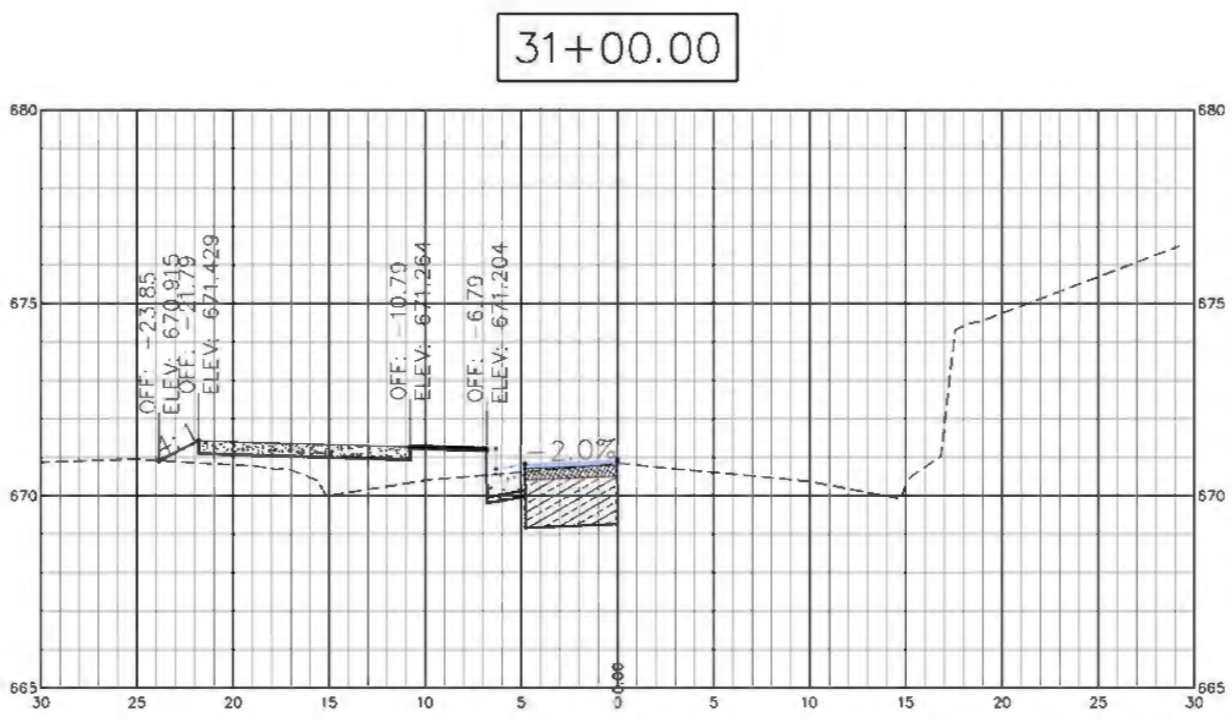
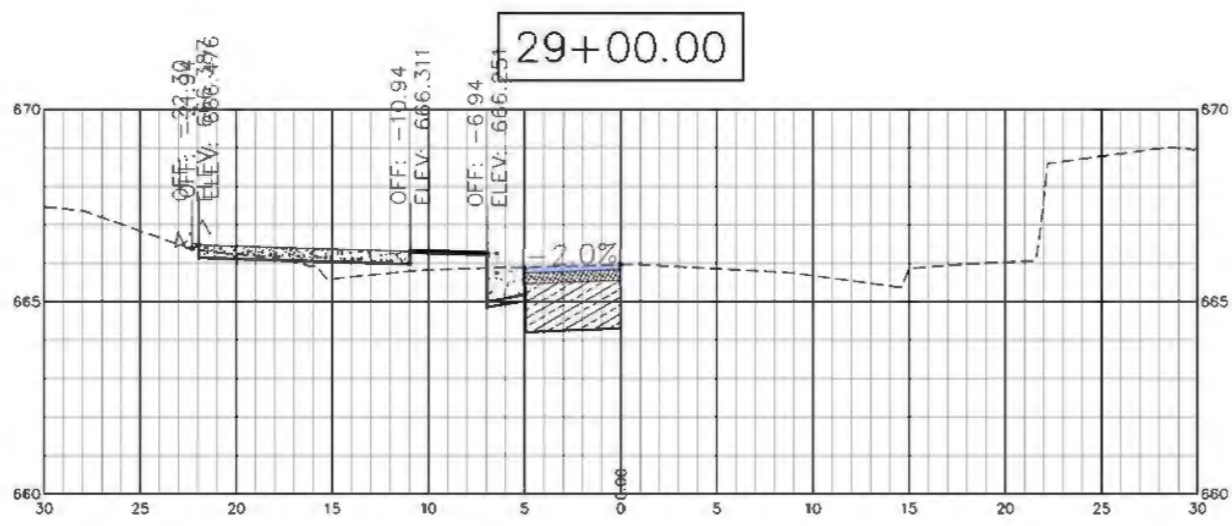
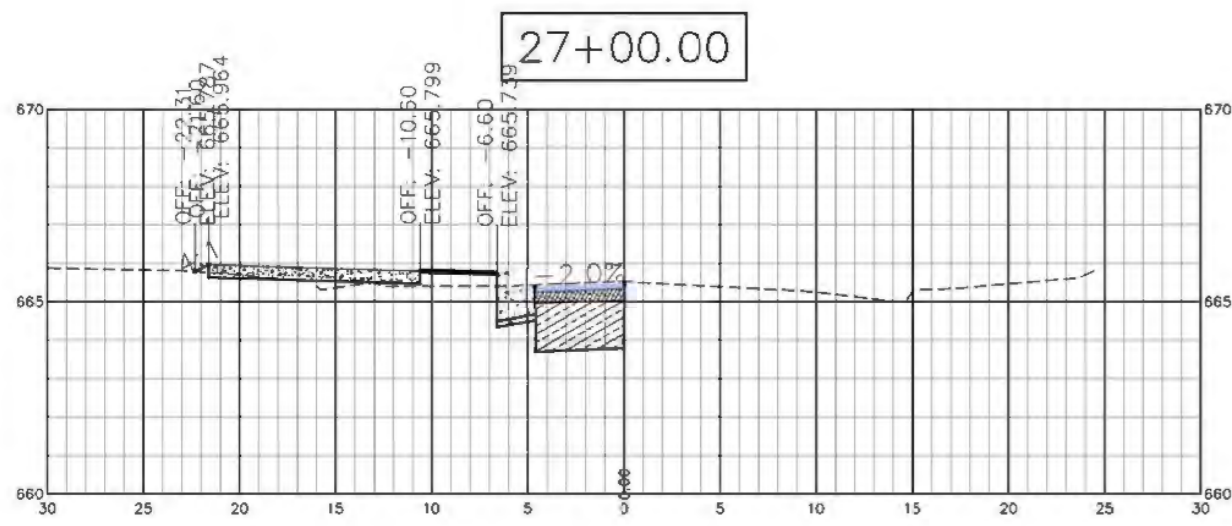
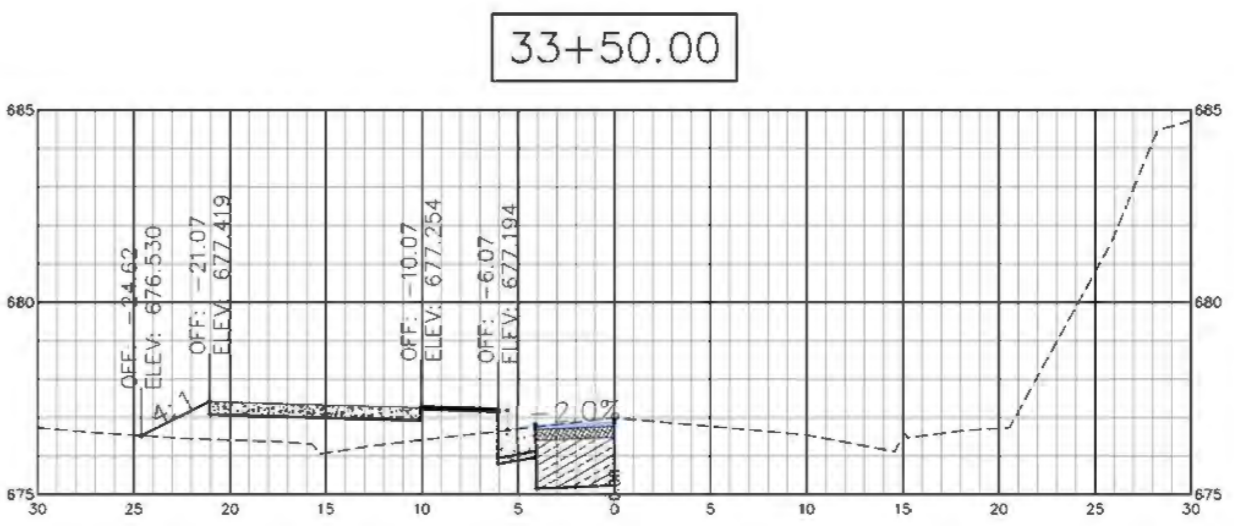
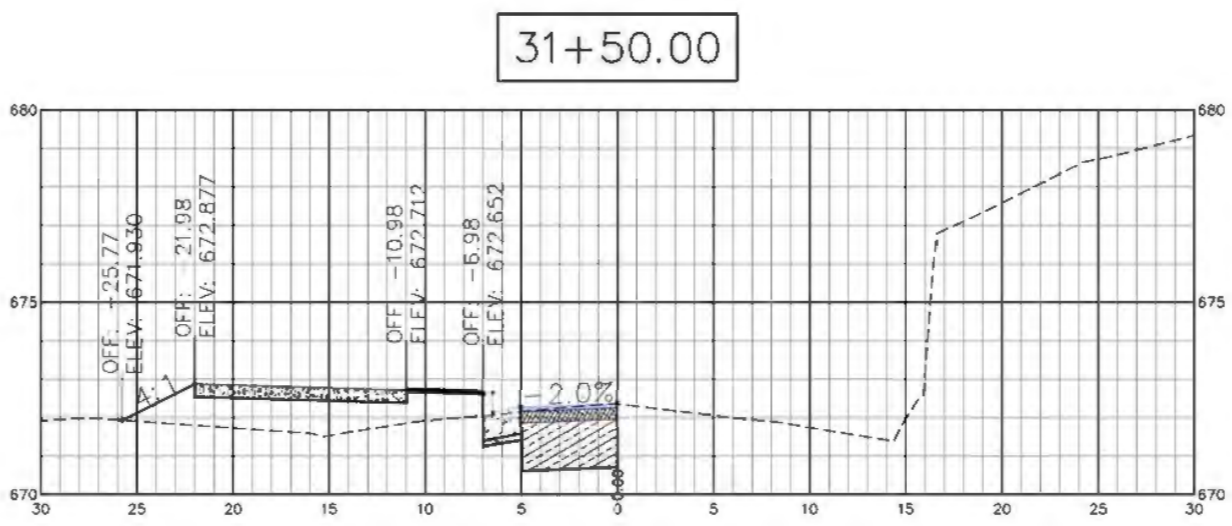
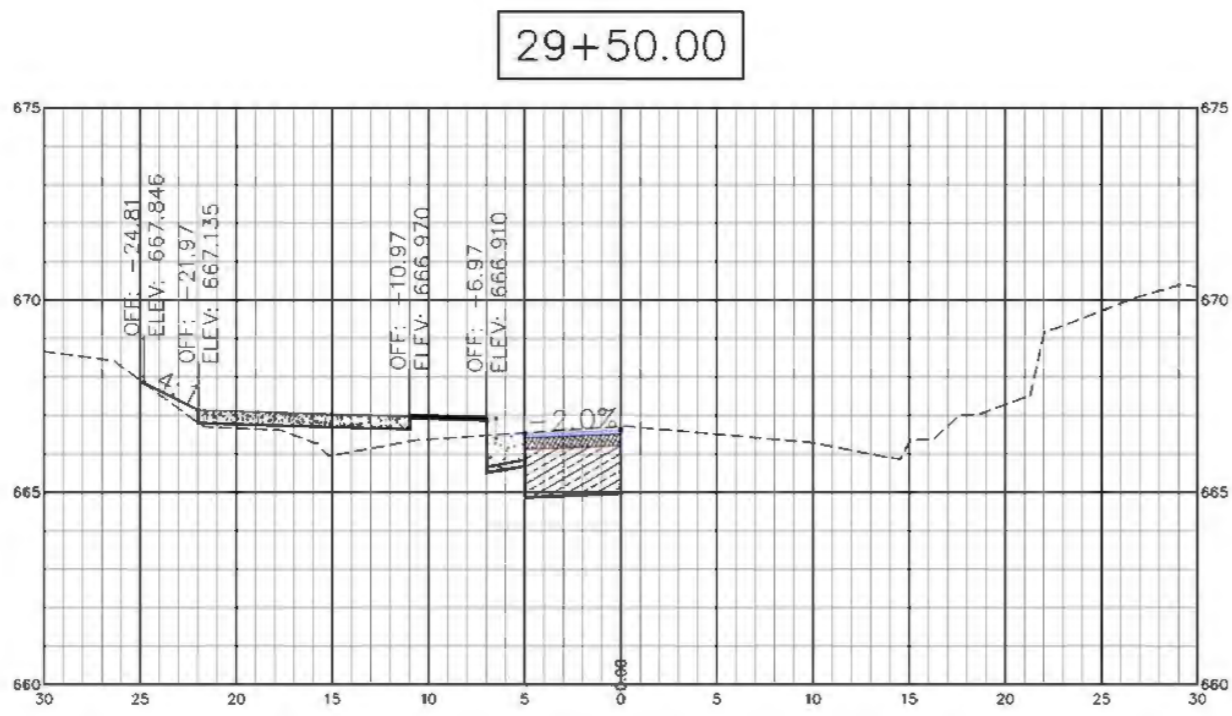
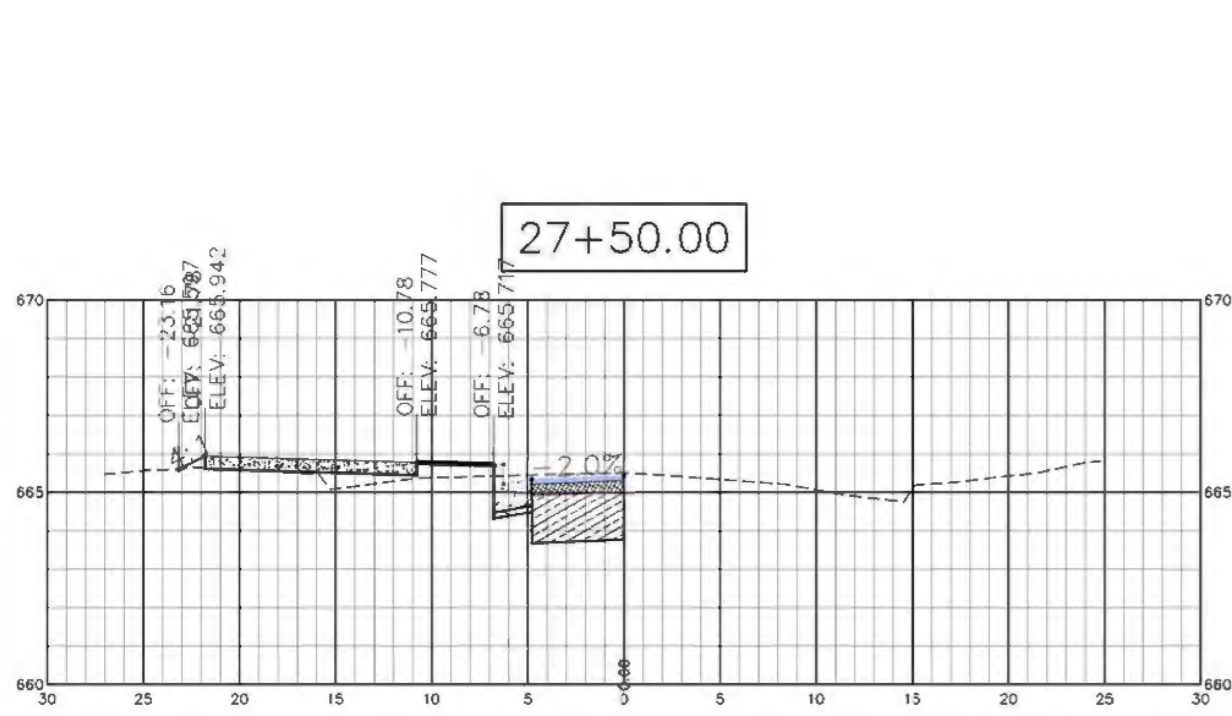
CONTRACT #T-14-021  
RIVERWALK EXTENSION  
ALONG ST. ELMO AVENUE  
(FROM W. 32TH ST. TO TENNESSEE AVE.)

NO.	DATE	REVISION	SIG.
0			

CONTRACT# T-14-021  
SCALE: 1" = 20'  
DRAWN: GEH  
DESIGN: GEH  
CHECKED: BCS

PRELIMINARY  
(SUBJECT TO  
CHANGE)

T:\Projects\T-14-021 Riverwalk IV (Middle St. to Incline Railway)\Drawings\Bent\DESIGN-3.dwg    May 10, 2016    - 4:27pm, ghrld



SCALE:  
1"=10' HORZ.  
1"=5' VERT.



CITY OF  
CHATTAHOOGA  
DEPARTMENT  
OF  
TRANSPORTATION

BLYTHE BAILEY

BERTRAN KUYRKENDALL, P.E.

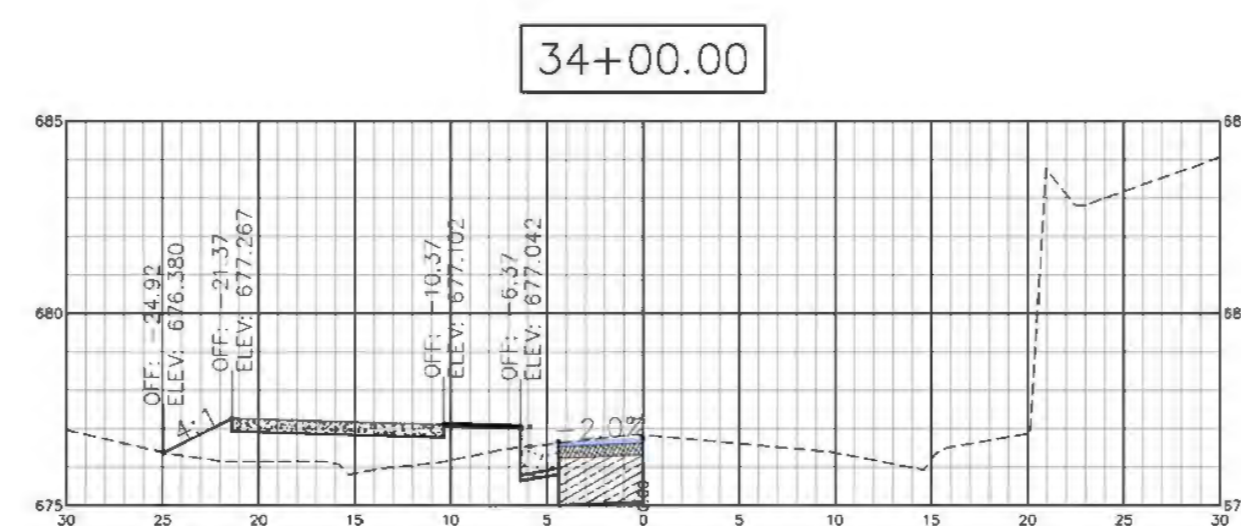
CONTRACT #T-14-021  
RIVERWALK EXTENSION  
ALONG ST. ELMO AVENUE  
(FROM W. 32TH ST. TO TENNESSEE AVE.)

NO.	DATE	REVISION	SIG.
0			

CONTRACT# T-14-021  
SCALE: 1" = 20'  
DRAWN: GEH  
DESIGN: GEH  
CHECKED: BCS

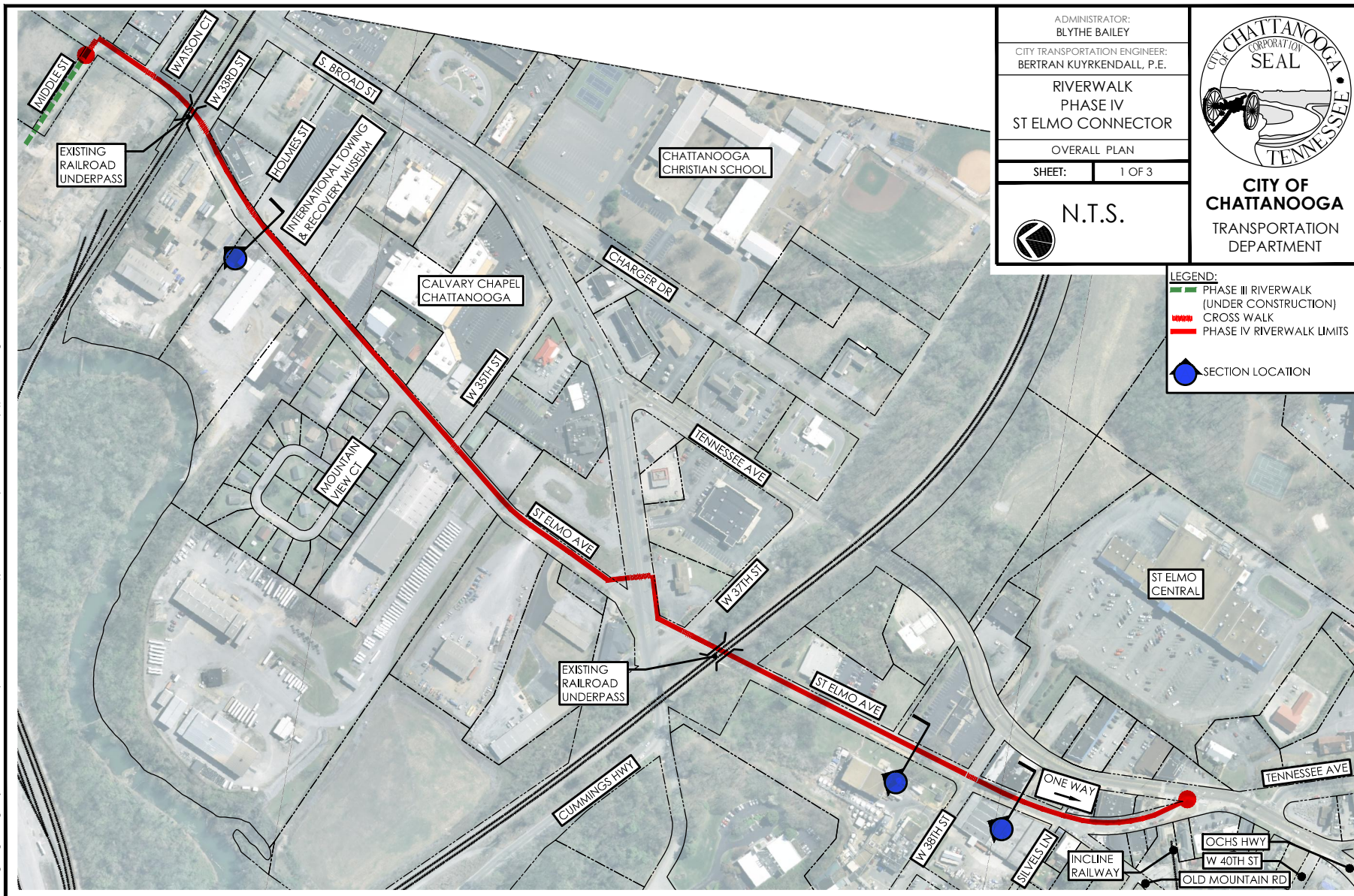
PRELIMINARY  
(SUBJECT TO  
CHANGE)

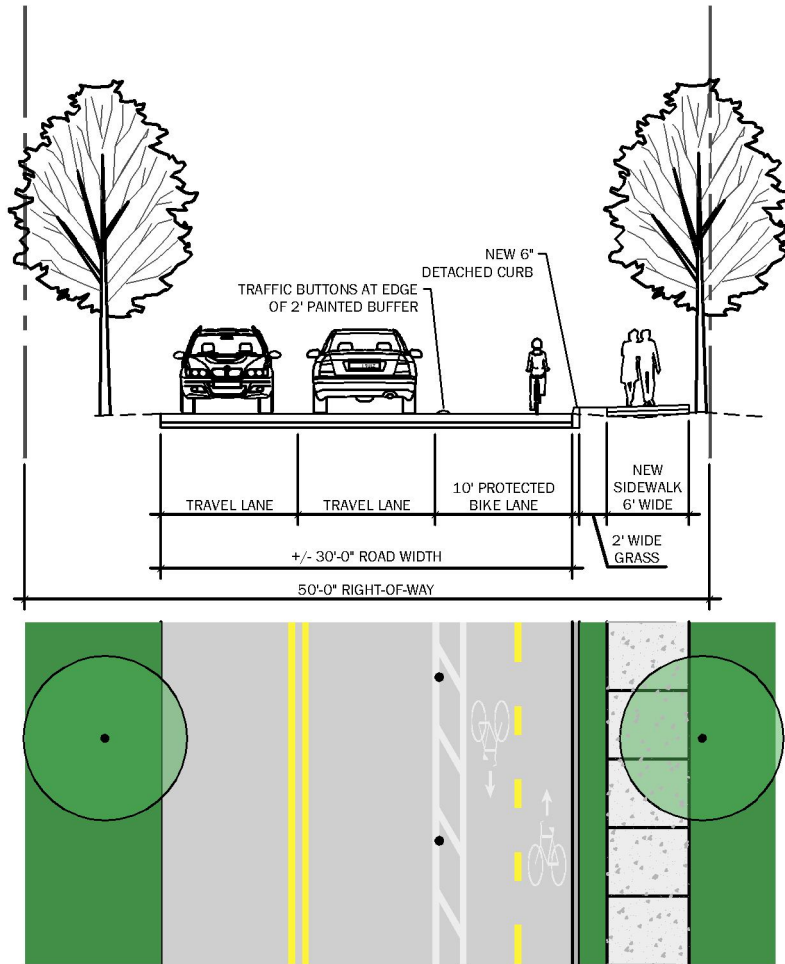
CONTRACT #T-14-021  
RIVERWALK EXTENSION  
ALONG ST. ELMO AVENUE  
(FROM W. 32TH ST. TO TENNESSEE AVE.)



SCALE:  
1"=10' HORZ.  
1"=5' VERT.

T:\Design-Engineering\Projects\T-14-021\_Riverwalks\_V (Middle St. to Incline Railway)\CAD\Riverwalks\_V (Middle st to Th Ave) htp sections.dwg Nov 12 2014 - 2:47pm hoveall





ADMINISTRATOR:  
BLYTHE BAILEY

CITY TRANSPORTATION ENGINEER:  
BERTRAN KUYRKENDALL, P.E.

RIVERWALK  
PHASE IV  
ST ELMO CONNECTOR

TYPICAL SECTION

SHEET: 2 OF 3

N.T.S.

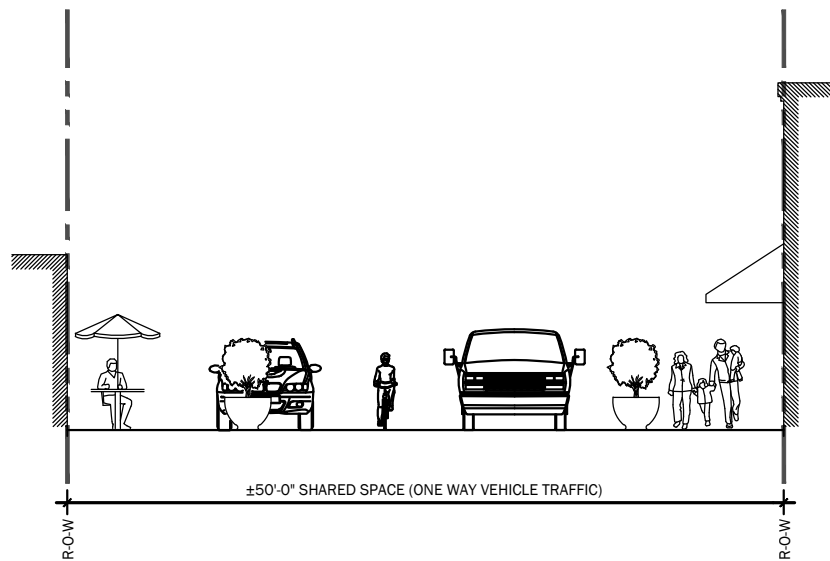


**CITY OF  
CHATTANOOGA**  
TRANSPORTATION  
DEPARTMENT

**A** **ST. ELMO AVE.**  
**BICYCLE & PEDESTRIAN FACILITIES**

MIDDLE ST TO W 38th ST

SCALE: NTS



ADMINISTRATOR:  
BLYTHE BAILEY

CITY TRANSPORTATION ENGINEER:  
BERTRAN KUYRKENDALL, P.E.

RIVERWALK  
PHASE IV  
ST ELMO CONNECTOR

TYPICAL SECTION

SHEET: 3 OF 3

N.T.S.



**CITY OF  
CHATTANOOGA**  
TRANSPORTATION  
DEPARTMENT

**B** **ST. ELMO AVE.**  
**SHARED STREET / WOONERF**

W. 38th ST. TO TENNESSEE AVE

SCALE: NTS