

ARLINGTON VIRGINIA

Arlington County Water Pollution Control Plant
Preliminary Treatment Upgrades
WPB2 Phase 9B

Pre-Bid Meeting
Solicitation Number: 21-DES-ITB-477
May 12, 2021

5/12/2021 PTB Upgrades, (WPB2) Phase 9B 1

1

Agenda

- Solicitation Overview
- General Project Overview
 - Site Overview
 - Areas of Work
 - Maintenance of Plant Operations
- Site Visit Scheduling
- Solicitation Attachments
 - Pricing Sheet
- Questions

5/12/2021 **ARLINGTON VIRGINIA** PTB Upgrades, (WPB2) Phase 9B 2

2

Solicitation Overview

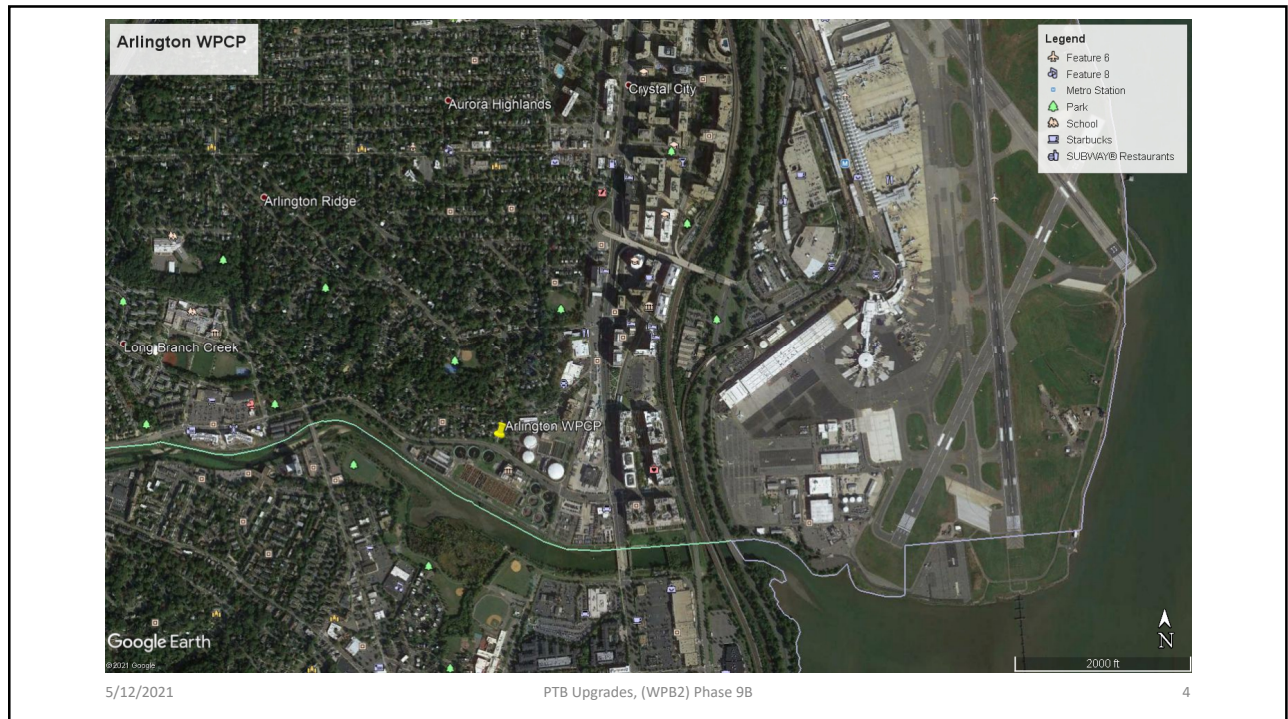
- Invitation to Bid

5/12/2021

PTB Upgrades, (WPB2) Phase 9B

3

3

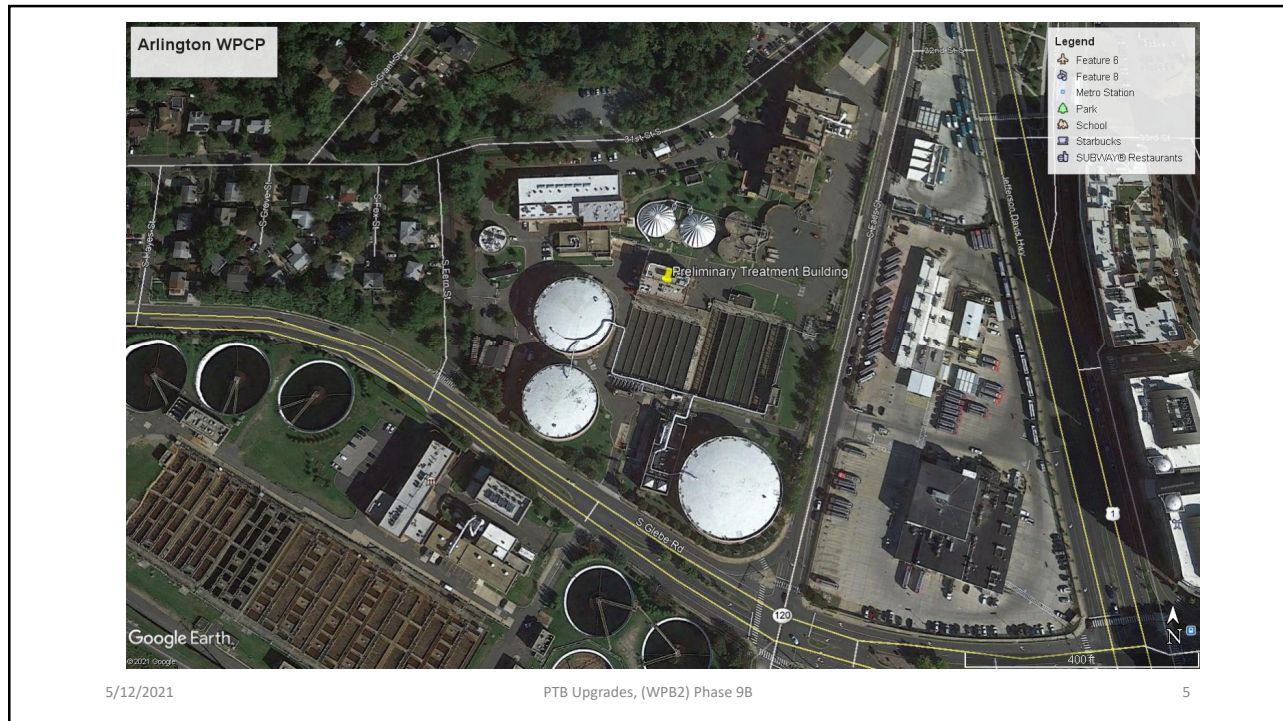


5/12/2021

PTB Upgrades, (WPB2) Phase 9B

4

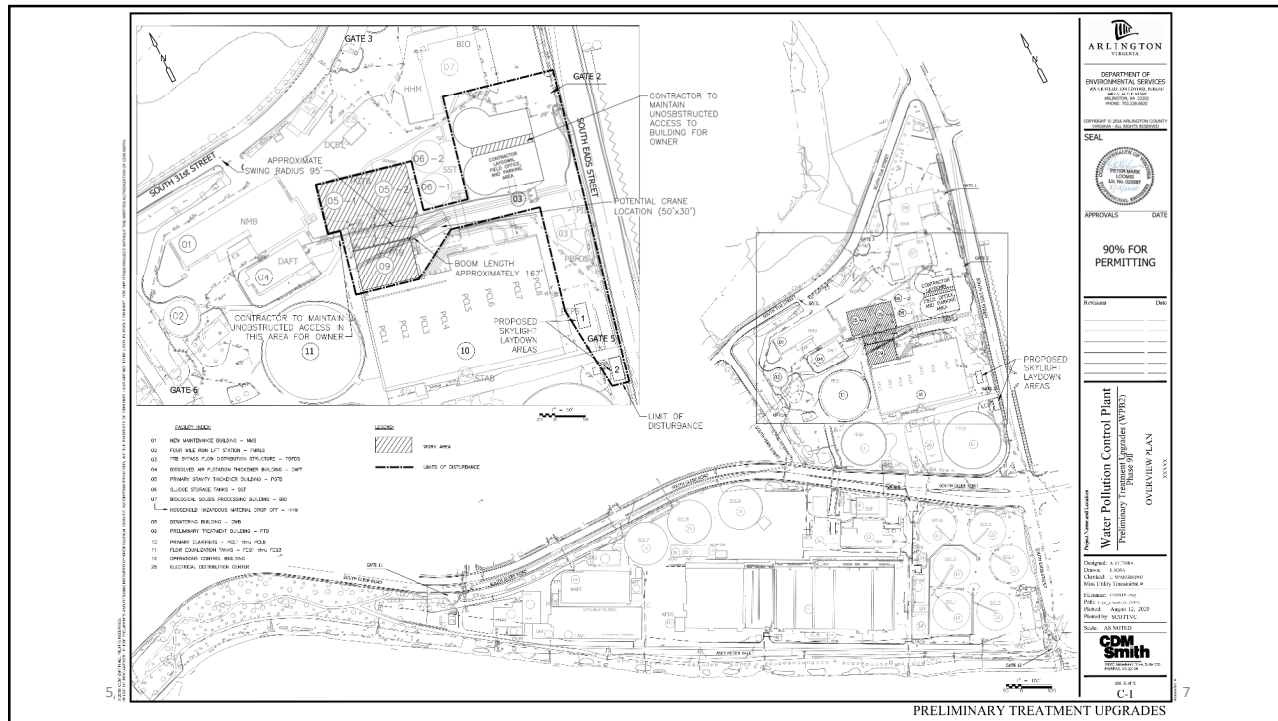
4



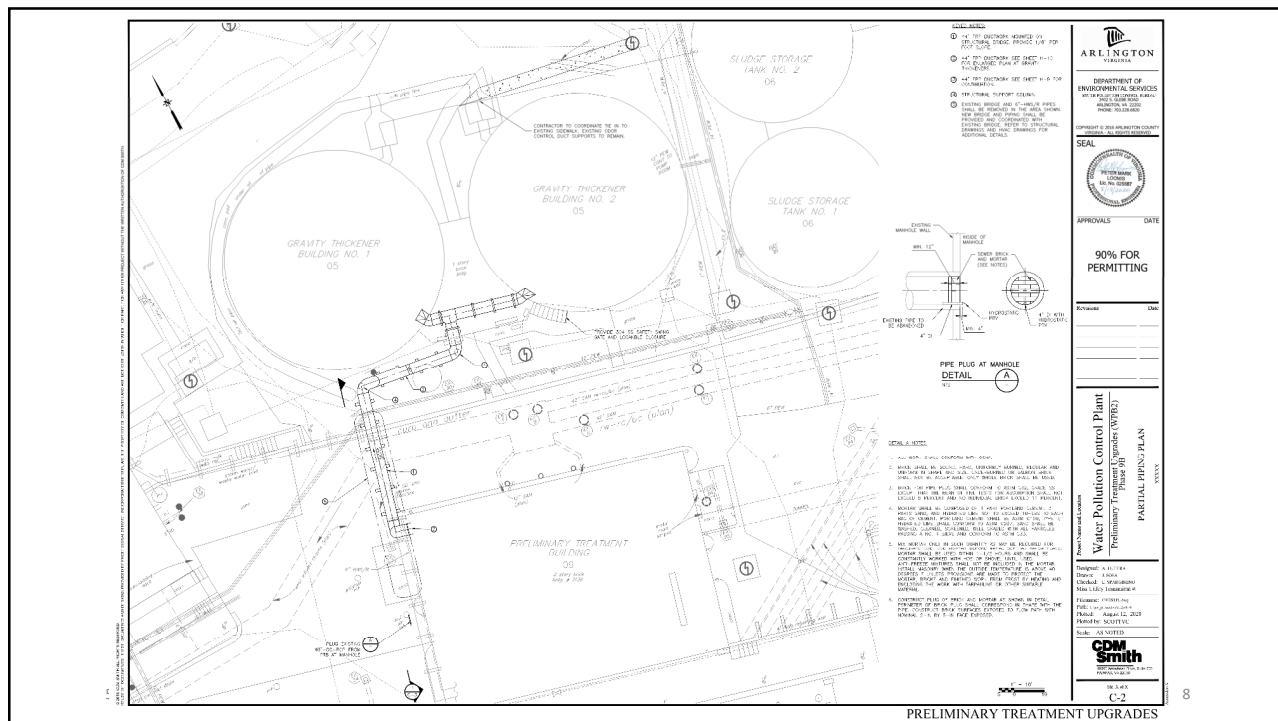
5



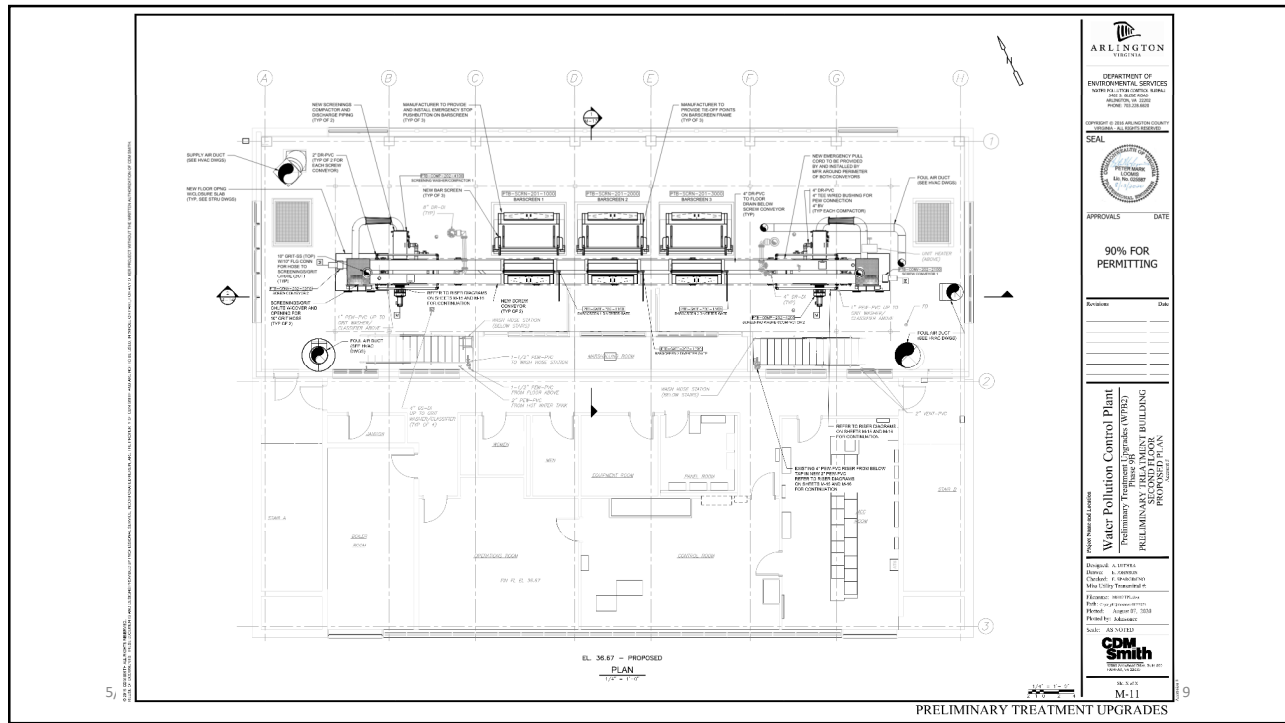
6



7



8



9



5/12/2021

PTB Upgrades, (WPC2) Phase 9B

10

10



5/12/2021

PTB Upgrades, (WPB2) Phase 9B

11

11



5/12/2021

PTB Upgrades, (WPB2) Phase 9B

12

12



5/12/2021



PTB Upgrades, (WPB2) Phase 9B

13

13



5/12/2021



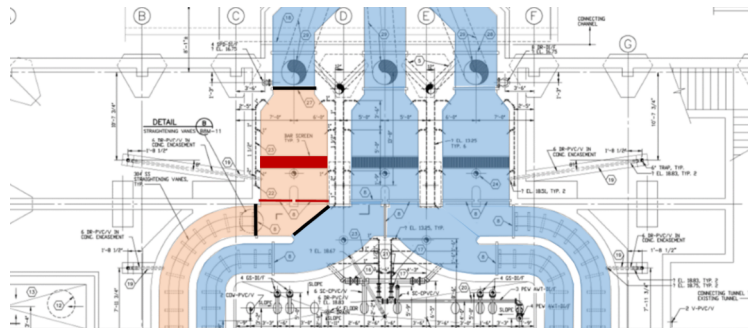
PTB Upgrades, (WPB2) Phase 9B

14

14

Maintenance Of Plant Operations (MOPO)

- See Specification Section 018100
 - One screen replaced at a time
 - Multiple trips by Vendors and Subs
- Buildings will remain fully occupied and in operation throughout construction



5/12/2021

PTB Upgrades, (WPB2) Phase 9B

15

15

Mandatory Site Visits

- Request site visits via email:
 - lracey@arlingtonva.us &
 - vmoorehead@arlingtonva.us
- We will provide available dates/times.
- Once confirmed, you will get a calendar invite.
- Subcontractors can request visits too.
- Attendees can take photos and videos.



All questions must be submitted through Vendor Registry. No questions will be answered during the site visit.

16

Mandatory Site Visits

PPE:

- Visitors should wear long pants, hard hats, safety vests, safety glasses, safety shoes, and a face covering

COVID-19 Restrictions:

- Site visits are limited to one visit with up to two people per company.
- Up to three companies may attend at one time.
- Attendees should send a substitute if they currently have COVID-19 symptoms or have been in close contact with someone who has tested positive within the last 14 days.

17

Solicitation Attachments

- Pricing Sheet
- Project Specification
- Project Drawings
- Contractor Safety Standard
- All Addenda will be posted online

5/12/2021

PTB Upgrades, (WPB2) Phase 9B

18

18

Pricing Sheet

ATTACHMENT A - PRICING SHEET						
FURNISHING ALL LABOR, MATERIALS, AND EQUIPMENT FOR THE CONSTRUCTION OF PRELIMINARY TREATMENT BUILDING UPGRADE (WPB2) - PHASE 9B						
FAILURE TO PROVIDE A PRICE FOR ALL ITEMS, OR ANY MODIFICATIONS OR ADDITIONS TO THE BID FORM WILL RESULT IN BID REJECTION.						
BLUE CELLS ARE REQUIRED. BIDDERS SHALL PROVIDE THEIR BID PRICES IN THE CELLS HIGHLIGHTED IN BLUE BELOW. BIDDERS SHALL INCLUDE A BID PRICE FOR ALL ITEMS. BLUE CELLS WILL BE USED TO DETERMINE THE BID AWARD.						
GREEN CELLS ARE OPTIONAL. BIDDERS SHALL PROVIDE THEIR PRICING FOR THE ITEMS LISTED UNDER "OPTIONAL ITEMS". OPTIONAL ITEMS WILL NOT FACTOR INTO THE BID AWARD, BUT MAY BE INCLUDED IN THE CONTRACT AWARD, AT THE COUNTY'S DISCRETION.						
PROJECT COST BREAKDOWNS						
ITEM	DESCRIPTION	MANUFACTURER	QTY	UNIT	UNIT PRICE	TOTAL
1	Mobilization and Demobilization (Not to Exceed 5% of the Total Bid Amount) - Labor, Materials, Equipment, Etc.		1	LS		
2	Demolition - Labor, Materials, Equipment, Temporary Construction, Etc.		1	LS		
Major Work						
ITEM	DESCRIPTION	MANUFACTURER	QTY	UNIT	UNIT PRICE	TOTAL
3	Screening Equipment and Installation - Specification Section 462114		1	LS		
4	Screening Handling Equipment and Installation - Includes Isolation Gates, Screw Conveyors, and Washer Compactors		1	LS		
5	Scum Concentrator Equipment and Installation		1	LS		
6	HVAC and Odor Control Equipment and Installation - Includes Ductwork, Fans, Combustible Gas Detectors, and Overhead Crossing		1	LS		
Miscellaneous						
ITEM	DESCRIPTION	MANUFACTURER	QTY	UNIT	UNIT PRICE	TOTAL
7	All Other Work		1	LS		
8	OVERHEAD, PROFIT, TAXES, ETC.		1	LS		
LUMP SUM TOTAL BID PRICE						\$0.00

5/12/2021

PTB Upgrades, (WPB2) Phase 9B

19

19

Pricing Sheet

ATTACHMENT A - PRICING SHEET						
FURNISHING ALL LABOR, MATERIALS, AND EQUIPMENT FOR THE CONSTRUCTION OF PRELIMINARY TREATMENT BUILDING UPGRADE (WPB2) - PHASE 9B						
FAILURE TO PROVIDE A PRICE FOR ALL ITEMS, OR ANY MODIFICATIONS OR ADDITIONS TO THE BID FORM WILL RESULT IN BID REJECTION.						
BLUE CELLS ARE REQUIRED. BIDDERS SHALL PROVIDE THEIR BID PRICES IN THE CELLS HIGHLIGHTED IN BLUE BELOW. BIDDERS SHALL INCLUDE A BID PRICE FOR ALL ITEMS. BLUE CELLS WILL BE USED TO DETERMINE THE BID AWARD.						
GREEN CELLS ARE OPTIONAL. BIDDERS SHALL PROVIDE THEIR PRICING FOR THE ITEMS LISTED UNDER "OPTIONAL ITEMS". OPTIONAL ITEMS WILL NOT FACTOR INTO THE BID AWARD, BUT MAY BE INCLUDED IN THE CONTRACT AWARD, AT THE COUNTY'S DISCRETION.						
PROJECT COST BREAKDOWNS						
OPTIONAL ITEMS						
ITEM	DESCRIPTION	MANUFACTURER	QTY	UNIT	UNIT PRICE	TOTAL
Option 1	Additional Cost for Screening Equipment - Dupperon Feedrake (C - See Specification Section 462114		1	LS		
Option 2	Deduct for Alternative Screening Equipment Model or Manufacturer - See Specification Section 462114. Enter N/A in both green cells if not proposing an alternative manufacturer.		1	LS		
Bidder Name: _____						

5/12/2021

PTB Upgrades, (WPB2) Phase 9B

20

20

Questions?

ARLINGTON
VIRGINIA

Arlington County Water Pollution Control Plant
Preliminary Treatment Upgrades
WPB2 Phase 9B

Solicitation Number: 21-DES-ITB-477

5/12/2021

PTB Upgrades, (WPB2) Phase 9B

21