

# Tom Green County



113 W. Beauregard  
San Angelo, Texas 76903  
325-659-6500/Fax 325-659-5441

## RFB 22-001 Burma Rd. Repair

October 5, 2021

### ADDENDUM NO 1: Notice to Bidders

1. The new paving appears to widen center of the curve is the widest point going to be in the current centerline or on the current inside edge of the Road??

**TGC Response: The center line from start to finish on this job will stay the same (current centerline).**

2. What size is the rebar for the concrete?

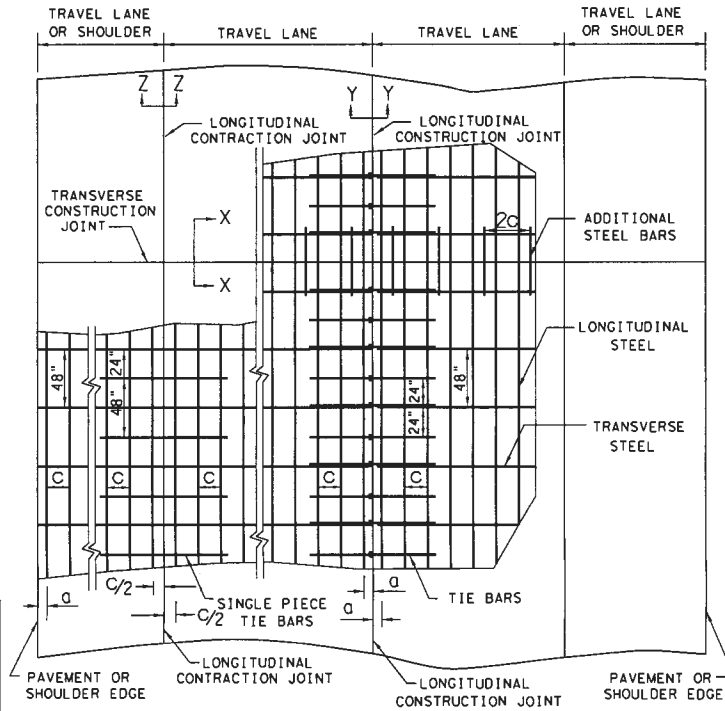
**TGC Response: Please see specifications sheet below for “Continuously Reinforced Concrete Pavement CRCP (1)-20”.**

DISCLAIMER: The use of this standard is governed by the "Texas Engineering Practice Act". No warranty of any kind is made by TxDOT for any purpose whatsoever. TxDOT assumes no responsibility for the conversion of this standard to other formats or for incorrect results or damages resulting from its use.

DATE: FILE:

SLAB THICKNESS AND BAR SIZE		REGULAR STEEL BARS	FIRST SPACING AT EDGE OR JOINT	ADDITIONAL STEEL BARS AT TRANSVERSE CONSTRUCTION JOINT (SECTION X-X)	
T (IN.)	BAR SIZE	SPACING C (IN.)	SPACING D (IN.)	SPACING 2 X C (IN.)	LENGTH L (IN.)
7.0	#5	6.5	3 TO 4	13	50
7.5	#5	6.0	3 TO 4	12	50
8.0	#6	9.0	3 TO 4	18	50
8.5	#6	8.5	3 TO 4	17	50
9.0	#6	8.0	3 TO 4	16	50
9.5	#6	7.5	3 TO 4	15	50
10.0	#6	7.0	3 TO 4	14	50
10.5	#6	6.75	3 TO 4	13.5	50
11.0	#6	6.5	3 TO 4	13	50
11.5	#6	6.25	3 TO 4	12.5	50
12.0	#6	6.0	3 TO 4	12	50
12.5	#6	5.75	3 TO 4	11.5	50
13.0	#6	5.5	3 TO 4	11	50

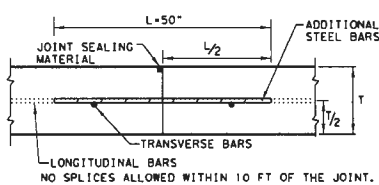
SLAB THICKNESS (IN.)	TRANSVERSE STEEL		TIE BARS AT LONGITUDINAL CONTRACTION JOINT (SECTION Z-Z)		TIE BARS AT LONGITUDINAL CONSTRUCTION JOINT (SECTION Y-Y)	
	BAR SIZE	SPACING (IN.)	BAR SIZE	SPACING (IN.)	BAR SIZE	SPACING (IN.)
7.0 - 7.5	#5	48	#5	48	#5	24
8.0 - 13.0	#5	48	#6	48	#6	24



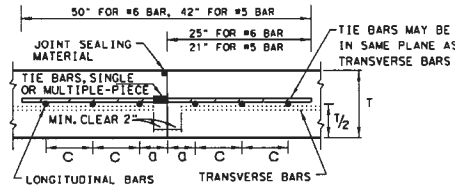
TYPICAL PAVEMENT LAYOUT  
PLAN VIEW (NOT TO SCALE)

GENERAL NOTES

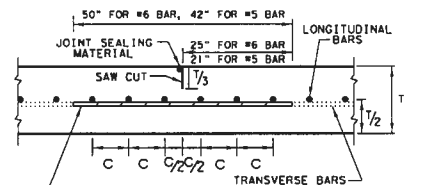
1. DETAILS FOR PAVEMENT WIDTH, PAVEMENT THICKNESS AND THE CROWN CROSS-SLOPE SHALL BE SHOWN ELSEWHERE IN THE PLANS. PAVEMENTS WIDER THAN 100 FT. WITHOUT A FREE LONGITUDINAL JOINT ARE NOT COVERED BY THIS STANDARD.
2. USE COARSE AGGREGATES WITH A RATED COEFFICIENT OF THERMAL EXPANSION (COTE) OF NOT MORE THAN  $5.5 \times 10^{-6}$  IN./IN./°F AS LISTED IN THE CONCRETE RATED SOURCE QUALITY CATALOG (CRSOC).
3. ALL THE REINFORCING STEEL AND TIE BARS SHALL BE DEFORMED STEEL BARS CONFORMING TO ASTM A 615 (GRADE 60) OR ASTM A 996 (GRADE 60) OR ABOVE. STEEL BAR SIZES AND SPACINGS SHALL CONFORM TO TABLE NO. 1 AND TABLE NO. 2.
4. STEEL BAR PLACEMENT TOLERANCE SHALL BE +/- 1 IN. HORIZONTALLY AND +/- 0.5 IN. VERTICALLY. CALCULATED AVERAGE BAR SPACING (CONCRETE PLACEMENT WIDTH / NUMBER OF LONGITUDINAL BARS) SHALL CONFORM TO TABLE NO. 1.
5. PAVEMENT WIDTHS OF MORE THAN 15 FT. SHALL HAVE A LONGITUDINAL JOINT (SECTION Z-Z OR SECTION Y-Y). THESE JOINTS SHALL BE LOCATED WITHIN 6 IN. OF THE LANE LINE UNLESS THE JOINT LOCATION IS SHOWN ELSEWHERE ON THE PLANS.
6. THE SAW CUT DEPTH FOR THE LONGITUDINAL CONTRACTION JOINT (SECTION Z-Z) SHALL BE ONE THIRD OF THE SLAB THICKNESS (T/3).
7. WHEN TYING CONCRETE GUTTER AT A LONGITUDINAL JOINT, THE TIE BAR LENGTH OR POSITION MAY BE ADJUSTED. PROVIDE 3 IN. OF CONCRETE COVER FROM THE BACK OF GUTTER TO THE END OF TIE BAR.
8. REPLACE MISSING OR DAMAGED TIE BARS WITHOUT ADDITIONAL COMPENSATION BY DRILLING MIN. 10 IN. DEEP AND GROUTING TIE BARS WITH TYPE III, CLASS C EPOXY. MEET THE PULL-OUT TEST REQUIREMENTS IN ITEM 361.
9. OMIT TIE BARS LOCATED WITHIN 18-IN. OF THE TRANSVERSE CONSTRUCTION JOINTS (SECTION X-X). USE HAND-OPERATED IMMERSION VIBRATORS TO CONSOLIDATE THE CONCRETE ADJACENT TO ALL FORMED JOINTS.
10. LONGITUDINAL REINFORCING STEEL SPLICES SHALL BE A MINIMUM OF 25 IN. STAGGER THE LAP LOCATIONS SO THAT NO MORE THAN 1/3 OF THE LONGITUDINAL STEEL IS SPLICED IN ANY GIVEN 12-FT. WIDTH AND 2-FT. LENGTH OF THE PAVEMENT.
11. THE DETAIL FOR THE JOINT SEALANT AND RESERVOIR IS SHOWN ON STANDARD SHEET "CONCRETE PAVING DETAILS, JOINT SEALS."



TRANSVERSE CONSTRUCTION JOINT  
SECTION X - X



LONGITUDINAL CONSTRUCTION JOINT  
SECTION Y - Y

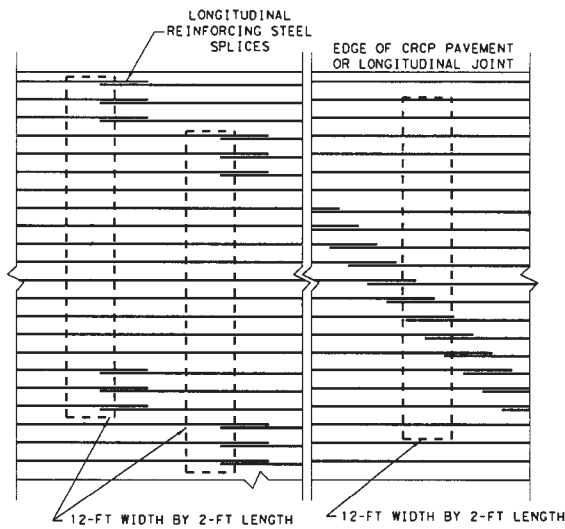
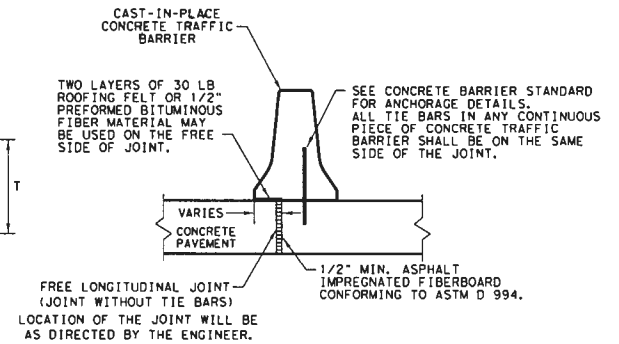
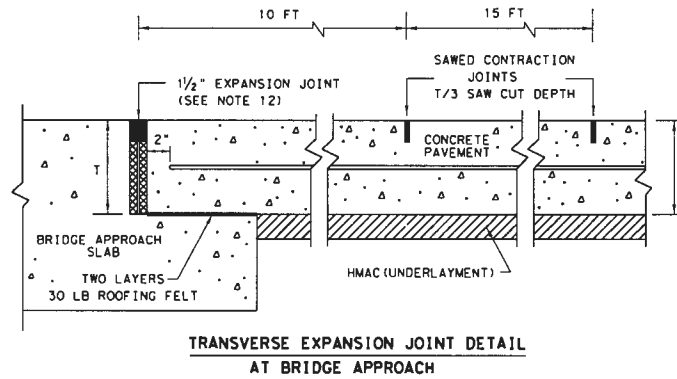


LONGITUDINAL CONTRACTION JOINT  
SECTION Z - Z

		Design Division Standard	
<b>CONTINUOUSLY REINFORCED CONCRETE PAVEMENT</b> <b>ONE LAYER STEEL BAR PLACEMENT</b> <b>T - 7 TO 13 INCHES</b> <b>CRCP (1) - 20</b>			
FILE: crcp120.dgn	DATE: TxDOT	EXCHG:	DATE: AM
© TxDOT: APRIL 2020	CONT. SECT.	JOB	HIGHWAY
REVISIONS 10/10/2011 ADD 30" MIN. TIE BAR L <sup>2</sup> 04/09/2013 REMOVE 1" AND 1.5" ADD TIE REQUIREMENTS 06/05/2017 DATE AS RATED 4.3			
0151	COUNTY	SHEET NO.	

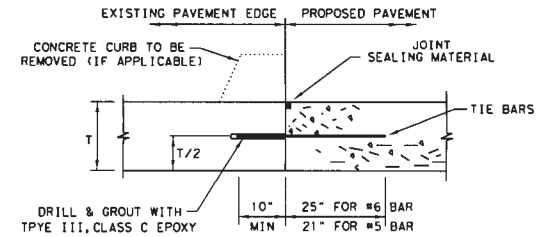
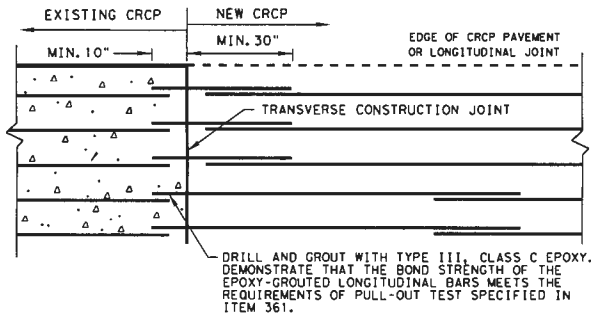
DISCLAIMER:  
The use of this standard is governed by the "Texas Engineering Practice Act". No warranty of any kind is made by TxDOT for any purpose whatsoever. TxDOT assumes no responsibility for the conversion of this standard to other formats or for incorrect results or damages resulting from its use.

DATE:  
FILE:

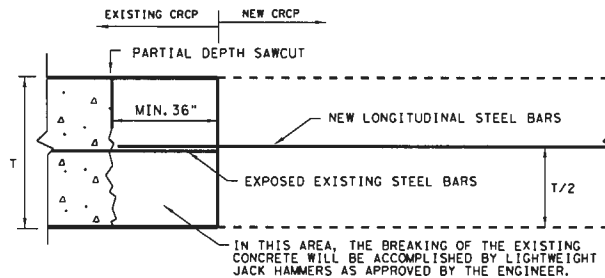


STAGGER THE LAP LOCATIONS SO THAT NO MORE THAN 1/3 OF THE LONGITUDINAL STEEL IS SPLICED IN ANY GIVEN 12-FT. WIDTH AND 2-FT. LENGTH OF THE PAVEMENT. ANY OTHER LAP CONFIGURATION MEETING THIS REQUIREMENT WILL BE ALLOWED.

EXAMPLES OF LAP CONFIGURATION PLAN VIEW (NOT TO SCALE)



1. BEFORE WIDENING WORK, DEMONSTRATE THAT THE BOND STRENGTH OF THE EPOXY-GROUTED TIE BARS MEETS THE REQUIREMENTS OF PULL-OUT TEST SPECIFIED IN ITEM 361.
2. SPACE TIE BARS AT 24" SPACING. USE #6 TIE BARS FOR 8" AND THICKER SLABS, USE #5 TIE BARS FOR LESS THAN 8" THICK SLABS.



OPTION B: BREAKBACK AND LAP TRANSVERSE TIE JOINT DETAIL EXISTING CRCP TO NEW CRCP

SHEET 2 OF 2

		Design Division Standard	
<b>CONTINUOUSLY REINFORCED CONCRETE PAVEMENT</b> <b>ONE LAYER STEEL BAR PLACEMENT</b> <b>T - 7 TO 13 INCHES</b> <b>CRCP (1) - 20</b>			
FILE: crcp120.dgn	DRW: TxDOT	CHK: KM	DES: AN
© TxDOT APRIL 2020	COM: SECT	JOB:	WIDENING
REVISIONS			
03/16/2020	REMOVED TABLE 1A	DIST:	COUNTY:
			SHEET NO.:

Please include this signed addendum with your Response.

Sincerely,

A handwritten signature in blue ink, appearing to read 'D.K.', is written over a light gray rectangular background.

Dustin Klein  
Procurement Supervisor  
Tom Green County

\_\_\_\_\_

Company

\_\_\_\_\_

Date

\_\_\_\_\_

Signature

\_\_\_\_\_

Please Print Name and Title