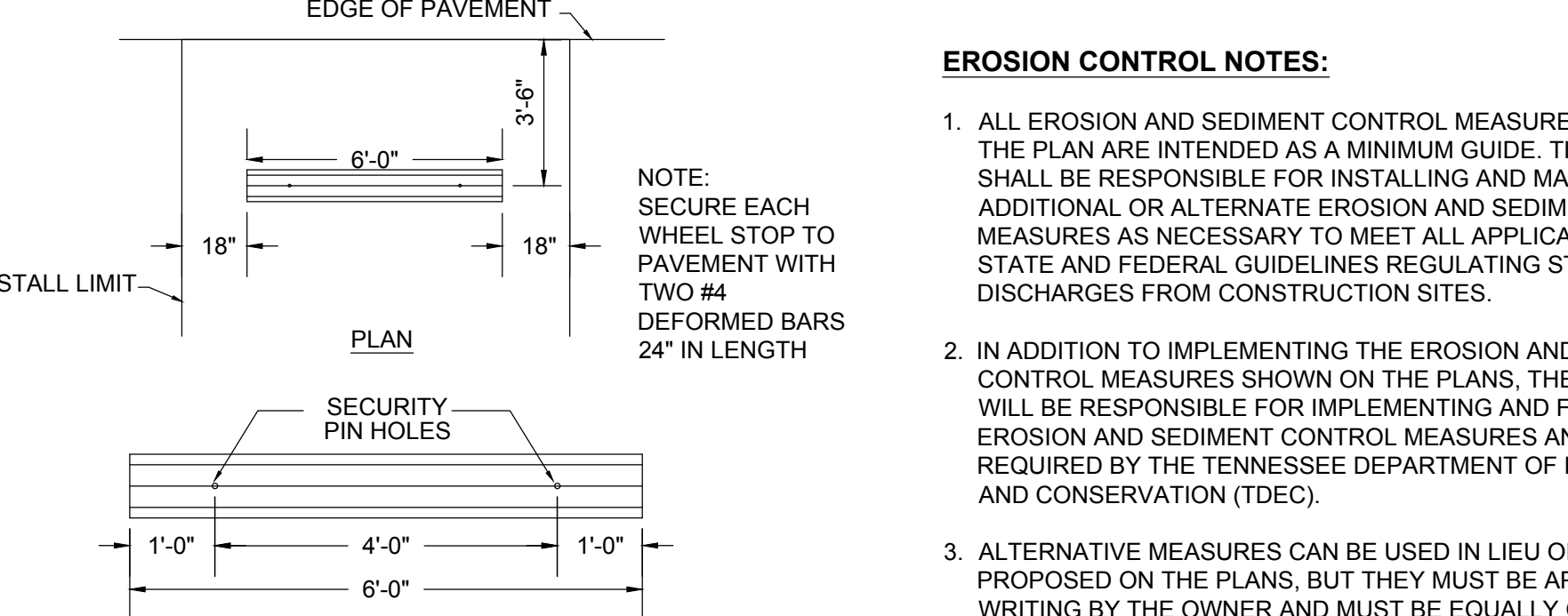
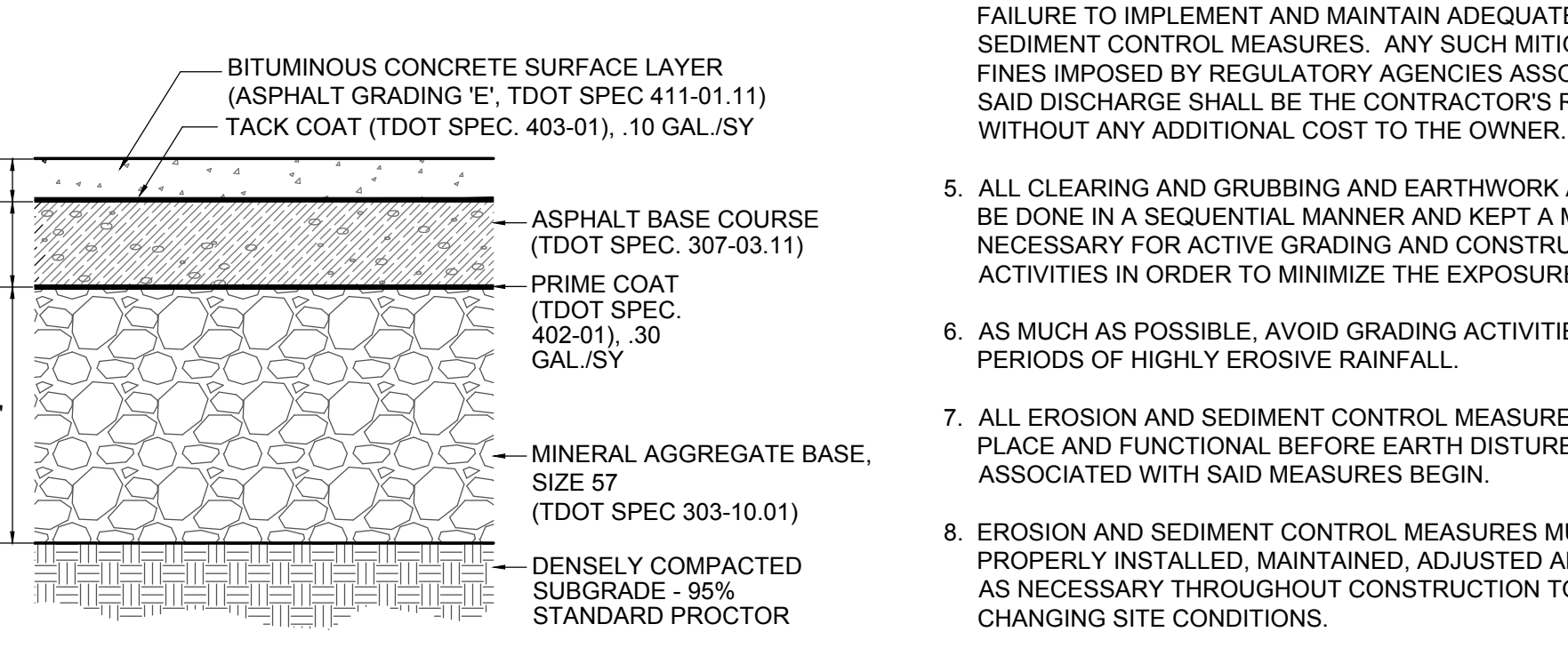


PARKING LAYOUT PLAN - EXISTING CANADA ROAD
SCALE: 1" = 30'-0"

RIP-RAP BERM SECTION A-A'
SCALE: 1/4" = 1'-0", H. AND V.



CONCRETE WHEEL STOPS
NOT TO SCALE



ASPHALT PAVEMENT DETAIL
NOT TO SCALE

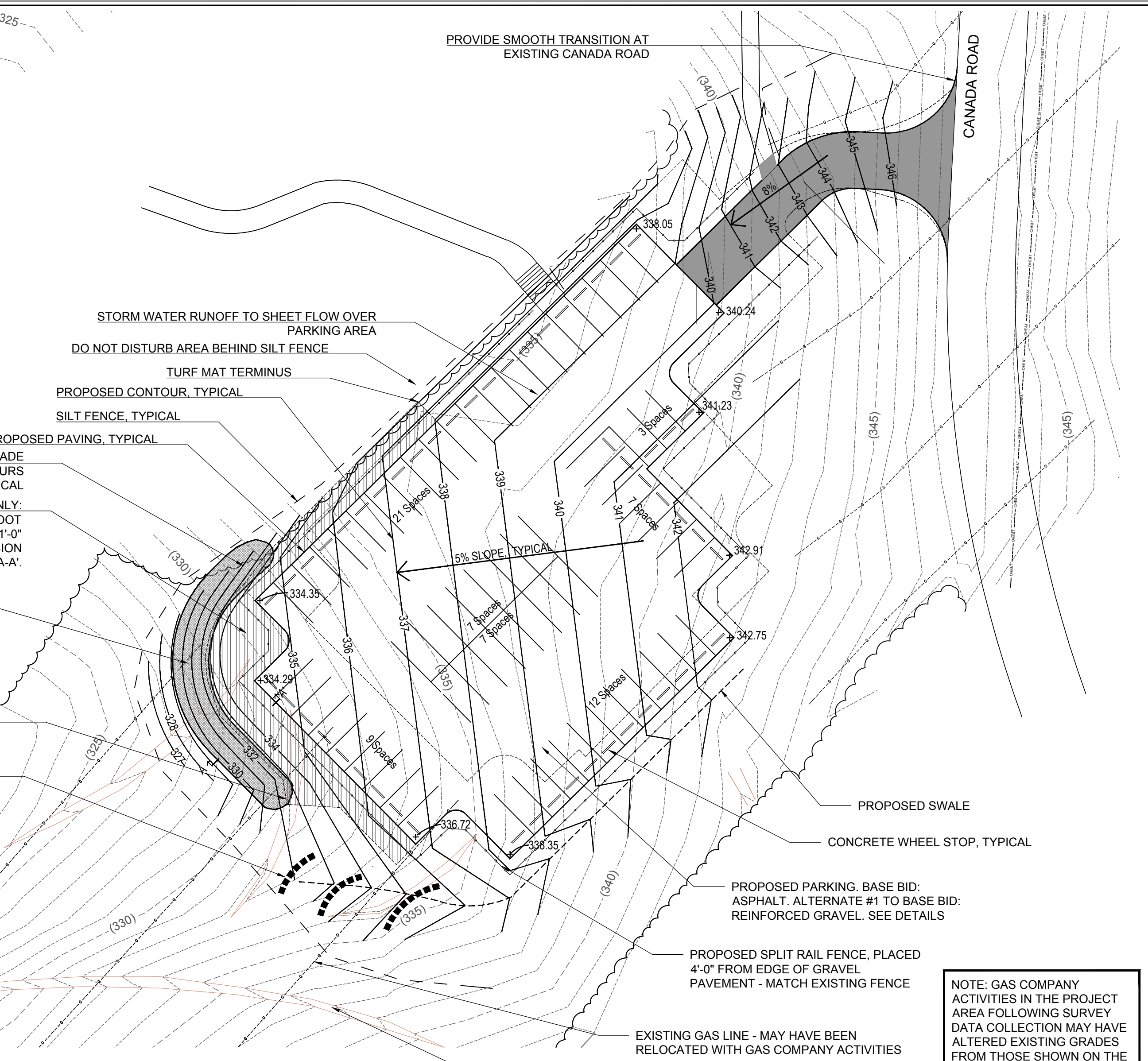
LEGEND:

PROPOSED SPOT ELEVATIONS
+ 292.37

CONTOURS
---(290)--- EXISTING
---290--- PROPOSED

- NOTES:**
- TOTAL DISTURBED SITE AREA IS 42,820 SQUARE FEET.
 - BASE BID INCLUDES ALL IMPROVEMENTS SHOWN, INCLUDING SPLIT RAIL FENCE, CONCRETE WHEEL STOPS, ASPHALT PARKING LOT WITH PAVEMENT STRIPING, STONE BERM, AND TURF REINFORCEMENT MAT. ALTERNATE # TO THE BASE BID INCLUDES SPLIT RAIL FENCE, CONCRETE WHEEL STOPS, ASPHALT ACCESS DRIVE AND REINFORCED GRAVEL PARKING LOT.

- BASE BID ONLY:**
- TURF REINFORCEMENT MAT - WIDTH VARIES, MINIMUM 10-FOOT WIDTH ALONG EDGES OF PAVEMENT. MAT TO EXTEND MIN. 1'-0" UNDER RIP-RAP BERM TO EDGE OF PAVEMENT - SEE EROSION CONTROL NOTE #16 AND BERM SECTION A-A'.
 - MACHINED RIP-RAP CLASS A-1 BERM (TDOT SPEC 709-05.06), WIDTH AS SHOWN IN BERM SECTION A-A', TO BE PLACED DOWN-SLOPE OF PARKING AREA FOR STORM WATER DISSIPATION. SET TOP OF BERM AT APPROXIMATE GRADE OF PARKING AREA. SEE LAYOUT PLAN FOR BERM CENTER LINE LOCATION.
 - EXTEND TURF MAT UNDER BERM MIN. 1'-0", TYPICAL.
 - DIVERT STORM WATER RUNOFF WITH LOW EARTH BERMS AS NEEDED TO REDUCE FLOW VELOCITY. VERIFY PLACEMENT DOES NOT CAUSE BACKUP OF STORM WATER INTO PARKING AREA.

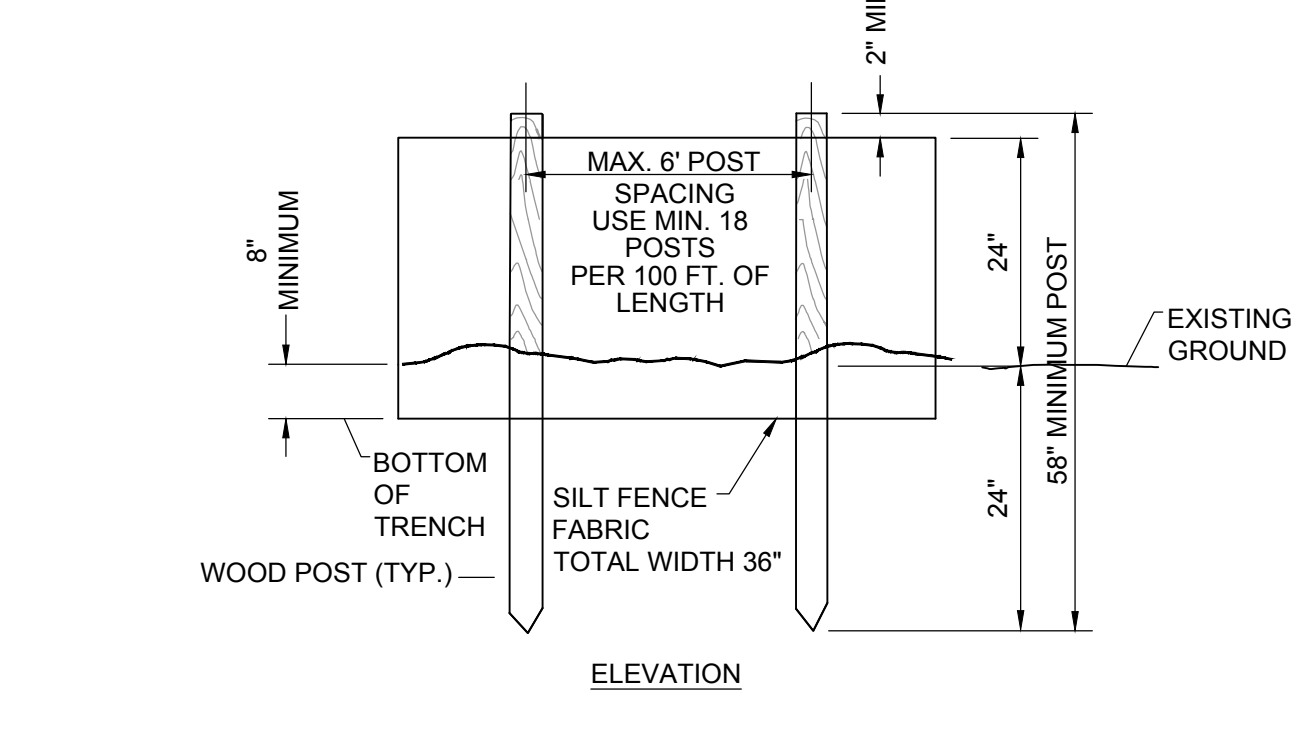
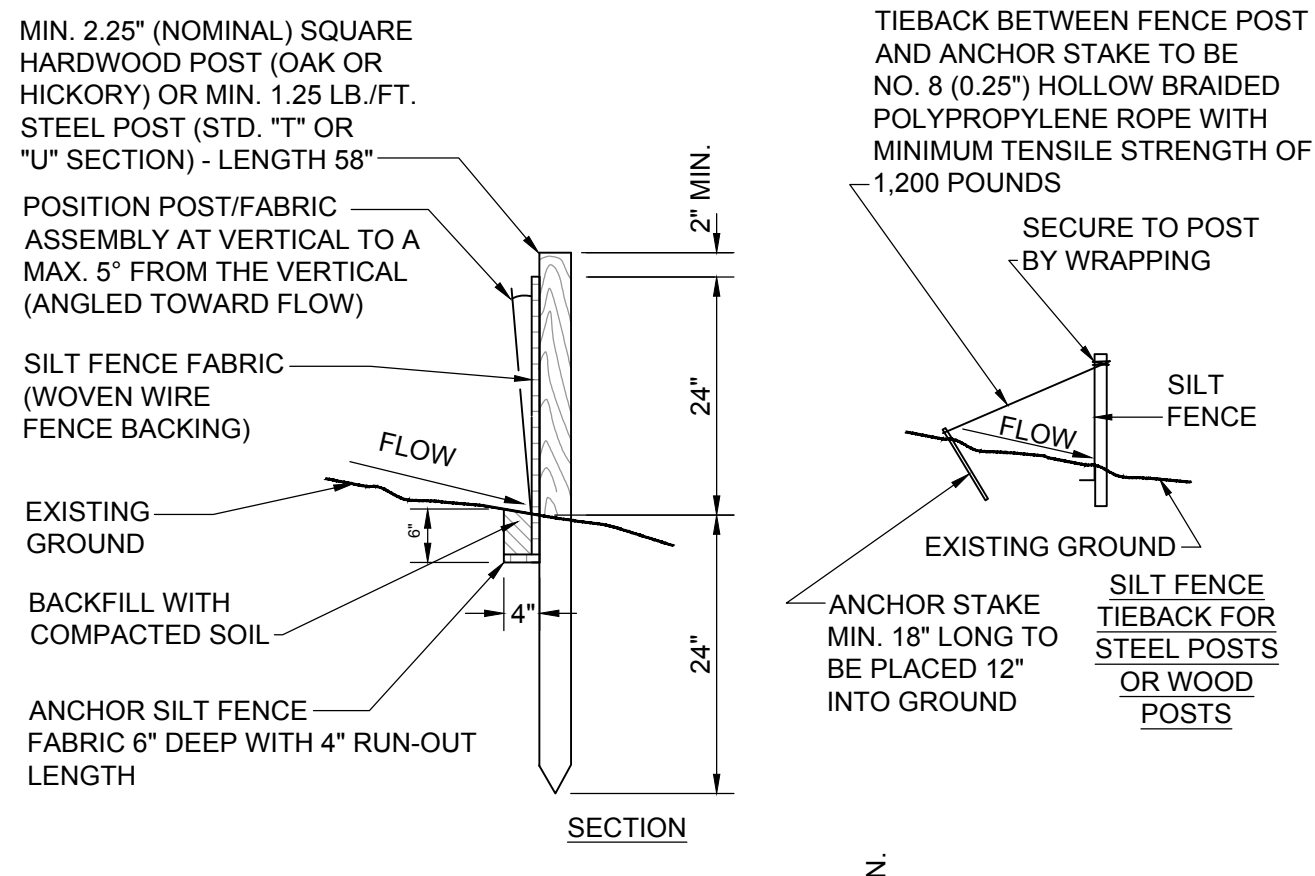


GRADING PLAN
SCALE: 1" = 30'-0"

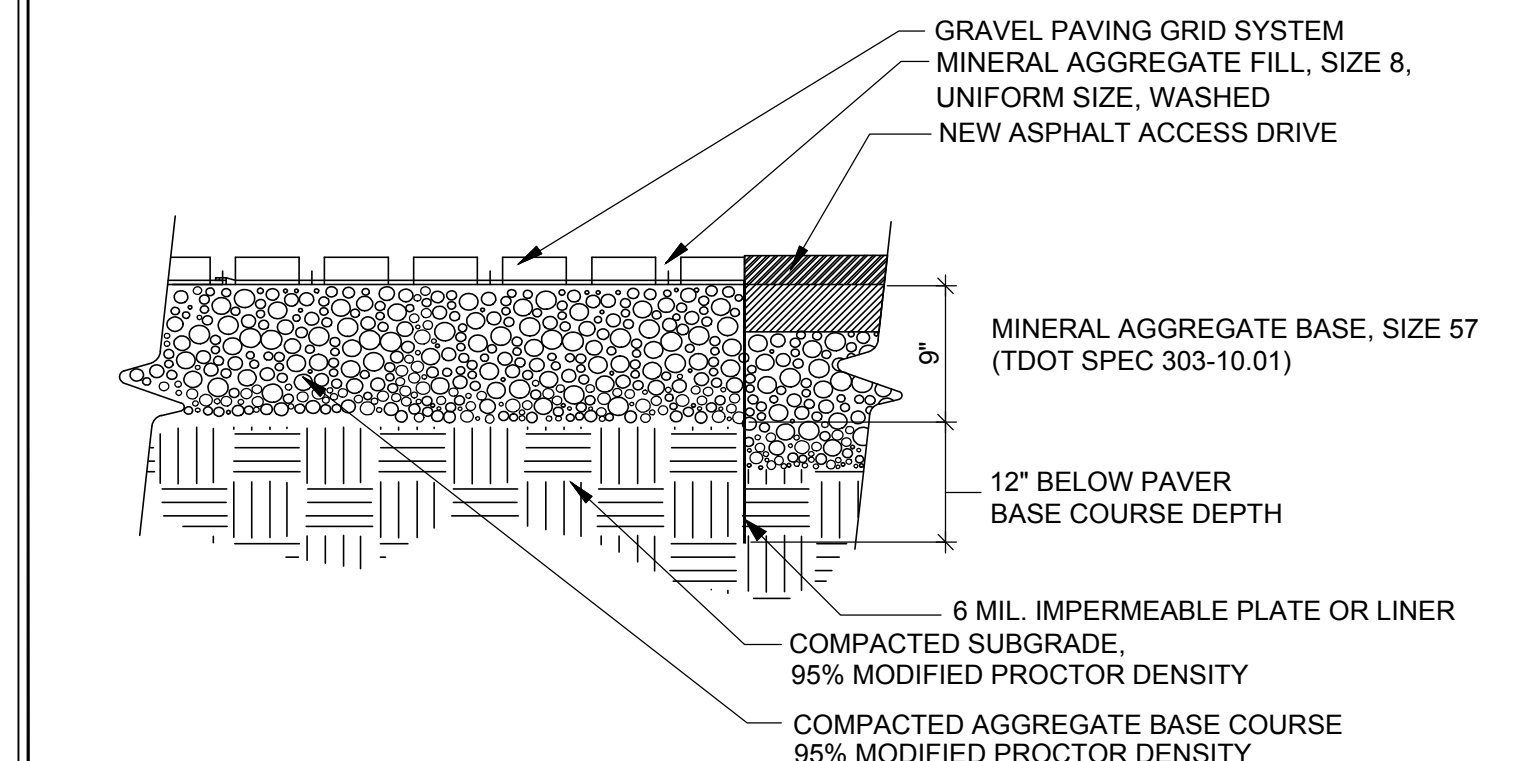
EROSION CONTROL NOTES:

- ALL EROSION AND SEDIMENT CONTROL MEASURES SHOWN ON THE PLAN ARE INTENDED AS A MINIMUM GUIDE. THE CONTRACTOR SHALL BE RESPONSIBLE FOR INSTALLING AND MAINTAINING ADDITIONAL OR ALTERNATE EROSION AND SEDIMENT CONTROL MEASURES AS NECESSARY TO MEET ALL APPLICABLE LOCAL, STATE AND FEDERAL GUIDELINES REGULATING STORM WATER DISCHARGES FROM CONSTRUCTION SITES.
- IN ADDITION TO IMPLEMENTING THE EROSION AND SEDIMENT CONTROL MEASURES SHOWN ON THE PLANS, THE CONTRACTOR WILL BE RESPONSIBLE FOR IMPLEMENTING AND FOLLOWING ALL EROSION AND SEDIMENT CONTROL MEASURES AND PRACTICES REQUIRED BY THE TENNESSEE DEPARTMENT OF ENVIRONMENT AND CONSERVATION (TDEC).
- ALTERNATIVE MEASURES CAN BE USED IN LIEU OF MEASURES PROPOSED ON THE PLANS, BUT THEY MUST BE APPROVED IN WRITING BY THE OWNER AND MUST BE EQUALLY OR MORE EFFECTIVE THAN THE MEASURES PROPOSED.
- THE CONTRACTOR SHALL BE RESPONSIBLE FOR MITIGATING ANY OFF-SITE POLLUTED DISCHARGES WHICH RESULT FROM THE FAILURE TO IMPLEMENT AND MAINTAIN ADEQUATE EROSION AND SEDIMENT CONTROL MEASURES. ANY SUCH MITIGATION AND ANY FINES IMPOSED BY REGULATORY AGENCIES ASSOCIATED WITH SAID DISCHARGE SHALL BE THE CONTRACTOR'S RESPONSIBILITY WITHOUT ANY ADDITIONAL COST TO THE OWNER.
- ALL CLEARING AND GRUBBING AND EARTHWORK ACTIVITIES SHALL BE DONE IN A SEQUENTIAL MANNER AND KEPT A MINIMUM AS NECESSARY FOR ACTIVE GRADING AND CONSTRUCTION ACTIVITIES IN ORDER TO MINIMIZE THE EXPOSURE TIME.
- AS MUCH AS POSSIBLE, AVOID GRADING ACTIVITIES DURING PERIODS OF HIGHLY EROSION RAINFALL.
- ALL EROSION AND SEDIMENT CONTROL MEASURES SHALL BE IN PLACE AND FUNCTIONAL BEFORE EARTH DISTURBANCE ACTIVITIES ASSOCIATED WITH SAID MEASURES BEGIN.
- EROSION AND SEDIMENT CONTROL MEASURES MUST BE PROPERLY INSTALLED, MAINTAINED, ADJUSTED AND RELOCATED AS NECESSARY THROUGHOUT CONSTRUCTION TO ADDRESS CHANGING SITE CONDITIONS.
- STABILIZE ANY DISTURBED AREAS WHERE CONSTRUCTION IS COMPLETE OR NO CONSTRUCTION ACTIVITY WILL BE ON GOING FOR MORE THAN FOURTEEN (14) DAYS.
- CHECK ALL EROSION AND SEDIMENT CONTROL MEASURES WEEKLY AND AFTER EACH RAINFALL AS WELL AS PRIOR TO ANTICIPATED RAINFALL EVENTS. DAILY INSPECTION IS REQUIRED DURING PROLONGED RAINFALL EVENTS.
- PLACE TRENCH EXCAVATION MATERIAL ON UP SLOPE SIDE OF THE TRENCH EXCAVATION SUCH THAT ANY EROSION IS NOT WASHED INTO THE TRENCH.
- DO NOT DESTROY, REMOVE OR DISTURB VEGETATIVE COVER MORE THAN FOURTEEN (14) DAYS PRIOR TO GRADING.
- AS SOON AS POSSIBLE AFTER FINAL GRADING AND CONSTRUCTION, APPLY PERMANENT SOIL STABILIZATION WITH PERENNIAL VEGETATION.
- USE A STABILIZED PAD OF CLEAN, PROPERLY SIZED ROCK FOR CONSTRUCTION ACCESS AS INDICATED ON THE PLANS AND IN ACCORDANCE WITH THE CURRENT EDITION OF THE TENNESSEE EROSION AND SEDIMENT CONTROL HANDBOOK.
- MAINTENANCE AND OPERATION OF ALL EROSION PROTECTION AND SEDIMENT CONTROL MEASURES SHALL BE INCLUDED IN THE COST FOR SAID MEASURES, AND SHALL BE CONSIDERED INCIDENTAL TO EPC. THIS WILL INCLUDE THE REMOVAL AND PROPER DISPOSAL OF ACCUMULATED SEDIMENT AT ANY TIME IT REACHES THE MAXIMUM ALLOWABLE HEIGHT AS PER THE PLANS AND/OR STORM WATER POLLUTION PREVENTION PLAN ON FILE WITH TDEC, AS WELL ONCE THE ACTUAL MEASURES ARE NO LONGER REQUIRED AND READY TO BE REMOVED. REMOVAL OF THE ACTUAL SAID MEASURES, SUCH AS REMOVAL OF SILT FENCE AND INLET BARRIERS SHALL BE INCIDENTAL AS WELL.
- ACCEPTABLE TURF REINFORCEMENT MATS INCLUDE Vmax P550 BY North American Green (www.nagreen.com), P-300 BY SUNSHINE SUPPLIES, INC. (www.sunshinesupplies.com) AND Futerra 7020 BY PROFILE PRODUCTS LLC (www.profileproducts.com). INSTALL PER MANUFACTURER'S RECOMMENDATIONS. TURF REINFORCEMENT MATS ARE INCLUDED IN BASE BID ONLY.

EROSION CONTROL NOTES
NOT TO SCALE



SILT FENCE / SEDIMENT BARRIER
NOT TO SCALE



- NOTES:**
- ACCEPTABLE MANUFACTURERS AND PRODUCTS:
 - INVISIBLE STRUCTURES (www.invisiblestructures.com): GRAVELPAVE2 INVISIMARKER DELINEATORS
 - TRUEGRID (www.truegridpaver.com): TRUEGRID PRO PLUS SUPERSPOT DELINEATORS
 - PRESTO GEOSYSTEMS (www.prestogeo.com): GEOPAVE SNAP DELINEATORS
 - INSTALL PAVER SYSTEM ACCORDING TO MANUFACTURER'S RECOMMENDATION, UTILIZING DEPTH OF BASE MATERIALS SHOWN IN THE DETAIL.
 - COLORS TO BE SELECTED BY OWNER, FROM STANDARD AVAILABLE SELECTIONS.
 - DELINEATORS SHALL BE INSTALLED ALONG PAVEMENT PARKING SHOWN ON THE PLAN. INSTALL MARKERS PER MANUFACTURER'S RECOMMENDED SPACING.
 - PROVIDE ASPHALT ACCESS DRIVE TO CONNECT PROPOSED PARKING AREA TO CANADA ROAD.

ALTERNATE #1 TO BASE BID: REINFORCED GRAVEL PAVEMENT
NOT TO SCALE

FISHER ARNOLD
ENGINEERS ARCHITECTS CONSULTANTS PLANNERS

9180 Crestwyn Hills Drive | Memphis, Tennessee 38125-8538
901.748.1811 | Fax: 901.748.3115 | www.fisherarnold.com

INTERNATIONAL HARVESTER PARK
CITY OF LAKELAND
LAKELAND, TN

Rev.	Date	Description

Issue Date: 2/9/2023
F&A Project No: LAKELAND02PL
Drafted By: IRR
Checked By: DBB
Sheet Title: EASEMENT PARKING

Sheet No. 1 OF 1

Copyright 2023 Fisher & Arnold, Inc., all rights reserved
Filename: Z:\LAKELAND\0202PL\Planning\Plans\Gas ermt lot_Initial phase_01_26_2023.dwg
Plotted: Thursday, February 09, 2023 11:03 am
By: iritch