



**Request for Statements of Qualifications:  
SOQ #16-549/STP-7304(607) -Wentzville Parkway Turnlane Phase II  
SOQ #16-550: West Meyer Road Phase III**

**ADDENDUM 1**

Addendum issued November 9, 2016

The following correction/clarification is hereby incorporated into the Request for Statements of Qualifications:

Title Page: correct the STP number to 7304(607).

Do both projects require DBE Goals of 18%? **City Response:** The 18% DBE goal is for the Wentzville Parkway Turnlane Phase II SOQ. However, it is the City's intent to apply for federal funding for the West Meyer Road Phase III Project as well.

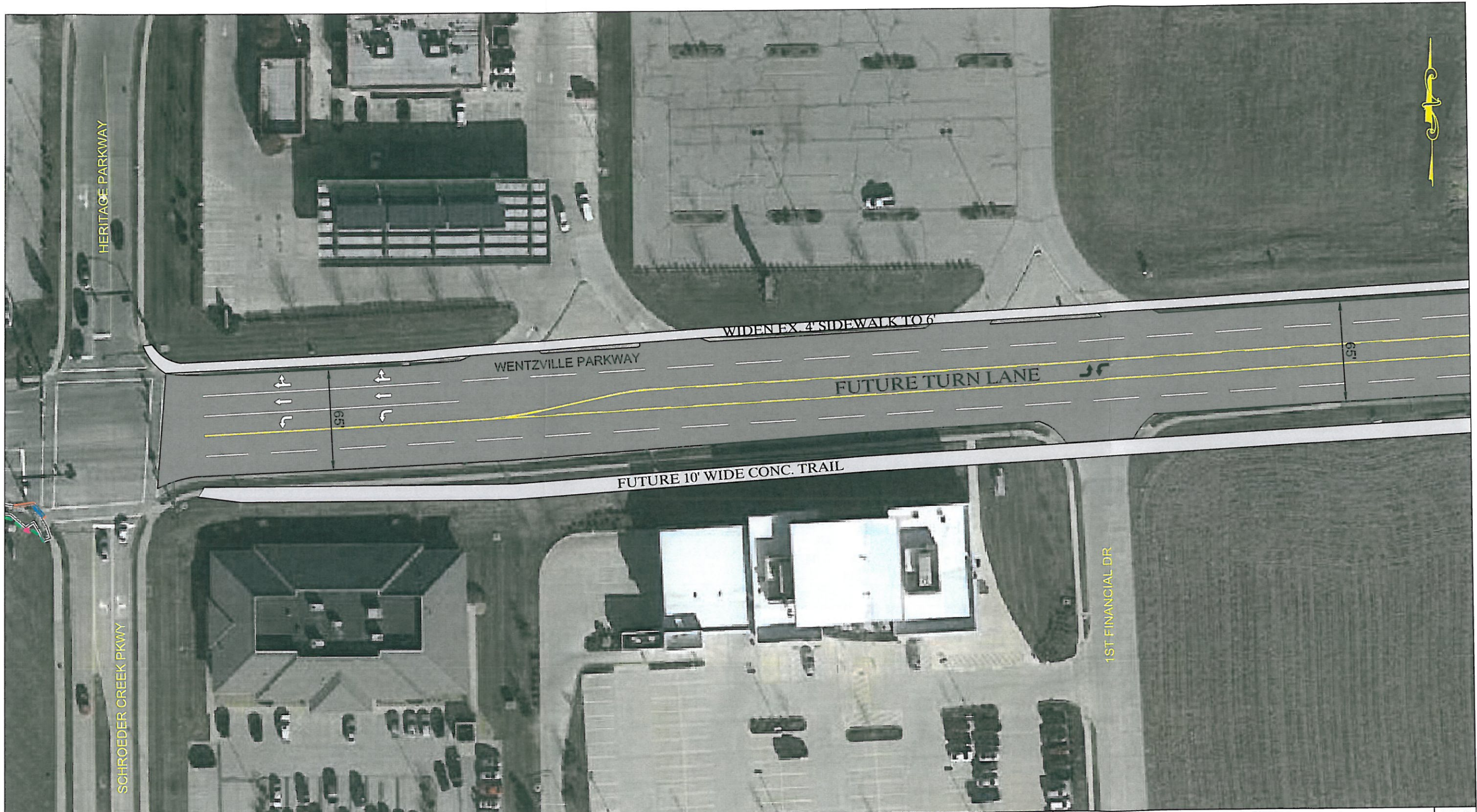
Have there been any studies or STP applications completed for either project? If so, may we have a copy of the study or application? **City Response:** These projects have not been through a formal study, but they both have St. Charles County Road Board Funding, additionally the Wentzville Parkway Turnlane Phase II Project has Federal STP funding. Application packets for each funding source have been attached for review.

What are the project limits for the West Meyer Road Phase III project? Is there a map which shows the project limits? **City Response:** The West Meyer Road Phase III Project is from the existing West Meyer Road and Point Prairie Road intersection west to the existing bridge over an unnamed tributary to McCoy Creek. Concept plans for each project are attached.

This addendum forms a part of and modifies the original solicitation document dated November 3, 2016. All other Terms and Conditions as applicable to this Request for Statements of Qualifications shall remain as stated.

*End of Addendum 1*





NO.	DATE	BY	REVISION

**UTILITY NOTES**  
 MODOT UNDERGROUND FACILITIES ARE NOT ON THE ONE CALL SYSTEM CALL 1-800-340-4100 FOR LOCATES  
 UNDERGROUND FACILITY STRUCTURES AND UTILITIES HAVE BEEN PLOTTED FROM AVAILABLE SURVEYS AND RECORD INFORMATION AND, THEREFORE, THEIR LOCATIONS MUST BE CONSIDERED APPROXIMATE ONLY. VERIFICATION OF LOCATION OF ALL UNDERGROUND STRUCTURES AND FACILITIES EITHER SHOWN OR NOT SHOWN ON THESE PLANS, SHALL BE THE RESPONSIBILITY OF THE CONTRACTOR.



**CITY OF WENTZVILLE**  
 PUBLIC WORKS DEPARTMENT  
 200 E. FOURTH STREET  
 WENTZVILLE, MISSOURI 63385  
 PH. 636-639-2049  
 FAX. 636-639-2057

DESIGNED BY:  
 DRAWN BY: CJS  
 CHECKED BY:  
 APPROVED BY:

SCALE: 1"=60'  
 DATE: 12/03/14  
 PROJECT NO.:

CITY OF WENTZVILLE  
 2015 WENTZVILLE PKWY IMPROVEMENTS  
 SCHROEDER CREEK BLVD TO MEYER RD TURN LANE ADDITION CONCEPT

SHEET NUMBER	TOTAL SHEETS
1	3





NO.	DATE	BY	REVISION

**UTILITY NOTES**

MODOT UNDERGROUND FACILITIES ARE NOT ON THE ONE CALL SYSTEM  
CALL 1-800-340-4100 FOR LOCATES

UNDERGROUND FACILITY STRUCTURES AND UTILITIES HAVE BEEN PLOTTED FROM AVAILABLE SURVEYS AND RECORD INFORMATION AND, THEREFORE, THEIR LOCATIONS MUST BE CONSIDERED APPROXIMATE ONLY. VERIFICATION OF LOCATION OF ALL UNDERGROUND STRUCTURES AND FACILITIES EITHER SHOWN OR NOT SHOWN ON THESE PLANS, SHALL BE THE RESPONSIBILITY OF THE CONTRACTOR.



**CITY OF WENTZVILLE**  
PUBLIC WORKS DEPARTMENT  
200 E. FOURTH STREET  
WENTZVILLE, MISSOURI 63385  
PH. 636-639-2049  
FAX. 636-639-2057

DESIGNED BY:  
DRAWN BY: CJS  
CHECKED BY:  
APPROVED BY:

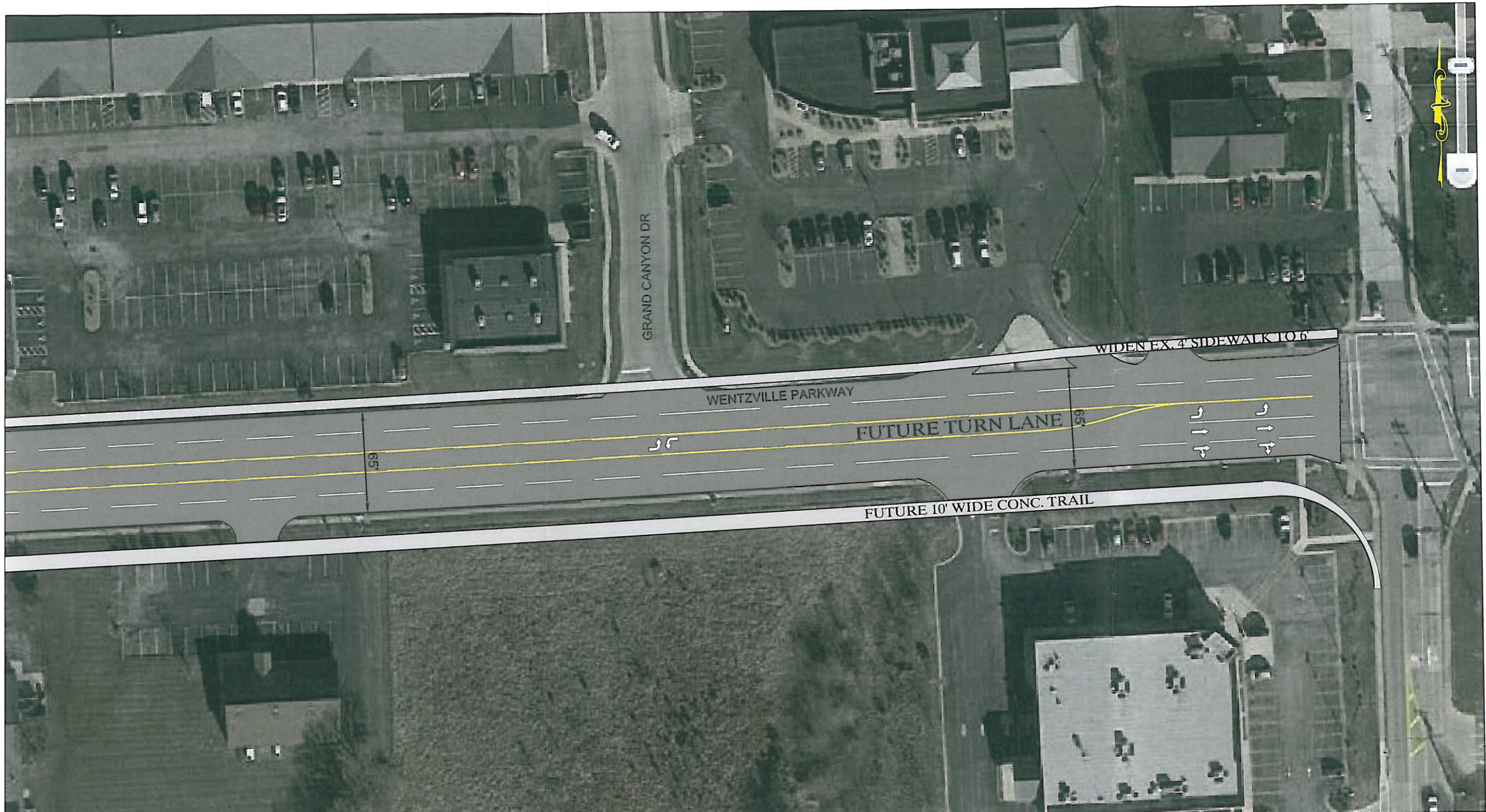
SCALE: 1"=60'  
DATE: 12/03/14  
PROJECT NO.:

CITY OF WENTZVILLE  
2015 WENTZVILLE PKWY IMPROVEMENTS

SCHROEDER CREEK BLVD TO MEYER RD TURN LANE ADDITION CONCEPT

SHEET NUMBER	TOTAL SHEETS
2	3





NO.	DATE	BY	REVISION

**UTILITY NOTES**

MODOT UNDERGROUND FACILITIES ARE NOT ON THE ONE CALL SYSTEM  
CALL 1-800-340-4100 FOR LOCATES

UNDERGROUND FACILITY STRUCTURES AND UTILITIES HAVE BEEN PLOTTED FROM AVAILABLE SURVEYS AND RECORD INFORMATION AND, THEREFORE, THEIR LOCATIONS MUST BE CONSIDERED APPROXIMATE ONLY. VERIFICATION OF LOCATION OF ALL UNDERGROUND STRUCTURES AND FACILITIES EITHER SHOWN OR NOT SHOWN ON THESE PLANS, SHALL BE THE RESPONSIBILITY OF THE CONTRACTOR.



**CITY OF WENTZVILLE**  
PUBLIC WORKS DEPARTMENT  
200 E. FOURTH STREET  
WENTZVILLE, MISSOURI 63385  
PH. 636-639-2049  
FAX. 636-639-2057

DESIGNED BY:  
DRAWN BY: CJS  
CHECKED BY:  
APPROVED BY:

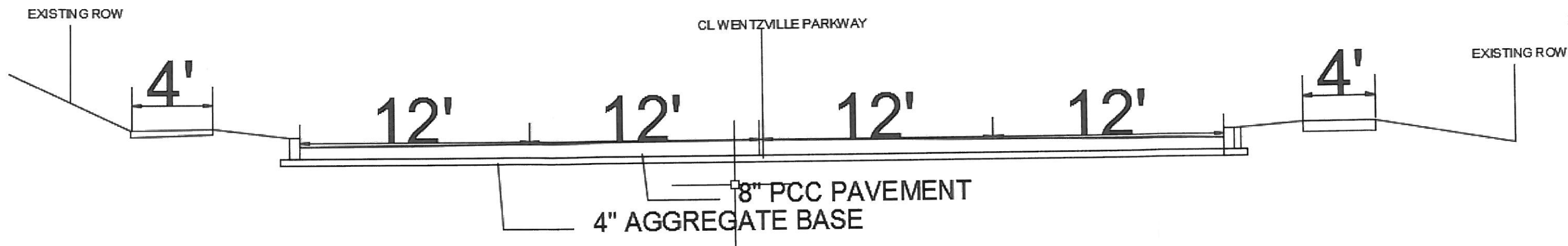
SCALE: 1"=60'  
DATE: 12/03/14  
PROJECT NO.:

CITY OF WENTZVILLE  
2015 WENTZVILLE PKWY IMPROVEMENTS  
SCHROEDER CREEK BLVD TO MEYER RD TURN LANE ADDITION CONCEPT

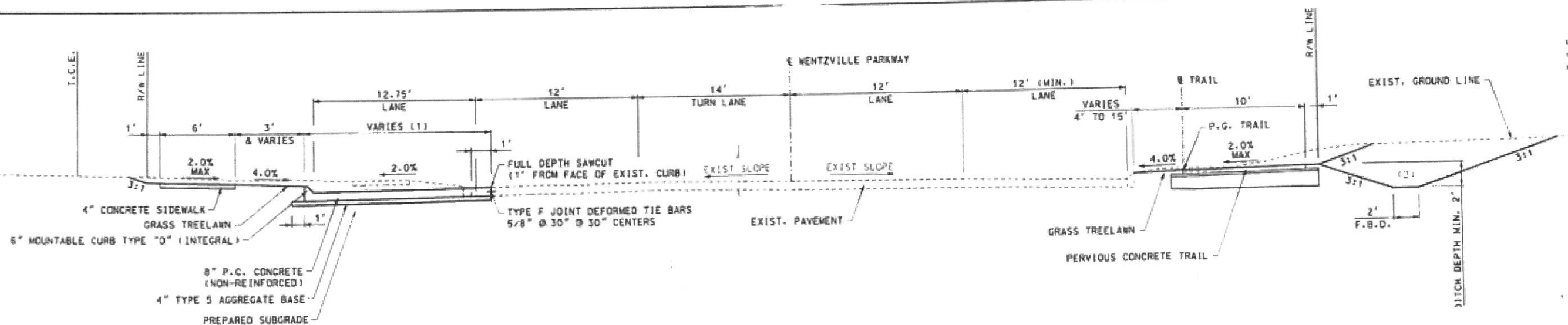
SHEET NUMBER	TOTAL SHEETS
3	3



## EXISTING WENTZVILLE PARKWAY TYPICAL CROSS SECTION



## PROPOSED PROFILE WENTZVILLE PARKWAY \*DESIGN MAY CHANGE DEPENDING ON CONSTRAINTS



NO.	DATE	BY

**UTILITY NOTES**

MODOT UNDERGROUND FACILITIES ARE NOT ON THE ONE CALL SYSTEM. CALL 1-800-360-4100 FOR LOCATES.

UNDERGROUND FACILITY STRUCTURES AND UTILITIES HAVE BEEN PLOTTED FROM AVAILABLE SURVEYS AND RECORD INFORMATION AND, THEREFORE, THEIR LOCATIONS MUST BE CONSIDERED APPROXIMATE ONLY. VERIFICATION OF LOCATION OF ALL UNDERGROUND STRUCTURES AND FACILITIES EITHER SHOWN OR NOT SHOWN ON THESE PLANS, SHALL BE THE RESPONSIBILITY OF THE CONTRACTOR.



**CITY OF WENTZVILLE**

PUBLIC WORKS DEPARTMENT  
200 E. FOURTH STREET  
WENTZVILLE, MISSOURI 63385  
PH. 638-839-2049  
FAX. 638-839-2057

DESIGNED BY: \_\_\_\_\_

DRAWN BY: CJS

CHECKED BY: \_\_\_\_\_

APPROVED BY: \_\_\_\_\_

SCALE: 1"=60'

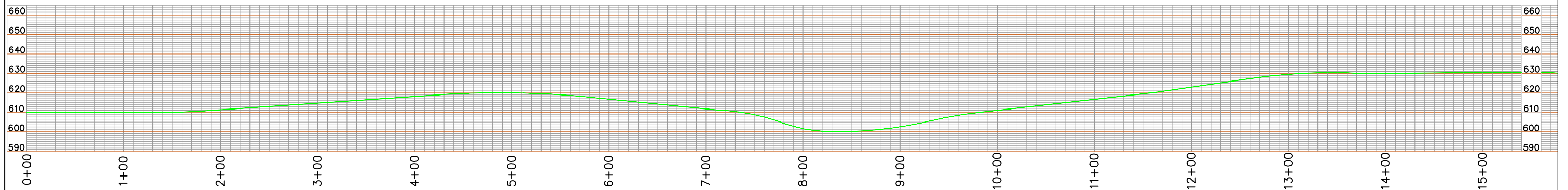
DATE: 12/03/14

PROJECT NO. \_\_\_\_\_

CITY OF WENTZVILLE  
WENTZVILLE PARKWAY TURNLANE

SCHROEDER CREEK TO MEYER RD  
TYPICAL AND PROPOSED PROFILE

SHEET NUMBER
4
TOTAL SHEETS
4




NO.	DATE	BY	REVISION

**UTILITY NOTES**

MODOT UNDERGROUND FACILITIES ARE NOT ON THE ONE CALL SYSTEM CALL 1-800-340-4100 FOR LOCATES

UNDERGROUND FACILITY STRUCTURES AND UTILITIES HAVE BEEN PLOTTED FROM AVAILABLE SURVEYS AND RECORD INFORMATION AND, THEREFORE, THEIR LOCATIONS MUST BE CONSIDERED APPROXIMATE ONLY. VERIFICATION OF LOCATION OF ALL UNDERGROUND STRUCTURES AND FACILITIES EITHER SHOWN OR NOT SHOWN ON THESE PLANS, SHALL BE THE RESPONSIBILITY OF THE CONTRACTOR.



**CITY OF WENTZVILLE**  
 PUBLIC WORKS DEPARTMENT  
 200 E. FOURTH STREET  
 WENTZVILLE, MISSOURI 63385  
 PH. 636-639-2049  
 FAX. 636-639-2057

DESIGNED BY:  
 DRAWN BY: CJS  
 CHECKED BY:  
 APPROVED BY:

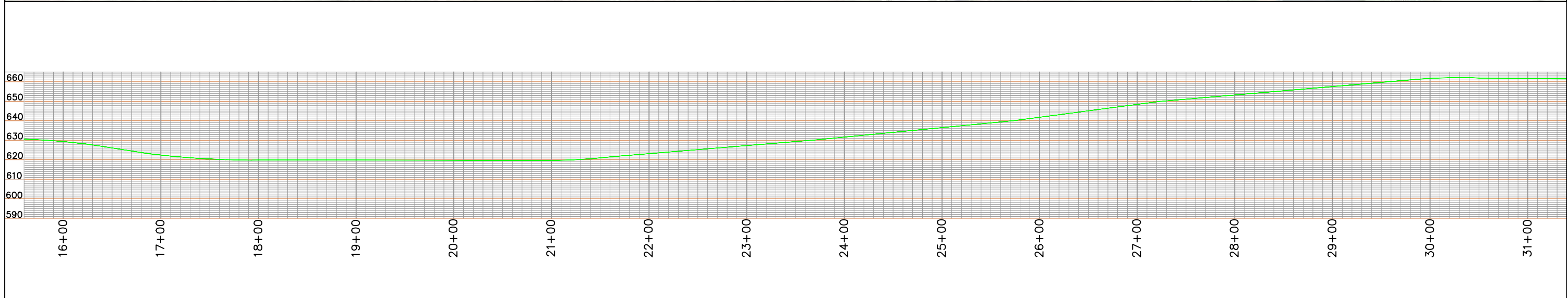
SCALE: 1"=100'  
 DATE: 9/12/16  
 PROJECT NO.:

CITY OF WENTZVILLE  
 ROADWAY EXTENSION PROJECT

WEST MEYER ROAD WIDENING CONCEPT  
 PLAN & PROFILE SHEET 1

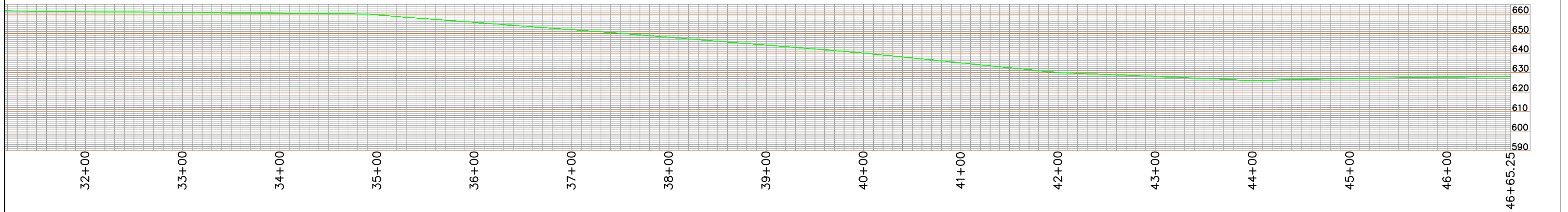
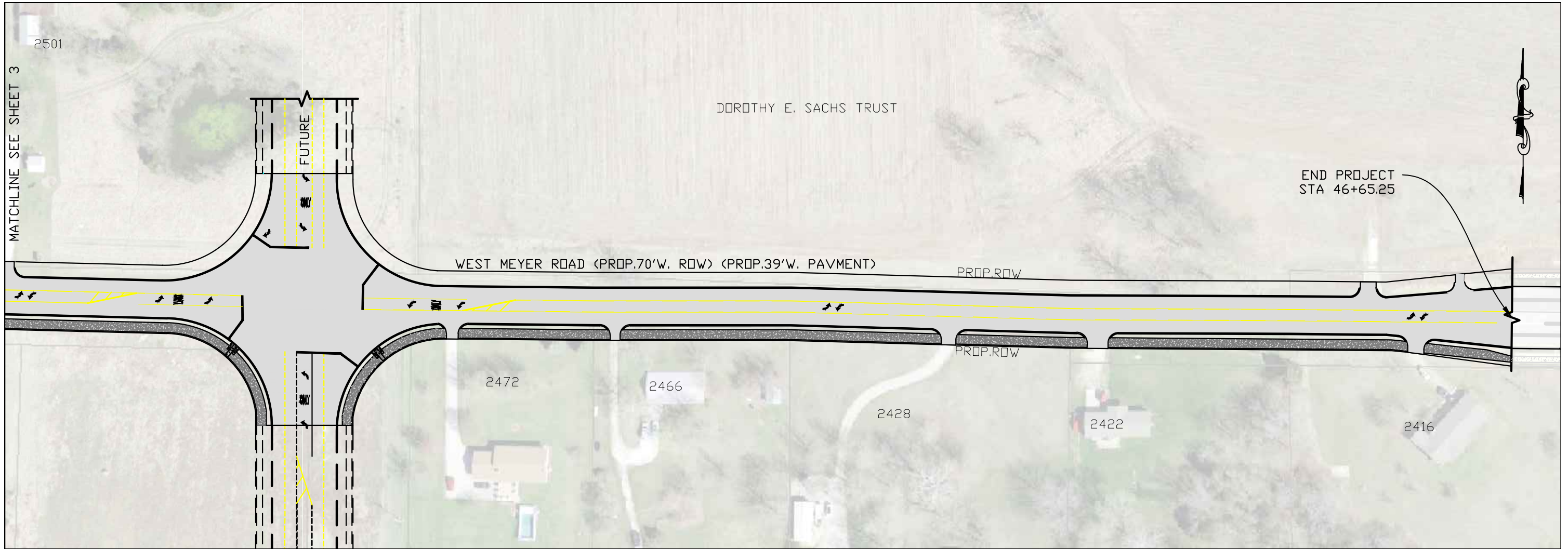
SHEET NUMBER  
 2

TOTAL SHEETS  
 5



				<p><b>UTILITY NOTES</b></p> <p>MODOT UNDERGROUND FACILITIES ARE NOT ON THE ONE CALL SYSTEM CALL 1-800-340-4100 FOR LOCATES</p> <p>UNDERGROUND FACILITY STRUCTURES AND UTILITIES HAVE BEEN PLOTTED FROM AVAILABLE SURVEYS AND RECORD INFORMATION AND, THEREFORE, THEIR LOCATIONS MUST BE CONSIDERED APPROXIMATE ONLY. VERIFICATION OF LOCATION OF ALL UNDERGROUND STRUCTURES AND FACILITIES EITHER SHOWN OR NOT SHOWN ON THESE PLANS, SHALL BE THE RESPONSIBILITY OF THE CONTRACTOR.</p>		<p><b>Call BEFORE you DIG</b> TOLL FREE 1-800-344-7483 MISSOURI ONE-CALL SYSTEM, INC.</p>		<p><b>CITY OF WENTZVILLE</b> PUBLIC WORKS DEPARTMENT 200 E. FOURTH STREET WENTZVILLE, MISSOURI 63385 PH. 636-639-2049 FAX. 636-639-2057</p>		<p>DESIGNED BY:</p>	<p>SCALE: 1" = 100'</p>	<p><b>CITY OF WENTZVILLE</b> ROADWAY EXTENSION PROJECT</p>		<p>SHEET NUMBER 3</p>
								<p>DRAWN BY: CJS</p>	<p>DATE: 09/12/16</p>	<p>WEST MEYER ROAD WIDENING CONCEPT PLAN &amp; PROFILE SHEET 2</p>				<p>TOTAL SHEETS 5</p>
								<p>CHECKED BY:</p>	<p>PROJECT NO.</p>					
								<p>APPROVED BY:</p>						
NO.	DATE	BY	REVISION											






NO.	DATE	BY	REVISION

**UTILITY NOTES**

MODOT UNDERGROUND FACILITIES ARE NOT ON THE ONE CALL SYSTEM CALL 1-800-340-4100 FOR LOCATES

UNDERGROUND FACILITY STRUCTURES AND UTILITIES HAVE BEEN PLOTTED FROM AVAILABLE SURVEYS AND RECORD INFORMATION AND, THEREFORE, THEIR LOCATIONS MUST BE CONSIDERED APPROXIMATE ONLY. VERIFICATION OF LOCATION OF ALL UNDERGROUND STRUCTURES AND FACILITIES EITHER SHOWN OR NOT SHOWN ON THESE PLANS, SHALL BE THE RESPONSIBILITY OF THE CONTRACTOR.



Call BEFORE you DIG  
TOLL FREE  
1-800-344-7483  
MISSOURI ONE-CALL SYSTEM, INC.

**CITY OF WENTZVILLE**  
PUBLIC WORKS DEPARTMENT  
200 E. FOURTH STREET  
WENTZVILLE, MISSOURI 63385  
PH. 636-639-2049  
FAX. 636-639-2057

DESIGNED BY:  
DRAWN BY:  
CHECKED BY:  
APPROVED BY:

CJS

SCALE:  
1" = 100'

DATE:  
09/12/16

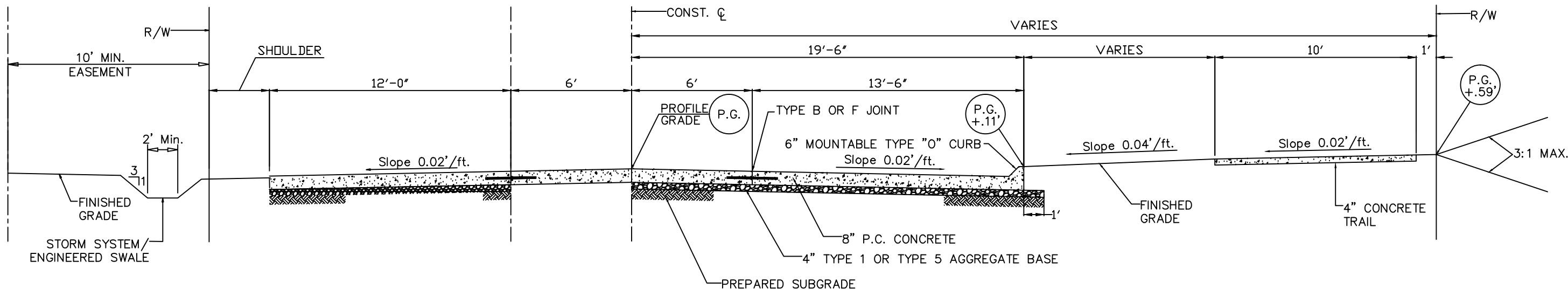
PROJECT NO.

CITY OF WENTZVILLE  
ROADWAY EXTENSION PROJECT

WEST MEYER ROAD WIDENING CONCEPT  
PLAN & PROFILE SHEET 3

SHEET NUMBER	4
TOTAL SHEETS	5






STANDARD TYPICAL SECTION  
NTS

NO.	DATE	BY	REVISION

**UTILITY NOTES**

MDOT UNDERGROUND FACILITIES ARE NOT ON THE ONE CALL SYSTEM CALL 1-800-340-4100 FOR LOCATES

UNDERGROUND FACILITY STRUCTURES AND UTILITIES HAVE BEEN PLOTTED FROM AVAILABLE SURVEYS AND RECORD INFORMATION AND, THEREFORE, THEIR LOCATIONS MUST BE CONSIDERED APPROXIMATE ONLY. VERIFICATION OF LOCATION OF ALL UNDERGROUND STRUCTURES AND FACILITIES EITHER SHOWN OR NOT SHOWN ON THESE PLANS, SHALL BE THE RESPONSIBILITY OF THE CONTRACTOR.



**CITY OF WENTZVILLE**  
PUBLIC WORKS DEPARTMENT  
200 E. FOURTH STREET  
WENTZVILLE, MISSOURI 63385  
PH. 636-639-2049  
FAX. 636-639-2057

DESIGNED BY:  
DRAWN BY: CJS  
CHECKED BY:  
APPROVED BY:

SCALE:  
NTS  
DATE: 09/12/16  
PROJECT NO.:

CITY OF WENTZVILLE  
ROADWAY EXTENSION PROJECT

WEST MEYER ROAD WIDENING CONCEPT  
TYPICAL SECTION

SHEET NUMBER	5
TOTAL SHEETS	5