

**ADDENDUM TWO
CITYWIDE ROW CONCRETE CONTRACT
CONTRACT NO. T-16-003-201
CITY OF CHATTANOOGA, TENNESSEE**

The following changes shall be made to the Contract Documents, Specifications, and Drawings:

I. Additional Details:

- Concrete Steps Detail
- Typical Step Detail
- Typical Handrail Detail
- Wall Detail

II. Clarification:

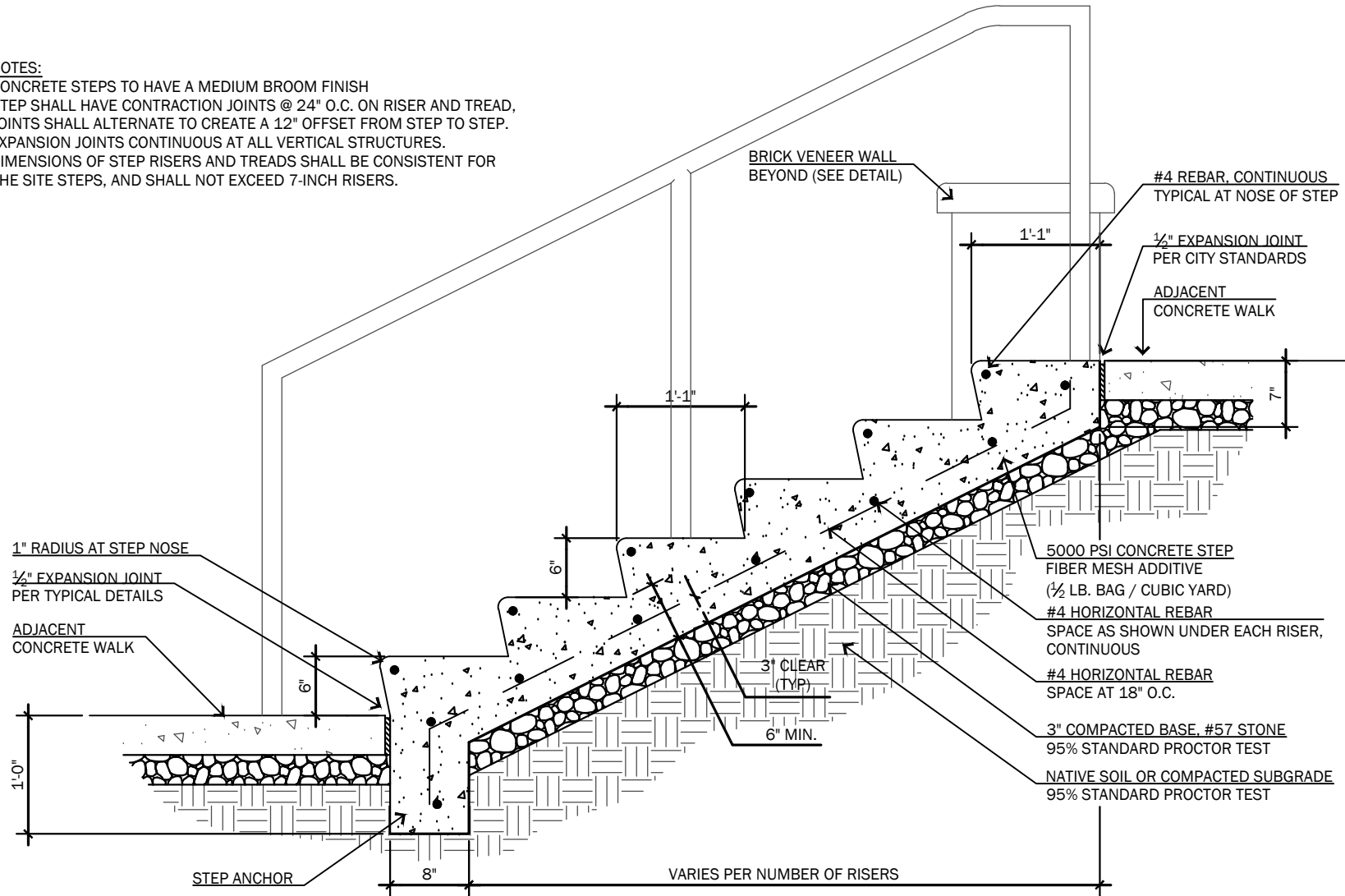
- Bid Item 3300-A Pervious Concrete Tree Well Surface (SD-509.01) should be Integral Brick Red color per note 3 on SD-509.01.

07/08/2016

/s/ Blythe Bailey, Administrator
City of Chattanooga
Department of Transportation

NOTES:

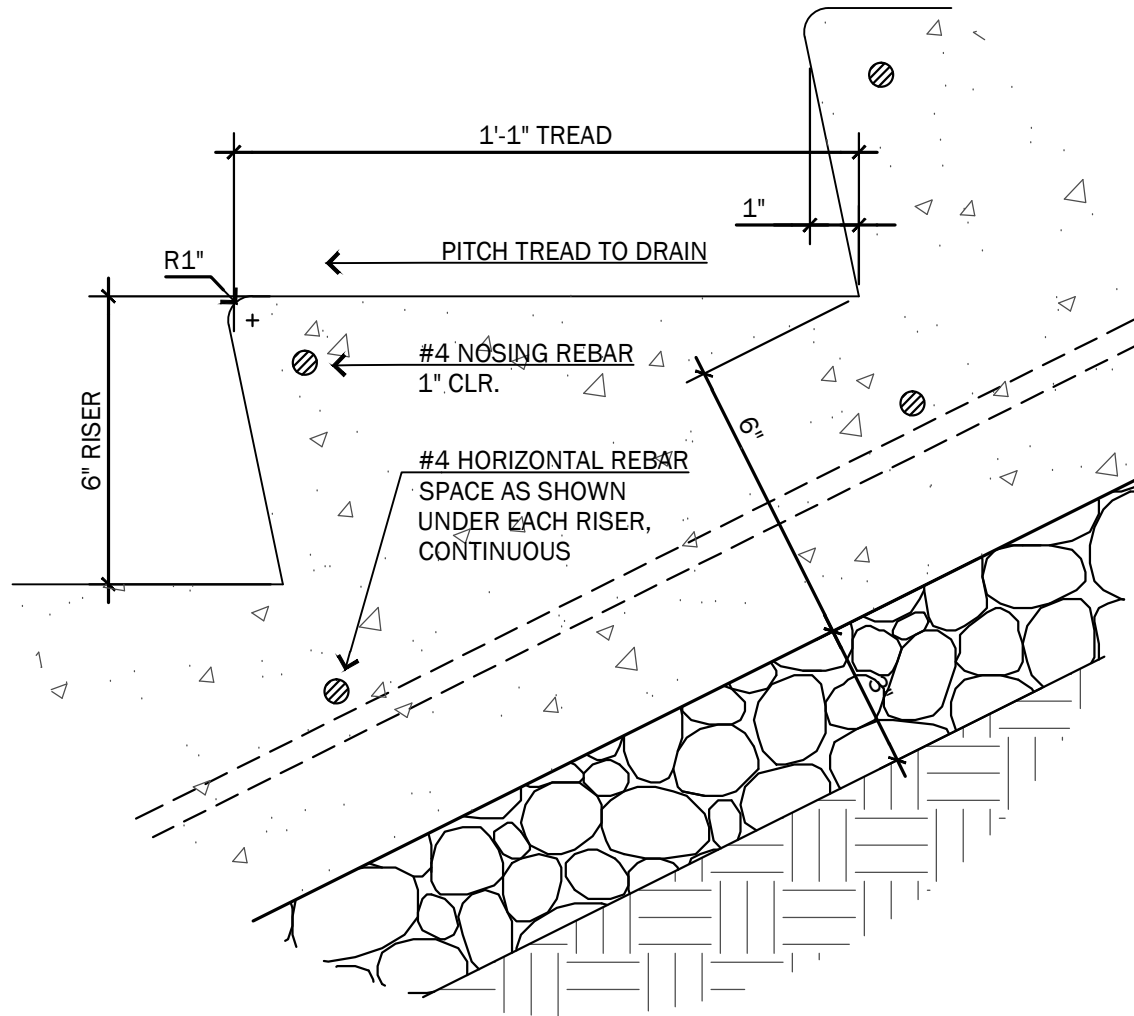
1. CONCRETE STEPS TO HAVE A MEDIUM BROOM FINISH
2. STEP SHALL HAVE CONTRACTION JOINTS @ 24" O.C. ON RISER AND TREAD, JOINTS SHALL ALTERNATE TO CREATE A 12" OFFSET FROM STEP TO STEP.
3. EXPANSION JOINTS CONTINUOUS AT ALL VERTICAL STRUCTURES.
4. DIMENSIONS OF STEP RISERS AND TREADS SHALL BE CONSISTENT FOR THE SITE STEPS, AND SHALL NOT EXCEED 7-INCH RISERS.



CONCRETE STEPS

3/4" = 1'-0"

DETAIL SHOWN FOR BIDDING REFERENCE ONLY.
FINAL INSTALLATION DETAILS MAY VARY BUT WILL
BE SIMILAR TO INFORMATION ILLUSTRATED HEREIN.



TYPICAL STEP DETAIL

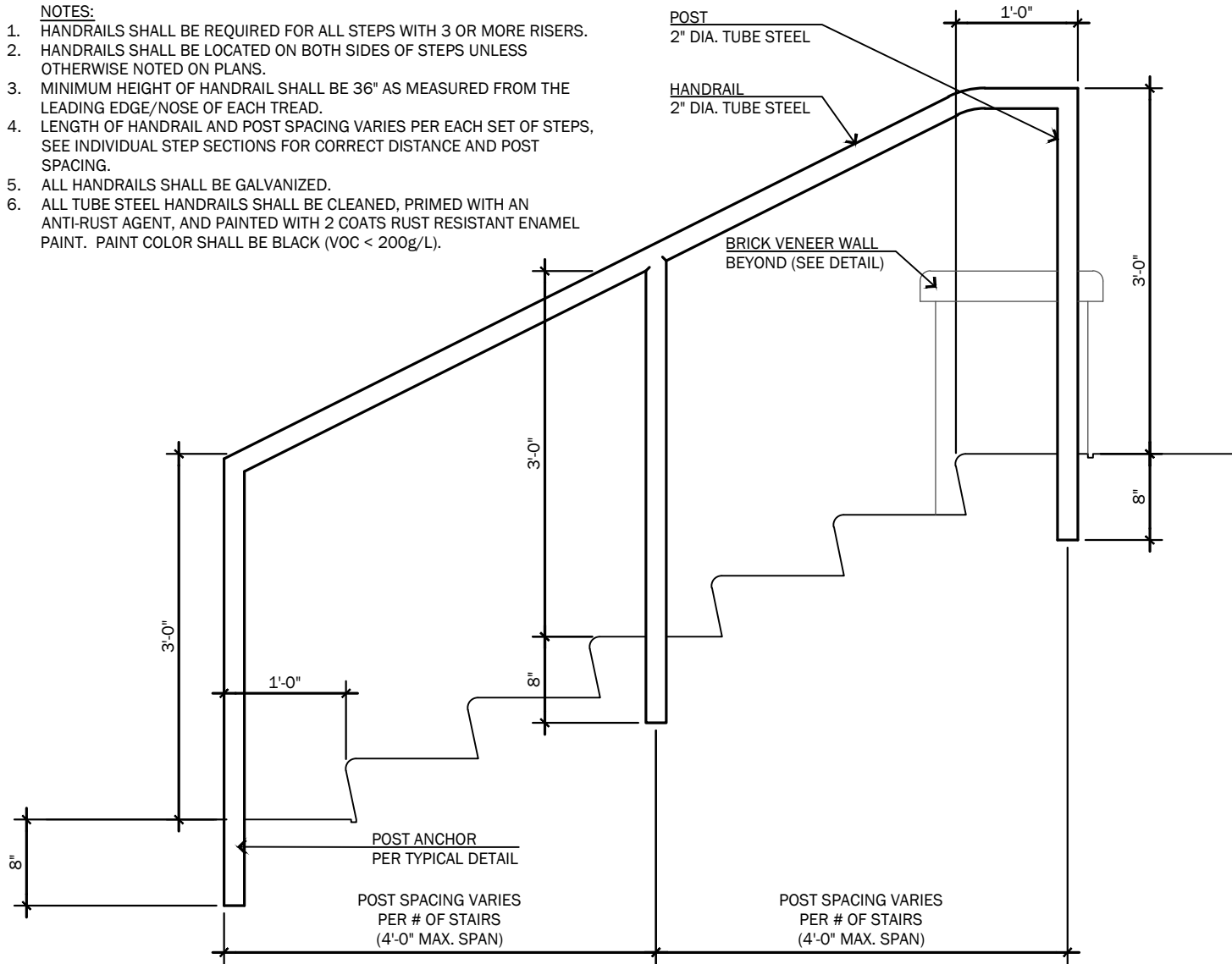
3" = 1'-0"

DETAIL SHOWN FOR BIDDING REFERENCE ONLY.
FINAL INSTALLATION DETAILS MAY VARY BUT WILL
BE SIMILAR TO INFORMATION ILLUSTRATED HEREIN.

NOTES:

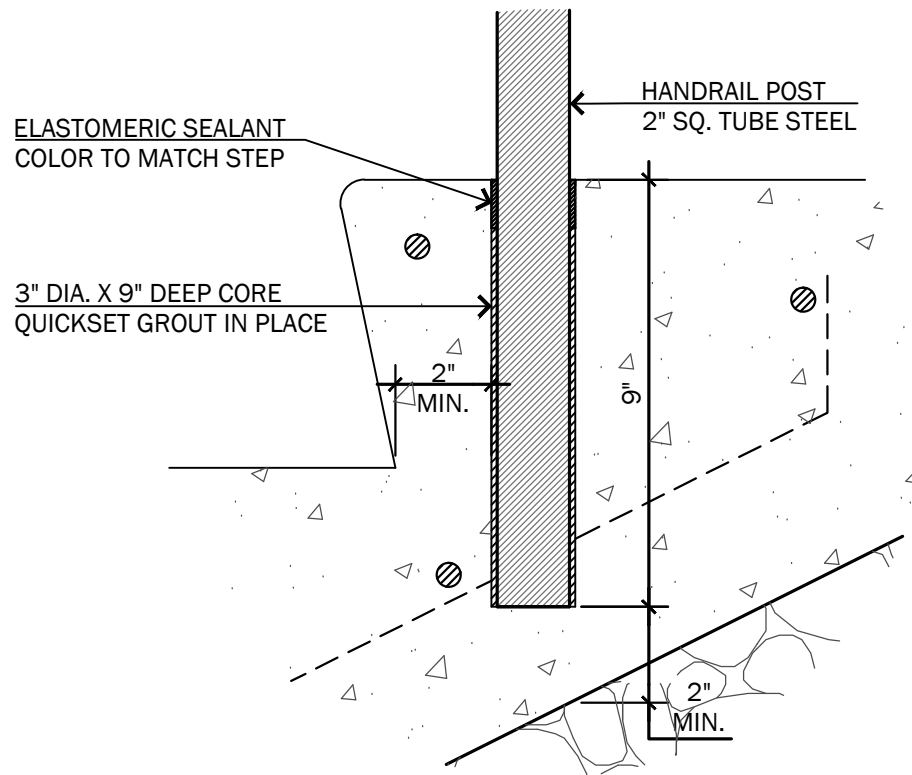
1. HANDRAILS SHALL BE REQUIRED FOR ALL STEPS WITH 3 OR MORE RISERS.
2. HANDRAILS SHALL BE LOCATED ON BOTH SIDES OF STEPS UNLESS OTHERWISE NOTED ON PLANS.
3. MINIMUM HEIGHT OF HANDRAIL SHALL BE 36" AS MEASURED FROM THE LEADING EDGE/NOSE OF EACH TREAD.
4. LENGTH OF HANDRAIL AND POST SPACING VARIES PER EACH SET OF STEPS, SEE INDIVIDUAL STEP SECTIONS FOR CORRECT DISTANCE AND POST SPACING.
5. ALL HANDRAILS SHALL BE GALVANIZED.
6. ALL TUBE STEEL HANDRAILS SHALL BE CLEANED, PRIMED WITH AN ANTI-RUST AGENT, AND PAINTED WITH 2 COATS RUST RESISTANT ENAMEL PAINT. PAINT COLOR SHALL BE BLACK (VOC < 200g/L).

1. HANDRAILS SHALL BE REQUIRED FOR ALL STEPS WITH 3 OR MORE RISERS.
2. HANDRAILS SHALL BE LOCATED ON BOTH SIDES OF STEPS UNLESS OTHERWISE NOTED ON PLANS.
3. MINIMUM HEIGHT OF HANDRAIL SHALL BE 36" AS MEASURED FROM THE LEADING EDGE/NOSE OF EACH TREAD.
4. LENGTH OF HANDRAIL AND POST SPACING VARIES PER EACH SET OF STEPS, SEE INDIVIDUAL STEP SECTIONS FOR CORRECT DISTANCE AND POST SPACING.
5. ALL HANDRAILS SHALL BE GALVANIZED.
6. ALL TUBE STEEL HANDRAILS SHALL BE CLEANED, PRIMED WITH AN ANTI-RUST AGENT, AND PAINTED WITH 2 COATS RUST RESISTANT ENAMEL PAINT. PAINT COLOR SHALL BE BLACK (VOC < 200g/L).



3/4" = 1'-0"

**DETAIL SHOWN FOR BIDDING REFERENCE ONLY.
FINAL INSTALLATION DETAILS MAY VARY BUT WILL
BE SIMILAR TO INFORMATION ILLUSTRATED HEREIN.**

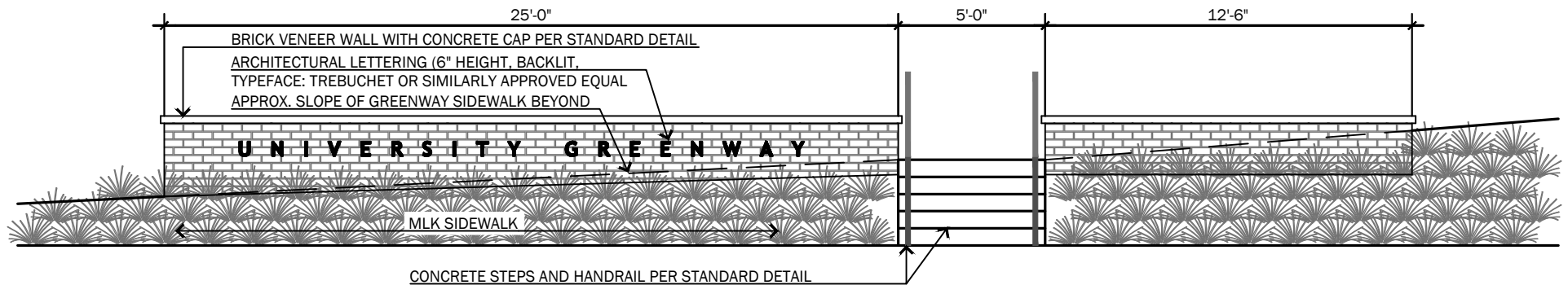


HANDRAIL MOUNTING DETAIL

3" = 1'-0"

DETAIL SHOWN FOR BIDDING REFERENCE ONLY.
FINAL INSTALLATION DETAILS MAY VARY BUT WILL
BE SIMILAR TO INFORMATION ILLUSTRATED HEREIN.

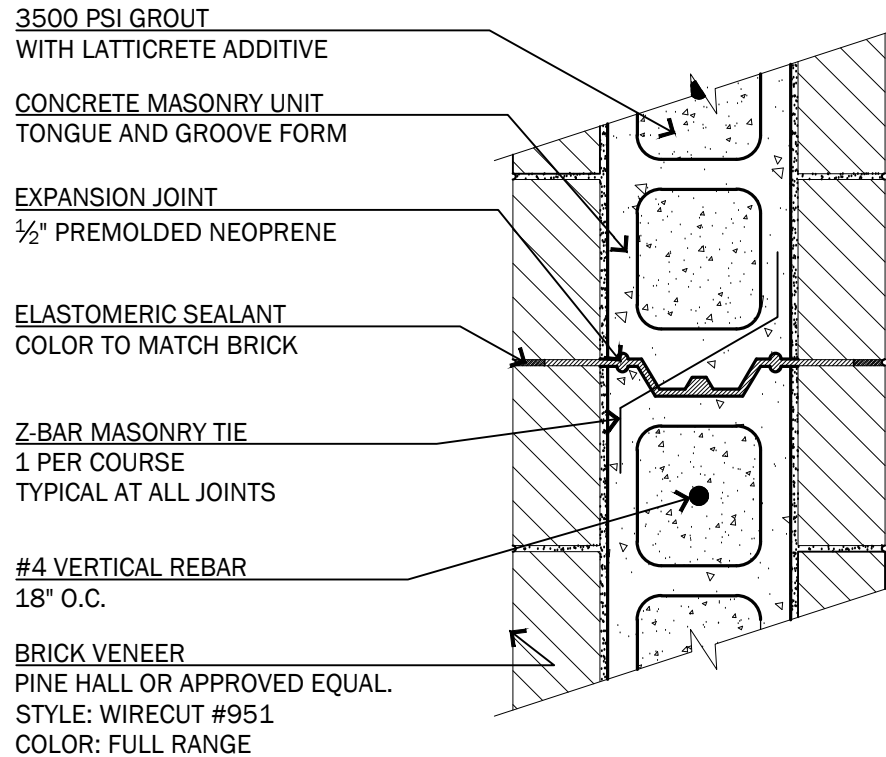
**DETAIL SHOWN FOR BIDDING REFERENCE ONLY.
FINAL INSTALLATION DETAILS MAY VARY BUT WILL
BE SIMILAR TO INFORMATION ILLUSTRATED HEREIN.**



WALL ELEVATION

3/16" = 1'-0"

DETAIL SHOWN FOR BIDDING REFERENCE ONLY.
FINAL INSTALLATION DETAILS MAY VARY BUT WILL
BE SIMILAR TO INFORMATION ILLUSTRATED HEREIN.



NOTES:

1. SPACE WALL EXPANSION JOINT EVENLY ALONG WALL AT 20' O.C.
PROVIDE MINIMUM OF 1 EXPANSION. EXPANSION JOINT NOT REQUIRED
IF WALL IS LESS THAN 20'.

TYPICAL WALL DETAILING

1-1/2" = 1'-0"

DETAIL SHOWN FOR BIDDING REFERENCE ONLY.
FINAL INSTALLATION DETAILS MAY VARY BUT WILL
BE SIMILAR TO INFORMATION ILLUSTRATED HEREIN.