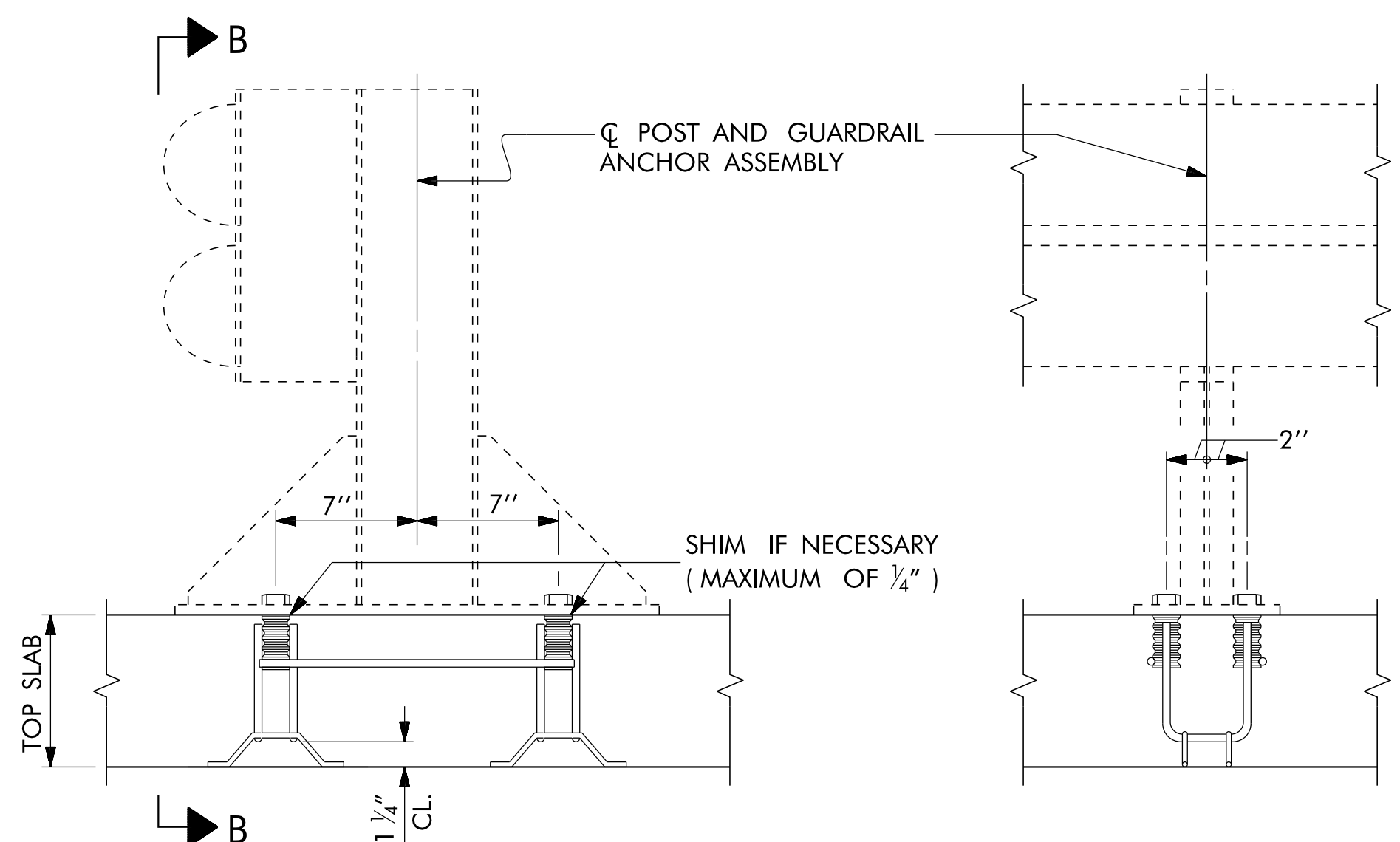


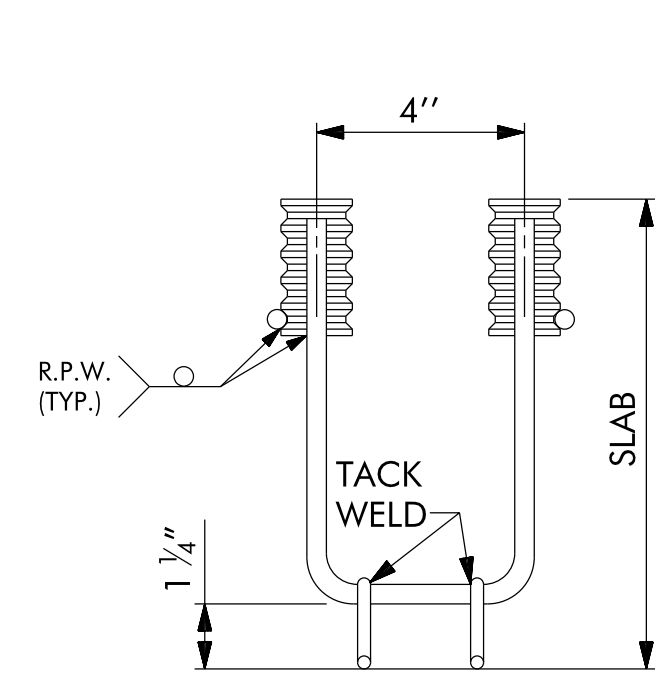
PLAN

NOTE: IN LIEU OF GUARDRAIL ANCHORAGE DETAILS SHOWN HERE, THE CONTRACTOR MAY INSTALL GUARDRAIL POSTS PER DETAILS GIVEN IN TDOT STANDARD DRAWING STD-17-7.

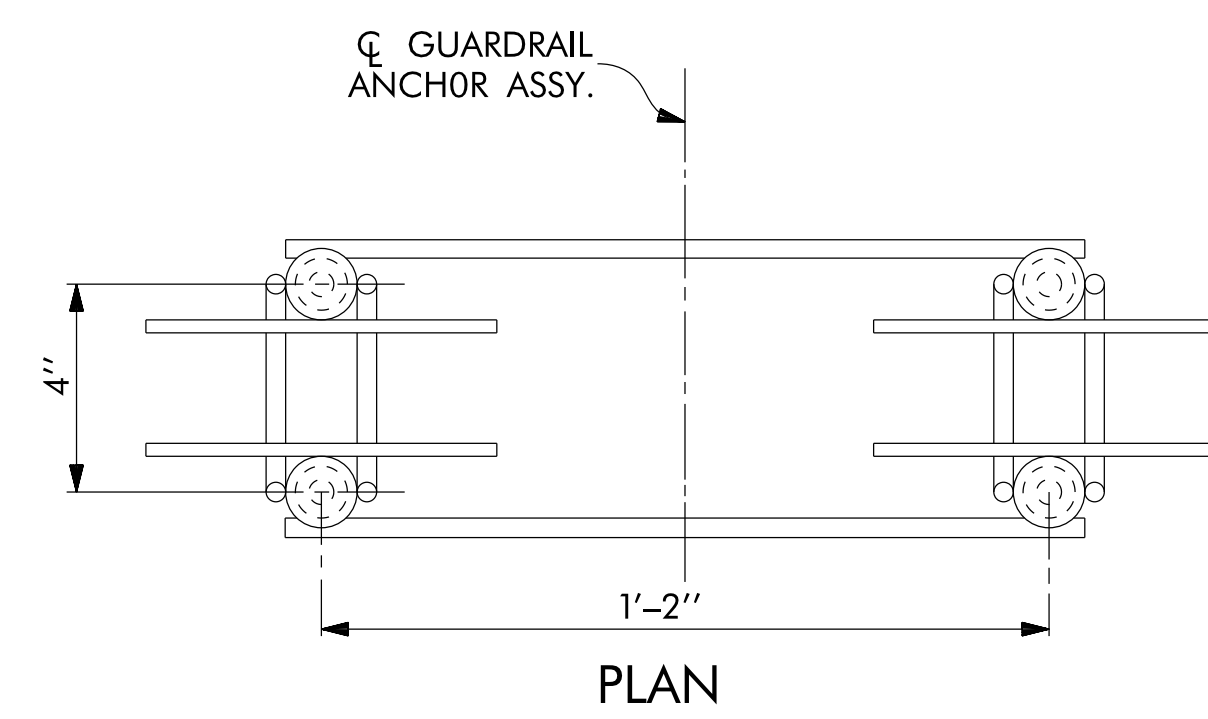


SECTION A-A

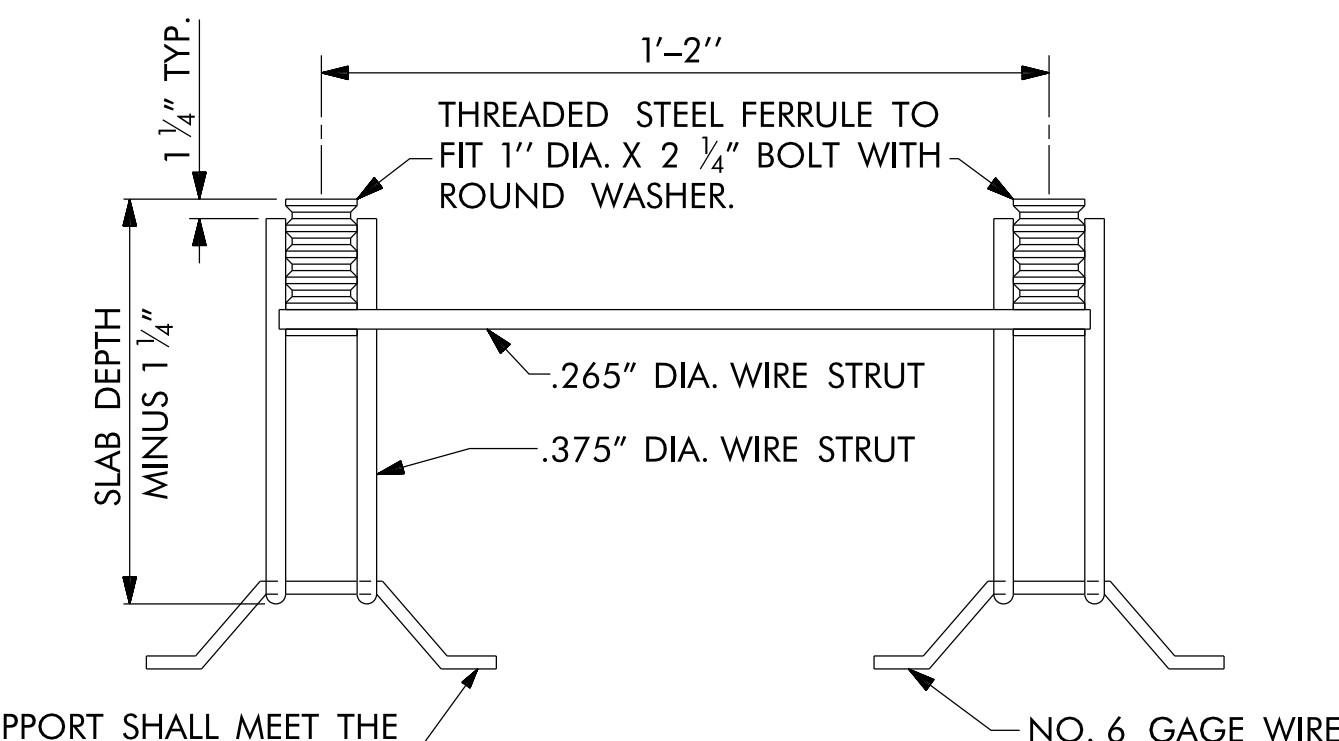
SECTION B-B



ELEVATION



PLAN



SIDE VIEW

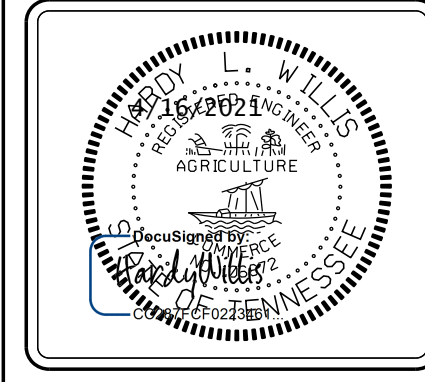
THIS SUPPORT SHALL MEET THE REQUIREMENTS AS SPECIFIED FOR SUPPORTS FOR REINFORCING STEEL. SEE SPECIFICATIONS.

GUARDRAIL ANCHOR ASSEMBLY FOR CULVERTS

NOTES

- GUARDRAIL ANCHOR ASSEMBLIES AND GUARDRAIL POSTS SHALL BE LOCATED IN ACCORDANCE WITH THE ROADWAY PLANS. NO GUARDRAIL POSTS SHALL BE CLOSER THAN 3' FROM THE EDGE OF THE CULVERT.
- THE GUARDRAIL ANCHOR ASSEMBLY FOR CULVERTS SHALL CONSIST OF THE FOLLOWING COMPONENTS :
- FERRULES SHALL BE MADE FROM STEEL MEETING THE REQUIREMENTS OF AASHTO M169, GRADE 12L14 AND SHALL HAVE A MINIMUM LENGTH OF THREADS OF 2 1/2".
 - 4 - 1" DIA. X 2 1/4" BOLTS WITH WASHERS, BOLTS SHALL CONFORM TO THE REQUIREMENTS OF ASTM A307. BOLTS AND WASHERS SHALL BE GALVANIZED. (AT THE CONTRACTOR'S OPTION, STAINLESS STEEL BOLTS AND WASHERS MAY BE USED AS AN ALTERNATE FOR THE 1" DIA. X 2 1/4" GALVANIZED BOLTS AND WASHERS. THEY SHALL CONFORM TO OR EXCEED THE MECHANICAL REQUIREMENTS OF ASTM A307. THE USE OF THIS ALTERNATE SHALL BE APPROVED BY THE ENGINEER.)
 - WIRE STRUTS SHOWN IN THE GUARDRAIL ANCHOR ASSEMBLY FOR CULVERTS DETAIL ARE MINIMUM ALLOWABLE SIZE AND SHALL HAVE A MINIMUM TENSILE STRENGTH OF 100,000 P.S.I. AS AN OPTION, A 7/16" DIA. WIRE STRUT WITH A MINIMUM TENSILE STRENGTH OF 90,000 PSI IS ACCEPTABLE.
- GUARDRAIL ANCHOR ASSEMBLY WITH BOLTS SHALL BE ASSEMBLED IN THE SHOP. BOLT THREADS MAY BE RECUT AS NECESSARY TO ENSURE FIT.
- THE COST OF THE GUARDRAIL ANCHOR ASSEMBLY FOR CULVERTS COMPLETE IN PLACE, SHALL BE INCLUDED IN THE UNIT CONTRACT PRICE BID FOR THE PRECAST CULVERT.
- AT THE CONTRACTOR'S OPTION, FERRULES WITH OPEN OR CLOSED ENDS MAY BE USED.
- PAYMENT FOR GUARDRAIL, POSTS, AND POST BASE PLATES IS INCLUDED IN ROADWAY PAY ITEMS.

NO.	DATE	DESCRIPTION
1	4/14/2021	ADDENDUM NO.2



CITY OF JOHNSON CITY
 BRIDGE REPLACEMENT PROJECT
 MILLER LANE OVER SINKING CREEK
 VAUGHN & MELTON
 GRAY, TN

V&M
 Vaughn & Melton
 Consulting Engineers, Inc.
 127 BOB FITZ, SUITE 2
 GRAY, TN 37615
 423-467-8401

KENTUCKY
 GEORGIA
 NORTH CAROLINA
 SOUTH CAROLINA
 TENNESSEE
 www.vaughnmelton.com
 Copyright © 2021
 All Rights Reserved

DRAWN:	NCW
CHECKED:	HLW
JOB NO:	52040-04
SCALE:	AS SHOWN
DATE:	MARCH, 2021
FILE NAME:	
DRAWING TITLE:	GUARDRAIL ANCHORAGE DETAILS
DRAWING NO.:	C-10

4/15/2021 3:29:40 PM W:\TN\Structures\052040-04 Miller Ln Bridge\Sinking Structures\STR0001-MILLER LANE BRIDGE\Final Plans\052040-04 C110 Guardrail.dgn

DESIGNED BY: HARDY WILLIS DATE: 04-2020
 DRAWN BY: NICK WARREN DATE: 04-2020
 SUPERVISED BY: HARDY WILLIS DATE: 04-2020
 CHECKED BY: TRACY WALTER DATE: 04-2020