



**20-010  
General Mowing for City Facilities**

**Addendum 1 –  
Questions/Answers**

1) QUESTION:

Is the police department location done weekly?

ANSWER:

Yes.

2) QUESTION:

Can weed control be used on shrub areas, poles, and fencing?

ANSWER:

Yes, but on a very limited basis. We prefer weed eating be done. There will be no spraying in the cemeteries.

3) QUESTION:

Some locations are secured with locked fencing/gates. How do we get to these locations?

ANSWER:

The awarded contractor will be given keys to access these locations.

4) QUESTION:

Section 1)D) states that trees will be cut, shaped, pruned, and manicured, and the yard trash will be stacked in a designated area. Will we be required to cut down entire trees or strictly trimming? Will we be told where the designated areas are?

ANSWER:

You are only required to do trimming once a year. Larger jobs will be quoted out separately. We will provide the designated area for debris. You can also remove and haul any debris to the City landfill at no charge.

5) QUESTION:

If there is trash or debris at one of the sites, what should be done with it?

ANSWER:

You are required to remove trash and debris. You can either dispose of it yourself or put it in a nearby City dumpster.

6) QUESTION:

What happens if the City adds to the list of properties?

ANSWER:

If properties are added or deleted, the contract price will be adjusted accordingly.

7) QUESTION:

Are there any requirements for our equipment?

ANSWER:

You are required to use a shroud so that debris is not sprayed from the mower.

8) QUESTION:

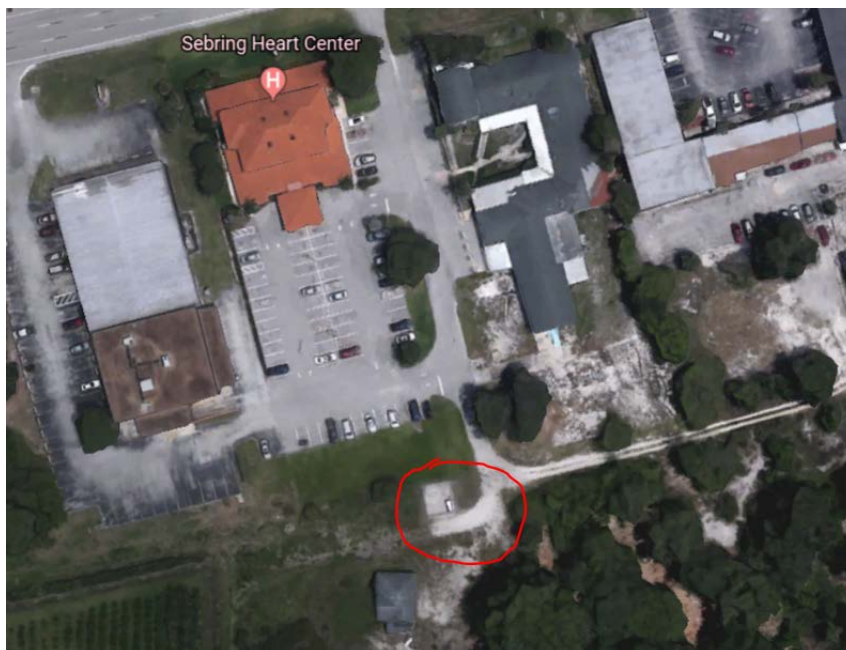
Will we be required to pay for broken sprinklers?

ANSWER:

Sprinklers are at ground level in the cemeteries. Unless it becomes a persistent problem, the City will replace broken sprinklers.

9) The following locations were viewed by the pre-bid meeting attendees:

Wastewater Collections #35 – Marriott Lift



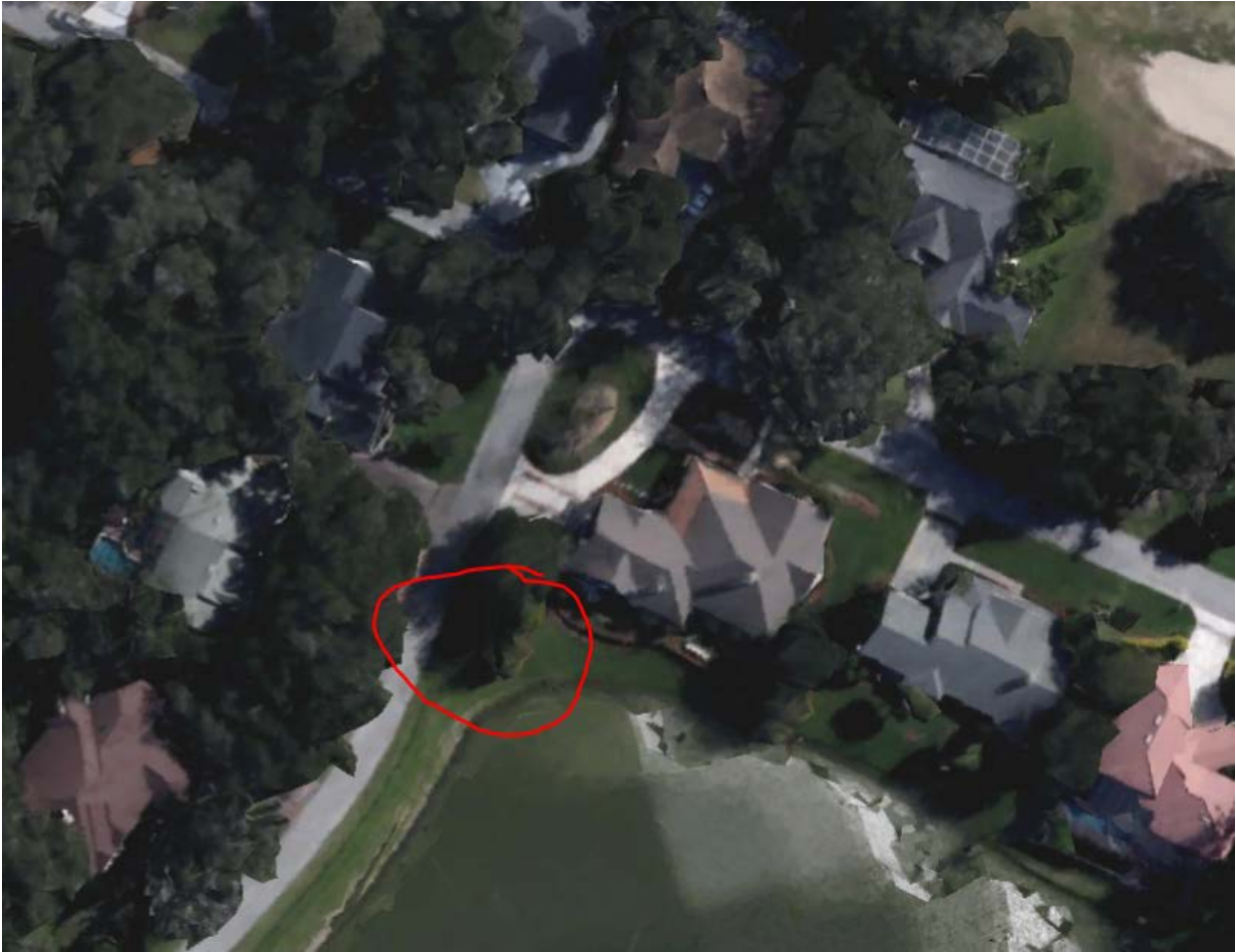
Wastewater Collections #41 – Ming Tong



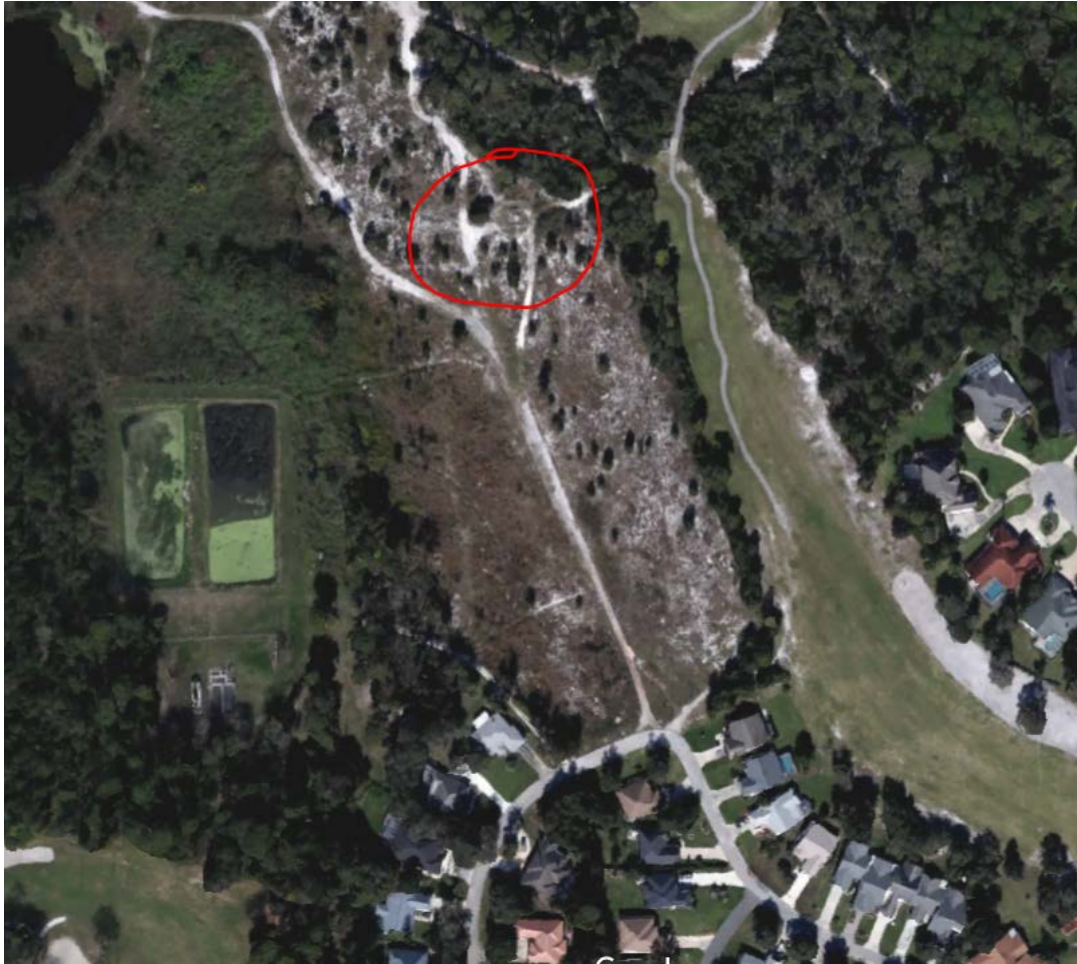
Wastewater Collections #17 – Colony Point



Wastewater Collections #52 – Country Club Enchanted Oaks



## Wastewater Collections #51 – Country Club Rodeo Drive



---

### ACKNOWLEDGEMENT

It is the vendor's responsibility to ensure their receipt of all addenda, and to clearly acknowledge all addenda within their initial bid or proposal response in the space provided on the Submittal Checklist included in the original solicitation document. Failure to do so may subject the bidder to disqualification.