

OWEN-AMES-KIMBALL  
300 IONIA AVENUE N.W.  
GRAND RAPIDS, MI 49503

PORTAGE PUBLIC SCHOOLS  
NORTH MIDDLE SCHOOL ASPHALT BID PACKAGE

PROJECT NO. 1027-1C1

**ADDENDUM NO. 1**

June 14, 2018

The following items are changes, clarifications, corrections of errors, etc., with respect to the Contract Documents previously issued. This addendum shall be a part of the Contract Documents.

Items listed below may or may not affect the cost of the Contractor's Proposal. Changes in cost shall be incorporated in the Contractor's Proposal.

**ITEM No. 1 – Prebid Meeting Minutes - ATTACHED**

**ITEM No.2 – Project Schedule - ATTACHED**

**ITEM No.3 – Phasing Plan – ATTACHED**

**END OF ADDNEDUM 1**

**PORTAGE PUBLIC SCHOOLS  
NORTH MIDDLE SCHOOL ASPHALT BID PACKAGE  
PRE-BID MEETING MINUTES  
June 5, 2018 – 2:00pm**

**1. Introductions:**

- a. Portage Public Schools - Owner
  - Ron Herron                      Assistant Superintendent of Operations
  - Allen Shearer                  Facilities Manager
  - Steve Phelps                   Maintenance Supervisor
- b. Walbridge – Owner’s Representative: David Skinner
- c. C2AE/Stantec – Design Team: Michael Baker, Sean Gross, Thomas McKercher & Gregg Jones
- d. Owen-Ames-Kimball Co. – Construction Manager: Tom Stanek, Cade Dammen, Jeff Weber & Dan Rathburn

**2. Project Description:**

- a. New asphalt drives and parking lots for the New North Middle School.

**3. Schedule / Key Topics:**

- a. Work shown on C-107 is scheduled for August 13<sup>th</sup> thru August 17<sup>th</sup> of 2018.
- b. Work shown on C-106 is scheduled for August 26<sup>th</sup> thru August 30<sup>th</sup> of 2019.

**4. Safety:**

- a. The safety of Portage Public School students and staff is our first priority.
- b. Clean-up. A clean site is a safe site. Subcontractors are responsible for cleaning up their work areas on a daily basis. Participation in weekly jobsite cleanups are mandatory for each subcontractor.
- c. Contractors must follow proper safety procedures, and keep their safety manuals on site.
- d. Start-up Meetings will be held with each contractor prior to beginning work. Safety is a large portion of these meetings.
- e. Contractors must provide their own first aid and fire protection equipment.
- f. Contractors are responsible for providing the necessary barricades for their work.
- g. Contractors must comply with the “Right to Know” law.
- h. Contractors are responsible for their own security.
- i. Contractors must comply with O-A-K’s substance abuse policy.
- j. MiOSHA’s CET division will be invited to walk the site multiple times throughout the project.

**5. Site Constraints:**

- a. Maintaining a clean site is mandatory. All roads & lots must be kept clean.
- b. All roads & entrances must remain open.
- c. Construction trailers, staging, & contractor parking will be coordinated with our Superintendent.
- d. No radios or iPods allowed on site.
- e. **NO SMOKING ON SCHOOL PROPERTY**

**6. Testing, Permits, Inspections:**

- a. Testing will be paid for by the Owner.
- b. All necessary permits and inspections are the responsibility of the affected trade.
- c. Copies of all test reports and permits must be e-mailed to [danr@oakmi.com](mailto:danr@oakmi.com) and [caded@oakmi.com](mailto:caded@oakmi.com).

**7. Temporary Services:**

- a. Temporary toilet facilities will be provided. Use of the buildings toilets is prohibited!
- b. Electrician to provide temporary power and lighting on site. Contractors to provide their own GFI protection.
- c. Existing water service will be available for use.
- d. Reference Section 01500 of the General Requirements in the CM Project Manual for information.

**8. Layout:**

- a. Owen-Ames-Kimball Co. will provide control points & benchmark.
- b. Contractors are responsible for their own layout and surveying costs.

**9. Bidding:**

- a. Bid Documents
  - i. Can be downloaded from these web addresses:
  - ii. <http://owen-ames-kimball.com/subcontractors/>
  - iii. <https://ppsnmsabp.blogspot.com/>
  - iv. Hard copies are available from ARC and KalBlue with \$100 deposit.
  - v. Questions and Substitution Requests are to be sent to Dan Rathburn, [danr@oakmi.com](mailto:danr@oakmi.com).
- b. Addendum 1 will include the Pre-Bid Meeting Minutes, Preliminary Schedule and any RFI responses.
- c. Bid Opening
  - i. Will take place Portage Public Schools Administration Building, 8107 Mustang Dr, Portage, MI 49002. *The same place as this meeting.*
  - ii. The **Bid Opening** will be Tuesday, June 19, 2018 at **2:00pm**. Bids may be hand delivered to an Owen-Ames-Kimball Co. representative starting about 15 minutes before the opening.
  - iii. Bids may be dropped off at (or mailed too) **Owen-Ames-Kimball Co.**, 300 Ionia NW, Grand Rapids, MI 40503 on Tuesday, June 19, 2018 until 12:00 Noon local time.
- d. Bid Form and Other Required Documents
  - i. Your bid must be in a sealed envelope clearly marked as to your respective bid category and must include the following (in triplicate):
    1. Bid Form
    2. Bid security/Bid Bond.
    3. Affidavit of Compliance – Iran Economic Sanctions Act
    4. Familial Disclosure Statement must be signed and notarized.
    5. Debarment Certificate
  - ii. Remember to fill in all required items on the bid forms.
  - iii. Voluntary Alternates are encouraged - list accordingly on the bid form.
- e. Prevailing Wages – Do **NOT** apply to this project.

**10. Policies and Procedures:**

- a. Monthly invoices must be submitted to O-A-K by the 20<sup>th</sup> of each month. Contractors must invoice on AIA forms G702 & G703.
- b. There will be a 10% retainage on invoices.
- c. If contractors invoice for stored material not on site, the invoice must be accompanied with pictures & an insurance certificate for that material.
- d. Any additional work requires an O-A-K CCD issued by the O-A-K Project Superintendent. Extras will not be paid for without a CDD.



**11. Insurance:**

- a. Contractors must provide insurance certificates as per specifications.
- b. Bonds & Insurance certificates are required before payment is approved and contracts are issued. Each contractor must have the insurance form approved prior to mobilization.

**12. Shop Drawings & Submittals:**

- a. Submittals are required electronically.
- b. Submittals can be viewed directly through Owen-Ames-Kimball Co.'s Project Management Website.

**13. Site Visits**

- a. Schedule any other site visits with Cade Dammen, [caded@oakmi.com](mailto:caded@oakmi.com), 616-498-8991.

**14. General Notes:**

- a. Each bidder must submit their bid per the plans and specifications.
- b. If your bid varies from these documents, you must submit the variance as a voluntary alternate with your base bid matching the bid document.
- c. Each contractor must supply sufficient manpower.
- d. Storage will be allowed on site for each phase of construction only while in construction.

**15. Questions and Answers:**

***Thanks and good luck with your bid!***



300 Ionia NW, Grand Rapids, MI

### Portage Northern Middle School Construction Schedule 4/25/2018

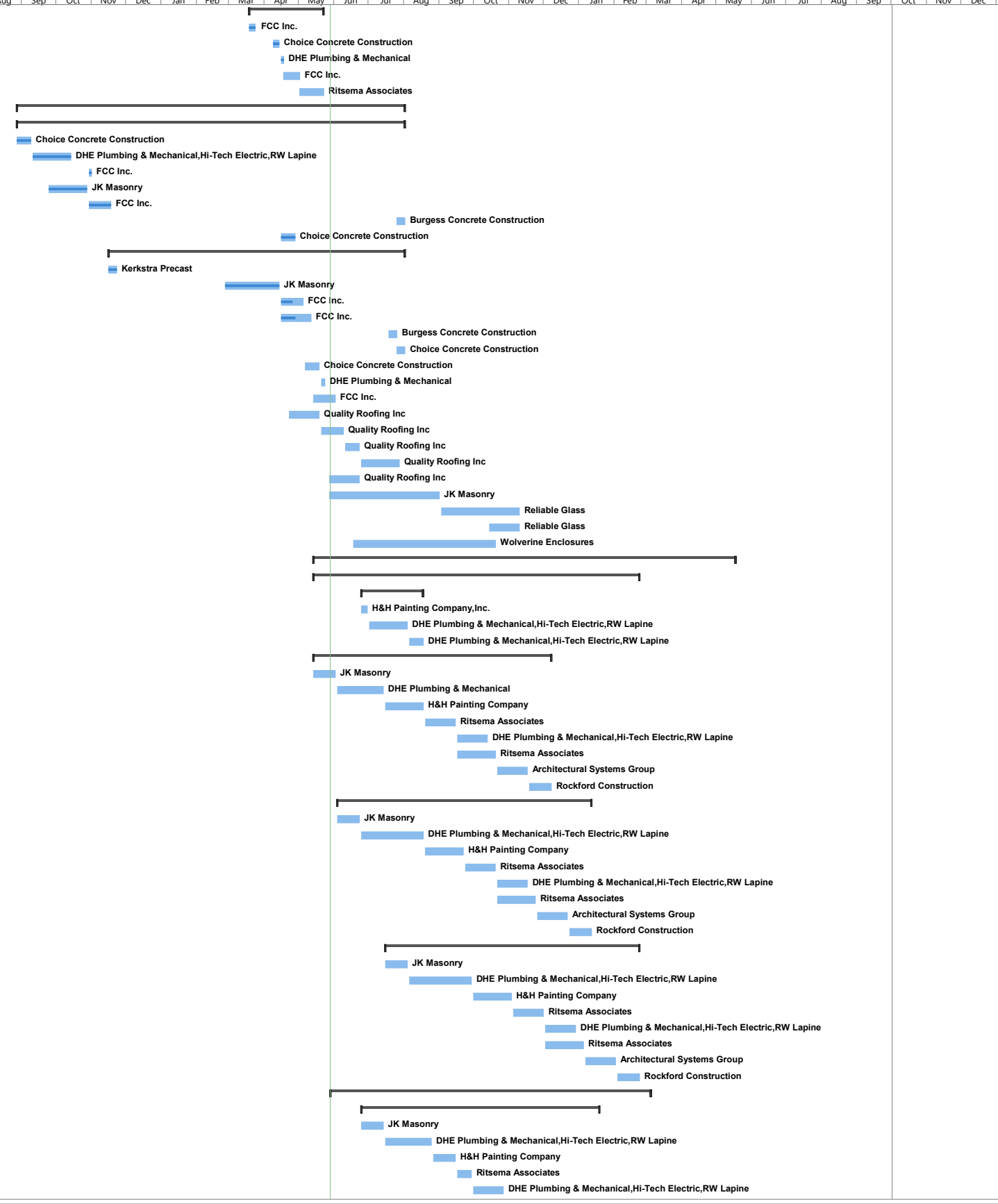
ID	Task Name	Duration	Start	Finish	Predecessors	% Complete	Resource Names	1st Quarter												2nd Quarter												3rd Quarter												4th Quarter											
								Jan	Feb	Mar	Apr	May	Jun	Jul	Aug	Sep	Oct	Nov	Dec	Jan	Feb	Mar	Apr	May	Jun	Jul	Aug	Sep	Oct	Nov	Dec	Jan	Feb	Mar	Apr	May	Jun	Jul	Aug	Sep	Oct	Nov	Dec	Jan	Feb	Mar	Apr	May	Jun	Jul	Aug	Sep	Oct	Nov	Dec
1	<b>Preconstruction</b>	<b>132 days</b>	<b>Mon 2/6/17</b>	<b>Tue 8/8/17</b>		<b>100%</b>		Preconstruction																																															
12	<b>Construction</b>	<b>610 days</b>	<b>Wed 5/31/17</b>	<b>Tue 10/1/19</b>		<b>18%</b>		Construction																																															
13	Mobilization	5 days	Wed 5/31/17	Tue 6/6/17 11SS		100%	Owen-Ames-Kimball	Mobilization																																															
14	<b>Sitework</b>	<b>610 days</b>	<b>Wed 5/31/17</b>	<b>Tue 10/1/19</b>		<b>31%</b>		Sitework																																															
15	Existing utility survey	3 days	Wed 5/31/17	Fri 6/2/17 13SS		100%	Owen-Ames-Kimball	Existing utility survey																																															
16	<b>Lay-down Area</b>	<b>15 days</b>	<b>Mon 6/5/17</b>	<b>Fri 6/23/17</b>		<b>100%</b>		Lay-down Area																																															
17	Underground Utilities Under Temp Road	8 days	Mon 6/5/17	Wed 6/14/17 15		100%	Lounsbury Excavating, Inc.	Lounsbury Excavating, Inc.																																															
18	Temporary road	2 days	Thu 6/15/17	Fri 6/16/17 17		100%	Lounsbury Excavating	Temporary road																																															
19	Strip/stockpile soils	2 days	Mon 6/19/17	Tue 6/20/17 18		100%	Lounsbury Excavating	Strip/stockpile soils																																															
20	Gravel at lay-down	3 days	Wed 6/21/17	Fri 6/23/17 19		100%	Lounsbury Excavating	Gravel at lay-down																																															
21	Rough grade	5 days	Mon 6/26/17	Fri 6/30/17 20		100%	Lounsbury Excavating	Rough grade																																															
22	Underground Utilities (needed for construction)	15 days	Mon 7/3/17	Fri 7/21/17 21		100%	Lounsbury Excavating	Underground Utilities (needed for construction)																																															
23	Underground Stormwater Storage	30 days	Mon 7/24/17	Fri 9/1/17 22		100%	Lounsbury Excavating	Underground Stormwater Storage																																															
24	<b>2018 Sitework</b>	<b>51 days</b>	<b>Fri 6/8/18</b>	<b>Fri 8/17/18</b>		<b>0%</b>		2018 Sitework																																															
25	Last Day of School 2018	1 day	Fri 6/8/18	Fri 6/8/18		0%	Owen-Ames-Kimball	Last Day of School 2018																																															
26	Site Demo (Below Exist. M.S.)/Grading	6 days	Wed 6/20/18	Wed 6/27/18 25FS+7 days		0%	Lounsbury Excavating	Site Demo (Below Exist. M.S.)/Grading																																															
27	Underground Utilities	15 days	Thu 6/28/18	Wed 7/18/18 26		0%	Lounsbury Excavating	Underground Utilities																																															
28	Curb & Gutter	12 days	Thu 7/12/18	Fri 7/27/18 27SS+10 days		0%	Choice Concrete Construction	Curb & Gutter																																															
29	Sidewalk	10 days	Mon 7/30/18	Fri 8/10/18 28		0%	Choice Concrete Construction	Sidewalk																																															
30	<b>Asphalt</b>	<b>5 days</b>	<b>Mon 8/13/18</b>	<b>Fri 8/17/18 29</b>		<b>0% TBD</b>		Asphalt																																															
31	<b>2019 Sitework</b>	<b>83 days</b>	<b>Fri 6/7/19</b>	<b>Tue 10/1/19</b>		<b>0%</b>		2019 Sitework																																															
32	Last Day of School 2019	1 day	Fri 6/7/19	Fri 6/7/19		0%	Owen-Ames-Kimball	Last Day of School 2019																																															
33	Demo Existing Middle School	30 days	Mon 6/10/19	Fri 7/19/19 32		0%	TBD	Demo Existing Middle School																																															
34	Site Demo/Grading	3 days	Mon 7/1/19	Wed 7/3/19 33SS+15 days		0%	Lounsbury Excavating	Site Demo/Grading																																															
35	Underground Utilities	10 days	Thu 7/4/19	Wed 7/17/19 34		0%	Lounsbury Excavating	Underground Utilities																																															
36	Curb & Gutter	15 days	Thu 7/18/19	Wed 8/7/19 35		0%	Choice Concrete Construction	Curb & Gutter																																															
37	Sidewalk	14 days	Thu 8/8/19	Tue 8/27/19 36		0%	Choice Concrete Construction	Sidewalk																																															
38	<b>Asphalt</b>	<b>3 days</b>	<b>Wed 8/28/19</b>	<b>Fri 8/30/19 37</b>		<b>0% TBD</b>		Asphalt																																															
39	Landscaping	15 days	Wed 8/28/19	Tue 9/17/19 37		0%	TBD	Landscaping																																															
40	Seeding	10 days	Wed 9/18/19	Tue 10/1/19 39		0%	TBD	Seeding																																															
41	<b>Building Shell</b>	<b>359 days</b>	<b>Mon 6/26/17</b>	<b>Fri 11/9/18</b>		<b>49%</b>		Building Shell																																															
42	<b>Area C</b>	<b>262 days</b>	<b>Mon 6/26/17</b>	<b>Wed 6/27/18</b>		<b>84%</b>		Area C																																															
43	<b>Level 1</b>	<b>262 days</b>	<b>Mon 6/26/17</b>	<b>Wed 6/27/18</b>		<b>88%</b>		Level 1																																															
44	C Footings/Foundations	2.8 wks	Mon 6/26/17	Fri 7/14/17 22		100%	Choice Concrete Construction	C Footings/Foundations																																															
45	Set C Columns	2 days	Mon 7/17/17	Tue 7/18/17 44		100%	FCC Inc.	Set C Columns																																															
46	C Masonry Bearing 1st Floor	5 wks	Mon 7/17/17	Fri 8/18/17 44		100%	JK Masonry, Inc.	C Masonry Bearing 1st Floor																																															
47	C Steel 1st Floor	2 wks	Mon 8/14/17	Fri 8/25/17 46SS+4 wks		100%	FCC Inc.	C Steel 1st Floor																																															
48	Polished Floor Slab	8 days	Mon 6/18/18	Wed 6/27/18 54		0%	Burgess Concrete Construction, Inc.	Polished Floor Slab																																															
49	Floor Slab	8 days	Thu 5/3/18	Mon 5/14/18		100%	Choice Concrete Construction	Floor Slab																																															
50	<b>Level 2</b>	<b>170 days</b>	<b>Mon 10/23/17</b>	<b>Fri 6/15/18</b>		<b>83%</b>		Level 2																																															
51	C 2nd Floor Precast	1 wk	Mon 10/23/17	Fri 10/27/17 46,47		100%	Kerkstra Precast	C 2nd Floor Precast																																															
52	C Masonry Bearing 2nd Floor	7 wks	Mon 10/30/17	Fri 12/15/17 51		100%	JK Masonry	C Masonry Bearing 2nd Floor																																															
53	C Steel 2nd Floor	2 wks	Mon 12/11/17	Fri 12/22/17 52SS+6 wks		100%	FCC Inc.	C Steel 2nd Floor																																															
54	Polished Precast Topping	1 wk	Mon 6/11/18	Fri 6/15/18 60		0%	Burgess Concrete Construction	Polished Precast Topping																																															
55	Precast Topping	1 wk	Mon 6/11/18	Fri 6/15/18 60		0%	Choice Concrete Construction	Precast Topping																																															
56	<b>Level 3</b>	<b>120 days</b>	<b>Mon 12/25/17</b>	<b>Fri 6/8/18</b>		<b>82%</b>		Level 3																																															
57	C Precast 3rd Floor	1 wk	Mon 12/25/17	Fri 12/29/17 52,53		100%	Kerkstra Precast	C Precast 3rd Floor																																															
58	C 3rd Floor Masonry Bearing	7 wks	Mon 1/1/18	Fri 2/16/18 57		100%	JK Masonry	C 3rd Floor Masonry Bearing																																															
59	C Roof Steel	6 wks	Mon 2/19/18	Fri 3/30/18 58		100%	FCC Inc.	C Roof Steel																																															
60	Polished Precast Topping	1 wk	Mon 6/4/18	Fri 6/8/18 107FS+10 days		0%	Burgess Concrete Construction	Polished Precast Topping																																															
61	Precast Topping	2 wks	Mon 4/16/18	Fri 4/27/18 84		0%	Choice Concrete Construction	Precast Topping																																															
62	<b>Area B</b>	<b>263 days</b>	<b>Mon 7/17/17</b>	<b>Wed 7/18/18</b>		<b>71%</b>		Area B																																															
63	<b>Level 1</b>	<b>263 days</b>	<b>Mon 7/17/17</b>	<b>Wed 7/18/18</b>		<b>81%</b>		Level 1																																															
64	B Footings/Foundations	6 wks	Mon 7/17/17	Fri 8/25/17 44		100%	Choice Concrete Construction	B Footings/Foundations																																															
65	B Set Columns	2 days	Mon 7/31/17	Tue 8/1/17 64		100%	FCC Inc.	B Set Columns																																															
66	B Masonry Bearing 1st Floor	4 wks	Wed 8/2/17	Tue 8/29/17 65		100%	JK Masonry	B Masonry Bearing 1st Floor																																															
67	B Steel 1st Floor	1 wk	Wed 8/23/17	Tue 8/29/17 66SS+3 wks		100%	FCC Inc.	B Steel 1st Floor																																															
68	Polished Floor Slab	2 wks	Thu 7/5/18	Wed 7/18/18 75		0%	Burgess Concrete Construction	Polished Floor Slab																																															
69	Floor Slab	2 wks	Tue 5/15/18	Mon 5/28/18 49		50%	Choice Concrete Construction	Floor Slab																																															
70	<b>Level 2</b>	<b>183 days</b>	<b>Mon 10/30/17</b>	<b>Wed 7/11/18</b>		<b>86%</b>		Level 2																																															
71	B 2nd Floor Precast	1 wk	Mon 10/30/17	Fri 11/3/17 66,67		100%	Kerkstra Precast	B 2nd Floor Precast																																															
72	B Masonry Bearing 2nd Floor	6 wks	Mon 11/27/17	Fri 1/5/18 71,52SS+4 wks		100%	JK Masonry	B Masonry Bearing 2nd Floor																																															
73	B Roof Masonry Bearing	2 wks	Mon 2/19/18	Fri 3/2/18 58		100%	JK Masonry	B Roof Masonry Bearing																																															
74	B High Roof Steel	3 wks	Mon 3/26/18	Fri 4/13/18 59		100%	FCC Inc.	B High Roof Steel																																															
75	Polished Precast Topping	1 wk	Thu 6/28/18	Wed 7/4/18 48		0%	Burgess Concrete Construction	Polished Precast Topping																																															
76	Precast Topping	1 wk	Thu 7/5/18	Wed 7/11/18 75		0%	Choice Concrete Construction	Precast Topping																																															
77	<b>B "Phase 2" (Crane Access Spots)</b>	<b>45 days</b>	<b>Mon 4/2/18</b>	<b>Fri 6/1/18</b>		<b>33%</b>		B "Phase 2" (Crane Access Spots)																																															
78	Footings/Foundations	2 wks	Mon 4/2/18	Fri 4/13/18 74		100%	Choice Concrete Construction	Footings/Foundations																																															
79	Masonry	4 wks	Mon 4/16/18	Fri 5/11/18 99		25%	JK Masonry	Masonry																																															
80	Joist & Deck	2 wks	Mon 5/14/18	Fri 5/25/18 101		0%	FCC Inc.	Joist & Deck																																															
81	Floor Slab	1 wk	Mon 5/28/18	Fri 6/1/18 80		0%	Choice Concrete Construction	Floor Slab																																															



300 Tonia NW, Grand Rapids, MI

Portage Nothorn Middle School
Construction Schedule
4/25/2018

Table with columns: ID, Task Name, Duration, Start, Finish, Predecessors, % Complete, Resource Names, and a Gantt chart grid showing quarterly progress from 1st Quarter to 4th Quarter.





300 Tonia NW, Grand Rapids, MI

Portage Nothorn Middle School
Construction Schedule
4/25/2018

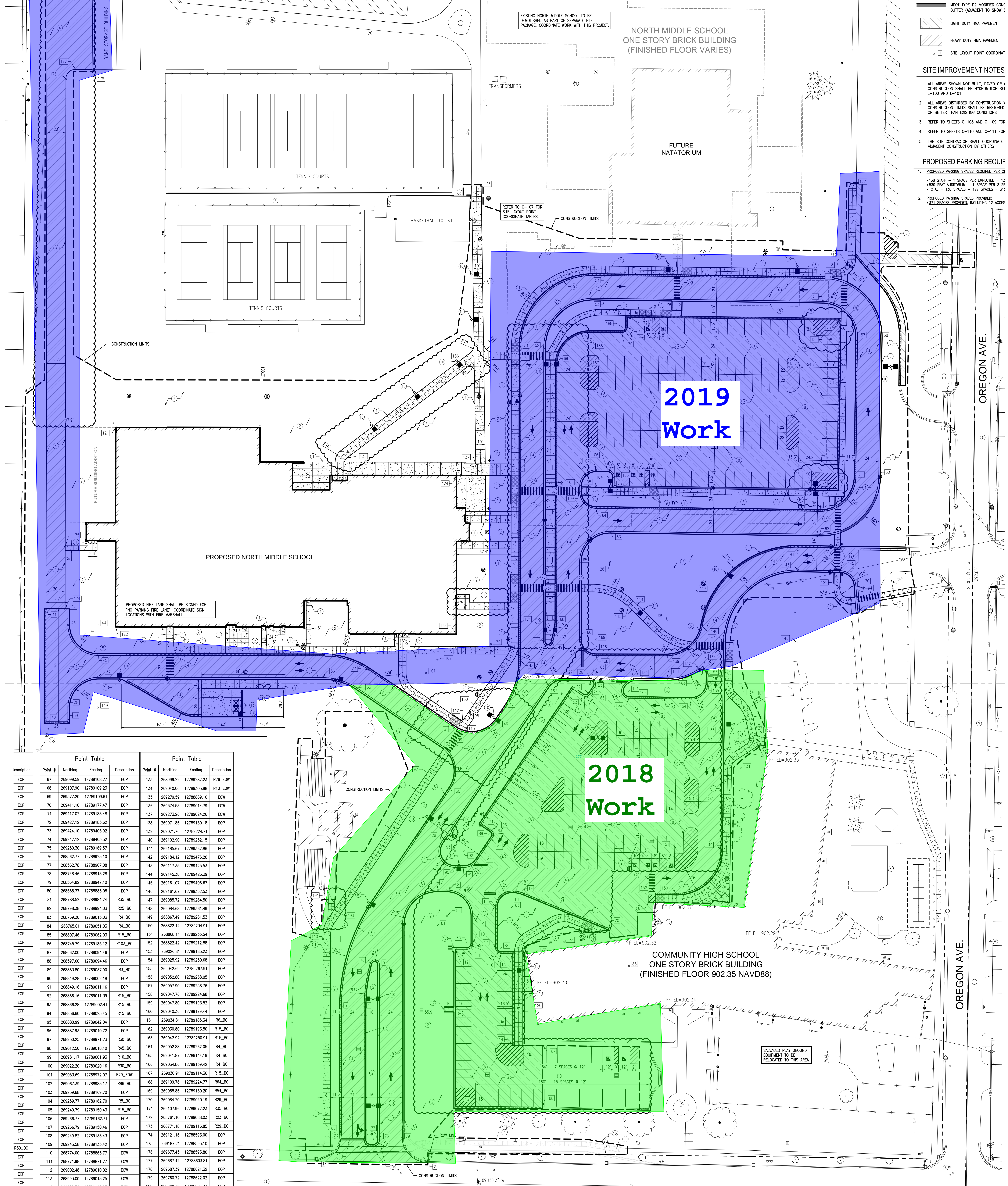
Table with columns: ID, Task Name, Duration, Start, Finish, Predecessors, % Complete, Resource Names, and a Gantt chart grid showing project progress from 1st Quarter to 4th Quarter.

- 1 CONCRETE SIDEWALK - REFER TO LANDSCAPE SHEETS FOR REQUIREMENTS
- 2 LIGHT DUTY HMA PAVEMENT
- 3 HEAVY DUTY HMA PAVEMENT
- 4 24" WIDE STOP BAR PAVEMENT MARKING WITH R1-1 STOP SIGN MOUNTED ON 13" LONG #3 STEEL POST
- 5 12" WIDE WHITE STANDARD CROSSWALK PAVEMENT MARKING
- 6 WHITE CONTINENTAL CROSSWALK PAVEMENT MARKING, BARS 12" WIDE AND SPACED 24" APART
- 7 4" WIDE YELLOW PAVEMENT MARKING, PLACE AT 3' C-C FOR NO PARKING AREAS AND AISLE WAYS.
- 8 4" WIDE BLUE PAVEMENT MARKING, PLACE AT 3' C-C FOR BARRIER-FREE AISLE WAYS. INSTALL BARRIER FREE SYMBOL PAVEMENT MARKING AT EACH SPACE WITH 12"x18" BARRIER FREE SIGN MOUNTED ON 13" LONG STEEL POST. INSTALL VAN ACCESSIBLE SIGN AT SPACE TO LEFT OF 8' AISLE.
- 9 SITE LIGHTING, REFER TO ELEC DWGS FOR REQUIREMENTS
- 10 FLAG POLE
- 11 CHAIN-LINK SWING GATE
- 12 CONCRETE STEPS
- 13 SALVAGE EXISTING SIGN TO CITY OF PORTAGE. INSTALL TAPCO RECTANGULAR RAPID FLASH BEACON (RFB-123) OR APPROVED EQUAL WITH PEDESTAL AND (2) EA WL-2 & (2) EA W16-1P(R) SIGNS.

- ### SITE IMPROVEMENT LEGEN
- CONSTRUCTION LIMITS
  - MOT TYPE F4 CONCRETE CURB
  - WASH OUT GUTTER PAN, TRANK GUTTER TO WASH OUT 10' EX
  - MOT TYPE O2 MODIFIED CON GUTTER (ADJACENT TO SNOW)
  - LIGHT DUTY HMA PAVEMENT
  - HEAVY DUTY HMA PAVEMENT
  - × SITE LAYOUT POINT COORDINATE

- ### SITE IMPROVEMENT NOTES
1. ALL AREAS SHOWN NOT BUILT, PAVED OR 1 CONSTRUCTION SHALL BE HYDROMULCH SET C-109 AND C-101
  2. ALL AREAS DISTURBED BY CONSTRUCTION OR BETTER THAN EXISTING CONDITIONS
  3. REFER TO SHEETS C-108 AND C-109 FOR
  4. REFER TO SHEETS C-110 AND C-111 FOR
  5. THE SITE CONTRACTOR SHALL COORDINATE ADJACENT CONSTRUCTION BY OTHERS

- ### PROPOSED PARKING REQUIREMENTS
1. PROPOSED PARKING SPACES REQUIRED PER CODE
    - 138 STAFF - 1 SPACE PER EMPLOYEE = 138
    - 530 SEAT AUDITORIUM - 1 SPACE PER 3 SE = 177
    - TOTAL = 138 SPACES + 177 SPACES = 315
  2. PROPOSED PARKING SPACES PROVIDED
    - 317 SPACES PROVIDED, INCLUDING 12 ACCESS



Description	Point Table			Point Table				
	Point #	Northing	Eastings	Description	Point #	Northing	Eastings	Description
ROP	67	269099.59	12789108.27	ROP	133	268999.22	12789282.23	R26_EDW
ROP	68	269107.80	12789109.23	ROP	134	269040.06	12789303.88	R10_EDW
ROP	69	269377.20	12789109.61	ROP	135	269279.59	12788889.16	ROP
ROP	70	269411.10	12789177.47	ROP	136	269374.53	12789014.79	EDW
ROP	71	269417.02	12789183.48	ROP	137	269273.26	12789024.26	EDW
ROP	72	269427.12	12789183.62	ROP	138	269071.86	12789150.18	EDW
ROP	73	269424.10	12789405.92	ROP	139	269071.76	12789224.71	EDW
ROP	74	269247.12	12789403.52	ROP	140	269102.90	12789362.15	EDW
ROP	75	269250.30	12789169.57	ROP	141	269185.67	12789362.86	EDW
ROP	76	268562.77	12788923.10	ROP	142	269184.12	12789476.20	EDW
ROP	77	268562.78	12788907.08	ROP	143	269117.35	12789425.53	EDW
ROP	78	268748.46	12789133.28	ROP	144	269145.38	12789423.39	EDW
ROP	79	268564.82	12788947.10	ROP	145	269161.07	12789406.67	EDW
ROP	80	268568.37	12788883.08	ROP	146	269161.07	12789362.53	EDW
ROP	81	268788.52	12788984.24	R35_BC	147	269085.72	12789284.50	EDW
ROP	82	268798.38	12788994.03	R25_BC	148	269084.68	12789361.49	EDW
ROP	83	268769.30	12789015.03	R4_BC	149	268867.49	12789291.53	EDW
ROP	84	268765.01	12789051.03	R4_BC	150	268822.12	12789234.91	EDW
ROP	85	268807.46	12789062.03	R15_BC	151	268868.11	12789235.54	EDW
ROP	86	268745.79	12789185.12	R103_BC	152	268822.42	12789212.88	EDW
ROP	87	268662.00	12789094.46	ROP	153	269026.81	12789185.23	EDW
ROP	88	268597.60	12789094.46	ROP	154	269025.92	12789250.68	EDW
ROP	89	268883.80	12789037.90	R3_BC	155	269042.69	12789267.91	EDW
ROP	90	268849.28	12789002.18	ROP	156	269052.80	12789268.05	EDW
ROP	91	268849.16	12789011.16	ROP	157	269057.90	12789258.76	EDW
ROP	92	268866.16	12789011.39	R15_BC	158	269047.76	12789224.68	EDW
ROP	93	268866.28	12789002.41	R15_BC	159	269047.80	12789193.52	EDW
ROP	94	268866.60	12789025.45	R15_BC	160	269040.36	12789179.44	EDW
ROP	95	268880.99	12789042.04	ROP	161	269034.81	12789185.34	R6_BC
ROP	96	268887.83	12789040.72	ROP	162	269030.80	12789193.50	R15_BC
ROP	97	268850.25	12788971.23	R30_BC	163	269042.92	12789250.91	R15_BC
ROP	98	269012.50	12789018.10	R45_BC	164	269052.88	12789262.05	R4_BC
ROP	99	268981.17	12789001.93	R10_BC	165	269041.87	12789144.19	R4_BC
ROP	100	269022.20	12789020.16	R30_BC	166	269034.86	12789139.42	R4_BC
ROP	101	269035.69	12788972.07	R29_EDW	167	269030.91	12789114.36	R15_BC
ROP	102	269067.39	12788983.17	R86_BC	168	269109.76	12789224.77	R64_BC
ROP	103	269259.68	12789169.70	ROP	169	269088.86	12789150.20	R54_BC
ROP	104	269259.77	12789162.70	R5_BC	170	269084.20	12789040.19	R29_BC
ROP	105	269249.79	12789150.43	R15_BC	171	269107.96	12789072.23	R35_BC
ROP	106	269266.77	12789162.71	ROP	172	268761.10	12789088.03	R23_BC
ROP	107	269266.79	12789150.46	ROP	173	268771.18	12789116.85	R29_BC
ROP	108	269249.82	12789133.43	ROP	174	269121.16	12789593.00	EDW
ROP	109	269243.58	12789133.42	ROP	175	269187.21	12788593.10	EDW
ROP	110	268774.00	12788863.77	EDW	176	269677.43	12788593.80	EDW
ROP	111	268771.98	12788871.77	EDW	177	269687.49	12788603.81	EDW
ROP	112	269002.48	12789010.02	EDW	178	269687.39	12788621.32	EDW
ROP	113	268993.00	12789013.25	EDW	179	269760.72	12788622.07	EDW
ROP	114	269128.74	12789190.23	EDW	180	269760.75	12788603.77	EDW
ROP	115	269122.98	12789184.67	EDW	181	269770.76	12788593.93	EDW
ROP	116	269084.83	12789146.44	R54_EDW	182	269815.10	12788594.00	EDW
ROP	117	269140.11	12789256.20	R54_EDW	183	269830.07	12788608.76	EDW
ROP	118	269487.62	12789405.03	R10_EDW	184	269830.05	12788559.09	EDW
ROP	119	269017.11	12788627.85	R30_BC	185	269815.03	12788574.00	EDW
ROP	120	268702.15	12789083.08	R202_BC	186	269395.11	12789147.64	R50_BC
ROP	121	269311.47	12788646.30	APP BLD COR	187	269377.15	12789143.61	R36_BC
ROP	122	269102.14	12788646.00	APP BLD COR	188	269417.10	12789177.48	R4_BC
ROP	123	269094.29	12789003.79	APP BLD COR	189	269406.84	12789388.15	R35_BC

WEST MILHAM AVE.

OREGON AVE.