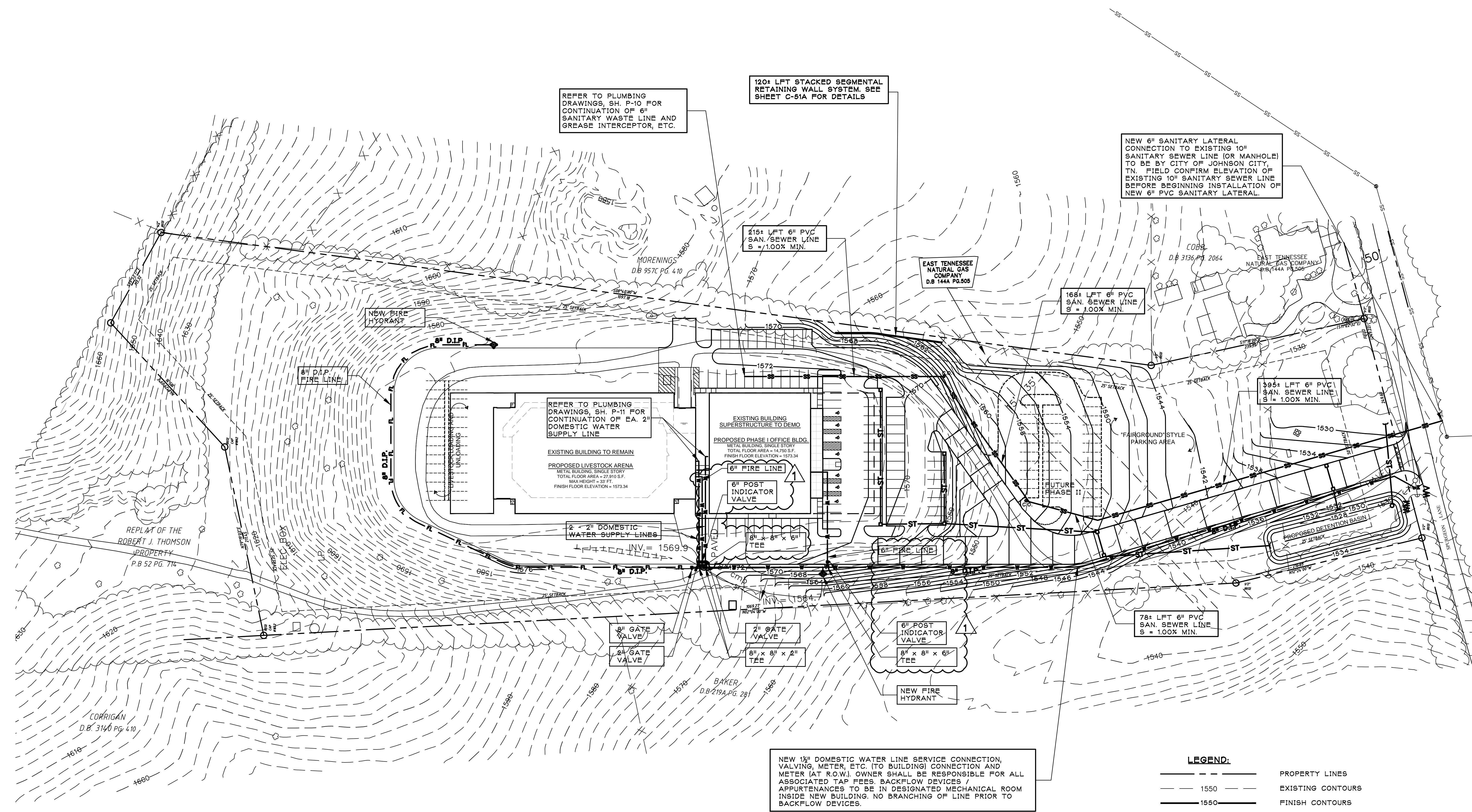


0	00-00-00	date	revision	XXXX



WATERLINE NOTES:

- ALL WATER LINES TO BE 2'-6" MIN. BELOW FINISH GRADE. CONFIRM ELEVATIONS W/ OTHER UTILITIES. ALL WATERLINES (6" THRU 12") TO BE DUCTILE IRON, PVC PIPE, SDR 21, CLASS 200 PRESSURE RATED CONFORMING TO ASTM D2241 (2" THRU 4"). PIPE MUST BEAR THE NATIONAL SANITATION FOUNDATION TESTING LABORATORIES, INC. SEAL OF APPROVAL FOR POTABLE WATER, OR AN APPROVED EQUAL.
- ALL TAPS ARE TO BE MADE UNDER GRASSY AREAS (NOT UNDER ASPHALT OR CONCRETE). ALL WATER SERVICES TO BE LOCATED SO THAT THEY WILL NOT BE LOCATED IN DRIVEWAYS. ANY METERS THAT NEED TO BE MOVED LATER MUST BE MOVED AT DEVELOPER'S COST.
- CITY OF JOHNSON CITY WATER SERVICES DIVISION WILL TAP EXISTING LINE. OWNER SHALL BE RESPONSIBLE FOR ALL ASSOCIATED TAP FEES. TDEC STANDARDS FOR DISINFECTION OF NEWLY INSTALLED WATERLINES MUST BE FOLLOWED.
- MEGALUG JOINT RESTRAINTS SHALL BE USED AT ALL VALVES AND FITTINGS WITHOUT EXCEPTION AND SHALL BE INSTALLED AS SPECIFIED BY THE MANUFACTURER. THRUST BLOCKING SHALL BE USED IN CONJUNCTION WITH MEGALUGS WHERE APPROPRIATE. THRUST BLOCKING SHALL BE INSTALLED AS SHOWN AND SPECIFIED IN THE STANDARD DETAILS PROVIDED IN THE CONTRACT DRAWINGS.

SANITARY SEWER NOTES:

- SANITARY SEWER CONNECTION TO BE MADE BY THE CITY OF JOHNSON CITY. THE OWNER SHALL BE RESPONSIBLE FOR ALL ASSOCIATED CONNECTION FEES.
- SANITARY SEWER PIPING TO BE ASTM 3034 CLASS PVC IN ACCORDANCE WITH THE CITY OF JOHNSON CITY, TENNESSEE STANDARDS (SDR 35 PVC ACCEPTABLE FOR PRIVATE LINES).
- ALL 6" SANITARY SEWER LATERALS TO BE 4'-0" MIN. DEPTH AT PROPERTY LINE, TYP.

SITE UTILITIES PLAN
 1" = 50'

NOTES:

- THE ABOVE SITE UTILITIES PLAN SUPERIMPOSED ON SITE SURVEY INFORMATION PROVIDED BY CAIN RASH WEST ARCHITECTS AS SURVEYED BY ALLEY & ASSOCIATES, SURVEYORS AND SUPERIMPOSED ON TOPOGRAPHIC AERIAL MAPPING BY TUCK MAPPING SOLUTIONS, INC.
- FOR PURPOSES OF ESTABLISHING SUB-GRADES, THE FOLLOWING FINISH SURFACE THICKNESSES ARE APPLICABLE: PAVING 8" (3" ASPHALT AND 6" BASE STONE), 12" FOR EXTERIOR CONCRETE SLAB (6" CONCRETE AND 6" BASE STONE).

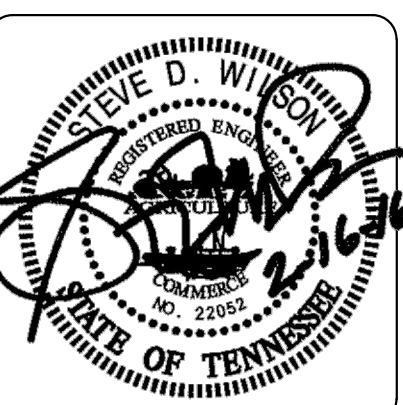
LEGEND:

---	1550	EXISTING CONTOURS
---	1550	FINISH CONTOURS
---	1572.75 +	UTILITY EASEMENT LINES
---		FINISH SPOT ELEVATIONS
---		BUILDING SETBACK LINES
---		EXISTING 8" WATER LINES
---		BUILDING SETBACK LINES
---		EXISTING 10" SANITARY SEWER
---		NEW 6" FIRE LINE
---		NEW 2" WATER LINE
---		NEW 6" SANITARY SEWER LATERAL
---		EXISTING BUILDING FOOTPRINT
---		GATE VALVE
---		TEE

ADDENDUM NO. 1
 2-16-2016

A New Agricultural Facility For
Sullivan County Tennessee
 Blountville, Tennessee

Architectural Services
Cain Rash West Architects
 130 Regional Park Dr.
 Kingsport, TN 37660
 Phn (423) 349-7760
 Fax (423) 349-7413
 www.grcinc.com



issued	01-29-2016
checked	SDW
approved	SDW
drawn	SGN
project no.	201538-SW15149
drawing name	SITE UTILITIES PLAN

