

ADDENDUM No. 3

July 23, 2019

Project:

Grant County Airport Terminal Renovation
 Grant County IFB No. B-20-02
 AIP Project No. 3-35-0039-021-2019
 NMDOT – Aviation Division Grant No. SVC-19-03

Architect:

ASA Architects
 201 North Alameda
 Las Cruces, New Mexico 88005

Owner:

Grant County
 1400 Highway 180 East
 Silver City, NM 88061

This addendum forms a part of the Contract Documents and modifies the original specifications and drawings dated July 5, 2019 and previously issued addenda. Acknowledge receipt of this addendum in the space provided on the Bid Form. Failure to do so may subject the bidder to disqualification.

A. PROJECT MANUAL:

1. Section 00 2400 – BID LOTS (DESCRIPTIONS)-REV01
 - b. **DELETE** in paragraph 2.1 BID LOT No. 1 (Base Bid): Reference to asphalt paving.
 - a. **CLARIFICATION** Paragraph 2.2 BID LOT No. 2: HVAC work described in subparagraph C. includes the work of SS-1 in Waiting (4) as shown in the drawings.
 - c. **CLARIFICATION** Paragraph 2.2 BID LOT No. 2: Electrical work described in subparagraph D. includes the work of Panel B.
 - d. **CLARIFICATION** Paragraph 2.4 BID LOT No. 4, Bid Alternate No. 1: Interior door/frame assemblies are not included in Bid Lot No. 4, Bid Alt. No. 1; interior door /frame assemblies remain wood/hollow metal as specified and shown in the drawings.
2. Section 07 5400 – THERMOPLASTIC MEMBRANE ROOFING
 - a. **CHANGE** in Paragraph 2.1 ACCEPTABLE MANUFACTURERS as follows:

“A. Subject to compliance with requirements, manufactures offering products which may be incorporated in the work include, **but are not limited to**, the following:”
 - b. **ADD** to Paragraph 2.1 ACCEPTABLE MANUFACTURERS the following:

“4. Versico Roofing Systems - Carlisle, PA (800) 992-7663”
3. Section 10 2119 – POLYMER RESIN TOILET PARTITIONS
 - a. **CHANGE** Paragraph 2.1 Acceptable Manufacturers as follows::

"A. Subject to compliance with requirements, manufactures offering products which may be incorporated in the work include, **but are not limited to**, the following:"

b. **ADD** to Paragraph 2.1 ACCEPTABLE MANUFACTURERS the following:

"5. Scranton Products, 801 E Corey St, Scranton, PA"

B. **DRAWINGS**

1. SHEET G-001

a. **REPLACE** Bid Lot Descriptions with the revised descriptions issued with Addendum No. 1, "Bid Lots (Descriptions)-REV01."

b. **CLARIFICATION** Project Data, Applicable Codes: National Electrical Code as listed is applicable to all new electrical work as shown in the drawings; the intent is not to apply current code requirements retroactively to existing and unaltered electrical installations.

2. Sheet A-103, NEW ROOF PLAN

a. **CLARIFICATION**: All existing gutters and downspouts are to be removed as part of the roof demolition and to be replaced with new gutters and downspouts as shown in the drawings. Any references to reinstalling existing gutters is to be disregarded

3. Sheet A-104, FINISH SCHEDULE

a. **CLARIFICATION**: Refer to Project Manual, Section 09 5100 for specified "washable lay-in" products for use in Men (6), Janitor (7), and Women (8).

4. Sheet A-200, SOUTH ELEVATION:

a. **CLARIFICATION**: Height of exterior building letters shall be twelve inches (12") for capital letters and adjusted as required for matching font lower case letters.

5. Sheet A-400, INTERIOR ELEVATIONS

a. **ADD** to Elevation 11 – LOBBY: Based on the dimensions shown in the elevation and the floor plan, the overall dimensions of the two window assemblies are 6'-6"W x 9'-8"H and 7'-0"W x 9'-8"H with horizontal mullions at approximately 1'-6" below the head, as shown in Elevation 11.

6. Sheet A-500, DOOR SCHEDULE

a. **ADD** sign adjacent to door 6A:



- b. **ADD** sign adjacent to door 7A:



- c. **ADD** sign adjacent to door 8A:



7. Sheet A-501, DETAILS

- a. **REPLACE** Sheet A-501 with Sheet A-501 REV1 included as an attachment to Addendum #3.

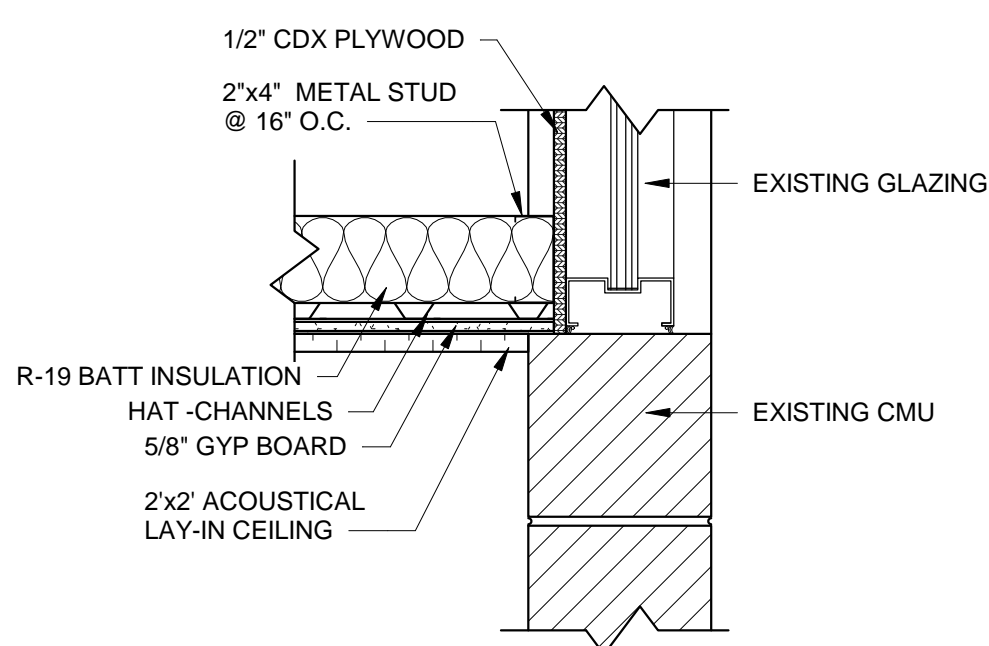
8. Sheet E-001, STATE OF NM NOTES:

- a. **CLARIFICATION** Note A: Reference to mounting height of wiring or control devices is applicable to all new devices and not intended to apply to any existing and unaltered device.

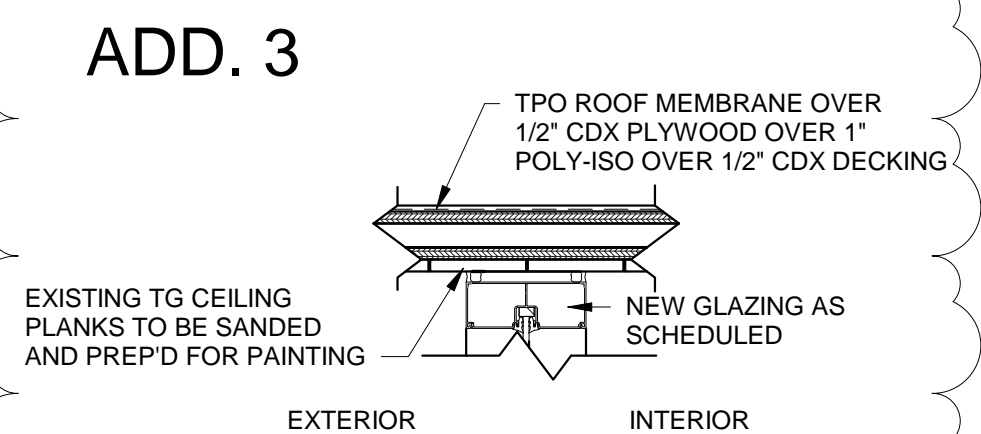
9. Sheet E-101, GENERAL NOTES

- a. **CLARIFICATION** General Note E: HVAC power and control conduit runs shall be concealed in the unit and the equipment curb and not exposed on the roof; conduits runs providing power to interior light fixtures shall be routed on the interior side of the roof deck and painted to blend into the finish.

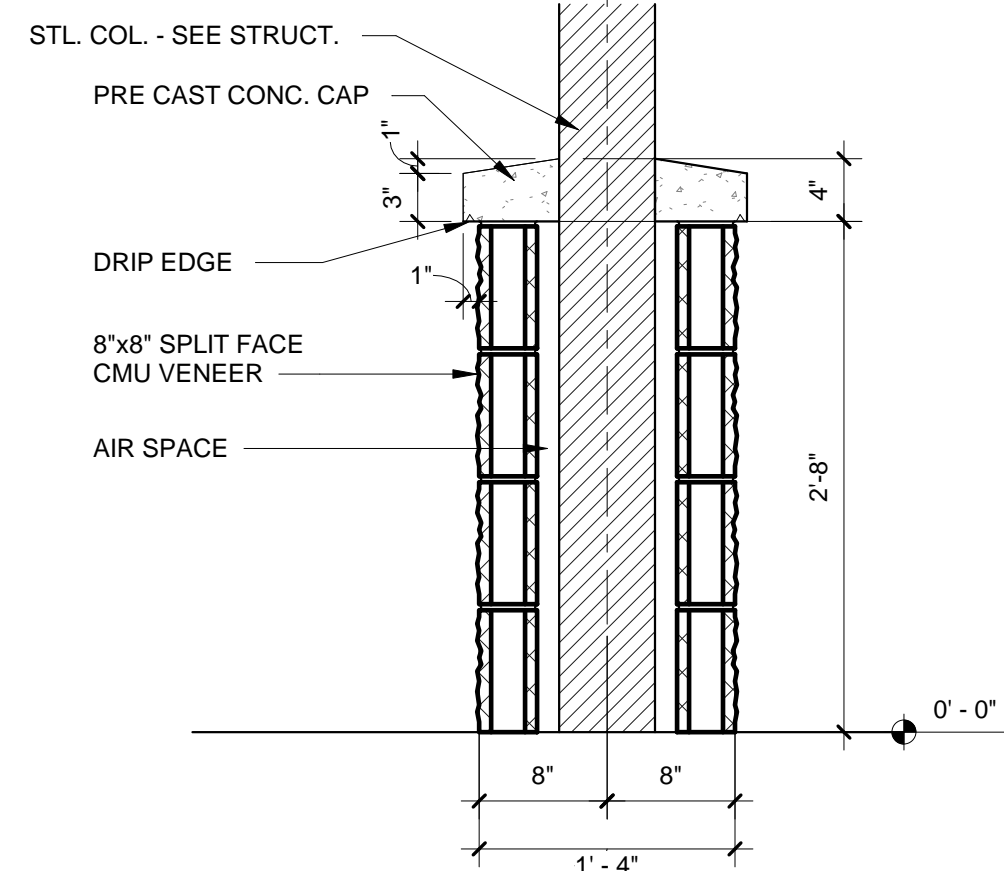
END OF ADDENDUM No. 3 - GRANT COUNTY AIRPORT TERMINAL RENOVATION



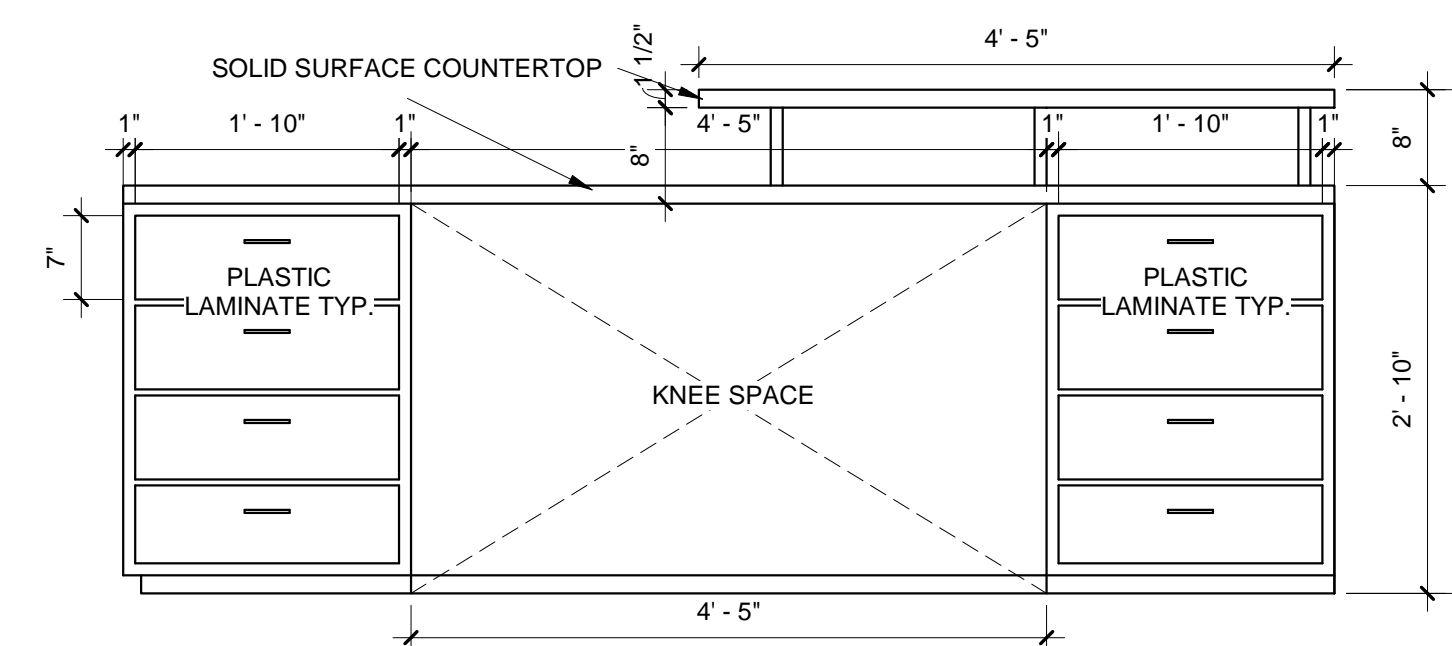
15 CEILING DETAIL
SCALE: 1 1/2" = 1'-0"



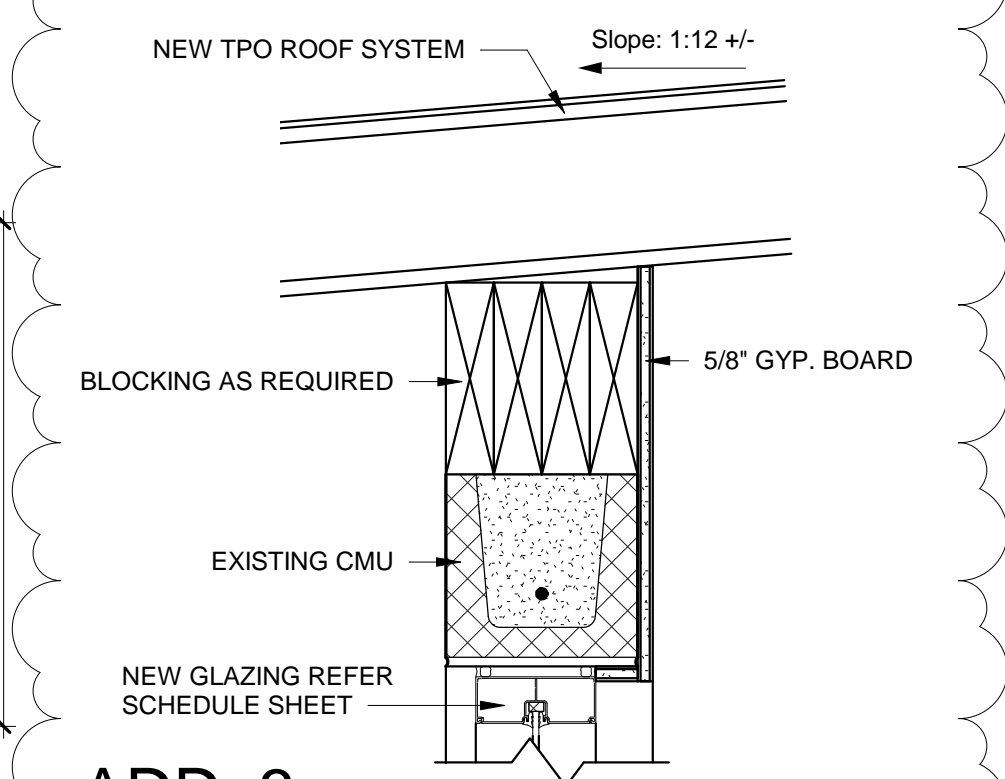
16 REVISED DETAIL 2
SCALE: 1 1/2" = 1'-0"



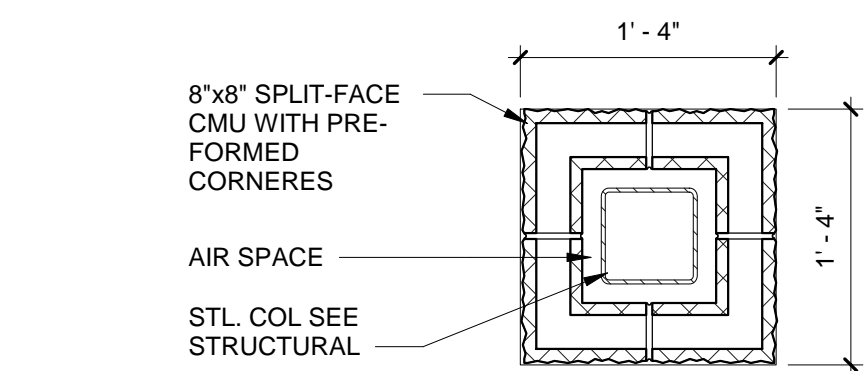
17 COLUMN DETAIL - SECTION
SCALE: 1" = 1'-0"



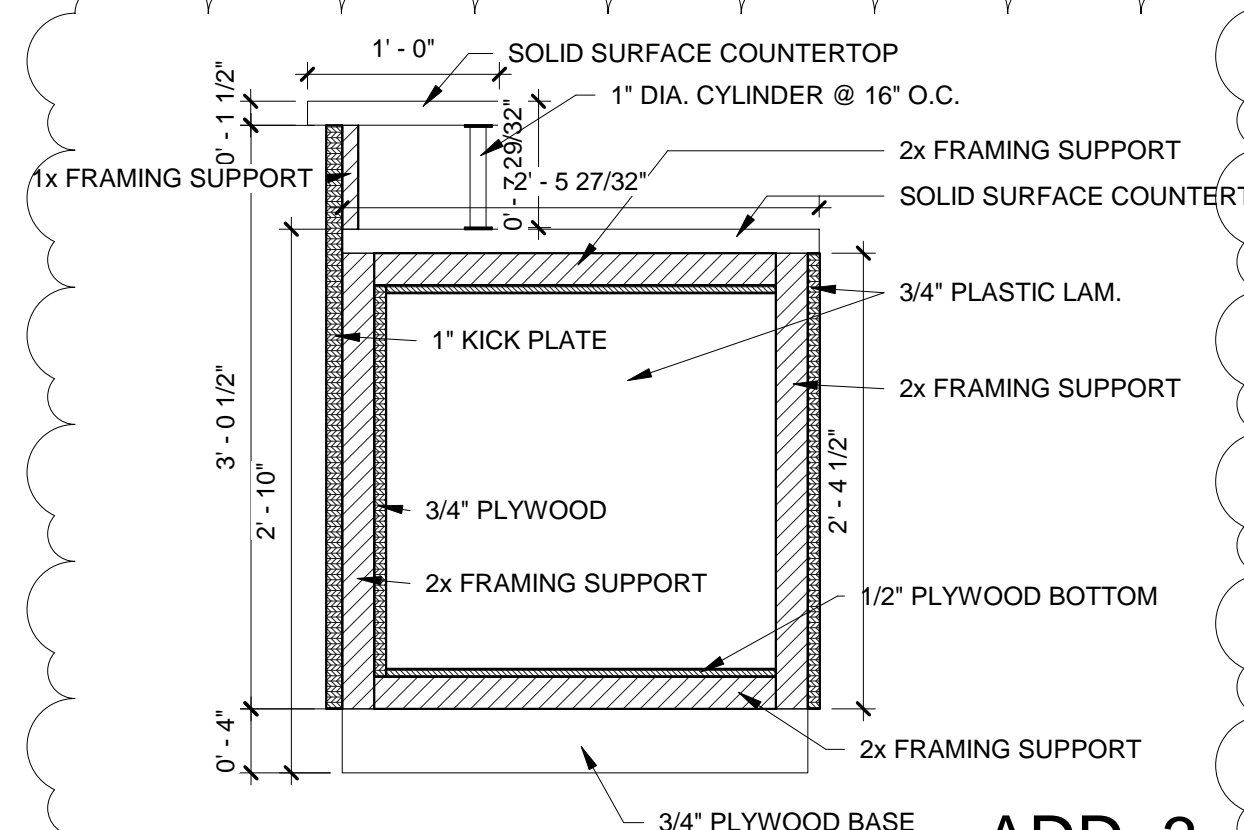
18 CASEWORK DETAIL
SCALE: 3/4" = 1'-0"



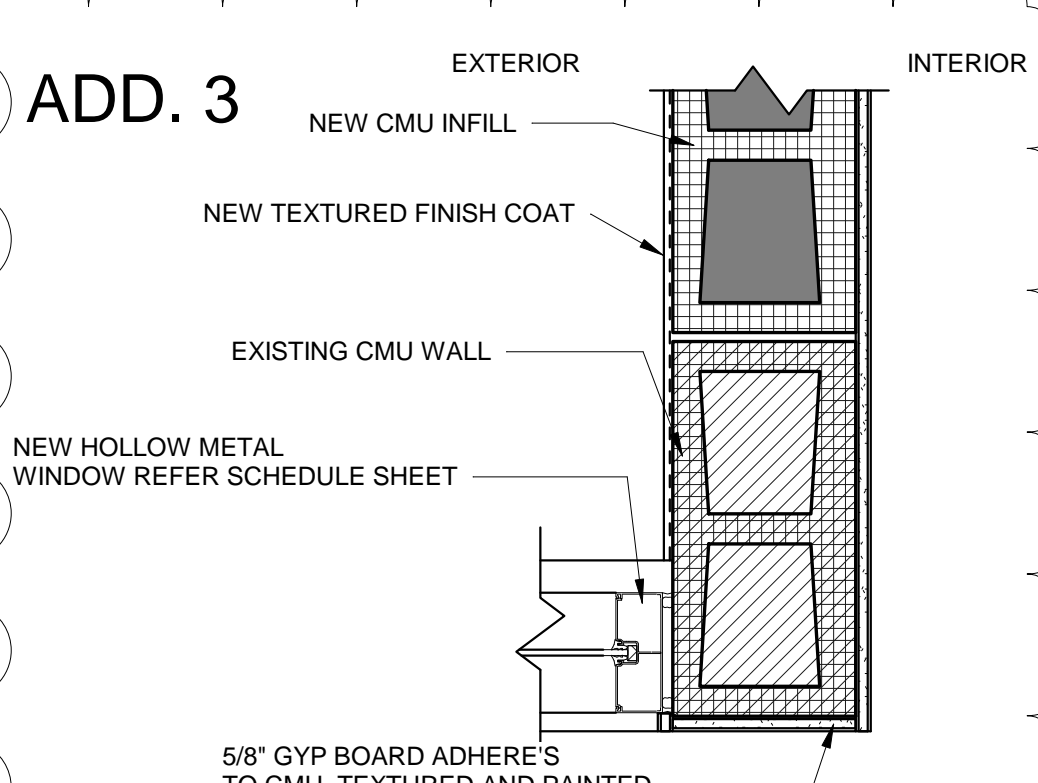
19 REVISED DETAIL 1
SCALE: 1 1/2" = 1'-0"



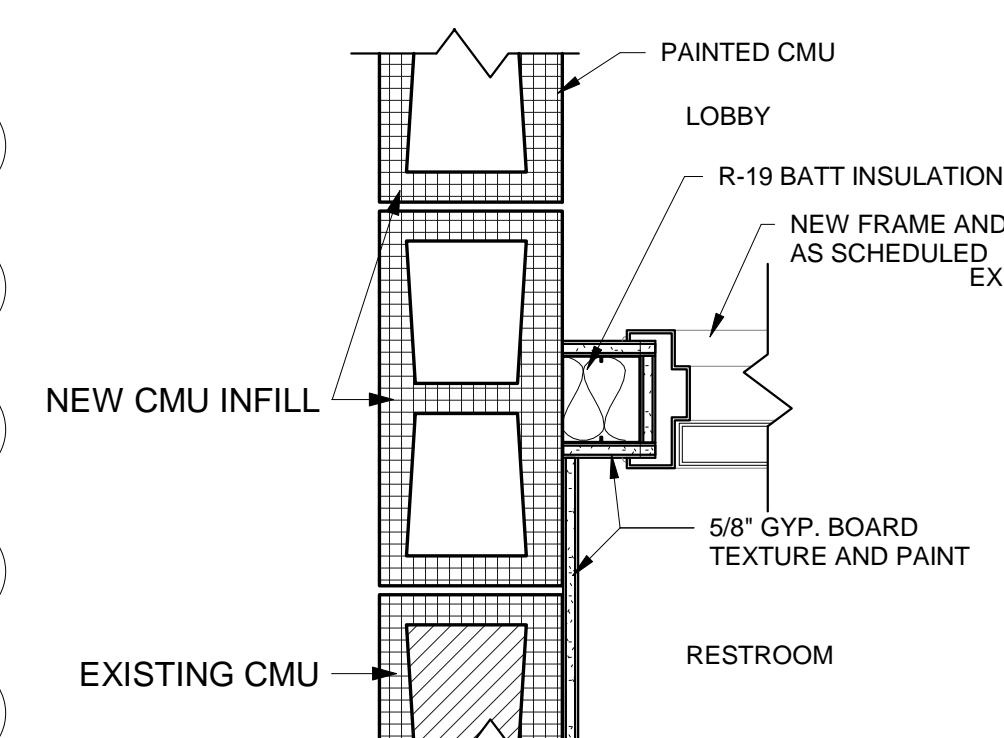
10 COLUMN DETAIL - PLAN
SCALE: 1" = 1'-0"



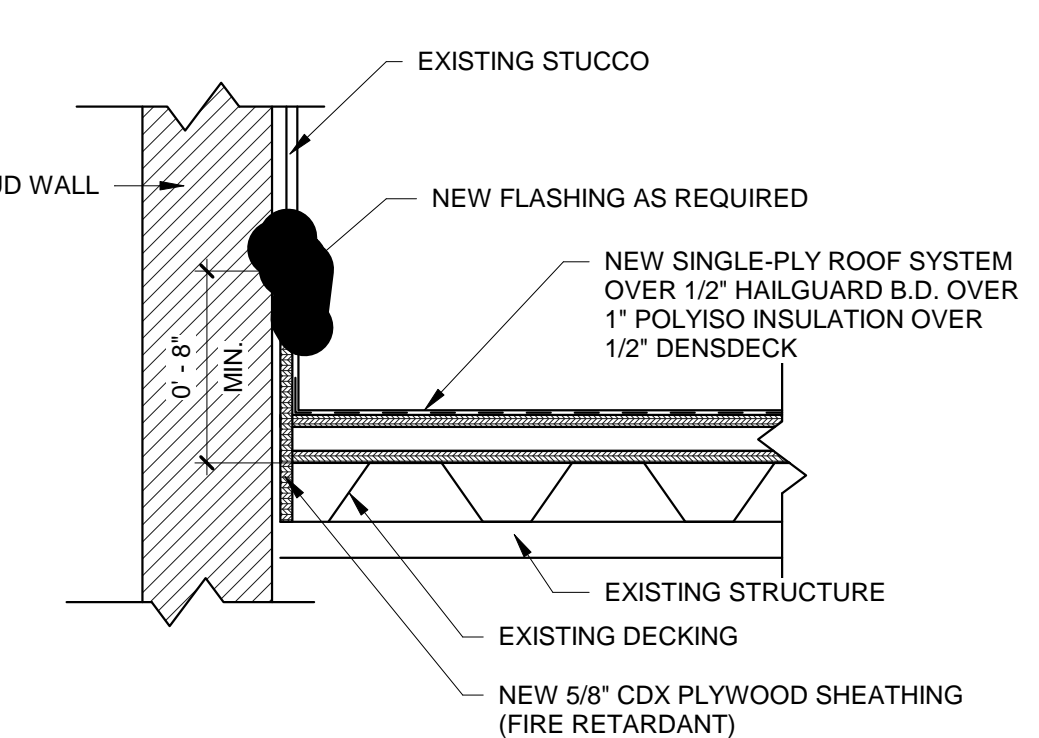
11 Counter section
SCALE: 1" = 1'-0"



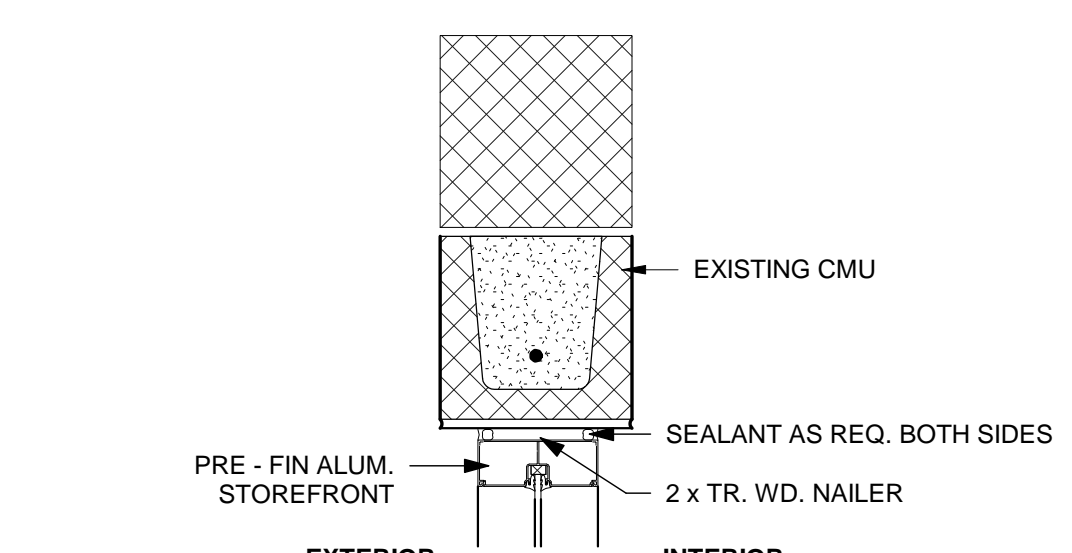
12 REVISED DETAIL 3
SCALE: 1 1/2" = 1'-0"



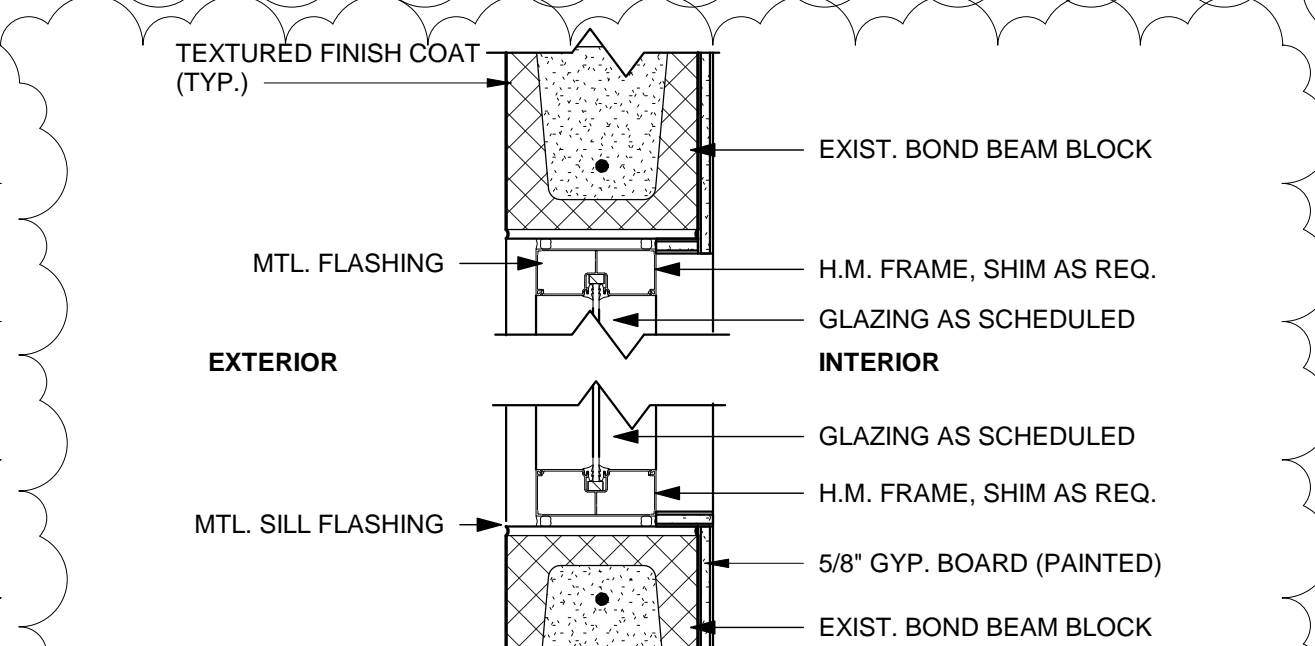
13 NEW WALL TO INFILL
SCALE: 1 1/2" = 1'-0"



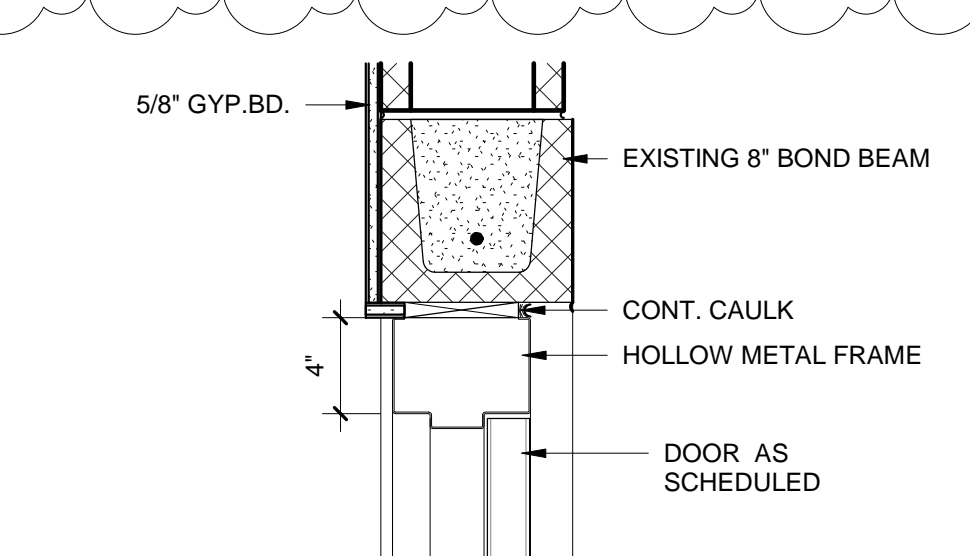
14 FLASHING DETAIL
SCALE: 1 1/2" = 1'-0"



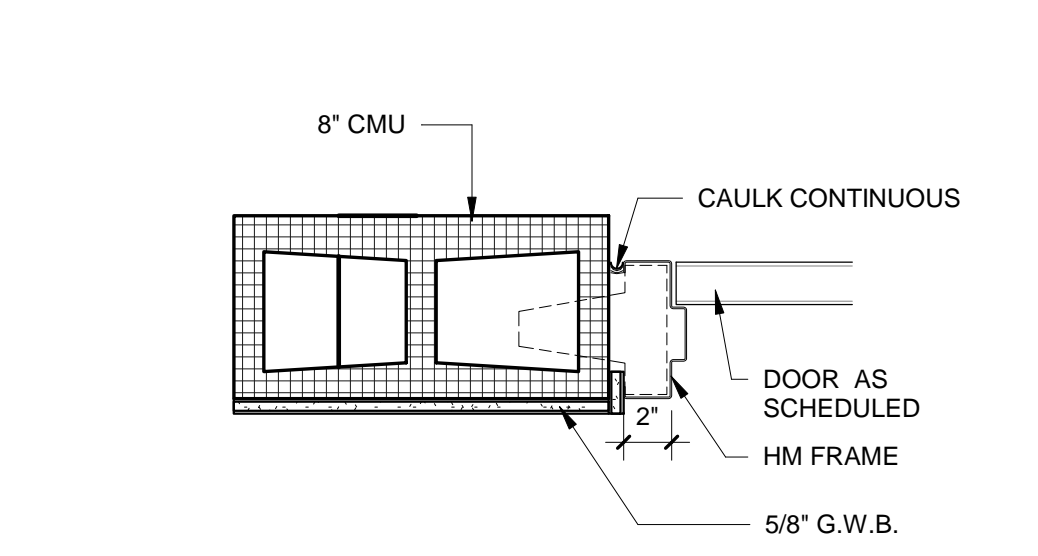
5 REVISED DETAIL 4
SCALE: 1 1/2" = 1'-0"



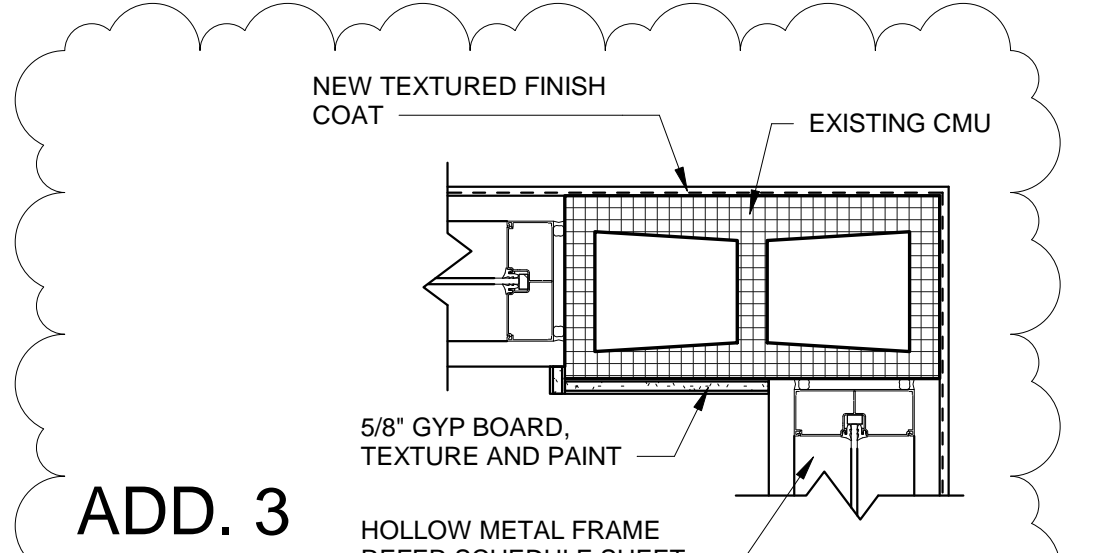
6 REVISED DETAIL 5
SCALE: 1 1/2" = 1'-0"



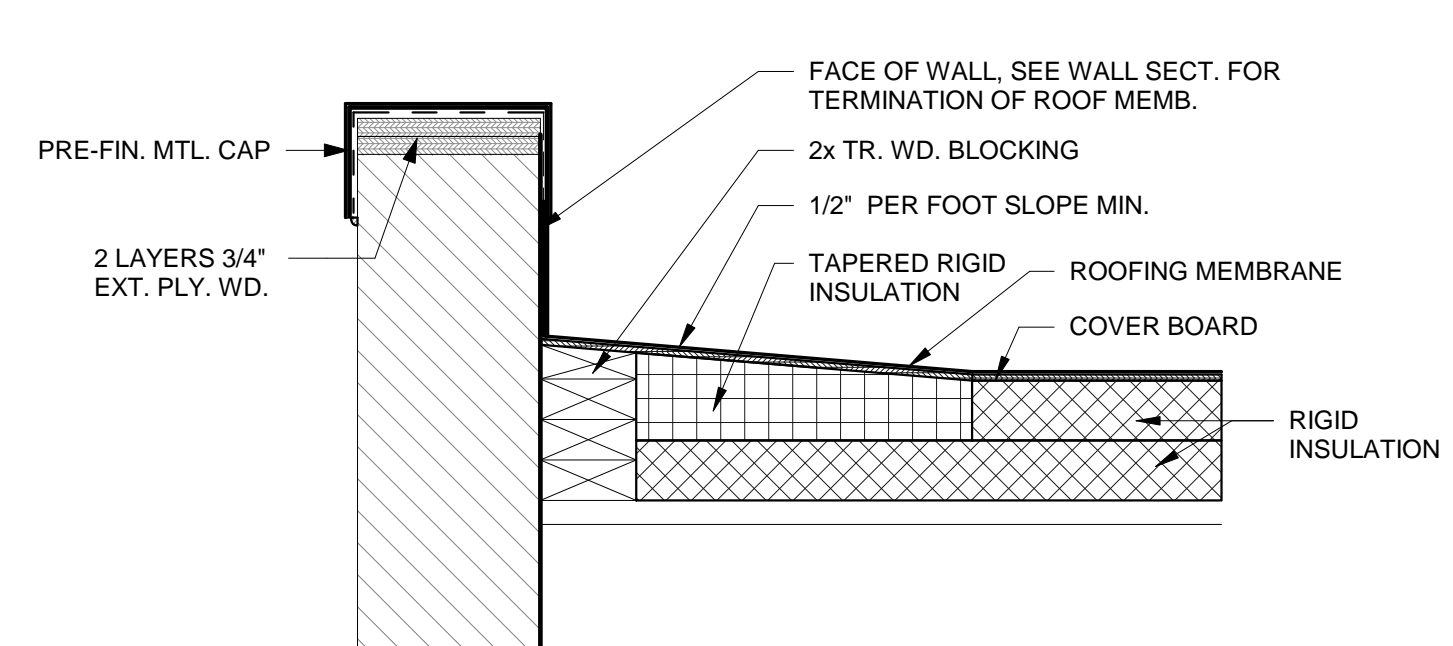
7 DOOR DETAIL - SECTION
SCALE: 1 1/2" = 1'-0"



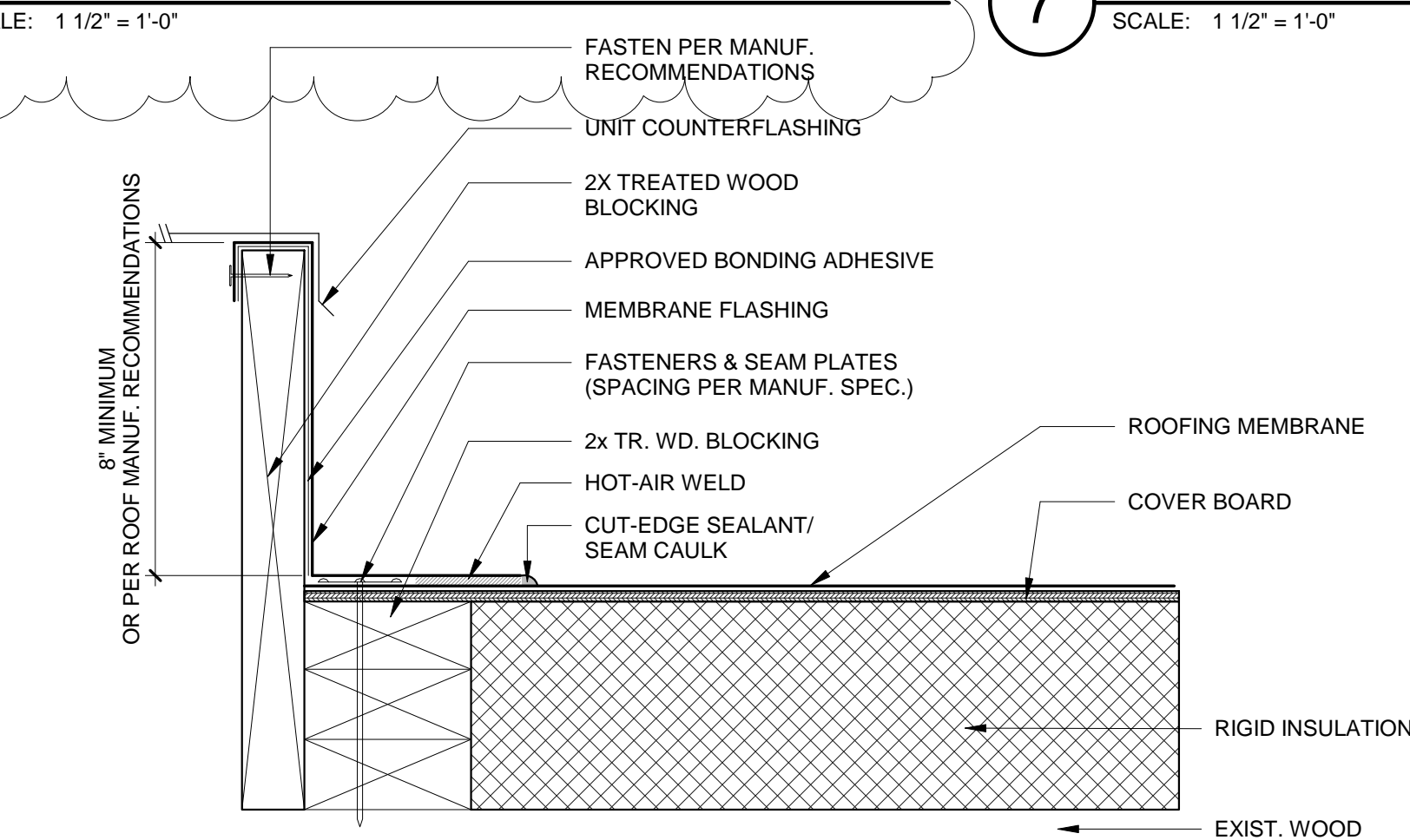
8 DOOR DETAIL - PLAN
SCALE: 1 1/2" = 1'-0"



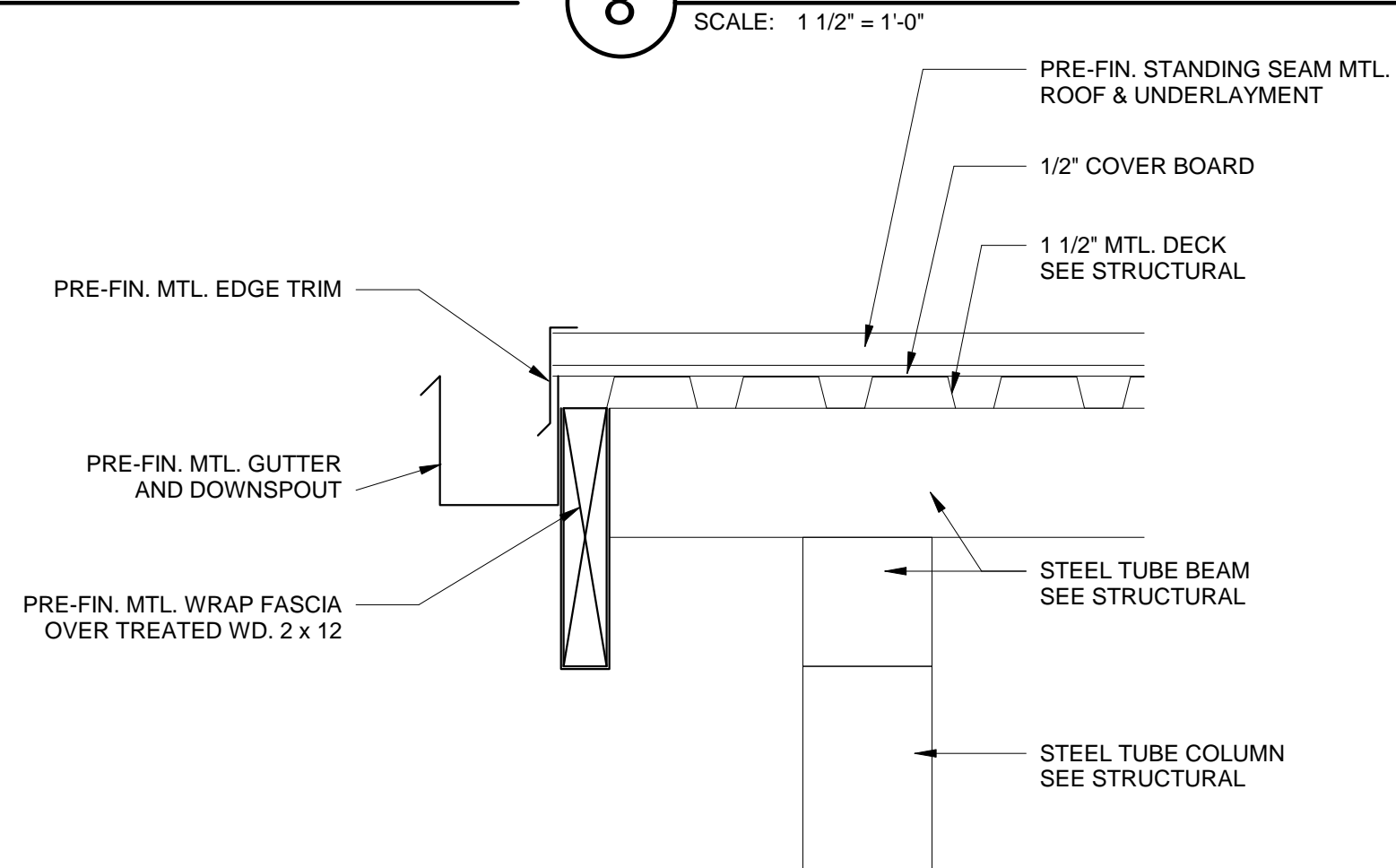
9 REVISED DETAIL 6
SCALE: 1 1/2" = 1'-0"



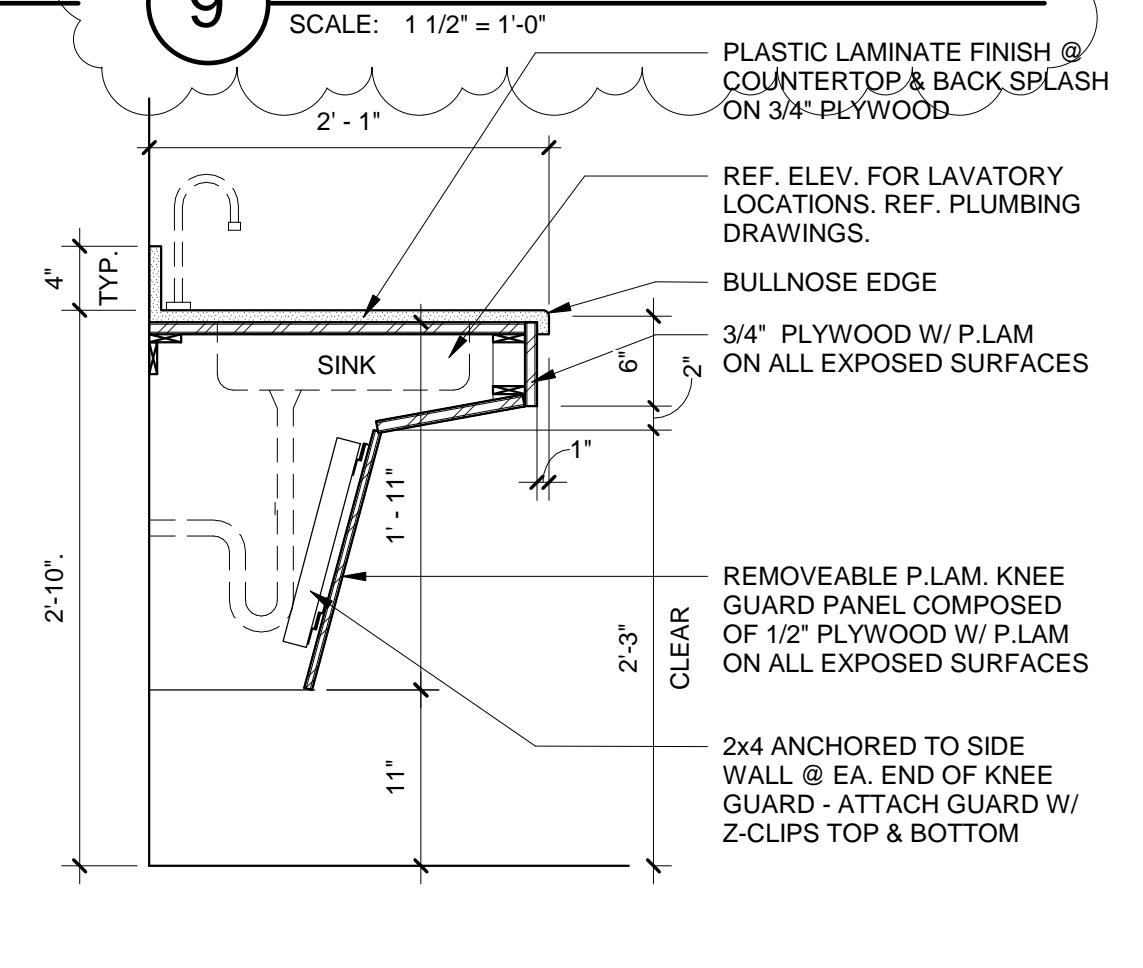
1 CRICKET DETAIL
SCALE: 1 1/2" = 1'-0"



2 CURB DTL FLASHING
SCALE: 3" = 1'-0"



3 GUTTER DETAIL @ CANOPY
SCALE: 1 1/2" = 1'-0"



4 SECTION @ SINK
SCALE: 1" = 1'-0"

ADDENDUM	DATE	DESCRIPTION
3	7/23/19	

ASA PROJECT NO.	Project Number
PROJECT NO.	19104L
DRAWN BY:	Author
CHECKED BY:	Checker
SHEET TITLE:	

DETAILS

SHEET NO. **A-501**
REV 1