

ADDENDUM NUMBER TWO
CHATTANOOGA PUBLIC LIBRARY – CHILLER AND BOILER IMPROVEMENTS
CONTRACT NO. L-18-001
JANUARY 28, 2019
CITY OF CHATTANOOGA, TENNESSEE

The following changes shall be made to the Request for Bids:

SPECIFICATIONS

Section 09 84 33 Sound-Absorbing Wall Panels is attached as part of this addendum.

DRAWINGS

Sheet A-104 Fourth Floor Plans (Partial) is re-issued as part of this addendum and describes revisions to the housekeeping pads, additions of wall absorbing panels, notes on anchoring to floor and graphic illustration of partitions already noted on drawing. Note: For bidding information about Kinetics Noise Control products, contact REA, Inc. (423) 710-2370. Equal products from other manufacturers will be accepted.

Sheet A-342 Housekeeping Pad Details is re-issued as part of this addendum and describes changes to the housekeeping pads.

Sheet M-300 HVAC Schedules

Pump Inertia Base Schedule

Add Note 4: "Vibration isolators shall be equipped with seismic-rated housing"

SECTION 09 84 33
SOUND-ABSORBING WALL PANELS

PART 1 GENERAL

1.01 SECTION INCLUDES

- A. Sound-absorbing wall panels, custom-fabricated.

1.02 REFERENCES

- A. ASTM International:
 - 1. ASTM C423 Standard Test Method for Sound Absorption and Sound Absorption Coefficients by the Reverberation Room Method.
 - 2. ASTM E84 Standard Test Method for Surface Burning Characteristics of Building Materials.
 - 3. ASTM E795 Standard Practices for Mounting Test Specimens During Sound Absorption Tests.

1.03 SYSTEM DESCRIPTION

- A. Performance Requirements
 - 1. Surface Burning Characteristics (ASTM E84)
 - a. Flamespread: 25 maximum.
 - b. Smoke Developed: 450 maximum.

1.04 SUBMITTALS

- A. General: Submit listed submittals in accordance with Conditions of the Contract and Division 1 Submittal Procedures Section.
- B. Product Data: Submit product data sheet, for specified products.
- C. Shop Drawings: Submit shop drawings showing layout, edge profiles and panel components, including anchorage, accessories, finish colors and textures.
- D. Samples: Submit selection and verification samples of finishes, colors and textures.
- E. Test Reports: Certified test reports showing compliance with specified performance requirements.
 - 1. Standard Systems: Submit certified copies of previous test reports substantiating performance of system in lieu of retesting.

1.05 DELIVERY, STORAGE, AND HANDLING

- A. General: Comply with Division 1 Product Requirements Section.
- B. Delivery: Deliver materials in manufacturer's original, unopened, undamaged containers with identification labels intact.
- C. Storage and Protection: Store materials protected from exposure to harmful environmental conditions and at temperature and humidity conditions recommended by the manufacturer.

1.06 PROJECT CONDITIONS

- A. Environmental Requirements: Do not install panels until wet work, such as concrete and plastering, is complete; the building is enclosed; and the temperature and relative humidity are stabilized at 60 - 80 degrees F (16 - 27 degrees C) and 35% MINIMUM RH and 55% MAXIMUM RH, respectively. All products constructed with wood or wood fiber content must be stored for at least 72 hours in the controlled environment specified herein prior to installation to allow the materials to stabilize.

PART 2 PRODUCTS

2.01 SOUND-ABSORBING WALL PANELS

- A. Manufacturer: Basis of Design: Kinetics Noise Control.
 - 1. Contact: PO Box 655, 6300 Irelan Place, Dublin, OH 43017; Telephone: (614) 889-0480; Fax: (614) 889-0540; E-mail: intsales@kineticsnoise.com; Web site:

2.02 MANUFACTURED UNITS

- A. S4 Absorber Panels:
 - 1. Thickness: 1 inch.
 - 2. Size: As indicated on the drawings, to a maximum 48 inches x 120 inches (1219mm x 3048 mm).
 - 3. Construction: 3 pcf (48 kg/m³) density fiberglass core encapsulated and sealed with fiberglass reinforced reflective film. Color: [White] [Aluminized silver].
 - 4. Sound Absorption (ASTM C423): Noise Reduction Coefficient as follows:
 - a. 1 inch (25.4 mm) panel: 0.75, minimum.
 - b. 2 inch (51 mm) panel: 0.95, minimum.
 - 5. Mounting Accessories: S4 brackets - top and bottom

PART 3 EXECUTION

3.01 MANUFACTURER'S INSTRUCTIONS

- A. Compliance: Comply with manufacturer's product data, including product technical bulletins, product catalog installation instructions and product carton instructions for installation.
- B. Install on "J" clips and with construction adhesive.

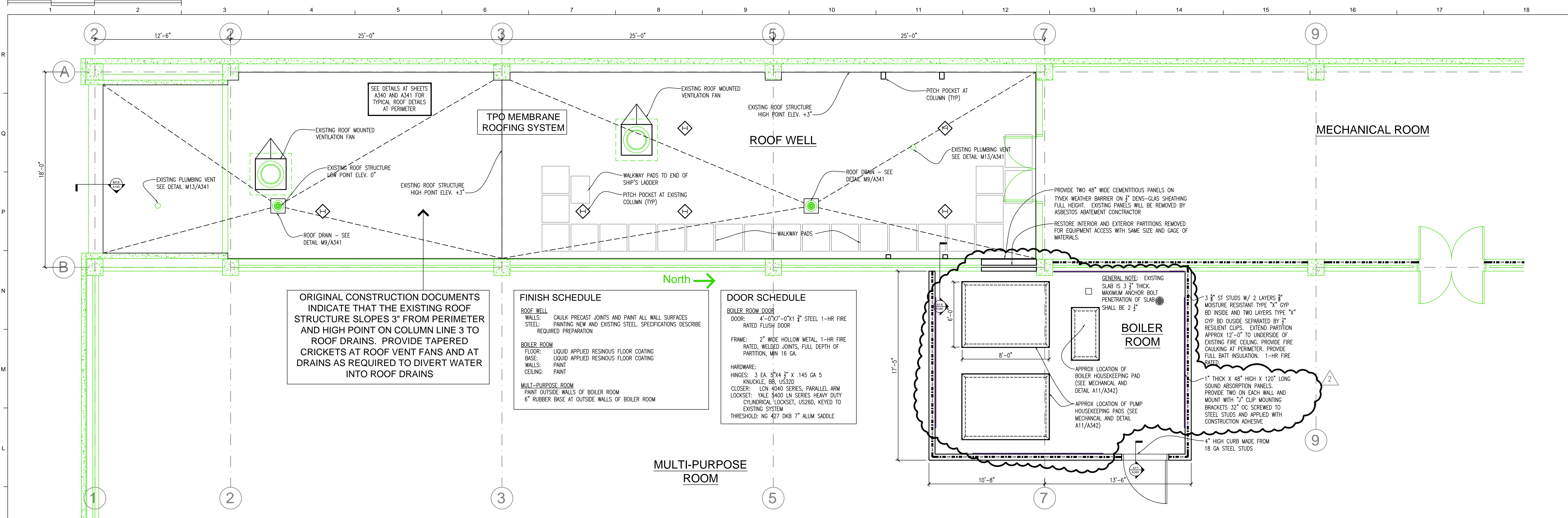
3.02 EXAMINATION

- A. Site Verification of Conditions: Verify that substrate conditions, which have been previously installed under other sections, are acceptable for product installation in accordance with manufacturer's instructions.

3.03 CLEANING

- A. Follow manufacturer's instructions for cleaning panels soiled during installation. Replace panels that cannot be cleaned to as new condition.
- B. Keep site free from accumulation of waste and debris.

END OF SECTION



ORIGINAL CONSTRUCTION DOCUMENTS INDICATE THAT THE EXISTING ROOF STRUCTURE SLOPES 3" FROM PERIMETER AND HIGH POINT ON COLUMN LINE 3 TO ROOF DRAINS. PROVIDE TAPERED CRICKETS AT ROOF VENT FANS AND AT DRAINS AS REQUIRED TO DIVERT WATER INTO ROOF DRAINS

FINISH SCHEDULE

ROOF WELL
 WALLS: CAULK PRECAST JOINTS AND PAINT ALL WALL SURFACES
 STEEL: PAINTING NEW AND EXISTING STEEL. SPECIFICATIONS DESCRIBE REQUIRED PREPARATION

BOILER ROOM
 FLOOR: LIQUID APPLIED RESINOUS FLOOR COATING
 BASE: LIQUID APPLIED RESINOUS FLOOR COATING
 WALLS: PAINT
 CEILING: PAINT

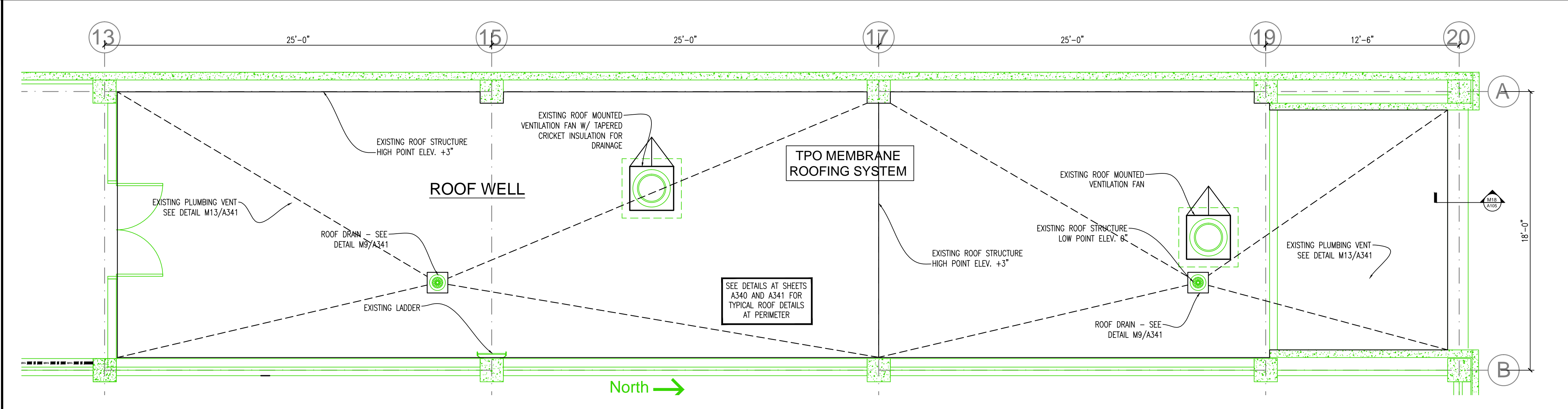
MULTI-PURPOSE ROOM
 PAINT OUTSIDE WALLS OF BOILER ROOM
 6" RUBBER BASE AT OUTSIDE WALLS OF BOILER ROOM

DOOR SCHEDULE

BOILER ROOM DOOR
 DOOR: 4'-0"x7'-0"x1 1/2" STEEL 1-HR FIRE RATED FLUSH DOOR
 FRAME: 2" WIDE HOLLOW METAL, 1-HR FIRE RATED, WELDED JOINTS, FULL DEPTH OF PARTITION, MIN 16 GA.
 HARDWARE: 3 EA. 5/16" X 1/4" X .145 GA 5 KNUCKLE BR. US200
 CLOSER: LCN 4040 SERIES, PARALLEL ARM
 LOCKSET: YALE 5400 LN SERIES HEAVY DUTY CYLINDRICAL LOCKSET, US260, KEYED TO EXISTING SYSTEM
 THRESHOLD: NS 427 DKB 7" ALUM SADDLE

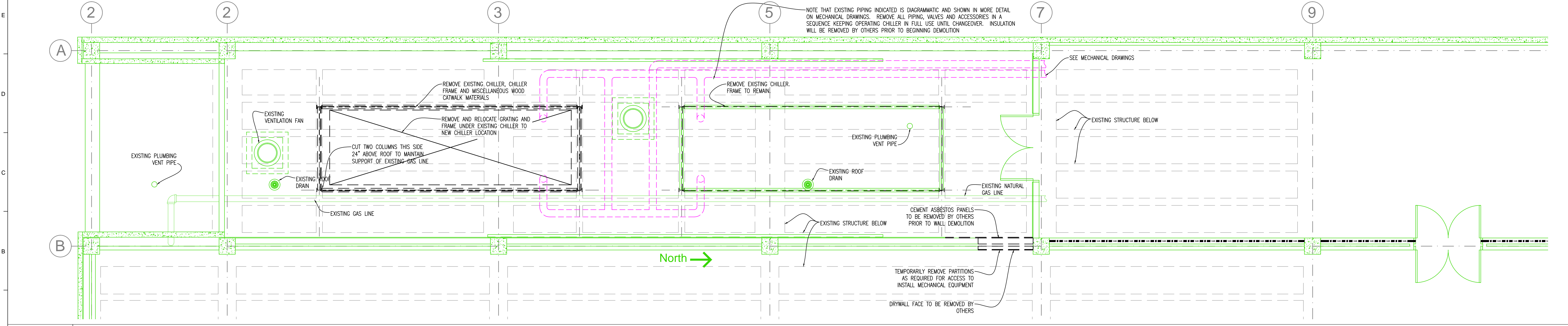
J1 Fourth Floor South HVAC Roof Well Plan and Mechanical Room

Scale: 1/4" = 1'-0"



F5 Fourth Floor North Roof Well Plan (Alternate No. 1)

Scale: 1/4" = 1'-0"



A1 Fourth Floor Demolition Plan - (South Roof Well)

Scale: 1/4" = 1'-0"



**Public Library
 Chiller and
 Boiler
 Improvements**

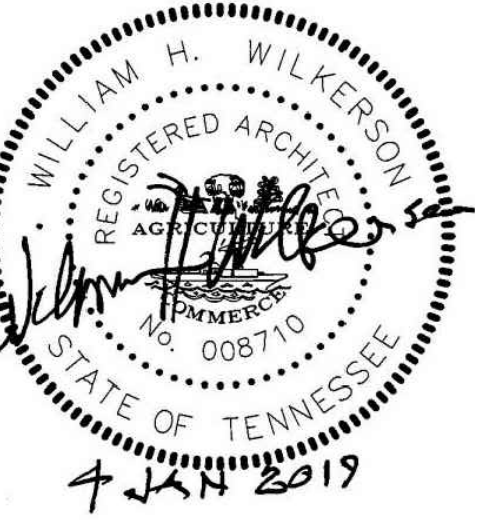
1001 Broad Street
 Chattanooga, TN 37402

Date: January 4, 2019
 Drawn: WHW
 City Project L-018-001 DHW #2180

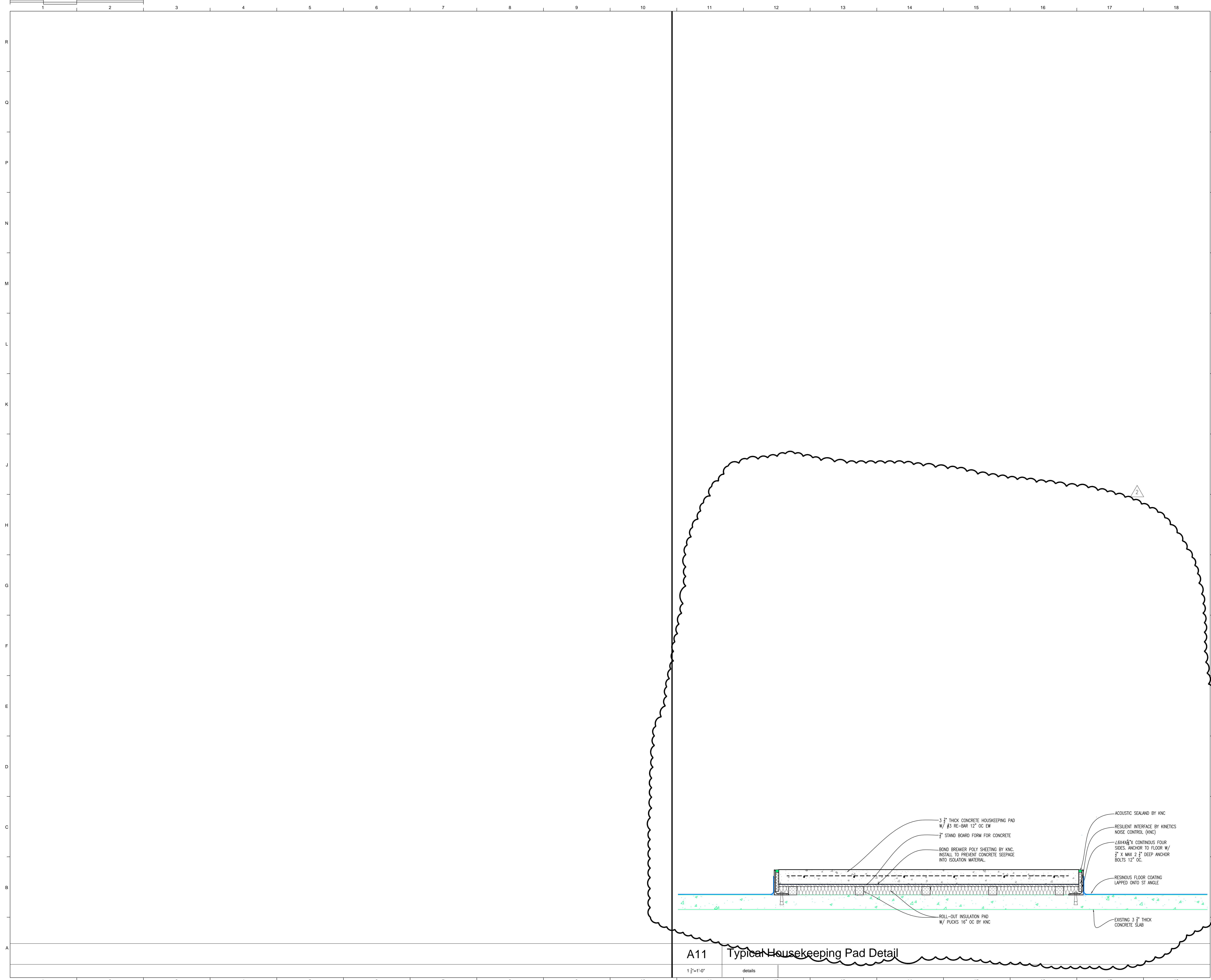
Revisions

| | | |
|---|------------|-----------|
| 1 | ADDENDUM 1 | 23 JAN 19 |
| 2 | ADDENDUM 2 | 28 JAN 19 |

ALL DRAWINGS AND WRITTEN MATERIAL CONSTITUTE ORIGINAL WORK OF THE ARCHITECT AND MAY NOT BE REPRODUCED, COPIED, OR DISCLOSED WITHOUT THE ARCHITECT'S CONSENT.
 © 2019 DH&W ARCHITECTS. ALL RIGHTS RESERVED.
 NOTE THAT THESE DRAWINGS ARE PRODUCED IN COLOR. REFER TO COLOR DRAWINGS FOR CLARIFICATION OF NEW AND EXISTING CONDITIONS.



Title:
**Fourth Floor Plans
 (Partial)**



**Public Library
Chiller and
Boiler
Improvements**

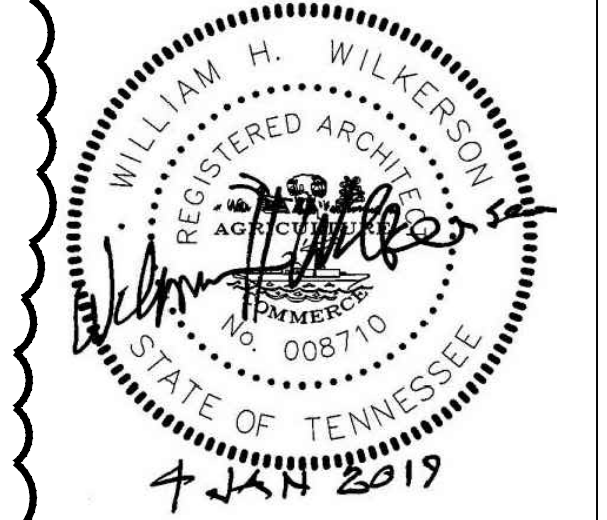
1001 Broad Street
Chattanooga, TN 37402

Date: January 4, 2019
Drawn: WHW
City Project L-018-001 DHW #2180

Revisions

| | | |
|---|------------|-----------|
| 1 | ADDENDUM 1 | 23 JAN 19 |
| 2 | ADDENDUM 2 | 28 JAN 19 |

ALL DRAWINGS AND WRITTEN MATERIAL CONSTITUTE ORIGINAL WORK OF THE ARCHITECT AND MAY NOT BE REPRODUCED, USED, OR DISCLOSED WITHOUT CONSENT OF THE ARCHITECT.
©2019 DHW ARCHITECTS. ALL RIGHTS RESERVED.
NOTE THAT THESE DRAWINGS ARE PRODUCED IN COLOR. REFER TO COLOR DRAWINGS FOR CLARIFICATION OF NEW OR EXISTING CONDITIONS.



Title:
**Housekeeping Pad
Details**

Sheet No.
A-342