

ADDENDUM NUMBER ONE

October 21, 2019

PIN 125590.00 Canada Road Pedestrian and Bike Trail

Lakeland, Tennessee

The following additions, deletions and/or revisions shall be made part of the Plans dated September 30, 2019 of the referenced project. This addendum shall have precedence over the plans and specifications on all items listed and described herein, however, it shall not change the intent and requirements of the plans and specifications for any item not specifically mentioned.

ITEM NO. 1

REFERENCE PLANS: SHEET 2 - Estimated Roadway Quantities
footnotes for the column on the right side of the page are in error. Footnote #3 in the right column should reference Item 740.-10.03, Geotextile (Type III) (Erosion Control). Footnote #2 in that column should reference Item 920-11, Steel backed timber guardrail, Type A, Item 920-11.04, Terminal Anchor Type SBT, FAT – 30 Approach End, and Item 920-12.04, Terminal Anchor Type SBT, FAT – 30 Departure End. See attached Sheet 2 – Estimated Roadway Quantities, which replaces the sheet originally issued.

ITEM NO. 2

REFERENCE PLANS: SHEET L-1, LIGHTING PLAN

1. The key note “SEE DETAIL 9 / SHEET L-1” is in error. There is no lighting in the area referenced. This key note should be ignored.
2. Clarification of solar bollard operation. The solar bollards are intended to provide illumination of the intersections for pathway users, casting a wide distribution pattern of light. Minimum required operation is automatic lighting from dusk to dawn. The Owner will select the factory-programmed option for operation of the bollards. Optional motion sensors to provide a default dim illumination level, with pathway motion sensor activation for bright illumination level, is desirable but not required.
3. Lighting plans have been added to illustrate electrical connections for the proposed signs. This sheet replaces Sheet L-1, Lighting Plan originally issued.

ITEM NO. 3

REFERENCE PLANS: NEW SHEET L-2, ELECTRICAL DETAILS

This sheet provides electrical details for the proposed signs.

END OF ADDENDUM NO. 1

| TYPE | YEAR | PROJECT NO. | SHEET NO. |
|--------|------|---------------|-----------|
| CONST. | 2019 | 79LPLM-F3-554 | 2 |
| | | | |
| | | | |

ESTIMATED ROADWAY QUANTITIES

| ITEM NO. | DESCRIPTION | UNIT | QUANTITY 79LPLM-F3-556 |
|-------------|--|------|---------------------------|
| 202-01.56 | Removal of Structures and Obstructions (Guardrail) | LS | 1 |
| 202-03 | Removal of Rigid Pavement, Sidewalk, Etc. | SY | 320 |
| 202-03.01 | Removal of Asphalt Pavement | SY | 450 |
| 202-08.15 | Removal of Curb and Gutter | LF | 400 |
| ③ 203-01 | Road & Drainage Excavation (Unclassified) | CY | 8 |
| 203-10 | Embankment (Compacted in Place) | CY | 600 |
| ③ 209-03.21 | Filter Sock (12 inch) | LF | 50 |
| ③ 209-05 | Sediment Removal | CY | 10 |
| ③ 209-08.02 | Temporary Silt Fence (With Backing) | LF | 900 |
| ③ 209-09.43 | Curb Inlet Protection (Type 4) | EA | 8 |
| ③ 209-40.34 | Catch Basin Protection (Type E) | EA | 6 |
| ① 303-01 | Mineral Aggregate, Type A Base, Grading D | TON | 319 |
| ③ 303-10.01 | Mineral Aggregate, Size 57 | TON | 368 |
| ① 307-01.08 | Asphalt Concrete Mix(PG64-22) (BPMB-HM) Grading B-M2 | TON | 92 |
| ① ④ 402-02 | Aggregate for Cover Material (PC) | TON | 3 |
| ① 403-01 | Bituminous Materials for Tack Coat (TC) | TON | 0.3 |
| 407-20.05 | Saw-Cutting Asphalt Pavement | LF | 1,990 |
| ① 411-01.07 | ACS Mix (PG64-22) Grading E Shoulder | TON | 43 |
| 501-01.03 | Portland Cement Concrete Pavement, Plain (10") | SY | 602 |
| 501-03.02 | Concrete Shoulders | SY | 113 |
| 502-04.03 | Transverse Tie Bars | EA | 216 |
| 604-01.20 | Box Tube Safety Rail | LF | 170 |
| 604-12.01 | Concrete Imprinting | SF | 5,410 |
| 604-12.03 | Concrete Pigment | LB | 4,500 |
| 607-03.02 | 18" Concrete Pipe Culvert (Class III) | LF | 223 |
| 607-05.02 | 24" Concrete Pipe Culvert (Class III) | LF | 465 |
| 611-07.01 | Class A Concrete (Pipe Endwalls) | C.Y. | 3 |
| 611-07.02 | Steel Bar Reinforcement (Pipe Endwalls) | LB. | 282 |
| ① 611-12.01 | Catch Basin, Type 12, 0'-4' Depth | EA | 4 |
| ① 611-12.02 | Catch Basin, Type 12, 4'-8' Depth | EA | 2 |
| ① 611-14.02 | Catch Basin, Type 14, 4'-8' Depth | EA | 1 |
| 701-01.01 | Concrete Sidewalk (4") | SF | 8,567 |
| 701-02.03 | Concrete Curb Ramp | SF | 850 |
| 702-01 | Concrete Curb | CY | 11 |
| 702-03 | Concrete Combined Curb and Gutter | CY | 157 |
| 708-03.10 | Sign Walls | EA | 2 |
| ③ 709-05.05 | Machined Rip-Rap (Class A-3) | TON | 50 |
| 709-05.06 | Machined Rip-Rap (Class A-1) | TON | 35 |
| 712-01 | Traffic Control | LS | 1 |
| 712-04.01 | Flexible Drums (Channelizing) | EA | 60 |
| 712-06 | Signs (Construction) | S.F. | 259 |
| 712-07.03 | Temporary Barricades (Type III) | L.F. | 96 |
| 712-08.03 | Arrow Board (Type C) | EA | 2 |
| 713-11.04 | Surface Mnt Breakaway Base for Sign Post | EA | 7 |
| 713-11.05 | Square Tube Sign Support | LB | 355 |
| 713-13.03 | Flat sheet aluminum signs (0.100" thick) | SF | 38 |
| 716-02.07 | Plastic pavement marking (24" barrier line) | LF | 128 |

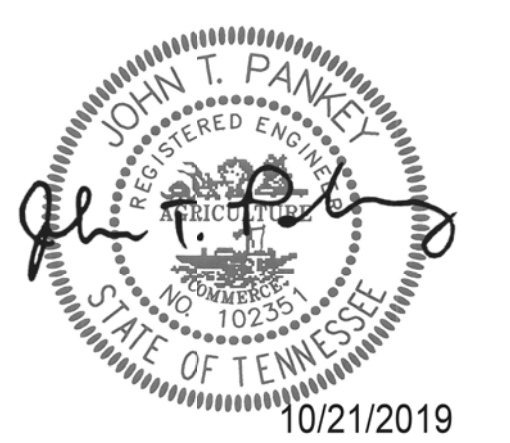
ESTIMATED ROADWAY QUANTITIES

| ITEM NO. | DESCRIPTION | UNIT | QUANTITY 79LPLM-F3-556 |
|-------------|---|------|---------------------------|
| 716-08.32 | Hydroblast Removal of Pavement Marking (Crosswalks) | LF | 1,345 |
| 716-12.06 | Enhanced flat thermal pavement marking (8" line) | LF | 1,214 |
| 717-01 | Mobilization | LS | 1 |
| ③ 740-10.03 | Geotextile (Type III) (Erosion Control) | SY | 86 |
| 797-07.04 | 48" Manhole in 8-10' depth | EA | 3 |
| 801-01 | Seeding (with mulch) | UNIT | 30 |
| 801-03 | Water (seeding and sodding) | MG | 71 |
| 802-01.10 | Trees - Emerald Sentinal Red Cedar - 5-6' ht. | EA | 15 |
| 802-01.11 | Trees - Keteleeri Chinese Juniper - 5-6' ht. | EA | 23 |
| 802-01.12 | Trees - Shantung Maple - 2.5" Cal. | EA | 48 |
| 802-01.13 | Trees - Teddy Bear Magnolia - 5-6' ht. | EA | 3 |
| 802-03.01 | Shrubs - Green Mound Juniper - 18" spr. | EA | 56 |
| 802-03.02 | Shrubs - Hameln Fountain Grass - 5 gal. | EA | 24 |
| 802-03.03 | Shrubs - Sweetspire - 18" spr. | EA | 58 |
| 802-04.01 | Groundcover - Blue Pacific Juniper - 18" spr. | SY | 19 |
| 802-04.02 | Groundcover - Happy Returns Daylily - 1 gal | SY | 71 |
| 802-05 | Water (Plant Establishment) | M.G. | 30 |
| 802-05.03 | Refillable Drip Irrigation Flexible Bag | EA | 89 |
| 803-01 | Sodding (New Sod) | SY | 1,050 |
| 805-01.68 | 2" wood mulch | CY | 12 |
| 920-10.04 | Decorative solar bollards | EA | 20 |
| ② 920-11 | Steel backed timber guardrail, Type A | LF | 510 |
| ② 920-11.04 | Terminal Anchor Type SBT, FAT - 30 Approach End | EA | 2 |
| ② 920-12.04 | Terminal Anchor Type SBT, FAT - 30 Departure End | EA | 2 |
| 920-13 | Pedestrian Timber Boardwalk | L.F. | 110 |
| 920-13.04 | Removable Bollard | EA | 2 |

FOOTNOTES:

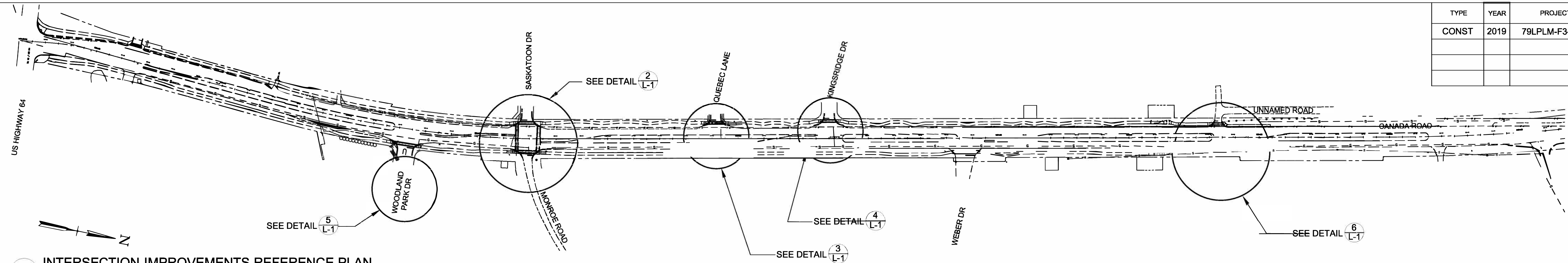
1. SEE TABULATED QUANTITIES ON SHT. 2E.
2. SEE DETAIL SHTS. 2F AND 2F1.
3. TO BE USED FOR EROSION CONTROL.
4. ITEM TO BE USED AS DIRECTED BY THE ENGINEER.

REVISIONS:
DATE: 10/21/2019
CORRECTED FOOTNOTES

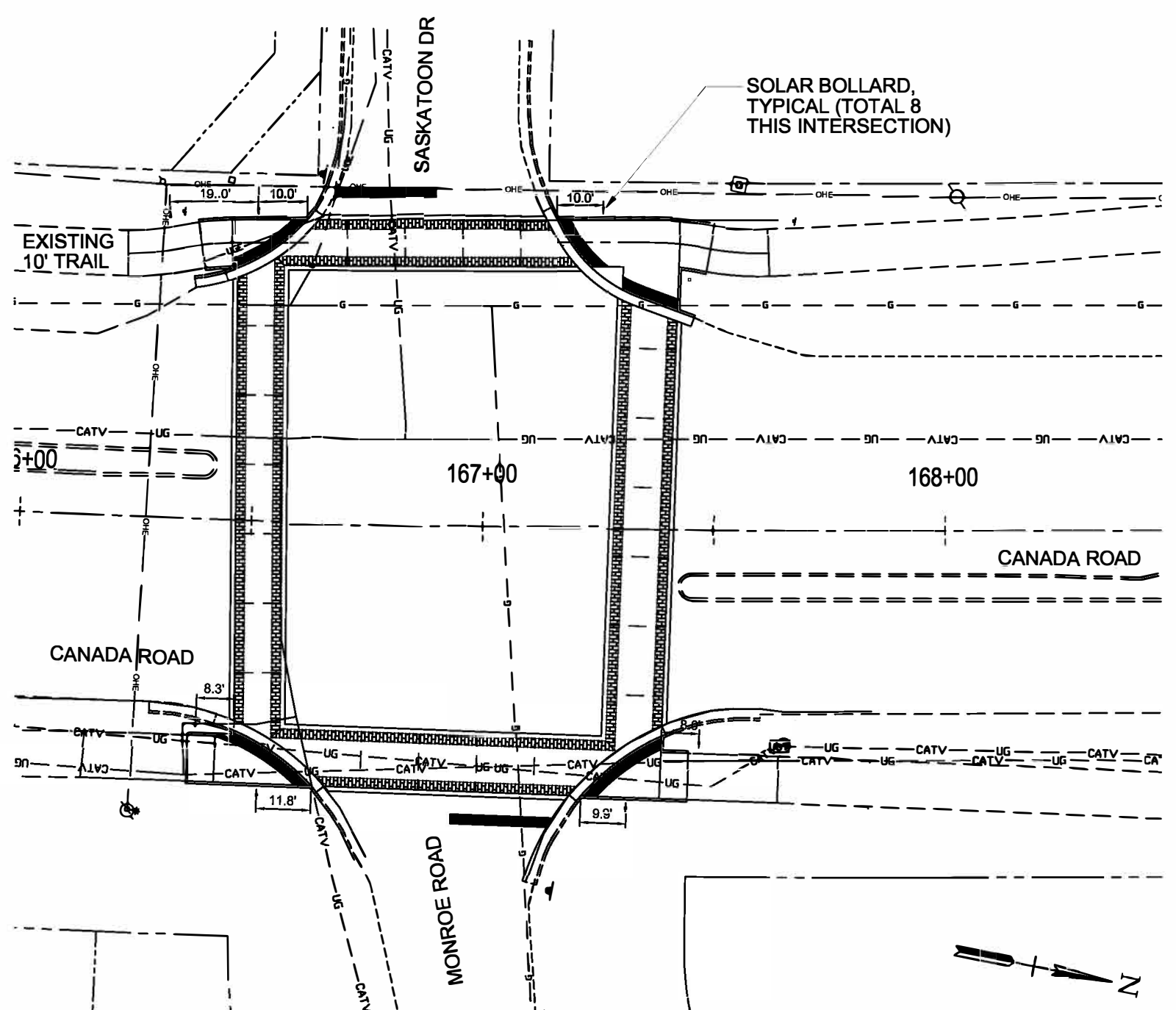


ESTIMATED
ROADWAY
QUANTITIES

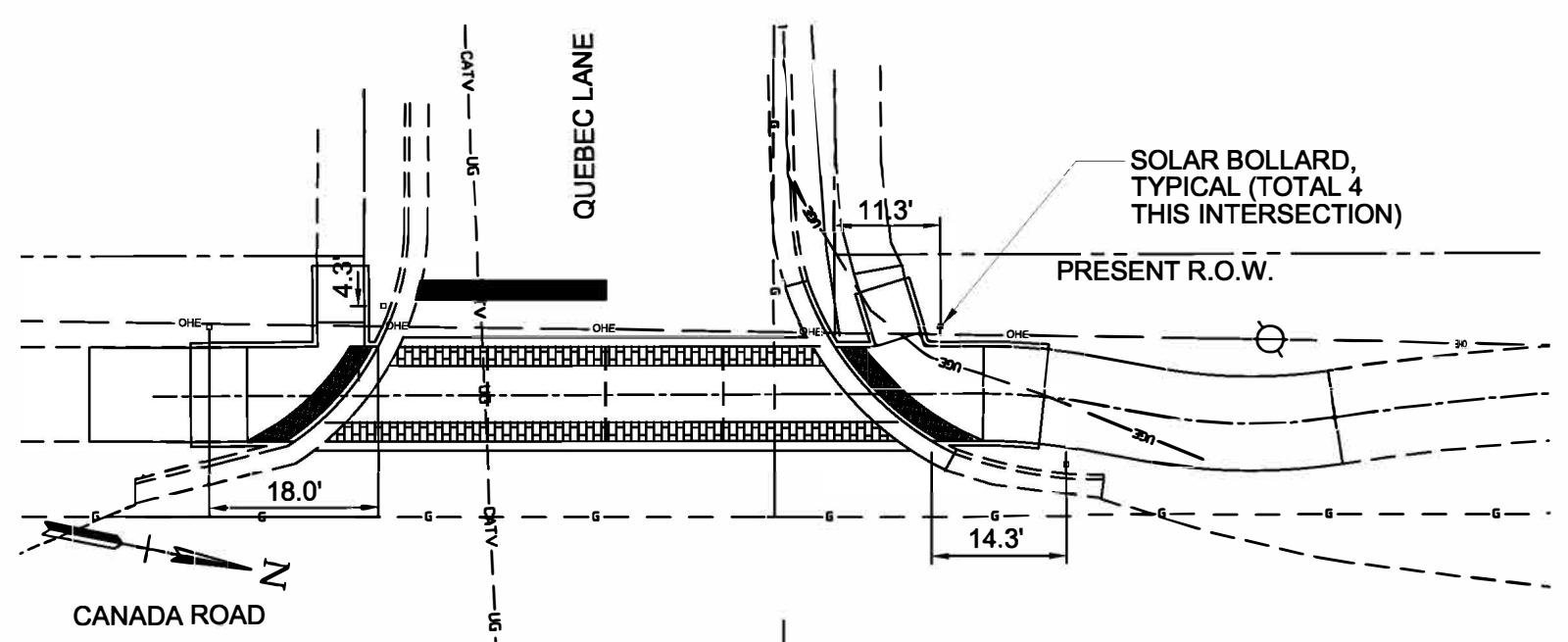
| TYPE | YEAR | PROJECT NO. | SHEET NO. |
|-------|------|---------------|-----------|
| CONST | 2019 | 79LPLM-F3-554 | L-1 |
| | | | |
| | | | |



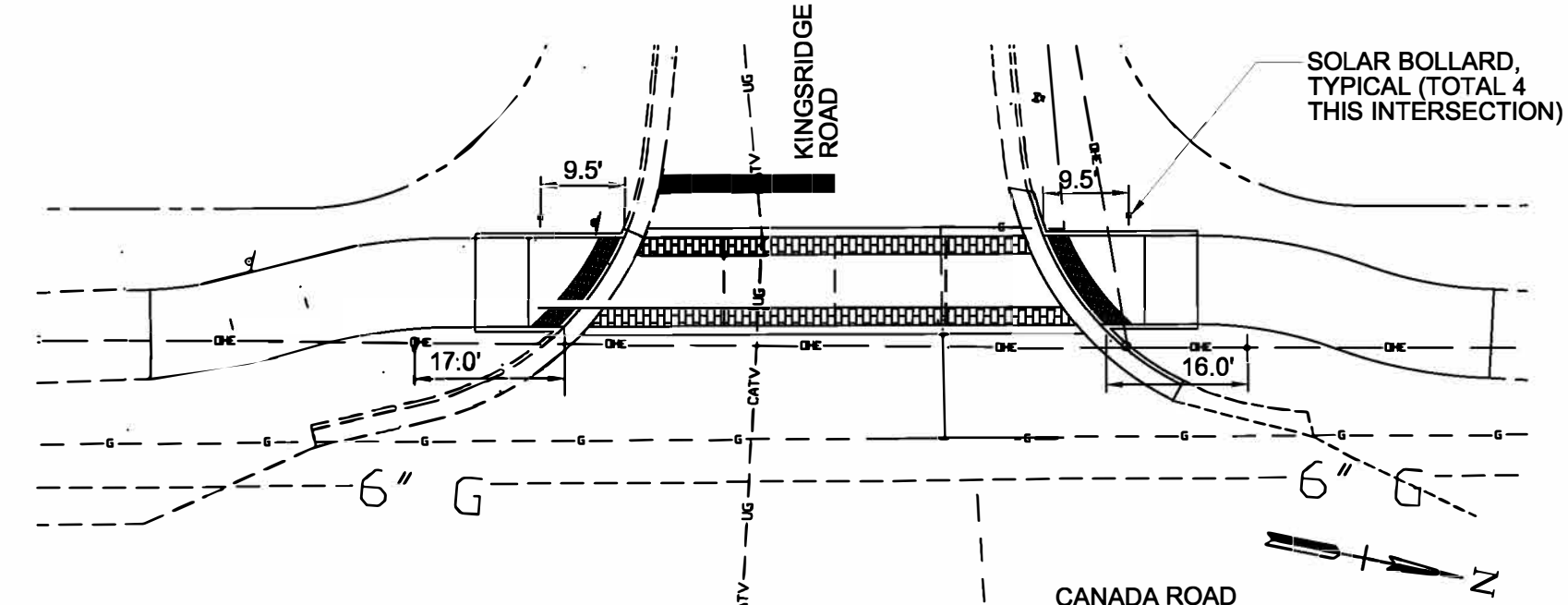
1 INTERSECTION IMPROVEMENTS REFERENCE PLAN
SCALE: 1" = 200'-0"



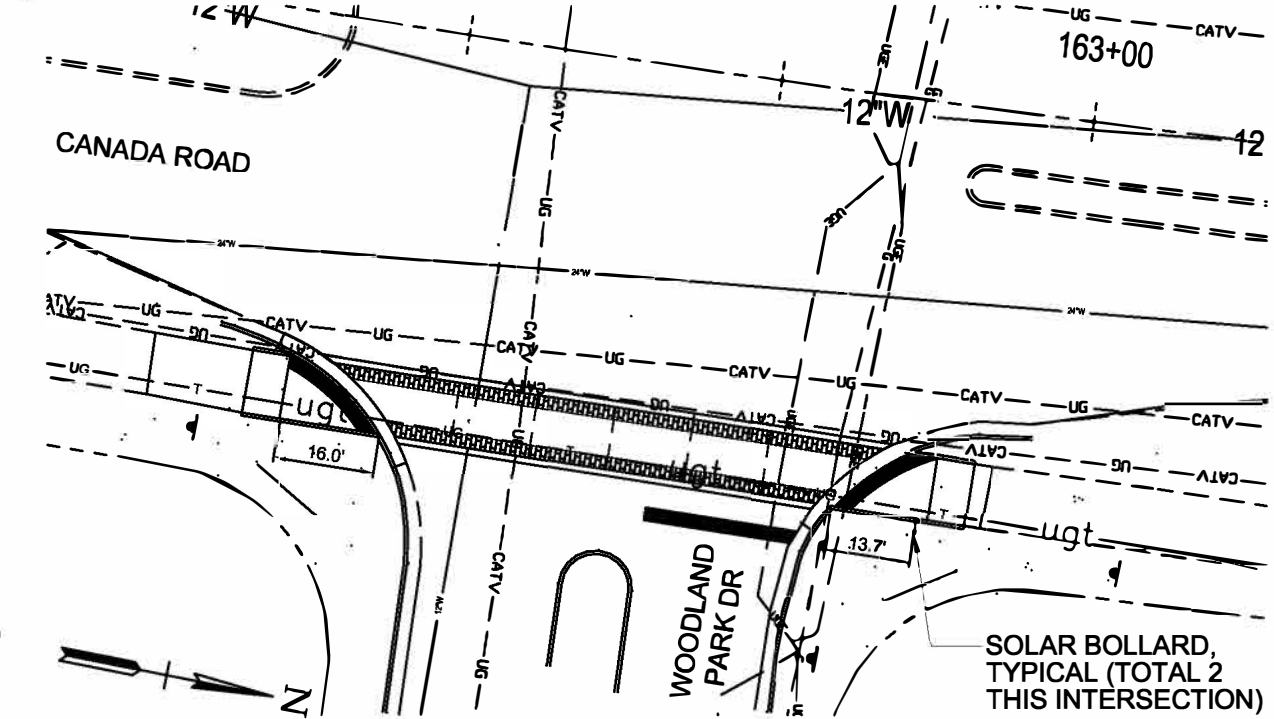
2 MONROE ROAD NORTH / SASKATOON DRIVE AT CANADA ROAD
SCALE: 1" = 20'-0"



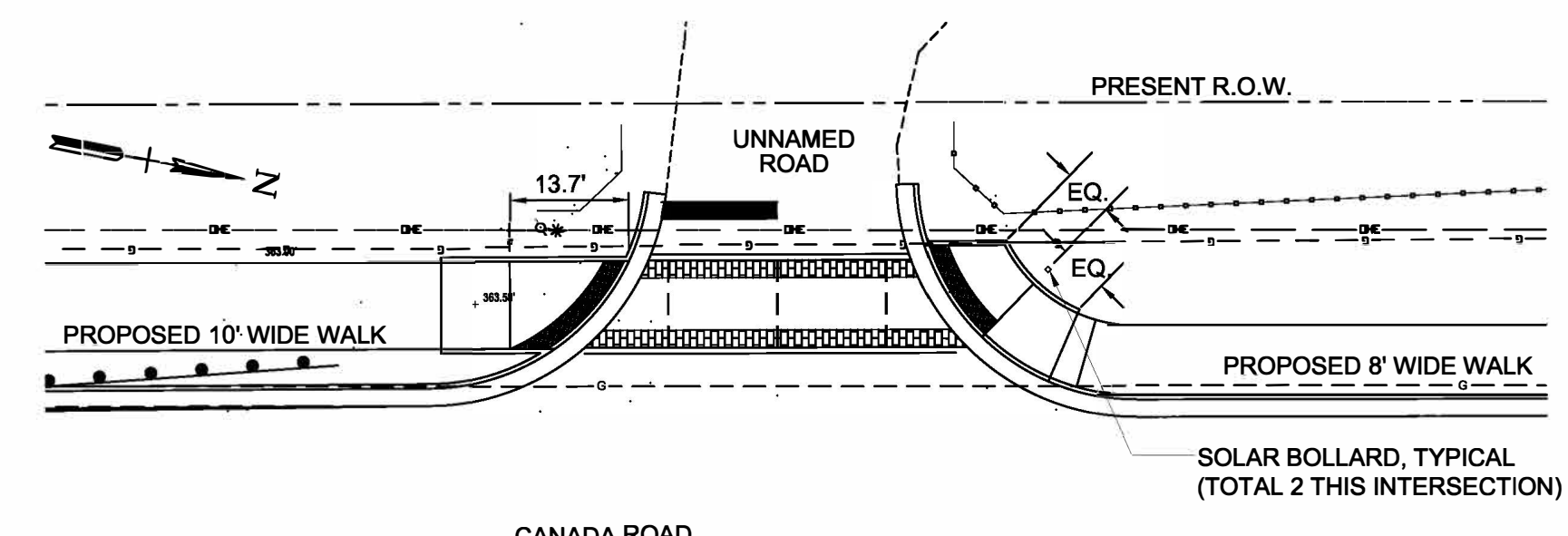
3 QUEBEC LANE AT CANADA ROAD
SCALE: 1" = 20'-0"



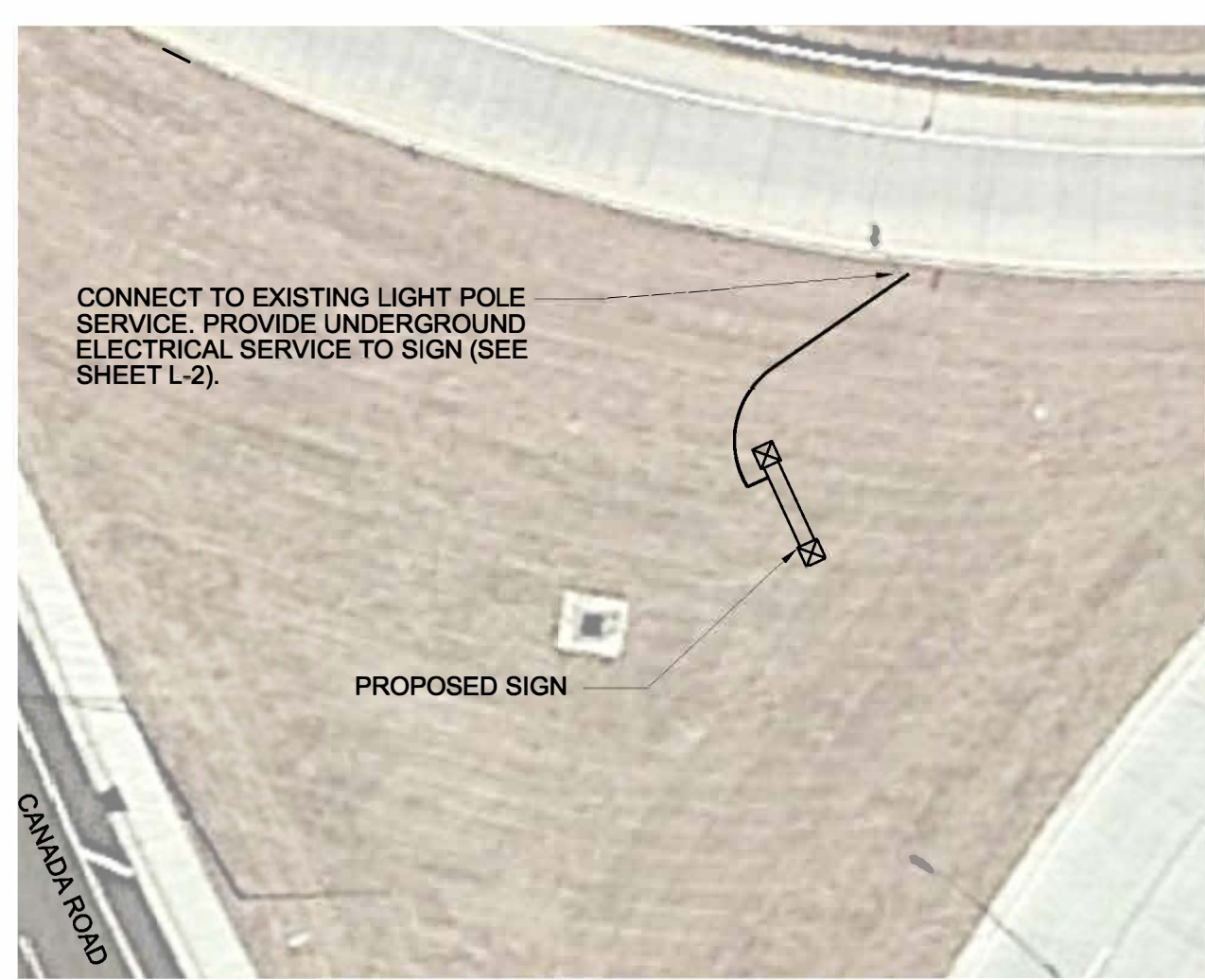
4 KINGSRIDGE DRIVE AT CANADA ROAD
SCALE: 1" = 20'-0"



5 WOODLAND PARK DRIVE AT CANADA ROAD
SCALE: 1" = 20'-0"



6 UNNAMED DRIVE AT CANADA ROAD
SCALE: 1" = 20'-0"



7 I-40/CANADA ROAD SIGN NORTH
SCALE: 1" = 20'-0"



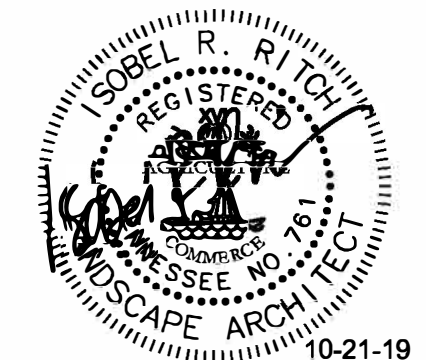
8 I-40/CANADA ROAD SIGN SOUTH
SCALE: 1" = 20'-0"

GENERAL NOTES:

- ALL DIMENSIONS SHOWN ARE TO MIDDLE POINT OF FACE OF BOLLARD CLOSEST TO THE TRAIL, AS MEASURED FROM THE FACE OF CURB WHERE IT INTERSECTS THE TRAIL.
- BOLLARDS TO BE PLACED 2'-0" FROM EDGE OF TRAIL AS SHOWN ON THE PLAN.
- BOLLARDS TO BE SURFACE MOUNTED ON 4000 PSI, 12" DIAMETER CONCRETE BASE, 36" DEPTH, IN LOCATIONS SHOWN ON THE PLANS.
- BOLLARD LIGHTING TO BE CONFIGURED WITH WIDE DISTRIBUTION, ORIENTED SO AS TO ILLUMINATE THE GREATEST LENGTH OF PATHWAY POSSIBLE.
- COLOR OF BOLLARD TO BE BLACK, OR AS APPROVED BY OWNER.
- SIGN LIGHTS TO MATCH EXISTING FIXTURES ON SIGN IN MEDIAN LOCATED NEAR INTERSECTION OF CANADA ROAD AND US HIGHWAY 64. SEE SHEET L-2 FOR ELECTRICAL REQUIREMENTS.

LIST OF ACCEPTABLE SOLAR BOLLARD PRODUCTS / MANUFACTURERS:

- FIRST LIGHT TECHNOLOGIES:** PLB Solar Bollard
3303B Tennyson Ave, Victoria, BC V8Z 3P5, Canada
(844) 279-8754 www.firstlighttechnologies.com
- METEOR LIGHTING:** SP-018 Bollard
1300 John Reed Court, Unit B, City of Industry, California 91745
(213) 255-2060 www.meteor-lighting.com
- RELIANCE FOUNDRY:** Solar Bollard R-9811
Unit 207, 6450-148th Street
Surrey, British Columbia, Canada V3S-7G7
(877) 789-3245 www.reliance-foundry.com



STATE OF TENNESSEE
DEPARTMENT OF TRANSPORTATION

LIGHTING PLAN

| | | | |
|-------|------|---------------|-----------|
| TYPE | YEAR | PROJECT NO. | SHEET NO. |
| CONST | 2019 | 79LPLM-F3-554 | L-2 |
| | | | |
| | | | |

GENERAL NOTES:

- SERVICE SHALL BE 120 VOLTS. VERIFY SERVICE VOLTAGE WITH UTILITY COMPANY.
- ALL CONDUIT SHALL BE RUN CONCEALED UNLESS SPECIFICALLY SHOWN EXPOSED.
- THE CONTRACTOR SHALL CHECK ALL LIGHTING FIXTURES FOR EXACT TYPE MOUNTING AND SPACE REQUIRED BEFORE ROUGHING IN.
- THE CONTRACTOR SHALL WORK CLOSELY WITH THE GENERAL CONTRACTOR AND VERIFY EXACT TYPE OF EQUIPMENT TO BE INSTALLED AND THE DIMENSIONS WHICH MAY AFFECT THE EXACT PLACEMENT OF ELECTRICAL WORK.
- ALL BRANCH CIRCUITS AND FEEDERS SHALL HAVE AN INSULATED GROUND WIRE PULLED IN THE CONDUIT WITH CURRENT CONDUCTOR UNLESS SPECIFICALLY NOTED OTHERWISE ON THE PLANS. THE GROUNDING CONDUCTOR SHALL BE SIZED ACCORDING TO TABLE 250-122 OF THE LATEST EDITION OF THE NATIONAL ELECTRICAL CODE UNLESS INDICATED TO BE LARGER IN THE SPECIFICATIONS OR PLANS.
- DO ALL WORK IN COMPLIANCE WITH ALL APPLICABLE CODES, LAWS AND ORDINANCES, THE NATIONAL ELECTRICAL CODE (HEREINAFTER REFERRED TO AS "CODE" OR "NEC"), THE AMERICANS WITH DISABILITIES ACT, AND THE REGULATIONS OF THE LOCAL AUTHORITIES HAVING JURISDICTION AND, WHERE APPLICABLE, UTILITY COMPANIES. OBTAIN AND PAY FOR ANY AND ALL REQUIRED PERMITS, INSPECTIONS, CERTIFICATES OF INSPECTIONS AND APPROVAL, AND THE LIKE, AND DELIVER SUCH CERTIFICATES TO THE OWNER.
- THE MAIN SERVICE SHALL HAVE THE GROUNDING CONDUCTOR (NEUTRAL) GROUND TO THE GROUNDING ELECTRODE SYSTEM AT THE SUPPLY SIDE OF THE SERVICE DISCONNECTING MEANS BY A GROUNDING ELECTRODE CONDUCTOR NOT SMALLER THAN THAT SHOWN IN TABLE 250-56 OF THE NEC. THE GROUNDING CONDUCTOR (NEUTRAL), THE GROUNDING ELECTRODE CONDUCTOR, AND THE EQUIPMENT GROUNDING CONDUCTOR CONNECTIONS SHALL BE MADE INSIDE THE SERVICE ENTRANCE EQUIPMENT.
- ALL CONDUCTORS SHALL BE COPPER.
- MINIMUM CONDUCTOR SIZE SHALL BE #12.
- ALL CONDUIT INSTALLED INDOORS SHALL BE EMT, OTHERWISE SHALL BE IMC.
- ALL FUSES SHALL BE DUAL ELEMENT, TIME DELAY, RATED 100,000 AIC.
- ALL DISCONNECT SWITCHES SHALL BE HEAVY DUTY TYPE.
- ALL CONDUCTORS SHALL BE THHN TYPE INSULATION.
- IT SHALL BE THE RESPONSIBILITY OF THIS CONTRACTOR, PRIOR TO BID, TO REAFFIRM WITH THE UTILITY COMPANIES INVOLVED, THAT THE LOCATION, ARRANGEMENT (AND THE POWER COMPANY: VOLTAGE, PHASE & METERING REQUIRED) AND CONNECTIONS AT THE UTILITY SERVICE ARE IN ACCORDANCE WITH THEIR REGULATIONS & REQUIREMENTS. IF THEIR REQUIREMENTS ARE AT A VARIANCE WITH THESE DRAWINGS & SPECIFICATIONS, THE CONTRACT PRICE SHALL INCLUDE ANY ADDITIONAL COST NECESSARY TO MEET THOSE REQUIREMENTS WITHOUT EXTRA COST TO THE OWNER AFTER A CONTRACT HAS BEEN ENTERED INTO.
- ON MANY PROJECTS, THE UTILITY COMPANY MAY LEVY CHARGES DUE TO LOCATION, SIZE OR TYPE OF SERVICE INVOLVED. THE CONTRACTOR SHALL BE RESPONSIBLE FOR THESE CHARGES, UNLESS SUCH CHARGES ARE NOT AVAILABLE PRIOR TO BID & CONTRACTOR SO DOCUMENTS AT BID OPENING. SHOULD THE COST NOT BE AVAILABLE, PRIOR TO BID, THE CONTRACTOR SHALL SUBMIT A LETTER SO STATING WITH HIS BID.
- ARRANGE WITH UTILITY COMPANIES FOR SUCH SERVICE AS SHOWN OR HEREIN SPECIFIED & INSTALLATION OF METER WHERE SHOWN. FURNISH WITH SHOP DRAWINGS, A SIGNED DOCUMENT FROM UTILITY COMPANIES DESCRIBING THE LOCATION & TYPE OF SERVICES TO BE FURNISHED AND ANY REQUIREMENTS THEY MAY HAVE. THIS DOCUMENT SHALL BE SIGNED FOR EACH UTILITY COMPANY BY A PERSON RESPONSIBLE FOR GRANTING SUCH SERVICES.
- PAY ALL CHARGES (IF ANY) IN CONNECTION THEREWITH, INCLUDING PERMANENT METER DEPOSIT. METER DEPOSIT WILL BE REFUNDED TO THE CONTRACTOR AT TIME OF OWNER'S ACCEPTANCE.
- SEE ARCHITECTURAL/CIVIL DRAWINGS FOR LOCATIONS OF MONUMENT SIGNS.

GRAPHICAL ELECTRICAL SYMBOLS

| BRANCH CIRCUIT SYMBOLS | |
|------------------------|---|
| | BRANCH CIRCUIT HOMERUN TO 20A, 1-POLE CIRCUIT BREAKER IN PANELBOARD OR DEVICE NOTED. WIRE SIZE IS 2#12&1#12GRD-3/4" |
| | BRANCH CIRCUIT CONCEALED IN CEILING OR WALL. |
| | BRANCH CIRCUIT CONCEALED IN FLOOR. |
| | BRANCH CIRCUIT EXISTING CONDUIT BARS DENOTE NEW CONDUCTORS. |
| | BRANCH CIRCUIT EXPOSED. |
| | BRANCH CIRCUIT RISER UP. |
| | BRANCH CIRCUIT RISER DOWN. |
| BRANCH CIRCUIT NOTES | |
| | BRANCH CIRCUIT 3#12&1#12GRD-3/4" |
| | BRANCH CIRCUIT 4#12&1#12GRD-3/4" |
| | BRANCH CIRCUIT 2#10&1#10GRD-3/4" |
| | BRANCH CIRCUIT 3#10&1#10GRD-3/4" |

SIZE CONDUIT PER NEC FOR GREATER NUMBER OF CONDUCTORS OR AS NOTED. THE NUMBER IN THE CIRCUIT INDICATES AWG WIRE SIZE AND THE HASHMARKS INDICATE THE NUMBER OF WIRES REQUIRED. EQUIPMENT GROUND CONDUCTOR SHALL BE SIZED IN ACCORDANCE WITH NEC TABLE 250-122. THE NUMBER OF HASH MARKS DO NOT INCLUDE EQUIPMENT GROUNDING CONDUCTOR.

| GENERAL SYMBOLS | |
|-----------------|---------------------------|
| | SAFETY SWITCH, NON-FUSED. |
| | SAFETY SWITCH, FUSED. |

| GENERAL ABBREVIATIONS | |
|-----------------------|---|
| H | MOUNTING HEIGHT ABOVE FINISHED FLOOR. |
| AF | ABOVE FINISHED FLOOR. |
| WP | WEATHER PROOF - NEMA 3R |
| RT | RAIN TIGHT - NEMA 4. |
| EP | EXPLOSION PROOF. |
| TP | TAMPER PROOF. |
| A | MOUNT ABOVE COUNTER. |
| BC | MOUNT BELOW COUNTER. |
| F | FLUSH MOUNTED. |
| SLD | SEE SINGLE LINE DIAGRAM. |
| GFI | GROUND FAULT INTERRUPTING. |
| C | CONDUIT. |
| GC | FLEXIBLE CONDUIT. |
| SFC | SEAL-TITE FLEXIBLE CONDUIT. |
| EMT | ELECTRICAL METALLIC TUBING. |
| IMC | INTERMEDIATE METALLIC CONDUIT. |
| RG | RIGID CONDUIT. |
| PVC | NONMETALLIC RIGID CONDUIT. |
| EX | EXISTING. |
| XR | EXISTING TO BE REMOVED |
| RL | EXISTING TO BE REMOVED AND RELOCATED. |
| RQ | EXISTING TO BE REMOVED. EXTEND CIRCUIT CONDUCTORS AS REQUIRED AND INSTALL FINISHED BLANK COVER. |
| RR | EXISTING TO BE REMOVED AND REPLACED WITH NEW. |
| R/LD | RELOCATED POSITION. |

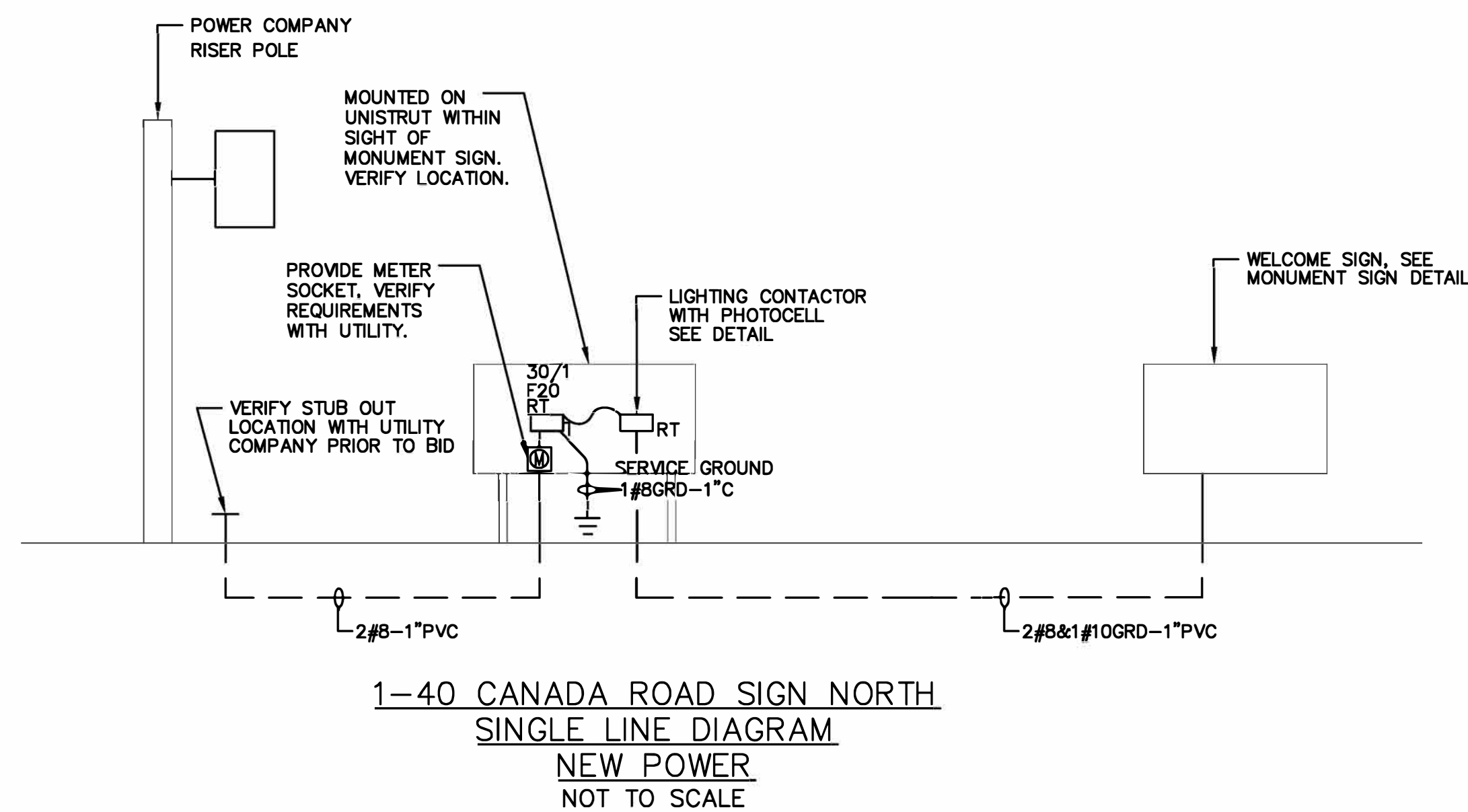
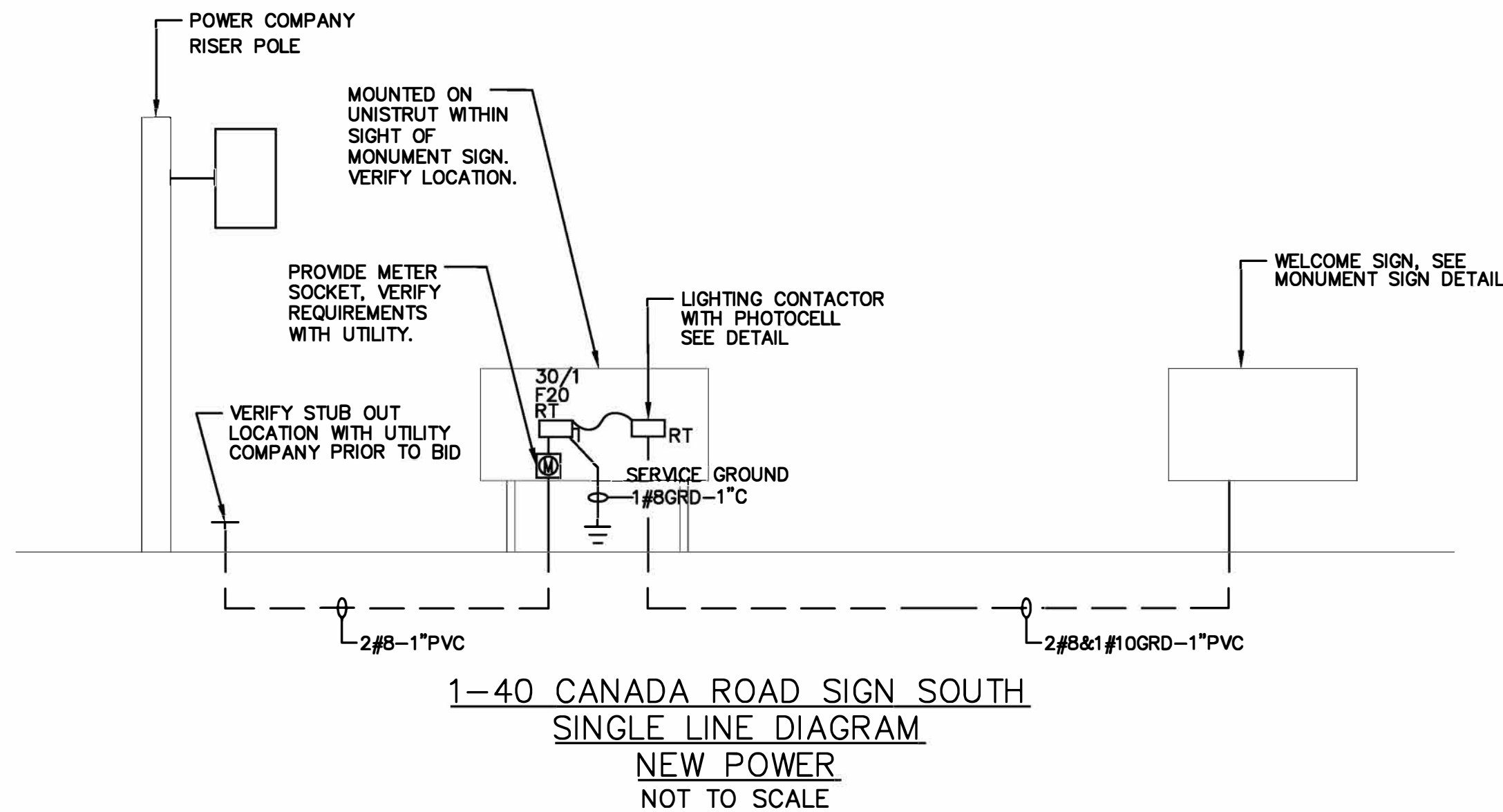
LIGHTING FIXTURE SCHEDULE

| TYPE | MANUFACTURER | CATALOG NUMBER | LAMPS | | | MTG. TYPE | MTG. HT. | REC. DEPTH | DESCRIPTION |
|------|--------------|----------------|----------|-------|------|-----------|----------|------------|--|
| | | | LAMP/FIX | WATTS | TYPE | | | | |
| M | - | - | LOT | - | LED | S | W | - | MONUMENT LANTERN LIGHT, MATCH EXISTING FIXTURES, VERIFY VOLTAGE. |
| V | - | - | LOT | - | LED | S | G | - | MONUMENT FLOOD LIGHT, MATCH EXISTING FIXTURES, VERIFY VOLTAGE. |

ABBREVIATIONS: LI-LAY-IN C-CEILING LG-LENS GASKETING GMF-INTERNAL SLOW BLOW FUSE FL-FLUORESCENT MH-METAL HALIDE HO-HIGH OUTPUT
 AFF-ABOVE FINISH FLOOR P-PENDENT FC-FROM CEILING R-RECESSED AM-ABOVE MIRROR W-WALL AD-ABOVE DOOR
 S-SURFACE DTT-DOUBLE TWIN TUBE FLUORESCENT CA-CANOPY TC-TOP OF METAL CANOPY AW-ABOVE WINDOW G-GROUND

LIGHTING FIXTURE SCHEDULE GENERAL NOTES:

- EACH LIGHT FIXTURE SHALL BE EQUIPPED WITH LAMPS. FURNISH AND INSTALL LAMPS AS SHOWN IN SCHEDULE AND IN SPECIFICATIONS.
- FIXTURE OUTLET BOX LOCATIONS SHOWN ON THE DRAWINGS ARE DIAGRAMMATIC AND APPROXIMATE IN LOCATION. EXACT POSITION OF THE OUTLET BOX SHALL DEPEND ON THE FIXTURE AND THE MOUNTING DETAIL.
- MOUNTING AND SUPPORT DETAILS FOR LIGHTING FIXTURES SHALL BE SUBMITTED TO AND APPROVED BY THE ENGINEER BEFORE THE FIXTURES ARE INSTALLED. NO COMBUSTIBLE MATERIALS SHALL BE USED.
- WET LOCATION FIXTURES SHALL BE MOUNTED IN ACCORDANCE WITH THE MANUFACTURER'S RECOMMENDATION SO AS TO ENSURE THE PREVENTION OF MOISTURE FROM ENTERING THE FIXTURE. IN ADDITION, EACH CONDUIT ENTRY WILL BE SEALED BY USE OF AN APPROVED SWEDGE FITTING WITH A NEOPRENE SEAL, AS MANUFACTURED BY JOHN REMKE COMPANY OR APPROVED EQUAL.
- OUTLET BOXES SERVING WET LOCATION FIXTURE SHALL BE CODE SIZE, WITH A WATERTIGHT SOLID CAST TOP. CONDUIT ENTRIES SHALL BE THREADED.

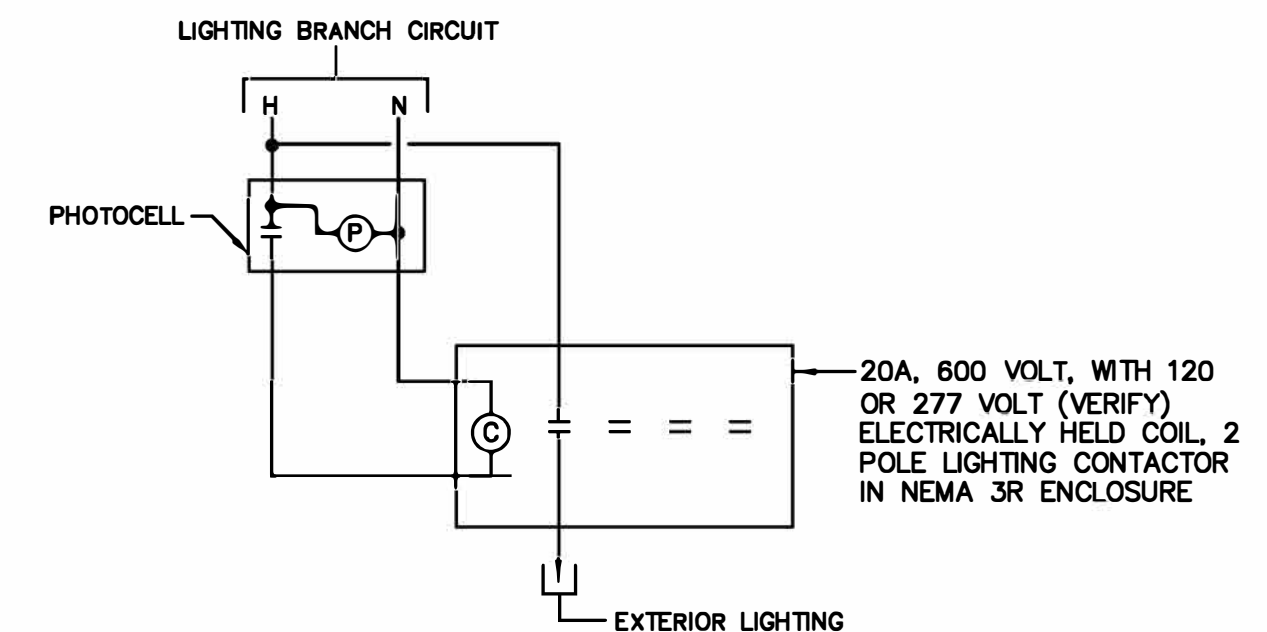
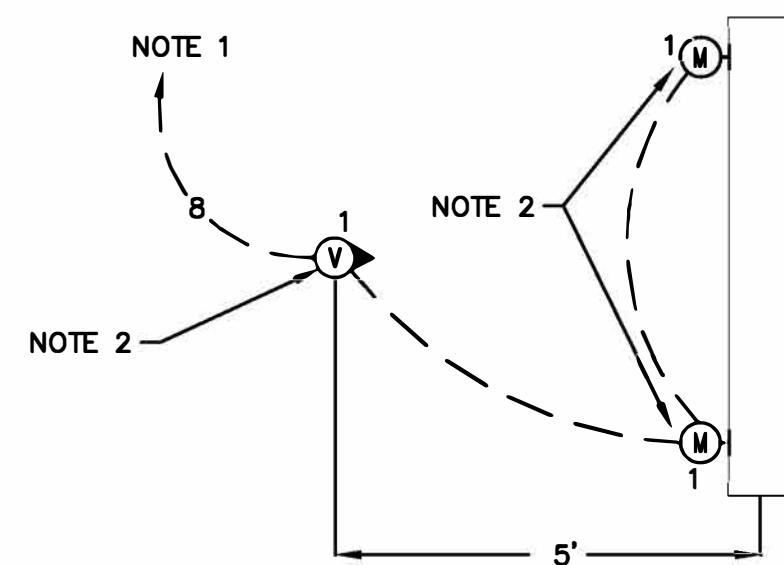


GENERAL NOTES:

- SEE ARCHITECTURAL DRAWINGS FOR LOCATIONS AND ELEVATIONS.

NOTES:

- HOMERUN TO DISCONNECT SWITCH THROUGH LIGHTING CONTACTOR. SEE DETAIL.
- MATCH NEW FIXTURES WITH EXISTING FIXTURES ON EXISTING MONUMENT SIGN. VERIFY FIXTURES WITH ARCHITECT.



STATE OF TENNESSEE
DEPARTMENT OF TRANSPORTATION

**ELECTRICAL
DETAILS**