



January 18, 2022

Ms. Ann English
State Conservationist
Natural Resources Conservation Service
1835 Assembly Street, Room 650
Columbia, SC 29201

Dear Ms. English:

We request NRCS Watershed Program planning assistance for a potential Public Law (PL) 566 project in Georgetown County 03040206-10 Wacamaw River-Atlantic Intracoastal Waterway. The project would improve the current access road and its drainage system serving the Island's residents and citizens. During storm events and extreme high tides, access to the boat services is blocked where emergency services cannot be provided. This project proposes to improve the road bed conditions and allow for larger storm events to drain while preventing erosion of the current road and improving water quality of the adjacent rivers.

We are a local government with a legal interest in or responsibility for the watershed project proposed. We understand, as sponsors of a PL 566 planning effort, that our responsibilities will include:

- Assisting in the locally led planning effort,
- Contributing a share of the project costs, as determined by NRCS, by providing funds or eligible services necessary to undertake the activity,
- Before being credited with the value of any in-kind contributions for in-kind services and/or acquisition of land rights, Sponsor will sign a Memorandum of Understanding (MOU) with NRCS,
- Obtaining any necessary real property rights, by eminent domain, if necessary,
- Obtaining any needed water rights, and regulatory permits at the Sponsor's cost,
- Agreeing to provide for any required operation and maintenance of the completed measures.

We look forward to working with NRCS staff to complete a Preliminary Investigation Feasibility Report (PIFR) to provide reasonable assurance that a potential watershed project can be developed that addresses a PL 566 purpose and that there are no apparent insurmountable obstacles to the completion of that project.

The names, addresses, and telephone numbers of the administrative and technical contact persons in our organization are as follows:

Ray C. Funnye, Director of Public Services rcfunnye@gtcounty.org 843-545-3325

Tracy D. Jones, P.E. Stormwater Division Manager tjones@gtcounty.org 843-545-3258

Please contact them for any additional information that you might need in assessing our request.

Sincerely,



Angela Christian, ICMA-CM
County Administrator



Attachments or Enclosures:

Sandy Island Road Access Drainage Improvement Area Map

Sandy Island Watershed Map

Office of the County Administrator

716 Prince Street • Georgetown, SC 29440

Phone: 843-545-3006 • Fax: 843-545-3121 • email: olewis@gtcounty.org



Source: Esri, DigitalGlobe, GeoEye, Earthstar Geographics, CNES/Airbus DS, USDA, USGS, AeroGRID, IGN, and the GIS User Community



Exhibit
Sandy Island Drainage Phase 2
Multiple
Horry County, SC
August 20, 2020



1" = 200'



Georgetown County
Department of Public Services
Innovative Leadership & Teamwork!



Sandy Island Drainage Improvement

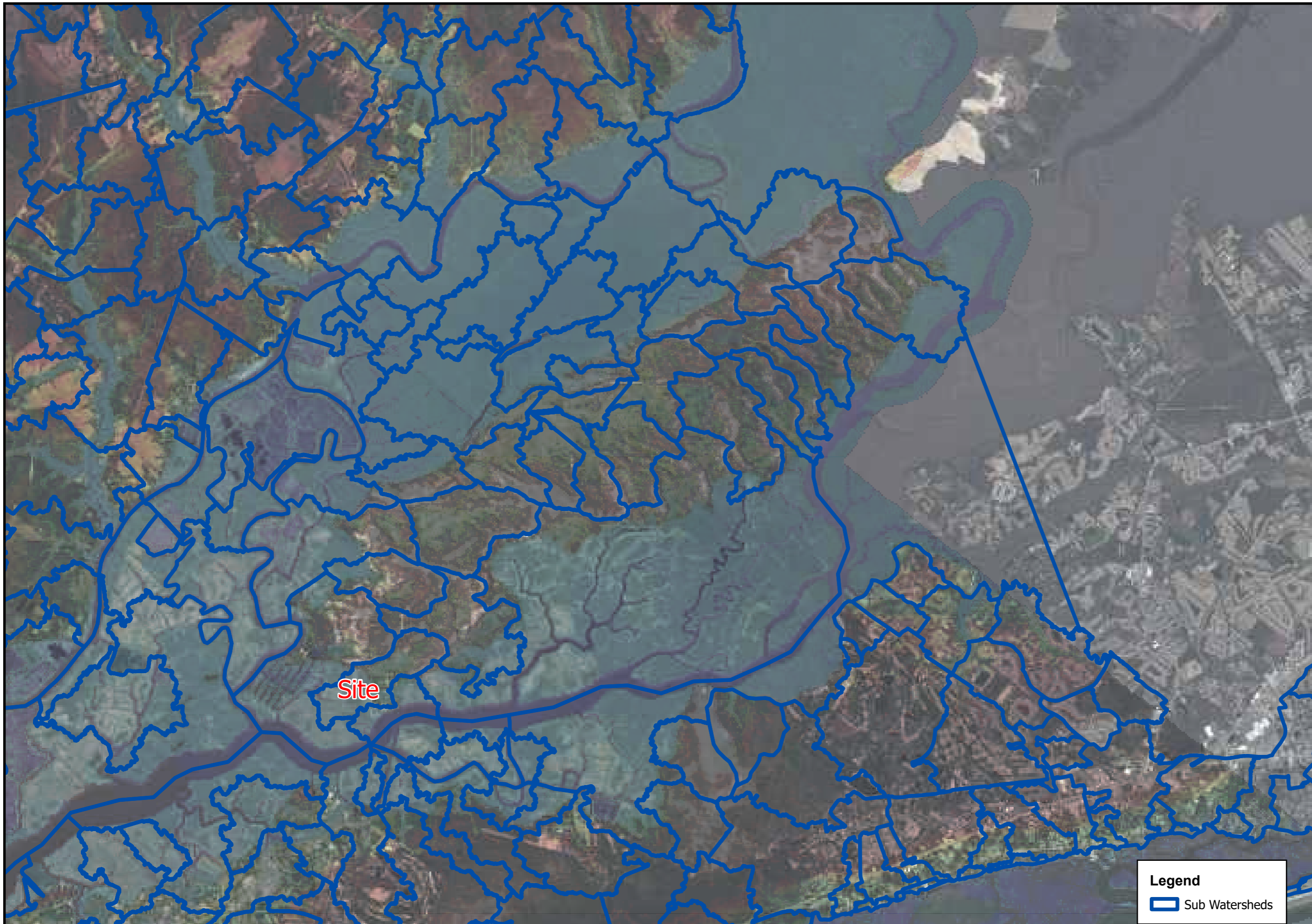
Sandy Island is located in Georgetown County, South Carolina, nestled between the Waccamaw and the PeeDee Rivers. Sandy Island is made up of 9000 acres of prehistoric sand dunes that comprise this refuge. The Island's students and residents may only travel to and from the island by boat. As such, Sandy Island must protect this service entrance from weathering, erosion, and storm events.


The Island's unincorporated community is connected to the Island's sole resource boat dock by a dilapidated access road. This socially disadvantaged area originally created a foot path with boards to access the area the service side of the island. Over time, the foot path was widened to allow service vehicles to travel to get to its residents. This access road has been patched and put back together over the years from exposure due to extreme storm events and high tides. This area of Georgetown County, within the period from 1993 to 2020, was exposed to 50 total flood events varies between flash floods, coastal floods and river floods. Severe erosion occurred of the access road where residents couldn't navigate to the boat dockage for periods at a time. Erosion also effects the quality of water in the vicinity creeks, canals, channels, and the ultimate discharge to the adjacent rivers. The 2400 linear feet dirt access road is located in the flood plain of the PEE River according to the U.S. Geological Survey, 2019, National Hydrography Dataset.

Georgetown County plans to do improvements to the access road and its drainage system to ensure that the residents have a road to traverse in all cases, especially in the case of emergencies. Additionally, the improvements shall serve as a means to prevent erosion and improve water quality in this area. As a first step, Georgetown County sought the input of the Army Corps of Engineers (ACOE) for the guidance and assistance with this type of proposed project. An on-site field visit with an ACOE representative yielded an advised non-reporting permit that allows for fill in an upland area under the Nationwide Permit 14. This would potentially allow for a design to raise the road bed above the highest flood elevation recorded and add the appropriately designed stormwater drainage appurtenances. At this time, the County estimates the cost to design, permit, bid, and construct this proposed project to be \$500,000.

Stormwater

129 Screven Street • PO Drawer 421270 • Georgetown, SC 29440
Phone: 843-545-3524 • Fax: 843-545-3005 • email: stormwater@gtcountysc.org

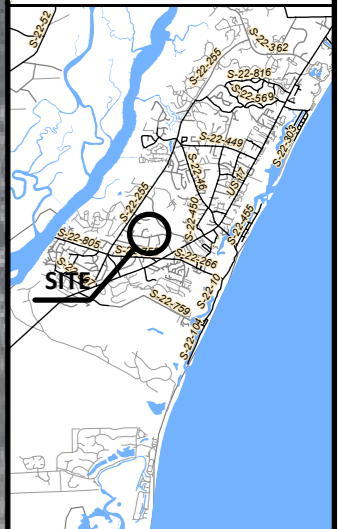



Legend
 Sub Watersheds



Georgetown County
 129 Screven Street
 Georgetown SC 29442
 Phone (843) 545-3524
 Fax (843) 545-3005
 www.gtcounty.org

SOUTH CAROLINA
 PROFESSIONAL GIS SURVEYOR
 NO: 24316
 STEPHEN G. WILLIAMS




SCALE:
 1:48,000
 1" = 4,000'
 0 400000
 1 mi

PROJECT: GEORGETOWN COUNTY	TITLE: NRCS GRANT PROPOSAL	PREPARED BY: GEORGETOWN COUNTY DEPARTMENT OF PUBLIC SERVICES
	DATE: 1/18/2022	

SHEET:
M-01

This data is provided "as is" without warranty or any representation of accuracy, timeliness or completeness. The burden for determining accuracy, completeness, timeliness, and fitness for or the appropriateness for use rests solely on the user. Georgetown County makes no warranties, express or implied, as to the use of the data. There are no implied warranties or warranties of fitness for a particular purpose or merchantability, and Georgetown County shall have no liability for actual or consequential losses arising from use of the data. The user acknowledges and accepts the limitations of the data, including the fact that the data is dynamic and is in a constant state of maintenance, correction and update. The limitations of liability contained in this disclaimer may not apply in your jurisdiction, where not allowed by applicable local law.