



COOPER CARRY
THE CENTER FOR CONNECTIVE ARCHITECTURE

191 Peachtree Street NE
Suite 2400
Atlanta, GA 30303-1770
(404) 237-2000
coopercarry.com

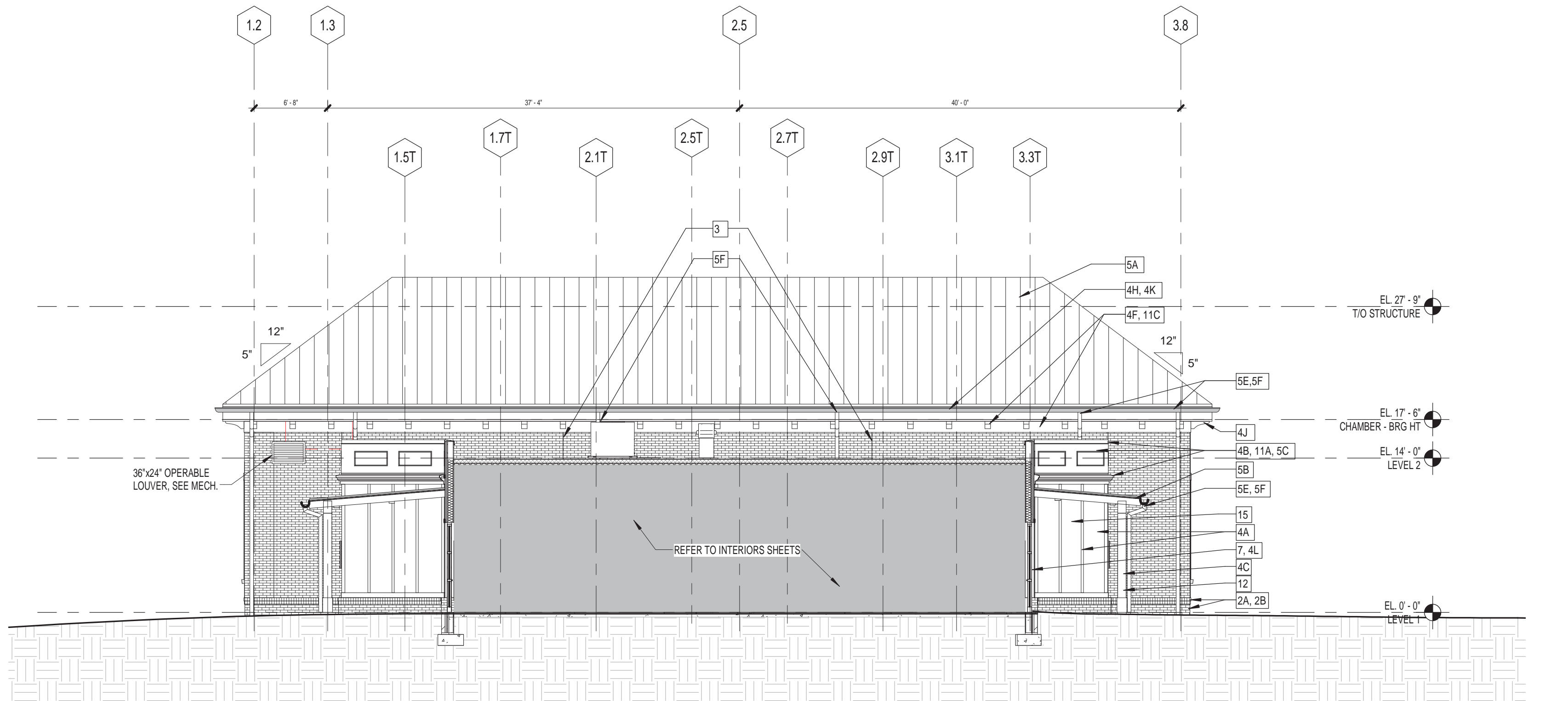
ATLANTA NEW YORK WASHINGTON

© 2015 COOPER CARRY

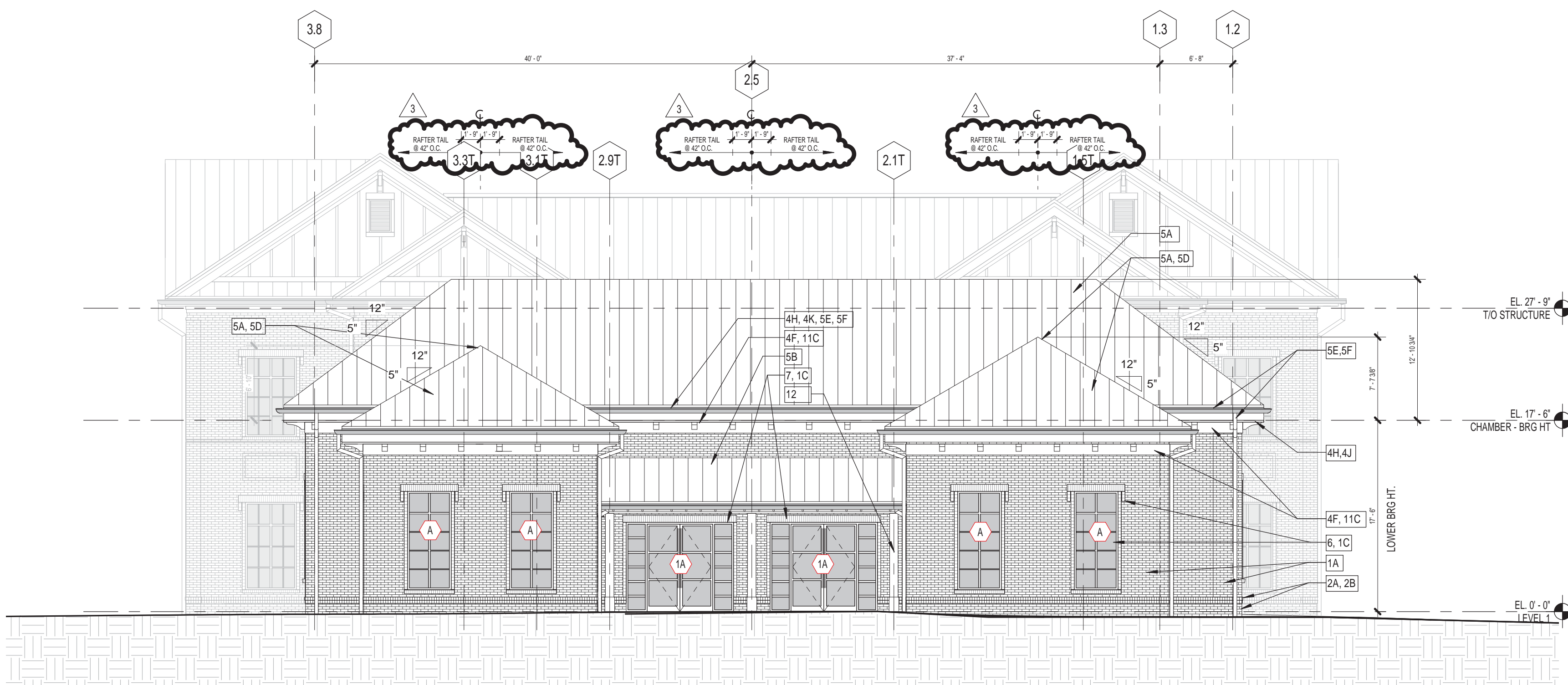


ISSUANCES

No.	Drawing Issue Description	Date
1	ISSUED FOR DESIGN DEVELOPMENT	7/17/2015
2	ISSUED FOR CONSTRUCTION	12/14/15
3	ISSUED FOR CONSTRUCTION / CONFORMED	02/12/16



2 CHAMBER BLDG - SOUTH ELEVATION
A403 SCALE: 1/8" = 1'-0"



1 CHAMBER BLDG - NORTH ELEVATION
A403 SCALE: 1/8" = 1'-0"

KEYNOTE LEGEND - BLDG SECTIONS (ADMIN BLDG)		ALSO REFER TO SHEETS A921 & A922 FOR ADD'L INFORMATION	
1A	PRIMARY BRICK VENEER - TYPE 1, RUNNING BOND, CONCAVE MORTAR JOINTS	1F	BRICK RECTANGULAR PROFILE - TYPE 1, STRETCHER HEAD & SILL COURSE, STACKED JAMB COURSE EACH SIDE, ALL PROJECTED 1/2"
1B	BRICK SOLDIER COURSE - TYPE 1, CONCAVE MORTAR JOINTS	2A	DOUBLE ROWLOCK BRICK WATERTABLE - TYPE 2, PROJECTED 1/2" EACH COURSE, CONCAVE MORTAR JOINTS
1C	BRICK WINDOW/DOOR SURROUND - TYPE 1, SOLDIER HEAD COURSE w/ 2 COURSE OUTER SIDE CORBELS PROJECTING 1/2" EACH COURSE, STACKED JAMB COURSE EACH SIDE (FULL HT) PROJECTED 1/2" & ROWLOCK SILL COURSE (WINDOWS), PROJECTED 1" - TYP AT ALL MASONRY LOCATIONS	2B	BASE BRICK VENEER - TYPE 2, RUNNING BOND, CONCAVE MORTAR JOINTS
1D	BRICK PILASTER PROJECTION (1") - TYPE 1, RUNNING BOND, CONCAVE MORTAR JOINTS	3	MASONRY CONTROL JOINT
1E	BRICK RECESS COURSE - TYPE 1, 1/2"	4A	FIBER CEMENT PANEL CLADDING w/ VERTICAL BATTEN STRIPS
		4B	FIBER CEMENT PANEL CLADDING / CUTOUT FEATURE
4C	FIBER CEMENT SKIRTBOARD, 4/4 (6")	4L	FIBER CEMENT TRIM, 4/4 (4") - TYP AT ALL WINDOW/ DOOR/ LOUVER LOCATIONS AT FIBER CEMENT CLADDING
4D	FIBER CEMENT HORIZONTAL TRIM BAND, 4/4 (8")	4M	FIBER CEMENT CORNER TRIM, 4/4 (4") - TYP AT ALL OUTSIDE & INSIDE CORNERS AT FIBER CEMENT CLADDING
4E	FIBER CEMENT RAKE TRIM (ADMIN), 4/4 (4" & 8")	5A	STANDING SEAM METAL ROOF ASSEMBLY, GALVALUME, 2" OVERHANG TYP.
4F	FIBER CEMENT RAKE TRIM (CHAMBERS), 4/4 (12")	5B	STANDING SEAM METAL CANOPY ASSEMBLY w/EXPOSED JOIST FRAMING, GALVALUME
4G	FIBER CEMENT FASCIA TRIM (GABLE FACE), 4/4 (4" & 8")	5C	STANDING SEAM METAL COPING, GALVALUME
4H	FIBER CEMENT FASCIA TRIM (EAVE FACE), 4/4 (12")	5D	RIDGE VENT, GALVALUME
4J	FIBER CEMENT BEAD BD SOFFIT (PERPENDICULAR) w/VENTS	5E	ALUMINUM GUTTER SYSTEM, GALVALUME
4K	FIBER CEMENT BEAD BD SOFFIT (PERPENDICULAR) w/o VENTS		
5F	ALUMINUM DOWNSPOUT, GALVALUME	12A	FIBERGLASS CORNICE PROFILE
6	LOW SLOPE TPO MEMBRANE ROOFING ASSEMBLY	12B	FIBERGLASS BRACKET PROFILE (ADMIN BLDG.)
7	ALUMINUM STOREFRONT THERMAL WINDOW SYSTEM (2' x 6'), 1" INSULATED GLAZING INFILL (FRONT SET)	12C	FIBERGLASS RAFTER TAIL PROFILE (CHAMBER BLDG.)
8	ALUMINUM STOREFRONT THERMAL ENTRANCE SYSTEM (2' x 6') w/SIDELITES, 1" INSULATED GLAZING INFILL (FRONT SET)	13A	10" HEAVY TIMBER COLUMN w/ 1x CEDAR WRAP BASE
9	HM DOOR /FRAME, PAINT PER SCHED.	13B	14" HEAVY TIMBER BEAM
10	HM LOUVER (NON-FUNCTIONAL) / FRAME, PREFINISHED	13C	10" HEAVY TIMBER BEAM & 10" HT COLUMNS AT BALCONY SURROUND w/BRACKETS
11	ALUMINUM GUARDRAIL SYSTEM, PAINT PER SCHED.	13D	PREFABRICATED HEAVY TIMBER TRUSS (EXPOSED) w/2" TONGUE & GROOVE
		14	PRE-ENGINEERED TRUSS SYSTEM (REFERENCE ONLY)
		15A	MONOLITHIC CONCRETE STEPS
		15B	CONCRETE FILLED METAL PAN STAIR, SEE FIN. SCHED.
		16	1 HR U.L. GWB CEILING ASSEMBLY (VERTICAL CIRCULATION)
		17	WATERPROOFING / DRAINAGE SYSTEM AT ELEVATOR PIT FOUNDATION - CONNECT DRAINAGE TO STORMWATER SYSTEM
		18	EXTERIOR LIGHTING
		19	SHADING DEVICE (BAHAMA SHUTTERS) - PREFINISHED
		20	ROOF HATCH

MILTON CITY HALL



MILTON, GA

CITY OF MILTON

BUILDING ELEVATIONS -
COUNCIL

Sean McLendon	20140238
Principal-in-Charge	Project No.
Brian M. Parker, AIA	12/14/15
Project Manager	Date
Venus Gervin	
Project Architect	
SA, AJ, DY, AN	
Staff Architect	

A403

Drawings No.

PROJECT NUMBER: 20140238 PROJECT NAME: MILTON CITY HALL
SHEET NUMBER: A403 - BUILDING ELEVATIONS - COUNCIL
M:\2014\20140238\A403 drawings\A403.dwg
2/13/2016 3:11:47 AM