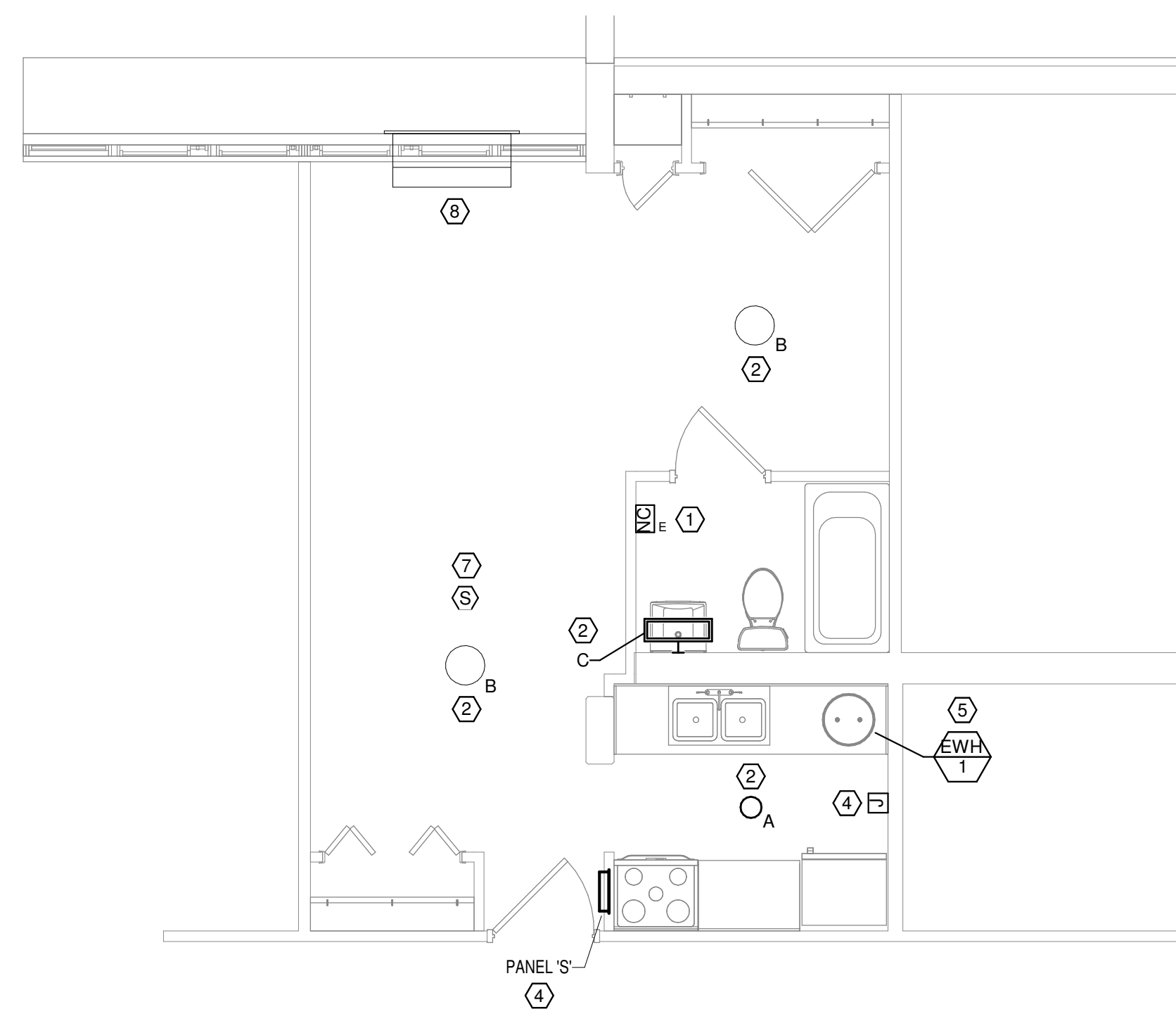
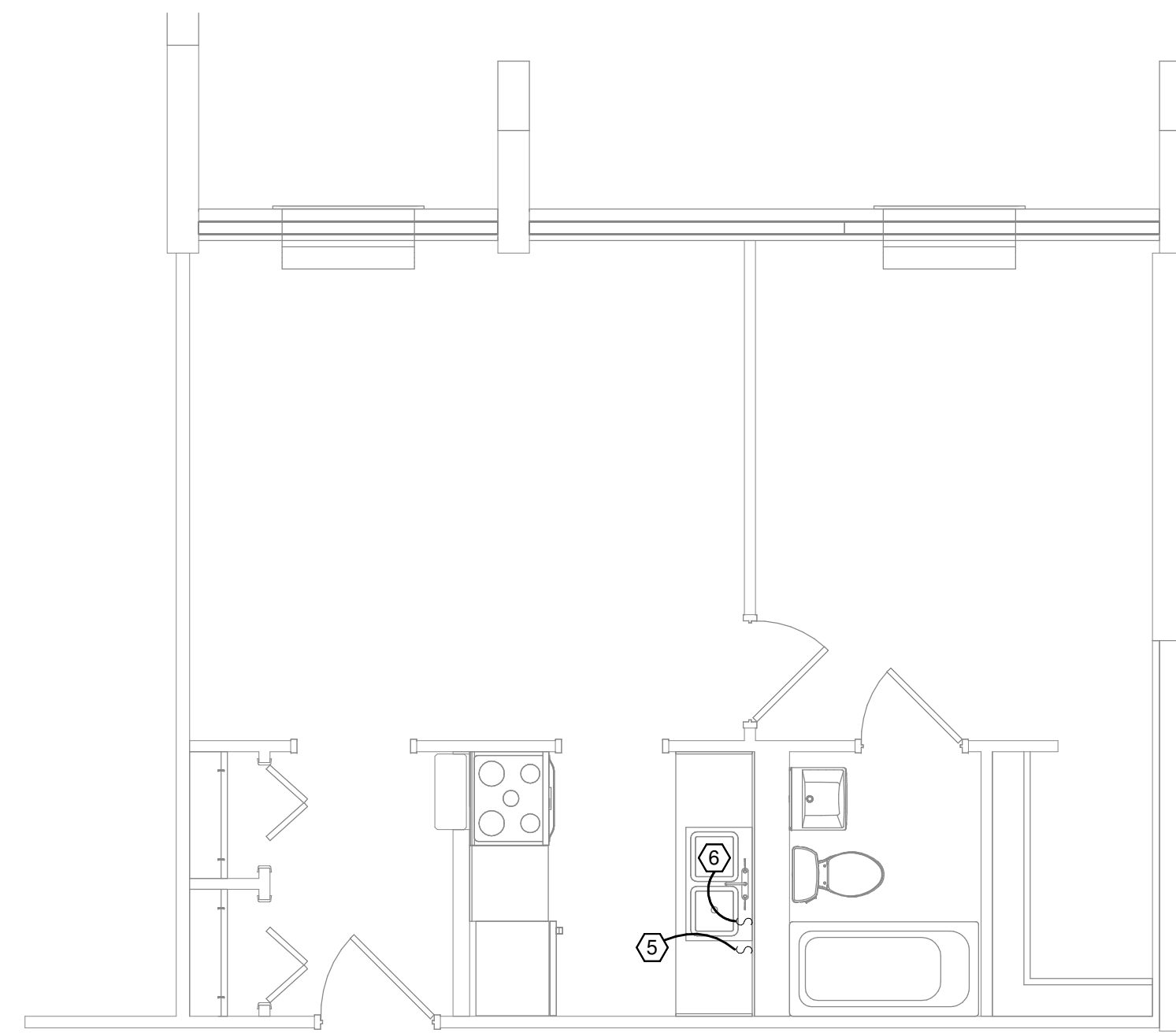


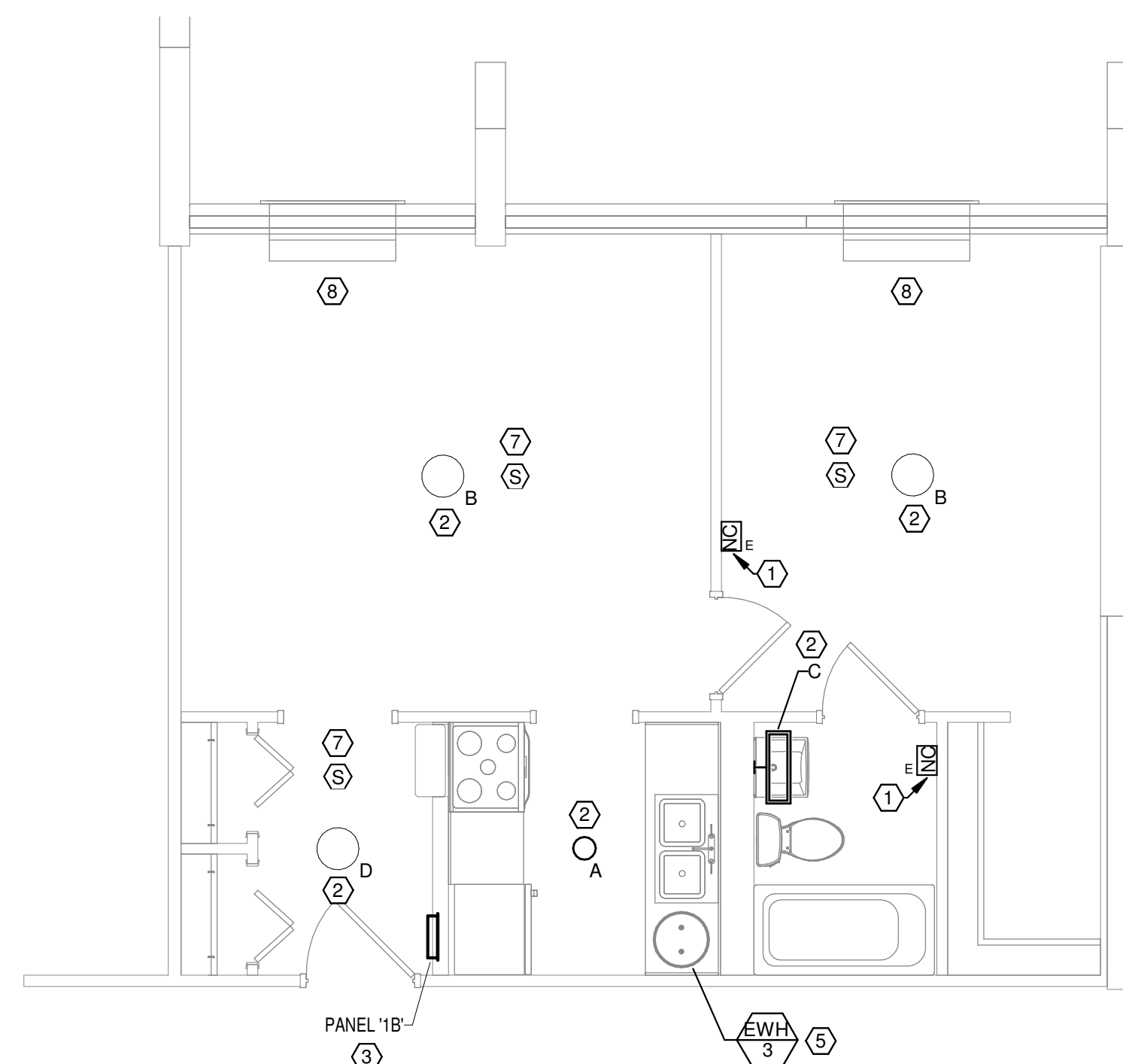
**1 ENLARGED PLAN - STUDIO 1 UNIT - DEMO**  
E1.601 1/4" = 1'-0"



**3 ENLARGED PLAN - STUDIO 1 UNIT**  
E1.601 1/4" = 1'-0"



**2 ENLARGED PLAN - 1 BR UNIT - DEMO**  
E1.601 1/4" = 1'-0"



**4 ENLARGED PLAN - 1 BR UNIT**  
E1.601 1/4" = 1'-0"

**GENERAL NOTES**

- CONNECT DEVICE AND EQUIPMENT CIRCUITS TO SAME CIRCUIT AS PREVIOUSLY INDICATED. REFER TO PANELBOARD SCHEDULES FOR BREAKER SIZES AND ADDITIONAL INFORMATION.
- CONDUCTORS SHALL BE SIZED PER NEC ACCORDING TO THE ASSOCIATED CIRCUIT BREAKER RATING.
- LOCATIONS OF EQUIPMENT AND DEVICES SHOWN ARE APPROXIMATE. CONTRACTOR SHALL FIELD VERIFY ALL LOCATIONS AND COORDINATE WITH ARCHITECTURAL ELEVATIONS, AS WELL AS NEC DEVICE SPACING REQUIREMENTS. COMPLY WITH NEC REQUIRED WORKING CLEARANCES FOR ALL EQUIPMENT INSTALLATIONS. MAKE ALL MODIFICATIONS AND PROVIDE ALL NECESSARY WORK AND EQUIPMENT TO MOUNT ELECTRICAL EQUIPMENT IN GENERAL LOCATIONS SHOWN.
- PROVIDE GROUNDING PER NEC FOR ALL EQUIPMENT AND DEVICES.
- ALL NEW 15A AND 20A RECEPTACLES SHALL BE TAMPER-RESISTANT TYPE.
- MOUNT ALL DEVICES IN SHARED WALL BETWEEN DWELLING UNITS A MINIMUM OF ONE STUD APART.
- PROVIDE UNITS WITH 120V SINGE-STATION SMOKE ALARMS WITH BATTERY BACK-UP. CONNECT TO NEAREST 120V, 20A GENERAL PURPOSE CIRCUIT AHEAD OF ALL SWITCHING DEVICES AND GFI PROTECTED DEVICES.
- REFER TO ARCHITECTURAL PLANS FOR LOCATIONS OF HEARING AND VISUALLY IMPAIRED TYPE DWELLING UNITS. PROVIDE DESIGNATED UNITS WITH SYSTEMS, DEVICES, AND FEATURES AS SHOWN IN PLANS AND ANNOTATED IN ADA STANDARDS.
- UNITS DESIGNATED AS ADA-TYPE OR FOR HEARING AND VISUALLY IMPAIRED OCCUPANTS TO BE PROVIDED WITH A FIRE ALARM HORN-STROBE NOTIFICATION DEVICE IN EACH BEDROOM AND LIVING AREA, AS WELL AS A STROBE IN EACH BATHROOM. ALL OTHER DWELLING UNITS TO CONTAIN HORN DEVICE IN EACH BEDROOM AND LIVING AREA. ALL HORNS AND HORN-STROBES SHALL PRODUCE A LOW FREQUENCY ALARM SIGNAL, COMPLYING WITH NFPA 72 18.4.6.
- ELECTRICAL PANELS, DEVICES, AND CONTROLS SHALL MEET ALL MOUNTING REQUIREMENTS AS DESIGNATED IN ADA STANDARDS FOR ALL MOBILITY ACCESSIBLE DWELLING UNITS.
- COORDINATE LAYOUT AND INSTALLATION OF LOAD CENTERS AND COMPONENTS WITH OTHER CONSTRUCTION THAT PENETRATES WALLS OR IS SUPPORTED BY THEM, INCLUDING ELECTRICAL AND OTHER TYPES OF EQUIPMENT, RACEWAYS, PIPING, ENCLOSURES TO WORKSPACE CLEARANCE REQUIREMENTS, AND ADJACENT SURFACES. MAINTAIN REQUIRED WORKSPACE CLEARANCES AND REQUIRED CLEARANCES FOR EQUIPMENT ACCESS DOORS AND PANELS.
- LOAD CENTERS BEING REPLACED SHALL BE LISTED AND LABELED AS DEFINED IN NFPA 70, BY A QUALIFIED TESTING AGENCY, AND MARKED FOR ITS INTENDED LOCATION AND APPLICATION. LOAD CENTER BASIS OF DESIGN IS SQUARE D HOMELINE SERIES, 120/240V SINGLE PHASE, 125 AMP MAIN BREAKER, 24 CIRCUIT LOAD CENTER.
- CONTRACTOR TO COORDINATE WITH LOW VOLTAGE VENDOR REGARDING ALL INSTALLATION REQUIREMENTS FOR NURSE CALL SYSTEM AND PROVIDE RACEWAYS, CONDUCTORS, REPEATERS, DEVICES AND OTHER COMPONENTS AS REQUIRED BY THE SYSTEM MANUFACTURER FOR A COMPLETE INSTALLATION.

**KEYED NOTES**

- PROVIDE 3/4 INCH EMT STUBBED TO ABOVE CEILING, WITH FOURSQUARE BOX AND SINGLE GANG MUD RING FOR NURSE CALL DEVICE. VERIFY EXACT REQUIREMENTS WITH LOW VOLTAGE CONSULTANT.
- NEW LED LIGHTING FIXTURE INSTALLED IN SAME LOCATION AS EXISTING LIGHT FIXTURES. REFER TO LUMINAIRE SCHEDULE FOR ADDITIONAL INFORMATION ABOUT LIGHTING FIXTURES.
- NEW ELECTRICAL LOAD CENTER. INSTALL NEW LOAD CENTER IN SAME LOCATION AS PREVIOUS.
- NEW LOCATION FOR EXISTING LOAD CENTER. INSTALL JUNCTION BOX AT EXISTING LOAD CENTER LOCATION AND EXTEND CONDUCTORS FROM JUNCTION BOX TO NEW LOAD CENTER LOCATION.
- REMOVE SWITCH AND CONTROL WIRES ASSOCIATED WITH WATER HEATER IN THEIR ENTIRETY. POWER CONDUCTORS SUPPLYING WATER HEATER SHALL BE EXISTING TO REMAIN. PROVIDE DISCONNECTING MEANS PER MANUFACTURER'S INSTALLATION LITERATURE FOR NEW WATER HEATER. COORDINATE WITH PLUMBING FLOOR PLANS TO DETERMINE WHICH UNITS RECEIVE NEW WATER HEATERS, TYPICAL FOR ALL DWELLING UNITS.
- REMOVE SWITCH AND CONTROL WIRES ASSOCIATED WITH GARBAGE DISPOSAL BACK TO JUNCTION BOX. PROVIDE NEW BLANK PLATE OVER EXISTING JUNCTION BOX SERVING GARBAGE DISPOSAL.
- UNITS 204, 214, 310, 315, 405, 414: PROVIDE NEW HUD COMPLIANT 120V SINGLE-STATION SMOKE ALARM WITH BATTERY BACK-UP AND CONNECT TO NEAREST 120V, 20A GENERAL PURPOSE CIRCUIT AHEAD OF ALL SWITCHES AND GFI PROTECTED DEVICES. MAINTAIN 36" CLEARANCE FROM HVAC SUPPLY GRILLS AND CEILING FANS. CONNECT ALARMS SO THAT ANY ALARM WILL CAUSE ALL ALARMS IN THAT UNIT TO SOUND. SMOKE ALARMS IN ALL OTHER DWELLING UNITS NOT LISTED ABOVE SHALL BE EXISTING TO REMAIN.
- COORDINATE WITH MECHANICAL FLOOR PLANS TO DETERMINE WHICH UNITS RECEIVE NEW PTAC UNITS. TYPICAL FOR ALL DWELLING UNITS. INSTALL NEW UNIT PER MANUFACTURER'S LITERATURE. PROVIDE ALL OVERCURRENT DEVICES AND DISCONNECTING MEANS AND MAKE NECESSARY UPGRADES TO CIRCUIT AND PANEL AS NEEDED FOR PROPER INSTALLATION OF PTAC UNITS.

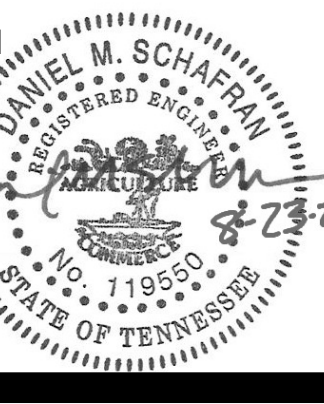


Project Name  
**Northgate Terrace Renovation**

4301 White Springs Road  
Knoxville, TN 37917

Client  
**Knoxville's Community Development Corporation**

901 N. Broadway Knoxville, TN 37917



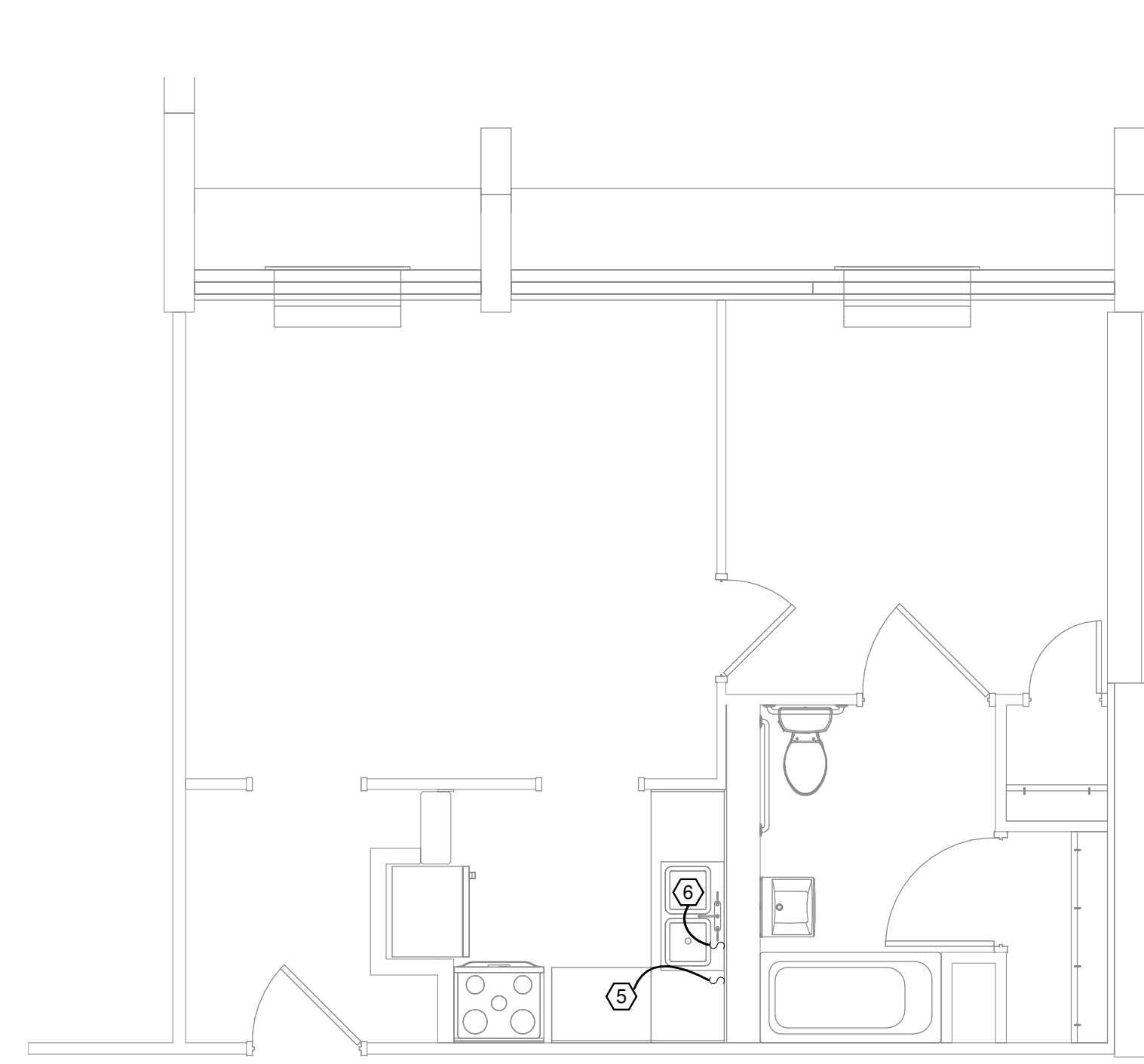
Revisions

No.	Description	Date
1	Addendum 1	09/10/21

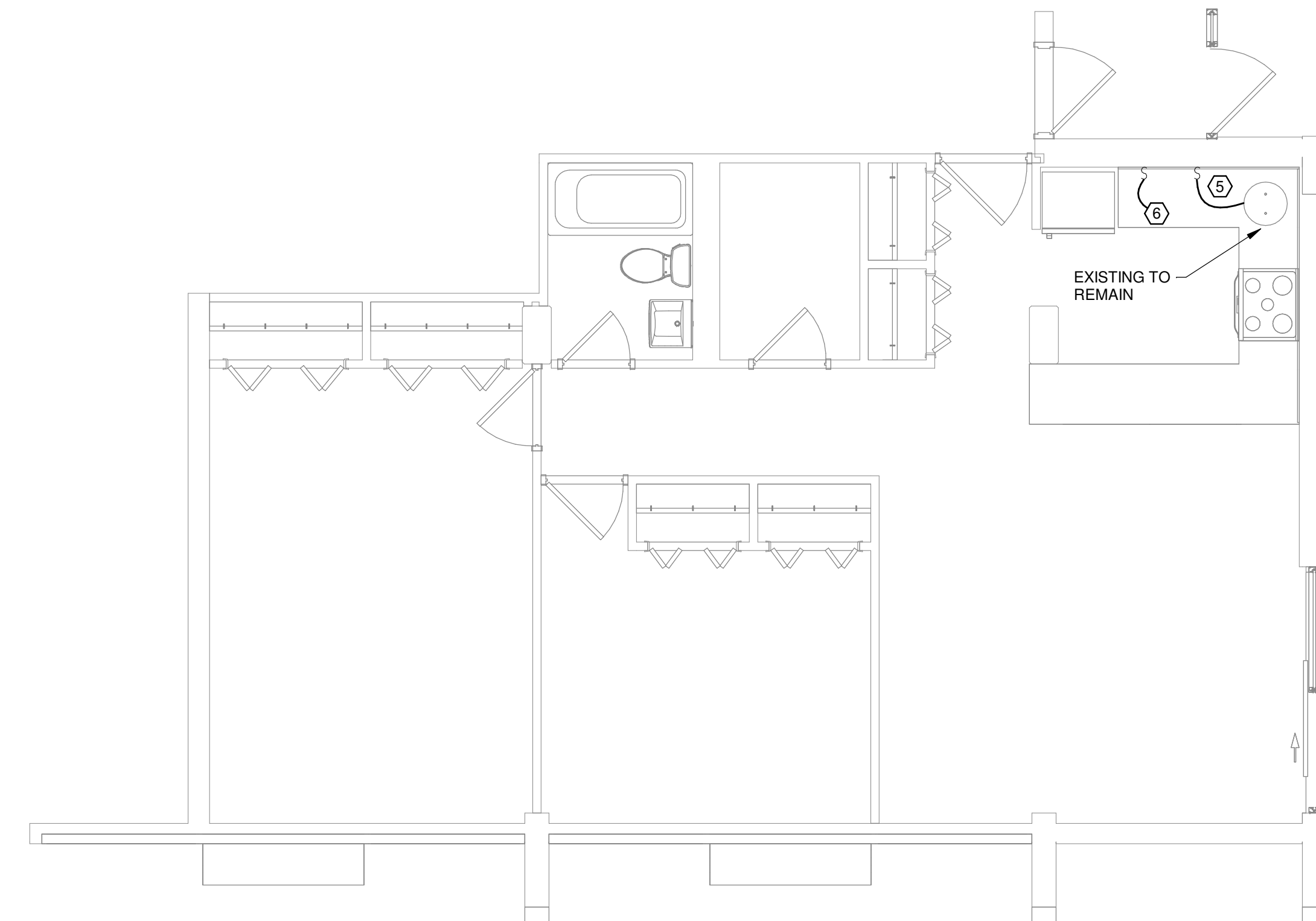
**ENLARGED UNIT PLANS**

Project number 21KC01  
Date Aug. 23, 2021

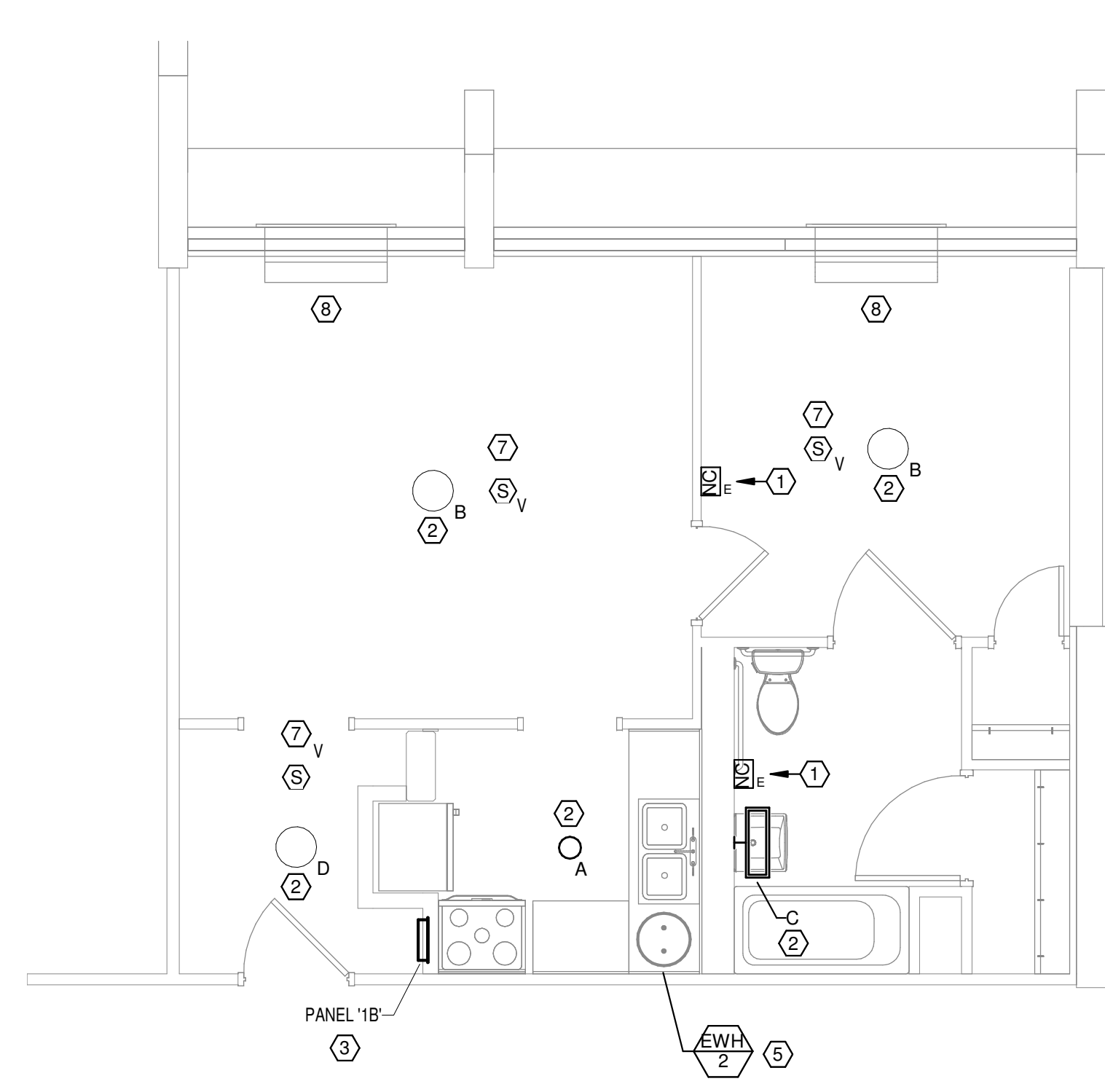
**E1.601**  
Scale As indicated



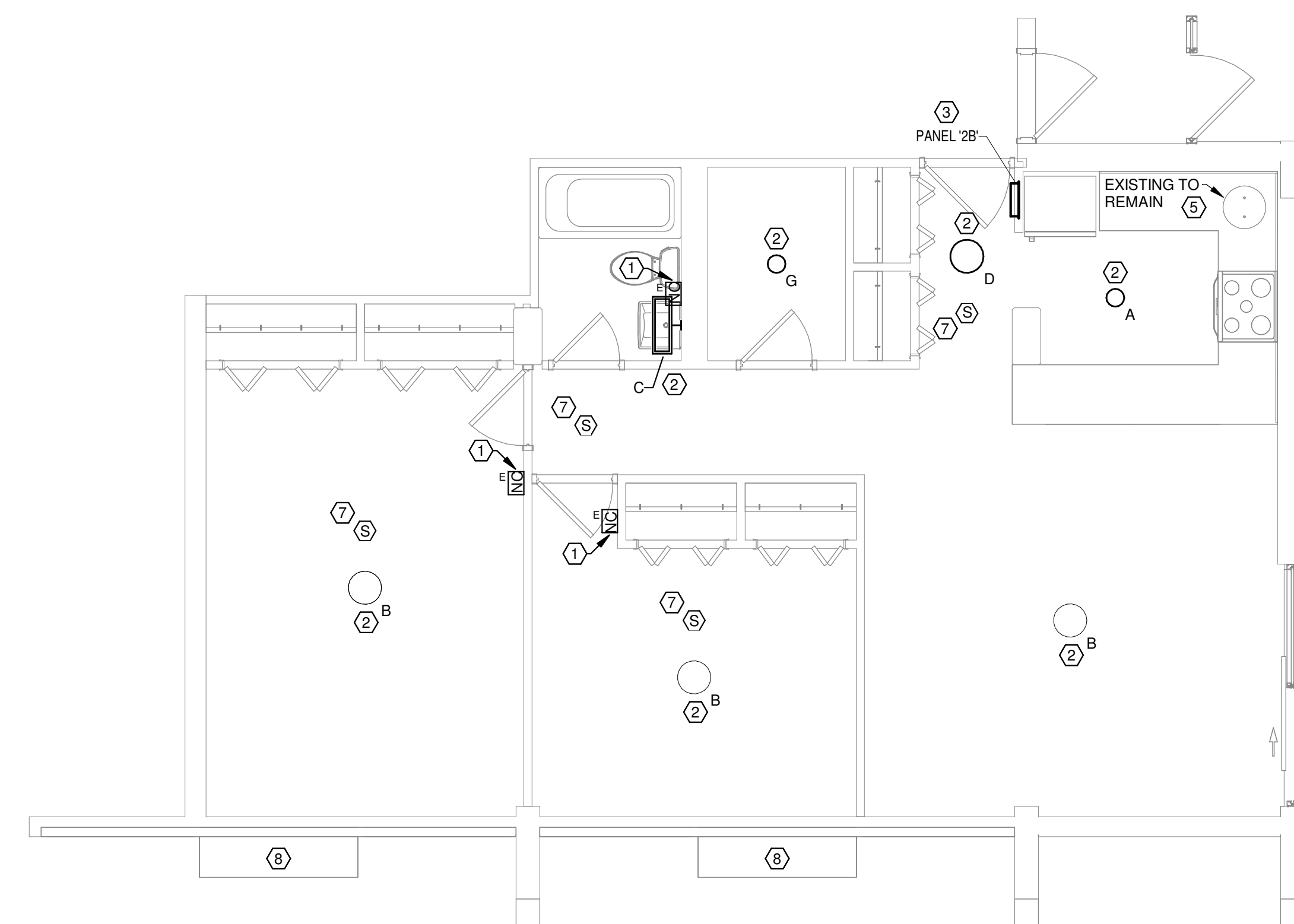
**1 ENLARGED PLAN - 1 BR ADA UNIT - DEMO**  
E1.602 1/4" = 1'-0"



**2 ENLARGED PLAN - 2 BR UNIT - DEMO**  
E1.602 1/4" = 1'-0"



**3 ENLARGED PLAN - 1 BR ADA UNIT**  
E1.602 1/4" = 1'-0"



**4 ENLARGED PLAN - 2 BR UNIT**  
E1.602 1/4" = 1'-0"

**GENERAL NOTES**

- CONNECT DEVICE AND EQUIPMENT CIRCUITS TO SAME CIRCUIT AS PREVIOUSLY INDICATED. REFER TO PANELBOARD SCHEDULES FOR BREAKER SIZES AND ADDITIONAL INFORMATION.
- CONDUCTORS SHALL BE SIZED PER NEC ACCORDING TO THE ASSOCIATED CIRCUIT BREAKER RATING.
- LOCATIONS OF EQUIPMENT AND DEVICES SHOWN ARE APPROXIMATE. CONTRACTOR SHALL FIELD VERIFY ALL LOCATIONS AND COORDINATE WITH ARCHITECTURAL ELEVATIONS, AS WELL AS NEC DEVICE SPACING REQUIREMENTS. COMPLY WITH NEC REQUIRED WORKING CLEARANCES FOR ALL EQUIPMENT INSTALLATIONS. MAKE ALL MODIFICATIONS AND PROVIDE ALL NECESSARY WORK AND EQUIPMENT TO MOUNT ELECTRICAL EQUIPMENT IN GENERAL LOCATIONS SHOWN.
- PROVIDE GROUNDING PER NEC FOR ALL EQUIPMENT AND DEVICES.
- ALL NEW 15A AND 20A RECEPTACLES SHALL BE TAMPER-RESISTANT TYPE.
- MOUNT ALL DEVICES IN SHARED WALL BETWEEN DWELLING UNITS A MINIMUM OF ONE STUD APART.
- PROVIDE UNITS WITH 120V SINGE-STATION SMOKE ALARMS WITH BATTERY BACK-UP. CONNECT TO NEAREST 120V, 20A GENERAL PURPOSE CIRCUIT AHEAD OF ALL SWITCHING DEVICES AND GFI PROTECTED DEVICES.
- REFER TO ARCHITECTURAL PLANS FOR LOCATIONS OF HEARING AND VISUALLY IMPAIRED TYPE DWELLING UNITS. PROVIDE DESIGNATED UNITS WITH SYSTEMS, DEVICES, AND FEATURES AS SHOWN IN PLANS AND ANNOTATED IN ADA STANDARDS.
- UNITS DESIGNATED AS ADA-TYPE OR FOR HEARING AND VISUALLY IMPAIRED OCCUPANTS TO BE PROVIDED WITH A FIRE ALARM HORN-STROBE NOTIFICATION DEVICE IN EACH BEDROOM AND LIVING AREA, AS WELL AS A STROBE IN EACH BATHROOM. ALL OTHER DWELLING UNITS TO CONTAIN HORN DEVICE IN EACH BEDROOM AND LIVING AREA. ALL HORNS AND HORN-STROBES SHALL PRODUCE A LOW FREQUENCY ALARM SIGNAL, COMPLYING WITH NFPA 72 18.4.6.
- ELECTRICAL PANELS, DEVICES, AND CONTROLS SHALL MEET ALL MOUNTING REQUIREMENTS AS DESIGNATED IN ADA STANDARDS FOR ALL MOBILITY ACCESSIBLE DWELLING UNITS.
- COORDINATE LAYOUT AND INSTALLATION OF LOAD CENTERS AND COMPONENTS WITH OTHER CONSTRUCTION THAT PENETRATES WALLS OR IS SUPPORTED BY THEM, INCLUDING ELECTRICAL AND OTHER TYPES OF EQUIPMENT, RACEWAYS, PIPING, ENCLOSURES TO WORKSPACE CLEARANCE REQUIREMENTS, AND ADJACENT SURFACES. MAINTAIN REQUIRED WORKSPACE CLEARANCES AND REQUIRED CLEARANCES FOR EQUIPMENT ACCESS DOORS AND PANELS.
- LOAD CENTERS BEING REPLACED SHALL BE LISTED AND LABELED AS DEFINED IN NFPA 70, BY A QUALIFIED TESTING AGENCY, AND MARKED FOR ITS INTENDED LOCATION AND APPLICATION. LOAD CENTER BASIS OF DESIGN IS SQUARE D, HOMELINE SERIES, 120/240V SINGLE PHASE, 125 AMP MAIN BREAKER, 24 CIRCUIT LOAD CENTER.
- CONTRACTOR TO COORDINATE WITH LOW VOLTAGE VENDOR REGARDING ALL INSTALLATION REQUIREMENTS FOR NURSE CALL SYSTEM AND PROVIDE RACEWAYS, CONDUCTORS, REPEATERS, DEVICES AND OTHER COMPONENTS AS REQUIRED BY THE SYSTEM MANUFACTURER FOR A COMPLETE INSTALLATION.

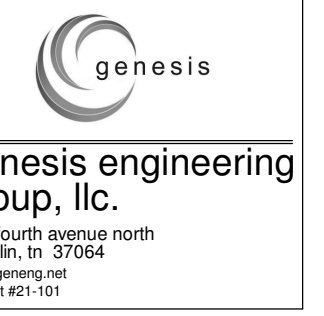
**KEYED NOTES**

- PROVIDE 3/4 INCH EMT STUBBED TO ABOVE CEILING, WITH FOUR SQUARE BOX AND SINGLE GANG MUD RING FOR NURSE CALL DEVICE. VERIFY EXACT REQUIREMENTS WITH LOW VOLTAGE CONSULTANT.
- NEW LED LIGHTING FIXTURE INSTALLED IN SAME LOCATION AS EXISTING LIGHT FIXTURES. CONNECT NEW LIGHT TO SAME CIRCUIT/SWITCH AS PREVIOUS. REFER TO LUMINAIRE SCHEDULE FOR ADDITIONAL INFORMATION.
- NEW ELECTRICAL PANEL. INSTALL NEW PANEL IN SAME LOCATION AS EXISTING PANEL.
- NOT USED.
- REMOVE SWITCH AND CONTROL WIRES ASSOCIATED WITH WATER HEATER IN THEIR ENTIRETY. POWER CONDUCTORS SUPPLYING WATER HEATER SHALL BE EXISTING TO REMAIN. PROVIDE DISCONNECTING MEANS PER MANUFACTURER'S INSTALLATION LITERATURE FOR NEW WATER HEATER. COORDINATE WITH PLUMBING FLOOR PLANS TO DETERMINE WHICH UNITS RECEIVE NEW WATER HEATERS, TYPICAL FOR ALL DWELLING UNITS.
- REMOVE SWITCH AND CONTROL WIRES ASSOCIATED WITH GARBAGE DISPOSAL BACK TO JUNCTION BOX. PROVIDE NEW BLANK PLATE OVER EXISTING JUNCTION BOX SERVING GARBAGE DISPOSAL.
- UNITS 204, 214, 310, 315, 405, 414; PROVIDE NEW HUD COMPLIANT 120V SINGLE-STATION SMOKE ALARM WITH BATTERY BACK-UP AND CONNECT TO NEAREST 120 V, 20 A GENERAL PURPOSE CIRCUIT. AHEAD OF ALL SWITCHES AND GFI PROTECTED DEVICES. MAINTAIN 36" CLEARANCE FROM HVAC SUPPLY GRILLS AND CEILING FANS. CONNECT ALARMS SO THAT ANY ALARM WILL CAUSE ALL ALARMS IN THAT UNIT TO SOUND. SMOKE ALARMS IN ALL OTHER DWELLING UNITS NOT LISTED ABOVE SHALL BE EXISTING TO REMAIN.
- COORDINATE WITH MECHANICAL FLOOR PLANS TO DETERMINE WHICH UNITS RECEIVE NEW PTAC UNITS. TYPICAL FOR ALL DWELLING UNITS. INSTALL NEW UNIT PER MANUFACTURER'S LITERATURE. PROVIDE ALL OVERCURRENT DEVICES AND DISCONNECTING MEANS AND MAKE NECESSARY UPGRADES TO CIRCUIT AND PANEL AS NEEDED FOR PROPER INSTALLATION OF PTAC UNITS.



**STUDIO A**  
architecture  
2330 frankfort ave  
louisville, ky 40206  
p: (502) 589-8007  
f: (502) 589-8004  
www.studioaarch.com

**Consultants**



**genesis engineering**  
group, llc.  
134 South Main Street  
Nashville, TN 37204  
www.genesiseng.com  
project 21-001

**Project Name**

**Northgate**  
**Terrace**  
**Renovation**

4301 Whittle Springs Road  
Knoxville, TN 37917

**Client**

**Knoxville's**  
**Community**  
**Development**  
**Corporation**

901 N. Broadway Knoxville, TN  
37917



**Revisions**

No.	Description	Date
1	Addendum 1	09/10/21

**ENLARGED**  
**UNIT PLANS**

Project number 21KC01  
Date Aug. 23, 2021

**E1.602**

Scale As indicated