



**ADDENDUM NO. I**

**DATE:** November 12, 2021  
**TO:** All Potential Proposers  
**FROM:** James McKeehan, Assistant Purchasing Agent, City of Knoxville  
**SUBJECT:** Addendum No. I to ITB - Traffic Signal Cantilever Supports  
**PROPOSALS TO BE OPENED:** December 6, 2021 at 11:00 am Eastern Time

This addendum is being published to provide clarification regarding the above referenced ITB. This addendum becomes a part of the contract documents and modifies the original specifications as follows:

1. Do you have a plan set for this project?

**Response: Please refer to the plans included on the following pages**

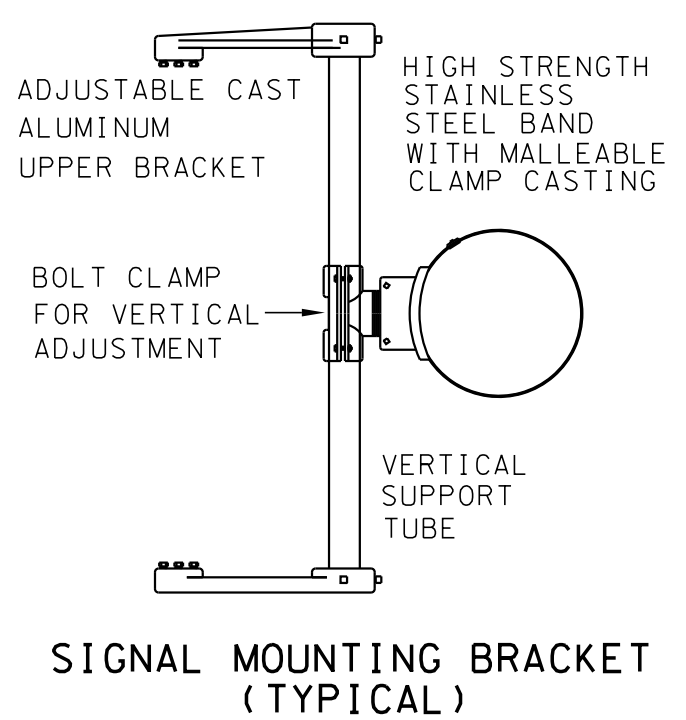
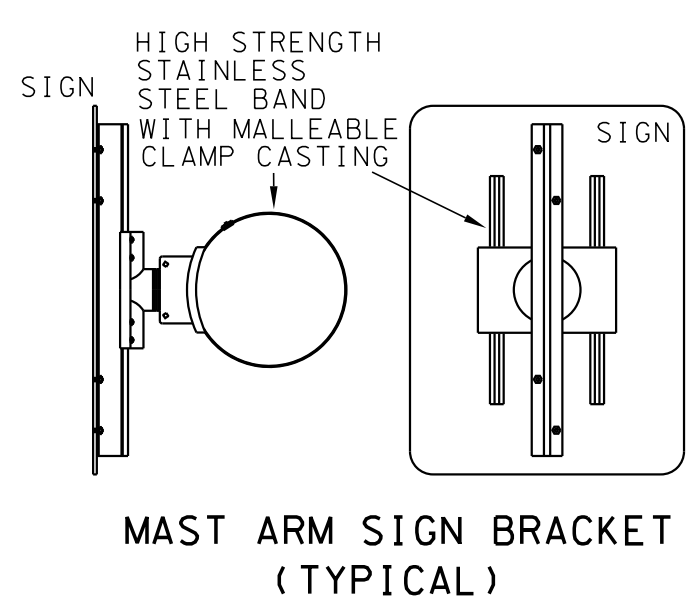
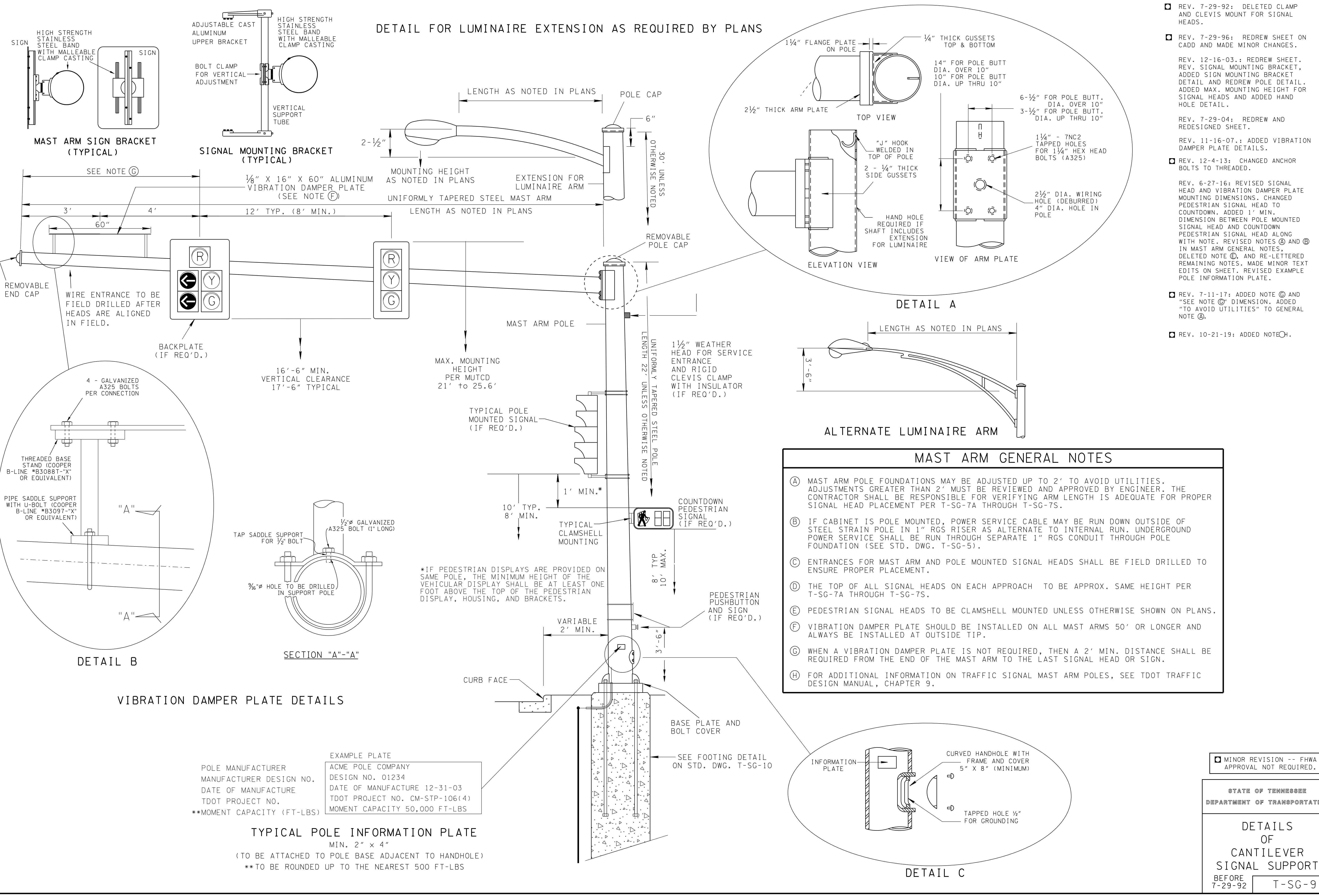
2. The Specifications state "Provide cast steel bases with removable cast iron covers for anchor bolts and tapped holes for attaching covers with hex head cap screws". Can you provide drawing of this cover?

**Response: Please refer to the drawing included in this addendum. Note that the dimensions of the base will change by the pole size. The drawing is a representation to match the other streetscape projects performed by the City.**

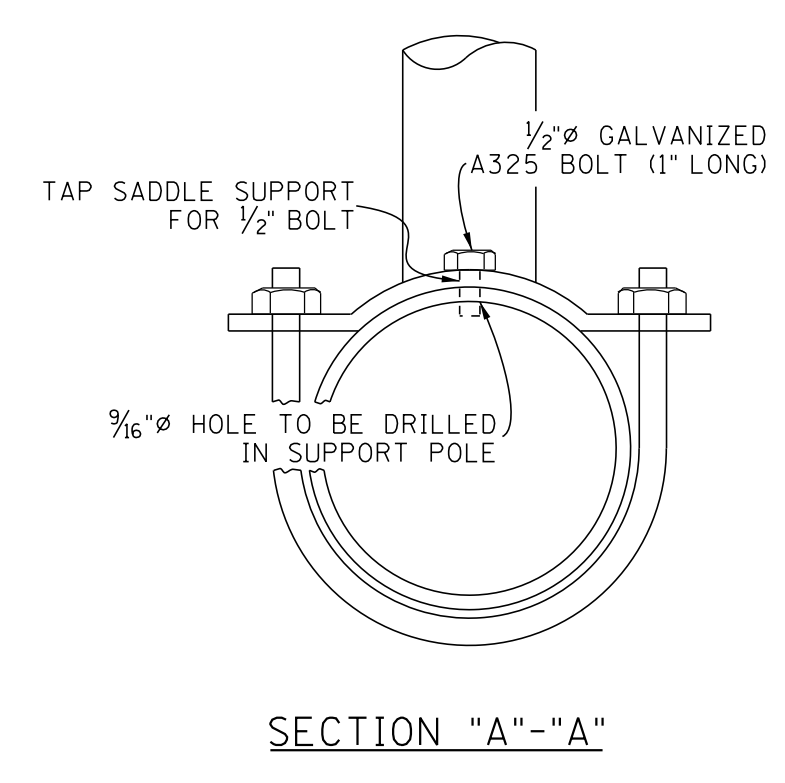
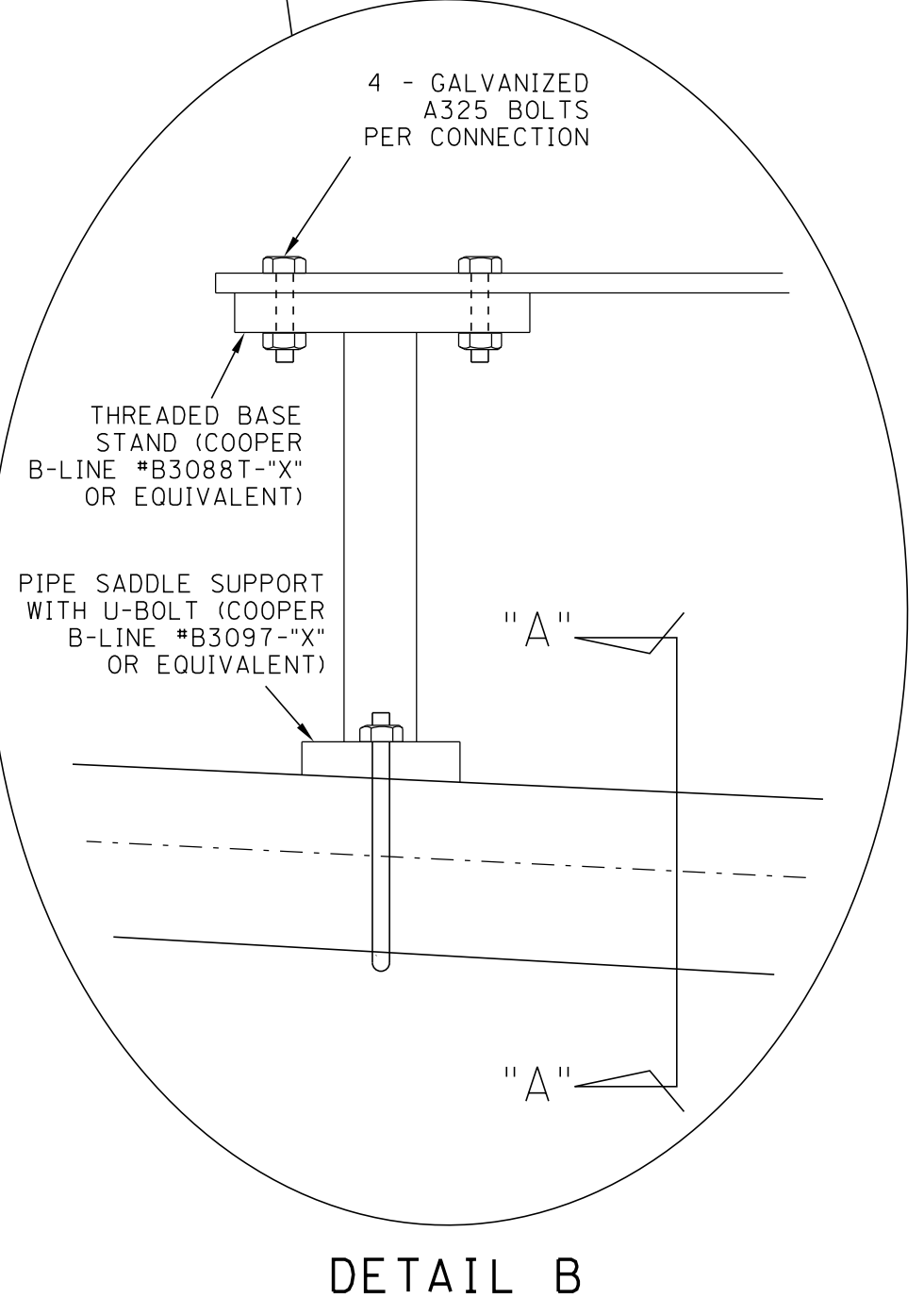
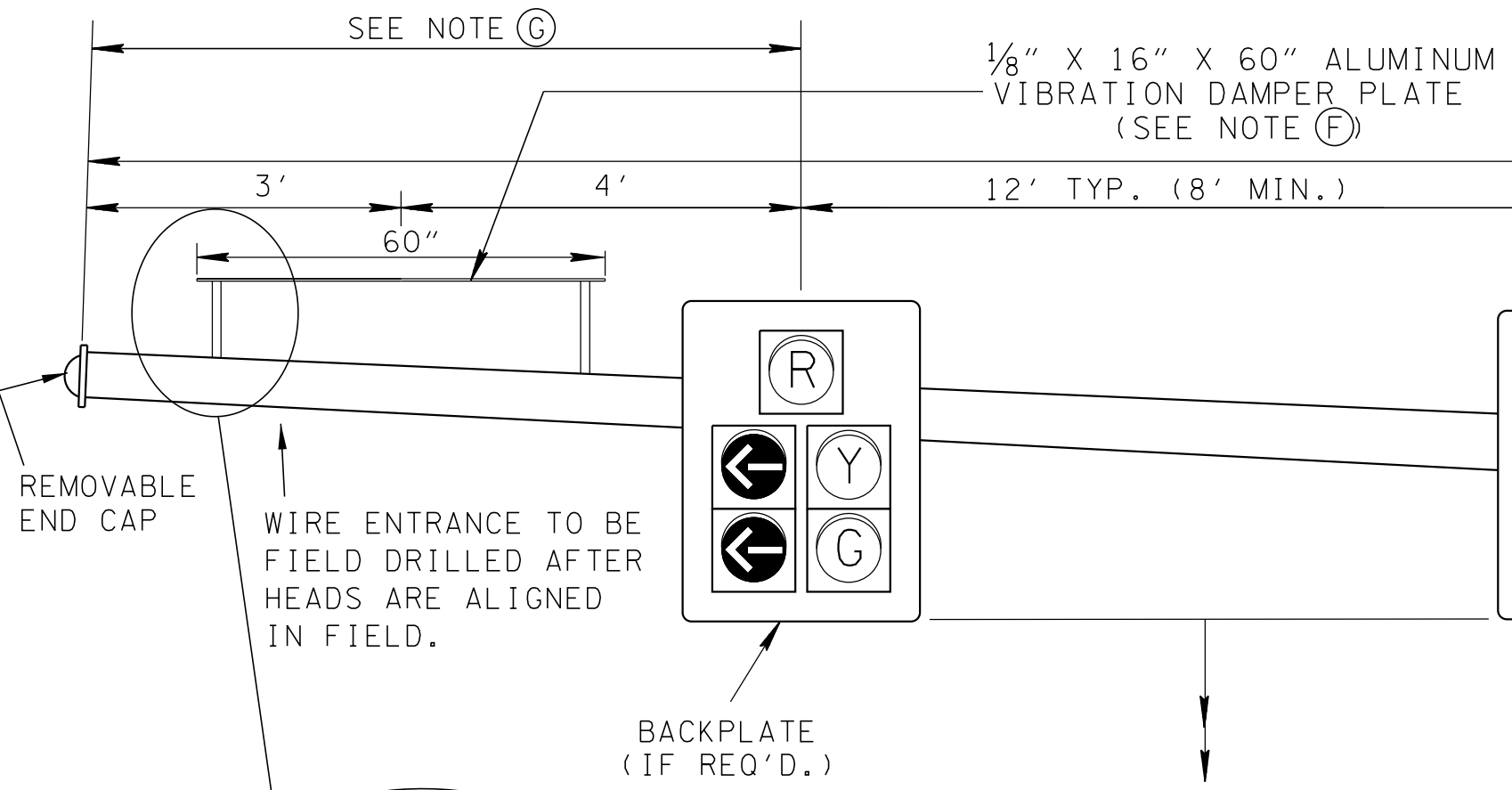
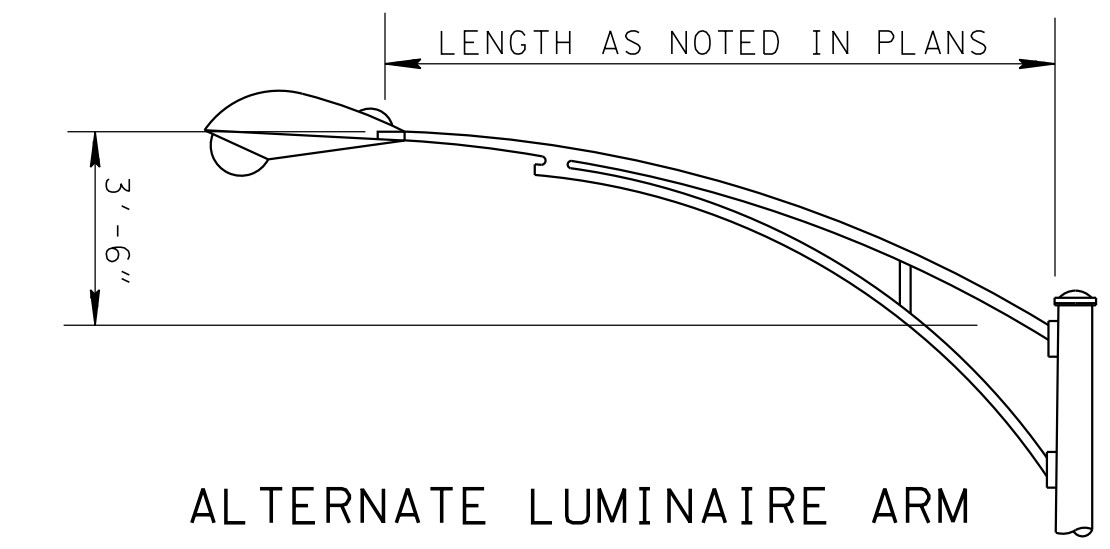
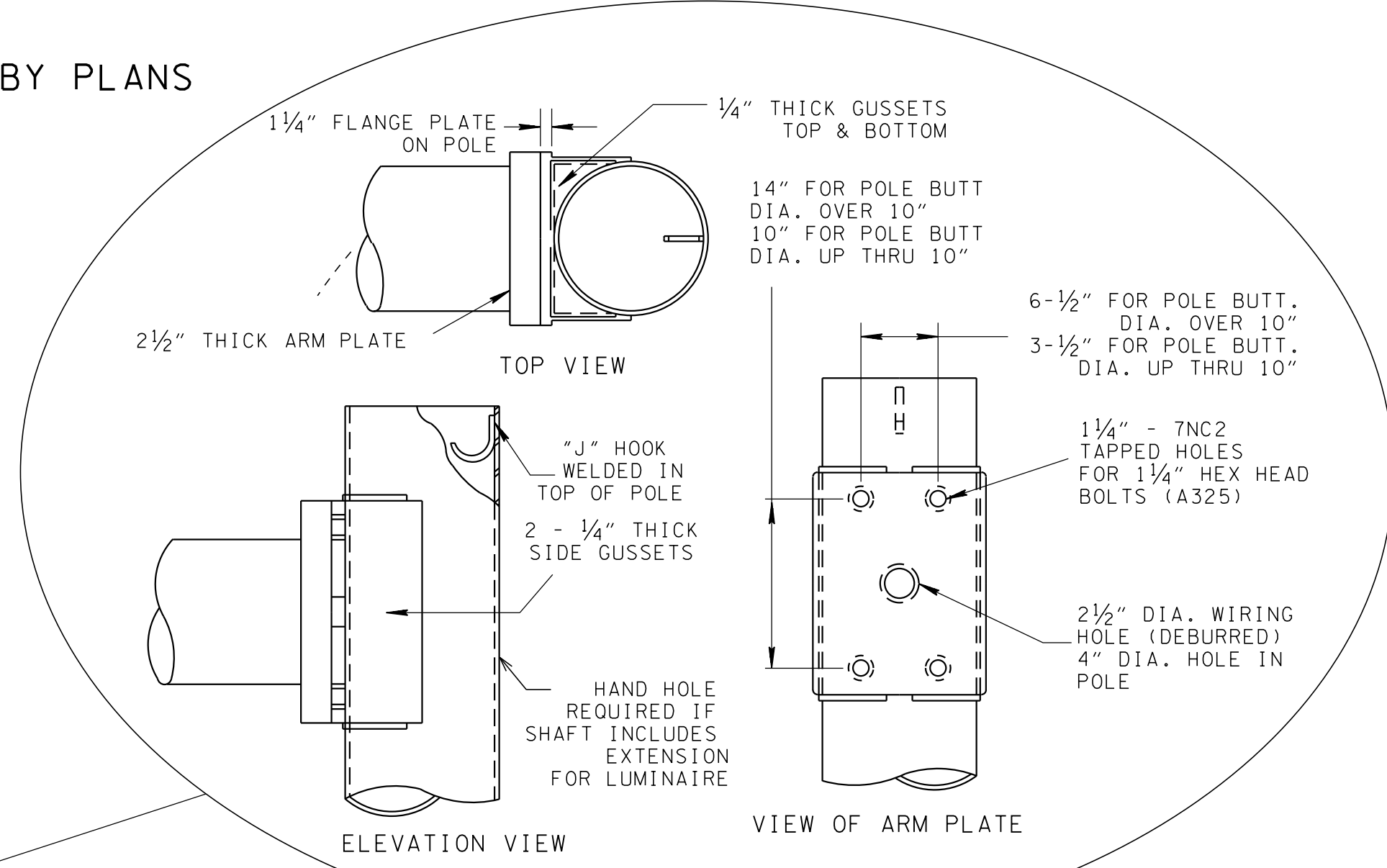
3. Can this cover be aluminum or cast aluminum instead of cast iron?

**Response: The material may be either aluminum, cast aluminum, or cast iron.**

0/17/2019 14:46:39 PM P:\Traffic Operations Division\Traffic\DESIGN\Standard Drawings\Signals (SG)\NIN PROGRESS\TSG9\_083009.DGN



**DETAIL FOR LUMINAIRE EXTENSION AS REQUIRED BY PLANS**

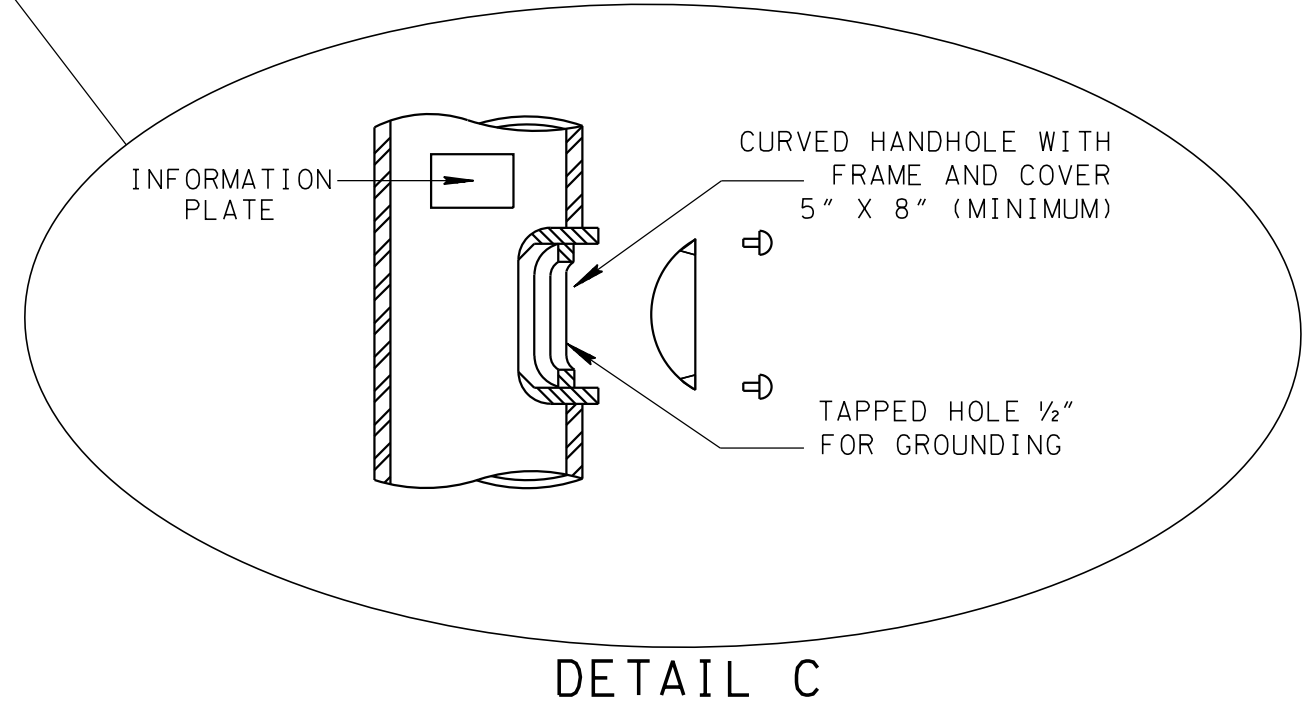


**VIBRATION DAMPER PLATE DETAILS**

POLE MANUFACTURER	ACME POLE COMPANY
MANUFACTURER DESIGN NO.	DESIGN NO. 01234
DATE OF MANUFACTURE	DATE OF MANUFACTURE 12-31-03
TDOT PROJECT NO.	TDOT PROJECT NO. CM-STP-106(4)
**MOMENT CAPACITY (FT-LBS)	MOMENT CAPACITY 50,000 FT-LBS

**TYPICAL POLE INFORMATION PLATE**  
 MIN. 2" x 4"  
 (TO BE ATTACHED TO POLE BASE ADJACENT TO HANDHOLE)  
 \*\*TO BE ROUNDED UP TO THE NEAREST 500 FT-LBS

- MAST ARM GENERAL NOTES**
- (A) MAST ARM POLE FOUNDATIONS MAY BE ADJUSTED UP TO 2' TO AVOID UTILITIES. ADJUSTMENTS GREATER THAN 2' MUST BE REVIEWED AND APPROVED BY ENGINEER. THE CONTRACTOR SHALL BE RESPONSIBLE FOR VERIFYING ARM LENGTH IS ADEQUATE FOR PROPER SIGNAL HEAD PLACEMENT PER T-SG-7A THROUGH T-SG-7S.
  - (B) IF CABINET IS POLE MOUNTED, POWER SERVICE CABLE MAY BE RUN DOWN OUTSIDE OF STEEL STRAIN POLE IN 1" RGS RISER AS ALTERNATE TO INTERNAL RUN. UNDERGROUND POWER SERVICE SHALL BE RUN THROUGH SEPARATE 1" RGS CONDUIT THROUGH POLE FOUNDATION (SEE STD. DWG. T-SG-5).
  - (C) ENTRANCES FOR MAST ARM AND POLE MOUNTED SIGNAL HEADS SHALL BE FIELD DRILLED TO ENSURE PROPER PLACEMENT.
  - (D) THE TOP OF ALL SIGNAL HEADS ON EACH APPROACH TO BE APPROX. SAME HEIGHT PER T-SG-7A THROUGH T-SG-7S.
  - (E) PEDESTRIAN SIGNAL HEADS TO BE CLAMSHHELL MOUNTED UNLESS OTHERWISE SHOWN ON PLANS.
  - (F) VIBRATION DAMPER PLATE SHOULD BE INSTALLED ON ALL MAST ARMS 50' OR LONGER AND ALWAYS BE INSTALLED AT OUTSIDE TIP.
  - (G) WHEN A VIBRATION DAMPER PLATE IS NOT REQUIRED, THEN A 2' MIN. DISTANCE SHALL BE REQUIRED FROM THE END OF THE MAST ARM TO THE LAST SIGNAL HEAD OR SIGN.
  - (H) FOR ADDITIONAL INFORMATION ON TRAFFIC SIGNAL MAST ARM POLES, SEE TDOT TRAFFIC DESIGN MANUAL, CHAPTER 9.



- REV. 7-29-92: DELETED CLAMP AND CLEVIS MOUNT FOR SIGNAL HEADS.
- REV. 7-29-96: REDREW SHEET ON CADD AND MADE MINOR CHANGES.
- REV. 12-16-03.: REDREW SHEET. REV. SIGNAL MOUNTING BRACKET, ADDED SIGN MOUNTING BRACKET DETAIL AND REDREW POLE DETAIL. ADDED MAX. MOUNTING HEIGHT FOR SIGNAL HEADS AND ADDED HAND HOLE DETAIL.
- REV. 7-29-04: REDREW AND REDESIGNED SHEET.
- REV. 11-16-07.: ADDED VIBRATION DAMPER PLATE DETAILS.
- REV. 12-4-13: CHANGED ANCHOR BOLTS TO THREADED.
- REV. 6-27-16: REVISED SIGNAL HEAD AND VIBRATION DAMPER PLATE MOUNTING DIMENSIONS. CHANGED PEDESTRIAN SIGNAL HEAD TO COUNTDOWN. ADDED 1' MIN. DIMENSION BETWEEN POLE MOUNTED SIGNAL HEAD AND COUNTDOWN PEDESTRIAN SIGNAL HEAD ALONG WITH NOTE. REVISED NOTES (A) AND (B) IN MAST ARM GENERAL NOTES, DELETED NOTE (C), AND RE-LETTERED REMAINING NOTES. MADE MINOR TEXT EDITS ON SHEET. REVISED EXAMPLE POLE INFORMATION PLATE.
- REV. 7-11-17: ADDED NOTE (C) AND "SEE NOTE (C)" DIMENSION. ADDED "TO AVOID UTILITIES" TO GENERAL NOTE (A).
- REV. 10-21-19: ADDED NOTE (H).

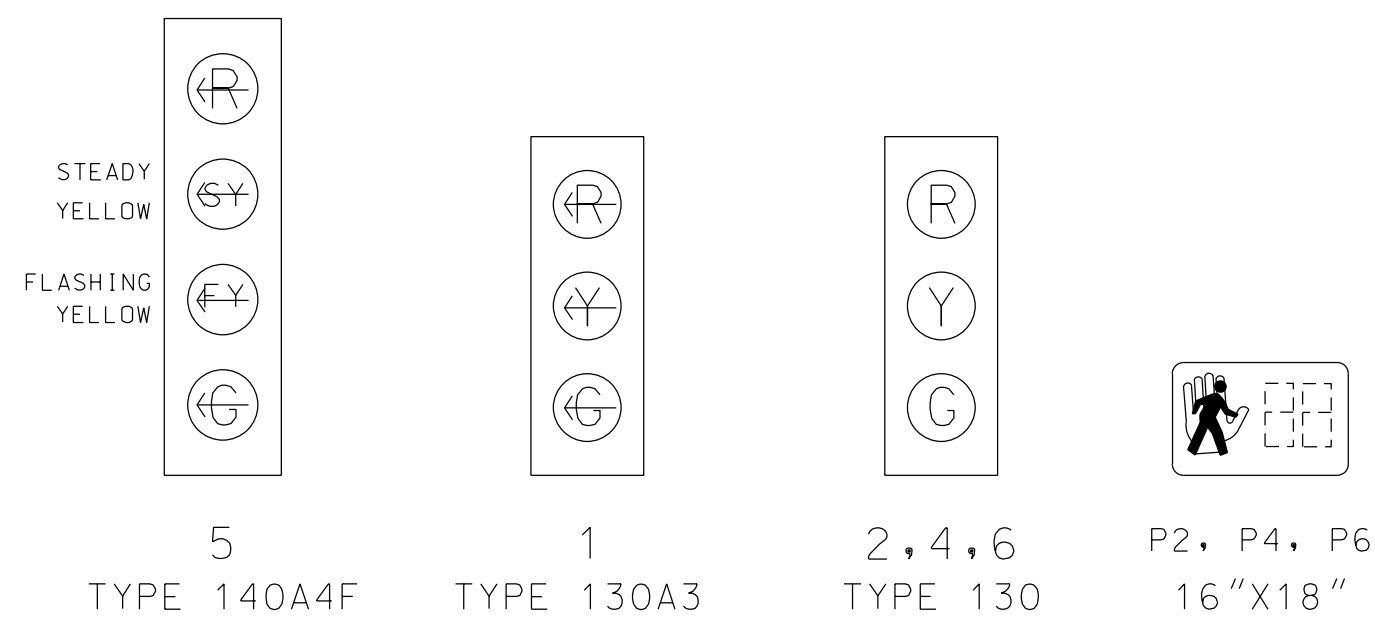
MINOR REVISION -- FHWA APPROVAL NOT REQUIRED.

STATE OF TENNESSEE  
 DEPARTMENT OF TRANSPORTATION

DETAILS  
 OF  
 CANTILEVER  
 SIGNAL SUPPORT

BEFORE T-SG-9  
 7-29-92

SIGNAL HEADS



SIGNAL POLE DATA

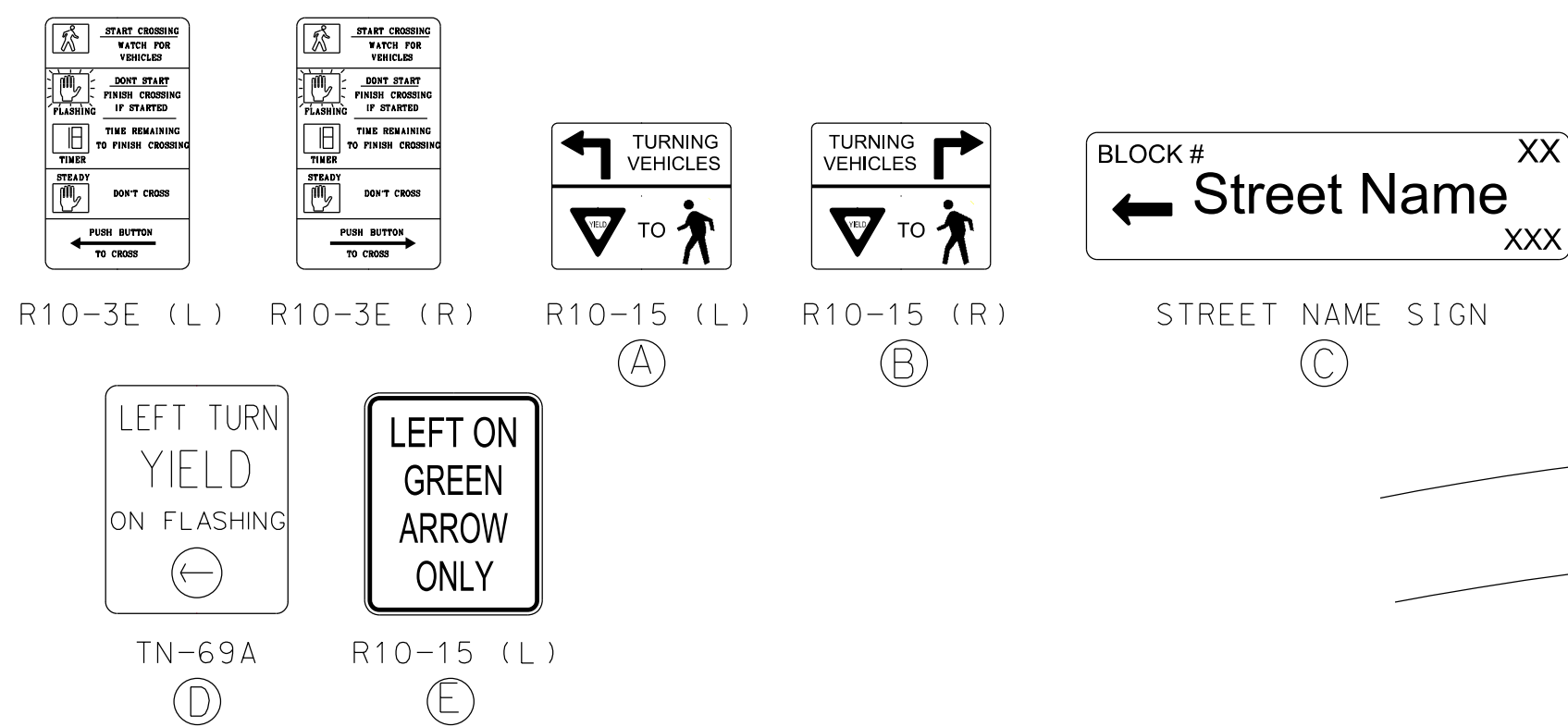
POLE NO.	ATTACH ELEV.	POLE HEIGHT	ARM LENGTH	FOOTING DEPTH
MA-1	19'	30'	50'	MIN 15'*
MA-2	19'	22'	35', 60'	MIN 15'*

\* FOOTING DEPTHS WILL BE BASED ON POLE MAX BENDING MOMENT FROM DESIGN AND COK FOUNDATION DESIGN REQUIREMENTS (CDK-SG-10)

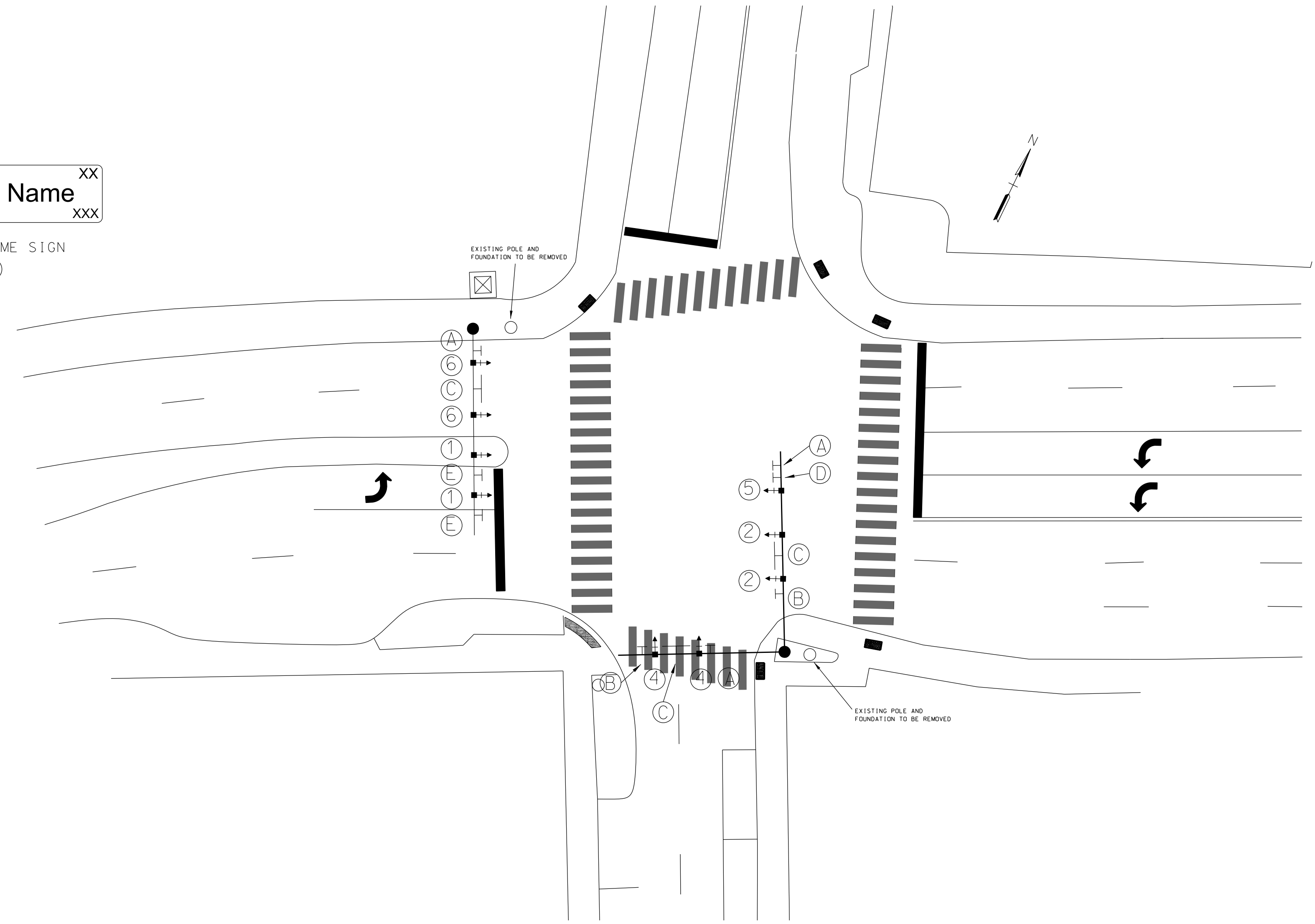
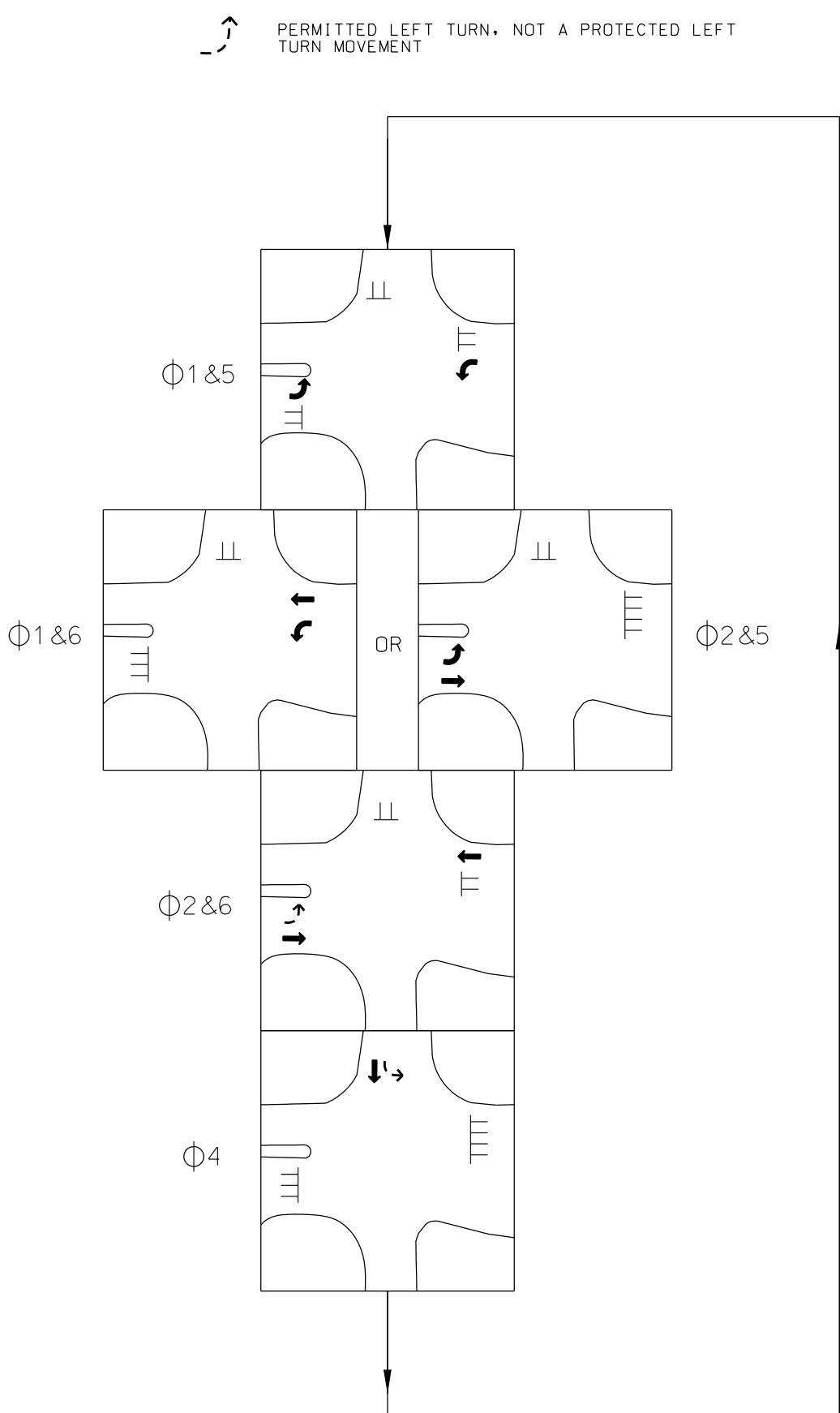
NO.	REVISIONS	
	DATE	DESCRIPTION

CONCEPT PLAN

SIGN SCHEDULE

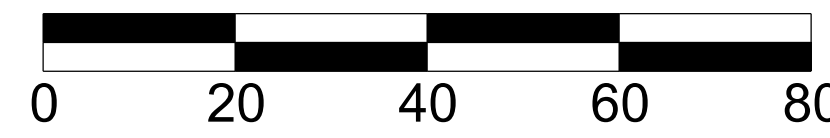


PHASING DIAGRAM  
N. T. S.



LEGEND

- PROPOSED STRAIN POLE AND MAST ARM SUPPORT
- ☒ EXISTING PAD MOUNTED CONTROLLER CABINET
- ➔ PROPOSED SIGNAL HEAD W/ BACKPLATES
- PROPOSED VIDEO DETECTION
- ⊥ PROPOSED SIGN
- ➔➔ PEDESTRIAN POLE, SIGNAL, W/ AUDIBLE PUSH BUTTON
- ▣ PROPOSED UNDERGROUND CONDUIT W/ QUANTITY, SIZE, TYPE
- ➔ EMERGENCY VEHICLE PREEMPTION
- EXISTING SIGNAL POLE AND FOUNDATION



Summit Hill Drive Pole Replacement Project

District 6, City Blocks: 05022, 07264, 08202



Drawn by: \_\_\_\_\_

Designed by: \_\_\_\_\_

Approved by: \_\_\_\_\_

Scale: \_\_\_\_\_

Date: \_\_\_\_\_

SHEET 5





SIGNAL POLE DATA

POLE NO.	ATTACH ELEV.	POLE HEIGHT	ARM LENGTH	FOOTING DEPTH
MA-1	19'	22'	40'	MIN 15'*
MA-2	19'	22'	35'	MIN 15'*
MA-3	19'	22'	30'	MIN 15'*

\* FOOTING DEPTHS WILL BE BASED ON POLE MAX BENDING MOMENT FROM DESIGN AND COK FOUNDATION DESIGN REQUIREMENTS (COK-SG-10)

NO.	REVISIONS	
	DATE	DESCRIPTION

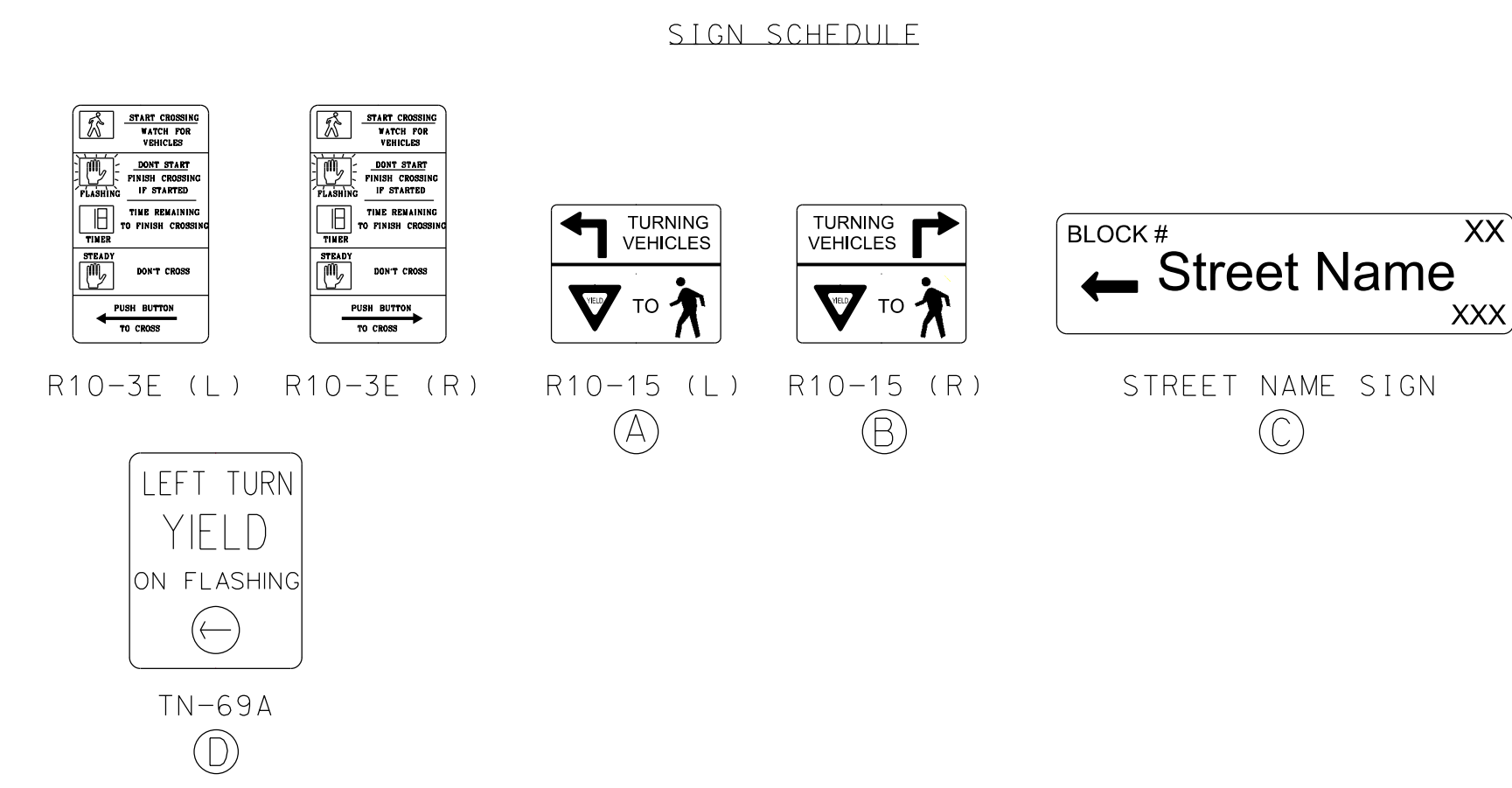
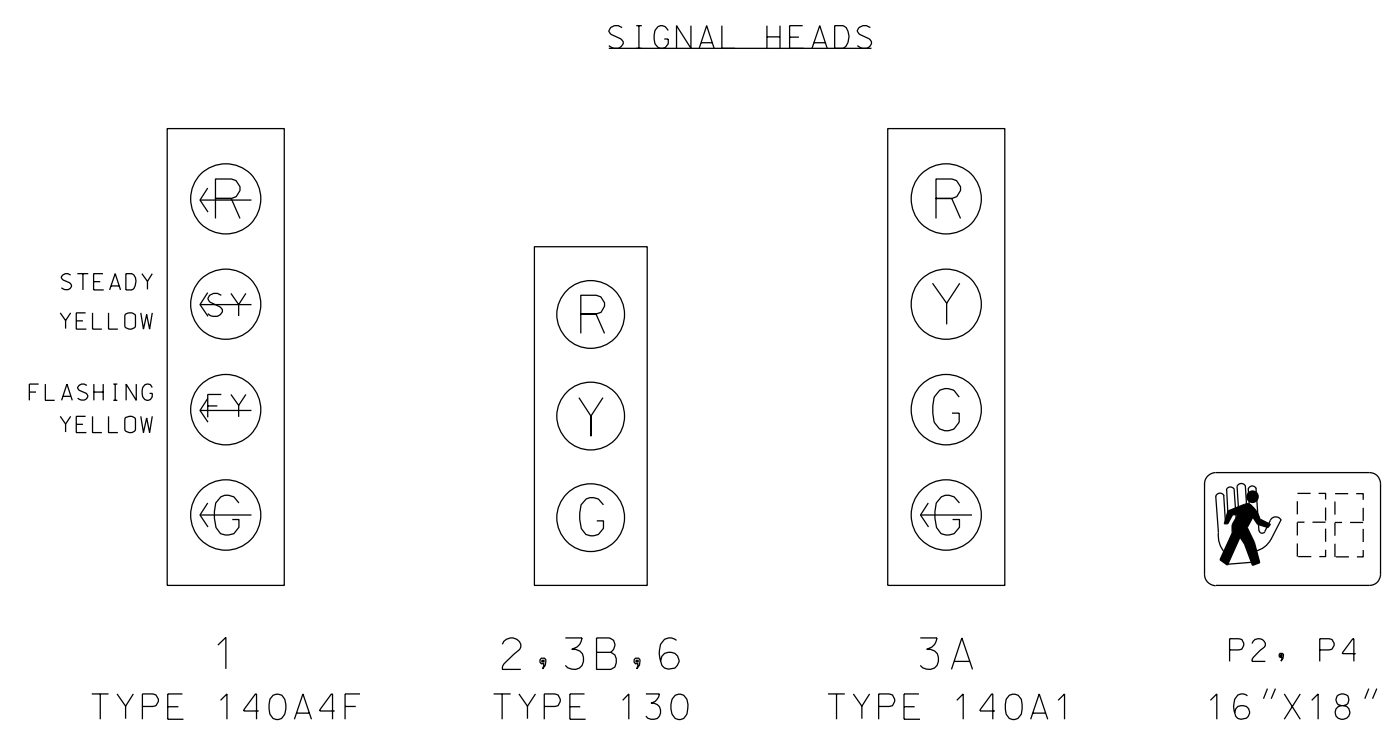
CONCEPT PLAN

Summit Hill Drive Pole Replacement Project - Locust Street Intersection

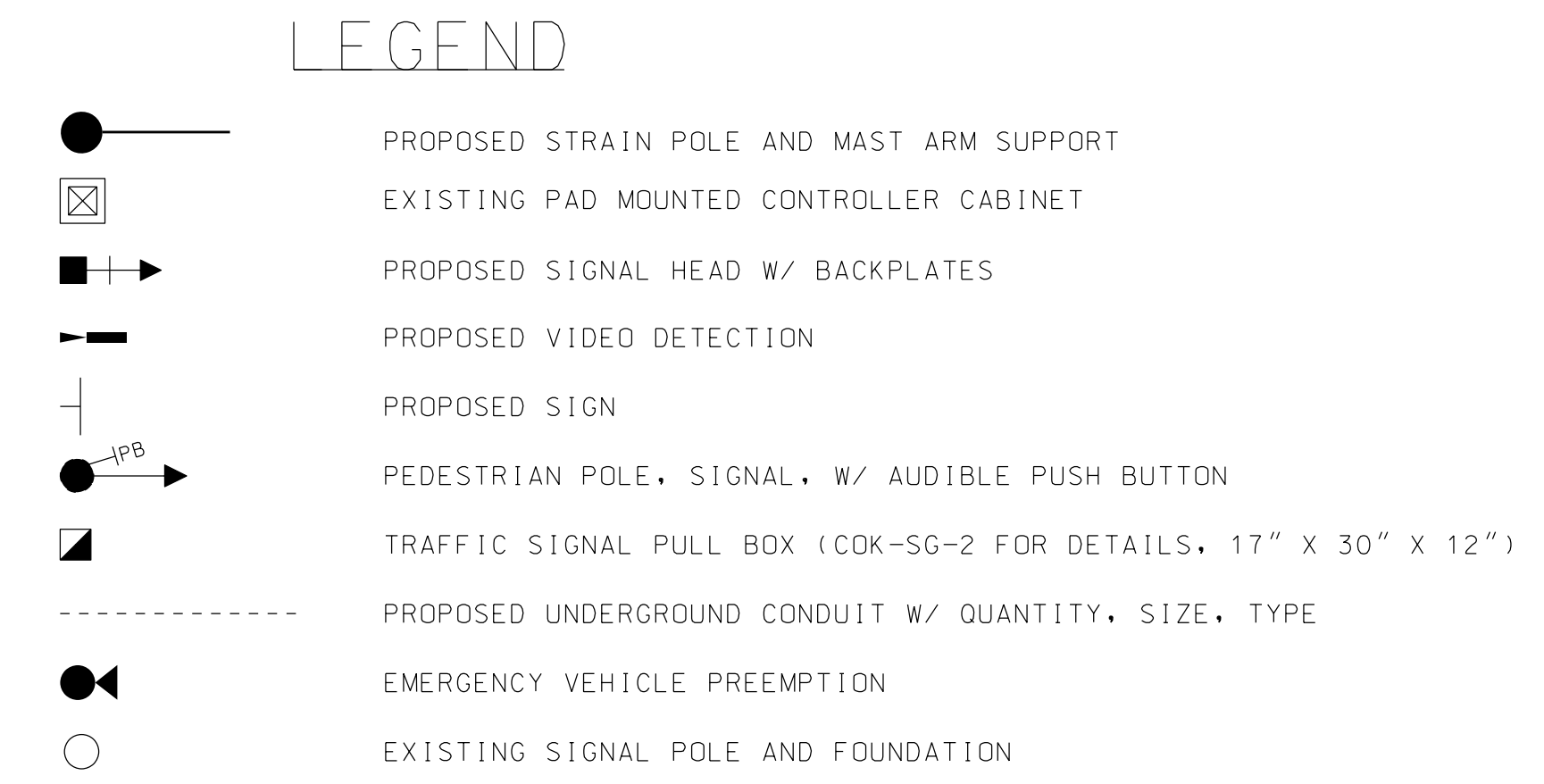
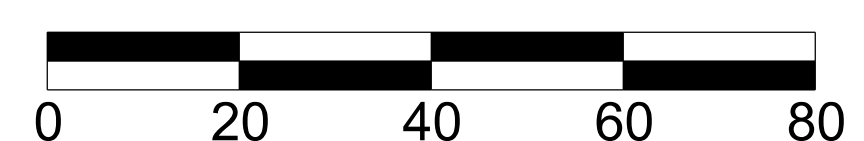
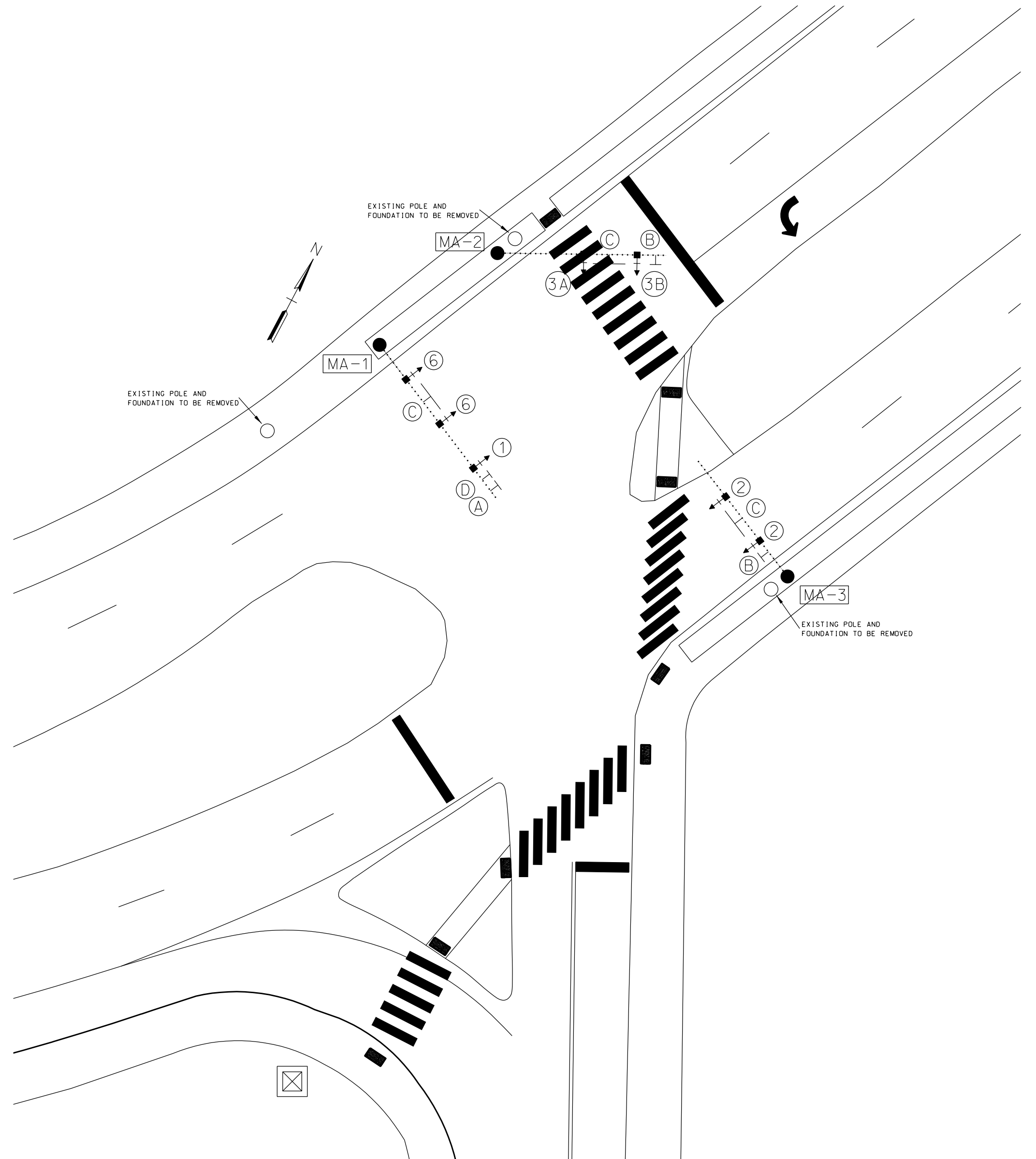
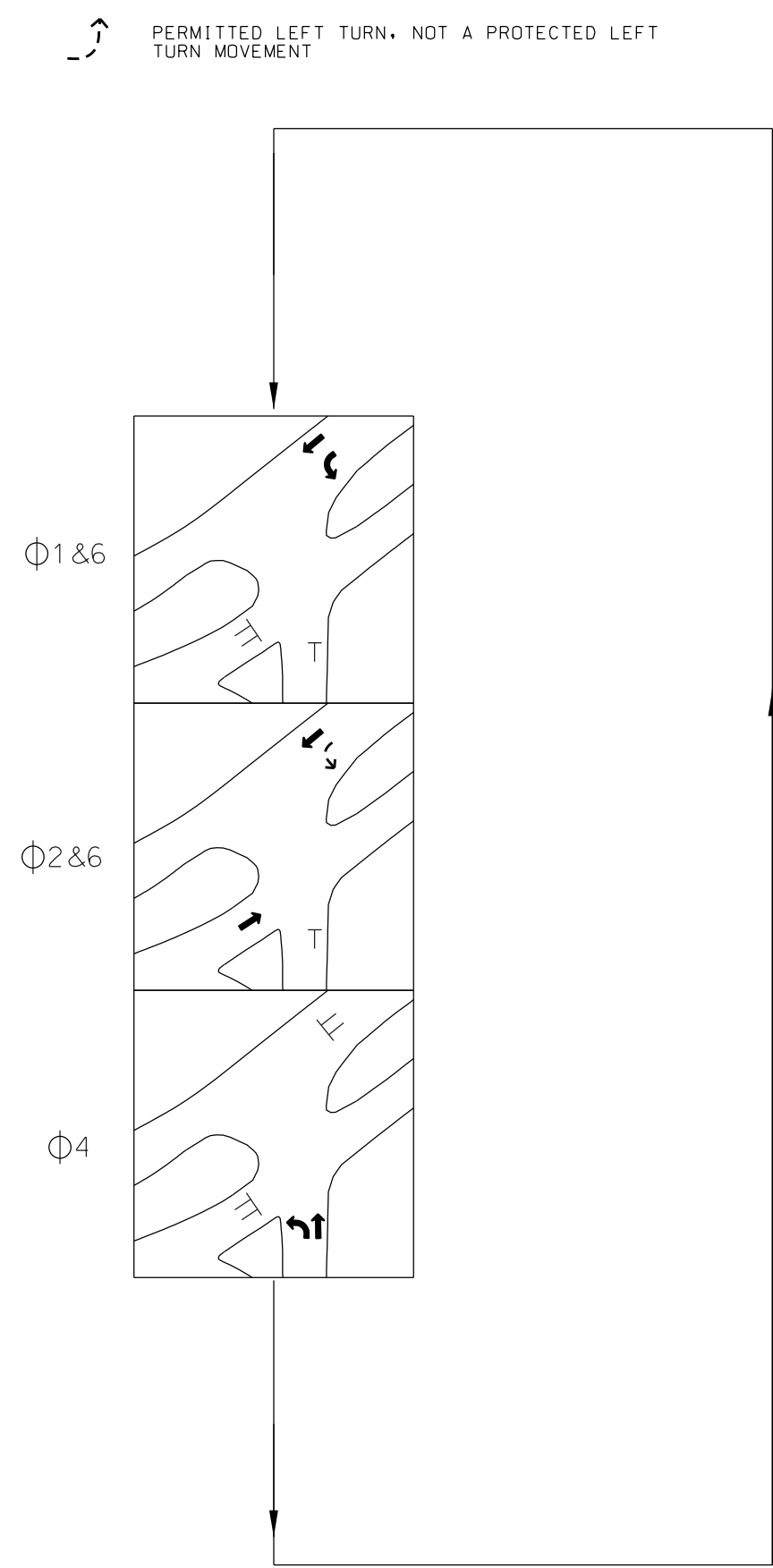
District 6, City Blocks: 06081, 06083, 06084, 06141



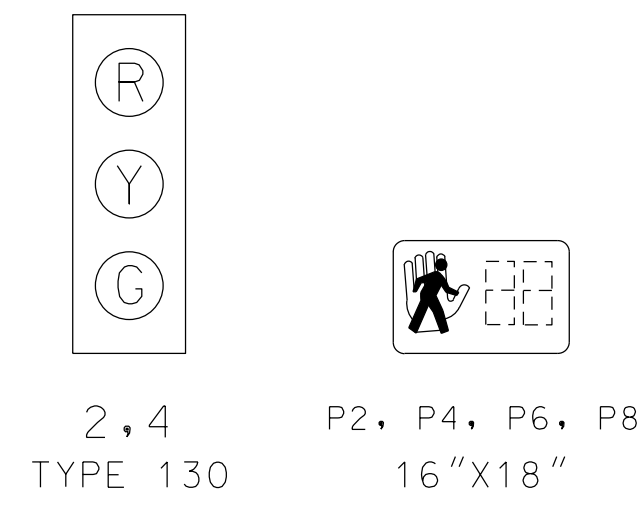
Drawn by:
Designed by:
Approved by:
Scale: 1" = 20'
Date:
SHEET 1



PHASING DIAGRAM  
N. T. S.



SIGNAL HEADS

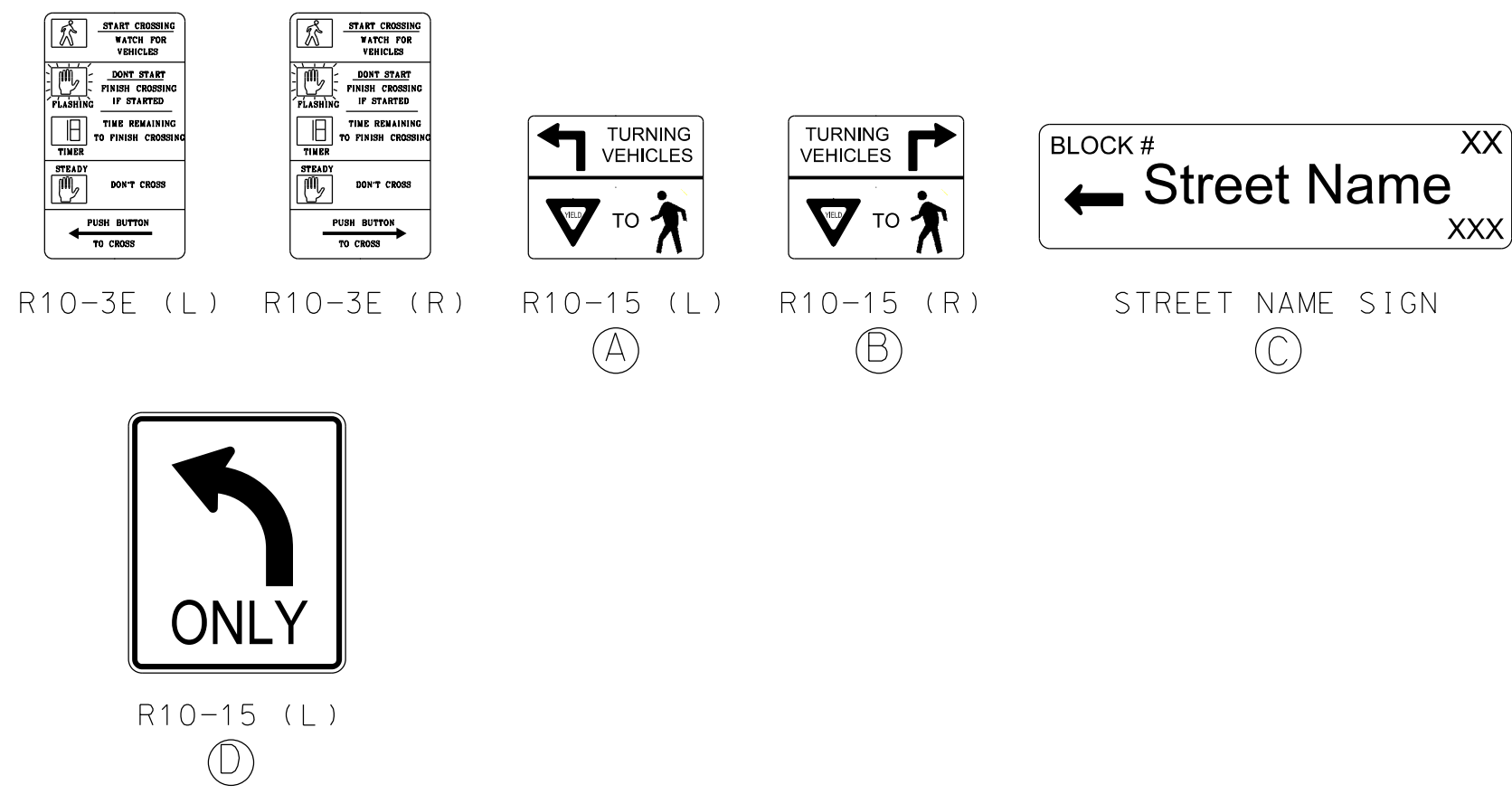


SIGNAL POLE DATA

POLE NO.	ATTACH ELEV.	POLE HEIGHT	ARM LENGTH	FOOTING DEPTH
MA-1	19'	22'	30'	MIN 15'*
MA-2	19'	30'	40', 40'	MIN 15'*

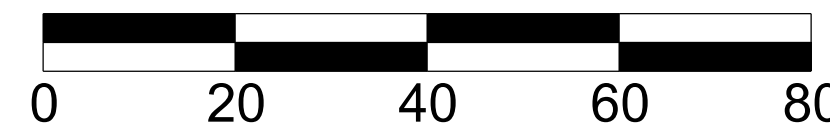
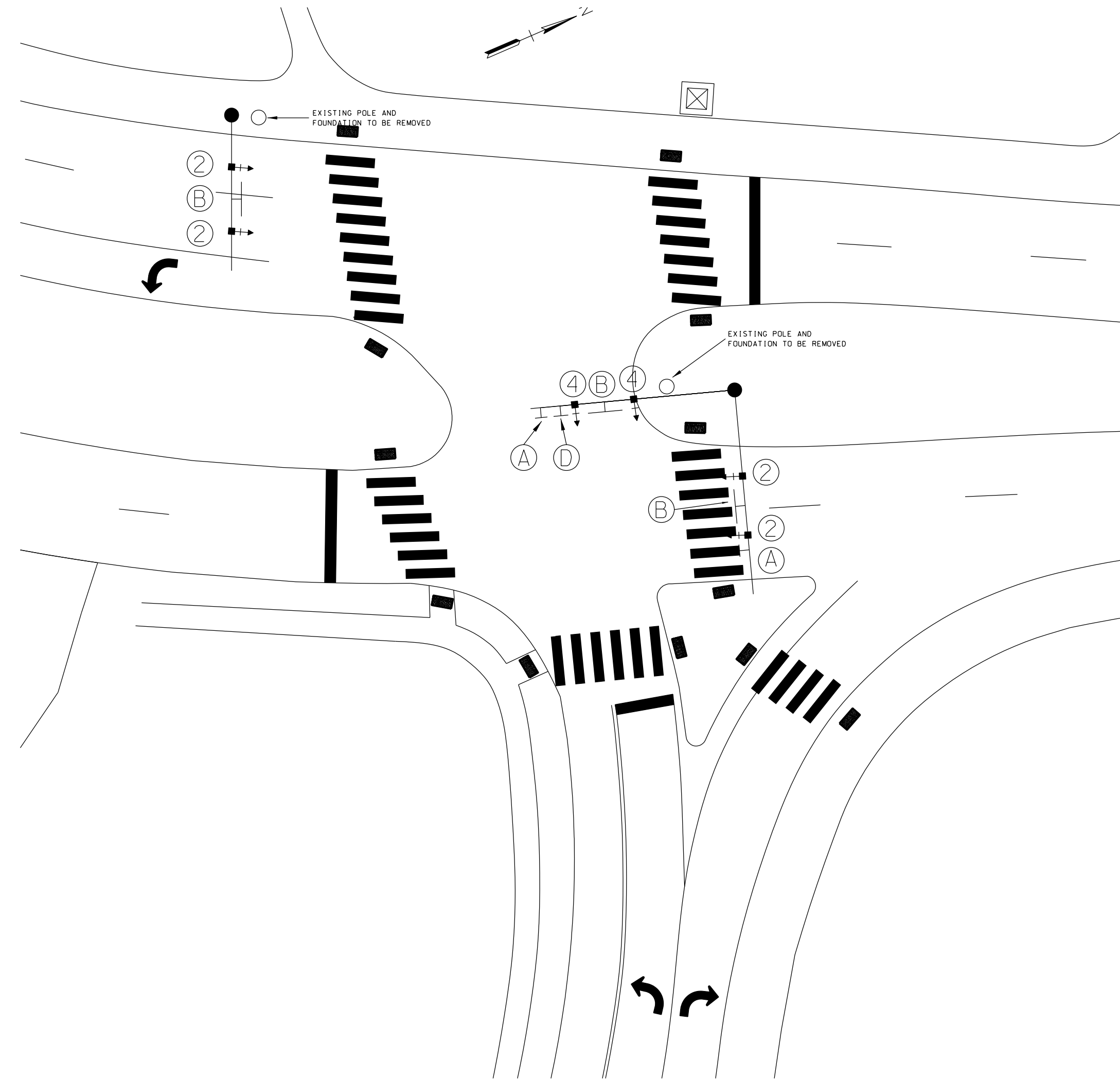
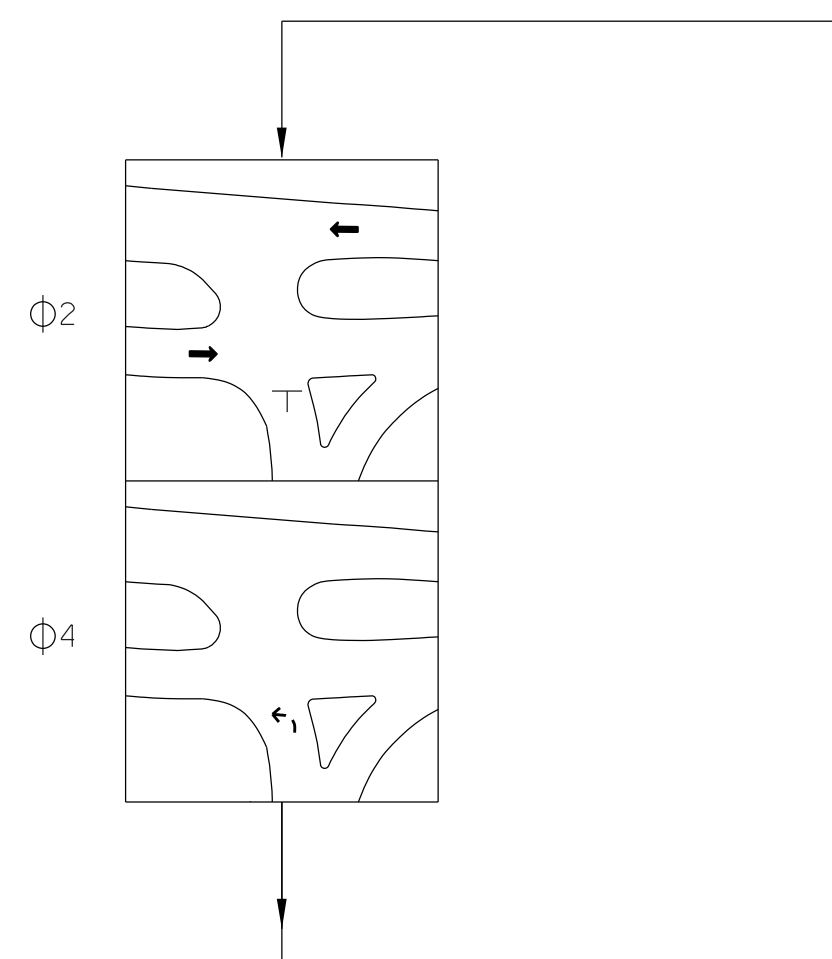
\* FOOTING DEPTHS WILL BE BASED ON POLE MAX BENDING MOMENT FROM DESIGN AND COK FOUNDATION DESIGN REQUIREMENTS (COK-SG-10)

SIGN SCHEDULE



PHASING DIAGRAM  
N. T. S.

PERMITTED LEFT TURN. NOT A PROTECTED LEFT TURN MOVEMENT



LEGEND

- PROPOSED STRAIN POLE AND MAST ARM SUPPORT
- ☒ EXISTING PAD MOUNTED CONTROLLER CABINET
- ➔ PROPOSED SIGNAL HEAD W/ BACKPLATES
- PROPOSED VIDEO DETECTION
- ⊥ PROPOSED SIGN
- ➔➔ PEDESTRIAN POLE, SIGNAL, W/ AUDIBLE PUSH BUTTON
- ☑ TRAFFIC SIGNAL PULL BOX (COK-SG-2 FOR DETAILS, 17" X 30" X 12")
- PROPOSED UNDERGROUND CONDUIT W/ QUANTITY, SIZE, TYPE
- ⚡ EMERGENCY VEHICLE PREEMPTION
- EXISTING SIGNAL POLE AND FOUNDATION

REVISIONS	
NO.	DATE

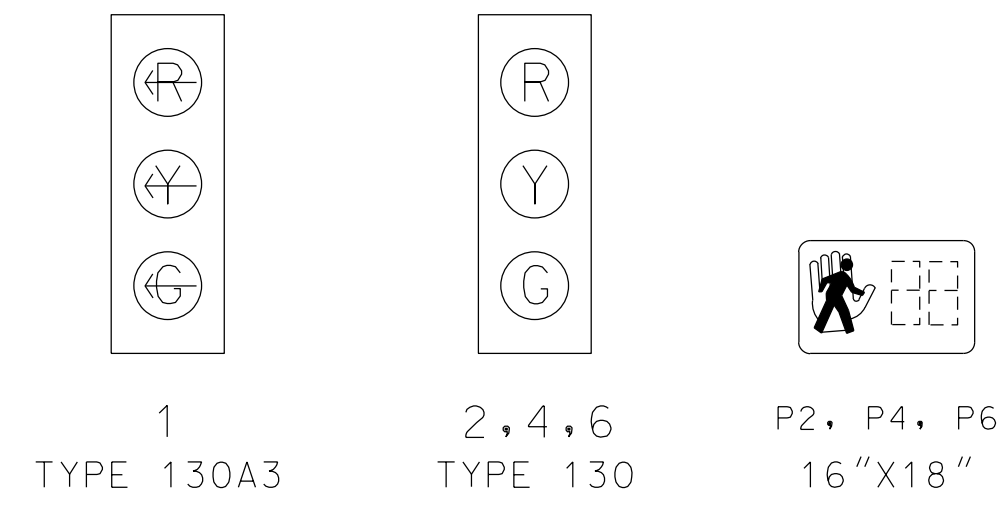
CONCEPT PLAN

Summit Hill Drive Pole Replacement Project - State Street Intersection  
District 6, City Blocks: 05022, 05023, 08201



Drawn by: \_\_\_\_\_  
 Designed by: \_\_\_\_\_  
 Approved by: \_\_\_\_\_  
 Scale: \_\_\_\_\_  
 Date: \_\_\_\_\_  
 SHEET 4

SIGNAL HEADS



SIGNAL POLE DATA

POLE NO.	ATTACH ELEV.	POLE HEIGHT	ARM LENGTH	FOOTING DEPTH
MA-1	19'	22'	35'	MIN 15'*
MA-2	19'	22'	65', 35'	MIN 15'*

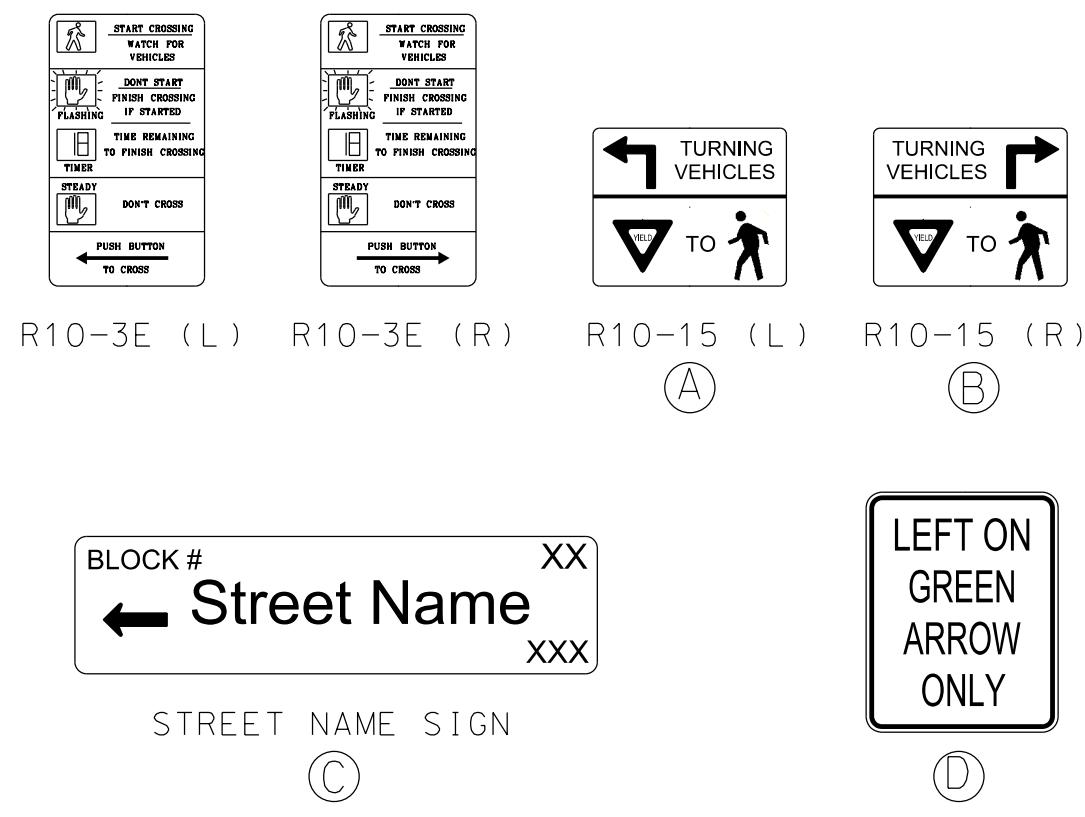
\* FOOTING DEPTHS WILL BE BASED ON POLE MAX BENDING MOMENT FROM DESIGN AND COK FOUNDATION DESIGN REQUIREMENTS (COK-SG-10)

REVISIONS	
NO.	DATE

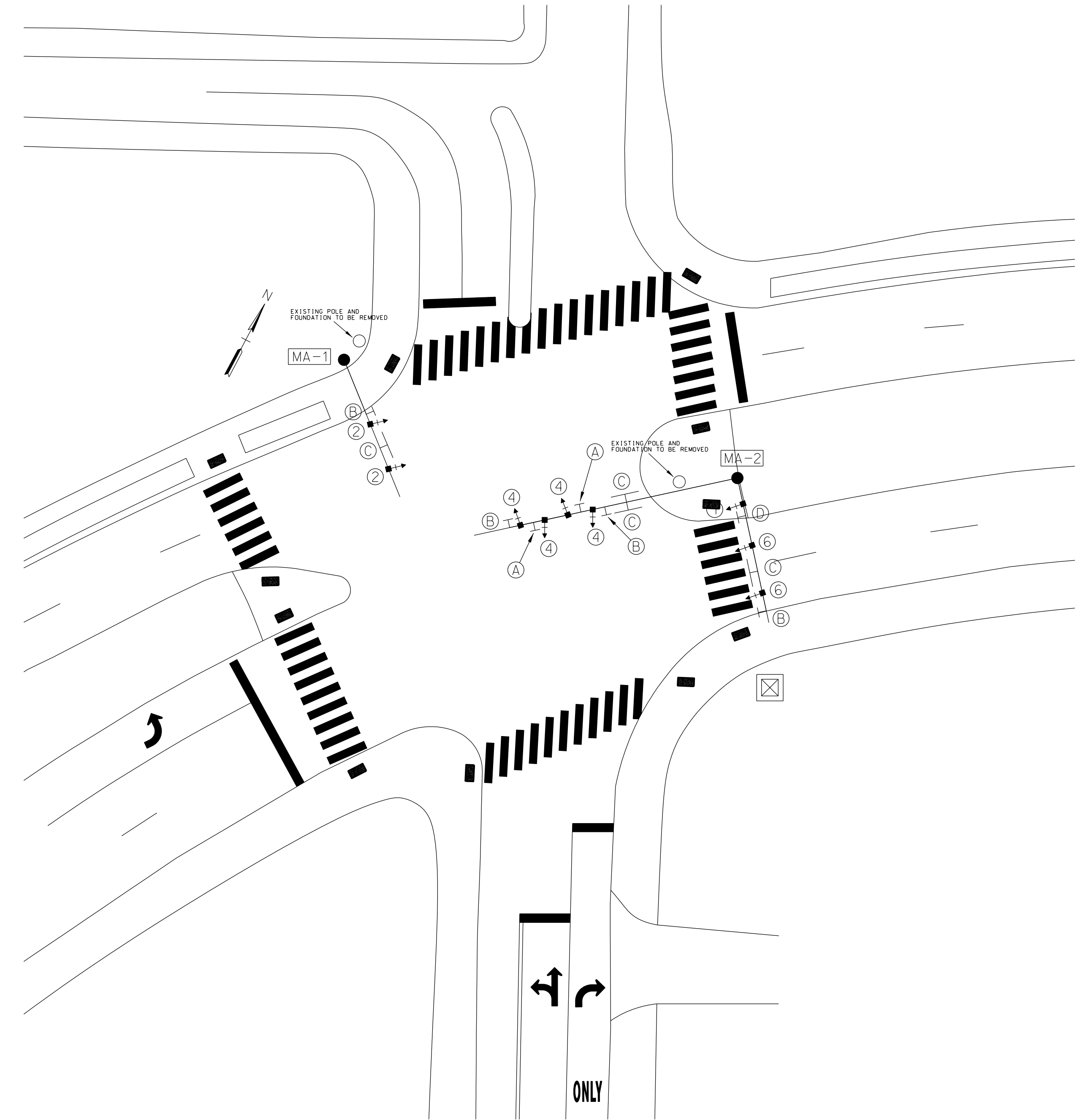
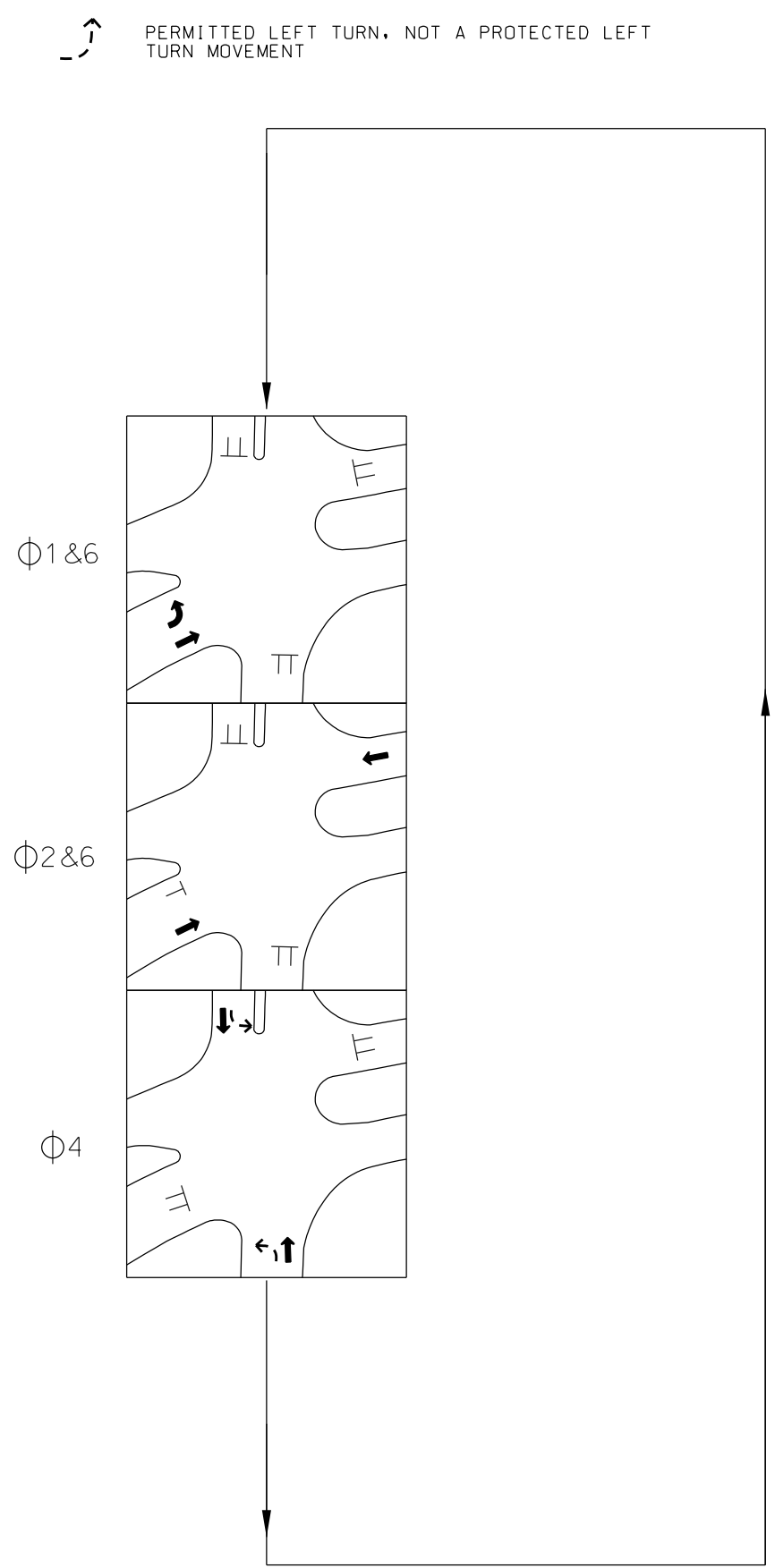
CONCEPT PLAN

Summit Hill Drive Pole Replacement Project - Walnut Street Intersection  
 District 6, City Blocks: 06083, 06084, 06101, 06103

SIGN SCHEDULE

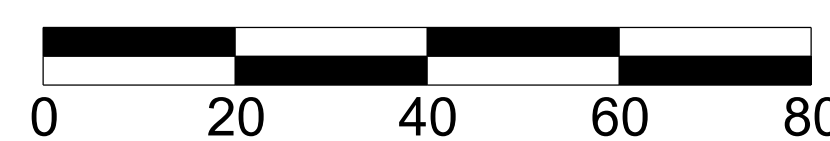


PHASING DIAGRAM N.T.S.

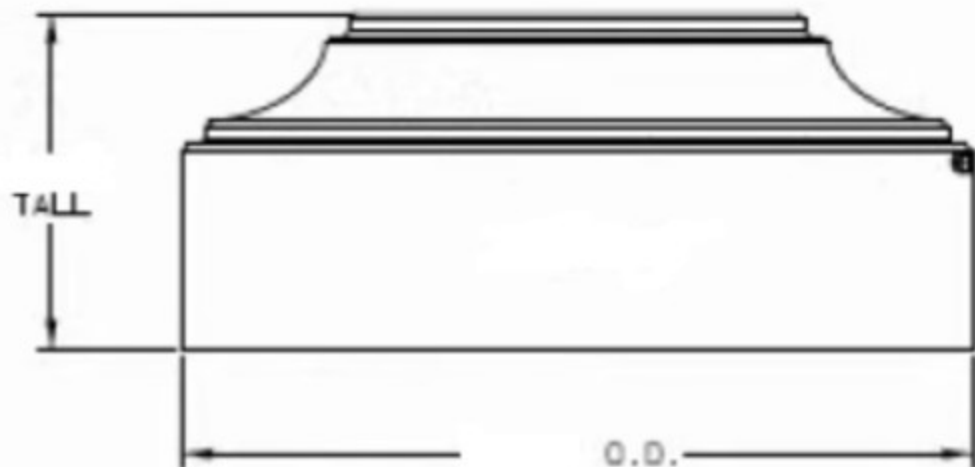


LEGEND

- PROPOSED STRAIN POLE AND MAST ARM SUPPORT
- EXISTING PAD MOUNTED CONTROLLER CABINET
- PROPOSED SIGNAL HEAD W/ BACKPLATES
- PROPOSED VIDEO DETECTION
- PROPOSED SIGN
- PEDESTRIAN POLE, SIGNAL, W/ AUDIBLE PUSH BUTTON
- TRAFFIC SIGNAL PULL BOX (COK-SG-2 FOR DETAILS, 17" X 30" X 12")
- PROPOSED UNDERGROUND CONDUIT W/ QUANTITY, SIZE, TYPE
- EMERGENCY VEHICLE PREEMPTION
- EXISTING SIGNAL POLE AND FOUNDATION



Drawn by:  
 Designed by:  
 Approved by:  
 Scale: 1" = 20'  
 Date:  
 SHEET 2



DETAIL

DECORATIVE BASE





**END OF ADDENDUM NO. I**