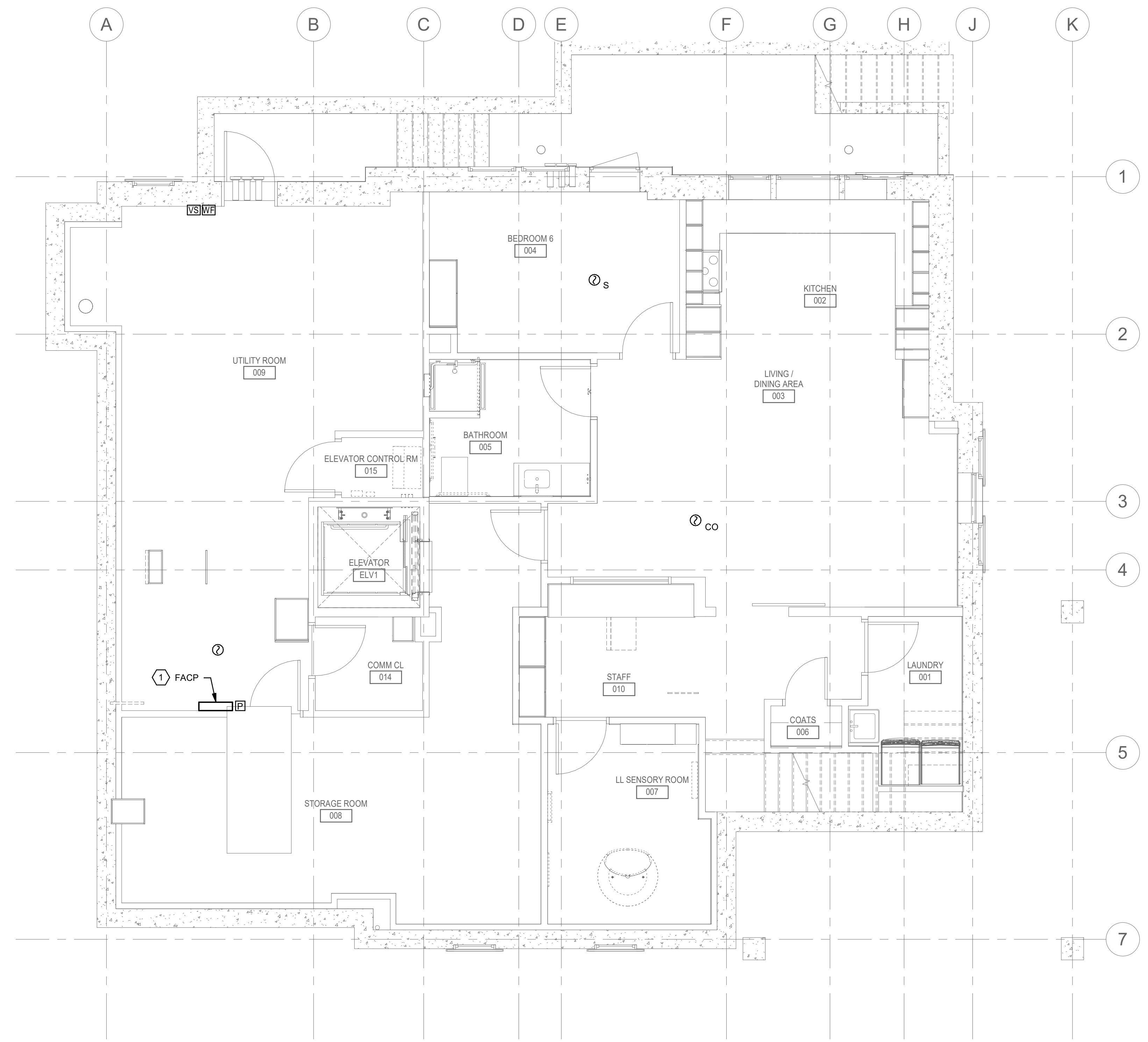




2 GROUND LEVEL FIRE ALARM PLAN - OVERALL

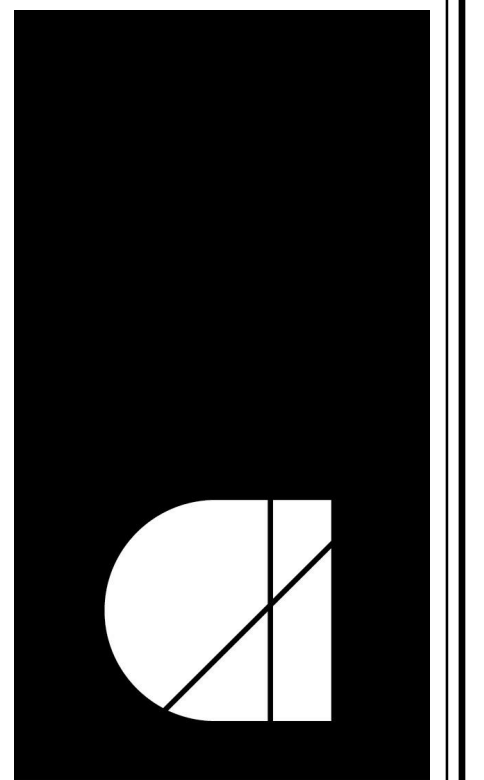


1 BASEMENT LEVEL FIRE ALARM PLAN - OVERALL

SHEET KEYNOTES

1. PROVIDE A DEDICATED FUNCTIONS PANEL TO MONITOR THE FIRE SPRINKLER SYSTEM FLOW AND TAMPER SWITCHES.

INTERFACE ENGINEERING
 PROJECT: Arlington County Group Home
 CONTACT: Kyle Rives
 2000 M Street NW, Suite 270
 Washington, DC 20036
 TEL: 202-370-9555
 www.interfaceengineering.com



architecture incorporated
 1902 campus commons drive
 suite 101
 reston, virginia 20191
 Tel: 703.476.3900
 www.archinc.com

Construction Documents for:
ARLINGTON COUNTY DHS GROUP HOME
 1212 S. IRVING ST.
 ARLINGTON, VA 22204

Project: 19296-01

Issued 10/21/2020

100% BID

Revisions

FLOOR PLANS - BASEMENT & GROUND LEVEL - FIRE ALARM

Scale 1/4" = 1'-0"
 Drawn JBM
 Checked JJ

FA101

100% BID