
ADDENDUM NUMBER ONE
TO THE CONTRACT DOCUMENTS FOR CONSTRUCTION OF
ORANGE BEACH RECREATION COMPLEX NEW ADULT FITNESS CENTER
CITY OF ORANGE BEACH

This addendum forms a part of the Contract Documents and modifies the Bid Documents dated February 14, 2020.

This Addendum consists of two (2) page Addendum, one (1) Specification, & four (4) full-size sheets.

SPECIFICATIONS

ITEM 01 SECTION 087100-DOOR HARDWARE

Reissue Specification in its entirety.

1. Revised certain door hardware sets that were updated to match door schedule comment 1 on sheet A260 and include proper closure with hold open.
2. Door hardware sets 12 and 13 were updated to include manual hold open hardware.

DRAWINGS

ITEM 01 SHEET A260 – DOOR SCHEDULE AND ELEVATIONS

Reissue Sheet in its entirety.

1. Removed comments:
 - a. Door 00A-1 – comments 1 and 9.
 - b. Door 02A-1 – comments 2 and 13.
 - c. Door 04A-1 – comment 9.
 - d. Door 05A-1 – comment 9.
 - e. Door V000-2 – comment 14.
2. Added Comments:
 - a. Door 00A-1 – comments 2, 14 and 15.
 - b. Door 01B-1 – comments 6 and 17.
 - c. Door 02A-1 - comments 1 and 14.
 - d. Door 02B-1 – comments 6 and 17.
 - e. Door 05A-1 – comment 14.
 - f. Door 06-1 - comment 14.
 - g. Door 08-1 – comment 14.
 - h. Door 09-1 – comment 14.
3. Changed Door Types:
 - a. Door 08-1 from BD-13 to WD-1.
 - b. Door 09-1 from BD-14 to HMS-1.
4. Added note 8 to Door Schedule – Notes.



ITEM 02 SHEET A400 – ENLARGED RESTROOM PLANS & ELEVATIONS

Reissue Sheet in its entirety.

1. Revised porcelain wall tile hatch, PWT-1 & PWT-2.

ITEM 03 SHEET A901 – LEVEL 1-FINISH PLAN

Reissue Sheet in its entirety.

1. Revised restroom and locker room finish tags, added plan finish tags.

ITEM 04 SHEET A910 – FINISH LEGEND

Reissue Sheet in its entirety.

1. Revised finish information for CPTT-1.
2. Revised finish information for PWT-2.

END OF ADDENDUM

SECTION 08 71 00

DOOR HARDWARE

PART 1 - GENERAL

1.1 SUMMARY:

- A. Section Includes: Finish Hardware for door openings, except as otherwise specified herein.
1. Door hardware for steel (hollow metal) doors.
 2. Door hardware for aluminum doors.
 3. Door hardware for wood doors.
 4. Door hardware for other doors indicated.
 5. Keyed cylinders as indicated.
- B. Related Sections:
1. Division 06: Rough Carpentry.
 2. Division 08: Aluminum Doors and Frames
 3. Division 08: Hollow Metal Doors and Frames.
 4. Division 08: Wood Doors.
 5. Division 26: Electrical
 6. Division 28: Electronic Security
- C. References: Comply with applicable requirements of the following standards. Where these standards conflict with other specific requirements, the most restrictive shall govern.
1. Builders Hardware Manufacturing Association (BHMA)
 2. NFPA 101 Life Safety Code, 2010
 3. NFPA 80 – Standard for Fire Doors and Other Opening Protectives, 2013
 4. ANSI-A156.xx- Various Performance Standards for Finish Hardware
 5. UL10C – Positive Pressure Fire Test of Door Assemblies
 6. ANSI-A117.1 – Accessible and Usable Buildings and Facilities
 7. DHI /ANSI A115.IG – Installation Guide for Doors and Hardware
 8. IBC – International Building Code, 2015
- D. Intent of Hardware Groups
1. Should items of hardware not definitely specified be required for completion of the Work, furnish such items of type and quality comparable to adjacent hardware and appropriate for service required.
 2. Where items of hardware are not definitely or correctly specified, but are required for completion of the Work, a written statement of such omission, error or other discrepancy must be submitted to Architect prior to date specified for receipt of bids for clarification by addendum.
- E. Allowances
1. Refer to Division 01 for allowance amount and procedures.
- F. Alternates
1. Refer to Division 01 for Alternates and procedures.

1.2 SUBSTITUTIONS:

A. Comply with Division 01.

1.3 SUBMITTALS:

A. Comply with Division 01.

B. Special Submittal Requirements: Combine submittals of this Section with Sections listed below to ensure the "design intent" of the system/assembly is understood and can be reviewed together.

C. Product Data: Manufacturer's specifications and technical data including the following:

1. Detailed specification of construction and fabrication.
2. Manufacturer's installation instructions.
3. Wiring diagrams for each electric product specified. Coordinate voltage with electrical before submitting.
4. Submit 6 copies of catalog cuts with hardware schedule.

D. Shop Drawings - Hardware Schedule: Submit 6 complete reproducible copy of detailed hardware schedule in a vertical format.

1. List groups and suffixes in proper sequence.
2. Completely describe door and list architectural door number.
3. Manufacturer, product name, and catalog number.
4. Function, type, and style.
5. Size and finish of each item.
6. Explanation of abbreviations and symbols used within schedule.

E. Templates: Submit templates and "reviewed Hardware Schedule" to door and frame supplier and others as applicable to enable proper and accurate sizing and locations of cutouts and reinforcing.

F. Samples: (If requested by the Architect)

1. 1 sample of Lever and Rose/Escutcheon design, (pair).
2. 3 samples of metal finishes

G. Contract Closeout Submittals: Comply with Division 01 including specific requirements indicated.

1. Operating and maintenance manuals: Submit 3 sets containing the following.
 - a. Complete information in care, maintenance, and adjustment, and data on repair and replacement parts, and information on preservation of finishes.
 - b. Catalog pages for each product.
 - c. Name, address, and phone number of local representatives for each manufacturer.
 - d. Manufacture's installation instructions for each product.
2. Copy of final hardware schedule, edited to reflect, "As installed".
3. Copy of final keying schedule
4. One set of special tools required for maintenance and adjustment of hardware, including changing of cylinders.

1.4 QUALITY ASSURANCE

A. Comply with Division 01.

1. Statement of qualification for distributor and installers.
2. Statement of compliance with regulatory requirements and single source responsibility.
3. Distributor's Qualifications: Firm with 3 consecutive years of experience in the distribution of commercial hardware.
 - a. Distributor to employ full time Architectural Hardware Consultants (AHC) for the purpose of scheduling and coordinating hardware and establishing keying schedule.
 - b. Hardware Schedule shall be prepared and signed by an AHC.
 - c. Distributor must be an authorized factory distributor for products furnished.
4. Installer's Qualifications: Firm with 3 years experienced in installation of similar hardware to that required for this Project, including specific requirements indicated.
5. Regulatory Label Requirements: Provide testing agency label or stamp on hardware for labeled openings.
 - a. Provide UL listed hardware for labeled and 20-minute openings in conformance with requirements for class of opening scheduled.
 - b. Underwriters Laboratories requirements have precedence over this specification where conflict exists.
6. Single Source Responsibility: Except where specified in hardware schedule, furnish products of only one manufacturer for each type of hardware.

- B. Review Project for extent of finish hardware required to complete the Work. Where there is a conflict between these Specifications and the existing hardware, notify the Architect in writing and furnish hardware in compliance with the Specification unless otherwise directed in writing by the Architect.

1.5 DELIVERY, STORAGE, AND HANDLING

A. Packing and Shipping: Comply with Division 01.

1. Deliver products in original unopened packaging with legible manufacturer's identification.
2. Package hardware to prevent damage during transit and storage.
3. Mark hardware to correspond with "reviewed hardware schedule".
4. Deliver hardware to door and frame manufacturer upon request.

- B. Storage and Protection: Comply with manufacturer's recommendations.

1.6 PROJECT CONDITIONS:

- A. Coordinate hardware with other work. Furnish hardware items of proper design for use on doors and frames of the thickness, profile, swing, security and similar requirements indicated, as necessary for the proper installation and function, regardless of omissions or conflicts in the information on the Contract Documents.
- B. Review Shop Drawings for doors and entrances to confirm that adequate provisions will be made for the proper installation of hardware.

1.7 WARRANTY:

- A. Refer to Conditions of the Contract
- B. Manufacturer's Warranty:

1. Closers: Ten years
2. Exit Devices: Five Years
3. Locksets & Cylinders: Seven Years
4. All other Hardware: Two Years.

1.8 OWNER'S INSTRUCTION:

- A. Instruct Owner's personnel in operation and maintenance of hardware units.

1.9 MAINTENANCE:

- A. Deliver to Owner:

1. Special Tools: Provide special wrenches and tools applicable to each different or special hardware component.

PART 2 - PRODUCTS

2.1 MANUFACTURERS:

- A. The following manufacturers are approved subject to compliance with requirements of the Contract Documents. Approval of manufacturers other than those listed shall be in accordance with Division 01.

<u>Item:</u>	<u>Manufacturer:</u>	<u>Approved:</u>
Hinges	Stanley	Ives, McKinney
Continuous Hinges	Stanley	Ives, Pemko
Locksets	Best 45H	Sargent 8200, Schlage L9000
Cylinders / Cores	Best (CORMAX)	
Exit Devices	Precision Apex 2000	Von Duprin 98, Sargent 80
Flush Bolts	ABH	Ives, Rockwood
Closers	Stanley D-4550/4551	LCN 4050, Sargent 351
Push/Pull Plates	Trimco	Ives, Rockwood
Protection Plates	Trimco	Ives, Rockwood
Door Stops	Trimco	Ives, Rockwood
Threshold & Gasketing	National Guard	Pemko, Zero

2.2 MATERIALS:

- A. Hinges: Shall be Five Knuckle Ball bearing hinges

1. Template screw hole locations
2. Bearings are to be fully hardened.
3. Bearing shell is to be consistent shape with barrel.
4. Minimum of 2 permanently lubricated non-detachable bearings on standard weight hinge and 4 permanently lubricated bearing on heavy weight hinges.
5. Equip with easily seated, non-rising pins.
6. Non-Removable Pin screws shall be slotted stainless steel screws.
7. Hinges shall be full polished, front, back and barrel.
8. Hinge pin is to be fully plated.
9. Bearing assembly is to be installed after plating.
10. Sufficient size to allow 180-degree swing of door
11. Furnish five knuckles with flush ball bearings
12. Provide hinge type as listed in schedule.

13. Furnish 3 hinges per leaf to 7-foot, 6-inch height. Add one for each additional 30 inches in height or fraction thereof.
14. Tested and approved by BHMA for all applicable ANSI Standards for type, size, function and finish
15. UL10C listed for Fire rated doors.

B. Geared Continuous Hinges:

1. Tested and approved by BHMA for ANSI A156.26-1996 Grade 1
2. Anti-spinning through fastener
3. UL10C listed for 3-hour Fire rating
4. Non-handed
5. Lifetime warranty
6. Provide Fire Pins for 3-hour fire ratings
7. Permit door to swing 180 degrees

C. Mortise Type Locks and Latches:

1. Tested and approved by BHMA for ANSI A156.13, Series 1000, Operational Grade 1, Extra-Heavy Duty, Security Grade 2 and be UL10C.
2. Fit ANSI A115.1 door preparation
3. Functions and design as indicated in the hardware groups
4. Solid, one-piece, 3/4-inch (19mm) throw, anti-friction latch bolt made of self-lubricating stainless steel
5. Deadbolt functions shall have 1 inch (25mm) throw bolt made of hardened stainless steel
6. Latch bolt and Deadbolt are to extend into the case a minimum of 3/8 inch (9.5mm) when fully extended
7. Auxiliary dead latch to be made of one-piece stainless steel, permanently lubricated
8. Provide sufficient curved strike lip to protect door trim
9. Lever handles must be of forged or cast brass, bronze or stainless-steel construction and conform to ANSI A117.1. Levers that contain a hollow cavity are not acceptable
10. Lock shall have self-aligning, thru-bolted trim
11. Levers to operate a roller bearing spindle hub mechanism
12. Mortise cylinders of lock shall have a concealed internal setscrew for securing the cylinder to the lockset. The internal setscrew will be accessible only by removing the core, with the control key, from the cylinder body.
13. Spindle to be designed to prevent forced entry from attacking of lever
14. Provide locksets with 7-pin removable and interchangeable core cylinders
15. Each lever to have independent spring mechanism controlling it
16. Core face must be the same finish as the lockset.

D. Tubular Deadbolts:

1. ANSI / BHMA Grade 1
2. 1" Throw Stainless Steel deadbolt
3. Solid extruded brass or bronze cylinder

E. Exit Devices:

1. Exit devices to meet or exceed BHMA for ANSI 156.3, Grade 1.
2. Exit devices chassis to be investment cast steel, zinc dichromate.
3. Exit devices to have stainless steel deadlocking 3/4" through latch bolt.
4. Exit devices to be equipped with sound dampening on touch bar.
5. Non-fire rated exit devices to have cylinder dogging.
6. Non-fire rated exit devices to have 1/4" minimum turn hex key dogging.
7. Touchpad to be "T" style constructed of architectural metal with matching metal end caps.
8. Touch bar assembly on wide style exit devices to have a 1/4" clearance to allow for vision frames.
9. All exposed exit device components to be of architectural metals and "true" architectural finishes.
10. Provide strikes as required by application.

11. Fire exit hardware to conform to UL10C and UBC 7-2. UL tested for Accident Hazard.
12. The strike is to be black powder coated finish.
13. Exit devices to have field reversible handing.
14. Provide heavy duty vandal resistant lever trim with heavy duty investment cast stainless steel components and extra strength shock absorbing overload springs. Lever shall not require resetting. Lever design to match locksets and latch sets.
15. Vertical Latch Assemblies to have gravity operation, no springs.

F. Door Closers shall:

1. Tested and approved by BHMA for ANSI 156.4, Grade 1
2. UL10C certified
3. Conform to ANSI 117.1
4. Maximum 2-7/16 inch case projection with non-ferrous cover
5. Separate adjusting valves for closing and latching speed, and backcheck
6. Provide adapter plates, shim spacers and blade stop spacers as required by frame and door conditions
7. Full rack and pinion type closer with 1-1/2" minimum bore
8. Mount closers on non-public side of door, unless otherwise noted in specification
9. Closers shall be non-handed, non-sized and multi-sized.

G. Push Plates: Provide with four beveled edges ANSI J301, .050 thickness, size as indicated in hardware set. Furnish oval-head countersunk screws to match finish.

H. Pulls with plates: Provide with four beveled edges ANSI J301, .050 thickness Plates with ANSI J401 Pull as listed in hardware set. Provide proper fasteners for door construction.

I. Kickplates: Provide with four beveled edges ANSI J102, 10 inches high by width less 2 inches on single doors and 1 inch on pairs of doors. Furnish oval-head countersunk screws to match finish.

J. Mop plates: Provide with four beveled edges ANSI J103, 6 inches high by width less 1 inch on single doors and 1 inch on pairs of doors. Furnish oval-head countersunk screws to match finish.

K. Weather stripping: Provide at head and jambs only those units where resilient or flexible seal strip is easily replaceable. Where bar-type weather strip is used with parallel arm mounted closers install weather-strip first.

1. Weather strip shall be resilient seal of (Neoprene, Polyurethane, Vinyl, Pile, Nylon Brush, Silicone)
2. UL10C Positive Pressure rated seal set when required.

L. Door Bottoms/Sweeps: Surface mounted or concealed door bottom where listed in the hardware sets.

1. Door seal shall be resilient seal of (Neoprene, Polyurethane, Nylon Brush, Silicone)
2. UL10C Positive Pressure rated seal set when required.

M. Thresholds: Thresholds shall be aluminum beveled type with maximum height of 1/2" for conformance with ADA requirements. Furnish as specified and per details. Provide fasteners and screws suitable for floor conditions.

N. Silencers: Furnish silencers on all interior frames; 3 for single doors, 2 for pairs.

PART 3 - EXECUTION

3.1 EXAMINATION

- A. Verification of conditions: Examine doors, frames, related items and conditions under which Work is to be performed and identify conditions detrimental to proper and or timely completion.
 - 1. Do not proceed until unsatisfactory conditions have been corrected.

3.2 HARDWARE LOCATIONS:

- A. Mount hardware units at heights indicated in the following publications except as specifically indicated or required to comply with the governing regulations.
 - 1. Recommended Locations for Builder's Hardware for Standard Steel Doors and Frames, by the Door and Hardware Institute (DHI).
 - 2. Recommended locations for Architectural Hardware for flush wood doors (DHI).
 - 3. WDMA Industry Standard I.S.-1A-04, Industry Standard for Architectural wood flush doors.

3.3 INSTALLATION:

- A. Install each hardware item per manufacturer's instructions and recommendations. Do not install surface mounted items until finishes have been completed on the substrate. Set units level, plumb and true to line and location. Adjust and reinforce the attachment substrate as necessary for proper installation and operation.
- B. Conform to local governing agency security ordinance.
- C. Install conforming to ICC/ANSI A117.1 Accessible and Usable Building and Facilities.
 - 1. Adjust door closer sweep periods so that from the open position of 70 degrees, the door will take at least 3 seconds to move to a point 3 inches from the latch, measured to the landing side of the door.
- D. Installed hardware using the manufacturers fasteners provided. Drill and tap all screw holes located in metallic materials. Do not use "Riv-Nuts" or similar products.

3.4 FIELD QUALITY CONTROL AND FINAL ADJUSTMENT

- A. Contractor/Installers, Field Services: After installation is complete, contractor shall inspect the completed door openings on site to verify installation of hardware is complete and properly adjusted, in accordance with both the Contract Documents and final shop drawings.
 - 1. Check and adjust closers to ensure proper operation.
 - 2. Check latch set, lockset, and exit devices are properly installed and adjusted to ensure proper operation.
 - a. Verify levers are free from binding.
 - b. Ensure latch bolts and dead bolts are engaged into strike and hardware is functioning.
 - 3. Report findings, in writing, to architect indicating that all hardware is installed and functioning properly. Include recommendations outlining corrective actions for improperly functioning hardware if required.

SCHEDULE OF FINISH HARDWARE:

DOOR HARDWARE

Manufacturer List

<u>Code</u>	<u>Name</u>
AB	ABH Manufacturing Inc.
BE	Best Access Systems
BY	By Others
NA	National Guard Products
PR	Precision
SD	Stanley Door Closers
ST	Stanley
TR	Trimco

Option List

<u>Code</u>	<u>Description</u>
HC	Hurricane Code Device
LD	Less Dogging
SN	Sex Nuts (Pkg. of 4)
ALK	ALARM, BATTERY OPERATED
CSK	COUNTER SINKING OF KICK and MOP PLATES
NCA-03	Cylinder Attachment Kit
P45-180D	Drop Plate for Narrow Top Rail
B4E	BEVELED 4 EDGES – KICK / MOP PLATES

Finish List

<u>Code</u>	<u>Description</u>
AL	Aluminum
600	Primed for Painting
626	Satin Chromium Plated
630	Satin Stainless Steel
689	Aluminum Painted
GREY	Grey
626AM	Satin Chrome - Antimicrobial Coating
630AM	Satin Stainless - Antimicrobial Coating
US26D	Chromium Plated, Dull
US32D	Stainless Steel, Dull

Hardware Sets

SET #01 - Aluminum Storefront (Vestibule Pairs)

Doors: V001, V002

2 Rim or Mort. Cyl. as req'd.	1E-74 PATD or 12E-72 PATD	626	BE
2 Door Closer	CLD-4551 CS P45-180D SN	689	SD
1 Card Reader	Provided by Security Contractor		BY
	NOTE: At V00-2 only		
2 Door Position Switch	Provided by Security Contractor		BY
	NOTE: At V00-2 only		
1 Threshold	As Detailed		BY

NOTE: Provide Rim or Mortise Cylinders as required and door closers. Balance of approved hardware provided by Aluminum Door and Frame Supplier. At Door V00-2 (interior vestibule doors), presenting valid credential to wall mounted proximity reader temporarily retracts electrified exit device latch bolt on the active leaf to allow entry. Recessed Door Position Switches monitor door status. Request-to-Exit Switches are internal to the exit devices and, when activated upon egress, signal access control system for authorized exiting. Free egress is always possible through either leaf. Exit devices on exterior pair, V00-1, are mechanical only with active trim and cylinder on active leaf.

SET #02 - Aluminum Storefront (Int./Single)

Doors: 04-1, 05-1

1 Continuous Hinge	661HD UL 80"	AL	ST
1 Exit Device	2408 X 2908D NCA-03	630AM	PR
1 Rim Cylinder	12E-72 PATD	626	BE
1 Door Closer	CLD-4551 CS P45-180D SN HOARM	689	SD
1 Gasketing	5050 B @ head & jambs		NA

SET #03 - Louvered Mech. Closet Door

Doors: 01C-1, 02C-1

6 Hinges	FBB191 4 1/2 X 4 1/2 NRP	US32D	ST
1 Set Flush Bolts	1857P	US32D	AB
1 Dust Proof Strike	1870	US32D	AB
1 Lockset	45H-7D14R PATD	630	BE
2 Mop Plate	KM050 6" X 1" LDW B4E CSK	630	TR
1 Wall Bumper	1270CX	626	TR
1 Meeting Stile Astragal	9600 A (SET) x Door Height		NA
1 Saddle Threshold	425	AL	NA
2 Door Silencers	1229A	GREY	TR

SET #04 - Sauna

Doors: 01B-1, 02B-1

NOTE: Door and hardware provided by Sauna Supplier.

SET #05 - Exterior Pair / Exit Only + Alarm

Doors: 00A-1

6 Hinges	FBB199 4 1/2 X 4 1/2 NRP	US32D	ST
1 Removable Mullion	HCKR822	600	PR

2 Exit Device w/ Alarm	HC 2101 ALK LD	630AM	PR
2 Mortise Cylinder (Alarm)	1E-74 PATD	626	BE
1 Rim Cylinder (Mullion)	12E-72 PATD	626	BE
2 Door Closer	CLD-4550 CS	689	SD
2 Kick Plate	K0050 10" X 2" LDW B4E CSK	630	TR
1 Gasketing	127 NA @ head & jambs		NA
1 Drip Cap	16 A x 4" ODW		NA
2 Door Sweep	C627 A		NA
1 Mullion Seal	5100N-86 86"		NA
1 Bumper Seal Threshold	896 N	AL	NA

NOTE: Alarm kit in exit devices are armed / disarmed by turning key in arming cylinder. When armed, depressing push pad will activate audible alarm which will sound until reset by key. Post related signage as required.

SET #06 - Storage

Doors: 04A-1, 05A-1

6 Hinges	FBB191 4 1/2 X 4 1/2 NRP	US32D	ST
1 Set Flush Bolts	1857P	US32D	AB
1 Dust Proof Strike	1870	US32D	AB
1 Lockset	45H-7D14R PATD	630	BE
2 Door Closer	CLD-4550 HS SN	689	SD
2 Kick Plate	K0050 10" X 1" LDW B4E CSK	630	TR
2 Mop Plate	KM050 6" X 1" LDW B4E CSK	630	TR
2 Door Silencers	1229A	GREY	TR

SET #07 - Janitor

Doors: 08-1

3 Hinges	FBB191 4 1/2 X 4 1/2 NRP	US32D	ST
1 Lockset	45H-7D14R PATD	630	BE
1 Door Closer	CLD-4551 STD W/PA BRKT SN HOARM	689	SD
1 Kick Plate	K0050 10" X 2" LDW B4E CSK	630	TR
1 Mop Plate	KM050 6" X 1" LDW B4E CSK	630	TR
1 Wall Bumper	1270CX	626	TR
3 Door Silencers	1229A	GREY	TR

SET #08 - Janitor

Doors: 09-1

3 Hinges	FBB191 4 1/2 X 4 1/2 NRP	US32D	ST
1 Lockset	45H-7D14R PATD	630	BE
	NOTE: Locked on Janitor Rm. side		
1 Door Closer	CLD-4551 STD W/PA BRKT HOARM	689	SD
1 Kick Plate	K0050 10" X 2" LDW B4E CSK	630	TR
1 Mop Plate	KM050 6" X 1" LDW B4E CSK	630	TR
1 Wall Bumper	1270CX	626	TR

3 Door Silencers	1229A	GREY	TR
------------------	-------	------	----

SET #09 - A.V. / Data

Doors: 06-1

3 Hinges	FBB191 4 1/2 X 4 1/2 NRP	US32D	ST
1 Lockset	45H-7D14R PATD	630	BE
1 Door Closer	CLD-4551 STD W/PA BRKT HOARM	689	SD
1 Kick Plate	K0050 10" X 2" LDW B4E CSK	630	TR
1 Wall Bumper	1270CX	626	TR
3 Door Silencers	1229A	GREY	TR

SET #10 - Check In

Doors: 00-1

3 Hinges	FBB179 4 1/2 X 4 1/2	US26D	ST
1 Lockset	45H-7A14R PATD	630	BE
1 Door Closer	CLD-4551 STD W/PA BRKT SN HOARM	689	SD
	NOTE: Mount closer on pull side		
1 Kick Plate	K0050 10" X 2" LDW B4E CSK	630	TR
1 Wall Bumper	1270CX	626	TR
1 Gasketing	5075 B @ Head & Jambs		NA

SET #11 - Restrooms

Doors: 01A-1, 02A-1

3 Hinges	FBB191 4 1/2 X 4 1/2 NRP	US32D	ST
1 Deadlock	8T3-7S PATD	630AM	BE
1 Push Plate	1809-4	630	TR
1 Door Pull	1194-4	630	TR
1 Door Closer	CLD-4551 STD W/PA BRKT SN HOARM	689	SD
	NOTE: Mount closer on pull side		
1 Kick Plate	K0050 10" X 2" LDW B4E CSK	630	TR
1 Mop Plate	KM050 6" X 1" LDW B4E CSK	630	TR
1 Wall Bumper	1270CX	626	TR
1 Gasketing	5075 B @ Head & Jambs		NA

NOTE: Deadbolt locked or unlocked with key in on outside cylinder. Thumb turn inside only retracts deadbolt if extended.

SET #12 - Consult Office

Doors: 03A-1

3 Hinges	FBB179 4 1/2 X 4 1/2 NRP	US26D	ST
1 Passage Set	45H-0N14R	626	BE
1 Wall Bumper	1270CX	626	TR

1 Hold Open	490	US260	RO
1 Gasketing	5075 B @ Head & Jambs		NA

SET #13 - Breakroom

Doors: 03-1

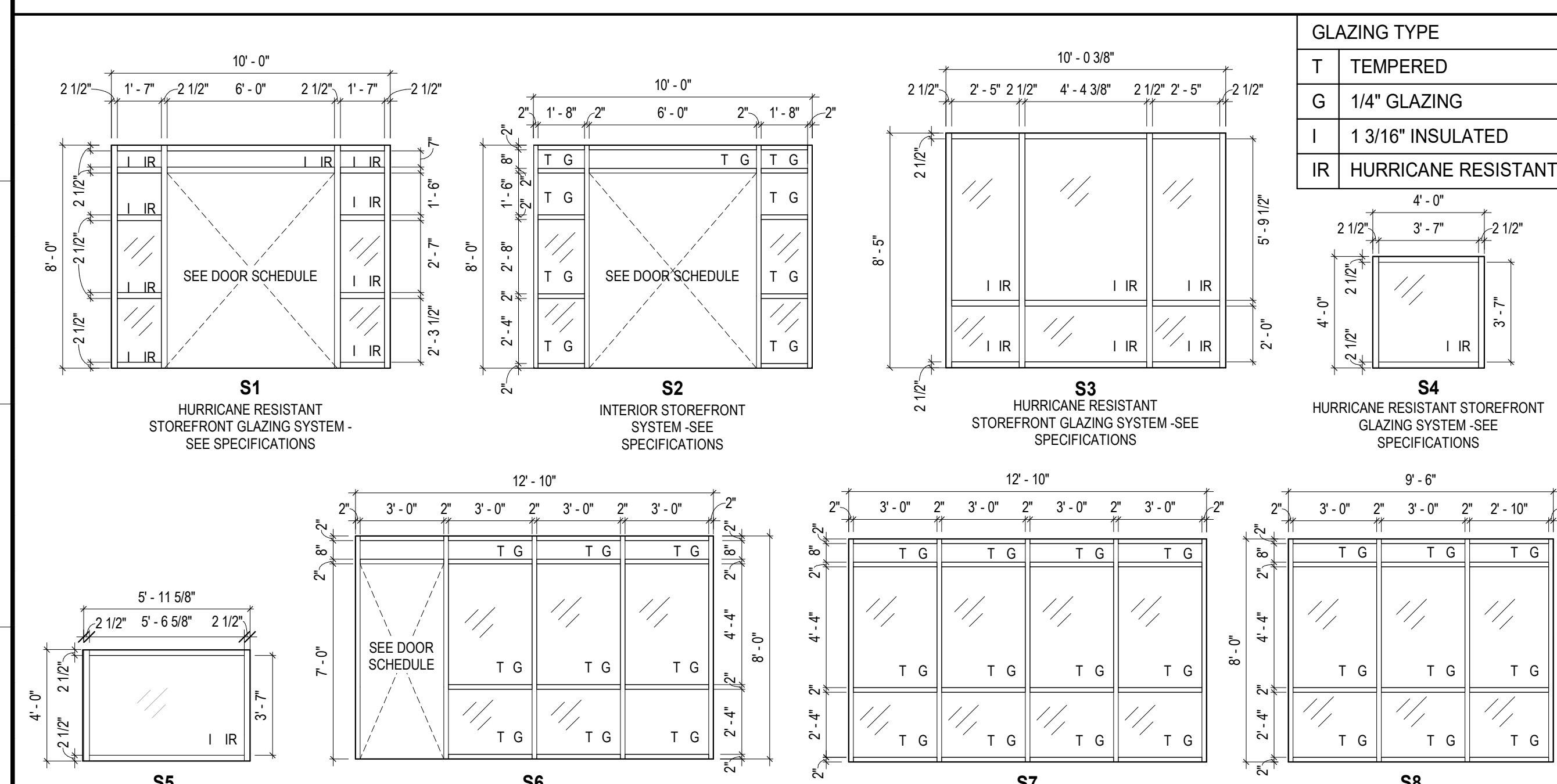
3 Hinges	FBB191 4 1/2 X 4 1/2 NRP	US32D	ST
1 Lockset	45H-7R14R PATD	626AM	BE
1 Door Closer	CLD-4551 CS SN	689	SD
1 Kick Plate	K0050 10" X 2" LDW B4E CSK	630	TR
1 Mop Plate	KM050 6" X 1" LDW B4E CSK	630	TR
1 Hold Open	490	US260	RO
1 Door Sweep	C627 A		NA
1 Gasketing	5075 B @ Head & Jambs		NA

Opening List

<u>Opening</u>	<u>Hdw Set</u>
00-1	10
00A-1	05
01A-1	11
01B-1	04
01C-1	03
02A-1	11
02B-1	04
02C-1	03
03-1	13
03A-1	12
04-1	02
04A-1	06
05-1	02
05A-1	06
06-1	09
08-1	07
09-1	08
V001	01
V002	01

END OF SECTION 08 71 00

STOREFRONT ELEVATIONS



GLAZING TYPE	
T	TEMPERED
G	1/4" GLAZING
I	1 3/16" INSULATED
IR	HURRICANE RESISTANT

DOOR SCHEDULE

DOOR NO.	TYPE	DOOR				FIRE RATING	HARDWARE	FRAME					COMMENTS
		WIDTH	HEIGHT	MATERIAL	FINISH			TYPE	MATERIAL	FINISH	JAMB	HEAD	
00-1	WD-1	3'-0"	7'-0"	WD	ST	N/A	10	F1/F1	HMS	PT	D14/A260	D10/A260	1,4
00A-1	HMSI-2	6'-0"	7'-0"	HMS	PT	1 HR	05	F1/F2	HMS	PT	SIM A10/A260	SIM A10/A260	2,4,10,11,14,18
01A-1	WD-1	3'-0"	7'-0"	WD	ST	N/A	11	F1/F1	HMS	PT	D14/A260	D10/A260	1,4
01B-1	SWG-1	3'-0"	7'-0"	SW	ST	N/A	04	F1/F1	SW	ST	D14/A260	D10/A260	1,6,1
01C-1	WDL-2	6'-0"	7'-0"	WD	ST	N/A	03	F1/F1	HMS	PT	D14/A260	D10/A260	1,4
02A-1	WD-1	3'-0"	7'-0"	WD	ST	N/A	11	F1/F1	HMS	PT	D14/A260	D10/A260	1,4
02B-1	SWG-1	3'-0"	7'-0"	SW	ST	N/A	04	F1/F1	SW	ST	D14/A260	D10/A260	1,6,1
02C-1	WDL-2	6'-0"	7'-0"	WD	ST	N/A	03	F1/F1	HMS	PT	D14/A260	D10/A260	1,4
03-1	WDG-1	3'-0"	7'-0"	WD	ST	N/A	13	F1/F1	HMS	PT	D14/A260	D10/A260	2,5,6,7,12,14
03A-1	WDG-1	3'-0"	7'-0"	WD	ST	N/A	12	F1/F1	HMS	PT	D14/A260	D10/A260	2,5,6,7,12,14
04-1	SF-1	3'-0"	7'-0"	ALUM	PF	N/A	02	-	ALUM	PF	TBD	TBD	1,8,5,7
04A-1	WD-2	6'-0"	7'-0"	WD	ST	N/A	06	F1/F1	HMS	PT	D14/A260	D10/A2.60	2
04B-1	FP-1	41'-9 3/4"	8'-10"	STL	PF	N/A	SEE SPECS	-	STL	PF	TBD	TBD	18,19,20
05-1	SF-1	3'-0"	7'-0"	ALUM	PF	N/A	02	-	ALUM	PF	TBD	TBD	1,8,5,7
05A-1	WD-2	6'-0"	7'-0"	WD	ST	N/A	06	F1/F1	HMS	PT	D14/A260	D10/A2.60	2,14
06-1	WD-1	3'-0"	7'-0"	WD	ST	N/A	09	F1/F1	HMS	PT	D14/A260	D10/A2.60	1,14
08-1	WD-1	4'-0"	7'-0"	WD	ST	N/A	07	F1/F1	HMS	PT	D14/A260	D10/A2.60	1,14
09-1	HMS-1	4'-0"	7'-0"	HMS	PT	N/A	08	F1/F1	HMS	PT	D14/A260	D10/A2.60	1,14
V00-1	SF-2	6'-0"	7'-0"	ALUM	PF	N/A	01	-	ALUM	PF	TBD	TBD	2,3,5,8,11,15
V00-2	SF-2	6'-0"	7'-0"	ALUM	PF	N/A	01	-	ALUM	PF	TBD	TBD	12,3,5,8,11,13

DOOR SCHEDULE COMMENTS

- CLOSER(WITH HOLD OPEN)
- CLOSER(WITHOUT HOLD OPEN)
- PANIC DEVICE
- PANIC DEVICE WITH BATTERY POWERED AUDIBLE ALARM
- TEMPERED GLAZING
- FROSTED GLAZING (WATER COLOR STYLE)
- 1/4" GLAZING
- INSULATED GLAZING
- 24" X 24" FIXED LOUVER IN DOOR PANEL
- FIRE RATED DOOR AND FRAME
- HURRICANE RESISTANT DOORS AND FRAME
- MANUAL HOLD OPEN
- CARD READER DEVICE LOCATED ON ADJACENT WALL - SEE SPECS AND PLANS
- KICK PLATE
- RAIN Drip EDGE
- ENTRY DOOR IS REQUIRED TO HAVE HURRICANE RESISTANT GLAZING
- WOOD ADA FIXED HANDLE
- ELECTRIC MOTOR - SEE ACCORDION FOLDING PARTITIONS SPEC
- (2) ELECTRIC KEY SWITCH - VERIFY LOCATION WITH OWNER
- MANUAL OVERRIDE REQUIRED

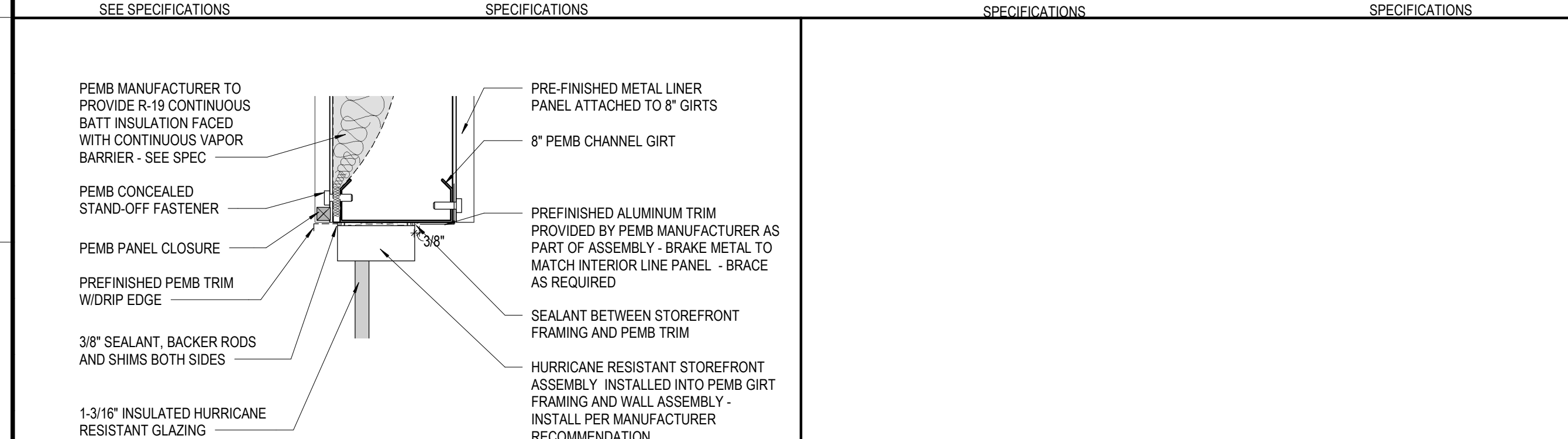
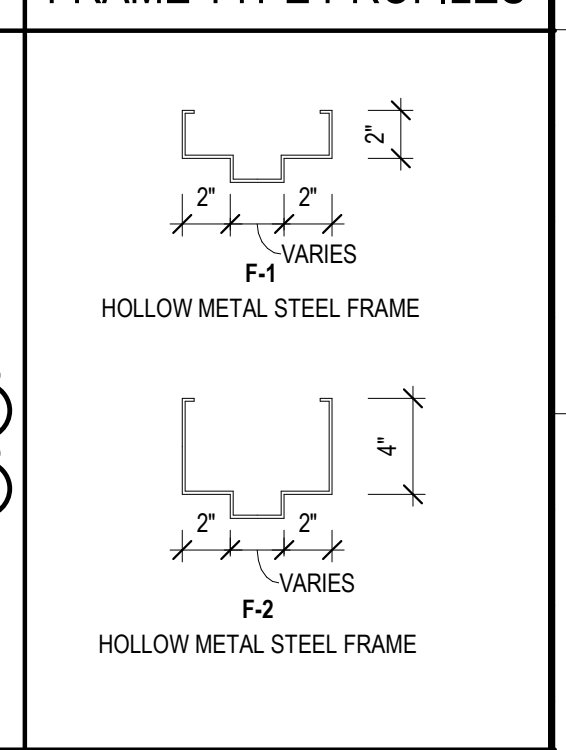
DOOR SCHEDULE MATERIALS LEGEND

ALUM	ALUMINUM
HMS	HOLLOW METAL INSULATED STEEL
HMS	HOLLOW METAL STEEL
IR	HURRICANE RESISTANT GLAZING
PF	PREFINISHED
PT	PAINTED
ST	STAIN
SW	SOLID WOOD SOLE CORE
WD	WOOD

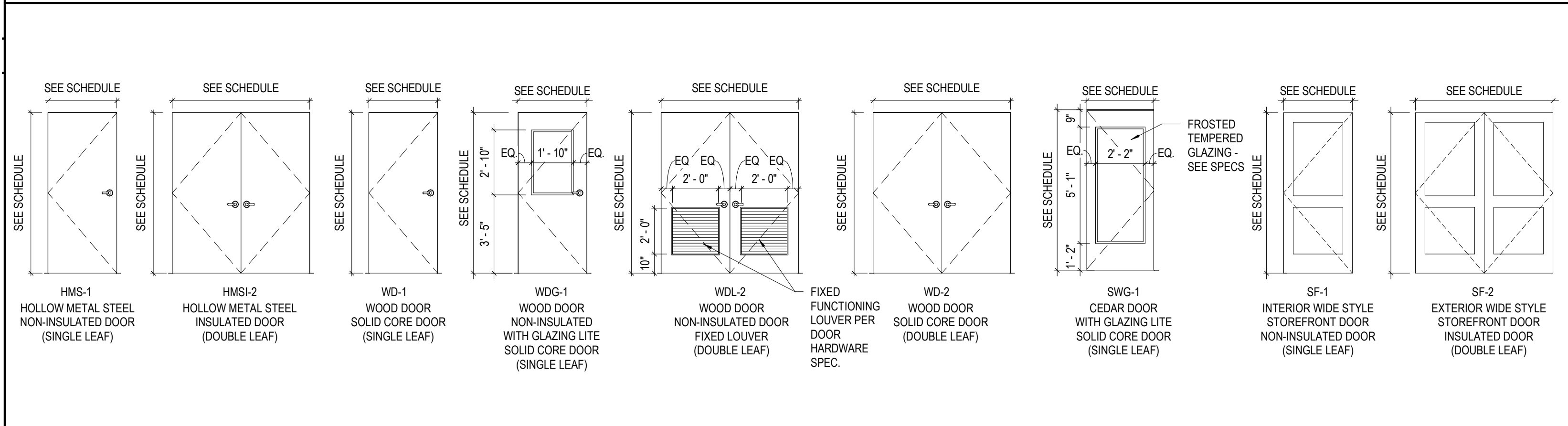
DOOR SCHEDULE - NOTES

- COVER AND PROTECT ALL NEW DOOR(S) AND/OR FRAME(S) THAT CONTAIN U.L. LISTING MARKER PLATES.
- IF A U.L. LISTING MARKER IS PAINTED OVER, DAMAGED, OR REMOVED DURING CONSTRUCTION THE ENTIRE DOOR OR DOOR FRAME MUST BE REPLACED AT THE EXPENSE OF THE GC NOT THE OWNER. (THE INSTALLATION WILL ALSO INCLUDE ANY DEMOLITION, PATCHING, PAINTING, ETC... TO THE SURROUNDING FINISHES THAT MAY BECOME DAMAGED BY THE REMOVAL/REPLACEMENT OF THE DOOR OR DOOR FRAME.
- THE U.L. LISTING MARKER PLATE MUST BE UNCOVERED, UNPAINTED AND VISIBLE FOR INSPECTION.
- DOOR HARDWARE SET SCHEDULED CAN BE REFERENCED IN THE HARDWARE SPECIFICATION.
- DOOR HARDWARE FOR SAUNA DOOR TO BE IDENTIFIED IN THE SAUNA SPECIFICATION.
- SEE PLANS FOR GATE LOCATION(S)
- GC MUST ENSURE DOORS MEET AND EXCEED LOCAL ORDINANCE REQUIREMENTS FOR COASTAL AREA PRIOR TO SUBMITTING SHOP DRAWINGS TO ARCHITECT FOR REVIEW.
- DOOR HARDWARE MANUFACTURER OR INSTALLER TO PROVIDE KEY BOX WITH KEYS INSTALLED, TAGGED, AND ORGANIZED PRIOR TO SUBSTANTIAL COMPLETION - INSTALLER AND GC TO COORDINATE BOX LOCATION WITH OWNER PRIOR TO INSTALL.

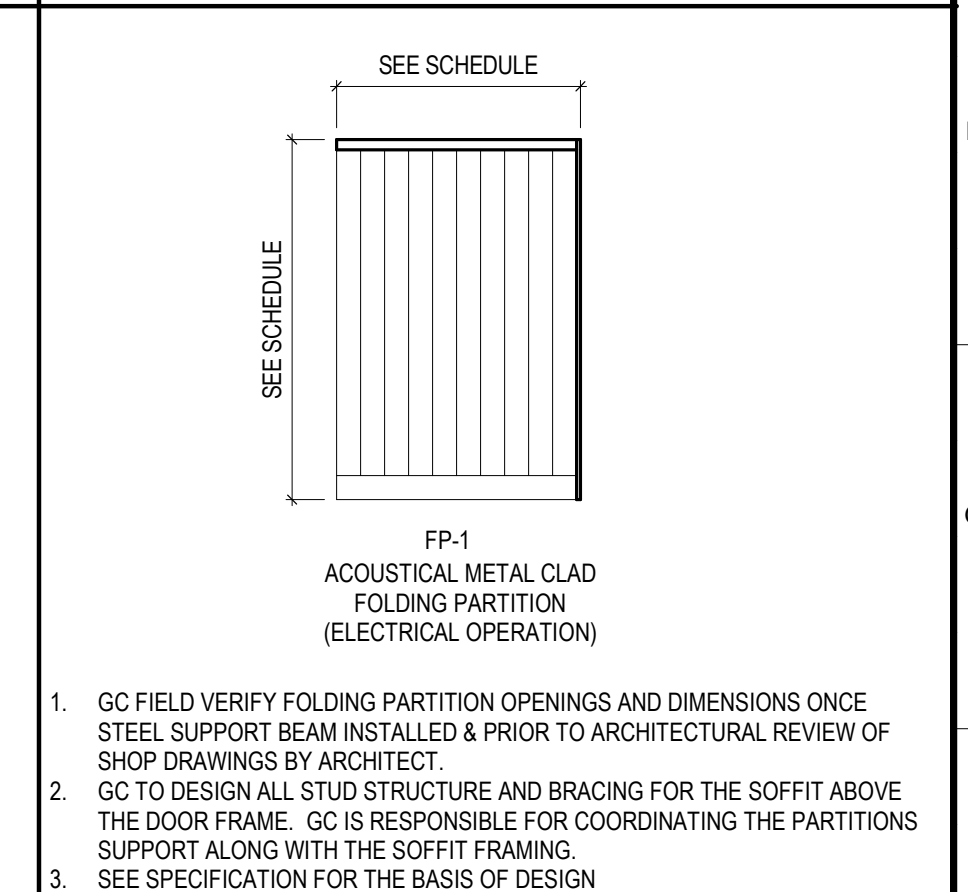
FRAME TYPE PROFILES



DOOR PANEL TYPE(S)

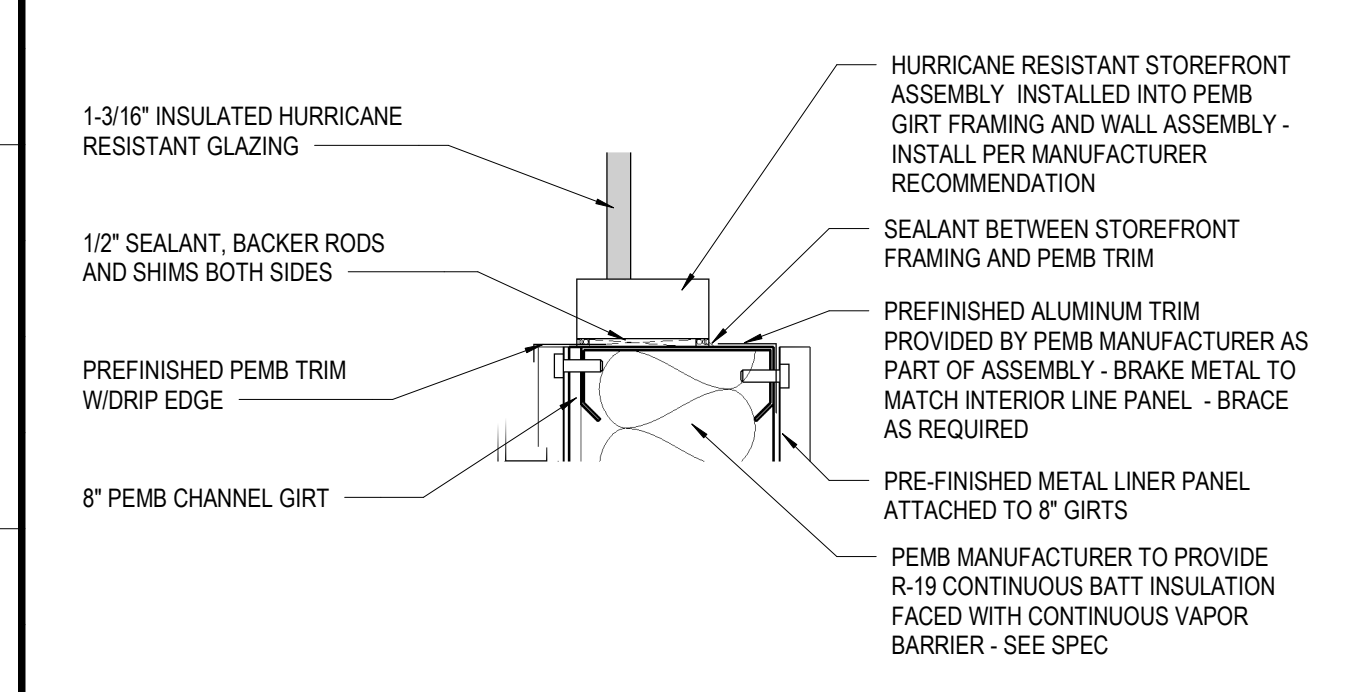


FOLDING PARTITION TYPE(S)



H1 HEAD & JAMB DETAIL @ CLERESTORY STOREFRONT

SCALE: 1 1/2" = 1'-0"



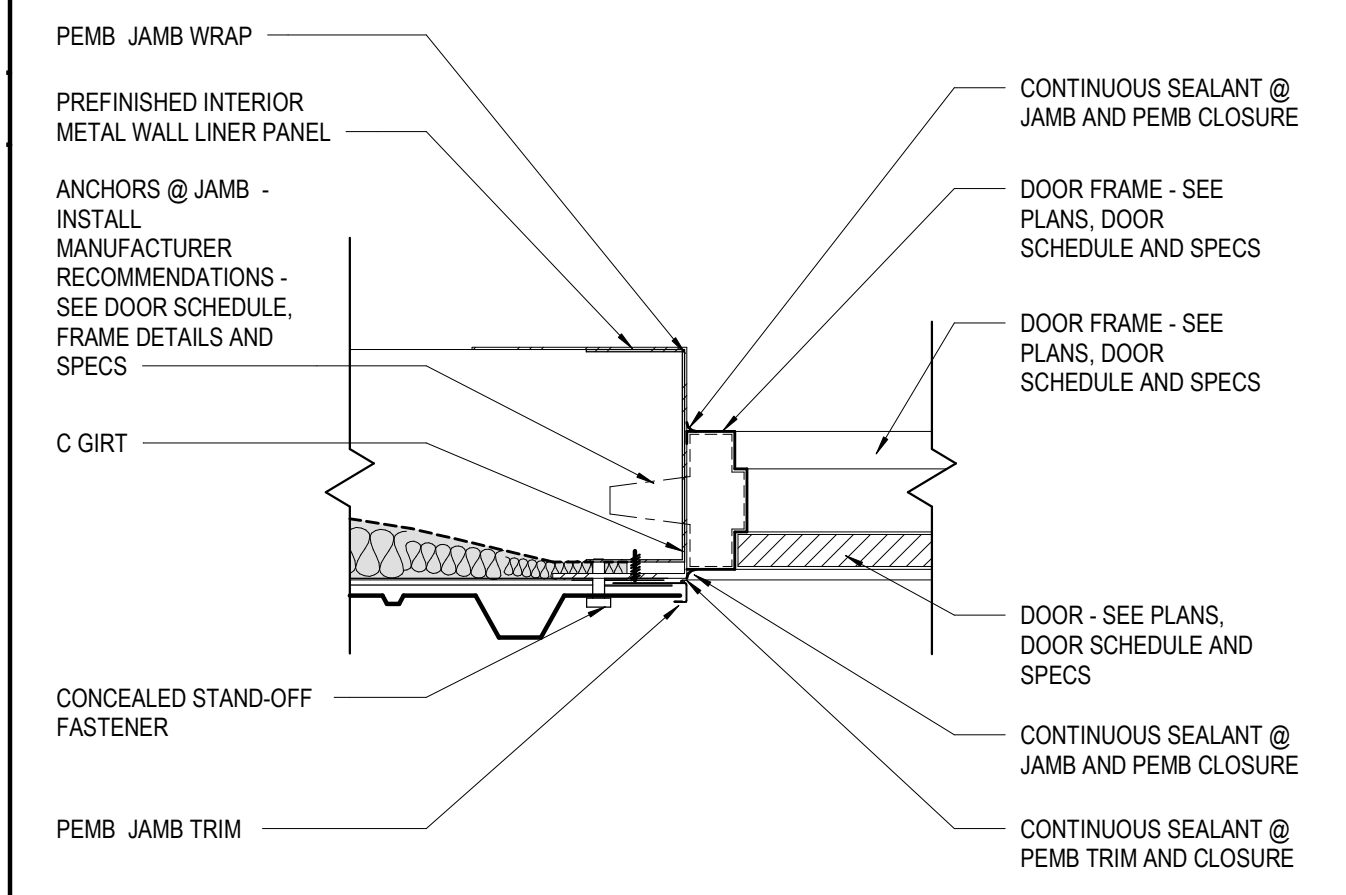
F1 SILL DETAIL @ CLERESTORY STOREFRONT

SCALE: 1 1/2" = 1'-0"



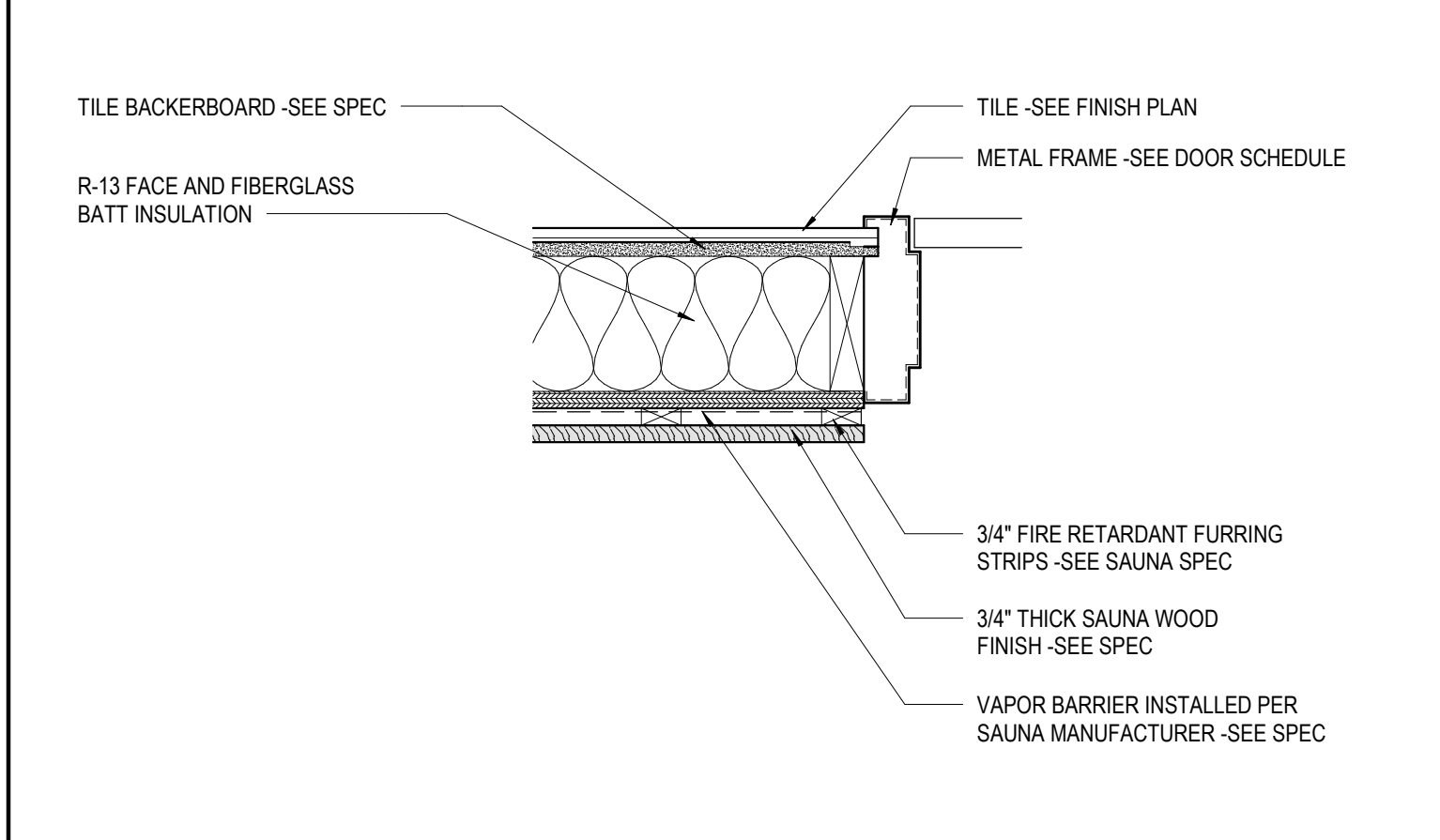
D12 PEMB HEADER DETAIL @ EXTERIOR

SCALE: 1 1/2" = 1'-0"



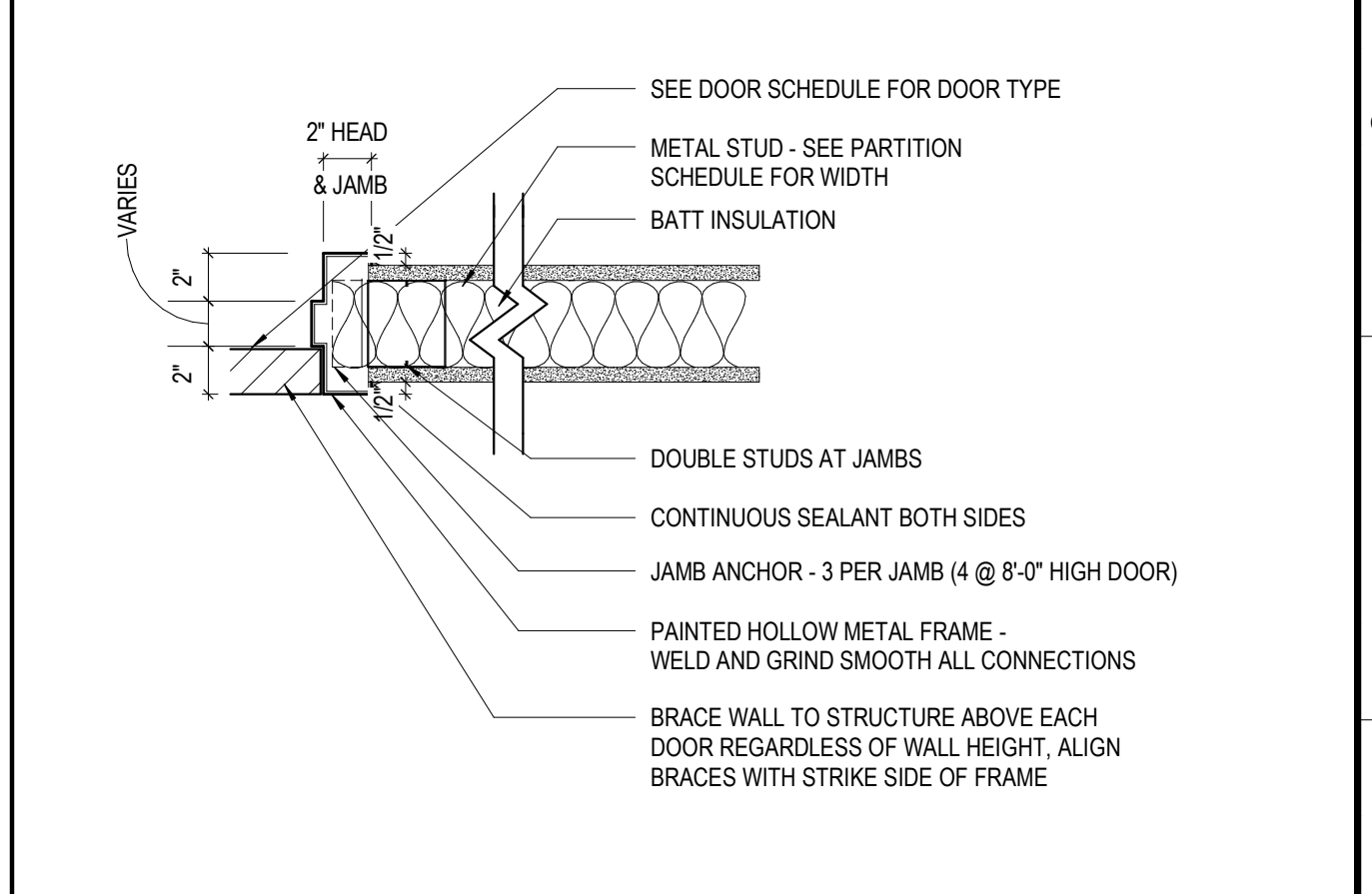
D8 HEAD DETAIL @ SAUNA

SCALE: 1 1/2" = 1'-0"



D15 HEAD DETAIL @ GYP PARTITION

SCALE: 1 1/2" = 1'-0"



A4 JAMB DETAIL @ VESTIBULE STOREFRONT

SCALE: 1 1/2" = 1'-0"



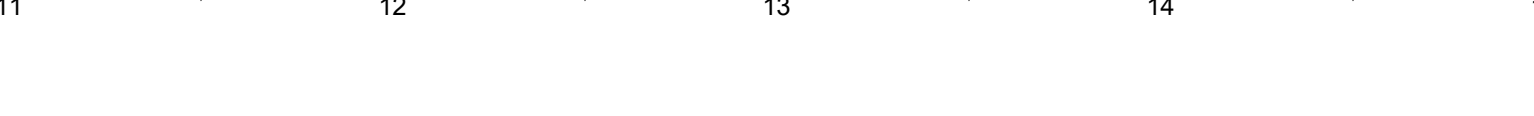
A12 PEMB JAMB DETAIL @ EXTERIOR

SCALE: 1 1/2" = 1'-0"



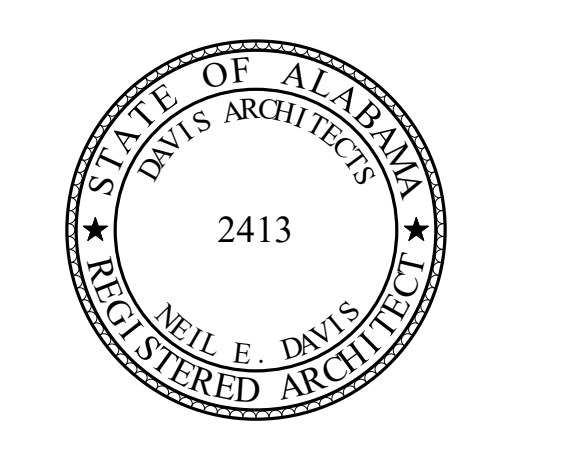
A8 JAMB DETAIL @ SAUNA

SCALE: 1 1/2" = 1'-0"



A15 JAMB DETAIL @ GYP PARTITION

SCALE: 1 1/2" = 1'-0"



ORANGE BEACH RECREATION
COMPLEX NEW ADULT
FITNESS CENTER



CITY OF ORANGE BEACH ;
ORANGE BEACH, AL

DAVIS
ARCHITECTS

OWNER
CITY OF ORANGE BEACH
PO BOX 458
ORANGE BEACH, ALABAMA 36561
251-981-69792
ATTN: KEN GRIMES, JR.

ASSOCIATE ARCHITECT
MCCOLLOUGH ARCHITECTURE
4790 MAIN ST #209
ORANGE BEACH, AL 36561
251-988-7222
ATTN: JIM HARTSELL / JEFFREY MENASCO

ARCHITECT
DAVIS ARCHITECTS, INC.
120 23RD STREET SOUTH
BIRMINGHAM, AL 35233
205-322-7482
ATTN: JIM HARTSELL / JEFFREY MENASCO

CIVIL ENGINEER
SAWGRASS CONSULTING, LLC
11443 OLD HIGHWAY 31
SPANISH FORT, AL 36527
251-544-7900
ATTN: ERIC E. GOWDIN / DOUG CHAFFIN

STRUCTURAL ENGINEER
MBA ENGINEERS
300 20TH ST. N. SUITE 100
BIRMINGHAM, AL 35203
205-323-6388
ATTN: CHRIS DEARMON / MARK BOGER

MECHANICAL / PLUMBING ENGINEER
GULF STATES ENGINEERING
600 AZALEA ROAD
MOBILE, AL 36609
251-460-4646
ATTN: TOM WADE / BRIAN DOVE

FIRE PROTECTION ENGINEER
GULF STATES ENGINEERING
600 AZALEA ROAD
MOBILE, AL 36609
251-460-4646
ATTN: TOM WADE / BRIAN DOVE

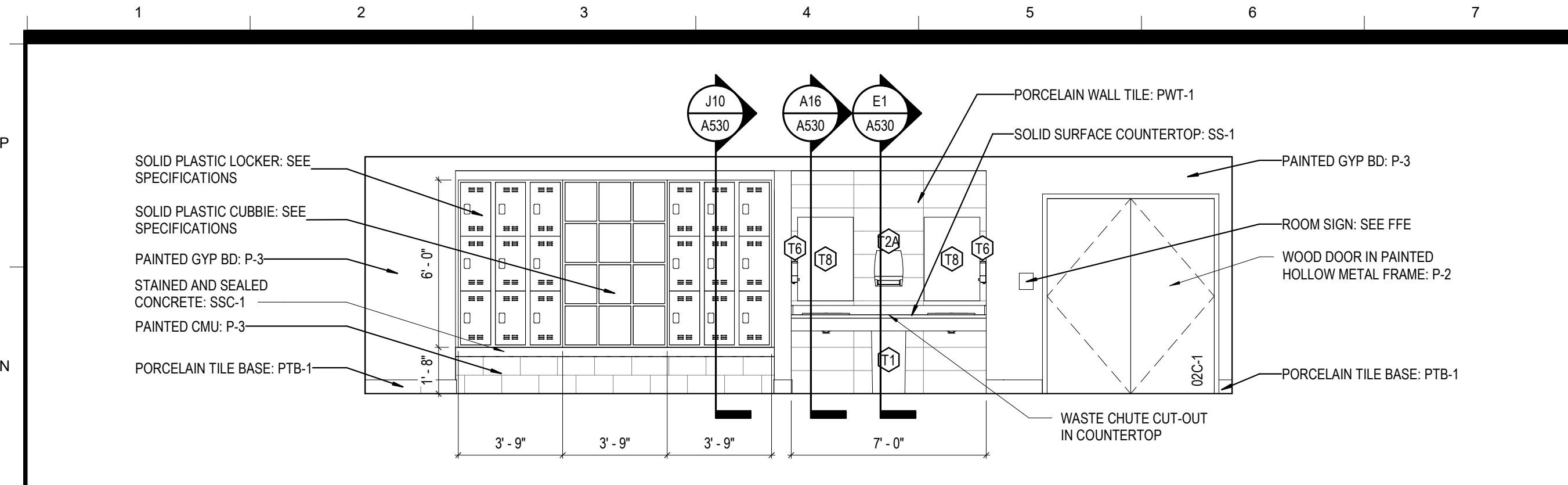
ELECTRICAL ENGINEER
GULF STATES ENGINEERING
600 AZALEA ROAD
MOBILE, AL 36609
251-460-4646
ATTN: JERRY ONWU / SID SNYDER

REV	DATE	DESCRIPTION
1	03/20/2020	ADDENDUM 1

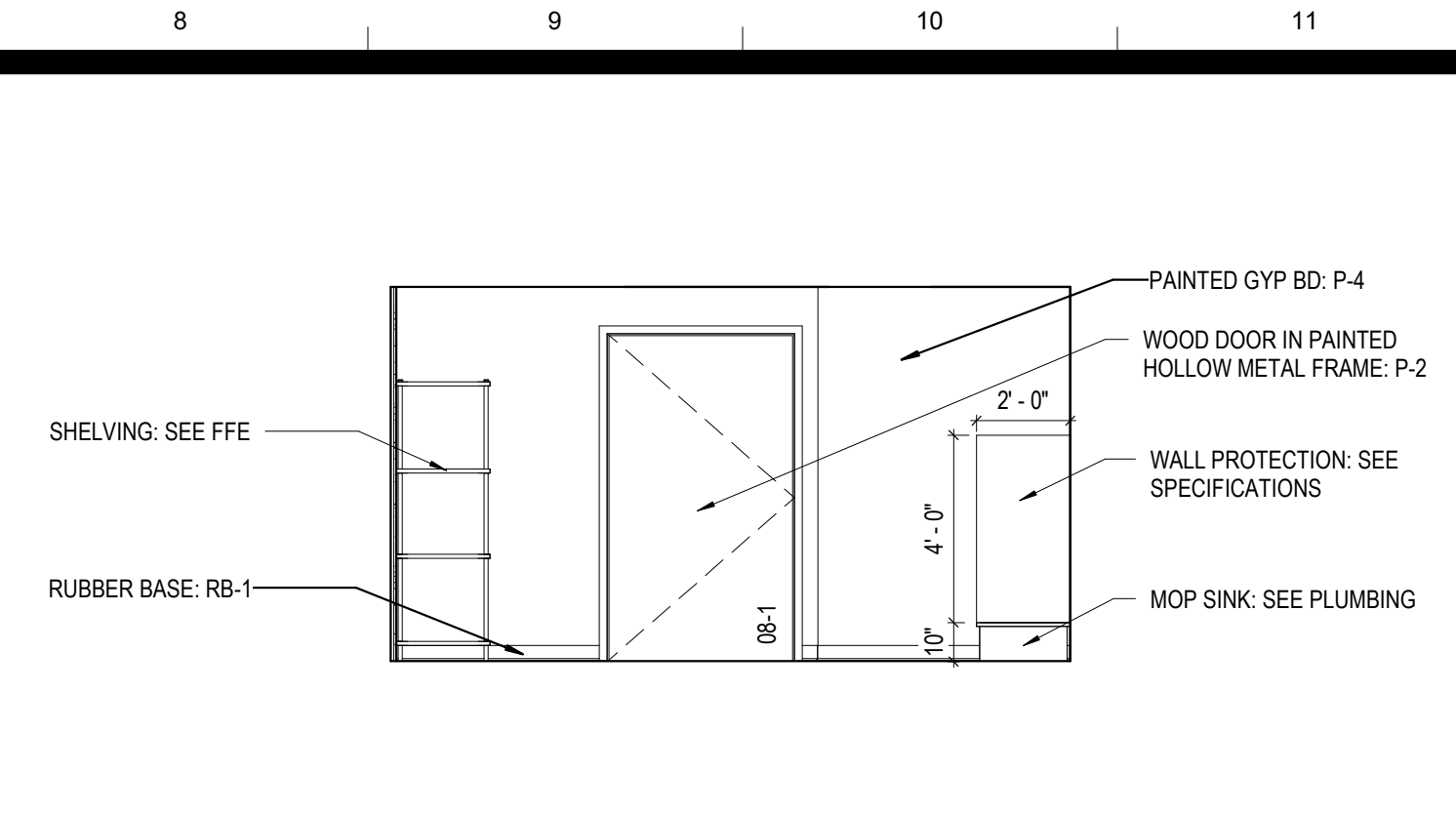
DATE	2-14-2020
PERCENT	100% BID DOCUMENTS
PROJECT NO.	ADDENDUM 1
DRAWING NO.	3891.02

DOOR SCHEDULE AND ELEVATIONS

A260



M1 ELEVATION @ MENS RESTROOM 02
SCALE: 1/4" = 1'-0"



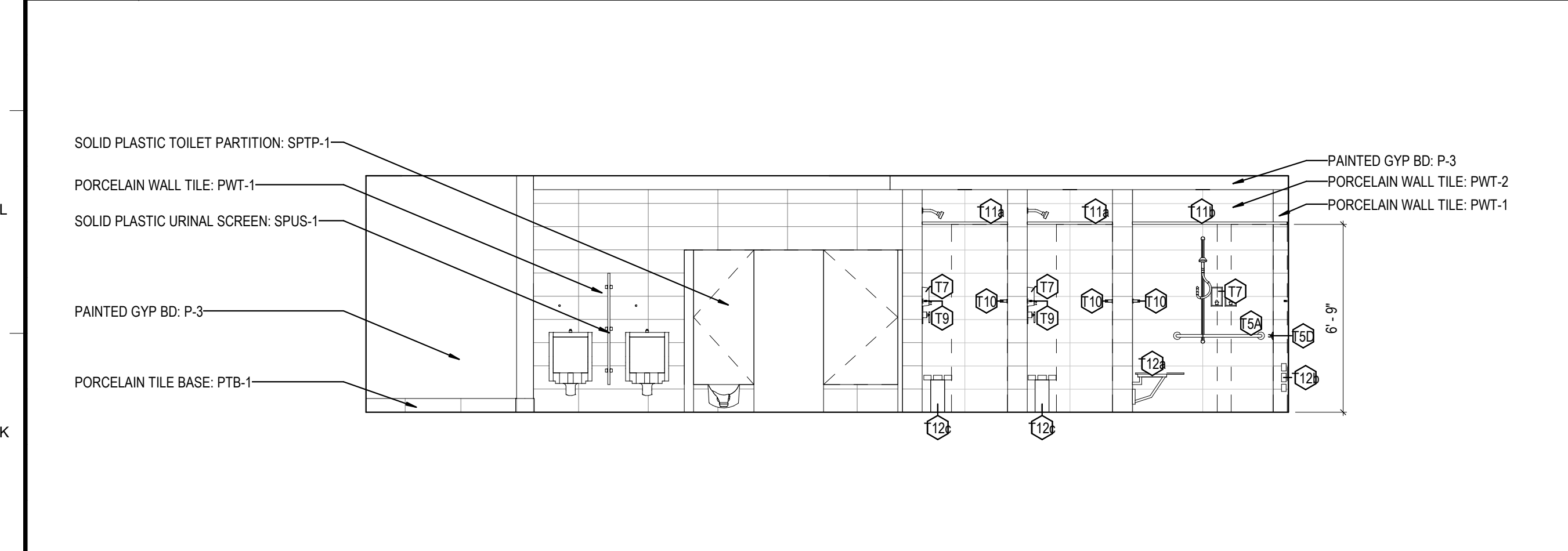
M8 INTERIOR ELEVATION @ JANITOR 08
SCALE: 1/4" = 1'-0"



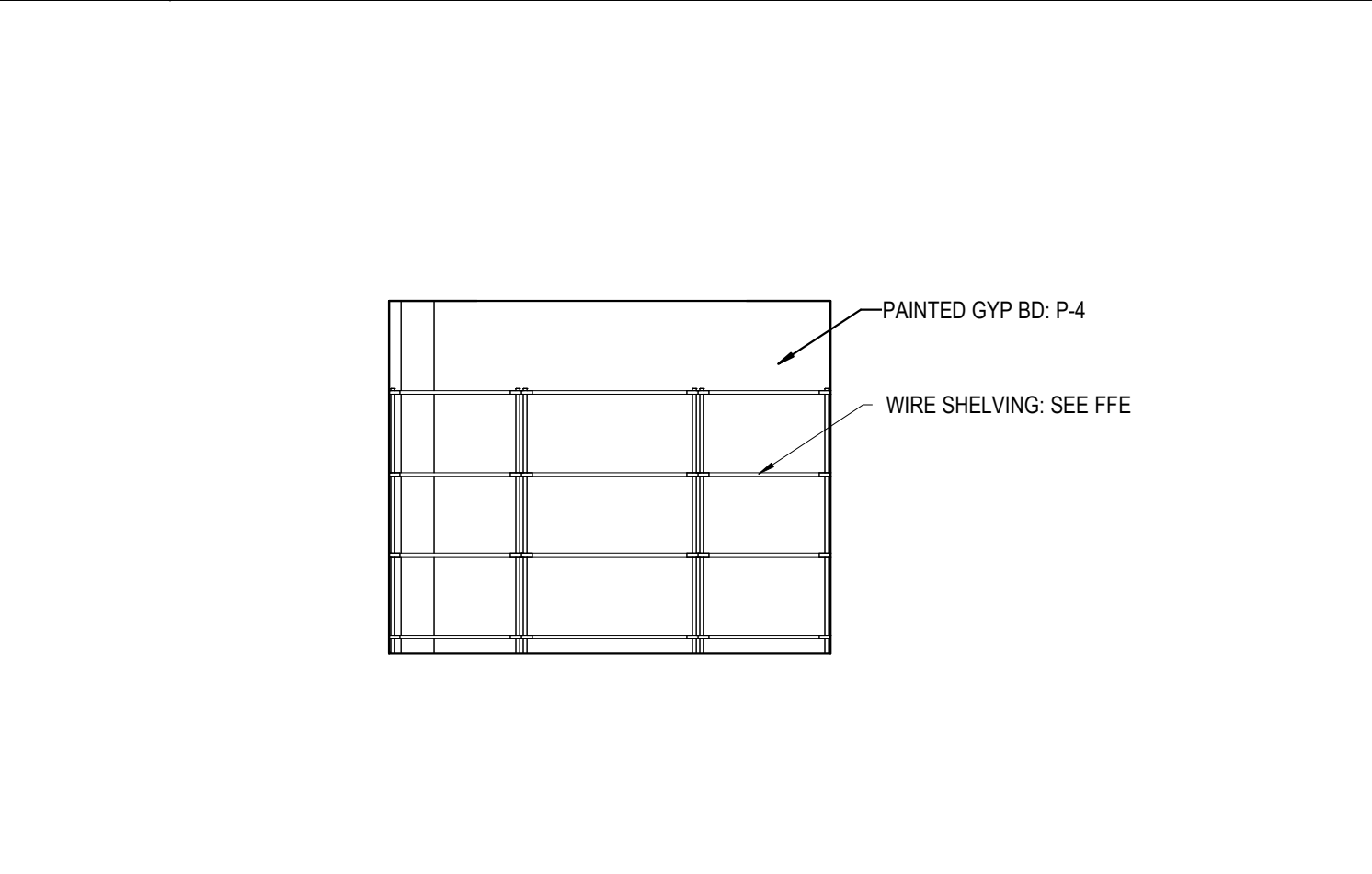
J12 ENLARGED PLAN @ JANITOR 08
SCALE: 1/4" = 1'-0"

TOILET ACCESSORY SCHEDULE	
MARK	DESCRIPTION
T1	WASTE RECEPTACLE
T2A	PAPER TOWEL DISPENSER
T3	SANITARY NAPKIN DISPOSAL UNIT
T4	TOILET PAPER DISPENSER - JUMBO
T5A	GRAB BAR- 36"
T5B	GRAB BAR- 42"
T5C	VERTICAL GRAB BAR- 18"
T5D	GRAB BARS 24"
T6	SOAP DISPENSER
T7	BODY WASH/SHAMPOO DISPENSER (SHOWER)
T8	LARGE MIRROR
T9	DOUBLE ROBE HOOK
T10	TOWEL BAR
T11a	SHOWER CURTAIN, ROD & RINGS - 3'-0" WIDE
T11b	SHOWER CURTAIN, ROD & RINGS - 6'-0" WIDE
T12a	TEAK SHOWER SEAT - ADA
T12b	TEAK SHOWER SEAT - FOLDING
T12c	TEAK SHOWER SEAT - FREE STANDING

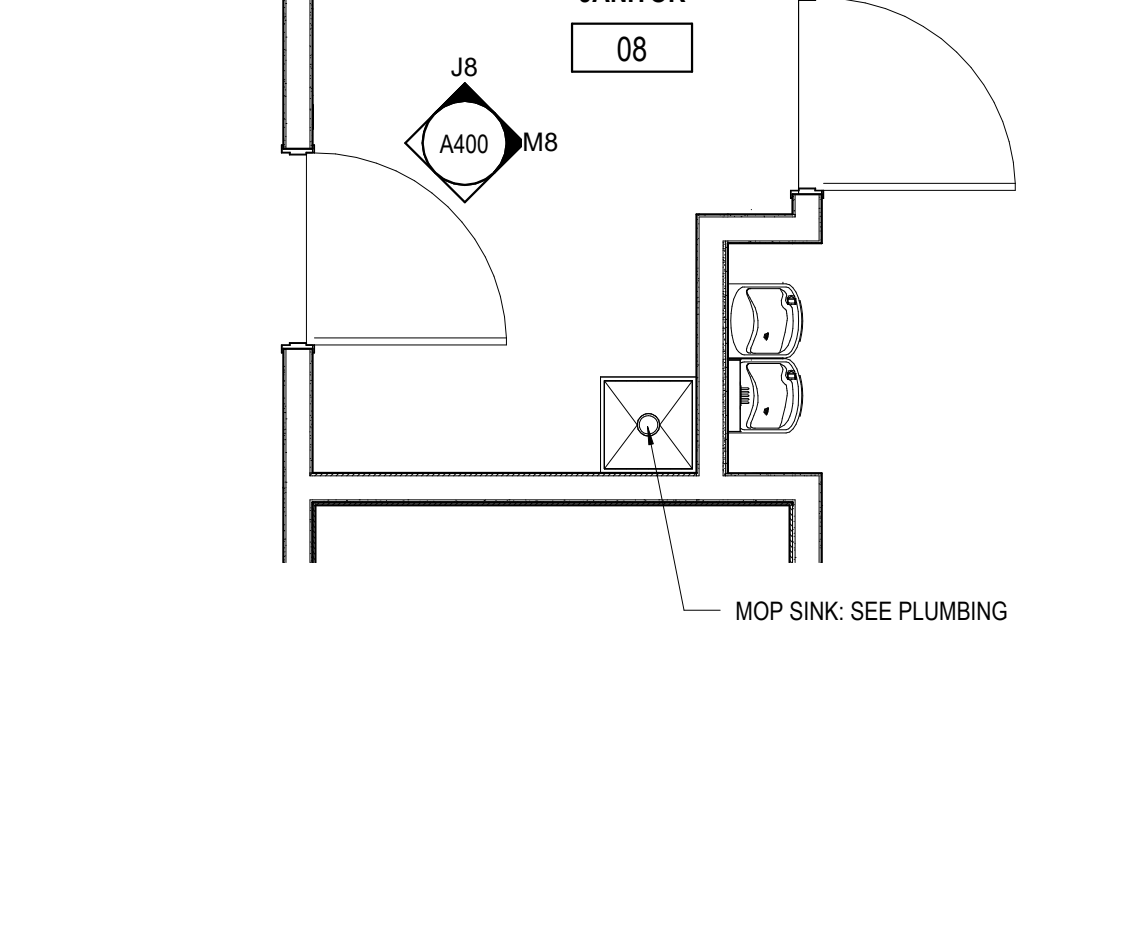
- GENERAL NOTES**
1. MOUNTING HEIGHTS PER MANUFACTURER'S RECOMMENDATIONS AND CODES (LOCAL, STATE, ADA, ETC.)
 2. REFER TO SHEET G1.3 FOR PROJECT STANDARDS, MOUNTING HEIGHTS, AND LOCATIONS OF TOILET ACCESSORIES.
 3. TOILET ACCESSORIES TO BE STAINLESS STEEL WITH NO. 4 FINISH (UNLESS OTHERWISE NOTED).
 4. MODEL NUMBERS BY BOBRICK OR PRIOR APPROVED EQUAL. SEE SPEC SECTION 102800.
 5. PROVIDE "TRAP WRAP" AT EXPOSED PIPES - SEE SPECIFICATIONS.
 6. PROVIDE MOISTURE RESISTANT GWB AT ALL TOILETS WHERE GWB IS SPECIFIED.
 7. PROVIDE TILE BACKERBOARD AT ALL WALL TILE ON ALL METAL STUD FRAMED WALLS. SEE ELEVATIONS AND FINISH PLANS FOR EXTENT OF PATTERN.
 8. PROVIDE SOAP DISPENSERS (T6) AT ALL SINKS SPECIFIED BY THE PLUMBING ENGINEER.
 9. PROVIDE MOP AND BROOM HOLDER IN ALL JANITOR CLOSETS, TYPICAL. SEE PLUMBING FOR SPECIFICATION.
 10. SCHLUTER WUOLFEK, OR APPROVED, SHALL BE USED AT ALL OUTSIDE CORNERS ON WALLS CLAD IN PORCELAIN AND CERAMIC WALL TILE.
 11. SCHLUTER JOLLY, OR APPROVED EQUAL, SHALL BE USED AT ALL PORCELAIN FLOOR TILE / PORCELAIN, CERAMIC, OR GLASS WALL TILE INTERSECTIONS.
 12. SCHLUTER DILEX-HKS, OR APPROVED EQUAL, SHALL BE USED AT ALL PORCELAIN FLOOR TILE / PORCELAIN CERAMIC WALL TILE INTERSECTIONS.
 13. URINAL SCREENS 24" DEEP. UNLESS OTHERWISE NOTED.
 14. IN ALL ADA SHOWER STALLS PROVIDE COLLAPSIBLE WATER RETAINER THRESHOLD IN COLOR CHARCOAL.



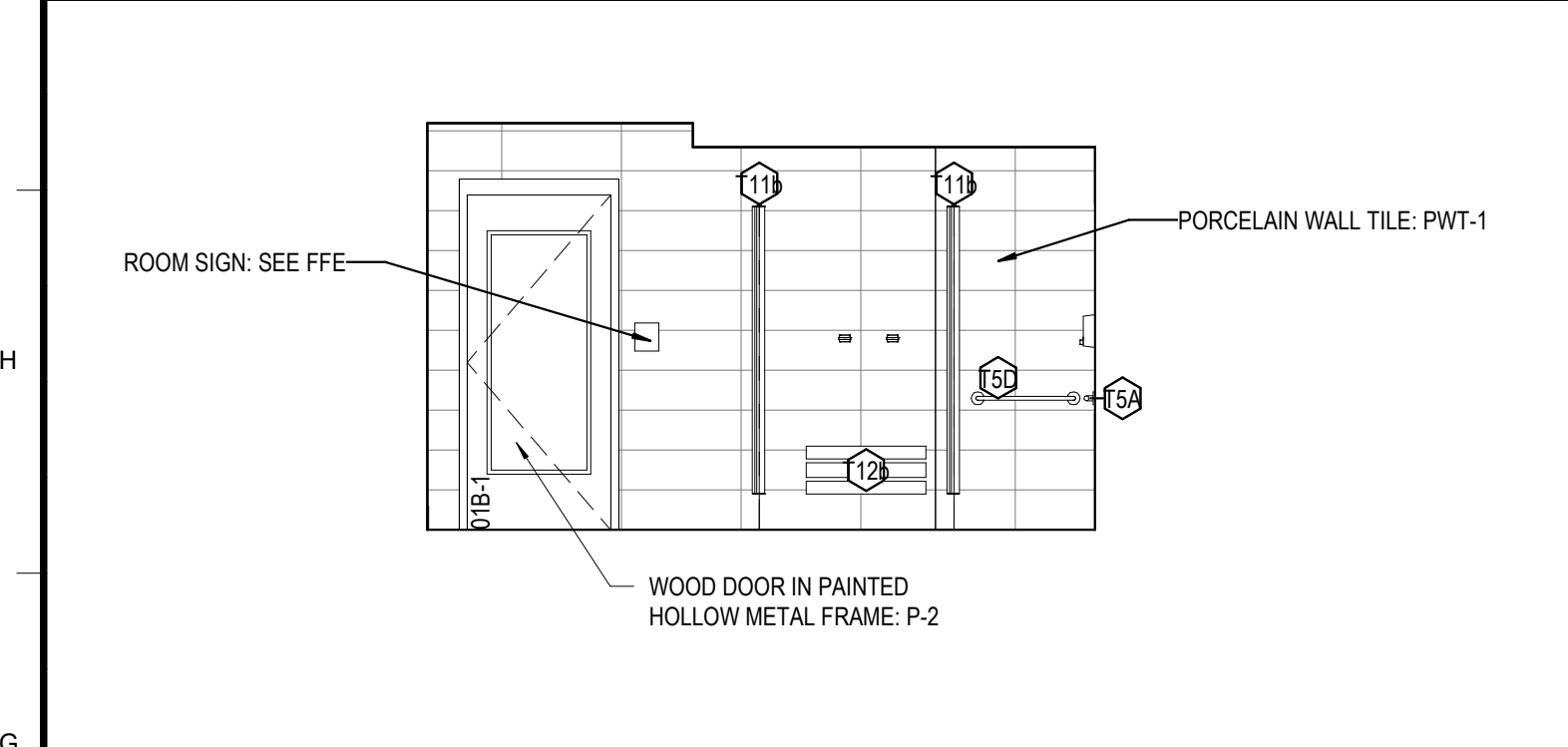
J1 ELEVATION @ MENS RESTROOM 02
SCALE: 1/4" = 1'-0"



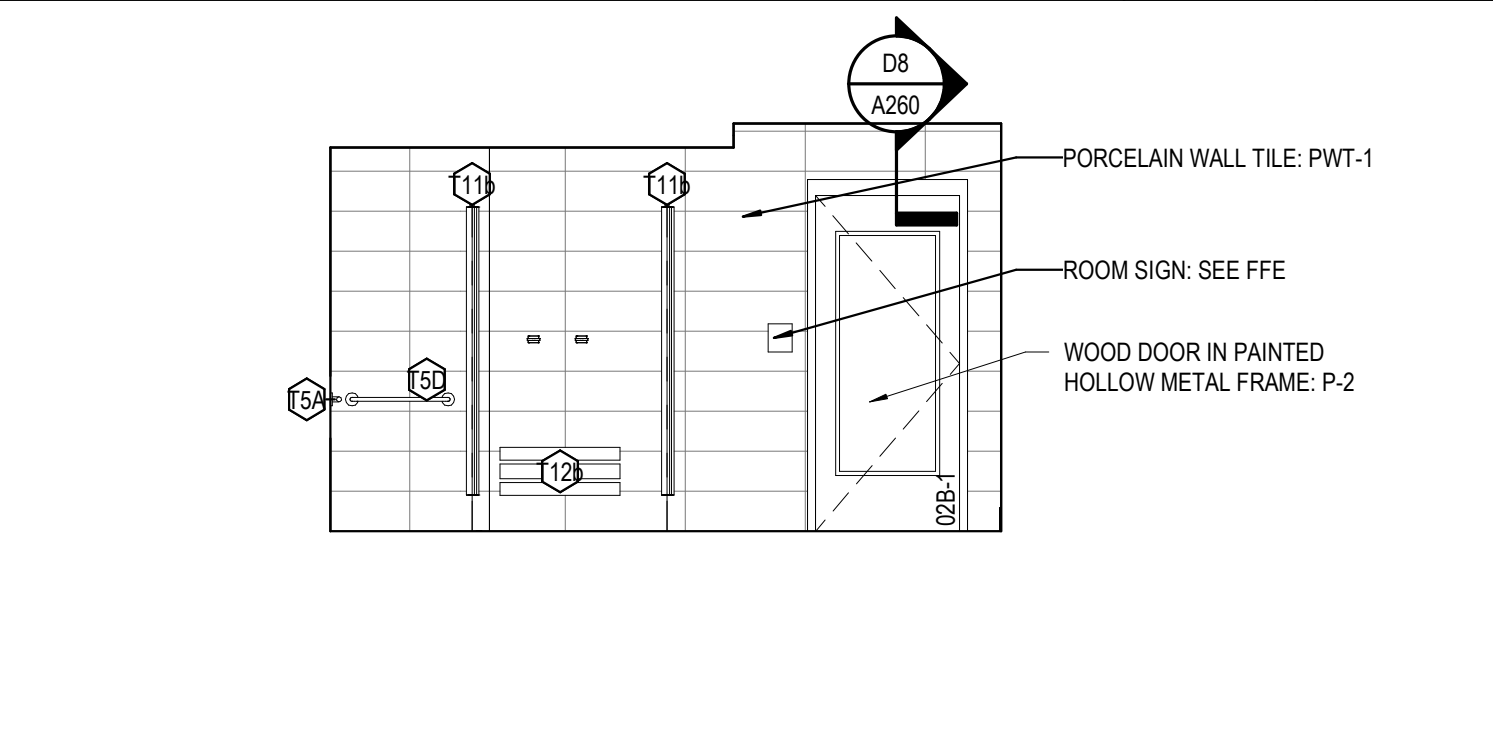
J8 INTERIOR ELEVATION @ JANITOR 08
SCALE: 1/4" = 1'-0"



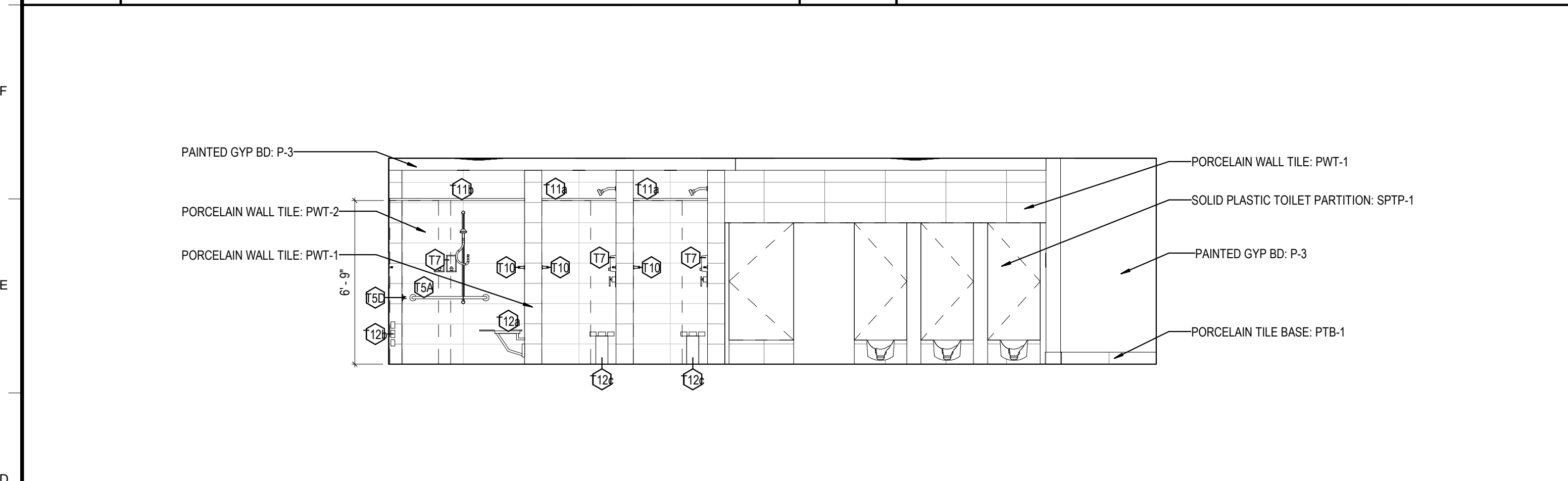
J12 ENLARGED PLAN @ JANITOR 08
SCALE: 1/4" = 1'-0"



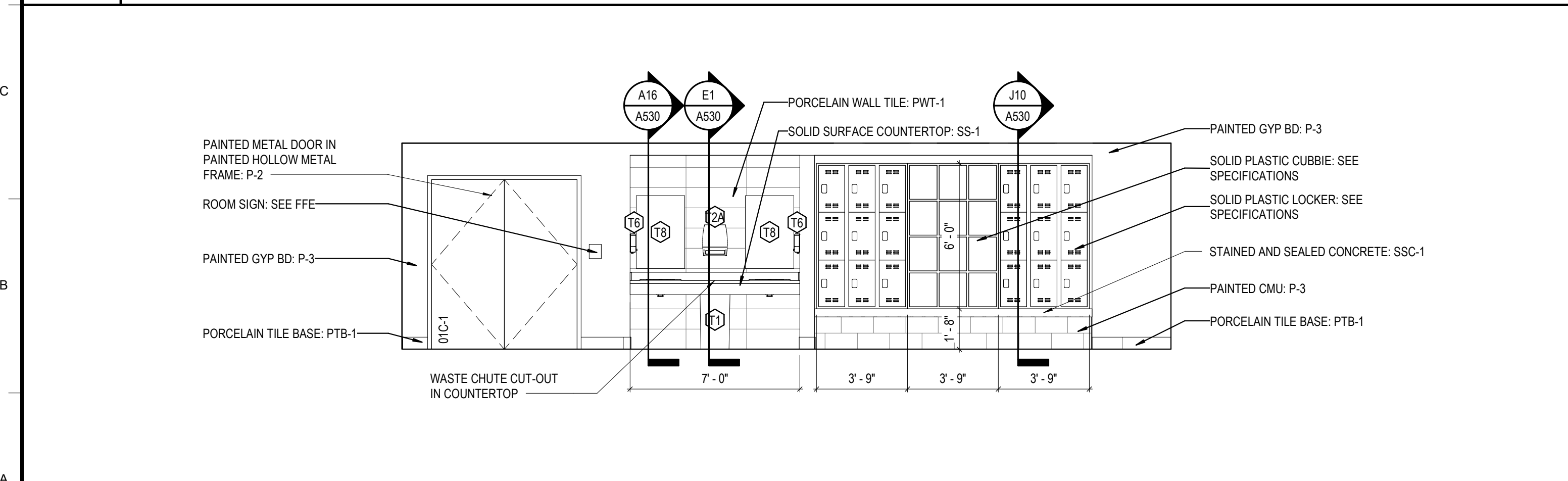
G1 ELEVATION @ WOMENS RESTROOM 01
SCALE: 1/4" = 1'-0"



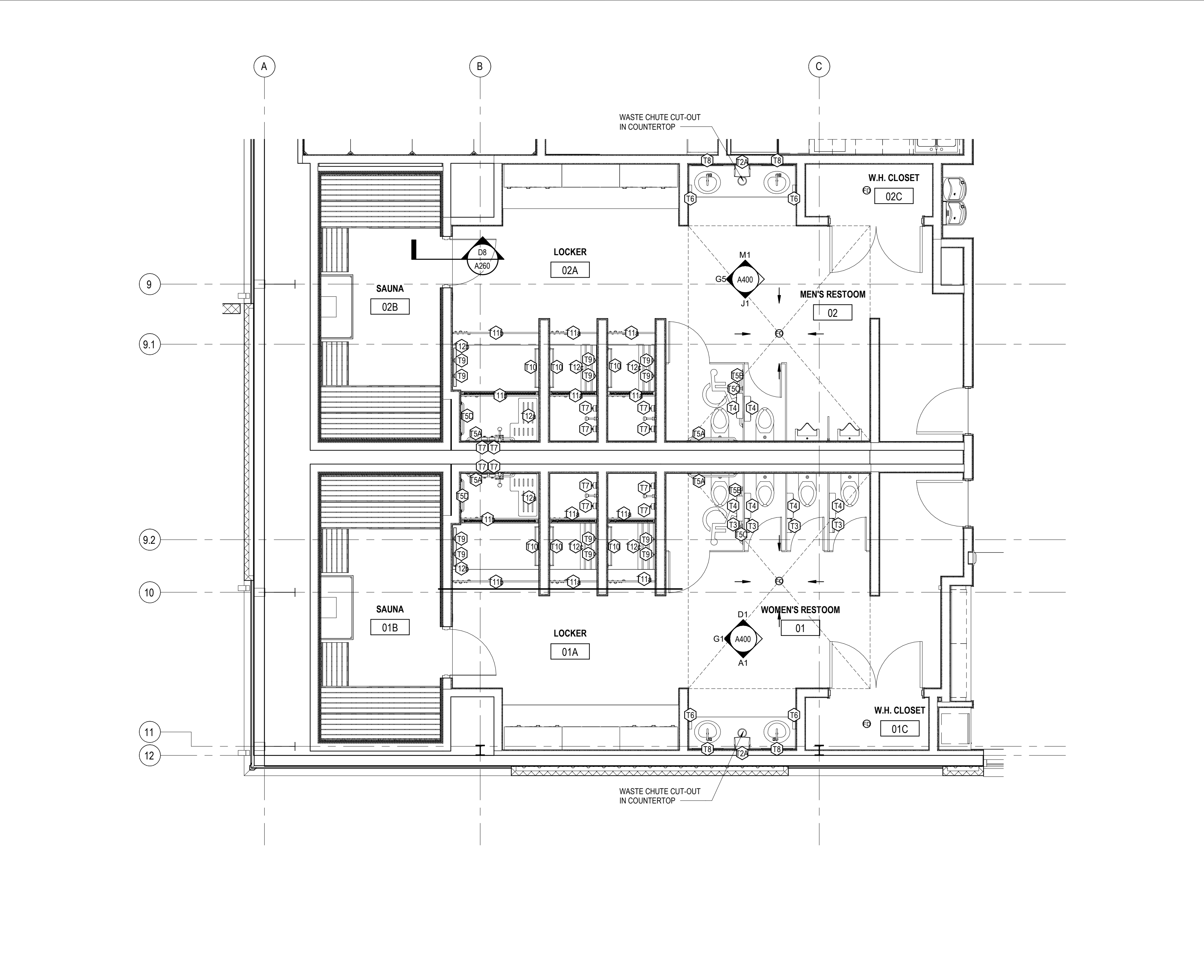
G5 ELEVATION @ MENS RESTROOM 02
SCALE: 1/4" = 1'-0"



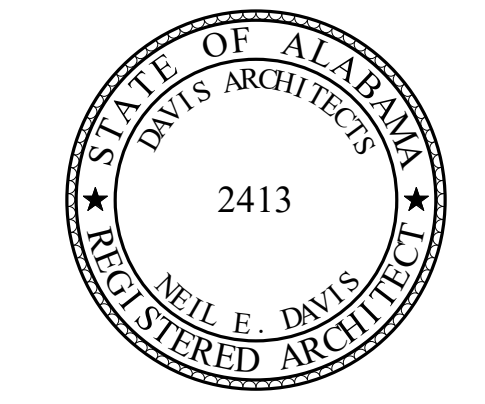
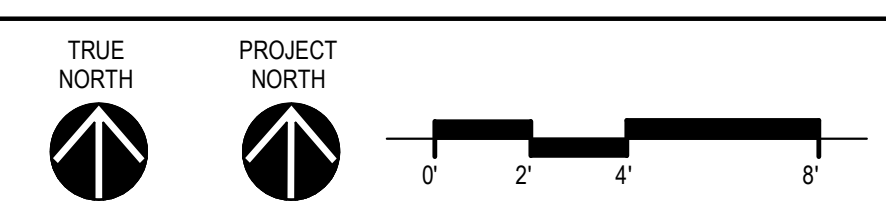
D1 ELEVATION @ WOMENS RESTROOM 01
SCALE: 1/4" = 1'-0"



A1 ELEVATION @ WOMENS RESTROOM 01
SCALE: 1/4" = 1'-0"



A9 ENLARGED RESTROOM PLANS @ MEN'S 02 & WOMEN'S 01 RESTROOMS
SCALE: 1/4" = 1'-0"



**ORANGE BEACH RECREATION
COMPLEX NEW ADULT
FITNESS CENTER**



CITY OF ORANGE BEACH ;
ORANGE BEACH, AL

DAVIS

OWNER
CITY OF ORANGE BEACH
PO BOX 458
ORANGE BEACH, ALABAMA 36561
251-981-6979
ATTN: KEN GRIMES, JR.

ASSOCIATE ARCHITECT
MCCOLLOUGH ARCHITECTURE
4790 MAIN ST #209
ORANGE BEACH, AL 36561
251-988-7222
ATTN: STED MCCOLLOUGH

ARCHITECT
DAVIS ARCHITECTS, INC.
132 29RD STREET SOUTH
BIRMINGHAM, AL 35233
205-322-7482
ATTN: JIM HARTSELL / JEFFREY MENASCO

CIVIL ENGINEER
SAWGRASS CONSULTING, LLC
11443 OLD HIGHWAY 31
SPANISH FORT, AL 36527
251-544-7900
ATTN: ERIC E. GODWIN / DOUG CHAFFIN

STRUCTURAL ENGINEER
MBA ENGINEERS
300 20TH ST. N. SUITE 100
BIRMINGHAM, AL 35203
205-323-6388
ATTN: CHRIS DEARMON / VAN SIMPSON

MECHANICAL / PLUMBING ENGINEER
GULF STATES ENGINEERING
600 AZALEA ROAD
MOBILE, AL 36609
251-480-4646
ATTN: CHRIS DEARMON / VAN SIMPSON

FIRE PROTECTION ENGINEER
GULF STATES ENGINEERING
600 AZALEA ROAD
MOBILE, AL 36609
251-480-4646
ATTN: TOM WADE / BRIAN DOVE

ELECTRICAL ENGINEER
GULF STATES ENGINEERING
600 AZALEA ROAD
MOBILE, AL 36609
251-480-4646
ATTN: JERRY ONWU / SID SNYDER

REV	DATE	DESCRIPTION
1	03/04/2020	ADDENDUM 1

DATE	2-14-2020
SCALE	100% BID DOCUMENTS
PROJECT NO.	ADDENDUM 1
DRAWN BY	DAVIS ARCHITECTS
CHECKED BY	3891.02

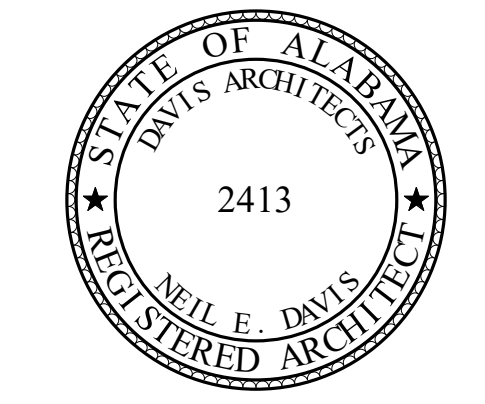
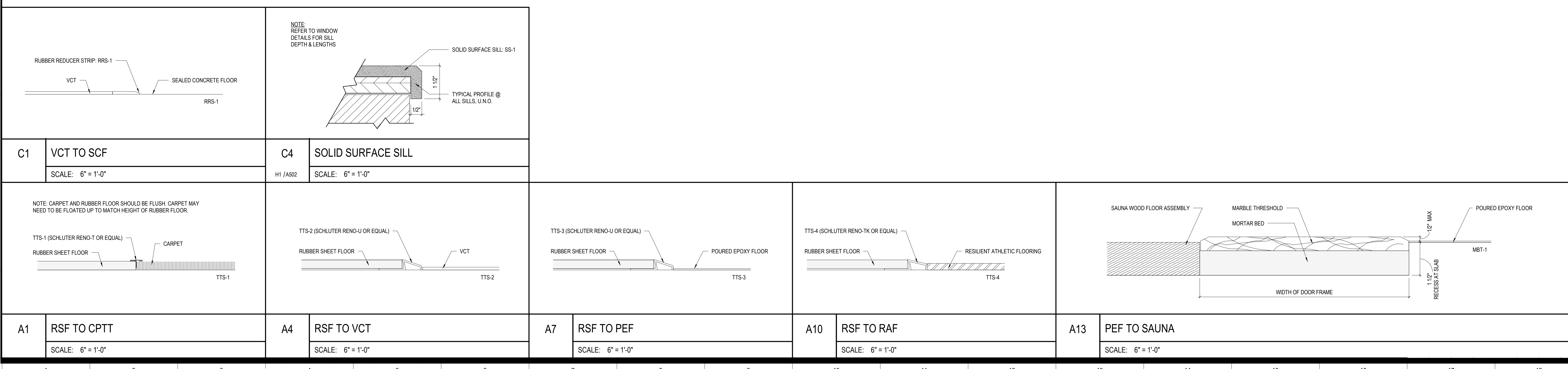
SHEET TITLE
**ENLARGED RESTROOM PLANS &
ELEVATIONS**

DRAWING NO.



CODE	FLOOR MATERIAL	FLOOR MANUFACTURER	SPYLE / PATTERN	COLOR	SIZE	FINISH NOTES	CONTACT	FLOOR PHONE
CPTT-1	CARPET TILE	SHAW CONTRACT	CREATE TILE ST140	COEXIST 38557	18" x 36"	ASHLAR INSTALLATION	CARMEN PRESTON	205.639.6138
PEF-1	POURED EPOXY FLOORING	SHERWIN WILLIAMS	REFER TO SPECIFICATIONS	CUSTOM BLEND		BEST ROOM AND LOCKER ROOM FLOOR	GARY SULLIVAN	205.705.0313
PEF-2	POURED EPOXY FLOORING	SHERWIN WILLIAMS	REFER TO SPECIFICATIONS	CUSTOM BLEND		SHOWER FLOOR	GARY SULLIVAN	205.705.0313
RAF-1	RESILIENT ATHLETIC FLOORING	GERFLOR	TARAFLEX SPORTS M PLUS DRYTEX	MAPLE			AL DAVIS	615.585.1810
RSF-1	RUBBER SHEET FLOORING	MONDO	RAMFLEX	G707 GREY	6' x 42'-7"	10MM THICK	DANNY BRUNO	704.408.9994
SCF	SEALED CONCRETE FLOOR	SEE SPECIFICATIONS						
VCT-1	VINYL COMPOSITE TILE	ARMSTRONG FLOORING	IMPERIAL TEXTURE STANDARD EXCELON	51875 MID GRAYED BLUE	12" x 12"		DARIN WEISEMILLER	404.596.0134
WOC-1	WALK-OFF CARPET	J+J FLOORING	INCOGNITO	ESPIONAGE 1838	24" x 24"		DEBBIE DEASON	205.500.9221
CRB-1	CONTOURED RUBBER BASE	JOHNSONITE	MANDALAY	63 BURNT UMBER	6" HIGH			
PTB-1	PORCELAIN TILE BASE	CONCEPT SURFACES	HAYES SERIES AT3410	TENDER GRAY BRIGHT U761	4" x 6"		DON TEJELO	504.258.9944
RB-1	RUBBER BASE	JOHNSONITE	BASEWORKS THERMOSET RUBBER	63 BURNT UMBER	4" HIGH			
HPC-1	HIGH PERFORMANCE COATING	SHERWIN WILLIAMS		SW7007 CEILING BRIGHT WHITE		STRUCTURAL ELEMENTS	GARY SULLIVAN	205.705.0313
P-1	PAINT	SHERWIN WILLIAMS		SW7007 CEILING BRIGHT WHITE		FLAT FINISH, CEILINGS AND SOFFITS	GARY SULLIVAN	205.705.0313
P-2	PAINT	SHERWIN WILLIAMS		SW7069 IRON ORE		SEMI-GLOSS FINISH, DOOR FRAMES	GARY SULLIVAN	205.705.0313
P-3	PAINT	SHERWIN WILLIAMS		SW7014 EIDER WHITE		EGGSHELL FINISH, RESTROOM AND LOCKER ROOM	GARY SULLIVAN	205.705.0313
P-4	PAINT	SHERWIN WILLIAMS		SW7015 REPOSE GRAY		EGGSHELL FINISH, TYPICAL WALL	GARY SULLIVAN	205.705.0313
P-5	PAINT	SHERWIN WILLIAMS		SW7017 DORIAN GRAY		EGGSHELL FINISH, FITNESS ROOMS	GARY SULLIVAN	205.705.0313
P-6	PAINT	SHERWIN WILLIAMS		SW9136 LULLABY		EGGSHELL FINISH	GARY SULLIVAN	205.705.0313
P-7	PAINT	SHERWIN WILLIAMS		SW9138 STARDEW		EGGSHELL FINISH	GARY SULLIVAN	205.705.0313
P-8	PAINT	SHERWIN WILLIAMS		SW9141 WATERLOO		EGGSHELL FINISH	GARY SULLIVAN	205.705.0313
PWP-1	PLASTIC WALL PANEL	CONSTRUCTION SPECIALTIES, ACROVYN	4000 SUEDE TEXTURE	OZARK #314	SEE ELEVS: 48" HEIGHT TYP, UNO	ALTERNATE #2		
PWT-1	PORCELAIN WALL TILE	CONCEPT SURFACES	NIMBUS	STUDIO BLU PSUR01	10" x 30"	STANDARD TILE	DON TEJELO	504.258.9944
PWT-2	PORCELAIN WALL TILE	CONCEPT SURFACES	NIMBUS	STUDIO BLU PSUR03	10" x 30"	ACCENT TILE	DON TEJELO	504.258.9944
A1	ACOUSTICAL LAY-IN CEILING	ARMSTRONG	DUNE	WHITE	24" x 24"	ANGLED TEGULAR EDGE TILE IN 15/16" GRID	RICH LAWS	205.410.2765
A2	ACOUSTICAL LAY-IN CEILING (VINYL FACED)	ARMSTRONG	CERAMAGUARD	WHITE	24" x 24"	SQUARE EDGE TILE IN 15/16" GRID	RICH LAWS	205.410.2765
B1	GYPSON BOARD	SEE SPECIFICATIONS		PAINTED P-1				
B2	MOISTURE RESISTANT GYP BOARD	SEE SPECIFICATIONS		PAINTED P-1				
X1	EXPOSED CEILING: UNPAINTED							
X2	EXPOSED CEILING: PAINTED							
AWP-1	ACOUSTICAL WALL PANEL	TECTUM INC.	TECTUM DIRECT-ATTACH WALLS	P-6	23 3/4" x 96"	ALTERNATE #1		
AWP-2	ACOUSTICAL WALL PANEL	TECTUM INC.	TECTUM DIRECT-ATTACH WALLS	P-7	23 3/4" x 96"	ALTERNATE #1		
AWP-3	ACOUSTICAL WALL PANEL	TECTUM INC.	TECTUM DIRECT-ATTACH WALLS	P-8	23 3/4" x 96"	ALTERNATE #1		
PC	PLASTIC CUBBIES	SCRANTON PRODUCTS	TUFFTEC	GREY		ORANGE PEEL TEXTURE		
PL	PLASTIC LOCKERS	SCRANTON PRODUCTS	TUFFTEC	GREY		ORANGE PEEL TEXTURE		
SH	ROLLER SHADE - MOTORIZED	DRAPER	MOTORIZED FLEXSHADE	TBD		COLOR TBD PER MANUFACTURER STANDARDS		
SPTP	SOLID PLASTIC TOILET PARTITION	SCRANTON PRODUCTS	HINY HIDERS - HDPE	STAINLESS		HAMMERED TEXTURE		
SPUS	SOLID PLASTIC URINAL SCREEN	SCRANTON PRODUCTS	HINY HIDERS - HDPE	STAINLESS		HAMMERED TEXTURE		
SSC	STAINED AND SEALED CONCRETE	SEE SPECIFICATIONS		SEE SPECIFICATIONS				
PL-1	PLASTIC LAMINATE	FORMICA		COGNAC MAPLE 7738-58		MATTE FINISH	NAN JONES	205.305.2916
PL-2	PLASTIC LAMINATE	FORMICA		LAYERED SAND		SCOVATO	NAN JONES	205.305.2916
QS-1	QUARTZ SURFACING	CAMBRIA		ELLA		POLISHED FINISH	KIT WEBB	
SS-1	SOLID SURFACE	CORIAN		CIRRUS WHITE				

CODE	MATERIAL	MANUFACTURER	FINISH	CONTACT	PHONE
AWP-1	ACOUSTICAL WALL PANEL	TECTUM INC.	TECTUM DIRECT-ATTACH WALLS	P-6	23 3/4" x 96"
AWP-2	ACOUSTICAL WALL PANEL	TECTUM INC.	TECTUM DIRECT-ATTACH WALLS	P-7	23 3/4" x 96"
AWP-3	ACOUSTICAL WALL PANEL	TECTUM INC.	TECTUM DIRECT-ATTACH WALLS	P-8	23 3/4" x 96"
PC	PLASTIC CUBBIES	SCRANTON PRODUCTS	TUFFTEC	GREY	
PL	PLASTIC LOCKERS	SCRANTON PRODUCTS	TUFFTEC	GREY	
SH	ROLLER SHADE - MOTORIZED	DRAPER	MOTORIZED FLEXSHADE	TBD	
SPTP	SOLID PLASTIC TOILET PARTITION	SCRANTON PRODUCTS	HINY HIDERS - HDPE	STAINLESS	
SPUS	SOLID PLASTIC URINAL SCREEN	SCRANTON PRODUCTS	HINY HIDERS - HDPE	STAINLESS	
SSC	STAINED AND SEALED CONCRETE	SEE SPECIFICATIONS		SEE SPECIFICATIONS	
PL-1	PLASTIC LAMINATE	FORMICA		COGNAC MAPLE 7738-58	
PL-2	PLASTIC LAMINATE	FORMICA		LAYERED SAND	
QS-1	QUARTZ SURFACING	CAMBRIA		ELLA	
SS-1	SOLID SURFACE	CORIAN		CIRRUS WHITE	



**ORANGE BEACH RECREATION
COMPLEX NEW ADULT
FITNESS CENTER**



CITY OF ORANGE BEACH ;
ORANGE BEACH, AL

DAVIS

OWNER
CITY OF ORANGE BEACH
PO BOX 458
ORANGE BEACH, ALABAMA 36561
251-981-6979
ATTN: KEN GRIMES, JR.

ASSOCIATE ARCHITECT
MCCOLLOUGH ARCHITECTURE
4790 MAIN ST #209
ORANGE BEACH, AL 36561
251-988-7222
ATTN: STED MCCOLLOUGH

ARCHITECT
DAVIS ARCHITECTS, INC.
133 29RD STREET SOUTH
BIRMINGHAM, AL 35233
205-322-7482
ATTN: JIM HARTSELL / JEFFREY MENASCO

CIVIL ENGINEER
SAWGRASS CONSULTING, LLC
1145 OLD HIGHWAY 31
SPANISH FORT, AL 36527
251-544-7900
ATTN: ERIC E. GODWIN / DOUG CHAFFIN

STRUCTURAL ENGINEER
MBA ENGINEERS
300 20TH ST, N, SUITE 100
BIRMINGHAM, AL 35203
205-323-6386
ATTN: KEITH OWENS / MARK BOGER

MECHANICAL / PLUMBING ENGINEER
GULF STATES ENGINEERING
600 AZALEA ROAD
MOBILE, AL 36609
251-460-4646
ATTN: CHRIS DEARMON / VAN SIMPSON

FIRE PROTECTION ENGINEER
GULF STATES ENGINEERING
600 AZALEA ROAD
MOBILE, AL 36609
251-460-4646
ATTN: TOM WADE / BRIAN DOVE

ELECTRICAL ENGINEER
GULF STATES ENGINEERING
600 AZALEA ROAD
MOBILE, AL 36609
251-460-4646
ATTN: JERRY ONWU / SID SNYDER

REV	DATE	DESCRIPTION
1	03/04/2020	ADDENDUM 1

DATE: 2-14-2020
PROJECT NO: 3891.02
SHEET NO: 100% BID DOCUMENTS
ADDENDUM 1

FINISH LEGEND

DRAWING NO.

A910