

REPLACE ROOFTOP HVAC UNITS

ADULT DETENTION CENTER

FRANKLIN COUNTY
UNION, MISSOURI

ROOF PROTECTION NOTES

1. THE CONTRACTOR SHALL NOTIFY THE OWNER'S REPRESENTATIVE A MINIMUM OF SEVEN (7) DAYS BEFORE THE BEGINNING OF WORK THAT INVOLVES ACTIVITY ON THE ROOF.
2. MATERIALS OVER THE EXISTING ROOF SURFACES SHALL BE KEPT TO AN EXISTING MINIMUM.
3. THE CONTRACTOR AND THE OWNER'S REPRESENTATIVE SHALL INSPECT THE EXISTING ROOF BEFORE THE START OF CONSTRUCTION. THE PROTECTION SYSTEM SHALL BE DOCUMENTED BY WRITING AND/OR PHOTOGRAPHS.
4. THE CONTRACTOR SHALL PLACE MINIMUM 1" OR 1/2" THICK (WHICHEVER IS GREATER) PROTECTION BOARD OVER ALL INSULATED ROOFING THAT WILL HAVE CONSTRUCTION TRAFFIC. THIS ROOF PROTECTION SHALL BE PROVIDED FOR THE ENTIRE AREA TO BE PROTECTED. THE PROTECTION SHALL ALSO BE PROVIDED FOR THE ACCESS FROM THE ROOF ACCESS DOOR TO THE PROTECTED CONSTRUCTION AREA.
5. STORAGE OF MATERIALS ON EXISTING ROOF WILL NOT BE ALLOWED.
6. THE CONTRACTOR SHALL REMOVE DAILY ALL PROJECT DEBRIS FROM ALL ROOFING SURFACES.
7. THE CONTRACTOR SHALL ADVISE THE OWNER'S REPRESENTATIVE WHEN WORK ON THE ROOF IS COMPLETE AND THE PROTECTION BOARDS HAVE BEEN REMOVED. THE CONTRACTOR AND THE OWNER'S REPRESENTATIVE SHALL EXAMINE ALL ROOF SURFACES WHERE WORK HAS OCCURRED AND WILL REPORT ALL DEFECTS NOT PREVIOUSLY DOCUMENTED.
8. CONTRACTOR SHALL BE RESPONSIBLE FOR ANY DAMAGE TO THE BUILDING, ROOF, STRUCTURAL FRAMING, ETC. INCURRED DURING CONSTRUCTION.
9. CONTRACTOR SHALL UTILIZE A LICENSED APPLICATION OF THE EXISTING ROOFING SYSTEM TO REPAIR ANY AND ALL DAMAGE INCURRED DURING THE COURSE OF CONSTRUCTION.

INDEX OF DRAWINGS

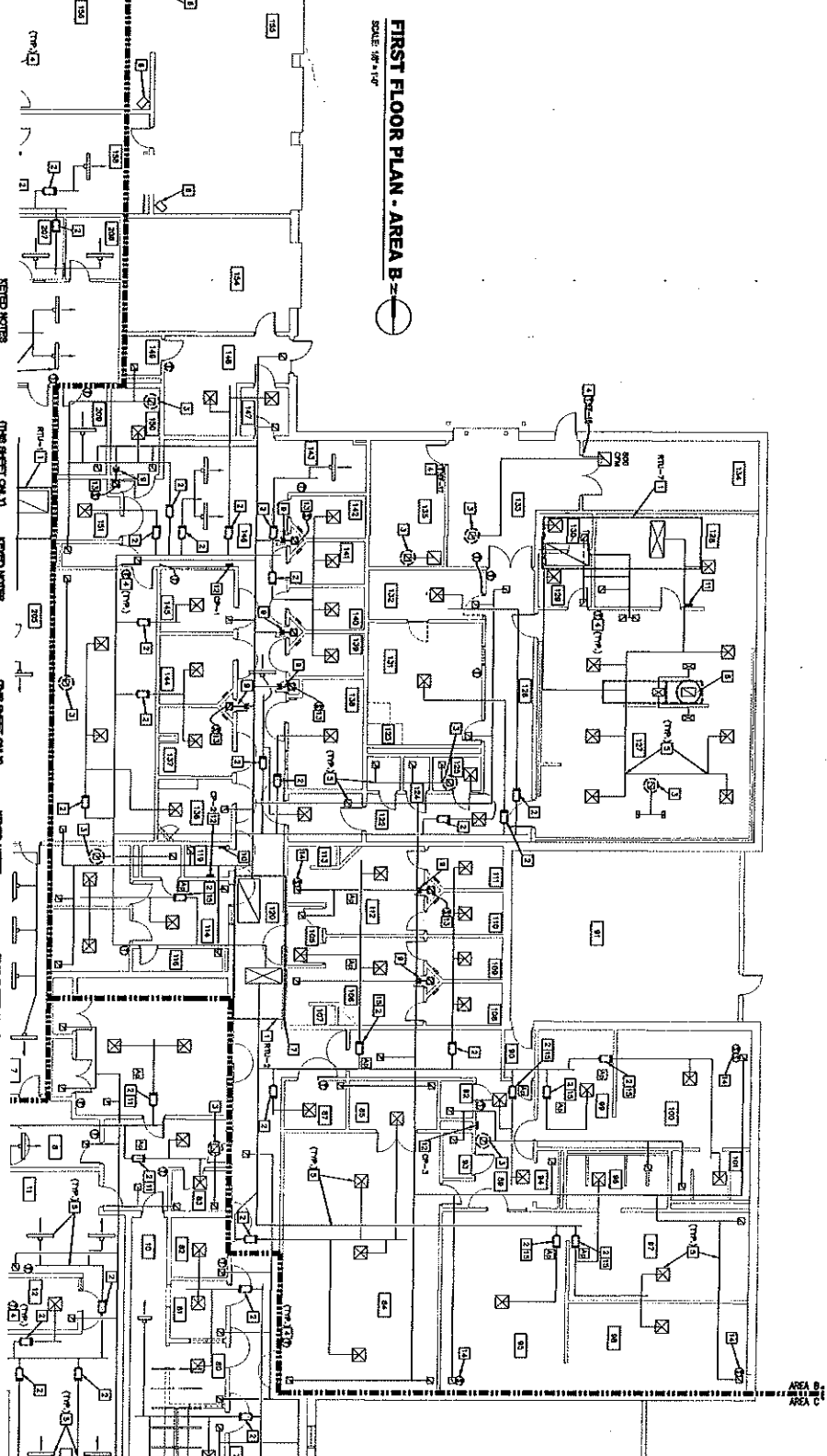
Q1	COVER SHEET
DM10	FIRST FLOOR PLANS - AREA A - DEMOLITION
DM11	FIRST FLOOR PLANS - AREA B - DEMOLITION
DM12	FIRST FLOOR PLANS - AREA C - DEMOLITION
DM20	SECOND FLOOR PLANS - DEMOLITION
MI0	FIRST FLOOR PLANS - AREA A - NEW WORK
MI1	FIRST FLOOR PLANS - AREA B - NEW WORK
MI2	FIRST FLOOR PLANS - AREA C - NEW WORK
M20	SECOND FLOOR PLANS - NEW WORK
M21	SITE/ROOF PLANS - NEW WORK
M30	SCHEDULES, NOTES + DETAILS
M31	SCHEDULES, NOTES + DETAILS

BRIC
PARTNERSHIP, LLC
CONSULTING ENGINEERS

1500 WEST 10TH AVENUE, SUITE 200
DENVER, CO 80202
TEL: 303.755.8777
WWW.BRICENGINEERS.COM

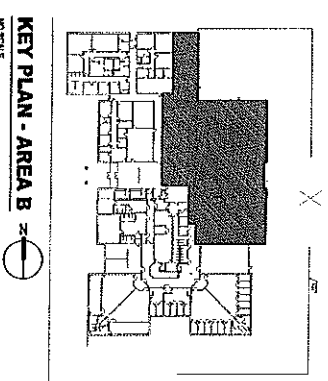
APPROVED BY:	REVISIONS:	BRIC PARTNERSHIP, LLC CONSULTING ENGINEERS	REPLACE ROOFTOP HVAC UNITS ADULT DETENTION CENTER FRANKLIN COUNTY UNION, MISSOURI
DATE: 04/17/08	REVISIONS:		
RECORD DRAWING:	REVISIONS:	BRIC PARTNERSHIP, LLC CONSULTING ENGINEERS	REPLACE ROOFTOP HVAC UNITS ADULT DETENTION CENTER FRANKLIN COUNTY UNION, MISSOURI
DATE: 01/21/11	REVISIONS:		
MECHANICAL COVER SHEET	REVISIONS:	BRIC PARTNERSHIP, LLC CONSULTING ENGINEERS	REPLACE ROOFTOP HVAC UNITS ADULT DETENTION CENTER FRANKLIN COUNTY UNION, MISSOURI
DATE: 04/17/08	REVISIONS:		
COVER SHEET	REVISIONS:	BRIC PARTNERSHIP, LLC CONSULTING ENGINEERS	REPLACE ROOFTOP HVAC UNITS ADULT DETENTION CENTER FRANKLIN COUNTY UNION, MISSOURI
DATE: 01/21/11	REVISIONS:		
G.1	REVISIONS:	BRIC PARTNERSHIP, LLC CONSULTING ENGINEERS	REPLACE ROOFTOP HVAC UNITS ADULT DETENTION CENTER FRANKLIN COUNTY UNION, MISSOURI
DATE: 04/17/08	REVISIONS:		

ROOM NO.	ROOM NAME	NO.	REVISIONS
101	RECEPTION	1	ADD
102	OFFICE	1	ADD
103	OFFICE	1	ADD
104	OFFICE	1	ADD
105	OFFICE	1	ADD
106	OFFICE	1	ADD
107	OFFICE	1	ADD
108	OFFICE	1	ADD
109	OFFICE	1	ADD
110	OFFICE	1	ADD
111	OFFICE	1	ADD
112	OFFICE	1	ADD
113	OFFICE	1	ADD
114	OFFICE	1	ADD
115	OFFICE	1	ADD
116	OFFICE	1	ADD
117	OFFICE	1	ADD
118	OFFICE	1	ADD
119	OFFICE	1	ADD
120	OFFICE	1	ADD
121	OFFICE	1	ADD
122	OFFICE	1	ADD
123	OFFICE	1	ADD
124	OFFICE	1	ADD
125	OFFICE	1	ADD
126	OFFICE	1	ADD
127	OFFICE	1	ADD
128	OFFICE	1	ADD
129	OFFICE	1	ADD
130	OFFICE	1	ADD
131	OFFICE	1	ADD
132	OFFICE	1	ADD
133	OFFICE	1	ADD
134	OFFICE	1	ADD
135	OFFICE	1	ADD
136	OFFICE	1	ADD
137	OFFICE	1	ADD
138	OFFICE	1	ADD
139	OFFICE	1	ADD
140	OFFICE	1	ADD
141	OFFICE	1	ADD
142	OFFICE	1	ADD
143	OFFICE	1	ADD
144	OFFICE	1	ADD
145	OFFICE	1	ADD
146	OFFICE	1	ADD
147	OFFICE	1	ADD
148	OFFICE	1	ADD
149	OFFICE	1	ADD
150	OFFICE	1	ADD
151	OFFICE	1	ADD
152	OFFICE	1	ADD
153	OFFICE	1	ADD
154	OFFICE	1	ADD
155	OFFICE	1	ADD
156	OFFICE	1	ADD
157	OFFICE	1	ADD
158	OFFICE	1	ADD
159	OFFICE	1	ADD
160	OFFICE	1	ADD
161	OFFICE	1	ADD
162	OFFICE	1	ADD
163	OFFICE	1	ADD
164	OFFICE	1	ADD
165	OFFICE	1	ADD
166	OFFICE	1	ADD
167	OFFICE	1	ADD
168	OFFICE	1	ADD
169	OFFICE	1	ADD
170	OFFICE	1	ADD
171	OFFICE	1	ADD
172	OFFICE	1	ADD
173	OFFICE	1	ADD
174	OFFICE	1	ADD
175	OFFICE	1	ADD
176	OFFICE	1	ADD
177	OFFICE	1	ADD
178	OFFICE	1	ADD
179	OFFICE	1	ADD
180	OFFICE	1	ADD
181	OFFICE	1	ADD
182	OFFICE	1	ADD
183	OFFICE	1	ADD
184	OFFICE	1	ADD
185	OFFICE	1	ADD
186	OFFICE	1	ADD
187	OFFICE	1	ADD
188	OFFICE	1	ADD
189	OFFICE	1	ADD
190	OFFICE	1	ADD
191	OFFICE	1	ADD
192	OFFICE	1	ADD
193	OFFICE	1	ADD
194	OFFICE	1	ADD
195	OFFICE	1	ADD
196	OFFICE	1	ADD
197	OFFICE	1	ADD
198	OFFICE	1	ADD
199	OFFICE	1	ADD
200	OFFICE	1	ADD



FIRST FLOOR PLAN - AREA B
 SCALE: 1/8" = 1'-0"

- 1. CONNECTOR AND REMOVE EXISTING VAV MOTOR, W/IT IS REQUIRED. EXISTING MOTOR SHALL BE REMOVED AND ASSOCIATED WIRING SHALL BE RELOCATED TO THE NEAREST AVAILABLE ELECTRICAL PANEL. SEE SHEET M-10 FOR WIRING SCHEDULE. THE EXISTING WIRING SHALL BE RELOCATED TO THE NEAREST AVAILABLE ELECTRICAL PANEL. SEE SHEET M-10 FOR WIRING SCHEDULE.
- 2. REMOVE AND REPAIR EXISTING VAV TERMINAL, AND ASSOCIATED WIRING. THE EXISTING WIRING SHALL BE RELOCATED TO THE NEAREST AVAILABLE ELECTRICAL PANEL. SEE SHEET M-10 FOR WIRING SCHEDULE.
- 3. REMOVE AND REPAIR EXISTING VAV MOTOR, W/IT IS REQUIRED. EXISTING MOTOR SHALL BE REMOVED AND ASSOCIATED WIRING SHALL BE RELOCATED TO THE NEAREST AVAILABLE ELECTRICAL PANEL. SEE SHEET M-10 FOR WIRING SCHEDULE.
- 4. REMOVE AND REPAIR EXISTING VAV TERMINAL, AND ASSOCIATED WIRING. THE EXISTING WIRING SHALL BE RELOCATED TO THE NEAREST AVAILABLE ELECTRICAL PANEL. SEE SHEET M-10 FOR WIRING SCHEDULE.
- 5. REMOVE AND REPAIR EXISTING VAV MOTOR, W/IT IS REQUIRED. EXISTING MOTOR SHALL BE REMOVED AND ASSOCIATED WIRING SHALL BE RELOCATED TO THE NEAREST AVAILABLE ELECTRICAL PANEL. SEE SHEET M-10 FOR WIRING SCHEDULE.
- 6. REMOVE AND REPAIR EXISTING VAV TERMINAL, AND ASSOCIATED WIRING. THE EXISTING WIRING SHALL BE RELOCATED TO THE NEAREST AVAILABLE ELECTRICAL PANEL. SEE SHEET M-10 FOR WIRING SCHEDULE.
- 7. REMOVE AND REPAIR EXISTING VAV MOTOR, W/IT IS REQUIRED. EXISTING MOTOR SHALL BE REMOVED AND ASSOCIATED WIRING SHALL BE RELOCATED TO THE NEAREST AVAILABLE ELECTRICAL PANEL. SEE SHEET M-10 FOR WIRING SCHEDULE.
- 8. REMOVE AND REPAIR EXISTING VAV TERMINAL, AND ASSOCIATED WIRING. THE EXISTING WIRING SHALL BE RELOCATED TO THE NEAREST AVAILABLE ELECTRICAL PANEL. SEE SHEET M-10 FOR WIRING SCHEDULE.
- 9. REMOVE AND REPAIR EXISTING VAV MOTOR, W/IT IS REQUIRED. EXISTING MOTOR SHALL BE REMOVED AND ASSOCIATED WIRING SHALL BE RELOCATED TO THE NEAREST AVAILABLE ELECTRICAL PANEL. SEE SHEET M-10 FOR WIRING SCHEDULE.
- 10. REMOVE AND REPAIR EXISTING VAV TERMINAL, AND ASSOCIATED WIRING. THE EXISTING WIRING SHALL BE RELOCATED TO THE NEAREST AVAILABLE ELECTRICAL PANEL. SEE SHEET M-10 FOR WIRING SCHEDULE.
- 11. REMOVE AND REPAIR EXISTING VAV MOTOR, W/IT IS REQUIRED. EXISTING MOTOR SHALL BE REMOVED AND ASSOCIATED WIRING SHALL BE RELOCATED TO THE NEAREST AVAILABLE ELECTRICAL PANEL. SEE SHEET M-10 FOR WIRING SCHEDULE.
- 12. REMOVE AND REPAIR EXISTING VAV TERMINAL, AND ASSOCIATED WIRING. THE EXISTING WIRING SHALL BE RELOCATED TO THE NEAREST AVAILABLE ELECTRICAL PANEL. SEE SHEET M-10 FOR WIRING SCHEDULE.
- 13. REMOVE AND REPAIR EXISTING VAV MOTOR, W/IT IS REQUIRED. EXISTING MOTOR SHALL BE REMOVED AND ASSOCIATED WIRING SHALL BE RELOCATED TO THE NEAREST AVAILABLE ELECTRICAL PANEL. SEE SHEET M-10 FOR WIRING SCHEDULE.
- 14. REMOVE AND REPAIR EXISTING VAV TERMINAL, AND ASSOCIATED WIRING. THE EXISTING WIRING SHALL BE RELOCATED TO THE NEAREST AVAILABLE ELECTRICAL PANEL. SEE SHEET M-10 FOR WIRING SCHEDULE.
- 15. REMOVE AND REPAIR EXISTING VAV MOTOR, W/IT IS REQUIRED. EXISTING MOTOR SHALL BE REMOVED AND ASSOCIATED WIRING SHALL BE RELOCATED TO THE NEAREST AVAILABLE ELECTRICAL PANEL. SEE SHEET M-10 FOR WIRING SCHEDULE.
- 16. REMOVE AND REPAIR EXISTING VAV TERMINAL, AND ASSOCIATED WIRING. THE EXISTING WIRING SHALL BE RELOCATED TO THE NEAREST AVAILABLE ELECTRICAL PANEL. SEE SHEET M-10 FOR WIRING SCHEDULE.
- 17. REMOVE AND REPAIR EXISTING VAV MOTOR, W/IT IS REQUIRED. EXISTING MOTOR SHALL BE REMOVED AND ASSOCIATED WIRING SHALL BE RELOCATED TO THE NEAREST AVAILABLE ELECTRICAL PANEL. SEE SHEET M-10 FOR WIRING SCHEDULE.
- 18. REMOVE AND REPAIR EXISTING VAV TERMINAL, AND ASSOCIATED WIRING. THE EXISTING WIRING SHALL BE RELOCATED TO THE NEAREST AVAILABLE ELECTRICAL PANEL. SEE SHEET M-10 FOR WIRING SCHEDULE.
- 19. REMOVE AND REPAIR EXISTING VAV MOTOR, W/IT IS REQUIRED. EXISTING MOTOR SHALL BE REMOVED AND ASSOCIATED WIRING SHALL BE RELOCATED TO THE NEAREST AVAILABLE ELECTRICAL PANEL. SEE SHEET M-10 FOR WIRING SCHEDULE.
- 20. REMOVE AND REPAIR EXISTING VAV TERMINAL, AND ASSOCIATED WIRING. THE EXISTING WIRING SHALL BE RELOCATED TO THE NEAREST AVAILABLE ELECTRICAL PANEL. SEE SHEET M-10 FOR WIRING SCHEDULE.



KEY PLAN - AREA B
 NO SCALE

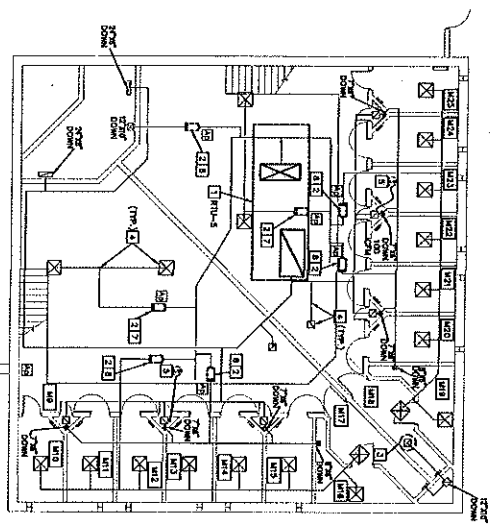
DATE: 04/17/08	PROJECT: MECHANICAL DEMO PLANS
REVISIONS:	
NO. 1	DATE: 04/17/08
NO. 2	DATE: 04/17/08
NO. 3	DATE: 04/17/08
NO. 4	DATE: 04/17/08
NO. 5	DATE: 04/17/08
NO. 6	DATE: 04/17/08
NO. 7	DATE: 04/17/08
NO. 8	DATE: 04/17/08
NO. 9	DATE: 04/17/08
NO. 10	DATE: 04/17/08

BRIC
 PARTNERSHIP, LLC
 CONSULTING ENGINEERS

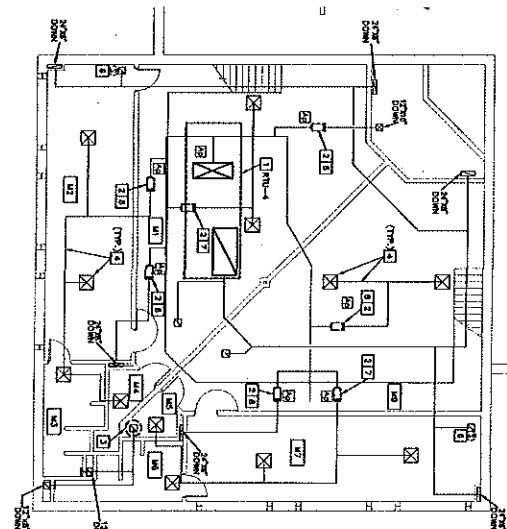
APPROVED BY: _____
 REPLACE ROOFTOP HVAC UNITS
 ADULT DETENTION CENTER
 FRANKLIN COUNTY
 UNION, MISSOURI

ROOM SCHEDULES

101	RECEPTION
102	OFFICE
103	OFFICE
104	OFFICE
105	OFFICE
106	OFFICE
107	OFFICE
108	OFFICE
109	OFFICE
110	OFFICE
111	OFFICE
112	OFFICE
113	OFFICE
114	OFFICE
115	OFFICE
116	OFFICE
117	OFFICE
118	OFFICE
119	OFFICE
120	OFFICE
121	OFFICE
122	OFFICE
123	OFFICE
124	OFFICE
125	OFFICE
126	OFFICE
127	OFFICE
128	OFFICE
129	OFFICE
130	OFFICE
131	OFFICE
132	OFFICE
133	OFFICE
134	OFFICE
135	OFFICE
136	OFFICE
137	OFFICE
138	OFFICE
139	OFFICE
140	OFFICE
141	OFFICE
142	OFFICE
143	OFFICE
144	OFFICE
145	OFFICE
146	OFFICE
147	OFFICE
148	OFFICE
149	OFFICE
150	OFFICE
151	OFFICE
152	OFFICE
153	OFFICE
154	OFFICE
155	OFFICE
156	OFFICE
157	OFFICE
158	OFFICE
159	OFFICE
160	OFFICE
161	OFFICE
162	OFFICE
163	OFFICE
164	OFFICE
165	OFFICE
166	OFFICE
167	OFFICE
168	OFFICE
169	OFFICE
170	OFFICE
171	OFFICE
172	OFFICE
173	OFFICE
174	OFFICE
175	OFFICE
176	OFFICE
177	OFFICE
178	OFFICE
179	OFFICE
180	OFFICE
181	OFFICE
182	OFFICE
183	OFFICE
184	OFFICE
185	OFFICE
186	OFFICE
187	OFFICE
188	OFFICE
189	OFFICE
190	OFFICE
191	OFFICE
192	OFFICE
193	OFFICE
194	OFFICE
195	OFFICE
196	OFFICE
197	OFFICE
198	OFFICE
199	OFFICE
200	OFFICE



SECOND FLOOR PLAN
 SCALE 1/8" = 1'-0"



- GENERAL NOTES**
1. RECONNECT AND REMOVE EXISTING VAV ROOFTOP UNIT (R) AS INDICATED ON CONTROL PANEL SCHEDULE. REMOVE AND RECONNECT EXISTING VAV ROOFTOP UNIT (R) TO NEW VAV ROOFTOP UNIT (R) AS INDICATED ON CONTROL PANEL SCHEDULE. REMOVE AND RECONNECT EXISTING VAV ROOFTOP UNIT (R) TO NEW VAV ROOFTOP UNIT (R) AS INDICATED ON CONTROL PANEL SCHEDULE. REMOVE AND RECONNECT EXISTING VAV ROOFTOP UNIT (R) TO NEW VAV ROOFTOP UNIT (R) AS INDICATED ON CONTROL PANEL SCHEDULE.
 2. RECONNECT AND REMOVE EXISTING VAV TERMINAL, AND CONNECT TO NEW VAV TERMINAL, AS INDICATED ON CONTROL PANEL SCHEDULE. REMOVE AND RECONNECT EXISTING VAV TERMINAL, AND CONNECT TO NEW VAV TERMINAL, AS INDICATED ON CONTROL PANEL SCHEDULE. REMOVE AND RECONNECT EXISTING VAV TERMINAL, AND CONNECT TO NEW VAV TERMINAL, AS INDICATED ON CONTROL PANEL SCHEDULE.
 3. RECONNECT AND REMOVE EXISTING ROOFTOP FAN, AND CONNECT TO NEW ROOFTOP FAN, AS INDICATED ON CONTROL PANEL SCHEDULE. REMOVE AND RECONNECT EXISTING ROOFTOP FAN, AND CONNECT TO NEW ROOFTOP FAN, AS INDICATED ON CONTROL PANEL SCHEDULE. REMOVE AND RECONNECT EXISTING ROOFTOP FAN, AND CONNECT TO NEW ROOFTOP FAN, AS INDICATED ON CONTROL PANEL SCHEDULE.
 4. RECONNECT AND REMOVE EXISTING VAV ROOFTOP UNIT (R) AS INDICATED ON CONTROL PANEL SCHEDULE. REMOVE AND RECONNECT EXISTING VAV ROOFTOP UNIT (R) TO NEW VAV ROOFTOP UNIT (R) AS INDICATED ON CONTROL PANEL SCHEDULE. REMOVE AND RECONNECT EXISTING VAV ROOFTOP UNIT (R) TO NEW VAV ROOFTOP UNIT (R) AS INDICATED ON CONTROL PANEL SCHEDULE.
 5. REMOVE AND RECONNECT EXISTING VAV ROOFTOP UNIT (R) TO NEW VAV ROOFTOP UNIT (R) AS INDICATED ON CONTROL PANEL SCHEDULE. REMOVE AND RECONNECT EXISTING VAV ROOFTOP UNIT (R) TO NEW VAV ROOFTOP UNIT (R) AS INDICATED ON CONTROL PANEL SCHEDULE. REMOVE AND RECONNECT EXISTING VAV ROOFTOP UNIT (R) TO NEW VAV ROOFTOP UNIT (R) AS INDICATED ON CONTROL PANEL SCHEDULE.

EXISTING CONTROL PANEL SCHEDULE

CONTROL PANEL NO.	ATDCK NUMBER	SERVICES	REMOVED	RELOCATED	CONTROL LOCATION
01	1157	TEMPERATURE SENSORS	REMOVED	RELOCATED	101
02	1158	TEMPERATURE SENSORS	REMOVED	RELOCATED	102
03	1159	TEMPERATURE SENSORS	REMOVED	RELOCATED	103
04	1160	TEMPERATURE SENSORS	REMOVED	RELOCATED	104
05	1161	TEMPERATURE SENSORS	REMOVED	RELOCATED	105
06	1162	TEMPERATURE SENSORS	REMOVED	RELOCATED	106
07	1163	TEMPERATURE SENSORS	REMOVED	RELOCATED	107
08	1164	TEMPERATURE SENSORS	REMOVED	RELOCATED	108
09	1165	TEMPERATURE SENSORS	REMOVED	RELOCATED	109
10	1166	TEMPERATURE SENSORS	REMOVED	RELOCATED	110
11	1167	TEMPERATURE SENSORS	REMOVED	RELOCATED	111
12	1168	TEMPERATURE SENSORS	REMOVED	RELOCATED	112
13	1169	TEMPERATURE SENSORS	REMOVED	RELOCATED	113
14	1170	TEMPERATURE SENSORS	REMOVED	RELOCATED	114
15	1171	TEMPERATURE SENSORS	REMOVED	RELOCATED	115
16	1172	TEMPERATURE SENSORS	REMOVED	RELOCATED	116
17	1173	TEMPERATURE SENSORS	REMOVED	RELOCATED	117
18	1174	TEMPERATURE SENSORS	REMOVED	RELOCATED	118
19	1175	TEMPERATURE SENSORS	REMOVED	RELOCATED	119
20	1176	TEMPERATURE SENSORS	REMOVED	RELOCATED	120
21	1177	TEMPERATURE SENSORS	REMOVED	RELOCATED	121
22	1178	TEMPERATURE SENSORS	REMOVED	RELOCATED	122
23	1179	TEMPERATURE SENSORS	REMOVED	RELOCATED	123
24	1180	TEMPERATURE SENSORS	REMOVED	RELOCATED	124
25	1181	TEMPERATURE SENSORS	REMOVED	RELOCATED	125
26	1182	TEMPERATURE SENSORS	REMOVED	RELOCATED	126
27	1183	TEMPERATURE SENSORS	REMOVED	RELOCATED	127
28	1184	TEMPERATURE SENSORS	REMOVED	RELOCATED	128
29	1185	TEMPERATURE SENSORS	REMOVED	RELOCATED	129
30	1186	TEMPERATURE SENSORS	REMOVED	RELOCATED	130
31	1187	TEMPERATURE SENSORS	REMOVED	RELOCATED	131
32	1188	TEMPERATURE SENSORS	REMOVED	RELOCATED	132
33	1189	TEMPERATURE SENSORS	REMOVED	RELOCATED	133
34	1190	TEMPERATURE SENSORS	REMOVED	RELOCATED	134
35	1191	TEMPERATURE SENSORS	REMOVED	RELOCATED	135
36	1192	TEMPERATURE SENSORS	REMOVED	RELOCATED	136
37	1193	TEMPERATURE SENSORS	REMOVED	RELOCATED	137
38	1194	TEMPERATURE SENSORS	REMOVED	RELOCATED	138
39	1195	TEMPERATURE SENSORS	REMOVED	RELOCATED	139
40	1196	TEMPERATURE SENSORS	REMOVED	RELOCATED	140
41	1197	TEMPERATURE SENSORS	REMOVED	RELOCATED	141
42	1198	TEMPERATURE SENSORS	REMOVED	RELOCATED	142
43	1199	TEMPERATURE SENSORS	REMOVED	RELOCATED	143
44	1200	TEMPERATURE SENSORS	REMOVED	RELOCATED	144
45	1201	TEMPERATURE SENSORS	REMOVED	RELOCATED	145
46	1202	TEMPERATURE SENSORS	REMOVED	RELOCATED	146
47	1203	TEMPERATURE SENSORS	REMOVED	RELOCATED	147
48	1204	TEMPERATURE SENSORS	REMOVED	RELOCATED	148
49	1205	TEMPERATURE SENSORS	REMOVED	RELOCATED	149
50	1206	TEMPERATURE SENSORS	REMOVED	RELOCATED	150

REPLACE ROOFTOP HVAC UNITS
 ADULT DETENTION CENTER
 FRANKLIN COUNTY
 UNION, MISSOURI

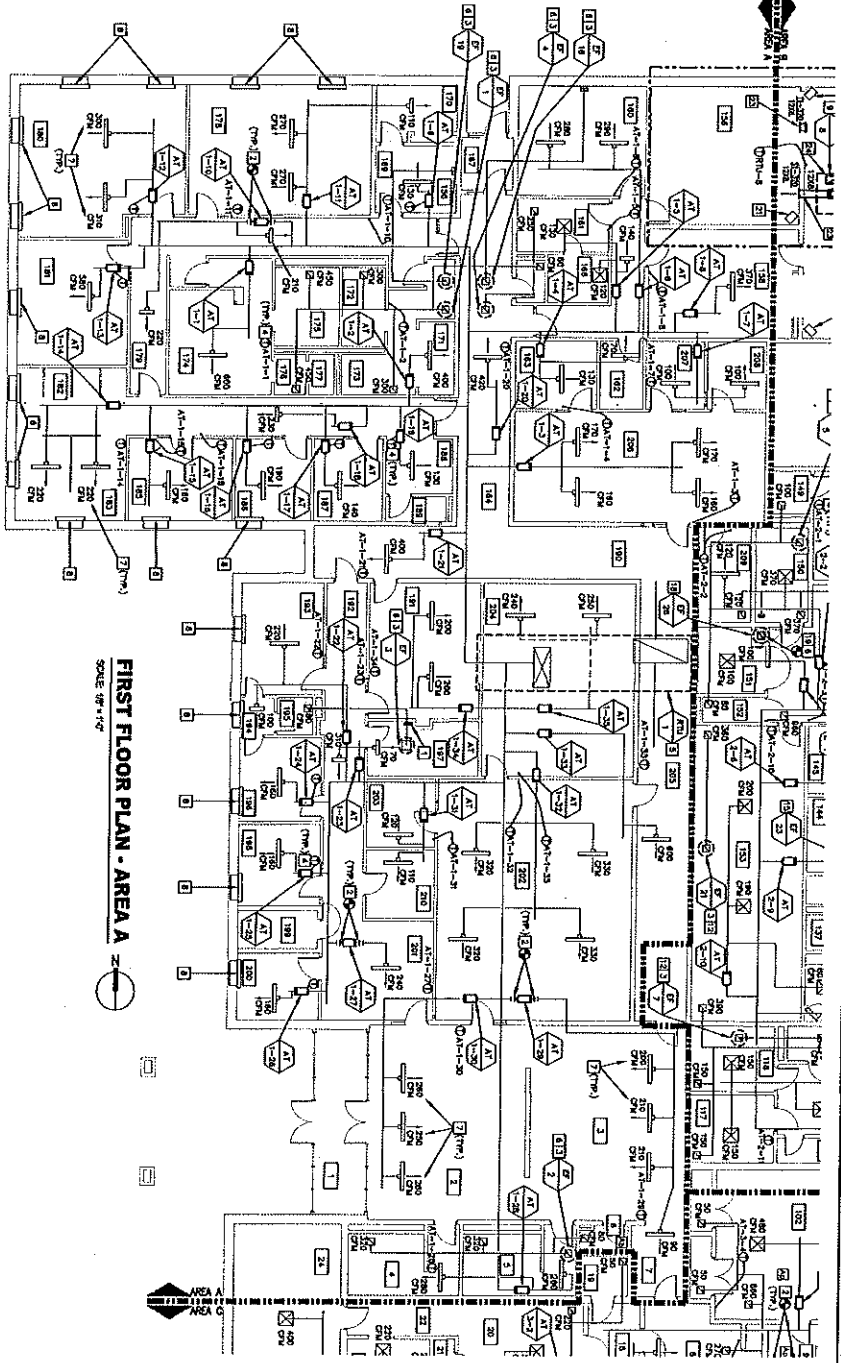
BRIC PARTNERSHIP, LLC CONSULTING ENGINEERS

APPROVED BY: _____

RECORD DRAWINGS
 DATE: 01/21/11
 Rtd. Date: 04/17/08
 MECHANICAL
 DEMO PLANS
 DM2.0

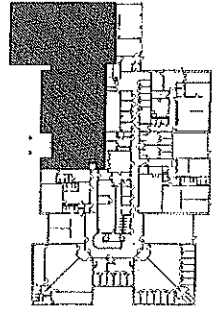
ROOM IDENTIFICATION SCHEDULE

ROOM NO.	ROOM NAME	ROOM NO.	ROOM NAME
101	RECEPTION	101	RECEPTION
102	OFFICE	102	OFFICE
103	CONFERENCE	103	CONFERENCE
104	TRAINING	104	TRAINING
105	RESTROOM	105	RESTROOM
106	STORAGE	106	STORAGE
107	MECHANICAL	107	MECHANICAL
108	UTILITY	108	UTILITY
109	LABORATORY	109	LABORATORY
110	OFFICE	110	OFFICE
111	CONFERENCE	111	CONFERENCE
112	TRAINING	112	TRAINING
113	RESTROOM	113	RESTROOM
114	STORAGE	114	STORAGE
115	MECHANICAL	115	MECHANICAL
116	UTILITY	116	UTILITY
117	LABORATORY	117	LABORATORY
118	OFFICE	118	OFFICE
119	CONFERENCE	119	CONFERENCE
120	TRAINING	120	TRAINING
121	RESTROOM	121	RESTROOM
122	STORAGE	122	STORAGE
123	MECHANICAL	123	MECHANICAL
124	UTILITY	124	UTILITY
125	LABORATORY	125	LABORATORY
126	OFFICE	126	OFFICE
127	CONFERENCE	127	CONFERENCE
128	TRAINING	128	TRAINING
129	RESTROOM	129	RESTROOM
130	STORAGE	130	STORAGE
131	MECHANICAL	131	MECHANICAL
132	UTILITY	132	UTILITY
133	LABORATORY	133	LABORATORY
134	OFFICE	134	OFFICE
135	CONFERENCE	135	CONFERENCE
136	TRAINING	136	TRAINING
137	RESTROOM	137	RESTROOM
138	STORAGE	138	STORAGE
139	MECHANICAL	139	MECHANICAL
140	UTILITY	140	UTILITY
141	LABORATORY	141	LABORATORY
142	OFFICE	142	OFFICE
143	CONFERENCE	143	CONFERENCE
144	TRAINING	144	TRAINING
145	RESTROOM	145	RESTROOM
146	STORAGE	146	STORAGE
147	MECHANICAL	147	MECHANICAL
148	UTILITY	148	UTILITY
149	LABORATORY	149	LABORATORY
150	OFFICE	150	OFFICE
151	CONFERENCE	151	CONFERENCE
152	TRAINING	152	TRAINING
153	RESTROOM	153	RESTROOM
154	STORAGE	154	STORAGE
155	MECHANICAL	155	MECHANICAL
156	UTILITY	156	UTILITY
157	LABORATORY	157	LABORATORY
158	OFFICE	158	OFFICE
159	CONFERENCE	159	CONFERENCE
160	TRAINING	160	TRAINING
161	RESTROOM	161	RESTROOM
162	STORAGE	162	STORAGE
163	MECHANICAL	163	MECHANICAL
164	UTILITY	164	UTILITY
165	LABORATORY	165	LABORATORY
166	OFFICE	166	OFFICE
167	CONFERENCE	167	CONFERENCE
168	TRAINING	168	TRAINING
169	RESTROOM	169	RESTROOM
170	STORAGE	170	STORAGE
171	MECHANICAL	171	MECHANICAL
172	UTILITY	172	UTILITY
173	LABORATORY	173	LABORATORY
174	OFFICE	174	OFFICE
175	CONFERENCE	175	CONFERENCE
176	TRAINING	176	TRAINING
177	RESTROOM	177	RESTROOM
178	STORAGE	178	STORAGE
179	MECHANICAL	179	MECHANICAL
180	UTILITY	180	UTILITY
181	LABORATORY	181	LABORATORY
182	OFFICE	182	OFFICE
183	CONFERENCE	183	CONFERENCE
184	TRAINING	184	TRAINING
185	RESTROOM	185	RESTROOM
186	STORAGE	186	STORAGE
187	MECHANICAL	187	MECHANICAL
188	UTILITY	188	UTILITY
189	LABORATORY	189	LABORATORY
190	OFFICE	190	OFFICE
191	CONFERENCE	191	CONFERENCE
192	TRAINING	192	TRAINING
193	RESTROOM	193	RESTROOM
194	STORAGE	194	STORAGE
195	MECHANICAL	195	MECHANICAL
196	UTILITY	196	UTILITY
197	LABORATORY	197	LABORATORY
198	OFFICE	198	OFFICE
199	CONFERENCE	199	CONFERENCE
200	TRAINING	200	TRAINING



FIRST FLOOR PLAN - AREA A
 SCALE: 1/8" = 1'-0"

KEY PLAN - AREA A
 NO SCALE



- NOTED NOTES:**
1. REMOVE EXISTING ROOF TOP HVAC UNITS AND RELOCATE TO NEW ROOF TOP UNITS AS SHOWN ON THIS PLAN. REMOVE EXISTING DUCTWORK AND RELOCATE TO NEW DUCTWORK AS SHOWN ON THIS PLAN.
 2. REMOVE EXISTING ROOF TOP UNITS AND RELOCATE TO NEW ROOF TOP UNITS AS SHOWN ON THIS PLAN. REMOVE EXISTING DUCTWORK AND RELOCATE TO NEW DUCTWORK AS SHOWN ON THIS PLAN.
 3. REMOVE EXISTING ROOF TOP UNITS AND RELOCATE TO NEW ROOF TOP UNITS AS SHOWN ON THIS PLAN. REMOVE EXISTING DUCTWORK AND RELOCATE TO NEW DUCTWORK AS SHOWN ON THIS PLAN.
 4. REMOVE EXISTING ROOF TOP UNITS AND RELOCATE TO NEW ROOF TOP UNITS AS SHOWN ON THIS PLAN. REMOVE EXISTING DUCTWORK AND RELOCATE TO NEW DUCTWORK AS SHOWN ON THIS PLAN.
 5. REMOVE EXISTING ROOF TOP UNITS AND RELOCATE TO NEW ROOF TOP UNITS AS SHOWN ON THIS PLAN. REMOVE EXISTING DUCTWORK AND RELOCATE TO NEW DUCTWORK AS SHOWN ON THIS PLAN.
 6. REMOVE EXISTING ROOF TOP UNITS AND RELOCATE TO NEW ROOF TOP UNITS AS SHOWN ON THIS PLAN. REMOVE EXISTING DUCTWORK AND RELOCATE TO NEW DUCTWORK AS SHOWN ON THIS PLAN.
 7. REMOVE EXISTING ROOF TOP UNITS AND RELOCATE TO NEW ROOF TOP UNITS AS SHOWN ON THIS PLAN. REMOVE EXISTING DUCTWORK AND RELOCATE TO NEW DUCTWORK AS SHOWN ON THIS PLAN.
 8. REMOVE EXISTING ROOF TOP UNITS AND RELOCATE TO NEW ROOF TOP UNITS AS SHOWN ON THIS PLAN. REMOVE EXISTING DUCTWORK AND RELOCATE TO NEW DUCTWORK AS SHOWN ON THIS PLAN.
 9. REMOVE EXISTING ROOF TOP UNITS AND RELOCATE TO NEW ROOF TOP UNITS AS SHOWN ON THIS PLAN. REMOVE EXISTING DUCTWORK AND RELOCATE TO NEW DUCTWORK AS SHOWN ON THIS PLAN.
 10. REMOVE EXISTING ROOF TOP UNITS AND RELOCATE TO NEW ROOF TOP UNITS AS SHOWN ON THIS PLAN. REMOVE EXISTING DUCTWORK AND RELOCATE TO NEW DUCTWORK AS SHOWN ON THIS PLAN.

BRIC PARTNERSHIP, LLC
 CONSULTING ENGINEERS

APPROVED BY: _____

DATE: 02/07/11

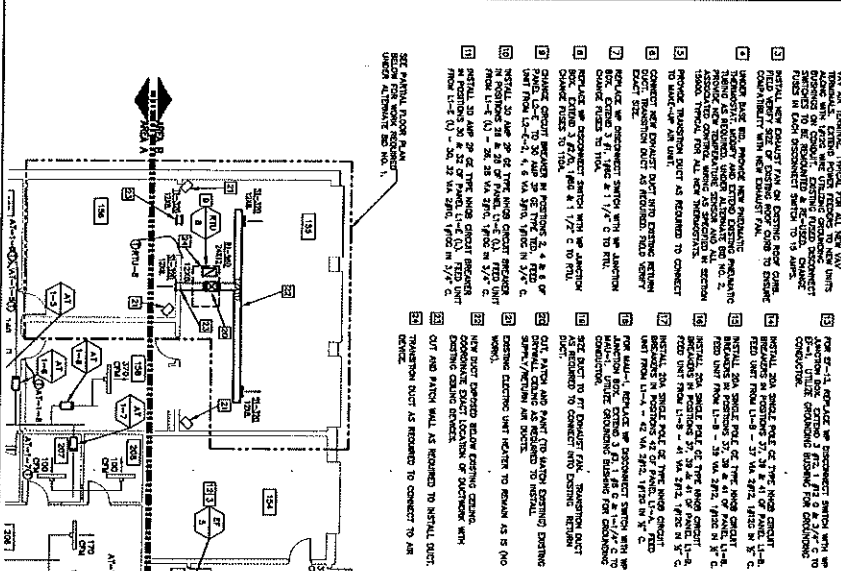
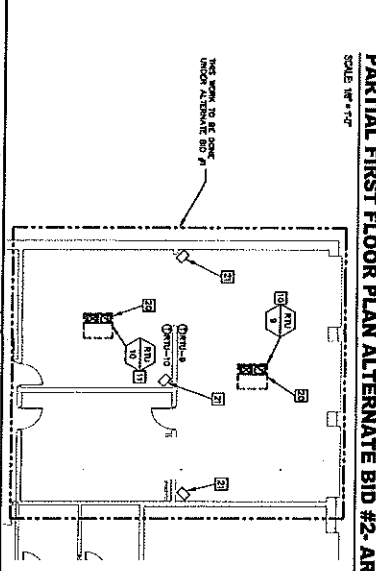
REVISIONS:

NO.	DATE	DESCRIPTION
1	02/07/11	ISSUE FOR PERMIT
2	02/07/11	ISSUE FOR PERMIT
3	02/07/11	ISSUE FOR PERMIT
4	02/07/11	ISSUE FOR PERMIT
5	02/07/11	ISSUE FOR PERMIT
6	02/07/11	ISSUE FOR PERMIT
7	02/07/11	ISSUE FOR PERMIT
8	02/07/11	ISSUE FOR PERMIT
9	02/07/11	ISSUE FOR PERMIT
10	02/07/11	ISSUE FOR PERMIT

MECHANICAL NEW WORK PLANS

M1.0

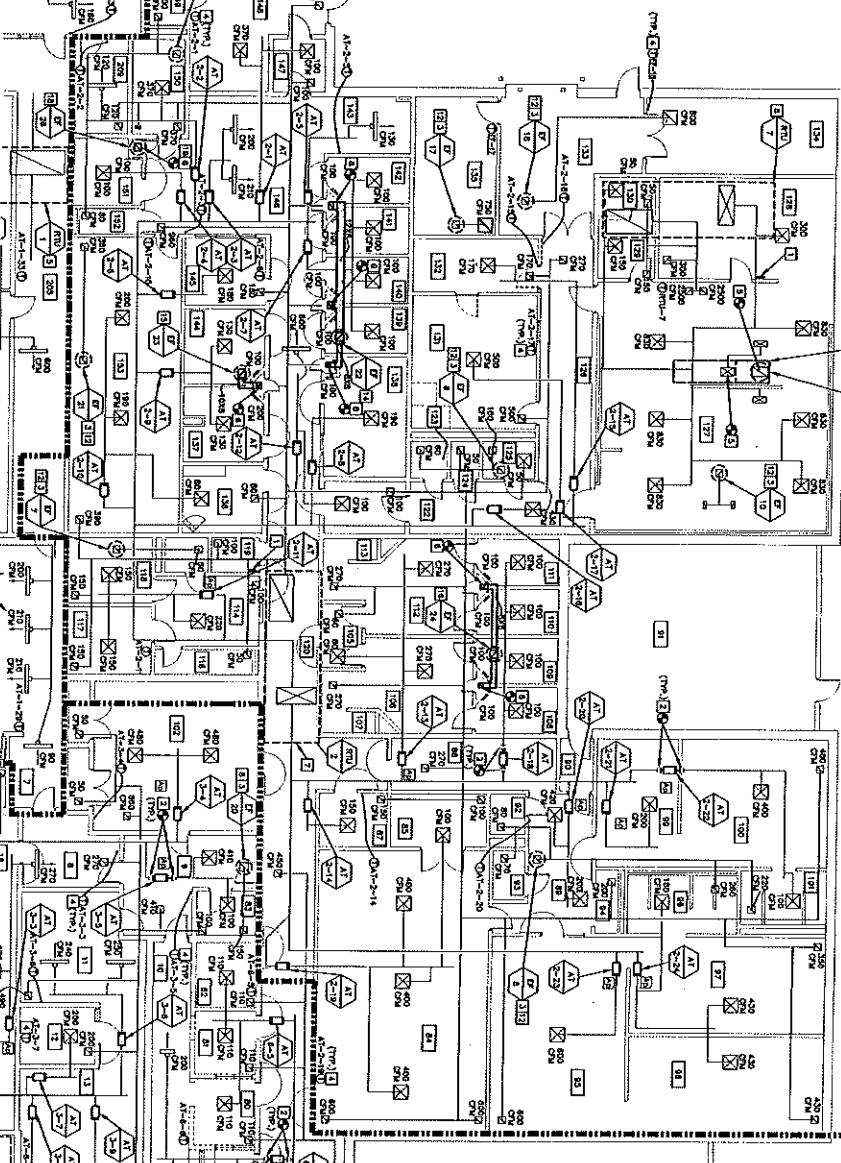
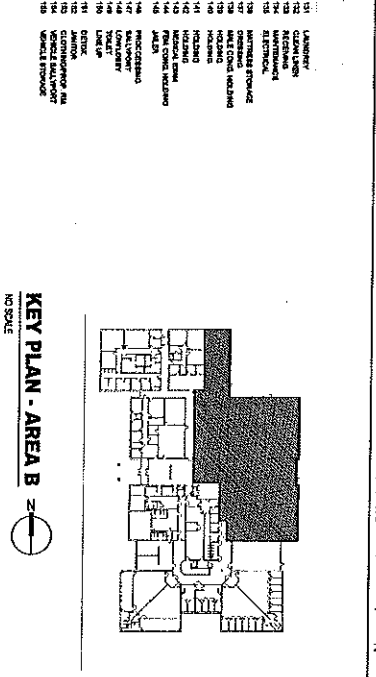
REPLACE ROOFTOP HVAC UNITS
 ADULT DETENTION CENTER
 FRANKLIN COUNTY
 UNION, MISSOURI



FIRST FLOOR PLAN - AREA B
 SCALE: 1/8" = 1'-0"

ROOM AND ROOM NAME

101	RECEPTION
102	RECEPTION
103	RECEPTION
104	RECEPTION
105	RECEPTION
106	RECEPTION
107	RECEPTION
108	RECEPTION
109	RECEPTION
110	RECEPTION
111	RECEPTION
112	RECEPTION
113	RECEPTION
114	RECEPTION
115	RECEPTION
116	RECEPTION
117	RECEPTION
118	RECEPTION
119	RECEPTION
120	RECEPTION
121	RECEPTION
122	RECEPTION
123	RECEPTION
124	RECEPTION
125	RECEPTION
126	RECEPTION
127	RECEPTION
128	RECEPTION
129	RECEPTION
130	RECEPTION
131	RECEPTION
132	RECEPTION
133	RECEPTION
134	RECEPTION
135	RECEPTION
136	RECEPTION
137	RECEPTION
138	RECEPTION
139	RECEPTION
140	RECEPTION
141	RECEPTION
142	RECEPTION
143	RECEPTION
144	RECEPTION
145	RECEPTION
146	RECEPTION
147	RECEPTION
148	RECEPTION
149	RECEPTION
150	RECEPTION
151	RECEPTION
152	RECEPTION
153	RECEPTION
154	RECEPTION
155	RECEPTION
156	RECEPTION
157	RECEPTION
158	RECEPTION
159	RECEPTION
160	RECEPTION
161	RECEPTION
162	RECEPTION
163	RECEPTION
164	RECEPTION
165	RECEPTION
166	RECEPTION
167	RECEPTION
168	RECEPTION
169	RECEPTION
170	RECEPTION
171	RECEPTION
172	RECEPTION
173	RECEPTION
174	RECEPTION
175	RECEPTION
176	RECEPTION
177	RECEPTION
178	RECEPTION
179	RECEPTION
180	RECEPTION
181	RECEPTION
182	RECEPTION
183	RECEPTION
184	RECEPTION
185	RECEPTION
186	RECEPTION
187	RECEPTION
188	RECEPTION
189	RECEPTION
190	RECEPTION
191	RECEPTION
192	RECEPTION
193	RECEPTION
194	RECEPTION
195	RECEPTION
196	RECEPTION
197	RECEPTION
198	RECEPTION
199	RECEPTION
200	RECEPTION



REPLACE ROOFTOP HVAC UNITS
 ADULT DETENTION CENTER
 FRANKLIN COUNTY
 UNION, MISSOURI

BRIC
 PARTNERSHIP, LLC
 CONSULTING ENGINEERS

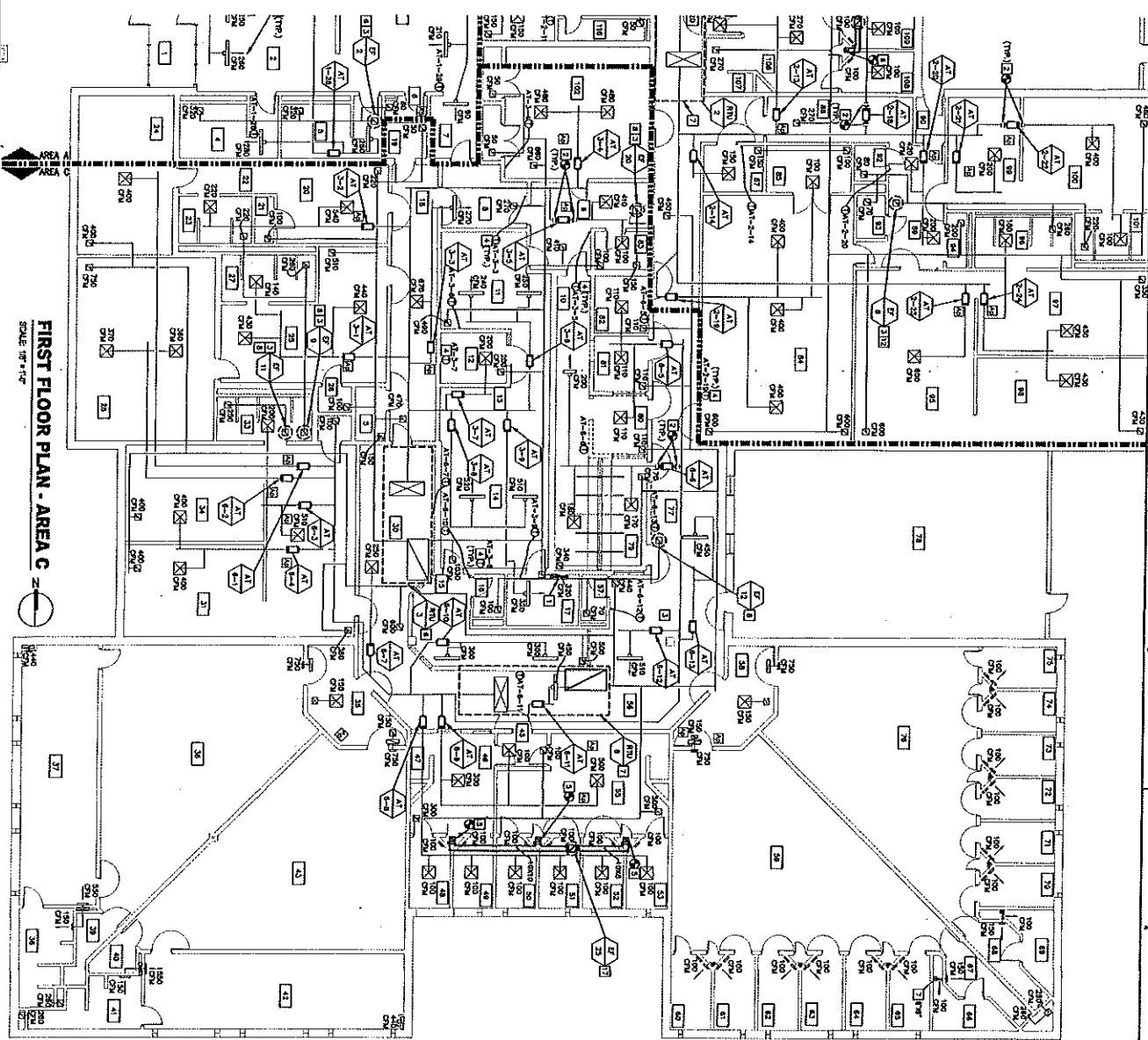
APPROVED BY: _____

REVISIONS:

NO.	DATE	DESCRIPTION
1	04/17/08	ISSUED FOR PERMITS
2	07/21/11	MECHANICAL NEW WORK PLANS

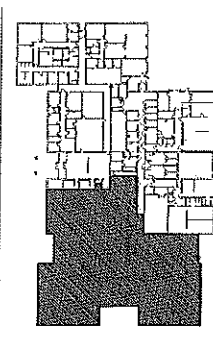
Scale: 1/8" = 1'-0"

M1.1



FIRST FLOOR PLAN - AREA C
 SCALE: 1/8" = 1'-0"

KEY PLAN - AREA C
 NO SCALE



ROOM IDENTIFICATION SCHEDULE

ROOM NO.	ROOM NAME	NO. OF ROOMS	NO. OF ROOMS TO BE REPAIRED
1	MECHANICAL	1	1
2	MECHANICAL	1	1
3	MECHANICAL	1	1
4	MECHANICAL	1	1
5	MECHANICAL	1	1
6	MECHANICAL	1	1
7	MECHANICAL	1	1
8	MECHANICAL	1	1
9	MECHANICAL	1	1
10	MECHANICAL	1	1
11	MECHANICAL	1	1
12	MECHANICAL	1	1
13	MECHANICAL	1	1
14	MECHANICAL	1	1
15	MECHANICAL	1	1
16	MECHANICAL	1	1
17	MECHANICAL	1	1
18	MECHANICAL	1	1
19	MECHANICAL	1	1
20	MECHANICAL	1	1
21	MECHANICAL	1	1
22	MECHANICAL	1	1
23	MECHANICAL	1	1
24	MECHANICAL	1	1
25	MECHANICAL	1	1
26	MECHANICAL	1	1
27	MECHANICAL	1	1
28	MECHANICAL	1	1
29	MECHANICAL	1	1
30	MECHANICAL	1	1
31	MECHANICAL	1	1
32	MECHANICAL	1	1
33	MECHANICAL	1	1
34	MECHANICAL	1	1
35	MECHANICAL	1	1
36	MECHANICAL	1	1
37	MECHANICAL	1	1
38	MECHANICAL	1	1
39	MECHANICAL	1	1
40	MECHANICAL	1	1
41	MECHANICAL	1	1
42	MECHANICAL	1	1
43	MECHANICAL	1	1
44	MECHANICAL	1	1
45	MECHANICAL	1	1
46	MECHANICAL	1	1
47	MECHANICAL	1	1
48	MECHANICAL	1	1
49	MECHANICAL	1	1
50	MECHANICAL	1	1
51	MECHANICAL	1	1
52	MECHANICAL	1	1
53	MECHANICAL	1	1
54	MECHANICAL	1	1
55	MECHANICAL	1	1
56	MECHANICAL	1	1
57	MECHANICAL	1	1
58	MECHANICAL	1	1
59	MECHANICAL	1	1
60	MECHANICAL	1	1
61	MECHANICAL	1	1
62	MECHANICAL	1	1
63	MECHANICAL	1	1
64	MECHANICAL	1	1
65	MECHANICAL	1	1
66	MECHANICAL	1	1
67	MECHANICAL	1	1
68	MECHANICAL	1	1
69	MECHANICAL	1	1
70	MECHANICAL	1	1
71	MECHANICAL	1	1
72	MECHANICAL	1	1
73	MECHANICAL	1	1
74	MECHANICAL	1	1
75	MECHANICAL	1	1
76	MECHANICAL	1	1
77	MECHANICAL	1	1
78	MECHANICAL	1	1
79	MECHANICAL	1	1
80	MECHANICAL	1	1
81	MECHANICAL	1	1
82	MECHANICAL	1	1
83	MECHANICAL	1	1
84	MECHANICAL	1	1
85	MECHANICAL	1	1
86	MECHANICAL	1	1
87	MECHANICAL	1	1
88	MECHANICAL	1	1
89	MECHANICAL	1	1
90	MECHANICAL	1	1
91	MECHANICAL	1	1
92	MECHANICAL	1	1
93	MECHANICAL	1	1
94	MECHANICAL	1	1
95	MECHANICAL	1	1
96	MECHANICAL	1	1
97	MECHANICAL	1	1
98	MECHANICAL	1	1
99	MECHANICAL	1	1
100	MECHANICAL	1	1

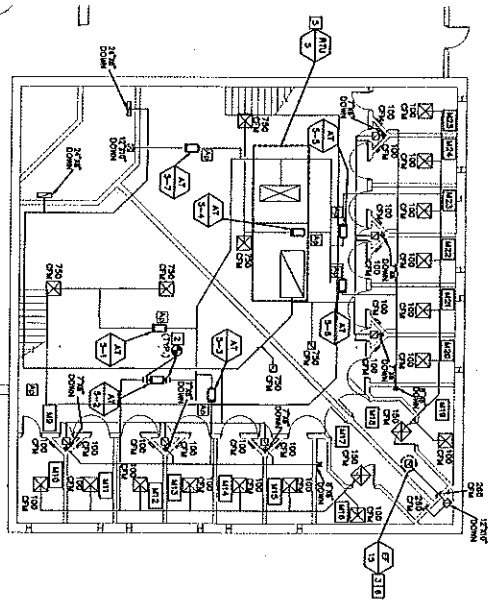
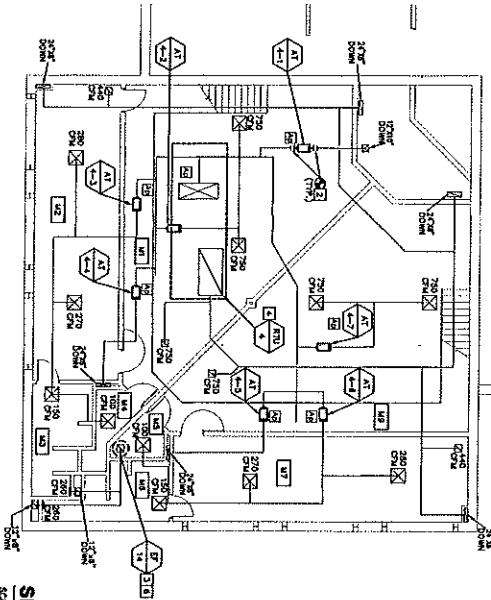
- KEY NOTES**
1. REMOVE EXISTING ROOFTOP HVAC UNITS AND REPAIR ROOF AS NECESSARY. REPAIRS SHALL BE COMPLETED THROUGH BALK.
 2. VERIFY EXISTING DUCT AS REQUIRED TO INSTALL NEW UNITS. REMOVE EXISTING DUCT AND REPAIR AS REQUIRED TO INSTALL NEW UNITS.
 3. REMOVE EXISTING DUCT AND REPAIR AS REQUIRED TO INSTALL NEW UNITS.
 4. REMOVE EXISTING DUCT AND REPAIR AS REQUIRED TO INSTALL NEW UNITS.
 5. REMOVE EXISTING DUCT AND REPAIR AS REQUIRED TO INSTALL NEW UNITS.
 6. REMOVE EXISTING DUCT AND REPAIR AS REQUIRED TO INSTALL NEW UNITS.
 7. REMOVE EXISTING DUCT AND REPAIR AS REQUIRED TO INSTALL NEW UNITS.
 8. REMOVE EXISTING DUCT AND REPAIR AS REQUIRED TO INSTALL NEW UNITS.
 9. REMOVE EXISTING DUCT AND REPAIR AS REQUIRED TO INSTALL NEW UNITS.
 10. REMOVE EXISTING DUCT AND REPAIR AS REQUIRED TO INSTALL NEW UNITS.

BRIC
 PARTNERSHIP, LLC
 CONSULTING ENGINEERS

REPLACE ROOFTOP HVAC UNITS
 ADULT DETENTION CENTER

FRANKLIN COUNTY
 UNION, MISSOURI

APPROVED BY: _____
 DATE: _____
 REVISIONS: _____
 RECORDED BUSINESS: _____
 DATE: 07/31/11
 R.I. DATE: 04/17/08
 MECHANICAL
 NEW WORK PLANS
M1.2



SECOND FLOOR PLAN

SCALE: 1/8" = 1'-0"



ROOM IDENTIFICATION SCHEDULE

ROOM NO.	ROOM NAME
101	RECEIVING AREA
102	RECEIVING AREA
103	RECEIVING AREA
104	RECEIVING AREA
105	RECEIVING AREA
106	RECEIVING AREA
107	RECEIVING AREA
108	RECEIVING AREA
109	RECEIVING AREA
110	RECEIVING AREA
111	RECEIVING AREA
112	RECEIVING AREA
113	RECEIVING AREA
114	RECEIVING AREA
115	RECEIVING AREA
116	RECEIVING AREA
117	RECEIVING AREA
118	RECEIVING AREA
119	RECEIVING AREA
120	RECEIVING AREA
121	RECEIVING AREA
122	RECEIVING AREA
123	RECEIVING AREA
124	RECEIVING AREA
125	RECEIVING AREA
126	RECEIVING AREA
127	RECEIVING AREA
128	RECEIVING AREA
129	RECEIVING AREA
130	RECEIVING AREA
131	RECEIVING AREA
132	RECEIVING AREA
133	RECEIVING AREA
134	RECEIVING AREA
135	RECEIVING AREA
136	RECEIVING AREA
137	RECEIVING AREA
138	RECEIVING AREA
139	RECEIVING AREA
140	RECEIVING AREA
141	RECEIVING AREA
142	RECEIVING AREA
143	RECEIVING AREA
144	RECEIVING AREA
145	RECEIVING AREA
146	RECEIVING AREA
147	RECEIVING AREA
148	RECEIVING AREA
149	RECEIVING AREA
150	RECEIVING AREA
151	RECEIVING AREA
152	RECEIVING AREA
153	RECEIVING AREA
154	RECEIVING AREA
155	RECEIVING AREA
156	RECEIVING AREA
157	RECEIVING AREA
158	RECEIVING AREA
159	RECEIVING AREA
160	RECEIVING AREA
161	RECEIVING AREA
162	RECEIVING AREA
163	RECEIVING AREA
164	RECEIVING AREA
165	RECEIVING AREA
166	RECEIVING AREA
167	RECEIVING AREA
168	RECEIVING AREA
169	RECEIVING AREA
170	RECEIVING AREA
171	RECEIVING AREA
172	RECEIVING AREA
173	RECEIVING AREA
174	RECEIVING AREA
175	RECEIVING AREA
176	RECEIVING AREA
177	RECEIVING AREA
178	RECEIVING AREA
179	RECEIVING AREA
180	RECEIVING AREA
181	RECEIVING AREA
182	RECEIVING AREA
183	RECEIVING AREA
184	RECEIVING AREA
185	RECEIVING AREA
186	RECEIVING AREA
187	RECEIVING AREA
188	RECEIVING AREA
189	RECEIVING AREA
190	RECEIVING AREA
191	RECEIVING AREA
192	RECEIVING AREA
193	RECEIVING AREA
194	RECEIVING AREA
195	RECEIVING AREA
196	RECEIVING AREA
197	RECEIVING AREA
198	RECEIVING AREA
199	RECEIVING AREA
200	RECEIVING AREA

- GENERAL NOTES**
1. UNDER EACH UNIT, PROVIDE NEW SERVICE UNITS, PANELS AND ALL ASSOCIATED WIRING BETWEEN PANELS. ALL WIRING SHALL BE CONFINED THROUGH RISER.
 2. VERIFY EXISTING DUCT AS REQUIRED TO INSTALL NEW UNITS. PROVIDE ALL NEW DUCTWORK AS SHOWN UNLESS OTHERWISE NOTED.
 3. ALL UNITS SHALL BE INSTALLED TO THE EXISTING STRUCTURE. UNITS SHALL BE REMOVED TO THE EXISTING STRUCTURE. PROVIDE ALL NEW DUCTWORK AS SHOWN UNLESS OTHERWISE NOTED.
 4. PROVIDE ALL NEW DUCTWORK AS SHOWN UNLESS OTHERWISE NOTED. PROVIDE ALL NEW DUCTWORK AS SHOWN UNLESS OTHERWISE NOTED.
 5. PROVIDE ALL NEW DUCTWORK AS SHOWN UNLESS OTHERWISE NOTED. PROVIDE ALL NEW DUCTWORK AS SHOWN UNLESS OTHERWISE NOTED.
 6. PROVIDE ALL NEW DUCTWORK AS SHOWN UNLESS OTHERWISE NOTED. PROVIDE ALL NEW DUCTWORK AS SHOWN UNLESS OTHERWISE NOTED.
 7. PROVIDE ALL NEW DUCTWORK AS SHOWN UNLESS OTHERWISE NOTED. PROVIDE ALL NEW DUCTWORK AS SHOWN UNLESS OTHERWISE NOTED.
 8. PROVIDE ALL NEW DUCTWORK AS SHOWN UNLESS OTHERWISE NOTED. PROVIDE ALL NEW DUCTWORK AS SHOWN UNLESS OTHERWISE NOTED.
 9. PROVIDE ALL NEW DUCTWORK AS SHOWN UNLESS OTHERWISE NOTED. PROVIDE ALL NEW DUCTWORK AS SHOWN UNLESS OTHERWISE NOTED.
 10. PROVIDE ALL NEW DUCTWORK AS SHOWN UNLESS OTHERWISE NOTED. PROVIDE ALL NEW DUCTWORK AS SHOWN UNLESS OTHERWISE NOTED.
 11. PROVIDE ALL NEW DUCTWORK AS SHOWN UNLESS OTHERWISE NOTED. PROVIDE ALL NEW DUCTWORK AS SHOWN UNLESS OTHERWISE NOTED.
 12. PROVIDE ALL NEW DUCTWORK AS SHOWN UNLESS OTHERWISE NOTED. PROVIDE ALL NEW DUCTWORK AS SHOWN UNLESS OTHERWISE NOTED.
 13. PROVIDE ALL NEW DUCTWORK AS SHOWN UNLESS OTHERWISE NOTED. PROVIDE ALL NEW DUCTWORK AS SHOWN UNLESS OTHERWISE NOTED.
 14. PROVIDE ALL NEW DUCTWORK AS SHOWN UNLESS OTHERWISE NOTED. PROVIDE ALL NEW DUCTWORK AS SHOWN UNLESS OTHERWISE NOTED.
 15. PROVIDE ALL NEW DUCTWORK AS SHOWN UNLESS OTHERWISE NOTED. PROVIDE ALL NEW DUCTWORK AS SHOWN UNLESS OTHERWISE NOTED.
 16. PROVIDE ALL NEW DUCTWORK AS SHOWN UNLESS OTHERWISE NOTED. PROVIDE ALL NEW DUCTWORK AS SHOWN UNLESS OTHERWISE NOTED.
 17. PROVIDE ALL NEW DUCTWORK AS SHOWN UNLESS OTHERWISE NOTED. PROVIDE ALL NEW DUCTWORK AS SHOWN UNLESS OTHERWISE NOTED.
 18. PROVIDE ALL NEW DUCTWORK AS SHOWN UNLESS OTHERWISE NOTED. PROVIDE ALL NEW DUCTWORK AS SHOWN UNLESS OTHERWISE NOTED.
 19. PROVIDE ALL NEW DUCTWORK AS SHOWN UNLESS OTHERWISE NOTED. PROVIDE ALL NEW DUCTWORK AS SHOWN UNLESS OTHERWISE NOTED.
 20. PROVIDE ALL NEW DUCTWORK AS SHOWN UNLESS OTHERWISE NOTED. PROVIDE ALL NEW DUCTWORK AS SHOWN UNLESS OTHERWISE NOTED.

REPLACE ROOFTOP HVAC UNITS
 ADULT DETENTION CENTER
 FRANKLIN COUNTY
 UNION, MISSOURI

APPROVED BY: _____

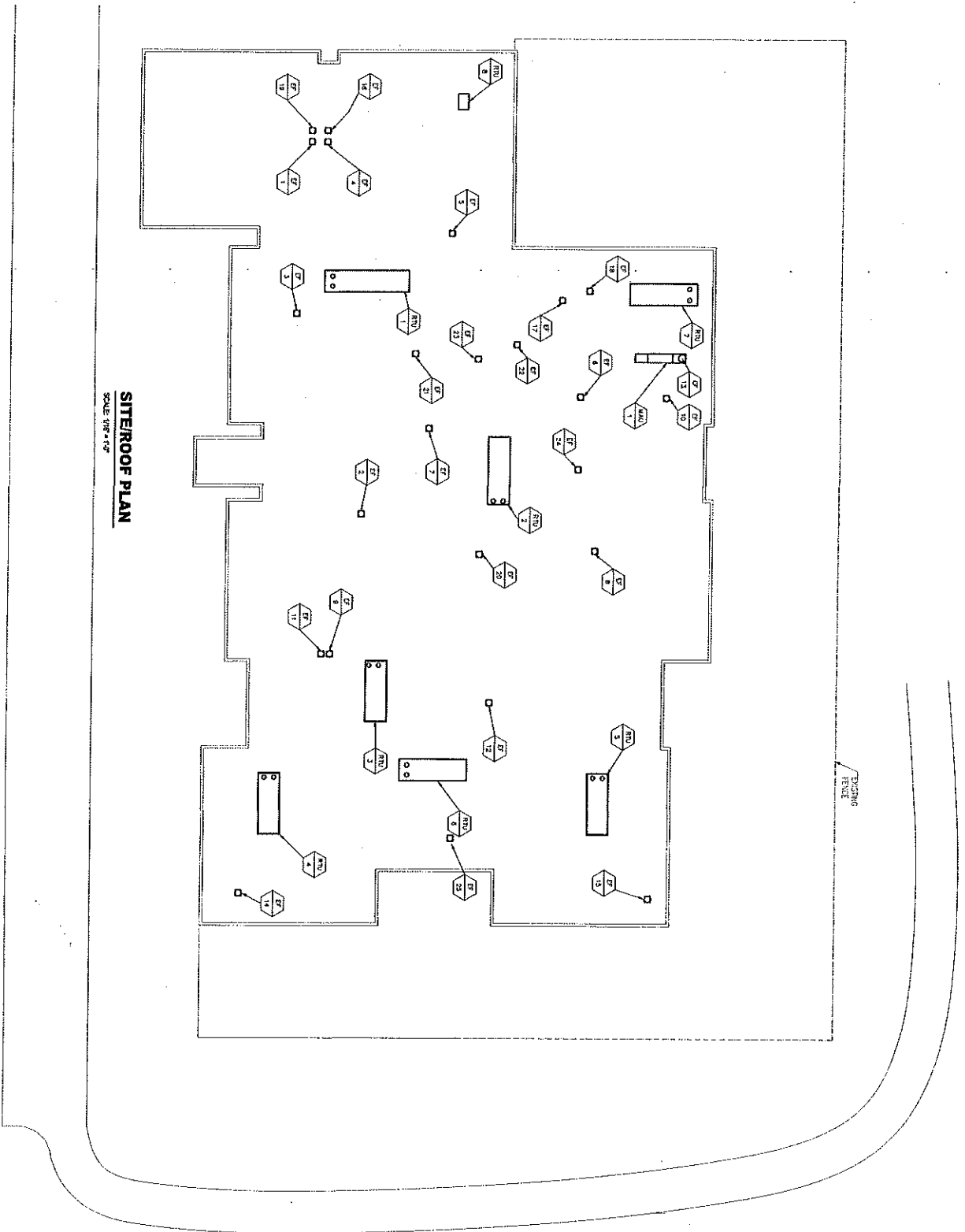
BRIC
 PARTNERSHIP, LLC
 CONSULTING ENGINEERS

MECHANICAL PLANS
 NEW WORK
 M2.0

REVISIONS:
 DATE: 04/17/09
 REVISION: 1
 BY: [Signature]

RECORD DRAWINGS
 DATE: 01/21/11
 BY: [Signature]

DATE: 04/17/09



SITEROOF PLAN
 SCALE: 1/8" = 1'-0"

<p>M2.1</p>	<p>MECHANICAL ROOF PLAN</p>	<p>Rev. Date: 04/17/08</p>	<p>ISSUE NO. 04/17/08</p>		<p>BRIC PARTNERSHIP, LLC CONSULTING ENGINEERS</p>	<p>APPROVED BY:</p>	<p>REPLACE ROOFTOP HVAC UNITS ADULT DETENTION CENTER FRANKLIN COUNTY UNION, MISSOURI</p>
	<p>REVISIONS:</p>	<p>DATE:</p>	<p>BY:</p>	<p>DESCRIPTION:</p>	<p>DATE:</p>	<p>BY:</p>	
	<p>DATE: 04/17/08</p>	<p>BY: [Signature]</p>	<p>DESCRIPTION: [Text]</p>	<p>DATE: [Text]</p>	<p>BY: [Text]</p>		
	<p>DATE: [Text]</p>	<p>BY: [Text]</p>	<p>DESCRIPTION: [Text]</p>	<p>DATE: [Text]</p>	<p>BY: [Text]</p>		
	<p>DATE: [Text]</p>	<p>BY: [Text]</p>	<p>DESCRIPTION: [Text]</p>	<p>DATE: [Text]</p>	<p>BY: [Text]</p>		

PACKAGED ROOFTOP UNIT SCHEDULE

UNIT NO.	MANUFACTURER & MODEL NO.	TYPE	ROOM NO.	ROOM NAME	ZONE	STATUS	DATE	REMARKS
101	TRANE RTU-100	RTU	101	OFFICE	101	OK	10/10/10	
102	TRANE RTU-100	RTU	102	OFFICE	102	OK	10/10/10	
103	TRANE RTU-100	RTU	103	OFFICE	103	OK	10/10/10	
104	TRANE RTU-100	RTU	104	OFFICE	104	OK	10/10/10	
105	TRANE RTU-100	RTU	105	OFFICE	105	OK	10/10/10	
106	TRANE RTU-100	RTU	106	OFFICE	106	OK	10/10/10	
107	TRANE RTU-100	RTU	107	OFFICE	107	OK	10/10/10	
108	TRANE RTU-100	RTU	108	OFFICE	108	OK	10/10/10	
109	TRANE RTU-100	RTU	109	OFFICE	109	OK	10/10/10	
110	TRANE RTU-100	RTU	110	OFFICE	110	OK	10/10/10	
111	TRANE RTU-100	RTU	111	OFFICE	111	OK	10/10/10	
112	TRANE RTU-100	RTU	112	OFFICE	112	OK	10/10/10	
113	TRANE RTU-100	RTU	113	OFFICE	113	OK	10/10/10	
114	TRANE RTU-100	RTU	114	OFFICE	114	OK	10/10/10	
115	TRANE RTU-100	RTU	115	OFFICE	115	OK	10/10/10	
116	TRANE RTU-100	RTU	116	OFFICE	116	OK	10/10/10	
117	TRANE RTU-100	RTU	117	OFFICE	117	OK	10/10/10	
118	TRANE RTU-100	RTU	118	OFFICE	118	OK	10/10/10	
119	TRANE RTU-100	RTU	119	OFFICE	119	OK	10/10/10	
120	TRANE RTU-100	RTU	120	OFFICE	120	OK	10/10/10	

NOTE: UNIT VOLTAGE IS 208V/3PH/4W/60HZ.
 NOTE: UNIT WEIGHT IS APPROXIMATELY 1000 LBS.
 NOTE: UNIT WEIGHT IS APPROXIMATELY 1000 LBS.
 NOTE: UNIT WEIGHT IS APPROXIMATELY 1000 LBS.
 NOTE: UNIT WEIGHT IS APPROXIMATELY 1000 LBS.
 NOTE: UNIT WEIGHT IS APPROXIMATELY 1000 LBS.

NOTE: UNIT VOLTAGE IS 208V/3PH/4W/60HZ.
 NOTE: UNIT WEIGHT IS APPROXIMATELY 1000 LBS.
 NOTE: UNIT WEIGHT IS APPROXIMATELY 1000 LBS.
 NOTE: UNIT WEIGHT IS APPROXIMATELY 1000 LBS.
 NOTE: UNIT WEIGHT IS APPROXIMATELY 1000 LBS.

AIR TERMINAL SCHEDULE

UNIT NO.	MANUFACTURER & MODEL NO.	TYPE	ROOM NO.	ROOM NAME	ZONE	STATUS	DATE	REMARKS
101	TRANE RTU-100	RTU	101	OFFICE	101	OK	10/10/10	
102	TRANE RTU-100	RTU	102	OFFICE	102	OK	10/10/10	
103	TRANE RTU-100	RTU	103	OFFICE	103	OK	10/10/10	
104	TRANE RTU-100	RTU	104	OFFICE	104	OK	10/10/10	
105	TRANE RTU-100	RTU	105	OFFICE	105	OK	10/10/10	
106	TRANE RTU-100	RTU	106	OFFICE	106	OK	10/10/10	
107	TRANE RTU-100	RTU	107	OFFICE	107	OK	10/10/10	
108	TRANE RTU-100	RTU	108	OFFICE	108	OK	10/10/10	
109	TRANE RTU-100	RTU	109	OFFICE	109	OK	10/10/10	
110	TRANE RTU-100	RTU	110	OFFICE	110	OK	10/10/10	
111	TRANE RTU-100	RTU	111	OFFICE	111	OK	10/10/10	
112	TRANE RTU-100	RTU	112	OFFICE	112	OK	10/10/10	
113	TRANE RTU-100	RTU	113	OFFICE	113	OK	10/10/10	
114	TRANE RTU-100	RTU	114	OFFICE	114	OK	10/10/10	
115	TRANE RTU-100	RTU	115	OFFICE	115	OK	10/10/10	
116	TRANE RTU-100	RTU	116	OFFICE	116	OK	10/10/10	
117	TRANE RTU-100	RTU	117	OFFICE	117	OK	10/10/10	
118	TRANE RTU-100	RTU	118	OFFICE	118	OK	10/10/10	
119	TRANE RTU-100	RTU	119	OFFICE	119	OK	10/10/10	
120	TRANE RTU-100	RTU	120	OFFICE	120	OK	10/10/10	

NOTE: UNIT VOLTAGE IS 208V/3PH/4W/60HZ.
 NOTE: UNIT WEIGHT IS APPROXIMATELY 1000 LBS.
 NOTE: UNIT WEIGHT IS APPROXIMATELY 1000 LBS.
 NOTE: UNIT WEIGHT IS APPROXIMATELY 1000 LBS.
 NOTE: UNIT WEIGHT IS APPROXIMATELY 1000 LBS.

NOTE: UNIT VOLTAGE IS 208V/3PH/4W/60HZ.
 NOTE: UNIT WEIGHT IS APPROXIMATELY 1000 LBS.
 NOTE: UNIT WEIGHT IS APPROXIMATELY 1000 LBS.
 NOTE: UNIT WEIGHT IS APPROXIMATELY 1000 LBS.
 NOTE: UNIT WEIGHT IS APPROXIMATELY 1000 LBS.

AIR TERMINAL SCHEDULE

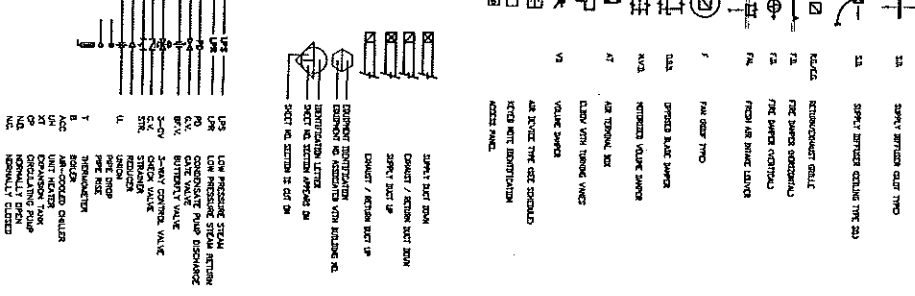
UNIT NO.	MANUFACTURER & MODEL NO.	TYPE	ROOM NO.	ROOM NAME	ZONE	STATUS	DATE	REMARKS
101	TRANE RTU-100	RTU	101	OFFICE	101	OK	10/10/10	
102	TRANE RTU-100	RTU	102	OFFICE	102	OK	10/10/10	
103	TRANE RTU-100	RTU	103	OFFICE	103	OK	10/10/10	
104	TRANE RTU-100	RTU	104	OFFICE	104	OK	10/10/10	
105	TRANE RTU-100	RTU	105	OFFICE	105	OK	10/10/10	
106	TRANE RTU-100	RTU	106	OFFICE	106	OK	10/10/10	
107	TRANE RTU-100	RTU	107	OFFICE	107	OK	10/10/10	
108	TRANE RTU-100	RTU	108	OFFICE	108	OK	10/10/10	
109	TRANE RTU-100	RTU	109	OFFICE	109	OK	10/10/10	
110	TRANE RTU-100	RTU	110	OFFICE	110	OK	10/10/10	
111	TRANE RTU-100	RTU	111	OFFICE	111	OK	10/10/10	
112	TRANE RTU-100	RTU	112	OFFICE	112	OK	10/10/10	
113	TRANE RTU-100	RTU	113	OFFICE	113	OK	10/10/10	
114	TRANE RTU-100	RTU	114	OFFICE	114	OK	10/10/10	
115	TRANE RTU-100	RTU	115	OFFICE	115	OK	10/10/10	
116	TRANE RTU-100	RTU	116	OFFICE	116	OK	10/10/10	
117	TRANE RTU-100	RTU	117	OFFICE	117	OK	10/10/10	
118	TRANE RTU-100	RTU	118	OFFICE	118	OK	10/10/10	
119	TRANE RTU-100	RTU	119	OFFICE	119	OK	10/10/10	
120	TRANE RTU-100	RTU	120	OFFICE	120	OK	10/10/10	

NOTE: UNIT VOLTAGE IS 208V/3PH/4W/60HZ.
 NOTE: UNIT WEIGHT IS APPROXIMATELY 1000 LBS.
 NOTE: UNIT WEIGHT IS APPROXIMATELY 1000 LBS.
 NOTE: UNIT WEIGHT IS APPROXIMATELY 1000 LBS.
 NOTE: UNIT WEIGHT IS APPROXIMATELY 1000 LBS.

NOTE: UNIT VOLTAGE IS 208V/3PH/4W/60HZ.
 NOTE: UNIT WEIGHT IS APPROXIMATELY 1000 LBS.
 NOTE: UNIT WEIGHT IS APPROXIMATELY 1000 LBS.
 NOTE: UNIT WEIGHT IS APPROXIMATELY 1000 LBS.
 NOTE: UNIT WEIGHT IS APPROXIMATELY 1000 LBS.

SYMBOLS AND ABBREVIATIONS

1. AIR TERMINAL
 2. AIR TERMINAL
 3. AIR TERMINAL
 4. AIR TERMINAL
 5. AIR TERMINAL
 6. AIR TERMINAL
 7. AIR TERMINAL
 8. AIR TERMINAL
 9. AIR TERMINAL
 10. AIR TERMINAL
 11. AIR TERMINAL
 12. AIR TERMINAL
 13. AIR TERMINAL
 14. AIR TERMINAL
 15. AIR TERMINAL
 16. AIR TERMINAL
 17. AIR TERMINAL
 18. AIR TERMINAL
 19. AIR TERMINAL
 20. AIR TERMINAL
 21. AIR TERMINAL
 22. AIR TERMINAL
 23. AIR TERMINAL
 24. AIR TERMINAL
 25. AIR TERMINAL
 26. AIR TERMINAL
 27. AIR TERMINAL
 28. AIR TERMINAL
 29. AIR TERMINAL
 30. AIR TERMINAL
 31. AIR TERMINAL
 32. AIR TERMINAL
 33. AIR TERMINAL
 34. AIR TERMINAL
 35. AIR TERMINAL
 36. AIR TERMINAL
 37. AIR TERMINAL
 38. AIR TERMINAL
 39. AIR TERMINAL
 40. AIR TERMINAL
 41. AIR TERMINAL
 42. AIR TERMINAL
 43. AIR TERMINAL
 44. AIR TERMINAL
 45. AIR TERMINAL
 46. AIR TERMINAL
 47. AIR TERMINAL
 48. AIR TERMINAL
 49. AIR TERMINAL
 50. AIR TERMINAL
 51. AIR TERMINAL
 52. AIR TERMINAL
 53. AIR TERMINAL
 54. AIR TERMINAL
 55. AIR TERMINAL
 56. AIR TERMINAL
 57. AIR TERMINAL
 58. AIR TERMINAL
 59. AIR TERMINAL
 60. AIR TERMINAL
 61. AIR TERMINAL
 62. AIR TERMINAL
 63. AIR TERMINAL
 64. AIR TERMINAL
 65. AIR TERMINAL
 66. AIR TERMINAL
 67. AIR TERMINAL
 68. AIR TERMINAL
 69. AIR TERMINAL
 70. AIR TERMINAL
 71. AIR TERMINAL
 72. AIR TERMINAL
 73. AIR TERMINAL
 74. AIR TERMINAL
 75. AIR TERMINAL
 76. AIR TERMINAL
 77. AIR TERMINAL
 78. AIR TERMINAL
 79. AIR TERMINAL
 80. AIR TERMINAL
 81. AIR TERMINAL
 82. AIR TERMINAL
 83. AIR TERMINAL
 84. AIR TERMINAL
 85. AIR TERMINAL
 86. AIR TERMINAL
 87. AIR TERMINAL
 88. AIR TERMINAL
 89. AIR TERMINAL
 90. AIR TERMINAL
 91. AIR TERMINAL
 92. AIR TERMINAL
 93. AIR TERMINAL
 94. AIR TERMINAL
 95. AIR TERMINAL
 96. AIR TERMINAL
 97. AIR TERMINAL
 98. AIR TERMINAL
 99. AIR TERMINAL
 100. AIR TERMINAL



REPLACE ROOFTOP HVAC UNITS

ADULT DETENTION CENTER

FRANKLIN COUNTY
UNION, MISSOURI

BRIC
PARTNERSHIP, LLC
CONSULTING ENGINEERS

APPROVED BY:

RECORD CHANGES

DATE: 01/23/11

BY: [Signature]

PROJECT: M3.0

