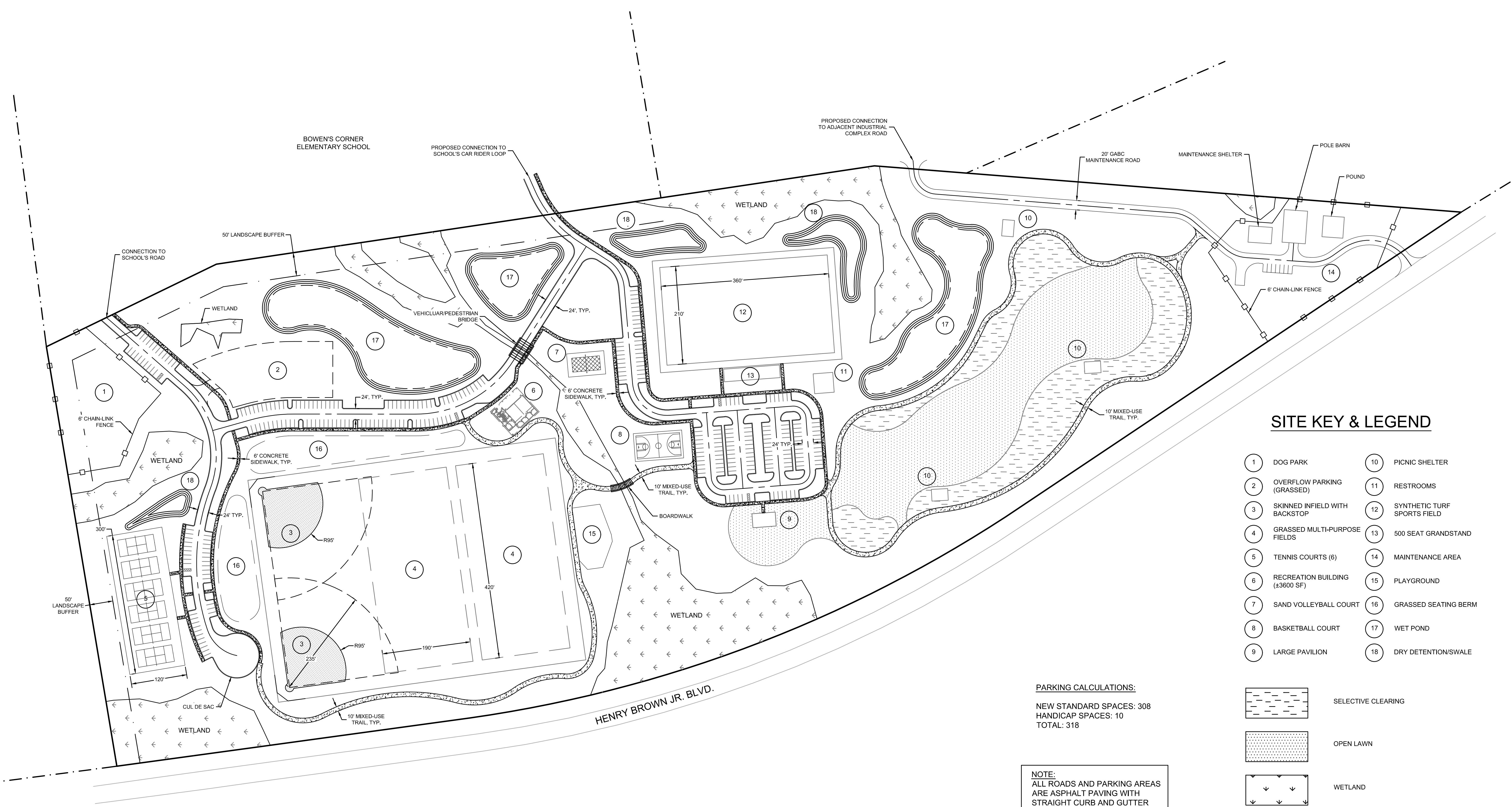
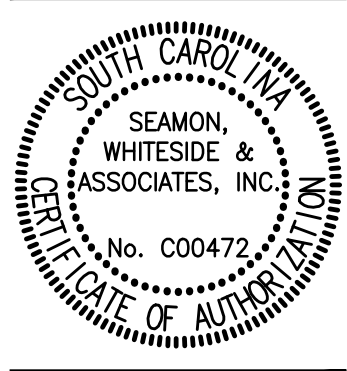


501 WANDO PARK BOULEVARD, SUITE 200 | MOUNT PLEASANT, SC 29464 | 508 RHETT STREET, SUITE 101 | GREENVILLE, SC 29601
 THIS DRAWING SHALL NOT BE REPRODUCED IN ANY MANNER OR USED FOR ANY PURPOSE WITHOUT WRITTEN PERMISSION
 COPYRIGHT © SEAMON, WHITESIDE & ASSOCIATES, INC.

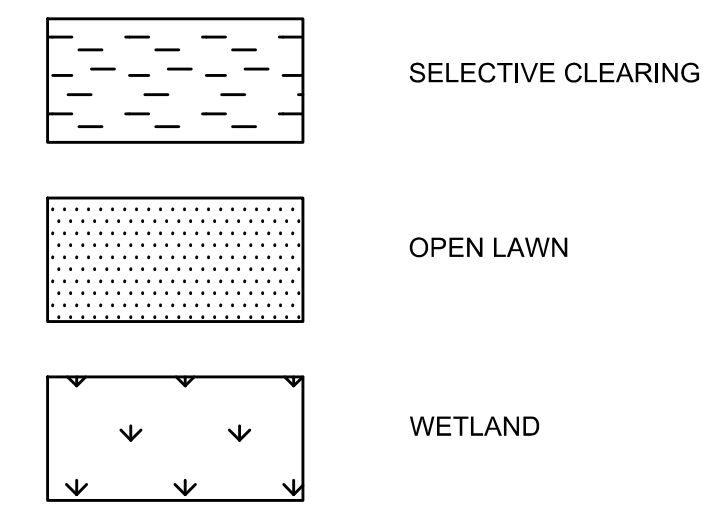


MOUNT PLEASANT, SC 843.884.1667
 GREENVILLE, SC 864.298.0534
 SUMMERVILLE, SC 843.972.0710
 SPARTANBURG, SC 864.298.0534
 CHARLOTTE, NC 980.312.5450
 WWW.SEAMONWHITESIDE.COM



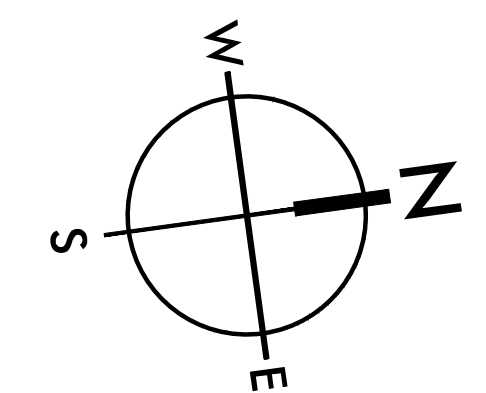
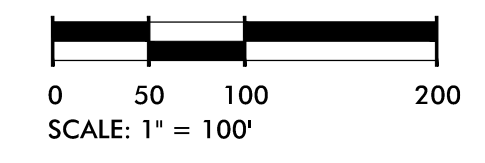
SITE KEY & LEGEND

- | | |
|----------------------------------|--------------------------------|
| 1 DOG PARK | 10 PICNIC SHELTER |
| 2 OVERFLOW PARKING (GRASSED) | 11 RESTROOMS |
| 3 SKINNED INFIELD WITH BACKSTOP | 12 SYNTHETIC TURF SPORTS FIELD |
| 4 GRASSED MULTI-PURPOSE FIELDS | 13 500 SEAT GRANDSTAND |
| 5 TENNIS COURTS (6) | 14 MAINTENANCE AREA |
| 6 RECREATION BUILDING (±3600 SF) | 15 PLAYGROUND |
| 7 SAND VOLLEYBALL COURT | 16 GRASSED SEATING BERM |
| 8 BASKETBALL COURT | 17 WET POND |
| 9 LARGE PAVILION | 18 DRY DETENTION/SWALE |



PARKING CALCULATIONS:
 NEW STANDARD SPACES: 308
 HANDICAP SPACES: 10
 TOTAL: 318

NOTE:
 ALL ROADS AND PARKING AREAS ARE ASPHALT PAVING WITH STRAIGHT CURB AND GUTTER



HANAHAN CITY PARK
 CITY OF HANAHAN
 HANAHAN, SOUTH CAROLINA

SW+ PROJECT: 7867
 DATE: 06/01/19
 DRAWN BY: BET
 CHECKED BY: JRP

REVISION HISTORY

NO.	DATE	DESCRIPTION

OVERALL MASTER SITE PLAN