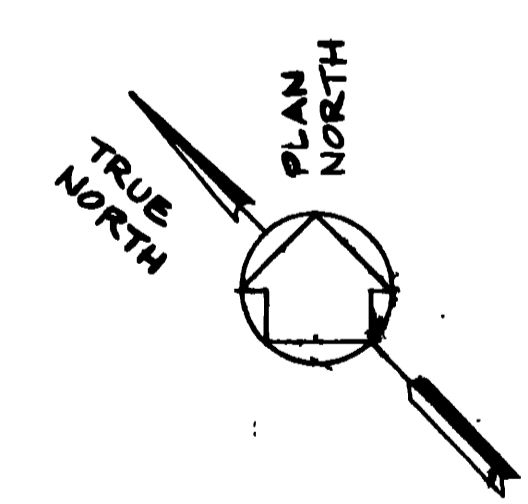


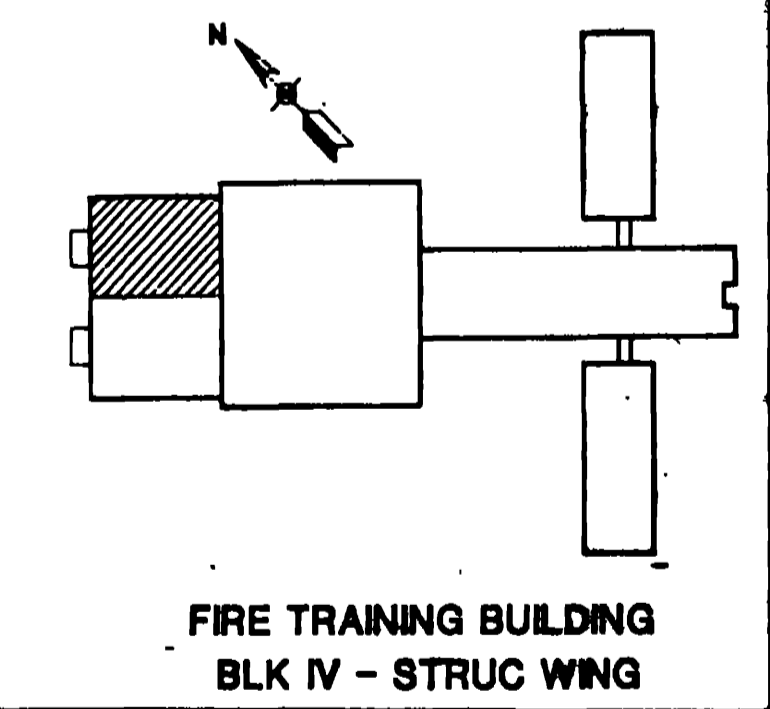
- LEGEND**
- FIRE RATED WALL - RATING AS NOTED ON DRAWINGS
 - ILLUMINATED EXIT SIGN WITH DIRECTION ARROW
 - ILLUMINATED EXIT SIGN
 - PATH OF ESCAPE
 - STAIRS - LOCATION OF PATH OF ESCAPE - FLOOR TO WHICH TO EXIT AS SHOWN
 - SPRINKLER
 - FIRE DEPARTMENT CONNECTION - TWO WAY EXCEPT WHERE SHOWN
 - FIRE EXTINGUISHER CABINET

- GENERAL NOTES**
1. REFER TO MECHANICAL DRAWING AND SPECIFICATIONS FOR FIRESTOPPING OF DUCTWORK PENETRATIONS OF FIRE RESISTANCE RATED CONSTRUCTION.
 2. REFER TO ARCHITECTURAL DRAWINGS AND SPECIFICATIONS FOR FIRESTOPPING OF PENETRATIONS AND WALL JOINTS OF FIRE RESISTANCE RATED CONSTRUCTION.
 3. REFER TO ELECTRICAL DRAWINGS FOR LOCATIONS OF FIRE ALARM CONTROL PANELS.
 4. REFER TO ELECTRICAL DRAWINGS FOR SCHEDULES, DETAILED LOCATIONS, CIRCUITING AND DETAILS OF EXIT LIGHTS.
 5. REFER TO FIRE ALARM RISER AND MECHANICAL CONTROL DIAGRAMS FOR FUNCTIONAL LAYOUT OF FIRE DETECTION DEVICES.
 6. REFER TO FIRE ALARM RISER DIAGRAMS FOR FUNCTIONAL LAYOUT OF FIRE ALARM STATIONS AND SIGNALING DEVICES.
 7. PORTABLE FIRE EXTINGUISHERS TO BE PROVIDED BY USING AGENCY. CABINETS SHALL BE PROVIDED WHERE SHOWN. REFER TO DWG A-24 FOR MINIMUM CABINET SIZE (MUST ACCOMMODATE 2-1/2 GALLON PRESSURIZED WATER EXTINGUISHER) FOR SURFACE MOUNTED OR RECESS MOUNTED.

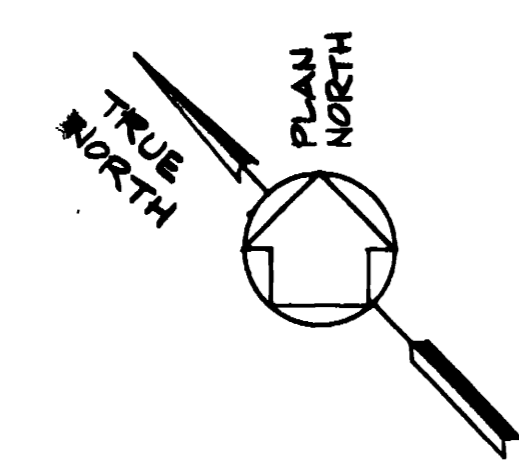
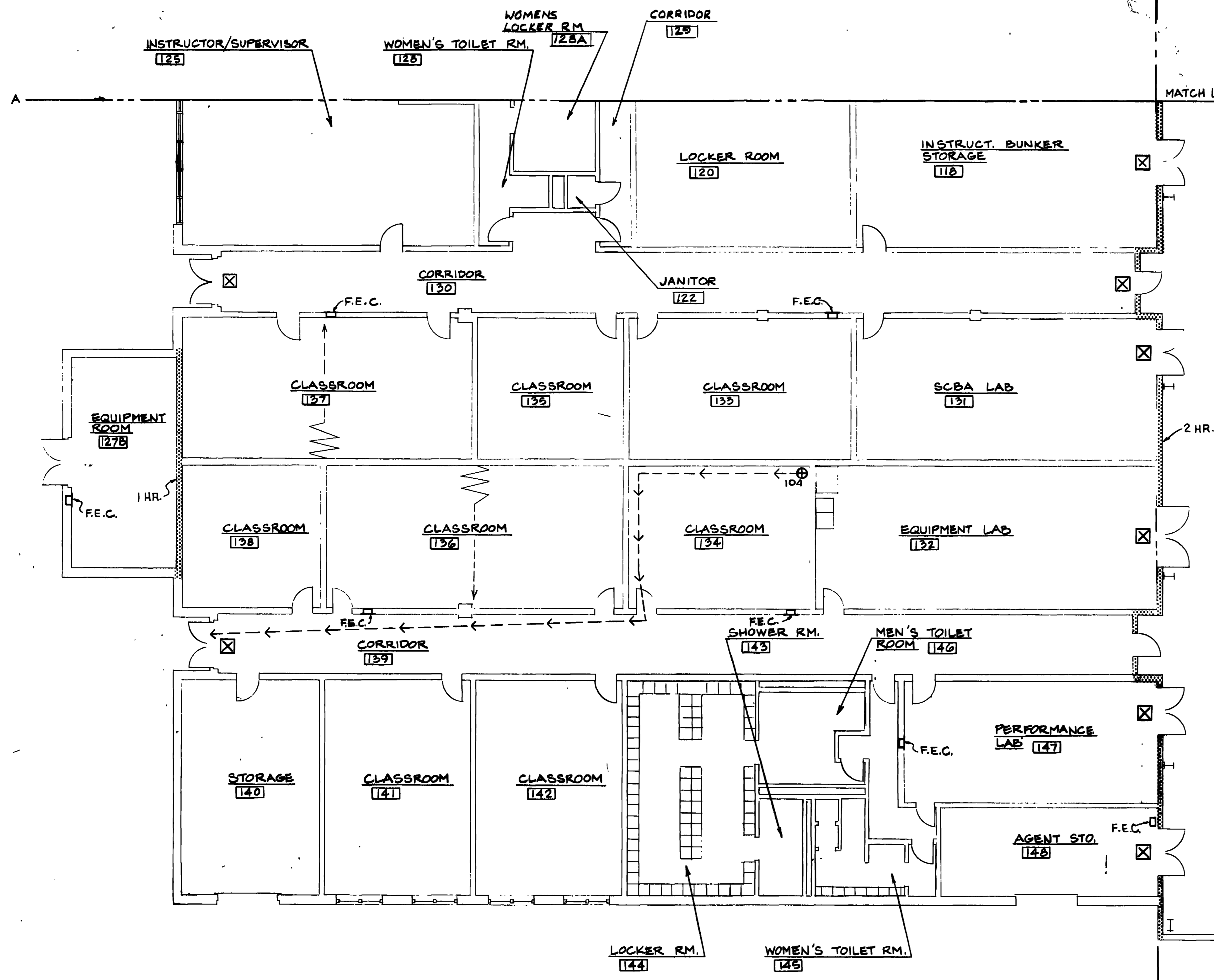
- NOTES**
1. THIS ENTIRE AREA TO BE SPRINKLERED.
 2. SPRINKLERS
 - A. CLASSIFICATION - LIGHT HAZARD
 - B. DEMAND AREA - 1500 SQ FT
 - C. DESIGN DENSITY - 0.10 GPM/SQ FT
 3. THE ENTIRE BLOCK III AND BLOCK IV AREAS TO BE SERVED BY ONE RISER. SEE BLOCK III - CRASH WING (PPP-2) FOR CONTINUATION.
 4. FIRE EXTINGUISHERS - SIZE FIRE EXTINGUISHER CABINETS FOR A MINIMUM 2-A RATED EXTINGUISHER.



FLOOR PLAN
SCALE 1/8" = 1'-0"



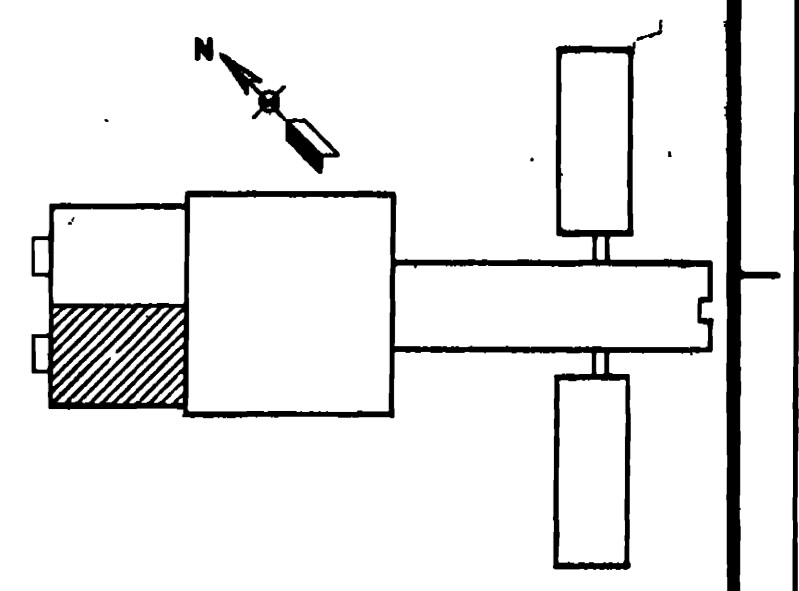
WALK, HAYDEL & ASSOC. INC. ENGINEERS / ARCHITECTS NEW ORLEANS MOBILE BATON ROUGE		U.S. ARMY ENGINEER DISTRICT, FORT WORTH CORPS OF ENGINEERS FORT WORTH, TEXAS	
DESIGNED BY: J.E.K.P.		GOODFELLOW AIR FORCE BASE SAN ANGELO, TEXAS	
REVIEWED BY: J.M.		FIRE TRAINING COMPLEX BLOCK IV - STRUCTURAL WING FIRE TRAINING BUILDING FIRE PROTECTION PLAN	
SUBMITTED BY: [Signature]		CONTR. NO. DACKS-92-C-0155 DRAWING NUMBER: FPP-1 OF 12	
DATE: JUN 1992		SHEET NO. 147	



FLOOR PLAN
SCALE 1/8" = 1'-0"

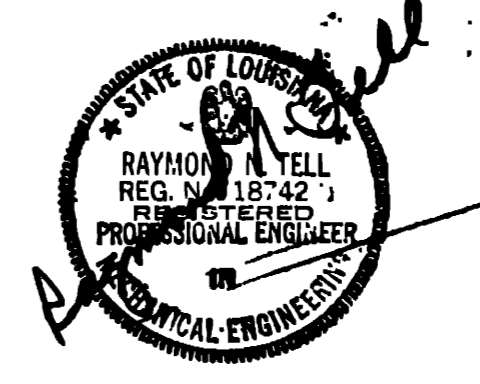
NOTES

1. THIS ENTIRE AREA TO BE SPRINKLERED.
2. SPRINKLERS
A. CLASSIFICATION - LIGHT HAZARD
B. DEMAND AREA - 1500 SQ FT
C. DESIGN DENSITY - 0.10 GPM/SQ FT
3. THE ENTIRE BLOCK III AND BLOCK IV AREAS TO BE SERVED BY ONE RISER. SEE BLOCK IV STRUCTURAL WING (PPP-1) FOR CONTINUATION.
4. SEE SHEET PPP-1 FOR GENERAL NOTES AND LEGEND.
5. FIRE EXTINGUISHERS
A. EQUIP RM 127B - SIZE FIRE EXTINGUISHER CABINET FOR A MINIMUM 2-A; C RATED EXTINGUISHER.
B. ALL OTHER AREAS - SIZE FIRE EXTINGUISHER CABINETS FOR A MINIMUM 2-A RATED EXTINGUISHER.

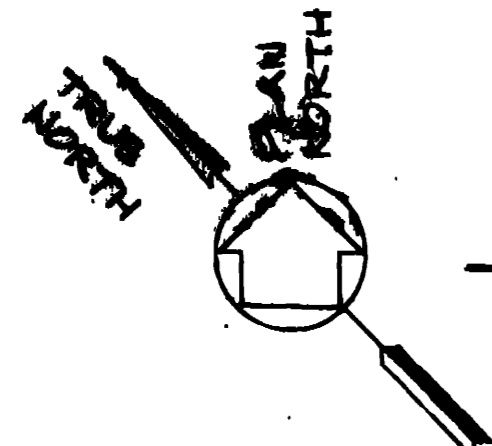
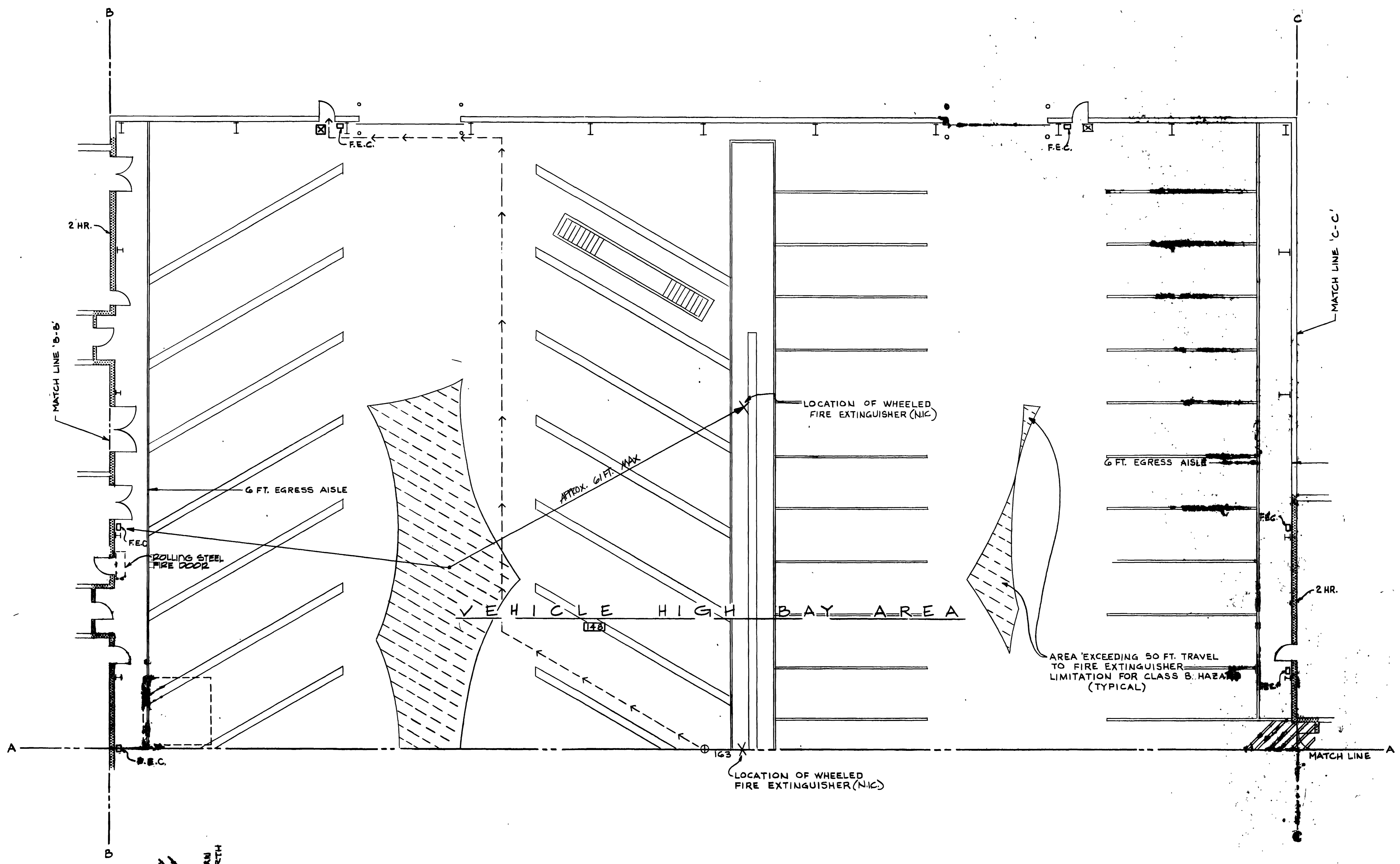


**FIRE TRAINING BUILDING
BLK III - CRASH WING**

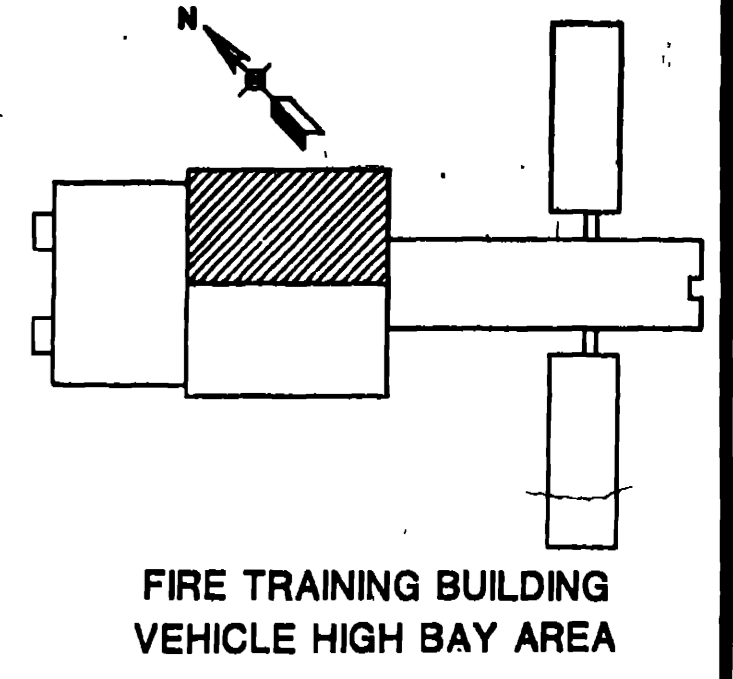
WALK, HAYDEL & ASSOC. INC. ENGINEERS / ARCHITECTS NEW ORLEANS, MOBILE BATON ROUGE		U.S. ARMY ENGINEER DISTRICT, FORT WORTH CORPS OF ENGINEERS FORT WORTH, TEXAS	
GOODFELLOW AIR FORCE BASE SAN ANGELO, TEXAS			
FIRE TRAINING COMPLEX BLOCK III-CRASH WING FIRE TRAINING BUILDING FIRE PROTECTION PLAN			
DESIGNED BY: R.I.	CHECKED BY: T.M.	DATE: JUN 92 REVISED TO REFLECT W.I. CHANGE	SHEET NO. 148 FPP-20F 12



Q2

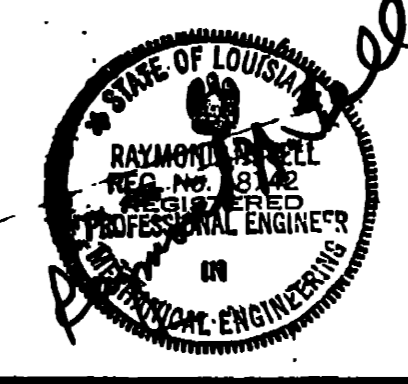


FLOOR PLAN
SCALE 1/8" = 1'-0"



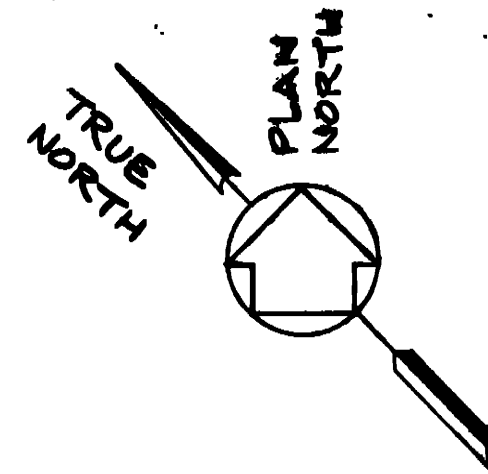
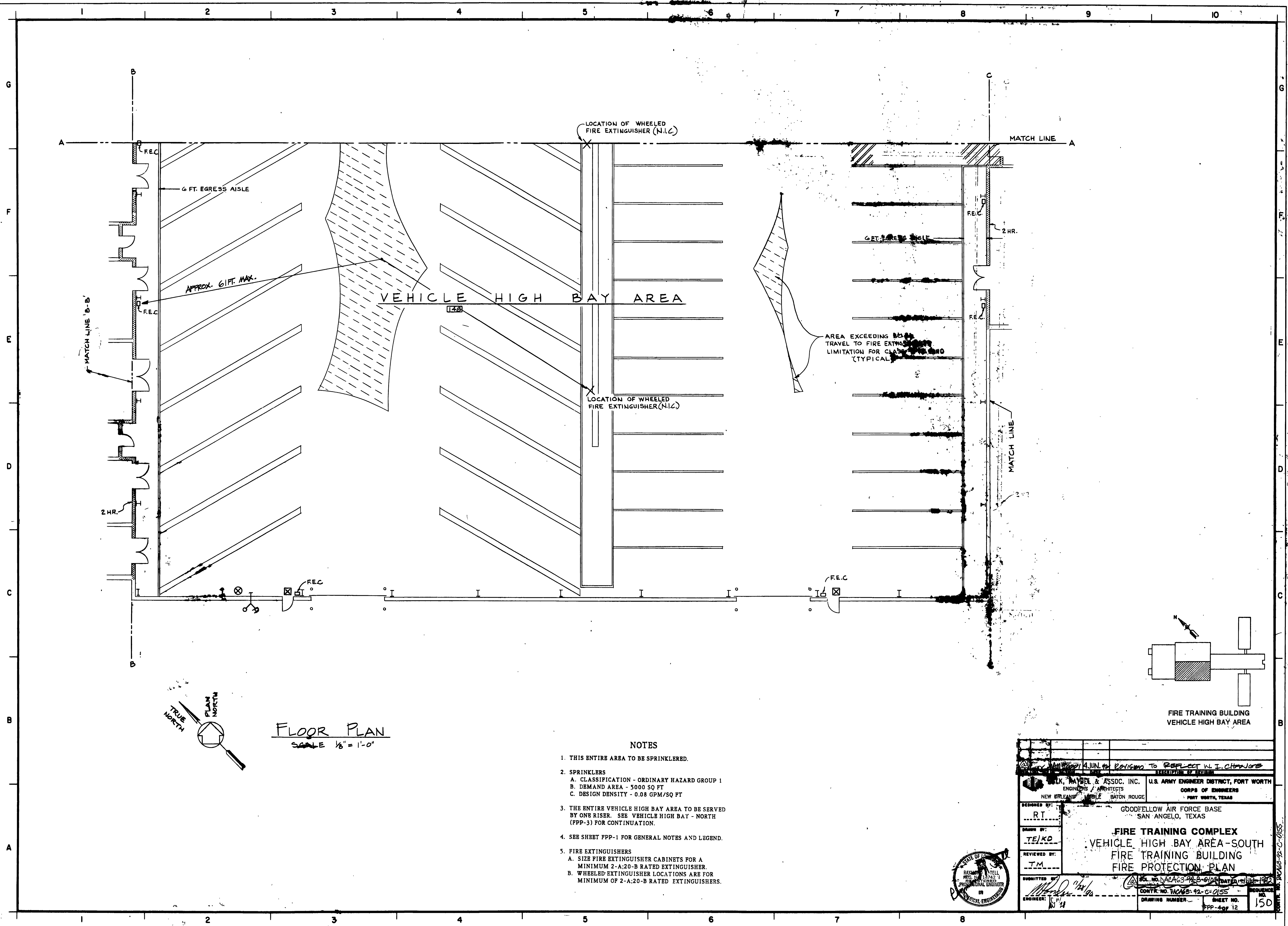
NOTES

1. THIS ENTIRE AREA TO BE SPRINKLERED.
2. SPRINKLERS
A. CLASSIFICATION - ORDINARY HAZARD GROUP 1
B. DEMAND AREA - 5000 SQ FT
C. DESIGN DENSITY - 0.08 GPM/SQ FT
3. THE ENTIRE VEHICLE HIGH BAY AREA TO BE SERVED BY ONE RISER. SEE VEHICLE HIGH BAY - NORTH (FPP-4) FOR CONTINUATION.
4. SEE SHEET FPP-1 FOR GENERAL NOTES AND LEGEND.
5. FIRE EXTINGUISHERS
A. SIZE FIRE EXTINGUISHER CABINETS FOR A MIN. MUM 2-A;20-B RATED EXTINGUISHER.
B. WHEELED EXTINGUISHER LOCATIONS ARE FOR MINIMUM OF 2-A;20-B RATED EXTINGUISHERS.



WALK, HAYDEL & ASSOC. INC. ENGINEERS / ARCHITECTS DUBLAND, MOBILE BATON ROUGE		U.S. ARMY ENGINEER DISTRICT, FORT WORTH CORPS OF ENGINEERS FORT WORTH, TEXAS	
DESIGNED BY: RT		GOODFELLOW AIR FORCE BASE SAN ANGELO, TEXAS	
CHECKED BY: TELKO		FIRE TRAINING COMPLEX VEHICLE HIGH BAY AREA-NORTH FIRE TRAINING BUILDING FIRE PROTECTION PLAN	
SUBMITTED BY: [Signature]		CONTRACT NO. DACW33-92-C-0155	
DRAWING NUMBER: FPP-SPF 12		SHEET NO. 129	

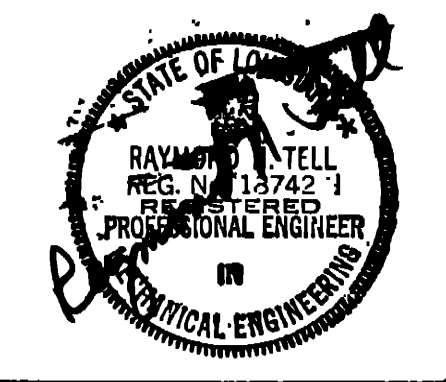
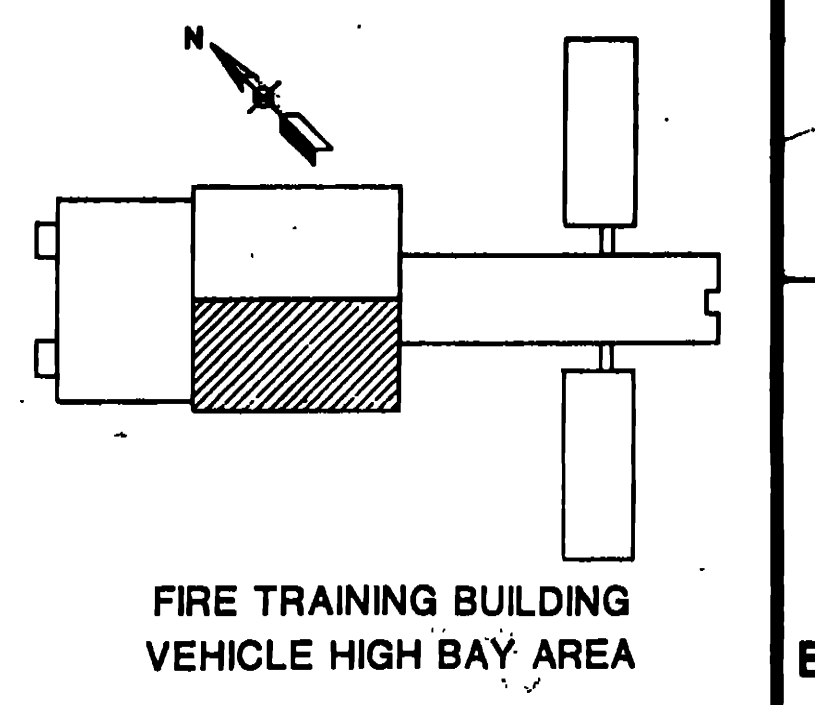
16



FLOOR PLAN
SCALE 1/8" = 1'-0"

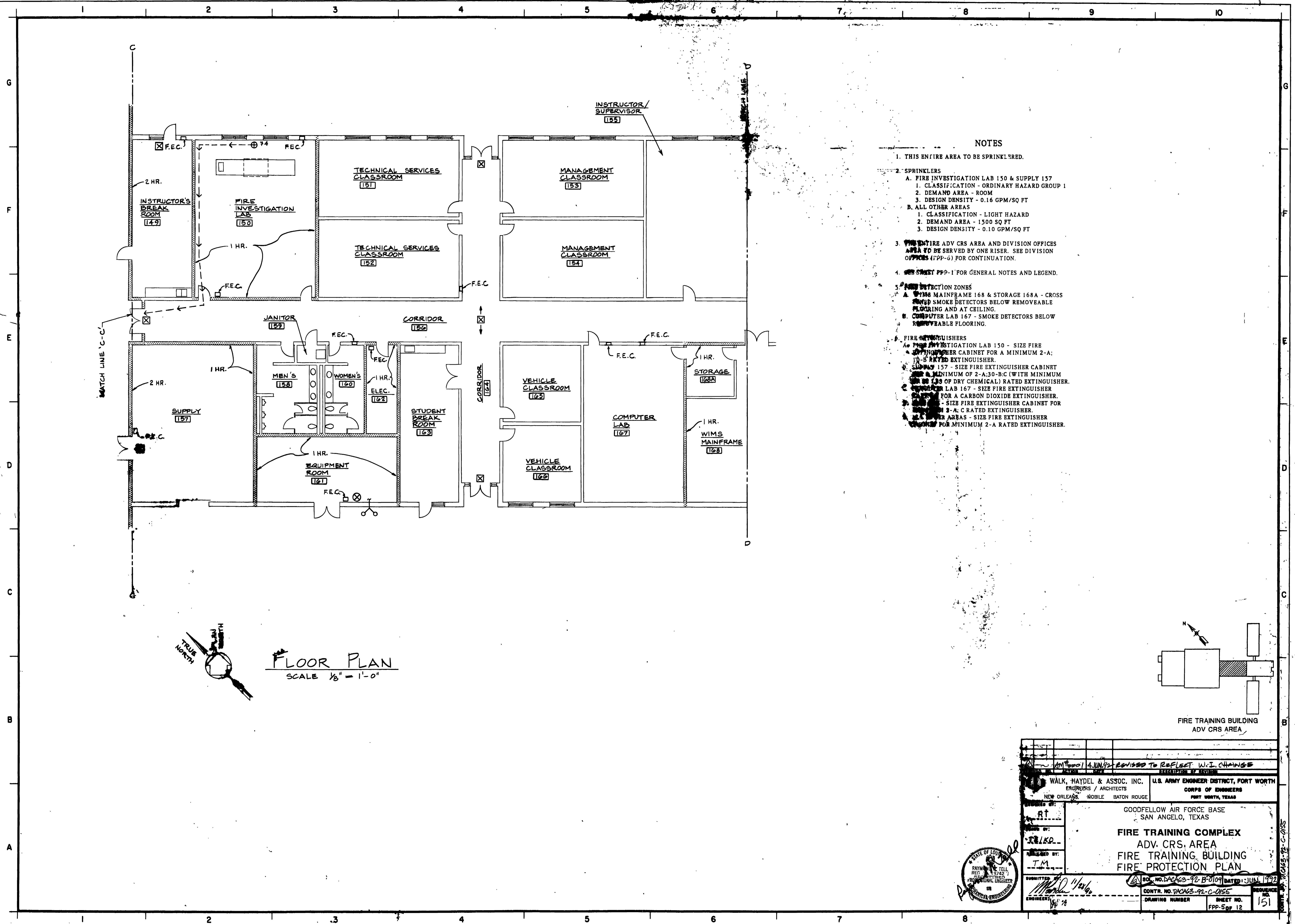
NOTES

1. THIS ENTIRE AREA TO BE SPRINKLERED.
2. SPRINKLERS
 - A. CLASSIFICATION - ORDINARY HAZARD GROUP 1
 - B. DEMAND AREA - 5000 SQ FT
 - C. DESIGN DENSITY - 0.08 GPM/SQ FT
3. THE ENTIRE VEHICLE HIGH BAY AREA TO BE SERVED BY ONE RISER. SEE VEHICLE HIGH BAY - NORTH (PPP-3) FOR CONTINUATION.
4. SEE SHEET PPP-1 FOR GENERAL NOTES AND LEGEND.
5. FIRE EXTINGUISHERS
 - A. SIZE FIRE EXTINGUISHER CABINETS FOR A MINIMUM 2-A-20-B RATED EXTINGUISHER.
 - B. WHEELED-EXTINGUISHER LOCATIONS ARE FOR MINIMUM OF 2-A-20-B RATED EXTINGUISHERS.

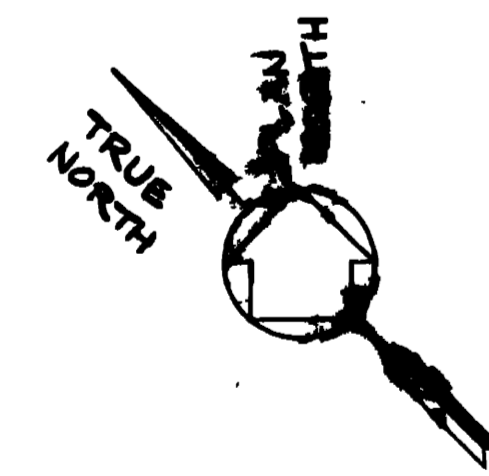


ENGINEERS & ARCHITECTS NEW ORLEANS, MOBILE, BATON ROUGE		U.S. ARMY ENGINEER DISTRICT, FORT WORTH CORPS OF ENGINEERS FORT WORTH, TEXAS	
DESIGNED BY: RT	GOODFELLOW AIR FORCE BASE SAN ANGELO, TEXAS		
DRAWN BY: TE/KO	FIRE TRAINING COMPLEX VEHICLE HIGH BAY AREA-SOUTH FIRE TRAINING BUILDING FIRE PROTECTION PLAN		
REVIEWED BY: J.M.	CONTRACT NO. W065-92-C-0155 SHEET NO. 150 DRAWING NUMBER PPP-4 of 12		
SUBMITTED BY: [Signature]	DATE: JUN 1992		

2L



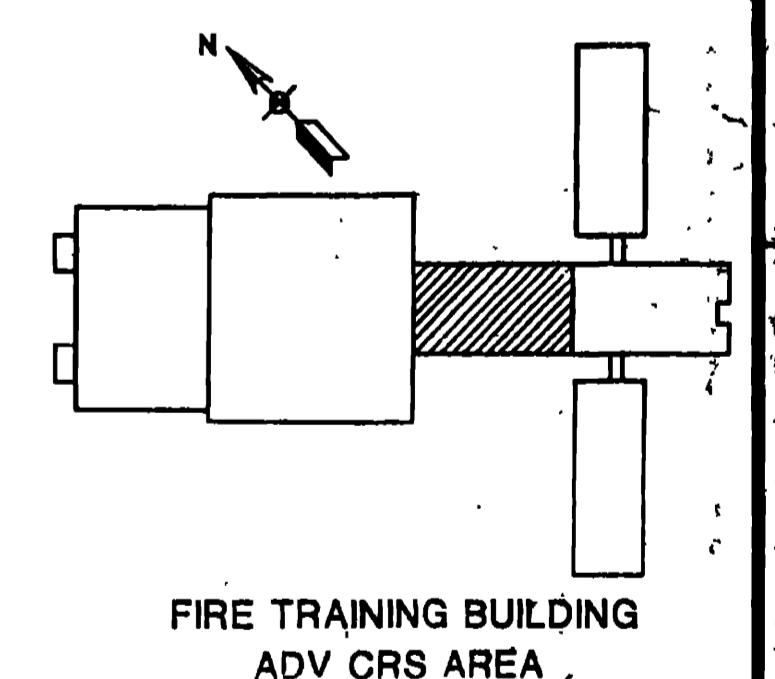
MATCH LINE 'C-C'



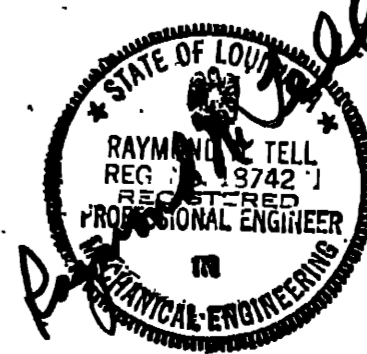
FLOOR PLAN
SCALE 1/8" = 1'-0"

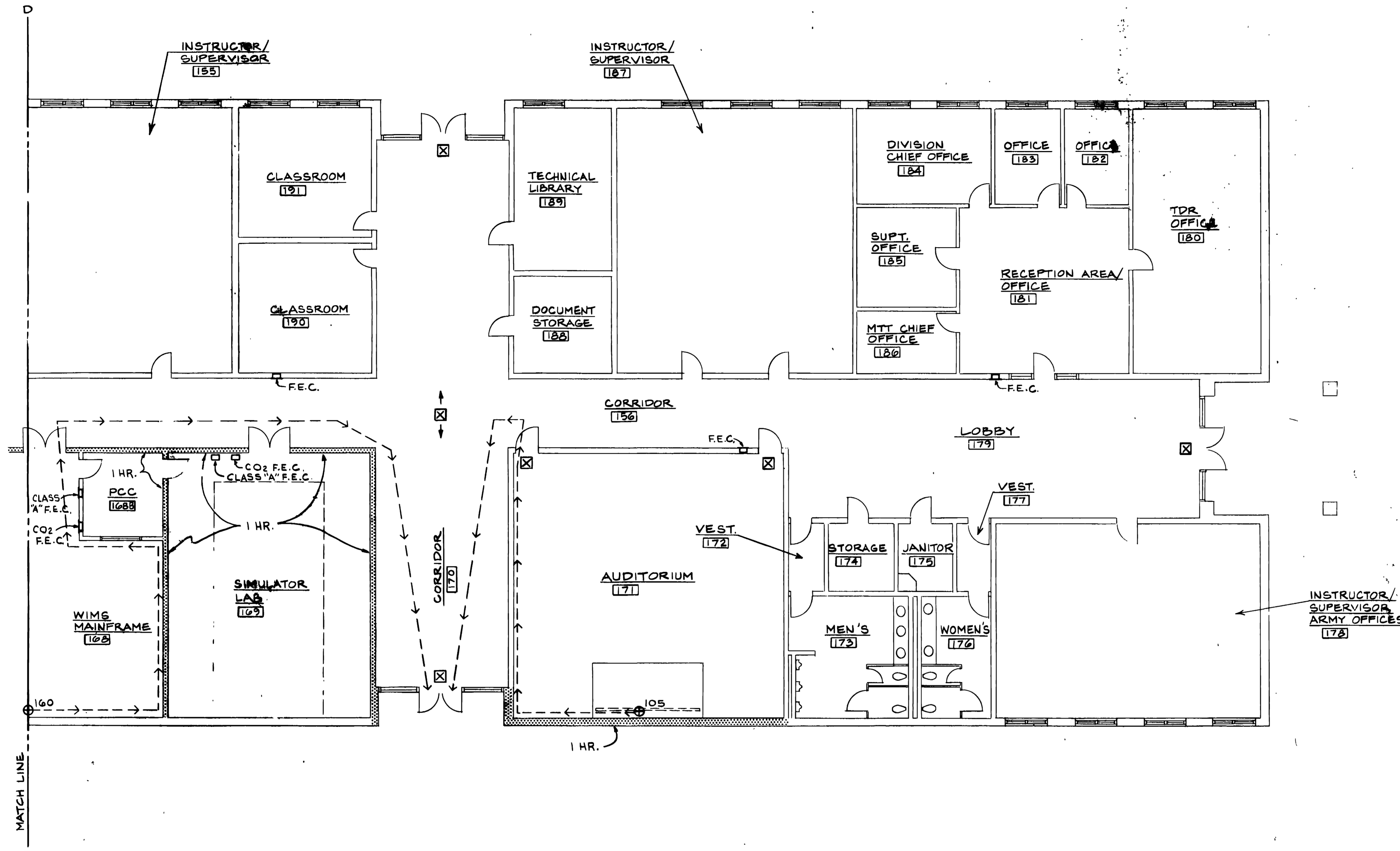
NOTES

1. THIS ENTIRE AREA TO BE SPRINKLERED.
2. SPRINKLERS
 - A. FIRE INVESTIGATION LAB 150 & SUPPLY 157
 1. CLASSIFICATION - ORDINARY HAZARD GROUP 1
 2. DEMAND AREA - ROOM
 3. DESIGN DENSITY - 0.16 GPM/SQ FT
 - B. ALL OTHER AREAS
 1. CLASSIFICATION - LIGHT HAZARD
 2. DEMAND AREA - 1500 SQ FT
 3. DESIGN DENSITY - 0.10 GPM/SQ FT
3. THE ENTIRE ADV. CRS AREA AND DIVISION OFFICES AREA TO BE SERVED BY ONE RISER. SEE DIVISION OFFICES (177P-6) FOR CONTINUATION.
4. SEE SHEET PFP-1 FOR GENERAL NOTES AND LEGEND.
5. FIRE DETECTION ZONES
 - A. WIMS MAINFRAME 168 & STORAGE 168A - CROSS SMOKE DETECTORS BELOW REMOVEABLE FLOORING AND AT CEILING.
 - B. COMPUTER LAB 167 - SMOKE DETECTORS BELOW REMOVEABLE FLOORING.
6. FIRE EXTINGUISHERS
 - A. FIRE INVESTIGATION LAB 150 - SIZE FIRE EXTINGUISHER CABINET FOR A MINIMUM 2-A; 10-B RATED EXTINGUISHER.
 - B. SUPPLY 157 - SIZE FIRE EXTINGUISHER CABINET FOR A MINIMUM OF 2-A,30-B-C (WITH MINIMUM 10-B OF DRY CHEMICAL) RATED EXTINGUISHER.
 - C. COMPUTER LAB 167 - SIZE FIRE EXTINGUISHER CABINET FOR A CARBON DIOXIDE EXTINGUISHER.
 - D. STORAGE 168A - SIZE FIRE EXTINGUISHER CABINET FOR A 2-A, C RATED EXTINGUISHER.
 - E. WIMS MAINFRAME 168 - SIZE FIRE EXTINGUISHER CABINET FOR A MINIMUM 2-A RATED EXTINGUISHER.



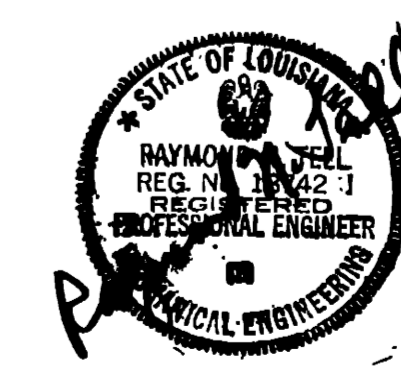
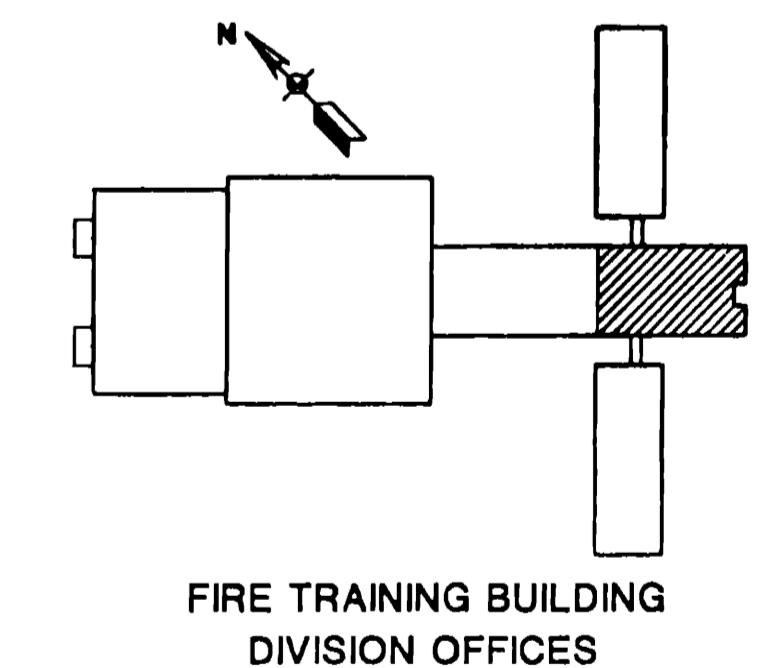
WALK, HAYDEL & ASSOC. INC. ENGINEERS / ARCHITECTS NEW ORLEANS, MOBILE, BATON ROUGE		U.S. ARMY ENGINEER DISTRICT, FORT WORTH CORPS OF ENGINEERS FORT WORTH, TEXAS	
GOODFELLOW AIR FORCE BASE SAN ANGELO, TEXAS			
FIRE TRAINING COMPLEX ADV. CRS. AREA FIRE TRAINING BUILDING FIRE PROTECTION PLAN			
SUBMITTED BY: <i>[Signature]</i> ENGINEER: <i>[Signature]</i>		DATE: JUN 1992 SHEET NO. 151	



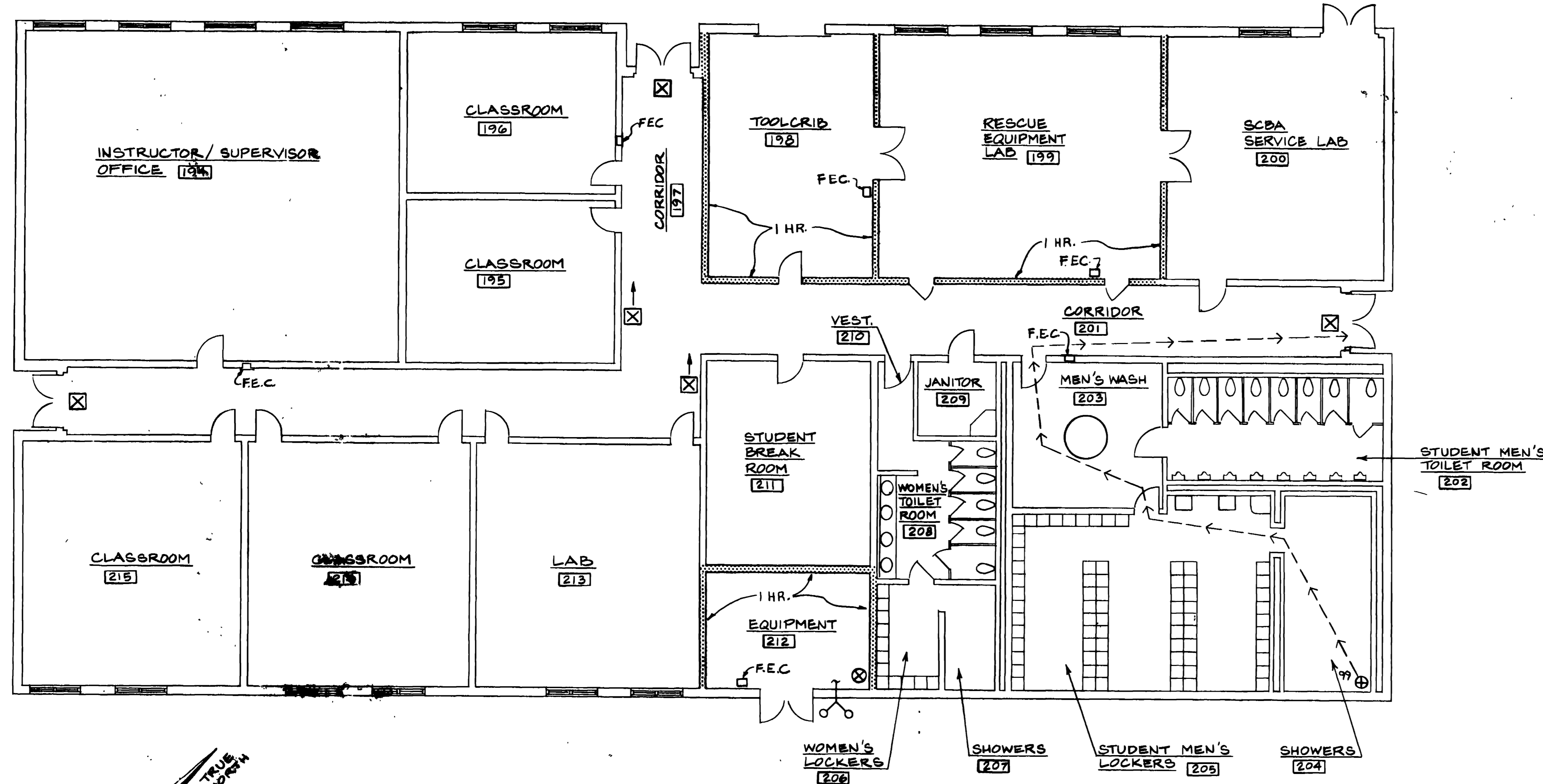


- NOTES**
1. THIS ENTIRE AREA TO BE SPRINKLERED.
 2. SPRINKLERS:
 - A. CLASSIFICATION - LIGHT HAZARD
 - B. DEMAND AREA - 1500 SQ FT
 - C. DESIGN DENSITY - 0.10 GPM/SQ FT
 3. SPRINKLER SYSTEM IN SIMULATOR LAB 169 TO BE PRE-ACTION TYPE.
 4. THE ENTIRE DIVISION OFFICES AREA AND ADV CRS AREA TO BE SERVED BY ONE RISER. SEE ADV CRS (PPP-5) FOR CONTINUATION.
 5. FIRE DETECTION ZONES:
 - A. WIMS MAINFRAME 168 & PCC 168B - CROSS ZONED SMOKE DETECTORS BELOW THE REMOVABLE FLOOR AND AT CEILING.
 - B. SIMULATOR LAB 169
 - 1. CROSS ZONED SMOKE DETECTORS AT CEILING
 - 2. HEAT DETECTORS AT CEILING TO ACTIVATE PRE-ACTION VALVE.
 6. FIRE EXTINGUISHERS:
 - A. WIMS MAINFRAME 168 & SIMULATOR LAB 169 - SIZE ONE FIRE EXTINGUISHER CABINET FOR AT LEAST A 2-A RATED EXTINGUISHER. SIZE THE OTHER FOR A CARBON DIOXIDE FIRE EXTINGUISHER.
 - B. ALL OTHER AREAS - SIZE FIRE EXTINGUISHER CABINETS FOR AT LEAST A 2-A RATED EXTINGUISHER.
 7. SEE SHEET PPP-1 FOR GENERAL NOTES AND LEGEND.

TRUE NORTH
 PLAN NORTH
FLOOR PLAN
 SCALE 1/8" = 1'-0"



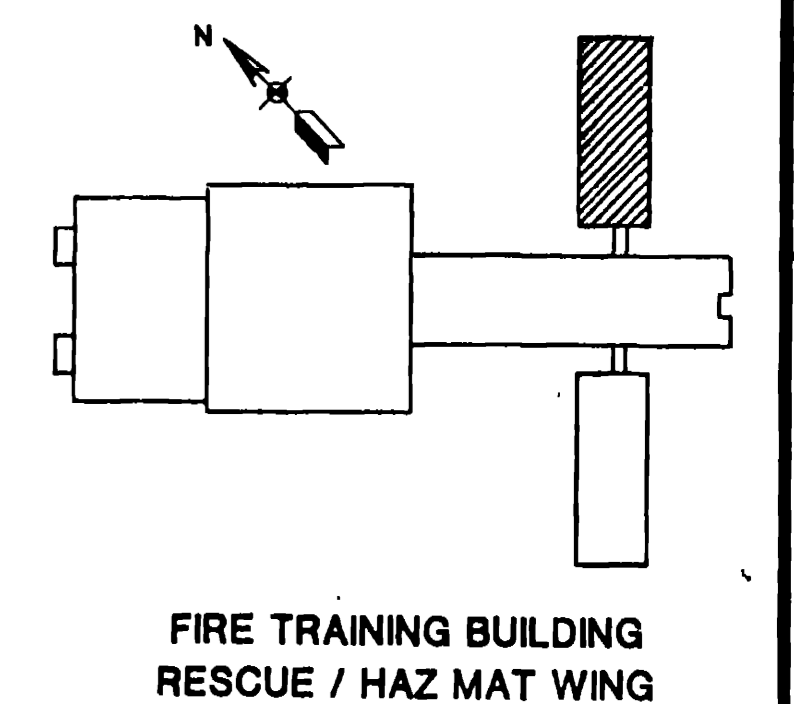
WALK, HAYDEL & ASSOC. INC. ENGINEERS / ARCHITECTS NEW ORLEANS MOBILE BATON ROUGE		U.S. ARMY ENGINEER DISTRICT, FORT WORTH CORPS OF ENGINEERS FORT WORTH, TEXAS	
DESIGNED BY: RT DRAWN BY: TE/KO REVIEWED BY: TM			
GOODFELLOW AIR FORCE BASE SAN ANGELO, TEXAS		SO. NO. DACAG3-92B-0109 DATED: JUN. 1992 CONTR. NO. DACNB-92-C-0155	
FIRE TRAINING COMPLEX DIVISION OFFICES AREA FIRE TRAINING BUILDING FIRE PROTECTION PLAN		SHEET NO. 152 DRAWING NUMBER FPP-667 12	



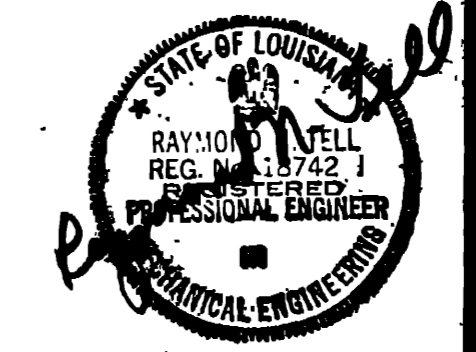
FLOOR PLAN
 SCALE 1/8" = 1'-0"

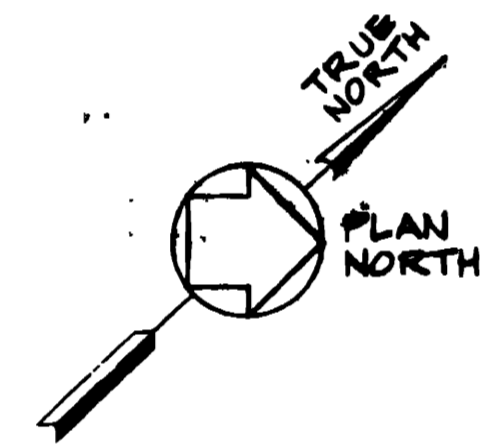
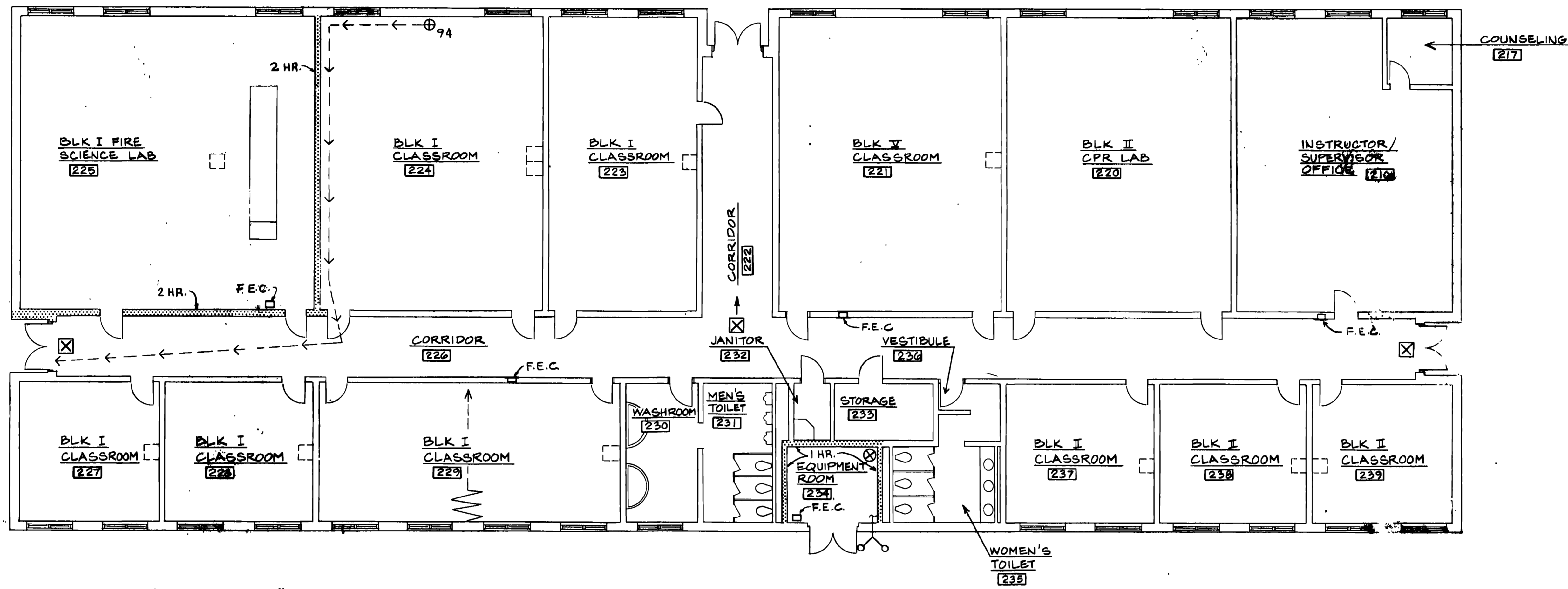
NOTES

1. THIS ENTIRE BUILDING TO BE SPRINKLERED.
2. SPRINKLERS
 - A. TOOL CRIB 198 & RESCUE EQUIPMENT LAB 199
 1. CLASSIFICATION - ORDINARY GROUP 1
 2. DEMAND AREA - ROOM
 3. DESIGN DENSITY - 0.16 GPM/SQ FT
 - B. ALL OTHER AREAS
 1. CLASSIFICATION - LIGHT HAZARD
 2. DEMAND AREA - 1500 SQ FT
 3. DESIGN DENSITY - 0.10 GPM/SQ FT
3. SEE SHEET FPP-1 FOR GENERAL NOTES AND LEGEND.
4. FIRE EXTINGUISHERS
 - A. TOOL CRIB 198 & RESCUE EQUIPMENT LAB 199
 - SIZE FIRE EXTINGUISHER CABINETS FOR A MINIMUM 2-A:30-B:C (WITH MINIMUM OF 20 LBS OF DRY CHEMICAL) RATED EXTINGUISHER.
 - B. EQUIPMENT 212 - SIZE FIRE EXTINGUISHER CABINETS FOR A MINIMUM 2-A:C RATED EXTINGUISHER.
 - C. ALL OTHER AREAS - SIZE FIRE EXTINGUISHER CABINETS FOR A MINIMUM 2-A RATED EXTINGUISHER.



WALK, HAYDEL & ASSOC. INC. ENGINEERS / ARCHITECTS NEW ORLEANS MOBILE BATON ROUGE		U.S. ARMY ENGINEER DISTRICT, FORT WORTH CORPS OF ENGINEERS FORT WORTH, TEXAS	
DESIGNED BY: RT		GOODFELLOW AIR FORCE BASE SAN ANGELO, TEXAS	
DRAWN BY: TELKD		FIRE TRAINING COMPLEX RESCUE/HAZARDOUS MATERIALS WING FIRE TRAINING BUILDING FIRE PROTECTION PLAN	
REVIEWED BY: IM		SUBMITTED BY: M. W. Haydel	
ENGINEER: M. W. Haydel		CONTR. NO. DACAG3-92B-0109 DATED: JUN. 1992 SHEET NO. 153 FPP-7 OF 12	

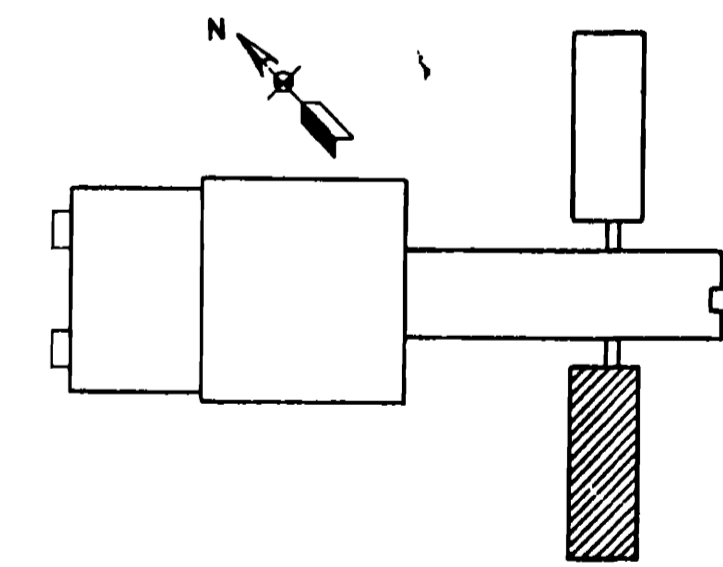




FLOOR PLAN
SCALE 1/8" = 1'-0"

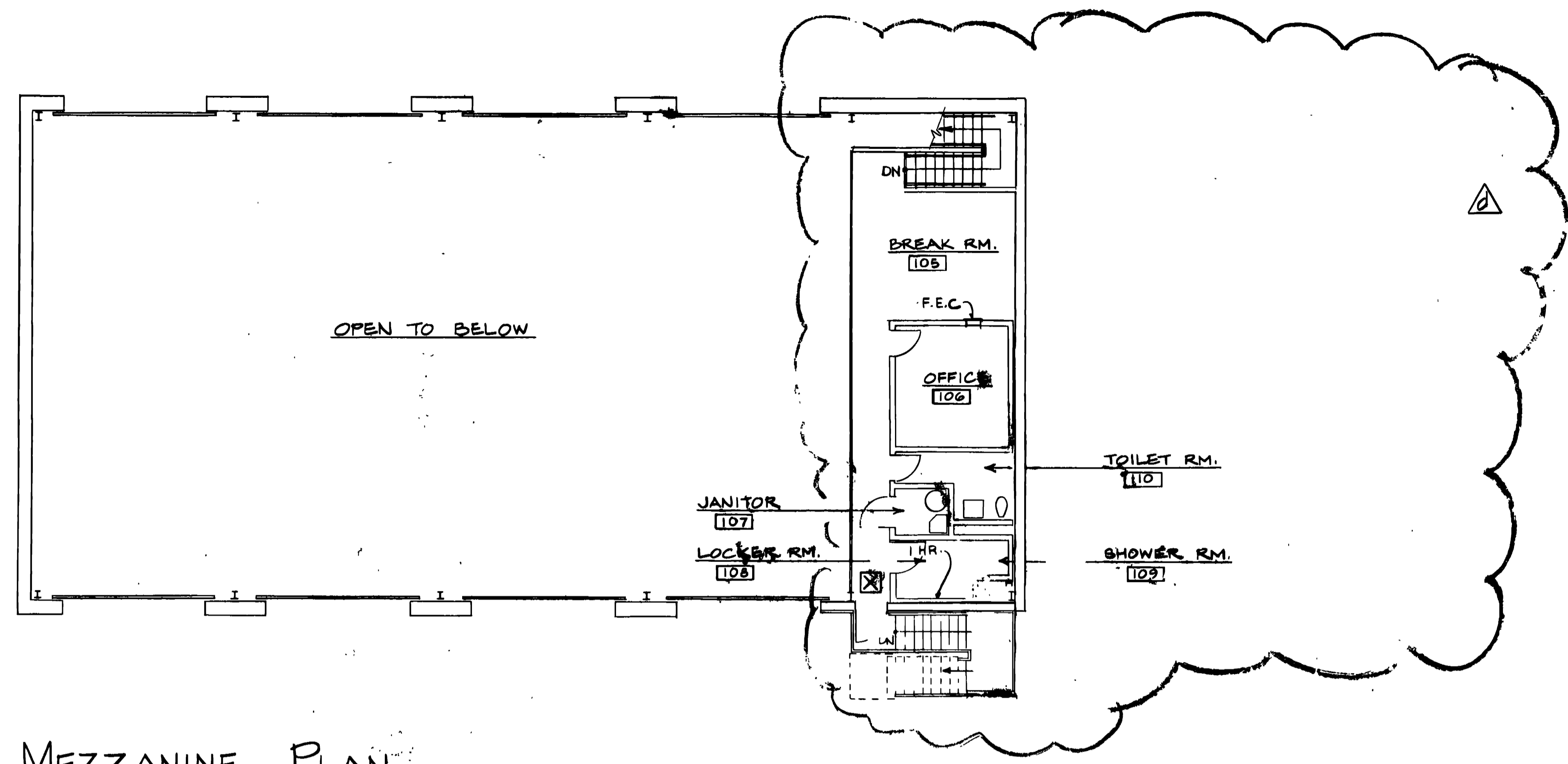
NOTES

1. THIS ENTIRE BUILDING TO BE SPRINKLERED.
2. SPRINKLERS
 - A. BLK I FIRE SCIENCE LAB 225
 1. CLASSIFICATION - ORDINARY GROUP 1
 2. DEMAND AREA - ROOM
 3. DESIGN DENSITY - 0.16 GPM/SQ FT
 - B. ALL OTHER AREAS
 1. CLASSIFICATION - LIGHT HAZARD
 2. DEMAND AREA - 1500 SQ FT
 3. DESIGN DENSITY - 0.10 GPM/SQ FT
3. SEE SHEET FPP-1 FOR GENERAL NOTES AND LEGEND.
4. FIRE EXTINGUISHERS
 - A. EQUIPMENT ROOM 234 - SIZE FIRE EXTINGUISHER CABINET FOR A MINIMUM 2-A; C RATED EXTINGUISHER.
 - B. BLK I FIRE SCIENCE LAB 225 - SIZE FIRE EXTINGUISHER CABINET FOR A MINIMUM 2-A; 10-B RATED EXTINGUISHER.
 - C. ALL OTHER AREAS - SIZE FIRE EXTINGUISHER CABINETS FOR A MINIMUM 2-A RATED EXTINGUISHER.



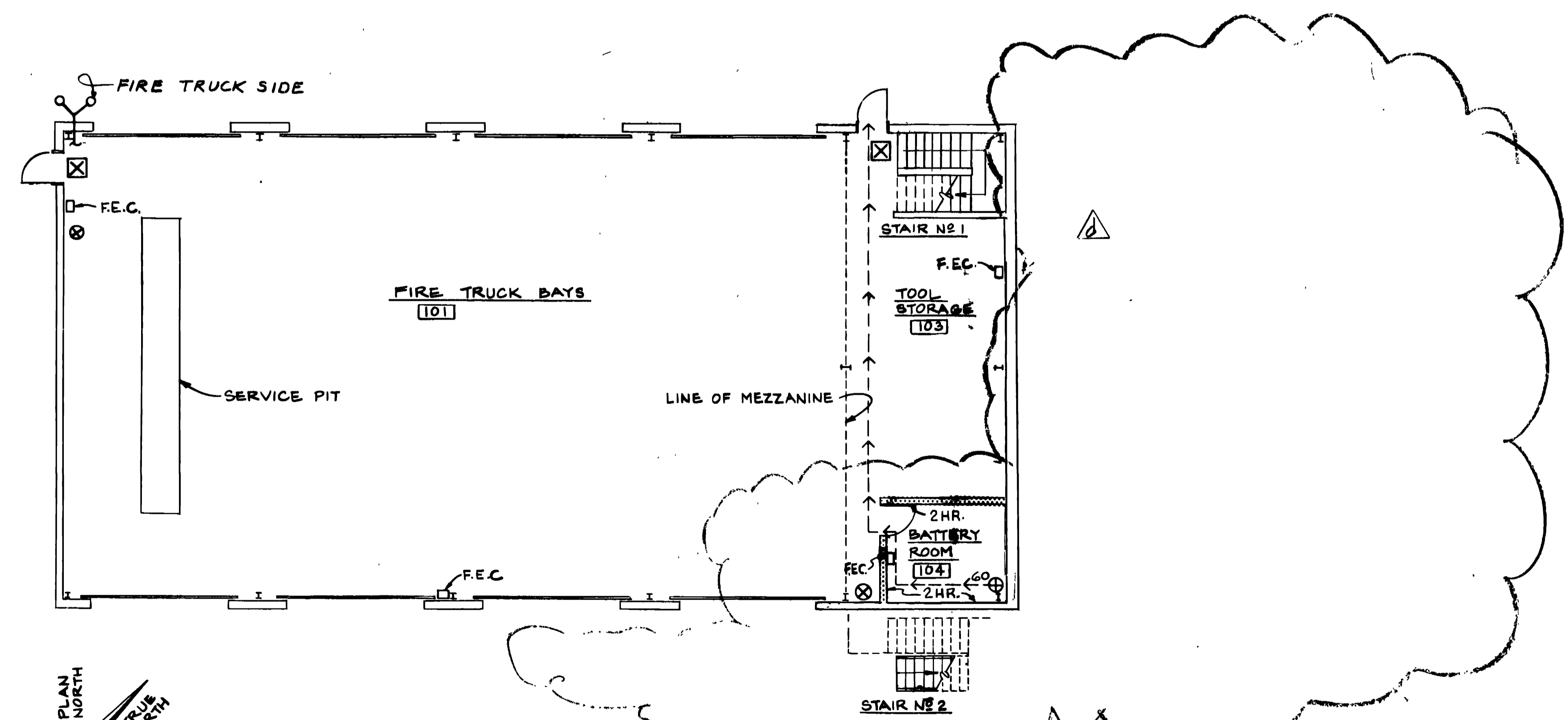
FIRE TRAINING BUILDING
BASIC COURSES WING

WALK, HAYDEL & ASSOC. INC. ENGINEERS / ARCHITECTS NEW ORLEANS MOBILE BATON ROUGE		U.S. ARMY ENGINEER DISTRICT, FORT WORTH CORPS OF ENGINEERS FORT WORTH, TEXAS	
DESIGNED BY: RT	GOODFELLOW AIR FORCE BASE SAN ANGELO, TEXAS		
DRAWN BY: TELKO	FIRE TRAINING COMPLEX BASIC COURSES WING FIRE TRAINING BUILDING FIRE PROTECTION PLAN		
REVIEWED BY: TM			
SUBMITTED BY: 	CONTA. NO. DAC63-92-B-0109 DATED JUN 1992	DRAWING NUMBER FPP-09 12	SHEET NO. 154



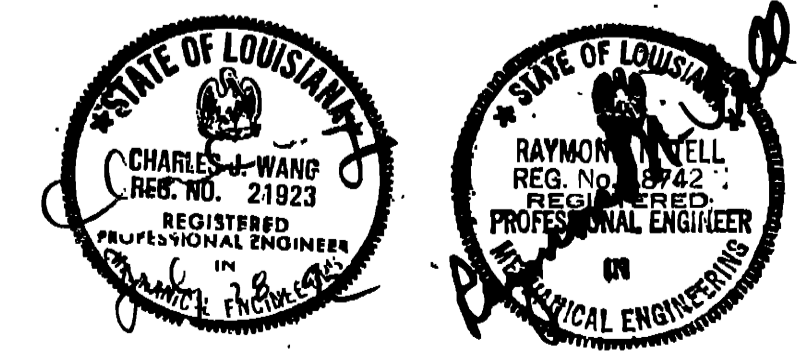
MEZZANINE PLAN
SCALE 1/8" = 1'-0"

- NOTES**
- THIS ENTIRE AREA TO BE SPRINKLERED.
 -
 - SPRINKLERS
 - A CLASSIFICATION - ORDINARY HAZARD GROUP 3
 - B DEMAND AREAS
 - a. BATTERY ROOM 104 - ROOM
 - b. REMAINING AREAS - 5000 SQ FT
 - C DESIGN DENSITY
 - a. BATTERY ROOM 104 - 0.21 GPM/SQ FT
 - b. REMAINING AREAS - 0.15 GPM/SQ FT
 - FIRE DETECTION ZONES - FUELS TRUCK BAYS 102 SHALL HAVE HEAT DETECTORS TO ACTIVATE DELUGE VALVE.
 - ELECTRICAL CLASSIFICATION
 - A. FIRE TRUCK BAYS .01
 - 1. AREAS BELOW GRADE - CLASS I DIVISION 1 GROUP D
 - 2. AREAS UP TO 18' ABOVE GRADE - CLASS I DIVISION 2 GROUP D
 - FIRE EXTINGUISHERS
 - A. BATTERY ROOM 104 - SIZE FIRE EXTINGUISHER CABINET FOR A MINIMUM 2-A; C RATED EXTINGUISHER.
 - B. BREAK ROOM 105 - SIZE FIRE EXTINGUISHER CABINET FOR A MINIMUM 2-A RATED EXTINGUISHER.
 - C. ALL OTHER AREAS - SIZE FIRE EXTINGUISHER CABINETS FOR A MINIMUM 2-A;40-B RATED EXTINGUISHER.
 - SEE SHEET FPP-1 FOR GENERAL NOTES AND LEGEND.

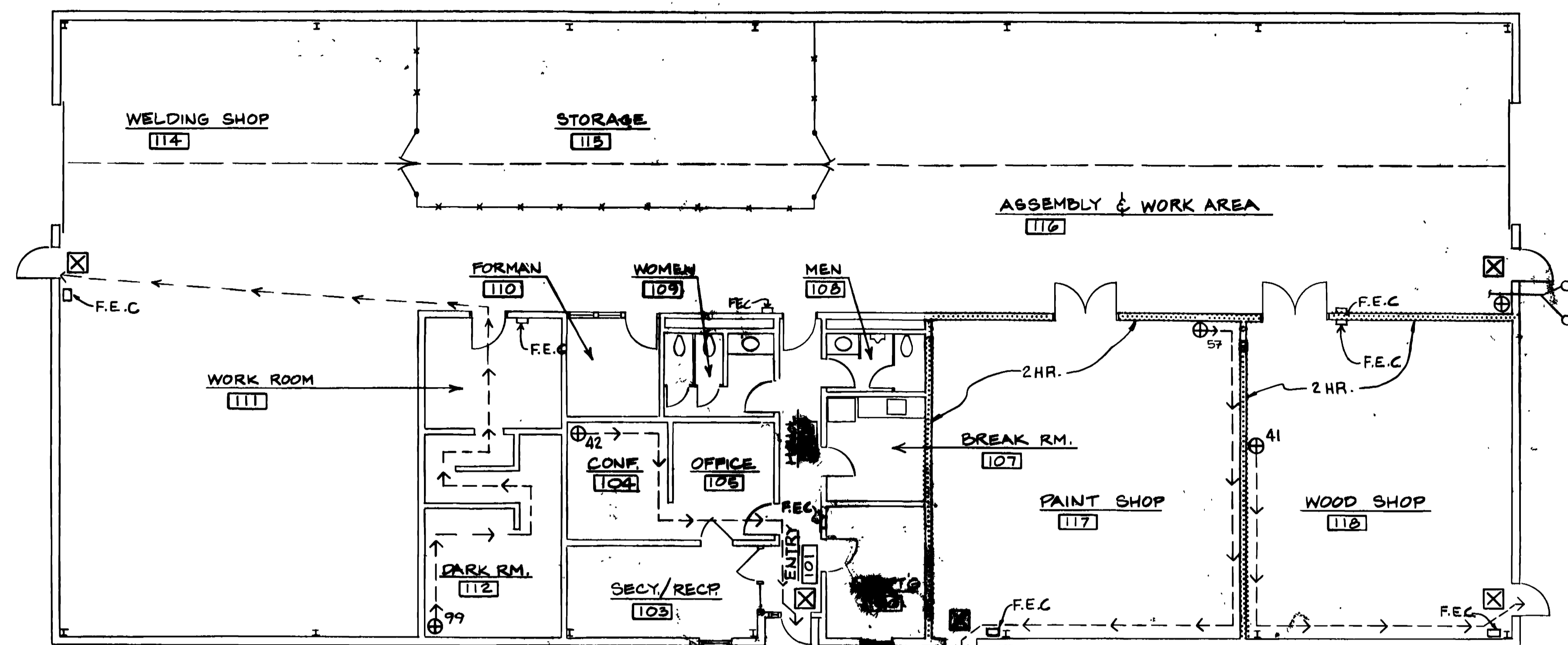


FIRST FLOOR PLAN
SCALE 1/8" = 1'-0"

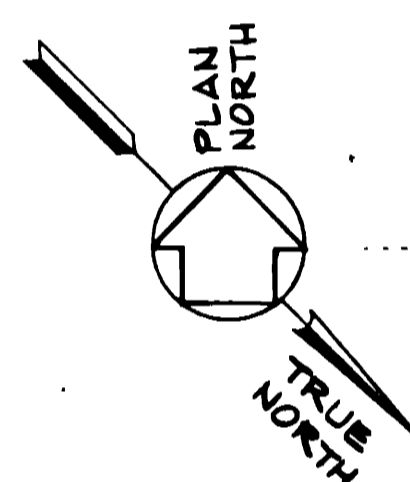
AM 10/20/92 DELETED FUELS TRUCK BAYS	
AM 11/01/92 REVISED TO REFLECT W.T. CHANGE	
WALK, HAYDEL & ASSOC. INC. U.S. ARMY ENGINEER DISTRICT, FORT WORTH ENGINEERS / ARCHITECTS CORPS OF ENGINEERS NEW ORLEANS MOBILE BATON ROUGE FORT WORTH, TEXAS	
DESIGNED BY: RT	GOODFELLOW AIR FORCE BASE SAN ANGELO, TEXAS
DRAWN BY: TEL/KD	FIRE TRAINING COMPLEX VEHICLE MAINTENANCE FACILITY
REVIEWED BY: T.M.	FIRE PROTECTION PLAN
ENGINEER: [Signature]	SOL. NO. DAC 63-92-B-0109 DATED: JUN. 1992
CONTR. NO. DAC 63-92-C-0155	SEQUENCE NO. 155
DRAWING NUMBER	SHEET NO. FPP-9 of 12



PORTAL NO. DAC 63-92-C-0155



NOTE:
 PROVIDE FIRE EXTINGUISHER CABINET
 FOR 2-A; C RATED EXTINGUISHER
 AT EQUIPMENT AREA ABOVE OFFICE
 AREA

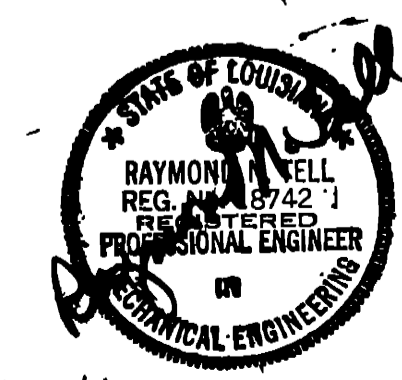


FLOOR PLAN
 SCALE 1/8" = 1'-0"

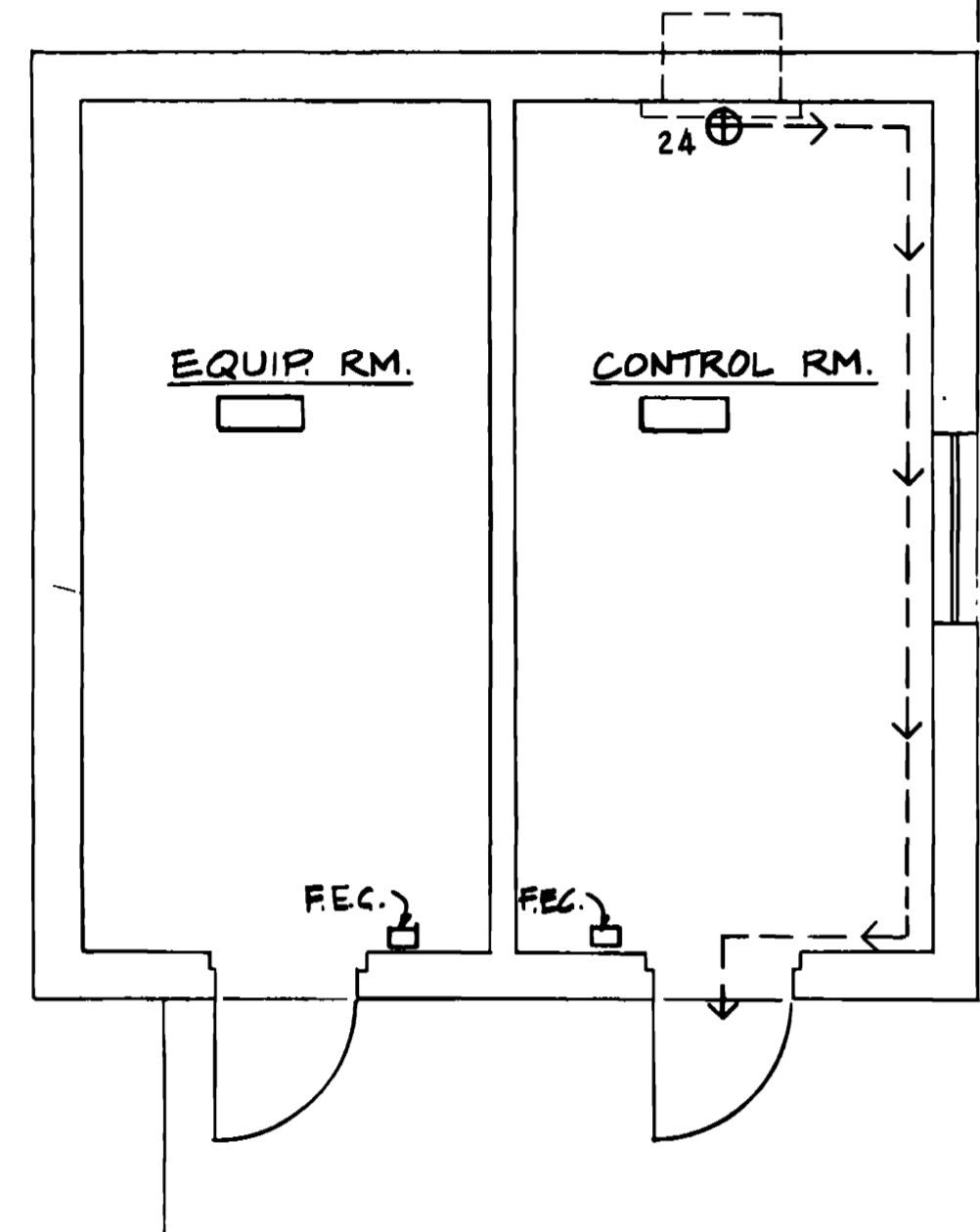
NOTES

1. THIS ENTIRE BUILDING TO BE SPRINKLERED.
2. SPRINKLERS:
 - A. PAINT SHOP 117
 1. CLASSIFICATION - EXTRA HAZARD GROUP 2
 2. DEMAND AREA - ROOM
 3. DESIGN DENSITY - 0.37 GPM/SQ FT
 - B. WOOD SHOP 118
 1. CLASSIFICATION - ORDINARY HAZARD GROUP 3
 2. DEMAND AREA - ROOM
 3. DESIGN DENSITY - 0.21 GPM/SQ FT
 - C. WELDING SHOP 114, STORAGE 115, AND ASSEMBLY & WORK AREA 116
 1. CLASSIFICATION - ORDINARY GROUP 2
 2. DEMAND AREA - 5000 SQ FT
 3. DESIGN DENSITY - 0.12 GPM/SQ FT
 - D. REMAINING AREAS
 1. CLASSIFICATION - LIGHT HAZARD
 2. DEMAND AREA - 1500 SQ FT
 3. DESIGN DENSITY - 0.10 GPM/SQ FT
3. ELECTRICAL CLASSIFICATION
 - A. PAINT SHOP 117
 1. WITHIN THE OPEN FRONT OF THE SPRAY BOOTH - CLASS I AND CLASS II DIVISION 1
 2. WITHIN 10 FT RADIUS OF THE OPEN FRONT OF THE SPRAY BOOTH - CLASS I AND CLASS II DIVISION 2
 3. WITHIN 3 FT RADIUS OF ANY OTHER OPENING OF THE SPRAY BOOTH - CLASS I DIVISION 2 OR CLASS II DIVISION 2
 - B. WOOD SHOP 118
 1. AREAS WITHIN THE WOODWORKING EQUIPMENT - CLASS III DIVISION 1
 2. DUST COLLECTION EQUIPMENT - CLASS II DIVISION 1
4. FIRE EXTINGUISHERS
 - A. WELDING SHOP 114, STORAGE 115, AND ASSEMBLY & WORK AREA 116 - SIZE FIRE EXTINGUISHER CABINETS FOR A MINIMUM 2-A:30-B:C (WITH MINIMUM OF 20 LBS OF DRY CHEMICAL) RATED EXTINGUISHER.
 - B. PAINT SHOP 117 - SIZE FIRE EXTINGUISHER CABINETS FOR A MINIMUM 4-A:40-B RATED EXTINGUISHER.
 - C. WOOD SHOP 118 - SIZE FIRE EXTINGUISHER CABINETS FOR A MINIMUM 4-A RATED EXTINGUISHER.
 - D. ALL OTHER AREAS - SIZE FIRE EXTINGUISHER CABINETS FOR A MINIMUM 2-A RATED EXTINGUISHER.
5. SEE SHEET FPP-1 FOR GENERAL NOTES AND LEGEND.

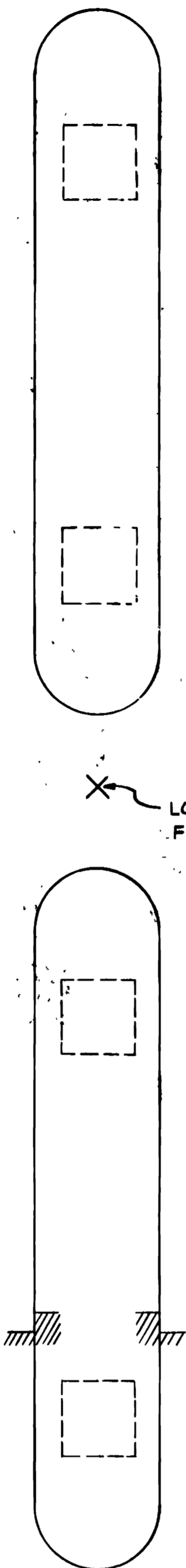
WALK, HAYDEL & ASSOC. INC. ENGINEERS / ARCHITECTS NEW ORLEANS MOBILE BATON ROUGE		U.S. ARMY ENGINEER DISTRICT, FORT WORTH CORPS OF ENGINEERS FORT WORTH, TEXAS	
DESIGNED BY: RT		GOODFELLOW AIR FORCE BASE SAN ANGELO, TEXAS	
DRAWN BY: JEL/KR		FIRE TRAINING COMPLEX TRAINER SERVICES FACILITY BID OPTION NO. 1 FIRE PROTECTION PLAN	
REVIEWED BY: TM			
SUBMITTED BY: [Signature]		DOL. NO. D04068-92B-0109 DATED: JUN. 1992	
ENGINEER: [Signature]		CONTR. NO. D04068-92-C-0155 SHEET NO. FPP-10 OF 12	



CONTINUED ON SHEETS 11, 12, 13, 14, 15, 16, 17, 18, 19, 20, 21, 22, 23, 24, 25, 26, 27, 28, 29, 30, 31, 32, 33, 34, 35, 36, 37, 38, 39, 40, 41, 42, 43, 44, 45, 46, 47, 48, 49, 50, 51, 52, 53, 54, 55, 56, 57, 58, 59, 60, 61, 62, 63, 64, 65, 66, 67, 68, 69, 70, 71, 72, 73, 74, 75, 76, 77, 78, 79, 80, 81, 82, 83, 84, 85, 86, 87, 88, 89, 90, 91, 92, 93, 94, 95, 96, 97, 98, 99, 100



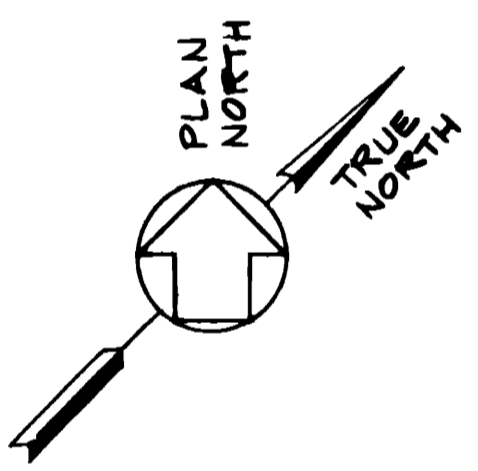
PUMP ISLANDS



LOCATION FOR WHEELED FIRE EXTINGUISHER (N.I.C)

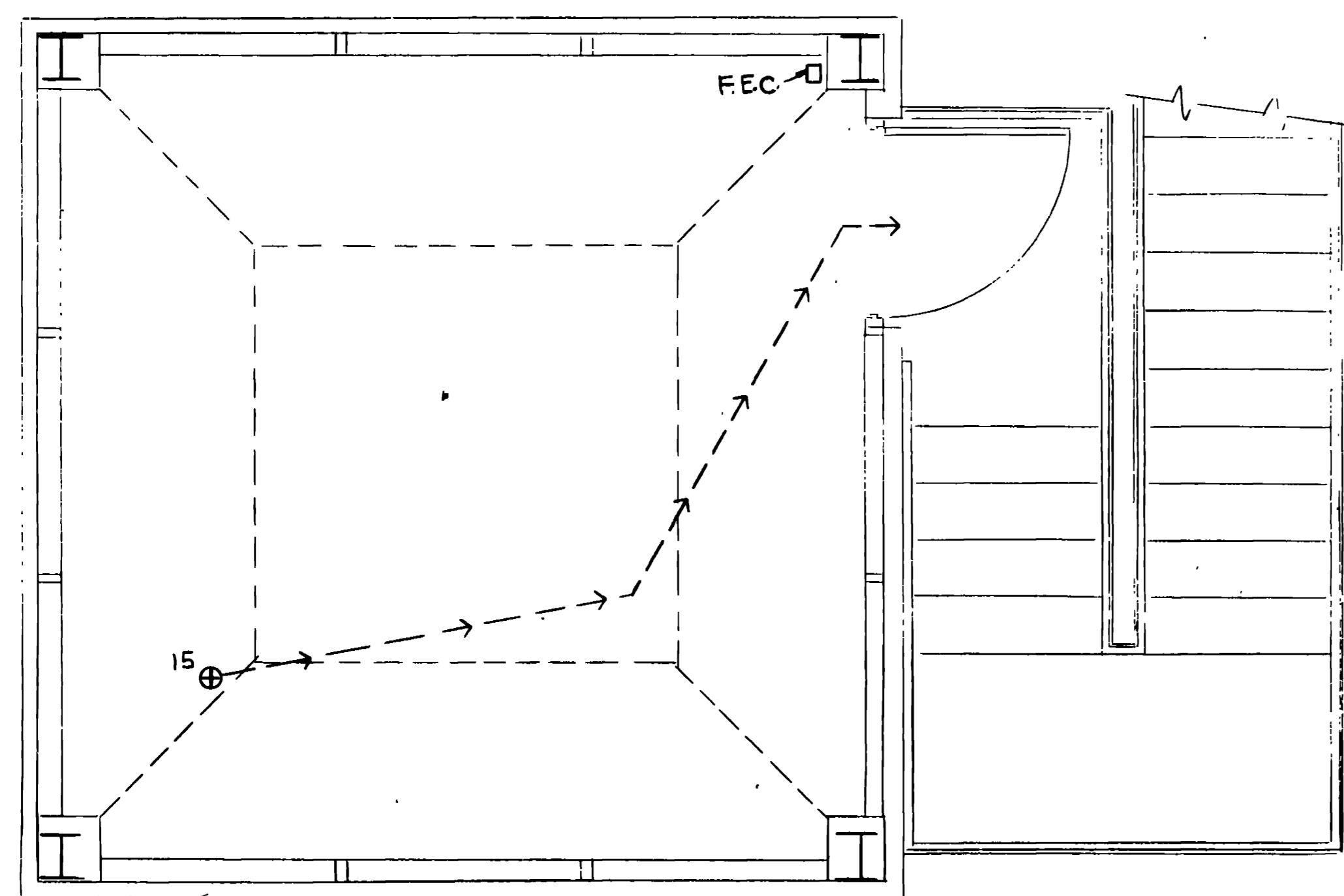
NOTES

1. THIS BUILDING IS NOT SPRINKLERED
 2. FIRE DETECTION ZONES - EACH ROOM WILL HAVE A SMOKE DETECTOR.
 3. FIRE EXTINGUISHERS
 - A. EQUIPMENT ROOM 101 & CONTROL ROOM 102 - SIZE FIRE EXTINGUISHER CABINET FOR A MINIMUM 2-A: C RATED EXTINGUISHER
 - B. WHEELED EXTINGUISHER LOCATION IS FOR MINIMUM 2-A:40-B RATED EXTINGUISHER.
- SEE SHEET FPP-1 FOR GENERAL NOTES AND LEGEND.

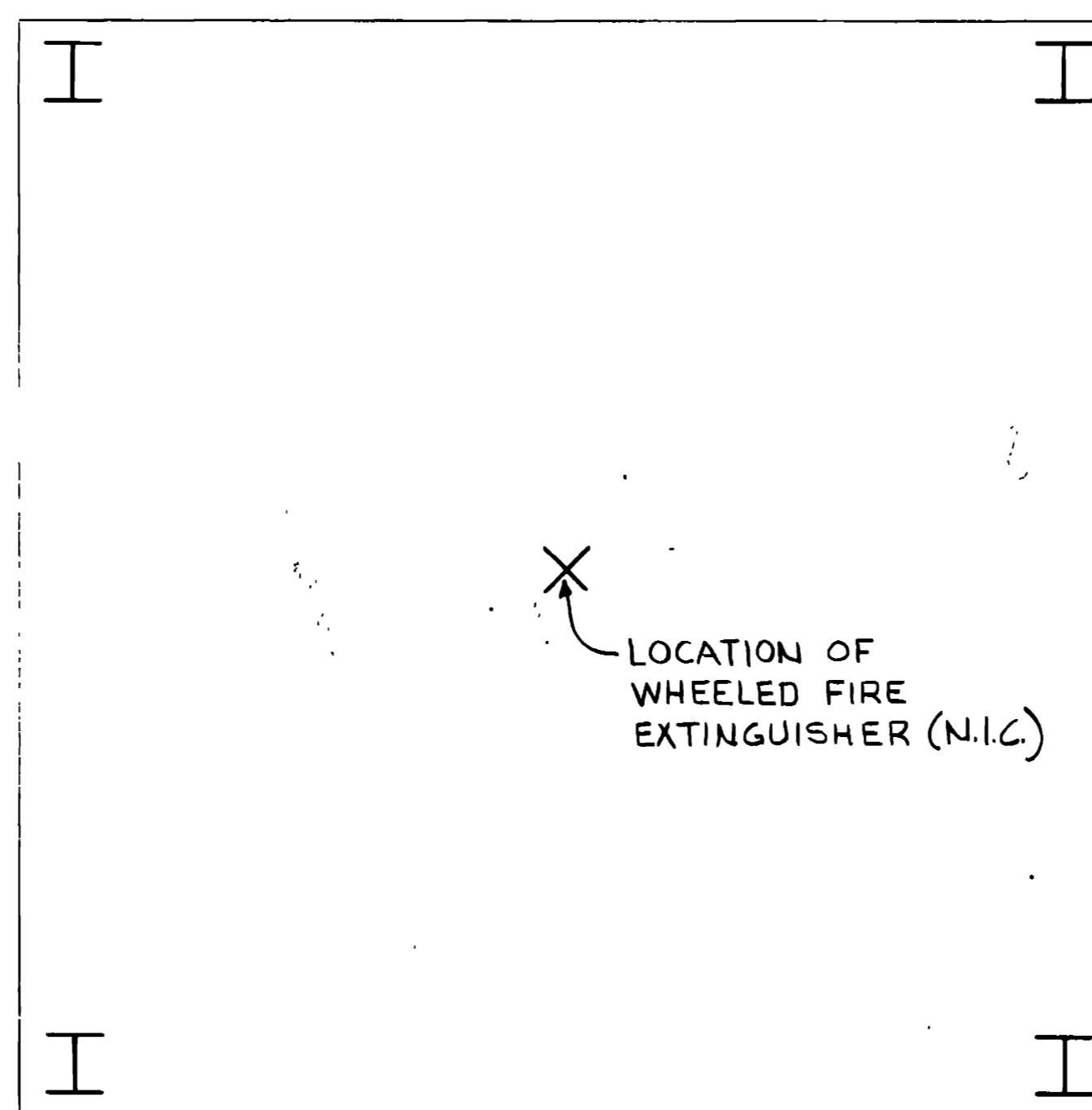


FLOOR PLAN
SCALE 1/4"=1'-0"

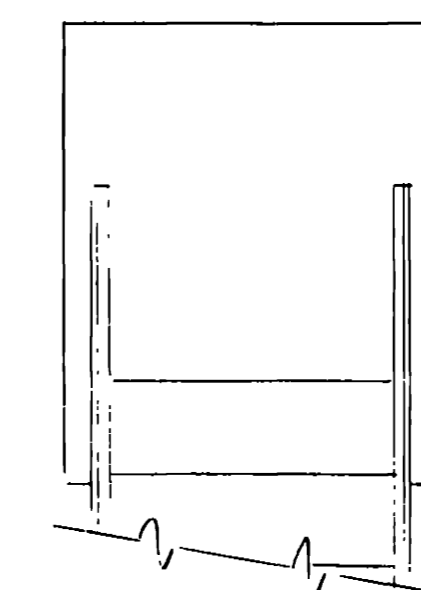
WALK, HAYDEL & ASSOC. INC. ENGINEERS / ARCHITECTS NEW ORLEANS MOBILE BATON ROUGE		U.S. ARMY ENGINEER DISTRICT, FORT WORTH CORPS OF ENGINEERS FORT WORTH, TEXAS	
DESIGNED BY: RT	GOODFELLOW AIR FORCE BASE SAN ANGELO, TEXAS		
DRAWN BY: TE/KD	FIRE TRAINING COMPLEX FUEL DISPENSING STATION		
REVIEWED BY: JM	FIRE PROTECTION PLAN		
SUBMITTED BY: 	SOL. NO. DACAG3-92-B-0109 DATED: JUN. 1972 CONTR. NO. DACAB-92-C-0155		
ENGINEER: 	DRAWING NUMBER	SHEET NO.	SEQUENCE NO.
	FPP-110F 12	157	



CONTROL TOWER DECK
SCALE: 1/2" = 1'-0"



CONTROL TOWER SLAB
SCALE: 1/2" = 1'-0"



NOTES

1. THIS BUILDING IS NOT SPRINKLERED.
2. FIRE DETECTION ZONES - A SMOKE DETECTOR WILL BE PROVIDED AT THE 2ND LEVEL CEILING AND A HEAT DETECTOR WILL BE PROVIDED AT THE 1ST LEVEL CEILING.
3. FIRE EXTINGUISHERS
 - A. INSIDE - SIZE FIRE EXTINGUISHER CABINET FOR A MINIMUM 2-A, C RATED EXTINGUISHER.
 - B. WHEELED EXTINGUISHER LOCATION IS FOR MINIMUM 2-A:80-B RATED EXTINGUISHER.
4. SEE SHEET FPP-1 FOR GENERAL NOTES AND LEGEND.

WALK, HAYDEL & ASSOC. INC. ENGINEERS / ARCHITECTS NEW ORLEANS MOBILE BATON ROUGE		U.S. ARMY ENGINEER DISTRICT, FORT WORTH CORPS OF ENGINEERS FORT WORTH, TEXAS	
DESIGNED BY: RT	GOODFELLOW AIR FORCE BASE SAN ANGELO, TEXAS		
DRAWN BY: K.P.	FIRE TRAINING COMPLEX CONTROL TOWER		
REVIEWED BY: J.M.	FIRE PROTECTION PLAN		
SUBMITTED BY: [Signature]	SOL. NO. DACAG3-92-B-0107	DATED: JUN. 1992	SHEET NO. 158
ENGINEER	DWTM. NO. DACAG3-92-C-0155	DRAWING NUMBER FPP-1207 12	SHEET NO. 158



B-GUY