



PERALTA COMMUNITY COLLEGE DISTRICT

Merritt College Cellular Booster Project

ADDENDUM ONE

RFP NO. 21-22/10

Peralta Community College District

333 East 8th Street Oakland, CA 94606

November 19, 2021

ADDENDA

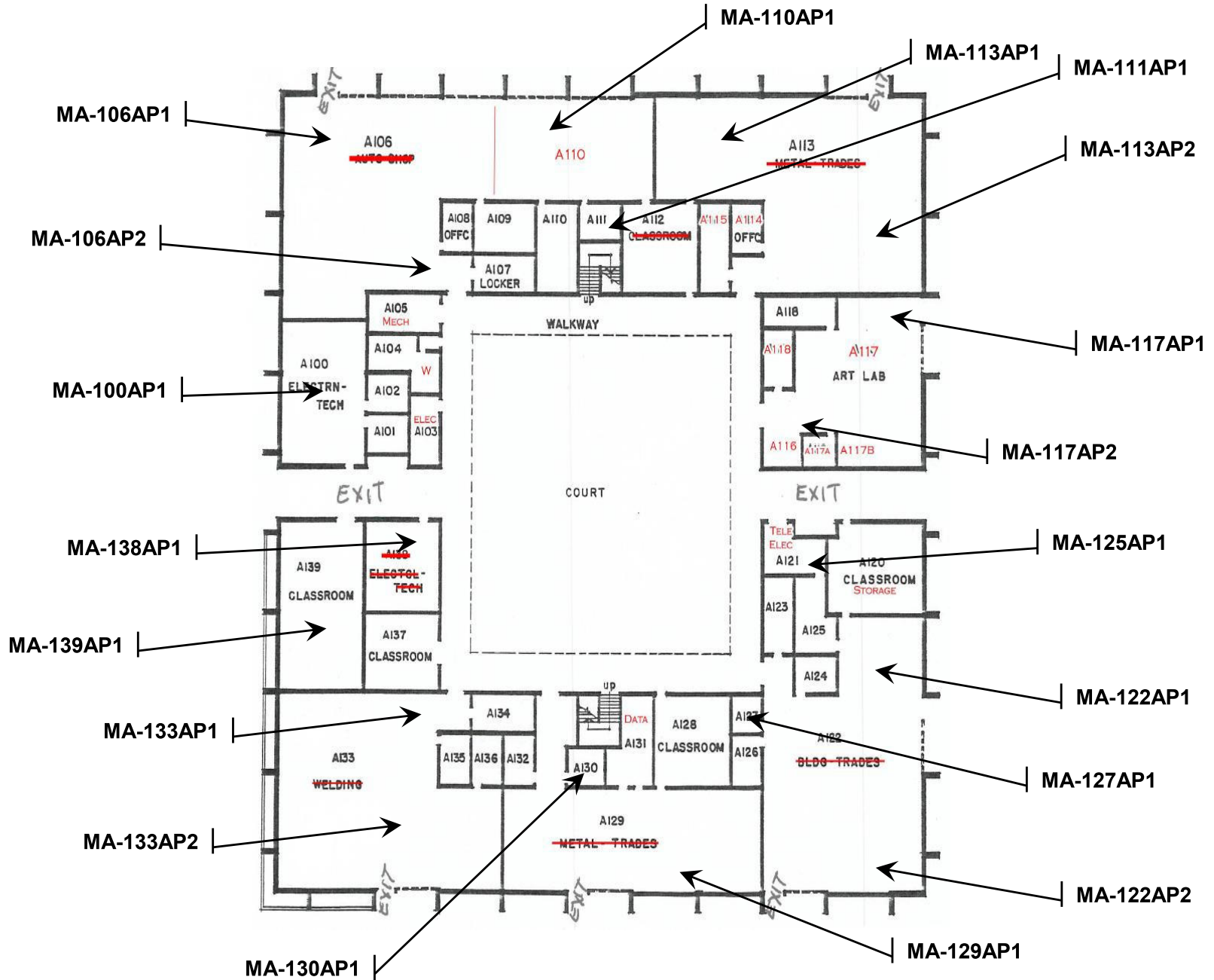
This addendum supersedes items of the original RFP documents wherein it is inconsistent with it. All other conditions remain unchanged. The following changes, modifications, corrections, additions, or clarifications shall apply to the contract documents and shall be made a part of and subject to all the requirements thereof as if originally specified or shown. It is the responsibility of the proposer to review the list of attachments to ensure that the addendum is full and complete. This Addendum modifies the original RFP Documents for the above project.

Acknowledge receipt of this addendum in the space provided on Acknowledgement and Signature Form. Failure to do so may subject proposer to disqualification.

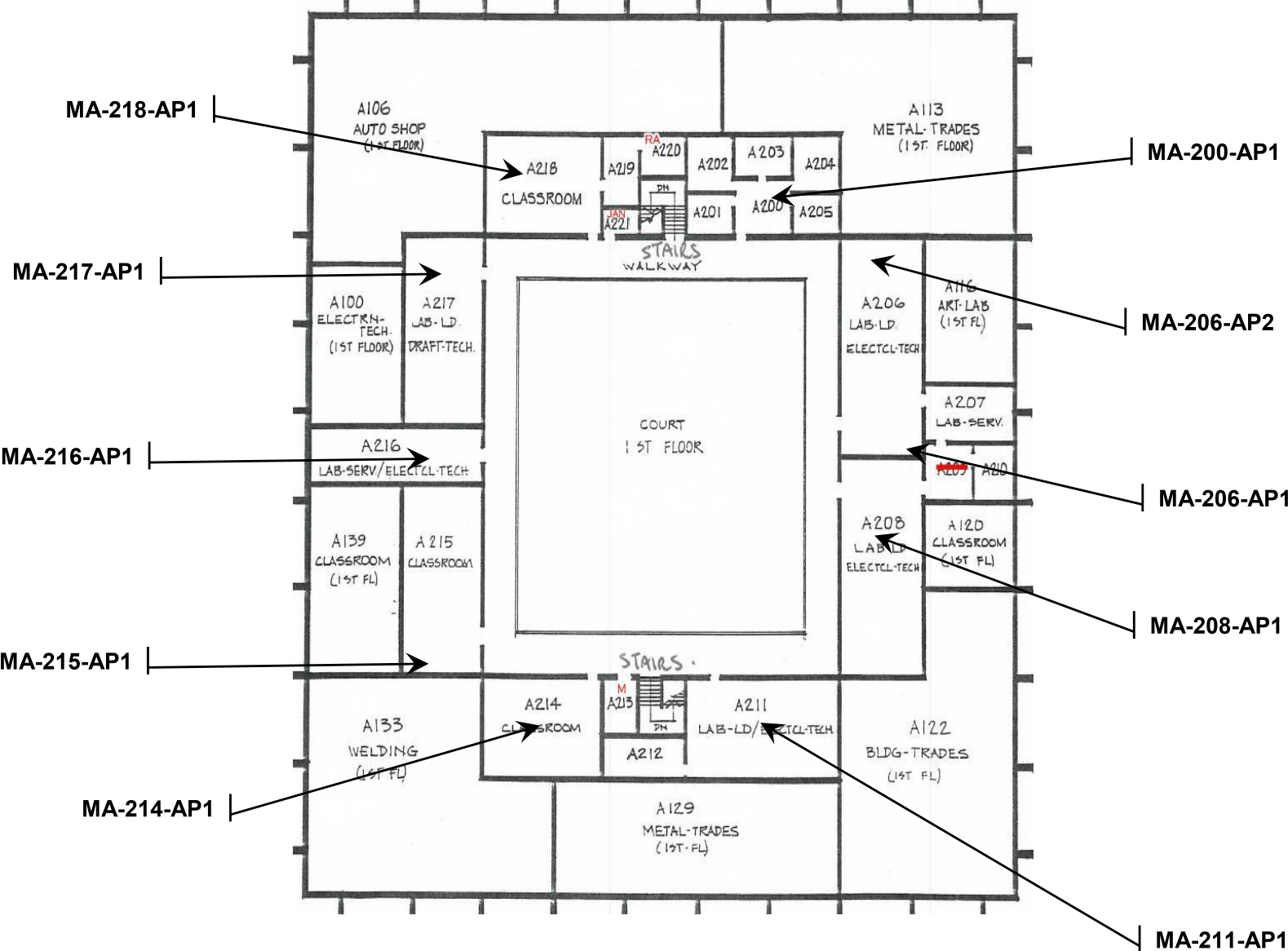
Addition to RFP documents:

1. Merritt Wi-Fi Floors
2. Site Plan Merritt

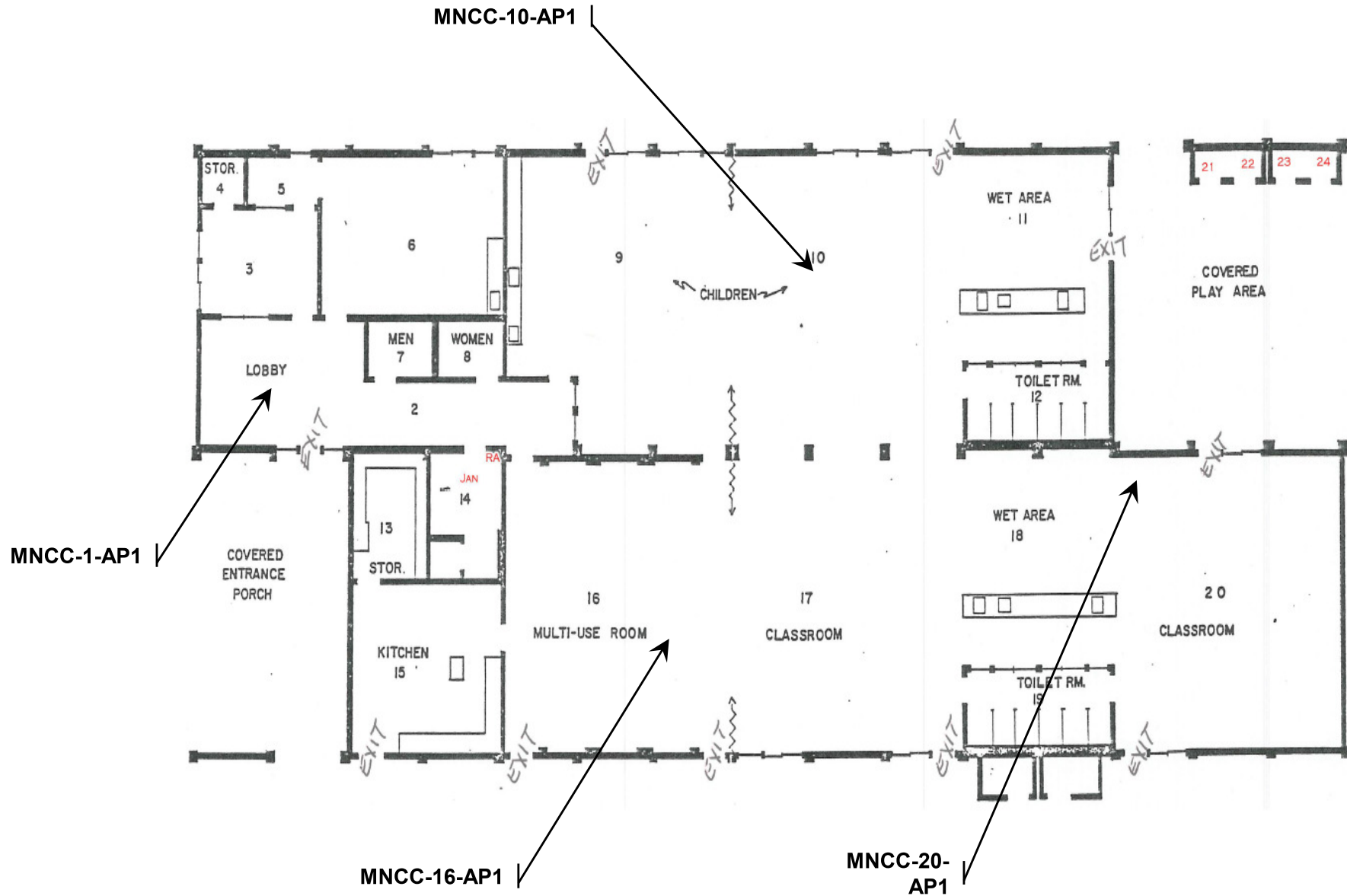
Building A1 (19 Access Points)



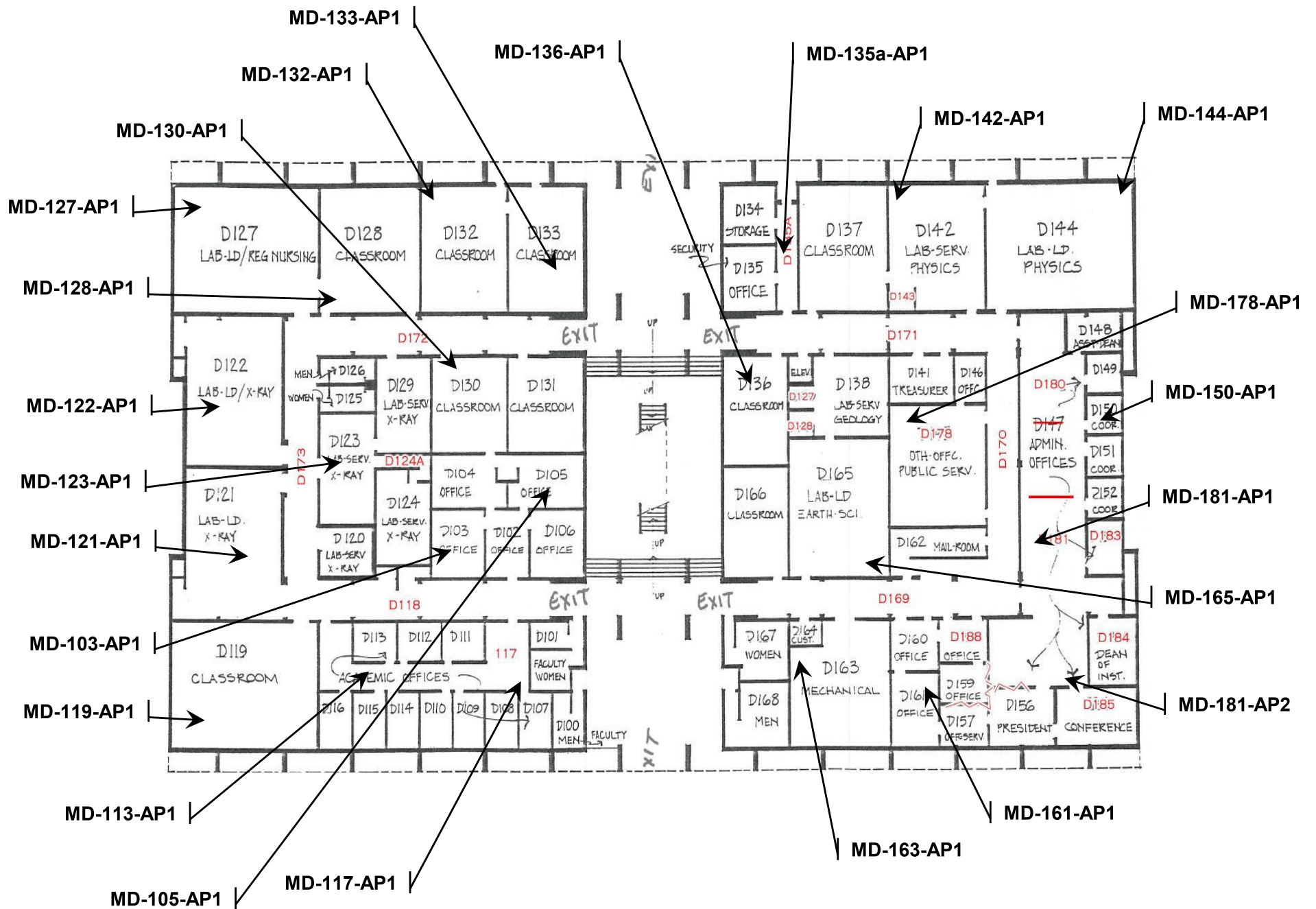
Building A2 (10 Access Points)



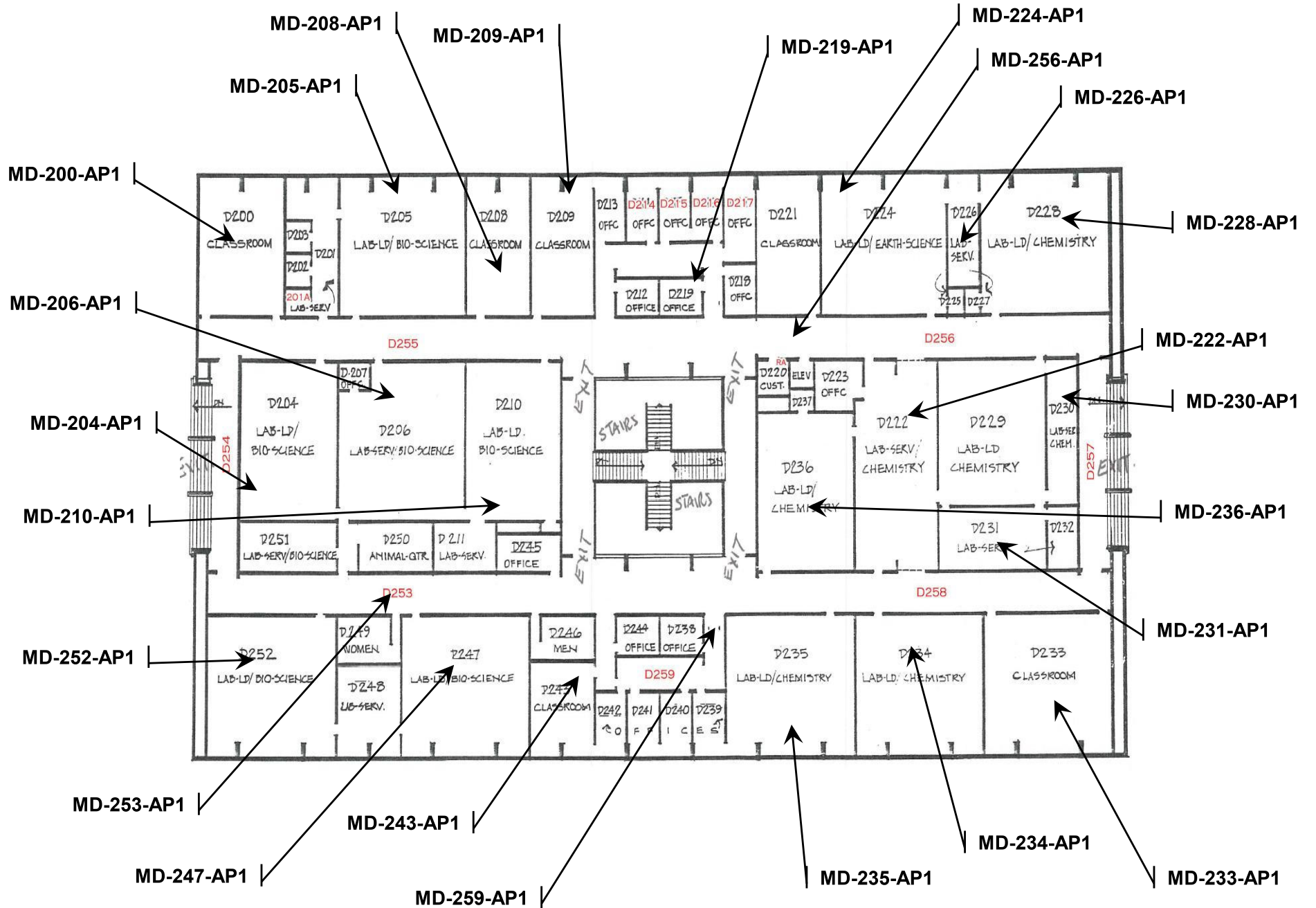
Building NCC Childcare (4 Access Points)



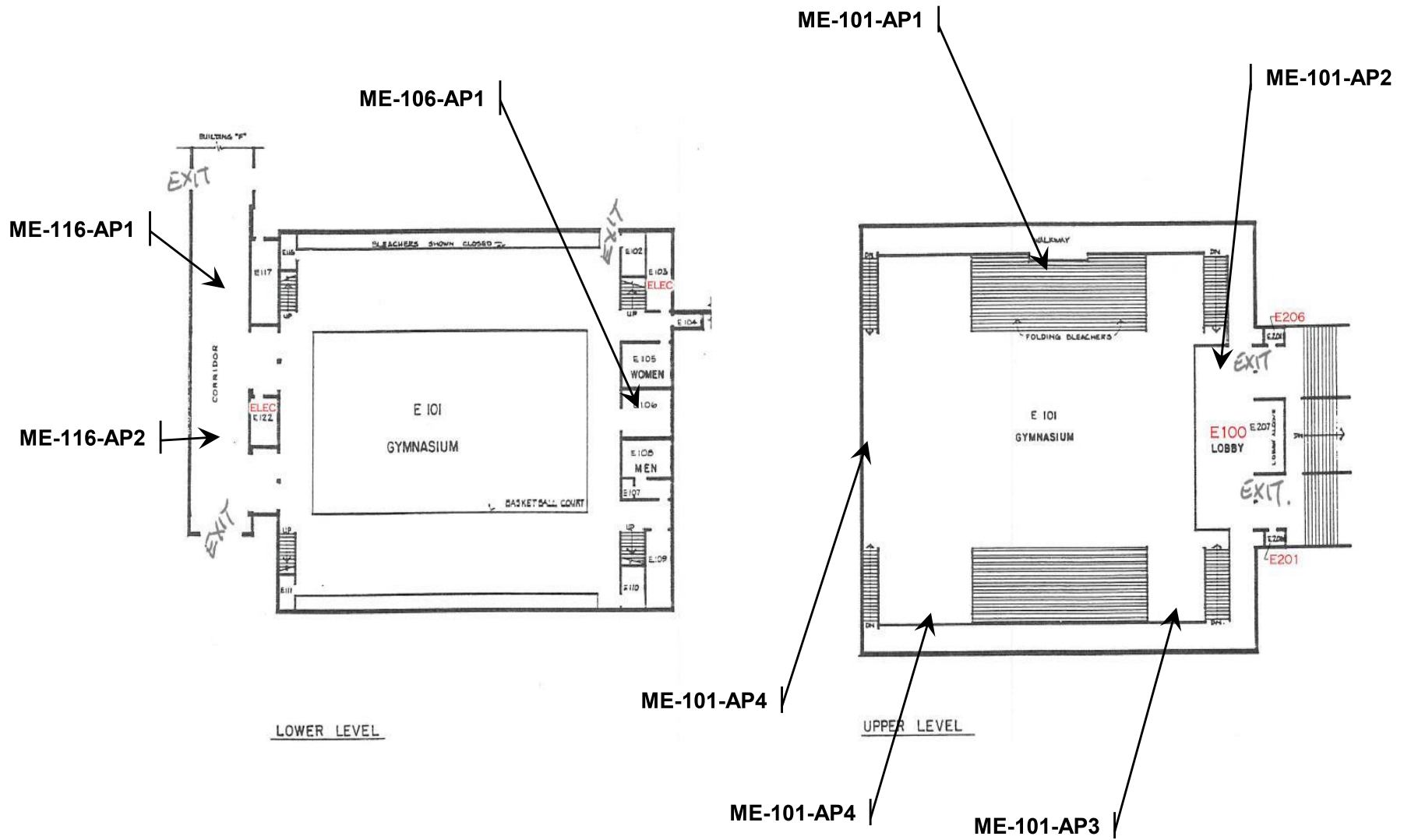
Building D1 (24 Access Points)



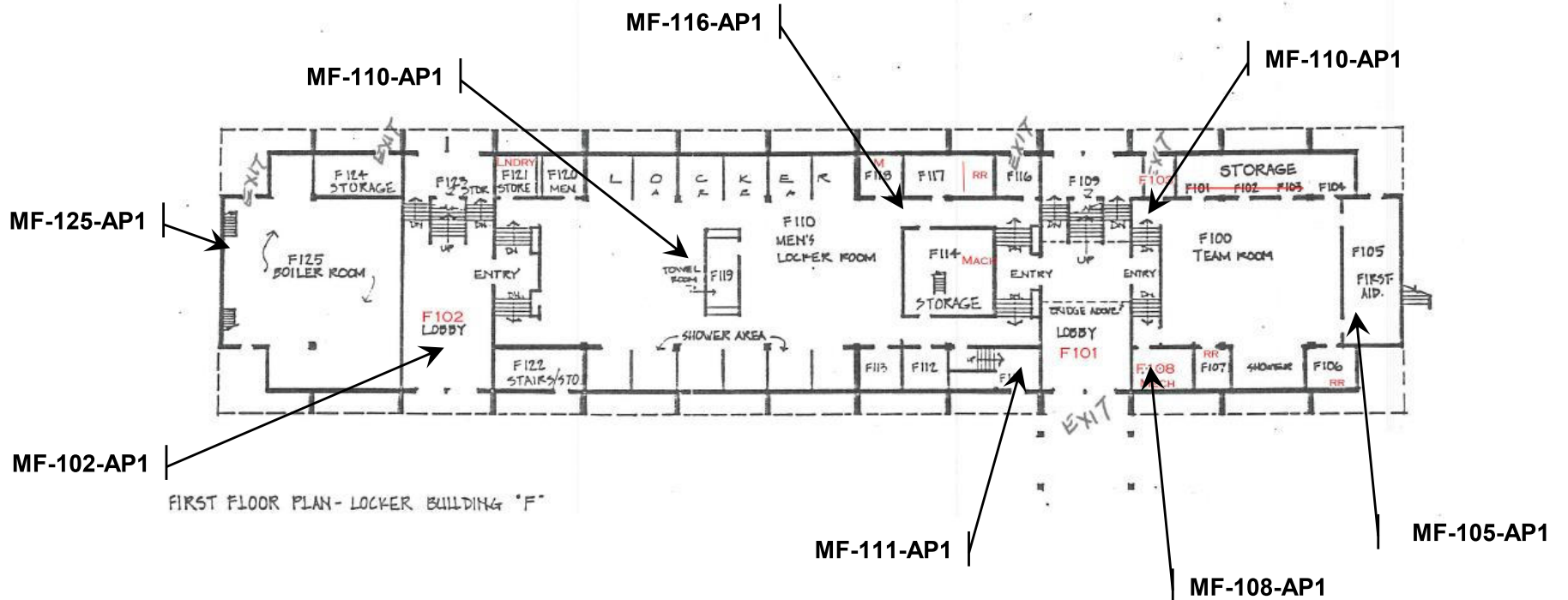
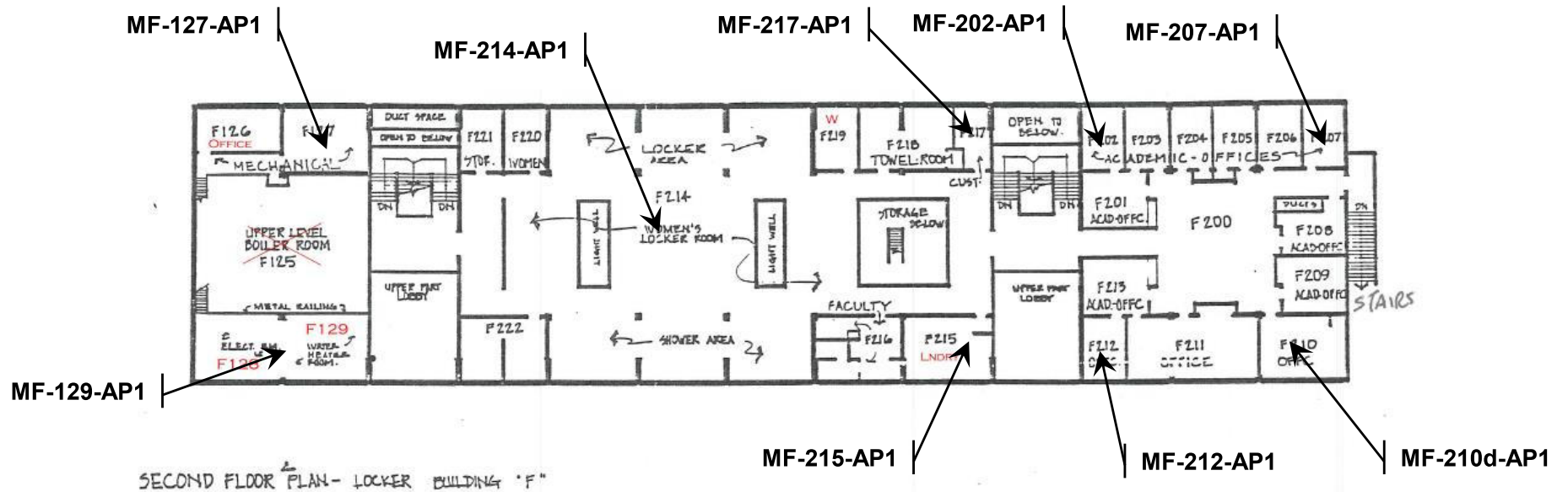
Building D2 (24 Access Points)



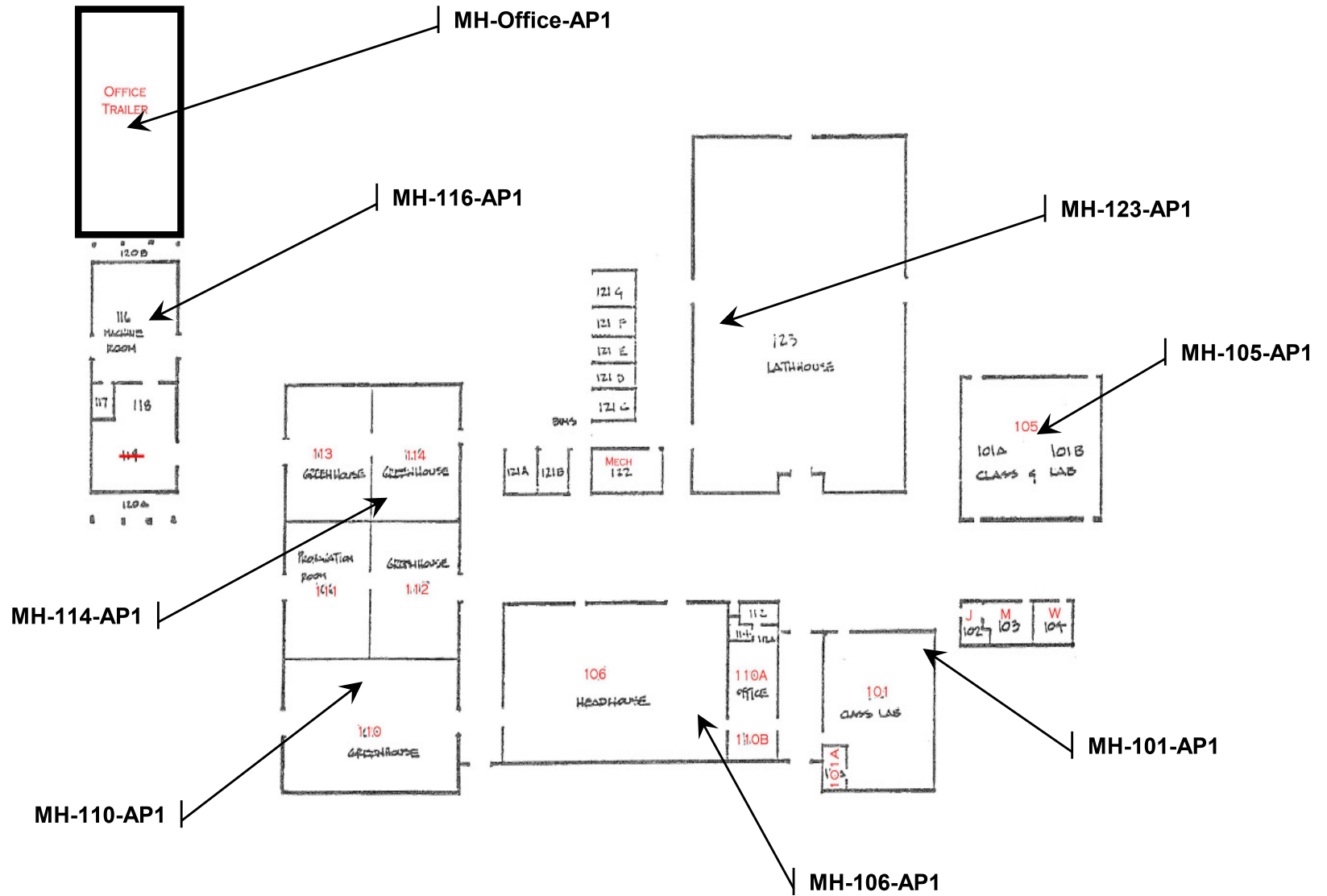
Building E1 E2 (3 / 5 Access Points)



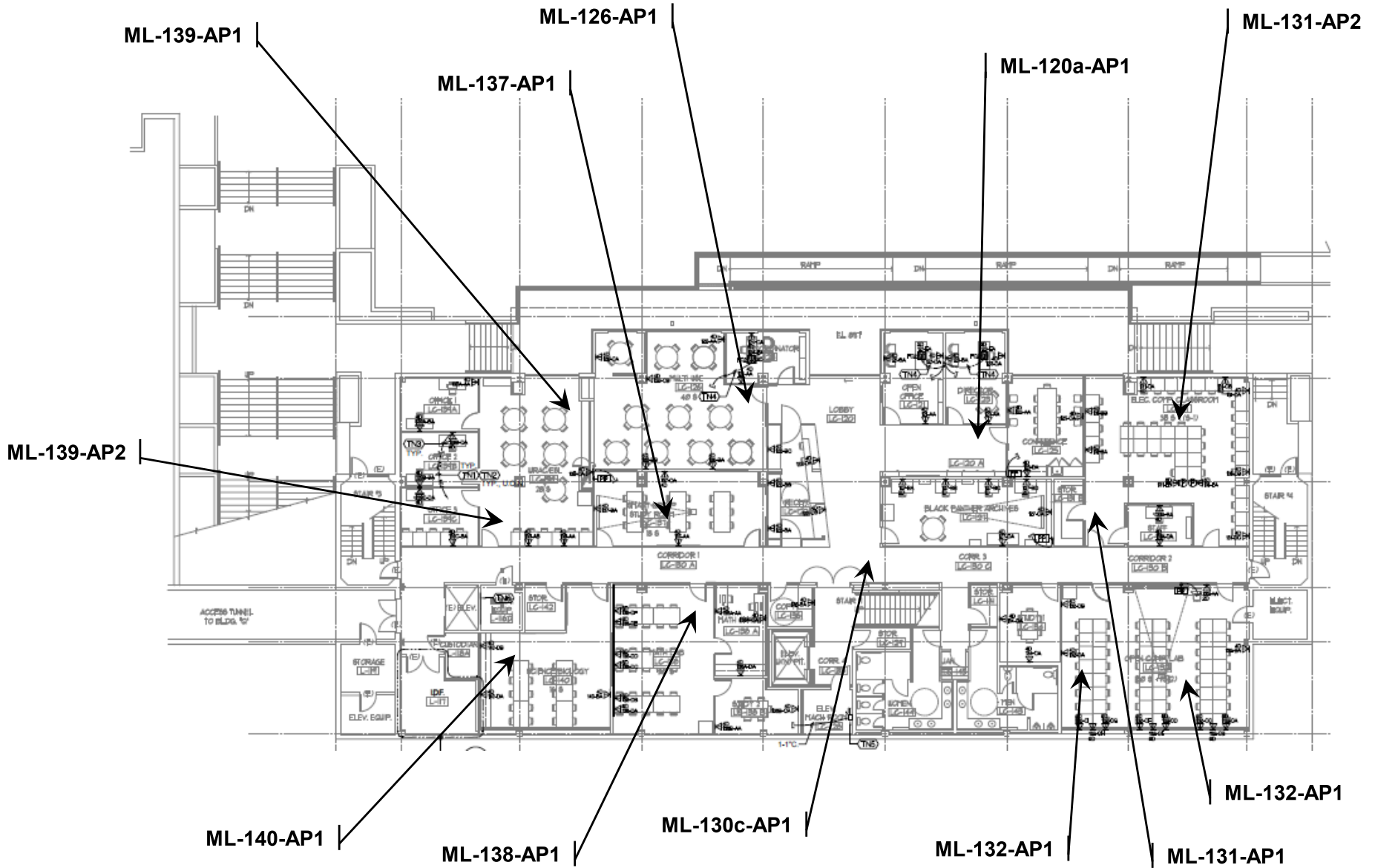
Building F1 F2 (8 / 9 Access Points)



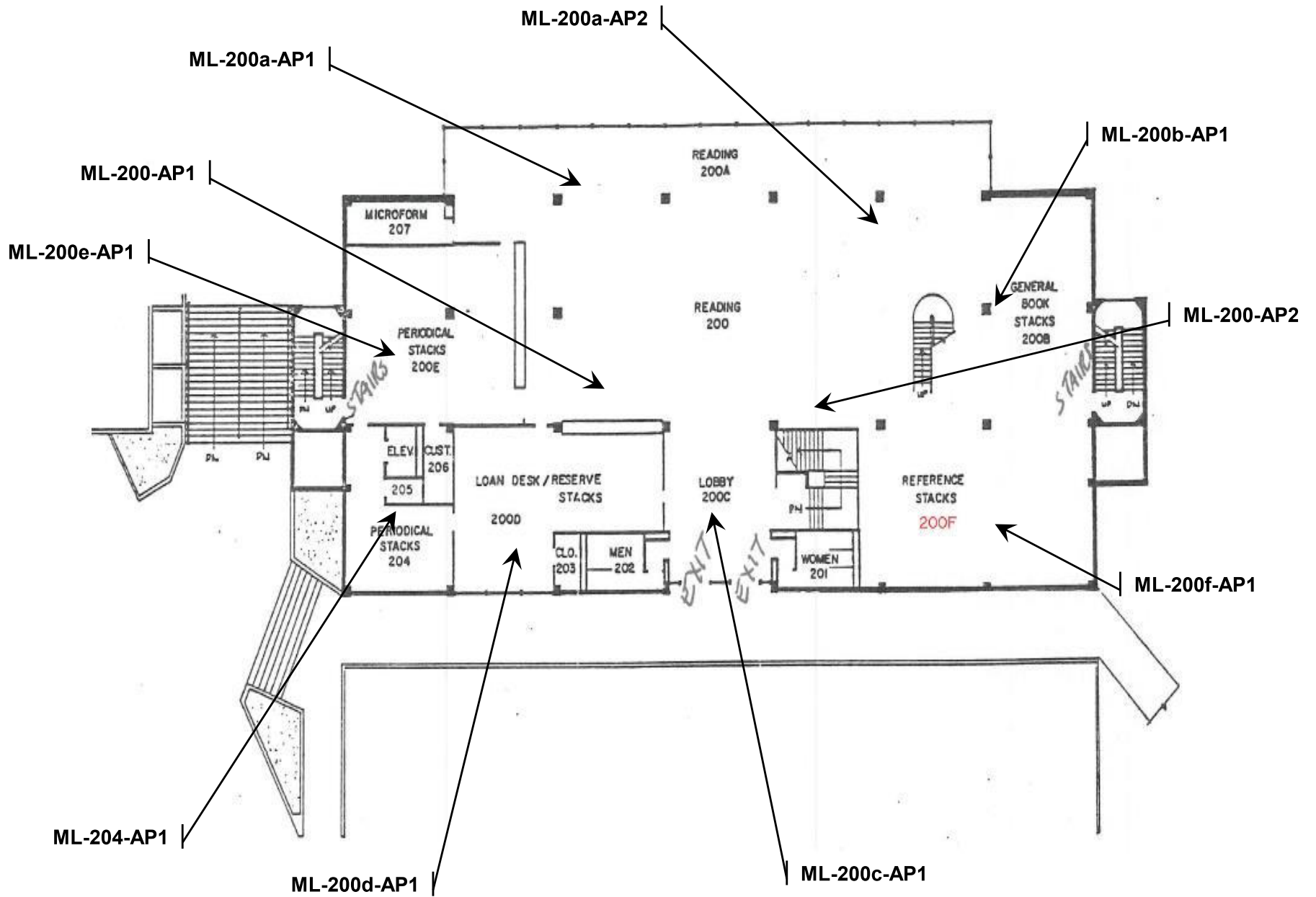
Building Horticulture (8 Access Points)



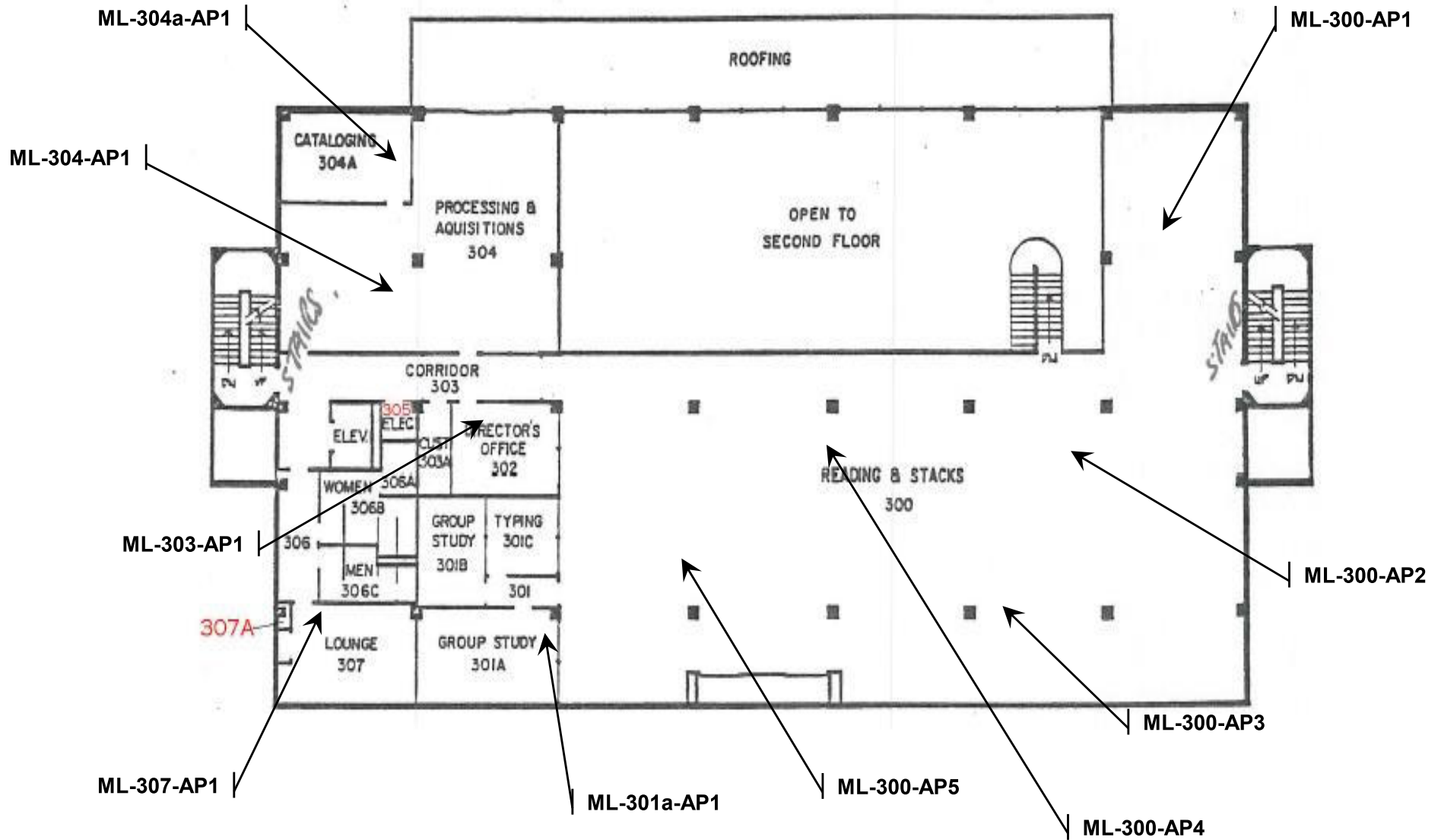
Building LIB1 (12 Access Points)



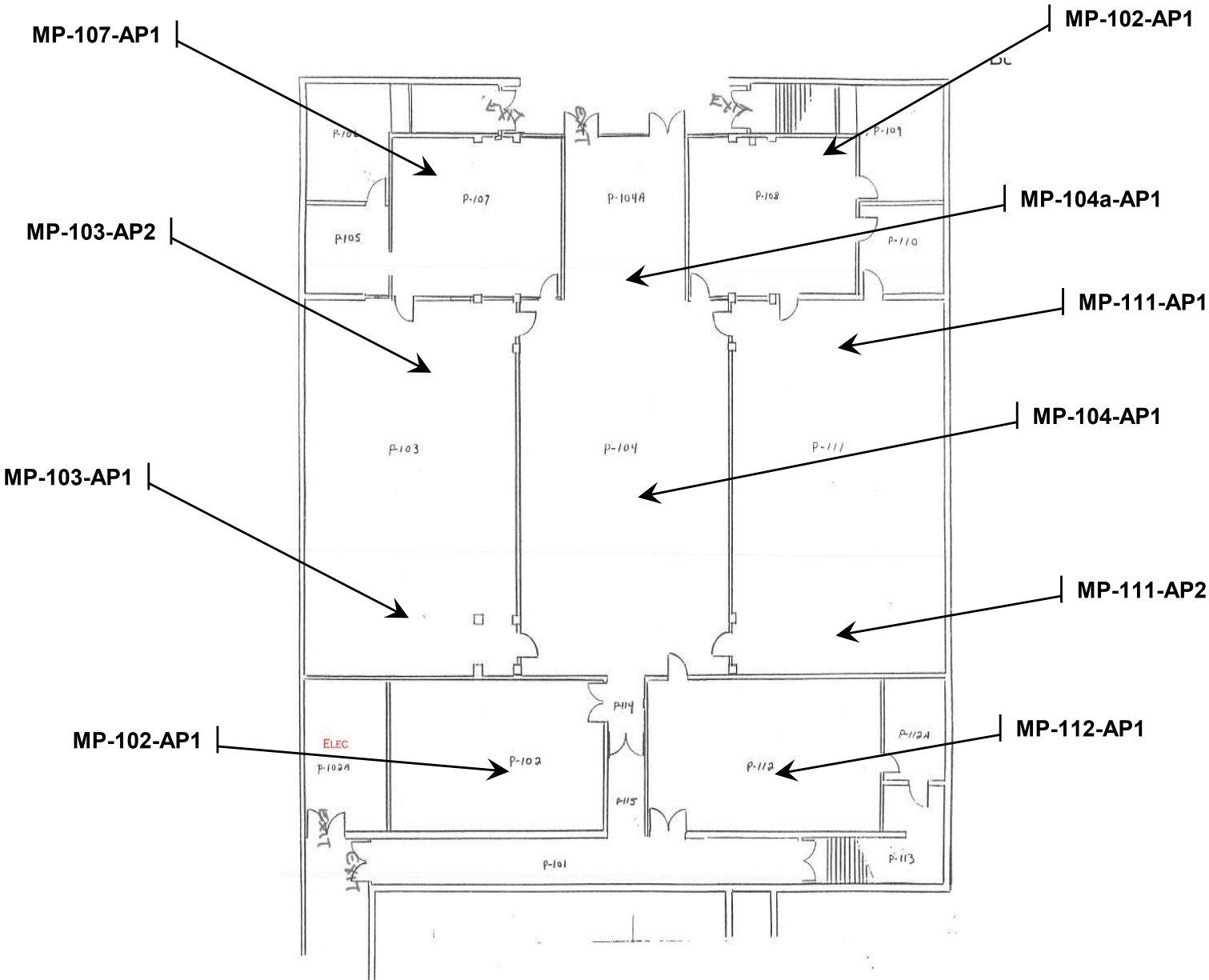
Building LIB2 (9 Access Points)



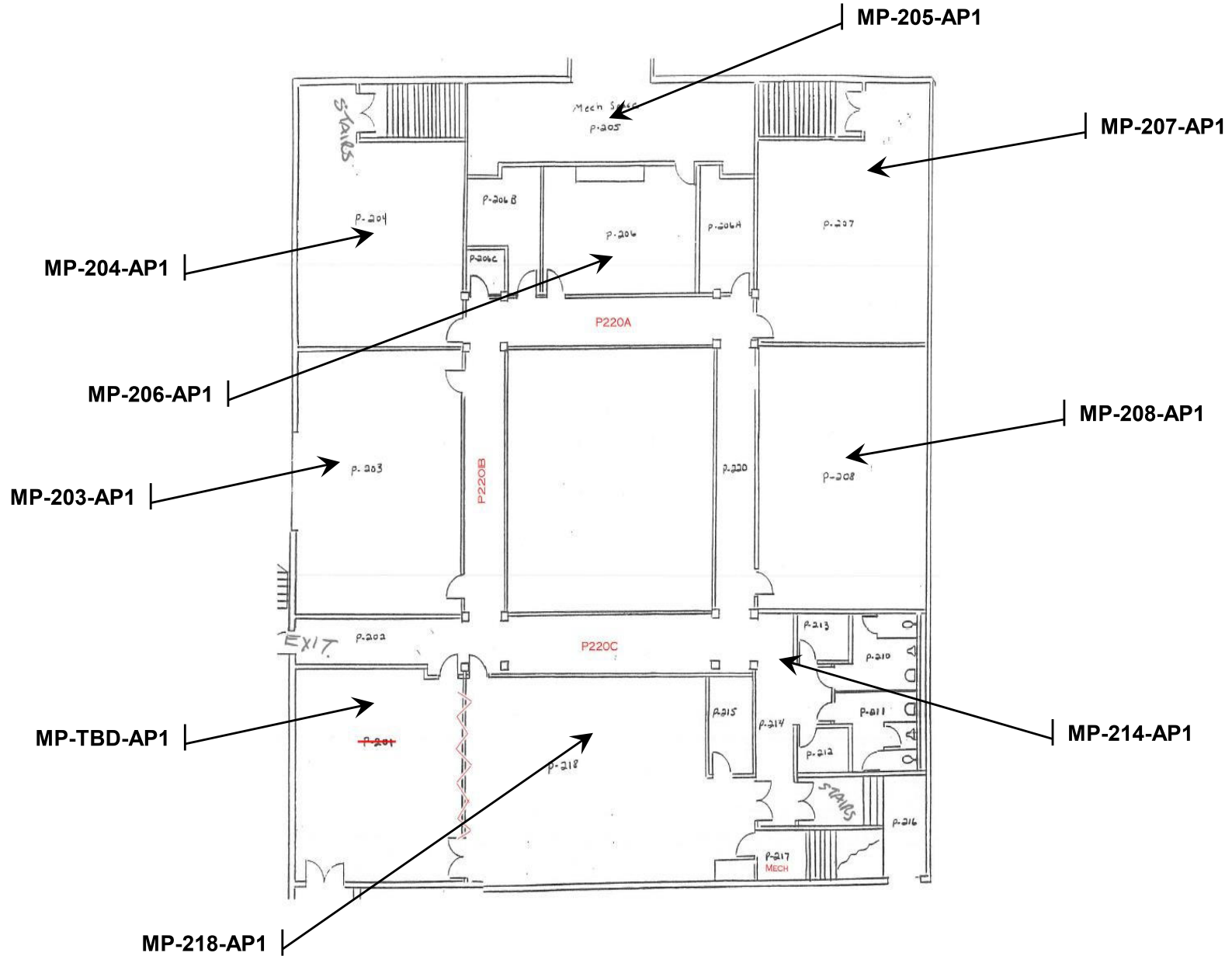
Building LIB3 (10 Access Points)



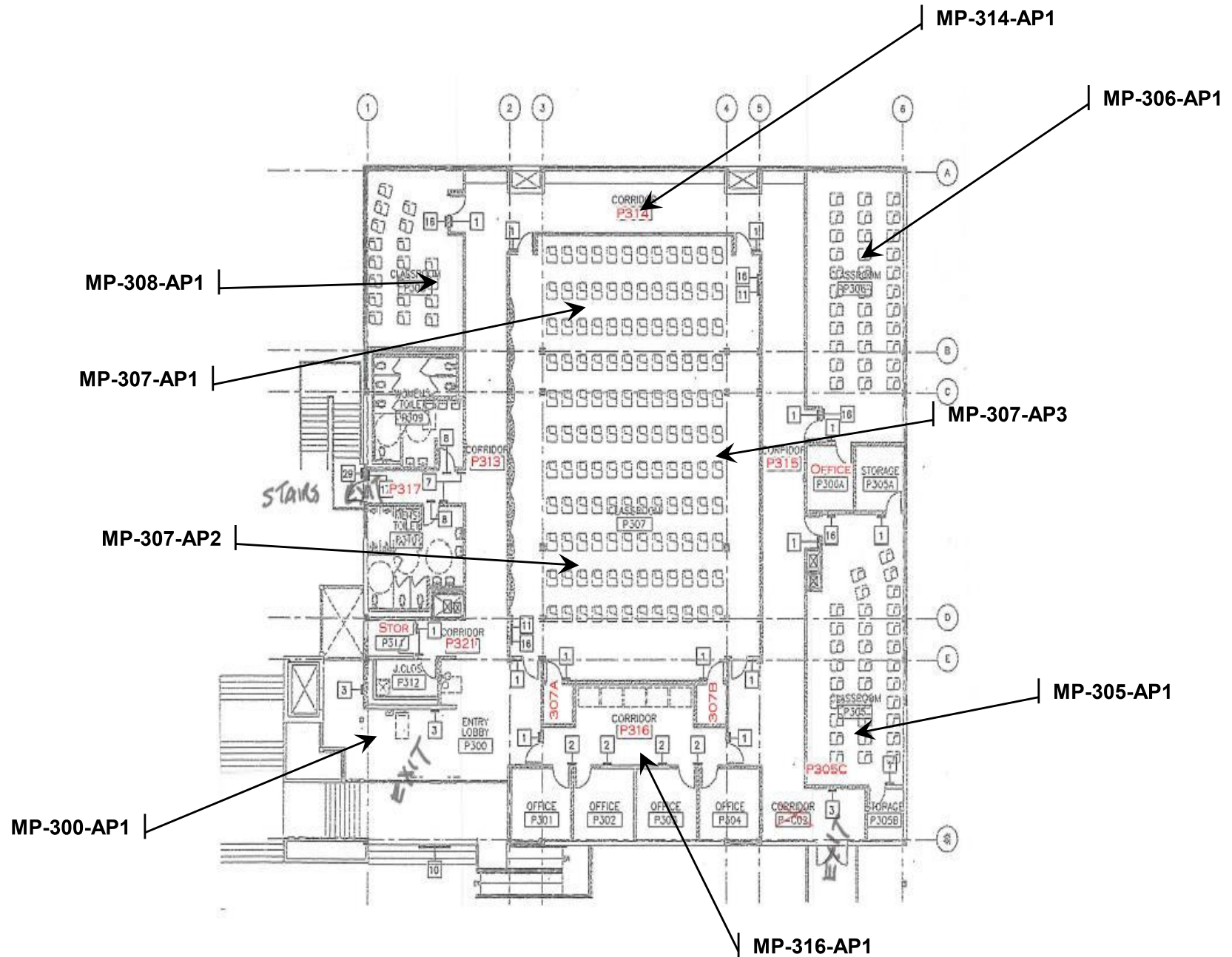
Building P1 (10 Access Points)



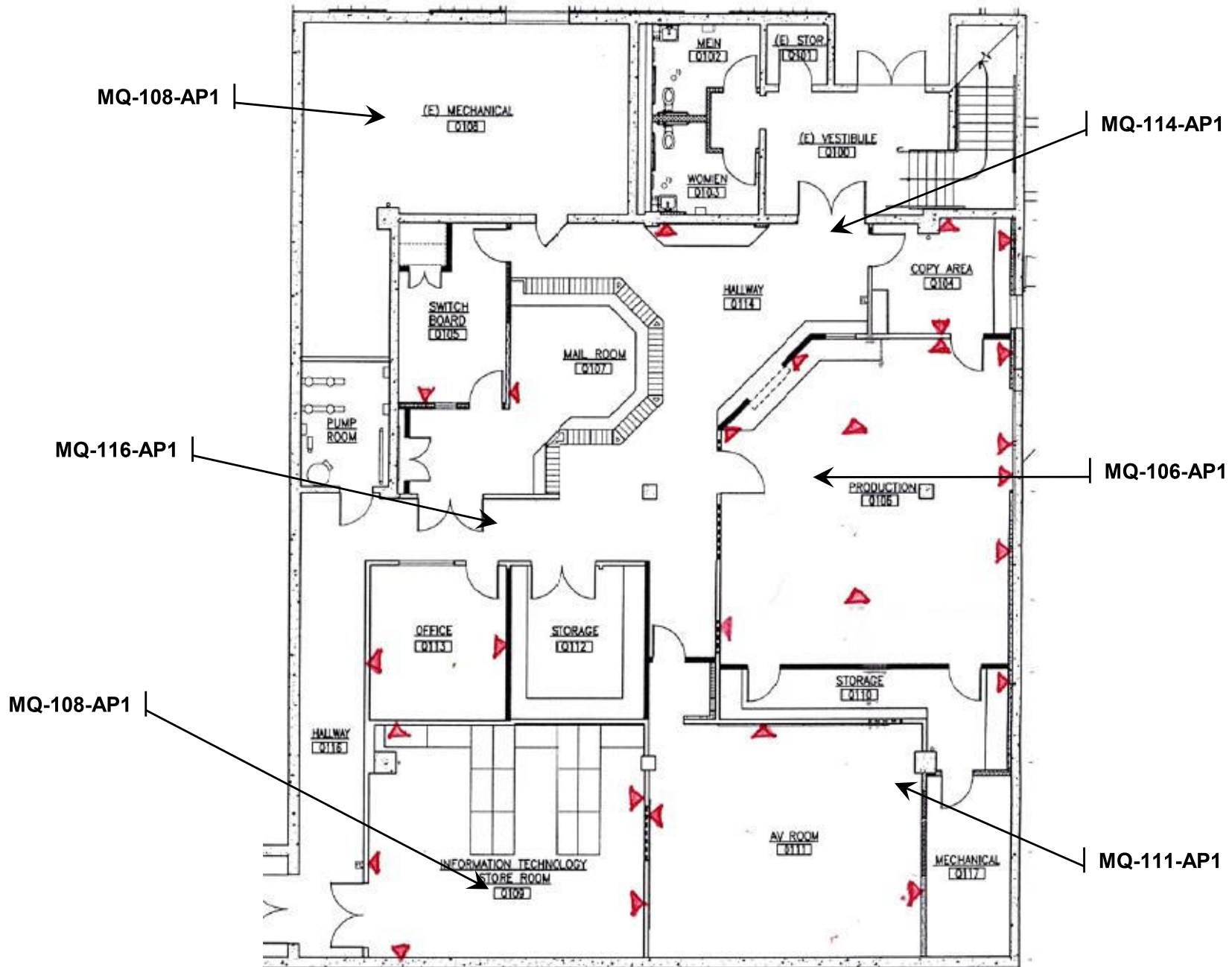
Building P2 (9 Access Points)



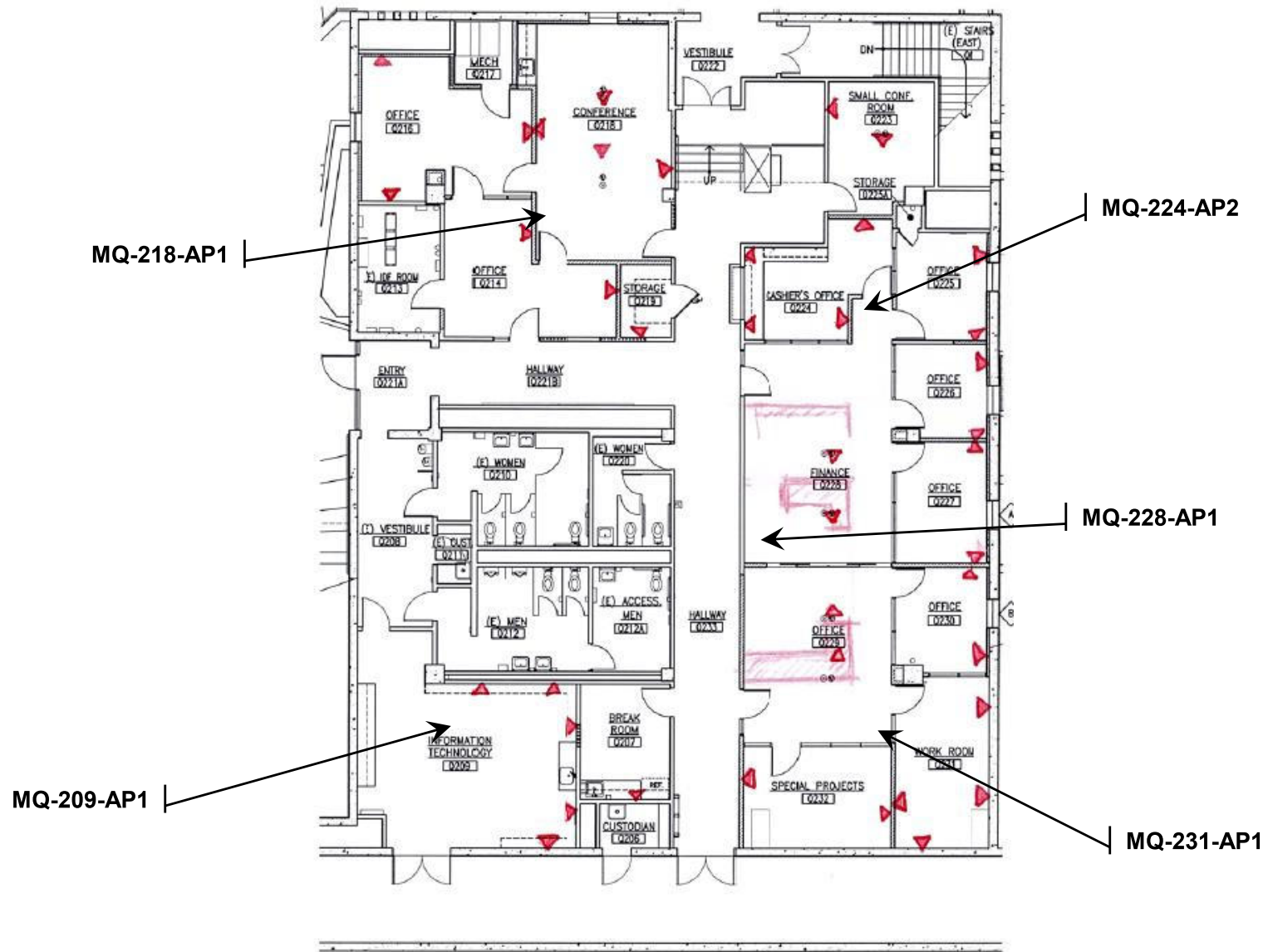
Building P3 (9 Access Points)



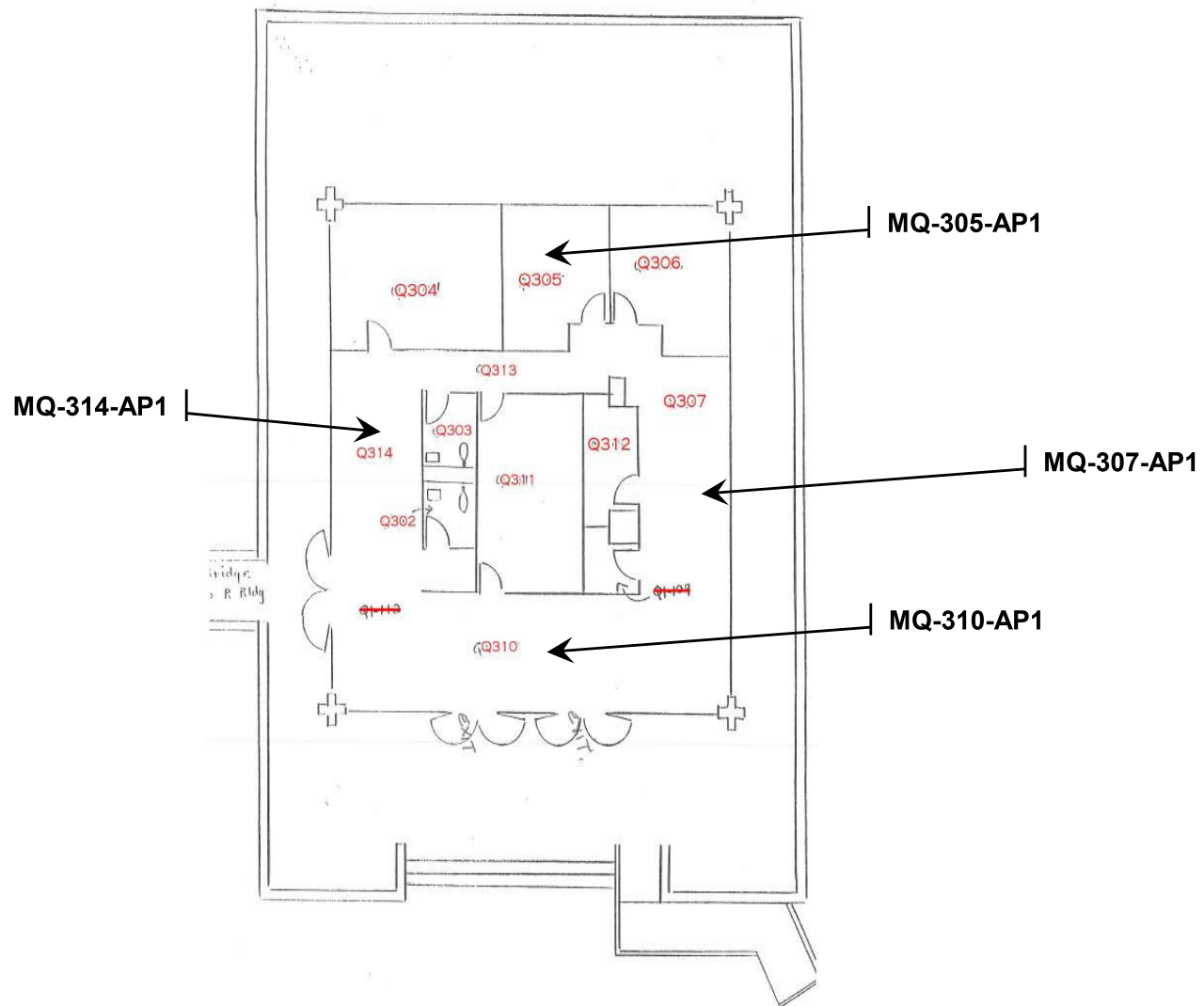
Building Q1 (6 Access Points)



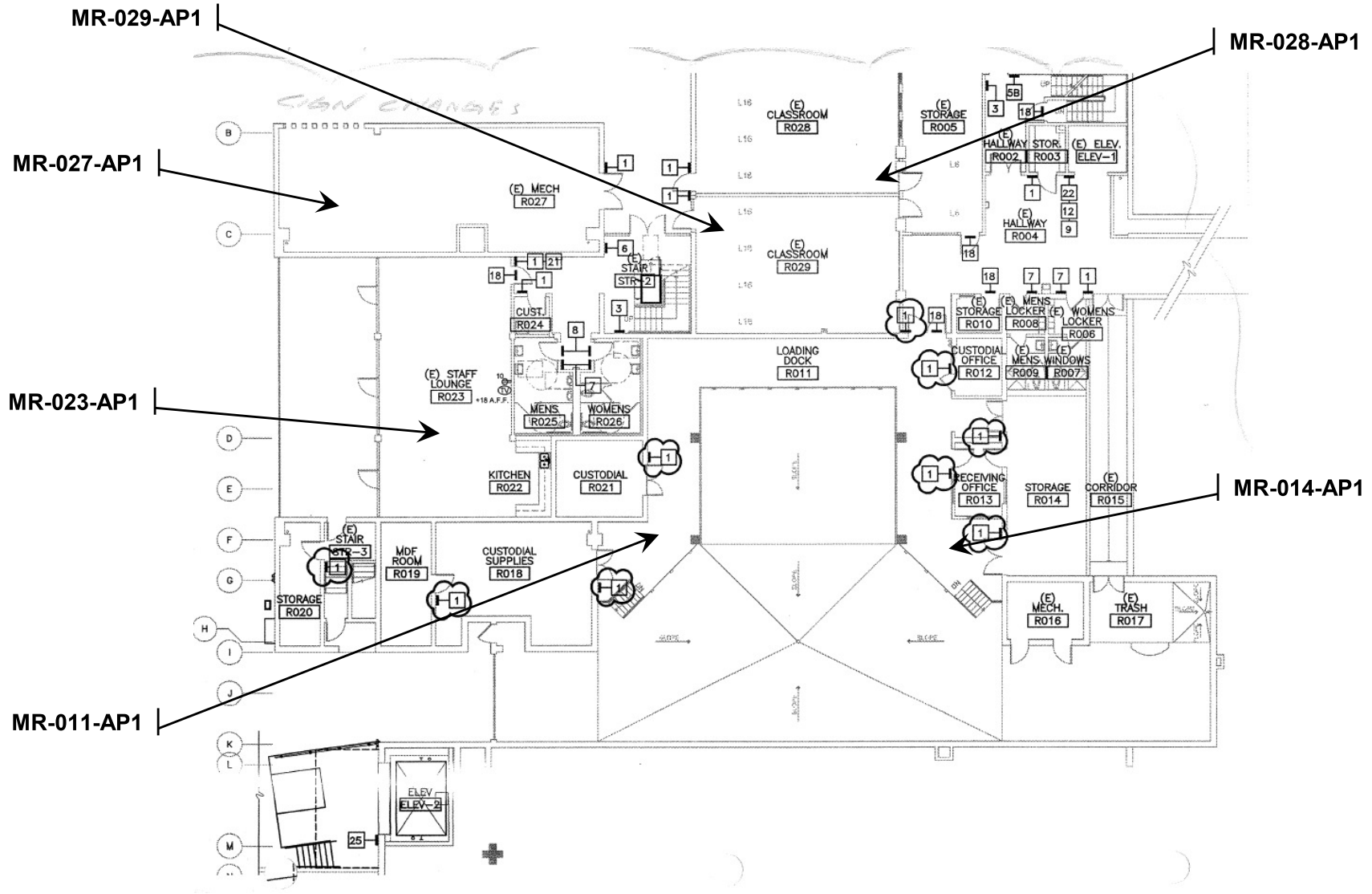
Building Q2 (5 Access Points)



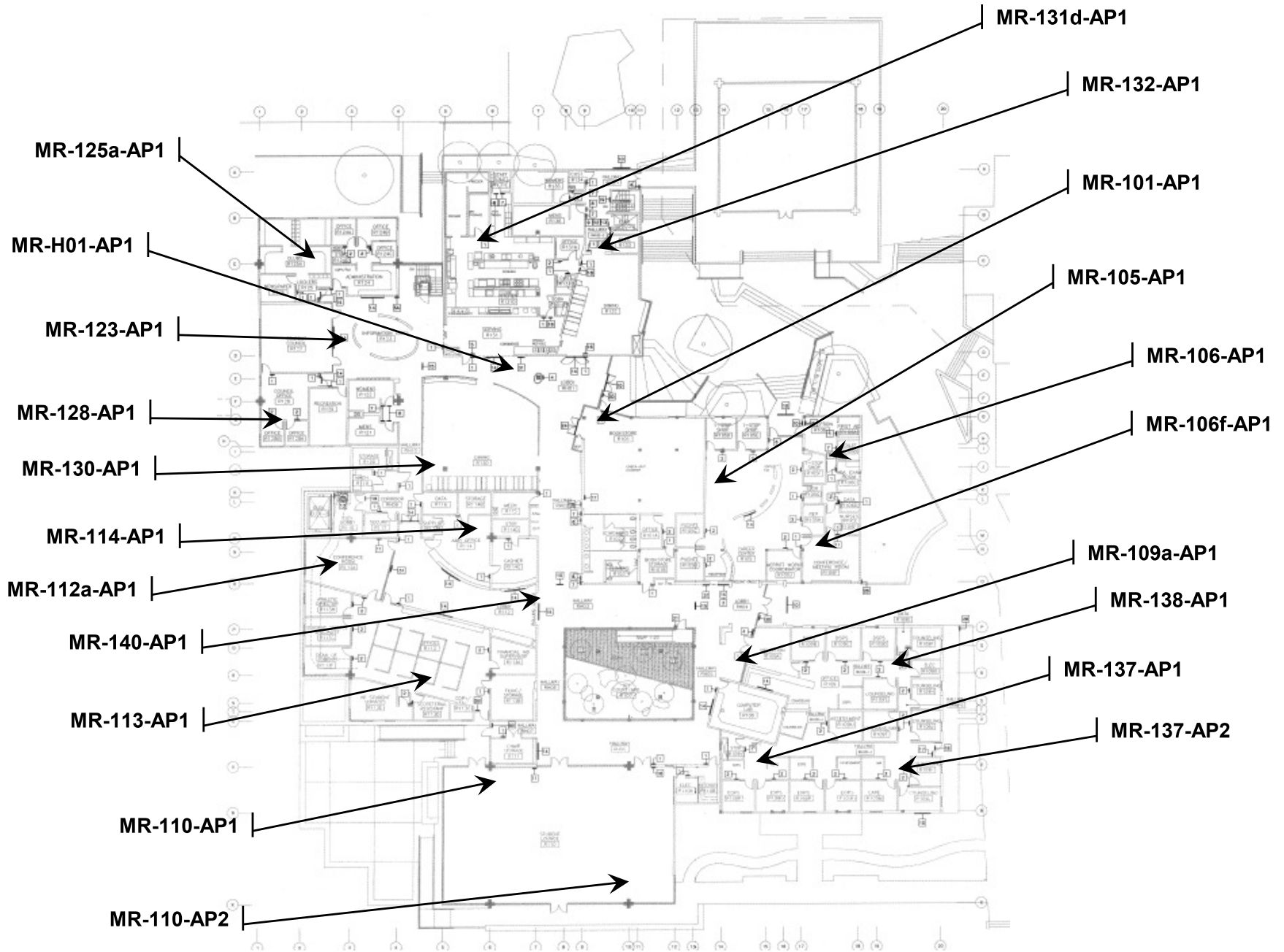
Building Q3 (4 Access Points)

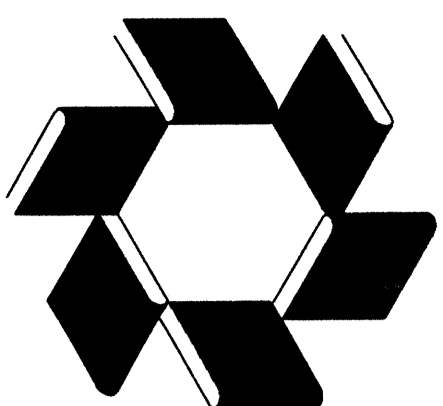


Building R Ground (6 Access Points)



Building R1 (21 Access Points)





PERALTA COMMUNITY COLLEGE DISTRICT

PROJECT 152

FIRE ALARM, SECURITY AND COMMUNICATION CABLEWAY UPGRADES



THE POWER HOUSE
1000 UNIVERSITY PARKWAY
ALAMOGON, CA 94501
(510) 769-7600
(510) 769-1261 FAX

Revisions

No.	Revisions	Date	By
1	SHOP DRAWING FOR APPROVAL	8-29-95	
2	REVISED FOR FINAL APPROVAL	9-11-95	
3	REVISED PER ENGR'S COMMENTS	10-4-95	
4	REVISED CONDUIT LOCATIONS	3/12/96	
5	RECORD DRAWING RE-SUB	9/3/96	

ISSUED FOR CONSTRUCTION

These plans, drawings and specifications are the property of THE ENGINEERING ENTERPRISE and shall remain the property of THE ENGINEERING ENTERPRISE if not returned within 30 days of the date of issue. No part of these plans, drawings and specifications may be reproduced or transmitted in any form or by any means, electronic, mechanical, photocopying, recording, or by any information storage and retrieval system, without the prior written permission of THE ENGINEERING ENTERPRISE. Copyright 1995, THE ENGINEERING ENTERPRISE.

ONS APPROVAL

RECORD DWG

DATE: 9/2/96
SASCO ELECTRIC
MOUNTAIN VIEW, CA
(415) 965-5728
C-4-F-333334

SHEET PLAN

SITE PLAN - MERRITT COLLEGE

Scale: 1" = 100'-0"

Drawn By: CL

Checked By: LC/DM

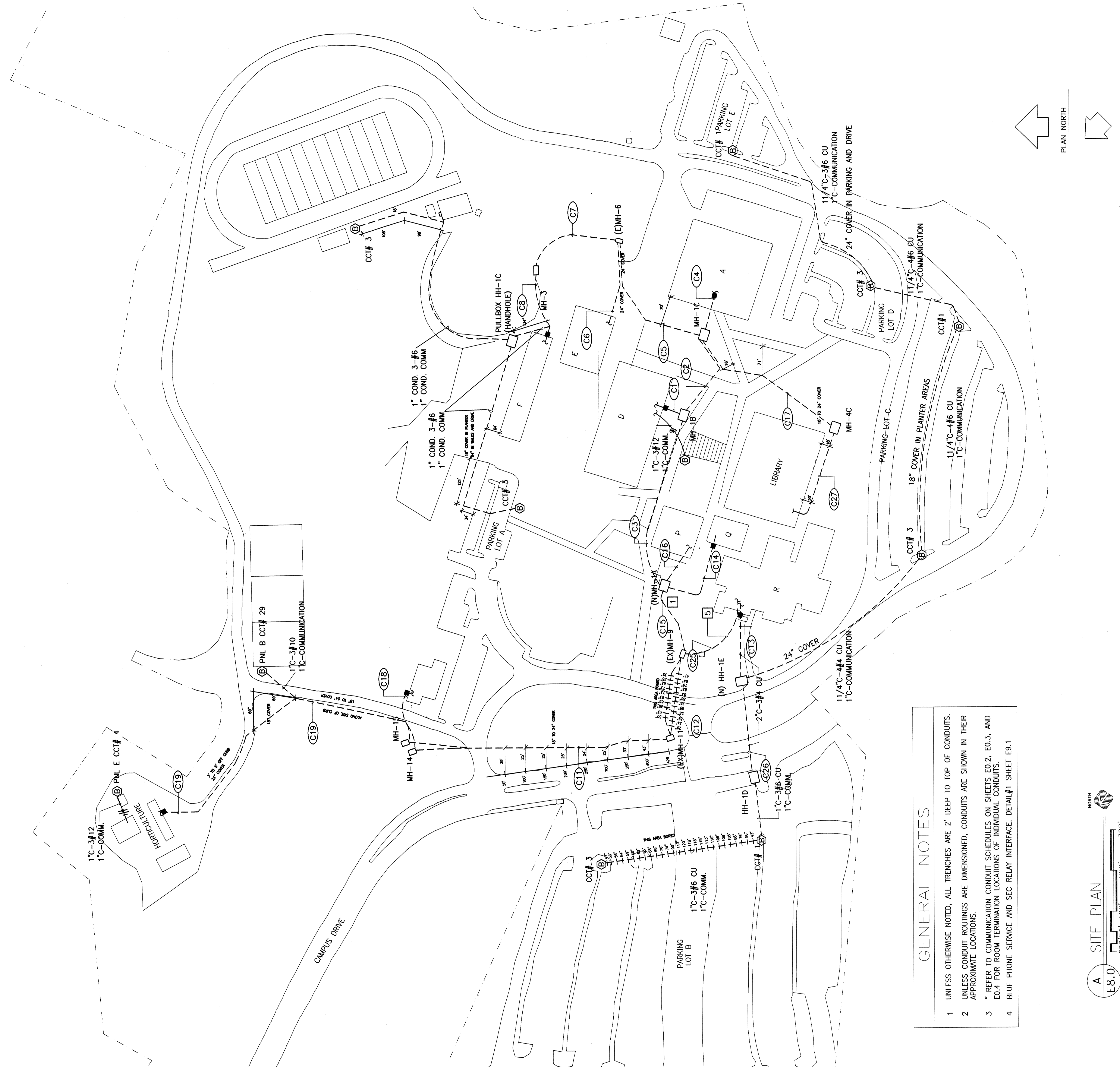
Issue Date: 05/05/1995

E8.0

or Sheets

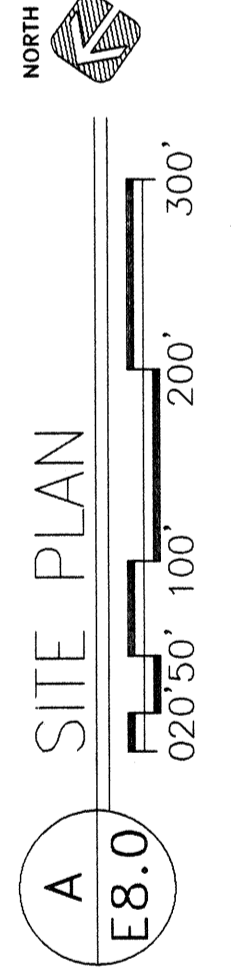
COMMUNICATION CONDUIT DUCT BANK SCHEDULE	
DUCT BANK TAG	NEW CONDUIT
C1	(76) (17) (18) (69) (80) (6) 4" C.
C2	(62) (83) (84) (85) (86) (87) (6) 4" C.
C3	(88) (89) (90) (91) (92) (93) (6) 4" C.
C4	(94) (95) (96) (97) (6) 4" C.
C5	(98) (99) (100) (101) (102) (103) (6) 4" C.
C6	(104) (105) (106) (107) (6) 4" C.
C7	(108) (109) (110) (111) (112) (113) (6) 4" C.
C8	(114) (115) (116) (117) (6) 4" C.
C9	(118) (119) (120) (121) (6) 4" C.
C10	(122) (123) (124) (125) (6) 4" C.
C11	(126) (127) (128) (129) (130) (131) (6) 4" C.
C12	(132) (133) (134) (135) (136) (137) (6) 4" C.
C13	(138) (139) (140) (141) (142) (143) (6) 4" C.
C14	(144) (145) (146) (147) (148) (149) (6) 4" C.
C15	(150) (151) (152) (153) (154) (155) (6) 4" C.
C16	(156) (157) (158) (159) (160) (161) (6) 4" C.
C17	(162) (163) (164) (165) (166) (167) (6) 4" C.
C18	(168) (169) (170) (171) (6) 4" C.
C19	(172) (6) 4" C.
C20	(173) (174) (175) (6) 4" C.
C21	(176) (177) (178) (179) (180) (181) (6) 4" C.
C22	(182) (183) (184) (185) (186) (187) (6) 4" C.
C23	(188) (189) (190) (191) (192) (193) (6) 4" C.
C24	(194) (195) (196) (197) (198) (199) (6) 4" C.
C25	(200) (201) (202) (203) (204) (205) (6) 4" C.
C26	(206) (207) (208) (209) (210) (211) (6) 4" C.
C27	(212) (213) (214) (215) (216) (217) (6) 4" C.
C28	(218) (219) (220) (221) (222) (223) (6) 4" C.
C29	(224) (225) (226) (227) (228) (229) (6) 4" C.
C30	(230) (231) (232) (233) (234) (235) (6) 4" C.
C31	(236) (237) (238) (239) (240) (241) (6) 4" C.
C32	(242) (243) (244) (245) (246) (247) (6) 4" C.
C33	(248) (249) (250) (251) (252) (253) (6) 4" C.
C34	(254) (255) (256) (257) (258) (259) (6) 4" C.
C35	(260) (261) (262) (263) (264) (265) (6) 4" C.
C36	(266) (267) (268) (269) (270) (271) (6) 4" C.
C37	(272) (273) (274) (275) (276) (277) (6) 4" C.
C38	(278) (279) (280) (281) (282) (283) (6) 4" C.
C39	(284) (285) (286) (287) (288) (289) (6) 4" C.
C40	(290) (291) (292) (293) (294) (295) (6) 4" C.
C41	(296) (297) (298) (299) (300) (301) (6) 4" C.
C42	(302) (303) (304) (305) (306) (307) (6) 4" C.
C43	(308) (309) (310) (311) (312) (313) (6) 4" C.
C44	(314) (315) (316) (317) (318) (319) (6) 4" C.
C45	(320) (321) (322) (323) (324) (325) (6) 4" C.
C46	(326) (327) (328) (329) (330) (331) (6) 4" C.
C47	(332) (333) (334) (335) (336) (337) (6) 4" C.
C48	(338) (339) (340) (341) (342) (343) (6) 4" C.
C49	(344) (345) (346) (347) (348) (349) (6) 4" C.
C50	(350) (351) (352) (353) (354) (355) (6) 4" C.
C51	(356) (357) (358) (359) (360) (361) (6) 4" C.
C52	(362) (363) (364) (365) (366) (367) (6) 4" C.
C53	(368) (369) (370) (371) (372) (373) (6) 4" C.
C54	(374) (375) (376) (377) (378) (379) (6) 4" C.
C55	(380) (381) (382) (383) (384) (385) (6) 4" C.
C56	(386) (387) (388) (389) (390) (391) (6) 4" C.
C57	(392) (393) (394) (395) (396) (397) (6) 4" C.
C58	(398) (399) (400) (401) (402) (403) (6) 4" C.
C59	(404) (405) (406) (407) (408) (409) (6) 4" C.
C60	(410) (411) (412) (413) (414) (415) (6) 4" C.
C61	(416) (417) (418) (419) (420) (421) (6) 4" C.
C62	(422) (423) (424) (425) (426) (427) (6) 4" C.
C63	(428) (429) (430) (431) (432) (433) (6) 4" C.
C64	(434) (435) (436) (437) (438) (439) (6) 4" C.
C65	(440) (441) (442) (443) (444) (445) (6) 4" C.
C66	(446) (447) (448) (449) (450) (451) (6) 4" C.
C67	(452) (453) (454) (455) (456) (457) (6) 4" C.
C68	(458) (459) (460) (461) (462) (463) (6) 4" C.
C69	(464) (465) (466) (467) (468) (469) (6) 4" C.
C70	(470) (471) (472) (473) (474) (475) (6) 4" C.
C71	(476) (477) (478) (479) (480) (481) (6) 4" C.
C72	(482) (483) (484) (485) (486) (487) (6) 4" C.
C73	(488) (489) (490) (491) (492) (493) (6) 4" C.
C74	(494) (495) (496) (497) (498) (499) (6) 4" C.
C75	(500) (501) (502) (503) (504) (505) (6) 4" C.
C76	(506) (507) (508) (509) (510) (511) (6) 4" C.
C77	(512) (513) (514) (515) (516) (517) (6) 4" C.
C78	(518) (519) (520) (521) (522) (523) (6) 4" C.
C79	(524) (525) (526) (527) (528) (529) (6) 4" C.
C80	(530) (531) (532) (533) (534) (535) (6) 4" C.
C81	(536) (537) (538) (539) (540) (541) (6) 4" C.
C82	(542) (543) (544) (545) (546) (547) (6) 4" C.
C83	(548) (549) (550) (551) (552) (553) (6) 4" C.
C84	(554) (555) (556) (557) (558) (559) (6) 4" C.
C85	(560) (561) (562) (563) (564) (565) (6) 4" C.
C86	(566) (567) (568) (569) (570) (571) (6) 4" C.
C87	(572) (573) (574) (575) (576) (577) (6) 4" C.
C88	(578) (579) (580) (581) (582) (583) (6) 4" C.
C89	(584) (585) (586) (587) (588) (589) (6) 4" C.
C90	(590) (591) (592) (593) (594) (595) (6) 4" C.
C91	(596) (597) (598) (599) (600) (601) (6) 4" C.
C92	(602) (603) (604) (605) (606) (607) (6) 4" C.
C93	(608) (609) (610) (611) (612) (613) (6) 4" C.
C94	(614) (615) (616) (617) (618) (619) (6) 4" C.
C95	(620) (621) (622) (623) (624) (625) (6) 4" C.
C96	(626) (627) (628) (629) (630) (631) (6) 4" C.
C97	(632) (633) (634) (635) (636) (637) (6) 4" C.
C98	(638) (639) (640) (641) (642) (643) (6) 4" C.
C99	(644) (645) (646) (647) (648) (649) (6) 4" C.
C100	(650) (651) (652) (653) (654) (655) (6) 4" C.

NOTES:
1. REFER TO COMMUNICATION CONDUIT SCHEDULE, SHEET ED.2, ED.3 AND ED.4, FOR CONDUIT INFORMATION.



GENERAL NOTES

- UNLESS OTHERWISE NOTED, ALL TRENCHES ARE 2' DEEP TO TOP OF CONDUITS.
- UNLESS CONDUIT ROUTINGS ARE DIMENSIONED, CONDUITS ARE SHOWN IN THEIR APPROXIMATE LOCATIONS.
- REFER TO COMMUNICATION CONDUIT SCHEDULES ON SHEETS ED.2, ED.3, AND ED.4 FOR ROOM TERMINATION LOCATIONS OF INDIVIDUAL CONDUITS.
- BLUE PHONE SERVICE AND SEC RELAY INTERFACE, DETAIL#1 SHEET E9.1



TYPE	PULL BOX SCHEDULE	COVER MARKED
HH-1C	2'x2'x2' SPLIT COMPARTMENT	SIGNAL & ELECTRICAL
HH-1D	2'x2'x2'D SPLIT COMPARTMENT	SIGNAL & ELECTRICAL
HH-1E	2'x2'x2'D SPLIT COMPARTMENT	SIGNAL & ELECTRICAL
MH-1A	4'-6"x8'-6"x6'-6"D	SIGNAL
MH-1B	4'-6"x8'-6"x6'-6"D	SIGNAL
MH-1C	4'-6"x8'-6"x6'-6"D	SIGNAL
MH-4C	3'x5'x3'	SIGNAL