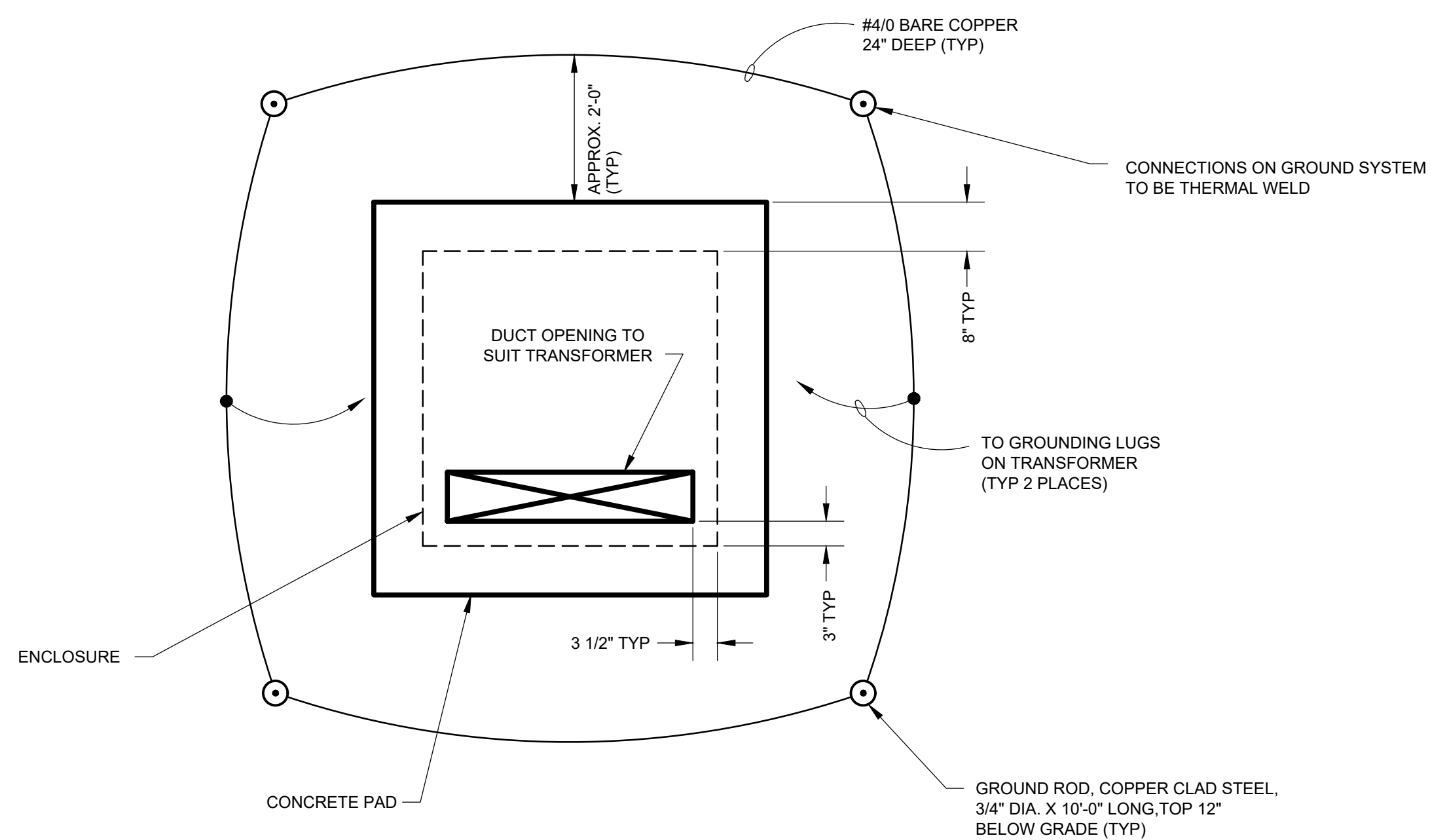


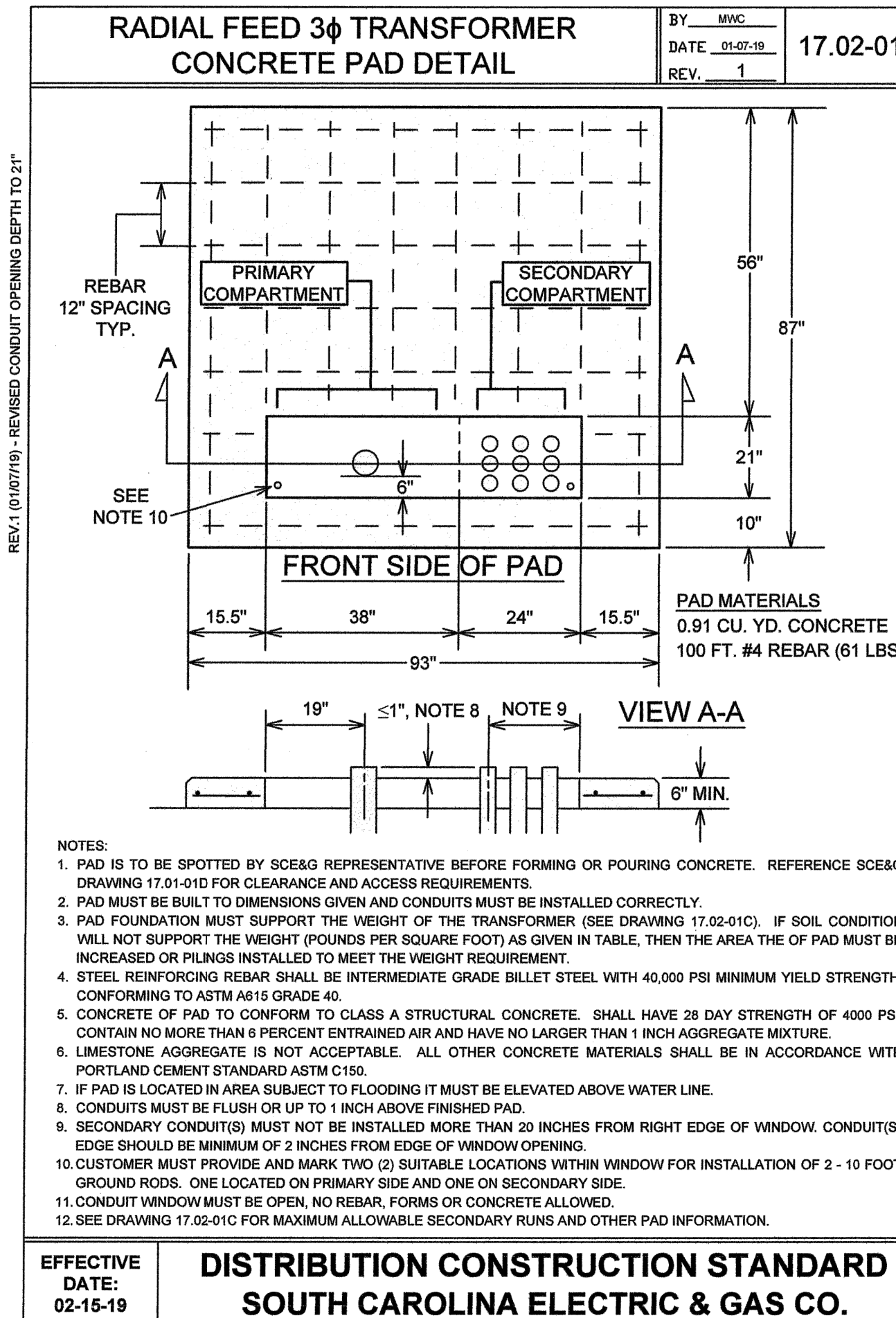
LEGEND:

- INDICATES BOLTED CONNECTION.
- INDICATES EXOTHERMIC WELD CONNECTION, COMPATIBLE WITH MATERIALS BEING JOINED.
- ① #4/0 AWG INSULATED COPPER GROUND CONDUCTOR IN 30mm CONDUIT.
- ② #2/0 AWG INSULATED COPPER GROUND CONDUCTOR IN 30mm CONDUIT.
- ③ #4/0 AWG BARE COPPER GROUND CONDUCTOR.
- ④ 19mm x 3050mm 3 (3/4" x 10'-0" EACH) LONG COPPER-CLAD GROUND ROD DRIVEN IN TRIAD CONFIGURATION WITH TOP 300mm (12") BELOW GRADE. PER NEC SECTION 250.

**B1 BUILDING GROUNDING ELECTRODE SYSTEM**  
NO SCALE



**A1 TRANSFORMER SLAB & GROUNDING DETAIL**  
NO SCALE

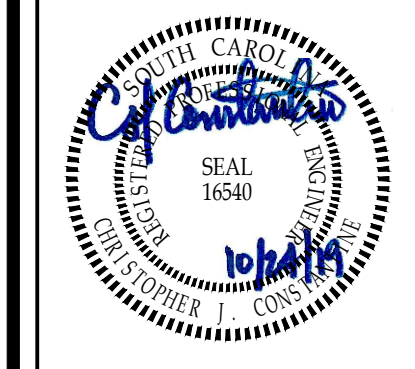
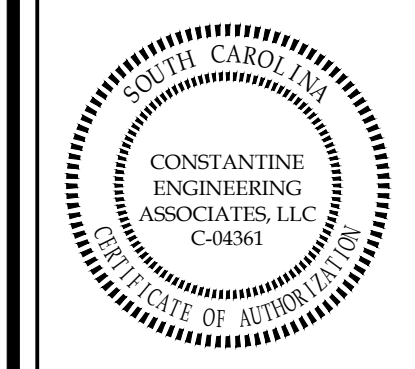


- NOTES:
1. PAD IS TO BE SPOTTED BY SCE&G REPRESENTATIVE BEFORE FORMING OR POURING CONCRETE. REFERENCE SCE&G DRAWING 17.01-01D FOR CLEARANCE AND ACCESS REQUIREMENTS.
  2. PAD MUST BE BUILT TO DIMENSIONS GIVEN AND CONDUITS MUST BE INSTALLED CORRECTLY.
  3. PAD FOUNDATION MUST SUPPORT THE WEIGHT OF THE TRANSFORMER (SEE DRAWING 17.02-01C). IF SOIL CONDITION WILL NOT SUPPORT THE WEIGHT (POUNDS PER SQUARE FOOT) AS GIVEN IN TABLE, THEN THE AREA OF THE PAD MUST BE INCREASED OR PILINGS INSTALLED TO MEET THE WEIGHT REQUIREMENT.
  4. STEEL REINFORCING REBAR SHALL BE INTERMEDIATE GRADE BILLET STEEL WITH 40,000 PSI MINIMUM YIELD STRENGTH, CONFORMING TO ASTM A616 GRADE 40.
  5. CONCRETE OF PAD TO CONFORM TO CLASS A STRUCTURAL CONCRETE. SHALL HAVE 28 DAY STRENGTH OF 4000 PSI, CONTAIN NO MORE THAN 6 PERCENT ENTRAINED AIR AND HAVE NO LARGER THAN 1 INCH AGGREGATE MIXTURE.
  6. LIMESTONE AGGREGATE IS NOT ACCEPTABLE. ALL OTHER CONCRETE MATERIALS SHALL BE IN ACCORDANCE WITH PORTLAND CEMENT STANDARD ASTM C150.
  7. IF PAD IS LOCATED IN AREA SUBJECT TO FLOODING IT MUST BE ELEVATED ABOVE WATER LINE.
  8. CONDUITS MUST BE FLUSH OR UP TO 1 INCH ABOVE FINISHED PAD.
  9. SECONDARY CONDUIT(S) MUST NOT BE INSTALLED MORE THAN 20 INCHES FROM RIGHT EDGE OF WINDOW. CONDUIT(S) EDGE SHOULD BE MINIMUM OF 2 INCHES FROM EDGE OF WINDOW OPENING.
  10. CUSTOMER MUST PROVIDE AND MARK TWO (2) SUITABLE LOCATIONS WITHIN WINDOW FOR INSTALLATION OF 2 - 10 FOOT GROUND RODS. ONE LOCATED ON PRIMARY SIDE AND ONE ON SECONDARY SIDE.
  11. CONDUIT WINDOW MUST BE OPEN, NO REBAR, FORMS OR CONCRETE ALLOWED.
  12. SEE DRAWING 17.02-01C FOR MAXIMUM ALLOWABLE SECONDARY RUNS AND OTHER PAD INFORMATION.

EFFECTIVE DATE: 02-15-19  
**DISTRIBUTION CONSTRUCTION STANDARD**  
 SOUTH CAROLINA ELECTRIC & GAS CO.

**B3 UTILITY COMPANY TRANSFORMER PAD DETAIL**  
NO SCALE

**CONSTANTINE ENGINEERING ASSOCIATES, LLC**  
 1043B Swannah Hwy, #181, Charleston, SC 29407  
 Phone: 843.628.7878, Fax: 843.628.7881



**HANAHAN RECREATION CENTER**  
**3100 MABELINE ROAD**  
 HANAHAN, SC 29410  
 ELECTRICAL DETAILS

REVISIONS:

DESIGNED BY: CLM  
 DRAWN BY: CLM  
 CHECKED BY: CJC  
 DATE: 10/08/19

JOB NUMBER  
**19-080**

SHEET NUMBER  
**E401**