


ADDENDUM NO. 2

DATE: September 14, 2018

TO: All Bidders

FROM: Penny Owens, Assistant, Purchasing Agent 

SUBJECT: Addendum No. 2 – 600 Block of Market Street Project

PROJECT NO.: 17A-R-0625

BIDS TO BE OPENED: **September 19, 2018, at 11:00 a.m. Eastern Time**

This addendum becomes a part of the Contract Documents and modifies the original specifications as noted.

Changes to the Contract Documents & Specifications:

Revised Sheets

Revised sheets are attached to this addendum. The following is a summary of the changes made:

- 1.) Sheet 2 – Revised quantity for Item No. 714-03.01 and lighting footnote 8.
- 2.) Sheet 9 – Revised lighting footnote 8 and removed lighting footnote 10.

Clarification of Contract Documents & Specifications:

The following are responses to questions received from potential bidders:

Questions

Question #1: Has the City contacted KUB about this work? KUB is unable to determine the charges for contractors mentioned in footnote 8 on the lighting plans.

Response: The City will pay KUB directly for any charges by the utility for providing electric service to the street lights and special event boxes instead of including the cost in this bid. Lighting footnote 8 has been revised accordingly on Sheets 2 and 9 of the plans.

Question #2: What is network red wire and network conductors? Where does the network wiring extend to and from?

Response: The contractor will not have to deal with the red wire. It is used to turn the street light contactors on and off. Also, the contractor will not have to deal with the network wiring. All the contractor will have to do is furnish the meter bases (120/208v), 200a panels, street light contactor (located in V-5), and #3/0 copper conductor from the special event boxes to V-5 and V-VF. KUB will make the connections in both vaults and mount the equipment.

END OF ADDENDUM NO. 2

QUANTITIES

ITEM	DESCRIPTION	QUANTITIES	UNIT
1.10	MOBILIZATION OF FORCES, SUPPLIES AND EQUIPMENT (MAX. AMOUNT = \$14,000 + 1% CONTRACT AMOUNT)	1	L.S.
① 2.10	CLEARING AND GRUBBING	1	L.S.
② 3.10	REMOVAL OF STRUCTURES AND OBSTRUCTIONS	1	L.S.
3.20	REMOVAL OF CONCRETE STREET	1	L.S.
⑨ 4.10	EXCAVATION (UNCLASSIFIED)	100	C.Y.
4.40	BACKFILL FOR STRUCTURAL SOIL CELLS	40	C.Y.
③ 5.10	MINERAL AGGREGATE BASE	620	TON
7.10	TACK COAT	2	GAL.
9.20	BITUMINOUS PLANT MIX BASE, GRADING "B-M"	8	TON
9.50	BITUMINOUS PLANT MIX BASE, GRADING "C-S"	1	TON
10.10	ASPHALTIC CONCRETE SURFACE, GRADING "D"	2	TON
11.10	10" PORTLAND CEMENT CONCRETE PAVEMENT (PLAIN) (NATURAL SAND)	621	S.Y.
12.65	6" DETACHED CONCRETE CURB, TYPE A (NATURAL SAND)	15	L.F.
12.69	6" DOWELED CONCRETE CURB (NATURAL SAND)	600	L.F.
④ 13.10	CONCRETE SIDEWALKS (NATURAL SAND)	6,711	S.F.
13.11	4" THICK CONCRETE PAVING (COLORED AND STAMPED)	878	S.F.
13.20	CONCRETE DRIVEWAYS (NATURAL SAND)	710	S.F.
17.11	WATER PROOFING	500	S.F.
⑤ 21.20	FILTER CLOTH UNDERDRAIN w/ PIPE (4" HDPE)	311	L.F.
22.18	ADJUST ROOF DRAINS	1	EACH
23.10	POWER VAULT FRAME ADJUSTMENTS	1	L.S.
23.20	CATCH BASIN ADJUSTMENT	2	EACH
23.30	REMOVAL OF UTILITY VAULT	1	EACH
26.10	PLANTING SOIL FOR STRUCTURAL CELLS	70	C.Y.
30.20	HARDWOOD MULCH (3")	2	C.Y.
31.10	EROSION PREVENTION AND SEDIMENT CONTROL	1	L.S.
34.10	CONSTRUCTION AREA TRAFFIC CONTROL	1	L.S.
36.10	GEOTEXTILE FILTER FABRIC FOR STRUCTURAL CELLS	345	S.Y.
40.20	PREFORMED THERMOPLASTIC PAVEMENT MARKING (CROSSWALK STRIPING)	45	L.F.
40.30	PREFORMED THERMOPLASTIC PAVEMENT MARKING (STOP LINE)	18	L.F.
⑥ 63.10	SIGNAGE	1	L.S.
⑦ 64.10	HANDRAIL AT STEPS (600 MARKET STREET)	1	L.S.
70.20	TACTILE WARNING SYSTEM, CAST-IN-PLACE	5	EACH
⑧ 71.10	STRUCTURAL SOIL CELL SYSTEM (16.7" DEPTH)	25	EACH
⑧ 71.20	STRUCTURAL SOIL CELL SYSTEM (43" DEPTH)	55	EACH
74.20	GEO-GRID FOR STRUCTURAL CELLS	140	S.Y.
74.30	18" ROOT BARRIER	100	L.F.

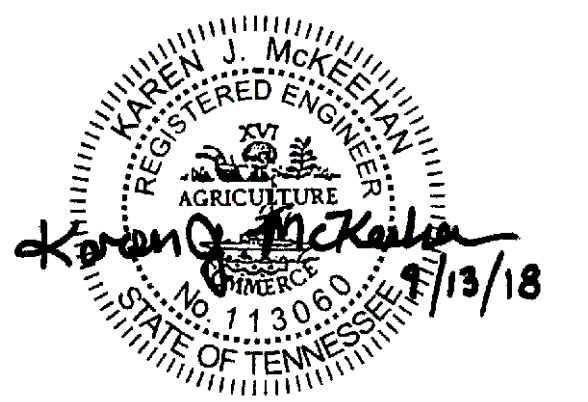
- ① Includes the removal of 8 trees and one stump. See Sheet No. 5.
- ② Includes the removal of tree wells, concrete pads, concrete bands, and brick sidewalks. See Sheet No. 5.
- ③ Includes 350 Tons for subgrade, 240 Tons for sidewalks, Alley, and driveways, and 30 Tons for Structural Soil Cell System.
- ④ To include the cost of curb ramps at roadway intersections and any incidental removal and replacement of brick to allow installation of the concrete sidewalk.
- ⑤ For joints between asphalt and concrete pavement, tie to storm sewer. Pipe will be solid from joint to catch basin.
- ⑥ To include the cost of removal and reinstallation. See Sheet No. 5.
- ⑦ To include the cost of removal and reinstallation in proposed sidewalk. See Sheet No. 5.
- ⑧ To include Excavation, Decks, Frames, Posts, and Appurtenances.
- ⑨ To be used if undercutting is necessary.

ESTIMATED LIGHTING QUANTITIES

ITEM	DESCRIPTION	QUANTITIES	UNIT
714-03.01	DIRECT BURIAL CONDUIT (2" PVC, SCHEDULE 40)	610	L.F.
714-05.02	PULL BOXES (TYPE A)	1	EACH
① 714-05.05	PULL BOXES (SPECIAL EVENT BOXES)	2	EACH
714-06.05	CABLE (1/C # 6 AWG)	2,830	L.F.
714-06.08	CABLE (#3/0)	225	L.F.
② 714-08.09	LIGHT STANDARDS (DECORATIVE w/ FOUNDATION)	10	EACH
③ 714-08.10	LIGHT STANDARDS (DECORATIVE)	1	EACH
④ 714-08.32	REMOVAL OF LIGHT STANDARD & FOUNDATION	5	EACH
⑤ 714-08.34	REMOVAL OF LIGHT STANDARD	1	EACH
⑥ 714-09.09	LUMINAIRES (60W LED)	11	EACH
⑦ 714-12.09	CONTROL CENTER (STREET LIGHT CONTRACTOR)	1	L.S.
⑧ 714-25.01	ELECTRICAL CONNECTION	1	L.S.
⑨ 714-25.02	ELECTRICAL CONNECTION (VF VAULT)	1	L.S.
⑨ 714-25.03	ELECTRICAL CONNECTION (V-5 VAULT)	1	L.S.

- ① Item includes 17" x 30" x 24" D pull box, waterproof two-point junction blocks, 5/8" x 8' copper clad ground rod, and #6 bare copper grounding conductor.
- ② Item includes 15' Holophane Columbia cast iron pole (CLC 15 FTN 20 P07 ABG BK R168B FGIUS_S BK), or approved equivalent, associated hardware, and pole foundation.
- ③ Item includes 15' Holophane Columbia cast iron pole (CLC 15 FTN 20 P07 ABG BK R168B FGIUS_S BK), or approved equivalent, associated hardware.
- ④ Item includes removal of luminaire, bracket arm, pole, foundation, and delivery of removed equipment to City of Knoxville. See Note 26, Sheet 9A.
- ⑤ Item includes removal of luminaire, decorative pole, and delivery of removed equipment to City of Knoxville. See Note 26, Sheet 9A.
- ⑥ Luminaire shall be Holophane Utility Washington Postlite LED 2 (WAUE2P3030KASBK5BK4HNL1X1-MOD RFD281080), or approved equivalent.
- ⑦ Item includes trinetics MR-XD SPEC 6283, or approved equivalent. Contractor to furnish. KUB to install in vault V-5.
- ⑧ Includes conduit, cable, and other items necessary for connection of street lights. Item also includes provisions for temporary service to the existing street lights, if needed.
- ⑨ Includes special event electrical panel, meter box, conduit, and conductors as shown on Sheet 9A. Contractor to furnish material, KUB to install in vault.

PROJECT No.	YEAR	SHEET No.	
17A-R-0625	2017	2	
REVISIONS			
No.	DATE	BY	BRIEF DESCRIPTION
1	9-5-2018	K.M.	Changed Items 4.10 and 23.30, added 4.40 and 17.11, and added (Natural Sand) to 11.10, 12.65, 12.69, and 13.20. Added Excavation to Quantities.
			Removed Lighting Items 714-03.01 and 714-03.10. Added Items 714-05.02, 714-05.05, 714-06.05, and 714-06.08. Revised Lighting Footcandle through 9.
2	9-13-2018	K.M.	Changed Quantity of Item 714-03.01, revised footnote No. 9.

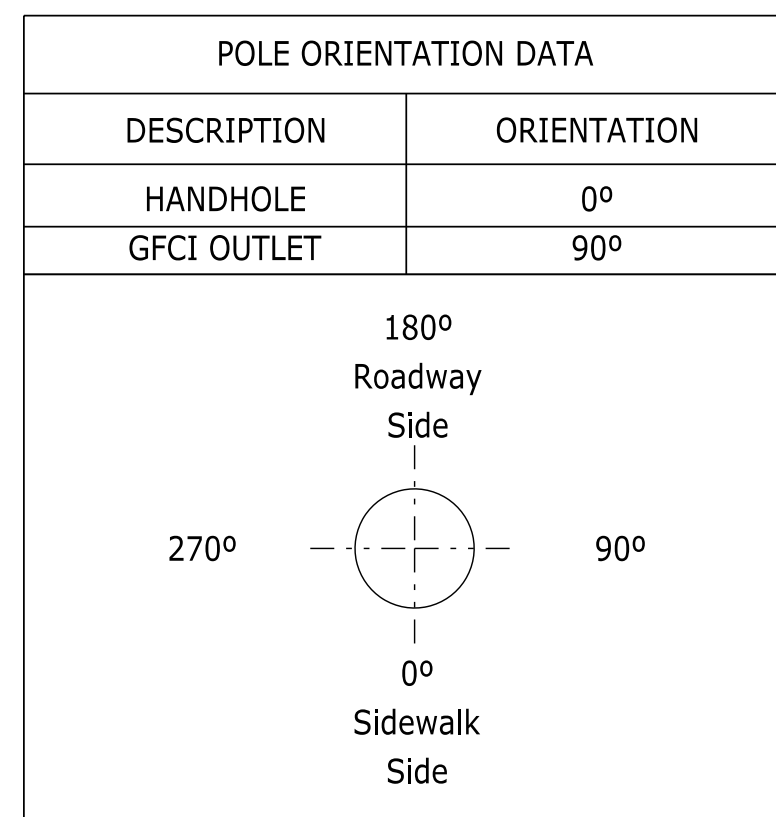
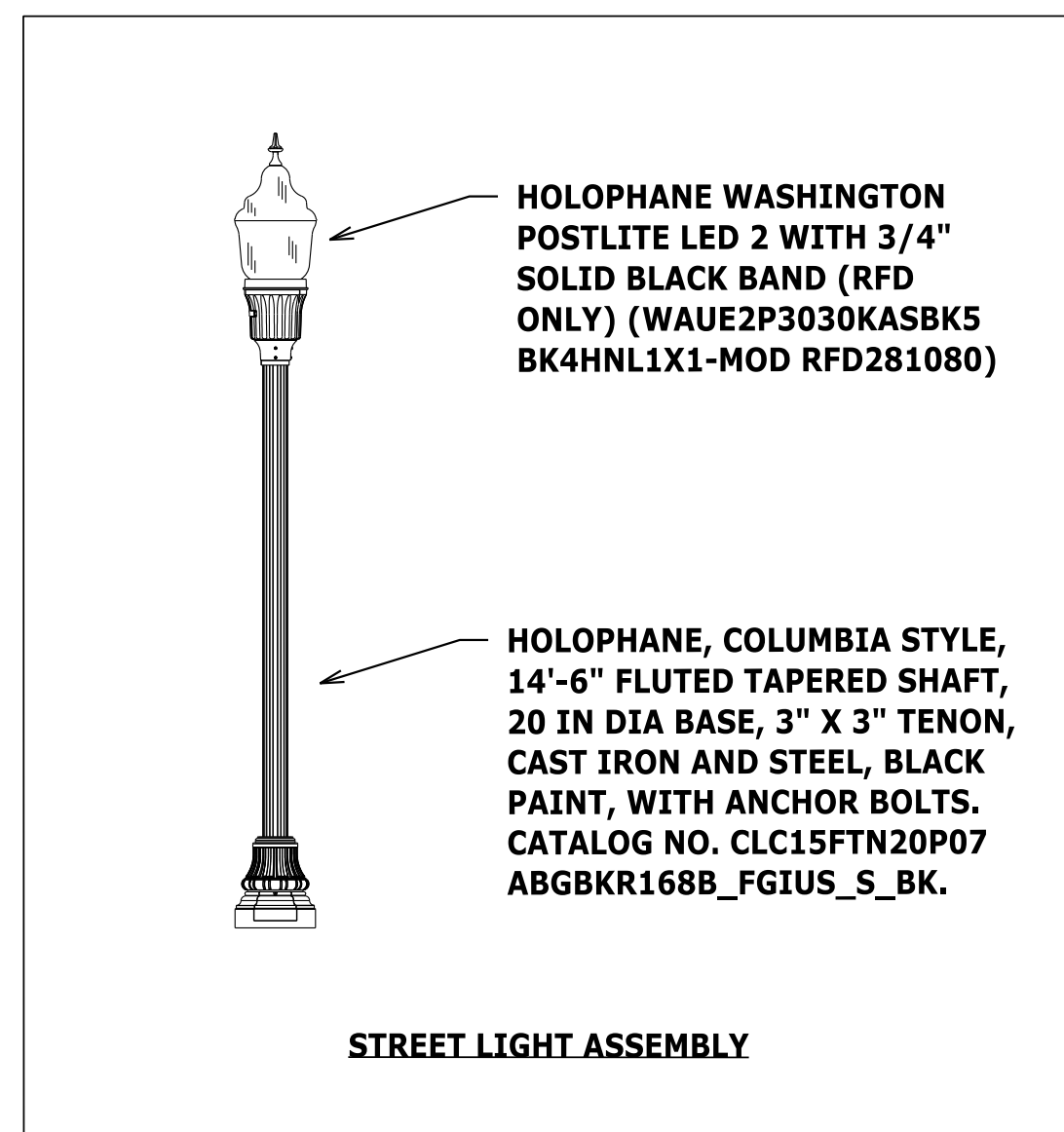
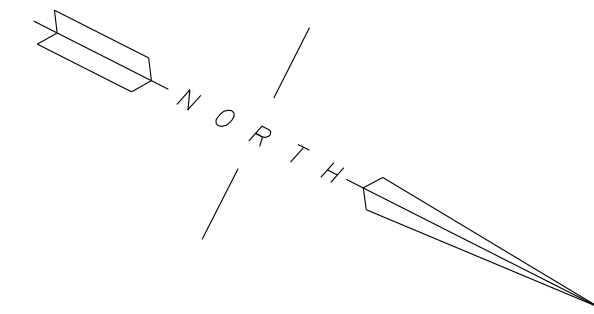


CITY OF KNOXVILLE DEPARTMENT OF ENGINEERING	DRAWN: R.W. DESIGNED: K.M. DATE: 8-17-2018 CHECKED: S.F. APPROVED: T.C.
ESTIMATED QUANTITIES	
600 BLOCK OF MARKET STREET	

GRID NORTH OF THE TENNESSEE COORDINATE SYSTEM OF NAD 83 (NSRS2007) BASED ON A BEARING OF N 11° 22' 00" W FROM CITY OF KNOXVILLE SURVEY CONTROL STATION No. 0311 TO STATION No. 0565.

(Coordinates listed hereon are project datum adjusted and are not Tennessee grid coordinates.)

(Distances have not been reduced to grid distances.)



LUMINAIRE SCHEDULE					
QUANTITY	DESCRIPTION	CATALOG NUMBER	WATTAGE	IES FILE	LLF
11	HOLOPHANE WASHINGTON POSTLITE LED 2	WAUE2P3030KASBK5BK4HNL1X1-MOD RFD281080	60	WAUE2_P30_30K_AS_5.ies	0.9

ILLUMINATION RESULTS					
SECTION	AVG.	MAX.	MIN.	MAX/MIN	AVG/MIN
EAST SIDEWALK	1.4 fc	3.1 fc	0.6 fc	5.2 : 1	2.3 : 1
MARKET STREET	1.4 fc	2.5 fc	0.7 fc	3.6 : 1	1.9 : 1
WEST SIDEWALK	1.1 fc	1.6 fc	0.7 fc	2.3 : 1	1.6 : 1

ILLUMINATION RESULTS BASED ON LUMINAIRES SPECIFIED IN LUMINAIRE SCHEDULE.

PROJECT No.	YEAR	SHEET No.
17A-R-0625	2018	9

REVISIONS			
No.	DATE	BY	BRIEF DESCRIPTION
1	8/30/18	RB	Revised electrical design and quantities.
2	9/13/18	RB	Revised footnote # 8. Removed footnote # 10.

11

12

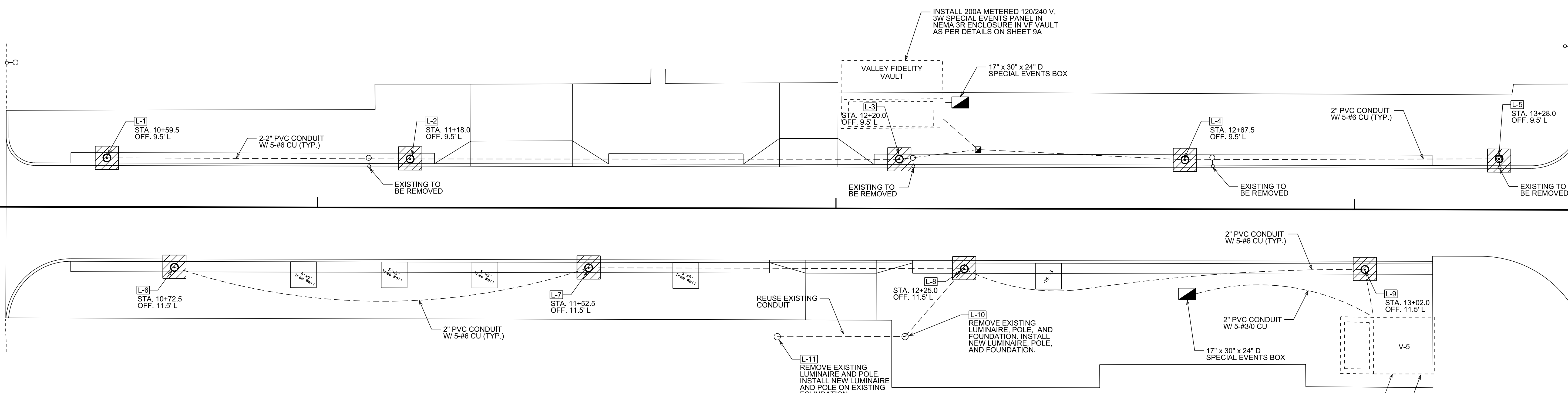
13

AVENUE

AVENUE

W CHURCH

CLINCH



ESTIMATED LIGHTING QUANTITIES			
ITEM NO.	DESCRIPTION	UNIT	QUANTITY
714-03.01	DIRECT BURIAL CONDUIT (2" PVC, SCHEDULE 40)	L.F.	610
714-05.02	PULL BOXES (TYPE A)	EACH	1
714-05.05	PULL BOXES (SPECIAL EVENT BOXES)	EACH	2
714-06.05	CABLE (1/C # 6 AWG)	L.F.	2,830
714-06.08	CABLE (#3/0)	L.F.	225
714-08.09	LIGHT STANDARDS (DECORATIVE W/ FOUNDATION)	EACH	10
714-08.10	LIGHT STANDARDS (DECORATIVE)	EACH	1
714-08.32	REMOVAL OF LIGHT STANDARD & FOUNDATION	EACH	5
714-08.34	REMOVAL OF LIGHT STANDARD	EACH	1
714-09.09	LUMINAIRES (60W LED)	EACH	11
714-12.09	CONTROL CENTER (STREET LIGHT CONTACTOR)	LS	1
714-25.01	ELECTRICAL CONNECTION	LS	1
714-25.02	ELECTRICAL CONNECTION (VF VAULT)	LS	1
714-25.03	ELECTRICAL CONNECTION (V-5 VAULT)	LS	1

FOOTNOTES:

- ITEM INCLUDES 17" X 30" X 24" D PULL BOX, WATERPROOF TWO-POINT JUNCTION BLOCKS, 5/8" X 8" COPPER CLAD GROUND ROD, AND #6 BARE COPPER GROUNDING CONDUCTOR.
- ITEM INCLUDES 15' HOLOPHANE COLUMBIA CAST IRON POLE (CLC 15 FTN 20 P07 ABG BK R168B FGIUS_S BK), OR APPROVED EQUIVALENT, ASSOCIATED HARDWARE, AND POLE FOUNDATION.
- ITEM INCLUDES 15' HOLOPHANE COLUMBIA CAST IRON POLE (CLC 15 FTN 20 P07 ABG BK R168B FGIUS_S BK), OR APPROVED EQUIVALENT, AND ASSOCIATED HARDWARE.

FOOTNOTES (CONT):

- ITEM INCLUDES REMOVAL OF LUMINAIRE, BRACKET ARM, POLE, FOUNDATION, AND DELIVERY OF REMOVED EQUIPMENT TO CITY OF KNOXVILLE. SEE NOTE 26, SHEET 9A.
- ITEM INCLUDES REMOVAL OF LUMINAIRE, DECORATIVE POLE, AND DELIVERY OF REMOVED EQUIPMENT TO CITY OF KNOXVILLE. SEE NOTE 26, SHEET 9A.
- LUMINAIRE SHALL BE HOLOPHANE UTILITY WASHINGTON POSTLITE LED 2 (WAUE2P3030KASBK5BK4HNL1X1-MOD RFD281080), OR APPROVED EQUIVALENT.
- ITEM INCLUDES TRINETICS MR-XD SPEC 6283, OR APPROVED EQUIVALENT. CONTRACTOR TO FURNISH. KUB TO INSTALL IN VAULT V-5.
- INCLUDES CONDUIT, CABLE, AND OTHER ITEMS NECESSARY FOR CONNECTION OF STREET LIGHTS. ITEM ALSO INCLUDES PROVISIONS FOR TEMPORARY SERVICE TO THE EXISTING STREET LIGHTS, IF NEEDED.
- INCLUDES SPECIAL EVENT ELECTRICAL PANEL, METER BOX, CONDUIT, AND CONDUCTORS AS SHOWN ON SHEET 9A. CONTRACTOR TO FURNISH MATERIAL, KUB TO INSTALL IN VAULT.

LEGEND	
	EXISTING STREET LIGHT
	PROPOSED STREET LIGHT
	PROPOSED LIGHT FOUNDATION (APPROX.)
	PROPOSED CONDUIT
	PROPOSED SPECIAL EVENTS BOX
	PROPOSED LIGHTING PULL BOX

Location of all underground utilities shown hereon are approximate and are based on field location of visible structures such as catch basins, manholes, water gates, etc. and compiling information from utility company plans. The utilities shown hereon may not comprise all of the existing utilities in this area, either in service or abandoned. In accordance with the Underground Utility Damage Prevention Act, prior to any excavation work call Tennessee One Call System, Inc. at 1-800-351-1111.



CITY OF KNOXVILLE
DEPARTMENT OF ENGINEERING

PROPOSED LIGHTING
600 BLOCK OF MARKET STREET

SCALE: 1" = 10'

DRAWN: T.S.N.
DATE: 08-17-2018
CHECKED: R.C.B.

88f11enome\$pp1otted_by\$stoday