



Dr. Scott J. Mercer, Superintendent

Spartanburg School District Two Administrative Offices

3231 Old Furnace Road

Chesnee, SC 29323

(864) 578-0128

www.spartanburg2.k12.sc.us

SCHOOL DIRECTORY

Boiling Springs Elementary

Michelle Kimbrell, Principal
700 Double Bridge Road
Boiling Springs, SC 29316
578-1231

Boiling Springs Intermediate

Tammy Greer, Principal
2055 Hanging Rock Road
Boiling Springs, SC 29316
578-2884

Boiling Springs Middle

Penny Atkinson, Principal
4801 Highway 9
Inman, SC 29349
578-5954

Boiling Springs High 9th Grade Campus

Kristi Woodall, Principal
3655 Boiling Springs Road
Boiling Springs, SC 29316
578-2610

Boiling Springs High

Chuck Gordon, Principal
2251 Old Furnace Road
Boiling Springs, SC 29316
578-8465



Carlisle-Foster's Grove Elementary

Cathy Garner, Principal
625 Foster's Grove Road
Chesnee, SC 29323
578-2215

Chesnee Elementary

Deana Watson, Principal
985 Fairfield Road
Chesnee, SC 29323
461-7322

Chesnee Middle

Robert L. Hayes, Principal
805 South Alabama Avenue
Chesnee, SC 29323
461-3900

Chesnee High

Thomas Ezell, Principal
795 South Alabama Avenue
Chesnee, SC 29323
461-7318

Cooley Springs-Fingerville Elementary

Amanda Ehlich, Principal
140 Cooley Springs School Road
Chesnee, SC 29323
592-1211

Swofford Career Center

Scott Simpkins, Director
5620 Highway 11
Inman, SC 29349
592-2790

Hendrix Elementary

Tina Humphries, Principal
1084 Springfield Road
Boiling Springs, SC 29316
216-4000

Mayo Elementary

Cassandra Davis, Principal
P.O. Box 130, 1300 Springdale Road
Mayo, SC 29368
461-2622

Oakland Elementary

Lora McKillop, Principal
151 Mud Creek Road
Inman, SC 29349
814-3870

Rainbow Lake Middle

Greg Lovelace, Principal
1951 Riveroak Road
Chesnee, SC 29323
253-5700

Shoally Creek Elementary

Laura Meyer, Principal
3777 Parris Bridge Road
Boiling Springs, SC 29316
594-3200



BOARD OF TRUSTEES

Trustee	Current Term	Trustee	Current Term
Connie J. Smith, Chair	12/13-11/17	Johnny Jackson	04/17-11/19
Joyce M. Wright, Vice Chair	12/13-11/17	Jack A. Mabry, Jr.	12/13-11/17
Harriette J. Hipp, Secretary	12/13-11/17	Craig Sims	12/13-11/17
David Garner	12/15-11/19	Sara R. Simmons	12/15-11/19
Angie K. Horton	12/15-11/19	Rachel Smith Yelton	12/15-11/19

Bus Delay Information Line

342-2046

When a bus is running late, a recorded update is accessible at 342-2046.

For additional information, call the Transportation Office at 500-0504



Imagery ©2018 DigitalGlobe, U.S. Geological Survey, USDA Farm Service Agency, Map data ©2018 Google

200 ft

BSH



Imagery ©2018 DigitalGlobe, U.S. Geological Survey, USDA Farm Service Agency, Map data ©2018 Google

200 ft

FRC & BSH 9



Boiling Springs Elementary



Google

Imagery ©2018 DigitalGlobe, U.S. Geological Survey, USDA Farm Service Agency, Map data ©2018 Google

200 ft

BSFE



Imagery ©2018 DigitalGlobe, U.S. Geological Survey, USDA Farm Service Agency, Map data ©2018 Google

100 ft

Hendrix



Imagery ©2018 DigitalGlobe, U.S. Geological Survey, USDA Farm Service Agency, Map data ©2018 Google

100 ft

BSI

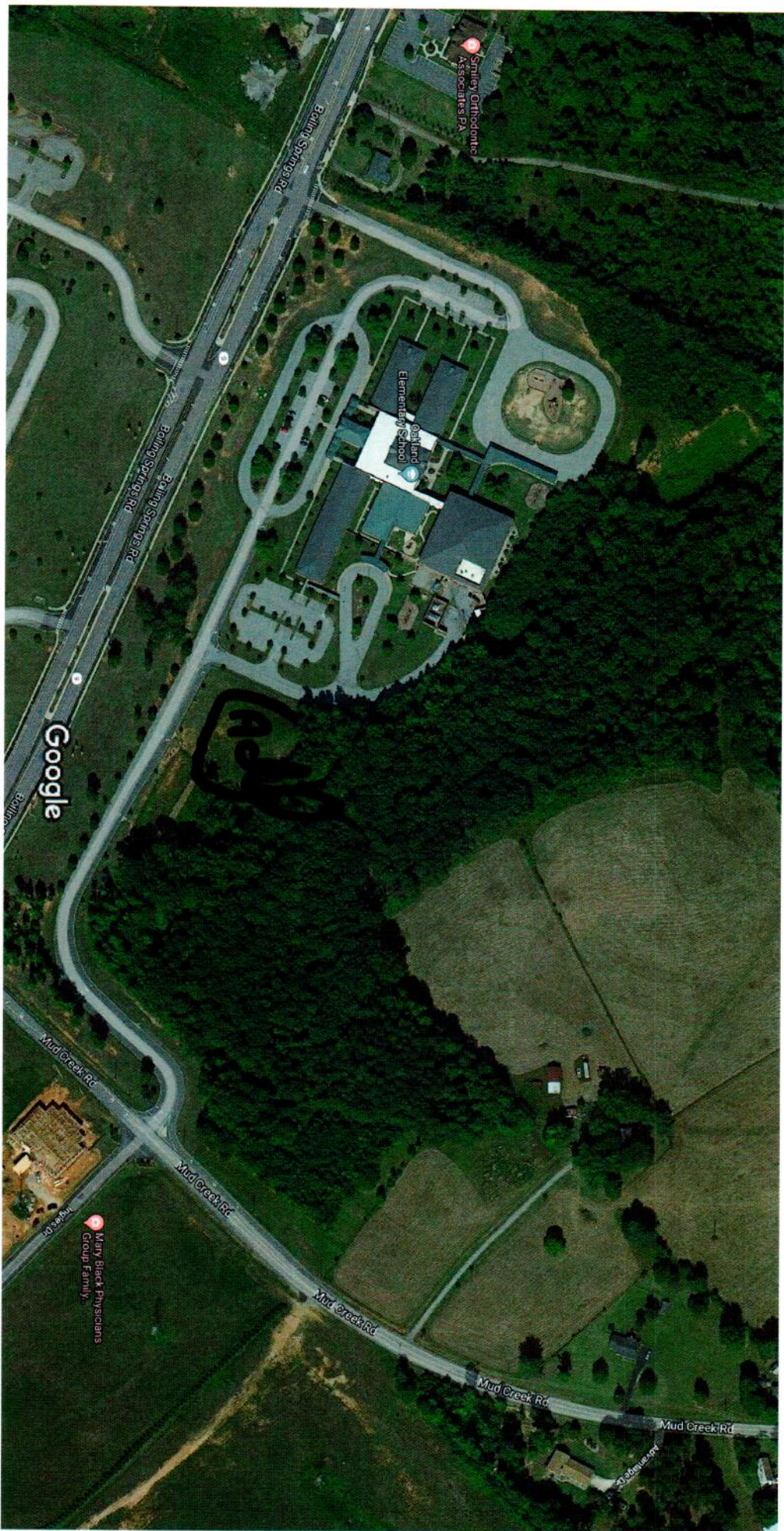


Imagery ©2018 DigitalGlobe, U.S. Geological Survey, USDA Farm Service Agency, Map data ©2018 Google

200 ft

Google

RBL



Imagery ©2018 DigitalGlobe, U.S. Geological Survey, USDA Farm Service Agency, Map data ©2018 Google

100 ft

Oakland

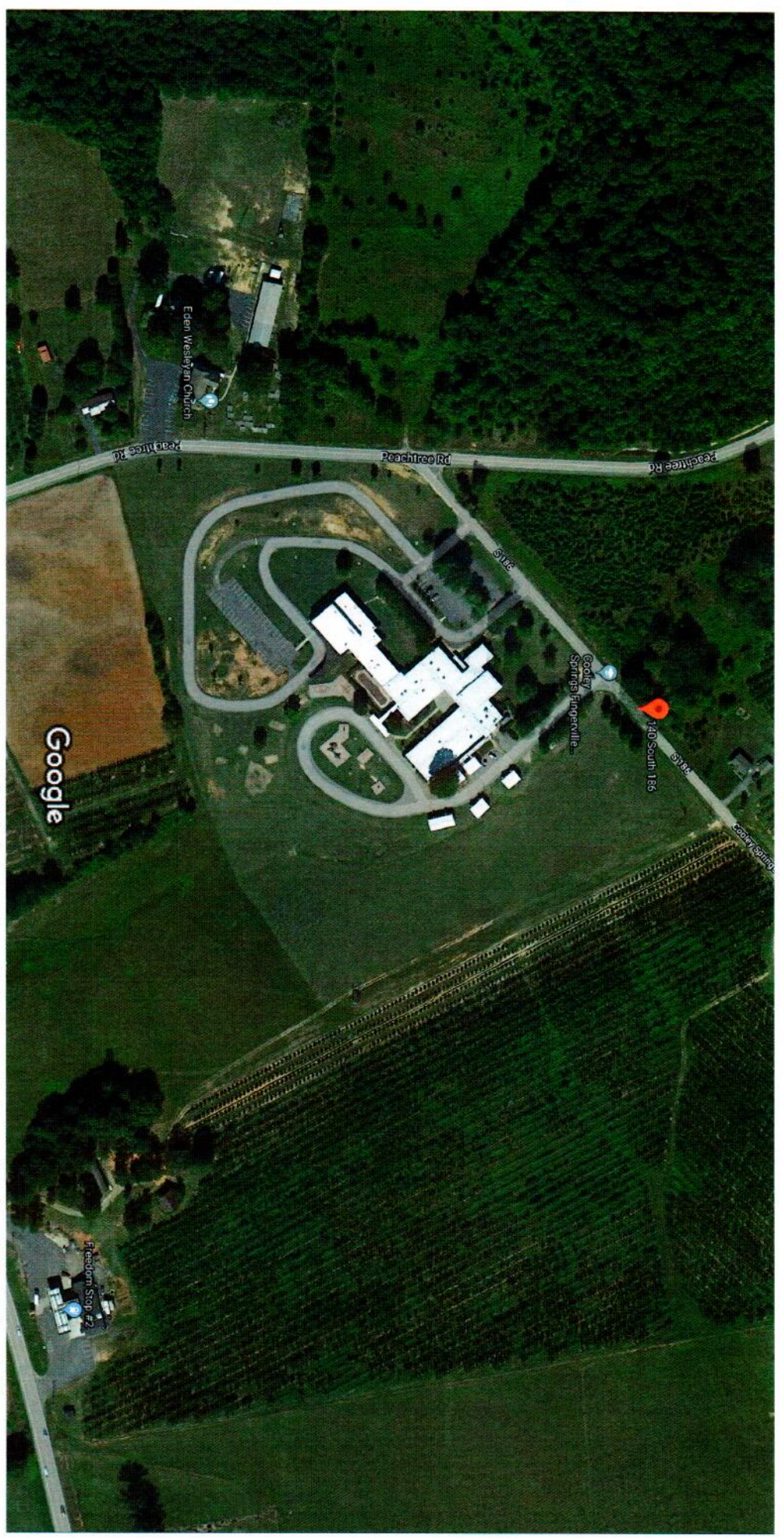


Imagery ©2018 DigitalGlobe, U.S. Geological Survey, USDA Farm Service Agency, Map data ©2018 Google

BSM

Google Maps 140 Cooley Springs School Rd

CSF



Imagery ©2018 DigitalGlobe, U.S. Geological Survey, USDA Farm Service Agency, Map data ©2018 Google

100 ft

Google Maps

985 Fairfield Rd

CES



Google

Imagery ©2018 DigitalGlobe, U.S. Geological Survey, USDA Farm Service Agency, Map data ©2018 Google

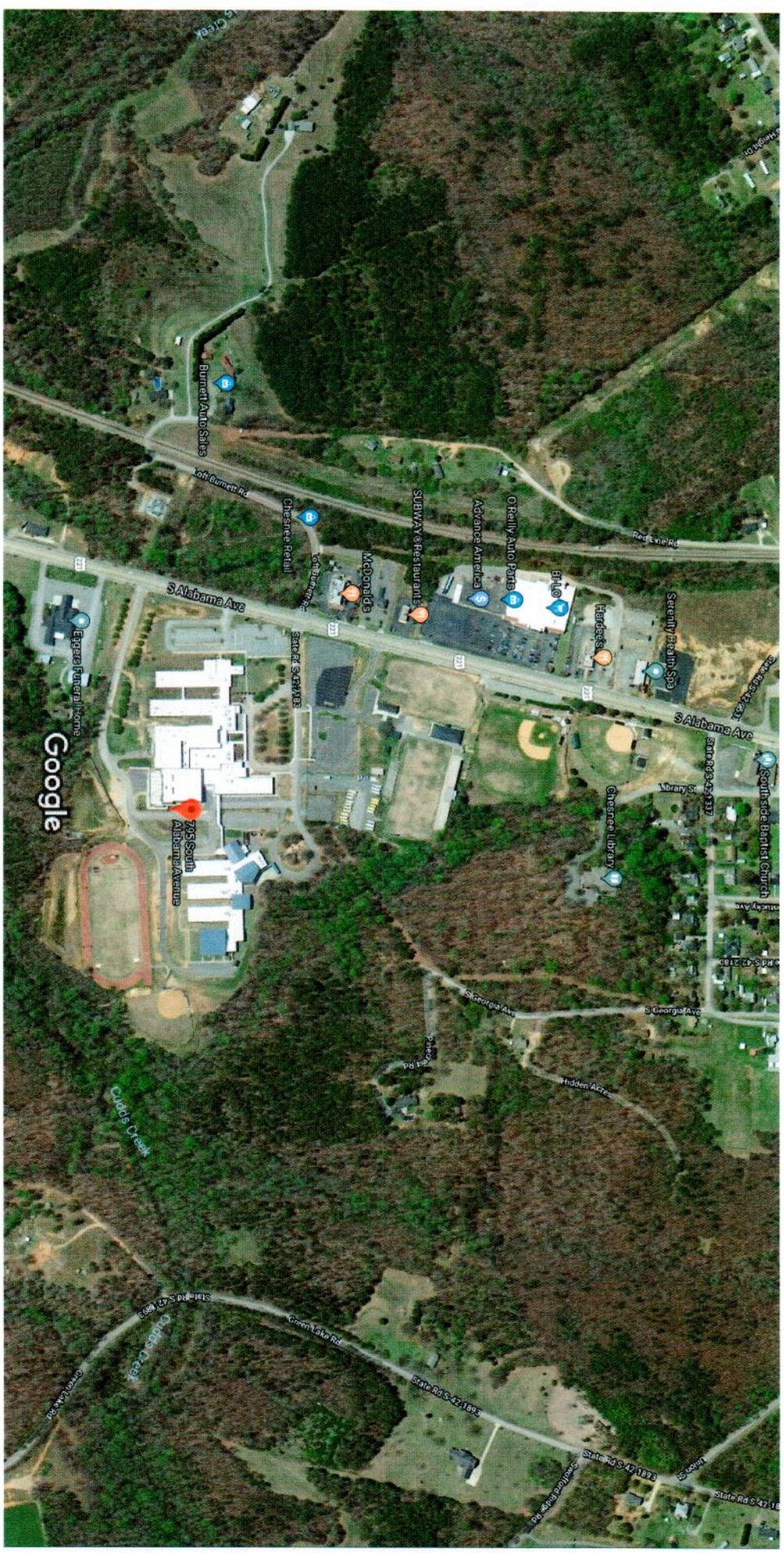
100 ft



Google Maps

795 S Alabama Ave

CHS & CMS



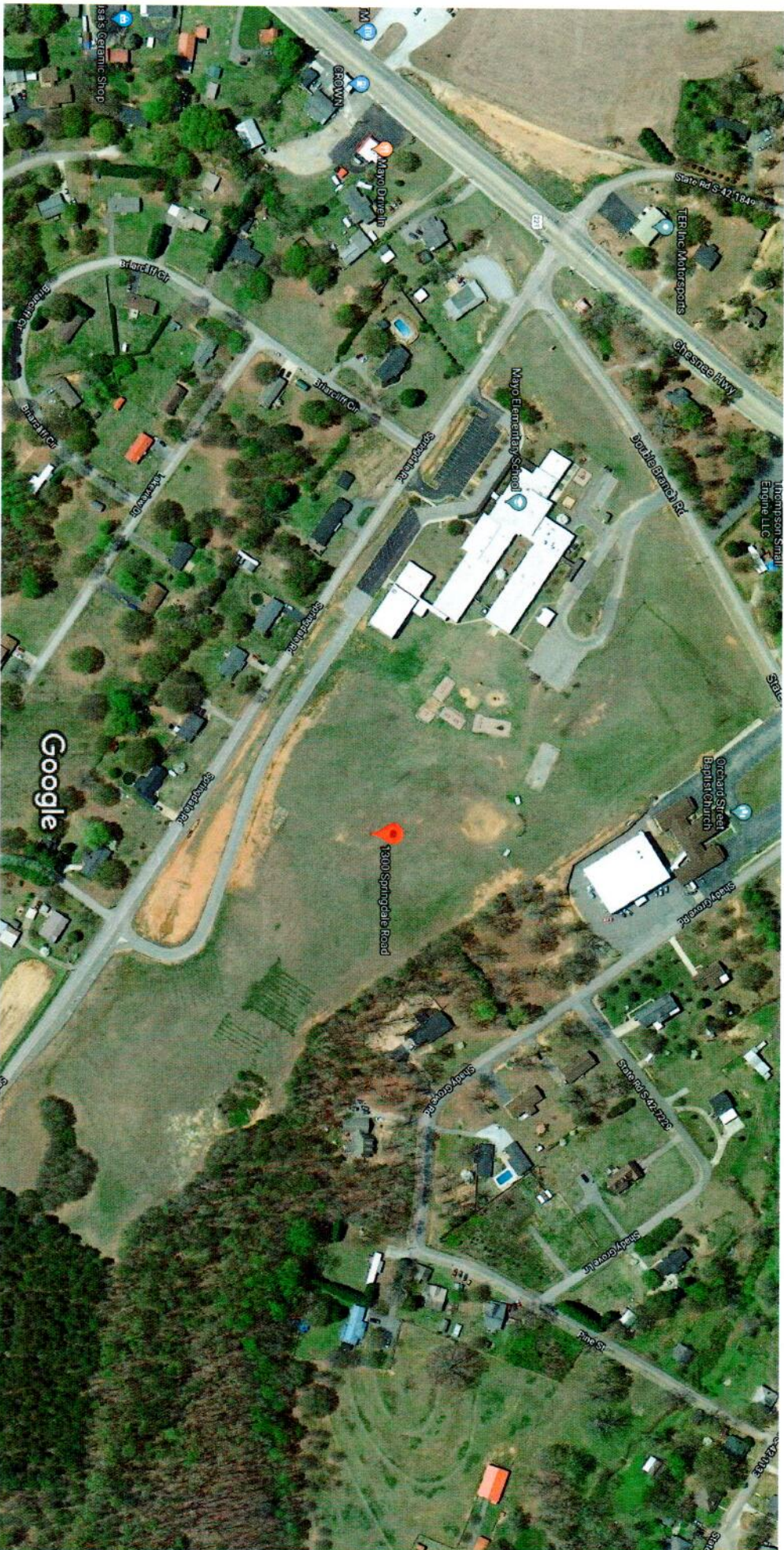
Imagery ©2018 DigitalGlobe, U.S. Geological Survey, USDA Farm Service Agency, Map data ©2018 Google

200 ft

Google Maps

1300 Springdale Rd

MES



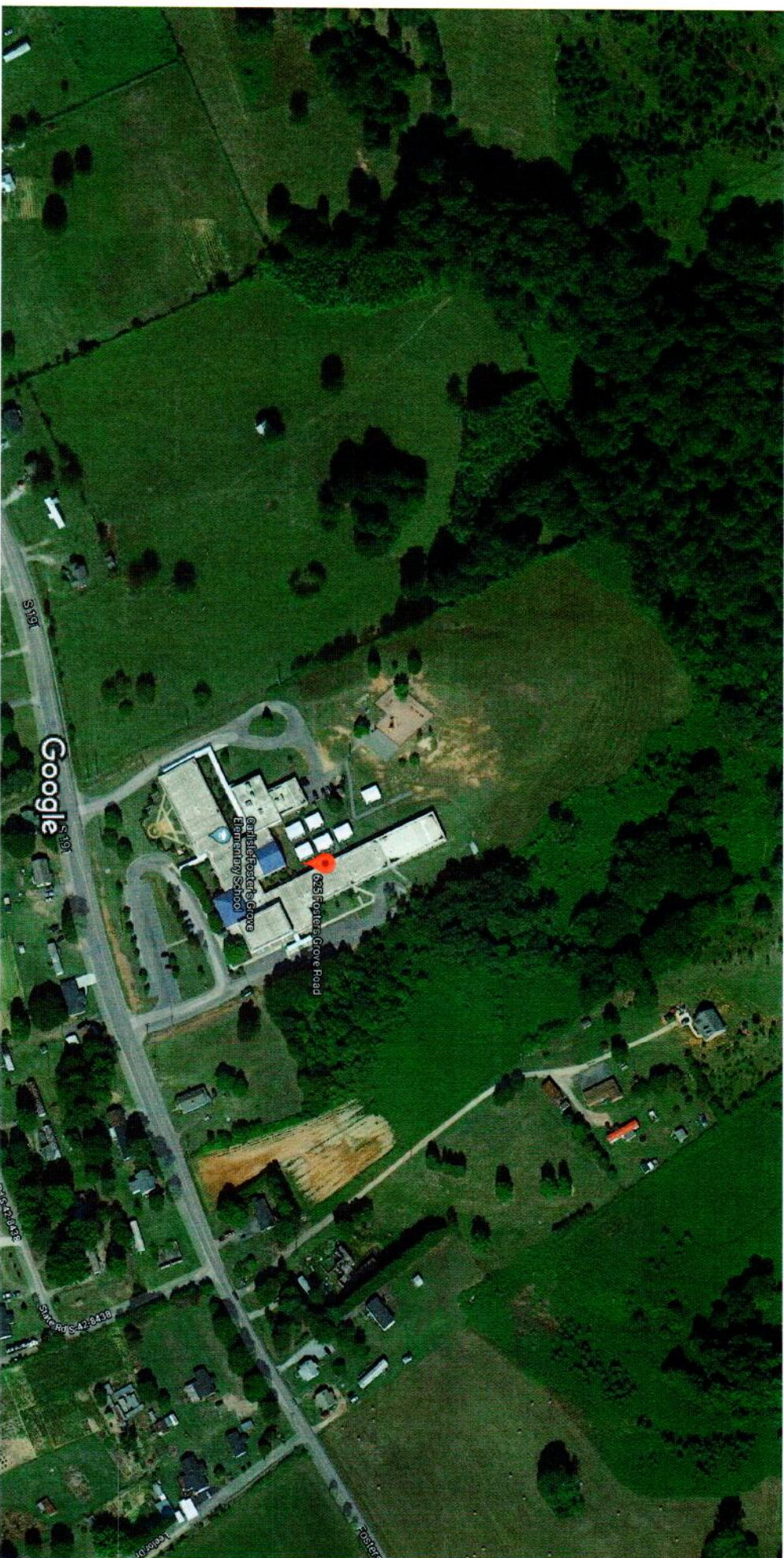
Imagery ©2018 DigitalGlobe, U.S. Geological Survey, USDA Farm Service Agency, Map data ©2018 Google

100 ft



625 Fosters Grove Rd

CFE

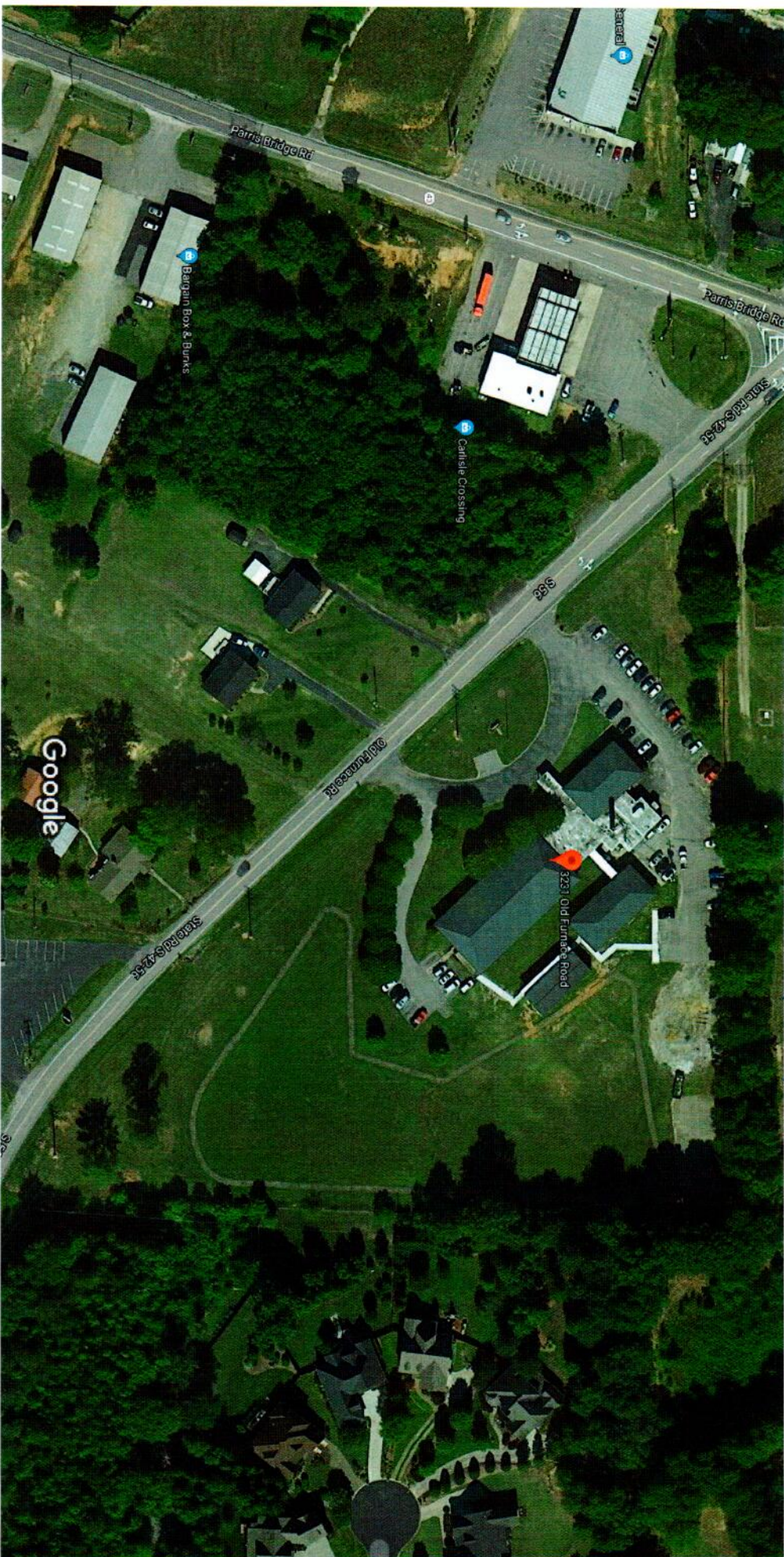


Imagery ©2018 DigitalGlobe, U.S. Geological Survey, USDA Farm Service Agency, Map data ©2018 Google

100 ft

3231 Old Furnace Rd

District Office



Imagery ©2018 DigitalGlobe, U.S. Geological Survey, Map data ©2018 Google

50 ft



Imagery ©2018 DigitalGlobe, U.S. Geological Survey, USDA Farm Service Agency, Map data ©2018 Google

200 ft

Shoaly Creek