



ROBERT G. CAMPBELL & ASSOCIATES, L.P.

7523 Taggart Lane
Knoxville, TN 37938
(865) 947-5996
Fax (865) 947-7556

2540 Sand Pike Blvd., Suite 3
Pigeon Forge, TN 37863
(865) 366-2516
Fax (865) 947-7556

ADDENDUM #2

**ISSUED FEBRUARY 20, 2019 FOR BIDDERS OF
NORRIS FREEWAY CONVENIENCE CENTER
RGCA PROJECT NO. 18702
BID NO. 4928**

The purpose of the subject Addendum No. 2 is to A) Provide updated grading and drainage plan, B) Include updated electrical plans and details, and C) Provide answers to questions.

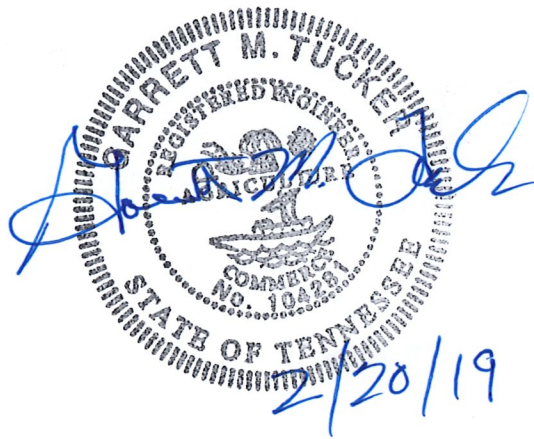
CONTRACT DOCUMENTS

1. Revised Plan Sheet 4
2. Revised Plan Sheets E1 and E2

Unanswered Questions

1. Will CUB be bringing the 3-phase power to the site as shown on the electrical plan? *Yes. Upon the successful bid, the appointed contractor will schedule an on-site, in the field, appointment with CUB once the driveway is built to determine the route we will be going with power on the property.*
2. Please verify that the Service Riser on the new Utility Pole is 4" w/ 4- 400 MCM. *See revised plan sheets E1 & E2.*
3. Please clarify gear enclosures to be 3R, 4XSS or 12 SS. *See revised plan sheets E1 & E2.*
4. E1, Note #6: Please verify cable size. *See revised plan sheets E1 & E2.*
5. What size is the existing water line? *Per ACWA the existing water line is 8" PVC*
6. Who provides the water meter? *The water meter is included in the \$900 tap fee.*

7. Detail section 2 on sheet 13 shows 1-1/2" diameter studs on the compactor skids. This is an odd size, would 7/8" or 3/4" studs be allowed? *A diameter of 1" is the minimum size that will be accepted.*
8. Can the compactor skid rails be installed in sections? If so, do the sections need to be welded together? *No, the skid rails are to be one continuous piece.*
9. Does the lower dumpster pad receive skid rails like the upper pads? *No.*
10. Where is the pond overflow spillway and level spreader located?
See revised Plan Sheet 3.



END OF ADDENDUM

LEGEND

SF * SF * SF SILT FENCE

CE CONSTRUCTION EXIT

IP STORM DRAIN INLET PROTECTION

OP STORM DRAIN OUTLET PROTECTION

OVERLAND DRAINAGE PATTERN

MA EROSION CONTROL MATTING

CD ROCK CHECK DAM

EXISTING GRADE

PROPOSED GRADE

IP IRON PIN FOUND

PIPE PIPE FOUND

G.V. GAS VALVE

W.M. WATER METER

MANHOLE

SIGN

W.V. WATER VALVE

FIRE HYDRANT

POWER/TELEPHONE

GUY WIRE

- CONSTRUCTION SEQUENCE
- 1) GRADE DETENTION POND, INSTALL OUTLET STRUCTURE, SEED & STABILIZE SLOPES.
 - 2) ROUGH GRADE ACCESS ROAD AND BUILDING PADS.
 - 3) PAVE ACCESS ROADS, CONCRETE COMPACTOR PADS.
 - 4) INSTALL UTILITIES.
 - 5) SEED ALL DISTURBED AREAS FOR PERMANENT VEGETATION.

- NOTES:
- 1) ALL EROSION PREVENTION AND SEDIMENT CONTROL BEST MANAGEMENT PRACTICES IDENTIFIED IN THIS SWPPP WILL BE INSTALLED AS RECOMMENDED IN THE TENNESSEE EROSION AND SEDIMENT CONTROL HANDBOOK.
 - 2) TOPSOIL WILL BE REMOVED AND EITHER TEMPORARILY STOCKPILED FOR LATER REDISTRIBUTION OR IMMEDIATELY UTILIZED FOR FINAL COVER. CLEARING AND GRUBBING WILL BE HELD TO THE MINIMUM NECESSARY FOR GRADING AND EQUIPMENT OPERATION. TOPSOIL PILES WILL BE TEMPORARILY SEEDED.
 - 3) SEDIMENT WILL BE REMOVED FROM SILT FENCE, ROCK CHECK DAMS, HAY BALE TRAPS, AND TEMPORARY SEDIMENT TRAPS BEFORE THE DESIGN CAPACITY OF THE STRUCTURE HAS BEEN REDUCED BY 50%. LITTER, CONSTRUCTION DEBRIS, AND CONSTRUCTION CHEMICALS EXPOSED TO STORM WATER WILL BE PICKED UP PRIOR TO ANTICIPATED STORM EVENTS, OR OTHERWISE PREVENTED FROM BECOMING A POLLUTANT SOURCE FOR STORM WATER DISCHARGES. AFTER USE, SILT FENCES WILL BE REMOVED TO PREVENT THEM FROM BECOMING A POLLUTANT SOURCE FOR STORM WATER DISCHARGES. TEMPORARY MEASURES MAY BE REMOVED AT THE BEGINNING OF THE WORKDAY, BUT WILL BE REPLACED AT THE END OF THE WORKDAY.
 - 4) IN ACCORDANCE WITH THE TNCPG, INSPECTIONS WILL BE PERFORMED BY QUALIFIED PERSONNEL AT LEAST TWICE EVERY CALENDAR WEEK. INSPECTIONS WILL BE AT LEAST 72 HOURS APART. INSPECTIONS WILL INCLUDE DISTURBED AREAS OF THE CONSTRUCTION SITE, AREAS USED FOR STORAGE OF MATERIALS EXPOSED TO PRECIPITATION, STRUCTURAL CONTROL MEASURES, LOCATIONS WHERE VEHICLES ENTER AND EXIST THE SITE, AND EACH OUTFALL POINT. BASED ON INSPECTION RESULTS, MODIFICATIONS OR REPAIRS TO EXISTING CONTROL MEASURES WILL BE MADE BEFORE THE NEXT RAIN EVENT IF POSSIBLE, BUT WITHIN 7 DAYS AFTER THE NEED IS IDENTIFIED. INSPECTION DOCUMENTS WILL BE MAINTAINED ON SITE AND MADE AVAILABLE UPON REQUEST.
 - 5) STABILIZATION WILL BE ACCOMPLISHED AS SOON AS PRACTICABLE AFTER ATTAINMENT OF FINAL GRADE AND NO LATER THAN SEVEN DAYS AFTER ATTAINING FINAL GRADE. WHERE EARTH-DISTURBING ACTIVITY HAS TEMPORARILY CEASED, TEMPORARY STABILIZATION WILL BE APPLIED WITHIN SEVEN DAYS IF THE ACTIVITY WILL NOT RESUME WITHIN 15 DAYS. THE DATES WHEN MAJOR GRADING ACTIVITIES OCCUR, THE DATES WHEN CONSTRUCTION ACTIVITIES TEMPORARILY OR PERMANENTLY CEASE ON A PORTION OF THE SITE, AND THE DATES WHEN STABILIZATION MEASURES ARE INITIATED WILL BE RECORDED AND MAINTAINED ON THE SITE. STABILIZATION METHODS MAY INCLUDE SEED AND MULCH, OR SEED AND EROSION CONTROL BLANKETS.

STORM DRAINAGE SUMMARY								
FROM	ELEVATION		TO	ELEVATION		LENGTH	SLOPE	DIAMETER / MATERIAL
	GRATE	INVERT		GRATE	INVERT			
HW-1	—	928.50	CB-1	931.80	928.70	15	1.33%	15" HDPE
CB-1	931.80	928.70	CB-2	931.80	929.10	36	1.11%	15" HDPE
CB-2	931.80	929.10	HW-2	—	930.00	10	9.00%	15" HDPE
HW-3	—	923.00	OS-1	—	924.00	46	2.17%	18" RCP
NO.	DATE	DESCRIPTION					BY	CHKD.
REVISIONS								

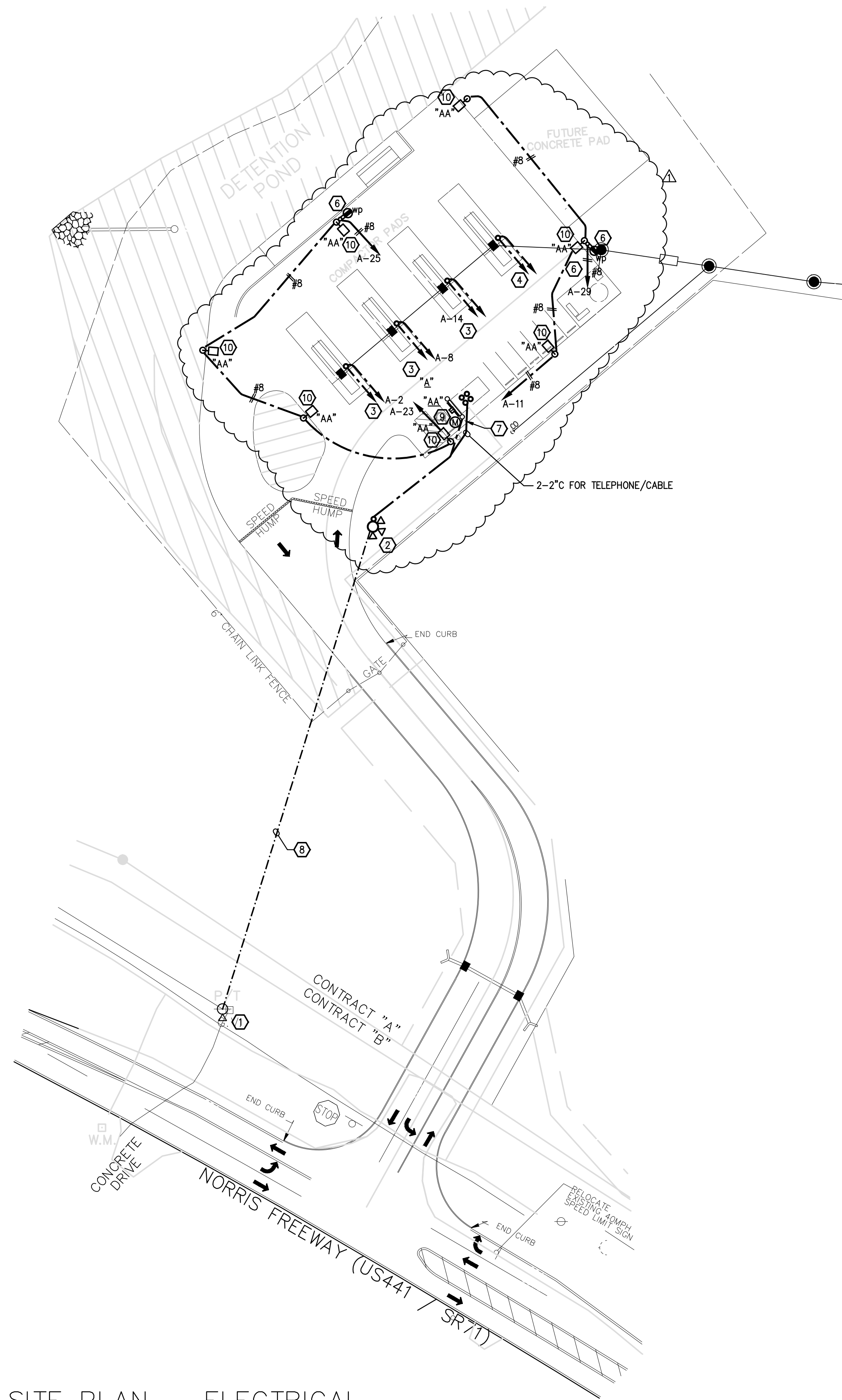


ROBERT G. CAMPBELL & ASSOC., L.P.
CONSULTING ENGINEERS
KNOXVILLE, TENNESSEE

ANDERSON COUNTY SOLID WASTE
NORRIS FREEWAY CONVENIENCE CENTER

SWPPP - STAGE 2 - GRADING PLAN
EROSION & SEDIMENT CONTROL PLAN

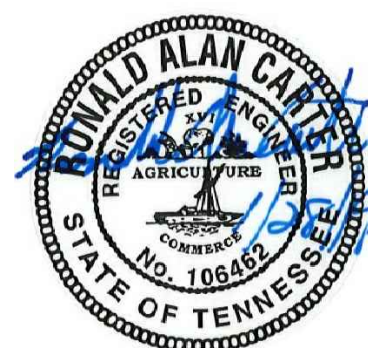
DESIGNED BY GMT	CHECKED BY RGC	SCALE 1" = 40'	SHEET NO. 4 OF NINETEEN SHEETS
DRAWN BY GMT	DATE 2-20-19	FILE NO. 18702	



SITE PLAN - ELECTRICAL
SCALE: 1"=40'-0"

- DRAWING NOTES:**
- 1 LOCATION OF EXISTING 3PHASE POWER POLE.
 - 2 LOCATION OF NEW TRANSFORMER BANK TO BE INSTALLED BY POWER CO.
 - 3 COMPACTOR 15HP, 90A, 208V, 3PH. EXTEND 1" C, 8#14 FOR CONTROLS TO OPERATIONS BUILDING. EXTEND 1" C SPARE TO OPERATIONS BUILDING AS WELL. EXTEND 1 1/4" C, 3#4, #8GND TO PANEL "A". CONTRACTOR SHALL RECONFIGURE THE COMPACTOR MOTORS TO RUN AT 208V. THEY ARE PRESENTLY CONNECTED AT 240V, 3PH.
 - 4 FUTURE COMPACTOR 90A, 208V, 3PH. EXTEND 2-1" C WITH PULL CORDS TO OPERATIONS BUILDING. EXTEND 1-1 1/4" C WITH PULL CORD TO PANEL "A" FOR FUTURE POWER. COORDINATE CONDUIT LOCATION WITH OWNER PRIOR TO ROUGHIN.
 - 5 NOT USED.
 - 6 MOUNT WEATHERPROOF RECEPTACLE AT 24" AFG ON POLE BASE. EXTEND 3/4" C, 2#8, #10GND TO PANEL "A" AND CONNECT.
 - 7 LOCATION OF RACK MOUNTED ELECTRICAL PANELS. SEE DETAIL SHEET E2. COORDINATE EXACT LOCATION WITH OWNER PRIOR TO ROUGHIN
 - 8 NEW 3 PHASE OVERHEAD PRIMARY, TELEPHONE, AND CABLE.
 - 9 PROPOSED NEW METER BASE AND SERVICE DISCONNECT.
 - 10 PROVIDE 3/4" C SPARE CONDUIT FROM OPERATIONS BUILDING TO LIGHT POLE FOR OWNER'S FUTURE CCTV CAMERAS. ONE CONDUIT HOMERUN PER POLE. COORDINATE LOCATIONS WITH OWNER PRIOR TO INSTALLING CONDUIT.

- UTILITY NOTES:**
1. ALL UNDERGROUND BENDS FOR POWER AND TELEPHONE SERVICE ENTRANCE SHALL BE LONG SWEEPS. ALL BENDS WILL BE RIGID STEEL.
 2. PRIOR TO STARTING SERVICE ENTRANCE WORK, THE CONTRACTOR SHALL CONTACT THE POWER COMPANY AND THE LOCAL TELEPHONE COMPANY AND SHALL DETERMINE ALL REQUIREMENTS OF EACH UTILITY. PROVIDE NECESSARY LABOR AND MATERIALS UNDER THE CONTRACT TO INSTALL EACH SERVICE ENTRANCE COMPLETE. CONTRACTOR SHALL PAY ALL FEES & CONTRIBUTIONS TO CONSTRUCTION REQUIRED BY EACH UTILITY. THE CONTRACTOR'S TELEPHONE SERVICE ENTRANCE SHALL BE SUPPLIED WITH A NYLON PULLCORD FOR FUTURE INSTALLATION.

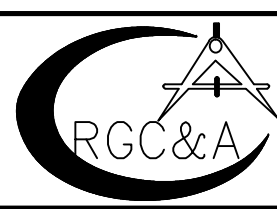


CALL BEFORE DIGGING
TENNESSEE ONE CALL - CALL THREE BUSINESS DAYS BEFORE DIGGING. - PH. 1-800-351-1111

ENGINEERS INC
5417 Ball Camp Pike
Knoxville, TN 37921
Phone: (865) 588-2431
Fax: (865) 588-2434
West, Welch, Reed Engineers, Inc.
WWR PROJECT# 119003

THIS DRAWING IS GENERALLY DIAGRAMMATIC AND, EXCEPT WHERE SPECIFICALLY DIMENSIONED OR DETAILED, INDICATES THE GENERAL ARRANGEMENT OF THE WORK. THE CONTRACTOR SHALL INSTALL HIS WORK TO CONFORM AS NEARLY AS POSSIBLE TO THE LOCATIONS AND ARRANGEMENTS SHOWN, WITH ONLY SUCH MINOR ADJUSTMENTS AS NECESSARY TO COORDINATE THE WORK WITH ALL OTHER TRADES TO AVOID INTERFERENCES.

NO.	DATE	DESCRIPTION	BY	CHKD.
2/19/19	ADDENDUM #2			
REVISIONS				

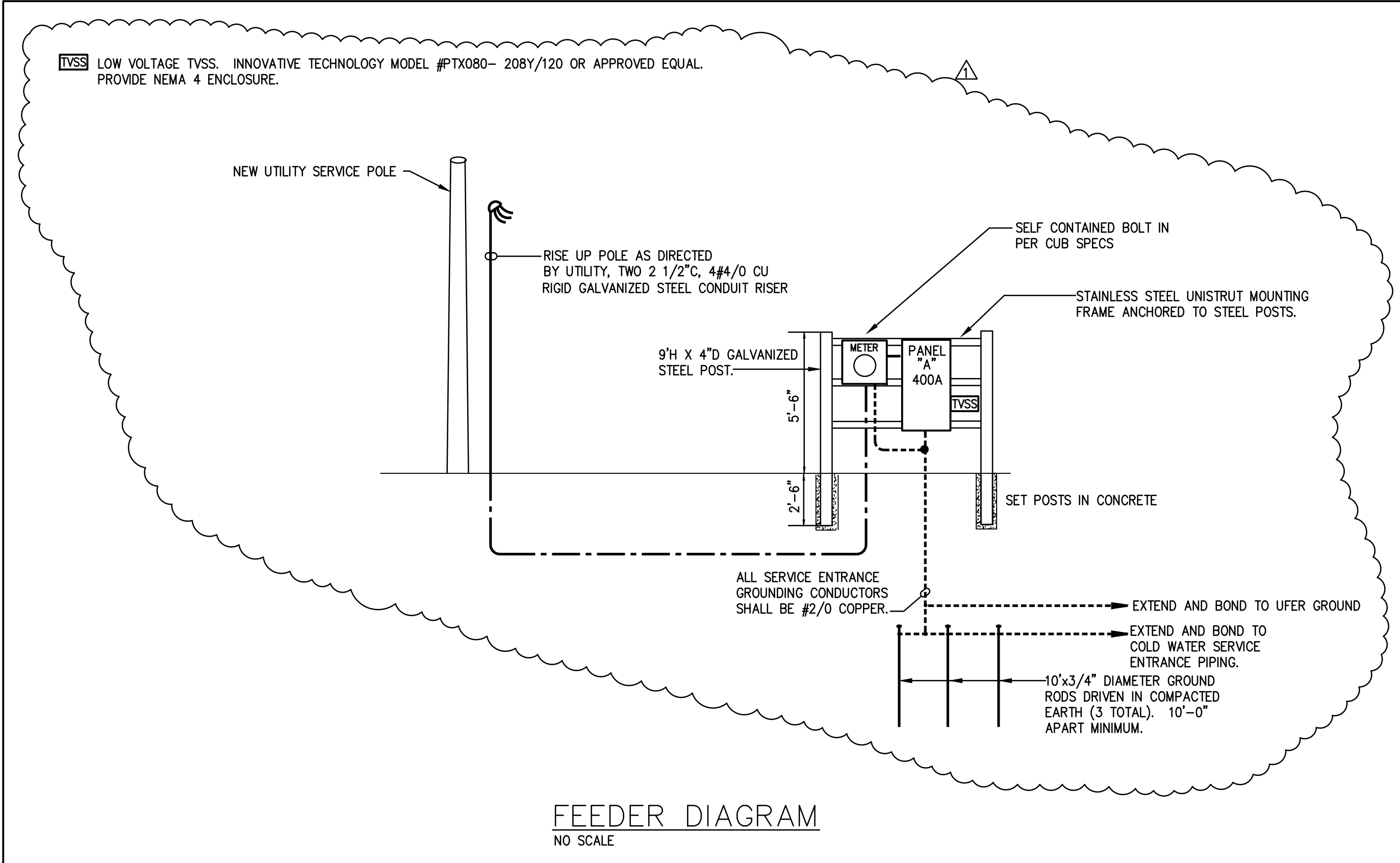


ROBERT G. CAMPBELL & ASSOC., L.P.
CONSULTING ENGINEERS
KNOXVILLE, TENNESSEE

NORRIS FREEWAY CONVENIENCE CENTER
PROPOSED SITE DEVELOPMENT PLAN
ANDERSON COUNTY, TN

SITE PLAN - ELECTRICAL

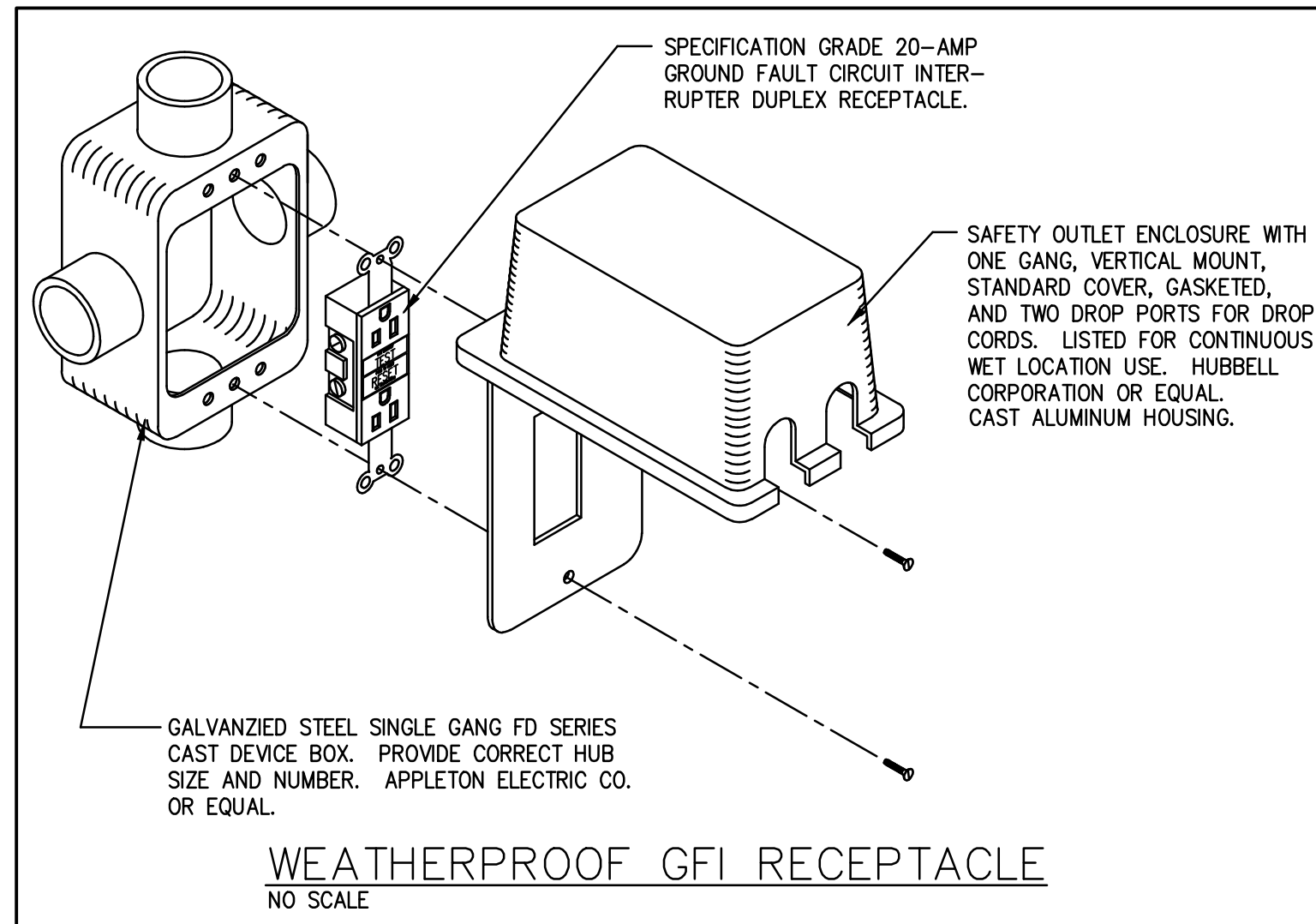
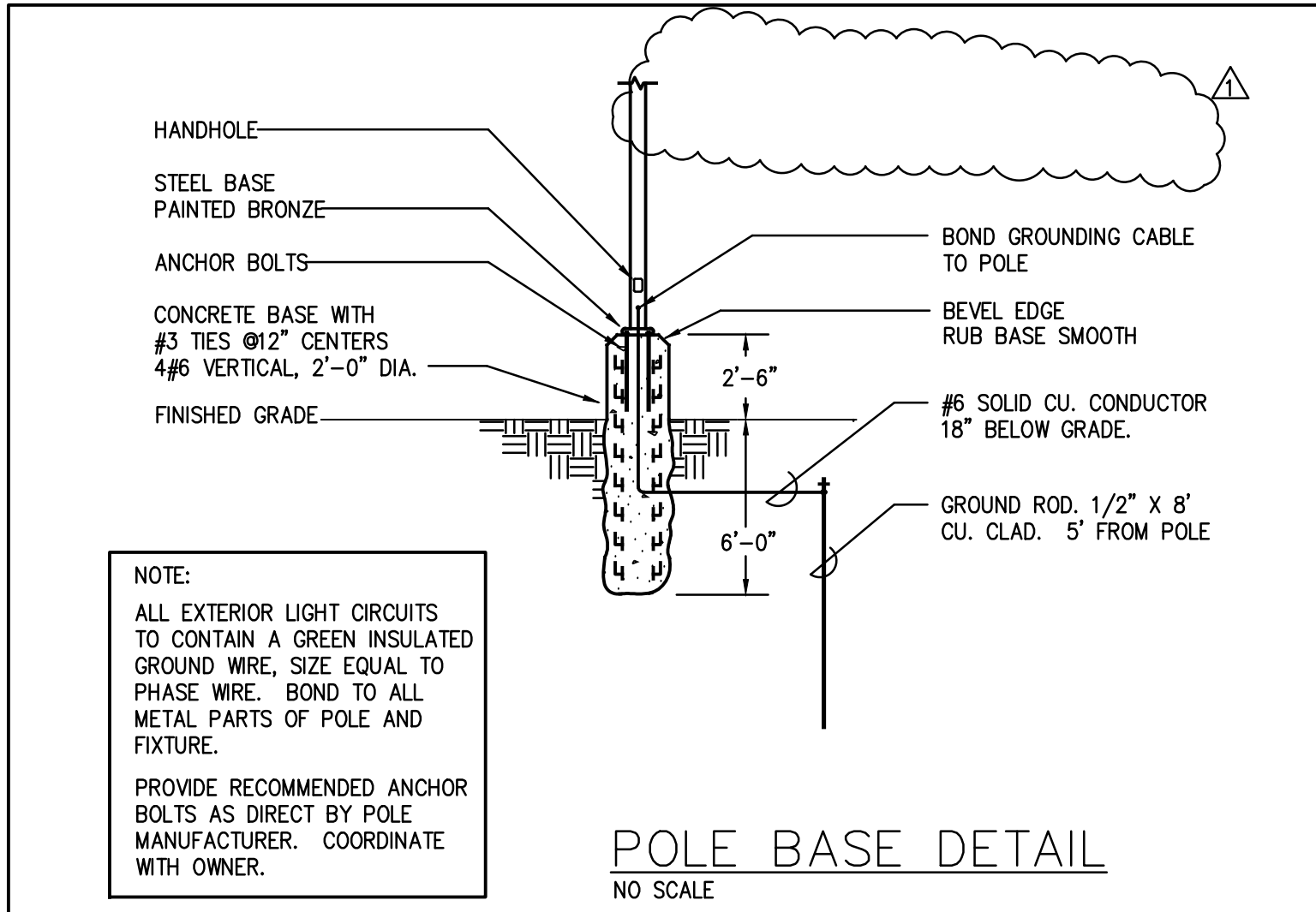
DESIGNED BY JCM	CHECKED BY RAC	SCALE 1" = 40'	SHEET 1
DRAWN BY JCM	DATE 01/28/2019	FILE NO. 15701	NO. E1 OF 2 SHEETS



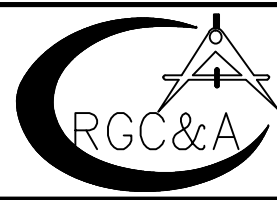
LIGHTING FIXTURE SCHEDULE												
DESIGNATION	LAMPS		MOUNTING				LAMP TYPES		GENERAL NOTES			
	LAMP TYPE	QUANTITY	CEILING		WALL		GROUND	FLR = FLUORESCENT INC = INCANDESCENT HPS = HIGH PRESSURE SODIUM MH = METAL HALIDE MV = MERCURY VAPOR				
			PENDANT	STEM LENGTH	SURFACE	RECESSED			HEIGHT ABOVE FLOOR OR GRADE	POLE HEIGHT		
											SURFACE	RECESSED
								GENERAL DESCRIPTION	MANUFACTURER			
									COMPANY	CATALOG NUMBER		
AA	LED	1	208						209WATT LED AREA LIGHT WITH ALUMINUM HOUSING 2" ARM MOUNT AND BRONZE FINISH.PROVIDE 25' ROUND TAPERED ALUMINUM POLE. BRONZE FINISH	LUMEC	FIXTURE: RVM 215W12BED4KR LE4 120V CLO POLE: RTA 745252	
									ULS			

<div><div><div>⚠</div><div>”A”</div></div></div>	RATING: 400 AMPS MAIN: BREAKER		VOLTAGE: 208Y/120 MOUNTING: SURFACE		LOAD SUMMARY		PROVIDE STAINLESS STEEL CAN AND WEATHERPROOF TRIM					
	PHASE: 3 WIRE: 4		ENCLOSURE: NEMA 4X/SS		⚡: 32.2 KW		SERVICE ENTRANCE RATED					
	SCCR: 30,000 AIC		SIZE (WxD): 20"x6"		⚡C: 31.2 KW		PANEL SHALL BE FULLY RATED					
PANEL DESIGNATION		FEEDER: SEE RISER DIAGRAM		TOTAL: 89.2 KW								
LOAD DESCRIPTION				BKR	KW	A	B	C	KW	BKR	LOAD DESCRIPTION	
SPARE				90	5.8	1	2	5.8	90	2	GARBAGE COMPACTOR	
					5.8					4	5.8	
					3	5.8	5	6	5.8	3		
CONTROL BUILDING				100	8.0	7	8	5.8	90	8	5.8	GARBAGE COMPACTOR
					2	8.0	9	10	5.8		10	5.8
EXTERIOR POLE LIGHTING				20/1	1.0	11	12	5.8	90	12	5.8	3
PHOTOCELL												
PROVISION				90	3	15	16	5.8	90	14	5.8	GARBAGE COMPACTOR
					3	17	18	5.8	90	16	5.8	3
SPARE				20/1	19	20	21	5.8	100	18	5.8	PROVISION
SPARE				20/1	21	22	23	5.8				
LIGHTING – TRASH AREA AND OPS BLDG				20/1	0.6	23	24	5.8	90	24	3	
OUTDOOR RECEPTACLES				20/1	1.0	25	26	5.8	100	26	100	PROVISION
SPARE				20/1	27	28	29	5.8				
OUTDOOR RECEPTACLES				20/1	1.0	29	30	5.8	90	30	3	
SPARE				20/1	31	32	33	5.8	100	32	100	PROVISION
SPARE				20/1	33	34	35	5.8				
SPARE				20/1	35	36	37	5.8	90	36	3	
SPARE				50	37	38	39	5.8	30	38	30	TVSS
					39	40	41	5.8				
					3	41	42	5.8				

ELECTRICAL LEGEND	
SYMBOL	DESCRIPTION
Ⓢ	JUNCTION BOX - SIZE AND USE AS REQUIRED. COVERPLATE SHALL OVERLAP THE BOX EDGE BY 1/2" WHERE RECESSED IN WALL WITH CONCEALED WIRING.
--- A-1,3 ---	HOMERUN - EXTEND CONDUIT TO PANELBOARD, IN THIS EXAMPLE PANEL "A", CIRCUIT 1 AND 3. NUMBER OF CROSSHATCHED LINES INDICATE THE NUMBER OF #12 AWG CURRENT CARRYING CONDUCTORS WHERE MORE THAN TWO (NOT INCLUDING GROUND). CIRCUITS SHARING A COMMON NEUTRAL SHALL BE CONNECTED TO DIFFERENT LINES OR PHASES WITHIN THE PANELBOARD REGARDLESS OF THE NUMBERING ON THE DRAWINGS. ALL CONDUIT RUNS SHALL HAVE A GREEN #12 AWG GROUND WIRE THAT TIES TO A GROUNDING BUS BAR IN THE PANELBOARD.
---	CONDUIT - IN THE FLOOR CONSTRUCTION OR UNDERGROUND.
---	CONDUIT - IN THE WALL OR CEILING CONSTRUCTION.
"A"	PANELBOARD - RECESSED OR SURFACE MOUNTED AS INDICATED. MOUNT TOP OF PANEL 6' ABOVE THE FINISHED GRADE. ALL PANELBOARDS SHALL HAVE A SEPARATE GROUND BUS BAR FOR CONNECTION OF GROUND CONDUCTORS. "A" INDICATES PANEL DESIGNATION.
3 AC	GROUND FAULT CIRCUIT INTERRUPTING DUPLEX RECEPTACLE - 120-VOLT, 20-AMP WITH GFCI PROTECTION IN THE RECEPTACLE. MOUNTING HEIGHT AND NOTATIONS SAME AS FOR DUPLEX RECEPTACLE.
3S	WALL SWITCH - RATED FOR 20-AMP OPERATION AT LINE VOLTAGE. SINGLE POLE UNLESS NOTED 3-WAY OR 4-WAY. MOUNT 48" ABOVE FINISHED FLOOR EXCEPT IN MASONRY WHERE THE HEIGHT SHALL BE ADJUSTED TO HAVE EDGE OCCUR AT NEAREST JOINT.



NO.	DATE	ADDENDUM #2	DESCRIPTION	BY	CKD.
			REVISIONS		



ROBERT G. CAMPBELL & ASSOC., L.P.
CONSULTING ENGINEERS
KNOXVILLE, TENNESSEE

NORRIS FREEWAY CONVENIENCE CENTER
PROPOSED SITE DEVELOPMENT PLAN
ANDERSON COUNTY, TN

LEGENDS, SCHEDULES, AND DETAILS

DESIGNED BY JCM	CHECKED BY RAC	SCALE 1/8" = 1'-0"	SHEET 2
DRAWN BY JCM	DATE 01/28/2019	FILE NO. 15701	NO. E2 OF 2 SHEETS



5417 Ball Camp Pike
Knoxville, TN 37921
Phone: (865) 588-2431
Fax: (865) 588-2434
West, Welch, Reed Engineers, Inc.
WWR PROJECT# 119003
THIS DRAWING IS GENERALLY DIAGRAMMATIC AND, EXCEPT WHERE SPECIFICALLY DIMENSIONED OR DETAILED, INDICATES THE GENERAL ARRANGEMENT OF THE WORK. THE CONTRACTOR SHALL INSTALL HIS WORK TO CONFORM AS NEARLY AS POSSIBLE TO THE LOCATIONS AND ARRANGEMENTS SHOWN, WITH ONLY SUCH MINOR ADJUSTMENTS AS NECESSARY TO COORDINATE THE WORK WITH ALL OTHER TRADES TO AVOID INTERFERENCES.