

ADDENDUM ONE
AVONDALE YOUTH AND FAMILY DEVELOPMENT CENTER
CONTRACT NO. Y-15-008-201
CITY OF CHATTANOOGA, TENNESSEE

The following changes shall be made to the Contract Documents, Specifications, and Drawings:

I. Notes:

- a. Questions: Please have all questions and bid phase RFIs submitted in writing by 10/31. This will allow sufficient time to formulate responses and distribute all Addenda prior to the bid date.
- b. The Contractor shall be responsible for all permit and permit review fees. Permit fees accrued to date amount to \$5,336.00, and not all permit reviews have been completed at this time. The cost of permit and permit review fees shall be included in the Base Bid. The amount of \$5,336.00 shall be reimbursed directly to the Architect.

II. Specifications:

- a. 00-01-10 Table of Contents. Updated to reflect the additional spec section. (8 pages)
- b. 00-03-01 Bid Schedule. Updated to provide space for the unit prices (2 pages)
- c. 01-22-00 Schedule of unit prices. Added to reflect the potential mural area on the front façade along Wilcox Blvd. (2 pages)
- d. 32 84 00 Planting Irrigation. Revise to specifically indicate 'backflow preventer'. (4 pages)

III. Drawings:

- a. M-100 Mechanical – Overall Floor Plan
- b. AR-200 - Elevations

October 16, 2017

/s/ Justin C. Holland, Administrator
City of Chattanooga
Department of Public Works

TABLE OF CONTENTS

Division	Section Title
----------	---------------

SPECIFICATIONS GROUP

Facility Construction Subgroup

DIVISION 00 – PROCUREMENT AND CONTRACTING REQUIREMENTS

00 00 08	TABLE OF CONTENTS
00 00 09	REQUEST FOR BIDDER INFORMATION
00 01 00	ADVERTISEMENT FOR BIDS NEED
00 01 01	PROJECT TITLE PAGE
00 01 07	SEALS PAGE
00-01-08	COVER FOR BID PACKAGE
00 02 00	INSTRUCTION TO BIDDERS
00 20 01	CONTRACTOR IDENTIFICATION
00 03 00	BID PROPOSAL
00 03 01	BID SCHEDULE
00 03 02	BID BOND
00 03 03	CERTIFICATION OF BIDDER – EQUAL EMPLOYMENT OPPORTUNIT
00 03 04	AFFIRMATIVE ACTION PLAN
00 04 00	STATEMENT OF BIDDERS QUALIFICATIONS
00-04-00.2	STATEMENT OF BIDDERS REFERENCES
00 04 01	STATEMENT OF EQUIPMENT
00 04 10	PARTNERSHIP CERTIFICATE
00 04 11	CORPORATE CERTIFICATE
00 04 17	IRAN DIVESTMENT ACT
00 04 30	STATEMENT OF LICENSE CERTIFICATE
00 04 35	JOINT VENTURE QUESTIONNAIRE
00 04 40	AFFIDAVIT OF NO COLLUSION BY PRIME BIDDER
00 04 41	AFFIDAVIT OF NO COLLUSION BY SUBCONTRACTOR
00 04 86	DRUG FREE WORK PLACE
00 05 00	CONTRACT
00 06 00	PERFORMANCE BOND
00 06 01	PAYMENT BOND
00 06 02	CHANGE ORDER
00 06 03	CHANGE REQUEST FORM (CRF)
00 07 01	CERTIFICATE OF PROPERTY RESTORATION
00 07 06	CERTIFICATE OF SUBSTANTIAL COMPLETION
00 72 13	GENERAL CONDITIONS
00 08 30	GENERAL PROVISIONS

00 08 31	EQUAL EMPLOYMENT OPPORTUNITIES SPECIFICATIONS
00 08 32	EQUAL EMPLOYMENT OPPORTUNITIES CLAUSE
00 08 35	PROJECT SIGN
00 08 36	PROGRESS PAYMENT REQUEST FORM
00 08 37	NEW RETAINAGE ESCROW ACCOUNT SET-UP FOR SUNTRUST
00 08 38	FINANCE-POWER OF ATTORNEY
00 08 39	CORPORATE RESOLUTION
00 08 40	CITY OF CHATTANOOGA RETAINAGE
00 10 10	SUMMARY OF WORK AND SCHEDULE
00 10 25	UNIT PRICES
00 10 35	WEATHER DELAYS
00 10 80	APPLICABLE CODES AND STANDARDS
00 10 90	ABBREVIATIONS
00 11 50	MEASUREMENT AND PAYMENT
00 12 00	PROJECT MEETINGS
00 12 20	PROGRESS MEETINGS
00 13 00	SUBMITTALS
00 13 80	CONSTRUCTION PHOTOGRAPHS
00 16 20	TRANSPORTATION AND HANDLING
00 16 30	STORAGE AND PROTECTION
00 17 00	CLEANING
00 17 17	MOBILIZATION
00 17 20	PROJECT RECORD DOCUMENTS
	SANITARY SEWER ELECTRONIC DATA SUBMITTALS
	STORMWATER ELECTRONIC DATA SUBMITTALS
00 17 30	GUARANTEES AND WARRANTIES

DIVISION 01 – GENERAL REQUIREMENTS

01 11 00	SUMMARY
01 21 00	ALLOWANCES
01 22 00	<u>SCHEDULE OF UNIT PRICES (added by addendum)</u>
01 23 00	ALTERNATES
01 25 00	SUBSTITUTION PROCEDURES
01 26 00	CONTRACT MODIFICATION PROCEDURES
01 31 00	PROJECT MANAGEMENT AND COORDINATION
01 33 00	SUBMITTAL PROCEDURES
01 40 00	QUALITY REQUIREMENTS
01 50 00	TEMPORARY FACILITIES AND CONTROLS
01 60 00	PRODUCT REQUIREMENTS
01 77 00	CLOSEOUT PROCEDURES
01 78 39	PROJECT RECORD DOCUMENTS
01 79 00	DEMONSTRATION AND TRAINING

DIVISION 02 - EXISTING CONDITIONS

02 41 19	SELECTIVE DEMOLITION
----------	----------------------

DIVISION 03 – CONCRETE

03 30 00	CAST-IN-PLACE CONCRETE
03 30 51	CONCRETE CURING AND FINISHING
03 35 43	POLISHED CONCRETE FINISHING
03 36 00	INTEGRALLY COLORED CONCRETE
03 41 08	PRECAST CONCRETE BLEACHERS

DIVISION 04 – MASONRY

04 20 00	UNIT MASONRY
04 72 00	CAST STONE MASONRY

DIVISION 05 – METALS

05 12 00	STRUCTURAL STEEL FRAMING
05 21 00	STEEL JOIST FRAMING
05 31 00	STEEL DECKING
05 40 00	COLD FORMED METAL FRAMING
05 50 00	METAL FABRICATIONS
05 52 13	PIPE AND TUBE RAILINGS

DIVISION 06 - WOOD, PLASTICS, AND COMPOSITES

- 06 10 53 MISCELLANEOUS ROUGH CARPENTRY
- 06 10 23 HEAVY TIMBER CONSTRUCTION
- 06 15 16 WOOD ROOF DECKING
- 06 41 16 PLASTIC-LAMINATE-FACED ARCHITECTURAL CABINETS

DIVISION 07 - THERMAL AND MOISTURE PROTECTION

- 07 11 13 BITUMINOUS DAMPPROOFING
- 07 21 00 THERMAL INSULATION
- 07 21 19 FOAMED-IN-PLACE INSULATION
- 07 25 00 WEATHER BARRIERS
- 07 26 00 VAPOR RETARDERS
- 07 31 26 SLATE SHINGLE SIDING
- 07 41 13.16 STANDING-SEAM METAL PANELS
- 07 54 19 POLYVINYL-CHLORIDE (PVC) ROOFING
- 07 62 00 SHEET METAL FLASHING AND TRIM
- 07 72 00 ROOF ACCESSORIES
- 07 84 13 PENETRATION FIRESTOPPING
- 07 92 00 JOINT SEALANTS

DIVISION 08 – OPENINGS

- 08 12 13 HOLLOW METAL FRAMES
- 08 14 16 FLUSH WOOD DOORS
- 08 33 13 COILING COUNTER DOORS
- 08 36 13 SECTIONAL DOORS
- 08 41 13 ALUMINUM FRAMED ENTRANCES AND STOREFRONTS
- 08 45 19 POLYCARBONATE WALL SYSTEM
- 08 71 00 DOOR HARDWARE
- 08 80 00 GLAZING
- 08 83 00 MIRRORS

DIVISION 09 – FINISHES

- 09 22 16 NON-STRUCTURAL METAL FRAMING
- 09 29 00 GYPSUM BOARD
- 09 64 10 WOOD ATHLETIC FLOORING – GYM
- 09 64 11 WOOD ATHLETIC FLOORING – DANCE
- 09 84 36 SOUND ABSORBING SUSPENDED RIGID BAFFLES
- 09 84 37 SOUND ABSORBING WAVE BAFFLES
- 09 91 13 EXTERIOR PAINTING
- 09 91 23 INTERIOR PAINTING
- 09-93-00 STAINING AND TRANSPARENT FINISHING

DIVISION 10 – SPECIALTIES

- 10 14 23.13 ROOM-IDENTIFICATION SIGNAGE
- 10 21 13.19 PLASTIC TOILET COMPARTMENTS
- 10 21 16.19 PLASTIC SHOWER AND DRESSING COMPARTMENTS
- 10 22 39 FOLDING PANEL PARTITIONS
- 10 28 00 TOILET, BATH, AND LAUNDRY ACCESSORIES
- 10 40 00 KEY CONTROL CABINETS
- 10 44 16 FIRE EXTINGUISHERS
- 10 51 00 PLASTIC LOCKERS

DIVISION 11 – EQUIPMENT

- 11 31 00 CLEANING APPLIANCES
- 11 40 00 FOOD SERVICE EQUIPMENT
- 11 66 23 GYMNASIUM EQUIPMENT
- 11 66 53 GYMNASIUM DIVIDERS

DIVISION 12 – FURNISHINGS

- 12 36 13 CONCRETE COUNTERTOPS
- 12 36 61.16 SOLID SURFACING COUNTERTOPS
- 12 36 61.19 QUARTZ AGGLOMERATE COUNTERTOPS

DIVISION 14 - CONVEYING EQUIPMENT

N/A N/A

DIVISION 21 – FIRE SUPPRESSION

21 05 13 COMMON MOTOR REQUIREMENTS FOR FIRE SUPPRESSION EQUIPMENT
21 05 17 SLEEVES AND SLEEVE SEALS FOR FIRE-SUPPRESSION PIPING
21 05 18 ESCUTCHEONS FOR FIRE-SUPPRESSION PIPING
21 05 23 GENERAL DUTY VALVES FOR FIRE PROTECTION PIPING
21 05 53 IDENTIFICATION FOR FIRE SUPPRESSION PIPE AND EQUIPMENT
21 11 19 FIRE DEPARTMENT CONNECTIONS
21 13 13 WET-PIPE SPRINKLER SYSTEM

DIVISION 22 – PLUMBING

22 05 13 COMMON MOTOR REQUIREMENTS FOR PLUMBING EQUIPMENT
22 05 17 SLEEVES AND SLEEVE SEALS FOR PLUMBING PIPING
22 05 18 ESCUTCHEONS FOR PLUMBING PIPING
22 05 23 GENERAL-DUTY VALVES FOR PLUMBING PIPING
22 05 29 HANGERS AND SUPPORTS FOR PLUMBING PIPING AND EQUIPMENT
22 05 53 IDENTIFICATION FOR PLUMBING PIPING AND EQUIPMENT
22 07 19 PLUMBING PIPING INSULATION
22 11 16 DOMESTIC WATER PIPING
22 11 19 DOMESTIC WATER PIPING SPECIALTIES
22 13 16 SANITARY WASTE AND VENT PIPING
22 13 19 SANITARY WASTE PIPING SPECIALTIES
22 14 23 STORM DRAINAGE PIPING SPECIALTIES
22 34 00 FUEL-FIRED, DOMESTIC-WATER HEATERS
22 42 13.13 COMMERCIAL WATER CLOSETS
22 42 13.16 COMMERCIAL URINALS
22 42 16.13 COMMERCIAL LAVATORIES
22 42 16.16 COMMERCIAL SINKS
22 42 23 COMMERCIAL SHOWERS
22 47 13 DRINKING FOUNTAINS

DIVISION 23 – HEATING, VENTILATING, AND AIR CONDITIONING (HVAC)

23 05 13 COMMON MOTOR REQUIREMENTS FOR HVAC EQUIPMENT
23 05 53 IDENTIFICATION FOR HVAC PIPING AND EQUIPMENT
23 05 93 TESTING, ADJUSTING AND BALANCING
23 07 13 DUCT INSULATION

- 23 08 00 COMMISSIONING OF HVAC
- 23 09 93 SEQUENCE OF OPERATIONS FOR HVAC CONTROLS
- 23 09 93.11 SEQUENCING OF OPERATIONS FOR HVAC DDC
- 23 11 23 FACILITY NATURAL-GAS PIPING
- 23 31 13 METAL DUCTS
- 23 33 00 AIR DUCT ACCESSORIES
- 23 34 16 CENTRIFUGAL HVAC FANS
- 23 37 13 DIFFUSERS, REGISTERS, AND GRILLES
- 23 81 19 SELF-CONTAINED AIR CONDITIONERS
- 23 81 26 SPLIT-SYSTEM AIR-CONDITIONERS
- 23 82 39.19 WALL AND CEILING UNIT HEATERS

DIVISION 26 – ELECTRICAL

- 26 04 99 BASIC ELECTRICAL REQUIREMENTS
- 26 05 19 LOW VOLTAGE ELECTRICAL POWER CONDUCTORS AND CABLES
- 26 05 26 GROUNDING AND BONDING FOR ELECTRICAL SYSTEMS
- 26 05 29 HANGERS AND SUPPORTS FOR ELECTRICAL SYSTEMS
- 26 05 33 RACEWAY AND BOXES FOR ELECTRICAL SYSTEMS
- 26 05 43 UNDERGROUND DUCTS AND RACEWAYS FOR ELECTRICAL SYSTEMS
- 26 05 44 SLEEVES AND SLEEVE SEALS FOR ELECTRICAL RACEWAYS AND CABLING
- 26 05 53 IDENTIFICATION FOR ELECTRICAL SYSTEMS
- 26 09 23 LIGHTING CONTROL DEVICES
- 26 09 43.23 RELAY-BASED LIGHTING CONTROLS
- 26 22 00 LOW-VOLTAGE TRANSFORMERS
- 26 24 16 PANELBOARDS
- 26 27 13 ELECTRICITY METERING
- 26 27 26 WIRING DEVICES
- 26 28 16 ENCLOSED SWITCHES AND CIRCUIT BREAKERS
- 26 33 23 SINGLE CIRCUIT BATTERY EQUIPMENT FOR EMERGENCY LIGHTING
- 26 43 13 SURGE PROTECTION FOR LOW-VOLTAGE ELECTRICAL POWER CIRCUITS
- 26 51 19 LED INTERIOR LIGHTING

DIVISION 27 – COMMUNICATIONS

- 27 05 36 CABLE TRAYS FOR COMMUNICATION SYSTEMS

DIVISION 28 – ELECTRONIC SAFETY AND SECURITY

- 28 15 00 ACCESS CONTROL, INTRUCTION DETECTION, COMMUNICATION SYSTEMS
- 28 46 21.11 ADDRESSABLE FIRE-ALARM SYSTEMS

DIVISION 31 – EARTHWORK

- 31 10 00 SITE CLEARING
- 31 20 00 EARTHWORK
- 31 31 16 TERMITE CONTROL
- 31 50 00 EXCAVATION SUPPORT AND PROTECTION

DIVISION 32 – EXTERIOR IMPROVEMENTS

- 32 11 00 SUBGRADE & BASE PREPERATION
- 32 13 13 PORTLAND CEMENT CONCRETE PAVING
- 32 13 73 PAVEMENT JOINT SEALANTS
- 32 84 50 PLANTING IRRIGATION
- 32 91 00 SOILS
- 32 93 00 PLANTS

DIVISION 33 – UTILITIES

- 33 05 00 UTILITY MATERIALS
- 33 10 00 WATER DISTRIBUTION
- 33 33 00 SANITARY SEWERAGE
- 33 50 00 STORM DRAINAGE
- 33 46 13 FOUNDATION DRAINAGE
- 33 51 00 NATURAL GAS DISTRIBUTION

END OF TABLE OF CONTENTS

BID SCHEDULE

The Avondale Youth and Family Development Center

CONTRACT NUMBER Y-15-008-201

CHATTANOOGA, TENNESSEE

DESCRIPTION

The project consists of the following major elements of construction including but not limited to:

Partial demolition of baseball field, partial demolition and removal of various site elements to permit construction of new facility. New facility includes a new, ground-up 23,000 SF youth and family development center, retaining walls concrete sidewalks and ramps, storm drainage, site and building utilities, and other site amenities to provide a complete and in-place facility.

The Avondale Youth and Family Development Center

CONTRACT NUMBER Y-15-008-201

CHATTANOOGA, TENNESSEE

TOTAL BASE BID

Total Base \$ _____ *numbers*

written

Note: Dollar amounts are to be shown in both words and figures. In case of discrepancy, dollar amounts shown in words will govern.

Deduct Alt #1. BBQ pavilion: \$ _____ *numbers*

written

Base bid - deduct alt 1 \$ _____ *numbers*

Base bid - deduct alt 1 _____ *written*

Deduct Alt #2 Entry canopy: \$ _____ *numbers*

written

Base bid -(deduct alts 1&2) \$ _____ *numbers*

Base bid - (deduct alts 1&2) _____ *written*

Deduct Alt #3 Four basketball hoops: \$ _____ *numbers*

written

Base bid -(deduct alts 1,2&3) _____ *numbers*

Base bid -(deduct alts 1,2&3) \$ _____ *written*

Unit Price No 01. Slate shingles \$ _____ Sq ft

Unit Price No 02. Metal edging \$ _____ Lin ft

Unit Price No 03. Exterior furring \$ _____ Sq ft

Contractor certifies that he has reviewed the plans and specifications, and that all items of work not specifically listed in the Bid Schedule are included in the prices for the various items listed on the Bid Schedule.

BIDDER:

DATE:

BY (Signature):

TITLE:

ADDRESS:

CITY:

STATE:

ZIP CODE:

TELEPHONE NUMBER:

SECTION 012200 – SCHEDULE OF UNIT PRICES

PART 1 - GENERAL

1.1 SUMMARY

- A. Section includes administrative and procedural requirements for unit prices.
- B. Related Requirements:
 - 1. Section 012100 "Allowances" for procedures for using unit prices to adjust quantity allowances.

1.2 DEFINITIONS

- A. Unit price is [**an amount incorporated into the Agreement, applicable during the duration of the Work as**] a price per unit of measurement for materials, equipment, or services, or a portion of the Work, added to or deducted from the Contract Sum by appropriate modification, if the scope of Work or estimated quantities of Work required by the Contract Documents are increased or decreased.

1.3 PROCEDURES

- A. Unit prices include all necessary material, plus cost for delivery, installation, insurance, [**applicable taxes,**] overhead, and profit.
- B. Measurement and Payment: See individual Specification Sections for work that requires establishment of unit prices. Methods of measurement and payment for unit prices are specified in those Sections.
- C. Owner reserves the right to reject Contractor's measurement of work-in-place that involves use of established unit prices and to have this work measured, at Owner's expense, by an independent surveyor acceptable to Contractor.
- D. List of Unit Prices: A schedule of unit prices is included in Part 3. Specification Sections referenced in the schedule contain requirements for materials described under each unit price.

PART 2 - PRODUCTS (Not Used)

PART 3 - EXECUTION

3.1 SCHEDULE OF UNIT PRICES

A. Unit Price No. 01 – Slate shingle siding

1. Description: Installed slate shingle siding as shown on the Drawings and according to Section 07-31-26 Slate shingle siding
2. This includes any channels or furring
3. Unit of Measurement: square foot
4. This unit price pertains largely to the potential mural area on the front façade of the building along Wilcox Blvd

B. Unit Price No. 02 – Metal Edging

1. Description: Provide metal edging as shown on the Drawings and according to Section 05-50-00 Metal fabrications. This is to provide a metal edge or frame, similar to that detailed around window and door openings.
2. Unit of Measurement: linear foot
3. This unit price pertains largely to the potential mural area on the front façade of the building along Wilcox Blvd

C. Unit Price No. 03 – Exterior Furring

1. Description: Provide exterior furring according to Section 05-40-00 cold form metal framing.
2. Unit of Measurement: square foot
3. Provide both vertical channels and horizontal wood furring similar to the support for slate shingles, but at spacing and depth as required to install the tile mosaic boards. Accounting for both the required spacing and the weight of the panels.
4. This unit price pertains largely to the potential mural area on the front façade of the building along Wilcox Blvd

END OF SECTION 012200

SECTION 328400 - PLANTING IRRIGATION

PART 1 - GENERAL

1.1 SUMMARY

- A. Section Includes:
 - 1. Delegated Design

1.2 PERFORMANCE REQUIREMENTS

- A. Irrigation zone control shall be [**automatic operation with controller and automatic control**] valves.
- B. Delegated Design: Design 100 percent coverage irrigation system, including comprehensive engineering analysis by a qualified professional engineer

1.3 Refer to:

- A. Landscape design drawings and specifications
- B. Site design as provided by the City for the remainder of the site

1.4 ACTION SUBMITTALS

- A. Provide all submittals to Owner for review. Copy the Architect on all submittals. Irrigation submittals to be reviewed by the Owner.
- B. Product Data: For each type of product indicated. Include rated capacities, operating characteristics, [**electrical characteristics,**] and furnished specialties and accessories.
- C. Wiring Diagrams: For power, signal, and control wiring.
- D. Shop Drawings: For full system design. Including all piping and connection points. Include layout of all sprinklers and coverage.
- E. Sample warranties
- F. Delegated-Design Submittal: For irrigation systems indicated to comply with performance requirements and design criteria, including analysis data signed and sealed by the qualified professional engineer responsible for their preparation.
 - 1. The full system design and all required necessary components are the contractor's responsibility. This includes all components and connections inside the building as well as the exterior portion of the sprinkler system.

2. Ensure the system design is completed in a timely manner so that all system components can be properly integrated with the building.

1.5 INFORMATIONAL SUBMITTALS

- A. Zoning Chart: Show each irrigation zone and its control valve.
- B. Controller Timing Schedule: Indicate timing settings for each automatic controller zone.
- C. Field quality-control reports.

1.6 CLOSEOUT SUBMITTALS

- A. Operation and maintenance data.
- B. System training documentation

1.7 QUALITY ASSURANCE

- A. Electrical Components, Devices, and Accessories: Listed and labeled as defined in NFPA 70, by a qualified testing agency, and marked for intended location and application.
- B. Installer
 1. Shall be a CIC, certified irrigation contractor
 2. Shall have a minimum of 3 years' experience and shall be able to demonstrate successful completion of at least 3 systems of similar size and complexity. Successful completion shall include all landscaping grasses, plants and trees having been successfully established after planting and have thrived for a minimum of one year after substantial completion.

PART 2 - PRODUCTS

- 2.1 Include an allowance of \$30,000 in the base bid to provide a sprinkler system
 - A. Sprinkler system to provide sufficient zones and 100% coverage regardless if cost exceeds the allowance.
- 2.2 Provide all parts, labor and materials to furnish and install a complete, code compliant, and fully functional automatic sprinkler system.
 - A. Refer to landscape drawings for graphic scope area definition.
 1. Landscaped and grass areas adjacent to and in the general building area.
 - B. Provide all components including but not limited to:

1. Connections, meters, panel boards, sleeving, back flow preventer (Added by addendum), and controls
 2. Connection points for system expansion
 3. All main and branch piping systems as required for proper water distribution
 4. Accessories
 5. Any and all other required components necessary for a complete and fully functional system.
- C. System shall have:
1. A water meter separate from the main facility meter
 2. Have a control panel so the system can function automatically. Provide time clock which can be set for multiple start times of varying durations throughout the day
 - a. Control panel shall have an overriding on / off switch so the system can be easily turned off if there are seasons when it is not needed.
 - b. Control panel to be able to address different zones independently
 3. Sprinkler heads or water dispersal system as approximate for each type of landscape space being irrigated
 4. Multiple zones. For each type of landscape area
- D. System shall be able to be connected to the larger system on site. Additional site work design is being prepared by the city. There will be additional irrigation system coverage on site.
1. All components to be of similar quality and design as the irrigation system as designed by the city for the remainder of the site.
 2. Basis of Design: the same components as specified by the city at the remainder of the site.
- E. Coordinate with Ownership for required
1. Irrigation zones
 2. Specific irrigation system requirements
 3. Types of sprinkler heads
 4. Integration with the additional system or future expansion of this system
 5. Irrigation requirements at playground area. Playground design TBD by owner. Extent or scope of irrigation at the playground TBD based on final design selection. Provide irrigation where required.
- F. Cleanly label each panel or switch which is part of the irrigation system. Provide permanent adhesive vinyl stickers or signage.
1. Paper stickers are not acceptable. Handwritten labels are not acceptable.
- G. System shall be fully warrantied for two years after the date of substantial completion.

PART 3 - EXECUTION

3.1 FIELD QUALITY CONTROL

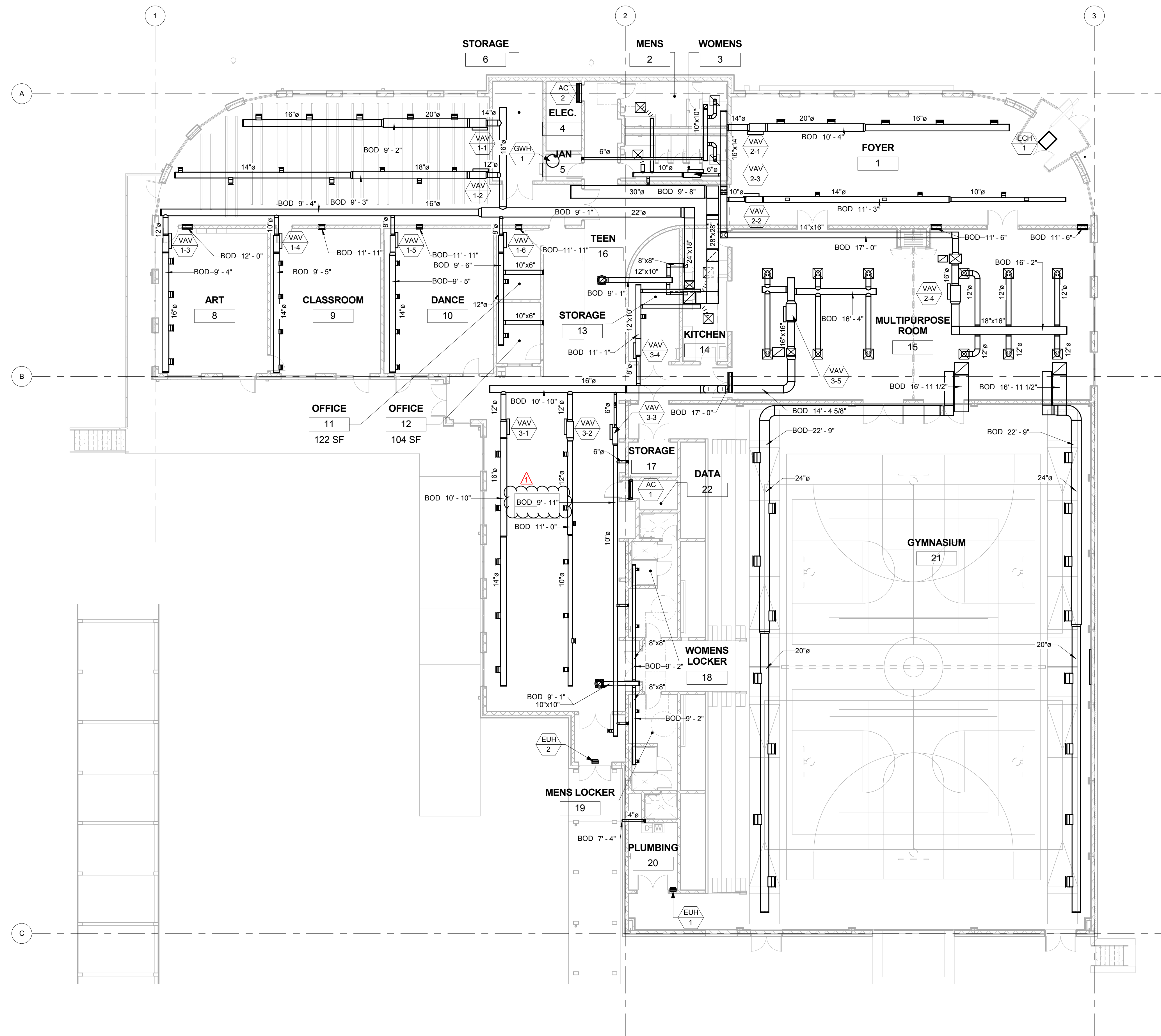
- A. Perform all required tests and inspections.
- B. Tests and Inspections:

1. Leak Test: After installation, charge system and test for leaks. Repair leaks and retest until no leaks exist.
 2. Operational Test: After electrical circuitry has been energized, operate controllers and automatic control valves to confirm proper system operation.
 3. Test and adjust controls and safeties. Replace damaged and malfunctioning controls and equipment.
- C. Any irrigation product will be considered defective if it does not pass tests and inspections.
- D. Prepare test and inspection reports.

3.2 ADJUSTING

- A. Adjust settings of controllers.
- B. Adjust automatic control valves to provide flow rate at rated operating pressure required for each sprinkler circuit.
- C. Adjust sprinkler coverage area.
1. Sprinklers shall provide full coverage. Sprinklers shall not impede on the public way or over spray the building, driveways, walkways or other areas.
- D. Adjust sprinklers and devices, except those intended to be mounted aboveground, so they will be flush with, finish grade.

END OF SECTION 328400



MECHANICAL - OVERALL FLOOR PLAN
1
M-100
3/32" = 1'-0"

1305 DODSON AVE, CHATTANOOGA TN 37401

MARK	COMMENT
------	---------

E-1	VERMONT SLATE SIDING
E-2	METAL PANEL
E-3	POLYCARBONATE PANEL
E-4	STOREFRONT
E-5	TAPERED STEEL BEAM
E-6	T&G WOOD DECKING
E-7	FASCIA EDGE METAL
E-8	PREFINISHED METAL COPING
E-9	STEEL FRAME
E-10	CHAMFERED CAST STONE
E-11	STEEL GUARDRAILS
E-12	CAST STONE
E-13	DOWNSPOUT



④ MOSAIC EDGE DETAIL (POTENTIAL ARTWORK LOCATION)
1 1/2" = 1'-0"

① South
 $\frac{1}{8}" = 1'-0"$

② North
 $\frac{1}{8}'' = 1'-0''$

No.	Desc.	Date
1	Revision 1	10.10.201

CONSTRUCTION
DOCUMENTS



ALL DRAWINGS AND WRITTEN MATERIAL CONSTITUTE ORIGINAL WORK OF THE ARCHITECT AND MAY NOT BE DUPLICATED, USED, OR DISCLOSED WITHOUT CONSENT OF THE ARCHITECT.

© HEFFERLIN + KRONENBERG ARCHITECTS
ALL RIGHTS RESERVED.

DATE: 9/6/17
JOB#: 16-057
SCALE: AS INDICATED
DRAWN: AREY

ELEVATIONS

AR-200