

Addendum 1

City of Canton, Ohio
Purchasing Department
218 Cleveland Ave. SW, 4th floor
Canton, Ohio 44702

Fairmount Area Watermain Replacement – Phase 1

Item/Project

Water Department

Responsible Department

Wednesday, July 31st, 2019 at 2:00 PM local time

Bids Due On or Before

Bid Proposal Submitted By:

Company Name

Street Address

City

State

Zip

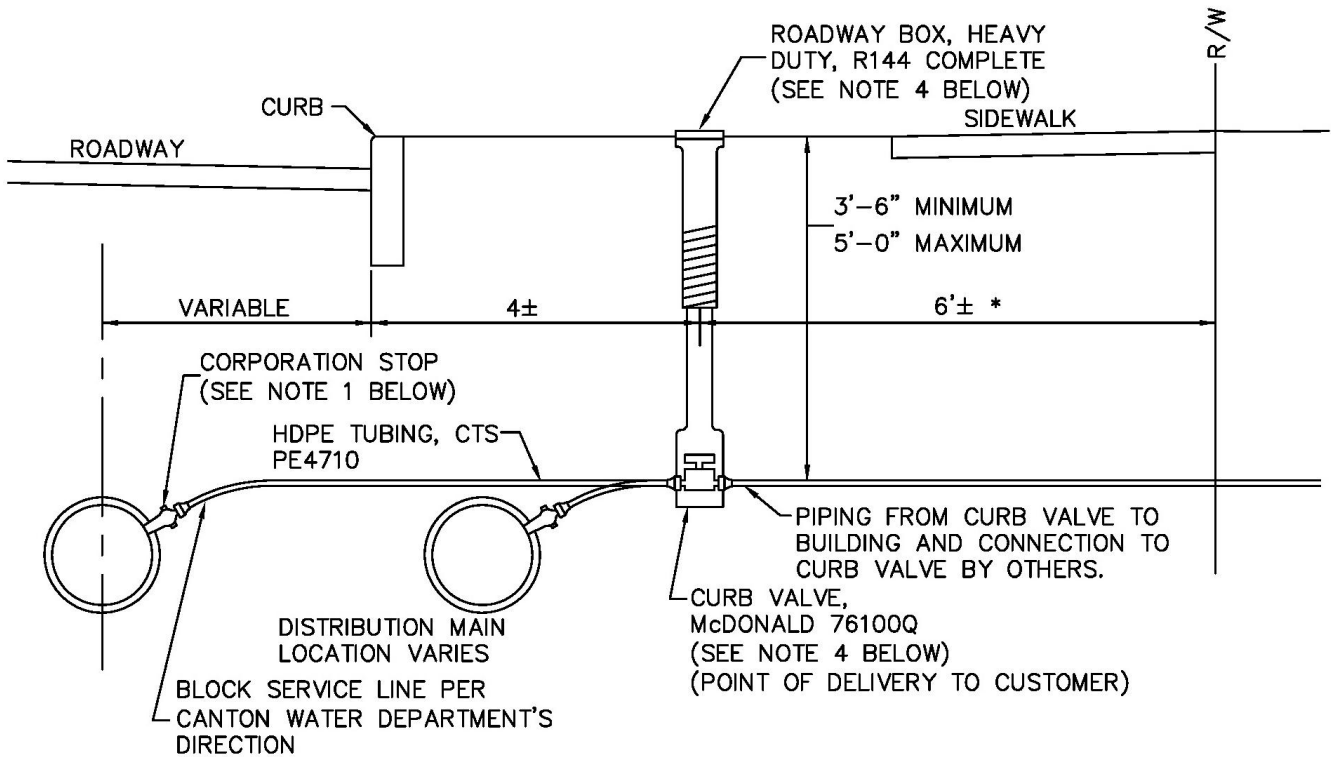
Contact Person

Phone No.

Email Address

Invitation to Bid Change 1:

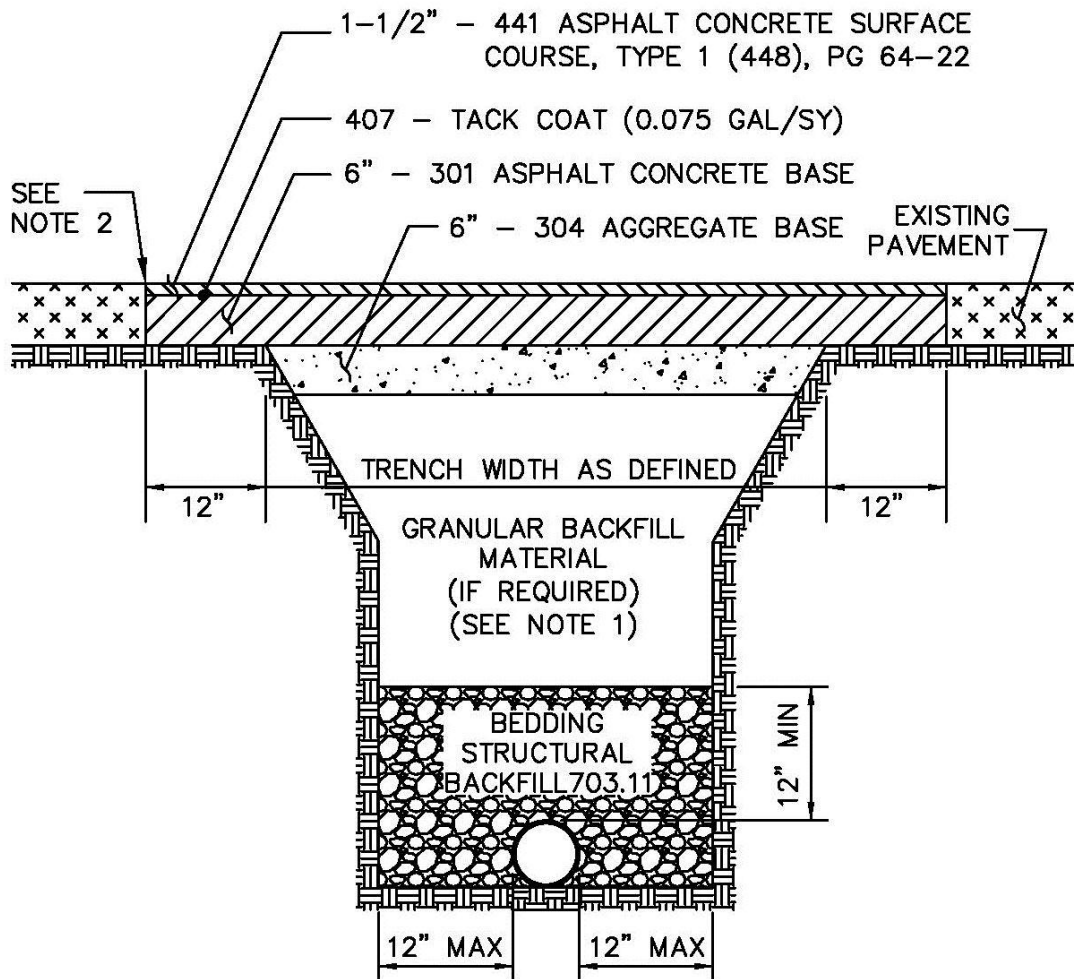
- A. In Appendix C: Specifications and Drawings, Plan sheet 4:
- Regarding note I.G “Utility Notification”, there are updated utility contacts available through the City of Canton’s engineering department upon request. An updated list will also be available at the pre-construction meeting.
- B. In Appendix C: Specifications and Drawings, Plan sheet 5:
- Note IV.B “Restricted Work Schedule” currently reads:
“No concrete finish work or permanent asphalt shall be placed from November 15th to April 15th unless written approval is granted by the City Engineer.”
- This note shall be revised to read as follows:
“The installation of any permanent asphalt shall be in accordance with City Ordinance 270/2014. Permanent asphalt paving shall be placed from May 1st to October 1st; and/or during optimal climatic conditions that are conducive to the best mix compacting and long term durability of the pavement, according to the highest and best practices of the asphalt pavement industry.”
- C. In Appendix C: Specifications and Drawings, Plan sheet 5:
- Note V.A “Sewer Standards”, any reference to Stark County and/or Stark County Metropolitan Sewer District shall be replaced with Canton Collections Department.
- D. In Appendix C: Specifications and Drawings, Plan sheet 5:
- Note VII.E “Existing Traffic Signals”, any reference to the County shall be replaced with Canton Traffic Engineer.
- E. In Appendix C: Specifications and Drawings, plan sheet 35:
- The “Typical Water Service” detail shall be replaced with the attached detail.
- F. In Appendix C: Specifications and Drawings, plan sheet 36:
- The “Pay Limits – Trench & Roadway Detail for D.I.P.” shall be replaced with the attached detail.



NOTES:

- 1.) CORPORATION STOP AND ASSEMBLY SHALL BE AS FOLLOWS:
 1" CORP. STOP ON DIP: INSTALL AT THE 2:00 POSITION, A MUELLER H-15008 CORPORATION STOP WITH A COMPRESSION CONNECTION.
 1" CORP. STOP ON PVC C909: INSTALL AT THE 2:00 POSITION, A MUELLER H-15008 CORPORATION WITH A COMPRESSION CONNECTION AND A FORD, STAINLESS STEEL, EPOXY COATED TAPPING SADDLE (FC202 STYLE).
 1 1/2" CORP. STOP: INSTALL AT THE 2:00 POSITION, A MUELLER H-15008 CORPORATION STOP WITH A COMPRESSION CONNECTION AND A FORD, STAINLESS STEEL, EPOXY COATED TAPPING SADDLE (FC202 STYLE).
 2" CORP. STOP: INSTALL AT A 45° ANGLE, A MUELLER H-10003 CORPORATION STOP WITH 2" IRON TOP, A STANDARD NO LEAD BRASS 45° ELBOW AND A MUELLER H-15428 COMPRESSION MALE WITH INSERT COUPLING. ASSEMBLY SHALL ALSO CONSIST OF A FORD, STAINLESS STEEL, EPOXY COATED TAPPING SADDLE (FC202 STYLE).
- 2.) A SERVICE CLAMP MUST BE USED WHEN THE MAIN SIZE IS 2 INCH OR SMALLER.
- 3.) HEAVY DUTY VALVE BOXES, COMPLETE, MUST BE USED IN PLACE OF ROADWAY BOXES WHEN THE CURB VALVE IS LOCATED IN ROADWAYS OR ASPHALT DRIVES.
- 4.) WHEN CONNECTING A NEW 1" SERVICE TO AN EXISTING 3/4" SERVICE, THE CURB VALVE SIZE SHALL BE A 1"x3/4" REDUCING CURB VALVE.
- 5.) BRASS REDUCING BUSHINGS OR SWIVEL ELLS WILL NOT BE ALLOWED.
- 6.) APPROVED EQUALS MAY BE USED IN PLACE OF SPECIFIED ITEMS.

TYPICAL WATER SERVICE
(C94)



NOTES:

1. GRANULAR BACKFILL MATERIAL SHALL BE IN ACCORDANCE WITH CITY STANDARD DRAWING 19.
2. SAW CUT EXISTING PAVEMENT, SEAL JOINT PER ODOT ITEM 423 - CRACK SEALING, TYPE IV. INCLUDE COST IN BID PRICE FOR THE PROPOSED PAVEMENT.
3. IF ADJACENT PAVEMENT IS DAMAGED OR UNDERMINED DURING CONSTRUCTION, ADDITIONAL PAVEMENT SHALL BE SAW CUT AND REMOVED IN ORDER TO PROVIDE A SOUND PAVEMENT EDGE.
4. IN THE EVENT THAT THE SAW CUT WOULD LIE WITHIN 3 FEET OF THE EDGE OF PAVEMENT OR FACE OF CURB, THE PAVEMENT REPLACEMENT SHALL EXTEND TO THE EDGE OF PAVEMENT OR FACE OF CURB.

PAY LIMITS - TRENCH & ROADWAY DETAIL
FOR D.I.P.
 (C175)