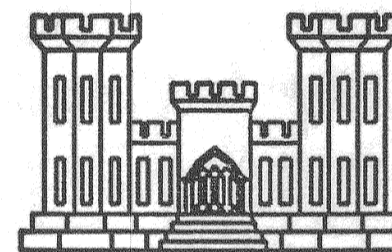


SAFETY ON THIS JOB  
DEPENDS ON YOU

**CENTRAL AND SOUTHERN FLORIDA PROJECT  
UPPER ST. JOHNS RIVER BASIN**

**PLANS  
FOR  
CONSTRUCTION OF**

**FELLSMERE GRADE ACCESS**



**DEPARTMENT OF THE ARMY  
JACKSONVILLE DISTRICT, CORPS OF ENGINEERS  
JACKSONVILLE, FLORIDA**

**1994**

**ADVANCE COPY**  
SUBJECT TO REVISION. NOT TO BE  
USED FOR CONSTRUCTION PURPOSES.

TO ACCOMPANY SOLICITATION  
NO. DACW17-  
DATED:

95 % STATUS REVIEW

**PRELIMINARY**

NOT TO BE USED FOR CONSTRUCTION  
DATE OF ISSUE 03/16/95

 **"INCREASE PROFIT - SUBMIT VECP'S"**

D. O. FILE NO. 490-36,911

Z:\PRJ\25853\DGN\FELCVR.DGN

CENTRAL AND SOUTHERN FLORIDA PROJECT  
UPPER ST. JOHNS RIVER BASIN

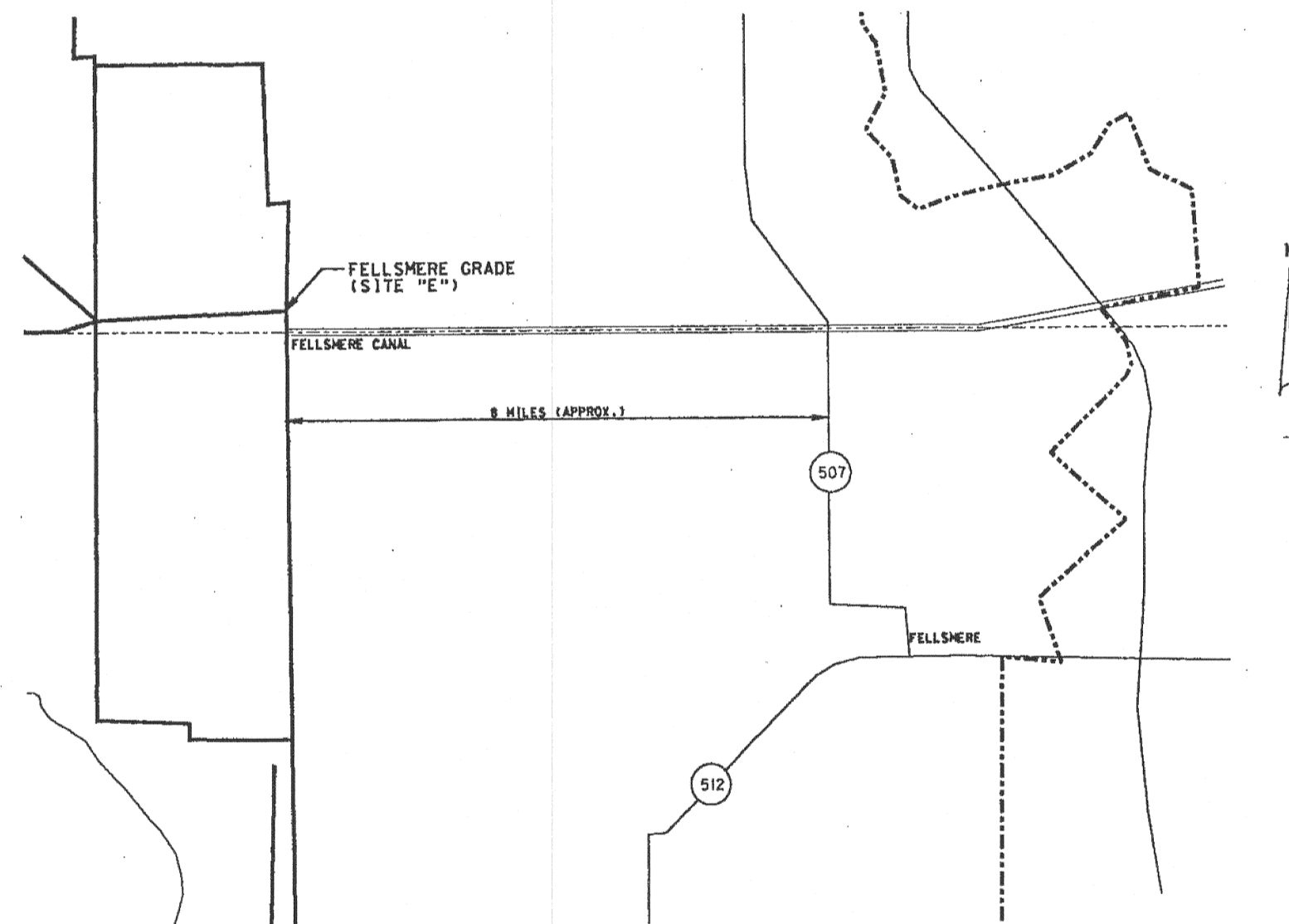
PLANS  
FOR  
CONSTRUCTION OF  
**FELLSMERE GRADE ACCESS**

DEPARTMENT OF THE ARMY  
JACKSONVILLE DISTRICT, CORPS OF ENGINEERS  
JACKSONVILLE, FLORIDA  
1994

SAFETY ON THIS JOB  
DEPENDS ON YOU

NO.			REVISIONS		
NO.	SYM.	ZONE	DESCRIPTION	DATE	APPROVED

INDEX TO DRAWINGS	
DWG.NO.	TITLE
<b>GENERAL</b>	
-	COVER SHEET
I-1	INDEX TO DRAWINGS
<b>CIVIL</b>	
C-1	GRADING PLAN
C-2	SITE PLAN
C-3	TRAFFIC FLOW, SIGNAGE, AND LANDSCAPE PLAN
C-4	MISCELLANEOUS SECTIONS, DETAILS AND PROFILES
C-5	LEEVE CROSSING, SITE AND GRADING PLAN
<b>STRUCTURAL</b>	
S-1	FISHING PLATFORM PLAN & ELEVATION
S-2	FISHING PLATFORM SECTIONS & DETAILS
S-3	AIR BOAT RAMP & CROSSING PLANS, SECTIONS, AND DETAILS



LOCATION MAP  
NOT TO SCALE

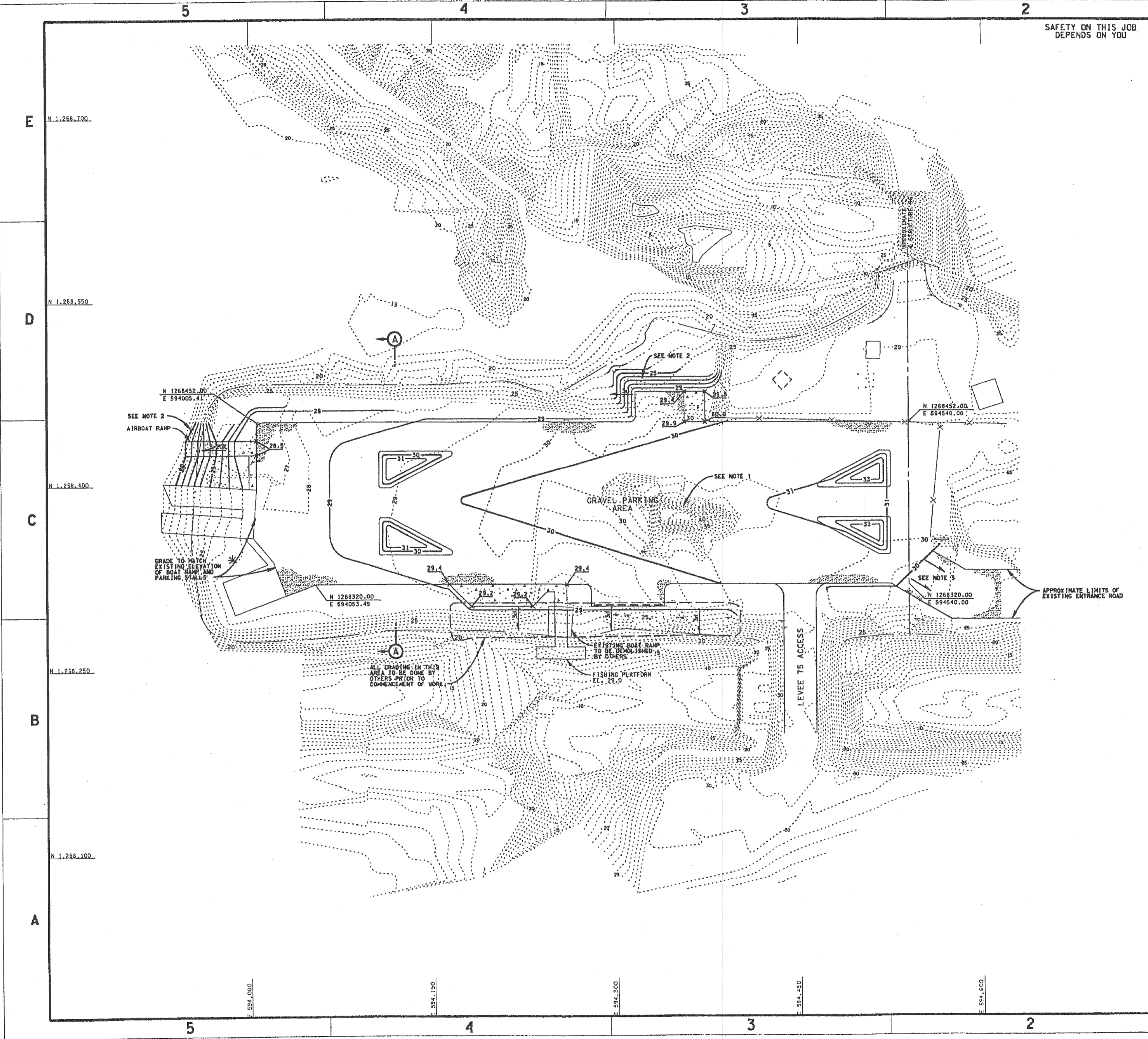
95 % STATUS REVIEW  
**PRELIMINARY**  
NOT TO BE USED FOR CONSTRUCTION  
DATE OF ISSUE 03/16/95

BLACK & VEATCH 8400 WARD PARKWAY KANSAS CITY, MISSOURI	
DEPARTMENT OF THE ARMY JACKSONVILLE DISTRICT, CORPS OF ENGINEERS JACKSONVILLE, FLORIDA	
CENTRAL AND SOUTHERN FLORIDA PROJECT UPPER ST. JOHNS RIVER BASIN <b>FELLSMERE GRADE ACCESS RECREATION SITE</b>	
DESIGN ENGR A.M.	INDEX TO DRAWINGS
DRAWN BY: XLL CRO. BY: XLL	INV. NO. F DATE: F SCALE: NONE DATE: F
SIZE DRAWING NO. F	SHEET 2 OF 2

D.O. FILE NO. 490-36,911

SAFETY ON THIS JOB  
DEPENDS ON YOU

NO.		SYMBOL	ZONE	REVISIONS	DESCRIPTION	DATE	APPROVED



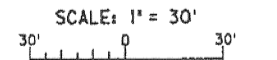
**LEGEND**

△	HORIZONTAL AND VERTICAL CONTROL	⌋	WOODS LINE
⊙	POWER POLE	⊕	DECIDUOUS TREE
—	GUARDRAIL	—	CULVERT OR PIPE
—	FENCE	⊙	LOW WIRE ELEVATION
---	WATERS EDGE	7.4	SPOT ELEVATION
---	TOP OF BANK	⊙	MANHOLE
*	PALM TREE	⌋	INDEX CONTOUR
		⌋	INTERMEDIATE CONTOUR

**NOTES:**

1. STOCKPILE TO BE USED BY OTHERS AS BACKFILL AFTER REMOVAL OF BOAT RAMP. AREA WHERE STOCKPILE IS LOCATED WILL BE LEVELED BY OTHERS TO A ELEVATION OF 30.0' PRIOR TO BEGINNING OF CONSTRUCTION.
2. DISTURBED AREAS WITH SLOPES 3 HORIZONTAL TO 1 VERTICAL OR STEEPER SHALL HAVE EROSION CONTROL MATERIAL INSTALLED.
3. GRADE TO MATCH EXISTING AT A SLOPE NO GREATER THAN 15 TO 1.
4. FOR DETAIL OF EXIT RAMP FROM EXISTING GRASSED PARKING AREA ON THE SOUTHEAST CORNER OF THE SITE, SEE DETAIL ON DWG. NO. C-4.
5. FOR SECTION A-A SEE DWG. NO. C-4.

95 % STATUS REVIEW  
**PRELIMINARY**  
NOT TO BE USED FOR CONSTRUCTION  
DATE OF ISSUE 03/16/95

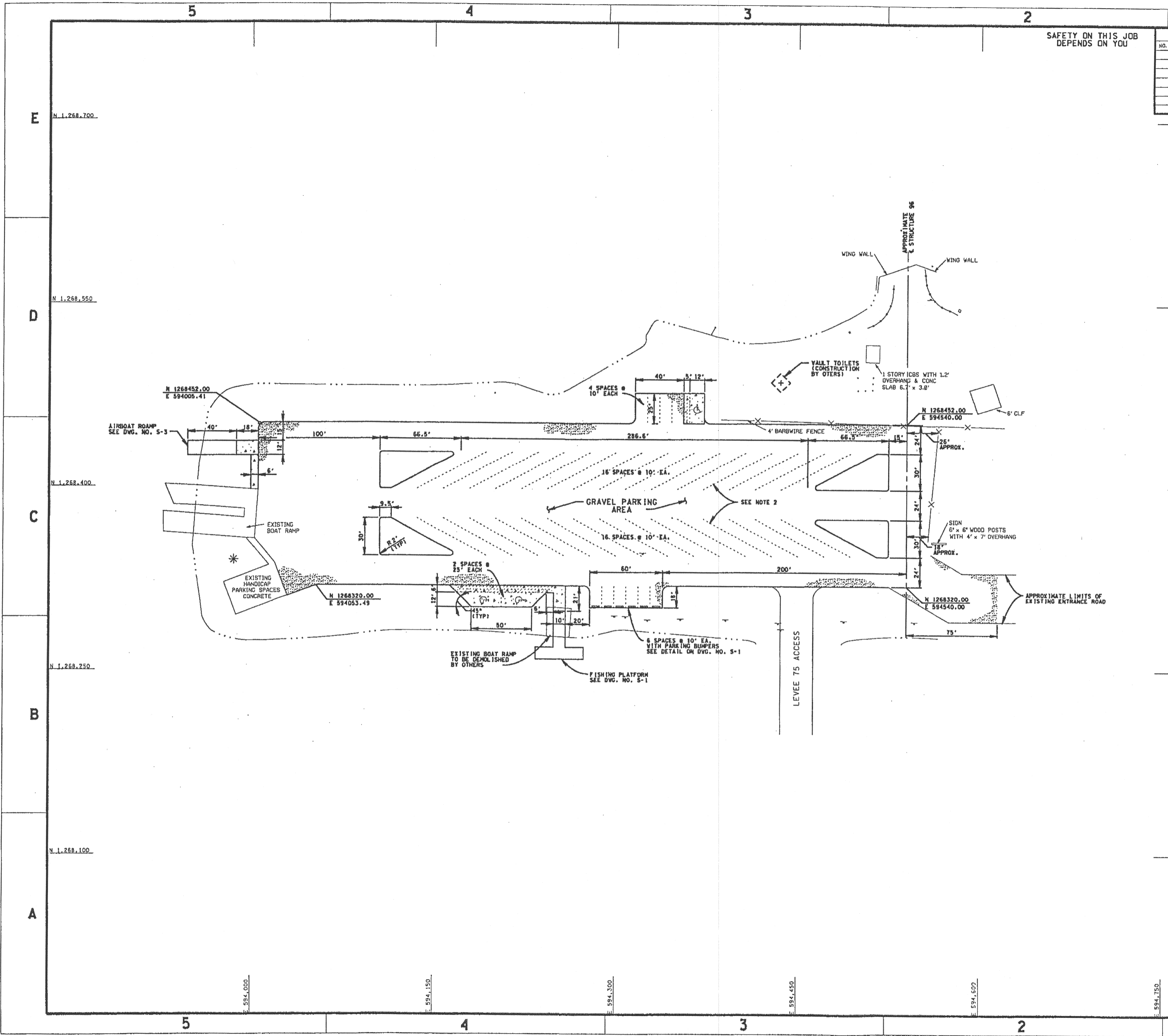


BLACK & VEATCH 8400 WARD PARKWAY KANSAS CITY, MISSOURI			
DEPARTMENT OF THE ARMY JACKSONVILLE DISTRICT, CORPS OF ENGINEERS JACKSONVILLE, FLORIDA			
CENTRAL AND SOUTHERN FLORIDA PROJECT UPPER ST. JOHNS RIVER BASIN FELLSMERE GRADE RECREATION SITE			
DESIGN ENGR. AM	INV. NO.	SIZE F	DRAWING NO. C-1
DWN. BY/CAD. BY JOC	DATED:	SCALE:	SHEET 4 OF

D.O. FILE NO. 490-36,911

SAFETY ON THIS JOB  
DEPENDS ON YOU

NO.		SYMBOL	ZONE	REVISIONS	DATE	APPROVED
				DESCRIPTION		



LEGEND

△	HORIZONTAL AND VERTICAL CONTROL	⊙	WOODS LINE
◇	POWER POLE	⊖	DECIDUOUS TREE
—	GUARDRAIL	⊖	CULVERT OR PIPE
—	FENCE	⊖	LOW WIRE ELEVATION
---	WATERS EDGE	⊖	7.4 SPOT ELEVATION
---	TOP OF BANK	⊖	MANHOLE
*	PALM TREE	⊖	INDEX CONTOUR
		⊖	INTERMEDIATE CONTOUR

**SURVEY CONTROL POINTS**

- ELEVATIONS ARE IN HUNDREDTHS AND REFER TO MEAN SEA LEVEL (NATIONAL GEODESIC VERTICAL DATUM OF 1929.)
- PLANE COORDINATES ARE BASED ON THE TRANSVERSE MERCATOR PROJECTION FOR FLORIDA, EAST ZONE.
- HORIZONTAL CONTROL IS ESTABLISHED FROM THE FOLLOWING CONTROL POINTS.
 

MONUMENT FCSJ 0170:	N 1268851.320
	E 594523.380
	EL 20.3000'

STATION IS LOCATED 165 FEET NORTH OF NORTHWEST END OF GUARD RAIL FOR STRUCTURE S-96, 180 FEET EAST OF SOUTHEAST CORNER OF BARBED WIRE FENCE, AND 40.7 FEET SOUTH OF BARBED WIRE FENCE.

MARK IS A STANDARD COE BRONZE DISK SET IN TOP OF 7 INCH CONCRETE COLLAR, STAMPED FCSJ-170, 1965.

MONUMENT FCSJ 0306:	N 1268611.460
	E 594534.170
	EL 45.9700'

STATION IS ON TOP OF STRUCTURE 96 IN CENTER OF PIER BETWEEN FLOOD GATES.

MARK IS A STANDARD COE BRONZE DISK SET FLUSH IN THE TOP DECK OF STRUCTURE STAMPED FCSJ 306, 1969.

VERTICAL CONTROL IS ESTABLISHED FROM FCSJ 305.

FCSJ 305 IS LOCATED AT STRUCTURE 96.

MARK IS A STANDARD COE BRONZE DISK SET FLUSH IN THE TOP OF STRUCTURE WALL STAMPED FCSJ-305 1969".  
BM EL = 28.950.

**NOTES:**

- THE CONTRACTOR IS TO PROVIDE A STAFF GAGE, ATTACHED TO THE TIMBER PILE AT THE END OF THE DOCK, FOR INDICATION OF WATER LEVEL.
- NO STRIPING WILL BE REQUIRED ON GRAVEL SURFACE. STRIPS ARE SHOWN FOR CLARIFICATION ONLY.
- ALL AREAS DISTURBED BY CONSTRUCTION SHALL HAVE PROPER GROUND COVER ESTABLISHED AS SPECIFIED BY SPECIFICATION SECTION 02935-TURF.

95% STATUS REVIEW  
**PRELIMINARY**  
NOT TO BE USED FOR CONSTRUCTION  
DATE OF ISSUE 03/16/95

SCALE: 1" = 30'

DESIGNER ENG. A.M.		SITE PLAN SHEET 1	
DRAWN BY: C.K.D. BY: .J.S.C.	INV. NO. DATED:	DATE: F	SIZE DRAWING NO. C-2
SCALE: 1"=30'	DATED:	SHEET 4 OF	

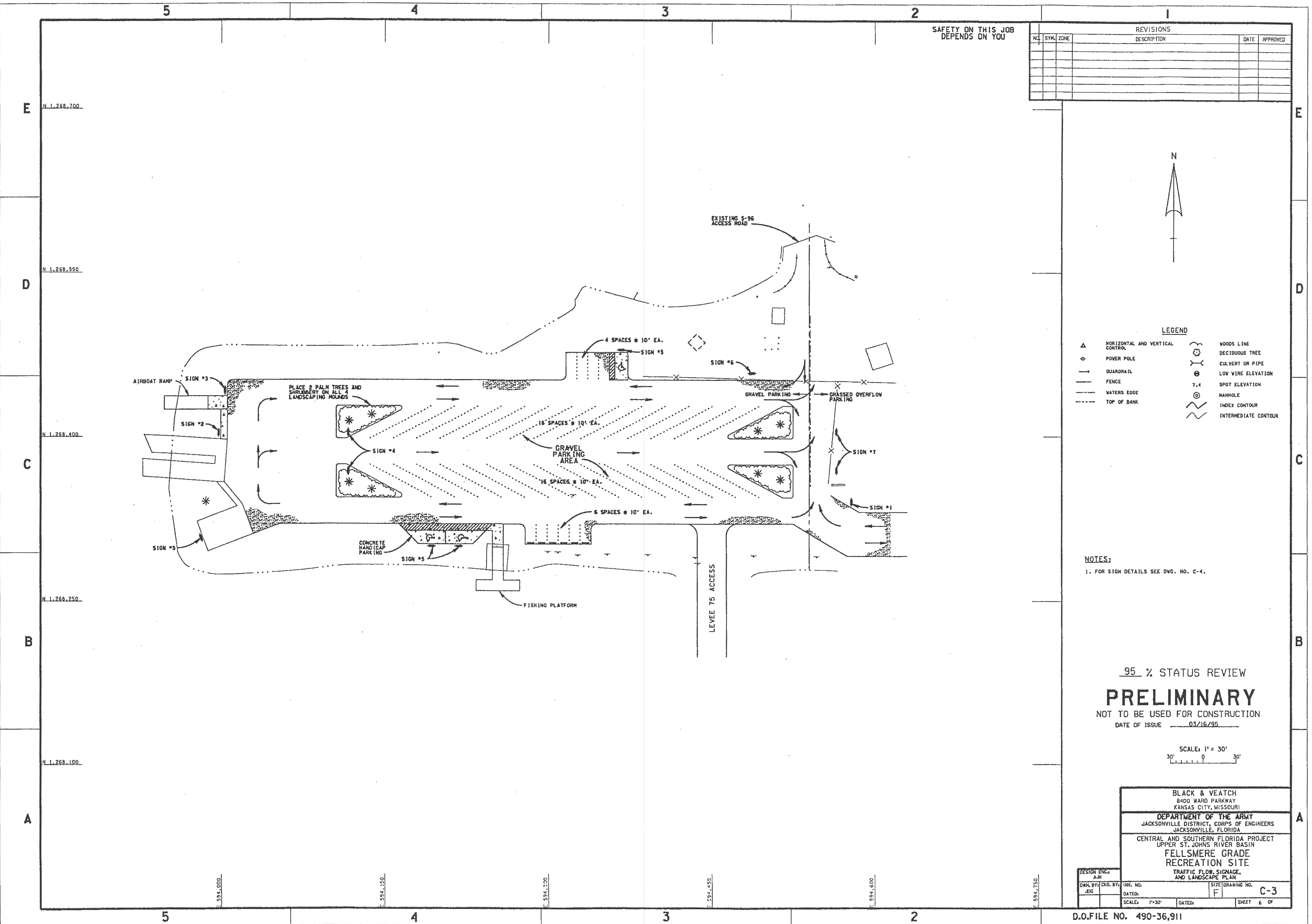
BLACK & VEATCH  
8400 WARD PARKWAY  
KANSAS CITY, MISSOURI

DEPARTMENT OF THE ARMY  
JACKSONVILLE DISTRICT, CORPS OF ENGINEERS  
JACKSONVILLE, FLORIDA

CENTRAL AND SOUTHERN FLORIDA PROJECT  
UPPER ST. JOHNS RIVER BASIN  
FELLSMERE GRADE  
RECREATION SITE

SAFETY ON THIS JOB  
DEPENDS ON YOU

REVISIONS					
NO.	SYM.	ZONE	DESCRIPTION	DATE	APPROVED



**LEGEND**

▲	HORIZONTAL AND VERTICAL CONTROL	⊗	WOODS LINE
⊙	POWER POLE	⊗	DECIDUOUS TREE
—	QUADRIL	⊗	CULVERT OR PIPE
---	FENCE	⊗	LOW WIRE ELEVATION
---	WATERS EDGE	⊗	SPOT ELEVATION
---	TOP OF BANK	⊗	MANHOLE
		⊗	INDEX CONTOUR
		⊗	INTERMEDIATE CONTOUR

**NOTES:**  
1. FOR SIGN DETAILS SEE DVG. NO. C-4.

95 % STATUS REVIEW  
**PRELIMINARY**  
NOT TO BE USED FOR CONSTRUCTION  
DATE OF ISSUE 03/16/95

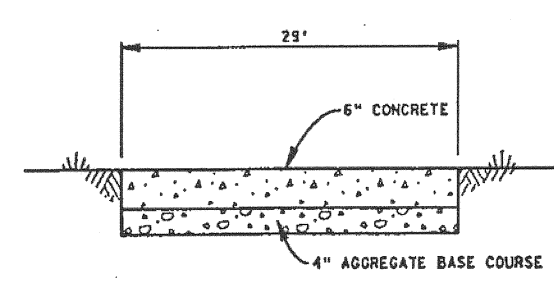
SCALE: 1" = 30'  
30' 0 30'

DESIGN ENG. A.R.		DRAWING NO. C-3	
DRN. BY: J.E.G.	CHK. BY: J.E.G.	DATE: 03/16/95	SHEET 6 OF 6
BLACK & VEATCH 8400 WARD PARKWAY KANSAS CITY, MISSOURI DEPARTMENT OF THE ARMY JACKSONVILLE DISTRICT, CORPS OF ENGINEERS JACKSONVILLE, FLORIDA CENTRAL AND SOUTHERN FLORIDA PROJECT UPPER ST. JOHNS RIVER BASIN FELLSMERE GRADE RECREATION SITE TRAFFIC FLOW, SIGNAGE, AND LANDSCAPE PLAN			

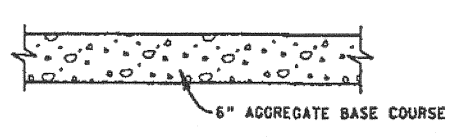
D.O.FILE NO. 490-36,911

SAFETY ON THIS JOB  
DEPENDS ON YOU

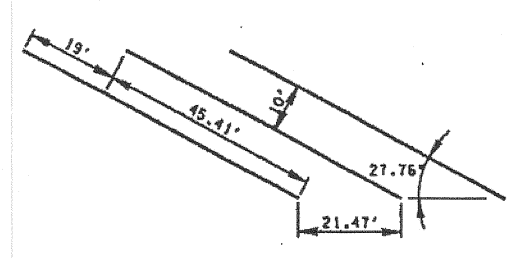
REVISIONS					
NO.	SYM.	ZONE	DESCRIPTION	DATE	APPROVED



**HANDICAP PARKING SECTION**  
SCALE: NONE

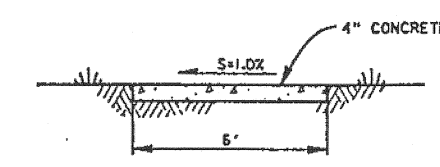


**TYPICAL PARKING SECTION**  
SCALE: "C"

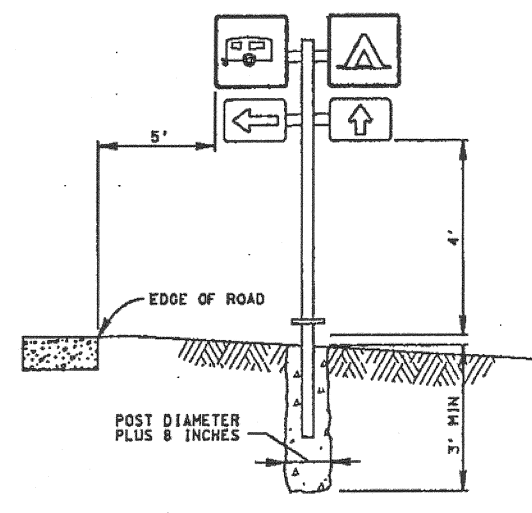


NOTE: NO STRIPING TO OCCUR. STALL LAYOUT FOR CONTRACTOR INFORMATION.

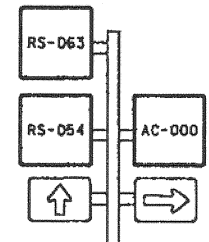
**TYPICAL PARKING STALL**  
SCALE: "NONE"



**TYPICAL SIDEWALK SECTION**  
SCALE: "NONE"



**TYPICAL SIGN**



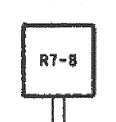
**SIGN #1**



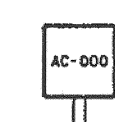
**SIGN #3**



**SIGN #4**



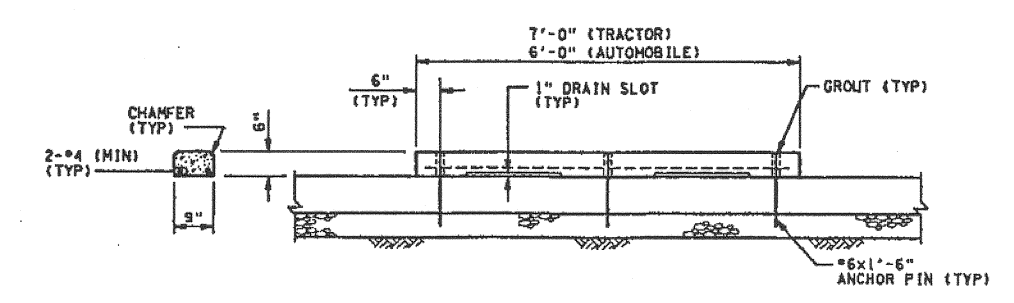
**SIGN #5**



**SIGN #6**

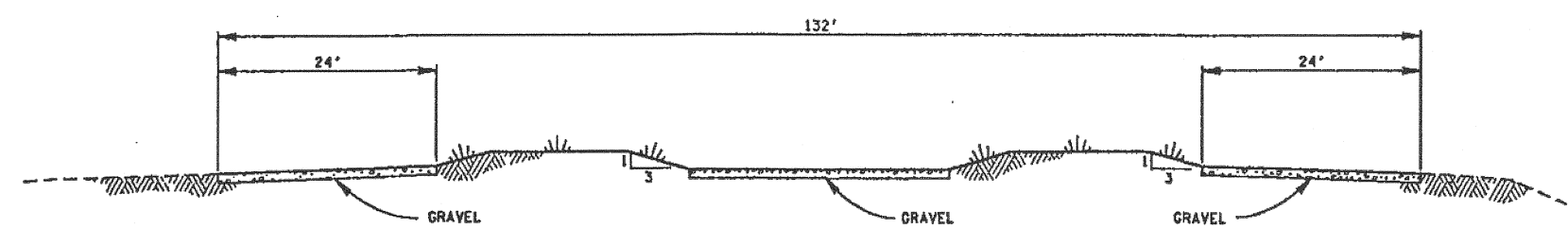


**SIGN #7**



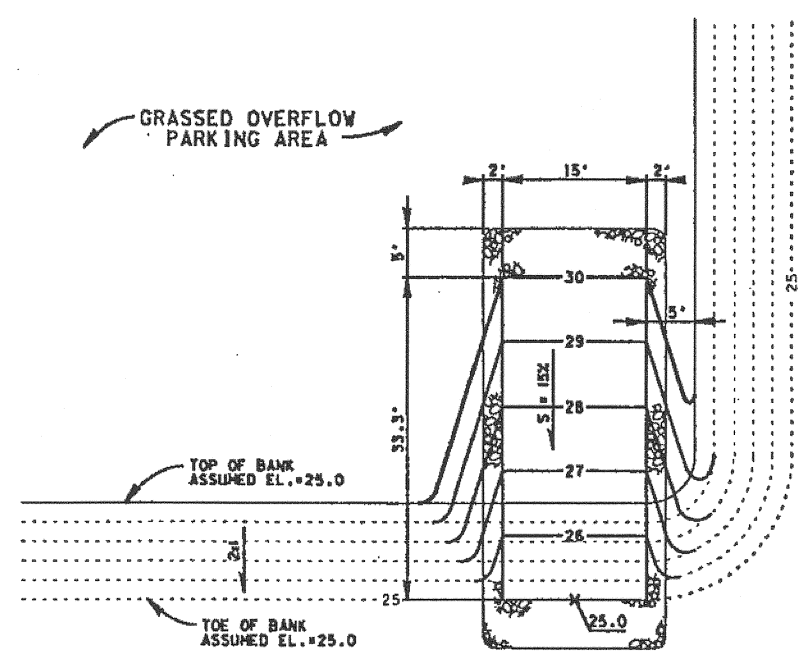
**PRECAST CONCRETE PARKING BUMPER DETAIL**  
SCALE: "NONE"

**SIGNAGE**  
SCALE: "NONE"



NOTE: FOR PLAN SEE DWG. NO. C-1.

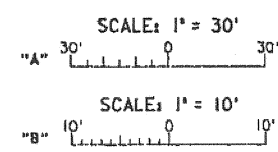
**SECTION A-A**  
SCALE: "B"



**EXIT RAMP FOR GRASSED PARKING AREA**  
SCALE: "B"

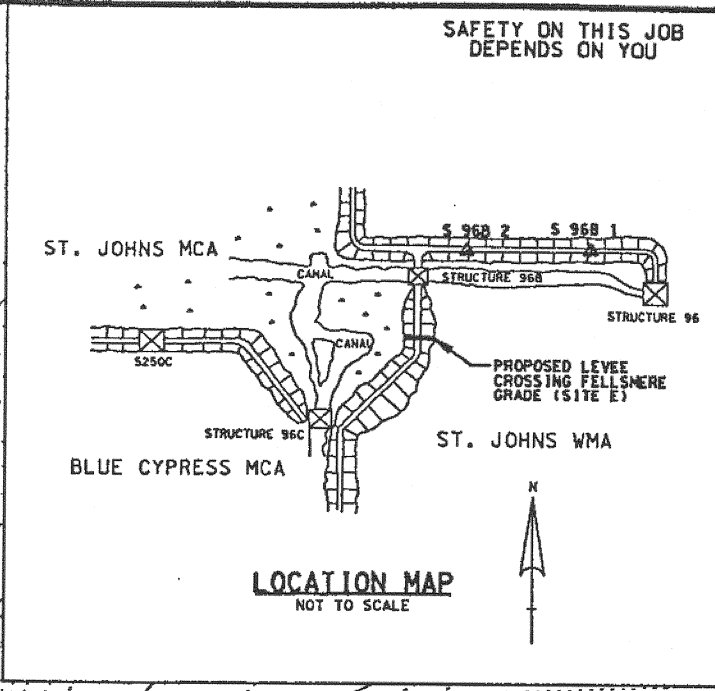
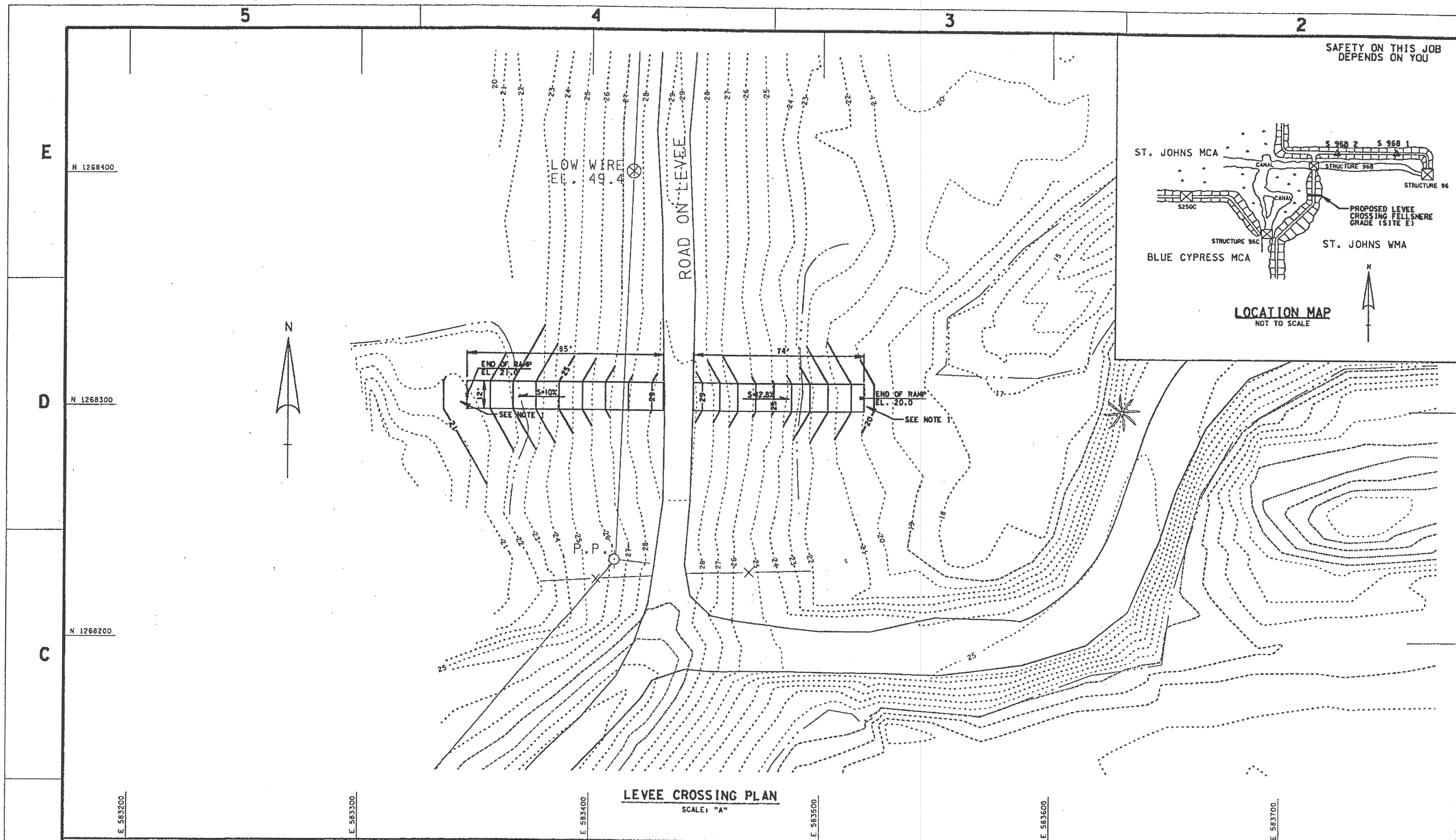
**NOTES:**  
1. FOR IDENTIFICATION OF SIGN TYPE SEE SPECIFICATION SECTION 02580 - PAVEMENT MARKINGS. ALL SIGNS SHALL BE IN ACCORDANCE WITH US ARMY CORPS OF ENGINEERS (USACE) SIGN STANDARDS MANUAL.

95 % STATUS REVIEW  
**PRELIMINARY**  
NOT TO BE USED FOR CONSTRUCTION  
DATE OF ISSUE 03/16/95



BLACK & VEATCH 8400 WARD PARKWAY KANSAS CITY, MISSOURI			
DEPARTMENT OF THE ARMY JACKSONVILLE DISTRICT, CORPS OF ENGINEERS JACKSONVILLE, FLORIDA			
CENTRAL AND SOUTHERN FLORIDA PROJECT UPPER ST. JOHNS RIVER BASIN FELLSMERE GRADE ACCESS RECREATION SITE MISCELLANEOUS SECTIONS, DETAILS & PROFILES			
DESIGN ENG. AJH	INV. NO.	SIZE (DRAWING NO.)	C-4
DRAWN BY/EXD. BY JDC	DATED	F	
SCALE: AS NOTED	DATED	SHEET 7 OF	

D.O.FILE NO. 490-36,911



REVISIONS					
NO.	SYM.	ZONE	DESCRIPTION	DATE	APPROVED

**LEGEND**

▲	HORIZONTAL AND VERTICAL CONTROL	⊗	WOODS LINE
□	WOODEN HUB	⊙	DECIDUOUS TREE
○	IRON ROD SET	⊕	CULVERT OR PIPE
⊕	POWER POLE	⊙	LOW WIRE ELEVATION
—	GUARDRAIL	⊙	7.4 SPOT ELEVATION
—	FENCE	⊙	MANHOLE
—	WATERS EDGE	⊙	INDEX CONTOUR
		⊙	INTERMEDIATE CONTOUR

**SURVEY CONTROL POINTS:**

1. COORDINATES AND ELEVATIONS ON THIS DRAWING ARE BASED ON THE FOLLOWING CONTROL POINTS (LOCATED ON LOCATION PLAN):

**MONUMENT S 96B 1:** N 1269141.180, E 580308.6, EL. 30.1000'

LOCATION BREVARD COUNTY, C-54 TO REACH FROM THE POST OFFICE AT FELLSMERE, FLORIDA, GO WEST AND NORTH ON SR 607, 4 MILES TO THE NORTH BANK OF C-54; THEN PROCEED WEST ON THE NORTH CANAL BANK, 6.2 MILES TO STRUCTURE S-96; PROCEED WEST ON NORTH LEVEE, 0.9 MILE TO STATION LOCATION.

STATION IS LOCATED 10 FEET SOUTH OF CENTERLINE OF LEVEE, 1.5 FEET NORTH OF SOUTH TOP OF LEVEE, 4.2 FEET NORTH OF 4 FOOT HIGH SIGN POST, AND 39 FEET SOUTH OF 5 STRAND WIRE FENCE.

MARK IS A STANDARD COE BRONZE DISK SET IN 8 INCH CONCRETE COLLAR, FLUSH WITH GROUND STAMPED S 96B 1, 1986.

**MONUMENT FCSJ 0769:** N 1269158.070, E 586191.730, EL. 28.2400'

TO REACH FROM THE POST OFFICE AT FELLSMERE, FLORIDA, GO WEST AND NORTH ON COUNTY ROAD 507, 4 MILES TO NORTH BANK OF C-54; THEN PROCEED WEST ON THE NORTH BANK, 6.2 MILES TO TURN OUT AND STATION LOCATION.

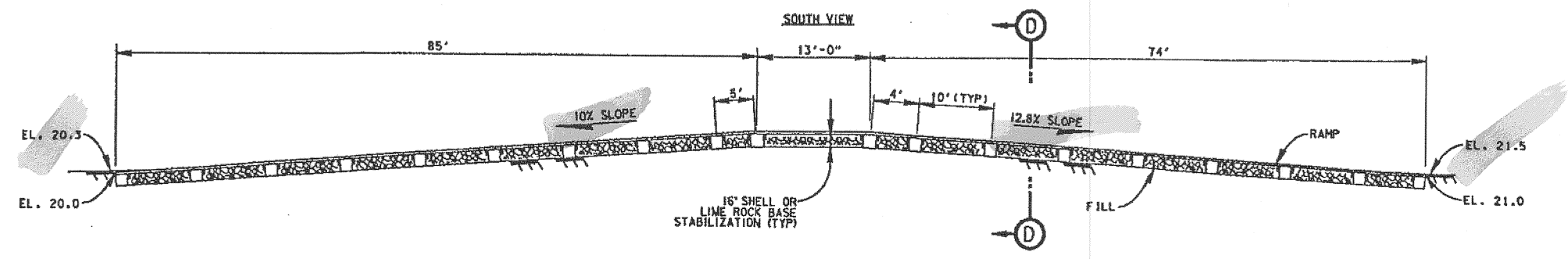
STATION IS LOCATED AT THE NORTHEAST END OF TURN OUT, 11 FEET SOUTH OF CENTERLINE OF LEVEE, 1.8 FEET SOUTH OF WITNESS POST WITH SIGN, 5 FEET NORTHWEST OF INTERSECTION OF SOUTH TOP OF TURN OUT, AND 38 FEET NORTHEAST OF THE SOUTHWEST CORNER OF TURN OUT.

MARK IS A STANDARD COE BRONZE DISK, SET IN 8 INCH CONCRETE COLLAR, 1.2 FOOT BELOW GROUND, S

**NOTES:**

1. DIRT SHALL BE PLACED ON LOWER END RAMP TO PROVIDE SMOOTH TRANSITION FOR AIRBOAT ACCESS DURING LOW WATER CONDITIONS. SEE LEVEE CROSSING PROFILE ON THIS DRAWING.

2. FOR SECTION D-D SEE DWG. NO. S-3.

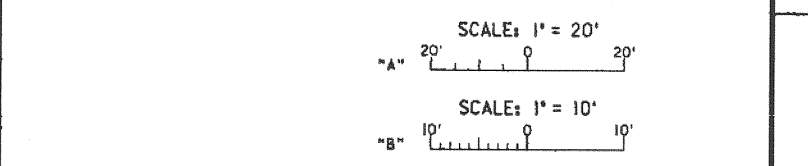


95% STATUS REVIEW

**PRELIMINARY**

NOT TO BE USED FOR CONSTRUCTION

DATE OF ISSUE 03/16/95



BLACK & VEATCH  
8400 WARD PARKWAY  
KANSAS CITY, MISSOURI

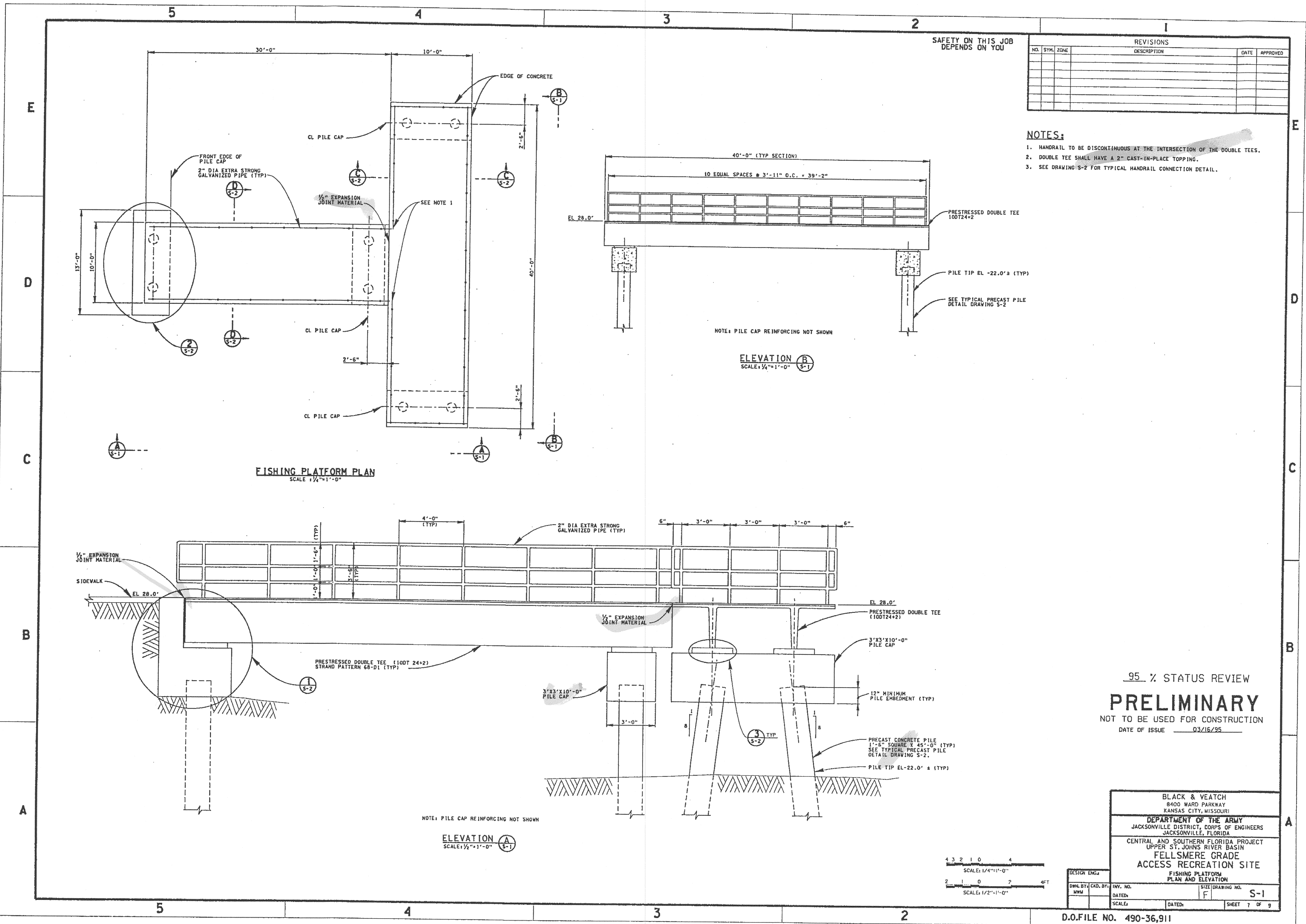
DEPARTMENT OF THE ARMY  
JACKSONVILLE DISTRICT, CORPS OF ENGINEERS  
JACKSONVILLE, FLORIDA

CENTRAL AND SOUTHERN FLORIDA PROJECT  
UPPER ST. JOHNS RIVER BASIN  
HIGHWAY 512 ACCESS  
RECREATION SITE  
GRADING PLAN

DESIGNER: A.H.  
DRAWN BY: JDC  
CHECKED BY: JDC  
DATE: 03/16/95  
SCALE: 1"=20'  
REV. NO.:  
DATE:  
SCALE: 1"=10'  
DATE:  
SHEET 3 OF 3

SAFETY ON THIS JOB  
DEPENDS ON YOU

NO.		SYM.	ZONE	REVISIONS	DATE	APPROVED
				DESCRIPTION		



- NOTES:**
- HANDRAIL TO BE DISCONTINUOUS AT THE INTERSECTION OF THE DOUBLE TEES.
  - DOUBLE TEE SHALL HAVE A 2" CAST-IN-PLACE TOPPING.
  - SEE DRAWING S-2 FOR TYPICAL HANDRAIL CONNECTION DETAIL.

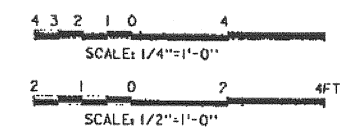
**FISHING PLATFORM PLAN**  
SCALE: 1/4"=1'-0"

**ELEVATION (B)**  
SCALE: 1/4"=1'-0"

**ELEVATION (A)**  
SCALE: 1/2"=1'-0"

95% STATUS REVIEW  
**PRELIMINARY**  
NOT TO BE USED FOR CONSTRUCTION  
DATE OF ISSUE 03/16/95

BLACK & VEATCH 8400 WARD PARKWAY KANSAS CITY, MISSOURI	
DEPARTMENT OF THE ARMY JACKSONVILLE DISTRICT, CORPS OF ENGINEERS JACKSONVILLE, FLORIDA	
CENTRAL AND SOUTHERN FLORIDA PROJECT UPPER ST. JOHNS RIVER BASIN FELLSMERE GRADE ACCESS RECREATION SITE	
FISHING PLATFORM PLAN AND ELEVATION	
DESIGN ENGR. MMW	INV. NO. F S-1
DATE:	DATE:
SCALE:	SHEET 1 OF 9

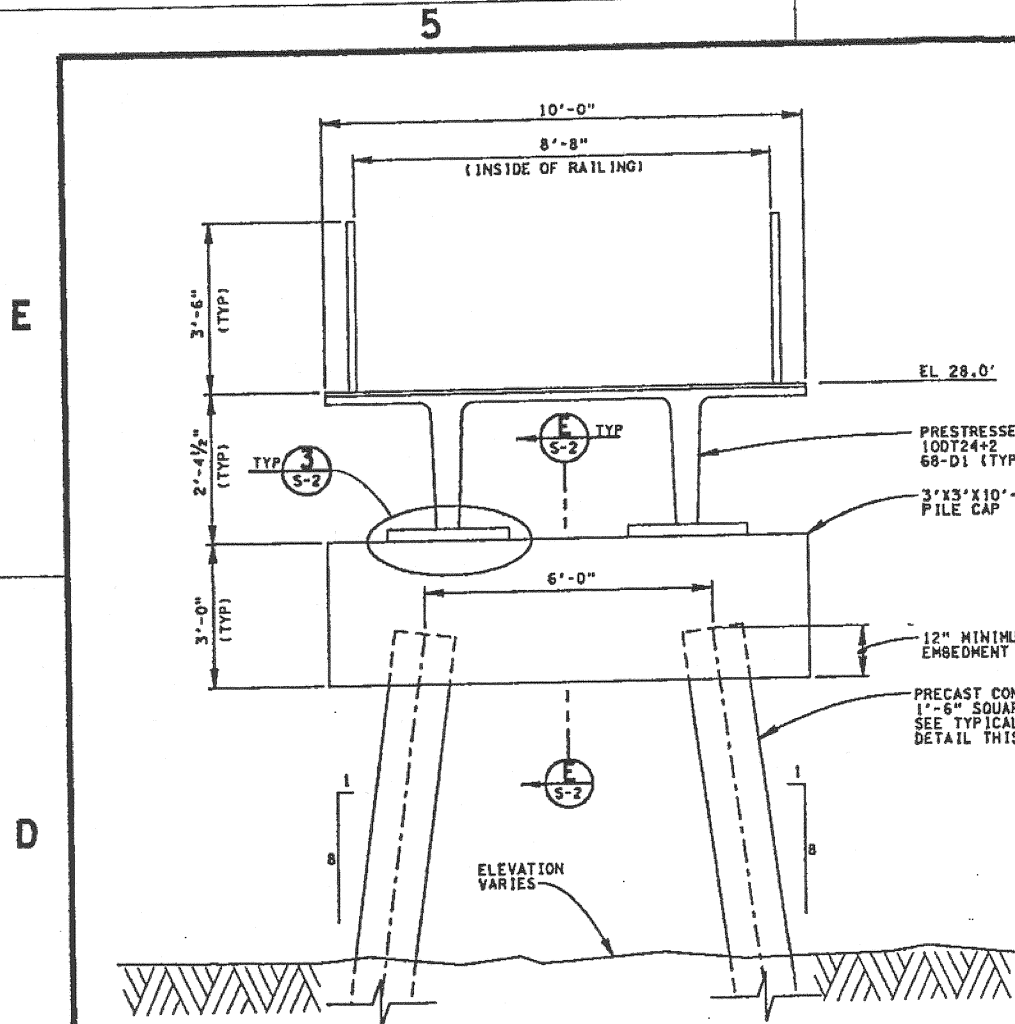


D.O. FILE NO. 490-36,911

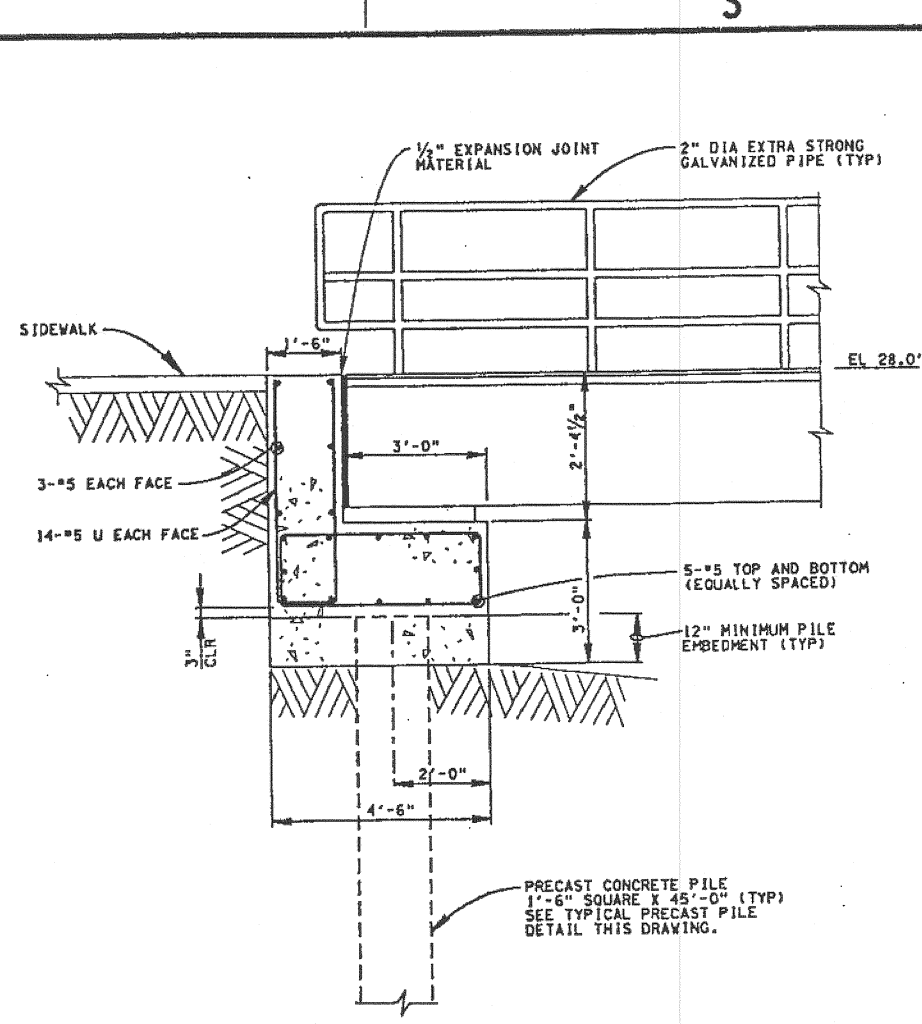


REVISIONS			
NO.	SYM.	ZONE	DATE

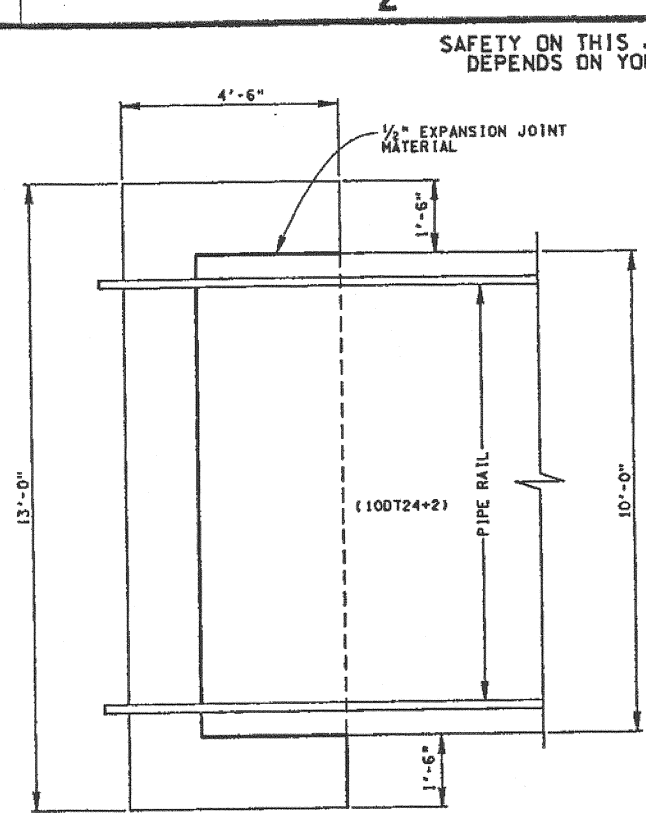
SAFETY ON THIS JOB  
DEPENDS ON YOU



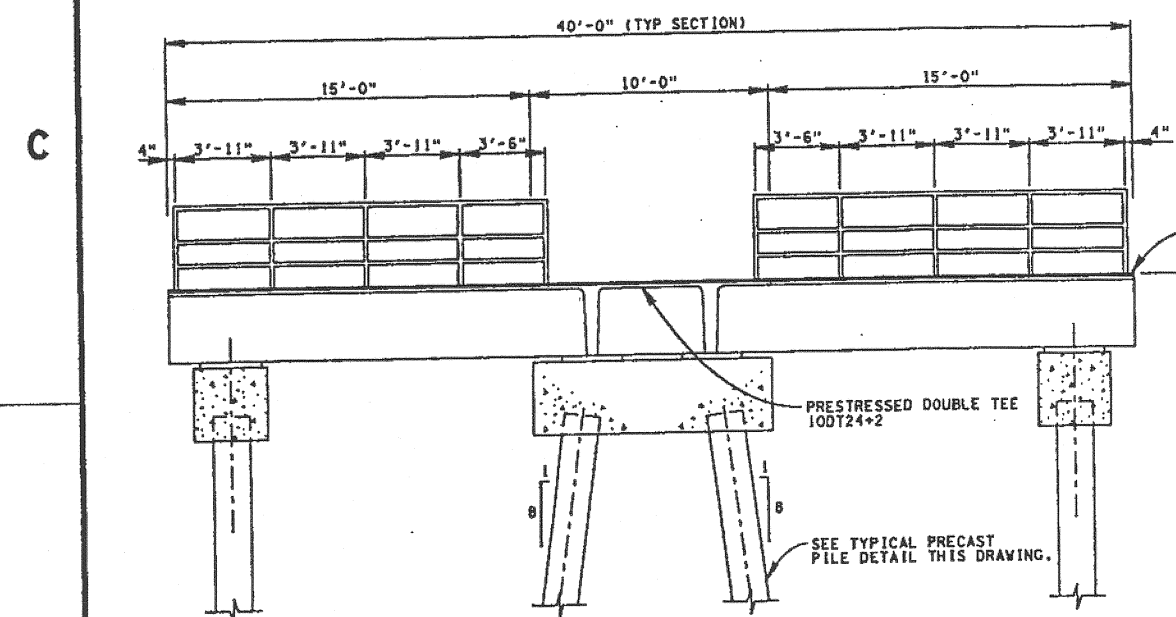
SECTION C  
SCALE: 1/2"=1'-0" (S-1)



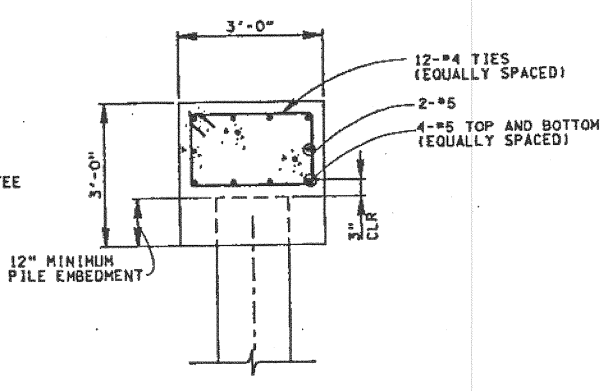
DETAIL 1  
SCALE: 1/2"=1'-0" (S-1)



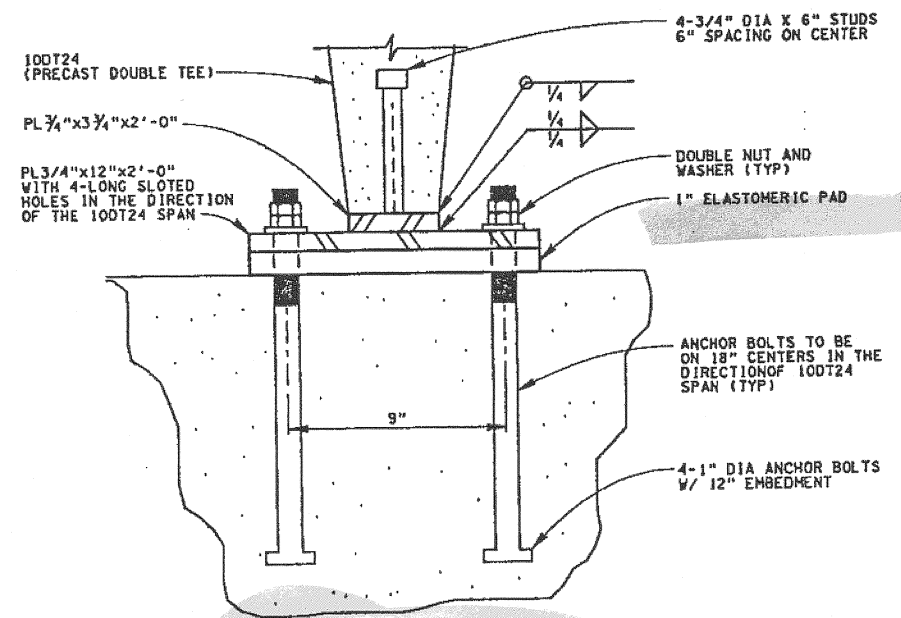
DETAIL 2  
SCALE: 1/2"=1'-0" (S-1)



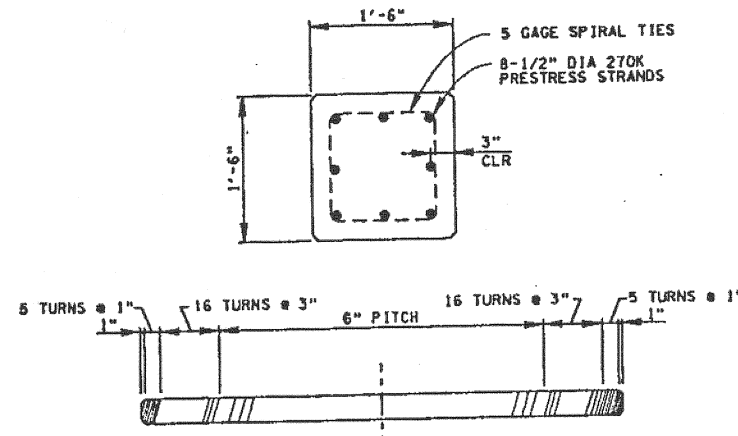
SECTION D  
SCALE: 1/4"=1'-0" (S-1)



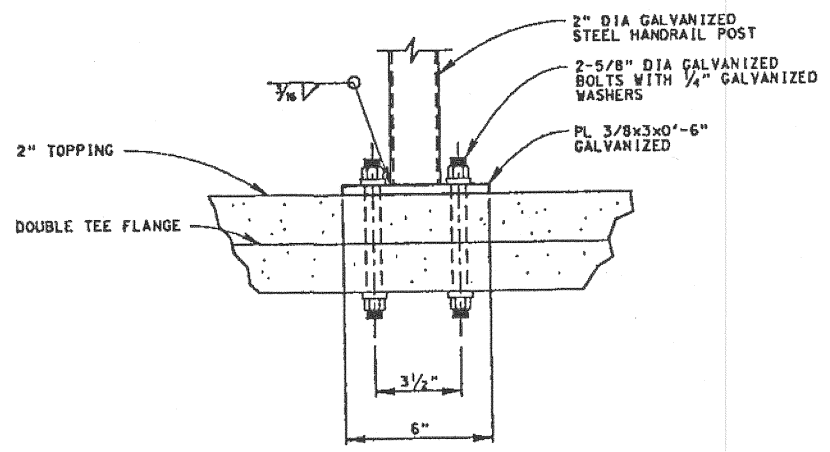
SECTION E  
SCALE: 1/2"=1'-0" (S-1)



DETAIL 3  
SCALE: 3/8"=1'-0" (S-1)



TYPICAL PRECAST/PRESTRESSED PILE DETAIL  
NOT TO SCALE



TYPICAL HANDRAIL CONNECTION DETAIL  
SCALE: 3/8"=1'-0"

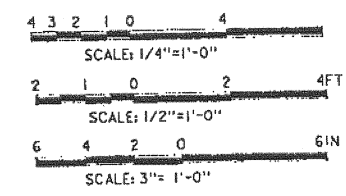
- NOTES:
- DOUBLE TEE SHALL HAVE A 2" CAST-IN PLACE TOPPING.
  - SEE THIS DRAWING FOR TYPICAL HANDRAIL CONNECTION DETAIL.

95 % STATUS REVIEW  
**PRELIMINARY**  
NOT TO BE USED FOR CONSTRUCTION  
DATE OF ISSUE 03/16/95

BLACK & VEATCH  
8400 WARD PARKWAY  
KANSAS CITY, MISSOURI

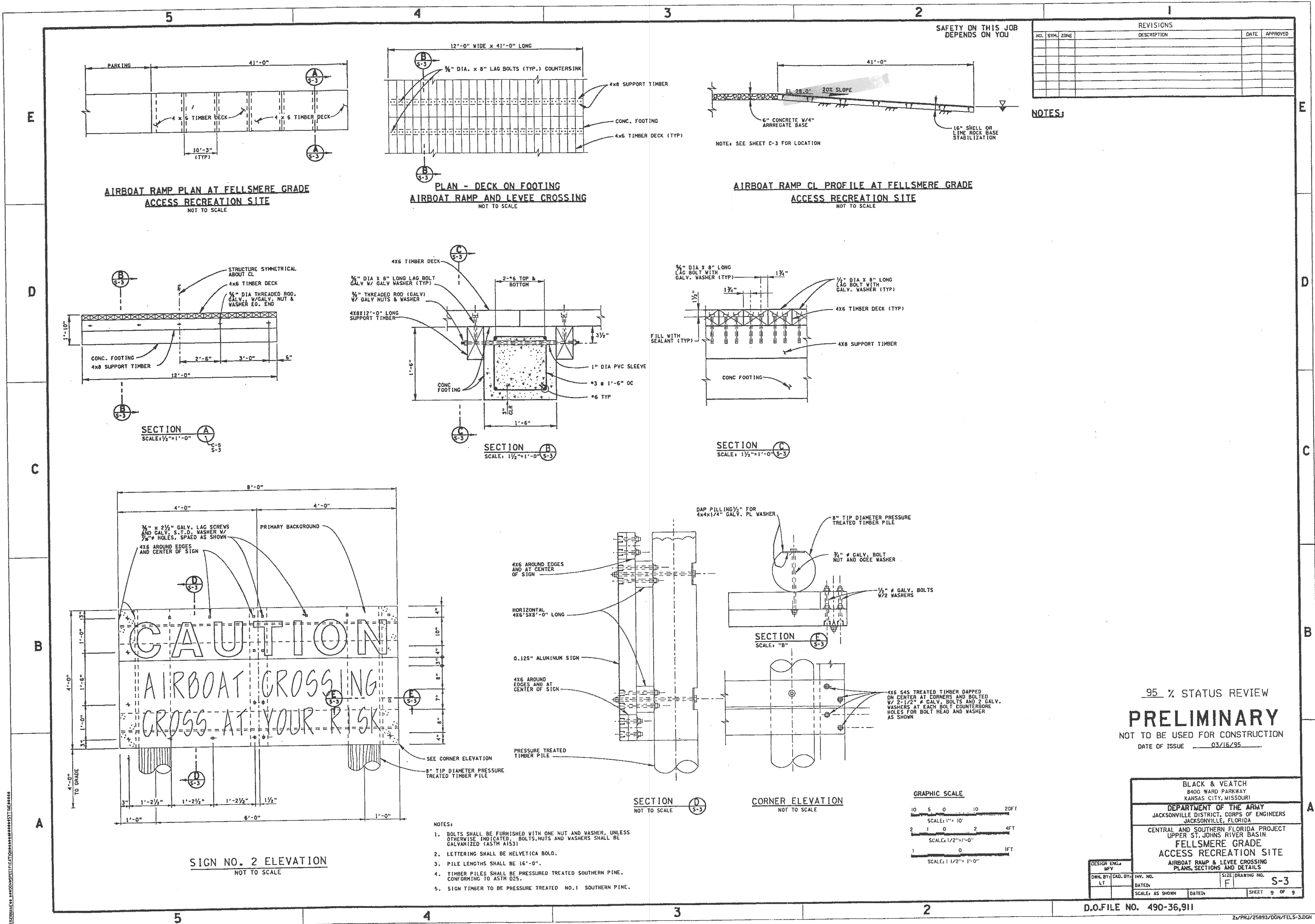
DEPARTMENT OF THE ARMY  
JACKSONVILLE DISTRICT, CORPS OF ENGINEERS  
JACKSONVILLE, FLORIDA

CENTRAL AND SOUTHERN FLORIDA PROJECT  
UPPER ST. JOHNS RIVER BASIN  
FELLSMERE GRADE  
ACCESS RECREATION SITE  
FISHING PLATFORM  
SECTIONS AND DETAILS



DESIGN ENGR.	CHKD. BY	INVT. NO.	DATE	SIZE	DRAWING NO.
	DLH			F	S-2

D.O. FILE NO. 490-36,911



SAFETY ON THIS JOB  
DEPENDS ON YOU

REVISIONS					
NO.	SYM.	ZONE	DESCRIPTION	DATE	APPROVED

NOTES:

**AIRBOAT RAMP PLAN AT FELLSMERE GRADE  
ACCESS RECREATION SITE**  
NOT TO SCALE

**PLAN - DECK ON FOOTING  
AIRBOAT RAMP AND LEVEE CROSSING**  
NOT TO SCALE

**AIRBOAT RAMP CL PROFILE AT FELLSMERE GRADE  
ACCESS RECREATION SITE**  
NOT TO SCALE

**SECTION A-A**  
SCALE: 1/2"=1'-0"

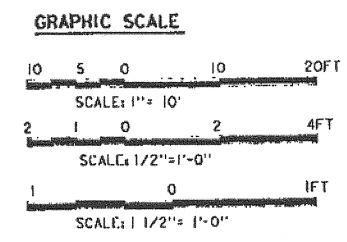
**SECTION B-B**  
SCALE: 1 1/2"=1'-0"

**SECTION C-C**  
SCALE: 1 1/2"=1'-0"

**SIGN NO. 2 ELEVATION**  
NOT TO SCALE

**SECTION D-D**  
NOT TO SCALE

**CORNER ELEVATION**  
NOT TO SCALE



- NOTES:
1. BOLTS SHALL BE FURNISHED WITH ONE NUT AND WASHER, UNLESS OTHERWISE INDICATED. BOLTS, NUTS AND WASHERS SHALL BE GALVANIZED (ASTM A153).
  2. LETTERING SHALL BE HELVETICA BOLD.
  3. PILE LENGTHS SHALL BE 16'-0".
  4. TIMBER PILES SHALL BE PRESSURE TREATED SOUTHERN PINE, CONFORMING TO ASTM D25.
  5. SIGN TIMBER TO BE PRESSURE TREATED NO. 1 SOUTHERN PINE.

95 % STATUS REVIEW  
**PRELIMINARY**  
NOT TO BE USED FOR CONSTRUCTION  
DATE OF ISSUE 03/16/95

BLACK & VEATCH  
8400 WARD PARKWAY  
KANSAS CITY, MISSOURI

DEPARTMENT OF THE ARMY  
JACKSONVILLE DISTRICT, CORPS OF ENGINEERS  
JACKSONVILLE, FLORIDA

CENTRAL AND SOUTHERN FLORIDA PROJECT  
UPPER ST. JOHNS RIVER BASIN  
FELLSMERE GRADE  
ACCESS RECREATION SITE  
AIRBOAT RAMP & LEVEE CROSSING  
PLANS, SECTIONS AND DETAILS

DESIGN ENGR. M.F.V.  
DWN. BY: CAD. BY: INV. NO.: L.T., DATED: SCALE: AS SHOWN, DATE: SIZE: DRAWING NO. S-3, SHEET 9 OF 9

D.O.FILE NO. 490-36,911