

QUANTITIES

GENERAL NOTES

PROJECT No. 18C-S-0664	YEAR 2021	SHEET No. 2	
REVISIONS			
No.	DATE	BY	BRIEF DESCRIPTION
1	10-22-2021	JC	Added Item 22.16 and Modified Item 22.15

ITEM	DESCRIPTION	QUANTITIES	UNIT
1.10	MOBILIZATION OF FORCES, SUPPLIES AND EQUIPMENT (MAX. AMOUNT = \$14,000 + 1% CONTRACT AMOUNT)	1	L.S.
2.10	CLEARING AND GRUBBING	1	L.S.
① 3.10	REMOVAL OF STRUCTURES AND OBSTRUCTIONS	1	L.S.
4.20	COMMON EXCAVATION	1,300	C.Y.
4.40	BORROW EXCAVATION	85	C.Y.
② 5.10	MINERAL AGGREGATE BASE, TYPE A BASE, GRADING D	200	TON
③ 5.30	MAINTENANCE STONE	200	TON
7.10	TRACKLESS TACK COAT (TTT-1)	150	GAL.
9.20	BITUMINOUS PLANT MIX BASE, GRADING "B-M"	70	TON
9.50	BITUMINOUS PLANT MIX BASE, GRADING "C-S"	11	TON
10.10	ASPHALTIC CONCRETE SURFACE, GRADING "D"	300	TON
12.65	6" DETACHED CONCRETE CURB, TYPE A	190	L.F.
④ 13.10	CONCRETE SIDEWALKS	8,250	S.F.
⑤ 13.11	CONCRETE STEPS WITH HANDRAIL	1	EACH
④ 13.12	CONCRETE SIDEWALKS w/ INTEGRAL CURB	2,600	S.F.
13.20	CONCRETE DRIVEWAYS	2,050	S.F.
13.21	CONCRETE DRIVEWAYS, HIGH EARLY STRENGTH	2,050	S.F.
20.12	15" R.C.P.	284	L.F.
20.14	18" R.C.P.	293	L.F.
20.16	24" R.C.P.	26	L.F.
20.34	24" x 38" R.C.E.P.	89	L.F.
20.35	29" x 45" R.C.E.P.	86	L.F.
22.12	No. 12 CATCH BASIN (0'-4' DEEP)	1	EACH
22.13	No. 12 CATCH BASIN (4'-8' DEEP)	1	EACH
22.14	No. 42 CATCH BASIN (0'-4' DEEP)	1	EACH
22.15	AREA DRAIN CATCH BASIN (COK-1, TYPE B FRAME AND GRATE)	5	EACH
22.16	AREA DRAIN CATCH BASIN (COK-1, TYPE C FRAME AND GRATE)	3	EACH
22.19	29" x 45" HEADWALL (COK-3)	2	EACH
22.21	15" FLARED END SECTION	2	EACH
22.23	24" FLARED END SECTION	1	EACH
22.24	24" x 38" FLARED END SECTION	1	EACH
22.41	48" DIA. MANHOLE (4'-8' DEEP)	1	EACH
23.20	ADJUSTING STORM SEWER, CATCH BASIN FRAMES	1	EACH
24.20	ADJUSTMENT OF SANITARY SEWER LATERAL	3	EACH
24.30	ADJUSTMENT OF SANITARY SEWER CLEANOUT	3	EACH
25.30	RIP RAP, TDOT CLASS A-3	225	TON
26.10	TOP SOIL (4" THICK)	3,200	S.Y.
27.10	SEEDING	320	S.Y.
28.10	SODDING, FESCUE	3,200	S.Y.
31.10	EROSION AND SEDIMENT CONTROL	1	L.S.
34.10	CONSTRUCTION AREA TRAFFIC CONTROL	1	L.S.
36.50	NON-WOVEN GEOTEXTILE FABRIC FOR SUBSURFACE DRAINAGE	350	S.Y.
38.20	MILLING OF ASPHALT STREETS (1.5" PROFILE MILL)	300	TON
39.20	THERMOPLASTIC PAVEMENT MARKING (CROSSWALK)	26	L.F.
41.10	PAINTED PAVEMENT MARKING (4" LINE)	3,600	L.F.
63.10	SIGNAGE	1	L.S.
70.20	TACTILE WARNING SYSTEM CAST-IN-PLACE	32	S.F.
⑥ 72.10	TEMPORARY GUYING OF UTILITY POLES	1	EACH

UTILITIES

1. THE LOCATION OF UTILITIES SHOWN WITHIN THESE PLANS ARE APPROXIMATE ONLY. EXACT LOCATIONS WILL BE DETERMINED IN THE FIELD BY CONTACTING THE UTILITY COMPANIES INVOLVED.
2. UNLESS OTHERWISE NOTED, ALL UTILITY ADJUSTMENTS WILL BE PERFORMED BY THE UTILITY OR ITS REPRESENTATIVE. THE CONTRACTORS AND UTILITY OWNERS WILL BE REQUIRED TO COOPERATE WITH EACH OTHER IN ORDER TO EXPEDITE THE WORK REQUIRED BY THIS CONTRACT.
3. THE CONTRACTOR WILL PROVIDE ALL NECESSARY PROTECTIVE MEASURES TO SAFEGUARD EXISTING UTILITIES FROM DAMAGE DURING CONSTRUCTION OF THIS PROJECT. IN THE EVENT THAT SPECIAL EQUIPMENT IS REQUIRED TO WORK OVER AND AROUND THE UTILITIES, THE CONTRACTOR WILL BE REQUIRED TO FURNISH SUCH EQUIPMENT. THE COST OF PROTECTING UTILITIES FROM DAMAGE AND FURNISHING SPECIAL EQUIPMENT WILL BE INCLUDED IN THE PRICE BID FOR OTHER ITEMS OF CONSTRUCTION.
4. THE CONTRACTOR WILL BE SOLELY RESPONSIBLE FOR CONTACTING ALL AFFECTED UTILITIES PRIOR TO SUBMITTING HIS BID, IN ORDER TO DETERMINE THE EXTENT TO WHICH UTILITY RELOCATIONS AND / OR ADJUSTMENTS WILL HAVE UPON THE SCHEDULE OF THE WORK FOR THE PROJECT. SOME UTILITY FACILITIES MAY NEED TO BE ADJUSTED CONCURRENTLY WITH THE CONTRACTOR'S OPERATIONS, WHILE SOME WORK MAY BE REQUIRED AROUND UTILITY FACILITIES THAT WILL REMAIN IN PLACE. IT IS UNDERSTOOD AND AGREED THAT THE CONTRACTOR WILL RECEIVE NO ADDITIONAL COMPENSATION FOR ANY DELAYS OR INCONVENIENCE CAUSED BY THE UTILITY ADJUSTMENTS.
5. THE CONTRACTOR SHALL NOTIFY EACH INDIVIDUAL UTILITY OWNER OF HIS PLAN OF OPERATION IN THE AREA OF THE UTILITIES. PRIOR TO COMMENCING WORK, THE CONTRACTOR SHALL CONTACT THE UTILITY OWNERS AND REQUEST THEM TO PROPERLY LOCATE THEIR RESPECTIVE UTILITY ON THE GROUND. THIS NOTIFICATION SHALL BE GIVEN AT LEAST THREE (3) BUSINESS DAYS PRIOR TO COMMENCEMENT OF OPERATIONS AROUND THE UTILITY.
6. SOME UTILITIES CAN BE LOCATED BY CALLING THE TENNESSEE ONE CALL SYSTEM, INC. AT 1-800-351-1111.
7. ALL POWER, LIGHT AND COMMUNICATION LINES, POLES, WATER LINES, GAS LINES, SEWER LINES OR OTHER PUBLIC UTILITIES CONFLICTING WITH THE PROPOSED IMPROVEMENTS SHALL BE RESET OR ADJUSTED BY THEIR RESPECTIVE OWNERS AS FOLLOWS:
 - KNOXVILLE UTILITIES BOARD - ALL GAS, ELECTRIC, WATER, AND SANITARY SEWER LINES.
 - AT&T - ALL TELEPHONE LINES.
 - WOW! KNOXVILLE OR COMCAST - ALL CABLE TELEVISION

GRADING

- ADEQUATE EROSION AND SEDIMENT CONTROL MEASURES MUST BE MAINTAINED BY THE CONTRACTOR DURING CONSTRUCTION IN ACCORDANCE WITH THE PROVISIONS SPECIFIED IN THE CITY OF KNOXVILLE BMP MANUAL.
1. EXCAVATED MATERIAL IN EXCESS OF THAT REQUIRED FOR EMBANKMENT FILLING, OR UNSUITABLE FOR SUCH SHALL BE DISPOSED OF PROPERLY BY THE CONTRACTOR WITH THE SITE OF DISPOSAL BEING APPROVED BY THE ENGINEER. ALL APPLICABLE PERMITS FOR THE DISPOSAL OF MATERIAL SHALL BE OBTAINED BY THE CONTRACTOR.
 2. ALL EARTHEN AREAS EXPOSED BY CONSTRUCTION SHALL BE COVERED WITH 4 INCHES OF TOPSOIL AND SODDED. WORK SHALL BE DONE IN AN EXPEDIENT MANNER TO MINIMIZE TIME OF EXPOSURE TO WEATHER.
 3. ANY AREA THAT IS DISTURBED OUTSIDE THE LIMITS OF CONSTRUCTION DURING THE LIFE OF THIS PROJECT SHALL BE REPAIRED BY THE CONTRACTOR AT HIS EXPENSE.
 4. CONTRACTOR SHALL CLEAR ONLY AREAS TO BE EXCAVATED.
 5. ANY INCIDENTAL PAVEMENT REMOVAL REQUIRED WILL BE PAID FOR UNDER ITEM 4.20, COMMON EXCAVATION.

MAINTENANCE OF TRAFFIC

1. CONTRACTOR SHALL NOTIFY AFFECTED PROPERTY OWNERS PRIOR TO BEGINNING WORK.
2. ACCESS TO ALL PRIVATE DRIVES MUST BE MAINTAINED DURING CONSTRUCTION.
3. PEDESTRIAN ACCESS MUST BE MAINTAINED TO ALL ADJOINING PROPERTIES DURING CONSTRUCTION AND NON-CONSTRUCTION HOURS.
4. THE CONTRACTOR IS RESPONSIBLE FOR DESIGNATING A STAGING AREA WITH THE APPROVAL OF THE ENGINEER, LOCATED TO MINIMIZE IMPACT TO THE AREA. THE CONTRACTOR MUST IDENTIFY A PARKING AREA, WITH THE APPROVAL OF THE ENGINEER, FOR EMPLOYEE PARKING.
5. THE CONTRACTOR SHALL NOT OPERATE TRACK-DRIVEN EQUIPMENT ON THE ADJACENT LOCAL STREET SYSTEM AND IS DISCOURAGED FROM OPERATING RUBBER-TIRED CONSTRUCTION EQUIPMENT ON ADJACENT STREETS. IN THE EVENT THAT SUCH OPERATIONS BECOME NECESSARY, THEY MUST BE COORDINATED THROUGH THE ENGINEER.
6. THE CONTRACTOR WILL BE RESPONSIBLE FOR MAINTAINING NECESSARY TRAFFIC CONTROL. ALL SITUATIONS AND TRAFFIC SCHEMES SHALL BE IN ACCORDANCE WITH THE REQUIREMENTS OF THE STANDARD SPECIFICATIONS, SECTION 34.0 AND THE CURRENT EDITION OF THE MANUAL ON UNIFORM TRAFFIC CONTROL DEVICES FOR STREETS AND HIGHWAYS (MUTCD).

DRAINAGE

1. THE COST OF EXCAVATION AND BACKFILL FOR PIPE CULVERTS AND CATCH BASINS IS TO BE INCLUDED IN THE PRICE BID FOR THE RESPECTIVE STRUCTURE.
2. WHERE A PIPE CULVERT OR CATCH BASIN IS MOVED TO A NEW LOCATION FROM THAT SHOWN ON THE PLANS, THUS INCREASING OR DECREASING THE AMOUNT OF EXCAVATION, NO INCREASE OR DECREASE OF PAYMENT SHALL BE MADE FOR SUCH CHANGE.
3. ALL PIPE CULVERTS SHALL BE INSTALLED WITH A MINIMUM CLASS "B" BEDDING WITH A MINERAL AGGREGATE BASE FOUNDATION MEETING THE REQUIREMENTS OF SECTION 5.0 OF THE CITY OF KNOXVILLE SPECIFICATIONS. ALL PIPE CULVERTS UNDER ROADWAYS, CURBS, GUTTERS, OR SIDEWALK SHALL BE BACKFILLED WITH MINERAL AGGREGATE BASE.

- ① Items to be removed are indicated on Sheet Nos. 8, 9, 10, 11, and 13.
- ② Includes aggregate base within roadway repairs and under asphalt driveways.
- ③ To be used at driveways to provide access during construction.
- ④ To include the cost of curb ramps at roadway intersections.
- ⑤ To include the cost of steps with handrail at Sta. 59+12.36.

- ⑥ When excavation must occur near a utility pole, the contractor shall employ a licensed electrical contractor to guy, anchor, brace, mechanically hold, etc., the pole throughout the excavation process and until the area can be properly backfilled and compacted to prevent the movement of the pole. If the excavation affects an anchor, the pole will need to be stabilized in a similar manner until the anchor can be reinstalled in the exact location. Contractor shall notify the utility pole owner not less than seven (7) calendar days prior to excavation within twenty (20) feet of any pole and shall provide information to the utility pole owner pertaining to the method that is to be used to stabilize the pole, as well as the name of the electrical contractor responsible for the portion of the work.



CITY OF KNOXVILLE
DEPARTMENT OF ENGINEERING

**ESTIMATED QUANTITIES
AND GENERAL NOTES**

PALMETTO ROAD PHASE 2 AND
SULLIVAN ROAD SIDEWALK PROJECT

DRAWN: R.W.
DESIGNED: K.M.
DATE: 10-15-2021
CHECKED: R.T.
APPROVED: T.C.

P:\42730_Palmetto Road_Sidewalk - Phase 2\Cadwork\Sheet's\02_Quantities_Quantity\18C-S-0664.dwg - 22-OCT-2021 10:56:11 AM - J.Carter

PROJECT No. 18C-S-0664		YEAR 2021	SHEET No. 4
REVISIONS			
No.	DATE	BY	BRIEF DESCRIPTION
1	10-22-2021	JC	Revised Str. 5, 8, 11 and clarified COK - 1 Reference

DRAINAGE STRUCTURES

STR No.	STATION	BASELINE	OFFSET	TYPE	TOP ELEV. ^①	INVERT ELEV.	DEPTH ^②	STANDARD DRAWING
1	50+60.73	SULLIVANLT	24.41' RT	Flared End Section	N/A	992.77		COK-3
2	50+66.22	SULLIVANLT	9.22' LT	Area Drain	995.56	993.06	2.50	COK-1, TYPE B GRATE
3	54+23.80	SULLIVANLT	7.00' LT	Area Drain	997.72	995.01	2.71	COK-1, TYPE B GRATE
4	54+94.60	SULLIVANLT	12.50' LT	No. 3 MH, 48" Dia.	998.75	994.02	4.73	D-MH-2
5	55+16.93	SULLIVANLT	7.00' LT	Area Drain	996.95	993.69	3.26	COK-1, TYPE C GRATE
6	55+82.30	SULLIVANLT	7.00' LT	Area Drain	995.48	992.00	3.48	D-CB-42S
7	55+76.25	SULLIVANLT	18.72' RT	Flared End Section	N/A	991.12		COK-3
8	56+36.53	SULLIVANLT	7.00' LT	Area Drain	995.80	992.62	3.18	COK-1, TYPE C GRATE
11	56+89.90	SULLIVANLT	7.00' LT	Area Drain	995.98	993.27	2.71	COK-1, TYPE C GRATE
12	57+02.53	SULLIVANLT	25.74' LT	Area Drain	999.27	993.50	5.77	COK-1, TYPE B GRATE
13	58+20.06	SULLIVANLT	7.00' LT	Area Drain	995.99	993.49	2.50	COK-1, TYPE B GRATE
14	57+64.97	SULLIVANLT	23.07' RT	Flared End Section	N/A	992.26		COK-3
15	58+01.07	SULLIVANLT	25.49' RT	Flared End Section	N/A	992.53		COK-3
16	58+87.38	SULLIVANLT	21.92' RT	Ex. CB	997.52	994.12	3.40	
17	59+08.83	SULLIVANLT	7.00' LT	Area Drain	997.32	994.61	2.71	COK-1, TYPE B GRATE
18	55+94.58	SULLIVANLT	28.11' RT	Headwall	994.28	990.82	3.46	COK-3
19	56+80.42	SULLIVANLT	28.24' RT	Headwall	995.23	991.77	3.46	COK-3
20	14+16.38	PALM2BL CH1	0.50' RT	No. 12 CB, Brick	1018.19	1013.30	4.89	D-CB-12LP
21	13+15.63	PALM2BL CH1	0.50' RT	No. 12 CB	1017.56	1014.04	3.52	D-CB-12LP

PIPE CULVERTS

TO					FROM					CONCRETE PIPE (CLASS III) L.F.					
STR.	STA.	BASELINE	OFFSET	INV. ELEV.	STR.	STA.	BASELINE	OFFSET	INV. ELEV.	GRADE (%)	15"	18"	24"	38" x 24"	45" x 29"
1	50+60.73	SULLIVANLT	24.41' RT	992.77	2	50+66.22	SULLIVANLT	9.22' LT	993.06	0.85%	34				
4	54+94.60	SULLIVANLT	12.50' LT	994.02	3	54+23.80	SULLIVANLT	7.00' LT	995.01	1.36%		73			
5	55+16.93	SULLIVANLT	7.00' LT	993.69	4	54+94.60	SULLIVANLT	12.50' LT	994.02	1.38%		24			
6	55+82.30	SULLIVANLT	7.00' LT	992.00	5	55+16.93	SULLIVANLT	7.00' LT	993.69	2.56%		66			
7	55+76.25	SULLIVANLT	18.72' RT	991.12	6	55+82.30	SULLIVANLT	7.00' LT	992.00	3.38%			26		
6	55+82.30	SULLIVANLT	7.00' LT	992.00	8	56+36.53	SULLIVANLT	7.00' LT	992.62	1.15%		54			
8	56+36.53	SULLIVANLT	7.00' LT	992.62	11	56+89.90	SULLIVANLT	7.00' LT	993.27	1.23%		53			
11	56+89.90	SULLIVANLT	7.00' LT	993.27	12	57+02.53	SULLIVANLT	25.74' LT	993.50	1.00%		23			
14	57+64.97	SULLIVANLT	23.07' RT	992.26	13	58+20.06	SULLIVANLT	7.00' LT	993.49	1.95%	63				
15	58+01.07	SULLIVANLT	25.49' RT	992.53	16	58+87.38	SULLIVANLT	21.92' RT	994.12	1.79%				89	
13	58+20.06	SULLIVANLT	7.00' LT	993.49	17	59+08.83	SULLIVANLT	7.00' LT	994.61	1.30%	86				
18	55+94.58	SULLIVANLT	28.11' RT	990.82	19	56+80.42	SULLIVANLT	28.24' RT	991.77	1.10%					86
20	14+16.38	PALM2BL CH1	0.50' RT	1013.30	21	13+15.63	PALM2BL CH1	0.50' RT	1014.04	0.73%	101				
TOTALS											284	293	26	89	86

① INDICATES TOP OF GRATE FOR CATCH BASINS AND CENTER OF MANHOLE LID FOR PROPOSED MANHOLES.

② DEPTHS INDICATED ARE FROM THE TOP OF THE STRUCTURE TO THE INVERT OF THE LOWEST PIPE.

SPECIAL DITCHES

TO				FROM					SPECIAL DITCH L.F.	COMMENTS
STA.	BASELINE	OFFSET	INV. ELEV.	STA.	BASELINE	OFFSET	INV. ELEV.	GRADE (%)		
55+68.29	SULLIVANLT	26.09' RT	990.65	55+75.00	SULLIVANLT	29.52' RT	990.70	0.66%	7.54	Trapezoidal Rip Rap
55+75.00	SULLIVANLT	29.52' RT	990.70	55+90.00	SULLIVANLT	28.10' RT	990.82	0.80%	15.07	
55+93.82	SULLIVANLT	24.23' RT	993.80	56+05.00	SULLIVANLT	23.52' RT	993.92	1.07%	11.20	Sod Swale
56+05.00	SULLIVANLT	23.52' RT	993.92	56+20.00	SULLIVANLT	23.26' RT	994.11	1.27%	15.00	
56+20.00	SULLIVANLT	23.26' RT	994.11	56+27.50	SULLIVANLT	27.27' RT	994.45	4.00%	8.50	
56+39.88	SULLIVANLT	28.86' RT	994.62	56+45.00	SULLIVANLT	25.93' RT	994.69	1.35%	5.20	Sod Swale
56+45.00	SULLIVANLT	25.93' RT	994.69	56+80.00	SULLIVANLT	26.21' RT	995.16	1.34%	35.00	
56+85.00	SULLIVANLT	28.25' RT	991.77	57+00.00	SULLIVANLT	28.39' RT	991.86	0.60%	15.00	Trapezoidal Rip Rap
57+00.00	SULLIVANLT	28.39' RT	991.86	57+25.00	SULLIVANLT	27.96' RT	992.01	0.61%	24.61	
57+25.00	SULLIVANLT	27.96' RT	992.01	57+50.00	SULLIVANLT	27.40' RT	992.10	0.36%	25.01	
57+50.00	SULLIVANLT	27.40' RT	992.10	57+63.11	SULLIVANLT	27.20' RT	992.14	0.31%	13.11	
57+63.11	SULLIVANLT	27.20' RT	992.14	57+75.00	SULLIVANLT	26.81' RT	992.26	1.01%	11.90	
57+75.00	SULLIVANLT	26.81' RT	992.26	57+94.95	SULLIVANLT	25.81' RT	992.42	0.80%	19.98	
TOTALS									207.12	



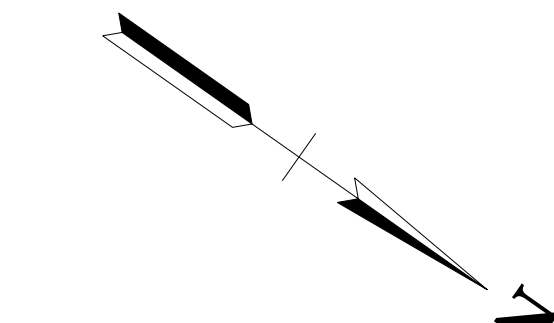
CITY OF KNOXVILLE
DEPARTMENT OF ENGINEERING

**DRAINAGE STRUCTURES
AND QUANTITIES**

PALMETTO ROAD PHASE 2 AND
SULLIVAN ROAD SIDEWALK PROJECT

DRAWN: JC
DESIGNED: KM
DATE: 10-15-2021
CHECKED: RT
APPROVED: TC

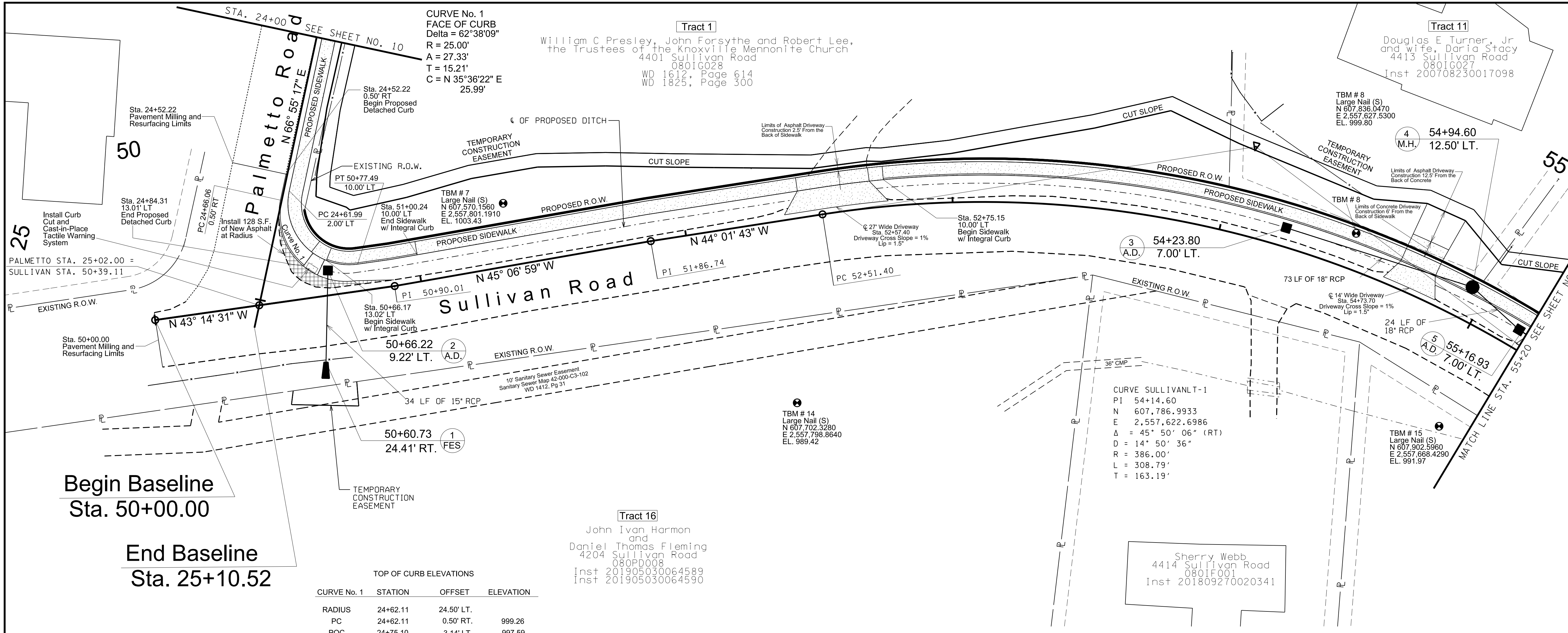
PROJECT No.	YEAR	SHEET No.	
18C-S-0664	2021	12	
REVISIONS			
No.	DATE	BY	BRIEF DESCRIPTION
1	10-22-2021	JC	Revised Structure 5



GRID NORTH OF THE TENNESSEE COORDINATE SYSTEM - NAD83 (NRSR2011) BASED ON A BEARING OF N 58° 18' 48" W FROM CITY OF KNOXVILLE SURVEY CONTROL STATION No. 0801 TO STATION No. 0800

Distances have not been reduced to grid distances.

NOTE:
The Contractor shall install City of Knoxville BMP ES-14 Silt Fence at all Fill Slopes and ES-24 Temporary Inlet Protection at all Drainage Inlets.

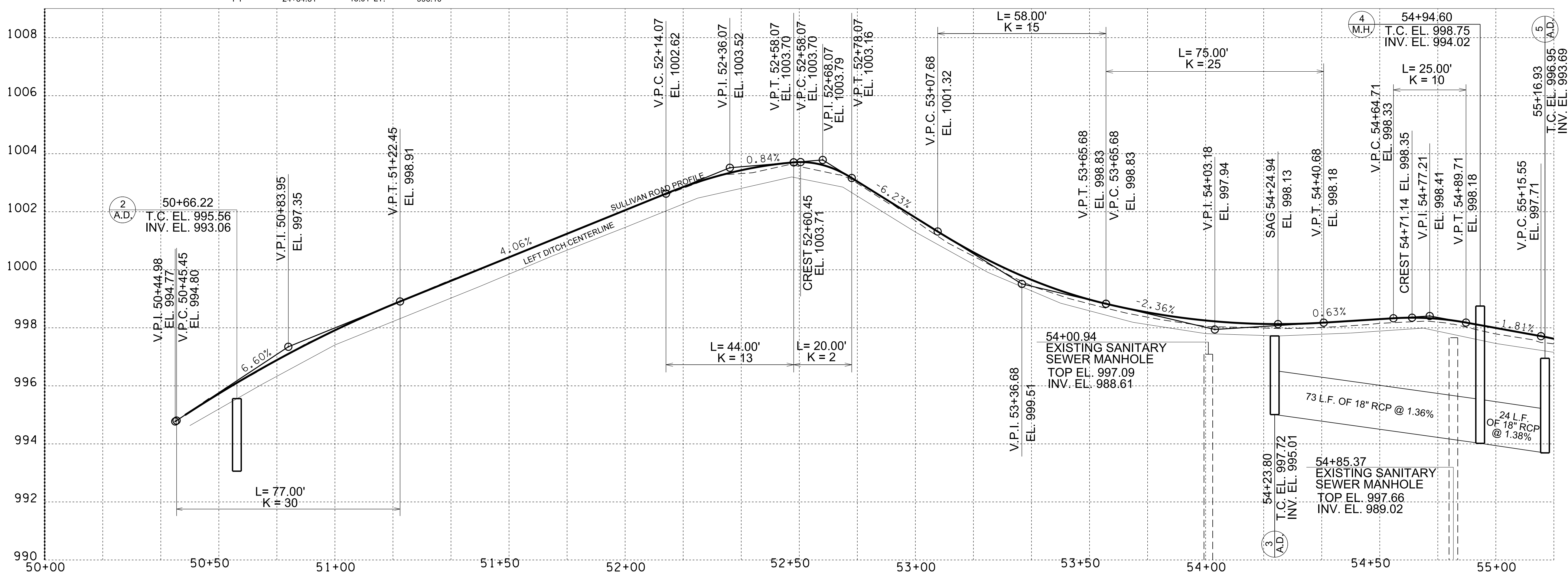


Begin Baseline
Sta. 50+00.00

End Baseline
Sta. 25+10.52

TOP OF CURB ELEVATIONS

CURVE No. 1	STATION	OFFSET	ELEVATION
RADIUS	24+62.11	24.50' LT.	999.26
PC	24+62.11	0.50' RT.	997.59
POC	24+75.10	3.14' LT.	996.10
PT	24+84.31	13.01' LT.	996.10



CITY OF KNOXVILLE
DEPARTMENT OF ENGINEERING

PROPOSED LAYOUT

PALMETTO ROAD PHASE 2 AND SULLIVAN ROAD SIDEWALK PROJECT
STA. 50+00.00 TO STA. 55+20.00

SCALE: 1"=20' Horizontal and 2' Vertical

DRAWN: JC
DESIGNED: KM
DATE: 10-15-2021
CHECKED: RT
APPROVED: TC

P:\142730_Palmetto Road Sidewalk - Phase 2\Geopak\Sheets\Sullivan\004\sh1-Default-JC.rvt 22-OCT-2021 10:25:00 AM T:\Bibles\750_black.pcn

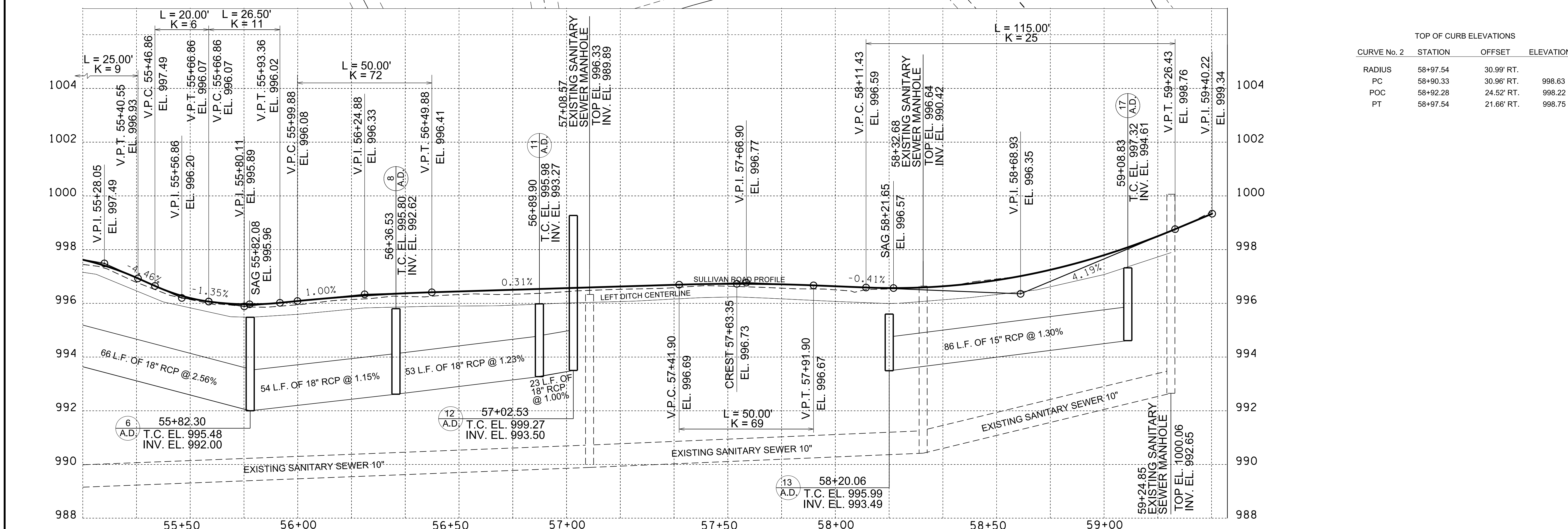
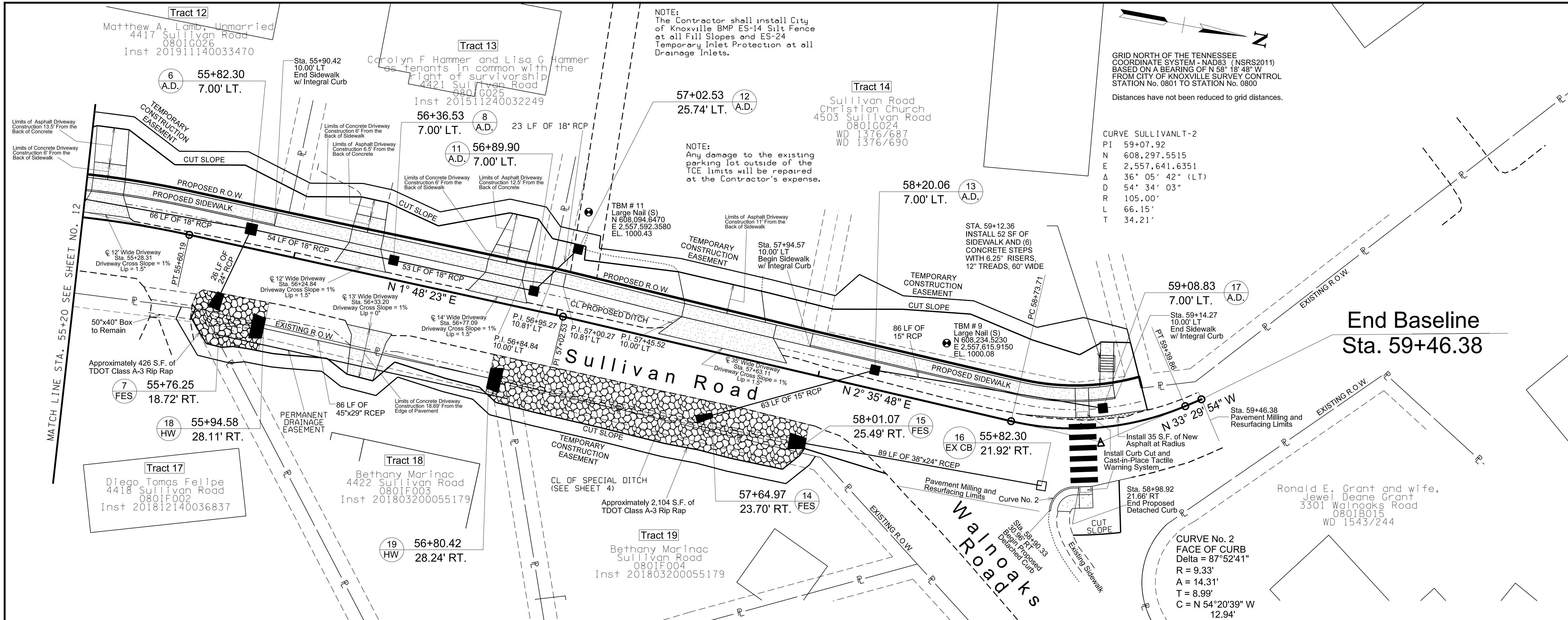
PROJECT No.	YEAR	SHEET No.	
18C-S-0664	2021	14	
REVISIONS			
No.	DATE	BY	BRIEF DESCRIPTION
1	10-22-2021	JC	Revised Structure 8 and 11

GRID NORTH OF THE TENNESSEE COORDINATE SYSTEM - NAD83 (NSRS2011) BASED ON A BEARING OF N 58° 18' 48" W FROM CITY OF KNOXVILLE SURVEY CONTROL STATION No. 0801 TO STATION No. 0800

Distances have not been reduced to grid distances.

CURVE SULLIVANLT-2
 P1 59+07.92
 N 608,297.5515
 E 2,557,641.6351
 Δ 36° 05' 42" (LT)
 D 54' 34" 03"
 R 105.00'
 L 66.15'
 T 34.21'

CURVE No. 2
 FACE OF CURB
 Delta = 87°52'41"
 R = 9.33'
 A = 14.31'
 T = 8.99'
 C = N 54°20'39" W
 12.94'



TOP OF CURB ELEVATIONS			
CURVE No. 2	STATION	OFFSET	ELEVATION
RADIUS	58+97.54	30.99' RT.	998.63
PC	58+90.33	30.96' RT.	998.63
POC	58+92.28	24.52' RT.	998.22
PT	58+97.54	21.66' RT.	998.75



CITY OF KNOXVILLE
 DEPARTMENT OF ENGINEERING

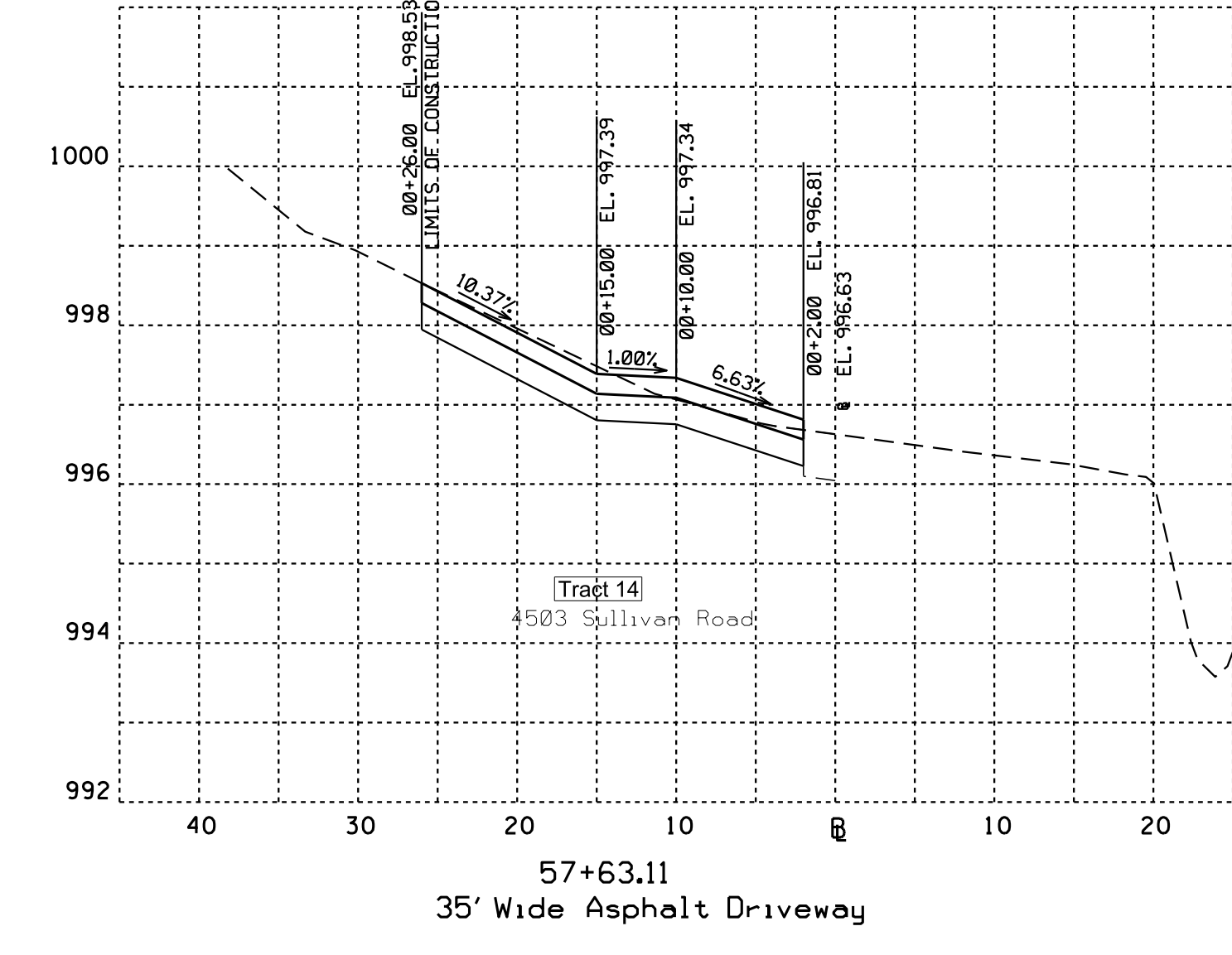
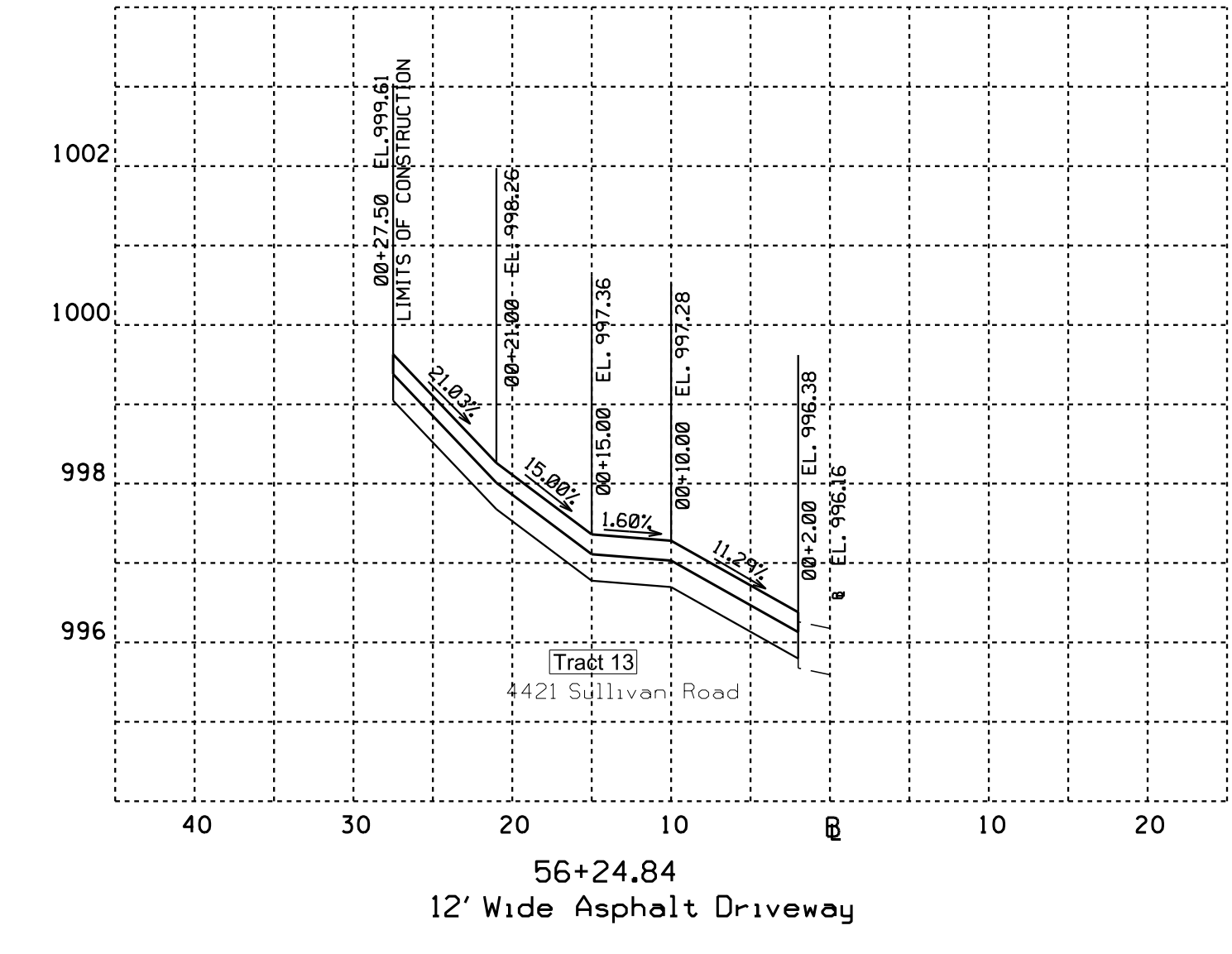
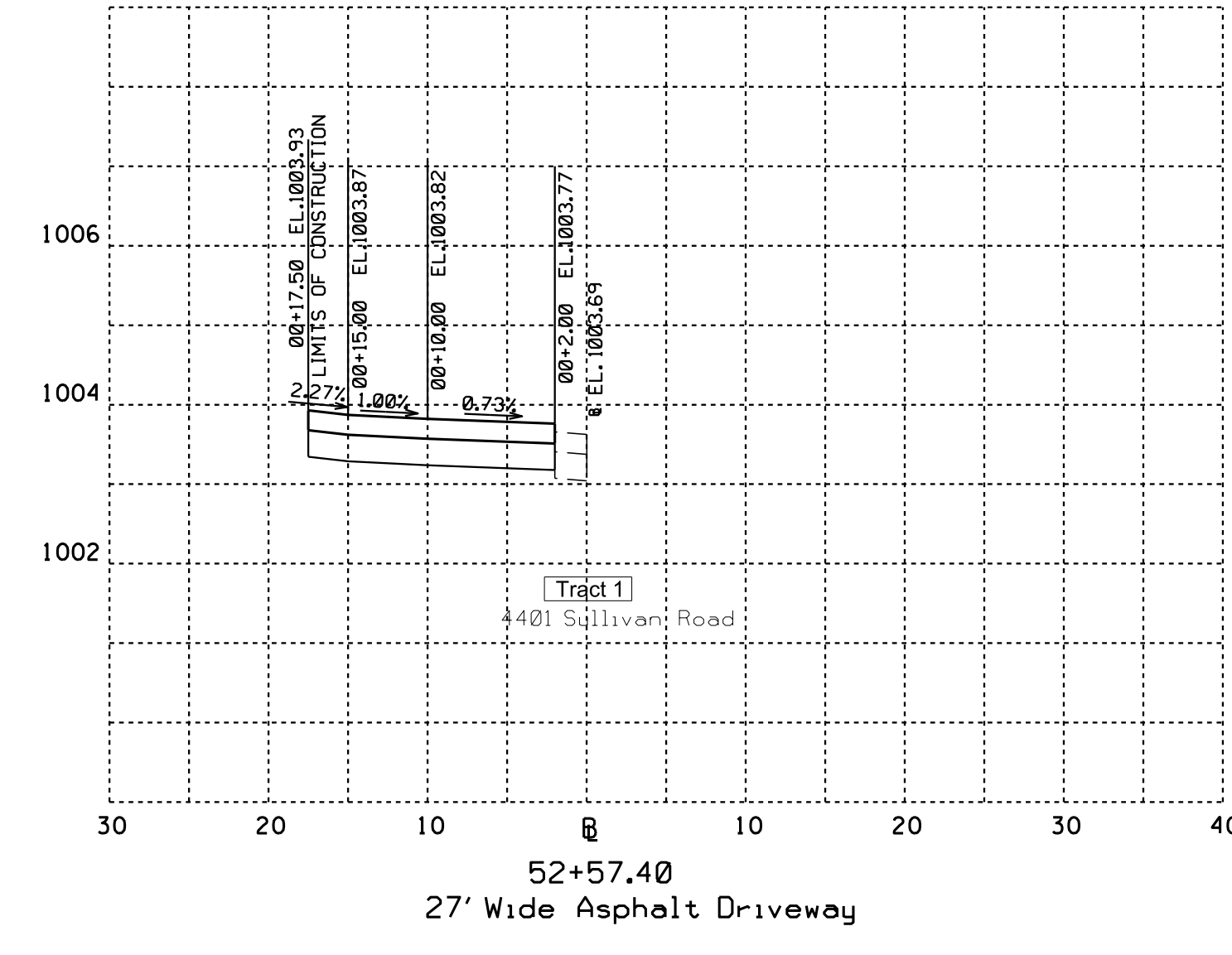
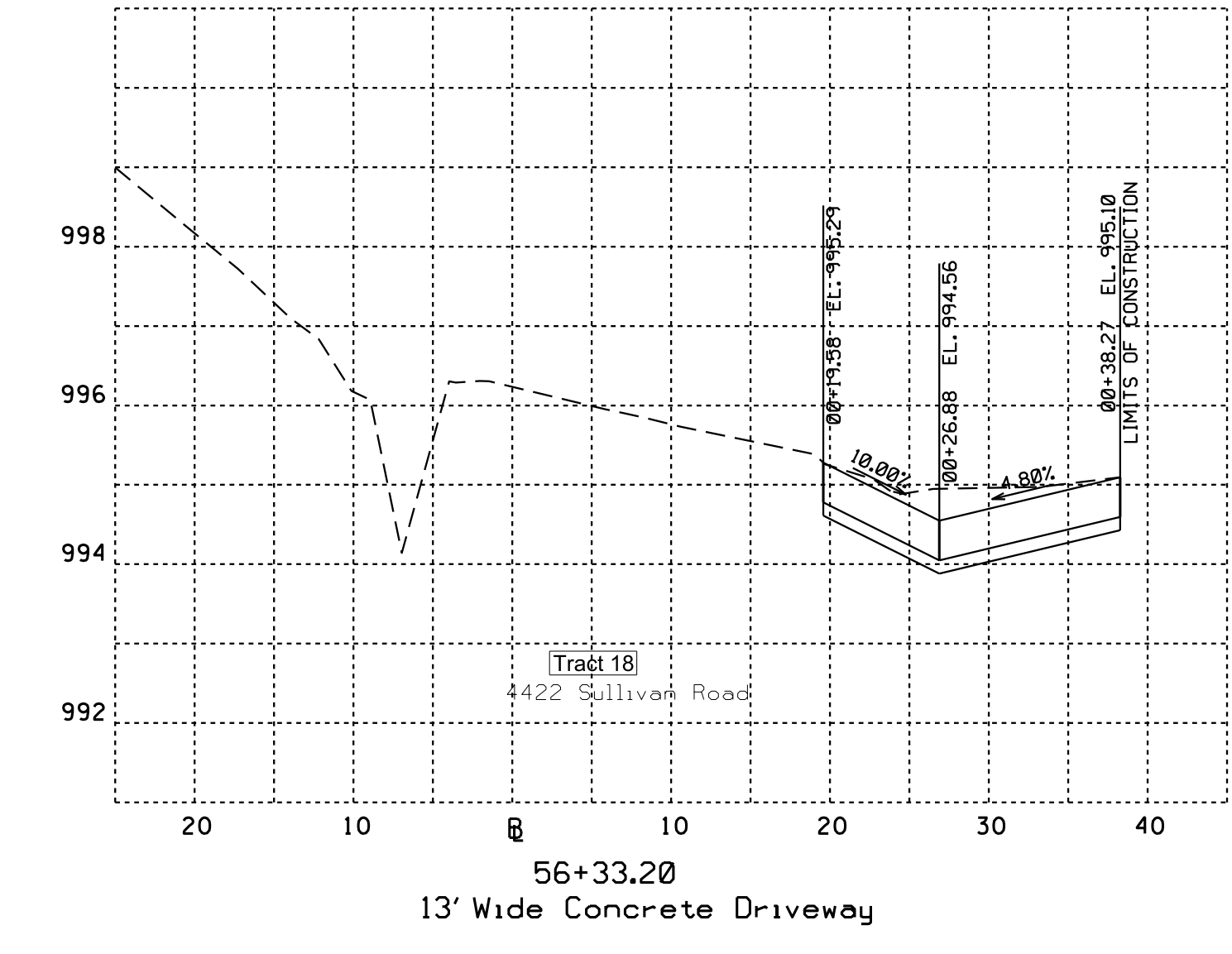
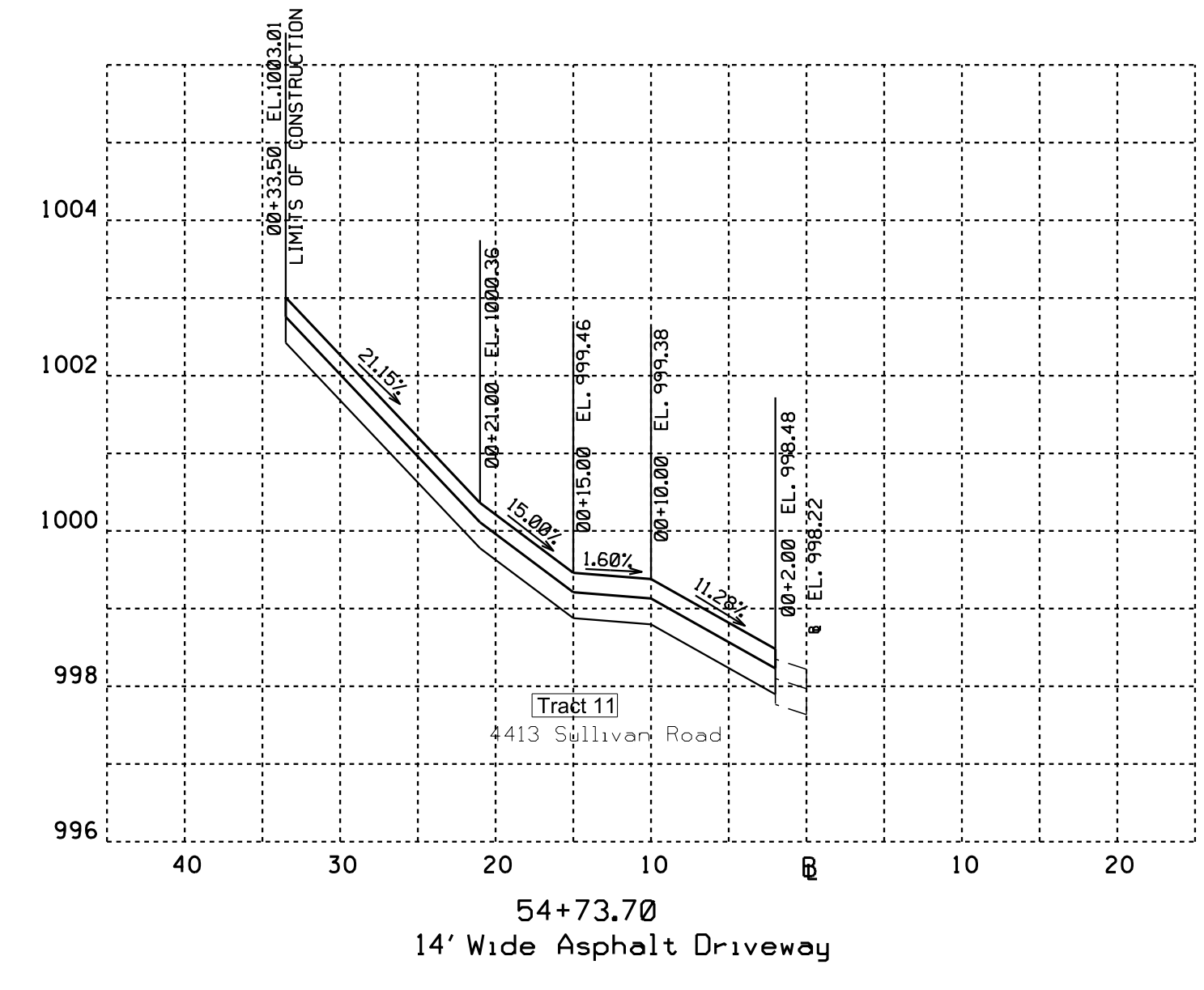
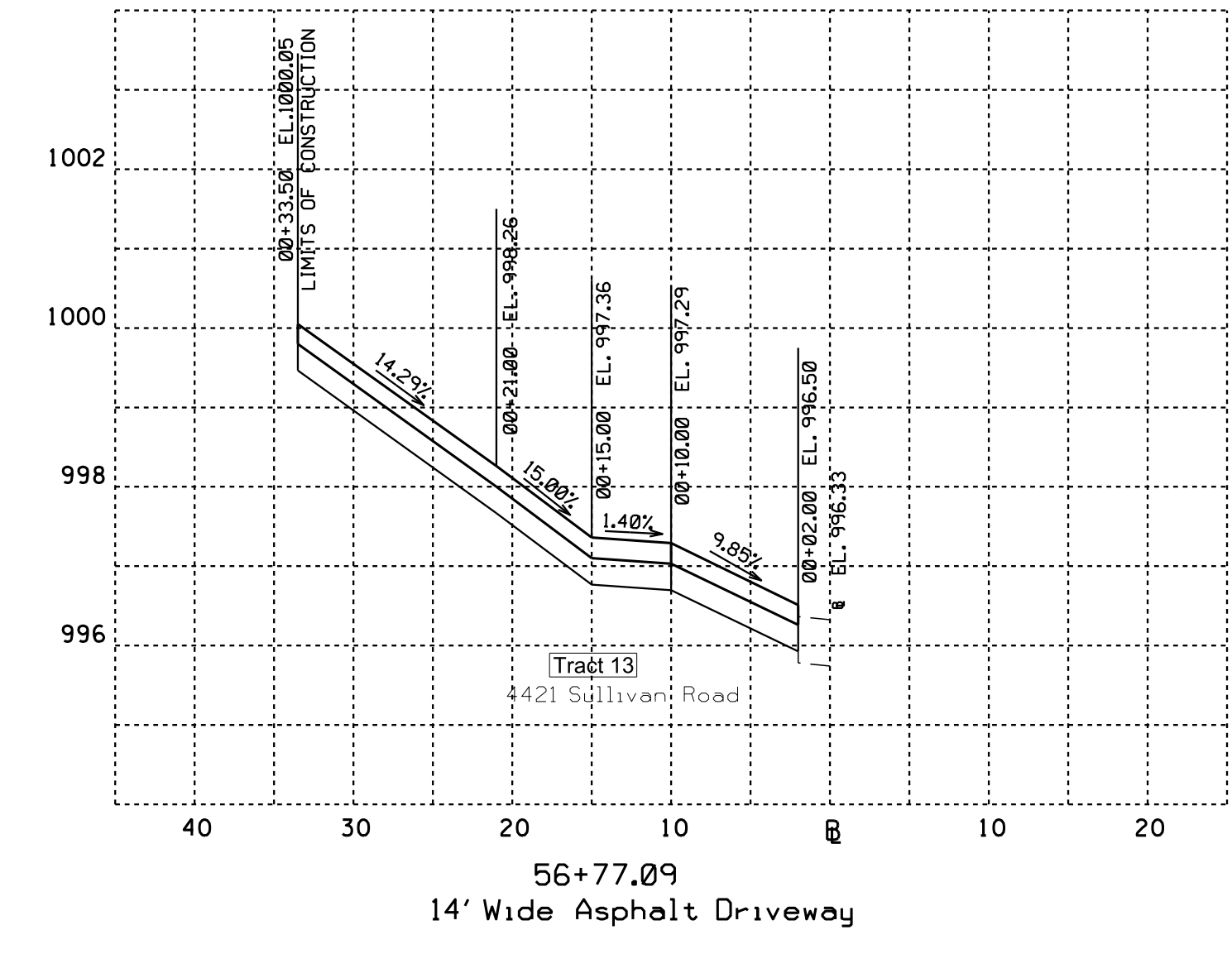
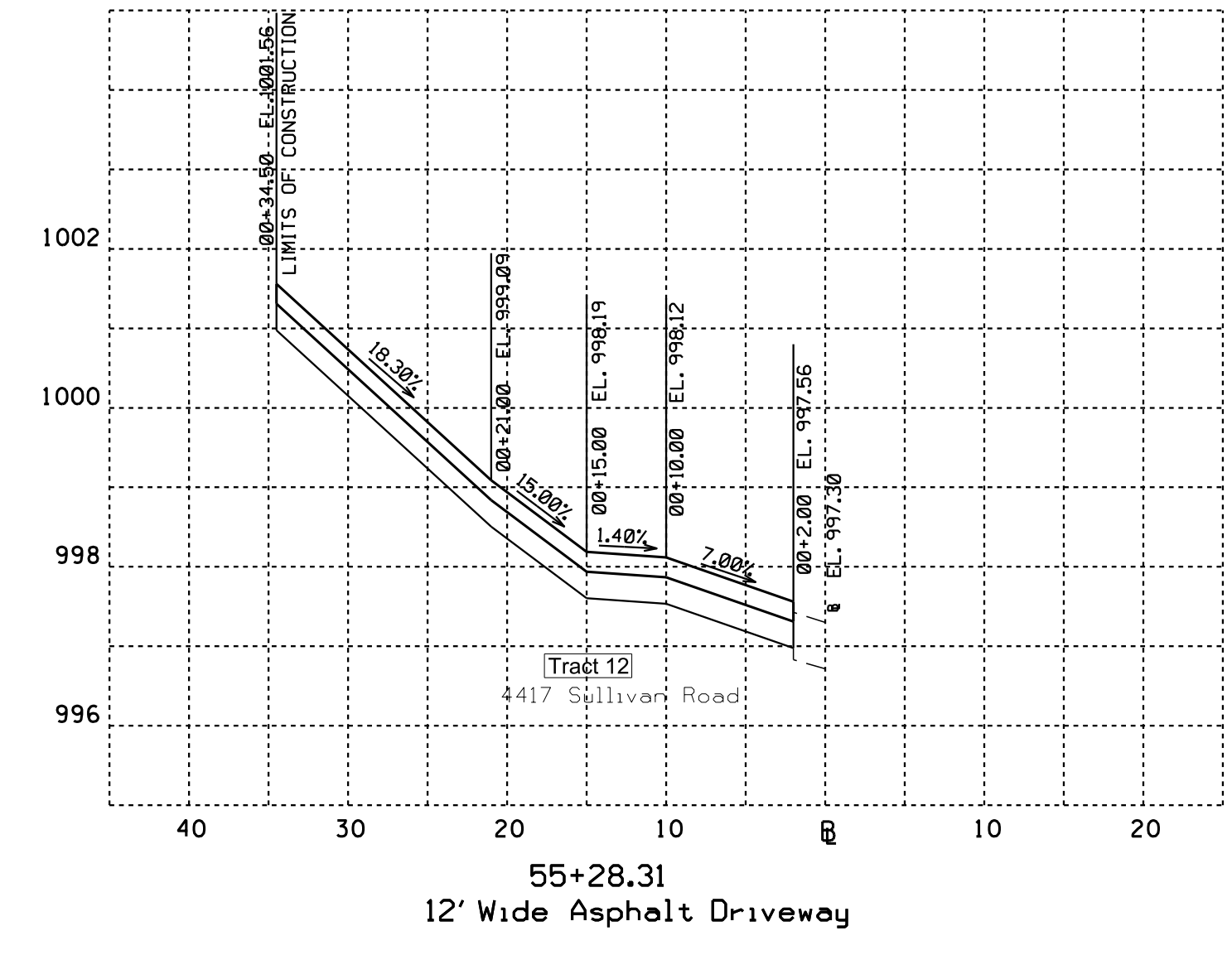
PROPOSED LAYOUT

PALMETTO ROAD PHASE 2 AND SULLIVAN ROAD SIDEWALK PROJECT
 STA. 55+20.00 TO STA. 59+46.38
 SCALE: 1"=20' Horizontal and 2' Vertical

DRAWN: JC
 DESIGNED: KM
 DATE: 10-15-2021
 CHECKED: RT
 APPROVED: TC

P:\42730_Palmetto Road_Sidewalk - Phase 2\Geopak\Sheets\Sullivan\005.sht-Default - JCorr.rvt 22-OCT-2021 10:58:10 AM T:\Bobbie\750_black.pcn

PROJECT No. 18C-S-0664	YEAR 2021	SHEET No. 26	
REVISIONS			
No.	DATE	BY	BRIEF DESCRIPTION
1	10-22-21	K.M.	Changed starting offset from 4' LT. to 2' LT.



CITY OF KNOXVILLE
DEPARTMENT OF ENGINEERING

DRIVEWAY PROFILES

PALMETTO ROAD PHASE 2 AND
SULLIVAN ROAD SIDEWALK PROJECT
STA. 52+57.40 TO STA. 57+63.11
SCALE: 1"=10' Horizontal
1"= 2' Vertical

DRAWN: JC
DESIGNED: KM
DATE: 10-15-2021
CHECKED: RT
APPROVED: TC

P:\42730_Palmetto Road Sidewalk - Phase 2\Geopak\Sheets\Sullivan\Driveway CrossSections\Sheet.dgn - Design - RRebb 22-OCT-2021 09:48:11 - Tables\750_block.dgn