



Date: Feb 18, 2020

The Schneider Company
39A Pelham Davis Circle
Greenville SC 29615
Phone: (864) 675-9250
Fax: (864) 675-9640

Job Name
LAKWOOD ELEMENTARY SCHOOL CANOPY PROJECT
TSC20-43231
1675 HWY 396, MYRTLE BEACH SC

Bid Date
Mar 11, 2020

Submittal Date
Feb 18, 2020

Institution:
HORRY COUNTY SCHOOLS
335 FOUR MILE RD
Conway SC 29528



Transmittal

The Schneider Company
 39A Pelham Davis Circle
 Greenville SC 29615
 Phone: (864) 675-9250
From: Debbie Parham

Project **LAKESWOOD ELEMENTARY SCHOOL
 CANOPY PROJECT**

Quote# TSC20-43231

Location 1675 HWY 396, MYRTLE BEACH SC

To HORRY COUNTY SCHOOLS

335 FOUR MILE RD

Conway SC 29528

Contact: MAURICE JACKSON

ATTACHED WE ARE SENDING YOU 1 COPY OF THE FOLLOWING ITEM:

- | | | |
|-----------------------------------|--|--------|
| <input type="checkbox"/> Drawings | <input type="checkbox"/> Specifications | Other: |
| <input type="checkbox"/> Prints | <input type="checkbox"/> Information | |
| <input type="checkbox"/> Plans | <input checked="" type="checkbox"/> Submittals | |

THESE ARE TRANSMITTED FOR:

- | | | |
|--|---|---------------------------------|
| <input checked="" type="checkbox"/> Prior Approval | <input type="checkbox"/> Resubmittal for Approval | <input type="checkbox"/> Record |
| <input type="checkbox"/> Approval | <input type="checkbox"/> Corrections | Bids due on: |
| <input type="checkbox"/> Approval as Submitted | <input type="checkbox"/> Your Use | Other: |
| <input type="checkbox"/> Approval as Noted | <input type="checkbox"/> Review and Comment | |

Type

CANOPY

MFG

KENALL

Part

[MLHA5-48-R-CC\(DARK BRONZE\)-PP-
45L40K-DCC-DV](#)



Feb 18, 2020

MAURICE JACKSON
HORRY COUNTY SCHOOLS
335 FOUR MILE RD
Conway SC 29528

RE: LAKEWOOD ELEMENTARY SCHOOL CANOPY PROJECT
1675 HWY 396, MYRTLE BEACH SC

Dear MAURICE

Type	MFG	Part
CANOPY	KENALL	MLHA5-48-R-CC(DARK BRONZE)-PP-45L40K-DCC-DV



Job Name:
LAKEWOOD ELEMENTARY SCHOOL CANOPY
PROJECT
Institution: Horry County Schools (Conway)

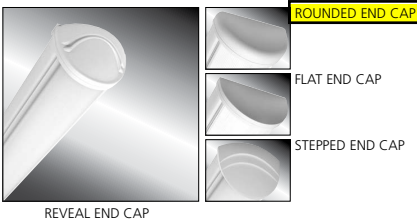
Catalog Number:
MLHA5-48-R-CC(DARK BRONZE)-
PP-45L40K-DCC-DV
Notes:

Type:
CANOPY
TSC20-43231

MILLENIUM STRETCH™
MLHA5 SERIES – INDIVIDUAL

Product Features:

- » Surface mount – ceiling, wall; 5"×24", 36", 48", 72" and 96"
- » Extruded aluminum housing with decorative end caps
- » Low-profile –ADA compliant
- » Peace of Mind Guarantee® against breakage



PROJECT INFORMATION

Job Name _____

Fixture Type _____

Catalog Number _____

Approved by _____

SPECIFICATIONS:

HOUSING: Marine grade aluminum. Extruded body with die-cast end caps. Housing, with end caps, post assembly TGIC polyester powder coat finished – 5-step pre-treatment. See Ordering Information for standard, optional and custom finishes.

REFLECTOR: Full reflector/wire cover – 92% reflectivity.

LENS: UV-stabilized, high impact extruded clear or pearlescent polycarbonate. Smooth exterior, linear prismatic interior. Nominal thickness .156". Lens securely positioned in body channels and end caps. Lens locked in place with tamper-resistant stainless steel Torx® with center pin fasteners and sealed with closed cell gaskets.

END CAPS: Marine grade die-cast aluminum. Four styles available: Flat, Rounded, Reveal and Stepped. Conduit and "Wire mold" ready" knockout visible only from interior of end cap (For Flat and Rounded styles only).

SOCKETS: Shock-resistant sockets with internal locking collar to ensure positive lamp retention.

HARDWARE: Stainless steel, tamper-resistant Torx® with center pin fasteners secure lens in housing body's lens channel (eight on 72" and 96" housings, four on 24", 36" and 48" housings).

ELECTRICAL: LED: Available 3500K, 4000K and 5000K color temperatures, 82 CRI. 120-277VAC and 347VAC, 50/60Hz electrical input with serviceable high power factor electronic, constant-current driver (<20% THD, >0.95 PF). Standard 0-10V dimming with 1-100% range and dim-to-dark capabilities; maximum driver source of 165µA. Optional embedded microwave motion sensor (MS) has factory default settings of 20 minute time out, dims down to 30%. **LF:** Class P ballasts. Fluorescent electronic 120/277/347 and dual voltage ballasts high power factor.

TEKLINK™ TL50: An independent lighting control system embedded in the luminaire, featuring its own occupancy sensor, daylight harvesting and adjustable time-out/dimming settings.

TEKLINK™ TL100: Centralized, wired zonal occupancy and closed-loop daylight harvesting control system. TL100 controllers are standalone devices and ordered separately for luminaire. [Click here for specifications.](#)

INSTALLATION: Standard two-point (24" housing), four-point (36" and 48" housing) and eight-point (72" and 96" housing) mounting required for Peace of Mind Guarantee®. LED product ambient temperature is -30°C to 40°C, unless otherwise noted.

PHOTOMETRICS: Photometry tested to the IESNA LM-79-08 standard by an ILAC/ISO17025 accredited laboratory. For additional photometric data, please go to www.kenall.com.

WARRANTY: Limited ten (10) year warranty for LED Lamps.

LISTINGS: Luminaire is certified to UL Standards by Intertek Testing Laboratory for Wet Location – covered ceiling mount. Corner, horizontal wall, vertical wall and pendant mount installation – Damp Location only. ETL certified IP64 in compliance with IEC 60598 – ceiling mount. ADA compliant.



In Stock SKU	
MLHA5-48-F-MW-PP-45L40K-DCC-1-DV	
MLHA5-48-R-MW-PP-45L40K-DCC-1-DV	

ORDERING INFORMATION (Ex: MLHA5-48-F-MB-PP-45L40K-DCC-DV-FS)

Model	Length	End Cap	Finish	Lens	Lamp Qty	Lamp Type	Ballast/Driver	Circuit Qty	Voltage	Options	Accessories	TekLink	Controls Kit
MLHA5													
Length													
24	2'												
36	3'												
48	4'												
72	Two 3' (factory connected)												
96	Two 4' (factory connected)												
End Caps													
F	Flat												
R	Rounded												
RV	Reveal												
SP	Stepped												
Finish													
LG	Light Gray												
MB	Matte Black												
MW	Matte White												
CC	Custom Color (Consult Factory)												
	DARK BRONZE												
Lens													
CP‡	Clear Polycarbonate												
PP	Pearlescent Polycarbonate												
Lamp Quantity (Cross Section):													
1	One												
2	Two												
Lamp Type													
25L35K	25 Watt 3500K LED												
25L40K	25 Watt 4000K LED												
25L50K	25 Watt 5000K LED												
14	F14T5												
17	F17T8												
24	F24T5HO (120/277V only)												
3' Lengths													
21	F21T5												
25	F25T8												
39	F39T5HO (120/277V only)												
4' Lengths													
45L35K	45 Watt 3500K LED												
45L40K	45 Watt 4000K LED												
45L50K	45 Watt 5000K LED												
28	F28T5												
32	F32T8												
54	F54T5HO												
54A	F54T5HO amalgam												
Circuit Quantity‡													
1	One												
2†	Two												
Voltage													
120	120 Volts												
277	277 Volts												
347†	347 Volts												
DV	120-277 Volts												
Options													
EL‡	500 Minimum Lumen Battery Pack (4' only) (90 Minutes; 32°F Starting Temperature)												
PEL‡	1100 Minimum Lumen Battery Pack 90 Minutes; 32°F Starting Temperature												
LEL	Integral 8.4W Emergency Battery Backup (4' length only, 0°C minimum operating temperature, n/a with 347V)												
CDF	Captive Diffuser Fasteners												
DL	Damp Location												
FS	Single Fuse & Holder												
NAT	Natorium Environment Option												
PH	Phillips Head Fasteners												
PM‡	Pendant Mount (stems by others; damp only)												
MS	Motion Sensor (2' and 4' LED only) (n/a with 347 Voltage Option)												
Accessories													
CMB‡	Corner Mount Bracket (Must be ordered with DL Option)												
9500	Torx® Screwdriver												
D-0552	Torx® Driver Bit (Required for CMB Option)												
TekLink													
TL50*	TL50 Control System (Click here for specifications)												
TL100	TL100 Control System (Click here for specifications)												
Please consult Kenall Applications when ordering controls. Mounting heights above 14' may require alternate sensing technology.													
Controls Kit													
<	>	Factory Assigned Internal Code											
†	n/a on 2' fixtures with EL option.												
‡	347V n/a with EL or PEL options.												
▪	2' Fixtures have minimum 350-450 lumen battery pack. n/a with (2) T5HO lamps.												
•	n/a on 2' fixtures, 3' fixtures with T5 or T8 lamping, or with (2) T5HO lamps.												
‡	n/a with LED												
§	PM and CMB not available in conjunction												
▲	LED only. N/A with with PM or CMB options. N/A with 72" or 96" length.												



www.kenall.com | P: 800-4-Kenall | F: 262-891-9701 | 10200 55th Street Kenosha, Wisconsin 53144, USA

A brand of **Legrand**

This product complies with the Buy American Act, manufactured in the United States with more than 50% of the component cost of US origin. It may be covered by patents found at www.kenall.com/patents. Content of specification sheets is subject to change; please consult www.kenall.com for current product details. ©2019 Kenall Mfg. Co.

MLHA5-021419



Job Name:
LAKEWOOD ELEMENTARY SCHOOL CANOPY
PROJECT
Institution: Horry County Schools (Conway)

Catalog Number:
MLHA5-48-R-CC(DARK BRONZE)-
PP-45L40K-DCC-DV
Notes:

Type:
CANOPY
TSC20-43231

For additional photometry, go to www.kenall.com

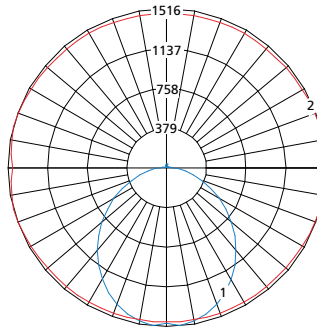
MILLENIUM STRETCH™
MLHA5 SERIES – INDIVIDUAL

PERFORMANCE

Length	Lamp Type	Initial Delivered Lumens		Input Power (W)	Drive Current (mA)	Estd. L70 LED Life (Hrs)
		@ 25°C	Efficacy (lm/W)			
2'	25L35K	2,374	95	25	100	150,000
	25L40K	2,531	101	25	100	150,000
	25L50K	2,531	101	25	100	150,000
4'	45L35K	4,748	97	49	100	150,000
	45L40K	5,062	103	49	100	150,000
	45L50K	5,062	103	49	100	150,000

Information above is valid for the recommended Type PP lens type and is subject to change without notice. Visit www.kenall.com for IES files and additional information.

Model: MLHA5-48-F-MW-PP-45L40K-DCC-DV

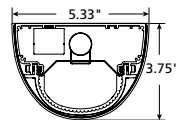


Maximum Candela = 1516 Located At Horizontal Angle = 15, Vertical Angle = 5

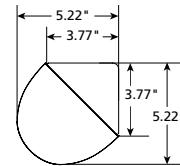
— 1 - Vertical Plane Through Horizontal Angles (15-195) (Through Max. Cd.)
— 2 - Horizontal Cone Through Vertical Angle (5) (Through Max. Cd.)

DIMENSIONAL DATA

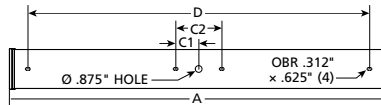
CROSS SECTION/DETAILS



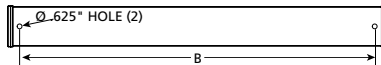
CORNER MOUNT BRACKET



SURFACE MOUNTING HOLES



PM OPTION



Nominal Two Foot Fixture Legend

LMP End Cap	A	B	C1	C2	D
T8/LED R	26.524	22.250	N/A	N/A	20.480
T8/LED F	25.308	22.250	N/A	N/A	20.480
T8/LED SP	28.131	22.250	N/A	N/A	20.480
T8/LED RV	27.674	22.250	N/A	N/A	20.480
T5 R	24.940	20.666	N/A	N/A	18.896
T5 F	23.724	20.666	N/A	N/A	18.896
T5 SP	26.547	20.666	N/A	N/A	18.896
T5 RV	26.090	20.666	N/A	N/A	18.896

Nominal Three Foot Fixture Legend

LMP End Cap	A	B	C1	C2	D
T8/LED R	38.524	34.250	3.000	6.000	32.480
T8/LED F	37.308	34.250	3.000	6.000	32.480
T8/LED SP	40.131	34.250	3.000	6.000	32.480
T8/LED RV	39.674	34.250	3.000	6.000	32.480
T5 R	36.751	32.478	2.953	5.906	30.708
T5 F	35.535	32.478	2.953	5.906	30.708
T5 SP	38.358	32.478	2.953	5.906	30.708
T5 RV	37.901	32.478	2.953	5.906	30.708

Nominal Four Foot Fixture Legend

LMP End Cap	A	B	C1	C2	D
T8/LED R	50.524	46.250	3.000	6.000	44.480
T8/LED F	49.308	46.250	3.000	6.000	44.480
T8/LED SP	52.131	46.250	3.000	6.000	44.480
T8/LED RV	51.674	46.250	3.000	6.000	44.480
T5 R	48.562	44.288	2.953	5.906	42.518
T5 F	47.346	44.288	2.953	5.906	42.518
T5 SP	50.169	44.288	2.953	5.906	42.518
T5 RV	49.712	44.288	2.953	5.906	42.518



www.kenall.com | P: 800-4-Kenall | F: 262-891-9701 | 10200 55th Street Kenosha, Wisconsin 53144, USA

A brand of **Legrand**

This product complies with the Buy American Act, manufactured in the United States with more than 50% of the component cost of US origin. It may be covered by patents found at www.kenall.com/patents. Content of specification sheets is subject to change; please consult www.kenall.com for current product details. ©2019 Kenall Mfg. Co.

MLHA5-021419