



DEMOLITION LEGEND

- DEMOLISH AND REMOVE BUILDING
- CRUSH AND SHAPE EXISTING HMA SURFACE FOR USE AS AGGREGATE BASE COURSE PER SECTION 305 OF THE 2012 MDOT STANDARD SPECIFICATIONS FOR CONSTRUCTION.
- REMOVAL LIMITS, INCLUDES PAVED SURFACES, BLEACHERS, SIGNS, SHELTERS, FOUNDATIONS, AND OTHER MISC FACILITIES/INFRASTRUCTURE
- REMOVE CONCRETE PAVEMENT
- REMOVE TREE INCLUDING STUMP
- REMOVE CHAIN LINK FENCE
- REMOVE STORM SEWER
- REMOVE SANITARY SEWER
- CONSTRUCTION LIMIT
- WORK ASSOCIATED WITH ALTERNATE BID

DEMOLITION NOTES:

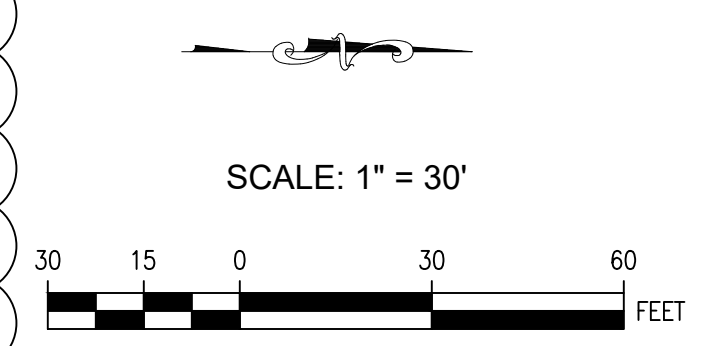
1. THE LOCATION OF THE EXISTING UNDERGROUND ELECTRICAL SYSTEM IS NOT KNOWN AND WILL NEED TO BE COORDINATED IN THE FIELD WITH THE ELECTRICAL CONTRACTOR AND THE OWNER'S REPRESENTATIVE. SEE SHEET EC-101 FOR ADDITIONAL INFORMATION.
2. THE LOCATION OF THE EXISTING UNDERGROUND WATER AND IRRIGATION SYSTEM IS NOT KNOWN AND WILL NEED TO BE COORDINATED IN THE FIELD WITH THE OWNER'S REPRESENTATIVE TO DETERMINE THE LOCATIONS OF WHERE SEGMENTS OF THIS INFRASTRUCTURE WILL NEED TO BE CAPPED AND/OR A WATER VALVE BE INSTALLED, AS PART OF NOT DOING THE ALTERNATE ASSOCIATED WITH THE MULTI-USE FIELD.
3. CONTRACTOR SHALL STRIP TOPSOIL WITHIN THE CONSTRUCTION LIMITS AND STOCKPILE. TOPSOIL WILL BE RE-USED IN SITE RESTORATION AND CONSTRUCTION OF BERMS. ALL AREAS DISTURBED OUTSIDE THE CONSTRUCTION LIMITS SHALL BE RESTORED TO A CONDITION EQUAL TO OR BETTER THAN EXISTED, PRIOR TO CONSTRUCTION, AT NO ADDITIONAL COST. SEE GEOTECHNICAL REPORT FOR ADDITIONAL INFORMATION.
4. CONTRACTOR SHALL REMOVE EXISTING LIGHT, SEE SHEET EC-101 FOR FIELD LIGHTING DEMOLITION REQUIREMENTS.
5. REMOVE EXISTING TREES AND BRUSH WITHIN CONSTRUCTION LIMITS. TREE REMOVAL SHALL INCLUDE STUMPS.
6. KNOWN UTILITIES SHOWN ARE APPROXIMATE. CONTRACTOR SHALL FIELD VERIFY ALL UTILITY LOCATIONS IN THE FIELD PRIOR TO CONSTRUCTION.
7. CONTRACTOR SHALL BE RESPONSIBLE FOR ANY DEWATERING NECESSARY TO COMPLETE THE WORK NOTED ON THESE PLANS. WATER REMOVED BY DEWATERING EQUIPMENT SHALL NOT BE DISPOSED OF INTO EXISTING SANITARY SEWERS.
8. IT SHALL BE THE RESPONSIBILITY OF THE CONTRACTOR TO OBTAIN ALL NECESSARY PERMITS REQUIRED FOR CONSTRUCTION, INCLUDING, BUT NOT LIMITED TO, WATER MAIN, SANITARY SEWER, NPDES, SESC & ELECTRICAL.
9. EXISTING STORM SEWER SHALL BE MAINTAINED UNTIL THE PROPOSED STORM SEWER IS INSTALLED, UNLESS OTHERWISE APPROVED BY THE ENGINEER.
10. ABANDON EXISTING WELL IN ACCORDANCE WITH PART 127, ACT 368 PA 197, MICHIGAN WATER WELL CONSTRUCTION AND PUMP INSTALLATION CODE, RULES R325.1601 THROUGH R325.1675. REMOVE PUMP MOTOR AND FOUNDATION AND ELECTRIC CONTROL PANELS.
11. EXISTING DUGOUT PROTECTIVE FENCE SHALL BE AUGMENTED WITH ADDITIONAL PANEL AND REINSTALLED WITH CONSTRUCTION OF NEW DUGOUTS. CONTRACTOR SHALL BE RESPONSIBLE FOR ANY DAMAGES THAT IMPACT THE REUSE OF MATERIALS.
12. CONTRACTOR SHALL STRIP TOPSOIL WITHIN THE CONSTRUCTION LIMITS AND STOCKPILE. TOPSOIL WILL BE RE-USED IN SITE RESTORATION AND CONSTRUCTION OF BERMS. ALL AREAS DISTURBED OUTSIDE THE CONSTRUCTION LIMITS SHALL BE RESTORED TO A CONDITION EQUAL TO OR BETTER THAN EXISTED, PRIOR TO CONSTRUCTION, AT NO ADDITIONAL COST. SEE GEOTECHNICAL REPORT FOR ADDITIONAL INFORMATION.

SITE PROTECTION KEY

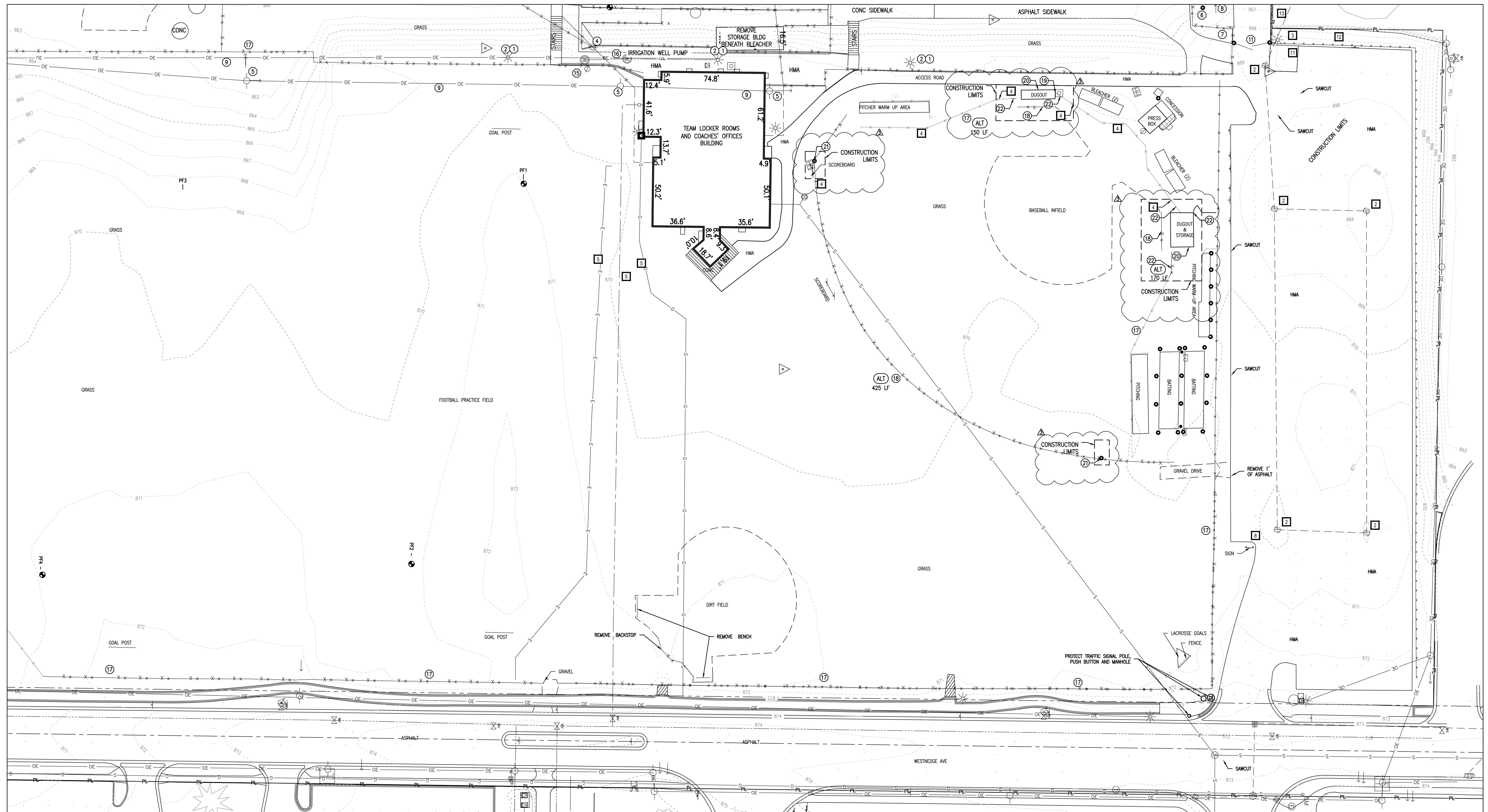
- 11 PROTECT TREE
- 2 PROTECT DRAINAGE STRUCTURE
- 3 PROTECT LIGHT POLE
- 4 PROTECT FENCE
- 5 PROTECT UNDERGROUND UTILITY
- 6 PROTECT ELECTRICAL TRANSFORMER
- 7 PROTECT UTILITY POLE
- 8 PROTECT SIGN
- 9 PROTECT VALVE
- 10 PROTECT LANDSPACE/HARDSCAPE
- 11 PROTECT CONCRETE PAVEMENT
- 12 PROTECT GUARD RAIL
- 13 PROTECT RETAINING WALL

SITE REMOVAL KEY

- 1 SALVAGE LIGHT FIXTURE TO OWNER
- 2 REMOVE LIGHT POLE AND FOUNDATION, IF APPLICABLE
- 3 REMOVE FLAG POLES
- 4 REMOVE STORM SEWER/DRAINAGE STRUCTURE
- 5 REMOVE UTILITY POLE/GUY WIRE
- 6 REMOVE POST
- 7 REMOVE SIGN
- 8 REMOVE ELECTRICAL SERVICE LINE
- 9 REMOVE OVERHEAD ELECTRIC LINE
- 10 REMOVE ROCK RIPRAP
- 11 REMOVE GATE AND FOUNDATION, IF APPLICABLE
- 12 SALVAGE SCORE BOARD TO OWNER AND REMOVE FOUNDATIONS
- 13 SALVAGE BLEACHER TO OWNER
- 14 SALVAGE FOOTBALL GOAL POST
- 15 REMOVE IRRIGATION WELL PUMP, SEE NOTE 10
- 16 REMOVE WATER VALVE
- 17 REMOVE FENCE
- 18 REMOVE AND RELOCATE PROTECTIVE DUGOUT FENCE; SEE NOTE 11, SHEET C-107 FOR NEW LOCATION AND C-507 FOR PROTECTIVE DUGOUT FENCE DETAILS.
- 19 REMOVE AND TEMPORARILY RELOCATE EX. ELECTRICAL PANEL AND DISCONNECT SWITCH, DISCONNECT EX. CIRCUITS AND RECONFIGURE CONDUITS AS REQUIRED FOR NEW DUGOUT CONSTRUCTION.
- 20 REMOVE EX. DUGOUT STRUCTURE, CONCRETE SLAB AND FOUNDATIONS, COMPLETE.
- 21 REMOVE AND RELOCATE FOUL POLE; SEE SITE IMPROVEMENTS SHEET FOR NEW LOCATION
- 22 REMOVE AND RECONFIGURE FENCE AS REQUIRED FOR NEW DUGOUT CONSTRUCTION.



MATCH LINE - SEE SHEET C-100



DESIGNED BY: SEC
 CHECKED BY: HMA
 PLOTTED BY: MICHAEL J. HARRIS
 APPROVED BY: DAVIS MCKEY
 PROJECT: PORTAGE PUBLIC SCHOOLS CENTRAL ATHLETIC FACILITIES DEMOLITION - NORTH EAST SITE
 DATE: 04/01/19



PORTAGE PUBLIC SCHOOLS
 CENTRAL ATHLETIC FACILITIES
 8135 SOUTH WESTNEDGE AVENUE, PORTAGE, MI 49802

SITE DEMOLITION - NORTH
 EAST SITE

NO.	DATE	DESCRIPTION
1	04/01/19	ISSUED FOR PERMITTING
2	04/01/19	ISSUED FOR PERMITTING
3	04/01/19	ISSUED FOR PERMITTING
4	04/01/19	ISSUED FOR PERMITTING
5	04/01/19	ISSUED FOR PERMITTING
6	04/01/19	ISSUED FOR PERMITTING
7	04/01/19	ISSUED FOR PERMITTING
8	04/01/19	ISSUED FOR PERMITTING
9	04/01/19	ISSUED FOR PERMITTING
10	04/01/19	ISSUED FOR PERMITTING
11	04/01/19	ISSUED FOR PERMITTING
12	04/01/19	ISSUED FOR PERMITTING
13	04/01/19	ISSUED FOR PERMITTING
14	04/01/19	ISSUED FOR PERMITTING
15	04/01/19	ISSUED FOR PERMITTING
16	04/01/19	ISSUED FOR PERMITTING
17	04/01/19	ISSUED FOR PERMITTING
18	04/01/19	ISSUED FOR PERMITTING
19	04/01/19	ISSUED FOR PERMITTING
20	04/01/19	ISSUED FOR PERMITTING
21	04/01/19	ISSUED FOR PERMITTING
22	04/01/19	ISSUED FOR PERMITTING

SCALE: AS SHOWN
 PROJ. #: 180019
 DATE: 04/01/19
 SHEET
C-103



SITE IMPROVEMENT LEGEND

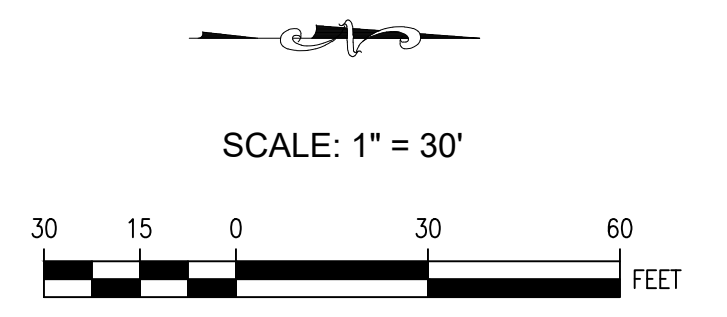
- MOOT TYPE F4 CONCRETE CURB AND GUTTER SEE SHT C-502
- MOOT TYPE F4 WASHOUT CONCRETE CURB AND GUTTER SEE SHT C-502
- CONCRETE SIDEWALK. SIDEWALK SHALL BE 5" THICK UNLESS OTHERWISE NOTED.
- CONSTRUCTION LIMITS
- TICKET BOOTH SEE ARCHITECTURAL DRAWINGS
- SOIL BORING SEE GEOTECHNICAL REPORT FOR ADDITIONAL INFORMATION
- WORK ASSOCIATED WITH ALTERNATE BID
- SIDEWALK RAMP & LANDING

SITE IMPROVEMENT NOTES

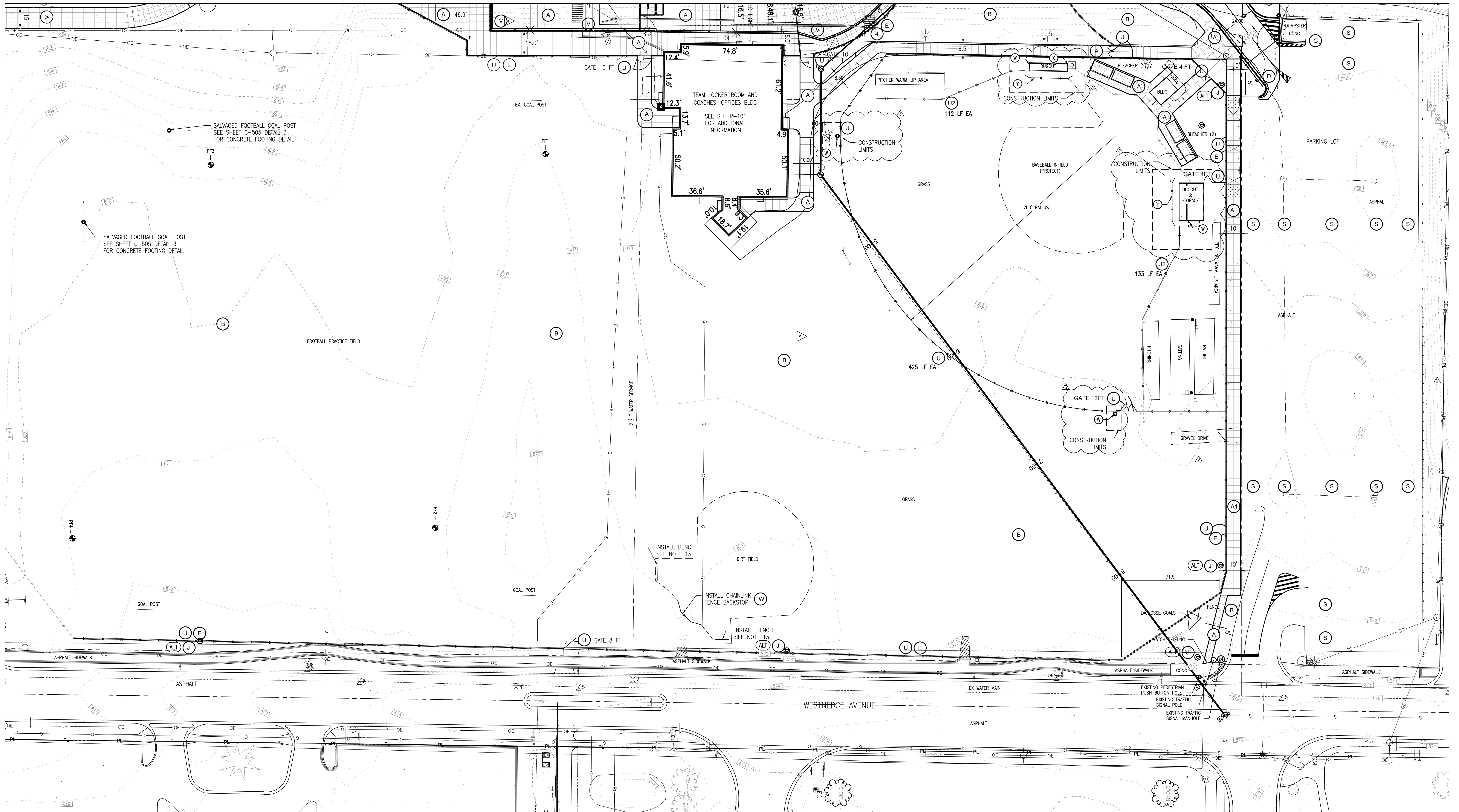
- ALL AREAS SHALL BE HYDROMULCH SEED, UNLESS OTHERWISE NOTED. REFER TO SHEET L-101.
- ALL AREAS DISTURBED BY CONSTRUCTION ACTIVITIES SHALL BE RESTORED TO A CONDITION EQUAL TO, OR BETTER THAN EXISTED PRIOR TO CONSTRUCTION.
- THE SITE CONTRACTOR SHALL COORDINATE THEIR WORK WITH ALL ADJACENT CONSTRUCTION BY OTHERS.
- REFER TO SHEET S-407 thru S-417 FOR STRUCTURAL REQUIREMENTS ASSOCIATED WITH THE BLEACHERS.
- CONTRACTOR SHALL FURNISH AND INSTALL ELECTRONIC SCOREBOARDS AT LOCATION SHOWN (FIELD STAKE LOCATION PRIOR TO INSTALLATION), MODEL SC-8114-2 FAIR-PLAY AS MANUFACTURED BY TRANS-LUX CORPORATION, OR APPROVED EQUAL. SEE SHEET C-504, DETAIL 2 FOR ADDITIONAL REQUIREMENTS.
- SEE SHEETS C-112 FOR UTILITY DRAINAGE INFORMATION.
- REFER TO DETAIL 2 ON SHEET C-505 FOR TYPICAL CHAIN LINK SWING GATE, AND DETAIL 1, SHEET C-505 FOR PARKING LOT SWING GATE REQUIREMENTS.
- CONTRACTOR TO FIELD STAKE FENCE AND GATE FOR OWNER'S REVIEW PRIOR TO INSTALLATION. OWNER RESERVES THE RIGHT TO FIELD ADJUST LOCATION.
- REFER TO SHEETS EC-001, EC-101 AND EC-102 FOR FIELD LIGHTING.
- REFER TO SHEETS L-200 AND L-201 FOR IRRIGATION REQUIREMENTS.
- CHAIN LINK FENCE WITH WIND SCREEN SHALL BE AER-FLO TUFTY OR APPROVED EQUAL.
- ELECTRICAL UTILITY SHALL BE RECONFIGURED AND INSTALLED ON NEW DUGOUT. COORDINATE WITH ELECTRICAL PLANS.
- PROTECTIVE DUGOUT FENCE TO BE INSTALLED UTILIZING EXISTING FENCE MATERIALS WITH ADDITION OF NEW 4" PANEL TO STRAIGHT-AWAY PORTION ON THE OUTFIELD END OF THE DUGOUT.
- FOUL POLES TO BE RELOCATED TO INTERSECTION OF FOUL LINE EXTENSION AND OUTFIELD FENCE. DO NOT DISTURB EXISTING FENCE AND MAINTENANCE STRIP DURING INSTALLATION.

SITE IMPROVEMENT KEY

- A - 5" CONCRETE SIDEWALK
- A1 - THICKENED EDGE CONCRETE SIDEWALK
- A2 - 6" CONCRETE SIDEWALK
- B - LAWN/LANDSCAPE AREA, SEE SHEET L-100.
- C - TRENCH DRAIN
- D - CONCRETE CURB AND GUTTER
- D1 - CONCRETE CURB AND GUTTER - WASH-OUT
- E - 12" CONCRETE MAINTENANCE STRIP
- F - RUNNING TRACK SURFACE
- G - DUMPSTER ENCLOSURE
- H - SCOREBOARD
- I - CONCRETE MONUMENT
- J - STORM DRAIN STRUCTURE SEE NOTE 7 THIS SHEET
- J1 - LEACH BASIN
- K - SANITARY MANHOLE SEE NOTE 7 THIS SHEET
- L - HIGH JUMP- RUNNING TRACK SURFACE
- M - LONG JUMP
- N - SYNTHETIC FIELD SURFACE, REFER TO SPEC SECTIONS 312200, 312201, 312100. SEE NOTE 5 THIS SHEET
- O - HOME BLEACHERS, SEE SHEETS C-406 TO C-414 SEE NOTE 4 THIS SHEET
- P - VISITOR BLEACHERS, SEE SHEETS C-415 TO C-417 SEE NOTE 4 THIS SHEET
- Q - FLAGPOLE
- R - LIGHT DUTY HMA PAVEMENT
- S - HEAVY DUTY HMA PAVEMENT
- T - BRICK PAVERS
- U - 6" GALVANIZED CHAIN LINK FENCE/GATE WITH WIND SCREEN SEE NOTE 12 THIS SHEET
- U1 - 6" GALVANIZED CHAIN LINK FENCE/GATE WITH WIND SCREEN SEE NOTE 12 THIS SHEET
- U2 - 4" BLACK VINYL CHAIN LINK FENCE/GATE SEE NOTE 8 THIS SHEET
- U3 - 6" ORNAMENTAL FENCE/GATE, REFER TO SPEC SECTION 323119 AND NOTE 8 THIS SHEET.
- UA - PARKING LOT SWING GATE
- V - RETAINING WALL WITH RAILING
- W - DUGOUTS, SEE SHEET A-101 AND SHEET C-507
- X - ELECTRICAL UTILITY, SEE NOTE 12 THIS SHEET.
- Y - PROTECTIVE DUGOUT FENCE, SEE SHEET C-507 AND NOTE 13 THIS SHEET
- Z - FOUL POLE, SEE NOTE 14 THIS SHEET.



MATCH LINE - SEE SHT 104



DESIGNED BY: EC
 CHECKED BY: NGA
 DRAWN BY: NGA
 PLOTTED BY: MARCOLE JAMES
 DATE: 04/10/19



**PORTAGE PUBLIC SCHOOLS
 CENTRAL ATHLETIC EVENT FACILITIES**
 8135 SOUTH WESTEDGE AVENUE, PORTAGE, MI 49002

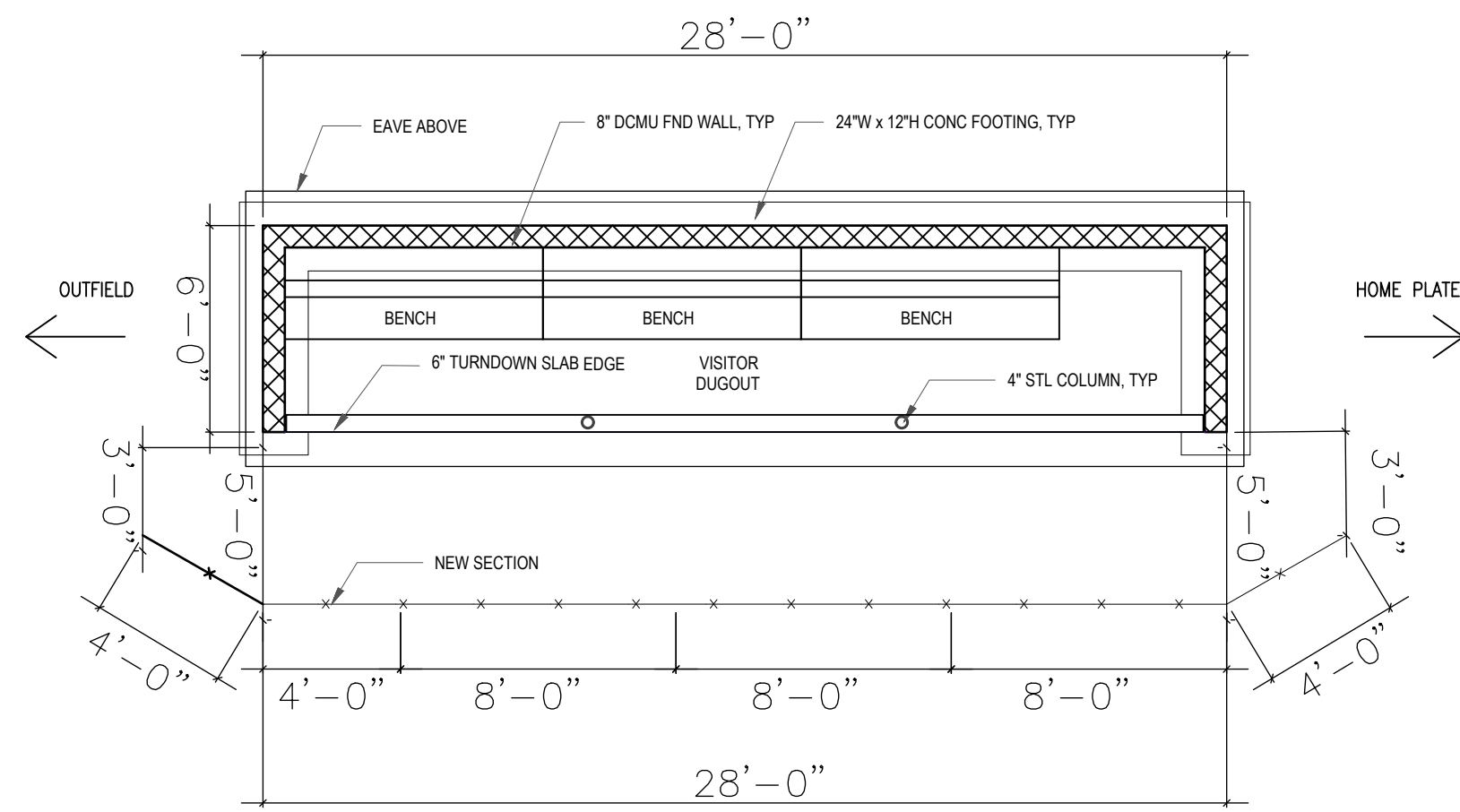
**SITE IMPROVEMENTS
 NORTH EAST SITE -
 GEOMETRICS**

REVISIONS	
1	ADD CD 184 3/13/2019
2	ADD CD 179 04/17/2019
3	ADD CD 180 07/30/2021

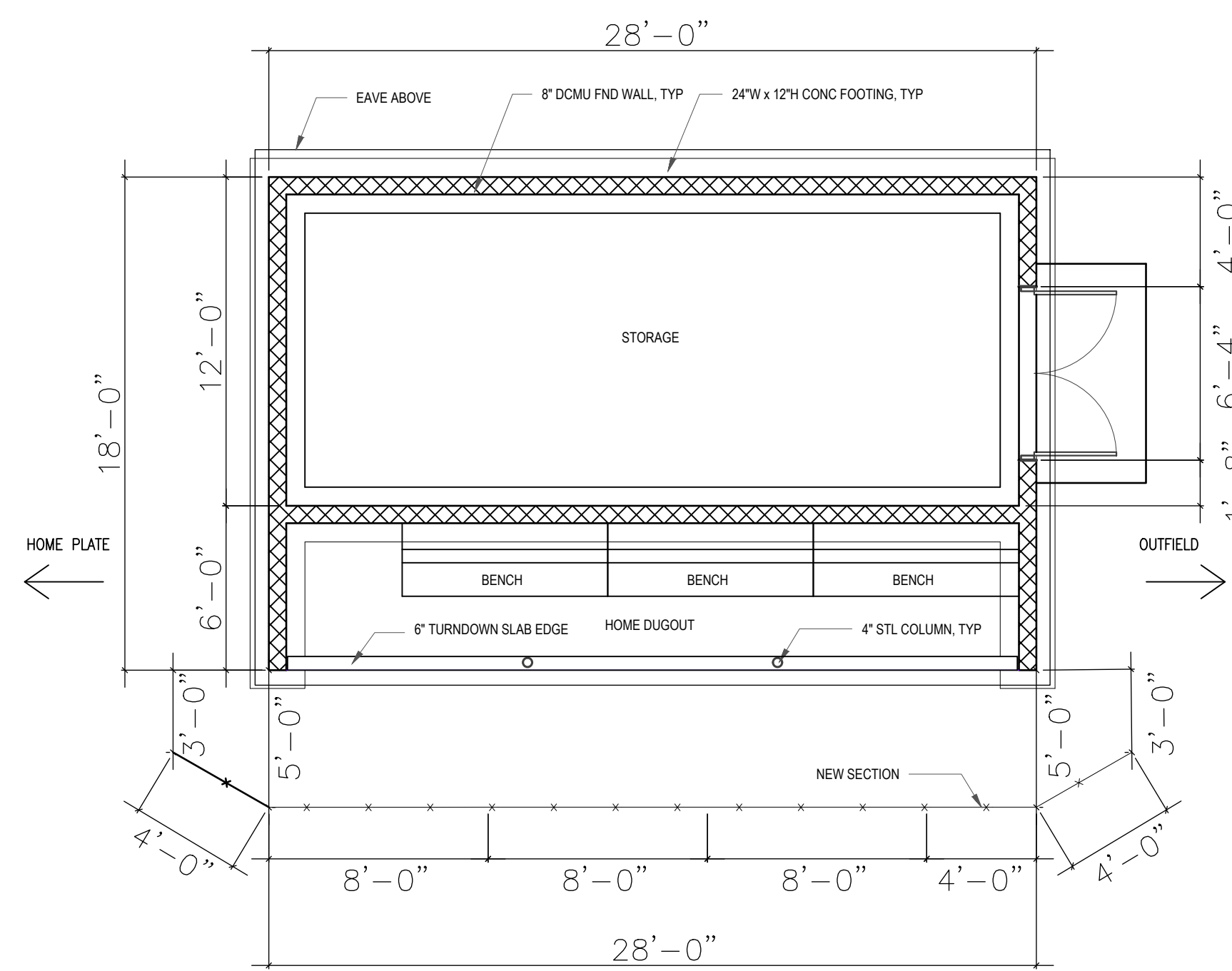
SCALE: AS SHOWN
 PROJ. #: 160019
 DATE: 04/10/19
 SHEET
C-107



WE RECYCLE



VISITOR DUGOUT PROTECTIVE FENCE DETAIL 1
NO SCALE C-507



HOME DUGOUT PROTECTIVE FENCE DETAIL 2
NO SCALE C-507

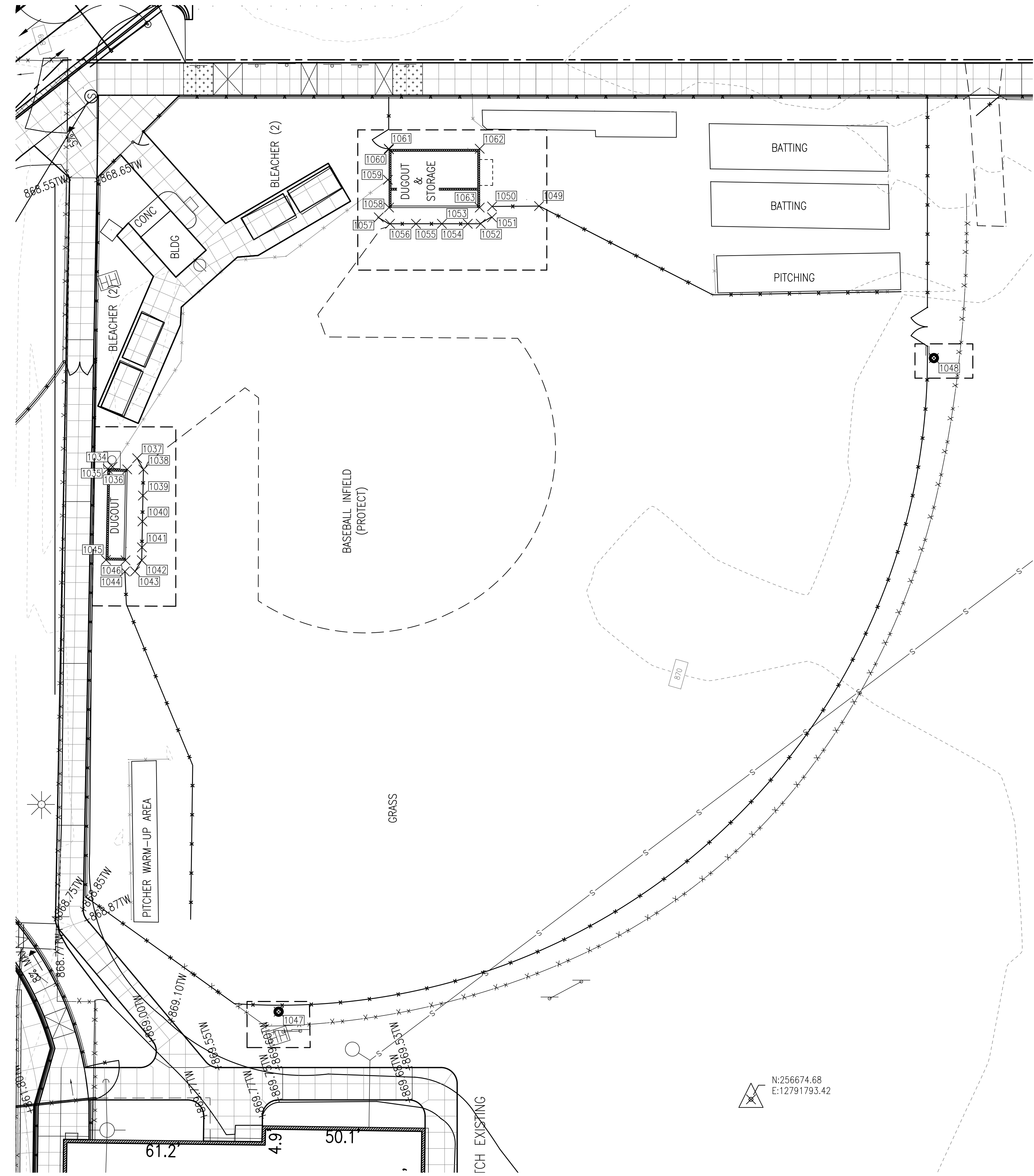
PROTECTIVE FENCE NOTE:
EXISTING FENCING MATERIALS ARE TO BE RE-INSTALLED AT NEW LOCATION WITH AN ADDITIONAL 4' PANEL TO BE ADDED TO THE STRAIGHT-AWAY SECTION OF THE FENCING AT THE OUTFIELD END OF THE DUGOUT. NEW SECTION MATERIALS SHALL MATCH EXISTING FENCING.

SOFTBALL DUGOUT RENOVATION POINTS			
POINT	NORTHING	EASTING	DESCRIPTION
1034	256870.07	12791596.29	FP
1035	256869.37	12791594.80	DW
1036	256869.25	12791600.82	DW
1037	256872.68	12791603.89	FP
1038	256869.20	12791605.82	FP
1039	256861.16	12791605.67	FP
1040	256853.18	12791605.52	FP
1041	256845.17	12791605.37	FP
1042	256841.18	12791605.29	FP
1043	256837.76	12791603.23	FP

SOFTBALL DUGOUT RENOVATION POINTS			
POINT	NORTHING	EASTING	DESCRIPTION
1044	256837.71	12791600.11	FP
1045	256841.28	12791594.27	DW
1046	256841.15	12791600.29	DW
1047	256701.75	12791647.56	FLP
1048	256903.63	12791849.90	FLP
1049	256950.58	12791727.97	FP
1050	256950.46	12791713.48	FP
1051	256947.12	12791713.46	FP
1052	256945.12	12791709.97	FP
1053	256945.12	12791705.97	FP

SOFTBALL DUGOUT RENOVATION POINTS			
POINT	NORTHING	EASTING	DESCRIPTION
1054	256945.11	12791697.97	FP
1055	256945.11	12791689.97	FP
1056	256945.11	12791681.97	FP
1057	256947.11	12791678.49	FP
1058	256950.11	12791681.66	DW
1059	256958.70	12791681.29	FP
1060	256958.11	12791681.66	DW
1061	256968.28	12791681.56	FP
1062	256968.29	12791709.65	DW
1063	256950.12	12791709.66	DW

DESCRIPTION LEGEND
DW = DUGOUT OUTER WALL
FP = FENCE POST
FLP = FOUL LINE POLE



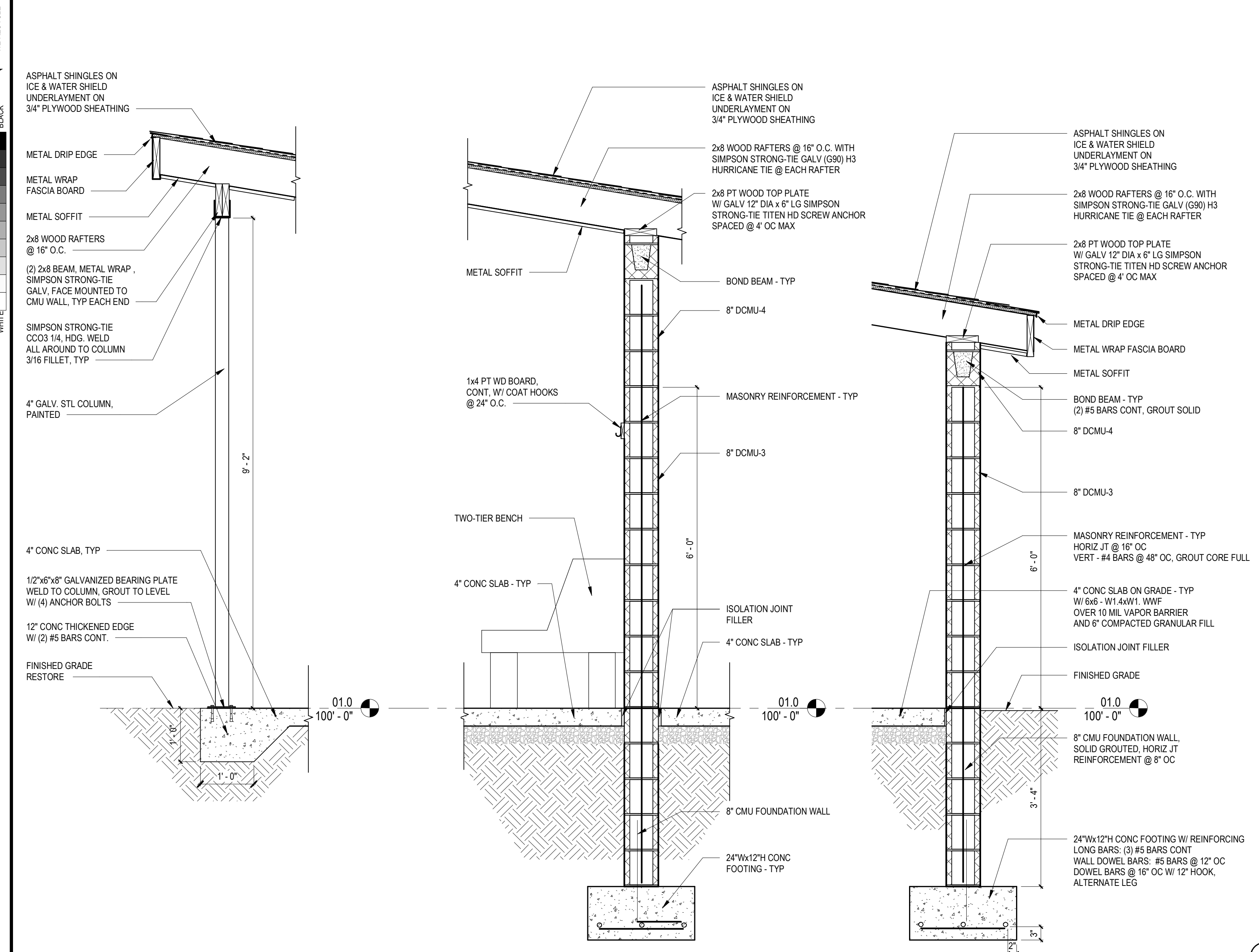
SOFTBALL DUGOUT AND PROTECTIVE FENCE LAYOUT
SCALE: 1"=20'



DESIGNED BY EEC
CHECKED BY MKA
APPROVED BY
DWTS MOD BY
PLOTTED BY: MICHELLE JAMES (12/02/19 4:30 PM)
C:\PROJECTS\160019\160019.dwg, STANDARD DETAILS.DWG, C-507 STANDARD DETAILS

DESIGNED BY EEC
CHECKED BY MKA
APPROVED BY
DWTS MOD BY

REVISIONS
1. SOFTBALL DUGOUTS 7/26/2021



FOUNDATION AND FRAMING NOTE:

- FIELD LOCATE CONTROL JOINTS AT SPACING NOT TO EXCEED 30 TIMES THE SLAB THICKNESS. ALIGN WITH WALLS AND COLUMNS.
- TOP OF FOOTING ELEVATION TO BE MINIMUM 3'-6" BELOW GRADE. TOP OF PIER ELEVATION TO BE 1'-0" BELOW SLAB.
- ALL FOOTINGS TO BE ON UNDISTURBED SOIL OR PROPERLY COMPACTED FILL AS REQUIRED.
- ALL STRUCTURAL WOOD TO BE SOUTHERN YELLOW PINE NO. 2 WITH A MINIMUM F_b = 1500 PSI. MAXIMUM MOISTURE CONTENT OF 19%.
- ALL WOOD IN CONTACT WITH CONCRETE, STEEL, OR EXPOSED TO WEATHER TO BE PRESSURE TREATED.

STRUCTURAL DESIGN INFORMATION:

DESIGN DATA BASED ON ASCE 7-16 RISK CATEGORY II

CONSTRUCTION LIVE LOAD: 25 PSF
ROOF DEAD LOAD: 5 PSF
RAFTER FRAMING: 5 PSF
ROOFING MATERIAL: 5 PSF
MISCELLANEOUS: 5 PSF

SNOW LOAD:
SNOW EXPOSURE FACTOR (C_e): 0.9
THERMAL FACTOR (C_t): 1.2
SNOW IMPORTANCE FACTOR (I_s): 1.0
GROUND SNOW LOAD (P_g): 30 PSF
FLAT ROOF SNOW LOAD (P_f): 23 PSF
SLOPED ROOF FACTOR (C_s): 1.0

WIND LOAD:
BASIC WIND SPEED: 107 MPH
WIND IMPORTANCE FACTOR (I_w): 1.0
EXPOSURE CATEGORY: B

SEISMIC LOADS:
SEISMIC IMPORTANCE FACTOR (I_s): 1.0
SITE CLASS: D
SPECTRAL RESPONSE COEFFICIENTS:
S_s = 0.118 S₁ = 0.084 S₂ = 0.126 S₃ = 0.067
SEISMIC DESIGN CATEGORY: B

